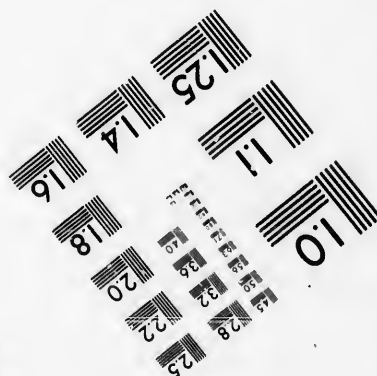
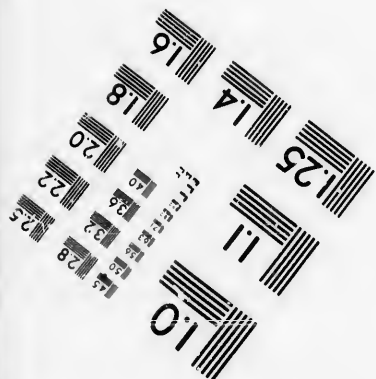
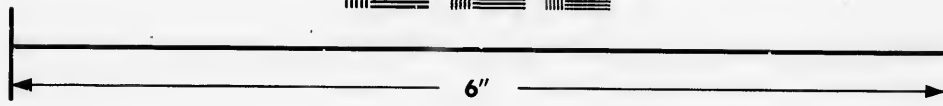
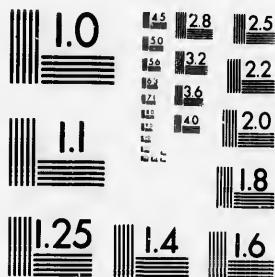


**IMAGE EVALUATION
TEST TARGET (MT-3)**



**Photographic
Sciences
Corporation**

23 WEST MAIN STREET
WEBSTER, N.Y. 14580
(716) 872-4503

**CIHM/ICMH
Microfiche
Series.**

**CIHM/ICMH
Collection de
microfiches.**



Canadian Institute for Historical Microreproductions / Institut canadien de microreproductions historiques

© 1986

Technical and Bibliographic Notes/Notes techniques et bibliographiques

The Institute has attempted to obtain the best original copy available for filming. Features of this copy which may be bibliographically unique, which may alter any of the images in the reproduction, or which may significantly change the usual method of filming, are checked below.

L'Institut a microfilmé le meilleur exemplaire qu'il lui a été possible de se procurer. Les détails de cet exemplaire qui sont peut-être uniques du point de vue bibliographique, qui peuvent modifier une image reproduite, ou qui peuvent exiger une modification dans la méthode normale de filmage sont indiqués ci-dessous.

- | | |
|--|--|
| <input type="checkbox"/> Coloured covers/
Couverture de couleur | <input checked="" type="checkbox"/> Coloured pages/
Pages de couleur |
| <input type="checkbox"/> Covers damaged/
Couverture endommagée | <input checked="" type="checkbox"/> Pages damaged/
Pages endommagées |
| <input type="checkbox"/> Covers restored and/or laminated/
Couverture restaurée et/ou pelliculée | <input type="checkbox"/> Pages restored and/or laminated/
Pages restaurées et/ou pelliculées |
| <input type="checkbox"/> Cover title missing/
Le titre de couverture manque | <input checked="" type="checkbox"/> Pages discoloured, stained or foxed/
Pages décolorées, tachetées ou piquées |
| <input type="checkbox"/> Coloured maps/
Cartes géographiques en couleur | <input type="checkbox"/> Pages detached/
Pages détachées |
| <input type="checkbox"/> Coloured ink (i.e. other than blue or black)/
Encre de couleur (i.e. autre que bleue ou noire) | <input checked="" type="checkbox"/> Showthrough/
Transparence |
| <input type="checkbox"/> Coloured plates and/or illustrations/
Planches et/ou illustrations en couleur | <input type="checkbox"/> Quality of print varies/
Qualité inégale de l'impression |
| <input type="checkbox"/> Bound with other material/
Relié avec d'autres documents | <input type="checkbox"/> Includes supplementary material/
Comprend du matériel supplémentaire |
| <input type="checkbox"/> Tight binding may cause shadows or distortion
along interior margin/
La reliure serrée peut causer de l'ombre ou de la
distorsion le long de la marge intérieure | <input type="checkbox"/> Only edition available/
Seule édition disponible |
| <input type="checkbox"/> Blank leaves added during restoration may
appear within the text. Whenever possible, these
have been omitted from filming/
Il se peut que certaines pages blanches ajoutées
lors d'une restauration apparaissent dans le texte,
mais, lorsque cela était possible, ces pages n'ont
pas été filmées. | <input type="checkbox"/> Pages wholly or partially obscured by errata
slips, tissues, etc., have been refilmed to
ensure the best possible image/
Les pages totalement ou partiellement
obscurcies par un feuillet d'errata, une pelure,
etc., ont été filmées à nouveau de façon à
obtenir la meilleure image possible. |
| <input checked="" type="checkbox"/> Additional comments:/ [Printed ephemera] [2] p.
Commentaires supplémentaires: | |

This item is filmed at the reduction ratio checked below/
Ce document est filmé au taux de réduction indiqué ci-dessous.

10X	12X	14X	16X	18X	20X	22X	24X	26X	28X	30X	32X
						✓					

The copy filmed here has been reproduced thanks to the generosity of:

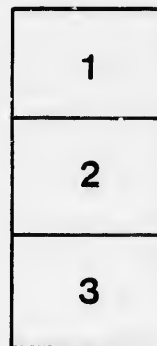
McLennan Library
McGill University
Montreal

The images appearing here are the best quality possible considering the condition and legibility of the original copy and in keeping with the filming contract specifications.

Original copies in printed paper covers are filmed beginning with the front cover and ending on the last page with a printed or illustrated impression, or the back cover when appropriate. All other original copies are filmed beginning on the first page with a printed or illustrated impression, and ending on the last page with a printed or illustrated impression.

The last recorded frame on each microfiche shall contain the symbol \rightarrow (meaning "CONTINUED"), or the symbol ∇ (meaning "END"), whichever applies.

Maps, plates, charts, etc., may be filmed at different reduction ratios. Those too large to be entirely included in one exposure are filmed beginning in the upper left hand corner, left to right and top to bottom, as many frames as required. The following diagrams illustrate the method:



L'exemplaire filmé fut reproduit grâce à la générosité de:

McLennan Library
McGill University
Montreal

Les images suivantes ont été reproduites avec le plus grand soin, compte tenu de la condition et de la netteté de l'exemplaire filmé, et en conformité avec les conditions du contrat de filmage.

Les exemplaires originaux dont la couverture en papier est imprimée sont filmés en commençant par le premier plat et en terminant soit par la dernière page qui comporte une empreinte d'impression ou d'illustration, soit par le second plat, selon le cas. Tous les autres exemplaires originaux sont filmés en commençant par la première page qui comporte une empreinte d'impression ou d'illustration et en terminant par la dernière page qui comporte une telle empreinte.

Un des symboles suivants apparaîtra sur la dernière image de chaque microfiche, selon le cas: le symbole \rightarrow signifie "A SUIVRE", le symbole ∇ signifie "FIN".

Les cartes, planches, tableaux, etc., peuvent être filmés à des taux de réduction différents. Lorsque le document est trop grand pour être reproduit en un seul cliché, il est filmé à partir de l'angle supérieur gauche, de gauche à droite, et de haut en bas, en prenant le nombre d'images nécessaire. Les diagrammes suivants illustrent la méthode.

CIRCULAR.

Sir,

The undersigned having, THIS DAY, opened Offices and Stores, for Business, as

Auctioneers and Commission Merchants,

NO. 83, ST. PAUL STREET,

QUEBEC,

beg leave to solicit the favor of your patronage.

Their Business will be conducted with punctuality and despatch.

ALL ORDERS ATTENDED TO PROMPTLY.

Orders for the Purchase or Sale of GOODS, PROVISIONS or LUMBER, in either Upper or Lower Canada, executed at the earliest moment possible,

AND AT A MODERATE CHARGE!

The undersigned feel confident that their extensive connections in Canada West will enable them to transact business for the INTEREST of those who may favor them with their orders.

ORDERS TAKEN FOR

BLACK WALNUT, CURLED MAPLE, AND OTHER VENEERS,

OF SUPERIOR QUALITY,

MANUFACTURED IN THE COUNTY OF KENT, CANADA WEST.

LIBERAL CASE ADVANCES WILL BE MADE ON CONSIGNMENTS, IF REQUIRED.

Parties, either in Upper or Lower Canada, will please leave or send in their orders EARLY.

Your obedient servants,

J. W. ROSE & CO.

No. 83, St. Paul Street,
Quebec, 5th October, 1863.

REFERENCES (by permission):

Hon. J. S. MACDONALD,
Messrs. LEMESURIER, GRANT & Co.,
Mr. WILLIS RUSSELL, (Russell's Hotel,) } Quebec.
Hon. MALCOLM CAMERON
Hon. L. H. HOLTON, Montreal.
J. W. COOK, Esq., Morrisburg, C.W.

Hon. JAMES SKEAD, M.L.C., Ottawa;
DANIEL McLACHLAN, Esq., Annaprior.
Hon. WILLIAM McMASTER, Toronto.
Hon. WALTER McCREA, Chatham.
WILLIAM NOTMAN, Esq., M.P.P., Dundas, C. W.
JOHN S. ROSS, Esq., M.P.P., Matilda, C. W.

N.B.—Mr. ROSE will also attend to any business connected with the CROWN LANDS OFFICES; such as looking up Titles—taking out Patents—obtaining Timber or Gold Mine limits, &c., for which he has every facility.

NOTICES OF THE PRESS.

(From the Quebec Chronicle, of the 6th October.)

"We have to direct the attention of our readers to the advertisement in other columns announcing the opening of a new auction mart, by Messrs. J. W. Rose & Co. Mr. Rose has had a long and extensive business experience, which is certain to obtain for him a high rank in commercial circles. His practical knowledge will also give him a decided advantage in transactions entrusted to his care."

(From the Quebec Mercury, of the 5th October.)

"We would direct the attention of our readers to the advertisement of Messrs. J. W. Rose & Co., in this day's issue. Mr. Rose's large experience as a merchant in Canada West, will enable him to serve to the greatest advantage the interests of his patrons, and his business-like habits, we doubt not, will ensure for the firm a share of patronage. We bespeak for this new firm the favorable attention of the trade."

(From the Quebec Gazette, of the 8th October.)

"It will be seen by our advertising columns to-day, that a new Auction Mart has been opened in Quebec, by Messrs. J. W. Rose & Co. Mr. Rose is from Upper Canada, and bears an excellent reputation as a business man and otherwise. We wish the firm every success."

43 St Paul St

Quebec ^{the} 27th June 1864

Dear Mr. McLaughlin

Sir

Will you have
the kindness to inform me - on
your early convenience - whether the
Government - have any lands -
in the gulf region on the Chaudières
at their disposal - subject on the
terms.

Respectfully
Yours
J. W. Moss

