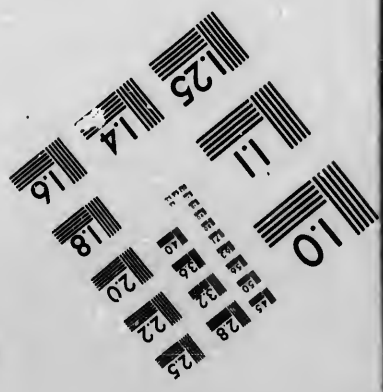
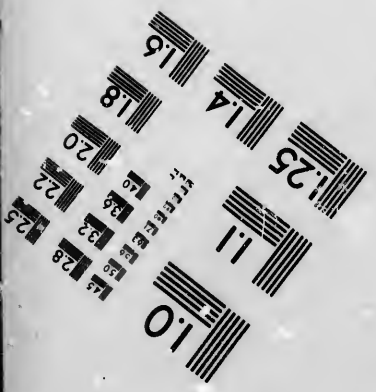
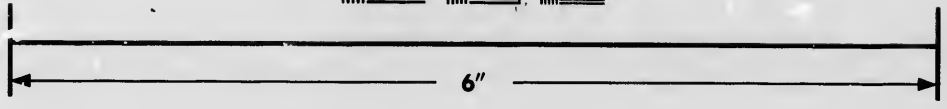
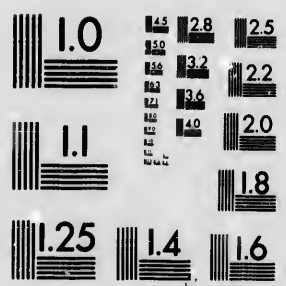


**IMAGE EVALUATION
TEST TARGET (MT-3)**



**Photographic
Sciences
Corporation**

23 WEST MAIN STREET
WEBSTER, N.Y. 14500
(716) 872-4503

**CIHM/ICMH
Microfiche
Series.**

**CIHM/ICMH
Collection de
microfiches.**



Canadian Institute for Historical Microreproductions / Institut canadien de microreproductions historiques

© 1986

Technical and Bibliographic Notes/Notes techniques et bibliographiques

The Institute has attempted to obtain the best original copy available for filming. Features of this copy which may be bibliographically unique, which may alter any of the images in the reproduction, or which may significantly change the usual method of filming, are checked below.

L'Institut a microfilmé le meilleur exemplaire qu'il lui a été possible de se procurer. Les détails de cet exemplaire qui sont peut-être uniques du point de vue bibliographique, qui peuvent modifier une image reproduite, ou qui peuvent exiger une modification dans la méthode normale de filmage sont indiqués ci-dessous.

- Coloured covers/
Couverture de couleur
- Covers damaged/
Couverture endommagée
- Covers restored and/or laminated/
Couverture restaurée et/ou pelliculée
- Cover title missing/
Le titre de couverture manque
- Coloured maps/
Cartes géographiques en couleur
- Coloured ink (i.e. other than blue or black)/
Encre de couleur (i.e. autre que bleue ou noire)
- Coloured plates and/or illustrations/
Planches et/ou illustrations en couleur
- Bound with other material/
Relié avec d'autres documents
- Tight binding may cause shadows or distortion along interior margin/
La reliure serrée peut causer de l'ombre ou de la distorsion le long de la marge intérieure
- Blank leaves added during restoration may appear within the text. Whenever possible, these have been omitted from filming/
Il se peut que certaines pages blanches ajoutées lors d'une restauration apparaissent dans le texte, mais, lorsque cela était possible, ces pages n'ont pas été filmées.
- Additional comments:/
Commentaires supplémentaires:

- Coloured pages/
Pages de couleur
- Pages damaged/
Pages endommagées
- Pages restored and/or laminated/
Pages restaurées et/ou pelliculées
- Pages discoloured, stained or foxed/
Pages décolorées, tachetées ou piquées
- Pages detached/
Pages détachées
- Showthrough/
Transparence
- Quality of print varies/
Qualité inégale de l'impression
- Includes supplementary material/
Comprend du matériel supplémentaire
- Only edition available/
Seule édition disponible
- Pages wholly or partially obscured by errata slips, tissues, etc., have been refilmed to ensure the best possible image/
Les pages totalement ou partiellement obscurcies par un feuillet d'errata, une pelure, etc., ont été filmées à nouveau de façon à obtenir la meilleure image possible.

[PRINTED EPHEMERA] 1 SHEET (VERSO BLANK)

This item is filmed at the reduction ratio checked below/
Ce document est filmé au taux de réduction indiqué ci-dessous.

10X	12X	14X	16X	18X	20X	22X	24X	26X	28X	30X	32X
								✓			

The copy filmed here has been reproduced thanks to the generosity of:

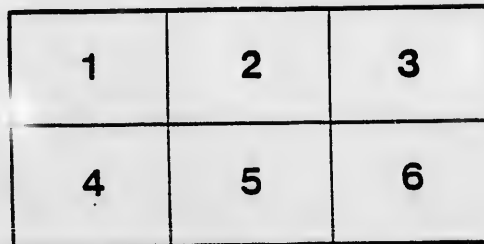
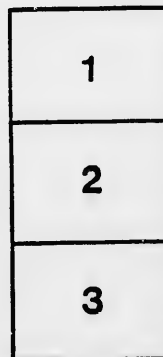
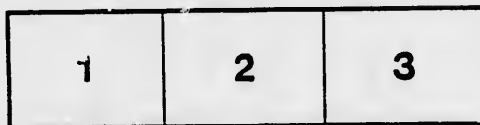
Archives of Ontario
Toronto

The images appearing here are the best quality possible considering the condition and legibility of the original copy and in keeping with the filming contract specifications.

Original copies in printed paper covers are filmed beginning with the front cover and ending on the last page with a printed or illustrated impression, or the back cover when appropriate. All other original copies are filmed beginning on the first page with a printed or illustrated impression, and ending on the last page with a printed or illustrated impression.

The last recorded frame on each microfiche shall contain the symbol \rightarrow (meaning "CONTINUED"), or the symbol ∇ (meaning "END"), whichever applies.

Maps, plates, charts, etc., may be filmed at different reduction ratios. Those too large to be entirely included in one exposure are filmed beginning in the upper left hand corner, left to right and top to bottom, as many frames as required. The following diagrams illustrate the method:



L'exemplaire filmé fut reproduit grâce à la générosité de:

Archives of Ontario
Toronto

Les images suivantes ont été reproduites avec le plus grand soin, compte tenu de la condition et de la netteté de l'exemplaire filmé, et en conformité avec les conditions du contrat de filmage.

Les exemplaires originaux dont la couverture en papier est imprimée sont filmés en commençant par le premier plat et en terminant soit par la dernière page qui comporte une empreinte d'impression ou d'illustration, soit par le second plat, selon le cas. Tous les autres exemplaires originaux sont filmés en commençant par la première page qui comporte une empreinte d'impression ou d'illustration et en terminant par la dernière page qui comporte une telle empreinte.

Un des symboles suivants apparaîtra sur la dernière image de chaque microfiche, selon le cas: le symbole \rightarrow signifie "A SUIVRE", le symbole ∇ signifie "FIN".

Les cartes, planches, tableaux, etc., peuvent être filmés à des taux de réduction différents. Lorsque le document est trop grand pour être reproduit en un seul cliché, il est filmé à partir de l'angle supérieur gauche, de gauche à droite, et de haut en bas, en prenant le nombre d'images nécessaire. Les diagrammes suivants illustrent la méthode.

ails
du
odifier
une
image

rrata
to

peiture,
n à



32X

LIST OF VOTERS-1889.

For the Township of BURFORD, in the Electoral District of SOUTH OXFORD.

LIST OF POST OFFICES, WITH THEIR REFERENCE NUMBERS.

8 Holbrook, 33 Brantford, 48 Windham, 55 Mt. Vernon, 57 Scotland, 63 Northfield, 72 Oakland.
30 Otterville, 46 Burford, 53 Cauning, 56 Ayr, 59 Fairfield, 66 Kelvin.

POLLING DISTRICT No. 32

Comprising Lots 1 to 12, inclusive, in the 12th, 13th and 14th Concessions thereof.

Explanation of abbreviations in "Title" column: O owner; T tenant; F S farmer's son; O S owner's son; I income; Oc occupant.

No.	Name in Full. (Surname first.)	Post Office.	Occupation.	Title.	Qualifying Property or Residence.	No.	Name in Full. (Surname first.)	Post Office.	Occupation.	Title.	Qualifying Property or Residence.
1	Adair, David G.	66	Farmer	O	Pts 11 12 Con. 14	75	Merritt, Isaac H.	57	Farmer	O	Pts 1 2 3 Con. 13
2	Arnold, Joseph	62	"	O	S 1/2 n 1/2 11	76	McIsaac, Malcolm	59	"	O	SW cor 3
3	Atkins, George T.	57	"	T	S 1/2 5	77	Messacar, Eugene	57	"	O	Pts 3 8
4	Brown, Robert	57	"	T	S pt 1	78	Malcolm, James	62	"	O	NE pt 9
5	Burch, John	57	Laborer	O	S pt 1	79	Mather, Allan	66	"	O	E 1/2 12
6	Bridge, Amos	66	Teacher	T	N 1/2 12	80	Midwinter, Charles	68	"	O	3 w 1/2 9
7	Beemer, Anson	57	"	T	E c pt 1	81	McCombs, Nathan	57	"	O	SW pt 5
8	Bowman, James H.	62	Farmer	O	W 1/2 9	82	Malcolm, Augustus	57	"	O	S pt 1
9	Bowman, Peter	62	Postmaster	O	NW pt 12	83	Moore, Joseph	57	Laborer	O	S c pt 1
10	Bowman, William	62	Farmer	FS	NW pt 12	84	Muirhead, Wm R.	57	Farmer	O	Pt 7
11	Bowman, Ephraim	66	Farmer	O	SW cor 12	85	Malcolm, Andrew	57	Saddler	O	E c pt 1
12	Burch, Stephen	66	Farmer	O	S 1/2 10	86	Malcolm, Edgar	57	Farmer	O	E c pt 1
13	Bowman, Franklin	66	"	O	Pt 12	87	Malcolm, John H.	57	"	O	E c pt 1
14	Bowman, Abraham	59	"	O	SE c 4	88	McCombs, Charles	57	"	O	NW cor 5
15	Bowman, William	57	"	O	NE c s 1/2 4	89	McIsaac, Robert	57	"	O	N c pt 5
16	Bowman, Hugh	57	"	O	N pt s 1/2 4	90	McIsaac, John	57	"	O	NE pt 6
17	Brown, William	57	Constable	O	C pt 1	91	Miller, Wm.	66	"	O	S 1/2 11
18	Bowman, Harvey	66	"	O	N 1/2 s 1/2 10	92	McCombs, Joseph	66	"	O	S 1/2 12
19	Bannister, Thomas	57	"	O	Pts 1 2	93	Mike, John	59	Laborer	T	Pt 6
20	Bowman, Walter	32	"	O	NW 1/2 9	94	Messacar, Charles	57	Agent	T	E c pt 1
21	Boyce, John	57	"	O	N 1/2 10	95	Merritt, Caleb L.	57	Farmer	T	Pt 3
22	Caldwell, Theodore H.	62	"	O	N 1/2 11	96	McCombs, James H.	57	"	Oc	Pt 12
23	Crabb, Henry	66	"	O	S 1/2 7	97	McCombs, James	57	"	FS	Pt 5
24	Crabb, William	66	"	T	S 1/2 7	98	Newstead, Philip	55	"	O	Pt 7
25	Clark, Charles H.	57	"	O	SW 1/2 8	99	Naroway, A. R.	55	"	O	Pt 12
26	Chambers, Joseph	66	"	O	SE 1/2 9	100	Newstead, Philip	53	"	O	SE 1/2 7
27	Caine, Jacob	48	"	O	Pt 6	101	Pettit, John G.	46	"	O	Pts 1 2
28	Clarke, George W.	66	Farmer	T	Pt 6	102	Phillips, George	46	"	O	NE cor 1
29	Chapman, Samuel C.	66	"	O	Pt 12	103	Pettit, Edward	62	Laborer	T	Pt 9
30	Crabb, George	66	"	O	S 1/2 7	104	Powell, Alfred	66	Farmer	T	Pt 12
31	Durham, Rodolphus	57	"	T	Pt 1	105	Pew, William	57	"	O	W pt 4
32	Eddy, Eli	57	"	O	Pts 5 6	106	Rock, Charles	72	"	O	Pt 7
33	Eddy, John	57	"	O	E c pt 1	107	Renwick, James	57	"	T	Pt 1
34	Eddy, Joseph	57	"	O	Pt 2	108	Renic, Merritt	56	"	O	Pt 12
35	Eddy, John A.	57	"	O	E c pt 1	109	Ryckman, Marshall	66	"	T	NW 1/2 9
36	Elliott, Nelson	8	"	O	Pts 4 5	110	Reid, S. G.	33	"	O	S c pt 7
37	Elliott, Oliver	59	"	O	Pts 4 5	111	Robertson, Wm.	57	Farmer	T	N pt 1
38	Eddy, Constant	33	"	O	N pt 1	112	Rice, Charles	62	"	O	S 1/2 8
39	Epps, Elliott	57	Blacksmith	T	Pt 1	113	Rice, Augustus	56	"	O	Pt 12
40	Eddy, Albert	59	Farmer	T	S pt n 1/2 5	114	Roswell, Wm.	66	"	T	S 1/2 12
41	Forsyth, Charles	66	"	T	Pt 4	115	Roswell, Jacob	57	"	O	S 1/2 3
42	Forman, William	66	"	O	Pt 12	116	Silverthorn, John N.	57	"	O	SE 1/2 8
43	Forsyth, Elijah	57	"	O	Pts 4 5 6	117	Smith, Wm.	57	"	O	Pts 1 2
44	Foster, William	57	Cabinet maker	O	E c pt 1	118	Slaght, Andrew	57	"	O	Pts 4 5
45	Gage, Russell O.	57	Farmer	O	Pts 4 5	119	Shelington, Alexander	57	"	O	E c pt 1
46	Gundy, James	66	"	O	S pt 1	120	Smith, James A.	57	"	O	Pts 2 4 5 6
47	Goring, Frederick A.	66	"	O	S c pt 12	121	Smith, Welby E.	57	"	T	Pts 2 4 5 6
48	Givens, Alexander	62	"	O	NE pt 12 13 & pt 12	122	Smith, Wallace E.	57	"	T	Pts 2 4 5 6
49	Glover, Anthony	58	"	O	E c pt 1	123	Smith, John	59	"	O	Pts 3 4 5
50	Glover, Robert	30	"	O	Pts 1 2	124	Smith, William M.	59	"	FS	Pts 3 4 5
51	Givens, John	62	"	O	Pt 12	125	Smith, John C.	59	"	FS	Pts 3 4 5
52	Givens, Elias	62	"	FS	Pt 12	126	Smith, Frank W.	57	"	O	Pts 4 5 6
53	Glenny, Peter	57	"	T	Pt 2	127	Smith, Daniel	62	"	O	Lot 10
54	Glenny, George E.	57	"	O	Pt 1	128	Smith, Augustus F.	62	"	FS	Lot 10
55	Glenny, James A.	57	"	O	Pt 1	129	Smith, Adrian W.	62	"	FS	Lot 10
56	Henderson, Robert	76	Laborer	T	W pt 7	130	Smith, Benjamin	57	"	O	Pt 4
57	Hillard, Samuel	72	Farmer	O	NW 1/2 3	131	Thompson, Henry R.	66	"	O	S pt 8
58	Hays, William	33	Minister	O	Pt 4	132	Tull, Henry	66	"	O	Pt 12
59	House, Leonard	57	Farmer	O	Pt S 1/2	133	Thompson, James	66	"	O	E 1/2 11
60	Hill, Thomas	66	"	O	C pt 12 13 & n w pt 12	134	Thompson, William	66	"	O	E 1/2 11
61	Harkinson, William	57	Laborer	O	S c pt 1	135	Tufford, Oliver	57	"	O	SW pt 6
62	Hooker, Albert	57	Wagonmaker	O	C pt 1	136	Tegart, Robert	57	"	T	SE pt 1
63	Hixon, Henry	57	"	O	E c pt 1	137	Wheeler, Thomas	57	"	O	S 1/2 n 1/2 3
64	Hooker, Walter	57	Merchant	O	E c pt 1	138	Weir, Henry	62	"	O	N pt 12
65	Harris, George	57	Laborer	O	SW c 1	139	Wilcox, William	57	"	O	E 1/2 6
66	Johnston, Richard, jr.	62	Farmer	T	W 1/2 9	140	Wardle, Cyrus	57	"	O	Pts 2 3
67	Johnston, Alexander	57	"	O	N c pt 1	141	Woodley, John	57	"	O	Pts 1 2
68	Kerr, Thomas	57	"	O	NW pt 6	142	Wheeland, Thomas	57	"	O	E c pt 1
69	Lounsbury, Jacob	66	Blacksmith	O	Pt 12	143	Wheeland, Charles	57	"	Oc	E c pt 1
70	Lockman, Erastus	66	Wagonmaker	O	Pt 12	144	Walker, Gideon	57	Baker	O	C c pt 1
71	Luke, William	33	"	FS	NE 1/2 9	145	Wheeland, James	57	Farmer	O	Pts 1 2
72	Malcolm, T. H.	57	Farmer	FS	S 1/2 1	146	Wingarden, Eliakim	66	"	O	NW 1/2 9
73	Murray, Michael	57	"	T	N 1/2 3	147	Wheeler, Thomas B.	57	"	T	Pt 3
74	Merritt, Gilbert	57	"	O	Pts 1 2	148	Wheeler, William A.	57	"	O	N 1/2 3

I, _____ the undersigned _____ do hereby certify that the foregoing list, consisting of _____ page is a true copy of the List of Voters for the Polling District Number _____ in the Electoral District of _____ as finally revised for the year 1889, under "The Electoral Franchise Act" Dated at _____ 18

