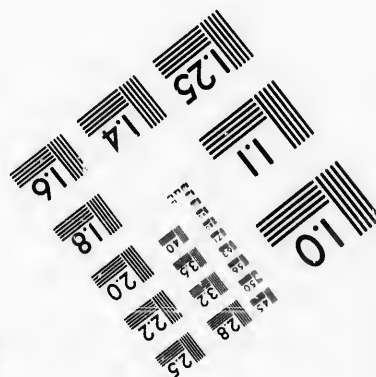
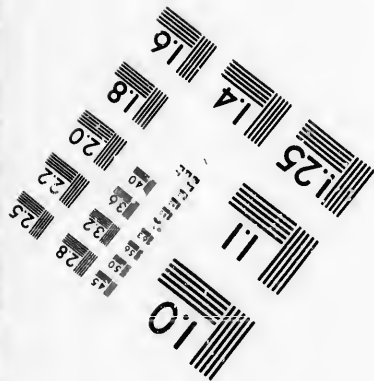
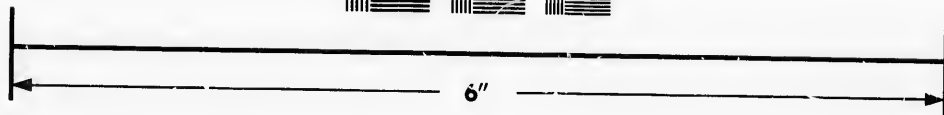
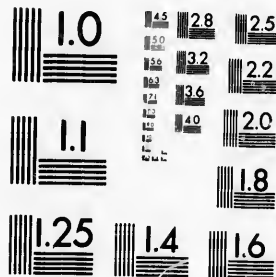


**IMAGE EVALUATION
TEST TARGET (MT-3)**



**Photographic
Sciences
Corporation**

23 WEST MAIN STREET
WERSTER, N.Y. 14580
(716) 872-4503



**CIHM/ICMH
Microfiche
Series.**

**CIHM/ICMH
Collection de
microfiches.**



Canadian Institute for Historical Microreproductions / Institut canadien de microreproductions historiques



© 1986

Technical end Bibliographic Notes/Notes techniques et bibliographiques

The Institute has attempted to obtain the best original copy available for filming. Features of this copy which may be bibliographically unique, which may alter any of the images in the reproduction, or which may significantly change the usual method of filming, are checked below.

L'Institut a microfilmé le meilleur exemplaire qu'il lui a été possible de se procurer. Les détails de cet exemplaire qui sont peut-être uniques du point de vue bibliographique, qui peuvent modifier une image reproduite, ou qui peuvent exiger une modification dans la méthode normale de filmage sont indiqués ci-dessous.

- | | |
|--|--|
| <input type="checkbox"/> Coloured covers/ Couverture de couleur | <input type="checkbox"/> Coloured pages/ Pages de couleur |
| <input type="checkbox"/> Covers damaged/ Couverture endommagée | <input type="checkbox"/> Pages damaged/ Pages endommagées |
| <input type="checkbox"/> Covers restored and/or laminated/ Couverture restaurée et/ou pelliculée | <input type="checkbox"/> Pages restored and/or laminated/ Pages restaurées et/ou pelliculées |
| <input type="checkbox"/> Cover title missing/ Le titre de couverture manquant | <input checked="" type="checkbox"/> Pages discoloured, stained or foxed/ Pages décolorées, tachetées ou piquées |
| <input type="checkbox"/> Coloured maps/ Cartes géographiques en couleur | <input type="checkbox"/> Pages detached/ Pages détachées |
| <input type="checkbox"/> Coloured ink (i.e. other than blue or black)/ Encre de couleur (i.e. autre que bleue ou noire) | <input checked="" type="checkbox"/> Showthrough/ Transparence |
| <input type="checkbox"/> Coloured plates and/or illustrations/ Planches et/ou illustrations en couleur | <input type="checkbox"/> Quality of print varies/ Qualité inégale de l'impression |
| <input type="checkbox"/> Bound with other material/ Relié avec d'autres documents | <input type="checkbox"/> Includes supplementary material/ Comprend du matériel supplémentaire |
| <input type="checkbox"/> Tight binding may cause shadows or distortion along interior margin/ La reliure serrée peut causer de l'ombre ou de la distorsion le long de la marge intérieure | <input type="checkbox"/> Only edition available/ Seule édition disponible |
| <input type="checkbox"/> Blank leaves added during restoration may appear within the text. Whenever possible, these have been omitted from filming/ Il se peut que certaines pages blanches ajoutées lors d'une restauration apparaissent dans le texte, mais, lorsque cela était possible, ces pages n'ont pas été filmées. | <input type="checkbox"/> Pages wholly or partially obscured by errata slips, tissues, etc., have been refilmed to ensure the best possible image/ Les pages totalement ou partiellement obscurcies par un feuillet d'errata, une pelure, etc., ont été filmées à nouveau de façon à obtenir la meilleure image possible. |
| <input checked="" type="checkbox"/> Additional comments:/ [Printed ephemera] [4] p. Commentaires supplémentaires: | |

This item is filmed at the reduction ratio checked below/
Ce document est filmé au taux de réduction indiqué ci-dessous.

| | | | | | |
|--------------------------|--------------------------|--------------------------|--------------------------|-------------------------------------|--------------------------|
| 10X | 14X | 18X | 22X | 26X | 30X |
| <input type="checkbox"/> | <input type="checkbox"/> | <input type="checkbox"/> | <input type="checkbox"/> | <input checked="" type="checkbox"/> | <input type="checkbox"/> |
| 12X | 16X | 20X | 24X | 28X | 32X |

The copy filmed here has been reproduced thanks to the generosity of:

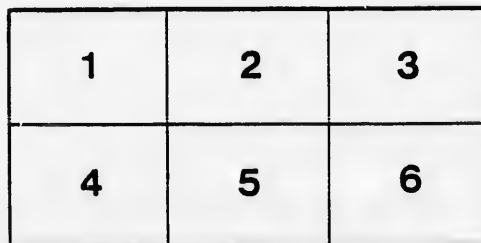
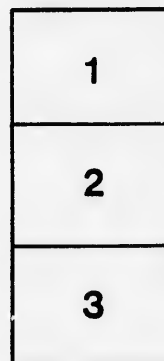
D. B. Weldon Library
University of Western Ontario
(Regional History Room)

The images appearing here are the best quality possible considering the condition and legibility of the original copy and in keeping with the filming contract specifications.

Original copies in printed paper covers are filmed beginning with the front cover and ending on the last page with a printed or illustrated impression, or the back cover when appropriate. All other original copies are filmed beginning on the first page with a printed or illustrated impression, and ending on the last page with a printed or illustrated impression.

The last recorded frame on each microfiche shall contain the symbol \rightarrow (meaning "CONTINUED"), or the symbol ∇ (meaning "END"), whichever applies.

Maps, plates, charts, etc., may be filmed at different reduction ratios. Those too large to be entirely included in one exposure are filmed beginning in the upper left hand corner, left to right and top to bottom, as many frames as required. The following diagrams illustrate the method:



L'exemplaire filmé fut reproduit grâce à la générosité de:

D. B. Weldon Library
University of Western Ontario
(Regional History Room)

Les images suivantes ont été reproduites avec le plus grand soin, compte tenu de la condition et de la netteté de l'exemplaire filmé, et en conformité avec les conditions du contrat de filmage.

Les exemplaires originaux dont la couverture en papier est imprimée sont filmés en commençant par le premier plat et en terminant soit par la dernière page qui comporte une empreinte d'impression ou d'illustration, soit par le second plat, selon le cas. Tous les autres exemplaires originaux sont filmés en commençant par la première page qui comporte une empreinte d'impression ou d'illustration et en terminant par la dernière page qui comporte une telle empreinte.

Un des symboles suivants apparaîtra sur la dernière image de chaque microfiche, selon le cas: le symbole \rightarrow signifie "A SUIVRE", le symbole ∇ signifie "FIN".

Les cartes, planches, tableaux, etc., peuvent être filmés à des taux de réduction différents. Lorsque le document est trop grand pour être reproduit en un seul cliché, il est filmé à partir de l'angle supérieur gauche, de gauche à droite, et de haut en bas, en prenant le nombre d'images nécessaire. Les diagrammes suivants illustrent la méthode.

etails
s du
odifier
une
image

errata
to

pelure,
n à



32X

LONDON P.T.B. & LITHO. CO.

MICHIGAN, OHIO
CANADIAN CIRCUIT

EIGHTEEN
THEATRES

CLEVELAND, CINCINNATI, BUFFALO,
DETROIT, TORONTO,
TOLEDO, LONDON, HAMILTON,
WOODSTOCK, BAGINAW,
GRAND RAPIDS, BAY CITY AND
JACKSON.



C. J. WHITNEY. A. E. ROOTE. ONTARIO.
LESSEE. MANAGER.



W. SMITH.

E. HOLLAND.

W. S. PARTRIDGE.

SMITH & BROS.

THE
LEADING
SANITARY
PLUMBERS
-AND-
HEATING
ENGINEERS
-OF-
WESTERN
ONTARIO.

376
RICHMOND STREET, LONDON.
OPPOSITE GRAND OPERA HOUSE BUILDING.

A full stock of Supplies always on hand.

TELEPHONE 538.

LADIES! THE ONLY WAY TO GET HELP IS THROUGH THE "FREE PRESS" WANT COLUMN.



Parisian
Steam
Laundry

73 & 75 DUNDAS STREET.

BRANCH OFFICES:

226 Dundas St. 752 Waterloo. 410 Hamilton Rd.
280 " " 572 Pall Mall. 251 Wellington.
310 " " 380 Richmond. 338 Ridout.
032 " " 485 " "

J. K. SPRY, Manager.

HUESTON'S

LIVERY,

Coupe & Cab Stables

WELLINGTON STREET.

Finest Horses and Carriages in the City.

OPEN DAY AND NIGHT. TELEPHONE 441.

ROBT. HUESTON,

Proprietor.

H. McKENNA,

—FOR—

Choice Cigars, Tobaccos

AND PIPES.

ALWAYS OPEN

..... AFTER THE OPERA.

225 DUNDAS STREET.

RIVARD

The Leading Hatter
and Furrier

HAS THE FINEST STOCK OF

FURS

IN THE CITY TO SELECT FROM.

HIS PRICES ARE RIGHT!

Rivard

London's Fashionable Hatter
and Furrier,

400 RICHMOND-ST.

WILLIAMS' Pianos CANADA'S FAVORITE

Cannot be excelled for touch, singing quality, delicacy and great power of tone, with highest excellence of workmanship.

ALL THE LATEST VOCAL AND INSTRUMENTAL MUSIC RECEIVED AS PUBLISHED.

Musical Instruments of all kinds, Strings and Fittings AT LOWEST PRICES.

R. S. WILLIAMS & SON, 171 DUNDAS STREET, LONDON, ONT.

J. A. CRODEN, Manager.

.. Play *and* Players ..

PROGRAMME

Three Nights & Two Matinees

COMMENCING THURSDAY, NOV. 23rd. 1893

THANKSGIVING MATINEE.

BAIRD'S
DRAMATIC COMPANY.

Will present the New York Success.

Queen's Evidence

CAST.

Solomon Isaacs (The Jew)..... R. H. Baird
Gilbert Medland..... Barry Harvey
Mathew Thornton..... Charles E. Bloomer
Sir Frederick Sydney..... Frank Sheldon
Walter Wynford..... Charles Haight
Joe..... R J Baird
MRS. MEDLAND..... LIZZIE BAIRD
Ada Sydney..... Florence Campbell
Little Arthur..... Victoria Baird

SYNOPSIS

ACT I.—Medland's Home. The Letter The Shot. I'm Blind.
ACT II.—The Lock Scene The Meeting of Mother and Son.
The Rescue.
ACT III.—Parlor in Sir Frederick's House. The Accusation.
I can. I've got a Heye like a Heagle.
ACT IV.—The Compact. The Signal. I dodged it. I got a
Heye like a Heagle.

FRANK SHELTON, in Songs.

VICTORIA BAIRD, in Fancy Dances.

(Programme continued on next page.)

FITZGERALD, SCANDRETT & CO.

109 Dundas Street.

— IMPORTERS OF —

English Biscuits, Fine Sardines,
Olives, Pickles,

— AND ALL LINES OF —

Staple and Fancy Groceries.

ESTABLISHED 1831.

H. DAVIS & SON,
WATCHMAKERS
— AND —
JEWELLERS

DEALERS IN

Watches, Clocks, Jewellery, Spectacles,
Silver Plated Ware, &c.

170 DUNDAS ST., LONDON, ONT.

W. T. STRONG

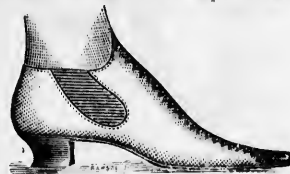
Dispensing
Chemist,

184 Dundas Street,
LONDON, - ONTARIO.

BROWN'S

Central Shoe Store,

145 DUNDAS ST.



DON'T FAIL TO SEE .. Brown's Special Lines

Ladies' Drawing-Room, Ball-Room,
Boudoir, Theatrical, Calisthenic,
Skating and Walking Shoes.
Overgaiters, Moccasins & Leggings.

INSPECT BROWN'S SPECIALS IN
Gents' Dress, Walking and Hockey Boots.
Latest New York and Chicago Tips

Newest Designs in Patents, Royal Tip, Gill Tan,
Bluchers and Bals, with Sootch Welts,
and the Celebrated Dowe's Felt Insole.

OVERSHOES, SPATS AND RUBBERS
IN ENDLESS VARIETY.
A beautiful assortment of Fancy Slippers
for Christmas and New Years.

See our Windows ..
Inspect our Goods ..
Ascertain our Prices

And we are sure you will be agreeably
surprised.

John S. Brown,

TELEPHONE 681.

IF YOU WANT THE BEST, TAKE THE "FREE PRESS." ALL THE NEWS!

—GO TO—
SOUTHCOTTS
 —FOR YOUR—
Overcoating
 —OR—
FALL & SUITING
 AND GET SATISFACTION AT
 CLOSE PRICES.
361 RICHMOND STREET.

GRAHAM BROS
 FOR
Fall and Winter Underclothing
 ALL SIZES AND WEIGHTS.
CHEAPEST STOCK IN THE CITY.
159 DUNDAS STREET,

Wm. Stevely & Son,
 — THE LEADING DEALERS IN —
STOVES, RANGES,
 .. AND ..
HOUSE FURNISHING GOODS.
 OUR STOCK IS THE LARGEST.
 OUR PRICES THE LOWEST.
362 RICHMOND STREET.
 'PHONE 452.

I-I-I-I-I-I-I-I-I-I

PRINTERS
 LITHOGRAPHERS
 ENGRAVERS

The _____
London
Printing and
Lithographing
Co'y,

SUCCESSORS TO FREE PRESS
 PRINTING AND LITHO.
 DEPARTMENTS.

OFFICE,
 "FREE PRESS"
 BUILDING.

BEST WORK
 AT MODERATE
 PRICES.

I-I-I-I-I-I-I-I-I-I

TEGUMSEH HOUSE
 LONDON.



Directly opposite G.T.R depot;
 street railway past the doors;
 convenient to all the wholesale
 and retail business houses of
 city, making it the most desir-
 able hotel in the city; elevator,
 and heated throughout with
 steam.

Porter in attendance on
 arrival of all trains.

RATES, \$2.00 AND \$2.50
PER DAY,

ACCORDING TO LOCATION.

No Extra Charge For Baggage.

C. W. DAVIS, PROP.

«Programme Continued.»

Thursday (Thanksgiving) Night,
BAIRD'S DRAMATIC CO.
 Will present the Laughable Comedy,
Joshua Whitecomb
THE NEW ENGLAND FARMER.
 IN FOUR ACTS.

CAST.

| | |
|---------------------------------|-------------------|
| Uncle Josh (The Farmer)..... | R. H. Baird |
| John Martin..... | Charles Haight |
| Fred Doby..... | R. J. Baird |
| Bill Johnson..... | Barry Harvey |
| Si Prime..... | Frank Sheldon |
| Reuben Whitcomb..... | Chas. Bloomer |
| Sheriff..... | Geo. Bartlett |
| Ronny..... | Lizzie Baird |
| Nellie Primrose..... | Florence Campbell |
| Susie Connell..... | Edith Bartlett |
| Mrs. Johnson..... | Lizzie Baird |
| Aunt Tilda..... | Victoria Baird |
| Tot (the Crossing Sweeper)..... | |

SYNOPSIS.

ACT I.—Arrival of Uncle Josh.
 ACT II.—Uncle Josh at the Birthday Party.
 ACT III.—Uncle Josh at the Drunkard's Home.
 ACT IV.—Homestead of Uncle Joshua.

New Songs and New Dances!
"BY GOSH."

Specialties by Members of Company.

(Programme continued on last page.)

McLEAN'S HARDWARE

—FOR—

Bissell's Carpet Sweepers.

WE CAN SHOW YOU TWELVE DIFFERENT STYLES SAME
 AS ARE NOW DISPLAYED BY THE BISSELL COM-
 PANY AT THE WORLD'S FAIR.

CALL AND SEE THESE GOODS

—AT—

McLEAN'S HARDWARE,
151 Dundas Street.

W. T. STRONG,
 Dispensing
 Chemist,
184 DUNDAS ST.,
 LONDON, ONT.

.. FOR ..

Fine Etchings....

—AND—

Engravings

—TRY—

O. B. GRAVES,
 222 DUNDAS STREET.

A WORD

TO the gentlemen patrons of
 the GRAND. You can
 have your full dress suit pressed
 and cleared up on short notice
 by sending it to the LONDON
 CLEANING AND REPAIRING
 WORKS.

We do not wash your clothes,
 but have them renovated by
 first-class tailors who repair
 them as well.

Parcels called for and deli-
 vered. Office of works in the
 Arcade Barber Shop, Richmond
 Street. 'PHONE 981.

GLOVES
— IN —
SILK & KID
— IN —
18 to 30 inch,
IN ALL THE NEW SHADES.

OPERA
FANS

TELEPHONE 611.

EVENING GOODS

A. Rolfe

OPERA
HOSE

We show the largest range of **S-I-L-K-S** IN THE CITY.
OUR NEW **Velour Cloth** IS THE LATEST.
In all the New Tints, With Trimming to Match.
FINE DRESSMAKING.
202 DUNDAS STREET.

EDY BROS.

The Artistic Photographers,

— RECEIVED —

Three First Prizes

— AND —

DIPLOMA

For Finest Display of Photography AT WESTERN FAIR, 1893.

Cabinet Photos, \$3 per doz.

EDY BROS.,

214 DUNDAS STREET.

The **HUB**

Restaurant,

203 & 205 DUNDAS STREET.

For a NICE LUNCH after the Opera, go to the

Hub Restaurant.

Steaks, Chops, Chicken, Oysters, Etc.

OPEN TILL 12.00 P.M.

J. W. MARTIN, Prop.
(Late of the Martin House)

« Programme Concluded. »

During the evening, incidental to the stage performance, the ORCHESTRA of the Grand Opera House, under the direction of MR. FRED. L. EVANS, will perform the following selections:

- OVERTURE—"Sunny South,"..... Isenman
- LANCERS—"Grand Duchess,"..... Offenbach
- XYLOPHONE SOLO—"Cameo Polka,"..... Muller
- WALTZ—"Hochzeits-Klange,"..... Strauss
- GALOP—"Beauty,"..... Warren

The above programme subject to transposition.

N. B.—The Orchestra of the Grand Opera House may be secured for engagements outside the theatre, by applying at or addressing the Box Office.

The Furniture used on stage is supplied by JOHN FERGUSON & SON, Furniture Manufacturers.

NEXT + ATTRACTION

Thursday, Friday and Saturday,
Nov. 23rd, 24th and 25th.

Matinees: Thanksgiving Day & Saturday
POPULAR PRICES, 15c., 25c. and 35c.

PLAN NOW OPEN.

R. H. BAIRD'S
Dramatic and Comedy Co.

IN REPERTOIRE OF POPULAR PLAYS.

THANKSGIVING MATINEE:

QUEEN'S EVIDENCE

THANKSGIVING NIGHT:

JOSHUA WHITCOMB

Coming—**WANG!**



"BETWEEN THE ACTS"

CONSIDER that the theatrical season and the coal-burning season start about the same time, and make a note of it that we fill all orders, large or small, in a prompt and satisfactory manner.

CAMERON'S

CITY OFFICE, - 421 Richmond St.
YARD, - - Burwell St., at G.T.R.

WE call the attention of our business men to the PROGRAM as an advertising medium. It reaches the class of people whose trade you want, and the way to get that trade is to make yourself known.

BELTON & ROOTE,

BILL POSTING,

DISTRIBUTING

...AND...

GENERAL ADVERTISING AGENTS

Control all the Bill Boards and Dead Walls throughout the City. Population of City, 40,000.

All orders for Bill Posting, Distributing, Card Tacking, and General Advertising for Western Ontario will receive prompt attention.

OFFICE: BOX OFFICE, OPERA HOUSE.

Roses, Carnations,

Palms,

Ferns, Bulbs,

J. GAMMAGE & SONS,

213 Dundas Street.

INDIAN... TEA IMPORTING HOUSE.
CEYLON

NEW BLENDS, DELICIOUS AND ECONOMICAL, AT MODERATE PRICES.

"English Breakfast," "Five o'clock Tea," & "Club House" Blends.
60c. 50c. 45c.

These Blends are standard selections of choice Teas. Highly recommended to families for their fine quality and economical properties.

S. FUGE,

—IMPORTER OF—
CHOICE TEAS 436 Richmond St.
TELEPHONE 858. LONDON.

