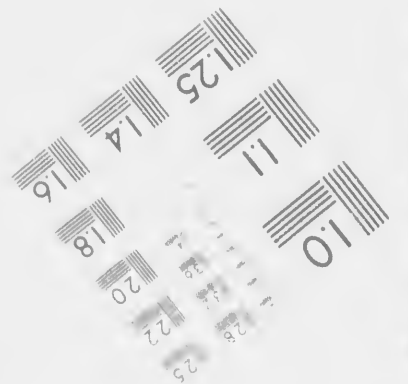
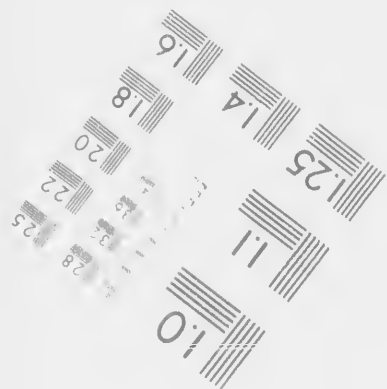


IMAGE EVALUATION
TEST TARGET (MT-3)



Photographic
Sciences
Corporation

23 WEST MAIN STREET
WEBSTER N Y 14580
716 872-4503

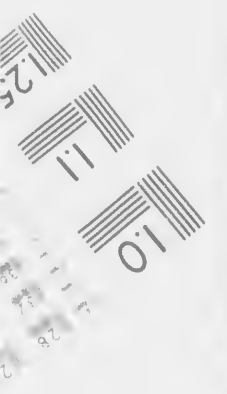


CIHM/ICMH
Microfiche
Series.

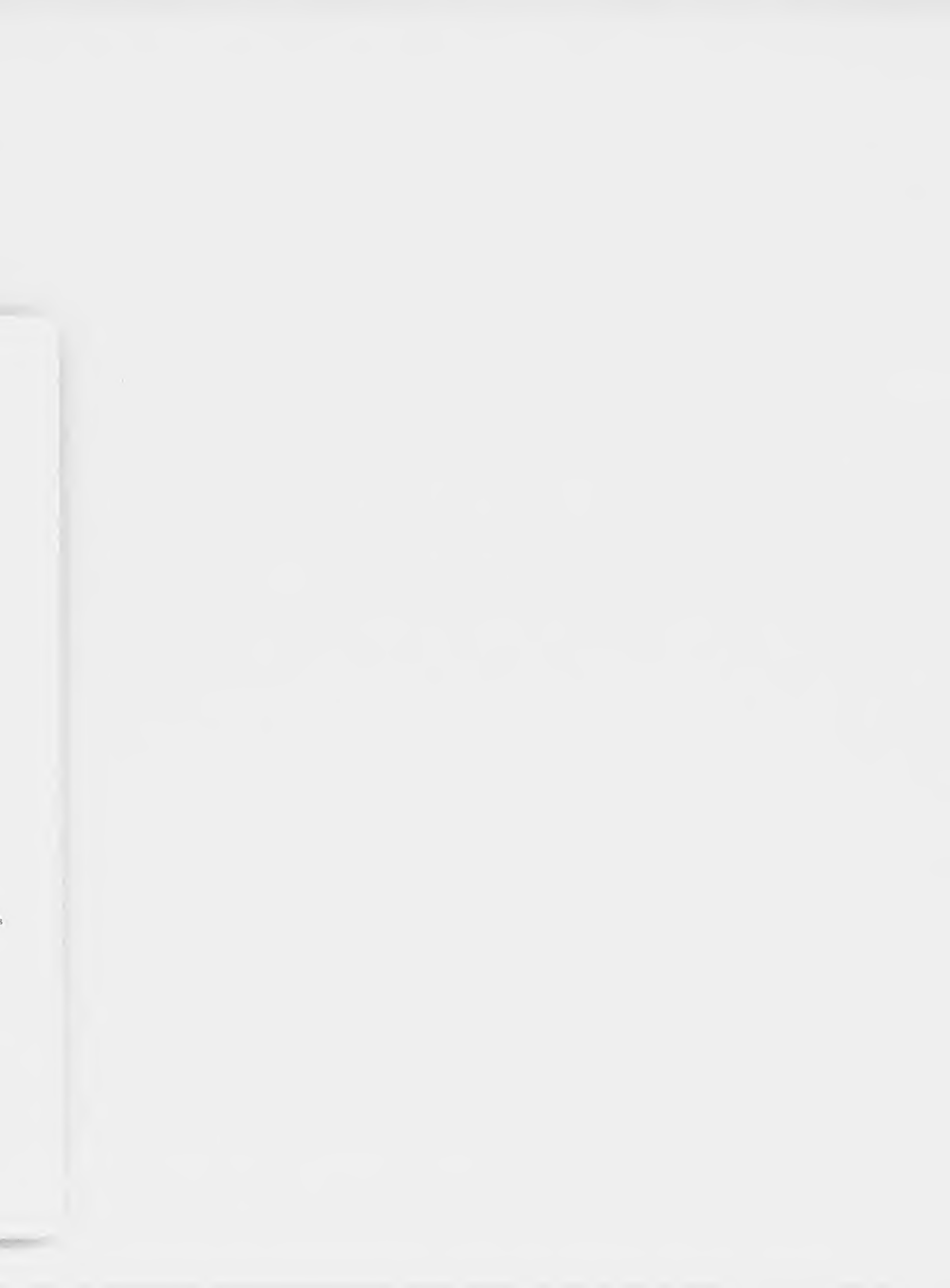
CIHM/ICMH
Collection de
microfiches.



Canadian Institute for Historical Microreproductions / Institut canadien de microreproductions historiques



© 1986





Chan

FAR

TOWNS

COUNTY

Pursuant to the Decree and an o
Gilroy, and bearing date respective
sale by

il
Chancery Sale
OF

BRM LON

IN THE
TOWNSHIP OF REACH
IN THE

NTY OF ONTARIO

ree and an order made by the Court of Chancery, in a cause of
respectively the 26th and 28th days of June, 1876, there will b

FOR A T T O R N E Y

ale

ENTS

ACH

ARIO.

a cause of Holliday vs.
there will be offered for

ENT





The copy filmed here has been reproduced thanks to the generosity of:

Douglas Library
Queen's University

The images appearing here are the best quality possible considering the condition and legibility of the original copy and in keeping with the filming contract specifications.

Original copies in printed paper covers are filmed beginning with the front cover and ending on the last page with a printed or illustrated impression, or the back cover when appropriate. All other original copies are filmed beginning on the first page with a printed or illustrated impression, and ending on the last page with a printed or illustrated impression.

The last recorded frame on each microfiche shall contain the symbol \rightarrow (meaning "CONTINUED"), or the symbol ∇ (meaning "END"), whichever applies.

Maps, plates, charts, etc., may be filmed at different reduction ratios. Those too large to be entirely included in one exposure are filmed beginning in the upper left hand corner, left to right and top to bottom, as many frames as required. The following diagrams illustrate the method



L'exemplaire filmé fut reproduit grâce à la générosité de

Douglas Library
Queen's University

Les images suivantes ont été reproduites avec le plus grand soin, compte tenu de la condition et de la netteté de l'exemplaire filmé, et en conformité avec les conditions du contrat de filmage.

Les exemplaires originaux dont la couverture en papier est imprimée sont filmés en commençant par le premier plat et en terminant soit par la dernière page qui comporte une empreinte d'impression ou d'illustration, soit par le second plat, selon le cas. Tous les autres exemplaires originaux sont filmés en commençant par la première page qui comporte une empreinte d'impression ou d'illustration et en terminant par la dernière page qui comporte une telle empreinte.

Un des symboles suivants apparaîtra sur la dernière image de chaque microfiche, selon le cas: le symbole \rightarrow signifie "A SUIVRE", le symbole ∇ signifie "FIN".

Les cartes, planches, tableaux, etc., peuvent être filmés à des taux de réduction différents. Lorsque le document est trop grand pour être reproduit en un seul cliché, il est filmé à partir de l'angle supérieur gauche, de gauche à droite, et de haut en bas, en prenant le nombre d'images nécessaire. Les diagrammes suivants illustrent la méthode.

mpiaire
Les détails
uniques du
vent modifier
exiger une
e de filmage

es
ed.
briques

ntaire

ed by errata
almed to

ment
r, une pelure
e façon a
le

32X

le
t

n
nt

d

bar

tre

e.



Pursuant to the Decree and an order of the Court in the case of **Gilroy**, and bearing date respectively **sale by**

PUBLIC

in three separate parcels, with the approbation of the **Auctioneer**, at the **GLOBE HOTEL**, in the

VILLAGE OF BR

ON SATURDAY

at **NOON**, the following lands and premises:

PARCEL No. 1. The South three quarters of Lot Number One, be the same more or less, of which 130 acres are cleared and erected on this parcel a good frame barn with cowshed and dwelling house. The property is situate about ten miles and is distant about one mile and a-half from **Myrtle S**

PARCEL No. 2. The South-West part of Lot Number One, containing $81\frac{15}{100}$ acres, be the same more or less, and distant from the North West corner of Lot Number 22, thence North 16 degrees, West 30 chains, thence South 74 degrees, West 10 chains, more or less, to the centre of the said Concession; thence South 74 degrees, East 50 chains, more or less, to the South-West place of beginning; all of which is cleared. There is a stable, and open sheds. It is situate about one mile

PARCEL No. 3. Village Lot Number Eleven, in the Township of Esquire, P.L.S., of part of Lot Number Seventeen, in the Registry Office for the County of Ontario, save and except in and to one Charles T. Young, by deed bearing date the Eighteenth day of August, 1876, hereby to be sold being thirty-eight feet in width, fronting on the said lot contains one quarter of an acre, be the same more or less, and a number of fruit trees.

CONDI

As to parcel number three no evidences of title will be given on or before the fourteenth of November, One Thousand Eight Hundred and Eighty Six, nor to furnish any other deeds or copies of the same.

Each parcel will be offered subject to a reserved bid, fixed by the Auctioneer, to William Kerr and John Kerr, dated seventeenth of August, 1876, for the sum of Thirty dollars annually. The particulars of which Lease can be had on application to the Auctioneer.

The purchasers shall at the time of sale, pay down a deposit of one hundred dollars, and the balance in three equal annual instalments, with interest at seven per cent. payable yearly on the first day of August.

For further particulars apply to John Hoskin, Vendor's Solicitor.

Dated 31st day of August, 1876.

JOHN HOSKIN Vendor's Solicitor

a cause of Holliday vs.
there will be offered for

FIION

t, at Whitby, by Levi Fairbanks.

TARIO,

SEPTEMBER

ip of Reach, containing 150 acres,
with Beech and Maple. There is
stable. There is also a good frame
and Port Perry Gravel Road, and

n the said County of Ontario, con-
South-East angle of the said Lot
d by Alexander Kitchen; thence
est 20 chains, more or less, to the
it of the said lot; thence South 16
ast 20 chains, more or less, to the
e, a frame barn, cow-stable, horse-
illes from the Town of Whitby.

n on a plan made by John Shaw,
h, which said plan is filed in the
en, conveyed by one Amy P. John-
ed and Seventy; the said parcel of land
length of said Lot Number Eleven. The
stable. There is also a good well of water

E

me Holliday by Willian Rattenbury, dated
hall not be bound to produce any further

e for nine years, made by the late Jackson
the rent payable is Three Hundred and

r into Court without interest, within one
ain on Mortgage, payable in seven equal
nditions of Sale of the Court of Chancery.
o.

L, Master at Whitby.





