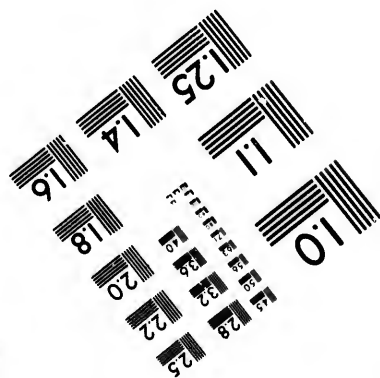
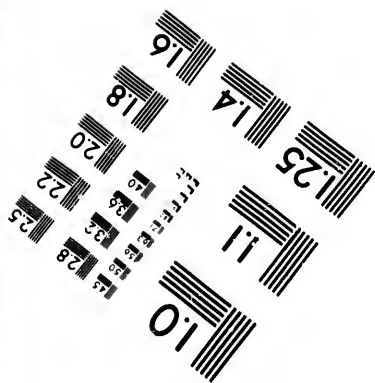
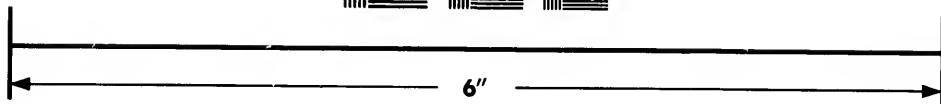
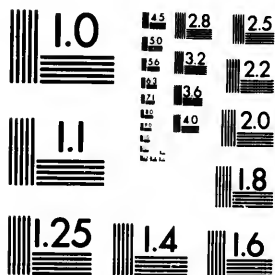
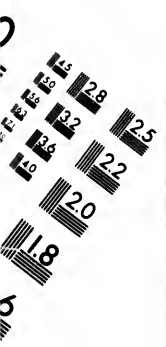


**IMAGE EVALUATION  
TEST TARGET (MT-3)**



**Photographic  
Sciences  
Corporation**

23 WEST MAIN STREET  
WEBSTER, N.Y. 14580  
(716) 672-4503



**CIHM/ICMH  
Microfiche  
Series.**

**CIHM/ICMH  
Collection de  
microfiches.**



Canadian Institute for Historical Microreproductions / Institut canadien de microreproductions historiques



**© 1982**

Technical and Bibliographic Notes/Notes techniques et bibliographiques

The Institute has attempted to obtain the best original copy available for filming. Features of this copy which may be bibliographically unique, which may alter any of the images in the reproduction, or which may significantly change the usual method of filming, are checked below.

L'Institut a microfilmé le meilleur exemplaire qu'il lui a été possible de se procurer. Les détails de cet exemplaire qui sont peut-être uniques du point de vue bibliographique, qui peuvent modifier une image reproduite, ou qui peuvent exiger une modification dans la méthode normale de filmage sont indiqués ci-dessous.

- Coloured covers/  
Couverture de couleur
- Covers damaged/  
Couverture endommagée
- Covers restored and/or laminated/  
Couverture restaurée et/ou pelliculée
- Cover title missing/  
Le titre de couverture manque
- Coloured maps/  
Cartes géographiques en couleur
- Coloured ink (i.e. other than blue or black)/  
Encre de couleur (i.e. autre que bleue ou noire)
- Coloured plates and/or illustrations/  
Planches et/ou illustrations en couleur
- Bound with other material/  
Relié avec d'autres documents
- Tight binding may cause shadows or distortion along interior margin/  
La reliure serrée peut causer de l'ombre ou de la distorsion le long de la marge intérieure
- Blank leaves added during restoration may appear within the text. Whenever possible, these have been omitted from filming/  
Il se peut que certaines pages blanches ajoutées lors d'une restauration n'apparaissent dans le texte, mais, lorsque cela était possible, ces pages n'ont pas été filmées.
- Additional comments:  
Commentaires supplémentaires:

- Coloured pages/  
Pages de couleur
- Pages damaged/  
Pages endommagées
- Pages restored and/or laminated/  
Pages restaurées et/ou pelliculées
- Pages discoloured, stained or foxed/  
Pages décolorées, tachetées ou piquées
- Pages detached/  
Pages détachées
- Showthrough/  
Transparence
- Quality of print varies/  
Qualité inégale de l'impression
- Includes supplementary material/  
Comprend du matériel supplémentaire
- Only edition available/  
Seule édition disponible
- Pages wholly or partially obscured by errata slips, tissues, etc., have been refilmed to ensure the best possible image/  
Les pages totalement ou partiellement obscurcies par un feuillet d'errata, une pelure, etc., ont été filmées à nouveau de façon à obtenir la meilleure image possible.

This item is filmed at the reduction ratio checked below/  
Ce document est filmé au taux de réduction indiqué ci-dessous.

10X	12X	14X	16X	18X	20X	22X	24X	26X	28X	30X	32X
									✓		

The copy filmed here has been reproduced thanks to the generosity of:

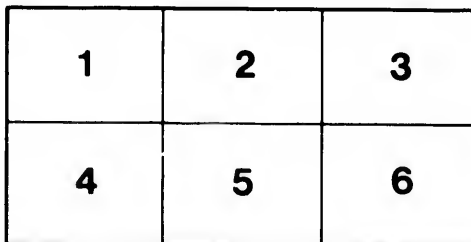
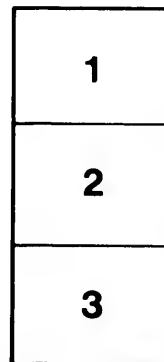
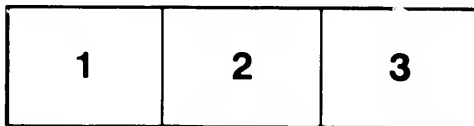
Library Division  
Provincial Archives of British Columbia

The images appearing here are the best quality possible considering the condition and legibility of the original copy and in keeping with the filming contract specifications.

Original copies in printed paper covers are filmed beginning with the front cover and ending on the last page with a printed or illustrated impression, or the back cover when appropriate. All other original copies are filmed beginning on the first page with a printed or illustrated impression, and ending on the last page with a printed or illustrated impression.

The last recorded frame on each microfiche shall contain the symbol → (meaning "CONTINUED"), or the symbol ▼ (meaning "END"), whichever applies.

Maps, plates, charts, etc., may be filmed at different reduction ratios. Those too large to be entirely included in one exposure are filmed beginning in the upper left hand corner, left to right and top to bottom, as many frames as required. The following diagrams illustrate the method:



L'exemplaire filmé fut reproduit grâce à la générosité de:

Library Division  
Provincial Archives of British Columbia

Les images suivantes ont été reproduites avec le plus grand soin, compte tenu de la condition et de la netteté de l'exemplaire filmé, et en conformité avec les conditions du contrat de filmage.

Les exemplaires originaux dont la couverture en papier est imprimée sont filmés en commençant par le premier plat et en terminant soit par la dernière page qui comporte une empreinte d'impression ou d'illustration, soit par le second plat, selon le cas. Tous les autres exemplaires originaux sont filmés en commençant par la première page qui comporte une empreinte d'impression ou d'illustration et en terminant par la dernière page qui comporte une telle empreinte.

Un des symboles suivants apparaît sur la dernière image de chaque microfiche, selon le cas: le symbole → signifie "A SUIVRE", le symbole ▼ signifie "FIN".

Les cartes, planches, tableaux, etc., peuvent être filmés à des taux de réduction différents. Lorsque le document est trop grand pour être reproduit en un seul cliché, il est filmé à partir de l'angle supérieur gauche, de gauche à droite, et de haut en bas, en prenant le nombre d'images nécessaire. Les diagrammes suivants illustrent la méthode.

ails  
du  
modifier  
une  
page

rata  
o

elure,  
à

# VICTORIA THEATRE PROGRAMME

**OFFICIAL PROGRAMME**  
of the Victoria Theatre.

F. B. WILLIAMS, PUBLISHER.

Advertising space in this Programme can be had by applying at Jamieson's Book Store or to F. B. Williams at the office of the Province Publishing Co., 15 Broad St.

**PRICES.**

There will not be any regular or established prices for attractions that are booked to appear at the Victoria Theatre. All the standard first-class dramatic and operatic companies that visit the Pacific coast will be here, and the prevailing prices will be

- Gallery ..... 50
- Orchestra Chairs ..... 1 00
- Orchestra Circle ..... 75
- Dress Circle ..... 1 00

Prices will only be advanced when absolutely necessary. Large and high-salaried companies cannot be expected to play at usual prices.

Read THE PROGRAMME, and take it home with you and send it to your friends in the East.

**RULES AND REGULATIONS.**

The evening performance will commence at 8 o'clock, and the matinee at 2 o'clock.

The doors will be open at 7.30 p.m. and for matinees at 1.30 p.m.

Children in arms not admitted.

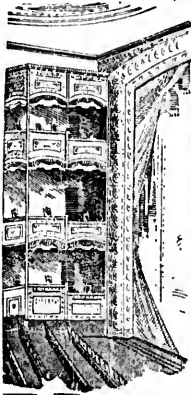
Seats can be ordered by telephone Jamieson's theatre telephone—number 68.

Ushers are prohibited from receiving fees.

Please report to the management any incivility on the part of the employees.

Carriages may be ordered for the evening performance at 10.30 p.m., and for the matinee at 4.30.

1,000 Each Performance.



Lessee and Manager  
**ROBERT JAMIESON,**



**WEDNESDAY, FEB. 19TH.**

ANNUAL TOUR

**MR. LOUIS JAMES**

Management of WAGENHALS & KEMPER.

Shakespeare's Immortal Tragedy,

**OTHELLO**

IN SEVEN TABLEAUX.

*Sivannah* is the Leading FOTOGRAFER

## NORTHERN PACIFIC

**RAILROAD**

A. F. BURRIDGE, Receiver.

CALENDAR TIME CARD

OF THROUGH TRAINS

East-Bound.

Train No. 2 The Atlanti.	Leave	Arrive
	Victoria	Fargo
	11.45 a.m.	10.2 a.m.
	Tacoma	Minneapolis
	5.20 p.m.	8.0 p.m.
	Seattle	St. Paul
	4.20 p.m.	6.0 p.m.
	Monday	Thursday
	Tuesday	Friday
	Wednesday	Saturday
	Thursday	Sunday
	Friday	Monday
	Saturday	Tuesday
	Sunday	Wednesday

Through

Vestibuled Pullman  
Palace Sleepers.  
Pullman Tourist  
Sleepers (upholstered).  
And Free Colonist  
Sleepers

Run on the above trains.

Dining Cars are carried Day and Night on the above trains.

THROUGH TICKETS TO

St. Paul, Minneapolis, Duluth, Fargo, Grand Forks, Crookston, Winnipeg, Helena and Butte, Chicago, Philadelphia, Washington, New York, Boston and all Points East and South.

PUGET SOUND STEAMERS

Speed 18 knots	VICTORIA ROUTE	Tonnage 1117
8.30 pm Lv.	Victoria	Ar 4.30 pm
11.45 pm	Port Townsend	1.30 pm
3.0 am	Seattle	10.15 am
4.45 am Ar.	Tacoma	Lv 8.00 am

For information, Time Cards, Maps and Tickets, call on or write to

**E. E. BLACKWOOD,**  
Agent, Government Street,  
VICTORIA, B.C.

**A. D. CHARLTON,**  
Asst. General Passenger Agent,  
PORTLAND, Or.

**A Sears**

Successor to  
Joseph Sears

will occupy the  
old premises  
No. 114 Yates  
Street.

P. O. Box 289. TELE. 121

**M. R. SMITH & CO.**

(Established 1858.)

**Biscuit  
Manufacturers**

57-59 FORT STREET,  
VICTORIA, B.C.

Write for price list.

## SOMETHING NEW AND GOOD.

THE ONLY NON-DYSPEPTIC  
HOT CAKES!

Self-Raising

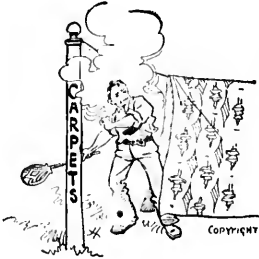
Hot Cakes made from this combination of meals are delicious and easily digested. Just try them.

FOR SALE BY ALL GROCERS

**FRANK B. PETERSON & CO., SAN FRANCISCO,**  
COAST AGENTS.



# Carpet Cleaning by Machinery.



After the dust.

The old-fashioned style of getting the dust out of carpets is now a thing of the past.

Our **ROTARY WHEEL** is the best process yet invented for this purpose, and is used in all the large cities.

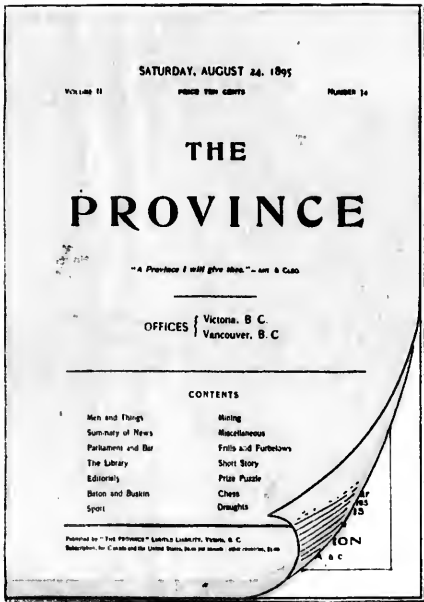
It is not necessary to wait for fine weather. We can clean your Carpets or Rugs if it rains or shines, and very much better and safer than it can be done by hand.

## Complete House Furnishings

# WEILER BROS.

Factory, Humboldt Street.

Showrooms, 51 to 55 Fort Street



## 10,000 PAPER NOVELS at TEN CENTS EACH

We are clearing out almost our entire line of Paper Novels, to make room for newer and better additions just ordered, they are

**"Selling Like Hot Cakes."**

If you want any sort of choice at above figure you will have to come at once.

## ROBERT JAMIESON,

Books and Stationery.

61 Government Street.

## Pacific Sauce and Vinegar Works,

estab. 1885. Factory and Office 66-68 Blanchard St.

H. J. BRADY & CO., Proprs.

Manufacturers and Packers of the "Standard" Brands of Worcester Sauce, Malt, Wine and other Vinegars, Pickles, Tomato Ketchup, Apple and Orange Ciders, Flavoring Extracts, Fruit Syrups, Etc., Etc.

After the Performance, go to **THE IMPERIAL RESTAURANT, BROAD ST.,** for an Oyster Supper.

Munn, H. Pr

Vict

The ke

Now is

Su

S

Impe

for an Oyster Supper.

y.  
w a  
this  
our  
and  
gs  
reet  
EACH  
e line of  
wer and  
ve figure  
nt Street.  
" Brands of  
rs, Pickles,  
avoring Ex-

After the Performance, go to  
**THE IMPERIAL RESTAURANT, BROAD ST.,**  
for an Oyster Supper.



**WELLINGTON COAL**  
(JORDAN'S MINE)  
—APPLY—  
Munn, Holland & Co. or Rock Bay Wharf  
Price: \$8 per ton delivered.

**ST. ALICE**  
**MINERAL WATER**  
FROM  
Harrison Hot Springs  
**THORPE & COY.**  
LIMITED LIABILITY,  
VICTORIA - VANCOUVER,  
Telephone 435. Box 175. Telephone 181. Box 505.

**Mr. and Mrs. Kosche**  
IMPORTERS OF  
**FINE FRENCH HAIR GOODS**



Ladies' Hair Dressers  
—  
Practical Wig Making  
—  
Wigs for Hirs

**31 - GOVERNMENT - STREET VICTORIA, 'B.C.**

**NEW LILY BULBS**  
—AT—  
**ORIENTAL BAZAAR**  
Lilium Auratum  
Lilium Spaciosum Album  
Everything Curious  
Silk Goods. Cheapest in the town.  
**A. WANIBE,**  
90 DOUGLAS ST.

**Victoria Transfer Company,** CARRIAGES, LIVERY, BAGGAGE  
21 and 23 BROUGHTON STREET. **WAGONS.** Telephone 129.

**PROGRAMME.**

Othello .....	Louis James
Iago .....	Guy Lindsley
Cassio .....	Wm. Harris
The Duke .....	James Harrison
Brabantie .....	Harry Langdon
Gratiano .....	Wm. Hunt
Roderigo .....	Thomas C. Cook
Montano .....	Wilfred North
Lodovico .....	Richard Waite
Antonio .....	George Powell
Messenger .....	Charles Penley
Desdemona .....	Miss Alma Kruger
Emilla .....	Miss Florence Everett

*Swanich* Has Five Medals Awarded for Superior Photos.

**The Snow and Rain keep you indoors**  
—  
Now is the time to read  
—  
Subscribe to the "M.K." SYSTEM

**The Snow and Rain keep you indoors**  
—  
Now is the time to read  
—  
Subscribe to the "M.K." SYSTEM

**Imperial Manufacturing Company** CHAS. PHILLIPS, Prop. 8 YATES STREET.  
MANUFACTURERS OF HOME MADE KETCHUP, VINEGARS, SAUCE, WASHING SODA and FRUIT SYRUPS. TELEPHONE, 413.

**Don't You Believe It There's Nothing In It**



But the "Simon Pure" oats. That talk about mill sweepings is all "high Biddy Martin" and a great big Elephant on THEIR hands. Try a 7 lb. sack of

**OUR ROLLED OATS**

and if you do not find them all right we will eat them ourselves—they are the clean Bougout.

We offer this week a tin of Peaches, Apricots or Plums for 20 cents. Fresh Island Eggs, 25 cents. Sugar has gone up 4-cent per pound.

**DIXI H. ROSS & CO.**

—A Fine Line of—  
**GENTS' FURNISHINGS**  
 Has just arrived.

—  
 Our Latest Styles in ...  
**AMERICAN NECKWEAR**  
 ... Cannot be Equalled

—  
 Give Us a call and convince  
 yourself.

—  
**W. N. Garmichael & Co.**  
 65 YATES STREET.

# COAL

Our best double-screened Coal on Wharf  
 at \$5.00 per ton. Delivery, extra.

## TRY OUR NUT COAL ?

Highly recommended for Furnaces and  
 Kitchen Ranges.

We are reliable ; and guarantee in every  
 case 2,000 pounds to the ton.

# SPRATT & MACAULAY

ADELPHI BLOCK. GOVERNMENT ST.  
 TERMS, CASH. . . . . Telephone, 403.

If you have  
 a **WATCH**  
 or **CLOCK**  
 that needs  
**REPAIRING**  
 take it to  
**Chris. Moody**  
**WATCHMAKER**  
 52  
 Government  
 Street.

## The Bank Exchange

The Coziest, Cleanest and Cheapest Res-  
 taurant in Town. Meals at all hours.  
 Private Dining Rooms upstairs.

GO TO THE

### Programme—Continued.

Act I.—A Street in Venice.  
 Act II.—The Senate Chamber.  
 Act III.—A Seaport in Cypress.  
 Act IV.—A Room in Othello's House.  
 Act V.—Scene 1—A Room in Othello's House. Scene 2—A Street. Scene 3—  
 A Port in Cypress.  
 Act VI.—Room in Othello's House.  
 NOTE—After Acts IV. and V. there will be no intermission.

Business Representative . . . . . J. M. Handley  
 Advance Agent . . . . . Percy Sage

### MUSICAL PROGRAMME:

MARCH . . . . . "Minute Man" . . . . . *Catlin*  
 OVERTURE . . . . . "Poet and Peasant" . . . . . *Suppe*  
 WALTZ . . . . . "Loves' Pledge" . . . . . *Langley*  
 OVERTURE . . . . . "Jolly Robbers" . . . . . *Suppe*  
 DANSE DES . . . . . "Sultanes" . . . . . *Daniels*  
 SELECTION . . . . . "Vandeville Echoes" . . . . . *Hindley*

## CITY CANDY FACTORY

For the  
 Finest Candies  
 and the  
 Choicest Fruit  
 in the city.

A Refreshing Drink of Arc-  
 tic Soda, only 5 cents a  
 glass.

## H. A. LILLEY

105 Douglas Street,  
 Victoria, B.C.

## Next Attraction **UNCLE JOSH SPRUCEBY**

FEbruary 26th

## **DRIARD BAR**, First-Class in Every Respect.

Theatre Curtain Bell at Rise of Curtain.

## JNO. M. FINN

1 Springfield Ave. - - Victoria, B.C.

P.O. Box 4.

### MUSIC FURNISHED FOR ALL OCCASIONS.

Music Re-written, Transposed, Arranged and Composed for the Voice, Piano or any Instrument  
 Orders can be left at Jamieson's Bookstore.

## Stubs' Vegetable Blood Purifier

A True Nerve Tonic, A Reliable Laxative and Diuretic. This famous remedy never fails to give  
 satisfaction. It cures Biliousness, Constipation, Kidney and Liver Complaints, Impure  
 Blood, Dyspepsia, Headache, Bad Circulation, Obstinate Humors, General and Ner-  
 vous Debility, Female Complaints and all Irregularities of the system caused by  
 bad blood or disordered action of the Stomach, Liver, Kidneys and Bowels.

## Indian Herbs for making Indian Vegetable Cough Syrup.

A rare remedy for Colds, Coughs, Asthma, Chronic Bronchitis, Sore Throat, Weak  
 Lungs, Hoarseness, The Grippe, Tonsillitis, Croup, Whooping Cough, Consumption, Etc.  
 No poisonous or injurious mineral drugs are used in this preparation. Nothing but the choicest,  
 purest and most effective herbs ever discovered.

ORDERS BY MAIL PROMPTLY FILLED.  
 PREPARED BY

# BENTLEY & MCGREGOR,

SOLE PROPRIETORS,  
 Cor. Government and Bay Sts., Victoria, B.C.



