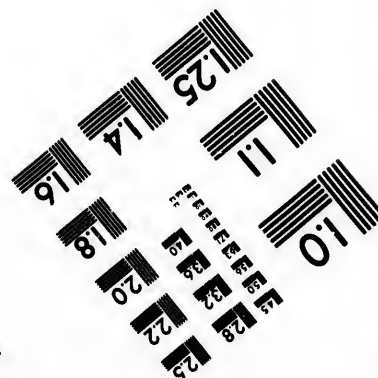
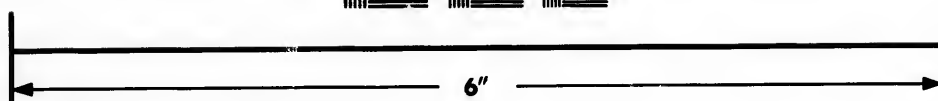
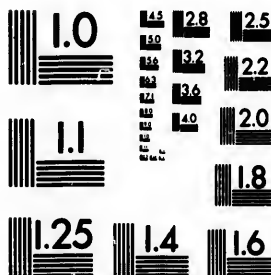


**IMAGE EVALUATION  
TEST TARGET (MT-3)**



**Photographic  
Sciences  
Corporation**

23 WEST MAIN STREET  
WEBSTER, N.Y. 14580  
(716) 872-4503

**CIHM/ICMH  
Microfiche  
Series.**

**CIHM/ICMH  
Collection de  
microfiches.**



**Canadian Institute for Historical Microreproductions. / Institut canadien de microreproductions historiques**

**© 1987**



The copy filmed here has been reproduced thanks to the generosity of:

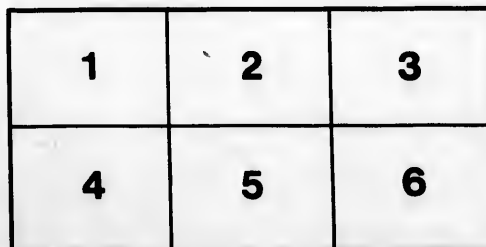
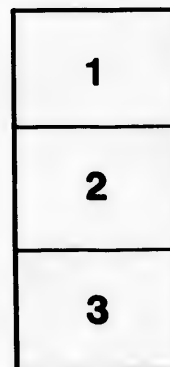
Metropolitan Toronto Library  
Canadian History Department

The images appearing here are the best quality possible considering the condition and legibility of the original copy and in keeping with the filming contract specifications.

Original copies in printed paper covers are filmed beginning with the front cover and ending on the last page with a printed or illustrated impression, or the back cover when appropriate. All other original copies are filmed beginning on the first page with a printed or illustrated impression, and ending on the last page with a printed or illustrated impression.

The last recorded frame on each microfiche shall contain the symbol  $\rightarrow$  (meaning "CONTINUED"), or the symbol  $\nabla$  (meaning "END"), whichever applies.

Maps, plates, charts, etc., may be filmed at different reduction ratios. Those too large to be entirely included in one exposure are filmed beginning in the upper left hand corner, left to right and top to bottom, as many frames as required. The following diagrams illustrate the method:



L'exemplaire filmé fut reproduit grâce à la générosité de:

Metropolitan Toronto Library  
Canadian History Department

Les images suivantes ont été reproduites avec le plus grand soin, compte tenu de la condition et de la netteté de l'exemplaire filmé, et en conformité avec les conditions du contrat de filmage.

Les exemplaires originaux dont la couverture en papier est imprimée sont filmés en commençant par le premier plat et en terminant soit par la dernière page qui comporte une empreinte d'impression ou d'illustration, soit par le second plat, selon le cas. Tous les autres exemplaires originaux sont filmés en commençant par la première page qui comporte une empreinte d'impression ou d'illustration et en terminant par la dernière page qui comporte une telle empreinte.

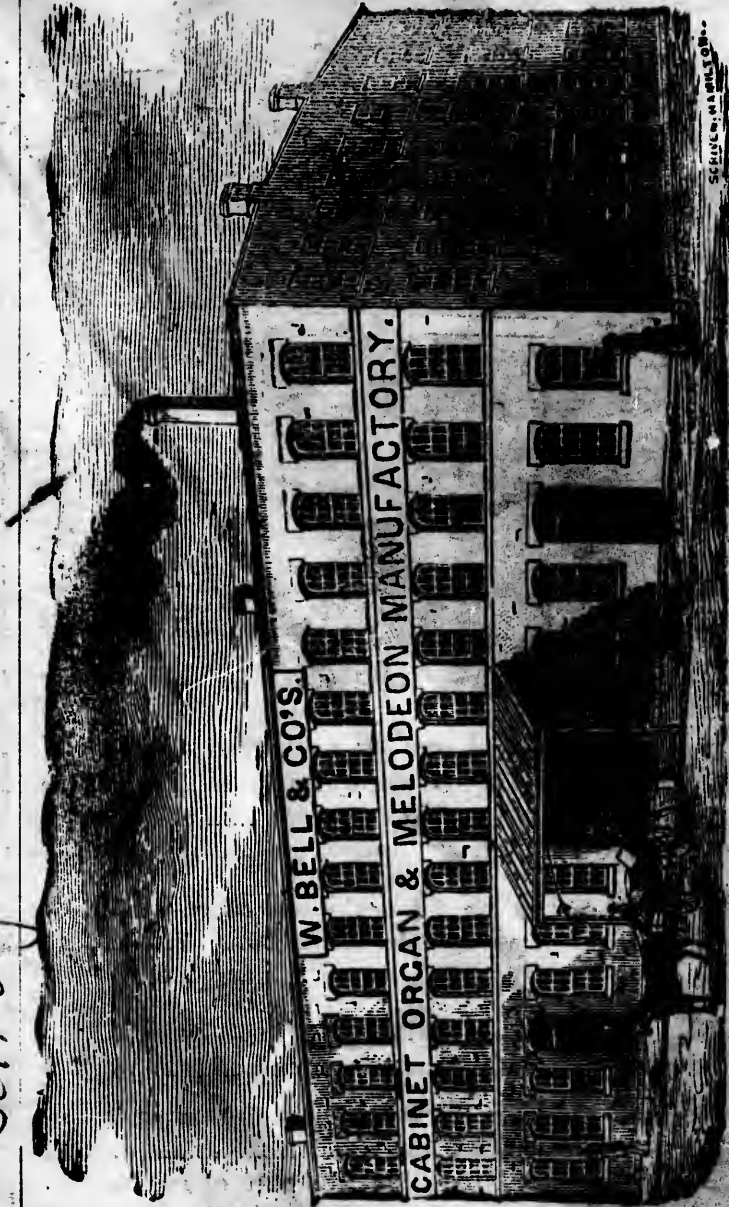
Un des symboles suivants apparaîtra sur la dernière image de chaque microfiche, selon le cas: le symbole  $\rightarrow$  signifie "A SUIVRE", le symbole  $\nabla$  signifie "FIN".

Les cartes, plaques, tableaux, etc., peuvent être filmés à des taux de réduction différents. Lorsque le document est trop grand pour être reproduit en un seul cliché, il est filmé à partir de l'angle supérieur gauche, de gauche à droite, et de haut en bas, en prenant le nombre d'images nécessaire. Les diagrammes suivants illustrent la méthode.

W. BELL & CO.

MAKERS OF PRIZE MEDAL

Organs and Melodeons,



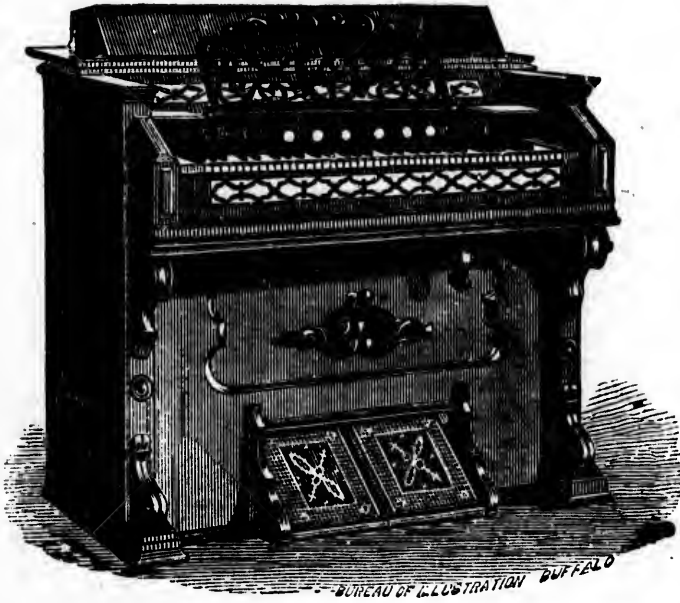
SCHEFFEL & CO. ENGRAVERS

1873. Bell organs.

And Proprietors of the Organette,  
GUELPH, ONT.



- No. 9—5 Octaves, Walnut Case, 5 Stops, Melodia, Diapason, Flute, Viola and Grand Forte - - - - - \$150
- 10.—5 Octaves, Walnut Case, 5 Stops, Melodia, Diapason, Vox Celeste, Viola and Grand Forte - - - - - \$150
- 11.—Same, in Rosewood Case, - - - 175
- 12.—6 Oct., Walnut, same Stops as No 10 180
- 13.—6 Oct., Walnut, same Stops as No. 9 180
- 14.—5 Octaves, Walnut, 2 & 3-5ths sets of reeds, 6 Stops, Melodia, Diapason, Vox Celeste, Viola, Flute & Grand Forte, 175
- 15.—Same, in Rosewood Case - - - 200
- 16.—6 Oct., Walnut, same Stops as No. 14 205
- Sub Bass, with additional stop, \$15 extra.
- Vox Humana, do do 10 do



In High Walnut Cases, with Bevelled Fronts.

No. 40.—5 Octaves, double reed, 5 stops, Melodia, Diapason, Flute, Viola, and Grand Forte - - - - -	\$135
41.—6 Octaves, same stops as No. 40 -	165
42.—5 Octaves, Double Celeste, 5 Stops. Melodia, Diapason, Vox Celeste Viola and Grand Forte - - - - -	135
43.—6 Octaves, same Stops as No. 42 -	165
44.—5 Octaves, 2 & 3-5ths sets reeds, 6 stops, Melodia, Diapason. Vox Celeste, Viola, Flute and Grand Forte - - -	160
45.—6 Octaves, same Stops as No. 44 -	190
Sub-Bass, with additional Stop, - - -	\$15 extra.
Vox Humana, do do - - - - -	10 do





In High Walnut Cases, with Bevelled Fronts.

No. 36.—5 Octaves, single reed, Walnut Case,  
with Knee Swell, no draw stops - - \$ 90

No. 39—5 Oct., 1 & 3-5ths sets reeds, walnut  
case, 5 stops, Diapason, Melodia, Vox  
Celeste, Vox Humana, and Grand Forte, 130

*James papers*

ts.  
\$135  
165  
135  
165  
160  
190  
extra.  
do



# VICTORIOUS EVERYWHERE.



To satisfy those wishing to know where they can procure the best Instruments, we would merely mention the following facts:

At the Provincial Exhibition held in Toronto in 1870, we received the First Prizes for the best Melodeon and best large Cabinet Organ; also, THE

## **ONLY DIPLOMA**

awarded for Reed Instruments DURING THE LAST NINE YEARS.

At the Provincial Exhibition for 1871, we received all the First Prizes, and the

## **Only Medal Ever Awarded**

TO ANY ORGAN MANUFACTURER at any Exhibition IN CANADA.

At the Ontario Provincial Exhibition and the Guelph Central Exhibition for 1872, we AGAIN RECEIVED

## **EVERY FIRST PRIZE.**

At the Central and Provincial Exhibitions for 1873, we received EVERY FIRST PRIZE on Cabinet Organs. At both Exhibitions several American firms, including the Estey and Peloubet & Pelton Organ Companies, were competitors, also all the most prominent Canadian manufacturers.

In making our keys we use No. 1 ivory only, and all organs except single reeds have ivory fronts and bushed mortices, thus making a more elegant key-board and a noiseless action. In all the other details of Tone, Durability and Excellence of Style we shall pay the same attention as heretofore, in order to have our instruments continue the best in the market.

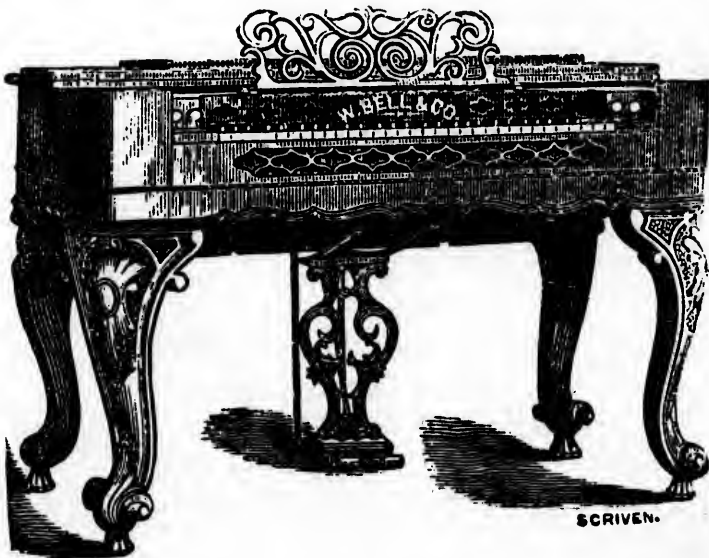
Every Instrument fully Warranted for Five Years. Satisfaction guaranteed.

**W. BELL & CO.**

# MELODEONS.



No. 8—5 Oct. Rosewood, Single Reel, - \$105 00  
 9—6 do do do - 130 00



No. 11—6 Octaves, 2 Sets Reeds, 4 Stops - \$180 00

# THE ORGANETTE.

---

We call the special attention of the public to the fact that we have copyrighted the above name for instruments of our manufacture containing Scribner's Patent Qualifying Tubes.

This wonderful improvement of reed instruments was brought to its present state of perfection, after many years of careful study and experiment, by Prof. G. W. Scribner, from whom we have purchased the sole right for the Dominion of Canada and Great Britain.

By means of these tubes the tone of the reed is rendered smooth and pipe-like, at the same time the volume and power of tone is nearly doubled. For Churches and Halls, where the thin quality of reed organs has been found insufficient, these instruments will be found to equal a pipe organ of double the expense, and for the drawing-room or parlor, the smooth, flute-like quality of tone will make them the instruments long looked for.

Other makers tacitly admit the superiority of our instruments containing this improvement by withdrawing from competition where our Organettes are exhibited.

---

## CAUTION.

As unprincipled makers in the United States are advertising, in Canada, instruments containing Scribner's Qualifying Tubes, we hereby notify all parties that we hold the sole right for the Dominion, and any party importing or purchasing elsewhere will be prosecuted.

**W. BELL & CO.**

Styl

Su  
Oc

Styl

Styl

Styl

Styl

Dia

Jan 1, 1873

# THE ORGANETTE.



- Style D—5 Octaves, double reed, 4 stops, Pipe Treble, Pipe Bass, Flute and Viola ..... \$160  
 Sub bass, with additional stop ..... \$20 extra.  
 Octave coupler, “ “ ..... 25 extra.
- Style E—5 Octaves, 2 & 3-5ths sets of reeds, 5 Stops, Pipe Treble, Pipe Bass, Flute, Viola and Vox Celeste..... \$200
- Style F—Same as Style E, with sub bass, 6 Stops ..... 220
- Style G—Same as Style E, with sub bass and octave coupler, 7 Stops..... 250
- Style H—5 Octaves, 3 & 3-5ths sets of reeds, and Sub Bass, 9 Stops, Pipe Treble, Pipe Bass, Flute, Viola, Vox Celeste, Melodia, Diapason, Sub Bass and Octave Coupler..... 325



