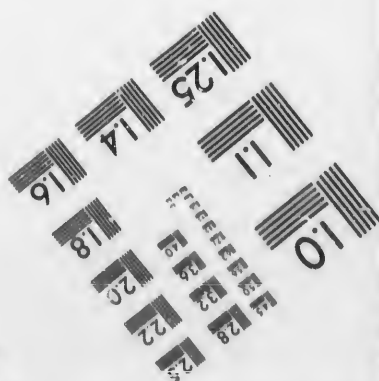
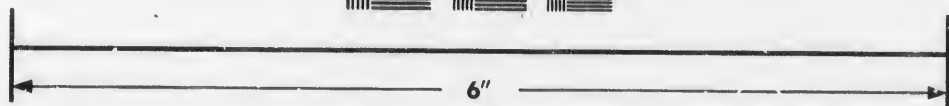
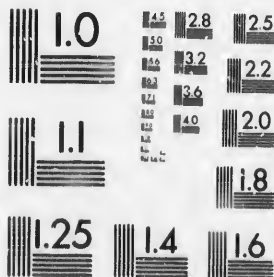


**IMAGE EVALUATION
TEST TARGET (MT-3)**



**Photographic
Sciences
Corporation**

23 WEST MAIN STREET
WEBSTER, N.Y. 14580
(716) 872-4503

**CIHM/ICMH
Microfiche
Series.**

**CIHM/ICMH
Collection de
microfiches.**



Canadian Institute for Historical Microreproductions / Institut canadien de microreproductions historiques

© 1986

Technical and Bibliographic Notes/Notes techniques et bibliographiques

The Institute has attempted to obtain the best original copy available for filming. Features of this copy which may be bibliographically unique, which may alter any of the images in the reproduction, or which may significantly change the usual method of filming, are checked below.

L'Institut a microfilmé le meilleur exemplaire qu'il lui a été possible de se procurer. Les détails de cet exemplaire qui sont peut-être uniques du point de vue bibliographique, qui peuvent modifier une image reproduite, ou qui peuvent exiger une modification dans la méthode normale de filmage sont indiqués ci-dessous.

- | | |
|--|--|
| <input checked="" type="checkbox"/> Coloured covers/
Couverture de couleur | <input type="checkbox"/> Coloured pages/
Pages de couleur |
| <input type="checkbox"/> Covers damaged/
Couverture endommagée | <input type="checkbox"/> Pages damaged/
Pages endommagées |
| <input type="checkbox"/> Covers restored and/or laminated/
Couverture restaurée et/ou pelliculée | <input type="checkbox"/> Pages restored and/or laminated/
Pages restaurées et/ou pelliculées |
| <input type="checkbox"/> Cover title missing/
Le titre de couverture manque | <input checked="" type="checkbox"/> Pages discoloured, stained or foxed/
Pages décolorées, tachetées ou piquées |
| <input type="checkbox"/> Coloured maps/
Cartes géographiques en couleur | <input type="checkbox"/> Pages detached/
Pages détachées |
| <input type="checkbox"/> Coloured ink (i.e. other than blue or black)/
Encre de couleur (i.e. autre que bleue ou noire) | <input checked="" type="checkbox"/> Showthrough/
Transparence |
| <input type="checkbox"/> Coloured plates and/or illustrations/
Planches et/ou illustrations en couleur | <input type="checkbox"/> Quality of print varies/
Qualité inégale de l'impression |
| <input type="checkbox"/> Bound with other material/
Relié avec d'autres documents | <input type="checkbox"/> Includes supplementary material/
Comprend du matériel supplémentaire |
| <input type="checkbox"/> Tight binding may cause shadows or distortion
along interior margin/
La reliure serrée peut causer de l'ombre ou de la
distorsion le long de la marge intérieure | <input type="checkbox"/> Only edition available/
Seule édition disponible |
| <input type="checkbox"/> Blank leaves added during restoration may
appear within the text. Whenever possible, these
have been omitted from filming/
Il se peut que certaines pages blanches ajoutées
lors d'une restauration apparaissent dans le texte,
mais, lorsque cela était possible, ces pages n'ont
pas été filmées. | <input type="checkbox"/> Pages wholly or partially obscured by errata
slips, tissues, etc., have been refilmed to
ensure the best possible image/
Les pages totalement ou partiellement
obscurcies par un feuillet d'errata, une pelure,
etc., ont été filmées à nouveau de façon à
obtenir la meilleure image possible. |
| <input type="checkbox"/> Additional comments:/
Commentaires supplémentaires: | |

This item is filmed at the reduction ratio checked below/
Ce document est filmé au taux de réduction indiqué ci-dessous.

10X	14X	18X	22X	26X	30X
<input type="checkbox"/>	<input type="checkbox"/>	<input checked="" type="checkbox"/>	<input type="checkbox"/>	<input type="checkbox"/>	<input type="checkbox"/>
12X	16X	20X	24X	28X	32X

The copy filmed here has been reproduced thanks to the generosity of:

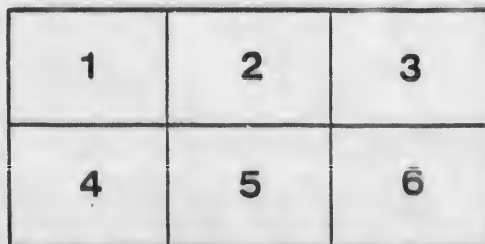
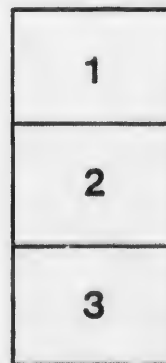
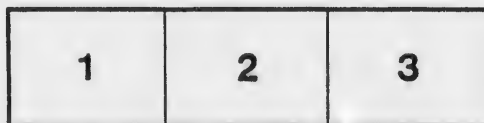
Archives of Ontario
Toronto

The images appearing here are the best quality possible considering the condition and legibility of the original copy and in keeping with the filming contract specifications.

Original copies in printed paper covers are filmed beginning with the front cover and ending on the last page with a printed or illustrated impression, or the back cover when appropriate. All other original copies are filmed beginning on the first page with a printed or illustrated impression, and ending on the last page with a printed or illustrated impression.

The last recorded frame on each microfiche shall contain the symbol \rightarrow (meaning "CONTINUED"), or the symbol ∇ (meaning "END"), whichever applies.

Maps, plates, charts, etc., may be filmed at different reduction ratios. Those too large to be entirely included in one exposure are filmed beginning in the upper left hand corner, left to right and top to bottom, as many frames as required. The following diagrams illustrate the method:



L'exemplaire filmé fut reproduit grâce à la générosité de:

Archives of Ontario
Toronto

Les images suivantes ont été reproduites avec le plus grand soin, compte tenu de la condition et de la netteté de l'exemplaire filmé, et en conformité avec les conditions du contrat de filmage.

Les exemplaires originaux dont la couverture en papier est imprimée sont filmés en commençant par le premier plat et en terminant soit par la dernière page qui comporte une empreinte d'impression ou d'illustration, soit par le second plat, selon le cas. Tous les autres exemplaires originaux sont filmés en commençant par la première page qui comporte une empreinte d'impression ou d'illustration et en terminant par la dernière page qui comporte une telle empreinte.

Un des symboles suivants apparaîtra sur la dernière image de chaque microfiche, selon le cas: le symbole \rightarrow signifie "A SUIVRE", le symbole ∇ signifie "FIN".

Les cartes, planches, tableaux, etc., peuvent être filmés à des taux de réduction différents. Lorsque le document est trop grand pour être reproduit en un seul cliché, il est filmé à partir de l'angle supérieur gauche, de gauche à droite, et de haut en bas, en prenant le nombre d'images nécessaire. Les diagrammes suivants illustrent la méthode.

LIST OF VOTERS

FOR THE

TOWNSHIP

OF

WALSINGHAM,

1877.

WALSINGHAM.

"SPIRIT OF THE AGE" Print. Port Rowan.

POLL

PART

No. on
ROLL

1
2
3
4
5
6

32
34
35
36
37
39
40
41
42
43
50
58
59
60
61
62
63
65
66
67
68
69
70
74
77

POLLING SUB-DISION No. 1—Consisting of Lots 1, 2, 3, 4, 5, 6, 7, 8, 9 and 10, in Concessions B, A, and the Gore. Polling Place—School House, section No. 2, known as Rhorer's School House.

PART 1.—List of persons entitled to vote at both Municipal elections and elections to the Legislative Assembly

No. ON ROLL	NAME	LOT	CON.	DESCRIPTION
1	Anderson, Henry W.	P 10	B	O
2	Abbott, Jacob	P 7 & 8	B	O
3	Abbott, John	P 6	B	O
4	Abbott, Timothy	P 6	B	O
5	Abbott, Peter	P 6	B	O
6	Anderson, James	P 10 & 11	A	O
32	Barret, Romano	P 4	B	O
34	Barrett, Thomas M.	P 7	B	O
35	Barrett, Mark W.	P 3	B	O
36	Bowers, Charles	P 8	B	O
37	Bowers, Smith	P 8	B	O
39	Becker, Isatah	P 1	B	O
40	Becker, Ansloy	P 2	B	O
41	Buchner, Ozias	P 2	A	O
42	Buchner Henry	P 2	A	O
43	Beoman, Isaac W.	P 3	1	O
50	Becker, Henry	P 9	1	O
58	Butcher, David	P 6	1	O
59	Bresseau, Sylvester	P 1	2	O
60	Biddle, Daniel	SEP 4	2	O
61	Biddle, George	SEP 5	2	O
62	Biddle, James	SEP 5	2	T
63	Bingham, Chas. L.	P 7 & 8	1	O
65	Bingham, Gustavis	P 7 & 8	2	O
66	Brown, Willard	E 18	2	O
67	Brown, Peter	N W P 9	1	O
68	Brown, Henry	N P 9	1	O
69	Bouk, Frederick	W P 10	2	O
70	Bouk, Bruce	W P 10	2	T
74	Brown, Emerson	P 8	2	O
77	Barrett, Alexander	W P 3	B	O

28	Countryman, Abram jr.,	P 8	A	OK
29	Countryman, John	P 8	A	T
26	Cadogan, Alfred	WP 1	A	T
33	Crosby, Robert	P 3	2	O
34	Croom, James	SP 5	2	O

182	Davies, John	P 4	2	O
159	Dunn, Philip	WP 3	B	T
160	Davis, Ethal	gore	A & B	O
168	Dawson, Jonathan	S 1	1	O
169	Davis, William W.	NP 3	1	O
178	Dimon, Harvey W.	NP 7 & 8	A	O
221	DeWolf, Arthur	NP 7	2	O

317	Foster, Lewis	P 7	0	O
205	Fick, Peter B.	P 10	B	O
206	Fick, Israel	P 10	B	T
207	Fick, William	P 10	B	O
208	Fick, Thos. A.	P 10	B	O
209	Fick, Peter F X	P 10	B	O
210	Fick, John B	P 10	B	O
211	Foster, Ehas	P 5	B	O
212	Foster, Nelson	P 5 & 6	B	O
213	Foster, Edward Rsq.	P 5 & 6	B	O
214	Franklin, Oliver	SP 1	B	O
215	Foster, Henry	P 6	B	O
216	Foster, Isaac	P 6	A	O
217	Foster, Edward jr.	P 6	A	O
218	Fick, Alonzo	P 9	A	O
219	Fick, Jacob	P 9	A	O
220	Franklin, Benjamin	P 5	1	O
221	Franklin, Clinton	P 5	1	O
222	Franklin, William	EP 5	1	O
226	Franklin, Tarquin	P 5	A	O
227	Fick, Gilbert	WP 3	A	O
228	Fick, Peter H	P 3	A	O
229	Fick, Isaac F	WP 2	1	O
230	Fick, Clinton	P 1	1	O

		6		
408	Overbaugh, Isaac	P 6	A	O
409	Overbaugh, William	P 4	1	O
410	Overbaugh, Gideon	P 4	1	O
411	Overbaugh, Charles	P 4	1	T
412	Overbaugh, David	P 4	1	T
413	Oaks, Lewis	4	A	O
414	Overbaugh, Joel	SP 1	2	O
405	Osborne, David	SP 7	B	O

419	Procunier, Peter	P 10	B	T
420	Procunier, Henry	5	B	T
421	Procunier, Edward	WP 8	B	O
422	Procunier, Jacob W.	WP 8	B	O
428	Pitman, Samuel	SP 7	1	O
429	Pool, Nathaniel	SP 6	2	O
431	Parker, William	P 1	2	O
432	Parker, Sidney	P 1	2	O
33	Procunier, McKenzie	P 4	B	O
45	Pitman, Henry	3	1	T

468	Rockafello, Allan	P 10	A	O
472	Rohrer, Daniell	P 4	1	O
473	Rockafello, Cornelius	P 3	1	O
474	Raymond, Frank	P 1	1	O
475	Rockafello, William D.	3	1	O
476	Raymond, Thomas	gore		O
321	Rightman, James	7	2	O

493	Spencer, Lot	P 10	B	O
494	Spencer, Charles B.	P 10	B	O
495	Spencer, Edward	P 10	B	O
503	Smith Thomas jr.	P 2	1	O
504	Swarts, Henry	P 6	2	O
505	Smith, George	10	2	T
368	Smith, Edward	6	2	O

548

565

618

PART

NO. ON ROLL.

497
496

546

586

PART

O
T
O
O
O

549 Train, Adam C. ...
 1; also Long Point ...
 15, 18, 19, 20 and 21 in Congress

565 Underhill, James ...

Roll	Name	Lot	Con	Description
618	Yocum, Clark	1	A	
Total in Divison 127				

PART 2.—List of persons entitled to vote at Municipal Elections only.

No. ON ROLL.	NAME	LOT	CON	DESCRIPTION
497	Skuce, Frederick	P 2	B	
496	Strange, Edwin	P 2	B	
546	Tolan, John	P 10	B	
586	Willis, Henry	gore		

PART 3.—List of persons entitled to vote at Elections to the Legislative Assembly only. None.

O	B	119		
T	1	P 12		
O	1	P 18		
O	1	P 18		
O	1	P 18		

POLLING SUB-DIVISION No. 2—Consisting of Lots No. 12, 13, 14, 15, 16 and 17, in Concessions B., A. and 1; also Long Point. Polling Place—Port Rowan

PART 1.—List of persons entitled to vote at both Municipal elections and elections to the Legislative Assembly

No. ON ROLL	NAME	LOT	C. N.	DESCRIPTION
13	Anderson, Henry W.	P 13	A	T
14	Anderson, John	P 16	A	O
15	Allan, Alexander R.	P 17	A	O
16	Allan, Henry W.	P 16	A	T
17	Allan, James	P 16	A	T
18	Allan, Robert B.	P 16	A	T
73	Anderson, William	P 13	A	O
30	Bramwart, Owen	P 12	B	O
46	Eackhouse, Edward	P 14	A	C
48	Becker, Solomon	P 12	1	O
50	Becker, Henry	P 16	A	O
72	Brown, Stephen D.	P 13	A	T
74	Barrows, Arnold	P 12	A	O
	Barrett, Alexander	See Sub-Div. No 1		
80	Bradt, James	P 16	A	T
81	Baker, John	P 17	A	O
82	Becker, Isaac	P 17	A	O
83	Barrett, Ozius	P 17	A	O
84	Barrett, Hugh M.	P 16	1	O
85	Backhouse, Peter	P 17	1	O
86	Biddle, Cornelius	P 17	ax	O
86	Brown, Morris	P 17	ax	T
107	Backhouse, John H.	P 17	ax	O
203	Brownlow, William	P 17	ax	O
125	Cantryman, Abram	P 11	B	O
140	Cliff, Peter	P 13	1	T
138	Collett, John	P 16	A	O
139	Cowan, Thomas	P 16	A	O
140	Cowan, Robert	P 16	A	O

f Lot No.,
ns B., A. and
-Port Rowan

Municipal elec
sembly

141	Cartwright, Warren	P 16	A	O
142	Curtis, Thomas	P 17	A	O
144	Creeker, Henry	P 17	A	O
143	Caroy, G. M. W.	P 17	A	O

DESCRIPTION

T
O
O
T
T
O

188	DeWitt, Edgar J.	P 11	B	O
161	Duncan, Robert	P 12	A	O
162	Dedrick, Samuel	P 13	B	O
163	Dedrick, Charles	14	A	O
164	Dedrick, John	15	A	O
165	Dedrick, Austin O.	14	A	O
170	Dedrick, Thomas H.	15	1	O
171	Dedrick, John W.	P 15	A	O
173	Dedrick, Lucas	P 15	A	O
174	Dedrick, Abraham	P 16	A	O
175	Donkin, Robert	P 16	A	O
176	Dedrick, William W.	P 15	A	O

O
C
O
O
O

	Dimor, Harvey W.	See Sub-D v. N. 1		
179	Dench, Ephraim	P 16	A	O
	Davis, John	See Sub-Div. No. 1		
183	Dench, John	P 17	A	O
184	Dedrick, James I. <i>albert</i>	P 17	A	O
186	Dedrick, James Amelia	P 17	A	O
187	Dedrick, Thomas B.	P 17	A	O
180	Douse, James	P 17	A	O
180	Douse, Richard	P 17	A	O

T
O
O
O
O
O
T
O
O

Dedrick Luke P 15 a *Farmers son*
Dedrick George W " 15 a *Farmers son*

197	Ellis, Henry	P 14	A	O
198	Ellis, Joseph	P 16	A	O
199	Edgecomb, William	P 16	A	O
200	Ellis, William	P 16	A	O
201	Ellis, Daniel J.	P 16	A	O
202	Ellis, Aaron	P 16	A	O
203	Elms, Fredrick	P 17	A	T

O
T
O
O
O

331	Fairchild, Charles	P 17	A	O
232	Franklin, Harvey L.	P 14	1	O
233	Franklin, William	P 14	1	O

234 Fits Morris, Morris
 235 Franklin, William B.
 236 Fry, Thomas
 237 Franklin, Henry
 239 Fowler, William
 250 Franklin, Nelson
 223 Fry, James

P 16 ± a O
 P 16 + a O
 P 17 - a O
 P 17 1 O
 P 17 1 O
 P 14 1 O
 P 12 1 O

258 Giffard, Benjamin M.
 259 Gordon, John
 260 Glover, John

P 17 A O
 P 17 A O
 P 17 A O

272 Hutchinson, Jan. 9
 263 Hazen, Ahima
 264 Hazen, Robert S.
 281 Helmer, Andrew
 282 Hutchinson, Alex. M.
 285 Husband, Herbert
 286 Holt, Samuel N.
 287 Hudson, John
 295 Hallum, George

P 16 A O
 P 12 A O
 P 12 A O
 Long Point A O
 P 11 A O
 P 16 A O
 P 16 A O
 P 17 A O
 P 16 A O

305 Jackson, William

Long Point T

O 4 4
 O 4 4
 O Killmaster, Benjamin
 O 4 4
 O 4 4
 O 4 4
 O 4 4
 T 4 4

See Sub Div. No. 1
 101
 102
 103
 104

336 Louch, James
 316 Leary, William
 330 Laidman, Isaac
 333 Liger, John
 334 Lea, James

P 16 A O
 Long Point T
 P 17 A T
 P 16 A T
 P 17 A T

342
 347
 369
 370
 371
 372
 373
 374
 93

391
 392
 393

416
 417

419
 420
 433
 434
 435
 436
 439
 440
 441

31
 466
 467

342	McKenzie, John	A	11	9	Robert A. ...	774
347	McMaster, Reynolds	A	17	9	Lang Point	801
369	Mabee, Simon P.	A	17	9	P 17	801
370	Meadow, Wilkinson	A	16	9	P 16	801
371	McKenzie Malegim	A	17	9	P 17	801
372	Mabee, Hugh A.	A	17	9	P 17	801
373	McDonald, A. K.	A	17	9	P 17	801
172	Milner, Stephen	A	15	9	P 15	801
934	McLennan John K.	A	16	9	P 16	801

Mabee Peter 16 a 0

391	Nicholson, John	A	14	9	P 14	801
392	Nicholson, Jabez	A	14	9	P 14	801
395	Newkirk, James C.	A	17	9	P 17	801
0		A	16	9		801
0		A	17	9		801
0		A	17	9		801
0		A	17	9		801
415	Oaks, Joseph	A	16	9	P 16	801
417	Overbaugh, Phillip	A	12	9	P 12	801
0		A	17	9		801
0		A	17	9		801
0		A	17	9		801
0		A	17	9		801
418	Ponting, Mark	A	17	9	P 17	801
425	Pickard, William H.	A	12	9	P 12	801
433	Pugsly, William	A	16	9	P 16	801
434	Pattont, George	A	16	9	P 16	801
435	Perry, Ira	A	17	9	P 17	801
436	Pank, Christopher	A	17	9	P 17	801
439	Peach, Frank	A	17	9	P 17	801
440	Pitman, Francois	A	17	9	P 17	801
44	Pitman, Job	A	17	9	P 17	801
T		A	16	9		801
T		A	17	9		801

31	Procurier, Peter	A	12	9	P 12	801
466	Rockafello, Rolph	A	11	9	P 11	801
467	Rockafello, Walter	A	1	9	P 1	801

477	Rohrer, Alexander	P 11	A	
478	Ross, William	P 16	A	
479	Richardson, Richard jr.	P 16	A	
480	Robbins, James	16	A	
481	Ryan James	16	A	
482	Ryan, Nicholas	16	A	
483	Reeves, Phineas	P 17	A	
484	Rose, Charles	17	A	
485	Richardson, R. M.P.P.,	17	A	
486	Rohrer, David	P 15	1	

O
O
O
O
O
O
O
O
O
O
O

506	Saxton, Isaac	P 16	A	
507	Smith, William	P 17	A	
508	Stearns, John A.	P 16	A	
509	Stevenson, Richard S.	P 16	A	
510	Scott, Anthony	P 16	A	
521	Stevenson, William H.	P 16	A	
514	Saxton, John H.	P 16	A	
515	Smith, John S.	P 16	A	
516	Smith, Thomas M.	P 14	A	
517	Stewart, George	P 16	A	
518	Spain, Frederick	P 17	A	
520	Stearns, John E.	P 17	A	
521	Stearns, Austin	P 17	A	
525	Stow, Scayler	P 17	A	
523	Smith, Thomas, sen.	P 17	A	
524	Smith, Thomas H.	P 17	A	
558	Smith, William	P 16	A	

O
C
C
O
T
O
O
O
O
O
O
T
O
O
O
T
O
O
O
O
T

547	Trickett, Thomas	P 12	A	
575	Thompson, Frederick	P 11	A	
555	Taylor, Jesse	P 16	A	
556	Tabor, Daniel	P 16	A	
557	Thomas, Isaac	P 17	A	

O
T
T
T
T

568	Vatcher, Stephen	P 17	A	T
586	Wright, David	P 16	A	T
571	White, Moses	P 12	A	O

T
T
O

147	Lovel, Sylvanus	P 21	1	O
348	McBurney, William	P 24	1	O
349	McCall, Daniel A.	P 24	1	O
374	McDonald, John	P 24	1	O
375	McDonald, Warren	P 24	1	T
376	McKinnon, Lachlin	P 24	2	O
377	Mulkins, Amos	P 24	1	T
378	McCall, James W.	P 24	1	O
379	McPherson, Eli	P 23	2	T
380	McPherson, Samuel	P 23	2	O
386	Myers, William H.	P 22	3	O
390	Moore, John J.	P 23	2	O

525
527
528
529
530
531
532
443

396	Newman, George W.	P 22	3	O
397	Newman, P. N.	P 22	3	T
398	Newman, Matthew H.	P 22	3	T
399	Newman, James W.	P 24	1	O
401	Newkirk, Nathaniel	P 22	2	O
400	Newkirk, Moses	P 22	2	O

559
576
581
591
592
593
595
596
597
599
600

438	Peach, James	P 18	1	O
442	Priddle, Stephen	P 14	2	O
444	Pitman, George	P 20	1	O
445	Pro. unior, David	P 24	1	O
446	Procurier, David jr.	P 24	1	T
447	Pretty, George K.	P 24	1	T
452	Price, James E.	P 24	3	O
453	Price, Stephen sr.	P 24	3	O
454	Price, James	P 24	3	O
455	Price, Aaron W.	P 24	3	O
464	Price, Peter	P 24	2	O
463	Price, William G.	P 24	2	O
456	Price, Stephen jr.	P 24	3	O

601
602
603
611
6.5
PA

Price Henry - 24 3 0
Price George Wallace - 24 3 James son

487	Richardson Richard	See Sub Div	2	818
488	Reynolds, William	P 14	2	818
488	Reeves, Avlah	P 24	1	818

No. o
Rol
192
PA

	Smith, William	Sec Sub DW No. 2		
	Stearns, John A.	Sec Sub DW No. 2		
	Smith, Thomas	Sec Sub DW No. 2		
	Smith, Thomas H.	Sec Sub DW No. 2		
525	Scarth Avery H.	P 18	1	0
527	Smith, Edgar	P 19	1	0
528	Smith, George	P 19	1	0
529	Shoemaker, Peter	P 21	1	0
530	Shoemaker, Daniel	P 21	1	0
531	Smith, Benjamin	P 20	1	0
532	Smith, Jan es	P 19	2	0
443	Solway, George	P 14	2	1
	<i>Smith Eugene</i>	" 20	1	<i>Farmers son</i>

559 Thompson, Alva P 18 2 T

576	White, Joseph	P 11	2	0
581	Wheeler, John	P 12	2	0
591	W. Phems, Titus Esq.	P 18	1	0
592	Williams, Titus jr.	P 13	1	0
593	Woodward, Demetrius	P 20	1	0
595	Williams, Isaac	P 13	1	0
596	Williams, Charles	P 18	1	0
597	Woodward, Paul	P 23	1	0
599	Willard, Joseph	P 24	2	T
600	Woodward, Hallum	P 24	2	O
601	White, Richard	P 24	1	O
602	Watts, Uriah	P 22	2	O
603	Willard, James R.	P 22	1	O
611	Watts, Benjamin	P 22	3	O

6.5 Yonson, George P 24 1 O

Total in Division 115

PART 2.—List of persons entitled to vote at Municipal Elections only.

No. ON ROLL	NAME	LOT	CON.	DESCRIPTION
192	Davis, Isaac	P 24	1	T

PART 3.—List of persons entitled to vote at Elections to the Legislative Assembly only. None.

POLLING SUB-DIVISION No. 4—Consisting of Lots No. 1, 2, 3, 4, 5, 6, 7, and 8, in Concessions 3, 4, 5, 6, 7, and 8. Polling Place—Cox's Shop.

PART 1.—List of persons entitled to vote at both Municipal elections and elections to the Legislative Assembly.

NO. ON ROLL	NAME	LOT	CON.	DESCRIPTION
7	Ashford, John	P 1	3	O
8	Ashford, John jr.	P 2	3	O
9	Anger, Peter	P 6	4	O
22	Ashford, Charles	P 2	3	O
26	Andrews, George	P 1	6	O
620	Abbott, Daniel	P 3	8	O
51	Berry, James	P 5	4	O
52	Benedict, John	P 1	4	O
53	Blumenstein, Jacob	P 1	4	O
54	Blumenstein, John	P 1	3	O
55	Blumenstein, Martin	P 2	3	O
71	Butcher, William	P 3	3	O
	Burrows, Arnold	See Sub-Div. N. 2		O
647	Bennett, James W.	P 8	8	O
	Countryman, John	See Sub Div. N. 1		
	Countryman, Abram jr.	See Sub-Div. N. 1		
135	Cox, George	P 7	5	O
136	Cox, Edward	P 7	6	O
363	Calvin, Mr.	P 7	3	O
705	Chapman, Edward	P 1	8	O
706	Cridland, Richard	P 5	8	T
707	Cridland, Robert	P 5	8	O
708	CClark, Charles	P 5	7	T
409	Cridland, Mark	P 5	8	O
710	Cox, Rubin	P 1	8	O
712	Cotner, William	P 3	8	O
755	Drake, James D.	P 2	7	O
756	Drake, George	P 2	7	T

311 Jones, Andrew
308 Johnson, Henry

20

P 8 6
P 8 5

0

916 Leforge, William
326 Louks, Charles,
336 Latham, Chauncey W.

P 6 7
P 8 3
P 1 6

T
O
O

350 Moffatt, John
354 Millen, James
362 Marlatt, John
248 Marshall, Thomas

P 1 6
P 1 4
P 7 3
P 5 5

O
O
T
O

398 Near, William
403 Nichol, George
404 Nichol, James
1000 Newell, Hugh

P 8 5
P 2 6
P 2 6
P 6 8

T
O
O
O

Oaks, Lewis
Overbaugh, Joel

See Sub-Div. No. 1
 do do do

430 Protty, George

P 6 3

O

1028 Rohrer, John W.
469 Robinson, Alfred

P 4 8
P 3 3

O

O

0168

308

POLLING SUB-DIVISION No. 5—Consisting of Lots No. 10, 11, 12, 13, 14, 15 and 16, in Concessions 3, 4, 6, 7 and 8. Polling Place—Town Hall, Walsingham Centre.

PART 1.—List of persons entitled to vote at both Municipal elections and elections to the Legislative Assembly

No. ON ROLL	NAME	LOT	CON.	DESCRIPTI
10	Anger, George N.	P 10	3	O
12	Anguish, Jacob	F 9	3	O
27	Anger, William F.	P 13	5	O
29	Andrews, Richard	P 11	5	O
28	Awde, George	P 10	6	O
621	Argyle, George	P 13	5	O
	Anderson, William	Sec. Sub-Div. No. 2		
648	Bouk, John W.	P 9	8	O
56	Bishoprick, John	P 11	5	O
57	Bennett, Philo	P 12	5	O
	Backhouse, John H.	Sec. Sub-Div. No. 2		
113	Byerly, Thomas	P 15	5	O
118	Belback, James	P 13	3	O
120	Bockett, Samuel	P 9	6	O
121	Blanchard, George	P 16	5	O
122	Blanchard, William	P 13	5	O
123	Brandow, Jacob C.	P 14	6	T
124	Bennett, Andrew M.	P 10	4	O
167	Bennett, Henry	P 11	4	T
	Brown, Stephen D.	Sec. Sub-Div. No. 2		
703	Brandow, William R.	P 15	7	T
704	Cook, William R.	P 14	7	T
714	Cook, Walter	P 13	8	T
713	Cook, William sr.	P 12	7	O
719	Craig, James	P 12	8	O
	Contryman, Abram	Sec. Sub-Div. No. 2		
131	Clubine, Edward	P 13	5	O
133	Cronk, Dennis	P 13	5	O
	Chamberlin, Frederick	Sec. Sub-Div. No. 2		

270	Hawley, Nathaniel	P 13	5	O
	Harris, Moses	See Sub-Div. No. 3		
	Hutchinson, James	See Sub-Div. No. 1		
274	Hepburn, Fredrick W.	P 9	5	O
275	Hazen, Charles	P 10	5	O
276	Hazen, Eugene	P 10	5	T
280	Haun, Isaac	P 13	3	T
	Hallam, George	See Sub-Div. No. 2		
299	Huson, William	P 10	6	O
300	Hailer, Anthony	P 12	5	T
301	Hutchinson, John	P 13	6	O
302	Holst, Harold	P 10	5	O
304	Hazen, John W.	P 10	5	O
858	Hepburn, William M.	P 9	8	Q
857	Hepburn Milson	P 9	8	Q
886	Hanna, Thomas F.	P 11	8	Q
892	Hill, Joseph	P 13	8	O
381	Hutchinson, James J.	P 12	4	

895	Jemerson, Whit-on	P 10	7	Q
310	Jenerson, Hugh	P 16	5	Q

312	Kincaid, Robert	P 12	5	O
907	Kerrigan, William	P 14	8	O
908	Kern, Fredrick	P 11	7	O

	Liger, John	See Sub-Div. No. 2		
325	Louks, Andrew	P 9	3	O
327	Light, Felix	P 10	4	O
328	Louks, Jacob	P 10	3	O
327	Lane, Joseph	P 9	6	O
338	Lelond, Samuel	P 9	6	O
339	Lawson, Charles	P 13	5	O

345	Moulton, William	P 11	3	T
346	Moulton, Asa	P 11	3	O

351
455
361
704
382
383
389
982
983
984
986
987
998
995
996
997
225

402

426
427
448
449
450
451
458
462
465

538
102
105
470

351	Moulton, Andrew	P 12	6	T
455	Morgan, William	P 13	5	O
361	McKay, James	P 9	4	O 25
704	Mason, John	P 14	7	O 16
382	Miller, George	P 12	4	O 16
383	Moore, Henry A.	P 12	3	O 2
389	McInosh, Alexander	P 11	6	O
982	McKillen, Benjamin	P 13 & 11	8	O
983	McKillen, Samuel	P 13 & 11	8	T
984	McKillen, James	P 13 & 11	8	T
986	Murphy, Thomas	P 16	8	O
987	Murphy, Thomas Jr.	P 16	8	O
998	Murphy, James	P 15	8	O
995	Marshall, Thomas	P 16	8	T
996	Marshall, Edward Jr.	P 16	8	P 16
997	Marshall, Edmund	P 16	8	O
225	Mittler, Joseph	P 13	5	T
	Mottot, Edwin	See Sub-Div. No. 1		
	Mabee, Hugh A.	See Sub-Div. No. 2		

402	Near, Henry	P 13	3	T
-----	-------------	------	---	---

426	Peronto, Michael	P 12	5	O
427	Phelan, John	P 13	5	T
448	Proper, William H.	P 14	3	T 100
449	Pretty, Thomas	P 16	3	O 100
450	Pretty, Charles W.	P 16	3	O 100
451	Pretty, Henry	P 13	4	O 100
458	Proper, John	P 14	6	T 100
462	Procunier, Elijia M.	P 13	5	O 100
465	Patterson, Anderson	P 13	6	O 111

538	Roszell, Jacob	P 12	5	T
1027	Rohrer, Jeremiah	P 10	7	O
1054	Rohrer, Henry	P 16	7	O
470	Russell, Gilbert	P 13	5	O
	Reynolds, William	See Sub-Div. No. 3		

	Saxton, Isaac	See Sub-Div. No. 2		
	Smith Benjamin	See Sub-Div. No. 3		
537	Smith, Henry	P 12	5	O
544	Smith, Albert	P 13	6	O
545	Smith, Lewis	P 10	4	O
257	Smith, Obed M.	P 9	4	O
1110	Thompson, John	P 14	8	O
1121	Townsend, John	P 13	5	O
	Trickett, Thomas	See Sub-Div. No. 1		
548	Terry, Henry W.	P 12	5	O
551	Tolman, Matthew	P 9	5	O
303	Terrett, James	P 10	5	O
566	Underhill, John	P 15	5	O
570	Vanderburg, Henry	P 14	4	O
	Woodward, William	See Sub-Div. No. 3		
	Wood, William	do do do		
594	Whitsall, Eli	P 12	5	O
604	Wingrove, George	P 16	6	O
605	Wingrove, Wallace	P 16	6	T
606	Wingrove, Whitfield	P 16	7	T
607	Wingrove, Henry C.	P 16	7	T
912	Winkworth, John	P 14	4	O
1178	Werely, James	P 12	8	T
1175	Werely, William	P 12	8	T
1176	Wheeler, Henry	P 15	7	O
1127	Wheeler, Richard	P 9	8	O
301	Wilson, William	P 13	6	O
617	Yocum, Jacob L.	P 16	5	O
616	Yocum, G. D.	P 16	5	T
Total in Division 154				

PART 2.—List of persons entitled to vote at Municipal Elections only.

No. on Roll	NAME			DESCRIPTION
-------------	------	--	--	-------------

105	Brandow, Jacob	P 18	3	O
119	Bunning, James	P 13	4	O

196	Dickinson, John	P 10	4	T
195	Deane, Charles	P 12	6	T

492	Ribble, William H.	P 13	5	O
-----	--------------------	------	---	---

562	Terry, Isaac	P 10	4	O
-----	--------------	------	---	---

195	Sherman, George	P 13	6	O
-----	-----------------	------	---	---

PART 3.—List of persons entitled to vote at Elections to the Legislative Assembly only. None.

2
3
O
C
C
O
1
O
C
C
O
O
3
O
O
T
T
O
T
T
O
O
O
O
T
T

POLLING SUB-DIVISION No. 6—Consisting of Lots No. 18, 19, 20, 21, 22, 23 and 24, in Concessions 4, 6, 7, 8 and 9. Polling Place—the School House east quarter townline, Con. 5, (Morrien's School House).

PART I.—List of persons entitled to vote at both Municipal elections and elections to the Legislative Assembly

No. ON ROLL	NAME	LOT	CON.	DESCRIP.
24	Anger, Henry	P 17	5	0
641	Arn, Cornelius	P 24	8	00
642	Arn, William	P 24	8	00
643	Allen, Jeremiah	P 24	7	0
644	Alexander, George	P 17	8	0
645	Auford, John	P 19	7	0
652	Burk, John	P 22	7	0
699	Bridgeman, Thomas	P 20	9	00
701	Briton, Smith	P 18	9	00
702	Brandow, Austin	P 17	7	00
	Brown, Peter	See Sub-Div. No. 1		00
	Brown, Isaac	do do do	3	
	Brown, Albert	do do do		
	Brown, Isaiah	do do do		
	Brown, George	do do do		
	Brandow, Henry Jr.	do do do		
	Brandow, Henry	do do do		
	Brandow, Luke	do do do		
	Becker, James M.	do do do		
	Boyington, George	do do do		
114	Burger, Aaron	P 17	5	0
116	Bennett, Aaron	P 24	6	0
116	Bell, Isaac	P 24	4	0
117	Bell, George	P 24	4	0
153	Cope, Fredrick	See Sub Div. No. 3		
	Cope, John H.	See Sub-Div. N. 3		
	Chambers, James	P 18	6	0

ing of Lots No.
 Concessions' 4,
 e-School- Ho
 Morrien's Sch

ootle Municipal
 Assembly

DESCRIPT

O
 300
 297
 O
 O
 O

O
 O
 O
 O

1
 3

do
 do
 do
 do
 do
 do

O
 O
 T
 O

O
 O

02

29

749	Cannahan, John	P 18	7	010
750	Chambers, John	P 20	7	880
751	Chambers, Basil	P 20	7	100
	Cruise, William	See Sub-Div. No. 5		
752	Cruise, George	P 17	7	0

	Dimon, Harvey W.	See Sub-Div. No. 11		200
193	Downs, David	P 21	4	T
385	Dekenson, William	P 24	4	T

797	Ecker, Abrams	P 14	9	O
795	Evans, Edgar	P 22	8	O
976	Evans, John	P 22	8	O
798	Eastman, William	P 23	9	T
491	Everett, John	P 24	8	O

Wash. Park
~~*Wash. Park*~~

243	Fish, George	P 20	4	O
	Ferris, George	See Sub-Div. No. 3		

799	Gordon, William	P 23	9	O
848	Golden, George	P 22	7	O
849	Graves, John J.	P 20	8	O
850	Greig, James	P 18	7	O

851	Hagan, William	P 17	7	O
852	Hutchinson, Alexander	P 19	7	O
853	Hamilton, John	P 23	9	O
854	Halliday, David	P 20	8	O

872	Hannah, Thomas	P 17	8	O
888	Hunter, John	P 19	9	O
891	Hunter, John jr.	P 22	9	O

610	Johnson, Jeremiah	P 18	5	O
904	Johnson, Levi	P 22	7	T
905	Johnson, Ferris	P 20	8	T

911	Knowles, William	P 17 & 18	9	O
913	Knowles, Robert	P 18 & 17	9	T
912	Knowles, Thomas	P 17 & 18	9	T
915	Kriess, Peter	P 18	8	O

340	Laymon, Thomas	P 17	6	O
-----	----------------	------	---	---

	McCall, Daniel A.	See Sub-Div. No. 3		
	McBurney, William	do do do		
	McPherson, Eli	do do do		
	McPherson, Samuel	do do do		
	Myers, William H.	do do do		
387	Myers, John	P 21	6	O
949	Mayo, George	P 23	8	O
977	Marshall, Joseph	P 23	9	T
985	Murphy, John	P 17	9	T
889	McPherson, Absalom	P 19	8	T
990	McPherson, John S.	P 19	8	T
991	Murphy, Timothy	P 19	9	T
992	McBurney, James	P 24	9	T
993	Murphy, Timothy	P 24	9	T
994	Mayo, Edward	P 24	7	T
998	McEwen, Walter	P 21	8	T

978 Murphy, Patrick
 998 McEwen, John
 976 Murphy, John

P 24 9, 11, 17 800
 P 21 W, 8 mod T 800
 P 23 9, 11, 17 800
 1301

1002 North, Robert

P 23 8 0

1228 Perrett, Thoma

P 23 8 0

Price, Stephen jr.

Sea Sun-Div. No. 3

459 Ponting, George

P 18 4 0

461 Ponting, Benjamin

P 19 4 0

460 Ponting, John

P 19 4 0

489 Richards, George E.

P 24 6 800

490 Ryckman, Harmon

P 24 5 800

1052 Rodgers, James

P 24 7 0

1053 Reid, John

P 21 7 0

1055 Rinker, Henry

P 18 9 0

539 Shoup, John

P 21 4 0

1059 Somerville, James

P 19 7 0

1098 Shirk, James,

P 22 9 0

1100 Shirk, Uriah

P 21 9 0

1099 Shirk, Uriah jr.

P 21 9 0

1101 Siparel, Edward W.

P 20 9 0

1104 Shoup, Christian

P 21 9 0

1105 Saunders, John

P 21 8 0

1106 Sheltus, William

P 22 8 0

1107 Seburn, John

P 22 8 0

534 Simons, Edward

P 18 5 0

535 Springsted, William

P 19 6 0

536 Springsted, Ranson

P 19 6 0

541 Smith, Henry

P 18 4 0

542 Schram, Andrew

P 18 4 0

543 Schram, George

P 17 4 0

O
O
T

O
T
T
O

O

O
O
T
T
O
T
T
T
T
T
T
T
O
T
T
T
T
T

		32		
560	Tett, Peter	P 17	5	
561	Thompson, William	P 18	4	
563	Tester, Henry	P 18	6	
1120	Tisdale, Ephraim	P 17	9	
	Townsend, John	See Sub-Div. No. 5		

596	Van Wagoner, Lewis	P 22	4	O
	Wingrove, Whitfield,	See Sub-Div. No. 5		
	Wingrove, Henry C.	do	do	do
608	Wingrove, James	P 17	6	O
609	Wingrove, Wilberforce	P 18	6	O
	Watt, Benjamin	See Sub-Div. No. 3		
614	Welch, Benjamin	P 19	5	O
1149	Whitehead, Peter	P 23	8	O
1175	Wilkins, William	P 24	7	O
Total in Division 154				

PART 2.—List of persons entitled to vote at Municipal Election only.

No. ON ROLL	NAME	LOT	CON.	DESCRIPTION
540	Smith, Daniel	P 18	4	O
567	Unger, Henry	P 24	6	O

PART 3.—List of persons entitled to vote at Elections to the Legislative Assembly only. None.

POLLING SUB-DIVISION No. 7—Consisting of Lots No. 1, 2, 3, 4, 5, 6, 7 and 8, in Concessions 9, 10, 11, 12, 13 and 14. Polling Place—Winter's School House.

PART 1.—List of persons entitled to vote at both Municipal elections and elections to the Legislative Assembly

No. ON ROLL	NAME	LOT	CON.	DESCRIPTION
	Anger, William F.	Sec Sub-Div. No. 5		
	Argyle, George	do do do		
630	Atkinson, Charles	P 2	12	O
631	Anseomb, William	P 6	11	O
632	Alward, John	P 1	12	O
635	Alward, James	P 6	12	O
	<i>Atkinson Robert</i>	<i>" 2</i>	<i>12</i>	<i>Samuelson</i>
649	Bronson, George	P 6	10	O
650	Burger, Charles	P 5	10	O
662	Barnes, William	P 3	12	O
663	Blundel, William	P 3	12	O
664	Boncor, James	P 6	12	O
665	Brackenberry, Samuel	P 8	12	O
671	Boncor, Thomas	P 6	12	O
675	Boughner, Walker	P 7	14	O
676	Boyd, William	P 4	13	O
677	Bowman, Hugh R.	P 8	14	T
678	Bowman, Amos	P 8	14	O
715	Cridland, Edwin	P 4	9	O
720	Cuncer, Richard	P 7	12	O
722	Corman, Robert	P 6	11	O
723	Curtis, Albert	P 2	14	O
724	Chadwick, William H.	P 1	14	O
751	Davis, John H.	P 7	9	O
	Drake, David W.	Sec Sub-Div. No. 4		
766	Dawson, William	P 7	12	O

5
4
6
9
No. 5

4 O

No. 3
do

o. 3

Municipal Election

DESCRIPTION

Elections to the

765	Dawson, Frederick	P 7	12	O
769	Downey, John	P 8	13	O
770	Downey, Henry	P 3	14	O
773	Downey, Bernard	P 8	13	O
776	DeBlaquier, Henry	P 7	13	O
777	Doyie, John W.	P 5	14	O
778	Disher, John	P 5	14	O

788	Ecker, David	P 8	9	O
787	Ecker, Daniel	P 8	9	O
790	Ecker, James	P 6	10	T
792	Evans, John	P 6	11	O
791	Ecker, Abraham	P 4	12	T

804	Fick, Isaac N.	P 1	9	O
805	Franklin, Wellington	P 3	9	O
812	Fairburn, James	P 3	12	O
813	Fishbeck, Henry	P 3	11	O
815	Furrah, William B.	P 4	14	O
	Franklin, William B.	See Sub. Dic. No. 2		
	Franklin, Nelson	do do do		

827	Garner, Jacob	P 7	10	O
831	Gable, Lemon	P 5	11	O
832	Gable, John	P 5	11	O
833	Godby, George	P 11	11	O
834	Godby, Charles	P 1	11	O
835	Giffard, John H.	P 4	13	O
838	Graves, Joseph P.	P 8	14	T
840	Graden, Samuel	P 2	14	T
841	Gr. d. Th. Thom. B.	P 2	14	O
790	Garrett, W. W.	P 7	10	O
1241	Gray, R. C.	P 7	10	O

864
863
865
875
877
878

906
896
897
898
899

910

918
917
919
923

931
932
942
941
943
944
945
946
948
950
951
952
953
954
955

0000000000

861	Hoffman, William	P 2	10	T
863	Hoffman, Edward	P 2	9	T
865	Hutchinson, Alfred	P 8	10	O
875	Hulbert, William	P 7	12	O
877	House, John Shingler	P 1	10	O
878	Hyland, John	P 3	14	O

0000000000

906	Joice, Solomon	P 1	10	O
896	Jackson, Charles	P 8	13	O
897	Jackson, Edward	P 8	9	O
898	Johnson, James	P 3	13	O
899	Jeneraux, David	P 1	14	O

0000000000

910	King, Joseph	P 2	10	O
918	Long, William	P 5	10	T
917	Long, James	P 5	10	O
919	Leighfield, William	P 6	9	O
923	Lee, Benjamin	P 1	14	O

0000000000

931	Murkland, Richard	P 8	9	O
932	Moore, John A.	P 1	9	O
942	Mills, William	P 6	11	O
941	Mills, William jr.	P 6	11	T
943	Mills, John	P 5	12	O
944	Mulburger, Anthony	P 8	11	O
945	McKibbon, William	P 8	12	O
946	Mills Robert M	P 8	11	O
948	McGregor, James	P 5	13	O
950	Mansell, Nathaniel	P 2	13	O
951	Masher, Jehu	P 2	12	O
952	Myers, George E.	P 1	14	O
953	McBride, Samuel	P 1	12	O
954	Mitchel, Albert	P 2	14	O
955	Mickle, William	P 3	13	O

Newell, Hugh

See Sub-Div. No. 4

1003	Ostrander, John	P 6	12	O
839	Ostrander, John	P 8	14	O

1008	Pressy, Enos	P 4	11	O
1009	Pressy, David	P 4	11	O
1010	Pressy, Abodnego	P 4	11	O
1012	Patient, Benjamin	P 7	14	O
1013	Patient, George D.	P 7	14	T
1014	Parney, Vincent	P 1	14	T
1015	Parney, David	P 1	14	O

Pressy Samuel 4 11 F.S

1029	Rohrer, Daniel	P 4	9	O
1031	Rohrer, William Wallace	P 5	9	O
1030	Rohrer, John J.	P 5	9	O
1032	Rhorer, Jacob	P 8	10	O
1035	Rutlege, John	P 1	12	O
1036	Rutlege, Charles	P 1	12	O
1038	Rolph, George	P 5	13	O
1039	Reid, Willis	P 8	13	O
1040	Robinson, James V.	P 1	13	O

1068	Shaw, John M.	P 7	10	O
1072	Stewart, Charles	P 8	11	O
1074	Sinden, Samuel	P 4	14	O
1080	Strattan, Henry	P 8	14	O
1081	Smith, Jacob	P 2	14	O
1083	Slaght, George	P 1	13	O
1084	Slaght, James	P 1	13	O
1085	Swance, John	P 1	13	O
1086	Simmons, Hiram	P 5	14	O
1087	Secord, John L.	P 6	14	O

125
130
132
138
139
141
142
143
144
146
145
147
151
152
154
155
156
157
158
159
1187
1178

Taylor, Solomon

P 6

14

O

O
O

125	Wilcox, Richard	P 5	9	O	
130	Wiley, Samuel	P 2	10	O	
	Williams, William P.	See Sub-Div. No. 4			660
132	Williams, Henry B.	P 4	10	O	
138	Wingrove, Omar W.	P 8	11	O	
139	Wilson, Daniel	P 8	10	O	
141	Wilson, Thomas	P 7	10	T	
142	White, William	P 1	9	T	
143	Winters, Samuel	P 2	12	O	118
144	Winters, James H.	P 5	11	O	
146	Winch, John	P 5	12	O	
145	Winch, Richard	P 5	12	O	
147	Wark, Henry	P 4	13	O	
151	Wilson, Charles	P 8	14	O	652
152	Wilson, William	P 8	14	T	
154	Wilson, Mahlon B	P 8	14	O	
155	Woodward, William	P 6	14	O	
156	Woodward, Large	P 6	14	O	
157	Whitehead, Josephus	P 6	14	O	781
158	Willis, Robert	P 2	14	O	660
159	Whitney, Sardine	P 1	14	O	
	Wilson, William N. R.	See Sub-Div. No. 5			
1187	Wark, John	P 4	13	O	

O
O
O
O
T
O

Z.S

O
O
O
O
O
O
O
O
O

1178	Zimmer, Frederick	P 8	11	O	
------	-------------------	-----	----	---	--

Total in Division 14

O
O
O
O
O
O
O
O
O
O
O
O

PART 2.—List of persons entitled to vote at Municipal Elections only.

No. ON ROLL	NAME	LOT	CON.	DESCRIPTION
637	Alward, Lafayette	P 8	11	0
651	Brown, Stephen H.	P 1	9	0
811	Flashman, James	P 1	11	0
826	Gibbon, William	P 6	10	0
1137	Robinson, Jonathan	P 2	11	0
1034	Robinson, George	P 1	11	0
628	Stewart, James	P 8	11	0
1140	Wilson, William C.	P 8	10	0

PART 3.—List of persons entitled to vote at Elections to the Legislative Assembly only. None.

POLLING SUB-DIVISION No. 8—Consisting of Lots No. 9, 10, 11, 12, 13, 14, 15 and 16, in concessions 9, 10, 11, 12, 13, and 14. Polling Place—Langton

PART 1.—List of persons entitled to vote at both Municipal elections and elections to the Legislative Assembly

No. ON ROLL	NAME	LOT	CON.	DESCRIPTION
623	Armstrong, Emelius	P 10	10	O
624	Anscomb, Lorenzo	P 12	12	O
625	Austin, Lewis	P 10	11	O
626	Axford, William	P 12	12	T
633	Axford, George	P 10	14	T
634	Anger, Charles L.	P 9	14	T
626	Axford, John	P 12	12	O
	<i>Allexand Alexander</i>	" 10	"	T
653	Boyd, William S.	P 16	9	O
654	Boyd, James	P 16	9	O
656	Burgess, John	P 12	12	O
657	Boughner, George	P 12	12	O
658	Bouk, Frederick	P 12	11	O
660	Brown, Theophilus	P 12	12	O
661	Brown, William	P 9	11	O
666	Boughner, Hiram	P 12	13	O
668	Boughner, David	P 13	13	O
669	Boughner, Lewis	P 13	13	T
667	Bunker, George	P 13	13	T
670	Bartol, Matthew	P 11	14	O
672	Barton, Thomas	P 10	14	O
673	Brislow, John	P 10	14	O
674	Butler, Patrick	P 9	14	O
679	Bartlet, Eli	P 16	14	T
690	Bain, William	P 14	12	T
691	Boughner, Wesley	P 14	12	O
692	Boughner, Cameron	P 14	12	T
696	Bunker, Robert	P 16	13	O
655	Boughner, Leoman	P 13	12	O
	<i>Birdsall Samuel</i>	" 12	14	T
	<i>Birdsall Joseph</i>	" 12	14	T
716	Campbell, John	P 11	10	O
717	Cruiso, Peter	P 13	9	O

718	Cruise, James H.	P 14	10	O
	Councer, Richard	See Sub Div. N. 7		
725	Cronwell, Matthew	P 11	14	O
728	Cattle, Joseph	P 14	12	O
729	Cattle, John	P 14	12	O
737	Collings, Thomas H.	P 16	12	O
739	Chambers, Isaac	P 16	12	O
740	Collings, Joseph	P 13	10	O
741	Cole, William	P 16	10	O
742	Collings, John	P 16	11	O
748	Craig, William	P 13	9	O

Chambers Reuben 16 *James son*

764	Dean, James H.	P 12	12	O
768	Dowley, Matthew	P 11	13	O
771	Downey, Daniel	P 9	13	O
772	Downey, Robert	P 9	13	T
774	Davis, Henry	P 10	14	T
779	Dean, Lenard	P 15	14	O
784	Deog, Fredrick	P 15	10	O
785	DeWitt, Oran D.	P 12	9	O
786	DeWitt, Charles	P 12	10	O

167

789	Epps, Stanly	P 11	12	O
793	Earl, Zenophon	P 11	13	O
806	Flemming, Donald	P 16	12	O
807	Flakerty, William	P 11	13	O
809	Fick, Abner	P 11	11	O
810	Fick, McIntyre	P 9	10	T
814	Fitzsimmons, James	P 11	13	O
816	Fisher, James W.	P 13	14	O
817	Fisher, Peter	P 13	14	O

825	Gillet, Albert	P 19	9	O
828	Gable, Frank	P 13	12	O
829	Gray, Abraham	P 12	12	O
830	Galespy, George	P 9	11	O
836	Goring, John	P 12	13	O
845	Gray, George	P 16	13	O
846	Gray, George A.	P 16	13	T

855	Hewitt, George	P 12	10	O
866	Hagan, Craig	P 12	10	O
867	Hagan, William	P 15	9	O
868	Husband, Joseph	P 12	11	O
870	Hellyer, Thomas C.	P 10	12	O
871	Howell, Albert	P 9	12	T
874	Hinks, James	P 9	11	O
876	Hind, John	P 11	12	O
882	Hethrington, John	P 15	14	O
881	Hethrington, Cuthbert	P 15	14	O
887	Hessack, Thomas	P 15	10	O
893	Hobisel, Edward	P 15	10	O
894	Hemple, Joseph	P 15	10	O

~~Hicks Alexander 9 11 James son~~

902	Jarvis, Isaac	P 11	9	O
903	Jarvis, Edward	P 11	9	O

	Kerrigan, William	See Sub-Div. No. 5		
	Killmaster, Benjamin	do	do	do 1, 2 & 3
914	Knowles, James B.	P 13	10	O
909	Kenny, Robert	P 12	12	O
936	Killmaster, Chas. H.	P 12	12	O

828	Landon, Zebulon	P 13	9	O
920	Laymon, Ephraim	P 13	12	O

921	Laymon, Frank	P 11	9	
922	Laymon, William D.	P 13	11	O
928	Landon, Zebuloiden	P 16	13	O
929	Lear, William	P 14	11	O
924	Lefler, Alum	P 15	14	O
923	McDowell, Matthew	P 12	9	O
	McLennan, John K.	See Sub-Div. No. 2		
936	Milne, Peter	P 12	12	O
937	Miller, Harrison	P 12	12	O
939	Marshall, Edmund	P 12	12	O
940	McKenley, John	P 12	12	O
947	Matthews, Ziba	P 12	12	O
956	McQueen, David	P 11	14	O
960	McCready, William	P 14	13	O
961	McCready, James	P 14	13	O
962	Morrison, James	P 14	13	O
963	McMaster, John	P 16	14	O
964	McMaster, James	P 16	14	O
965	McMaster, Joel	P 16	14	O
970	McDonald, Jonas	P 13	11	T
979	McCaffray, James	P 14	10	O
980	Moore, Edward	P 14	9	O
981	Moore, James J.	P 14	9	T
	McKillen, Benjamin	See Sub-Div. No. 5		
	McKillen, Samuel	do do do		
	McKillen, James	do do do		
775	McCready, John	P 10	14	O
1004	Oliver, John W.	P 10	14	O
1008	Oliver, James	P 12	14	O
1007	Proux, Mitchell	P 13	12	O
1023	Pickensgill, Thomas	P 14	12	O
1011	Petitt, Jesse	P 10	12	T

1049 Robinson, Hiram P 14 10 # 011
 1050 Rollosen, Aaron P 15 11 # 011
 1137 Rutterford, Stephen P 12 12 # 011

1061 Sopor, Jackson P 9 9 O
 1062 Slough, Able P 10 11 T
 1063 Sullivan, James P 12 11 O
 1064 Steinhoff, John P 12 11 O
~~1065 Swick, Abbotom P 12 11 T~~
 1066 Swick, Stephen P 12 11 T
 1067 Schooley, John P 12 12 O
 1068 Shaw, John M. P 11 12 O
 1069 Snively, William W. P 9 11 O
 1070 Snively, John P 10 12 O
 1071 Snively, Timothy P 9 11 O
 1073 Shoff, Albert P 9 10 T
 1074 Sinden, Samuel P 9 13 O
 1075 Sinden, Foster C. P 10 13 T
 1076 Smith, Joseph P 12 14 O
 1078 Scott, Robert P 11 14 O
 1079 Sinden, Solomon P 10 13 O
 1082 Stewart, Henry P 15 10 O
 1088 Smith, Jeremiah P 11 14 O
 1097 Smith, Joseph W. P 11 15 O
 1103 Smith, Samuel P 15 9 O
 837 Sipes, Henry P 12 13 T

1108 Tait, Malcolm P 9 9 O
 1109 Tait, John P 9 9 O
 1111 Thompson, John P 12 12 O
 1112 Tweedale, Joseph M. P 13 11 O
 1113 Trask, George P 12 12 O
 1117 Taylor, William P 15 12 O
 1118 Taylor, James P 15 13 O
 Tisdale, Ephraim See Sub-Div. No. 6

1123 Vale, Charles P 13 9 O
 1124 Vale, Charles L. P 13 9 T

1123	Wingrove, Thomas	P 11	11	O
1134	Wingrove, Wesley	P 11	11	O
1135	Wilson, Henry	P 12	12	O
1137	Wark, John	P 12	12	O
1147	Wilson, Taylor	P 9	12	O
1169	Wilson, Sherman	P 13	12	O
690	Walker, David	P 12	12	O
1160	Weeks, Walter	P 12	12	O

Total in Division 163

PART 2.—List of persons entitled to vote at Municipal Elections only.

No. ON ROLL	NAME	LOT	CON.	DESCRIPTION
721	Chambers, Joseph	P 12	12	O
823	Ferguson, Robert	P 13	11	O
869	Holmes, Robert	P 12	12	O
1136	Lamb, William	P 12	12	O
938	Mayo, Thomas	P 11	12	O
1001	Naperville, Levi	P 12	10	O
1033	Ross, William	P 13	11	O
1136	Wrightman, James A.	P 12	11	O

PART 3.—List of persons entitled to vote at Elections to the Legislative Assembly only. None.

POLLING SUB-DIVISION No. 9—Consisting of Lots No. 17, 18, 19, 20, 21, 22, 23 and 24, in Concessions 10, 11, 12, 13 and 14. Polling Place—Holtby's School House.

PART 1.—List of persons entitled to vote at both Municipal elections and elections to the Legislative Assembly

No. ON ROLL	NAME	LOT	CON.	DESCRIPTION
636	Armstrong, Thomas M.	P 17	14	O
637	Aker, Hugh	P 21	13	O
638	Awford, John jr.	P 23	11	O
639	Able, John	P 22	10	O
640	Able, William	P 24	11	O
680	Bowers, Bernard	P 18	14	O
680	Booth, John	P 19	14	O
681	Booth, Archibald	P 20	14	O
682	Booth, John jr.	P 20	14	O
683	Brown, Joshua	P 21	14	O
684	Booth, James	P 20	14	O
685	Bloomfield, Edward	P 19	14	O
686	Boughner, Matthias	P 17	14	O
687	Ball, Jonathan	P 17	13	O
688	Brackenberry, John	P 22	12	O
689	Brooks, William	P 21	12	O
690	Bain, William	P 18	11	O
693	Barclay, James	P 18	10	O
694	Brandow, Oliver	P 19	10	O
695	Brandow, Jacob	P 20	10	O
697	Bloomfield, Nelson	P 23	10	O
698	Betram, George T.	P 21	10	O
727	Cole, Jacob	P 23	13	O
	Cattle, Joseph	See Sub-Div. No 9		
	Cattle, John	do	do	do
731	Cole, William J.	P 17	14	O
732	Cattle, Edward B.	P 19	13	O
733	Cattle, George H.	P 20	13	O

734	Collier, George	P 24	12	O
736	Collins, John L.	P 23	11	O
738	Curtis, Thomas	P 17	12	O
	Collings, John	See Sub-Div. No. 8		
743	Collings, David	P 18	10	O
744	Cain, Nelson	P 19	10	T
745	Chambers, Edward	P 20	10	O
746	Chambers, Elias	P 21	11	O
747	Craig, Robert	P 19	10	O
844	Charlton, John	P 18	13	O

760	Davis, John M.	P 20	13	O
780	Doan, Jonathan	P 17	13	O
781	Davis, Eli	P 21	11	O
782	Dales, Henry	P 23	10	O
783	Dales, George	P 23	10	T

794	Ellison, Joseph	P 18	12	O
-----	-----------------	------	----	---

800	Ful ^R lmer, Michael	P 18	14	T
801	Forbes, Peter	P 22	10	T
818	Ferguson, James	P 21	13	T
819	Ferguson, William	P 21	13	O
820	Ferman, Rubin	P 20	12	O
821	Ferman, Benjamin	P 20	12	T
822	Ferman, Henry	P 19	12	O
824	Fairchild, Joseph	P 24	11	O

842	Gilbert, John E.	P 20	13	O
843	Gray, Thomas C.	P 18	13	O
847	Geo, Peter	P 24	10	O

879	Hillyer, Samuel C.	P 24	14	880
880	Hayes, John C.	P 18	14	112
883	Harrison, Robert H.	P 23	12	872
884	Hill, William	P 20	11	422
885	Holtby, John	P 18	12	800
	Hunter, John	See Sub-Div. No. 6		802
889	Herbert, George	P 17	11	772
890	Hill, John	P 21	10	0
	Hill, Joseph	See Sub-Div. No. 5		0
1048	Holtby, Matthias Rev.	P 15	12	892

	Jackson, Charles	See Sub-Div. No. 7		
900	Jackson, Edwin	P 21	14	07
901	Jackson, Thomas H.	P 21	14	T
	Jarvis, Isaac	See Sub-Div. No. 8		
	Jarvis, Edward R.	do	do	do

				1016
				1017
	Knowles, William	do		1018
	Knowles, Thomas	do		1019
	Knowles, Robert	do		1020
972	Knowles, James	P 17	10	0
				1021
				1022
				1023
				1024

925	Lonks, William H.	P 23	14	0
926	Lee, Enock	P 24	13	0
930	Laymon, George	P 20	11	0

				1043
				1044
				1045
957	Marsland, John	P 23	14	0
959	McKim, Robert	P 22	13	0
966	Messacar, Hiram	P 19	12	0
967	Messacar, Eli	P 21	12	0
969	McCollow John	P 20	12	0

		48		
968	McCollom, John jr.,	P 21	12	
971	Moore, George W.	P 18	11	
973	Miner, Daniel	P 19	11	
974	Miner, James A.	P 19	11	
975	Milne, Alexander	P 24	10	
978	Murphy, Patrick	P 23	10	
977	Marshall, Joseph	See Sub-Div. No. 6.		
	McEwen, Walter	do	do	
	McEwen, John	do	do	
976	Murphy, John	do	do	

O O T O

775	Nickle, Alexander	P 24	10	
-----	-------------------	------	----	--

O

1016	Pratt, William	P 18	14	
1017	Pratt, John	P 18	14	
1018	Pratt, Joseph	P 19	14	
1019	Pick, Richard	P 21	14	
1020	Pick, Robert	P 21	14	
1021	Palmer, E. R.	P 21	14	
1022	Plowis, William	P 23	14	
1023	Plewis, Isaac	P 24	13	
1023	Pickersgil, Thomas	P 19	12	

O O T O O T O C

1042	Robinson, George	P 22	14	
1043	Robinson, Frederick	P 22	14	
1044	Reid, John J.	P 24	10	
1045	Reid, James R.	P 21	14	
1046	Roberts, Vincent	P 22	11	
1047	Reid, Atchihald	P 18	12	
927	Roberts, Thomas	P 24	13	

O O O O T O T O

1089	Smith, William	P 24	14	0
1090	Shaw, Nathaniel	P 17	14	0
1091	Sutton, Thomas	P 19	12	0
1092	Sinden, Alexander	P 22	12	0
1094	Swain, Henry	P 19	11	0
1095	Swain, Gilbert	P 17	12	0
1096	Swain, George	P 17	12	0

1115	Tait, George	P 17	14	0
1116	Tait, David	P 22	14	0
1119	Thompson, John	P 18	12	0

122	Veit, Leonard	P 21	11	0
-----	---------------	------	----	---

1160	Wilson, David	P 24	14	0
1161	Wilson, Abner	P 24	14	0
1162	Wilson, John	P 23	13	0
1163	Wilson, Oscar	P 23	13	0
1164	Wilson, Lewis B.	P 21	14	0
1165	Wilson, Albion	P 19	14	0
1166	Watterson, Thomas	P 20	13	0
1167	Wood, George	P 24	12	0
735	Wood, Talbot	P 24	12	0
1168	Woodward, Ira P.	P 18	11	0
1170	Wells, Eli	P 20	10	0
1171	Wilson, George	P 22	11	0
1172	Wimhodge, William	P 24	10	0

Total in Division 133

PART 2.—List of persons entitled to vote at Municipal Elections only.

No. on Roll	NAME	LOT	CON.	DESCRIPTION
1				1001
2				1001
3				1001
4				1001
5				1001
6				1001
7				1001
8				1001
9				1001
10				1001
11				1001
12				1001
13				1001
14				1001
15				1001
16				1001
17				1001
18				1001
19				1001
20				1001
21				1001
22				1001
23				1001
24				1001
25				1001
26				1001
27				1001
28				1001
29				1001
30				1001
31				1001
32				1001
33				1001
34				1001
35				1001
36				1001
37				1001
38				1001
39				1001
40				1001
41				1001
42				1001
43				1001
44				1001
45				1001
46				1001
47				1001
48				1001
49				1001
50				1001

PART 3.—List of persons entitled to vote at Elections to the Legislative Assembly only.

I John Paelan Clerk of the Municipality of the Township of Walsingham, in the County of Norfolk, do hereby certify that the within list is a correct list for the year 1877 of all persons, appearing by the last revised Assessment Roll of the said Municipality to be entitled to vote at elections for members of the Legislative Assembly, and at Municipal elections, and a copy of such list was first posted up in my office at Walsingham Centre on the 23rd day of August, and I hereby call upon all electors to examine the said list, and if any omissions or other errors are perceived therein, to take immediate proceedings to have the said errors corrected according to law.

Dated this 23rd day of Aug.

JOHN PAELAN,

Clerk of the Municipality of Walsingham.

