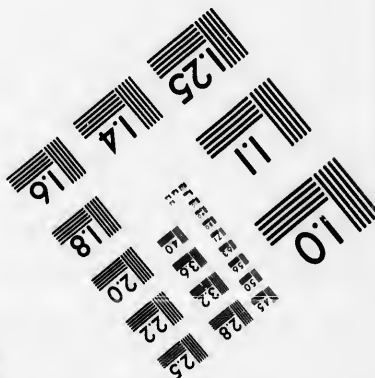
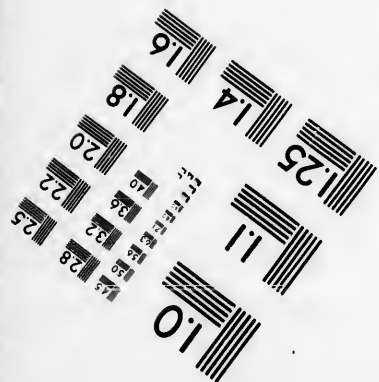
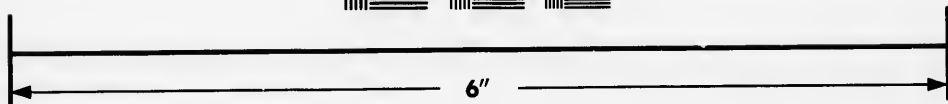
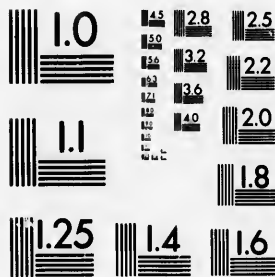


**IMAGE EVALUATION  
TEST TARGET (MT-3)**



**Photographic  
Sciences  
Corporation**

23 WEST MAIN STREET  
WEBSTER, N.Y. 14580  
(716) 872-4503

1.8  
2.0  
2.2  
2.5  
2.8  
3.2  
3.6  
4.0

**CIHM/ICMH  
Microfiche  
Series.**

**CIHM/ICMH  
Collection de  
microfiches.**



Canadian Institute for Historical Microreproductions / Institut canadien de microreproductions historiques

1.0  
1.2  
1.4  
1.6

**© 1985**

Technical and Bibliographic Notes/Notes techniques et bibliographiques

The Institute has attempted to obtain the best original copy available for filming. Features of this copy which may be bibliographically unique, which may alter any of the images in the reproduction, or which may significantly change the usual method of filming, are checked below.

L'Institut a microfilmé le meilleur exemplaire qu'il lui a été possible de se procurer. Les détails de cet exemplaire qui sont peut-être uniques du point de vue bibliographique, qui peuvent modifier une image reproduite, ou qui peuvent exiger une modification dans la méthode normale de filmage sont indiqués ci-dessous.

- Coloured covers/  
Couverture de couleur
- Covers damaged/  
Couverture endommagée
- Covers restored and/or laminated/  
Couverture restaurée et/ou pelliculée
- Cover title missing/  
Le titre de couverture manque
- Coloured maps/  
Cartes géographiques en couleur
- Coloured ink (i.e. other than blue or black)/  
Encre de couleur (i.e. autre que bleue ou noire)
- Coloured plates and/or illustrations/  
Planches et/ou illustrations en couleur
- Bound with other material/  
Relié avec d'autres documents
- Tight binding may cause shadows or distortion along interior margin/  
La reliure serrée peut causer de l'ombre ou de la distorsion le long de la marge intérieure
- Blank leaves added during restoration may appear within the text. Whenever possible, these have been omitted from filming/  
Il se peut que certaines pages blanches ajoutées lors d'une restauration apparaissent dans le texte, mais, lorsque cela était possible, ces pages n'ont pas été filmées.
- Additional comments:/  
Commentaires supplémentaires:

- Coloured pages/  
Pages de couleur
- Pages damaged/  
Pages endommagées
- Pages restored and/or laminated/  
Pages restaurées et/ou pelliculées
- Pages discoloured, stained or foxed/  
Pages décolorées, tachetées ou piquées
- Pages detached/  
Pages détachées
- Showthrough/  
Transparence
- Quality of print varies/  
Qualité inégale de l'impression
- Includes supplementary material/  
Comprend du matériel supplémentaire
- Only edition available/  
Seule édition disponible
- Pages wholly or partially obscured by errata slips, tissues, etc., have been refilmed to ensure the best possible image/  
Les pages totalement ou partiellement obscurcies par un feuillet d'errata, une pelure, etc., ont été filmées à nouveau de façon à obtenir la meilleure image possible.

This item is filmed at the reduction ratio checked below/  
Ce document est filmé au taux de réduction indiqué ci-dessous.

10X	14X	18X	22X	26X	30X
<input type="checkbox"/>	<input type="checkbox"/>	<input checked="" type="checkbox"/>	<input type="checkbox"/>	<input type="checkbox"/>	<input type="checkbox"/>
12X	16X	20X	24X	28X	32X

The  
to th

The  
pos  
of th  
filmi

Orig  
begi  
the l  
sion,  
othe  
first  
sion,  
or ill

The  
shall  
TINU  
whic

Map  
diffe  
entir  
begi  
right  
requ  
meth

The copy filmed here has been reproduced thanks to the generosity of:

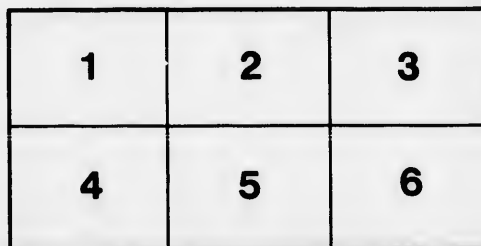
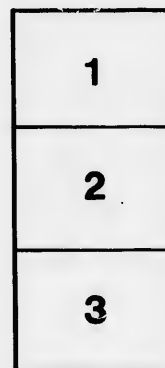
Douglas Library  
Queen's University

The images appearing here are the best quality possible considering the condition and legibility of the original copy and in keeping with the filming contract specifications.

Original copies in printed paper covers are filmed beginning with the front cover and ending on the last page with a printed or illustrated impression, or the back cover when appropriate. All other original copies are filmed beginning on the first page with a printed or illustrated impression, and ending on the last page with a printed or illustrated impression.

The last recorded frame on each microfiche shall contain the symbol  $\rightarrow$  (meaning "CONTINUED"), or the symbol  $\nabla$  (meaning "END"), whichever applies.

Maps, plates, charts, etc., may be filmed at different reduction ratios. Those too large to be entirely included in one exposure are filmed beginning in the upper left hand corner, left to right and top to bottom, as many frames as required. The following diagrams illustrate the method:



L'exemplaire filmé fut reproduit grâce à la générosité de:

Douglas Library  
Queen's University

Les images suivantes ont été reproduites avec le plus grand soin, compte tenu de la condition et de la netteté de l'exemplaire filmé, et en conformité avec les conditions du contrat de filmage.

Les exemplaires originaux dont la couverture en papier est imprimée sont filmés en commençant par le premier plat et en terminant soit par la dernière page qui comporte une empreinte d'impression ou d'illustration, soit par le second plat, selon le cas. Tous les autres exemplaires originaux sont filmés en commençant par la première page qui comporte une empreinte d'impression ou d'illustration et en terminant par la dernière page qui comporte une telle empreinte.

Un des symboles suivants apparaîtra sur la dernière image de chaque microfiche, selon le cas: le symbole  $\rightarrow$  signifie "A SUIVRE", le symbole  $\nabla$  signifie "FIN".

Les cartes, planches, tableaux, etc., peuvent être filmés à des taux de réduction différents. Lorsque le document est trop grand pour être reproduit en un seul cliché, il est filmé à partir de l'angle supérieur gauche, de gauche à droite, et de haut en bas, en prenant le nombre d'images nécessaire. Les diagrammes suivants illustrent la méthode.

tails  
du  
odifier  
une  
image

rrata  
to

pelure,  
n à

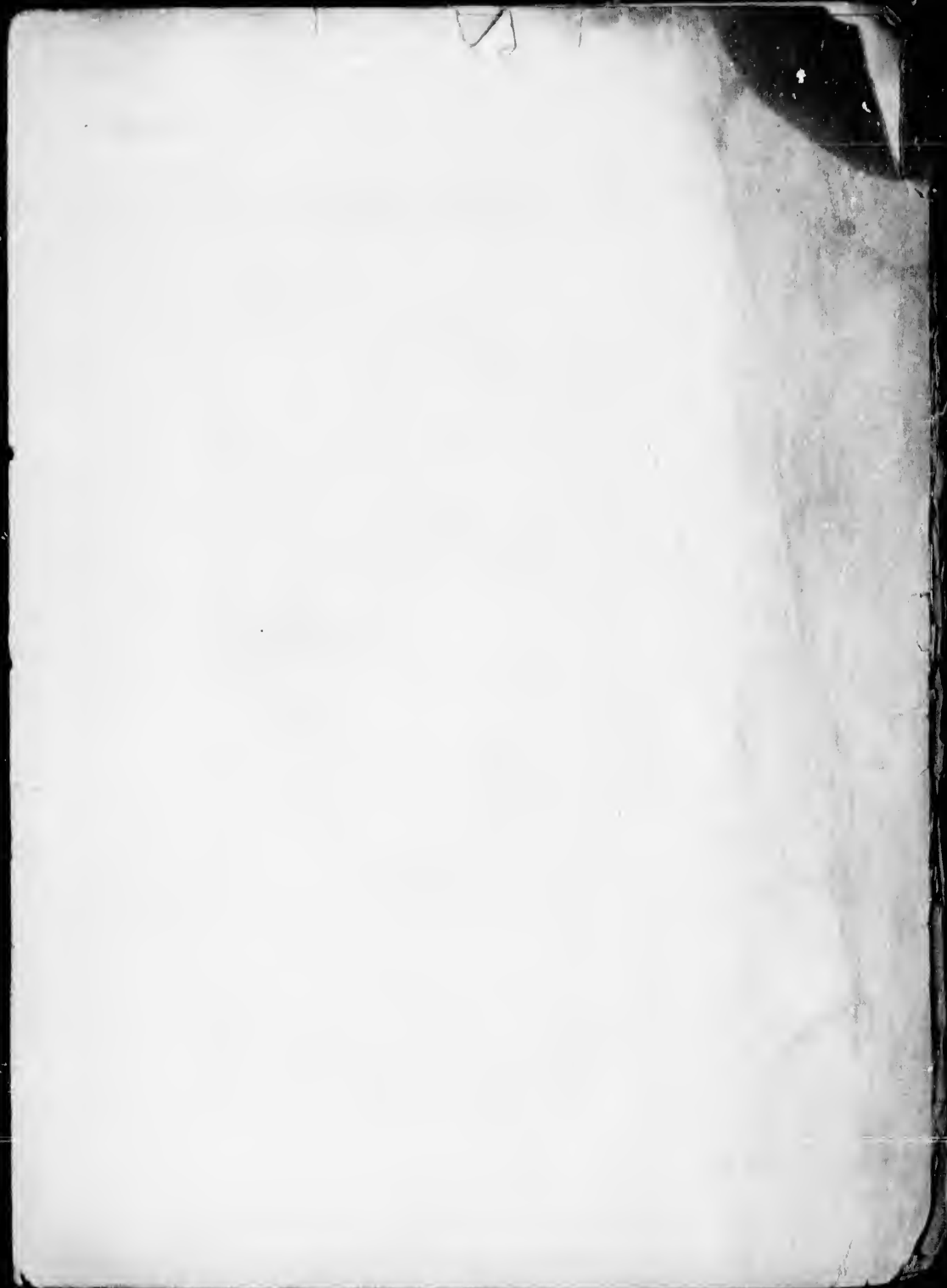
32X

LP  
P38497  
087B4





QUEEN'S UNIVERSITY  
LIBRARY





E. Benson Young, Jr.







# The Bells of Christmas ❀

By ❀ ❀ ❀ ❀ ❀ ❀  
E. R. Person Young, Jr.



TORONTO:  
WILLIAM BRIGGS

LP PS8497. Q87B4



## The Bells of Christmas



**R**ing the bells of Christmas,  
Here it is again!  
Ring them out with glad new joy—  
Peace, good-will to men!

Ring the bells of Christmas!  
Tell the story o'er—  
Of the Christ who loved mankind,  
Opening heaven's door.

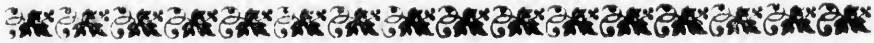
Ring the bells of Christmas!  
Ring its joy, oh, Earth;  
Ring its joy, ye heavens above—  
Joy at Jesus' birth.



242

3

243



## Love Expressed



**I**s truth lost in the words that it proclaim?  
To breathe the rose's fragrance, is't a blight?  
Is gold less gold when fashioned by the flame?  
Or does the sun grow faint when men see light?  
Nay, the well-fed sun delights to pour his rays  
And fill with light the little eyes of men;  
The yellow gold would tip a pin and blaze  
With equal grace as on a diadem;  
The happy rose is proud to give its sweets  
And fill the breeze with balmy airs of heaven;  
While truth, that with eternal sweep completes  
The circle of all things, to words is leaven.  
Methinks I also may my love express,  
Nor have it spoiled by giving it a dress.



GA

S  
J  
T  
E  
"  
J  
T  
J

GA





## The Sisters



**S**wweet knowledge reigns with grace and pride,  
And knows her conquests well ;  
But meekly says : " My facts are but small stones  
That play beside the ocean swell ;  
While Faith, with her transcendent wings,  
Sweeps o'er the ocean broad ;  
And bears the humblest child of trust,  
Up to the bosom of its God."

" 'Tis true, I, Faith, sweep oceans broad,  
And bask where vision fails ;  
But knowledge, sister is, and from her stones  
I mount and spread my conquering sails.  
The twinkling stars men see, by Faith  
Grow into planets broad ;  
From words of love and deeds of light,  
I bear souls up to God."





T

U

J

J

T

J





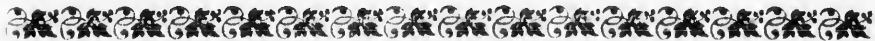
## Nature's Song



The hills have voices, the trees have tongues,  
And e'en on the lonely stream,  
We hear the calls of joy and fear,  
Like children in a dream.

Both high and sweet is the song of hope,  
And sad is the cry of fear;  
But firm and full is the note of faith,  
Though the winds are fickle and drear.

Then sailing along, we hear nature's song  
From forest and field and bay;  
But the greatest and best, for the heart's sweet rest,  
Is love's old roundelay.



628

628



## Some Wishes.



**M**ay the auroras come out to greet you,  
The stars in their courses give light;  
May the moonsbine be constant to meet you,  
And the sun hold forth in his might.

May the children of nature not fear you,  
The hares stop not in their play;  
May the fawns skipping be near you,  
And the partridges fly in your way.

May the rustling forests caress you,  
The woods, their secrets confide;  
May the streams pure nectar bless you  
As in nature's haunts you hide.



216

217



**T**hou hast lit the lamps of love  
In the temple of my heart;  
Take my life a sacrifice,  
And act the good priest's part.  
Enter thou into the holies,  
Claim thy part of all my soul;  
Sanctify, with thine own love, the offering,  
And all its blemishes will then be whole.

