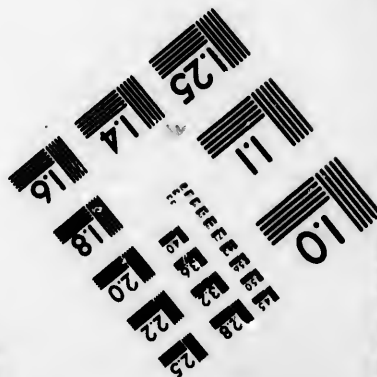
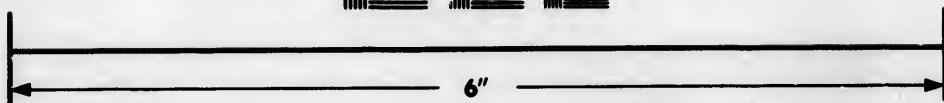
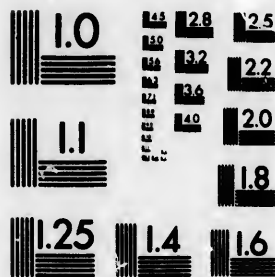


**IMAGE EVALUATION
TEST TARGET (MT-3)**



**Photographic
Sciences
Corporation**

23 WEST MAIN STREET
WEBSTER, N.Y. 14580
(716) 872-4503

1.8
2.0
2.2
2.5
2.8
3.2
3.6
4.0

**CIHM/ICMH
Microfiche
Series.**

**CIHM/ICMH
Collection de
microfiches.**



Canadian Institute for Historical Microreproductions / Institut canadien de microreproductions historiques

10
11
12
13
14
15
16
17
18
19
20

© 1985

Technical and Bibliographic Notes/Notes techniques et bibliographiques

The Institute has attempted to obtain the best original copy available for filming. Features of this copy which may be bibliographically unique, which may alter any of the images in the reproduction, or which may significantly change the usual method of filming, are checked below.

L'institut a microfilmé le meilleur exemplaire qu'il lui a été possible de se procurer. Les détails de cet exemplaire qui sont peut-être uniques du point de vue bibliographique, qui peuvent modifier une image reproduite, ou qui peuvent exiger une modification dans la méthode normale de filmage sont indiqués ci-dessous.

- Coloured covers/
Couverture de couleur
- Covers damaged/
Couverture endommagée
- Covers restored and/or laminated/
Couverture restaurée et/ou pelliculée
- Cover title missing/
Le titre de couverture manque
- Coloured maps/
Cartes géographiques en couleur
- Coloured ink (i.e. other than blue or black)/
Encre de couleur (i.e. autre que bleue ou noire)
- Coloured plates and/or illustrations/
Planches et/ou illustrations en couleur
- Bound with other material/
Relié avec d'autres documents
- Tight binding may cause shadows or distortion
along interior margin/
La reliure serrée peut causer de l'ombre ou de la
distortion le long de la marge intérieure
- Blank leaves added during restoration may
appear within the text. Whenever possible, these
have been omitted from filming/
Il se peut que certaines pages blanches ajoutées
lors d'une restauration apparaissent dans le texte,
mais, lorsque cela était possible, ces pages n'ont
pas été filmées.
- Additional comments:/
Commentaires supplémentaires:

- Coloured pages/
Pages de couleur
- Pages damaged/
Pages endommagées
- Pages restored and/or laminated/
Pages restaurées et/ou pelliculées
- Pages discoloured, stained or foxed/
Pages décolorées, tachetées ou piquées
- Pages detached/
Pages détachées
- Showthrough/
Transparence
- Quality of print varies/
Qualité inégale de l'impression
- Includes supplementary material/
Comprend du matériel supplémentaire
- Only edition available/
Seule édition disponible
- Pages wholly or partially obscured by errata
slips, tissues, etc., have been refilmed to
ensure the best possible image/
Les pages totalement ou partiellement
obscurcies par un feuillet d'errata, une pelure,
etc., ont été filmées à nouveau de façon à
obtenir la meilleure image possible.

This item is filmed at the reduction ratio checked below/
Ce document est filmé au taux de réduction indiqué ci-dessous.

10X	12X	14X	16X	18X	20X	22X	24X	26X	28X	30X	32X
<input type="checkbox"/>	<input type="checkbox"/>	<input type="checkbox"/>	<input type="checkbox"/>	<input type="checkbox"/>	<input type="checkbox"/>	<input type="checkbox"/>	<input type="checkbox"/>	<input checked="" type="checkbox"/>	<input type="checkbox"/>	<input type="checkbox"/>	<input type="checkbox"/>

The copy filmed here has been reproduced thanks to the generosity of:

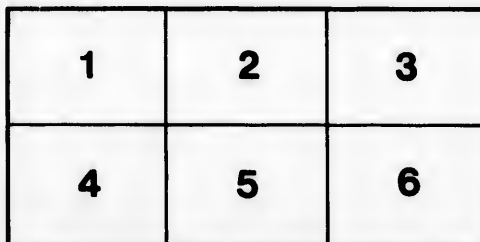
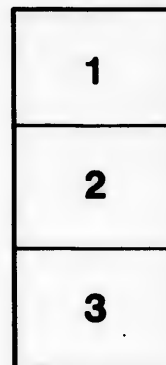
Douglas Library
Queen's University

The images appearing here are the best quality possible considering the condition and legibility of the original copy and in keeping with the filming contract specifications.

Original copies in printed paper covers are filmed beginning with the front cover and ending on the last page with a printed or illustrated impression, or the back cover when appropriate. All other original copies are filmed beginning on the first page with a printed or illustrated impression, and ending on the last page with a printed or illustrated impression.

The last recorded frame on each microfiche shall contain the symbol \rightarrow (meaning "CONTINUED"), or the symbol ∇ (meaning "END"), whichever applies.

Maps, plates, charts, etc., may be filmed at different reduction ratios. Those too large to be entirely included in one exposure are filmed beginning in the upper left hand corner, left to right and top to bottom, as many frames as required. The following diagrams illustrate the method:



L'exemplaire filmé fut reproduit grâce à la générosité de:

Douglas Library
Queen's University

Les images suivantes ont été reproduites avec le plus grand soin, compte tenu de la condition et de la netteté de l'exemplaire filmé, et en conformité avec les conditions du contrat de filmage.

Les exemplaires originaux dont la couverture en papier est imprimée sont filmés en commençant par le premier plat et en terminant soit par la dernière page qui comporte une empreinte d'impression ou d'illustration, soit par le second plat, selon le cas. Tous les autres exemplaires originaux sont filmés en commençant par la première page qui comporte une empreinte d'impression ou d'illustration et en terminant par la dernière page qui comporte une telle empreinte.

Un des symboles suivants apparaîtra sur la dernière image de chaque microfiche, selon le cas: le symbole \rightarrow signifie "A SUIVRE", le symbole ∇ signifie "FIN".

Les cartes, planches, tableaux, etc., peuvent être filmés à des taux de réduction différents. Lorsque le document est trop grand pour être reproduit en un seul cliché, il est filmé à partir de l'angle supérieur gauche, de gauche à droite, et de haut en bas, en prenant le nombre d'images nécessaire. Les diagrammes suivants illustrent la méthode.

errata
to

pelure,
n à

32X

C
I
C
J

P
P
C

M
J
J

F 1599

25-

AGENT IN QUEBEC
 FOR
McCowan's (of Portland)
FINNAN HADDIES,
BLOATERS, MACKEREL, HALIBUT,
SALMON, &c.

AGENT FOR
W. H. Lewis & Brothers'
 (BOSTON.)
HERMETICALLY SEALED
MEATS, SOUPS, FISH, &c.



AGENT IN QUEBEC
 FOR
Parsons' (of Guelph, C. W.)
SUPERIOR HAMS,
BACON, STILTON CHEESE, &c.

AGENT FOR
Buchanan's (of Montreal.)
BEEF, HAMS, TONGUES,
BACON & SAUSAGES.

ADAM WATTERS,
IMPORTER OF, & WHOLESALE & RETAIL DEALER,

IN
THE FOLLOWING GOODS,
11 & 13, St. John Street, (opposite Palace Street,) Upper Town.

Stock at all times Extensive & Complete. Every article warranted to give satisfaction.

TEAS.
-GREEN.-
 Gunpowder, Young Hyson,
 Imperial, Hyson Twankay,
 Old Hyson, Twankay,
 Japan Hyson,
 " Young Hyson,
 " Hyson Twankay.

-BLACK.-
 English breakfast Souchong } extra fine
 Do Congou }
 Fine Souchong, Flowery Pekoe,
 Fine Congou, Orange Pekoe,
 Oolong,

COFFEE.
 Mocha, Maracaiibo,
 Java, Lu Guayra,
 Jamaica, Plantation Ceylon,

Roasted and ground daily on the premises.

CHOCOLATE AND COCOA.
 Cocoa Beans, Nibs, Broma, &c.
 Homopathic Cocoa,
 Preston's Broma,
 Mott's Broma,
 Dunn's Chocolate and Cocoa,
 Taylor's, do do
 Fry's, do do
 Mott's, do do
 Finest French do do

SUGARS.
 English Refined, in Loaves,
 Broken Loaf,
 Granulated,
 Ground,
 Extra Ground,
 Crushed White,
 Yellow Refined,
 Crystallised,
 Porto Rico, and Cuba.

SPICES.
Ground and Whole.
 Nutmegs, Cloves,
 Mace, Allspice
 Cinnamon, Caraways,
 Black Pepper, Ginger,
 White do Mixed Spices.
 Cayenne do

MUSTARD.
 Wix's in 4 and 2 lb. Jars,
 Do in 1 and 1/2 lb. Bottles.
 Colman's in 4 and 2 lb. Jars,
 French Mustard,
 Soyer's Aromatic do,
 Patent Prepared do,
 Curry Powder, in Bottles,
 Do do. in Caddies,
 Mulligatawny.

N.D. b
 5

ESSENCES.*For flavouring.*

Almond,	Celery,
Caraways,	Cinnamon,
Peppermint,	Cloves,
Mint,	Mace,
Rose,	Nutmeg
Lemon,	Orange,
Ratufia,	Ginger,
Vanilla,	Citron.
Coffee,	

SYRUPS.

Lemon,	Pine Apple,
Ginger,	Sarsapilla,
Raspberry,	Orange,
Strawberry,	Vanilla.

PICKLES, &c.

Imperial Hot,	Tomatoes, in tins,
West India,	Walnuts,
Oriental Pickles,	Piccaililli,
Bombay Mangoes,	Chow-Chow,
Mixed Pickles,	French Beans,
Gherkins,	Red Cabbage,
Onions,	French Capers,
Cauliflower,	French Olives,
Capiscum,	Spanish Olives,
Red and Green Chillies,	
Preserved Mushroom,	
Truffles,	Green Corn,
Green Peas,	Green Beans,
Côpes à l'Huile, (Rodel & Fils.)	

SAUCES.

Royal Table Sauce,
Soho Sauce,
Royal Osborne.
Prince of Wales Salad Sauce.
Prince of Wales Sauce,
Emperor of China Sauce,
King of Onda Sauce,
Sir Robert Peel Sauce,
John Bull do
Kalos Gensis do
Harvey's do
Reading do
Soyer's do
Soyer's Relish,
Soyer's Sultana Sauce,
Worcestershire do
Chetna Sauce,
Indian Chutney,
India Soy and Bengal Chutney,
Mogul Sauce,
Piquante Sauce,
Beefsteak Sauce,
Browning Sauce,
Universal Sauce,
Devonshire Sauce,
Tomato do
Essence of Shrimps,
Ess. Anchovies,
Mushroom and Walnut Catsup,
Pepper Sauce,
Prepared Horse Radish,
Salad Cream,
Salad Oil, quarts and pints,

VINEGAR.

Triple Clarified Bordeaux.
English Malt,
Raspberry,
Cayenne Vinegar,
Tarragon and Chilli.

BOTTLED FRUITS.

In Syrup, in Brandy and Crystallized.

Apricots,	Cherries,
Greengages,	Plums,
Red Currants,	Pears,
Black Currants,	Apples,
Strawberries,	Cranberries,
Raspberries,	Figs,

And a complete assortment of Tart Fruits.

PRESERVES.

Marmalade (*Keiller & Sons, Dundee.*)

Lemon Marmalade,	Pine Apple Jam
Cherries,	Damson do.
Gooseberries,	Gooseberry Jam,
Ginger in Jars,	Black Currant Jam
Do in bottles,	Greengage do
Chow Chow,	Red Currant Jelly,
Gum Quois,	Black do do.
Peaches,	Guava Jelly,
Honey,	Orange } Peets,
Plum Jam,	Lemon } Citron
Red Currant Jam,	
Strawberry Jam,	
Raspberry do.	

PREPARED JELLIES.

For table use.

Orange Jelly,	Noyeau do.
Lemon do.	Punch do.
Calf's-foot Jelly,	Madeira do.

POTTED MEATS.

Caviar, (*Astrakhan*)
Pâté de Foie Gras, Truffé,
Do. de Canard, do;
Do. de Lièvre do.
Do. de Veau do.
Pâté à Diable, Potted Ham,
Potted Game, Potted Tongue,
Anchovy Paste, Potted Beef,
Strasbourg Meats,
Fried Soles, Lobsters in Tins,
Anchovies, Mackerel in do.
Shrimp Paste, Haddock in do.
Sardines in Oil,
Potted Yarmouth Bloaters,

FRUITS, &c.

Layer Raisins } whole, half, and
Muscatel do. } quarter boxes.
Sultana do.
Valencia do.
Currants,
Grapes,
Figs,
Oranges,
Lemons,
Pine Apples,
Cocoa Nuts,
Prunes, in cartoons and jars,
Jordan Almonds,

Valencia Almonds,
Bitter do.
Paper Shell do.
Soft Shell do.
Hard Shell do.
Walnuts,
Barcelona Nuts,
English Filberts,
Do. Chesnuts,
Brazil and Cob Nuts.

CHEESE.

Gruyère Cheese,	Double Gloucester,
Stilton do	North Wiltshire,
Pine Apple,	American,
Queen's Arms,	Parnasan,
Cheddar,	Parson's Stilton,
Cheshire,	

BUTTER.

Choice Dairy, in tins and crocks,
Received Weekly.

CRACKERS.

FITTS MONTREAL--in barrels & boxes.

Double baked, Sweet,
Do do Plain,

Boston,	Cabin,
Soda,	Jonny Lind,
Wine,	Graham.

BISCUITS.

McKINNON'S, MONTREAL, in tins & boxes.

Passover Biscuits,	Picnie,
Queen's	Ginger,
Imperial,	Wine,
Crown,	Fancy Machine,
Coffee,	Cracknel,
Albert,	Nursery,
Abermethy,	Crystallized,

BLACKING.

Day & Martin's, in bottles, tins & paper,

CANDLES.

Finest English Sperm,	} Colored and Plain
Do American do	
Do French do	
Belmont do	

6's and 12's

Stearine,	Wax Wicks,
Paraffine,	No. 1 Tallow.
Adamantine,	

SOAP.

Steele's Liverpool,	Castile,
Casey's do	Brown Windsor,
Montreal,	Honey,
Quebec,	Rose of England,
Hearle's Manufacture, always in stock.	

BLUE.

Indigo,	Liquid,
Fig,	Ball Blue.

STARCH.

Berger's Satin,	Glenfield,
Do Rice,	Oswego,
Lescher's,	
Corn Starch for Puddings,	
Canada Starch Company's.	

BROOMS.

Hair and Corn Brooms,
Hair and Corn Dusters,
Hearth Brushes, | Stove Brushes,
Bannister do | Shoe do
Scrubbing do | Whitewash do

PROVISIONS.

Extra Superfine Flour,
Superfine Flour, | Backwheat Flour,
India Meal, | Split Peas,
Cracked Wheat, | Pensomeal,
Graham Flour, | Arracan Rice,
Oatmeal, | Ground do
Pot Barley, | East India Rice,
Pearl Barley,
Sugar-cured Hams and Bacon,
Labrador Herrings,
Lochsine Herrings, in firkins } *Imported*
Ling Fish } *direct*
Table Codfish, | Digby Herrings,
Blotters, | Finnan Haddies.

OILS.

Winter Strained Sperrn,
Solar Sperm, | Kerosene Coal Oil,
Olive, | Pale Seal,
Lard, | Rape Seed,
Straw Colored Seal,
Castor Oil, in bottles.

WINES.*Wool and Bottles.*

Pemartin & Co's. Sherry } Pale, Gold,
Duff, Gordon Co's. do } and
Domecq's Royal Arms of } Brown.
Spain,
Sandeman's Port, | Burgundy } Sweet
Graham's do. | Malaga }
Hunt's do. | Clarets in cases,
L. P. Teneriffe, | St. Julien,
Blackburn's Madeira,
Medoc and other brands.

—CHAMPAGNE.—Quarts and Pints.

Moet & Chandon's, | Imperial Cabinet,
Heidsieck & Co, | La Tour de Bouzy,
Mumm's and other brands,

BRANDY.

Pale and Dark. In Wood and in Cases.
Vine Grower's Company,
Martol's,
Hennessy's,
Planat & Co's,
Otarl, Dupuy & Co,
United Vineyard,
Jules Robin,
Bonault & Co's,
Pinet's
Donis, Monnie & Co's.
Dulary Bellamy & Co's.

Some very old
Vintages.**GIN.***Hhds. and in Cases.*

Schiedam Gin in Hhds.
do do. in Red Cases,
do do. in Green do.
Booth's Old Tom,
Royal Household do.

WHISKEY.*In Wood and Bottles.*

Burke's L. I. Irish, | Morton's Kingston
Ramsay's Scotch, | Molson's Montreal
Campbleton, | Dow's do.

RUM.

Fine Old Jamaica,

PORTER.*By the Barrel or Dozen.*

Barelay & Perkins. | Abbot's London,
Hibbert's do, | Byass's London,
Guinness's Dublin,

ALES.*By the Barrel or Dozen.*

Fowler's Prestonpans,
Younger's Edinburgh,
Tennent's do,
Campbell's Edinburgh
Alloa, | Allsopp's,
Bass & Co's | Montreal Ale,
Dow's XXX. and E. I. Pale Ales,

CIDER.

Penner's best,

LIQUEURS.

Grande Chartreuse
Kirschen Wasser,
Curacao,
Maraschino,
Ginger Wine,
Absynthe,
Annisette,
British Wines, *assorted.*

Noyeau, Seubac,
Parfait Amour,
Crème de Rose,
Assorted Liqueurs,
Cherry Brandy,
Cherry Cordial,
Lime Shrub,

TOBACCO.

Various Brands,

SUNDRIES.

Macaroni,
Vermicelli,
Gelatine,
Italian Paste,
Isinglass (fine)
Patent Groats,
Patent Barley,
Pearl Sago,
Tapioca,
Ground Rice,
Hominy,
Arrowroot,
Saleratus,
Baking Soda
Baking Powder,
Cream of Tartar,
Liverpool Salt,
Stoved Salt in bags
Do. do. in drums
Writing Paper,
Wrapping Paper,
Whiting,
Beeswax,
Rotten Stone,
Bath Bricks,
Bottle Wax,
Lamp Wicks,
Candle Wicks,
Night Lights,
Molasses,
Treaacle,
Sugar House Syrup.
Matches, (Byrant and May's Patent,)
Phenix Stove Polish,
Fishing Lines,
Deep Sea Lines,
Hamboro do.
Mustard Seed.
Fire Lighters,
Licuorice,
Wax Tapers,
Spanish Onions,
Corks,
Spiral Spills,
Epsom Salts,
Saltpetre,
Sulphur,
Copperas,
Black Lead,
Canary Seed,
Hemp Seed,
Playing Cards,
Alum,
Lamp Black,
T. D. Pipes,
Fancy Pipes,
Patent Pails,
Clothes Pins,
Shoe Thread,
Fancy Twine,
Polishing Paste,
Jars,
Demijohns,
Rosin,

MACKINNON'S CELEBRATED BISCUITS.

Supplied Wholesale at Manufacturer's Prices.

The Subscriber will be constantly supplied with Fresh Goods, as they appear in the English, American and Foreign Markets.

FRESH OYSTERS, in kegs and tins, from NEW YORK and BOSTON.

Prairie Chickens, Quail, Wild Ducks, Wild Turkeys, and Buffalo Tongues,
FROM THE FAR WEST IN THEIR SEASON.

Goods carefully packed and delivered within the city limits, at the Railway Station, and on board of Steamers, free of charge.

Terms Liberal.**PRICES MODERATE.****ADAM WATTERS,**

FINNAN HADDIE DEPOT,

11 & 13 St. John Street, opposite Palace Street, Quebec.

Printed by G. T. Cary.

