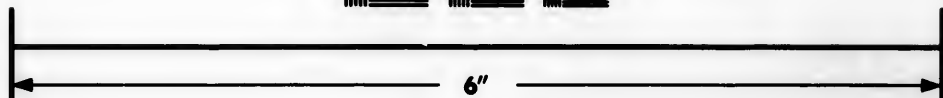
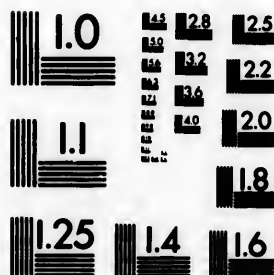


**IMAGE EVALUATION  
TEST TARGET (MT-3)**



**Photographic  
Sciences  
Corporation**

23 WEST MAIN STREET  
WEBSTER, N.Y. 14580  
(716) 872-4503

10  
11  
12  
13  
14  
15  
16  
17  
18  
19  
20  
21  
22  
23  
24  
25

**CIHM/ICMH  
Microfiche  
Series.**

**CIHM/ICMH  
Collection de  
microfiches.**



Canadian Institute for Historical Microreproductions / Institut canadien de microreproductions historiques

10  
11  
12  
13  
14  
15  
16  
17  
18  
19  
20  
21  
22  
23  
24  
25

**© 1983**

Technical and Bibliographic Notes/Notes techniques et bibliographiques

The Institute has attempted to obtain the best original copy available for filming. Features of this copy which may be bibliographically unique, which may alter any of the images in the reproduction, or which may significantly change the usual method of filming, are checked below.

L'Institut a microfilmé le meilleur exemplaire qu'il lui a été possible de se procurer. Les détails de cet exemplaire qui sont peut-être uniques du point de vue bibliographique, qui peuvent modifier une image reproduite, ou qui peuvent exiger une modification dans la méthode normale de filmage sont indiqués ci-dessous.

- Coloured covers/  
Couverture de couleur
- Covers damaged/  
Couverture endommagée
- Covers restored and/or laminated/  
Couverture restaurée et/ou pelliculée
- Cover title missing/  
Le titre de couverture manque
- Coloured maps/  
Cartes géographiques en couleur
- Coloured ink (i.e. other than blue or black)/  
Encre de couleur (i.e. autre que bleue ou noire)
- Coloured plates and/or illustrations/  
Planches et/ou illustrations en couleur
- Bound with other material/  
Relié avec d'autres documents
- Tight binding may cause shadows or distortion  
along interior margin/  
La reliure serrée peut causer de l'ombre ou de la  
distortion le long de la marge intérieure
- Blank leaves added during restoration may  
appear within the text. Whenever possible, these  
have been omitted from filming/  
Il se peut que certaines pages blanches ajoutées  
lors d'une restauration apparaissent dans le texte,  
mais, lorsque cela était possible, ces pages n'ont  
pas été filmées.
- Additional comments:/  
Commentaires supplémentaires:

- Coloured pages/  
Pages de couleur
- Pages damaged/  
Pages endommagées
- Pages restored and/or laminated/  
Pages restaurées et/ou pelliculées
- Pages discoloured, stained or foxed/  
Pages décolorées, tachetées ou piquées
- Pages detached/  
Pages détachées
- Showthrough/  
Transparence
- Quality of print varies/  
Qualité inégale de l'impression
- Includes supplementary material/  
Comprend du matériel supplémentaire
- Only edition available/  
Seule édition disponible
- Pages wholly or partially obscured by errata  
slips, tissues, etc., have been refilmed to  
ensure the best possible image/  
Les pages totalement ou partiellement  
obscurcies par un feuillet d'errata, une pelure,  
etc., ont été filmées à nouveau de façon à  
obtenir la meilleure image possible.

This item is filmed at the reduction ratio checked below/  
Ce document est filmé au taux de réduction indiqué ci-dessous.

10X	14X	18X	22X	26X	30X
<input type="checkbox"/>	<input type="checkbox"/>	<input checked="" type="checkbox"/>	<input type="checkbox"/>	<input type="checkbox"/>	<input type="checkbox"/>
12X	16X	20X	24X	28X	32X

The copy filmed here has been reproduced thanks to the generosity of:

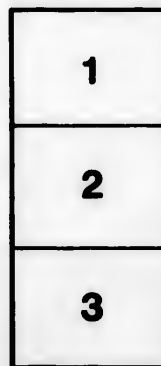
Library of the Public  
Archives of Canada

The images appearing here are the best quality possible considering the condition and legibility of the original copy and in keeping with the filming contract specifications.

Original copies in printed paper covers are filmed beginning with the front cover and ending on the last page with a printed or illustrated impression, or the back cover when appropriate. All other original copies are filmed beginning on the first page with a printed or illustrated impression, and ending on the last page with a printed or illustrated impression.

The last recorded frame on each microfiche shall contain the symbol  $\rightarrow$  (meaning "CONTINUED"), or the symbol  $\nabla$  (meaning "END"), whichever applies.

Maps, plates, charts, etc., may be filmed at different reduction ratios. Those too large to be entirely included in one exposure are filmed beginning in the upper left hand corner, left to right and top to bottom, as many frames as required. The following diagrams illustrate the method:



L'exemplaire filmé fut reproduit grâce à la générosité de:

La bibliothèque des Archives  
publiques du Canada

Les images suivantes ont été reproduites avec le plus grand soin, compte tenu de la condition et de la netteté de l'exemplaire filmé, et en conformité avec les conditions du contrat de filmage.

Les exemplaires originaux dont la couverture en papier est imprimée sont filmés en commençant par le premier plat et en terminant soit par la dernière page qui comporte une empreinte d'impression ou d'illustration, soit par le second plat, selon le cas. Tous les autres exemplaires originaux sont filmés en commençant par la première page qui comporte une empreinte d'impression ou d'illustration et en terminant par la dernière page qui comporte une telle empreinte.

Un des symboles suivants apparaîtra sur la dernière image de chaque microfiche, selon le cas: le symbole  $\rightarrow$  signifie "A SUIVRE", le symbole  $\nabla$  signifie "FIN".

Les cartes, planches, tableaux, etc., peuvent être filmés à des taux de réduction différents. Lorsque le document est trop grand pour être reproduit en un seul cliché, il est filmé à partir de l'angle supérieur gauche, de gauche à droite, et de haut en bas, en prenant le nombre d'images nécessaire. Les diagrammes suivants illustrent la méthode.

A

Bein  
Yea

Cal

10

Con

sal

tb

V

In

AN  
**ALMANACK,**

FOR THE YEAR OF OUR LORD

**1830;**

Being the second after Bissextile or Leap Year, and the Tenth  
Year of the Reign of His Most Gracious Majesty, GEORGE IV.

*Calculated for the Meridian of Hallowell, (Me.)*

BUT WILL SERVE WITHOUT ANY ESSENTIAL ERROR FOR  
THE PROVINCE OF NEW-BRUNSWICK.

Containing, besides various other useful articles—The Univer-  
sal Calendar—Fasts and Fests of the Church—Eclipses of  
the Luminaries—Rising and Setting of the Sun—Rising and  
Setting of the Moon—the Sun's Declination—Time of  
High Water—List of Provincial Officers—Sitting  
of Courts, &c. &c. &c.

TOGETHER WITH A CORRECT LIST OF

**MILITIA OFFICERS.**

In the Province of New-Brunswick, &c. &c.



**SAINT JOHN, N. B.**

PRINTED AND SOLD BY HENRY CHURCH, AT THE  
CORRIER OFFICE, MARKET-SQUARE.

**TO THE READER.**—The Publisher of the New-Brunswick Farmer's Almanack, for 1830, deems it proper to state in this place, that he has copied from the Maine Almanack, lately printed, the Calculations, &c. on account of their accuracy; they having been found, in several instances, to be more correct, than those, formerly calculated for our Meridian.

He has also been furnished with a "Table of the Moon's Phases," by a Gentleman of the Navy, extracted from the Nautical Almanack, with several other articles, which, it is hoped, will be interesting and useful to the Public generally. *November, 1829.*

**Names and Characters of the signs of the Zodiac.**

♈ Aries, head.	♌ Leo, heart.	♎ Sagittarius, thighs.
♉ Taurus, neck.	♍ Virgo, belly.	♏ Capricornus, knees.
♊ Gemini, arms.	♎ Libra, reins.	♐ Aquarius, legs.
♋ Cancer, breast.	♏ Scorpio, secrets.	♑ Pisces, feet.

**Names and Characters of the Aspects and Nodes.**

♋ Conjunction.	♌ Trine, 120 deg.	♎ Ascending Node.
* Sextile, 60 deg.	Vc. Quincunx, 150°	♏ Descending Node.
♊ Quartile, 90 deg	♎ Opposition, 180°	

**Names and Characters of the Planets.**

☉ The Sun.	♀ Venus.	♃ Jupiter.
☾ The Moon	♁ The Earth.	♄ Saturn.
☿ Mercury.	♂ Mars.	♆ Herschel.

**Chronological Cycles for 1830.**

Dominical Letter,.....	C	Solar Circle,.....	19
Golden number,.....	7	Roman Indiction,.....	3
Epact,.....	6	Julian Period,.....	6543

**Holidays at the Public Offices.**

1st January, New-Year's Day	29th September, Michaelmas.
2d ...	11th October.
17th March, Saint Patrick	30th November, Saint Andrew.
4th April, St. George	25th December, Christmas-day.
May, King Charles,	26th ... } Christmas
June, Saint John,	27th ... } Holidays,
July, King's Coronation,	Ash Wednesday. Good Friday.
Aug. K. Geo. IV. born.	Easter Monday, Easter Tuesday.

Notes at  
 On  
 On  
 Tw  
 Tw  
 A  
 A  
 A  
 A  
 A  
 A  
 A  
 [The  
 quarter  
 of the Y  
 of the fol  
 An U  
 Di  
 Di  
 Di  
 A blu  
 A re  
 A wh  
 A fla  
 A pe  
 A blu  
 A fla  
 A pe  
 A re  
 An  
 A w  
 A re  
 A B  
 Sh  
 In thi  
 gun be  
 penda  
 T  
 Ebb,  
 about  
 en,  
 the t  
 wind

## SIGNALS

Made at Partridge Island, and repeated at the Tower, in Charlotten, on the approach of vessels to this Harbour.

- One Ball close, for one square rigged vessel,
- One Ball half hoisted, for two ditto,
- Two Balls close, for three ditto,
- Two Balls separated, for four ditto,
- A Pendant of any colour for five ditto,
- A ditto under a Ball for six ditto,
- A ditto over a Ball half hoisted for seven ditto,
- A ditto under two Balls close, for eight ditto,
- A ditto between two Balls separate for nine, ditto,
- A flag of any colour, for ten or more ditto.

[The above are hoisted at the East or West Yard arm, according to the quarter the vessels first appear in, with the addition of a Ball at the centre of the Yard until the Rig of the vessel can be made out, when one or more of the following descriptions of colours will be hoisted at the mast head:—

- An Union Jack for a Flag Ship, with or without a squadron.
- Ditto with a red pendant over, for a two decker.
- Ditto with a blue Pendant over, for a Frigate.
- Ditto with a white ditto for a small armed vessel.
- A blue Pendant for a Merchant Ship.
- A red ditto for a Merchant Brig.
- A white ditto for a topsail schooner or sloop.
- A flag blue and white horizontally, a neutral fleet.
- A pendant white and blue, a neutral man of war.
- A blue flag, a neutral Merchant ship.
- A flag, red, white and blue, an enemy's fleet.
- A pendant, red, white and blue, an enemy's man of war.
- A red flag an enemy's merchant vessel. (tained, or a prize,
- An Union Jack, over Neutral or enemy's signals, the vessel do-
- A white flag over any signal, vessel bears a flag of truce.
- A red flag pierced white, for the Digby Packet.
- A Ball at the mast head, vessel is on shore, or in distress.

Should immediate aid be necessary guns to be fired.

In thick weather, a gun will be fired at Partridge Island, in answer to each gun heard at sea.—When a vessel requires a Pilot, her descriptive pendant will be shown at a yard arm, instead of a Ball.

### Time of going through the Falls.

**T**HE Falls are level (or still water) at about three hours and a half on the Flood, and at about two hours and a half on the Ebb, which makes it passable four times in twenty-four hours about ten or fifteen minutes each time.—No other rule can be given, as much depends on the floods in the river Saint John, and the time of high water or full sea, which is often hastened by winds, and in proportion to the height of them.



POST-OFFICE.

JOHN HOWE, Jun. Esq. Deputy Postmaster-General  
for Nova-Scotia and New-Brunswick.

*Post Masters throughout the Province.*

Charles Drury, Esquire, Saint John.

William B. Phair, Esquire, Fredericton.

Esquire, St. Andrews.

James Caie, Esquire, Miramichi.

John Wesley Weldon, Esquire, Richibucto.

Thomas Keillor, Esquire, Dorchester.

William Wiley, Esquire, Peticodiac.

John C. Vail, Esquire, Sussex Vale.

Asa Davidson, Esquire, Kingston.

Thomas Armstrong, Esquire, Saint Stephen.

T. M. De Blois, Esquire, Bathurst.

Gideon Knight, Esquire, Saint George.

MAILS.

*Arrival and Departure of the Mails at and from Saint  
John, N. B.*

MONDAY.....For Fredericton, &c. by the Nerepis, at 11, A M.  
From Fredericton, &c. by Boat, -- P M.

TUESDAY.....For St. Andrews, &c. by Land, at 10 P M  
For Fredericton, &c. by Boat, 4 P M  
From Halifax, &c by boat, — P M

WEDNESDAY...From St Andrews, &c by Land, at 12, A M  
For Halifax, miramichi, Richibucto, Dorchester,  
Sussex Vale, Kingston, &c by Land, 1 P M  
For St. Andrews and United States, by Boat, 4 P M

THURSDAY...From Fredericton and Canada. by Nerepis, 11 A M  
From Fredericton, by the Boat, — P M

FRIDAY.....For Fredericton and Canada, by Boat, 4 P M

SATURDAY...From Halifax, miramichi, Richibucto, Dorchester,  
Sussex Vale, Kingston, &c. by land, 10 A M  
For Halifax, Digby, &c. by Boat, 3 P M  
From St Andrews, &c. by Boat, — P M.

☞ Tax inland Postage on all Letters for Europe, Newfound-  
land, west-Indies, and the United States, must be paid at the rate  
of 9d. per single letter, and so in proportion to a double, treble  
packet, &c. or they cannot be forwarded.

Corrected f

Latt. 4

JANU

First 1s

Full 8s

(Last 16

○ New 24

First 3

FR

Full 7

(Last 15

○ New 22

First 1

Full 9

(Last 17

○ New 24

First 3

Full 8

(Last 1

○ New 2

First 2

Full

(Last 1

○ New 2

First 2

Full

(Last 1

○ New 2

First 2

Full

(Last

○ New

First

General

# PHASES OF THE MOON,

Corrected for this Meridian, from the "Nautical Almanack," for the Year 1830.

(SAINT JOHN, NEW-BRUNSWICK.)

Latt. 45° 15' 45" N. — Long. 66° 6' 30" W.

## JANUARY—1830.

- ) First 1st day 10h 10m A.
- Full 8th " 11 8 "
- ( Last 16 " 11 39 "
- New 24 " 0 30 "
- ) First 31 " 6 23 M.

## FEBRUARY.

- Full 7th " 3h 16m A.
- ( Last 15th " 8 4 "
- New 23d " 0 12 M.

## MARCH.

- ) First 1st " 3h 38m A.
- Full 9 " 9 7 M.
- ( Last 17 " 1 12 A.
- New 24 " 10 20 M.
- ) First 31 " 2 34 "

## APRIL.

- Full 8th " 3h 5m M.
- ( Last 16 " 2 25 "
- New 22 " 7 3 A.
- ) First 29 " 3 30 "

## MAY.

- Full 7th " 7h 38m A.
- ( Last 15 " 11 54 M.
- New 22 " 2 49 "
- ) First 29 " 6 24 "

## JUNE.

- Full 6th " 9h 55mm.
- ( Last 13 " 6 25 A.
- New 20 " 10 39 M.
- ) First 27 " 10 52 A.

## JULY.

- Full 5th " 10h 00m A.
- ( Last 12 " 11 12 "
- New 19 " 7 40 "
- ) First 27 " 4 12 "

## AUGUST.

- Full 4th " 8h 33mm.
- ( Last 11 " 3 44 "
- New 18 " 7 29 "
- ) First 26 " 9 39 "

## SEPTEMBER.

- Full 2d " 6h 14m A.
- ( Last 9 " 9 34 M.
- New 16 " 10 4 A.
- ) First 25 " 1 26 M.

## OCTOBER.

- Full 2d " 3h 33mm.
- ( Last 8 " 6 8 A.
- New 16 " 3 7 "
- ) First 24 " 5 56 "
- Full 31 " 0 54 "

## NOVEMBER.

- ( Last 7th " 6h 29mm.
- New 15 " 9 31 "
- ) First 23 " 7 20 "
- Full 29 " 10 44 A.

## DECEMBER.

- ( Last 6th " 10h 52m A.
- New 15 " 3 55 M.
- ) First 22 " 6 18 A.
- Full 29 " 9 33 M.

on.  
ws.

bucto.

Stephen.

om Saint

l, A M.

orchester,

l P M

at, 4 P M

ia, 11 A M

M

orchester,

0 A M

wfound-

the rate

e, treble

1550.

*Time of HIGH WATER, by the Moon's Age.*

Age	H.	M.	Age	H.	M.
1	0	0A	16	12	15
2	0	41	17	12	25
3	1	16	18	1	5M
4	1	51	19	1	35
5	2	30	20	2	17
6	3	15	21	3	00
7	4	7	22	3	55
8	5	10	23	5	5
9	6	28	24	6	25
10	7	45	25	7	35
11	8	45	26	8	35
12	9	40	27	9	27
13	10	25	28	10	10
14	11	5	29	10	50
15	11	30	30	11	30

EXPLANATION.  
 The Left Hand Column is the Moon's Age, and on the right, opposite to it, will be found the time of high Water.

**R U L E**

*To find the Age of the Moon.*

Take the number under the Month, and add it to the day of the month, rejecting 30, (or 29, according as it is noted in the columns,) if more than 30, and the remainder will be the Moon's Age.

Jan.	Feb.	March.	April.	May.	June.
30	29	30	29	29	30
7	8	7	8	9	11

July.	Aug.	Sept.	Oct.	Nov.	Dec.
29	30	29	30	29	30
11	13	14	15	16	17

# TABLE OF THE SUN'S DECLINATION, FOR THE YEAR 1880.

[Carefully corrected from Norrie's Epi tome.]

Days.	Jan.		Feb.		Mar.		April.		May.		June.	
	South.		South.		South.		North.		North.		North.	
	D.	M.	D.	M.	D.	M.	D.	M.	D.	M.	D.	M.
1	23	2	17	10	7	40	4	27	15	0	22	2
2	22	57	16	52	7	17	4	50	15	18	22	10
3	22	51	16	45	6	54	5	13	15	36	22	17
4	22	45	16	17	6	31	5	36	15	53	22	25
5	22	39	15	59	6	8	5	59	16	11	22	32
6	22	32	15	41	5	45	6	22	16	28	22	38
7	22	25	15	22	5	22	6	44	16	44	22	44
8	22	17	15	3	4	58	7	7	17	1	22	50
9	22	9	14	44	4	35	7	29	17	17	22	55
10	22	0	14	25	4	11	7	51	17	33	23	0
11	21	51	14	5	3	48	8	13	17	49	23	5
12	21	41	13	45	3	24	8	35	18	4	23	9
13	21	31	13	25	3	1	8	57	18	19	23	13
14	21	21	13	5	2	37	9	19	18	34	23	16
15	21	10	12	45	2	13	9	41	18	49	23	19
16	20	59	12	24	1	50	10	2	19	2	23	21
17	20	47	12	3	1	26	10	23	19	16	23	23
18	20	35	11	42	1	2	10	44	19	30	23	25
19	20	23	11	21	0	39	11	5	19	43	23	28
20	20	10	10	59	0	15	11	26	19	56	23	27
21	19	57	10	33	0	9	11	46	20	8	23	28
22	19	44	10	16	0	32	12	7	20	20	23	28
23	19	30	9	54	0	56	12	27	20	32	23	27
24	19	16	9	32	1	20	12	47	20	43	23	26
25	19	1	9	10	1	43	13	6	20	54	23	25
26	18	46	8	48	2	7	13	26	21	5	23	24
27	18	31	8	25	2	30	13	43	21	15	23	22
28	18	15	8	3	2	54	14	4	21	25	23	19
29	17	59			3	17	14	23	21	35	23	16
30	17	43			3	40	14	41	21	44	23	13
31	17	26			4	4			21	58		

n's Age.

the East hand Column is the Moon's Age, and on the right, opposite to it, will be found the time of high Water.

dd it to the recording as 0, and the

June.

30

11

Dec.

30

17

**TABLE OF THE SUN'S DECLINATION,  
FOR THE YEAR 1890.  
(Continued.)**

Days.	July.		Aug.		Sept.		Oct.		Nov.		Dec.	
	North.		North.		North.		South.		South.		South.	
	D.	M.	D.	M.	D.	M.	D.	M.	D.	M.	D.	M.
1	23	9	18	7	8	24	8	5	14	22	21	47
2	23	5	17	52	8	3	3	26	14	41	21	57
3	23	1	17	37	7	41	3	51	15	0	22	5
4	22	56	17	21	7	18	4	15	15	19	22	14
5	22	50	17	5	6	56	4	38	15	37	22	22
6	22	45	16	49	6	34	5	1	15	56	22	29
7	22	39	16	32	6	12	5	24	16	19	22	36
8	22	32	16	15	5	49	5	47	16	31	22	43
9	22	25	15	58	5	26	6	10	16	49	22	49
10	22	18	15	41	5	4	6	33	17	6	22	55
11	22	10	15	23	4	41	6	56	17	22	23	0
12	22	2	15	5	4	18	7	18	17	39	23	5
13	21	54	14	47	3	55	7	41	17	55	23	9
14	21	45	14	29	3	32	8	9	18	11	23	13
15	21	36	14	10	3	9	8	26	18	27	23	17
16	21	27	13	51	2	46	8	48	18	42	23	20
17	21	17	13	32	2	28	9	10	18	57	23	22
18	21	6	13	13	1	59	9	32	19	11	23	24
19	20	56	12	54	1	36	9	54	19	26	23	26
20	20	45	12	34	1	13	10	15	19	40	23	27
21	20	34	12	14	0	40	10	97	19	53	23	27
22	20	22	11	54	0	26	10	58	20	6	23	28
23	20	10	11	34	0	3N	11	19	20	19	23	27
24	19	58	11	14	0	21	11	40	20	31	23	27
25	19	45	10	53	0	44	12	1	20	44	23	25
26	19	32	10	32	1	8	12	22	20	55	23	24
27	19	19	10	11	1	31	12	42	21	6	23	21
28	19	5	9	50	1	55	13	9	21	17	23	19
29	18	51	9	20	2	18	13	23	21	28	23	15
30	18	37	9	8	2	41	13	43	21	38	23	12
31	18	22	8	46			14	9			23	8

**T.**  
I. T  
57m in  
N. and  
II.  
at 8h  
will be  
by the  
lander  
III.  
In the  
souther  
Os. 9° 2  
IV.  
44m. in  
great sc  
4s. 24°  
V. T  
total at  
part of  
Digit  
VI. T  
49m in  
and the  
The  
thence  
Jupiter  
to the e  
septemb  
turn (1/2  
star till

## ECLIPSES IN THE YEAR 1830.

**T**HERE will be six Eclipses in the year 1830—four of the Sun and two of the Moon, in the manner following :

I. The first will be of the Sun, February 22d day,  $\delta$  at 11h 57m in the evening ; of course invisible here, Moon's lat.  $1^{\circ} 29\frac{1}{2}'$  N. and the Sun's long.  $1^{\text{h}}. 4^{\circ} 7\frac{1}{2}'$ .

II. The second will be of the moon, March 9th day, ecliptic  $\delta$  at 8h 52m in the morning ; consequently invisible to us ; but she will be seen eclipsed  $20^{\circ}$  on her north limb, and in total darkness, by the dwellers on the northwest coast of America, and by the islanders of the Pacific, &c—the eclipse continuing 3h 54m.

III. The third will be of the Sun, march 24th day,  $\delta$  at 10h 5m in the morning ; but invisible to us by reason of the moon's great southern latitude, which will be  $1^{\circ} 17' S.$  ; and the sun's longitude,  $0^{\text{h}}. 9^{\circ} 29'.$

IV. The fourth will be of the Sun, August 18th day,  $\delta$  at 7h 44m. in the morning ; but invisible here, by reason of the moon's great southern latitude, which will be  $1^{\circ} 23' s.$  ; and the Sun's lon.  $4^{\text{h}}. 24^{\circ} 58'.$

V. The fifth will be of the moon, September 2d day, visible and total at London, and other parts of Europe, but only the latter part of it to be seen here, as follows :

Beginning of the Eclipse,	4h 11m	}	Appar. time, in the evening.
Do. of total Darkness	5 8		
Ecliptic $\delta$	5 59		
middle	5 58		
moon rises totally obscured	6 32		
End of total darkness,	6 49		
End of the Eclipse,	7 47		
Duration,	3 36		

Digits eclipsed  $21^{\circ} 40'$  on the moon's southern limb.

VI. The sixth will be of the Sun, september 16th day,  $\delta$  at 9h 49m in the evening ; therefore invisible to us ; moon's lat  $1^{\circ} 18' N.$  and the sun's long.  $5^{\text{h}}. 23^{\circ} 39'.$

### Morning and Evening Stars for 1830.

The Planet Venus ( $\rho$ ) will be Evening star till march 7th ; thence morning star till December 20th ; thence Evening star.— Jupiter ( $\mu$ ) will be morning star till July 5th ; thence evening star to the end of the year.—mars ( $\delta$ ) will be the morning star till september 19th ; thence evening star to the end of the year.—Saturn ( $\nu$ ) will be morning star till February 3d ; thence evening star till August 14th ; thence morning star to the end of the year.

1690 JANUARY HATH XXXI DAYS.

A. D. 1654.—Guericke of Magdeburg invented the air-pump; he also gave the first idea of electricity, by means of balls of sulphur; and first thought of using Torricelli's tube as a barometer.

- ▷ First Quarter 1st day, 9h. 55m. evening. s. w.
- Full Moon 8th day, 10h 53m. evening. s.
- ◁ Last Quarter 16th day, 11h. 24m. even. E.
- New Moon 24th day, 0h. 15m. evening. s.
- ▷ First Quarter 31st day 6h 8m. morning. N.

D. M.	D. W.	CALENDAR, &c.	☉ R. & S. h. m. h.	● R. & S. h. m.	○ plac.	High water. h. m.
1	Fri	Circumcision. ☉ per. <i>Cold.</i>	7 39 5	Morn	head	4 55
2	Sat	♀ se. 8 h. 23 m. <i>snow.</i>	7 39 5	0 18	head	5 45
3	SU	2d sunday after Christmas.	7 37 5	1 22	neck	6 36
4	Mo	Ali. so. 5h 47m morn.	7 37 5	2 31	neck	7 25
5	Tu	Low tides. <i>wind.</i>	7 36 5	3 39	arm	8 21
6	We	Epiphany.	7 36 5	4 43	arm	9 15
7	Th	☾ runs high ♂ rises 3h 46m m.	7 35 5	5 43	arm	10 3
8	Fri	<i>clear</i>	7 34 5	Rises.	bre.	11 1
9	Sat	☾'s latitude 3° 58' s.	7 34 5	5 28	bre.	11 53
10	SU	1st sunday after Epi, mid tides.	7 33 5	6 28	hert.	Morn
11	Mo	7* s. so. 8h 5m <i>hard frost.</i>	7 32 5	7 29	hert.	0 43
12	Tu	☽ rises 6 hours 32 minutes.	7 31 5	8 30	bely	1 31
13	We	Day br 5 42 twi. ea 6 13 ♀ ♂ ♄	7 30 5	9 27	bely	2 16
14	Th	☽ ☽	7 30 5	10 25	bely	3 0
15	Fri	Aliot. so. 5h m ☾ apogee.	7 29 5	11 22	rein	3 43
16	Sat	Quite Low Tides <i>very sharp</i>	7 28 5	Morn	rein.	4 36
17	SU	2d sunday after Epip.	7 27 5	0 20	secr.	5 9
18	Mo		7 26 5	1 20	secr.	5 52
19	Tu	☾'s ☽ 22° 3' in. ☿	7 25 5	2 17	secr	6 36
20	We	Feb. ☉ en ☽ 7h 2m	7 24 5	3 15	thig	7 24
21	Th	Agn ☾ runs low.	7 23 5	4 13	thig	8 14
22	Fri	Vinc. ♀ se 8h 31m <i>a snow</i>	7 21 5	5 11	kne	9 8
23	Sat	☾'s lat 4° 15' N <i>storm.</i>	7 20 5	6 2	kne	10 2
24	SU	3d sun after Epi. sir. so. 10h 9m	7 19 5	Sets.	leg	10 58
25	Mo	Con of st. Paul. ♃ rises 5h 31' m	7 18 5	6 16	leg	11 55
26	Tu	♄ ☽ ☉ <i>storm</i>	7 17 5	7 28	feet	ev. 50
27	We	♀ gr elong. ☾ in. ☿ High tides.	7 16 5	8 39	feet	1 45
28	Th	Ali. so 4h 5m m ☾ p.	7 15 5	9 52	head	2 30
29	Fri	Spica ri. 11h 5m Geo IV or 1820	7 14 5	11 4	head	3 33
30	Sat	☾'s lat 3° 40' s. Chs L beh 1649	7 12 5	Morn	neck	4 26
31	SU	4th sunday after Epiphany	7 11 5	0 14	neck	5 18

F  
A. D. 1  
1  
10  
10  
●  
○  
D. M. | D. W. |  
1 Mo |  
2 Tu |  
3 We |  
4 Th |  
5 Fri |  
6 Sat |  
7 SU |  
8 Mo |  
9 Tu |  
10 We |  
11 Th |  
12 Fri |  
13 Sat |  
14 SU |  
15 Mo |  
16 Tu |  
17 We |  
18 Th |  
19 Fri |  
20 Sat |  
21 SU |  
22 Mo |  
23 Tu |  
24 We |  
25 Th |  
26 Fri |  
27 Sat |  
28 SU |

# FEBRUARY HATH XXVIII DAYS. 1830

- A. D. 1057.—Malcolm 3d killed the tyrant Macbeth at Dunsinnan.  
 1061 Surnames appointed to be taken in Scotland by the Parliament.  
 1065 The Turks took Jerusalem from the Saracens.  
 1070 The feudal Law introduced into England.  
 1075 The Emperor Henry 4th walked barefooted to the Pope, in January.

- Full Moon 7th day, 3h. 3m. evening. E.
- ☾ Last Quarter 15th day, 7h. 49m. evening, N. E.
- New Moon 22d day, 11h. 57m. evening. N.

e also gave  
 rat thought

S. W.  
 S.  
 E.  
 S.  
 N.

High water.  
 h. m.

head 4 55  
 head 5 45  
 neck 6 36  
 neck 7 23  
 arm 8 21  
 arm 9 15  
 arm 10 8  
 ore. 11 1  
 ore. 11 53  
 hert. Morn  
 hert. 0 43  
 bely 1 31  
 bely 2 16  
 rein 3 0  
 rein. 3 43  
 secr. 4 26  
 secr. 5 9  
 secr. 5 52  
 secr 6 36  
 thigh 7 24  
 thigh 8 14  
 kne 9 8  
 kne 10 2  
 leg 10 58  
 leg 11 55  
 feet ev. 50  
 feet 1 45  
 head 2 39  
 head 3 33  
 neck 4 26  
 neck 5 18

D. M.	D. W.	CALENDAR, &c.	☉ R. & S.		● R. & S.		Plac	High water h. m.
			h. m.	h. m.	h. m.	h. m.		
1	Mo	♀ se 8h 23m <i>cold and</i>	7	9	1	21	neck	6 10
2	Tu	Purification of V Mary, ♀ sta.	7	8	2	26	arm	7 3
3	We	♂ ♀ ☉ ♀'s lat 5° 7' s. ♀ r h	7	7	3	28	arm	7 53
4	Th	Low tides,	7	6	4	22	bre	8 48
5	Fri	Aga 7* s so 6h 21m	7	5	5	12	bre	9 39
6	Sat	<i>stormy</i>	7	3	5	56	hart	10 27
7	SU	septu. sun ♂ rises 3h 21m morn	7	2	5	Rises.	hart	11 16
8	Mo	sirius south 9h 9m	7	1	5	6 11	bely	Morn
9	Tu	♂ south 11h 35m <i>clear</i>	6	59	6	7 10	bely	0 3
10	We	♀ in Ω mid tides <i>and milder</i>	6	58	6	8 8	bely	0 47
11	Th	Ali. so. 3h 9m m ♀ inf ♂ ☉	6	56	6	9 7	rein	1 31
12	Fri	♀ Apogee	6	55	6	10 5	rein	2 14
13	Sat	Day brk 5h 11m twi end 6h 49m	6	53	6	11 4	rein	2 53
14	SU	sexu sun. Valentine's Day. ♀ stat	6	52	6	Morn	secr	3 43
15	Mo	♀'s lat 4° 51' N.	6	51	6	0 1	secr	4 29
16	Tu	Arcturus ri 8h 40m <i>fair</i>	6	49	6	0 59	chi	5 11
17	We	♀ Ru. low	6	48	6	1 55	chi	6 3
18	Th	☉ ent ♀ 9h 42m eve <i>sharp</i>	6	46	6	2 51	kne	6 53
19	Fri	Low tides ♀ se 7h 32m	6	45	6	3 46	kne	7 47
20	Sat	<i>hard frosts</i>	6	44	6	4 35	kne	8 41
21	SU	Qu sun ♀ ♂ ♀ ♀ ris 4h 5m m	6	42	6	5 22	leg	9 36
22	Mo	☉ Eclipsed invisible.	6	41	6	Sets.	leg	10 32
23	Tu	shrove Tuesday. <i>mild.</i>	5	39	6	6 17	feet	11 29
24	We	Ash wednesday. m ♀ ♀ perigee	6	38	6	7 33	feet	ev 26
25	Th	Ali south 2h 15m	6	36	6	8 48	head	1 22
26	Fri	High tides ♂ south 10h 24m.	6	35	6	10 2	head	2 18
27	Sat	♀'s lat 4° 23' s <i>rain and thaw.</i>	6	33	6	11 13	nek	3 14
28	SU	1st sunday in Lent reg. s 11h 13m	6	31	6	Morn.	nek	4 10



1830

MARCH HATH XXXI DAYS.

A. D. 1655.—One of Saturn's satellites observed by Huygens.  
 1656. First stocking-weaving manufactory established by John Hindrad.

- ▷ First Quarter 1st day, 3h. 23m evening. S. E.
- Full Moon 9th day, 8h, 52m. morning. N. W.
- ◐ Last Quarter 17th day, 0h. 57m. evening. W.
- New Moon 24th day, 10h. 5m. morning. S. E.
- ▷ First Quarter 31st day, 2h. 18m. morn. N. W.

D. W.	D. M.	CALENDAR, &c.	R. & S h. m. h	● & S h. m.	⊙ Plac	High water h. m.
1	Mo	Day ☾'s lat 5°16' s. <i>changeable</i>	6 29 6	0 20	arm	5 3
2	Tu	<i>with rain or snow.</i>	6 29 6	1 23	arm	5 56
3	We	☾ runs high	6 26 6	2 21	bres	6 49
4	Th	Low tides	6 25 6	3 19	bres	7 40
5	Fri	♂ rises 3h 1m morn <i>mild for the</i>	6 24 6	3 57	hart	8 23
6	Sat	♂ pi. rises 8h 46m <i>season.</i>	6 23 6	4 38	hart	9 15
7	SU	2d sunday in Lent ♀ inf 6 ☺	6 21 6	5 13	hart	10 1
8	Mo	Alioth south 1h 34m morn	6 20 6	5 45	bely	10 44
9	Tu	☾ Eclipse invisible ☾ in Ω	6 18 6	Rises.	bely	11 23
10	We	♀ gr elong ½ south 9h 37m	6 16 6	7 3	reins	Morn
11	Th	☾ ap ♀ ris 3h 9m morn.	6 15 6	3 0	rain.	0 12
12	Fri	Mid tides. <i>rain or snow</i>	6 13 6	8 58	reins	0 55
13	Sat	Regulus so 10h 25m	6 12 6	9 57	se P	1 40
14	SU	3d sun in lent	6 10 6	10 55	secr	2 26
15	Mo		6 9 6	11 52	thig	3 12
16	Tu	☾'s lat 5' 17½' N.	6 7 6	Morn	thig	4 1
17	We	☾ runs low. <i>rain.</i>	6 5 6	0 47	thig	4 52
18	Th	Low tides ½ so 9h 6m	6 4 6	1 40	kne.	5 41
19	Fri	Alio so. 0h 53m m ♂ 6 ♀	6 2 6	2 31	kne.	6 35
20	Sat	☺ ent ♀ 9h 53m evening <i>snow</i>	6 1 6	3 13	legs	7 29
21	SU	4th sunday in Lent	5 59 7	4 2	legs	8 23
22	Mo	serius se 1h 26m <i>or rain</i>	5 57 7	4 41	feet	9 17
23	Tu	Moon in ♄	5 56 7	5 19	feet	10 12
24	We	☺ Eclipse moon perigee	5 54 7	Sets.	head	11 8
25	Th	An B V Mary, Lady day, <i>winds</i>	5 53 7	7 44	head	ev 6
26	Fri	Very high tides, <i>cold.</i>	5 51 7	9 0	neck	1 4
27	Sat	♀ sta	5 50 7	10 13	neck	2 3
28	SU	5th sun in Lt ☾'s lat 4 deg 11m s	5 43 7	11 20	arm	3 1
29	Mo	Moon run high ½ south 8h 25m	5 47 7	Morn	arm	3 59
30	Tu	Alioth so 0h 14m morn <i>hair</i>	5 45 7	0 22	bres	4 54
31	We	♀ rises 4h 5m morn <i>variable</i>	5 43 7	1 16	bres	5 47

A. D.

D. W.  
D. M.

1 Th  
2 Fri  
3 Sat  
4 SU  
5 Mo  
6 Tu  
7 We  
8 Th  
9 Fri  
10 Sat  
11 SU  
12 Mo  
13 Tu  
14 We  
15 Th  
16 Fri  
17 Sat  
18 SU  
19 Mo  
20 Tu  
21 We  
22 Th  
23 Fri  
24 Sat  
25 SU  
26 Mo  
27 Tu  
28 We  
29 Th  
30 Fri

A. D. 1076 Justices of the Peace first appointed in England.  
 An Earthquake in England. Asia Minor, having been two years under the power of Solyman, is from this time called Turkey.

- Full Moon 8th day, 2h. 50m. morning. s. w.
- ☾ Last Quarter 16th day, 2h. 10m. morn. s. E.
- New Moon 22d day, 6h. 48m. evening. w.
- ☽ First Quarter 29th day, 3h. 15m. evening. s. E.

Place	High water
	h. m.
arm	5 3
arm	5 56
bres	6 49
bres	7 40
hart	8 23
hart	9 15
hart	10 1
bely	10 44
bely	11 28
rein:	Morn
rein:	0 12
reins	0 55
se r	1 40
secr	2 26
thig	3 12
thig	4 1
thig	4 52
knes	5 41
knes	6 35
legs	7 29
legs	8 23
feet	9 17
feet	10 12
head	11 8
head	ev 6
neck	1 4
neck	2 3
arm	3 1
arm	3 59
bres	4 54
bres	5 47

D. M.	D. W.	CALENDAR, &c.	☺ R. & S.	● R. & S.	○ Place	High water
			h. m. h. m.	h. m. h. m.		h. m.
1	Th	Lyra ri. <i>cold</i>	5 42 7	2 4	bres	6 36
2	Fri	Low tides <i>and</i>	5 40 7	2 46	hart	7 24
3	Sat	☽ ri 1h 57m morn <i>showery</i>	5 39 7	3 23	hart	8 10
4	SU	6th sun in Lent. Palm s st Amb.	5 37 7	3 56	bely	8 53
5	Mo	moon in ♀ ri 2h 30m morn	5 36 7	4 25	bely	9 35
6	Tu	☽ ☐ ☺ <i>weather grows</i>	5 35 7	4 53	bely	10 17
7	We	moon's ♀ 17 deg 55m in ♃ Capro	5 34 7	5 20	rein	10 59
8	Th	7* s set 10h 13m <i>more</i>	5 32 7	riser.	rein	11 43
9	Fri	Good Friday. <i>settled</i>	5 31 7	7 59	secr	Morn
10	Sat	Alio so 11h 30m	5 29 7	8 57	secr	0 28
11	SU	Easter Day.	5 27 7	9 54	secr	1 15
12	Mo	Easter mon. Moon lat 5d 11m N	5 26 7	10 50	thig	2 2
13	Tu	Easter Tuesday ½ sta <i>and</i>	5 24 7	11 42	thig	2 52
14	We	moon ru low ♀ rises 3h 44m mor	5 22 7	Morn	kne	3 43
15	Th	day br 3h 31m, twil ends 8h 29m	5 21 7	0 34	kne	4 36
16	Fri	½ so 7h 18m <i>milder.</i>	5 20 7	1 20	legs	5 28
17	Sat	Low tides	5 18 7	2 3	legs	6 20
18	SU	1st sunday after Easter.	5 17 7	2 44	legs	7 13
19	Mo	Alph moon in ♃	5 15 7	3 20	feet	8 6
20	Tu	☺ ent 8 10h 22m morn	5 14 7	3 57	feet	9 0
21	We	☽ rises 2h 12m morn <i>rainy.</i>	5 13 7	4 33	head	9 54
22	Th	♀ sup ☽ ● perigee	5 11 7	Sets.	head	10 50
23	Fri	St. George, moon's lat 4d 26m s	5 10 7	7 55	neck	11 49
24	Sat	Alioth so 10h 38m <i>high tides</i>	5 9 7	9 7	neck	ev 48
25	SU	2d sun after Easter, saint mark	5 7 7	10 15	arm	1 48
26	Mo	moon ru high ♀ ri 3h 26m morn	5 6 7	11 14	arm	2 47
27	Tu	<i>fine weather</i>	5 5 7	Morn	bres	3 44
28	We	☽ ☌ ☌	5 3 7	0 6	bres	4 38
29	Th	Procyon se 11h 29m. <i>for the time</i>	5 2 7	0 51	hart	5 28
30	Fri	<i>moderate</i>	5 0 7	1 29	hart	6 15

1830

MAY HATH XXXI DAYS.

A. D. 1668 Spring pocket watches invented by Huygens or Dr. Hooke. Asparagus, artichokes, cauliflowers, oranges, lemons, introduced into England about this period.

- Full Moon 7th day, 7h. 23m. evening. S. E.
- ☾ Last Quarter 15th day, 11h. 39m. morn. W.
- New Moon 22d day, 2h. 34m. morning. N. E.
- ☽ First Quarter 29th day, 6h. 9m. morning. N

D. M.	D. W.	CALENDAR, &c.	☾ R. & S.		● R. & S.		○ Plac	high water	
			h.	m.	h.	m.		h.	m.
1	Sat	saint Philip and saint James.	4	5	8	2	5	bely	7 0
2	SU	3d sund after Easter ☽ ☽ ☽ ☽ ☽	4	5	8	2	34	bely	7 42
3	Mo	Low tides (moon in ☾)	4	5	8	3	4	bely	8 24
4	Tu	♀ rises 3h 14m morn	4	5	8	3	31	rein	9 5
5	We	Bona. di 1821 ag 52, ♀ sta	4	5	8	3	57	rein	9 47
6	Th	saint John Evangelist, moon apo	4	5	8	4	27	secr	10 30
7	Fri	growing showers	4	5	8	Rises.	secr	11 15	
8	Sat	☽ ☽ ☽	4	5	8	7	54	secr	Morn
9	SU	4th sunday aft Easter, ♀ mid tides	4	4	8	8	50	thig	0 3
10	Mo	fine weather.	4	4	8	9	44	thig	0 52
11	Tu		4	4	8	10	35	kne	1 43
12	We	♀ rises 11h 33m	4	4	8	11	23	kne	2 34
13	Th	rain at	4	4	8	Morn	kne	3 27	
14	Fri	this time	4	4	8	0	7	legs	4 20
15	Sat		4	4	8	0	45	legs	5 12
16	SU	5th sun aft East. ♀ great elong	4	4	8	1	23	feet	6 3
17	Mo	windy	4	4	8	1	57	feet	6 54
18	Tu		4	3	8	2	31	hed	7 46
19	We	♀ rises 2h 51m	4	3	8	3	6	hed	8 40
20	Th	Ascension Day, holy Th. moon p	4	3	8	3	42	nek	9 34
21	Fri	☽ en ☽ 10h 40m m ♀ gr elong	4	3	8	4	22	nek	10 30
22	Sat	High tides ♀ rises 10h 52m	4	3	8	Sets.	arm	11 30	
23	SU	sunday after ascension day	4	3	8	8	59	arm	ev 30
24	Mo	rain	4	3	8	9	57	bres	1 30
25	Tu		4	3	8	10	46	bres	2 26
26	We	may be expected	4	3	8	11	30	hart	3 21
27	Th	about this time.	4	3	8	Morn	hart	4 11	
28	Fri	quite cool.	4	3	8	0	5	hart	4 59
29	Sat	moon in ☽ ♀ ris 0h 46m morn	4	2	8	0	28	bely	5 43
30	SU	Whit sunday ♀ se 11h 48m.	4	2	8	1	7	bely	6 25
31	Mo	whit monday, Low tides rain	4	2	8	1	34	rein	7 0

A. D. 10

- 
- ☾
- 
- ☽

D. M.	D. W.
1	Tu
2	We
3	Th
4	Fri
5	Sat
6	SU
7	Mo
8	Tu
9	We
10	Th
11	Fri
12	Sat
13	SU
14	Mo
15	Tu
16	We
17	Th
18	Fri
19	Sat
20	SU
21	Mo
22	Tu
23	We
24	Th
25	Fri
26	Sat
27	SU
28	Mo
29	Tu
30	We

A. D. 975 Pope Boniface deposed and banished for his crimes.  
 1086 Domesday-book finished, begun in 1080, by order of Will. from  
 a survey of all the estates in England.  
 The order of Carthusians established by Bruno.

- Full Moon 6th day, 9h. 40m. morning. N. w.
- ☾ Last Quarter 13th day, 6h. 10m. evening. N.
- New Moon 20th day, 10h. 24m. morning. s. E.
- ☽ First Quarter 27th day, 10h. 37m. even. w.

Dr. Hooke.  
 mons, intro-  
 s. E.  
 w.  
 s. E.  
 r. N

Plac	high water
	h. m.
bely	7 0
bely	7 42
bely	8 24
rein	9 5
rein	9 47
secr	10 30
secr	11 15
secr	Morn
thig	0 3
thig	0 52
kne	1 43
kne	2 34
kne	3 27
legs	4 20
legs	5 12
feet	6 3
feet	6 54
hed	7 46
hed	8 40
nek	9 34
nek	10 30
s. arm	11 30
arm	ev 30
bres	1 30
bres	2 26
hart	3 21
hart	4 11
hart	4 59
bely	5 43
bely	6 25
rein	7 6

D. M.	D. W.	CALENDAR, &c.	☺ R. & S. h. m. h.	● R. & S. h. m.	○ Pl	High water. h. m.
1	Tu	Nicomede.	4 27 8	2 0	rein	7 47
2	We	moon apogee <i>growing</i>	4 26 8	2 25	rein	8 30
3	Th	♀ stat.	4 25 8	2 56	secr	9 13
4	Fri		4 25 8	3 28	secr	9 57
5	Sat	<i>showers.</i>	4 24 8	4 2	thig	10 44
6	SU	Trinity sunday	4 24 8	Rises.	thig	11 35
7	Mo	♃ rises 9h 43m	4 23 8	8 31	thig	Morn
8	Tu	<i>changeable</i>	4 23 8	9 20	kne	0 26
9	We	mid tides	4 22 8	10 5	kne	1 19
10	Th	Regulus se 11h 33 min. <i>clear</i>	4 22 8	10 45	legs	2 12
11	Fri	saint Barn ♀ se 11h 1m.	4 22 8	11 23	legs	3 5
12	Sat	alioth south 7h 24m	4 21 8	11 57	feet	3 57
13	SU	1st sunday after trinity	4 21 8	Morn	feet	4 49
14	Mo	Day break 1h 49m, twilight end.	4 21 8	0 30	hed	5 39
15	Tu	Magna Charter 1215 [10h 11m	4 20 8	1 2	hed	6 29
16	We	Great Ec 1306 [Par. ♀ in ♄ ☺	4 20 8	1 36	nek	7 21
17	Th	moon per <i>fine weather</i>	4 20 8	2 13	nek	8 15
18	Fri	Battle waterloo, 1815	4 20 8	2 54	arm	9 11
19	Sat		4 20 8	3 40	arm	10 7
20	SU	2d sunday after Trinity <i>sultry</i>	4 20 8	Sets.	arm	11 6
21	Mo	☺ ent♂	4 20 8	8 31	bres	ev 4
22	Tu	<i>more</i>	4 20 8	9 18	bres	1 0
23	We	Mid tides ♃ ri 8h 31m	4 20 8	9 57	hart	1 53
24	Th	Birth of st John Baptist	4 20 8	10 33	hart	2 43
25	Fri	<i>showers</i>	4 20 8	11 2	bely	3 31
26	Sat	♄ in ♏ ♃ ri 11h 28m	4 20 8	11 32	hely	4 16
27	SU	3d sunday after Trinity <i>very</i>	4 20 8	11 58	rein	5 0
28	Mo	<i>warn</i>	4 20 8	Morn	rein	5 41
29	Tu	saint Peter moon apogee	4 21 8	0 25	rein	6 23
30	We	Low tides <i>growing</i>	4 21 8	0 54	secr	7 6

1830. JULY HATH XXXI DAYS.

A. D. 1660 The uniform dress of military men first introduced in France. Grimaldi, a Jesuit, gave the spots in the moon their present denomination.

- Full Moon 5th day, 9h. 45m. evening, s. E.
- ☾ Last Quarter 12th day, 10h. 57m. even. E.
- New Moon 19th day, 7h. 35m. evening. N. w.
- ☽ First Quarter 27th day, 3h. 57m. even. s. E.

D. M.	D. W.	CALENDAR &c.	☺		R. & S. & S. Plac	High water h. m.
			R. & S. h. m. h.	h. m.		
1	Th	☺ apogee ♀ ri 1h 54m mor fair	4 21	8 1	23 secr	7 49
2	Fri	Visitation of the bless V Mary	4 22	8 1	56 thig	8 35
3	Sat	warm	4 22	8 2	34 thig	9 23
4	SU	4th sunday after Trinity	4 22	8 3	16 thig	10 13
5	Mo	♂ ☺ ☾ r low	4 23	8	Rises. kne	11 5
6	Tu	changeable with rain	4 23	8 7	57 kne	11 59
7	We		4 24	8 8	40 legs	Morn
8	Th	High tides ½ se 9h 17m	4 24	8 9	19 legs	0 53
9	Fri	Alioth so 5h 34m morn	4 25	8 9	55 feet	1 46
10	Sat		4 26	8 10	23 feet	2 39
11	SU	5th sun after Trinity. st Barnabas	4 26	8 11	1 feet	3 31
12	Mo	♂ south 1h 25m clear	4 27	8 11	34 hed	4 23
13	Tu	spica sets 1h 7m	4 28	8	Morn hed	5 14
14	We	Moon perigee	4 28	8 0	9 nek	6 6
15	Th	Day br 2h 8m twil ends 9h 52m	4 29	8 0	48 nek	7 0
16	Fri		4 30	8 1	29 arm	7 54
17	Sat	Alioth so 5h 2m morning	4 31	8 2	17 arm	8 50
18	SU	6th sunday after Trinity	4 32	8 3	11 bres	9 46
19	Mo	♂ ri 10h 21m warm and clear.	4 33	8	Sets. bres	10 40
20	Tu		4 33	8 7	49 hart	11 35
21	We	showers	4 34	8 8	26 hart	ev 27
22	Th	magd Tides high	4 35	8 8	59 bely	1 16
23	Fri	☺ ent ♀ 5h 59m moon in ☽	4 36	8 9	29 bely	5 3
24	Sat	Alioth so 4h 34m morn	4 37	8 9	57 bely	2 48
25	SU	7th sun af Tr st jam Dog days be	4 39	8 10	24 rein	8 32
26	Mo	st Anne	4 40	8 10	51 rein	4 15
27	Tu	moon apogee	4 41	8 11	20 secr	4 59
28	We	♂ ri 9h 52m very warm.	4 42	8 11	55 secr	5 42
29	Th	Antares se 1h 54m cloudy	4 43	8	Morn secr	6 27
30	Fri	Low tides.	4 44	8 0	29 thig	7 14
31	Sat	moon runs low ♀ so 9h 59m	4 45	8 1	8 thig	8 3

X

# AUGUST HATH XXXI DAYS. 1830

A. D. 1091 The Saracens in Spain, being hard pressed by the Spaniards, call to their assistance Joseph king of Morocco; by which the Moors get possession of all the Saracen dominions in Spain.

- Full Moon 4th day, 8h. 18m. morning. N. W.
- ☾ Last Quarter 11th day, 3h. 29m. morn. S. E.
- New Moon 18th day, 7h. 14m. morning. E.
- ☽ First Quarter 26th day, 9h. 24m. morn. N. E.

in France.  
 ihr present

S. E.  
 E.  
 N. W.  
 S. E.

Plac	High water h. m.	D. M.	D. W.	CALENDAR, &c.	☉		● R.		Plac	High water h. m.	
					R. & S. h. m. h.	& S. h. m.					
secr	7 49	1	SU	3th sun aft Trin Lam Da ♄ ☽	4	46	8	1	53	kne	8 54
thbig	8 35	2	Mo	Lyra so 9h 41m <i>fair</i>	4	47	8	2	45	kne	9 46
thbig	9 23	3	Tu	♀ ri 2h 1m morn	4	48	8	3	44	legs	10 39
thbig	10 13	4	We	♀ sup ♄ ☽	4	50	8	Rises.	legs	11 34	
kne	11 5	5	Th	Very high tides ♄ south 9h 38m	4	51	8	7	54	legs	Morn
kne	11 59	6	Fri	transf ☾ in ♄ <i>showers</i>	4	52	8	8	30	feet	0 29
legs	Morn	7	Sat	alieth south 3h 40m morn	4	53	8	9	4	feet	1 23
legs	0 53	8	SU	9th sunday after Tr moon per	4	54	8	9	37	hed	2 16
feet	1 46	9	Mo	♄ rises 9h 14m	4	55	8	10	12	hed	3 10
feet	2 39	10	Tu	<i>changeable</i>	4	57	8	10	48	nek	4 4
feet	3 31	11	We		4	58	8	11	30	nek	4 58
hed	4 23	12	Th	King George the IV born 1762	4	59	8	Morn	arm	5 52	
hed	5 14	13	Fri	moon runs high	5	0	7	0	16	arm	6 47
nek	6 6	14	Sat	Day bre 3h 4m Twil ends 8h	5	2	7	1	6	bres	7 42
nek	7 0	15	SU	10th sun af Trinity	5	4	7	2	1	bres	8 36
arm	7 54	16	Mo	<i>evy warm</i>	5	5	7	3	1	hart	9 29
arm	8 50	17	Tu	♄ south 8h 49m <i>rain.</i>	5	6	7	4	3	hart	10 19
bres	9 46	18	We	☽ eclipse invible 3 sta	5	7	7	Sets.	hart	11 9	
bres	10 40	19	Th	<i>clear</i>	5	9	7	7	33	bely	11 58
hart	11 35	20	Fri		5	10	7	8	2	bely	ev 44
hart	ev 27	21	Sat	Mid tides	5	11	7	8	28	rein	1 28
bely	1 16	22	SU	11th sunday aft Tr ♄ so 10h 35m	5	13	7	8	56	rein	2 12
bely	5 3	23	Mo	☽ enters ♄ 0h 23m eve <i>windy</i>	5	14	7	9	26	rein	2 57
bely	2 48	24	Tu	saint Barth, moon apogee	5	15	7	9	56	secr	3 42
rein	8 32	25	We	alieth south, 2h 32m morn	5	17	7	10	28	secr	4 47
rein	4 15	26	Th	<i>pleasant</i>	5	18	7	11	7	thbig	5 15
secr	4 59	27	Fri	Low tides	5	20	7	11	49	thbig	6 1
secr	5 42	28	Sat	saint augustine	5	21	7	Morn	thbig	6 50	
secr	6 27	29	SU	12th sun aft Tr, st John Bap beh	5	22	7	0	38	kne	7 41
thbig	7 14	30	Mo	arcturus ae 10h 59m	5	24	7	1	32	kne	8 34
thbig	8 3	31	Tu	Aquila south 9h 4m <i>rain</i>	5	26	7	2	34	legs	9 27

1830 SEPTEMBER HATH XXX DAYS.

- A. D. 1626 Printing off engravings in different colours invented.  
 1662 The Royal Society established at London by Charls 2d.  
 The air gun invented by Guter, a peasant of Nuremberg.  
 1663 First wire mill in Eng. erected at Richmond by a Dutchman.

- Full Moon 2d day, 5h. 59m. evening. E.
- ☾ Last Quarter 9th day, 9h. 19m. morning. s. E.
- New Moon 16th day, 9h. 49m. evening. N. W.
- ☽ First Quarter 25th day, 2h. 13m. morn. W.

D. M.	D. W.	CALENDAR, &c.	☉		● R.		○ High water
			R. & S.	& S.	Plac	h. m.	
			h. m.	h. m.	h. m.	h. m.	h. m.
1	We	Giles. sultry and warm	5 27 7	3 40	legs	10 21	
2	Th	● Ecl part vis ☾ in ☿	5 29 7	Rises.	feet	11 17	
3	Fri	Lyra so 7h 42m	5 31 7	7 8	feet	morn.	
4	Sat	☽ sta ● per very high tides	5 32 7	7 44	head	0 12	
5	SU	13th sunday after Trin, hot	5 33 7	8 19	head	1 8	
6	Mo	Dog days end ☽ ris 3h 13m morn	5 35 7	8 56	neck	2 4	
7	Tu	some showers	5 36 7	9 36	neck	3 0	
8	We	Nat of the birth V Mary	5 37 7	10 21	arms	3 57	
9	Th		5 39 7	11 10	arms	4 54	
10	Fri	Alioth so 1h 34m morn	5 40 7	Morn	bres	5 49	
11	Sat	clear	5 42 7	0 4	bres	6 43	
12	SU	14th sunday after Trin, low tides	5 43 7	1 2	bres	7 36	
13	Mo	☽ ☽ h high winds	5 45 7	2 2	hart	8 27	
14	Tu	Moscow burnt 1812	5 46 7	3 4	hart	9 15	
15	We	Day bre 4h 4m twil ends 7h 56m	5 48 7	4 5	bely	10 1	
16	Th	☽ ecl invisible [● in ☽	5 49 7	Sets.	bely	10 46	
17	Fri	chilly	5 51 7	6 39	rein	11 31	
18	Sat	Alioth so 1h 6m morn rain	5 52 7	7 7	rein	ev 15	
19	SU	15th sunday after Trin ☽ ☽ ☽	5 54 7	7 36	rein	0 59	
20	Mo	● apogee mid tide	5 56 7	8 5	secr	1 44	
21	Tu	changeable and	5 57 7	8 39	secr	2 30	
22	We	clear	5 59 7	9 12	thig	3 16	
23	Th	☽ ent ☽ 9h 12m morn	6 0 6	9 52	thig	4 4	
24	Fri	● runs low h ri 3h morn	6 2 6	10 37	thig	4 54	
25	Sat	☽ south 11h 33m	6 3 6	11 28	kne	6 43	
26	SU	16th sun aft Tr st Cyp storm	6 5 6	Morn	kne	6 44	
27	Mo	Alioth south 0h 33m morn	6 6 6	0 25	legs	7 26	
28	Tu	mild	6 8 6	1 28	legs	8 18	
29	We	saint michael, low tides	6 10 6	2 35	feet	9 12	
30	Th	saint jerome ☽ sta ● in ☿	6 11 6	3 48	feet	10 6	

A. D. 1830  
 D. W. 1 Fri 2 Sat 3 SU 4 Mo 5 Tu 6 We 7 Th 8 Fri 9 Sat 10 SU 11 Mo 12 Tu 13 We 14 Th 15 Fri 16 Sat 17 SU 18 Mo 19 Tu 20 We 21 Th 22 Fri 23 Sat 24 SU 25 Mo 26 Tu 27 We 28 Th 29 Fri 30 Sat 31 SU

OCTOBER HATH XXXI DAYS. 1830

A. D. 1098 The first crusade began, to recover the holy land from the infidels.  
 The order of Saint Benedict instituted.

- Full Moon 2d day, 3h. 18m. morning. s. w.
- Last Quarter 8th day, 5h. 53m. evening. N.
- New Moon 16th day, 2h. 52m. evening. s. w.
- First Quarter 24th day, 5h. 41m. even. s.
- Full Moon 31st day, 0h. 39m. evening. N.

High water  
 h. m.  
 10 21  
 11 17  
 morn.  
 0 12  
 1 8  
 2 4  
 3 0  
 3 57  
 4 54  
 5 49  
 6 43  
 7 36  
 8 27  
 9 15  
 10 1  
 10 46  
 11 31  
 ev 15  
 0 59  
 1 44  
 2 30  
 3 16  
 4 4  
 4 54  
 5 43  
 6 34  
 7 26  
 8 18  
 9 12  
 10 6

D. N.	D. W.	CALENDAR, &c.	R. & S. A. m. h. h.	R. & S. & S. m.	P. f. g.	High water h. m.
1	Fri	Remigius 2. to 6 h 10m <i>pleasant</i>	6 13 6	5 2	feet	11 0
2	Sat	☐ ☺	6 14 6	rises.	head	11 57
3	SU	17th sunday after Trinity	6 16 6	6 39	head	morn.
4	Mo	● per <i>grows.</i>	6 17 6	7 40	neck	0 54
5	Tu	<i>chilly</i>	6 19 6	8 24	neck	1 53
6	We	<i>clear</i>	6 20 6	9 13	arms	2 52
7	Th	● rn high ♀ rises 4h 41m morn	6 22 6	10 8	arms	3 52
8	Fri	<i>cool</i>	6 23 6	11 4	bres	4 50
9	Sat	saint Deny's Alioth so 11h 46m	6 25 6	morn.	bres	5 3
10	SU	18th sun af Trin h ri 2h 13m m	6 26 6	0 5	hart	6 35
11	Mo	Low tides ♂ so, 10h 27m	6 27 6	1 6	hart	7 23
12	Tu	♀ inf ♂ ☺ <i>rain</i>	6 29 6	2 8	bely	8 10
13	We		6 30 6	3 10	bely	8 55
14	Th	Areturus se 8h 17m <i>fair</i>	6 32 6	4 8	bely	9 37
15	Fri	Da br 4h 52m Tw en 7h 8m	6 34 6	5 8	reins	10 19
16	Sat	♄ st ♂ so 10h 6m [♀ ♂ ● apo	6 35 6	sets.	reins	11 1
17	SU	19th sunday after Trinity	6 37 6	6 15	secr	11 46
18	Mo	saint luke, mid tides [☾ apogee	6 38 6	6 46	secr	ev 31
19	Tu	<i>clear and</i>	6 40 6	7 20	secr	1 17
20	We	<i>cold</i>	6 41 6	7 58	thig	2 4
21	Th	Battle of Traf 1805 ♀ ♂ ♀ ♀ sta	6 43 6	8 39	thig	2 52
22	Fri	Alioth so 10h 58m	6 44 6	9 27	knee	3 42
23	Sat	☽ en m 5 h 23m eve <i>snow</i>	6 46 6	10 21	knee	4 33
24	SU	20th sun aft Trini ♂ so 9h 36m	6 47 6	11 19	knee	5 24
25	Mo	saint Crispin	6 48 6	morn.	legs	6 14
26	Tu	<i>clear</i>	6 50 6	0 23	legs	7 5
27	We	● in ☽ low tide <i>and mild</i>	6 51 6	1 29	feet	7 56
28	Th	saint Augustine ♂ ♂ ● ♀ grelon	6 52 6	2 39	feet	8 49
29	Fri	serius rises 11 h 26m <i>cold and</i>	6 54 6	3 54	head	9 43
30	Sat	☽ ☽ ☺ <i>squally</i>	6 55 6	5 10	head	10 37
31	SU	21st sunday after Trinity	6 57 6	rises.	neck	11 37



# 1850 NOVEMBER HATH XXX DAYS.

A. D. 1665 First "Journal des Savans" published in France by Bello in the name of Houdeville, his footman.  
 1665 French Academy of Sciences instituted. The Academy in 1699.  
 1697 Manufactory of tapestry by the King.

- ( Last Quarter 7th day, 5h. 14m. morning. N.
- New Moon 15th day, 9h. 16m. morning. S. E.
- ) First Quarter 23d day, 7h. 5m. morning. N.
- Full Moon 29th day, 10h. 29m. morning. N.

D. M.	D. W.	CALENDAR, &c.	R. & S. h. m.	S. & S. m.	Place	High water h. m.	D. M.	D. W.
1	Mo	All saints ♀ rises 5h 50m morn	6 58	6 16	neck	morn.	1	We
2	Tu	<i>snow or rain</i>	7 0	7 7	arm	0 38	2	Th
3	We	Very high tides	7 1	7 59	arm	1 39	3	Fri
4	Th	<i>clear and cold</i>	7 3	8 57	bres	2 39	4	Sat
5	Fri	serius rises 10h 59m <i>snow</i>	7 4	9 57	bres	3 38	5	SU
6	Sat	Leon at air se 11h 31m	7 5	11 0	hart	4 33	6	Mo
7	SU	22d sunday after Trinity	7 6	2 morn.	hart	5 24	7	Tu
8	Mo	<i>high winds</i>	7 7	5 0	bely	6 12	8	We
9	Tu	Alioth so 9h 48m ● in Ω	7 8	5 1	4 bely	6 58	9	Th
10	We	Quite low tides	7 10	5 2	4 bely	7 40	10	Fri
11	Th	saint martin	7 11	5 3	3 rein	8 29	11	Sat
12	Fri	Andromeda so 8h 49m	7 13	5 4	2 rein	9 3	12	SU
13	Sat	● apoge ♀ se 8h 12m <i>cold and</i>	7 14	5 4	59 secr	9 45	13	Mo
14	SU	23d sun aft Trinity ♂ so 9h 25m	7 15	5 5	59 secr	10 28	14	Tu
15	Mo	Day br 5h 30m Twil end 6h 30m	7 16	5	sets secr	11 19	15	We
16	Tu	<i>stormy</i>	7 17	5 5	57 thig	ev 3	16	Th
17	We	mid reg ri 11h 33m <i>clear</i>	7 18	5 6	37 thig	0 49	17	Fri
18	Th	Alioth south 9h 11m	7 19	5 7	22 knee	1 36	18	Sat
19	Fri		7 20	5 8	15 knee	2 24	19	SU
20	Sat	7 * s so 11h 53m <i>a cold</i>	7 22	5 9	9 knee	3 13	20	Mo
21	SU	24th sund af Tr ♀ ♂ ♀ <i>rain</i>	7 23	5 10	9 legs	4 2	21	Tu
22	Mo	☉ ent ♀ 1h 58m eve.	7 24	5 11	12 legs	4 51	22	We
23	Tu	saint Clement ● in ♀	7 25	5	morn feet	5 42	23	Th
24	We	<i>blustering weather</i>	7 26	5 0	20 feet	6 33	24	Fri
25	Th	Catherine, ♂ ♂ ●, ♀ ri 11h 28m	7 27	5 1	29 head	7 25	25	Sat
26	Fri	Low tides <i>snow</i>	7 28	5 2	39 head	8 20	26	SU
27	Sat	Alioth south 8h 33m	7 29	5 3	54 neck	9 16	27	Mo
28	SU	advent sunday	7 30	5 5	2 neck	10 13	28	Tu
29	Mo	moon pe <i>a snow storm</i>	7 30	5	rises arms	11 14	29	We
30	Tu	saint Andrew, high tide <i>expected</i>	7 31	5 5	36 arms	morn	30	Th
							31	Fri

# DECEMBER HATH XXXI DAYS. 1830

D. 1201 Records of public acts first regularly kept in England, by order of Henry 1st.

Edgar Atheling, the last of the Saxon Princes, died.

- ☉ Last Quarter 6th day, 10h. 37m. evening. N. E.
- ☾ New Moon 15th day, 3h. 40m. morning. N. E.
- ☽ First Quarter 22d day, 6h. 3m. evening. S.
- Full Moon 29th day, 9h. 3m. morning. N. W.

O	High water	D.	D.	CALENDAR, &c.	☉		● R.		O	High water
					R. & S.	& S.	plac	h. m.		
Place	h. m.	M.	W.		h. m. h.	h. m.	h. m.	h. m.	h. m.	
neck	morn.	1	We	☉ runs high & rises 7h 7 m mor	7 32 5	6 33	bres	0 14		
arm	0 33	2	Th	7* <sup>a</sup> so 11h 2m signs of	7 33 5	7 33	bres	1 12		
arm	1 39	3	Fri	♀ sup & ☉	7 34 5	8 38	bres	2 9		
ores	2 39	4	Sat	Lyra se 11h 16m snow	7 34 5	9 42	hart	3 3		
ores	3 38	5	SU	2d sun in adv ♃ se 7h 1m	7 35 5	10 4	hart	3 53		
hart	4 33	6	Mo	blustering weather	7 36 5	11 47	bely	4 40		
hart	5 24	7	Tu		7 36 5	morn	bely	5 26		
bely	6 12	8	We	Conc of ♁ v ♃ ♄ ri 10h 26m	7 37 5	0 46	reins	6 10		
bely	6 58	9	Th	very cold	7 37 5	1 47	reins	6 54		
rein	7 40	10	Fri	low tides ♄ so 7h 10m	7 38 5	2 44	reins	7 37		
rein	8 29	11	Sat	♃ lioth so 7h 32m moon apc	7 38 5	3 42	secr	8 20		
secr	9 45	12	SU	3d sun in advent ♄ sta very	7 38 5	4 40	secr	9 5		
secr	10 28	13	Mo	blustering	7 39 5	5 37	thig	9 51		
ev	11 19	14	Tu		7 39 5	6 32	thig	10 38		
thig	0 49	15	We	Day br 5h 48m twil end 6h 12m	7 39 6	sets	thig	11 25		
knee	1 36	16	Th		7 40 5	5 58	knee	ev 13		
knee	2 24	17	Fri	mid ♄ so 6h 51h very cold	7 40 5	6 53	knee	1 2		
legs	3 13	18	Sat	Tid ♄ ri 9h 42m	7 40 5	7 52	legs	1 51		
legs	4 2	19	SU	4th sunday in advent	7 40 5	8 53	legs	2 39		
feet	5 42	20	Mo	♀ sup & ☉, ● in ♃ snow	7 40 5	9 57	feet	3 27		
feet	6 53	21	Tu	storm	7 40 5	11 3	feet	4 15		
head	7 25	22	We	☉ ent ♃ 2h 29m morn	7 40 5	morn	feet	5 5		
head	8 20	23	Th	Regulus ri 8h 57m blustering	7 40 5	0 13	head	5 56		
neck	9 16	24	Fri	♃ lioth south 6h 35m	7 40 5	1 23	head	6 43		
arms	11 14	25	Sat	Christmas Day	7 40 5	2 34	neck	7 44		
arms	morn	26	SU	1st sund after Christmas, st steph	7 40 5	3 46	neck	8 41		
		27	Mo	saint john ● per	7 40 5	4 59	arm	9 42		
		28	Tu	very cold	7 39 5	6 8	arm	10 43		
		29	We	moon runs high snow	7 39 5	rises	bres	11 41		
		30	Th	Quite high	7 39 5	6 3	bres	morn		
		31	Fri	silves. tides changeable.	7 39 5	7 9	hart	0 33		

---

---

## Province of New-Brunswick.

His Excellency Major-General Sir HOWARD DOUGLAS,  
Lieutenant-Governor, &c. &c. &c. (in England.)

The Honorable WILLIAM BLACK, President and Com-  
mander-in-Chief, &c. &c. &c.

### HIS MAJESTY'S COUNCIL.

Hon. John Saunders, President. Hon. William Botsford,  
Lord Bishop of Nova Scotia, Ward Chipman,  
John M. Bliss, Sam. Proudfoot Hurd,  
Samuel D. Street, Harry Peters,  
Thomas Baillie, Fred. P. Robinson,  
George Shore, *Ch. Simonds*

### Officers of the Legislative Council.

William F. Odell, Esquire, Clerk.  
Xenophon Jouett, Esquire, Sergeant at Arms and Usher  
of the Black Rod.

————— Chaplain.

—●●●—  

### Principal Officers of Government.

Charles J Peters, Esquire, Attorney-General.  
Robert Parker, Esquire, Solicitor-General.  
Wm. F Odell, Esq. Secretary, Register and Clerk of the Council.  
Hon. Thomas Baillie, Commissioner of Crown Lands.  
Hon. Samuel Proudfoot Hurd, Surveyor General.  
George P. Bliss, Esquire, Receiver-General.  
Hon F R Robinson, Acting Auditor General.  
Thomas Heaviside, Esquire, Provincial Auditor.

---

### HOUSE OF ASSEMBLY.

Charles Simonds, Esquire, Speaker.

#### County of Saint John.

John R Partelow, }  
Charles Simonds, } Esquires.  
John Ward, jun. }  
Robert Parker, }

#### County of Westmorland.

Edward B Chandler, }  
Philip Palmer, } Esq'rs.  
William Crane, }  
Robert Scott, }

#### County of Charlotte.

Colin Campbell, }  
Thomas Wyer, } Esquires.  
Hugh M'Kay, }  
J N Clarke, }

#### County of York.

William Taylor, }  
John Allen, } Esquires.  
John Dow, }  
R. Ketchum, }

**King's County.**

Charles Freeze, }  
John Humbert, } Esquires.

**Queen's County.**

Thomas Gilbert, }  
C Harrison, } Esquires.

**County of Kent.**

John W Weldon, Esquire.

**County of Sunbury.**

George Hayward, }  
T O Miles, } Esquires.

**Northumberland County.**

Alexander Rankin, }  
Joseph Cunard, } Esquires.

**County of Gloucester.**

Hugh Monroe, Esquire.

**City of Saint John.**

Hugh Johnston, junior, and Thomas Barlow, Esquires.

**Officers of the House of Assembly.**

Charles P. Wetmore, Esquire, Clerk.

J<sup>r</sup> R Wetmore, Esquire, Clerk Assistant.

Henry G Clopper, Esquire, Serjeant at Arms.

Reverend James Somerville, Chaplain.

**COURT OF CHANCERY.**

His Excellency the Lieutenant-Governor, or the Commander-in-Chief for the time being, Chancellor.

The Chief Justice, and the Judges of the Supreme Court, Assessors of the Court.

William F Odell, Esquire, Clerk of the Crown in Chancery.

Hon Samuel D Street,

Neville Parker, Esq.

George F Street, Esq.

Henry Swynmer, Esq

} Masters.

Daniel Ludlow Robinson, Esq Register.

The Court of Governor and Council for hearing and determining Causes relating to Marriages & Divorce.

His Excellency the Lieutenant-Governor and the Honourable His Majesty's Council.

Henry G Clopper, Esquire, Clerk.

TERMS :—The first Tuesday in February and July.

**Supreme Court of Judicature.**

Honorable John Saunders, Chief Justice.

John M Bliss,

William Botsford, } Justices.

Ward Chipman, }

Charles S Putnam, Esquire, Clerk of the Crown.

Honorable George Shore, Clerk of the Pleas,

John T Murray, Esquire, Clerk of the Circuits : and Clerk of the Crown on the Circuits.

TERMS:—The first Tuesdays in February and May, and the second Tuesdays in July and October.

**Court of Vice Admiralty.**

Robert Parker, Esquire, Judge and Commissary.

George F Street, Esquire, Advocate-General.

William Tyng Peters, Esquire, Registrar and Scribe.

Thomas M. Hazen, Esquire, Marshall.

**Counsellors and Attornies, practising in the Province.**

FREDERICTON—Hon Samuel D Street, George F Street, George P Bliss, Daniel Ludlow Robinson, George J Dibblee, Charles S Putnam, A K S Wetmore, and C P Wetmore, Esquires.

SAINT JOHN—Charles J Peters, William Tyng Peters, Robert Parker, Henry Swymmer, John Thomas Murray, William Boyd Kinnear, Neville Parker, James Peters, junior, Francis A Kinnear, Robert F Hazen, Le Baron Hazen, Robert Robertson, junior, Horatio N H Lugin, John M Robinson, William Merritt, Moses H Perley, and Robert L Hazen, Esquires.

SAINT ANDREWS—Harris Hatch, Alfred L Street, Francis E Putnam, and Samuel Hallet Whitlock, Esquires.

MIRAMICHI—Thomas H Peters, John Anibrose S Street, William End, John Lobban, and William Carman, jr. Esquires.

DORCHESTER—Edward B Chandler, and James Stewart, Esqrs.

NON-RESIDENTS PRACTISING IN WESTMORLAND—James S Morse, and Alexander Stewart, Esquires.

ST. STEPHENS—Geo Stillman Hill, and Robert S Mowatt, Esqrs.

GAGE TOWN—T P Wetmore, Esquire.

RICHIBUCTO—John W Weldon, L C Moore, Peter Stubs, jun. and William Chandler, Esquires.

KINGSTON—William Simpson, Esquire,

SUNBURY—George W. Cleary, Esquire,

WOODSTOCK—E B Smith, Esquire,

BAY CHALEUR—Andrew Barbàrie, Esq.

**PUBLIC NOTARIES.**

William F Odell, Esquire, Public Notary in the Province of New-Brunswick.

Charles J. Peters, Esquire, do. in the City of St. John.

Harris Hatch, Esquire, do. in the Province.

Thomas H. Peters, Esquire, do. in Northumberland.

Wm. Tyng Peters, Esq. do. in the City of St. John.

Colin  
Samu  
Rober  
John  
Willi  
John  
Nevill  
H. N  
Charl  
Danie  
James  
Henr  
G. W  
Franc  
Alfred  
A. K.  
C. R.  
James  
Sylves  
John  
Rober  
Le Ba  
Willia  
Willia  
Peter  
F. E.  
Moses

Court

Willia

H  
Willia  
Charle  
Edward  
Marma

Colin Campbell, Esquire, do. in Charlotte.  
 Samuel D. Street, Esquire, ditto in the Province.  
 Robert Parker, Esquire, ditto do.  
 John T. Murray; Esquire, do. in the City of St. John,  
 William B. Kinnear, Esquire, do. do.  
 John A. S. Street, Esq. Public Notary in the Province.  
 Neville Parker, Esquire, ditto do. [John,  
 H. N. H. Lugin, Esq. in the City & County of Saint  
 Charles S. Putnam, Esq. ditto in the Province.  
 Daniel L. Robinson, Esq. do. do.  
 James Peters, Jun. Esq. ditto in the City of St. John.  
 Henry Swymmer, Esquire, ditto in the Province.  
 G. W. Cleary. Esquire, ditto ditto.  
 Francis A. Kinnear, Esquire, ditto do.  
 Alfred L. Street, Esq. ditto do.  
 A. K. S. Wetmore, Esq. ditto do.  
 C. R. Hatheway, Esquire, ditto do.  
 James Wilson, Esquire, ditto in Saint George.  
 Sylvester C. Hewes, Esq. do. in Northumberland.  
 John W. Weldon, Esq. do. ditto.  
 Robert F. Hazen, Esq. do. in the Province.  
 Le Baron Hazen, Esq. ditto.  
 William Wright, Esq. ditto.  
 William Carman, Jun. Esq. ditto.  
 Peter Stubs, Jun. Esq. ditto.  
 F. E. Putnam, Esquire, ditto.  
 Moses H. Perley, Esquire, ditto.



*Court for the Probate of Wills, and granting Administrations.*

William F. Odell, Esquire, Register for the Province.

*Surrogates and Registers.*

Honorable Samuel D. Street, Surrogate, York.

William B. Kinnear, Esquire, Surrogate,	} Saint John.
Charles Drury, Esquire, Deputy Register,	
Edward B. Chandler, Esquire, Surrogate,	} Westmorland.
Marmaduke L. Backhouse, Esq. Deputy Register,	

Harris Hatch, Esquire, Surrogate, } Charlotte.  
 Colin Campbell, Jun. Esquire, Deputy Register, }  
 H. Nase, Esq. Surrogate and Deputy Register, for King's County.  
 N. H. De Veber, Esquire, Surrogate, } Queen's County.  
 Valentine H. Peters, Esq. Deputy Register, }  
 John Hazer, junior, Esquire, Surrogate, } Sunbury.  
 N. Hubbard, Esquire, Deputy Register }  
 Thomas H. Peters, Esquire, Surrogate, } Northumber-  
 Ambrose S. Street, Esquire, Deputy Register, } land.  
 Launcelot C. Moore, Esquire, Surrogate, } Kent.  
 George Pagan, Esquire, Deputy Register, }  
 William End, Esquire, Surrogate, } Gloucester.  
 Hugh Monroe, Esquire, Deputy Register, }

—  
**HIS MAJESTY'S CUSTOMS.**

*Port of Saint John.*

Thomas Heavside, Esquire, Collector, *pro tem.*  
 H. Boyer Smith, Esq. Comptroller.  
 J. C. Kelly, Esquire, Waiter and Searcher.  
 James Walker, Esquire, Waiter and Searcher.

—

*Sub-Collectors.*..... William Hannington, Esquire, Chediac.  
 Perry Dumaresq, Esquire, Dalhousie.  
 James Sayre, Esquire, Dorchester.  
 Samuel M'Kean, Esquire, Richibucto.

—

Charles Drury, jun. Esquire, admeasurer of ships and vessels.  
 John Longmaid, Tide Surveyor.  
 William Ball, Provincial Tide Surveyor at St. John.  
 William Payne, ditto at Fredericton,  
 David W. Jack, ditto at Saint Andrews.

*Warehouse Department.*

Alexander Grant, Esquire, Warehouse Keeper at St. John.  
 T. P. Marter, Esquire, Locker at ditto.

*Port of Miramichi.*

John Wright, Esquire, Collector,  
 George Panchin, Esquire, Comptroller,  
 Isaac Paley, Esq. Admeasurer of ships and vessels.

*Port of St. Andrews.*

J. M. Spearman, Esquire, Collector.  
 J. Saunders, Esquire, Comptroller.  
 C. J. Briscoe, Esquire, Surveyor and Searcher.  
 Joseph Clarke, Esquire, Warehouse Keeper.

Thos.  
 Thoma  
 A J W  
 Moses  
 Joseph

Richard  
 Benjam

David V

De  
 Bev  
 Th  
 M  
 Bill  
 Wi  
 Joh  
 Wil  
 Dup  
 Joh

U

VISI  
 CHA

PRE  
 VIC  
 PRO  
 TRE

Publ

Thos. Edgeworth, Esq. Sub-Col. at West Isles and Campo Bello.  
Thomas Armstrong, Esquire, sub-Collector at St. Stephens.  
A J Wetmore, Esq. sub-collector at St. Georges.  
Moses Gerris, Esquire, Sub-Collector at Grand Manan.  
Joseph Baxter, Esquire, Preventive Officer of His Majesty's Customs, and Commander of the Provincial Cutter.

### PROVINCIAL REVENUE.

Richard Simonds, Esquire, Treasurer.  
Benjamin C. Chaloner, Esquire, Gauger of Dutiable Articles and Tide Surveyor at Saint John.  
David W Jack, Esq. Gauger of Dutiable Articles and Tide Surveyor at St. Andrews.

*Deputy Treasurers*—Henry G. Clopper, Esq. York County.  
Beverley Robinson, Esquire, Charlotte County.  
Thomas H Peters, Esquire, Miramichi.  
M L Blackhouse, Esquire, Sackville, }  
Bill Chappell, Esquire, Bay Verte, } Westmorland.  
William Wiley, Esquire, Petticodiac, }  
John W Weldon, Esquire, Richibucto.  
William Hannington, Esquire, Chediac,  
Dugald Stewart, Esquire, Restigouche.  
John Miller, Esquire, Bathurst.

### *University of King's College, at Fredericton.*

PATRON—The KING.

VISITOR—The Right Reverend the Lord Bishop of the Diocese.  
CHANCELLOR—His Excellency the Lieutenant-Governor;—and in his absence, His Honor the President of the Province.  
PRESIDENT—The Venerable the Archdeacon.  
VICE-PRESIDENT—The Rev. Edwii Jacob, D. D.  
PROFESSORS—{ The Rev. James Somerville, L. L. D.  
                  { The Rev. George M'Cawley, A M.  
TREASURER & CLERK.—George F. Street, Esquire.

### *Public Grammar School, in the City of Saint John.*

The Rector of Saint John, President,  
The Mayor, The Recorder,  
The Hon. Ward Chipman, }  
Charles J Peters, Esquire, } Directors.  
Thomas Paddock, Esquire, }  
Reverend George Burns, D D }  
Reverend I W D Gray, }  
Neville Parker, Esq. }  
John M Robinson, Esquire, Treasurer and Clerk.  
Mr. James Paterson, Master,



*Public Grammar School in Saint Andrews.*

Reverend Jerome Alley, President  
Colin Campbell, } Esquires, { Thomas Wyer,  
D. W. Jack, } Directors, { D S Frye,  
Reverend John Cassell, master.

*The Governor and Trustees of the Madras School,  
New-Brunswick.*

The Lieutenant Governor or Commander-in-Chief of the Province  
for the time being,

The Lord Bishop of the Diocese,

The Chief Justice,

The Members of His Majesty's Council, (not being Judges of the  
Supreme Court,)

The Speaker of the House of Assembly.

The Judge of the Admiralty,

The Mayor and Recorder of Saint John,

The Ecclesiastical Commissary of the Province,

The Rector and Church Wardens of Trinity Church in St John,

*Together with*

Reverend George Burns, D D and

William Scovil, Esquire,

Reverend Frederick Coster, Secretary,

Robert F Hazen, Esquire, Treasurer,

*St. John Church of England Sunday School Society.*

*Patron*—His Excellency the Lieutenant-Governor,

*President*—The Rector of Saint John,

*Superintendent and Secretary*—The Curate of Saint John,

*Directors*—The Churchwardens.

*Saint John District Committee of the Society for Pro-  
moting Christian Knowledge.*

His Excellency the Lieutenant-Governor, Patron,

Rev B G Gray, Rector, *President*,

Honorable William Black, } *Vice Presidents*,  
William Scovil, Esquire, }

Zalmon Wheeler, Esquire, *Treasurer*,

Reverend I W D Gray, *Secretary*.

*Terms of admission*—One guinea donation and one guinea an-  
nually—Recommendation from a member of the society.

☞ The depository of Books and Tracts in the store of Messrs  
George and William C Sears.

*New-Brunswick Auxiliary Bible Society.*

His Excellency the Lieutenant-Governor, Patron,

John M Wilmot, Esquire, President,

Charles I Peters,

Hugh Johnston,

John Ferguson,

William B Kinnear

James Simonds,

} Esquires, Vice-Presidents.

Alexander M'Leod, Esquire, Treasurer,

Mr. James Paterson, Rector of the Grammar School, Secretary,

BRANCH SOCIETIES.

*Saint Stephen*—Reverend Duncan M'Coll, President,  
Thomas Armstrong, Esquire, Vice-President,  
Aaron Upton, Treasurer,  
David A Rose, Secretary

*Waterborough*—David Palmer, Esquire, President,  
John Robertson, Esq Vice President.  
John Palmer, secretary and Treasurer,

*Sussex Vale*.—....., President,  
A C Evanson, Esquire, Treasurer,  
J R Legget, Esquire, secretary.

*Charlotte County*—His Excellency Sir Howard Douglas, Patron.  
C Campbell, Esquire, President,  
B Robinson, Esquire, Treasurer,  
Reverend A M'Lean, secretary.

*Fredericton*—W Taylor, Esquire, President,  
P Fisher, Esquire, Treasurer.  
J Taylor, junior, Esq secretary.

*Saint John Ladies' Bible Association.*

Mrs Neville Parker, President,

Mrs Ferguson, Treasurer,

Miss Wiggins, Secretary.

*Miramichi Ladies' Bible Society.*

Mrs Feabody, President,

mrs Clark, Treasurer,

mrs Thomas, secretary.

**Auxiliary Gospel Tract Society.**

11

**J. M. Wilmot, Esquire, President.**

**Mr. James Paterson, Secretary and Treasurer.**

**COMMITTEE** :—Messrs. T. Pettingell, A. Lawrence, C. Gibb, W. Ewing, G. Garrison, Z. Easty, R. Sears.

**HONORARY MEMBERS** :—James Taylor, Jun. Esquire, Fredericton, D. Burpe, Esquire, Sheffield, Rev. J. Craudall, Salisbury, Rev. Mr. Pickle, Norton, and Mr. J. Gooldrup, Moncton.

☞ **ALL applications for TRACTS, to be made to the Secretary, either directly, or through the medium of any of its Members.**

---

***Provincial Vaccine Establishment of New-Brunswick.***

**CENTRAL STATION—ST. JOHN.**

**His Excellency the Lieutenant-Governor, and His Majesty's Council, Patrons of the Institution.**

**His Honor the President, }  
Rev George Barns, D. D. } Directors of the Institution.**

**COMMITTEE.**

**Reverend James Somerville, and Wm. F Odell, Esq. Fredericton,  
Reverend Jerome Alley, Saint Andrews.**

**Vaccinating Surgeons.**

*Saint John*—John Boyd, Esquire, M. D.

*Fredericton*—The Medical Officer in charge of the Troops,

*Saint Andrews*—The Medical Officer in charge of the Troops.

---

***Provincial Marine Hospital for the Relief of Sick and Disabled Seamen.***

**Honorable William Black,  
Thomas Heaviside, Esquire,  
John Ward, junior, Esquire, } Commissioners.  
R M Jarvis, Esquire,  
William Scovil, Esquire, }  
John Boyd, M. D. Physician and Surgeon.**

---

***Marine Hospital.—St. Andrews.***

**Harris Hatch, Esquire,  
William Ker, Esquire, } Commissioners.  
David W. Jack, Esquire, }  
D. S. Frye, Esquire, M. D. Physician.**

Thom  
Willia  
Hono  
R W  
Noah  
Hugh

H  
T

H  
H  
Pe  
Ja  
H  
M

*Bank of New-Brunswick:*

Henry Gilbert, Esquire, President.

DIRECTORS.

Thomas Barlow,	} Esquires.	Nehemiah Merritt;
William Bowman,		Solomon Nichols,
Honorable Ward Chipman		Neville Parker,
R W Crookshank,		William Scovil,
Noah Disbrow, sen.		Charles Simonds,
Hugh Johnston,		Stephen Wiggins.

Zalmon Wheeler, Esquire, Cashier,  
Neville Parker, Esquire, Solicitor.

*City of Saint John Savings' Bank.*

His Excellency the Lieutenant-Governor, Patron,  
Thomas Heavyside, Esquire, President.

Honorable William Black,	} Vice Presidents.
„ Judge Chipman,	
Hugh Johnston, jun. Esq.	

The Bank of New-Brunswick, Treasurer.  
Cashier and Register.

*Charlotte County Bank.*

Harris Hatch, Esquire, President,

DIRECTORS.

James Douglas,	} Esqrs.	John Wilson,
James Rait,		Thomas Wyer,
John M'Allister,		James Campbell.
John M'Masters,		

*Fredericton Savings' Bank.*

His Excellency the Lieutenant-Governor, Patron,  
His Honor the Chief Justice, President,  
Peter Fraser, Esquire, Vice-President,  
James Taylor, senior, Esquire, Treasurer,  
Henry G. Clopper, Esquire, secretary.  
Mr. James F Taylor, Cashier and Register.

*Charlotte County Savings' Bank.*

Peter Stubs, Esquire, President,  
Mr. James Snell, Secretary and Treasurer.

**Saint John Marine Insurance Company.**

John Ward, junior, Esquire, President.

Thomas Barlow,	} Directors.	Charles Hazen,
William Bowman,		Hugh Johnston, jun.
Craven Calverley,		Thomas Meritt,
Robert W. Crookshank,		George D Robinson,
Thomas T Hanford,		John V. Thurgar,
David Hatfield,		Stephen Wiggins.

Thomas Heaviside, Esq. secretary,  
William B. Kinnear, Esquire, Solicitor.

**New-Brunswick Agricultural and Emigrant Society.**

His Excellency the Lieutenant-Governor, Patron,  
The Honorable Chief Justice Saunders, President,

The Honorable Judge Bliss, } Vice Presidents.  
" Judge Botsford, }

" Judge Chipman,	} Members of the Central Committee.	
" Samuel P Hurd,		
" F. P. Robinson,		
" Harry Peters,		
Peter Fraser,		John Allen,
Richard Ketchum,		Samuel Freeze,
William Crane,	Tho. O. Miles,	
Thomas Wyer,	John W Weldon,	
Hugh Munro,	Richard Simonds,	
James Miles,		

William Taylor, Esquire, secretary and Treasurer.

**Clergy of the Established Church.**

The Right Reverend JOHN, Lord Bishop of Nova-Scotia, exercising by His Majesty's Letters Patent, Episcopal Jurisdiction over the Province.

(Vacant.) ——— Archdeacon.

Rev. B G Gray, Rector of Saint John,  
 Rev. William Gray, Assistant Missionary at Saint John,  
 Rev Frederick Coster, Rector at Carleton,  
 (Vacant.) ——— Rector of Fredericton,  
 Rev G. M'Cawley, Assistant at ditto,  
 Rev Abraham Wood, Rector of Waterborough,  
 Rev Jerome Alley, Rector of Saint Andrews,  
 Rev Skeffington Thompson, I. E. D Rector of Saint Stephen,  
 Rev James Somerville, Missionary for Douglas, &c.  
 Rev Raper Milner, Rector of Mougerville,  
 Rev George Cowell, Rector of Woodstock,

Rev Samuel R Clarke, Rector of Gagetown,  
 Rev Oliver Arnold, Rector of Sussex,  
 Rev Elias Scovil, Rector of Kingston,  
 Rev Christopher Milner, Rector of Sackville,  
 Rev Gilbert L Wiggins, Rector of Westfield and Greenwich,  
 Rev Samuel Bacon, Rector of Miramichi,  
 Rev Archibald Gray, Assistant do.  
 Rev Samuel Thompson, Rector of St George,  
 (Vacant) Hampton.  
 Rev John Burnyeat, Itinerant missionary for the vacant district  
 of the Province.  
 Rev Addington D Parker, Rector of Prince William.  
 Rev Abraham Wiggins, Assistant at Kingston.  
 Rev. Richard Wiggins, Minister at Westmorland.  
 Rev Nelson Arnold, Itinerant do. at Sussex.  
 Rev Edwin Arnold, Minister at Shediac.  
 \_\_\_\_\_ (Vacant) Portland.  
 \_\_\_\_\_ (ditto) Loch Lomond.

◆◆◆◆◆

*Established Church of Scotland.*

SAINT JOHN—The Reverend George Burns, D. D.  
 SAINT ANDREWS—Reverend Alexander M'Lean.

—————

*Roman Catholic Clergy.*

Saint John—The Reverend John Carroll. Fredericton—Mr.  
 MacSweeney, Miramichi—Mr. Dollard. Saint Andrews—Mr.  
 Cummins. Richibucto—Mr. Tetreau, Nipisiguit—Mr. Ludec.  
 Caraquet—Mr. De Bellefeuille. Memramcook—Mr Gauvreau.  
 Shediac—M'Gagon—Madawaska—Mr Sirois.

—————

**Wesleyan Missionaries in New-Brunswick District.**

St. John—Rev. J B Strong and Enoch Wood, . . . Fre-  
 dericton and Sheffield, Rev. William Smithson and Michael  
 Pickles, . . . St. Stephens & St. David's, Rev. Richard Wil-  
 liams and Duncan M'Coll, Supernumerary, . . . Westmor-  
 land, Rev Sampson Busby, . . . Petticodiac, Mr. Joseph F.  
 Bent, . . . Sussex Vale, Rev William Murray, . . . Annapo-  
 lis and Digby, Rev. Albert Desbrisay, and Arthur M'Nutt.

◆◆◆◆◆

*Baptist Ministers in New-Brunswick.*

Fredericton, . . . (Vacant.) Waterbrough, . . . Rev. John  
 Marsters: Saint John . . . Rev. F W Miles. Prince Wil-  
 liam . . . Rev. Lathrop Hammond. Norton . . . Rev. Fran-

ch Pickle. Miramichi,....Rev. James Tozer. Hillsbo-  
rough....Rev. James Wallace, Hopewell....Rev. N.  
Cleveland. Wickham....Rev. Charles Lewis. Dorches-  
ter....Rev. William Sears. Salisbury....Rev. Joseph  
Crandall.

*Baptist Missionary Board.*

Rev. F. W. Miles, Chairman ; John M. Wilmot, Treas-  
urer ; James Holman, Secretary ; Henry Blakslee ; Tho-  
mas Pottingell ; Samuel Kinsman ; Joshua Bunting ; Chas.  
D. Everitt, William B. Kinnear ; George A. Garrison, and  
Zebulon Estey, Saint John.....Francis Pickle, Norton ;  
William Sears, Dorchester ; John Masters, Waterborough ;  
James Tozer, Miramichi, and Lathrop Hammond, Prince  
William.

*Commissioners for solemnizing Marriage in the several  
Counties.*

COUNTY OF YORK.

Archibald M'Lean, John Allen, Jacob Elligood, Daniel  
Morehouse, Richard Ketchum, George Morehouse, Joshua  
Brown, John Robinson, and James Harrison, Esquires.

COUNTY OF SUNBURY.

David Burps, Thomas O. Miles, John Hazen, and Ste-  
phen Peabody, Esquires.

COUNTY OF WESTMORLAND.

Rufus Smith, John Keillor, William Crane, William Scott,  
William Hannington, William Chapman, and Bill Chappel,  
Esquires.

COUNTY OF NORTHUMBERLAND.

William Abrams, Alexander Goodfellow, Donald M'Kay,  
Robert Doak, and John Campbell, Esquires.

COUNTY OF CHARLOTTE.

Hugh M'Kay, John Campbell, Daniel Owen, Tristram  
Moore, William Ross, James Allanshaw, James Chaffey,  
William Buck Cripps, and P. M'Callum, Esquires.

KING'S COUNTY.

Henry Nase, David B. Wetmore, William M'Leod, Hen-  
ry A. Scovil, John C. Vail, Joshua Upham, Isaac Perry,  
and James Brittain, Esquires.

Sa  
Gold  
How

Ge  
Esqui

Job  
Hanni

Hg  
Young

Hon  
lin Car  
Joplin,  
G. N.  
Young

John  
Inferior  
John  
Clement  
Richard  
son, Tho  
house, Jo  
mon Hau  
Justices  
Edward  
Henry  
and Infer  
Henry  
William  
Esquires,  
Richar  
ing Affid  
Henry  
C. Everi

## QUEEN'S COUNTY.

Samuel Scovll, Harry Peters, John Colwell, Stephen Golding, William Foshay, Thomas Underhill, Thomas T. Hewlett, John Earle, and John Humphrey, Esquires.

## CITY AND COUNTY OF SAINT JOHN.

Gerhardus C. Carman, John Jordan, and James Moran, Esquires.

## COUNTY OF KENT.

John Wheaton, John Jardine, John Bowser, and William Hannington, Junior, Esquires.

## COUNTY OF GLOUCESTER.

Hugh Munro, Perry Dumaresq, Robert Ferguson, John Young, and James Blackhall, Esquires.]

### *Supervisors of Great Roads.*

Honorable William Botsford, Nathaniel H. DeVeber, Collin Campbell, James A. MacLaughlan, Thomas Wyer, Wm. Joplin, John Wesley Weldon, George Anderson, Edward G. N. Scovil, Robert Doak, William Hannington, and John Young, Esquires.

---

## County of York.

John Allen, Peter Fraser, and Thomas C. Lee, Esqrs. Justices of the Inferior Court of Common Pleas.

John Allen, Peter Fraser, Thomas C. Lee, Archibald M'Lean, Peter Clements, John Bedell, Jacob Ellegood, Daniel Morehouse, Henry Smith, Richard Ketchum, James Upham, James A. M'Laughlan, Thomas Emerson, Thomas Jones, Jedediah Slason, George Minchin, George Morehouse, Josiah Brown, John Robinson, John Dibblee, James Harrison, Simon Hammond, Jacob Allen, (*of the quorum*) and Samuel Kearney, Esqrs. Justices of the Peace.

Edward W. Miller, Esquire, High Sheriff.

Henry G. Clopper, Esquire, Keeper of the Rolls and Clerk of the Peace and Inferior Court of Common Pleas.

Henry G. Clopper, Esquire, Register of Deeds and Wills.

William Taylor, John Bedell, jun. Hilkieah Kearney, and George West, Esquires, Coroners.

Richard Ketchum, and Daniel Morehouse, Esqrs. Commissioners for taking Affidavits in the Supreme Court.

Henry Smith, William Taylor, Asa Cey, John B. Payne and Thomas C. Everitt, Licenced Auctioneers.



## County of Westmorland.

Samuel Gay, Rufus Smith, John Keillor, and Benjamin Wilson, Esqrs. Justices of the Inferior Court of Common Pleas.

Samuel Gay, Rufus Smith, John Keillor, Titus Knapp, James Easterbrooks, Andrew Wheldon, Edward Dixon, John Chapman, William Crane, jun. William Hannington, James Sayre, William Scott, Philip Palmer, Christopher Milner, Malcolm Wilmot, John Smith, Bill Chappel, Humphrey Gilbert, Marmaduke L. Backhouse, Harman Trueman, Amos E Botsford, Lewis Trites, (*of the quorum*) and William Chapman, Esqrs. Justices of the Peace.

William P Sayre, Esquire, High Sheriff.

Edward B Chandler, Esq Keeper of the Rolls and Clerk of the Peace and Inferior Court of Common Pleas.

James Hughson, John Edgett and C F Allison, Esquires, Coroners.

Marmaduke L Backhouse, Esq. Register of Deeds and Wills.

Samuel Gay, Rufus Smith, John Keillor, Edward B Chandler, William Wiley, Peter Stubs, and James Stewart, Esquires, Commissioners for taking Affidavits to be read in the supreme Court; and the Justices of the Common Pleas, Commissioners for taking Bail in the same.

John Carey and Thomas Trenholm, Esqrs. Licenced Auctioneers.

## County of Charlotte.

Hugh McKay, John Campbell, Colin Campbell, Peter Stubs, Thomas Wyer, Esquires, Justices of the Inferior Court of Common Pleas.

Hugh MacKay, John Campbell, Colin Campbell, Peter Stubs, Thomas Wyer, David Owen, Daniel McMaster, Peter McCallum, Thomas Armstrong, Moses Vernon, William Frankland, William Ross, Rev. Jerome Alley, John Wilson, Tristram Moore, Patrick Clinch, William Buck Cripps, Charles R Hatheway, James Allanshaw, Beverley Robinson, Aaron Upham, (*of the quorum*) and David Mowat, Esquires, Justices of the Peace.

Elisha Andrews, Esquire, High Sheriff.

Harris Hatch, Esquire, Keeper of the Rolls and Clerk of the Peace, and Inferior Court of Common Pleas.

Donald McLauchlin, Esquire, Coroner.

Harris Hatch, Esquire, Register of Deeds and Wills.

Moses Vernon and Thomas Armstrong, Esquire, Commissioners for taking Bail in the Court of Common Pleas.

The Justices of the pleas, together with Charles R Hatheway, Joseph N. Clarke, Harris Hatch, A. L. Street, James Barber, George S. Hill, and R. S. Mowat, Esqrs. Commissioners for taking Affidavits in the Supreme Court—The Justices of the Pleas, together with Joseph N Clarke, Charles R. Hatheway, and S H Whitlock, Esquires, Commissioners for taking Bail in the Supreme Court.

Colin Campbell, jun. Peter Stubs, Thomas Armstrong, Charles R. Hatheway, and J. Abbot, Licenced Auctioneers.

## County of Sunbury.

David Burpe and Thomas O Miles, Esqrs. Justices of the Inferior Court of Common Pleas.

Elijah Miles, David Burpe, Thomas O. Miles, John Hazen, jun. Isaac Hubbard, John Hazen, Chapman Smith, Stephen Peabody, Charles F Street, Cushi Hatheway, (*of the quorum*) and Nathaniel Hubbard, Esqrs. Justices of the Peace.——John Hazen, jun. Esq. High Sheriff.

Honorable Samuel D Street, Keeper of the Rolls and Clerk of the Peace and Inferior Court of Common Pleas.——William Hazen, Esq. Coroner.

Nathaniel Hubbard, Esquire, Register of Deeds and Wills.

Isaac Hubbard, Elijah Miles, and David Burpe, Esquires, Commissioners for taking Bail in the Supreme Court.

Honorable Samuel D Street, Isaac Hubbard, Elijah Miles, David Burpe, and George W Cleary, Esqrs. Commissioners for taking Affidavits in the Supreme Court.

## County of Northumberland.

Alexander Davidson, John Fraser, and William Abrams, Esquires, Justices of the Inferior Courts of Common Pleas.

Alexander Davidson, John Fraser, William Abrams, John Clarke, John T. Williston, James Abbott, William Joplin, Alexander Goodfellow, John Wright, Lewis Henry, Christopher Clarke, Dudley Parley, John Nesmith, Donald McKay, Robert Doak, (*of the quorum*) and John Campbell, Esquires, Justices of the Peace.

Richard Samuel Clarke, Esquire, High Sheriff.

Thomas H. Peters, Esq. Keeper of the Rolls and Clerk of the Peace and Inferior Court of Common Pleas.

J. Wright, John Anderson, and J M Johnston, Esquires, Coroners.

J A Street, Esquire, Register of Deeds and Wills.

Hugh Muir and Alexander Davidson, Esquires, Commissioners for taking Bail in the Supreme Court.

Robert Ferguson, Perry Dumaresq, Samuel McKeen, Thomas Ostle, John Wheaton, and Thomas H Peters, Esquires, Commissioners for taking Affidavits in the Supreme Court.

William Davidson, Richard Samuel Clarke, Patrick Henderson, James Wright, John Bell, James Davidson, Thomas C Allan, John M Johnson, and Patrick Brannen, Esqrs. Licenced Auctioneers.

## King's County.

Henry Nase, Oliver Arnold, and David B Wetmore, Esquires, Justice<sup>s</sup> of the Inferior Court of Common Pleas.

Henry Nase, Oliver Arnold, David B Wetmore, Thomas Ketchum, Rulof Rulofson, John Smith, James Brittain, Gould Pickett, Benjamin B Crawford, Henry A Scovil, John C Vail, Isaac Perry, Alleyne C Evanson, William McLeod, John Barberie, Joshua Upham, Ebenezer Smith, Azor Hoyt, Isaac Haviland, (*of the quorum*) and John Humbert, Esquires, Justices of the Peace.——Walter Bates, Esq. High Sheriff.

William Tyng Peters, Esq. Keeper of the Rolls and Clerk of the Peace and Inferior Court of Common Pleas.

Henry Nase, David B Wetmore, George N Arnold, and William Frost, Esquires, Coroners.

Ninyon Chandler, Esq. Register of Deeds and Wills.

Honorable John Coffin and Elias Scovil, Esquires, Commissioners for taking Bail in the Supreme Court; Hon. John Coffin, Elias Scovil, and

William Simpson, Esq. Commissioners for taking Affidavits in the same.  
Caleb Wetmore, Simon Baxter, John Sheck, and William Frost, Licen-  
ced Auctioneers.

## Queen's County.

Valentine H Peters, } Esquires, Justices of the Inferior  
Samuel Scovil; } Court of Common Pleas.  
Harry Peters,

Valentine H Peters, Samuel Scovil, John Colwell, John Golding, Ri-  
chard Yeamans, Abiather Camp, Stephen Golding, William Foshay, Tho-  
mas Underhill, Thomas T Hewlett, John Earle, John Humphrey, (of  
the Quorum) and Charles Harrison, Esquires, Justices of the Peace.

Nathaniel Hubbard De Veber, Esquire, High Sheriff.

George P Bliss, Esquire, Keeper of the Rolls, and Clerk of the Peace  
and Inferior Court of Common Pleas.

Thomas Gilbert, John Earle, and Thos. T Hewlett, Esquires, Coroners.

Valentine H Peters, Esquire, Register of Deeds and Wills.

Valentine H Peters and Samuel Scovil, Esquires, Commissioners for tak-  
ing Bail and Affidavits in the Supreme Court.

Nathaniel Hubbard De Veber, Esq. Licensed Auctioneer.

## City and County of Saint John.

The Mayor and } Justices of the Mayor's Court.  
Recorder,

Lauchlan Donaldson, Benjamin L Peters, Daniel Ansley, Thomas Har-  
ding, Robert Robertson, George Bond, and William Olive, Esquires, Jus-  
tices of the Peace and of the Quorum.

James Simonds, Thomas Menzies, Hugh Johnston, John Ward, William  
Scovil, James Peters, Thomas Millidge, Ralph M Jarvis, Lewis Bliss,  
Charles Simonds, G C Carman, Zalmon Wheeler, John Jordan, Thomas  
Heavside, Peter Duffis, George H Hazen, Allan Otty, George Anderson,  
John Brown, Jun. and James Moran, Esquires, Justices of the Peace.

James White, Esquire, High Sheriff.

James Peters, Jun. Esquire, Clerk of the Peace, &c.

Alexander M'Leod, Esquire, Coroner.

Alexander M'Leod, Esquire, County Treasurer.

Charles Drury, Esquire, Register of Deeds and Wills.

Hon. William Black, Robert Parker, and Benjamin L Peters, Esquires,  
Commissioners for taking Bail in the Supreme Court.

Hon. William Black, Charles J. Peters, William Tyng Peters, Robert  
Parker, William B Kinnear, John Thomas Murray, Neville Parker, James  
Peters, jun. Henry Swymmer, Francis A Kinnear, Robert F Hazen, Le  
Baron Hazen, Robert Robertson, jun. H N H Lugin, and M H Perley,  
Esquires, Commissioners for taking Affidavits to be read in the S. Court.

## County of Kent.

John Wheaton, } Esquires, Justices of the Inferior Court  
Samuel M'Kean, } of Common Pleas.  
George Pagan,

J  
Tho  
Quo  
T  
Jo  
Peac  
Sil  
Ge  
La

Hug  
the In  
Hug  
Black  
liam F  
Henry  
Will  
Will  
Inferior  
John  
Hug  
Will

TERM  
in  
Kin  
Sun  
Que  
Cha  
Ken  
We  
Nor

The T

SAINT  
day  
YORK-  
tion  
in M

John Wheaton, Samuel M'Kean, George Pagan, George Thompson,  
Thomas Ostle, John Jardine, John Bowser, William Hannington, (of the  
Quorum) and Thomas Powell, Esquires, Justices of the Peace.

Thomas Lansdowne, Esquire, High Sheriff.

John Wesley Weldon, Esquire, Keeper of the Rolls and Clerk of the  
Peace and Inferior Court of Common Pleas.

Silvester C Hughes, Esquire, Coroner.

George Pagan, Esquire, Register of Deeds and Wills.

Launcelot C Moore, Esquire, Surrogate.

---

## County of Gloucester.

Hugh Munro, Perry Dumaresq, Robert Ferguson, Esquires, Justices of  
the Inferior Court of Common Pleas.

Hugh Munro, Perry Dumaresq, Robert Ferguson, John Miller, James  
Blackhall, Thomas N De Blois, Hugh Montgomery, Adam Ferguson, Wil-  
liam Fleming, Benjamin Davidson, John Young, (of the Quorum) and  
Henry Adams, Esquires, Justices of the Peace.

William Carman, Esquire, High Sheriff.

William End, Esquire, Keeper of the Rolls, and Clerk of the Peace and  
Inferior Court of Common Pleas.

John Anderson, Esquire, Coroner.

Hugh Munroe, Esquire, Register of Deeds and Wills.

William End, Esquire, Surrogate.

---

## COURTS OF NISI PRIUS.

TERMS :—*County and City of St. John*—2d Tuesday  
in January, and 3d Tuesday in June.

King's—4th Tuesday in January.

Sunbury—3d Tuesday in February.

Queen's—4th Tuesday in February.

Charlotte—1st Tuesday in August.

Kent—4th Tuesday in August.

Westmorland—1st Tuesday in September.

Northumberland—3d Tuesday in September.

---

*The Terms of the sittings of the Court of General Ses-  
sion, and Inferior Court of Common Pleas.*

SAINT JOHN—Third Tuesday in March, & first Tues-  
day in June, September and December.

YORK—Second Tuesday in January and June—*Addi-  
tional* Terms of the Common Pleas—third Tuesday  
in March, and second Tuesday in October.

**WESTMORLAND**—Third Tuesday in June, & second Tuesday in December—Additional Terms of the Common Pleas—first Tuesday in April & September.

**CHARLOTTE**—Second Tuesday in April, and third Tuesday in September—Additional Terms of the Common Pleas—second Tuesday in July and Dec.

**KING'S COUNTY**—First Tuesday in March and July—Additional Terms of the Common Pleas—first Tuesday in May and November.

**QUEEN'S COUNTY**—Fourth Tuesday in January and June—Additional Terms of the Common Pleas—fourth Tuesday in April and October.

**SUNBURY**—Third Tuesday in January and June—Additional Terms of the Common Pleas—fourth Tuesday in March and third Tuesday in October.

**NORTHUMBERLAND**—First Tuesday in March and August—Additional Terms of the Common Pleas—first Tuesday in June and November.

**KENT**—Third Tuesdays in January and June—Additional Terms of the Common Pleas—first Tuesday in April and September.

**GLOUCESTER**—Second Tuesday in January and June—Additional Terms of the Common Pleas—second Tuesday in April and October.

---

**LONGEVITY OF TREES.**—According to Masham, and other respected authorities, there are Trees in England, which may be supposed from the data which they furnish, to have existed a century or two before the Christian era. The celebrated Tortworth chesnut is considered not less than eleven hundred years old. In the reign of King John, more than seven hundred years ago, it was called the *old chesnut*.

**USEFUL MEMORANDA.**—London is distant from Edinburgh 395 miles S.—from Dublin 338 S. E.—Amsterdam 190 W.—Paris 225, N. N. W.—Copenhagen 610, S. W.—Vienna 320, N. W.—Madrid 860.

In the  
Ca  
Lie  
Lie  
Comm  
Deputy  
Ordn  
keeper ;  
Barra  
Royal  
Comman  
user of W  
Chapla  
G. Gray  
  
FRED.  
SAINT  
SAINT  
  
Of  
Royal Ar  
  
" Cope  
Busaco.  
" " Sa  
" " " "  
Colonel in  
Arthur,  
Wellington  
CB. & GC  
Marshall.  
Col. Comm  
Sir A F F  
CB & K  
gen.  
Lieut.-Co  
Amos G  
oreott, C  
Majo  
W Eeles.

# Staff of the Army.

In the Province of New-Brunswick, under the Command of His Excellency Major-General Sir HOWARD DOUGLAS, Bart.

Captain Charles Douglas, (3d Foot Guards) Aid-de-Camp.

Lieutenant R U Howe, (81st Foot) Extra Aid-de-Camp.

Lieutenant J. Gallagher, (H P) 98th Foot) Town Major.

**Commissariat Department.**—William H Roinson, Esquire, Assistant-Commissary General;—George Swinney and William Millikin, Esquires, Deputy Assistant Commissary Generals.

**Ordnance Department.**—F C Frith, Esquire, Deputy Ordnance Store-keeper;—Lieutenant Samuel Huyghue, Clerk.

**Barrack Department.**—J E Woolford, Esquire, Assis. Barrack Master.

**Royal Engineer Department.**—Lieutenant-Colonel George Graydon, Commanding; Mr Lionel Anderson, Clerk; Mr. Henry Hennigar, Overseer of Works.

**Chaplains.**—Fredericton (Vacant); Saint John—Reverend Benjamin G. Gray; Saint Andrews—Reverend Jerome Alley.

## GARRISONS.

FREDERICTON.—Captain Stewart, (Rifle Brigade,) Commandant.

SAINT JOHN:—Lieut. Col. Love. (H P. 52d L. Infan.) Commandant.

SAINT ANDREWS.—Lieut. Smith, (Rifle Brigade,) Commandant.

## Officers of Corps serving in New-Brunswick.

**Royal Artillery.**—Captain R. C Molesworth, Commanding.  
Lieutenant Campbell.

## RIFLE BRIGADE.

“Copenhagen.” “MonteVideo.” “Roleia.” “Vimiera.” “Corunna.”  
“Busaco.” “Barsoss.” “Fuentes d’Onor.” “Ciudad Rodrigo.” “Bada-  
joz.” “Salamanca.” “Victoria.” “Nivalle.” “Nive.” “Orthes.” “Tou-  
lous.” “Peninsula.” “Waterloo.”

Colonel in Chief. *Joseph Logan.	Wm Sullivan.	AdiWSR Norcott,
Arthur, Duke of Captains.	J R Groves.	first lieut.
Wellington, KGG*W Johnston.	Robert Walpole	Qmr *Wm Hill
CB. & GCH. field *A Stewart.	Ho. Shirley.	*Sg Ridgeway & D
marshal.	Chas F Napier	*Ass. surg. Lloyd.
*J C Hope.	W S Tollemache.	—
Col. Commanding. Thos E Kelly.	Roy Jones	Regimentals.—
Sir A F Barnard, W Warren.	2d Lieutenants. Green. Facing.	Black.
CB & KCH ma- *J Kineaid.	J Dolphin	—
rgen.	T W Smith	—
Lieut.-Colonel.	1st Lieutenants. James Martin	This mark(*)pre-
Amos Godsil R. *Jno Fry, dep pm.	Richard S Smith	fixed to the names
Norcott, C B Col.	A Machlachlin R H Fitzherbert	of Officers, denote
Majors.	W S R Norcott, ad R Wilbraham	their having been
W Eccles.	J S Cameron.	Pmr W Holden
		at Waterloo.

# Staff of the Militia.

His Excellency Major-General Sir HOWARD DOUGLAS, Bart.  
Commander-in-Chief.

Lieutenant-Colonel J. F. Love, } Inspecting Field Officers.  
Lieutenant-Colonel John Allen, }  
Honorable George Shore, Adjutant-General.  
Lieutenant R. U. Howe, Quarter-Master General.  
Lieutenant-Colonel Charles Drury, Provincial Aid-de-Camp.

## York County Militia.

### First Battalion.

#### Lieutenant-Colonel.

John Allen, 21st May, 1824

#### Major.

G. Minchin, 25th May, 1824

#### Captains.

M. Needham, (rifle) 14 June '24.

Matthew Brannen, do.

G. K. Lugin, (African) do.

G. P. Bliss, (Art.) 10 Sept. 1827.

G. F. Street, 22 November '28

E. S. Putnam 23 do.

D. L. Robinson, 24 do.

W. J. F. Winslow, 25 do.

#### Lieutenants.

Ezekiel Slood, 27 March '22.

George Garden, (rifle) 3 May, do

Peter Fisher, 30 Nov. do

William Bailey, 14 July, '24

J. Slason, (Rifle) 25 May, do

W. M'Beath, (Rifle) 25 do do

R. Dibble, (Art) 9 Jan. 26

J. Holbrook, (Art.) 10 Sept. do

A K S Wetmore (At) 22 Nov 28

B. Rainsford, 22 Nov. do

J. F. Taylor, do do

G. E. Ketchum, 25 do do

L. A Wilmot, 26 do do

H. Vavasour, 27 do do

N. Walker, (Af.) 28 do do

T. Garden, (Af.) 29 do do

JA Beckwith, 1 December, '28

W J Bedell, 2 February '29

#### Ensigns.

G. F. H Minchin, 22 Nov. '28.

H Smith, 24 do do

C W Marsh, (Afri.) 25 do do

#### Paymaster.

James Taylor, capt. 14 June '24

#### Adjutant.

T R Wetmore, Cap. 11 Sept. 26

#### Quartermaster.

G. F. S. Burton, (Lt) 22 Nov 28

#### Surgeon.

Thomas Emerson, 20 July, 18

### Second Battalion.

#### Major.

Richard Ketchum, 2 Apr. 1818

#### Captains.

John Dibblee, 9 March '16

Thomas G. Cunliffe 9 April, '18

Samuel Kearney, 9 do do

Arthur B Walsh, 25 June, '21

George Morehouse, 6 May, '22

Josiah Brown, 14 June, '24

William Dibblee, 4 April, '25

James, Ketchum, 5 April, '25

Thomas Phillips, 9 June 25

Charles Raymond, 29 July, '28

Arthur Nicholson, 29 do do

Benjamin Tibbitts 30 do do

#### Lieutenants.

John Dickenson, 4 April, 1822

Benjamin Griffith, 6 do do

Rufus Payson, 7 do do

John  
James  
Chs. M  
Elisha  
Edwar  
Elijah  
Henry  
Natha

Thom  
Rober  
Peter  
Wm. I  
Adam  
Walter  
J. N. C  
George  
William  
Charles  
Murph  
George

H Mo

\*Chas. I

John

Simon

Wm D

Abrah

V. Ha

L. R.

F. Mo

Georg

Willia

James

John

Josep

Thom

H. Cr

John

John Kearney, 9 April 1825  
 James Diagee, 9 do do  
 Chs. M'Laughlan, 10 Sept. 27  
 Elisha Cunliffe, 23 July, 23  
 Edward Turner, 29 do do  
 Elijah Sisson, 30 do do  
 Henry Dibblee, 24 Aug. '29  
 Nathaniel Stickney, 25 do

*Ensigns.*

Thomas Corey, 8 April, 1819  
 Robert Hannah, 6 do 25  
 Peter Dickenson, 7 do  
 Wm. M'Donald, 10th Sept. '27  
 Adam B. Sharp, 11th do  
 Walter D. Bedell, 23th July '28  
 J.N. C. Nicholson, 29th do  
 George Murphy, 30th do  
 William M'Kenzie, 24 Aug. '29  
 Charles Upham, 25 do.  
 Murphy Giberson, 26 do  
 George Milberry, 27 do

*Adjutant.*

H Moorehouse, capt. 14 June 24

*Quartermaster.*

\*Chas. Peabody, Lt. 23 Sept. '26

**Third Battalion.**

*Lieutenant-Colonel.*

John Allen, 21st May, 1824

*Major.*

Simon Hammond, 14 June, '24

*Captains.*

Wm Davidson, 9 March, 1816  
 Abraham Yearxa, 19th Jan. '18  
 V. Harding, 19th August, 1822  
 L. R. Coombes, 14th June, 1824  
 F. Moorehouse, 15th do  
 George Long, 2d February, '29  
 William C. Joslin, 3d do  
 James Hartley, 4th do  
 John Grant, 5th do  
 Joseph Sloat, 2d July 1829  
 Thomas Jones, (Art) 3d do  
 H. Cronkhite, 4th do  
 John Haggermah, 5th do

*Lieutenants.*

John Barker, 14th June 1824  
 William Kitchen, 3d Feb. '23  
 Enoch Dow, 5th do  
 Judah Hammond, 6th do  
 Witter Davidson, 7th do  
 Isaac Lawrence, 2d July, '29  
 John Verxa, 3d do  
 James Jones, 4th do  
 Samuel Pickard, 5th do  
 S. Lockwood, 6th do  
 Chs. Morehouse, 7th do  
 Aaron Hartt, 8th do  
 A. Hammond, 9th do  
 Daniel Parent, 10th do  
 James Tibbits, 11th do  
 Arch. Moody, 12th July '29  
 David Phillips, 13th do

*Ensigns.*

James Campbell, 7th Feb. 1829  
 Benjamin Burt, 8th do  
 D. Yerxa, jun. 2d July, do  
 James Golder, 3d do  
 Daniel Jewett, 4th do  
 James Cliff, 5th do  
 William Jones, 6th do  
 J. Christy, 7th do  
 Thomas Parent, 8th do  
 I. Ingraham, jun. 9th do  
 Edward Garden, 10th do  
 S. Cronkhite, 11th do  
 George Fox, 12th do  
 David Dow, 13th do  
 Peter Watson, 14th do

*Adjutant.*

A. Campbell, (capt) 16 July '24

*Paymaster.*

Jacob Allen, (capt.) 2d July '29

*Surgeon.*

William Caverhill, 16 April '23

*Quartermaster.*

S. Parent. (Capt) 1st June, '23

**Fourth Battalion.**

*Major.*

Peter Fraser, 17th April, 1824



*Captains.*  
 Peter Lizotte, 1st Dec. 1824  
 Anthony Bellefleur, 2d do  
 Firman Thideau, 3d do  
 Francis Violte, 4th do  
 Simon Hibert, 4th July '27

*Lieutenants.*  
 German Cere, 1st Dec. 1824  
 Xavier Cere, 2d do  
 Raphael Michaud, 3d do  
 Leon Bellefleur, 4th do  
 J Bapt. Martin, 5th do

*Ensigns.*  
 Joseph Cere, 1st Dec. 1824  
 Joseph Hebert, 2d do  
 J B Daigle, 3d do  
 Benaventure Lizotte, 4th do  
 Donomique Violette, 5th do

*Adjutant.*  
 Francis Rice, (Lt) 1st Dec 1824  
*Quartermaster.*  
 J B Souci, 1st Dec. 1824

**Fifth Battalion.**

*Ann Robinson Major.*  
 John Robertson, 22d Nov 1829

*Captains.*  
 Alexander M'Lean, 20 July, '19  
 James Miles, 2d April, 22  
 Ross Currey, 12th Dec. 29  
 Daniel Hallett, 13th do

Geo. Clemments, 14 Dec. 1828  
 Ludlow Campbell, 15th do

*Lieutenants.*  
 John M'Gibbon, 12th Dec. 28  
 Patrick Campbell, 13th do  
 Henry Henley, 14th do  
 Daniel J. Esty, 15th do  
 George Sterling, 17th do

*Ensigns*  
 Archibald M'Lean, 12 Dec 28  
 Alexander M'Gibbon, 13th do  
 Walter Sterling, 14th do  
 Charles Nevers, 15th do  
 Donald Manson, 16th do  
 Charles A. Harding, 17th do

*Adjutant.*  
 Wm Currey (capt.) 1st Jan 15  
*Quartermaster.*  
 Moses Pickard, (Lt.) 15 Dec 28

**York County Cavalry.**

*Captain.*  
 William Woodforde, 22 Nov 28  
*Lieutenants.*

Thomas L Langen, do  
 G. I. Dibblee, 24th do  
*Cornet.*  
 William H. Odell, 22d Nov 28  
*Quartermaster.*  
 J. W. Jouett, (cor.) 15 Dec 28

**Saint John City Militia.**

**First Battalion.**

*Colonel.*  
 His Excellency Major-General  
 Sir Howard Douglas, Bart.  
 Commander-in-Chief, &c. &c.  
*Lieutenant-Colonel.*  
 C. Drury, (Staff) 25th Oct. 1824  
*Major.*  
 Benjamin L. Peters, 25th do  
*Captains.*  
 John Kinnear, 8th Sept. 1821

G. D. Robinson, (ad) 19 Apr 22  
 Jas. Kirk, (quart.) 22d Aug. '25  
 William Scoullar, do  
 T. Leavitt, (african) do  
 T. Barlow, (art.) 9th Jan. 1827  
 R. W. Crookshank, 26 March do  
 Daniel Jordan, 27th do  
 Thomas Nisbet, 3d July do  
 Ezekiel Barlow, 4th do  
 John Smyth, 5th do  
 John J. Roberts, 16th 1829

4 Dec. 1928  
15th do  
2th Dec. '28  
13th do  
14th do  
15th do  
17th do  
12 Dec 28  
n, 13th do  
14th do  
15th do  
16th do  
17th do  
1st Jan 15  
15 Dec 28  
Cavalry.  
22 Nov 28  
do  
do  
22d Nov 28  
15 Dec 28  
19 Apr 22  
2d Aug. '25  
do  
do  
Jan. 1927  
6 March do  
th do  
3d July do  
4th do  
5th do  
6th 1828

### First Lieutenants.

Joe Brand, 8th September 1821  
Thomas Hanford, (Art) 3d '22  
G. Waterberry, (Art) 3d do  
M. Hennigar, 22d August '25  
Thomas L. Nicholson, do  
Edward L. Jarvis, 9th Jan. '27  
Charles Drury, 9th do  
T. M' Mackin, (R) 26 March '27  
Wm. Merritt, 27th March, do  
Noah Disbrow, 3d July do  
D J Merritt, 16th June, 1828.

### Second Lieutenants.

E. J. Budd, 20th Sept. 1824  
A. M'Grotty, 22d August, '25  
C. Longstrouth, (Af) do  
H. T. Partelow, do do  
William Y. Theal, 9th Jan. '27  
H. N. H. Lugin. 9th do  
W.O. Smith, (rf) 26th March '27  
Daniel Smith, 27th do  
John Robertson, 28th do  
Wm. Hutchinson, 3d July do  
J.W.M'Leod, (rifle) 16 June '28  
Conradt J. Hendricks, 14 sep 29

### Paymaster,

W. Bowman, (capt) 5th Dec '24

### Adjutant.

G.D. Robinson, (cap) 26 Mr. '27

### Quartermaster.

James Kirk, (Capt.) 22d Aug 25

### Surgeon.

J. Boyd, M.D. 16th Sept. '23

### Enrolling Officer.

J. O. Betts, (capt.) 3d July, '27

### Second Battalion.

### Major.

Charles Ward, 5th Dec. 1824

### Captains.

H. Flaherty, (Adj) 23d Aug. '21

R.W. Crookshank, (SF) 5 Sep. do

Thomas Smith, 5th Sep. 21  
Gregory Vanhorne, do  
Thomas Merritt, 1st July '22  
Thomas Sandall, 25th Nov. do  
Stephen Smith, 25th Aug. '28  
R. C. Minnette. do  
James T. Hanford, 5th Dec. '24  
James Reed, (S F) 23d Sep. '26  
J.V. Thurgar, (Rifle) do  
Gilbert De Blois, 20th Aug. '27

### Lieutenants.

And. Crookshank, 5th Sep 1821  
James Clarke, do  
William Vaughan, (SF) do  
Thomas Reed, do  
Benjamin Stanton, do  
William Leavitt, do  
T B Millidge, (rifle) 17 Sep. '22  
W C Sears, 5th December, '24  
C J Peters, 22d August, '25  
William Mullin, do  
W H Street, 23 September '26  
Nicholas J Brown, do  
George A Nagle, (SF) do  
Wm P Scott, (SF) do  
Hiram Smith, 20th August '27  
Jacob R Sneden, 22d do  
Charles Tisdale, 17th March '29  
John Hooper, (rifle) 18th do  
T. N. Smith, (SF.) 7th Sept do

### Ensigns.

John Wisart, 23d Sept. '28  
James Vernon, 13th June '24  
William Hughson, 17th Mar. '29  
Francis G Ward, 18th do  
E W Greenwood, 19th do

### Paymaster.

I. L. Bedell, (capt) 20th Sep '27

### Adjutant.

H. Flaherty, (capt) 25th do '21

### Quarter-Master.

Henry Chubb, (capt) 11 Sep. 21

### Surgeon.

Henry Cook, 20th August, '27

## Regiment Saint John County Militia.

### Lieutenant-Colonel.

Charles Simonds, 29 Mar. 1825

### Majors.

George Anderson, 27 April '24

A. Wedderburn, d. l. i. 1 Ju. '26

### Captains.

James Moran, 23d August '21

William G Cody, do

Jehiel Partelow, 31st do

C L Hatheway, (adjt) 11 Sep 21

John Jordan, 5 June, 22

Alexander Howard, 1 July 22

George Matthew, 17 Sept. do

Wm. Eagles, (S. Fe.) 10 May 24

G. C. Carman, 21 June 24

Daniel Vaughan, 23 do do

Archibald Menzies, 3 Aug. 24

S. Strange, (SF.) 29 March 25.

Samuel Dalton, 5 April 25

Robert Payne, 17 May 25

Wm. Black, jr (d. l. i) 25 No. 27

William Craft, 11 June do

John Cunnard, 17 Sept. do

Jas. Ketchum, (rifle) 28 July 28

Daniel Ansley, 25 October 28

Isaac Flewelling, 26 Oct. do

### Lieutenants.

John Howard, 23 August 1821

Thomas Bean, 31 Aug. do

Ephraim Sentell, 3 June 22

Abraham Bradshaw, 1 July do

John Fownes, 23 June do

J. Ponsford, (SF) 29 March 25

W. Drake, (SF) 29th March '25

J. Stackhouse, do

John Travis, 4 April 25

William Craft, 9 do 25

John Cunningham, 11 do

James Payne, 13 do 25

John Howe, (d. l. i.) 26 Mr. 27

Israel Merritt, 17 Sep. do

John Eagles, (S. F.) 19 do

George Eagles, do 19 do

Barnes Travis, 20 do

D. L. Dykeman, (rif) 28 July 28

Charles Theal, do 29 do

Joseph Ketchum, do 30 do

A. S. Hodge, 25 October 28

John Menzies, 26 do

Richard Carman, 27 do

Isaac Stephens, 28 do

### Ensigns.

George M'Lean, 23 August 21

Henry Anthony, 22 Sept do

James Swym, 20 July, 24

W. O. Cody, 6 April 25

Samuel Belyes, 7 do

C Morris Whooten, 8 do

John Menzies, 11 June 27

Thomas Cunnard, 17 Sept. do

George Vaughan, 25 Oct. 28

### Paymaster.

J. R. Partelow, (cp.) 24 Nov. 28

### Adjutant.

C. L. Hatheway, (ct.) 21 June 24

## Sunbury County Militia.

### Lieutenant-Colonel.

Thos. O Miles, 25th Oct. 1828

### Major.

T V W Clowes, 25th Oct. '28

### Captains.

James Tilley, 25th April, '20

Geo. Hayward. 3d Aug. '24

John Dow, 3d August 1824

William Hoyt, 1st Oct. '25

F A De Veber, 11th Sept 27

David Burpe, 25th Oct. '28

Edward A Miles, 26th do

John Brown, 24th August 1829

Jeremiah Tracey, 25th do

Geor  
W. B  
N Hu  
G H  
Henr  
Geor  
Char  
Lynu  
Tho.

Jerem  
A S

Hugh

Colin

David

N. M

Wm.

P. S.

Willi

Aaro

Jame

Jame

Alex

J. A

Robe

Jacob

Jacob

Thom

Josep

Geor

Wm.

Geo.

Geor

Alex

Willi

March 25  
 do  
 April 25  
 do 25  
 1 do  
 do 25  
 26 Mr. 27  
 7 Sep. do  
 18 do  
 19 do  
 20 do  
 28 July 28  
 29 do  
 30 do  
 October 28  
 do  
 do  
 do  
 August 21  
 Sept do  
 20 July, 24  
 6 April 25  
 do  
 do  
 1 June 27  
 7 Sept. do  
 25 Oct. 28  
 24 Nov. 28  
 21 June 24  
 August 1824  
 ct. '25  
 Sept 27  
 ct. '28  
 h do  
 August 1829  
 h do

*Lieutenants.*  
 George Nevers, 3d Aug 1824  
 W. Barker, 10th Sept. '27  
 N Hubbard, 11th do  
 G H N Harding, 12th do  
 Henry Loder, 25th Oct. 1828  
 George Miles, 26th do  
 Charles Hazen, 24th August '29  
 Lynus Seely, 25th do  
 Tho. Nason, jr 26th do  
*Ensigns.*  
 Jeremiah Smith, 21st Sept. 24  
 A S Hubble, 10th Sept. '27

Moses Coburn, 11th Sept. 1827  
 Wm. Easterbrooks, 12th do  
 G B Taylor, 25th Oct. 1828  
 J. Tilley, jr. 26th do  
 William Kimball, 24th Aug '29  
 John Bailey, 25th do  
 Henry Boone, 26th do  
*Adjutant.*  
 J. Hazen, (Capt.) 25th Aug, '28  
*Quarter-Master.*  
 Z B Brown, 29th March, 1825.  
*Surgeon.*  
 William Ferguson, 21st Sept '29

*Charlotte County Militia.*

First Battalion.  
*Colonel.*  
 Hugh M'Kay, 1 November 1798  
*Lieutenant-Colonel.*  
 Colin Campbell, 24 May, 1824  
*Major.*  
 David Mowatt, 5 Dec. 1824  
*Captains.*  
 N. Marks, 27 August, 1821  
 Wm. Garnett, 27 do  
 P. S. Frink, 1 June 23  
 William Porter, 2 do  
 Aaron Upton, 3 do  
 James Brown, 1 June 24  
 James Boyd, 5 Decembar, 24  
 Alexander Strachan, 5 do  
 J. Armstrong, (Art) 26 Mrc. 27  
 Robert Lindsay, (rf.) 27 do  
 Jacob Libby, 28 do  
 Jacob Young, (rf) 29 do  
 Thomas Connick, 19 May, 28  
 Joseph Connick, 2d Feb. 29  
 George Walton, 3d do.  
 Wm. Whitlock, (At.) 4th do.  
 Geo. M'Master, (S.F.) 5th do.  
*Lieutenants.*  
 George Hunter, 2 June, 23  
 Alexander Grant, 4 do  
 William Thompson, 9 do

J. Artherton, (rif.) 5 Dec. 23  
 Benjamin Bradford, do  
 Hill M'Allister, 27 March, 27  
 A. Clendenning, 28 do  
 John Rodgers, 29 do  
 George Walton, 30 do  
 J. Frink, (Art.) 31 do  
 H. Campbell, 1 April, 27  
 Wm. Armstrong, (rf.) 27 Mrc 27  
 John Stubs, 28 do  
 John Mowatt, 2d Feb. 29  
 Josephus Moore, (rf) 3d do.  
 Thomas Berry, (Art.) 4 do.  
 John Grant, 5 do.  
 Joseph Clendenning, 6 do.  
*Second Lieutenants.*  
 John Porter, 1st June, 24  
 G F Campbell, (rif) 5 Dec do  
 J H Whitlock, (rif) do  
 J Maxwell, (Art) 26 March, 27  
 James Berry, 19 May, 28  
 Richard Wilson, (rif.) do  
 Robert Watson, do do  
 John Ayman, (S F) 2d Feb 29  
 David Townsend, do. 3 do  
 Samuel H. Whitlock, 4 do  
 Joseph Hill, (rif.) 5 do  
 David Upton, 6 do

*Ensigns.*  
 James Buchanan, 1 June 23  
 Timothy Crocker, 2 do  
 George Porter, 3 do  
 Caleb Bartlett, 5 December, 24  
 Edward Wilson, 12 Sept. 25  
 Stephen Hitchings, 29 March 27  
 William Hill, 30 do  
 Thomas Connick, 1 April do  
 Robert Hutchinson, 2 do  
 Joseph Walton, 3 do  
 John Connick, 19 May 28  
 John M'Kirdy, 2d Feb. 29  
 Thomas Mitchell, 3d do  
 Stephen Shearman, jun 4 do

*Paymaster.*  
 John Wilson, (Capt) 2 Sept. 25  
*Adjutant.*  
 Robert Mowatt, (capt)  
*Quartermaster.*  
 D W Jack, 25 October 28

**Second Battalion.**

*Lieutenant-Colonel.*  
 Thomas Wyer, 22d June, 1824  
*Major.*

John M'Master, 5th Dec. 1824  
*Captains.*

M. M'Farline, 24th July 1812  
 Patrick Clinch, 1st April 21  
 Neil Morrison, do  
 Jediah Caff, 1st June do  
 Hugh M'Leod, 27th May, 22  
 Henry Seelye, do  
 James Pratt, 22d July, 23  
 Samuel M'Farline, 5th Dec. 24  
 E. Waddington, 10th March 28  
 John Mowatt, (Art.) 2d July, 29

*Lieutenants.*  
 H Matthewson, 10 May 24  
 Samuel Wallace, 5 December do  
 Thomas Turner, do  
 A Wetmore, 13 June 25  
 Patrick Morain, do  
 T H Carman, 26 March 27  
 Wm Gray, (Art.) 10 March 28

J Missinett, (Art) 11 Mar. '23  
 William Hislopp, 12 do  
 Joshua Knight, 13 do  
 B. Millikin, (Art.) 2d July, 29

*Ensigns.*  
 Geo. M'Kenzie, 5th Dec. 1824  
 Arch. M'Callum, do  
 Duncan M'Farline, do  
 William M'Kenzie 13 June 24  
 John Linton, 26th March 27  
 John Clinch, 27 do  
 Philip Justison, 10 March 28  
 Isaac Justison, 11 do  
 Rufus Clinch, 2d Feb 29

*Paymaster.*  
 Peter Stubs, (cap.) 12 June 26  
*Adjutant.*

W Flaherty, (capt) 13 June 25  
*Quartermaster.*

Peter Clinch, (Lt.) 26th Mar. 27  
**Third Battalion.**

*Lieutenant-Colonel.*  
 Harris Hatch, 13th Feb. 1826  
*Major.*

C R Hatheway, 6 March 1826  
*Captains.*

John Chaffey, 1st Dec. 1819  
 Joel Ingersoll, 1st June 22  
 William Franklin, 30 Nov do  
 John Leeman, 9 June 23  
 James Wilson, 22 July do  
 Josiah Haney, 12 June 26  
 William M'Lean, 13 do

*Lieutenants.*  
 Daniel Leeman, 27th May 1822  
 J E Hatheway, 9 June 23  
 John Appleby, 12 June 26  
 John Lord, 13 do  
 William Ferris, 7 Sept 29  
 James Brown, 8 do.  
 Wm. Curry, 9 do.

*Ensigns.*  
 Samuel Ingersoll, 1st July 1822  
 William Burke, 30 November do  
 F M'Kenny, 5 December 24  
 John Leonard, 13 June 26

1 Mar. '29  
 12 do  
 13 do  
 2d July, 29  
  
 Dec. 1824  
 do  
 do  
 June 24  
 March 27  
 do  
 March 28  
 do  
 Feb 29  
  
 2 June 26  
  
 3 June 25  
 r.  
 h Mar. 27  
 ion.  
 nel.  
 Feb. 1826  
  
 March 1826  
  
 Dec. 1819  
 at June 22  
 30 Nov do.  
 9 June 23  
 22 July do  
 12 June 26  
 3 do  
  
 May 1822  
 9 June 23  
 12 June 26  
 13 do  
 7 Sept 29  
 8 do.  
 9 do.  
  
 July 1822  
 vember do  
 cember 24  
 une 26

James White, 16th June 1828  
 Edward Wilson, 7th Sept. 29  
 William Huskins, 8 do  
*Paymaster.*  
 C Guay, (Capt) 12th June 1826

*Adjutant.*  
 W Hatch, (ospt) 30th Nov. 1823  
*Quartermaster.*  
 Metaliah Caukings, 25 Oct 28

**Charlotte County Cavalry.**

*Captain.* C J Briscoe, 5th Sept 1825  
*Lieutenant.* James Thompson, 12th do  
*Cornet.* Thomas Watson, 12th Sept 25  
*Quartermaster.* James Albee, 12th do

**Westmorland County Militia.**

**First Battalion.**

*Major.*  
 William Chapman, 10 March 28  
*Captains.*  
 Thomas Milne, 25d Nov 1823  
 Robert Scott, sur. 25th Aug. 29  
 Thomas E Smith, 11th June 26  
 William Smith, 12 do  
 Martin Wortmen, 13 do  
 James Chapman, 19th May 28  
 James Beatty, do  
 Matthew Summers, 15 do 29  
 Enoch Stiles, 16 do  
 William Wiley, 17 do  
 Alexander Nevers, 18 do

Henry Stover, 14th June 26  
 Alexander Crane, 15th do  
 John Nelson, 19th May, 28  
 Samuel S. Wilmot, do  
 Abel Steves, 15 do 29  
 John Jacques, 16 do  
 Zachariah Lutz, 17 do  
 Joseph Hannington, 18 do  
 Thomas Taylor, 19 do

*Lieutenants.*  
 Samuel Underwood, 25 Nov. 22  
 Jacob Gesner, 12th June 26  
 John Crandle, 13th do  
 Albert Smith, 14th do  
 Robert Stiles, 15th do  
 John Jones, 19th May, 28  
 William Bateman, 15th May 29  
 S. Babinot, 16th do  
 J. N. Chapman, 17 do  
 Stephen Welden, 18 do  
 John M'Cormick, 19 do  
 Daniel Hanning, 20 do

*Paymaster.*  
 J. Robinson, (capt.) 12 July 26  
*Adjutant.*  
 James Kelly, (Cap) 23d July 23  
*Quartermaster.*  
 J Charters, (Ens) 20th Nov 27

**Second Battalion.**

*Lieutenant-Colonel.*  
 Wm. B. Botsford, 20 May 1824  
*Captains.*  
 Henry Chapman, 16th Nov '11  
 Bill Chappel, 22d July, '23  
 A E Botsford, 16th Sept 23  
 C D Smith, 10 May, 24  
 M M Eacharan, 4 April 26  
 George Oulton, do 5  
 Mansfield Cornwall, 6 do  
 Ephraim Allen, 7 do  
 S. Easterbrooks, 16 June, '28  
 James Evans, 17 do  
 John Chapman, 18 do

*Ensigns.*  
 William Welling, 21st Nov. 22  
 John Scott, 13th June 26

*Lieutenants.*

William Raworth, 22d July 23  
 George L Kinnear, 23 do  
 Wm. Burnham, do  
 James Barnes, 10 May 24  
 Tho. Lawerston, do  
 William P Sayre, do  
 Reuben Taylor, 4 April 26  
 Joseph Wells, 5 do  
 John Anderson, 6 do  
 Thomas Ayre, 16 June 28  
 Ralph Carter, 17 do

*Ensigns.*

Benjamin Charters, 22d July 23  
 Henry Chapman, 10 May 24  
 John Raworth, do  
 John Downing, do  
 Charles Botsford, 4 April 26  
 Geoffry Trenholm, 7 do  
 Thomas Keelor, 8 do  
 Robert Chapman, 9 do  
 William Dixon, 10 do  
 Joseph Brown, 16 June, '28  
 John Bulmer, 17 do  
 Thomas Cochran, 18 do  
 James Cutler, 19 do

*Adjutant.*

D Chapman (capt) 4 April 26

*Quartermaster.*

James Sayre, jun 22d July 23

*Surgeon.*

Rufus Smith, 1st June 1810

*Assistant-Surgeon.*

M. Backhouse, 22d July 23

**Third Battalion.**

*Major.*

Phillip Palmer, 27th April 1824

*Captains.*

Thomas Pearson, 24th Nov 22  
 Samuel Clarke, 26 do  
 Newton Wells, 26 do  
 William Wilmot, 29 do  
 John Smith, 30 do  
 James M'Lachey, 25 Oct. 1828  
 George Turner, 26 do

*Lieutenants.*

John M'Lachey, 25th Nov. 22  
 Ezra Stiles, 27 do  
 William M'Almon, 22d Aug 25  
 Daniel Cameron, 25th Oct 28  
 Elisha Peck, 26 do  
 William Read, 27 do  
 John C Turner, 28 do

*Ensigns.*

George Steeves, 25th Nov 22  
 Elias Peck, 27 do  
 Hugh T M'Almon, 22 Aug. 25  
 Joseph Turner, 30 April 27  
 David Ackerly, jr. 25 Oct 28  
 William Kilpatrick, 26 do  
 Thomas Taylor, 27 do

*Adjutant.*

J. Sterritt, (capt.) 27 April 24

*Surgeon.*

William Wilson, 25 October 28

*Quartermaster.*

George Rogers, 22d August, 25

*Northumberland County Militia.*

**First Battalion.**

*Lieut. Colonel.*

A M'Donald, 2d July, 1829.

*Major.*

John Clark, 2d July 1829

*Captains.*

Alex Fraser, 1st June, 1822

James M'Donald, 2d do

Jacob Mercereau, 3d June 22

George Taylor, 4th do

Alexander Russell, 5th do

James Gilmour, 7th do

Roderick M'Leod, 8th do

John Joseph, 9th do

William Hamilton, 10th do

Alexander Loggie, 12th do

on.  
 April 1824  
 Nov 22  
 do  
 do  
 do  
 do  
 Oct. 1828  
 do  
 Nov. 22  
 do  
 Aug 25  
 Oct 28  
 do  
 do  
 do  
 Nov 22  
 do  
 Aug. 25  
 April 27  
 Oct 28  
 do  
 do  
 April 24  
 October 28  
 August, 25  
 June 22  
 do  
 do  
 do  
 do  
 do  
 do  
 do

Lewis Henry, 4th April, 1826  
 Dudley Perley, 5th do  
 Alex. Goodfellow, 6th do  
*Lieutenants.*  
 R M'Donald, 2d June, 1822  
 Donald M'Lean, 3d do  
 Finlay Morrison, 5th do  
 William Gray, 6th do  
 William Joplin, 7th do  
 John Campbell, 8th do  
 John Henderson, 11th do  
 A Henderson, 4th April, 1826  
 Andrew Hay, 5th do  
 J T Williston, 6th do  
 Martin Cranny, 7th do  
 Lewis Robichaud, 8th do  
 William Carman, 9th do  
 John M Johnson, 10th do  
 John Fraser, 11th do  
 Ward M'Donald, 12th do  
*Ensigns.*  
 J Osbaldston, 1st June, 1822  
 Alex Davidson, 2d do  
 Alex Morrison, 7th do  
 James Hierlihy, 8th do  
 Andrew Clark, 4th April, '26  
 Peter Morrison, 5th do  
 Christopher Clarke, 6th do  
 Isaac Paley, 7th do  
 William Taylor, 8th do  
 John Stewart, 9 do  
 Donald Fraser, 10th do  
 David Shaw, 11th do  
*Adjutant.*  
 Donald M'Donald 9th June, '29.  
*Quartermaster.*  
 James Davidson, do  
*Surgeon.*  
 Alexander Stewart, do  


---

**Second Battalion.**  


---

*Lieut.-Colonel.*  
 Alex Davidson, 2d July, 1829.  
*Major.*  
 James D Fraser, 2d July 1829.

*Captains.*  
 John Astle, 20th August '213  
 John Price, 21st do  
 Alex Fraser, 19th Aug. 1822  
 Chs M'Donald, 20th do  
 Wm Abrams, (S F) 21st do  
 Jared Betts, 22d do  
 Elijah Fowler, 23d do  
 John Fraser, 1st June, '23  
 James Abbott, 9th May, '24  
 Abel Pond, 10th do  
 David Croker, 11th do  
 William Loch, 25th April, '25  
 Donald M'Kay, 26th do  
 Richard M'Laughlin, 27th do  
 R Davidson, 11th June, '27  
 John Donald, 12th do  
 Peter Stewart, 13th do  
*Lieutenants.*  
 David Tozer, 2d June, '23  
 William Fiddes, 9th May, '24  
 George M'Intosh, 10th do  
 Thomas Smith, 11th do  
 Abraham Moores, 12th do  
 Aaron Hovey, 13th do  
 Simeon Elder, 25th April '25  
 James Moore, 26th do  
 Nathan Ritchie, 28th do  
 Gilbert Henderson, 29th do  
 Archibald Duncan, 30th do  
 William A Moore, 1st May do.  
 William End, 11th June, 1925.  
 Edward M'Quillan, 12th do  
 Henry B. Allison, 13th do  
 Robert Henderson, 14 do  
*Ensigns.*  
 Wm. Saunders, 19th Aug. '22  
 Donald M'Tavish, 20th do  
 Jared Tozer, 9th May, '24  
 Robert Wasson, 10th do  
 Moses Hovey, 11th do  
 Jacob Hovey, 12th do  
 Thomas Newcomb, 13th do  
 Andrew Young, 29th April '25  
 Phineas Davidson, 30th do  
 John Sutter, 1st May, do



George Kerr, 2d May 1825  
 Patrick Brannan, 11 June, '27  
 Thomas Underhill, 12th do  
 James Gillan, 13th do  
 Charles Coughlan, 14th do  
 Thomas Coughlan, 15th do  
 John Simpson, 16th do

*Adjutant.*  
 Wm Harley, (cap) 19th Aug '23  
*Quartermaster.*  
 John Henry, 1st June, '23  
*Surgeon.*  
 James Petrie, 9th May, '24

— 00 —  
**Gloucester Militia.**

**First Battalion.**

*Major.*

R. Ferguson, 6th June, 1821

*Captains.*

J. Miller, (Rifle) 9th June, '23  
 John Anderson, 11th Oct. do  
 John Shea, 15th June, '24  
 James Lee, 12th July. do  
 John Douglass, 26th July, '25  
 David M'Intosh, 27th do  
 William Miller, 10th do '26  
 Adam Ferguson, 26th Jan. '27  
 William Munro, 15th May, '29  
 John Fraser, 16 do

*Lieutenants.*

James Munro, 12th July, 1823  
 William Gray, 13th do 24  
 William Craig, 15th July, '25  
 James Fleming, 14th do  
 Charles Commeau, 15th do  
 Murray Newton, 8th do '26  
 R Clyde, (Rifle) 9th Jan. '27  
 William Young, do do  
 Robert Ferguson, jr. 26th do  
 John Montgomery, 27th do  
 Samuel Waitt, 15 May, '29  
 Benjamin Dawson, 16 do  
 John M'Intosh, 17 do

*Ensigns.*

Robert Connacher, 13th July, '25  
 John Edgar, 10th do '26  
 Wm M'Kenzie, 27th Jan. '27  
 David Duncan, 28th do

Daniel Racarty, 29th Jan. 1827  
 P. Dumaresq, Jun. 15th May '29  
 Alex. M'Pherson, 16th do.

*Adjutant.*

J. M'Pherson, (cap) 11 Oct '23  
*Quartermaster.*  
 Josh. Read, (Lieut.) 15 May, '23

**Second Battalion.**

*Major.*

John Young, 15th May, 1829

*Captains.*

Michael Landrey, 13th Ap. 21  
 William Drysdall, 14th June 24  
 Harvy Adams, 11th July 25  
 Augustin Landry, 12 do.  
 John Adams, 13 do.  
 M. Campbell, (adjt.) 11 July, 26

*Lieutenants.*

John Gennie, 13th July, 23  
 James Spence, 14th do.  
 Robert Hixon, 12th do. 24  
 Marcell Martin, 11th do. 25  
 Alex. Campbell, 9th Jan. 27  
 Peter Campbell, 29 do

*Ensigns.*

Augustin Louiser, 11th July, 25  
 Urban Landry, do 26  
 George Sivret, 12th do

*Adjutant.*

M. Campbell, (Capt.) 15 May, '29  
*Quartermaster.*  
 John Ritchie, 15th May, '29

Samu

Thou

John

David

Angu

Geor

Willi

Robe

S C

John

raime

T. L

D. R

Alex

B B

sonn

Willi

Jonas

Colin

Don

Robt

David

John

Wil

Phi

just

Eac

Phi

Ben

oh

Th

Ab

## Kent Militia.

### Major.

Samuel M'Kean, 25th Oct. 1828

### Captains.

Thomas Powell, 2d Nov. 1812

John Wheten, 25th Aug. '21

David M'Almon, do

Angus M'Intosh, do

George Pagan, do

William Bowser, 10th May, '24

Robert Jardine, 21st Feb. '26

B C Hewes, 24th Nov. '26

John P. Ford, 25th do

James Long, 16th June, 1828

T. Lansdowne, 25th Oct. 1828

### Lieutenants.

D. Robichaud, 10th March, '10

Alex. M'Kean, 25th Aug. '21

B B Goldsmith, 13th Feb. '26

John Bowser, 15th do

William Wilson, 16th do

Jonathan Cail, 17th do

Colin Rankin, 18th do

Donald Rankin, 19th do

Robert Long, 20th do

Peter Campbell, 21st Feb. '26

Solomon Powell, 4th April do

Samuel Girvan, 24th Nov. do.

William Brait, 25th do

Charles Surret, 26th do

### Ensigns.

James Pine, 2d Nov. 1812

W Hannington, 10th May, '24

Archibald Frew, 15th do

Israel Hicks, 16th do

John M'Gregor, 17th do

John Saunders, 18th do

Joseph Muzeroll, 19th do

Richard Bell, 24th Nov. '26

Robert Powell, 25th do

William Roach, 26th do

William Harper, 27th do

Talung Bushen, 28th do

Peter Sutherland, 15th May '29

### Adjutant.

T. Lansdowne, 25th Oct. '28

### Quartermaster.

P. Stubs, (Lieut.) 15th May, '29

### Surgeon.

Robt. Masterton, 18th Feb. '26

## King's County Militia.

### First Battalion.

#### Lieutenant-Colonel.

David B Wetmore, 16 June, '28

#### Captains.

John Worden, 1st Feb. 1810

William M'Leod, 27th May '23

Philip Dans, do

Justus S Wetmore, do

Ezekiel Flewelling, 10 May 24

Philip Nase, 29 April '27

Benjamin B Crawford, 30 do

John Smith, 10 May '28

Thomas Botswick, 25 Oct '28

Abraham Pricc, 26 do

#### Lieutenants.

W J Flewelling, 27th May 1822

Jeremiah Madec, do

Zebulon Jones, do

William Dickson, do

Thomas Flewelling, 28 April 27

Andrew Hamm, 29 do

Joseph Lyon, 30 do

Henry Belyea, 10 May, 1824

Lewis Carvel, 9 April 25

Samuel Gorum, 25 October 28

John Wright, 26 do

#### Ensigns.

Joseph Flewelling, 27th May 23

Peter M'Kenzie, 11th Oct '23  
 James Price, 10 do  
 James Williams, 28 April 27  
 Gabriel Worden, 29 do  
 James Reid, 30 do  
 George Neil, 19 May 28  
 Nathaniel Warren, 25 Oct 28  
 Isaac Hoyt Foster, 26 do

*Adjutant.*

David Wetmore, (cap) 1 May 27

**Second Battalion.**

*Major.*

John C Vail, 24th Nov. 1826

*Captains.*

Arthur M'Arthur, 11th Oct 23  
 Samuel Freeze, 11 October '23  
 Oliver Barbarie, 24th Nov 26  
 John Cogle, 25th do  
 John M'Arthur, 26th do  
 Samuel Goslin, 27th do  
 James Ryan, 28th do

*Lieutenants.*

Samuel M'Kully, 11th Oct 23  
 William Barbarie, 25 Nov. 26  
 Daniel Sheck, 26 do  
 Abraham Johnston, 27 do  
 O B Cogle, 28 do  
 R M'Monagle, 25 Aug 23  
 Charles Stockton, 2d July, 29  
 John M'Lean, 3d do

*Ensigns.*

Samuel Cleveland, 11 Oct. 1823  
 Morris Frazee, 25 Nov '26  
 George Dunfield, 26 do  
 Isaac Parlee, 27 do  
 Joshua Gidney, 28 do  
 John Burpe, 2d July, 29  
 George Morton, 3d do  
 Xenophon Cogle, 4th do

*Paymaster.*

John Marten, 6 March 1826

*Adjutant.*

J Barbarie, (capt) 25 Aug 23

*Quartermaster.*

James Hoyt, 11 October 23

**Third Battalion.**

*Major.*

Thomas Arnold, 25 August 23

*Captains.*

Caleb Wetmore, 2d June 1819  
 Elijah Baxter, 28th do 20  
 James Hughson, 25 August 23  
 Aley C Evanson, do  
 John Davis, 10th May, 24  
 J Humbert (rifle) 5th Sept 25  
 Tho. Fairweather, 12 June 26  
 Ebenezer Smith, 13 do  
 S. Fairweather, 14 do  
 Jabez Upham, 14th Sept. '29

*Lieutenants.*

J. Fairweather, (rf.) 12 Dec 25  
 Rufus De Mill, (rf.) do  
 John M'Donald, 12 June, 26  
 Samuel White, 13 do  
 Samuel Sprague, 14 do  
 William Frost, 15 do  
 Arthur Ketchum, 16 do  
 George Sprague, 17 do  
 James Wetmore, 15 May '29  
 Henry A. Demill, 14 Sept.

*Ensigns.*

Philo Marvin, 10th May 24  
 John Hays, 12th June, 26  
 J E Davis, 13th do  
 Geo. Hughson, 14 do  
 Samuel Hoyt, 15 do  
 M. Fowler, 17 do  
 James M. Fowler, 14 Sept. '29

*Adjutant.*

A. English, (Capt) 25 Aug 23

*Surgeon.*

Christopher Wilson, 12 June 26

*Quartermaster.*

Azor Hoyt, 5th Sept. 1825.

Queen's County Militia.

First Battalion.

Lieutenant-Colonel.

Harry Peters, 20 June '25

Major.

William Foshay, 20 Aug 27

Captains.

Stephen Golding, 1 June 23

Nathaniel Vail, 2d do

Thomas Gilbert, 5th do

Thomas Hewlett, 6th do

R. Golding, (Adjt.) 25 May, 24

Stephen Smith, 20th June, 25

Absolem Smith, 20th Aug. 27

Daniel Smith, 21st do.

Henry Lyons, 22d do

James Corbett, 23d do

Lieutenants.

Andrew Gunter, 2d June, '23

Robert Smith, 7th do

Charles Smith, 20th July, '24

Marcus Peters, 20th June, '25

Robert Smith, jun. 21 do

John Belyea, 22 do

James Colwell, 20th Aug. 27

Henry Bebbitt, 21st do.

William Wilson, 22d do

Henry Sharpe, 23d do

Ensigns.

Richard Hewlett, 1st June, '23

Richard Currie, jun 8th do

Robert Dingee, 20th July, '24

Bradford Hewlett, 20th June 25

Caleb Serritt, 21st do

Thomas Golding, 22d do

Stephen Currie, 20th Aug. 27

John Glass, 21st do

James Graham, 22d do

Martin Ricard, 23d do

Adjutant.

R. Golding, 27th April, 1824

Paymaster.

N H. De Veber, 24 Aug. 1829

Surgeon.

Robert P. Smith, 24 Aug. 1829

Quartermaster,

Elijah Smith, 16th June, 1816.

Second Battalion.

Lieut.-Col.

Harry Peters, 20th June, 1825

Major.

C. P. Wetmore, 20th Aug 1827

Captains.

Peter Yeomans, 20 Aug. 1807

Gilbert Currie, 3d June, 23

Daniel Keith, 4th do

John Earle, 7th do

John M'Lean, 8th do

Anthony Flowers, 10th do

John Seacord, 20th Aug '27

John M'Allister, 21st do

Lieutenants.

Andrew Barton, 1st June, 1805

Thomas Belyea, 6th June, '23

John Humphrey, 9th do

Joshua Calkins, 10th do

Lauchlan M'Lean, 11th June, '23

Chas. L Corey, 20th Aug. '27

Vincent White, 21st do

James M'Donald, 22d do

Ensigns.

Arthur Branscombe, 20 Aug. '07

Alex. M'Donald, 4th June, '23

Thomas Corey, 7th do

Ezekiel Stone, 9th do

David Stilwell, 10th do

Amos Corey, 20th Aug. '27

John Shearer, 21st do

Adjutant.

I M'Donald, (cap) 20th Aug '27

Quartermaster.

David Palmer, 20th Aug. '27

# City of Saint John.

Lauchlan Donaldson, Esquire, Mayor,  
Recorder.

## ALDERMEN.

Benjamin L. Peters, }  
Daniel Ansley, }  
Thomas Harding, }  
Robert Robertson, }  
George Bond, }  
William Olive, }  
Esquires.

## ASSISTANTS.

Mr. Daniel Smith,  
James O. Betts,  
William Vaughan,  
Ewen Cameron,  
John Ring,  
Joseph Ketchum,

## Wards.

King's  
Queen's,  
Duke's.  
Sidneys.  
Guys.  
Brooks.

John R. Partelow, Esquire, Treasurer or Chamberlain.

James Peters, junior, Esquire, Common Clerk.

Mr Joshua Bunting, High Constable.

William Fearerbey, Benjamin Herrington, William Till, Edward Bennison, Lewis Fayerweather, R. McElvy, and A. McKenzie, Marshalls.

Rowland Bunting, Lawrence Stivers, Benjamin Herrington, William Munford, George Wheaton, John Clarke, Andrew Rose, John McArthur, Lawrence Moore, Robert W. Lawlin, Hugh Wilson, William Fearerbey, Robert Riley, Alexander McKelvey, William Nixon, James Morrison, Seth Wheaton, and Edward Tool, Constables.

Ethenezer Herrington, Benjamin Herrington, Rowland Bunting, William Fearerbey, Lawrence Stivers, Robert W. Nowlin, and William Munford, Hog Reeves.

Daniel Dykeman, Samuel Clarke, John Cowell, and George Wheaton, Hog Reeves at Carleton.

Ezekiel Barlow, Hugh Johnston, John Ward, William Leavitt, Thomas Rawleigh, and Nehemiah Merritt, Port Wardens.

William Walker, Leverit H. DeVeber, Henry T. Partelow, and Samuel Strange, Assessors of Taxes.

James Kirk, William H. Street, and Benjamin Smith, Assessors of Nightly Watch Tax.

Thomas Baldwin, Collector of Taxes.

Thomas Coram, Collector of Taxes at Carleton.

Robert James, Inspector of Cord Wood and Bark.

Seth Seely, Collector of Slippage, Wharfage, and Measurer of Grain, and Coals.

Seth Seely, and Daniel Smith, Weighers of Hay.

Jacob Sherwood, ditto at Carleton.

Thomas Robson, Collector at Wharfage at the Breakwater.

Thomas Robson, Harbor Master.

Benjamin Chaloner, City Gauger.

Joshua Bunting, Looker after Nuisances.  
John Boyd, M. D. and Henry Cook, Visiting Physicians.  
Levi Lockhart, Fence Viewer.

Samuel Clarke, ditto at Carleton.

Robert C Minnette, City Surveyor.

Messrs. Crookshank & Walker, John Kerr, Elisha DeW Ratchford, George D Robinson, John V Thurgar, Nicholson & Vernon, J & H Kinnear, and John Robertson, Licensed Auctioneers.

John Wightman, John Reed, Thomas Reed, James Reed, John Leavitt, Smith Thomas, George Thomas, John S Anthony, John Mills, Benjamin Dalton, Francis Leavitt, John Woodley, Alexander Mills, Thos. Mills, J. Leavitt, jun and J Murry, Branch Pilots.

Levi Lockhart, Pound Keeper.

Samuel Clarke, ditto at Carleton.

Edward Lockhart, Samuel Jordan, Lyman Childs, David Fisher, Alexander M'Grotty, Thomas Trafton, Jacob Snider, Joseph Fairweather, John M Campbell, John Sherrard, Ewen Cameron, Elijah Hunt, Robert L Harris, George Bond, David Whiting, Samuel Skinner, Thomas Booth, and Amos Robertson, Surveyors of Lumber.

Stephen Gerow, Surveyor of North Slip.

Charles Kay, William Whelpley, William Barlow, Peter Ferguson, John Campbell, Archibald White, and George Waterberry, Inspectors of Lathwood, Staves, Hoop-Poles, &c.

William Whelpley, George Waterberry, William Barlow, and Charles Kay, Cullers of Dried Fish.

David Waterberry, and William Whelpley, Inspectors of Pickled Fish for the east side of the harbour.

Jacob Sherwood, and Joseph Beatty, do for west side.

Angus M'Kenzie, George Harding, and Thomas Lockey, Overseers of the Poor.

James O. Betts, Keeper of the Alms House.

Reverend Frederick Coster, Josiah Wetmore, and Samuel Strange, Trustees of Schools.

---

### Parish of Portland.

J C Waterberry, Robert Rankin, and Jas Travis, Overseers of Poor.

John O Waterberry, John Cunnard, and Robert Payne, Assessors.

John W Scott, Collector.

John Moore, Dennis Tiernay, Joshua Eggar, William Wood, James Stevenson, Junior, and James Burley, Constables,

Ephraim Sentell, James M'Gregor, Thomas M'Faddin, William Patterson, John Niles, Maurice Delany, James Grundy, Nugent Creighton, Jehiel Partelow, Junr. and Thomas Bean, Fence Viewers.

James M'Gregor, James Burley, Michael Campbell, Edward Hughes, and William O'Brien, Pound Keepers.

William O'Brien, John W Scott, John Moore, Dennis Tiernay, James

Stephenson, son. James Stephenson, jun. and James Burley, *Hog Reets.*  
Chs. Simonds, J. Jordau, and H. Peters, Esqrs. *Trustees of Schools.*  
William H A Keans, *Town Clerk.*

### *Parish of Lancaster.*

Isaac Clarke, James Olive, and Calvin L Hatheway, *Overseers of Poor.*  
Isaac Clarke, Jas Olive, and Calvin L Hatheway, *Assessors of Taxes.*  
John Harding, *Collector of Taxes.*  
Reverend Frederick Ooster, Isaac Clarke, and Archibald Menzies,  
*Trustees of Schools.*  
John Harding, Joseph Boggs, Isaac Finnetore, and Robert M Crossin,  
*Constables.*  
William Tilton, George Vaughan, and Charles Lord, *Fence Viewers.*  
William Tilton and Charles Lord, *Pound Keepers.*  
John Cochran, *Town Clerk.*

### *Parish of Saint Martins.*

Ebenezer Vaughan, William Bradshaw, and David Vaughan, *Overseer  
of the Poor.*  
James Moran, Joseph Brown. and Isaac Bradshaw, *Trustees of Schools.*  
Stephon Mosher, Eben. Vaughan, and Geo Brown, *Assessors of Taxes.*  
Simon Vaughan, *Collector of Taxes.*  
Daniel Vaughan, and Hezekiah DeLong, *Constables.*  
Philip Black, and Daniel Brown, *Fence Viewers.*  
Daniel Vaughan, *Pound Keeper.*  
Thomas H Black, *Town Clerk.*

---

### *Saint John Society Library.*

William Scovil, Esquire, President,  
James White, Esquire, Vice-President,  
Thos. Millidge, and Geo. D. Robinson, Esqrs. Committee.  
Robert F. Hazen, Esquire, Secretary and Treasurer,  
Mr. Anthony R. Truro, Librarian,

Library hours from twelve to one o'clock, every day.

### *Eclectic Library.*

Thomas Barlow, Esquire, President,  
George D Robinson, Esquire, Vice President,  
Mr. Wm. O. Smith, Secretary and Treasurer,  
Mr. William Andrews, Librarian.

Library hours, from three till four on Wednesdays and Saturdays.

### *Chamber of Commerce.*

Lauchlan Donaldson, Esquire, Chairman,  
William Leavitt, } Deputy Chairmen.  
Isaac Woodward, }  
James Robertson, Junior, Secretary.

ELECTIVE COMMITTEE.—John Robertson, James Kirk, Wm. Walker,  
George D Robinson and Thomas L Nicholson, ; and the Members of the  
Assembly for the City and County, who are Members of the Insurgon.

Log Records  
of Schools.

ers of Poor  
s of Taxes

d Manziel,

M: Crossin,

Vicars.

Overseer

of Schools.

of Taxes.

ttico.

y.

aturdays.

n. Walker,  
sical Ar-  
mon.

*Saint George's Society.*

James Hendricks, Esquire, President,  
Thomas Barlow, Esquire, Vice-President,  
Thomas Sandall, Esquire, Treasurer,  
John J Roberts, Esquire, Secretary.

*Saint Andrews Society.*

Robert W Crookshank, Esquire, President,  
John Boyd, Esq. M D Vice-President,  
Mr James Robertson, senior, Treasurer,  
Mr George Murray, Secretary.

*Saint Patrick's Society.*

R D Armstrong, Esquire, President,  
S G Hamilton, Esquire, Vice-President.  
Mr James M'Cleary, Secretary.  
Mr James Stewart, Assistant Secretary.

*Albion Society.*

Mr George Bragg, President,  
Mr William Scammell, Vice-President,  
Samuel Bagshaw, Esquire, Treasurer,  
Mr Anthony R Truro, Secretary.

*Phil-Harmonic Society.*

John Boyd, Esquire, M. D. President,  
Mr. Daniel Jordan, Vice-President,  
H. N. H. Lugin, Esquire, Treasurer,  
Mr. John D. Macintyre, Secretary.

*Firewardens, on the eastern side of the harbour.*

Charles J Peters, Thomas Barlow, John M Wilmot, Daniel Ansley,  
Noah Disbrow, senior, John Ward, junr. Thomas Harding, Lauchlin Do-  
naldson, John R Partelow, Thomas Heaviside, Robert Parker, Thomas  
Sandall, Gregory Van Horne, Robert Robertson, William Tyng Peters,  
William Leavitt, A S Perkins, and Daniel Smith; Esquires.

*Firewardens, on the western side of the harbour.*

Tristram Ring, Samuel Strange, James F Lilly, and J Ketchum.

UPON THE TWELVE SIGNS.

- ♈ The Head and Face the RAM doth always rule :
- ♉ The Neck and Throat are govern'd by the BULL.
- ♊ O'er the Arms and Shoulders still the TWINS preside :
- ♋ Breast, Stomach, Ribs, the crooked CRAB doth guide.
- ♌ The noble LION rules the Back and Heart :
- ♍ The bashful VIRGIN claims the Belly Part.
- ♎ The Reins and Loins the equal BALANCE weigh :
- ♏ The SCAPION o'er the Secret Parts doth sway.
- ♐ The curious ARCHER doth the Thighs affect :
- ♑ So doth the GOAT our bended Knees protect.
- ♒ The Legs unto AQUARIUS' Lot do fall :
- ♓ The FISH our active Feet their Portion call.



---

---

# Agricultural.

**GOD ALMIGHTY** first planted a *Garden*; and indeed it is the purest of human pleasures: it is the greatest refreshment to the spirits of man; without which buildings and palaces are but gross handy-works.

BACON'S ESSAYS.

**ASPARAGUS.**—**SOIL.**—Asparagus ground should be light, yet rich: a sandy loam, well mixed with rotten dung, or sea-weed is recommended.

Sown in April and May, in the same manner as onions, in rows, eighteen inches apart. Let it stand one or two years—transplant into trenches four feet wide, dug, if the soil will admit, fifteen inches deep—fill up six inches with rotten manure—place the roots fourteen inches apart.

*Time of Cutting.*—If you plant roots, the shoots may be cut the second year after; if seeds, they will not be fit to cut till the third year. All the shoots, which come up before the middle of June, may be cut off without injuring the roots; after which time the late shoots should be left to run up and go to seed; otherwise the roots will be weakened.

**BARLEY.**—The soil for Barley should be such as will grow good turnips, or other green crops, including clovers, and which embrace the varieties of loams and sands that are not wet, or very dry and poor. Barley cannot be cultivated to advantage upon stiff, heavy, and wet grounds, or on such as are of a cold and tenacious quality. This crop occupies the ground but about three months; and it is only in a dry, light, mellow soil, that its roots can extend with sufficient facility; and supply the food necessary to bring the grain to rapid and perfect maturity.

*Previous crop.*—Crops that precede this grain should be such as leave the ground mellow, and free from weeds; and for this reason hoed crops should be preferred, such as turnips, potatoes, peas, beans, &c. Small grains should not precede it; they impoverish the soil, leave it foul, and, besides, it is contravening one of the most salutary maxims of husbandry, to grow two dry crops in succession.

**CABBAGE PLANTING.**—The latter part of May is early enough to put the seed into the ground, whether the plants are to be removed or not. I have tried both ways, and, on the whole, I prefer transplanting. They are otherwise apt to be too tall, and to have crooked stems. Covering plants with leaves is not a good practice. They will be much heated through some sorts of leaves, the free circulation of air about them will be prevented, and their perspiration partly obstructed. If a hot sun cause them to droop,

a st  
on  
two  
ves  
T  
suffi  
of c  
larg  
he p  
abou  
at a  
a jer  
canc  
Th  
is no  
versy  
ny ot  
is, no  
which  
We o  
ble st  
the m  
CA  
cate a  
buds f  
the sa  
Pro  
which  
half wi  
light, h  
cauliffe  
nings c  
supplie  
are des  
EGC  
white-f  
tho latt  
prouche  
fried by  
This  
on a slig  
wards t  
warm p  
sunder,  
and if le  
them ab

a shingle, stuck into the ground, will be sufficient shelter, if it be on the south side of the plants. I commonly allow each plant two shingles, one on the south-east side, and one on the south-west, meeting at the south corner.

The act of planting should be performed carefully. Holes, of sufficient depth and width, should be dibbled, for the smaller sort of cabbages, at the distance of two feet and a half, and, for the larger sort, of three feet every way. In these the earth should be placed up to the lower leaves, and the earth brought closely about the roots, which is best done by pushing down the dibbler, at a small angle with the plant, and then bringing it up to it with a jerk. This leaves no chambering, (as gardeners call it,) no vacancy between the plant and the soil.

The state of the weather, when these operations are performed, is not a matter of indifference, and has been a subject of controversy; some recommending dry weather, others wet. As in many other cases of disputation, the truth lies between them—that is, moist weather is neither dry nor wet, and is precisely that which is best for setting out cabbages, or any other vegetable.—We ought not, however, to wait long for even this most favourable state of the atmosphere, since, with a little labour, we have the means of making up for its absence.

**CAULIFLOWER.**—The Cauliflower is one of the most delicate and curious of the whole of the brassica tribe; the flower buds forming a close, firm cluster or head, white and delicate, for the sake of which the plant is cultivated.

*Propagation and soil.*—The cauliflower is raised from seed, of which half an ounce is sufficient for a seed bed four feet and a half wide, by ten in length. The soil for the seed-bed may be light, but, for final transplanting, it can hardly be too rich, the cauliflower, like the vine, being reputed a “rough feeder.” Cleanings of streets, cesspools, &c. ought, therefore, to be liberally supplied during the growth of the plants, when very large heads are desired.

**EGG PLANT.**—There are two varieties of this plant, the white-fruited and the purple, cultivated for culinary purposes; the latter kind is preferable, and, when sliced and nicely fried, approaches, both in taste and flavour, nearer to that of a very nice fried oyster, than, perhaps, any other plant.

This delicious vegetable may be propagated by sowing the seed on a slight hot-bed, the beginning of April, or in March; and towards the latter part of May, they should be planted in a rich, warm piece of ground, at the distance of two feet and a half asunder, every way, for the purple, or two feet for the white kind; and if kept clean, and a little earth be drawn up to their stems, when about a foot high, they will produce plenty of fruit. Or,

the seed may be sown about the end of April, on a warm border, and planted out finally the beginning of June.

**INDIAN CORN.**—We shall not undertake to state the various methods employed for the field-culture of this valuable vegetable, with which it is presumed our readers are, generally, acquainted. But as it is often wanted as a culinary article, for early use, and cultivated in gardens for the supply of the table, we will give M<sup>r</sup> Mahon's mode of raising it :—

“Procure some seed of the earliest kind, and select a piece of dry, sandy, and tolerably rich ground, in a warm exposure. After preparing it as for peas, &c. form shallow drills, about two inches deep, at the distance of six feet from each other; [four feet and a half, or five feet, will answer for the smallest sorts;] drop the seeds therein two feet and a half asunder, and two grains in each place; strew a little wood-ashes in the drills, and cover the seeds as you would peas. As the plants advance in growth, earth them up two or three times.

**MINT.**—All the species are raised by the same methods, viz. by parting the roots, by offset young plants, and by cuttings of the stalks. Spearmint and peppermint like a moist soil; penny-royal a strong loam. The plants set in spring or summer will come into use the same year. They may be placed about eight inches apart, on beds about four feet wide, allowing a path two feet broad. New beds should be made every three years.

*Gathering the crop, and use.*—“Mint should be cut for drying,” says Phillips, “just when it is in flower, and on a fine day; for if cut in damp weather, the leaves will turn black. It should be tied in small bunches, and dried in a shady place, out of the wind; but, to retain its natural virtues more effectually, it has been found better to place the mint in a screen, and to dry it quickly before a fire, so that it may be powdered and immediately put into glass bottles, and kept well stopped. Parsley, thyme, sage, and other herbs, retain their full fragrance when thus prepared, and are by this mode secured from dust, and always ready to the hands of the cook.

“A conserve made of Mint is grateful, and the distilled waters, both simple and spirituous, are much esteemed. The juice of spearmint, drank in vinegar, often stops the hiccup. Lewis observes, what has before been observed by Pliny, that mint prevents the coagulation of milk, and hence it is recommended in milk dists.”

**MUSHROOM.**—Mr. Armstrong gives the following directions for cultivating the garden mushroom :—“Prepare a bed, early in October, either in a corner of the hot-house, if you have one, or a dry and warm cellar. The width of the bed at bottom should not be less than four feet, and its length in proportion to the

spawn provided. Its side should rise perpendicularly one foot, and should afterwards decrease to the centre, forming four sloping surfaces. We need hardly say that the material of the bed at this stage of the business must be horse dung, well forked, and pressed together to prevent its settling unequally. It should then be covered with long straw, as well to exclude frost as to keep in the volatile parts of the mass, which would otherwise escape.—After ten days the temperature of the bed will be sufficiently moderated, when the straw is to be removed, and a covering of good mould to the depth of an inch laid over the dung. On this the seed or spawn of the mushroom [which are threads or fibres of a white colour, found in old pasture-grounds, in masses of rotten horse-dung, sometimes under stable-floors, and frequently in the remains of old hot-beds] is to be placed in rows six inches apart, occupying all the sloping parts of the bed, which is again to be covered with a second inch of fresh mould and a coat of straw. If your bed has been well constructed, your mushrooms will be fit for use at the end of five or six weeks, and will continue to be productive for several months. Should you, however, in the course of the winter, find its productiveness diminished, take off nearly all the original covering, and replace it with eight or ten inches of fresh dung and a coat of clean straw. This, by creating a new heat, will revive the action of the spawn, and give a long succession of mushrooms.

**ONIONS.**—A spot of ground should be chosen for them, which is moist and sandy; because they require much heat, and a considerable degree of moisture. A low situation, where the sand has been washed down from a neighbouring hill, is very proper for them. And if it be the wash of a sandy road, so much the better. The most suitable manures are old, rotten cow and horse dung mixed, ashes, but especially soot. A small quantity of ashes or sand, or both, should be spread over them after sowing, especially if the soil be not sandy. And it is not amiss to roll the ground after sowing; or harden the surface with the back of a shovel.

A writer for the *N. E. Farmer*, vol. iii, p. 249, recommends "a moist, black, soil," as best, but says "a free, deep loam will answer very well." The onion is not by nature inclined to root deep. You must give it a hard bottom to grow on, and keep your manure on the surface within reach of the roots; then they will grow large, flat and handsome."...Advises to sow the same piece for several successive years. "I have always sowed onions in drills, about eighteen inches apart, to give fair play to the hoe. Onions must be sowed as early as possible after the frost is out of the ground: in this climate, if the seed is not in the ground before the first of May, there is but little chance for a crop. It

must be covered slightly, and stamped well over with the hoe to close it well. I would recommend, as most essential, to sow the seed sparingly. Even the best gardeners are apt to put in too much seed. The consequence is, that the young plants come up so thick that they run up spiry and weak; and, when you come to thin them, you find great difficulty to pull up so many without injuring those that you leave; and the worst injury is what you do to the roots, which you tear and loosen. Therefore have seed of your own raising, or that you know is fresh, and sow sparingly."

*Cultivation of drained Lands.*—It is well known that swamps, marshes, and other low lands are commonly places of deposit for the lighter and more fertile parts of the soil, washed from the neighbouring hills. Many marshes are in fact intervale land, naturally too wet for profitable cultivation. Wet lands, which receive the wash of higher grounds of a tolerable quality, may be expected to be worth considerable expense in draining. A bog, however, on the top of a hill, not overlooked by high ground, we should suspect of barrenness, and would not be at great expense in draining it, without examining and analyzing the soil in various parts, and becoming satisfied of its fertility. But a drained marsh, which can be flooded at the will of its owner, by means of a dam at its outlet, with water, which has washed the neighbouring uplands, may be considered as inexhaustible, and, perhaps, had better be appropriated to the raising of hemp. That plant exhausts the soil very much, and it would, therefore be good economy to raise it where the land can be recruited without manure from the farm-yard, &c. If the land is rich, not very dry, or water can be set back in the ditches, in a dry time, to within three or four feet of the surface, it will be quite an object to introduce fowl meadow.

It is often advisable to let drained lands lie over one summer to ferment and rot, before any attempt to cultivate them. Flooding them completely in the winter, and drawing the water quite off rather late in the spring, will likewise assist in rotting the sod.

*Potato Seed.*—Early last spring in one of our agricultural articles, we made a few observations on the best mode of cutting and manuring potatoes meant for seed. We stated, that the very best practical agriculturists differed widely as to the length of time the seed should be cut prior to planting. While some farmers think it benefited by laying cut six or eight days, others wish to have the cutting and planting going on at the same time; but a decided advantage results from taking the seeds from the top end of the potatoes. On this subject a correspondent in the Dumfries Courier says:—"We had an opportunity of making several interesting experiments in a garden of limited extent situated on the fertile banks of the Annan, and we uniformly ascertained that plants cut from the top end of the parent potato, were fit for the use of the table about a fortnight earlier than those cut from near the root, though both were planted on the same

day,  
and  
dece  
the o  
sues  
To t  
Who  
sets,  
this d  
being  
eyes,  
the fr  
the d  
farmer  
Pr  
annou  
cure i  
it is t  
state,  
small  
serve  
been  
presen  
GR  
tive, i  
by all  
of a d  
them,  
the gr  
trils a  
is a co  
that th  
and th  
the fa  
that th  
ing a v  
other  
or pul  
grub o  
Use  
—1. I  
2. C  
from i  
induce  
3. A  
new o  
all kin  
4. I  
when  
injuri  
Hoe  
gas, an  
subst  
and in

day, and had the same management. The stems were much more healthy and vigorous, and the crop always more luxuriant. Another circumstance deserving of notice, is, that when the root end of the potato is planted with the others, in the course of a few years a very perceptible degeneracy ensues; and hence arise, what in common phraseology, are called *bastards*. To this we have paid particular attention, chiefly on our father's farm. When the first traces of degeneracy appeared, we were led to examine the sets, and were always satisfied that it originated in the root. The first of this degeneracy is easily detected by a careful observer, from the potato being of a smaller growth, and of a variegated color, commencing at the eyes, whence the stems germinate, and differing for the first year very little from genuine seed; but in a few years, when these are again planted, the degeneracy rapidly increases. Too much care cannot be taken by the farmer to preserve the original plant free from mixture.—*Edin. Scotsman*.

**Preserving Grain.**—A discovery of considerable importance has been announced, with regard to preserving Grain. To preserve rye, and secure it from insects and rats, nothing more is necessary than to fan it after it is threshed, and to stow it in the granaries mixed with the chaff. In this state, it has been kept more than three years, without experiencing the smallest alteration, and even without the necessity of being turned to preserve it from humidity and fermentation. The experiment has not yet been made with wheat and other kinds of grain, and they may probably be preserved in chaff with equal advantage.

**GRUB IN SHEEP.**—The first expedient which I adopt for a preventive, is to keep my sheep on dry and elevated pasture land in summer, and by all means let them range where they can have access to dust, like that of a dry road. Every farmer has observed that sheep, when flies are about them, will keep a continual stamping with the feet, with their heads near the ground, especially where it is dusty. This dust is inhaled at the nostrils and produces a sneezing, by which the fly or eggs are thrown out. It is a common remark, and experience has demonstrated to every farmer, that the low moist land does not answer the purpose for rearing sheep, and the reason is obvious. As a cure for this disease, let every farmer in the fall, before the winter sets in, look to his flock, and he will discover that those sheep which are likely to be affected by the grub, are discharging a water-like substance at the nose; let him take a goose quill, or any other similar tube, or a common hand bellows, and blow dry scotch snuff or pulverised salt, up the nostrils of the sheep, and, it will destroy the grub or eggs and render the sheep sound and healthy.—*Albany Dai. Adv.*

**Uses of salt to cattle, when given so that they may eat as they please.**

—1. By allowing sheep to lick it, the rot may be effectually prevented.  
2. Cattle to whom lumps were given to lick, were thereby preserved from infectious disorders; cows are rendered more healthy, and by being induced to drink more, they give more milk.

3. A small quantity pounded, was found very beneficial to horses, when new oats were given them, if the oats were at all moist; and is useful, with all kinds of moist food.

4. It is said, that the mixing a little common salt with the seed of oats, when sown, is an *effectual preventive* against the attacks of the grub, so injurious to the crops of oats in some parts of Britain.—*Mosselman*.

**Hoven Cattle.**—As the distension is chiefly occasioned by carbonic acid gas, any substance which will combine with that gas will reduce it. Such a substance is readily found in ammonia, (hartshorn) a spoonful of which infused in water, & poured down the animal's throat will remove the distension.

**H O R S E S.**—*Observations on Bots.*—As early as the summer of the year 1801, I began a course of observations and experiments on the bots, a worm that infests the bowels of the horse, and often proves fatal to that useful animal. I took a large bot immediately after it was discharged from my horse, and enclosed it in dry horse dung, and put it into a bottle, and stopped it tight, and had the satisfaction to see it transform into a chrysalis in the course of three days, in which state it continued about five weeks, and was then hatched into a horse-bee, or hitters. I then carried the bottle to my horse and set the fly at liberty, and she immediately began to deposit her nits on the legs of the horse. The fly had not been with any other of her kind, and in what manner the nits had been fecundated was a mystery to me; but I soon found that the nits were impregnated after they were deposited on the hair of the horse. The male fly does not make its appearance until the latter part of August, and has every appearance of the female fly, except it is somewhat smaller, and has not the tail or the sting of the female. You will frequently see two male flies in September or October, contending for the chance of impregnating the nits, and they frequently engage and fight with the greatest obstinacy in order to obtain their favorite employment. The nits usually remain, about eight days after impregnation, before the bot is fit to enter into the bowels of the horse, at which time they make a small hole in the end of the nit; but they frequently remain in the nits for weeks or even months after they have produced: yet if the lips or tongue of the horse, covered with warm saliva, come in contact with the nit, the bot immediately leaves the nit, and adheres to the tongue, and is swallowed with the food of the horse. You may wet the palm of your hand with warm spittle, and apply it to the nits of your horse for a few seconds of time, and you can see with the naked eye a number of small insects on your hand; but if you view them through a magnifying glass they exactly resemble the bot. It is an easy matter to scrape the nits off from a horse about once a week, in the months of September and October; and a horse that is so served will never be troubled with the bots. I have tried a great number of medicines, in order to dislodge the bots from the bowels of the horse, and find it a very hard thing to accomplish, but have found that a table-spoonful of the powder of the blue flag root, in a fresh state, would frequently expel a great number of bots from the bowels. The horse is a very useful animal, and every discovery that has a tendency to profit his life, is of public utility.—*Prov. pap.*

**H O R S E S.**—The following remarks upon horses, are copied from the publication of an eminent farrier in Europe, and we think them worth the perusal of the farmers generally :

• The pulse of a horse in health, is from 36 to 40 beats in a minute, and may be easily felt by fixing the fingers gently upon the temporal artery, which is situated about an inch and a half backwards from the fore corner of the eye.

• Horses have not the faculty of puking or even belching wind out of their stomachs, and therefore are peculiarly subject to the wind colick.

• When a horse has been over ridden, bloody spots may be seen in the whites of his eyes.

• A limber dock is a sure sign of a limber back, that is, a weak one.

• A horse that is hardy and good for business, has a short back bone, which terminates forward of the hip bones.

• A decoction of white oak bark, will kill bots by tanning them, and they become so shrivelled as scarcely to be discernable when discharged.

• The principal signs of a good horse are these : The eyes set far apart

is the h  
two in  
blades  
so also  
weak n  
togethe  
is a go  
' It is

Spea  
of the s  
ed with  
eye-ball  
thing up  
motion  
with gr  
ant per  
pear, w  
fection,  
as cruel  
a black

The  
benes of  
an uprig  
cause a  
an elast  
those w  
of the h  
the mid  
chine:

fixing th  
tracted  
lamenes

*Hide*  
kept, an  
to his ri  
opposite  
that is,  
by oilin

*Potato*  
washed  
portion  
stantly a  
est ease

*Cows*  
should b

*Cattle*  
with ver  
peared  
rapid suc  
eye, and  
three, an  
animal g

in the head, and large and bright—the quirl high in the forehead, one or two in the neck is a good sign: the neck well set on, and high, the shoulder blades pretty high, and covering to a point, the breast full and large, and so also behind—the body round, for flat bodies or slab sided horses are weak natured; the dock stiff, going wide behind, for if the gambrels knock together, it shows that the horse is feeble; chewing the bit when provoked, is a good sign.

It is a Spanish proverb that a dapple grey will sooner die than tire.

Speaking of the eye-lids of birds, the writer remarks, “a third eye-lid of the same kind is found in the horse; and called the *haw*; it is moistened with a pulpy substance (or mucilage,) to take hold of the dust on the eye-ball and wipe it clean off, so that the eye is hardly ever seen with any thing upon it, though greatly exposed from its size and posture. The swift motion of the haw is given to it by a gristle, so as to drive out the haw with great velocity over the eye, and let it come back as quickly. Ignorant persons when this haw is inflamed from colds and swells so as to appear, which it never does in a healthy state, often mistake it for an imperfection, and cut it off: so nearly does ignorance produce the same mischief as cruelty! They might as well cut out the pupil of the eye, taking it for a black spot.

The other extract relates to the horse's hoof, and is as follows: “The bones of the foot are not placed directly under the weight; if they were in an upright position, they would make a firm pillar, and every motion would cause a shock. They are placed slanting, or oblique, and tied together by an elastic binding on their lower surfaces, so as to form springs as exact as those which we make of leather or steel for carriages. Then the flatness of the hoof which stretches out on each side, and the frog coming down in the middle between the quarters, adds greatly to the elasticity of the machine. Ignorant of this, ill-informed farriers nail the shoe too far back, fixing the quarters, and causing permanent contraction—so that the contracted hoof loses its elasticity; every step is a shock; inflammation and lameness ensue.”

**Hide-bound.**—Horses often become hide-bound when they are poorly kept, and badly used. In this case the animal grows poor, his skin sticks to his ribs, and some boils break out upon his back. A method of treatment opposite to that which the horse has received will generally restore him;—that is, keep and feed him well, work him moderately, and loosen his skin by oiling it, and using the curry-comb frequently, but not too harshly.

**Potatoes food for Horses.**—To every three hundred pound of potatoes, washed and steamed, is added half a pint of salt, and occasionally a small portion of sulphur; this quantity will more than supply a horse kept constantly at work for six days. Horses thus fed, will perform with the greatest ease, all the common labour of a farm, without hay or oats.

**Cows.**—When cabbages are given to cows, the decayed and mushy leaves should be taken off, or they will impart a bad taste to the milk and butter.

**Cattle cured.**—One of my oxen was taken a few days ago very suddenly with very singular symptoms, such as I had never before seen. He appeared perfectly deprived of the use of his limbs, and was taken in very rapid succession with convulsions. They came on by a wild gaze of the eye, and very apparent sensations of horror, lasted generally from two to three, and sometimes as long as five minutes, and during the intervals the animal gave evident symptoms of weariness. Upon examination I found



his horns perfectly cold, which induced me to bore them, and into the holes (made four or five inches from the head,) I poured a strong mixture of black pepper, salt, and vinegar. Not more than fifteen minutes elapsed before the convulsions ceased: in less than an hour he fed as usual, and at this time, (three days since his attack,) is apparently as well as any animal on my farm. I am induced to make this public, as I apprehend the complaint (from the extreme dampness of the season,) will not be very uncommon, and also because of the simplicity of the remedy, and the fair promise it gives of efficacy.

#### A PLANTER.

*Rules for making good butter.*—If you have four or five cows, it is best to churn every day; and by no means less frequently than every other day. If you cannot churn every day, throw into the cream, when gathered, a handful of nice salt. In very warm weather, when milk sours soon, put two heaping table-spoonfulls of salt into every pail of milk, before straining. The quantity as well as the quality of Butter is greatly improved by this method. If you have ice, put a small piece in every pan of milk, and also into the cream when you churn. If you have no ice, put the cream into a pail, and hang it into the well twelve hours before churning. In the warm season, cream should be skimmed as soon as it is in the least sour, and in the coldest weather milk should not stand more than thirty six or forty-eight hours. The utmost care should be taken to keep every article used in making butter, perfectly sweet, by frequent and thorough scalding.—*Journal of Humanity.*

*Eggs.*—A Chemist of Geneva says, that eggs may be preserved fresh and eatable for six or seven years, if kept tightly corked in a round bottle with a short neck, filled with very strong *lime water*.

*Domestic Economy.*—Amongst the most useful and nutritious substitutes for wheat, and which has the advantage of correcting the unwholesome properties of bad flour, is rice. During the scarcity of wheat in July, 1795, one of the measures adopted in the Foundling Hospital, with a view of lessening the consumption of flour, was the substitution of rice puddings for that of flour; which by the table of diet, were used for the children's dinner twice a week. The flour puddings, for each day, have taken about 168lbs. weight of flour; the rice puddings substitute, in their place, required only 21lbs. of rice to make the same quantity of pudding; the result of the experiment being that, in a baked pudding made with milk one pound of rice would go very nearly as far as eight pounds of flour. Rice contains a great deal of nutriment in a small compass, and does not pass so quickly off the stomach, as some other substitutes for wheat flour do. It is a good ingredient in bread. Boil a quarter of a pound of rice till it is quite soft; then put it on the back part of a sieve to drain it; and when it is cold mix it with three quarters of a pound of flour, a tea cupful of yeast, a tea cupful of milk, and a small table spoonful of salt. Let it stand for three hours; then knead it up, and roll it in about a handful of flour, so as the outside be dry enough to put it into the oven. About an hour and a quarter will bake it, and it will produce one pound fourteen ounces of very good white bread. It should not be eaten till it is two days old.—*Comp. Brit. Alm.*

*Wounds in cattle.*—The treatment of wounds in brutes is much the same as that practised in healing those on the human body. The operations of nature are the same in both; and from these are derived the principles which direct the management of wounds. The cruelties which are practised by ignorant and unskillful persons, in applying their nostrums, and knives, and pincers, cords, and burning irons, to poor dumb animals, call loudly for the intervention of common sense and humanity.—*Mac.*

## MISCELLANEOUS.

**COCKROACHES.**—An alarm has been sounded in various newspapers in different parts of the country, summoning the liege citizens of New England to unite their efforts for the suppression of *cockroaches*. The locust plague of Egypt, it is supposed, would not be more terrible than the unchecked inroads of these creatures, which are said to be more numerous during the present season, than at any previous point of time. We are happy to be able to announce the discovery of a method of destroying these intruders, at once simple and effective. It is as follows:—Procure from the herb woman, or apothecary, a moderate quantity of that odoriferous vegetable called **POKE ROOT**: boil it in water until the juices are extracted, and mingle the liquor with good West India Molasses, or if the spirit of patriotism be extravagant, with molasses from New Orleans; spread the liquid in large platters or soup plates, in the kitchen, pantry, closet, or watch house, or whatever apartment may have been the subject of invasion, and the enemy will be found slain in heaps, lying by hundreds, and fifties, before the following morning.—A gentleman to whom we are indebted for this information, states that he slaughtered 575 cockroaches in a single night, by means of the *poke root* and *molasses*, and that the root which had been boiled being thrown into a closet, thickly invested by the enemy, the place was quieted entirely in a few days, great numbers being left dead upon the field.—*Boston Gazette*.

**Weeds.**—Many weeds are introduced into fields by the slovenly practice of suffering them to grow and go to seed in yards, or dung-heaps, on the borders of fields, &c.

One year of good weeding,  
Will prevent the weeds seeding;  
But one year of their seeding  
Makes seven years weeding.

**Early rising.**—The two hours every morning between six and eight, make one day in every week; and in forty years, a man who gets up at six, lives ten years longer, in one sense, than a man who gets up at eight.

A physician has said, that a patient of his, a young person who was thought to be in a consumption, took the hint he gave him upon early rising, and every morning rose a few minutes earlier than before; and at length had time and strength to take a walk before breakfast, and completely recovered his health.

An eminent Physician in this country says—'that from personal knowledge *nineteen out of twenty* cases of consumption in females originate in *tight lacing*.'—Poh! there has been enough said upon this subject. None of our *fair* readers believe it. You might as well attempt to put the tail of a eel into curling paper, as to make them credit it.—*Bellows Fall pap.*

**A hint to housewives.**—A lady, who was fond of having her house well arranged, discovered to the amusement of her acquaintance, the art of making all her servants keep every thing in its place. Even in the kitchen, from the most minute article to the most unwieldy, every thing was invariably to be found in its allotted station; the servants were thought miracles of obedience; but, in fact, they obeyed because it was the easiest thing they could possibly do. Order was more convenient for them than discord; and with their utmost ingenuity to save themselves trouble, they could not invent places for every thing more appropriate than those which had been assigned by their mistress' legislative economy.

The following letters, it is said, were written over the ten commandments in a church in Wales, and remained unexplained more than a century.

PUBLIC ARCHIVES OF CANADA.

—

THE

DELANCEY—ROBINSON

COLLECTION.

of  
back,  
thee to  
Forest  
places than

No man ever inflicted a premeditated injury on another without doing a still greater injury to himself.

mand-  
century.

To THE LOVERS OF GOOD BEER.—Put 2 quarts molasses into a keg with ten gallons cool water. Boil 2 oz. alspice, 2 oz. ginger, 2 oz. hops, and half pint indian meal, in two or three quarts of water about an hour—strain it into a keg while hot—add 1 pint yeast—shake it well together—stop the keg nearly air tight, and let it stand about 24 hours, when it will be fit for use. The whole expense of this quantity will not exceed three shillings.

AGRICULTURAL.

“ See where the *Farmer*, with a master’s eye,  
Surveys his little kingdom, and exults  
In sov’rign independence. At a word,  
His feathery subjects in obedience flock  
Around his feeding hand, who in return  
Yields a delicious tribute to his board,  
And o’er his couch their dawning plumage spread.  
The peacock here expands his eyesful plumes,  
A glittering pageant, to the mid-day sun :  
In the stiff awkwardness of foolish pride,  
The swelling turkey apes his stately step,  
And calls the bristling feathers round his head,  
There the loud herald of the morning struts  
Before his cackling dames, the passive slaves  
Of his promiscuous pleasure. O’er the pond,  
See the grey gander, with his female train,  
Bending their lofty necks ; and gabbling ducks,  
Rejoicing on the surface, clap their wings ;  
Whilst wheeling round, in airy wanton flights,  
The glossy pigeons chase their sportive loves,  
Or in soft cooings tell their amorous tale.  
Here stacks of hay, there pyramids of corn,  
Promise the future markets large supplies :  
While with an eye of triumph he surveys  
His piles of wood, and laughs at winter’s frown.  
In silent rumination, see the kine,  
Beneath the leafy shade, patiently wait  
To pour into his pails their milky stores.  
While pent from mischief, far from sight remov’d,  
The bristly herd, within their fatt’ning styes,  
Remind him to prepare, in many a row,  
The gaily-blooming pea, the fragrant bean,  
And broad-leav’d cabbage, for the ploughman’s feast.  
These his amusements, his employments these ;  
Which still arising in successive change,  
Give to each varied hour a new delight.  
Peace and contentment with their guardian wings  
Enclose his nightly slumbers. Rosy health,  
When the gay lark’s sweet matin wakes the morn,  
Treads in his dewy foot-steps round the field ;  
And cheerfulness attends his closing day.  
No racking jealousy, nor sullen hate,  
Nor fear nor envy, discompose his breast.”

t doing a

# ROADS.

*From St. John to Fredericton, by the Nepesic.*

	Miles.
To Harding's (Newshire Tay.)	4
Brindley's	10
Mathew's (Douglas Arms,)	4
W. H. Logan's	12
Davy Gillman's	10
W. Smith's	7
W. Morrison's (Oronoco)	7
Fredericton,	65

*From Fredericton to Miramichi.*

To S. Miller's,	6
Young's	5
M. L. LaPlante	18
Crab's,	7
Boice's	7
Wilson's	7
Hunter's	6
Moore's,	12
Fowler's,	10
Cochrane's,	5
Astle's,	5
Fisher's,	5
Court House,	5

*From St. John to St. Andrews.*

To Robertson's (Manawagonish)	5
Tilton's (Musquash)	10
M. Laughlin's	5
Gray's	5
McGowan's—half way.	5
White's	5
Shaw's (Maguadivic)	5
Burn's (S. Patrick)	10
Tanner's	5
St. Andrews	5

*From St. John to Fredericton, by the Nepesic.*

To Black's (New Ferry, Ha)	10
Goodwin's Mill,	10
Kingsman's	10
Head of Millers,	10
Washburn's,	10
James's Ferry,	10
Robert's Mill,	10
N. W. Mill,	10
Fredericton,	10

*From St. John to Sussex.*

To Fearby's,	10
Beatty's	10
Hampton Ferry	10
Finger Board, Horton,	10
Mill Stream, Horton,	10
Sussex Vale,	10
Total,	60

*From St. John to Fort Cumberland.*

To Snider's,	10
Blakney's	7
Martin's	10
Jacques's	10
Harper's (Road)	15
Cherish's	10
Morriam's (Doncaster Arms)	10
Saskville, Band	10
Fort Cumberland,	7
Total,	97

*From Ft. Cumberland to Halifax.*

To Bon's (Amherst)	10
Stewart's	10
River Phillips	10
Durdy's (Cab. Mountains)	10
Clark's (Foot of the Mount.)	10
Londonerry,	10
Onslow,	10
Frere,	10
Clarke's,	10
Pollock's,	10
Gay River,	10
Kay's,	10
Hall's,	10
Blanchard's	10
Edin's	10
Hall's	10

*From St. John to Fredericton, by the Nepesic.*

To Black's (New Ferry, Ha)	10
Goodwin's Mill,	10
Kingsman's	10
Head of Millers,	10
Washburn's,	10
James's Ferry,	10
Robert's Mill,	10
N. W. Mill,	10
Fredericton,	10
Total,	100

of  
back,  
thee to  
For  
pines  
No  
still gr



