

**CIHM
Microfiche
Series
(Monographs)**

**ICMH
Collection de
microfiches
(monographies)**



Canadian Institute for Historical Microreproductions / Institut canadien de microreproductions historiques

© 1996

Technical and Bibliographic Notes / Notes techniques et bibliographiques

The Institute has attempted to obtain the best original copy available for filming. Features of this copy which may be bibliographically unique, which may alter any of the images in the reproduction, or which may significantly change the usual method of filming, are checked below.

L'Institut a microfilmé le meilleur exemplaire qu'il lui a été possible de se procurer. Les détails de cet exemplaire qui sont peut-être uniques du point de vue bibliographique, qui peuvent modifier une image reproduite, ou qui peuvent exiger une modification dans la méthode normale de filmage sont indiqués ci-dessous.

- Coloured covers/
Couverture de couleur
- Covers damaged/
Couverture endommagée
- Covers restored and/or laminated/
Couverture restaurée et/ou pelliculée
- Cover title missing/
Le titre de couverture manque
- Coloured maps/
Cartes géographiques en couleur
- Coloured ink (i.e. other than blue or black)/
Encre de couleur (i.e. autre que bleue ou noire)
- Coloured plates and/or illustrations/
Planches et/ou illustrations en couleur
- Bound with other material/
Relié avec d'autres documents
- Tight binding may cause shadows or distortion
along interior margin/
La reliure serrée peut causer de l'ombre ou de la
distorsion le long de la marge intérieure
- Blank leaves added during restoration may appear
within the text. Whenever possible, these have
been omitted from filming/
Il se peut que certaines pages blanches ajoutées
lors d'une restauration apparaissent dans le texte,
mais, lorsque cela était possible, ces pages n'ont
pas été filmées.

- Coloured pages/
Pages de couleur
- Pages damaged/
Pages endommagées
- Pages restored and/or laminated/
Pages restaurées et/ou pelliculées
- Pages discoloured, stained or foxed/
Pages décolorées, tachetées ou piquées
- Pages detached/
Pages détachées
- Showthrough/
Transparence
- Quality of print varies/
Qualité inégale de l'impression
- Continuous pagination/
Pagination continue
- Includes index(es)/
Comprend un (des) index

Title on header taken from: /
Le titre de l'en-tête provient:

- Title page of issue/
Page de titre de la livraison
- Caption of issue/
Titre de départ de la livraison
- Masthead/
Générique (périodiques) de la livraison

- Additional comments: /
Commentaires supplémentaires:

There are some creases in the middle of the pages.
Pages wholly or partially obscured by errata slips, tissues,
etc., have been refilmed to ensure the best possible image.

This item is filmed at the reduction ratio checked below/

Ce document est filmé au taux de réduction indiqué ci-dessous.

10X	14X	18X	22X	26X	30X
<input type="checkbox"/>	<input type="checkbox"/>	<input checked="" type="checkbox"/>	<input type="checkbox"/>	<input type="checkbox"/>	<input type="checkbox"/>
12X	16X	20X	24X	28X	32X

The copy filmed here has been reproduced thanks to the generosity of:

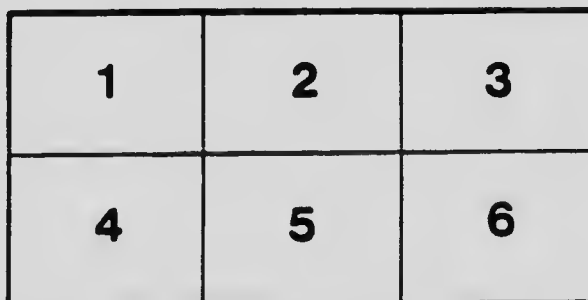
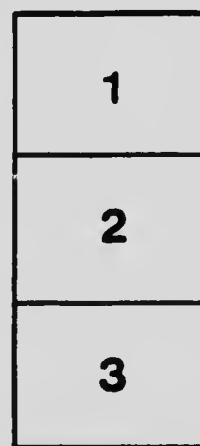
Art Gallery of Ontario
Edward P. Taylor Research Library and Archives

The images appearing here are the best quality possible considering the condition and legibility of the original copy and in keeping with the filming contract specifications.

Original copies in printed paper covers are filmed beginning with the front cover and ending on the last page with a printed or illustrated impression, or the back cover when appropriate. All other original copies are filmed beginning on the first page with a printed or illustrated impression, and ending on the last page with a printed or illustrated impression.

The last recorded frame on each microfiche shell contain the symbol \rightarrow (meaning "CONTINUED"), or the symbol ∇ (meaning "END"), whichever applies.

Maps, plates, charts, etc., may be filmed at different reduction ratios. Those too large to be entirely included in one exposure are filmed beginning in the upper left hand corner, left to right and top to bottom, as many frames as required. The following diagrams illustrate the method:



L'exemplaire filmé fut reproduit grâce à la générosité de:

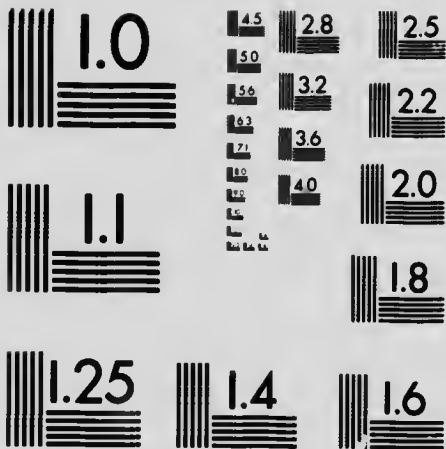
Musée des beaux-arts de l'Ontario
Bibliothèque de recherche et Archives
Edward P. Taylor

Les images suivantes ont été reproduites avec le plus grand soin, compte tenu de la condition et de la netteté de l'exemplaire filmé, et en conformité avec les conditions du contrat de filmage.

Les exemplaires originaux dont la couverture en papier est imprimée sont filmés en commençant par le premier plat et en terminant soit par la dernière page qui comporte une empreinte d'impression ou d'illustration, soit par le second plat, selon le cas. Tous les autres exemplaires originaux sont filmés en commençant par la première page qui comporte une empreinte d'impression ou d'illustration et en terminant par la dernière page qui comporte une telle empreinte.

Un des symboles suivants apparaîtra sur la dernière image de chaque microfiche, selon le cas: le symbole \rightarrow signifie "A SUIVRE", le symbole ∇ signifie "FIN".

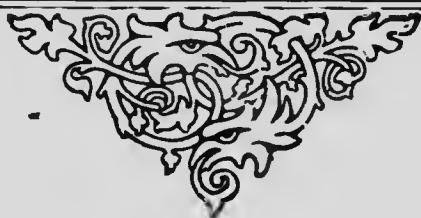
Les cartes, planches, tableaux, etc., peuvent être filmés à des taux de réduction différents. Lorsque le document est trop grand pour être reproduit en un seul cliché, il est filmé à partir de l'angle supérieur gauche, de gauche à droite, et de haut en bas, en prenant le nombre d'images nécessaire. Les diagrammes suivants illustrent la méthode.



MICROCOPY RESOLUTION TEST CHART
NATIONAL BUREAU OF STANDARDS
STANDARD REFERENCE MATERIAL 1010a
(ANSI and ISO TEST CHART No. 2)

THE FINE ARTS DEPARTMENT

UNDER THE MANAGEMENT OF THE
HALIFAX LOCAL COUNCIL OF WOMEN



PROVINCIAL EXHIBITION
HALIFAX, NOVA SCOTIA
— MCMVII —

ILLUSTRATED CATALOGUE
PRICE 10 CENTS

708.971
H13.8
1907

18



70.1
H13.2

1907



ARTS BUILDING.



A LOAN COLLECTION

OF

PAINTINGS BY OLD MASTERS

AND

MODERN CANADIAN AND FOREIGN ARTISTS

CATALOGUE

EXPLANATION



These pictures are loaned by the kindness of private collectors and artists. Those having prices affixed are for sale. For further information, apply to Miss E. Ritchie, Winwick, Halifax.



BAKER, W. BLISS:

- 1 The Brook.

(Loaned by J. A. Johnson, Esq., Halifax.)

BANNERMAN, FRANCES:

- 2 Angling.
- 3 A Breton Interior.
- 4 Landscape.
- 5 A Little Lad.

(Loaned by Mrs. Walter G. Jones, Halifax.)

BELL-SMITH, F. M., R.C.A., President Ontario Society of Artists:

- 6 In the Rockies.

(Loaned by Mrs. James Morrow, Halifax.)

BOXINGTON, R. P., (Attributed to):

English painter. Born 1801; died 1828.

- 7 A Passing Shower.

(Loaned by J. A. Johnson, Esq., Halifax.)



ANGLING.

MRS. BANNERMAN.

BOTTICELLI, ALLESANDRO DI:

Italian painter. Born 1447; died 1515.

8 Flora (Copy). Detail from his celebrated picture of Spring, now in the Accademie Gallery at Florence.

(Loaned by Geo. S. Campbell, Esq., Halifax.)

BRYANT, WALLACE, Boston:

9

(Loaned by the Artist.)

BRYANT, MRS. W., Boston:

10

(Loaned by the Artist.)

CARAVAGGIO, M. A. DA:

Italian painter. Born 1569; died 1609.

11 The Musicians.

(Loaned by Thomas E. Keung, Esq., Halifax.)

CARTIN, F. G.:

12 Roses.

(Loaned by Mrs. Allison, Halifax.)

COPLEY, JOHN SINGLETON:

American artist. Born 1735; died 1815.

13 Portrait of Rev. Mather Byles.

(Loaned by Dr. W. B. Almon, Halifax.)

COOMANS, A., French artist:

14 Sheep.

(Loaned by J. A. Johnson, Esq., Halifax.)

DAY, FORSHAW, R.C.A.:

Canadian artist, died 1903.

15 North-West Arm, Halifax.

(Loaned by Miss C. A. Ritchie, Halifax.)

FAED, THOMAS:

Scottish artist. Died 1900.

16 Landscape.

(Loaned by Mrs. Thompson, Halifax.)

FULLER, MARGARET, Boston:

17 The Stream.

(Loaned by the Artist.)

GRAY, UNA, Boston:

18 In a Studio.

(Loaned by Miss E. Ritchie, Halifax.)



PORTRAIT OF REV. MATHER BYLES. BY COPLEY.

- 19 Wilhelmina; a sketch.
(Loaned by Mrs. E. J. deBlois, Windsor.)
- 20 From My Window at Night\$ 15
(Loaned by the Artist.)
- 21 Portrait in Pastels.
(Loaned by Miss M. W. Ritchie.)

HALE, PHILIP, Boston:

- 22 Portrait of Rev. Edward Everett Hale.
(Loaned by the Artist.)

HALE, LILLIAN WESTCOTT, Boston:

- 23 The Convalescent.
(Loaned by the Artist.)

HAMMOND, JOHN, R.C.A., Sackville, N. B.:

- 24 Dutch Farm\$200
 25 Sand Dunes, Holland 175
(Loaned by the Artist.)

HARRIS, ROBERT, C.M.G., R.C.A.:

- 26 Portrait of the late Jairus Hart, Esq.
(Loaned by the Bank of Nova Scotia.)
 27 In a Meadow.
(Loaned by Mrs. J. S. Maclean, Halifax.)

HARVEY, GEORGE:

- 28 Early Morning.
(Loaned by Geo. S. Campbell, Esq., Halifax.)
 29 Afterglow.
(Loaned by Miss Una Gray, Boston.)
 30 A Welsh Courtyard at Twilight.
(Loaned by Miss Edith Smith, Halifax.)

HILL, KATE F., Halifax:

- 31 Rose Garden\$ 16
 32 Daffodils.

HULK, R. A.:

- 33 Near Charlwood, Surrey.
(Loaned by Mr. Justice Loughey, Halifax.)

JACOBI, O. R., Pres. R.C.A., O.S.A.:

- Canadian artist. Born 1812; died 1901.
 34 Lake Champlain.
(Loaned by O. M. Hill, Esq., Halifax.)

JONES, MRS. F. P., Sydney, C. B.:

- 35 On the South-West Arm, Sydney.
(Loaned by the Artist.)



EARLY MORNING.

BY GEORGE HARVEY.

JOHNSON, EASTMAN :

American artist. Died 1906.

- 36 Study for Portrait of Sir Edward Archibald,
K.C.M.G., C.B.

(Loaned by Mrs. Charles Archibald, Halifax.)

KIMBER, HELEN D.:

- 37 The Old Farm House.
38 The Reef at Louisburg. \$ 15
39 On the Charles River, Dedham, Mass. 12
40 A River Meadow 12
41 A Cape Breton Brook.

(Loaned by the Artist.)

LAURENCE, SIR THOMAS. President of the Royal Academy. English artist. Born 1769; died 1830:

- 42 Portrait of Samuel George William Archibald, L.L.D., Master of the Rolls.
(*Loaned by the Government of Nova Scotia.*)

LELY, SIR PETER, Flemish artist, painted in England. Born 1617; died 1680.

- 43 Portrait.
44 Portrait.
(*Loaned by Colonel Stewart, Halifax.*)

MACPHERSON, VIOLET:

- 45 The Beggar Maid.
(*Loaned by Mrs. William Black, Halifax.*)
46 An Autumn Scene.
47 Italian Girl.
(*Loaned by Mrs. McLaren, Halifax.*)

McLENNAN, LOUISE B., Sydney, C. B.:

- 48 The Steel Works, Sydney.
49 Old Cottages in Norway.
50 A Portrait.

MURPHY, HERMAN, Boston:

- 51
52
53
(*Loaned by the Artist.*)

PIRAZO, L.:

- Italian artist. Died 1899.
54 View of Naples.
(*Loaned by Miss E. Ritchie, Halifax.*)



TRANQUILLITY.

G. A. REID, P. R. C. A.

POST, W. MERRITT:

55 A Jersey Swamp.

(Loaned by J. A. Johnson, Esq., Halifax.)

REID, GEORGE AGNEW. President Royal Canadian Academy:

56 Tranquillity\$1000

57	Spring: Decorative Panel	1000
58	May	500
59	A Canadian Girl ?	300
	<i>(Loaned by the Artist.)</i>	

REID, MARY H., A.R.C.A., Toronto:

60	Studio Interior	\$ 40
61	The New Moon	100
62	Moonrise	100
63	Daisies	50
	<i>(Loaned by the Artist.)</i>	
64	Roses.	
	<i>(Loaned by Rod. Macdonald, Esq., Halifax.)</i>	

*Instead of 57, 58, & 59, which were
not sent, we had two pastels as called
I think "A Study in Brown," the other
similar in size to it: and a quite
small landscape*

..	\$200
..	150
..	100
..	75
..	40

SMITH ROSAMOND, Boston, Mass.:

72
73
74

(Loaned by the Artist.)



STUDIO INTERIOR.

MRS. REID.

SMITHERS, GEORGE:

75 The Smugglers.

(Loaned by Lewis E. Smith, Esq., Halifax.)

STUART GILBERT:

American artist. Born 1755; died 1828.

76 Portrait of Madame Morton.

(Loaned by Miss Una Gray, Boston.)

UNKNOWN ARTIST:

77 The Castle of St. Angelo, Rome.

(Loaned by Mrs. Charles Archibald, Halifax.)

57	Spring: Decorative Panel	1000
58	May	500
59	A Canadian Girl	300
	<i>(Loaned by the Artist.)</i>	

REID, MARY H., A.R.C.A., Toronto:

60	Studio Interior	\$ 40
		... 100
		... 100
		... 50

(alifax.)

ROSENBERG, H. M., Halifax:

66	The Port Light, Dartmouth Ferry	\$200
67	The Wake of the Ferry	150
68	Halifax, 4.30 A. M.	100
69	George's Island, Evening	75
70	Petite Riviere, Mist	40
	<i>(Loaned by the Artist.)</i>	

SMITH, LEWIS E., Halifax:

71	The Pond.
	<i>(Loaned by the Artist.)</i>

SMITH ROSAMOND, Boston, Mass.:

72
73
74

(Loaned by the Artist.)



STUDIO INTERIOR.

MRS. REID.

SMITHERS, GEORGE:

75 The Smugglers.

(Loaned by Lewis E. Smith, Esq., Halifax.)

STUART GILBERT:

American artist. Born 1755; died 1828.

76 Portrait of Madame Morton.

(Loaned by Miss Una Gray, Boston.)

UNKNOWN ARTIST:

77 The Castle of St. Angelo, Rome.

(Loaned by Mrs. Charles Archibald, Halifax.)



PORTRAIT OF THE LATE HON. JAMES W. JOHNSTON AND
HIS BROTHER. BY WATSON.

UNKNOWN ARTIST:

78 Lucrece,

(Loaned by J. A. Johnson, Esq., Halifax.)

VONDEY, AGNES, Halifax:

79 Study of Girl's Head.

WATSON, GEORGE:

President of Royal Scottish Academy. Died
early in 19th century.

80 Portrait taken in childhood of Hon. James W.
Johnston, successively Premier of Nova
Scotia, Judge in Equity, and Governor
elect of Nova Scotia, with his elder brother,
John Johnston.

(Loaned by A. C. Johnston, Esq., Dartmouth.)

WESSELHOFT, MARY F., Boston:

- 81 View of Ogunquit, Maine.
- 82 Morning in Venice.

PAINTINGS

ENTERED BY

PROFESSIONAL ARTISTS

IN THE

ART DEPARTMENT OF THE PROVINCIAL
EXHIBITION.

BROWN, MATHER:

American and English artist. Died 1816.

- 83 The Finding of Moses (For sale)\$60
(Loaned by George Ritchie, Esq., Halifax.)

BURCHELL, MRS. GEORGE, South Nelson, N. B.:

- 84 Portrait of Child.
- 85 Portrait of Child.
- 86 Landscape.

HILL, KATE F., Halifax:

- 87 June at Fernleigh\$15
- 88 Sandy Beach at Sambro 12
- 89 Railway Cutting Near Mount Denison.... 10
- 90 Mayflowers 8
- 91 Flowering Almond 10

KELLY, MARY ROSE, Yarmouth:

- 92 Fancy Free\$10
 93 Peasant Woman (Pastel) 10
 94 Dante's Bridge 5

LEAR, ISABEL, Halifax:

- 95 A storm Brewing at Eastern Passage.....\$50
 96 Near Chocolate Lake 25
 97 Off Hosterman's Grounds, North-West Arm 25

LEAR, KATE A., Halifax:

- 98 Childhood's Happy Days\$25
 99 On the Beach 25
 100 Waiting 20
 101 Portrait from Life 50
 102 Companions 50
 103 Sunny Hours 20

SEELEY, FLORENCE, Chester, N. S.:

- 104 Undergoing Repairs.
 105 Nass Point, Fairmount, Chester.
 106 Pansies.

WEBSTER, CHARLOTTE E., Chester:

- 107 Portrait of late Gov. Jones, miniature...\$50
 108 A Study, miniature 50

