

**CIHM
Microfiche
Series
(Monographs)**

**ICMH
Collection de
microfiches
(monographies)**



Canadian Institute for Historical Microreproductions / Institut canadien de microreproductions historiques

© 1997

Technical and Bibliographic Notes / Notes techniques et bibliographiques

The Institute has attempted to obtain the best original copy available for filming. Features of this copy which may be bibliographically unique, which may alter any of the images in the reproduction, or which may significantly change the usual method of filming are checked below.

- Coloured covers / Couverture de couleur
- Covers damaged / Couverture endommagée
- Covers restored and/or laminated / Couverture restaurée et/ou pelliculée
- Cover title missing / Le titre de couverture manque
- Coloured maps / Cartes géographiques en couleur
- Coloured ink (i.e. other than blue or black) / Encre de couleur (i.e. autre que bleue ou noire)
- Coloured plates and/or illustrations / Planches et/ou illustrations en couleur
- Bound with other material / Relié avec d'autres documents
- Only edition available / Seule édition disponible
- Tight binding may cause shadows or distortion along interior margin / La reliure serrée peut causer de l'ombre ou de la distorsion le long de la marge intérieure.
- Blank leaves added during restorations may appear within the text. Whenever possible, these have been omitted from filming / Il se peut que certaines pages blanches ajoutées lors d'une restauration apparaissent dans le texte, mais, lorsque cela était possible, ces pages n'ont pas été filmées.
- Additional comments / Commentaires supplémentaires:

L'Institut a microfilmé le meilleur exemplaire qu'il lui a été possible de se procurer. Les détails de cet exemplaire qui sont peut-être uniques du point de vue bibliographique, qui peuvent modifier une image reproduite, ou qui peuvent exiger une modification dans la méthode normale de filmage sont indiqués ci-dessous.

- Coloured pages / Pages de couleur
- Pages damaged / Pages endommagées
- Pages restored and/or laminated / Pages restaurées et/ou pelliculées
- Pages discoloured, stained or foxed / Pages décolorées, tachetées ou piquées
- Pages detached / Pages détachées
- Showthrough / Transparence
- Quality of print varies / Qualité inégale de l'impression
- Includes supplementary material / Comprend du matériel supplémentaire
- Pages wholly or partially obscured by errata slips, tissues, etc., have been refilmed to ensure the best possible image / Les pages totalement ou partiellement obscurcies par un feuillet d'errata, une pelure, etc., ont été filmées à nouveau de façon à obtenir la meilleure image possible.
- Opposing pages with varying colouration or discolourations are filmed twice to ensure the best possible image / Les pages s'opposant ayant des colorations variables ou des décolorations sont filmées deux fois afin d'obtenir la meilleure image possible.

This item is filmed at the reduction ratio checked below /
Ce document est filmé au taux de réduction indiqué ci-dessous.

10x		14x		18x		22x		26x		30x	
<input type="checkbox"/>	<input type="checkbox"/>	<input type="checkbox"/>	<input type="checkbox"/>	<input type="checkbox"/>	<input type="checkbox"/>	<input checked="" type="checkbox"/>	<input type="checkbox"/>	<input type="checkbox"/>	<input type="checkbox"/>	<input type="checkbox"/>	<input type="checkbox"/>
12x		16x		20x		24x		28x		32x	

The copy filmed here has been reproduced thanks to the generosity of:

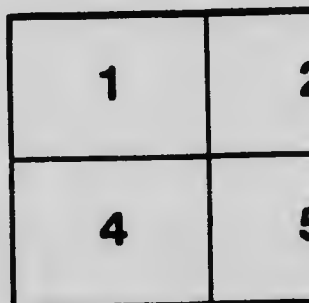
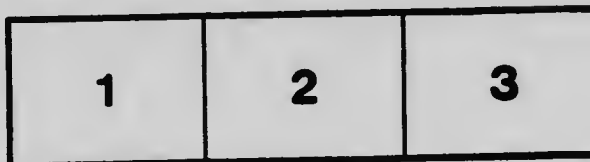
Vancouver City Archives

The images appearing here are the best quality possible considering the condition and legibility of the original copy and in keeping with the filming contract specifications.

Original copies in printed paper covers are filmed beginning with the front cover and ending on the last page with a printed or illustrated impression, or the back cover when appropriate. All other original copies are filmed beginning on the first page with a printed or illustrated impression, and ending on the last page with a printed or illustrated impression.

The last recorded frame on each microfiche shall contain the symbol \rightarrow (meaning "CONTINUED"), or the symbol ∇ (meaning "END"), whichever applies.

Maps, plates, charts, etc., may be filmed at different reduction ratios. Those too large to be entirely included in one exposure are filmed beginning in the upper left hand corner, left to right and top to bottom, as many frames as required. The following diagrams illustrate the method:



L'exemplaire filmé fut reproduit grâce à la générosité de:

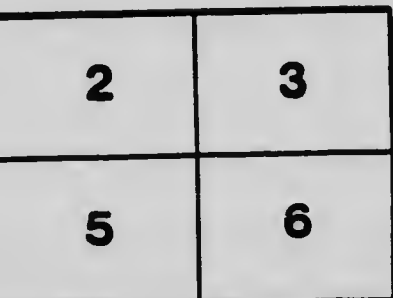
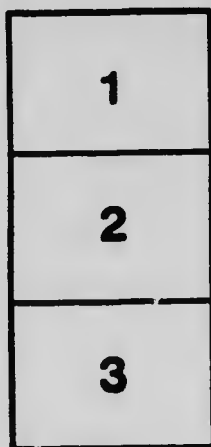
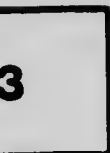
Vancouver City Archives

Les images suivantes ont été reproduites avec le plus grand soin, compte tenu de la condition et de la netteté de l'exemplaire filmé, et en conformité avec les conditions du contrat de filmage.

Les exemplaires originaux dont la couverture en papier est imprimée sont filmés en commençant par le premier plat et en terminant soit par la dernière page qui comporte une empreinte d'impression ou d'illustration, soit par le second plat, selon le cas. Tous les autres exemplaires originaux sont filmés en commençant par la première page qui comporte une empreinte d'impression ou d'illustration et en terminant par la dernière page qui comporte une telle empreinte.

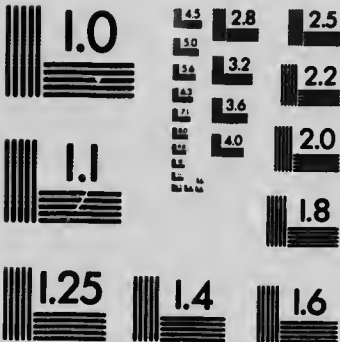
Un des symboles suivants apparaît sur la dernière image de chaque microfiche, selon le cas: le symbole \rightarrow signifie "A SUIVRE", le symbole ∇ signifie "FIN".

Les cartes, planches, tableaux, etc., peuvent être filmés à des taux de réduction différents. Lorsque le document est trop grand pour être reproduit en un seul cliché, il est filmé à partir de l'angle supérieur gauche, de gauche à droite, et de haut en bas, en prenant le nombre d'images nécessaire. Les diagrammes suivants illustrent la méthode.



MICROCOPY RESOLUTION TEST CHART

(ANSI and ISO TEST CHART No. 2)



APPLIED IMAGE Inc

1653 East Main Street
Rochester, New York 14609 USA
(716) 482 - 0300 - Phone
(716) 288 - 5969 - Fax

1914--7



Programme of Concert

GIVEN IN THE

ORPHEUM THEATRE
VANCOUVER, B. C.

Sunday, May 10th, 1914

IN AID OF THE

British Columbia Anti-Tuberculosis
Society



The Standard



for all Printing

Printers of this Programme

Commercial Printing and Publishing Co. Ltd.

Phones, Seymour 4636 and 4637

Exchange connecting all
Departments

World Bldg.

Vancouver

Phones, Seymour
3764 and 3795

716 Hastings Street, W.
OPEN ALL NIGHT

LEONARD'S CAFE

G. C. LEONARD, Prop.

Always Help a Little

716 Hastings Street, W.
Opposite Post Office

Vancouver, B.C.

163 Hastings Street, W.
Basement of Flack Block

A BIG POLITICAL BATTLE

The next big fight will be the battle for Home Rule. But if it was to decide the best furniture storage and shipping company in Vancouver, the parties would, without exception, vote for the Campbell Storage Company. Best service at lowest rates. Just try us.

CAMPBELL STORAGE COMPANY

MOVING—PACKING—STORAGE—SHIPPING

Phone Seymour 4636

Office: 857 Beatty Street

SAM M. SCOTT

BOYS' CLOTHES

∴ SPECIALIST ∴



Vancouver

Victoria



What the presence of Tuberculosis means to a country

TUBERCULOSIS is responsible for one-seventh of the total death rate of the world. It has been well called the "Captain of the men of death."

In 1913 British Columbia lost 429 of her people from tuberculosis; the City of Vancouver 128. At least five times this number are affected and are still with us. Apart from the amount of human suffering that these figures represent, the economic loss in dollars and cents to our country is enormous.

Tuberculosis is largely preventable.

These facts explain the existence of the **ANTI-TUBERCULOSIS SOCIETY OF BRITISH COLUMBIA** which was organized in 1904, previous to which little or nothing was being done.

The objects of this Society are briefly two (a) Cure, and (b) Prevention.

In 1906 the property at Tranquille was bought, consisting of about six hundred acres (upon which today stands the King Edward Sanatorium) and work was commenced in a reconstructed farm house. Today there is a fine group of buildings, accommodating about one hundred patients. Towards this property and these buildings the Government of British Columbia has contributed \$130,000.00, and the general public \$115,000.00.

It has cost for maintenance from 1906 to the end of 1913 about \$238,700.00, of which the Provincial Government has contributed \$79,000.00, and a balance of \$159,700.00 has been made up of grants from Municipalities and Cities in British Columbia, fees from patients, money received from auxiliary societies, and donations from the general public.

During these years 597 patients have passed through the Institution. Twenty-five of the cured patients have been traced since their discharge, and their earnings have amounted to \$61,000.00. It cost \$6,682.00 to restore these patients to health. Tuberculosis in its early stages is not only curable but it pays to cure it.



View of the King Edward Sanatorium, Tranquille, Kamloops, B. C.



Opening of King Edward Sanatorium, Kamloops, B. C., 1911.

Excellent work is being done in Vancouver by the Women's Association for the Prevention and Relief of Tuberculosis. This Society, with the assistance of the civic authorities, has a trained nurse whose whole time is taken up with the work of keeping in touch with city patients and their families, giving instruction, and supplying relief where necessary. The work being done by this Society embraces everything that its title indicates. Only this month a free clinic for the examining and treatment of cases has been opened in Vancouver under its auspices.

Most of our Sanatorium patients come from those who have little or no money. A large proportion of these patients pay nothing, in fact part of the problem is to know how to look after the families of some of these people while the patient is under treatment—a period often extending over months.

The monthly deficit at the Sanatorium amounts to about \$1,500.00. Under present conditions we cannot pay our bills.

Is this work to stop? Is the Institution to close?

No one who realizes what this Institution means to those who are afflicted and to those belonging to them, and certainly no one who has been to Tranquille and seen these people fighting for life and health can seriously contemplate such a step. It would be a tragedy. If the Sanatorium were to close its doors today about eighty of these people who have no money and no home would be turned out without health and with no place to go.

In the interest of those who are afflicted and for the protection of our people, the work must go on; and to this end we believe that the people have only to know these facts. It is to this work—to the saving and protection of our people—that your assistance this afternoon will go. Could any cause be better?





Artistes

MRS. COULTHARD	- - - - -	<i>Soprano</i>
MRS. ANTHONY	- - - - -	<i>Soprano</i>
MISS EILEEN MAGUIRE	- - - - -	<i>Contralto</i>
MR. R. HAMILTON EARLE	- - - - -	<i>Baritone</i>
MR. H. J. CAVE	- - - - -	<i>Tenor</i>
MR. GEORGE CHAFFEY	- - - - -	<i>Baritone</i>
MADAME CARAPATA	- - - - -	<i>Violin</i>
MISS MAUDE SCRUBY	- - - - -	<i>Violoncello</i>
MISS ELSIE ALEXANDER	- - - - -	<i>Pianoforte</i>
MISS MARGARET TILLY	- - - - -	<i>Violin</i>
MR. D. GREEN	- - - - -	<i>Harp</i>

Orchestra of Vancouver Choral and Orchestral Society

Under Directorship of
MR. FREDERICK J. DYKE.

Accompanists

MADAME CLARE-SUMNER,
MR. HENRY BARLOW

HEINTZMAN & CO. GRAND PIANO LENT BY
WALTER F. EVANS & CO.

FLORAL DECORATIONS SUPPLIED BY
BROWN BROS. & CO., LTD.

BUILDING PERFUMED FOR THE OCCASION BY
W. M. HARRISON & CO., LTD.

To all the above the Society's warmest thanks are tendered
for their voluntary assistance, and to the owner of the Orpheum
Theatre for the free use of the house, most generously given.

MR. J. F. MAGUIRE, *Honorary Organizer.*



***There is no Doubt But That You Are Inter-
ested in the Latest Jewellery Fashions***

¶ In our stock you will find the most select masterpieces in fashionable jewellery designs. Our Gold and Platinum exquisites will please and satisfy your good judgment. The master minds and expert artisans of the world are our servants, therefore, we can promise you satisfaction and assure you quality.

HENRY BIRKS AND SONS, LIMITED

JEWELLERS AND SILVERSMITHS

GEO. E. TROREY, Man. Dir.

Granville and Georgia Streets

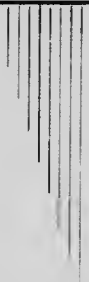
Vancouver, B. C.

Programme

1. ORCHESTRA—Minuetto and Presto *Haydn*
From Symphony No. 12; Bb Major.
2. VOCAL—Prologue from "Il Pagliacci" *Leoncavallo*
MR. GEORGE CHAFFEY.
3. VIOLONCELLO SOLO—"Kol Nidrei" *Max Bruch*
(This piece is grounded on Hebrew Melodies used in the Jewish Church.)
MISS MAUDE SCRUBY.
Accompanied by Madame C. Le-Sumner.
and Mr. D. Green, Harpist.

AN ALL SILK HOSE

SPECIAL AT \$1.50 A PAIR



Here is a stocking that will appeal strongly to those who appreciate sterling quality at very moderate cost. This line of hose comes in a beautiful finish and is strongly recommended for giving good service. Offered in about 20 new shades, as well as black, white or tan. Made with a silk garter top, which is reinforced with lisle thread. The sole is double silk lisle, and the heels and toes are amply protected. A splendid stocking in every particular, and excellent value at \$1.50 a pair.

Gordon S. Spedale
LIMITED

Join Our Piano Club

And you will start to own a High Grade Piano. This Piano is usually sold for \$400. Become a member of our Club and you secure a Club Piano for \$288, \$10 cash and \$1.90 a week.

Walter F. Evans & Co.

526 HASTINGS ST. W.
VANCOUVER, B. C.

Sole Agents

Heintzman & Co.

Beckstein & Enns



4. VOCAL—"Onaway, Awake, Beloved".....*Coleridge-Taylor*
(From "*Hiawatha's Wedding Feast.*")
With Orchestral Accompaniment.
MR. H. J. CAVE.
5. VOCAL—"Non E Ver"*Tito Mattei*
MRS. E. ANTHONY.
6. VIOLIN SOLO—Andante Allegro Molto Vivace.....*Mendelssohn*
(From *Concerto in E Minor.*)
MISS MARGARET TILLY.

Store
48 Hastings St. E. Phone, S. 988

Branch Store
782 Granville St. Phone, S. 9513

Also at Victoria, B.C.

Brown Bros. & Co.
LIMITED

Florists and Nurserymen

Vancouver, B.C.

Greenhouses

21st. Ave. & Main St. Phone Fair. 796
Hammond, B.C. Long Dist. Phone 97

Take Prescriptions to

Burns & Cairns

Quick Delivery

DRUGGISTS



732 GRANVILLE STREET
Opposite Orpheum Theatre

IN THE BLOCK WITH THE CLOCK

Comfort and Health

For Baby

Our *Collapsible Go-Carts* possess all practical improvements and offer mothers the utmost in value and convenience—offer baby comfort, health and happiness. Please visit our show rooms.

\$5.75 to \$29.50

Baby Car Specialists

(G. S. SHAW & CO.)

904 Robson St. Opp. Court House



7. VOCAL—"Serenata" (*Angel's Serenade*)..... *Braga*
With Violoncello Obligato by Miss Scruby.
MISS EILEEN MAGUIRE.
8. PIANOFORTE SOLO—(a) *Polonaise in E Minor*..... *MacDowell*
(b) "Nocturne," Op. 27, No. 2..... *Chopin*
MISS ELSIE ALEXANDER.
9. VOCAL—"Ave Maria" *Bach-Guonod*
With Violin Obligato by Madame Carapata.
MRS. COULTHARD.
10. VIOLIN SOLO—"Romance," Op. 26..... *Svendsen*
With Orchestral Accompaniment.
MADAME CARAPATA.

R. C. PURDY'S LIMITED

FAMOUS CHOCOLATES
AND
HOME-MADE CANDIES

Phone
Seymour 9020

750 Robson Street
715 Georgia Steet

GEORGIA PHARMACY

Day and Night Drug Service



Phones, Sey. 1050 1051 Cor. Georgia and Granville Sts.

11. VOCAL—"The Lost Chord"Sullivan
MR. R. HAMILTON EARLE.
12. ORCHESTRA—"Valse Triste"Sibelius
13. VOCAL DUET—"I Would That My Love".....Mendelssohn
MISS EILEEN MAGUIRE and MR. GEO. CHAFFEY.

"GOD SAVE THE KING."
(Audience joining.)

*"God save our gracious King,
Long live our noble King,
God save the King!
Send him victorious,
Happy and glorious,
Long to reign over us,
God save the King!"*

I. Luxenberg

Expert Ladies'
Tailor



Phone, Seymour 7285

721 Robson St. Vancouver

**Mission Confectionery
Company, Limited**

*Bakers, Confectioners
:: and Caterers ::*

Lunches put up for
Picnic Parties

722 Granville St. Vancouver



*The First Choice of
Refined People*

*Cascade
Beer*

Has the call in all the best Clubs, Cafes and Hotels,
and especially in the best Homes, where
good bottled beer is appreciated

In Dark Brown Bottles

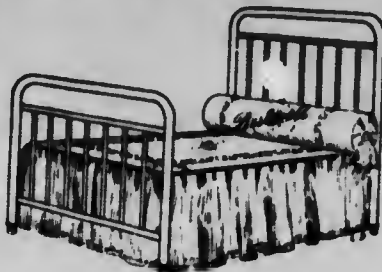
Pints - - - - \$1.00

Quarts - - - - \$2.00

Phone any Liquor Dealer

VANCOUVER BREWERIES
LIMITED

**We Manufacture a Line of
Beds that are
Guaranteed
For 20 Years**



**We also Manufacture a Full Line of Furniture
and Upholstered Goods**

Demand "Restmore" and Boost Local Industry

Restmore Manufacturing Co., Ltd.
VANCOUVER **VICTORIA**

***London & British North America
Company, Limited***

With which is incorporated

Mahon, McFarland & Procter, Ltd.

FINANCIAL, INSURANCE AND REAL
ESTATE AGENTS. MORTGAGE LOANS.

:: :: REAL ESTATE VALUERS :: :: ::

Paid-up Capital \$2,500,000.00 (£500,000)

LONDON BUILDING
626 PENDER STREET, WEST
Vancouver, B. C.

EDMONTON, Alberta
43-45 Jasper Avenue, East

LONDON, England
Pinner's Hall, Austin Friars, E.C.



