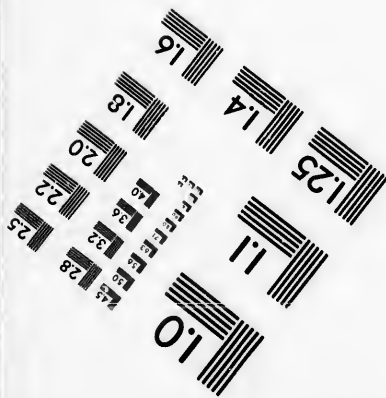
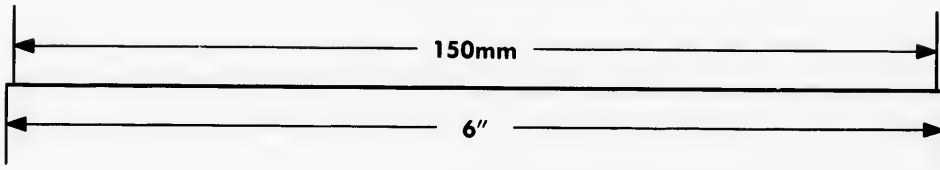
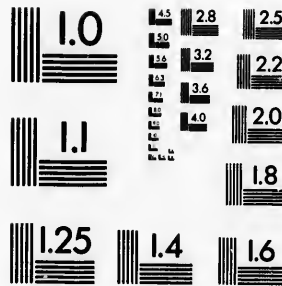
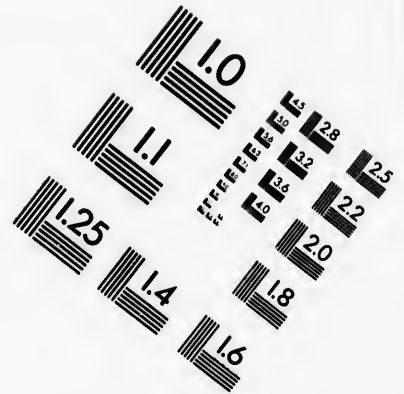
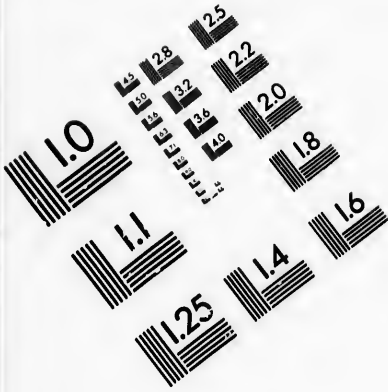
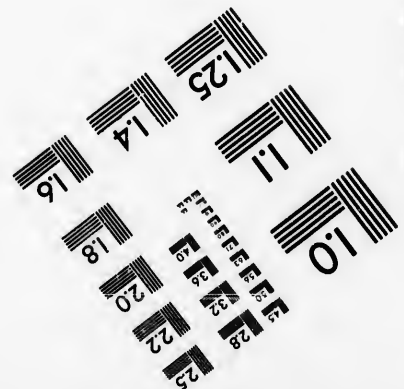


IMAGE EVALUATION TEST TARGET (MT-3)



APPLIED IMAGE, Inc
1653 East Main Street
Rochester, NY 14609 USA
Phone: 716/482-0300
Fax: 716/288-5989

© 1993, Applied Image, Inc., All Rights Reserved



**CIHM
Microfiche
Series
(Monographs)**

**ICMH
Collection de
microfiches
(monographies)**



Canadian Institute for Historical Microreproductions / Institut canadien de microreproductions historiques

© 1993

The Institute has attempted to obtain the best original copy available for filming. Features of this copy which may be bibliographically unique, which may alter any of the images in the reproduction, or which may significantly change the usual method of filming, are checked below.

L'Institut a tenté d'obtenir la meilleure copie originale disponible pour la pelliculage. Les caractéristiques de cette copie qui peuvent être bibliographiquement uniques, qui peuvent modifier certaines des images dans la reproduction, ou qui peuvent changer de manière significative la méthode habituelle de pelliculage, sont indiquées ci-dessous.

- Coloured covers/
Couverture de couleur
- Covers damaged/
Couverture endommagée
- Covers restored and/or laminated/
Couverture restaurée et/ou pelliculée
- Cover title missing/
Le titre de couverture manque
- Coloured maps/
Cartes géographiques en couleur
- Coloured ink (i.e. other than blue or black)/
Encre de couleur (i.e. autre que bleue ou noire)
- Coloured plates and/or illustrations/
Planches et/ou illustrations en couleur
- Bound with other material/
Relié avec d'autres documents
- Tight binding may cause shadows or distortion
along interior margin/
La reliure serrée peut causer de l'ombre ou de la
distorsion le long de la marge intérieure
- Blank leaves added during restoration may appear
within the text. Whenever possible, these have
been omitted from filming/
Il se peut que certaines pages blanches ajoutées
lors d'une restauration apparaissent dans le texte,
mais, lorsque cela était possible, ces pages n'ont
pas été filmées.
- Additional comments: /
Commentaires supplémentaires:

This item is filmed at the reduction ratio checked below/
Ce document est filmé au taux de réduction indiqué ci-dessous.

10X				14X				18X				22X
12X				16X				20X				

The copy filmed here has been reproduced thanks to the generosity of:

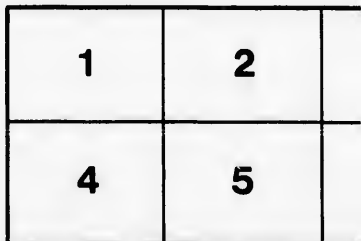
York University
Toronto
Scott Library

The images appearing here are the best quality possible considering the condition and legibility of the original copy and in keeping with the filming contract specifications.

Original copies in printed paper covers are filmed beginning with the front cover and ending on the last page with a printed or illustrated impression, or the back cover when appropriate. All other original copies are filmed beginning on the first page with a printed or illustrated impression, and ending on the last page with a printed or illustrated impression.

The last recorded frame on each microfiche shall contain the symbol \rightarrow (meaning "CONTINUED"), or the symbol ∇ (meaning "END"), whichever applies.

Maps, plates, charts, etc., may be filmed at different reduction ratios. Those too large to be entirely included in one exposure are filmed beginning in the upper left hand corner, left to right and top to bottom, as many frames as required. The following diagrams illustrate the method:



L'exe
géné

Les in
plus g
de la
confo
filma

Les e
papie
par le
derni
d'imp
plat,
origin
premi
d'imp
la der
empr

Un de
derni
cas: l
symb

Les c
filmé
Lorsq
repro
de l'a
et de
d'ima
illustr

ced thanks

L'exemplaire filmé fut reproduit grâce à la générosité de:

York University
Toronto
Scott Library

quality
legibility
the

Les images suivantes ont été reproduites avec le plus grand soin, compte tenu de la condition et de la netteté de l'exemplaire filmé, et en conformité avec les conditions du contrat de filmage.

are filmed
ing on
d impres-
te. All
ng on the
mpres-
a printed

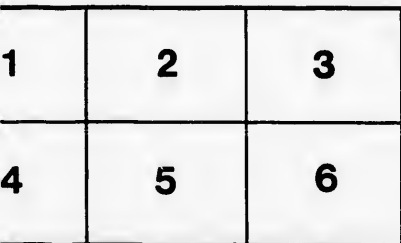
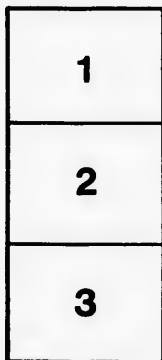
Les exemplaires originaux dont la couverture en papier est imprimée sont filmés en commençant par le premier plat et en terminant soit par la dernière page qui comporte une empreinte d'impression ou d'illustration, soit par le second plat, selon le cas. Tous les autres exemplaires originaux sont filmés en commençant par la première page qui comporte une empreinte d'impression ou d'illustration et en terminant par la dernière page qui comporte une telle empreinte.

iche
"CON-
END"),

Un des symboles suivants apparaîtra sur la dernière image de chaque microfiche, selon le cas: le symbole \rightarrow signifie "A SUIVRE", le symbole ∇ signifie "FIN".

d at
ge to be
mad
left to
s as
ate the

Les cartes, planches, tableaux, etc., peuvent être filmés à des taux de réduction différents. Lorsque le document est trop grand pour être reproduit en un seul cliché, il est filmé à partir de l'angle supérieur gauche, de gauche à droite, et de haut en bas, en prenant le nombre d'images nécessaire. Les diagrammes suivants illustrent la méthode.



1896
1000

PRICE 10.

MURRAY'S BROADSIDES No. 4



Laurier or Tupper, Which ?



Sir Charles Tupper, Baronet,
Some call him Old Sawbones,
Aspires to be our Premier
But for cheers he'll get groans.

He put McKenzie Bowell out,
A better man than he,
And what the Tories see in him
Has always puzzled me.

He talks of John McDonald,
And would like to fill his shoes ;
But he'll never be our Premier
Till all tyrants get their dues.

He has two sets of speeches
For the west and for the east,
So let me as a question—
"Is the owl a bird or beast ?"

You must have heard the story
Of the owl, the birds and cats,
So when Tupper toots his horn
We'll answer back, "Oh rats."

I read a lot of speeches,
And heard some in my time,
But for pure nastiness
He beats the serpent's slime.

You all know the manner
Of campaign in ninety-six,
How Tupper with the clergy
Tried Laurier to fix.

But as no one believed him
Or his talk about the schools,
You'd think he'd learn the lesson
That the people are not fools.

But now he starts again
And he's got another cry
To fool the French Canadians,
But they wink the other eye.

(OVER)

When he's with the Orangemen
He sports the yellow leaf,
But when he's with the Romans
He displays another "brief."

This method seems to me, too much
The methods of a thief,
And those who take such methods
Always come to grief.

Last year he raised a riot,
He and Dal'by with the *Star*,
And managed by buffoonery
Our local peace to mar.

He then accused the Frenchmen
Of being disloyal to the core
He now finds fault with Laurier
On quite another score.

He found some fault with Laurier
When speaking at Quebec,
And said Laurier was too British,
So he should get a check.

I could excuse a Frenchman
And some others talk like this,
But from either Scotch or English
Such talk stinks worse than —*

He must surely think we are asses
If we cannot guess his scheme,
But by and by I think he'll find
That he only had a dream.

The Liberals are not all faultless,
But they have a splendid chief,
He is a gentleman and scholar
To the best of my belief.

If I am not much mistaken
Laurier is of Norman stock,
And is constituted by nature
To be leader of the flock.

He dont have to condescend
To hypocrisy and cant,
Trying to bulldoze the people
By blatherskiting rant.

* If you cannot fill in the blank, ask for a key.

Copyrighted in 1900, by Norman Murray,
21 Beaver Hall Hill, Montreal.

PRICE 1 CENT.

(OVER)

