

**CIHM
Microfiche
Series
(Monographs)**

**ICMH
Collection de
microfiches
(monographies)**



Canadian Institute for Historical Microreproductions / Institut canadien de microreproductions historiques

© 1998

Technical and Bibliographic Notes / Notes techniques et bibliographiques

The Institute has attempted to obtain the best original copy available for filming. Features of this copy which may be bibliographically unique, which may alter any of the images in the reproduction, or which may significantly change the usual method of filming are checked below.

- ☐ Coloured covers / Couverture de couleur
- ☐ Covers damaged / Couverture endommagée
- ☐ Covers restored and/or laminated / Couverture restaurée et/ou pelliculée
- ☐ Cover title missing / Le titre de couverture manque
- ☐ Coloured maps / Cartes géographiques en couleur
- ☐ Coloured ink (i.e. other than blue or black) / Encre de couleur (i.e. autre que bleue ou noire)
- ☐ Coloured plates and/or illustrations / Planches et/ou illustrations en couleur
- ☐ Bound with other material / Relié avec d'autres documents
- ☐ Only edition available / Seule édition disponible
- ☐ Tight binding may cause shadows or distortion along interior margin / La reliure serrée peut causer de l'ombre ou de la distorsion le long de la marge intérieure.
- ☐ Blank leaves added during restorations may appear within the text. Whenever possible, these have been omitted from filming / Il se peut que certaines pages blanches ajoutées lors d'une restauration apparaissent dans le texte, mais, lorsque cela était possible, ces pages n'ont pas été filmées.
- ☐ Additional comments / Commentaires supplémentaires:

L'Institut a microfilmé le meilleur exemplaire qu'il lui a été possible de se procurer. Les détails de cet exemplaire qui sont peut-être uniques du point de vue bibliographique, qui peuvent modifier une image reproduite, ou qui peuvent exiger une modification dans la méthode normale de filmage sont indiqués ci-dessous.

- ☐ Coloured pages / Pages de couleur
- ☐ Pages damaged / Pages endommagées
- ☐ Pages restored and/or laminated / Pages restaurées et/ou pelliculées
- ☒ Pages discoloured, stained or foxed / Pages décolorées, tachetées ou piquées
- ☐ Pages detached / Pages détachées
- ☒ Showthrough / Transparence
- ☐ Quality of print varies / Qualité inégale de l'impression
- ☐ Includes supplementary material / Comprend du matériel supplémentaire
- ☐ Pages wholly or partially obscured by errata slips, tissues, etc., have been refilmed to ensure the best possible image / Les pages totalement ou partiellement obscurcies par un feuillet d'errata, une pelure, etc., ont été filmées à nouveau de façon à obtenir la meilleure image possible.
- ☐ Opposing pages with varying colouration or discolourations are filmed twice to ensure the best possible image / Les pages s'opposant ayant des colorations variables ou des décolorations sont filmées deux fois afin d'obtenir la meilleure image possible.

This item is filmed at the reduction ratio checked below /
Ce document est filmé au taux de réduction indiqué ci-dessous.

10x		14x		18x		22x		26x		30x	
				✓							
	12x		16x		20x		24x		28x		32x

The copy filmed here has been reproduced thanks to the generosity of:

National Library of Canada

The images appearing here are the best quality possible considering the condition and legibility of the original copy and in keeping with the filming contract specifications.

Original copies in printed paper covers are filmed beginning with the front cover and ending on the last page with a printed or illustrated impression, or the back cover when appropriate. All other original copies are filmed beginning on the first page with a printed or illustrated impression, and ending on the last page with a printed or illustrated impression.

The last recorded frame on each microfiche shall contain the symbol \rightarrow (meaning "CONTINUED"), or the symbol ∇ (meaning "END"), whichever applies.

Maps, plates, charts, etc., may be filmed at different reduction ratios. Those too large to be entirely included in one exposure are filmed beginning in the upper left hand corner, left to right and top to bottom, as many frames as required. The following diagrams illustrate the method:

1	2	3
---	---	---

1	2
4	5

L'exemple filmé fut reproduit grâce à la générosité de:

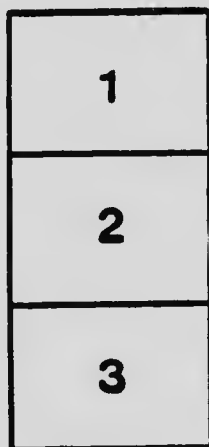
Bibliothèque nationale du Canada

Les images suivantes ont été reproduites avec le plus grand soin, compte tenu de la condition et de la netteté de l'exemple filmé, et en conformité avec les conditions du contrat de filmage.

Les exemplaires originaux dont la couverture en papier est imprimée sont filmés en commençant par le premier plat et en terminant soit par la dernière page qui comporte une empreinte d'impression ou d'illustration, soit par le second plat, selon le cas. Tous les autres exemplaires originaux sont filmés en commençant par la première page qui comporte une empreinte d'impression ou d'illustration et en terminant par la dernière page qui comporte une telle empreinte.

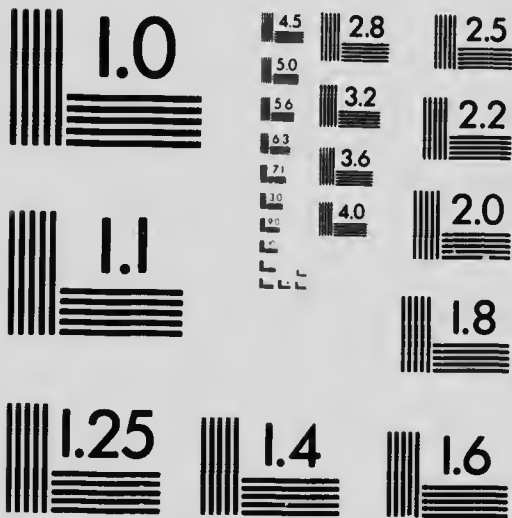
Un des symboles suivants apparaît sur la dernière image de chaque microfiche, selon le cas: le symbole ➡ signifie "A SUIVRE", le symbole ▼ signifie "FIN".

Les cartes, planches, tableaux, etc., peuvent être filmés à des taux de réduction différents. Lorsque le document est trop grand pour être reproduit en un seul cliché, il est filmé à partir de l'angle supérieur gauche, de gauche à droite, et de haut en bas, en prenant le nombre d'images nécessaire. Les diagrammes suivants illustrent la méthode.



MICROCOPY RESOLUTION TEST CHART

(ANSI and ISO TEST CHART No. 2)



APPLIED IMAGE Inc

1653 East Main Street
Rochester, New York 14609 USA
(716) 482 - 0300 - Phone
(716) 288 - 5989 - Fax

Suggested Plan for Local Union Churches

In affiliation with either

**The Presbyterian Church
The Methodist Church
or the
Congregational Union
of Canada**

As agreed upon by their respective committees on Local Union Churches meeting in joint session, Jan. 4, 1917, pending the union of the three Churches.

100

100

SUGGESTED PLAN FOR AN AFFILIATED LOCAL UNION CHURCH

The Committees on Local Union Churches, of the Congregational, Methodist and Presbyterian Churches, met in joint session in the Board Room, Wesley Buildings, Toronto, on Thursday, January 4th, 1917, at 10 a.m.

The members of the Committees were as follows:

Presbyterian Committee on Co-operation and Union Churches—Rev. Professor A. B. Baird, D.D., Moderator of the General Assembly, Winnipeg, Convener; President R. A. Falconer, C.M.G., Toronto; Rev. Principal A. Gandier, D.D., LL.D., Toronto; Rev. W. G. Wallace, D.D., Toronto; Dr. Hamilton Cassels, K.C., Toronto; Mr. J. K. Macdonald, Toronto; Mr. Justice Sutherland, Toronto; Rev. D. R. Drummond, D.D., Hamilton; Rev. W. J. Clark, D.D., Montreal; Rev. W. T. Herridge, D.D., Ottawa; Rev. G. C. Pidgeon, D.D., Toronto; Rev. J. H. Edmison, B.A., Toronto; President Walter C. Murray, LL.D., Saskatoon; Rev. R. Douglas Fraser, D.D., Acting Secretary, Toronto.

Methodist Local Union Church Committee—Rev. S. D. Chown, D.D., Toronto; Rev. T. A. Moore, D.D., Toronto; Rev. C. E. Manning, B.A., Toronto; Rev. J. J. Ferguson, D.D., Toronto; Rev. J. A. Long, Ph.D., Weston; Mr. F. W. Winter, Toronto; Honorable E. J. Davis, Newmarket; Rev. Jas. Allen, M.A., Toronto; Mr. N. W. Rowell, Toronto; Rev. F. L. Brown, Orillia; Rev. W. A. Cooke, D.D., Virden; Rev. Oliver Darwin, D.D., Regina; Rev. J. H. Riddell, D.D., Edmonton; Rev. T. C. Buchanan, Edmonton.

The Committee on Co-operation of the Congregational Union—Rev. Hugh Pedley, D.D., Montreal; Rev. Frank J. Day, D.D., Toronto; Rev. William T. Gunn, D.D., Toronto.

In the judgment of this Committee the principle of union in different localities, until the organic union of the negotiating Churches is consummated, should find expression in the organization of charges under the plan of co-operation jointly adopted by the negotiating Churches rather than by the organization of independent Local Union Churches. Where, however, for any reason it is found impracticable to organize under the plan of co-operation, the following suggestions are made with reference to the organization of Local Union Churches in affiliation with either the Presbyterian Church, the Methodist Church or the Congregational Union of Canada.

I. By an affiliated charge is meant a local church or churches under the care of one pastor, organized on the Basis of Union as agreed upon by the negotiating denominations and looking to one of these denominations for spiritual guidance and supervision and contributing to the missionary and connexional funds of that denomination.

II. That the ministers of the three negotiating Churches be requested to give immediate notice of any movement towards the formation of a local Union Church in their district to the authorities of their respective denominations so that conference may be held and advice given.

III. Congregations which, after conference with the authorities of their respective Church desire to form a united charge in affiliation with one of the negotiating Churches, shall present a petition, signed

by communicant members in good standing, to the Church Courts of the district (the Presbytery, District Meeting or Association), which bodies shall, if they approve of the prayer of the petition, appoint representatives to hold a joint meeting in order that said prayer may be considered, and, if the way be clear, carried into effect. Said representatives shall examine the financial circumstances of each charge so organized, and where necessary advise the officials how to maintain the funds of the church and concerning the fulfilment of all their financial obligations, and shall make a report upon these questions to the respective Church Courts above mentioned.

IV. As soon as a roll of membership is formed and an organization effected the united charge shall decide, at a meeting called for the purpose, by a majority vote of the communicants, with which of the negotiating Churches it shall be affiliated, and shall take steps to carry into effect such affiliation.

V. Recognizing that such charges will be incorporated in the proposed United Church of Canada when organic union is effected, the name of the local charge shall be "The United Church of (name of place) in affiliation with the (the Presbyterian Church, the Methodist Church or the Congregational Union of Canada.)"

VI. The Basis of Union already adopted by the negotiating Churches shall, so far as it is practicable, be the basis on which such charges shall be organized and administered.

(Method of appointment of Local Boards, with duties, will be found in the Basis of Union, Section II. B, on Polity, as printed on page 9 of this pamphlet).

VII. The members of the united charge shall be the members of the negotiating Churches and such others as may afterwards become members.

VIII. The minister shall be chosen by the members of the united charge at a meeting called for the purpose and shall be secured from among the ministers in good standing in the three negotiating Churches. All ministers from any of the negotiating Churches, serving such united charges, shall be responsible for their character and ministerial standing to the denomination to which they belong and shall have, while serving such charges, all the usual rights and privileges of a minister of that denomination. In the discharge of his duties as pastor he shall be under the supervision of the Courts of the Church with which his charge is affiliated.

IX. It is recommended that representatives of united charges be given the privileges of corresponding members in the Courts of the Church with which such charges are affiliated.

X. The denomination with which the united charge is affiliated shall have the supervision of such charge.

(a). The united charge shall report annually to the Presbytery, District Meeting or Association of the denomination with which it is affiliated.

(b). The charge should be visited regularly.

(c). It is desirable that representatives should be sent to promote liberality toward missionary and connexional funds.

(d). Contributions for missions and other connexional funds, including the amounts raised by Women's Societies, should, as a rule, be sent to the denomination with which the charge is affiliated.

(e). It is recommended that the returns

of the united charges under the care of the negotiating Churches shall be recorded separately in the annual schedules of the denomination with which they are affiliated.

XI. All transactions in regard to property previously held in the name of any of the negotiating Churches must be carried through in accordance with the regulations of the denomination in whose name it has been held.

(Signed by)

A. B. Baird,

Moderator of the General Assembly of the Presbyterian Church of Canada, Chairman.

S. D. CHOWN,

General Superintendent of the Methodist Church of Canada, Chairman.

W. T. GUNN,

Secretary of the Congregational Union of Canada, Secretary.

Addresses of Home Mission Secretaries
Presbyterian Church—

Rev. J. H. Edmison, B.A., Secretary,
Board of Home Missions and Social
Service, 434 Confederation Life Building,
Toronto.

Methodist Church—

Rev. James Allen, General Secretary of
the Home Department, 299 Queen St.
W., Toronto.

Congregational Church—

Rev. W. T. Gunn, D.D., Secretary Congregational Missionary Society, 33
Victor Ave., Toronto.

Appendix. Section II. B on Polity of
the Basis of Union for the proposed
United Church of Canada:

9. The liberty of the pastoral charge

shall be recognized to the fullest extent compatible with:

(a) The oversight of the spiritual interests of the charge by the minister (or ministers) and a body of men specially chosen and set apart or ordained for that work, who shall jointly constitute the session;

(b) The efficient co-operation of the representatives of the various departments of the work of the charge by means of a meeting to be held at least quarterly;

(c) The hearty co-operation of the various pastoral charges in the general work of the Church, and

(d) The exercise by the higher governing bodies or courts of their powers and functions, hereinafter set forth.

10. New pastoral charges or local churches shall be formed with the consent of a Presbytery by persons residing within its bounds, who declare their adherence to the principles of The United Church, and their desire for the formation of such charge or church. Missions may be organized as pastoral charges by Presbytery of its own motion, or on the suggestion of the Missionary Superintendent or the Minister, under such regulations as the General Council may pass.

Before sanctioning the formation of a pastoral charge or local church, the Presbytery shall be required to hear and consider the representations of any pastoral charge that may be affected by the proposed action.

11. (a) The members of the Church entitled to all church privileges are those who, on a profession of their faith in Jesus Christ and obedience to Him, have been received into full membership. The children of such persons and all baptized children are members of the Church, and it is their duty and privilege, when they reach

the age of discretion, to enter into full membership. Admission to full membership, and granting of certificates of removal, shall be by the action of the Session, and by the action of those in full membership where desired by the pastoral charge.

(b) The members of a local church who are entitled to vote at all meetings are persons in full membership, whose names are on the roll of the church. With the consent of these, adherents who contribute regularly to the support of the Church may vote on temporal matters.

12. The members of a local church shall meet annually and more frequently if they deem it advisable.

13. The Session shall have oversight of the spiritual interests of the pastoral charge. The management of its temporal and financial affairs shall be entrusted to a Committee of Stewards. The Official Board, consisting of the Session and Committee of Stewards, with representatives in full church membership, of such other departments of church work as may be agreed upon by the General Council, shall meet quarterly, and more frequently if they deem it advisable, for the consideration of matters of joint interest.

14. The members of the Session, other than the Minister, shall be chosen by those in full church membership, and shall hold office under regulations to be passed by the General Council.

15. (a) It shall be the duty of the Session to have the oversight of:

(1) The admission of persons into full membership, and the granting of certificates of removal.

(2) The conduct of members, with power to exercise discipline.

(3) The administration of the sacraments.

(4) The religious training of the young, and the organization of meetings for Christian fellowship, instruction and work.

(5) The order of public worship, including the service of praise and the use of the church edifice.

(6) The care of the poor, and the visiting of the sick.

(b) It shall also be its duty:

(7) To receive and judge petitions, etc., from members.

(8) To transmit petitions, appeals, etc., to Presbytery.

(9) To recommend suitable laymen to Presbyteries for license to preach.

(10) To recommend suitable candidates for the ministry.

16. The stewards shall be chosen by the local church, and, wherever practicable, should be persons in full membership.

It shall be the duty of the Committee of Stewards to secure contributions for the purposes of the local church, and to disburse the moneys received for these purposes.

17. It shall be the duty of the Official Board:

(1) To secure contributions for missionary and other general objects of the Church.

(2) To select representatives, in full Church membership, of the pastoral charge to the Presbytery.

(3) To submit to the pastoral charge or local church for its consideration reports on life and work, including a full statement

of receipts and expenditures, of indebtedness and of estimates for the ensuing year.

(4) To transmit from the pastoral charge, through the Presbytery, to the Settlement Committee, representations concerning the pastoral relation.

(5) To attend to matters affecting the pastoral charge not assigned to any of the other bodies.

18. All lands, premises and property acquired for the use of a local church or a pastoral charge of The United Church shall be held, used and administered under the trusts of the above Model Trust Deed (See "Polity" par. 6).



