

Technical and Bibliographic Notes / Notes techniques et bibliographiques

The Institute has attempted to obtain the best original copy available for filming. Features of this copy which may be bibliographically unique, which may alter any of the images in the reproduction, or which may significantly change the usual method of filming, are checked below.

L'Institut a microfilmé le meilleur exemplaire qu'il lui a été possible de se procurer. Les détails de cet exemplaire qui sont peut-être uniques du point de vue bibliographique, qui peuvent modifier une image reproduite, ou qui peuvent exiger une modification dans la méthode normale de filmage sont indiqués ci-dessous.

- Coloured covers/
Couverture de couleur
- Covers damaged/
Couverture endommagée
- Covers restored and/or laminated/
Couverture restaurée et/ou pelliculée
- Cover title missing/
Le titre de couverture manque
- Coloured maps/
Cartes géographiques en couleur
- Coloured ink (i.e. other than blue or black)/
Encre de couleur (i.e. autre que bleue ou noire)
- Coloured plates and/or illustrations/
Planches et/ou illustrations en couleur
- Bound with other material/
Relié avec d'autres documents
- Tight binding may cause shadows or distortion along interior margin/
La reliure serrée peut causer de l'ombre ou de la distorsion le long de la marge intérieure
- Blank leaves added during restoration may appear within the text. Whenever possible, these have been omitted from filming/
Il se peut que certaines pages blanches ajoutées lors d'une restauration apparaissent dans le texte, mais, lorsque cela était possible, ces pages n'ont pas été filmées.

- Coloured pages/
Pages de couleur
- Pages damaged/
Pages endommagées
- Pages restored and/or laminated/
Pages restaurées et/ou pelliculées
- Pages discoloured, stained or foxed/
Pages décolorées, tachetées ou piquées
- Pages detached/
Pages détachées
- Showthrough/
Transparence
- Quality of print varies/
Qualité inégale de l'impression
- Continuous pagination/
Pagination continue
- Includes index(es)/
Comprend un (des) index

Title on header taken from: /
Le titre de l'en-tête provient:

- Title page of issue/
Page de titre de la livraison
- Caption of issue/
Titre de départ de la livraison
- Masthead/
Générique (périodiques) de la livraison

- Additional comments: /
Commentaires supplémentaires:

Pages 854, 864 are incorrectly numbered pages 844, 86.

This item is filmed at the reduction ratio checked below /
Ce document est filmé au taux de réduction indiqué ci-dessous.

10X	12X	14X	16X	18X	20X	22X	24X	26X	28X	30X	32X
									✓		

LYMAN BROS. & CO.,
 WHOLESALE
CHEMISTS AND DRUGGISTS.
 Every requisite for the Drug Trade promptly supplied.

TORONTO, ONT.
MOORE'S CHINA HALL
 Direct Importers of

China, Glass AND Earthenware
 SILVER-PLATED WARE,
 Lamps, Cutlery and General House Furnishings

MOORE & CO., Proprietors,
 Wholesale Warehouse, 21 Albert St.
 Office and Sample Room, 430 Main St. **WINNIPEG**
 Orders by Mail will receive prompt attention.

RUBLEE, RIDDELL & CO.,
Commission Merchants,
 AND IMPORTERS OF
Green and Dried Fruits,
150 WEN STREET, WINNIPEG

EGGS !!
J. Y. GRIFFIN & CO
PROVISION MERCHANTS,
 are now in the Market for an unlimited supply of FRESH EGGS, delivered at their Warehouse or any point on Railway. Highest market price. Correspondence solicited.
64 & 66 McDERMOTT ST., WINNIPEG.
 Close prices to Trade on Hams, Bacon, Lard, Butter, etc.

J. S. CARVETH & CO.,
PORK PACKERS
COMMISSION MERCHANTS,
 General Produce Dealers. Correspondence solicited.
Princess St., Opera House Block, Winnipeg

CHAS. DAVIDSON & CO.,
 IMPORTERS AND DEALERS IN
SADDLERY AND
GARRIAGE HARDWARE
13 FRONT ST. W., TORONTO

Andrew Allan, President. John McKechnie, Superintendent
 F. H. Brydges, Vice-President. H. H. Williams, Sec.-Treas.
THE VULCAN IRON COMPANY,
 OF MANITOBA, (LIMITED),
BRASS & IRON FOUNDERS,
 Light and Heavy Forgings, Engine and Boiler Work, Millwrighting,
GENERAL BLACKSMITHING,
 Kinds of Machinery.
POINT DOUGLAS AV., WINNIPEG

MERCHANTS' BANK OF CANADA
 Capital 25,700,200
 Rest 1,700,000
HEAD OFFICE, - - MONTREAL.

ANDREW ALLAN, President.
 ROBT. ANDERSON, Esq., Vice-President.
 GEORGE HAGUE, General Manager.
BRANCHES IN ONTARIO AND QUEBEC.
 Belleville, Ingersoll, Ottawa, Stratford,
 Berlin, Kinrossville, Owen Sound, St. John's, Que.,
 Brantford, Kingston, Perth, St. Thomas,
 Chatham, London, Prescott, Toronto
 Galt, Montreal, Quebec, Walka
 Gananoque, Mitchell, Renfrew,
 Hamilton, Napawa, Sherbrooke, Que.
BRANCHES IN MANITOBA, WINNIPEG, BRANDON.
BANKS IN GREAT BRITAIN London Glasgow Edinburgh and other ports The Hydro-Static Bank Limited, Liverpool, Commercial Bank of Liverpool.
AGENTS IN NEW YORK—61 Wall Street, Messrs. Henry Hague and John B. Hart, Jr., Agents.
BANKERS IN THE UNITED STATES—New York, Bank of New York, N.B.A.; Boston, Merchants' National Bank, Chicago, American Exchange National Bank, St. Paul, Minn., First National Bank, Detroit, First National Bank, Buffalo, Bank of Buffalo, San Francisco, Anglo-California Bank.
 A general banking business transacted. Letters of Credit issued, available in China, Japan and other foreign countries.

BANK OF BRITISH NORTH AMERICA.
 INCORPORATED BY ROYAL CHARTER.
 Paid-up Capital £1,000,000 Stg.
 LONDON OFFICE: 3 Clements Lane, Lombard Street, E.C.
 COURT OF DIRECTORS—J. H. Bessie, H. J. B. Kendall, John James, Walter J. Kingsford, Henry K. Farrer, Frederick Lubbock, Richard H. Glyn, Geo. D. Whistman, E. A. Hoare, J. Murray Robertson.
 A. G. WALLIS—Secretary.
 Head Office in Canada—St. James St., Montreal.
 R. H. Grindley, - - - General Manager.

Branches and Agencies in Canada—London, Kingston, Fredericton, N.B., Montreal, Quebec, Halifax, N.S., Paris, Montreal, Victoria, B.C., Hamilton, Quebec, Vancouver, B.C., Toronto, St. John, N.B., Winnipeg, Man.
 H. M. BREEDON, MANAGER, MAIN STREET, WINNIPEG.
 Agents in the United States.—New York—D. A. McTavish and H. Stikeman, AGTS. San Francisco—W. Lawson and J. C. Welsh, AGTS. London Bankers—The Bank of England—Messrs. Glyn & Co.
 Foreign Agents—Liverpool, Bank of Liverpool, Australia, Union Bank of Australia, New Zealand, Union Bank of New Zealand, India, China and Japan a chartered Mercantile bank of India, London and China, Agra bank, (limited), West India, Colonial bank, Paris, Messrs. Marechal, Krauss et Cie. Lyons, Credit Lyonnais.
 Issue Circular Notes for Travellers, available in all parts of the world.

"BUFFALO"
 Cook Stoves Ranges,
 Heating, Hall and Parlor Stoves,
 Farmers' Boilers, etc.
 A Splendid Line of Well Finished and Well Mounted Stoves, of First Class Value.

H. R. IVES & CO.
 MANUFACTURERS,
MONTREAL.
 New Catalogue supplied to the Trade on application.

A. C. FREEBORN,
 Wholesale Dealer in
WINES, LIQUORS
AND CIGARS,
VIBDEN, MAINTOBA.

Mitchell Drug Company
WHOLESALE DRUGS,
 17 Owen Street, - - WINNIPEG.
 A Full Assortment of Drugs, Patent Medicines and Sundries at Lowest Prices.
 CORRESPONDENCE SOLICITED.



THE UNION INJECTOR.

THE BEST known appliance for feeding all kinds of steam boilers.
 will lift water 25 feet.
 Manufactured by
R. Mitchell and Co
 St Peter & Craig Sts
MONTREAL, P.Q

McBEAN BROS.,
 CITY HALL SQUARE,
WINNIPEG.
 A. G. McBEAN, P.O. Box 1299 Montreal.
Commission Merchants.
 AND EXPORTERS OF
GRAIN & PRODUCE.

NOTHING LIKE LEATHER.
W. N. JOHNSTON & CO.,
 Importers and Dealers in
Leather, Findings, Plasterers' Hair
HIDES AND OIL.
23 and 25 Alexander St. West, Winnipeg

DAWSON, BOLE & CO.,
Wholesale Druggists, Etc.
REGINA, N.W.T.
 Large stock of leading Patent Medicines
 Sole wholesale agents for the Cow Boy Cigar. We also carry all line of popular domestic & imported brands.
WRITE FOR QUOTATIONS.

Hodgson, Sumner & Co.
 IMPORTERS OF
 British, French, American and German
DRY GOODS,
FANCY GOODS,
Smallwares,
TOYS, BEADS, &c
WHOLESALE ONLY.

Cor. Bannatyne & Princess Sts., Winnipeg.
RICHARD & CO,
 Importers and Wholesale Dealers in
Wines, Spirits and Cigars
365 MAIN STREET,
WINNIPEG.

TO ROLLER MILLS. For Bags—Jute and Cotton (all sizes)
Sewing Twine, Jute or Flax.
Stencil Inks, Fast Colors (all shades)
Write to **HENDERSON & BULL**
41 BANNATYNE STREET EAST, WINNIPEG.

For the past six years we have supplied and are supplying all the principal millers in Manitoba and the North west Territories with Sacks, Inks and Twines. Samples mailed and quotations given on application—all goods guaranteed equal to sample.

"Reindeer Brand" Condensed Milk
Contains ALL the cream of the original milk. Full weight and absolute purity guaranteed.
"Reindeer" Brand Condensed Coffee
Combining pure COFFEES, MILK and SUGAR. One spoonful added to a cup of boiling water makes a delicious cup of Coffee all ready for use
Truro Condensed Milk and Canning Company (Limited)
TRURO, NOVA SCOTIA.
Sole agents for Manitoba and the Northwest, **HENDERSON & BULL, WINNIPEG**

AMES, HOLDEN & CO., MONTREAL.

The Ames, Holden Company,
WHOLESALE
Dealers in
BOOTS & SHOES,
33 Queen Street,
WINNIPEG
JAMES REDMOND, WINNIPEG. A. C. FLUMERFELT, WINNIPEG.

Thompson,
Codville & Co.,
WHOLESALE GROCERS,
26 McDermott Street,
WINNIPEG.

AS. PORTER W. M. RONALD.
PORTER & RONALD,
DIRECT IMPORTERS OF
GROCKERY
GLASSWARE
CHINA
LAMPS,
CHANDELIERS,
OUTLERY,
SILVER-PLATED WARE & FANCY GOODS
330 MAIN ST., WINNIPEG

TASSE, WOOD & CO

Manufacturers of

Fine Cigars,
MONTREAL.
Our Brands: { **RELIANCE & TERRIER.**
MIKADO

Are unsurpassed by any in the Dominion
Ask your Wholesale Merchant
FOR THEM.

E. F. Hutchings,

MANUFACTURER AND DEALER IN

SADDLERY, HARNESS,
SADDLERY HARDWARE,
Leather & Findings, Trunks, Valises, &c.
EVERYTHING IN THE SADDLERY LINE.

I have the largest assortment of goods now ready for SPRING TRADE there are West of Chicago. Mexican, Californian and Cheyenne Saddles of my own manufacture on improved principles. Also a large line of English Saddlery at English Invoice Prices.

437 MAIN STREET,

ESTABLISHED 1867 WINNIPEG.

H. S. WESBROOK

Wholesale Dealer in

FARM MACHINERY,

AGRICULTURAL IMPLEMENTS

AND
SETTLERS' COMPLETE OUTFITS.
Wagons, Plows & Harrows, Hay Presses,
Binding Twine, Fence Wire.
Carriages, Phaetons, Buggies, Buckboards
Carts, Democarts, Farm sleighs,
Pleasure Sleighs, Family Sleighs, Cutters.
Sole Agent J. I. CASE THRESHING MACHINE Co
Commissions executed. Correspondence solicited.
Catalogues sent free. Local Agents wanted.
ADDRESS H. S. WESBROOK,
66 Princess St., Market Square, Winnipeg, Man.

H. A. Nelson & Sons

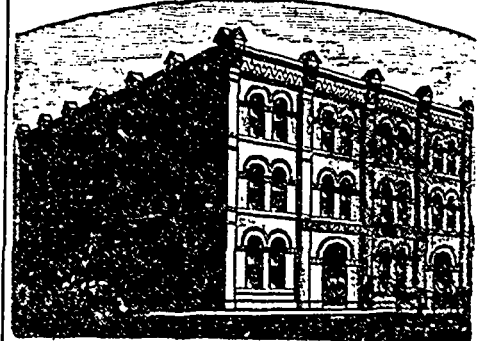
TORONTO —AND— MONTREAL

(HEADQUARTERS FOR

EXPRESS WAGONS, VELOCIPEDES
Hammocks, Cricket, Lacrosse,
Lawn Tennis, and Baseball Supplies
CROQUET, FISHING TACKLE,
etc., etc.

Send for Price List.

Represented in Manitoba and N W T by
W. S. CRONE.



LYON, MACKENZIE & POWIS,
WHOLESALE GROCERS,

Cor. McDermot & Albert Sts., WINNIPEG

GEO. D. WOOD, Winnipeg; WOOD & LEGGAT, Hamilton, Ont

GEO. D. WOOD & CO.

WHOLESALE

Hardware AND Metals

GUNS AND SPORTING GOODS.

22 & 24 ALEXANDER ST. EAST, AND 35 & 37 McWILLIAM ST. EAST.

WINNIPEG.

Glasgow Lead and Color Works,
MONTREAL.

THE "ELEPHANT" BRAND
OF WHITE LEAD

Which takes the lead in Scotland, England and Canada, is manufactured under the control of the original proprietors.

"ELEPHANT"

Ready Mixed Paints made up in all the choicest tints. Every package is warranted to please, every shade matched. Order early.

ELEPHANT Durable Floor and Roofing Paints—dry hard and quick.
ELEPHANT Colored Paints in Irons, Reds and Blues
ELEPHANT Japan Colors in all the newest and best colors.
ELEPHANT Varnishes and Japans superior to import
ELEPHANT On the packages is the only guarantee of really good paint.

The newest, most central and best equipped Paint Works in Canada
Fergusson, Alexander and Co., Montreal.
Agents for Manitoba and Northwest,
Merrick, Anderson & Co., Winnipeg

The Commercial

A Journal of Commerce, Industry, and Finance specially devoted to the interests of Western Canada, including that portion of Ontario west of Lake Superior, the Provinces of Manitoba and British Columbia and the Territories.

Sixth Year of Publication.

ISSUED EVERY MONDAY

SUBSCRIPTION, \$2.00 PER ANNUM.

ADVERTISING RATES.

1 month weekly insertion.....	\$0 30 per line.
3 months, do	0 75 "
6 " do	1 25 "
12 " do	2 00 "

Transient advertisements, 10 cents per line each insertion.

Fine Book and Job Printing Departments.

Office, 4 and 6 James St. East

JAMES E. STEEN,
Publisher

The Commercial certainly enjoys a very much larger circulation among the business community of the country between Lake Superior and the Pacific Coast, than any other paper in Canada, daily or weekly. By a thorough system of personal solicitation, carried out annually, this journal has been placed upon the desk of the great majority of business men in the vast district designated above. The Commercial also reaches the leading wholesale, commission, and manufacturing houses of Eastern Canada.

WINNIPEG, MAY 7, 1888.

W. P. DUNCALFE will open a drug store at Morden.

SAM. TEESE has leased the livery stable of J. Doolittle at Qu'Appelle.

JOS. DOOLITTLE is erecting a new implement warehouse at Qu'Appelle.

J. RITCHIE & Co. have opened a stock of furniture at Neepawa, Man.

R. JOHNSTON has succeeded to the implement business of S. R. Edwards, of Qu'Appelle.

S. T. HANDSCOMB, of Winnipeg, has opened an office as customs broker and commission agent.

J. A. TEES, late wholesale grocer at Winnipeg, of the defunct firm of J. A. Tees & Co., has gone to the United States.

THE Calgary council has passed a by-law granting a company a contract to supply the town with natural gas. The gas has not yet been discovered, but a search will be made.

A. C. McEOWN, general merchant, Boissevain, Man., has added millinery and dress making to his business. An addition of 20x20 feet has been built to his store to accommodate these departments.

A TORONTO telegram on Friday says: This afternoon a long expected crash came, when Hughes Bros., wholesale dry goods, at the corner of Melinda and Yonge streets, suspended. The firm did a rushing business up to last year, when trouble overtook them. The bank of Commerce did its best to help them, but for the last month has had a special examiner at work on the books, as a result of which the firm has suspended. The Bank of Commerce ranks first on the estate for about \$450,000, all

of which is secured except \$140,000. Outside of this the liabilities are over \$100,000.

A. H. CLARK, of Prince Albert, Sask., purposes erecting a building this summer for a drug store.

OATS are selling at 85 cents per bushel at Edmonton, Alberta, and fresh butter is scarce at 40 cents per pound.

BRANDON Mail: So far Capt. Michell of the board of trade has located 125 persons in this county, many of whom are possessed of means, and will purchase as soon as they get in the way of the country. A number of families are stopping in shell tenements in this city erected by themselves until they can locate to their satisfaction.

BRANDON Sun: On Monday morning last the locating engineers of the great Northwest Central commenced the survey of a new line to secure an entrance into the city. The old line carries the road midway between Chater and Brandon, while the new survey will cause a line to be made north of the city, then to follow the slope of the hill skirting the northern limits of the city to the west of Eighteenth street. It will gradually work down into the valley, and cutting off the corner of sec. 27 will cross the river west of the snye and the Eighteenth street bridge. Again turning, it will follow the valley to the neighborhood of the round house, and then into the centre of the city.

The amount of inland revenue collected at Winnipeg during April was as follows:

Tobaccos and cigars.....	\$ 5,718 90
Spirits	7,814 36
Inspection of petroleum.....	82 80
Malt.....	1,150 39

Total.....\$14,796 45

Statement showing the value of goods exported, imported and entered for consumption at Winnipeg, with duty collected during the month of April, 1888, together with a statement for the same period of last year, is as follows:—

Description.	Value 1887.	Value 1888.
Goods exported	\$ 6,938 00	\$ 41,589 00
Goods imported, ...		
dutiable	125,096 00	127,088 00
Goods imported, free	20,734 00	10,543 00
Total imported.	\$145,830 00	\$137,631 00
Goods entered for consumption—		
Dutiable	\$126,931 00	\$131,497 00
Free	20,734 00	10,543 00
Total entered for consumption..	\$147,665 00	\$142,040 00

Duty collected..... \$39,225 04 \$ 42,664 78

SOME objection has been made to the appointment of Capt. Wastie and A. J. McMillan as immigrant agents for Manitoba in Ontario, on the ground that both men come from Brandon, and that on this account they will favor Brandon, in directing immigrants to that district in preference to other parts of the province. This, however does not necessarily follow. The agents are acting for the province as a whole, and not for a limited district, and they will no doubt fully appreciate their position. Still, owing to the rivalry which is going on between different sections of the province for settlers, it would have been good policy on the part of

the Government to have selected the second agent from an eastern, southern or northern district, and thus a shadow of reason for complaint would have been avoided.

A. FERLAND & Co., Calgary, advertise a dissolution sale.

HENDERSON'S C. P. Ry. pocket Gazetteer for May is to hand.

D. COLQUHOUN has opened a general store at Winlaw, Assa., west of Deloraine forty miles.

OPERATIONS are going on at the experimental farm at Indian Head. Fruit and other trees are being planted.

THE stock of the estate of Downs Bros., general merchants, Virden, Man., is offered for sale by tender up to 15th May. The stock amounts to about \$8,000, and book debts \$3,500.

THE liabilities of John Fehr, general dealer, of Dufferin county, Man., who has assigned in trust to J. McLeod Holiday, amount to \$2,200. The assets, including \$700 in book debts, are placed at \$4,500. Also a 160 acre farm. The estate should pay in full.

GEO. A. CROSTHWATE, general dealer, of Souris, Man., who has made an assignment in trust to F. W. Stobart, shows quite a surplus of assets over liabilities. A receiver will be put in to continue the business in the meantime, with the probability that some satisfactory arrangement may in time be made with the late proprietor.

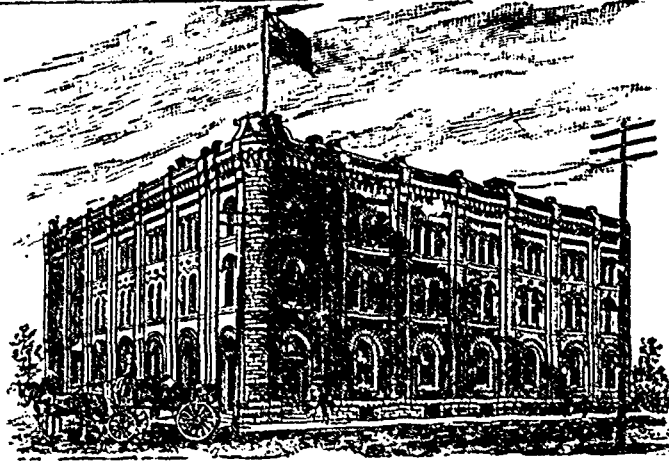
Sir Charles Tupper has given notice of important resolutions in committee on ways and means. The first gives power to the governor-in-council, by proclamation, to abolish export duties on certain kinds of logs mentioned in schedule E to the Customs Duties act, in order that lumbermen in Canada may obtain the full benefit of Mills' tariff bill in the event of its becoming law in the United States.

THE location of the experimental farm at Brandon will give satisfaction to the people of that district. The selection has been made owing to its central location in one of the most populous farming districts of the province, and to the variety of soil found on the farm itself. The disadvantage of the location is, that owing to the fact that all the branch railways of the province diverge toward Winnipeg, considerable delay will be experienced in visiting the farm from points on any of the railways excepting the main line of the C. P. Ry. This drawback will no doubt be overcome in time by the construction of railways north and south from Brandon.

At a public meeting held at Calgary, a committee was appointed to make inquiry regarding a creamery and report at a meeting as early as possible.

Arrangements have almost been completed for starting the Newdale cheese factory. Nearly the required number of cows have already been obtained. Walldock, of Shoal Lake, will be manager.

The Manitou cheese factory commenced the season's operations on Thursday. Only a limited quantity of cheese is being manufactured at present, but that amount will soon be rapidly increased.

GOODS SOLD TO THE
TRADE ONLY.GOODS SOLD TO THE
TRADE ONLY.

G. F. & J. GALT,

DIRECT IMPORTERS

TEAS, SUGARS, WINES, LIQUORS and GENERAL GROCERIES

CORNER PRINCESS AND BANNATYNE STREETS, WINNIPEG, MANITOBA.

WATER communication invariably plays an important part in the early days of settlement of any new country, wherever such communication of even an indifferent nature can be had. The waterways of these western prairies have been of great service in times past, and in the northern portions of the country yet afford the only means of communication other than with wheels. Not many years ago the Red and the Assiniboine rivers were the only highways of commerce, save the serpentine trails made by the Metise with their Red River carts, in what is now the prosperous and rapidly developing Province of Manitoba. Though these water ways have now largely fallen into disuse since the advent of railways, yet with the carrying out of a system of improvements they could then be rendered very valuable to the country. The great waterway of the Saskatchewan system is still the only highway (other than prairie trails) of a vast region of country stretching a thousand miles to the northwest of Manitoba. Along this great natural highway of northern commerce, thriving settlements have grown up. But for the existence of this waterway, the settlements of the Saskatchewan would not now be in existence. Beyond the Saskatchewan, with its almost thousands of miles of navigation, is another and far greater system of inland navigation. This is the great Mackenzie River system, which is just beginning to be utilized, and which affords a commercial highway for that vast northern region, estimated at something like 4,000 miles of navigable waters. Through the enterprise of the Hudson's Bay Company, steamers are now navigating portions of these waters. Bishop Clut says of the Mackenzie:—"It is the finest river in the world for length, depth and navigation in summer. It is a good deal larger than the St. Lawrence in depth and volume of water." The Mackenzie, with its tributaries, the Athabasca, Peace, Slave, Liard and other rivers, with several large lakes in their course, undoubtedly forms a system of inland navigation in northern Canada whose vastness is almost beyond comprehension. In British Columbia the construction of the C. P. R. promises to have the effect of assisting in the development of inland navigation, The

mountain fastness of the interior of this large province is broken by many fine stretches of navigable waters. Some of these waters have not heretofore been utilized to any extent, from the fact that, so to speak, they commenced and ended nowhere, so far as settlement was concerned. Now, however, the great solitude has been broken by the construction of the railway, which, at several points touches some of these navigable water stretches, and they will henceforth be brought into use as connecting links between the railway and the districts north and south of the road. At Golden, 140 miles west of Calgary, where the C. P. R. first enters the Columbia valley, there is a fine stretch of water, which is now being utilized for steam navigation. A trip up the Columbia from Golden will afford a continuous scene of wonders to the tourist. Spreading along between two great snow-capped ranges of mountains, and with its grand scenery, the Columbia valley forms a most romantic region. Across the Selkirk range of mountains the railway touches another fine stretch of navigable water on the Columbia River, and westward again are reached the Shuswap lakes and the Thompson and Fraser Rivers, all of which are made serviceable to some extent as highways of commerce, and which are destined to play an important part in the development of the interior of British Columbia.

The immense value of the Canadian fisheries may be imagined from the statement that Nova Scotia's fish harvest in 1887 was eight and a half millions of dollars, of which the cod contributed no less than four and a half millions. This is considerably more valuable than the wheat crop of Manitoba. With Newfoundland added to the Dominion, as it is likely to be in time, the total wealth derived annually from the fisheries of this country would be something enormous. Then there is the vast fishery wealth of British Columbia and Hudson's Bay, which have not yet been developed to any great extent. It is therefore of the utmost importance that the fishery rights of the country should be fully maintained and protected.

JAMES PYE,

FLOUR MILL BUILDER

CONSULTING ENGINEER, &c.

218 Third Avenue South,
MINNEAPOLIS, - MINN

A Manitoba Testimonial.

PORTAGE LA PRAIRIE, Dec. 8th, 1887.

JAMES PYE, Esq., Minneapolis, Minn., U.S.A.

DEAR SIR.—In handing you our check for \$1,301 24, in full for balance on your contract for building and enlarging our mill, we without solicitation wish to state, that you have done your work in a manner highly satisfactory to this company. The capacity which you guaranteed at 275 barrels, we find considerably under the mark, as we are at present making over 300 barrels, and the quantity of the flour is all that we could wish for. Some of our largest purchasers frankly tell us, it is equal to any flour made in either Minnesota or this province. The yield also we find very satisfactory. We must also bear testimony to your pleasing and gentlemanly manner, and your willingness at all times to meet our wishes. This has made our business relations pleasant and we can honestly say, that we recommend you to any person, requiring anything in the mill building or mill furnishing line. Wishing you the success that straight dealing merits, we are

Yours very truly,

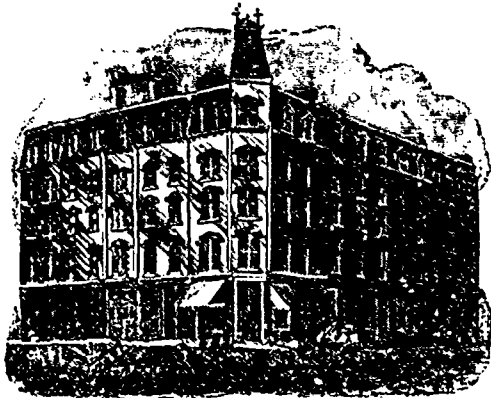
THE PORTAGE MILLING CO
Jas. MacLenaghan, Managing Director.

The British Columbia papers lately expressed great dissatisfaction with some Norwegian colonists who lately located in that province, with a view to engaging in fishing. They took up a location at Plumper's Pass, but although it is said fish were plentiful, yet they became dissatisfied and returned to the immigrant shed at Westminster, for the reason, as alleged by a local paper, that the "rent is low and an occasional day's work suffices to keep them in food." In addition to being lazy they are charged with being quarrelsome, vicious and a nuisance generally. Altogether, British Columbians do not seem to be pleased with the Norwegians as settlers. The sample they have been favored with, cannot justly represent the average Norwegian. In Manitoba the Scandinavian people are always welcome, and are looked upon as among the most steady, industrious and persevering of our immigrants.

The co-operative style of conducting retail stores does not seem to work well in Toronto. In 1880 the Central Co-Operative of Toronto commenced business, and after an eventful and precarious existence the institution is now being wound up. Notwithstanding that the society was bound under the act of incorporation to transact its business on a cash basis, it has been gradually, but surely running into debt for some years. It is now discovered that the accounts are short about \$6,000. The shareholders, who are mostly poor people, will lose their investments. The society was managed by a committee of twelve. An audit of the accounts has shown that the reports given the shareholders were misleading. Though advantageously located, the store has not been doing a good business for some time, and even shareholders have been in the habit of doing their trading to a considerable extent with private merchants. Though nothing can be said against the principle of co-operation, yet in practice there seems to be a great difficulty in making the co-operative store a success.

LEATHER tanning is an industry which in time should be carried on in the West on a

—THE—
Clarendon Hotel,



WINNIPEG.

Opened April 1st, 1888.

(The proprietors have closed the New Douglass House)

Strangers visiting Winnipeg should see
The Clarendon Hotel.

RATES RANGING FROM

\$1.50 to \$3.50 PER DAY

Free Buss to and from all Trains, and Porters in attendance.

Bennett & Co., Props

large scale. In British Columbia, there are three tanneries in Victoria, and one at New Westminster. These are principally carried on in connection with the manufacture of boots and shoes. In Manitoba a little tanning has been done on a small scale, but in the Territories nothing has yet been attempted towards developing this industry. In the western portion of the Territories the conditions are most favorable for the establishment and growth of this industry. There is first an already considerable and rapidly increasing supply of hides and sheep skins, whilst the neighboring mountains afford an abundant supply of hemlock bark. Water powers abound everywhere in the mountains, and could be utilized in grinding the bark. A tannery at a point on the main line of the C. P. R., say Calgary, for instance, would be well located for obtaining the bark at a minimum cost. One advantage in connection with tanning in the West would be the superior quality of the hides, which are freer from grubs and other defects than hides from cattle raised in southern climates. The

GREENE AND SONS COMPANY

WHOLESALE

Furs Hats, Robes,

Gloves, Moccasins
etc.

MANITOBA FALL TRADE, 1888.



Special **MEN'S FURNISHINGS.**

attention is called to our new

Patented Fur Collar and Cap

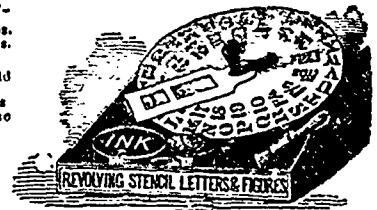
for Ladies.

MONTREAL

MONTREAL STENCIL & RUBBER STAMP WORKS

S. A. FERNEYHOUGH & CO.

Stencil Mill and Bag Brands of every description. Steel Stamps, Soap Stamps, Burning Brands, etc., etc. Ribbon Stamps, Wax, Notary, and Corporation Seals. etc. etc. RUBBER HAND STAMPS OF EVERY DESCRIPTION. Nickel Dating and Self-Inking stamps. Pocket and Pencil Stamps. Solid Rubber Type, etc., etc. Tabbox Patent Alphabet and Figures. We employ experts and first-class workmen, and, manufacturing on our own premises, we are careful and constant superintendents, thus being able to guarantee the BEST WORK and CONSTANT SATISFACTION. Sole Agents for the Dominion for Recse's "New" Patent Adjustable Letters and Figures. 219 MCGILL STREET, MONTREAL.



JOHN OSBORN, SON AND CO.,

MONTREAL,

SOLE AGENTS IN CANADA FOR

BISQUIT, DUBOUCHE AND Co., COGNAC.

"PIPER-HEIDSIECK," SEC CHAMPAGNE.

SCHRODER AND SCHYLER AND Co., BORDEAUX.

OSBORN AND Co., OPORTO.

M. GAZTELU E YRIANTE, PORT ST. MARY.

WINNIPEG REPRESENTATIVE:

JOHN B. MATHER, McDermott Street.

SIR ROBERT BURNETT AND Co., LONDON.

KIRKER, GREER AND Co., (Ld), BELFAST-GLASGOW

"GLENROSA" PURE HIGHLAND SCOTCH WHISKEY.

CAREY, HERMANOS AND Co., TARRAGONA.

C. MACHEN AND HUDSON, LIVERPOOL, Bottlers of "Beaver" brand Bass's Ale and Guinness's Stout

quantity of leather used in the ranching country of the West is very large, in proportion to population, leather leggings and other articles in leather being largely used.

A NEW YORK COMMERCIAL exchange says: "Little by little 'time' is being shortened and the retailer wonders why this is thus. The jobber is making a discount inducement for prompt cash. The trade, generally, is getting on a firmer and better basis every year. The same sum of money is buying a greater quantity of goods each year. Spot cash is on deck!" If the same could be said of trade in Canada, the outlook would be satisfactory indeed, in comparison with what it really is. In fact almost the opposite has been the case. Credit is certainly far too cheap in this country, and almost ninety-nine out of one hundred commercial disasters can be traced to this fact. The situation has become almost alarming owing to the long credit system. It is not the wholesaler alone who suffers from the cheapness of credit. To retail dealers it is as great a disadvantage. Many a retailer who would have done a successful business if obliged to purchase for cash, or on short time, is induced to overload himself

with liabilities on account of the long credits offered. Then the retailer who buys on long credits, is more liable to dispose of his goods too freely upon credit, often resulting in serious loss. The retailer who finds himself in a cramped position financially, will receive more liberal treatment from his creditors if he can show that his assets are largely in stock and very light in book debts. A large amount in book debts is invariably regarded as the very worst asset a dealer can show. Then the long credit system tends to unduly stimulate competition, resulting in compromises and failures, which are a great injury to the retail trader who endeavors to pay 100 cents on the dollar. The dealer who pays in full for his goods can hardly be expected to compete with the man who gets over head in debt and is finally given his stock at 50c in the dollar. All these evils are largely traceable to too cheap credit, and the direct loss to the wholesaler or manufacturer only represents the commencement of the trouble.

Policies of insurance, being in the words of the insurers, are to be construed against them in case of doubt.

The Commercial

WINNIPEG, MAY 7, 1888.

PORK PACKING.

The thirty-ninth annual report of the Cincinnati *Price Current* of pork packing in the West, has been received. Statistics for other parts of the United States and for Canada are also given, and compared with the returns for previous years. The growth of the pork packing industry in the Western States has been one of the marvels of the century. The rapidly increasing population and large consumption of hog products at home, has given great stimulus to the industry, whilst the facilities which the country afforded for raising hogs cheaply, has rendered an export business in the cured product both possible and profitable. The great corn growing regions of the West afford so to speak a perfect paradise for the hog, and the capabilities of the region in this respect have been largely utilized. In recent years exports of hog products from the United States have greatly fallen off, owing to prohibitory measures adopted by the importing countries, against the American product. For instance, in 1881 France imported 70,002,856 pounds of American hog meats, and but 186,716 pounds in 1887. In the same time German imports fell from 43,000,000 pounds to 3,000,000. Great Britain continues to be the largest importer of these meats, amounting to 577,799,000 pounds in 1881, and 380,345,000 pounds in 1887. British America imported 53,828,000 pounds of hog meats from the United States for the year ending June 30, 1887, an increase of over 16,000,000 over the previous year. British America is next to Great Britain the largest importer from the United States in these meats. Belgium stands third, importing 19,627,000 pounds in 1887. Lard is included in the above figures.

In 1860 the total of meats and lard exported from the United States was 107,000,000 pounds, and in 1863 reached 439,000,000 pounds. Then followed a decline to 98,000,000 in 1886; for five years, 1867 to 1871 inclusive, the annual average was 128,000,000 pounds; in 1872 the exports were largely increased, and exceeded any previous year—the annual average for five years, 1872 to 1876 inclusive, being 568,000,000 pounds. The

next five years marks the largest exports recorded, reaching 1,233,000,000 pounds in 1881, the preceding year being about an equal quantity, and for the five years ending with 1881 the annual average was 1,076,000,000 pounds. This was also the period of lowest average prices. Since 1881 values have averaged decidedly higher, especially the first part of the period, and the exports have been much reduced, declining to 627,000,000 pounds in 1883, and 754,000,000 pounds as the annual average for six years, from 1881 to 1887 inclusive.

The Western reported packing in recent years has been 10,000,000 to 12,000,000 hogs annually. Eastern packing, for which returns have been obtained, has been 2,000,000 to 2,500,000 hogs. The annual number killed by regular packing concerns is approximately 15,000,000 hogs, for the entire country. It is estimated that including the number of hogs killed by farmers and butchers, the total would amount to about 30,000,000 hogs annually, about 40 per cent. of which gets into commercial channels. It will thus be seen that, after making allowance for exports, the people of the United States consume annually about 25,000,000 hogs. Reduced to pounds the consumption of hog products, including lard, is placed at about 60 pounds per capita of the population, 50 pounds of which would be in meats, and the balance in lard. One is almost tempted to exclaim that this is rather hoggish.

The drought of last summer throughout the corn states of the West, had the effect of driving the hogs to market, and animals which were not intended for the market before last winter, were at once disposed of. This caused a short supply last winter and produced a sharp advance in prices. In turn the advanced prices have operated unfavorably upon the distribution of the product, both for home consumption and export. The shortage in the pack will therefore be overcome by the decreased consumption at home and exportation. The winter pack in the West for the season 1887-88 is placed at 5,921,181 hogs, a decrease of 517,828 hogs as compared with the previous year. For the summer season of 1887 some 5,611,526 hogs were packed, a decrease of 32,477 as compared with the previous year. As to the prospective supply of hogs the *Price Current* does not look for any great diminution in the supply as compared with the previous year, for the

coming season. The total number of hogs packed in the districts outside of those included in the figures given of packing in the West, are as follows: Eastern States, for summer and winter 1887-88, 2,258,557 hogs; Pacific coast, for 1887, 225,000 hogs. These figures, as in the case of the West, include only hogs packed in factories, and not those killed by butchers and farmers.

The *Price Current* also gives figures of pork packing in Canada, as follows: Total packing for 1887-88, 216,214 hogs, against 256,485 hogs for the year 1886-87. The last year named is the largest on record for packing in Canada. The falling off for 1887-88 is attributed to the high price of hogs in the United States, whence a portion of the supplies for packing are drawn. Last winter only 4,900 hogs were imported into Canada from the United States, against 24,000 for the same time a year ago. For Manitoba, Winnipeg is credited with having packed 4,125 hogs, against 6,700 for the previous year. Montreal packed 28,000, against 20,000 for the previous year. The balance were packed in Ontario, Toronto packing 36,264, Hamilton 20,000, Ingersoll 9,300, Aylmer 7,000, and other points from 400 to 5,000.

SETTING A PRECEDENT.

An important bill has been introduced into the Manitoba Legislature, which if passed will establish a precedent in dealing with municipal corporations which have got into financial difficulties. That the bill will be passed it is almost certain. At the time of writing it has received its second reading, and in the ordinary course of events will doubtless become law, especially as the Attorney-General has taken the measure in charge. This measure has grown out of the unfortunate situation in which several Manitoba municipal corporations have been placed financially. The causes which led to the municipal difficulties are well known. Excessive obligations were contracted during the period of inflation, about the years 1880-82. The country was developing and expanding at an abnormal rate, and the future looked so hopeful that little thought was taken of keeping down expenditure. The greatest difficulty with corporations as well as with individuals (as many merchants have experienced to their sorrow), is to economise during periods of prosperity. There is great danger of running excessively into debt

during such times, on the expectation that the stream of prosperity is to flow on without interruption ad infinitum. Several municipal corporations in Manitoba did not avoid this danger, but on the contrary went straight into it.

During the "boom" period almost worthless real property was valued at high figures, and tax rates were calculated upon an inflated and rapidly increasing assessment. Consequently debts were contracted, which, though apparently not excessive when based on the inflated assessment, became prodigious when the assessment had shrunk to normal figures. Thus the shrinkage in the assessment of a town from two or three million dollars to figures within the hundreds of thousands, as was actually the case, put quite a different appearance upon the financial situation of the place. In order to pay obligations, the tax rate had to be increased in proportion as the assessment figures decreased. Of course this was not always practical. Beyond a certain rate the people would not pay their taxes, and to attempt to enforce anything differently would only be to defeat the object sought. For instance, if a tax were levied so excessive in its nature that the people could not meet it, the effect would be to still further decrease the value of the property, and on an attempt to seize or sell to meet liabilities the real property of a town would be rendered about absolutely worthless. To attempt to "close out" a town the same as a stock of goods, to meet obligations, would therefore defeat the object sought, and bring greater disaster upon the creditors. This was the position in which several municipal corporations in Manitoba found themselves following the collapse of the "boom." The property owners were unable to pay a tax rate sufficiently high to meet liabilities, and in order to prevent action against the corporation, the councils resigned and left municipal matters in a state of chaos.

The bill which has been introduced into the Legislature applies only to the town of Portage la Prairie, but it is understood that the principle contained therein may be applied to other "diseased" municipalities, under separate acts. The bill is intended to provide first for the re-establishment of municipal government for the town, and secondly for the fixing of the rate of taxation. After the council has been duly elected under the proposed act, it is provided that an assessment for the

municipality shall at once be made, and a rate of 21 mills on the dollar shall be levied on this assessment. During the time the act shall remain in force, the rate shall continue to be 21 mills on the dollar. It is further provided that the taxes so collected shall be applied as follows: Nine mills for educational purposes, five mills for current municipal expenses, and the remaining seven mills on the dollar shall be deposited in a chartered Bank in Manitoba to the credit of the municipal commissioner and shall be distributed by him rateably among the creditors of the municipality. The assessment of the property within the corporation shall be made according to its actual value, and creditors are given the privilege of appealing against any assessment, in order that there may be no under valuation of property. The council and school board will not be allowed, under the act, to contract any indebtedness beyond what the rate provided will be sufficient to meet, together with any cash incidental revenue which the town may receive. An important provision of the bill is the clause which debar the creditors from proceeding against the town for debts or interest beyond the amounts allowed by the act, whilst the act remains in force. It is to be understood, however, that the full claims of the creditors shall remain valid, the creditors being for the time merely debarred from proceeding against the town. In short, the bill provides for the re-establishment of municipal government for Portage la Prairie, whilst at the same time exempting the corporation from any action against it by its creditors. In other words, the bill deprives the creditors for the time being, of their right to proceed against the town to recover money loaned the corporation, together with the interest thereon, beyond a certain sum provided for in the act. The precedent is a dangerous one in principle, and is only excusable on the ground that under the act the creditors will get something, whilst otherwise they would get nothing at all. There has been no assessment in Portage la Prairie since 1885, and the creditors of the town have consequently been receiving neither principal nor interest. Besides, the public matters of the town have been in a deplorable condition, and the school closed, since the resignation of the council. The seven mills provided in the act will pay interest on but a small portion of the debt of the town, which latter amounts to over \$260,000, including arrears of interest.

Practically, the bill will have the effect of improving the value of the claims of the creditors. As matters now stand, the town cannot improve, and as no effort is being made to pay interest upon the debt, the liabilities of the town are steadily increasing. By a reorganization of the municipality, the town will be placed in a position to make some advancement, and this is really the principal hope of the creditors for the future. Portage la Prairie has good natural advantages, and under the proposed act it will, no doubt make steady progress. In this case the sum available for the payment of interest upon its debt, will be larger year by year, until perhaps ultimately the full liabilities of the town will be covered. The most satisfactory feature apparent in dealing with the financially embarrassed corporations of Manitoba is the fact that the repudiation of any portion of the debts of such corporations is not for a moment taken into consideration, either by the corporations or the Legislature. Furthermore, the trouble is all owing to the old "boom" obligations, and there is no danger of corporations now on a solid basis, becoming so involved as to require special acts of relief.

RUSSIAN WHEAT.

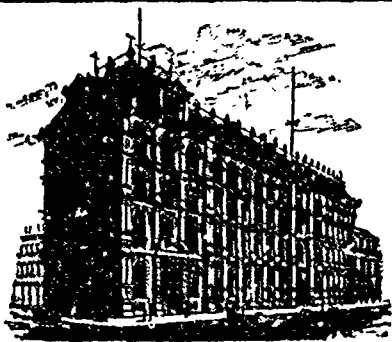
One Johnson, who has gained considerable notoriety as a distributor of alleged Russian wheats throughout Manitoba, writes to a country paper as follows:

"The attack which has been made on them (the wheats) by that belligerent body the Winnipeg board of trade, was done in the interests of a coterie of millers and dealers and not in that of the farmers."

No attack has been made upon these wheats, the Saxonca and Kubanka varieties, by the Winnipeg board of trade. Professor Saunders, of the Government experimental farm, forwarded samples of these wheats to the board of grain examiners at Winnipeg, (not the board of trade), asking an expression of opinion from the board as to the value of the wheats, as compared with red fife and Ladoga wheats. The Ladoga is the Russian wheat which is being introduced by Prof. Saunders. Following is the reply of the board:

"In the opinion of this board of grain examiners, the Manitoba millers and grain dealers would not buy Kubanka wheat at any price, though it might, however, be useful for feed purposes. In the opinion of the examiners the samples viewed are none other than 'goose' or 'rice' wheat, and of little value. The Saxonca variety belongs to the spring or soft class of wheat."

Samples were also submitted to the Toronto board of grain examiners, who declared the Kubanka wheat "similar to the variety known as goose, and of little value." Saxonca was said to be about equal in quality to No. 3 Ontario spring wheat. The opinions were solicited, and no doubt were given honestly by the respective boards. Coming from men who are thoroughly posted in the commercial value of the different wheats, they should carry a great deal of weight.



THOS. MAY & CO

WHOLESALE

Straw, Fancy & Millinery Goods

VICTORIA SQUARE, MONTREAL

Complete set of Samples with
McLEAN BROS., Donaldson Block, Winnipeg.

W. E. SANFORD & CO.

Manufacturers of Clothing.

45 to 49 King St., 24 McDermott St.,

HAMILTON & WINNIPEG.

EUCENE. WATER WHITE. SUNLIGHT

STANDARD OIL COMPANY,
(CLEVELAND, OHIO)

Manitoba & Northwest Department, Winnipeg.

ILLUMINATING OILS LUBRICATING

GASOLINE, AXLE GREASE, CANDLES and all
PRODUCTS OF AMERICAN PETROLEUM.
Our stock here embraces all the Manufactures of the
Standard Oil Company. Correspondence solicited.

W. P. JOHNSON Mgr., Office 343 Main St

CAPITOL ELDORADO CHALLENGE
CYLINDER ENGINE. MACHINERY

M CLARY MANFG CO.

OF LONDON, TORONTO, MONTREAL, WINNIPEG,
AND LONDON, ENG.

Manufacturers of

McCLARY'S "FAMOUS" STOVES,

Stamped and Piced Tinware, Japanned Ware,
Stove Boards, etc., and Dealers in Granite Ironware, and
Tinsmiths' Metals and Supplies.

WHOLESALE

Warerooms: Cor. Rachel St. and Point Douglas Avenue
Show Rooms and Offices,

33 LOMBARD STREET, WINNIPEG.
J. W. DRISCOLL, Manager

KIRKPATRICK & COOKSON
Established 1860,
MONTREAL,
Commission Merchants,
FLOUR, GRAIN, BUTTER, &c.
Consignments and Orders Solicited.

Redwood Brewery

Fine Ales, Extra Porter
and Premium Lager.

Most Extensive Establishment of
the kind in Western Canada.

Edward Drewry,
PROPRIETOR,
WINNIPEG, - MANITOBA.

Highest cash price paid for good
Malting Barley.

Ross, Hilyard & Co

Importers of

DRY GOODS AND
UPHOLSTERS' TRIMMINGS,

No. 3 WELLINGTON ST. WEST
Toronto, Ont.

The Canadian Rubber Co
OF MONTREAL.

Manufacturers of

RUBBER SHOES, FELT BOOTS,
RUBBER PACKING, HOSE, &c.

WORKS: Popineau Square,
WAREHOUSE: 335 St. Paul St. Montreal

Branch: Cor. Front & Yonge Sts., Toronto.

JAS. McCREADY & CO.,
WHOLESALE

Boot and Shoe Manufacturers,
MONTREAL.

SAMPLE ROOMS, 496 MAIN ST. WINNIPEG
W. WILLIAMS, AGENT.

PATERSON, KISSOCK & CO.,

Importers of

MILLINERY and FANCY DRY GOODS,
12 ST. HELEN STREET,
MONTREAL.

John A. Paterson. Wm. Kissock. And. Paterson

MUNROE & CO.,

Wholesale Dealers in

Wines, Liquors and Cigars
OF THE BEST BRANDS
9th STREET, - BRANDON



**S. GREENSHIELDS,
SON AND CO.,**

GENERAL

DRY GOODS,

17, 19 & 21 Victoria Square and 730,
732, 734 and 736 Craig Street, MONTREAL

Complete Set of Samples with
McLean Bros.,

Also with Donaldson's Block, WINNIPEG
Wm. Skeene, Innes Block, Vancouver, B.C

**MACKENZIE & MILLS,
WHOLESALE GROCERS**

Special attention given to

Teas, Coffees, Canned Goods,

DRIED FRUITS, Etc.

CORNER KING AND ALEXANDER STREETS,
WINNIPEG, MAN

Crathern and Caverhill,
WHOLESALE HEAVY HARDWARE
Metals, Window Glass, Paints & Oils, etc.

CAVERHILL, LEARMONT & CO.

Wholesale Shelf Hardware,

WAREHOUSES, SAMPLE ROOMS AND OFFICES:

Caverhill's Buildings, 89 St. Peter Street,
MONTREAL.

Complete Set of Samples with

Merrick. Anderson & Co., Winnipeg

A. RAMSAY & SON

37 to 41 Recollet St., Montreal,

Manufacturers of

Ready Mixed Paints, White and Colored Paints,
Varnishes, etc. Importers of PLATE GLASS and
Belgian Window Glass.

Wholesale Agents for the Dominion for Winsor and New
ton's Artists Materials.

WINNIPEG MONEY MARKET.

The monetary situation has changed very little in the city since our last report, and even the advent of the fourth on Friday last produced no remarkable features. There are no complaints of scarcity of funds at the banks, as resources there are ample, but both traders and bankers are in no way anxious to extend the volume of paper at discount. Payments from the country are far from as good and prompt as they might be, although on the fourth there were no irregularities to speak of, and a smooth surface was maintained, although considerable financial patching was necessary. There seems, however, to be a general hope, not unsupported by symptoms too, that the list of compromises and extensions has about run out, and that a more satisfactory state of affairs is at hand. If this was once reached lower discount rates might be expected, but 3 per cent. is still the minimum rate quoted. In real estate mortgage loans business is slow, although a certain number of farm loans are being made right along. The volume is not heavy, however, and that of interest payments is equally light. The steady rate of interest for such loans is eight per cent.

WINNIPEG WHOLESALE TRADE.

The movement in the wholesale trade was of a steady nature last week, and indicated a fair average distribution for the season in most staple lines. Provisions were in improved demand, and generally firm. Produce receipts are not yet large, but increasing. Textile branches of trade were rather quiet, but with perhaps increasing signs of life. Building material and supplies are growing in demand, and promise to be active in the near future. Fruits were among the most active branches of trade, though the varieties in the market are limited mostly to staple sorts.

AGRICULTURAL IMPLEMENTS.

The seasons' business is now over in spring implements and it has been a very satisfactory one. There has been a large sale of plows, harrows, seeders, etc., probably the largest trade in these articles since 1882. The number of orders already taken for harvesting machinery is large, and the prospects are good for a considerable increase in the sales of binders, though of course crop conditions hereafter will influence the season's sale of binders.

CANNED GOODS.

Prices were as follows: Tomatoes, \$3.25; peas, \$3.50 to \$3.75; beans, \$2.75 to \$3.00; corn, \$3.25 to \$3.40; peaches, (Canadian) \$7.00 to \$8.00; apples, \$3.25 to \$3.50; pears, \$3.25 to \$3.50; plums, \$4.50 to \$5.00; strawberries \$5.25; raspberries, \$4.75 to \$5.25; peaches (California) \$8.50; pears, \$8.00; Plums, \$7.50; apricots, \$8.00.

DRUGS.

Quotations are unchanged and as follows: Howard's quinine, 75 to 90c; German quinine, 65 to 75c; morphia, \$2.50 to \$3.00; iodide of potassium, \$4.25 to \$4.75; bromide of potassium, 65 to 75c; American camphor, 40 to 45c; English camphor, 45 to 50c; glycerine, 30 to 40c; tartaric acid, 70 to 75c; cream of tartar, 35 to 40c; bleaching powder, per keg, \$8 to \$10; bicarb soda, \$4.50

to \$5; sal soda, \$2.50 to \$3.00; chlorate of potash, 25 to 30c; alum, \$4 to \$5.00; copperas, \$3 to \$3.25; sulphur flour, \$4.50 to \$5.00; sulphur, roll, \$4.50 to \$5.25; American blue vitrol, 7½ to 9½c.

FRUITS—GREEN, VEGETABLES, ETC.

Dealers experienced a fairly active business last week, as a result of warmer weather. In apples some russets are in the market, in good condition and held at \$6 to \$7 per barrel. Other varieties of apples are more or less demoralized in quality, and sell from \$2 per barrel upward. Quotations are as follows. Messina oranges, \$6 to \$6.50 a box; California Riversides, seedlings, \$6 to \$6.50; Fancy Riverside Navel, or seedless, \$7 to \$7.50; Choice Los Angeles, \$5.25 to \$5.75; Messina blood oranges, in half boxes, \$4; Messina lemons, \$6 to \$6.50; Pineapples, \$6 to \$7 per dozen.

FRUITS—DRIED, AND NUTS.

Valencia raisins are easier. Quotations are now as follows: Dates, 10c per lb.; in 50-lb. boxes; Valencia raisins, \$2.30 to \$2.50 per box; Morand's Valencias, \$2.40 to 2.50 per box; Malagas, London layers, \$3.50; Elmo figs, in different sized boxes, 15 to 18c per lb.; Walnuts, 18c per lb.; peanauts, raw, 15c; roasted, 17c; almonds, 20c; pecans, 17c; Filberts, 15c; Brazils, 17c per lb.

FURS.

In the following range of prices it will be understood that only a No. 1 prime skin will bring the highest figure, and that the bottom prices are for the lowest grade of unprime skins. There are usually about six grades from the lowest to the best qualities. This will account for the wide range of quotations, as follows:—Beaver, \$1 to \$6 per skin; badger, 25c to \$1.50; black bear, \$2 to \$16; cubs do, 50c to \$4.00; brown bear or cinnamon, \$1 to \$15; cubs do, 50c to \$3; grizzly bear, \$3 to \$35; cubs do, \$1 to \$12; white bear, \$3 to \$50; cubs do, \$2 to \$15; lynx, 25c to \$3.00; cubs do, 5c to 40c; wild cat, 25 to 75c; timber wolf, 25c to \$3; large prairie do, 25c to \$1.30; small prairie do or coyote, 25c to \$1; wolverine, 50c to \$4; panther 10c to \$2.50; fisher, 50c to \$6; red fox, 25c to \$1.50; kit fox, 25c to 60c; silver, grey, or black fox, \$4 to \$50 according to color and quality, cross fox, 50c to \$5; blue fox, 50c. to \$4.50; white fox, 25c to \$1.50; martin, 25c to \$1.25, mink, 15 to 60c, muskrat, midwinter, 6 to 10c, fall, 3 to 5c, spring, 3 to 12c, culls and kits, 1 to 2c, otter, \$1 to \$8, do cubs, 25 to 75, raccoon, 25 to 80c, skunk, 15 to 50c. Skins may be so badly damaged or out of season that even the lowest price stated can not be obtained.

FISH.

Lake Winnipeg white are quoted at 5 to 6c; pickel at 2½ to 3c; Lake Superior trout, 8 to 9c. These are all frozen, no fresh caught yet being in the market. Fresh B.C. salmon held at 14 to 15c.

GROCERIES.

Prices remain very steady. Rio coffees only being reported easier. Prices are. Sugars, dark yellow, 7 to 7½c; bright yellow, 7½ to 7¾c; granulated, 8½ to 8¾c; lumps, 9½ to 9¾c. Coffees—Rios, from 18 to 22c; Java, 25 to 30c; Old Government 33 to 34c; Mochas, 32 to 35c. Teas, Japan 23 to 46c; Congous, 22 to 60c;

Indian teas, 35 to 60c; young hyson, 26 to 50c. Syrups, corn, \$2.40 to \$2.60; sugar cane, \$2.50 to \$2.75; T. and B. tobacco, 56c per pound; P. of W., butts 47c; P. of W. caddies, 48c; Honeysuckle, 7s, 55c; Brier, 7s, 53c; Laurel Bright Navy, 3s, 56c; Index d. thick Solacos, 6s, 48c, Brunette Solaco, 12s, 48c. MacPine chewing tobacco. Beaver, 8c, 63c; Jubilee, 3s, 59c, Anchor, 58c; Smoking, Virginia Leaf, 3s, 56c, do Leaf, 7s, 56c; Silver Shield, 7s, 53c; Cut Cavendish, 8s, 70c; Silver Ash, 8s, 61c. tin boxes, 64c, Club Mixture, 8s, 65c. Special brands of cigars are quoted: Reliance, \$50; Gen. Arthur, \$50; Mikado, \$40; Terrier, \$30 per 1000.

HIDES.

Quotations are unchanged and as follows: Winnipeg inspection, No. 1, 4c; No. 2, 3c; bulls, 2c; calf, fine haired real to 11 pound skins, No. 1, 6c; No. 2, 4c; sheep pelts, 25 to 50c. Tallow, rendered, 4c per lb; rough, 1½c per pound.

HARDWARE AND METALS.

Prices remain steady at prices as follows: Cut rails, 10d and larger \$3.75; I. C. tin plates, \$6 to \$8 25; I. C. tin plates, double, \$12.00 to \$12.50; Canada plates, \$4.00 to \$4.25; sheet iron, \$3.75 to \$5.50, according to grade; iron pipe, 35 to 40 per cent off list prices; ingot tin, 40 to 42c per lb., according to quality; bar iron, \$3.00 to \$3.50 per 100 lbs.; shot, 6½ to 7; per lb.; tarred felt, \$2.75 to \$2.95 per 100 lbs. barbed wire, 6½ to 7c

LEATHER AND FINDINGS.

Prices are steady as follows: Spanish sole 27 to 31c; slaughter sole, 30 to 32c; French calf, first choice \$1.25 to \$1.50; Canadian calf, 75c to \$1.00; French kip, \$1 to \$1.10; B Z kip, 85 to 90c; Bourdon kip, 70c; slaughter kip, 55 to 65c; No 1, wax upper, 45 to 50c; grain upper, 50c; harness leather, 29 to 32c for plump stock. American oak sole, 45 to 60c; buffe, 17 to 22c a foot; cordovan, 17 to 21c; pebble, 21 to 23c; colored linings, 12c.

PAINTS, OILS AND COLORS.

Prices now quoted: Turpentine, 80c in five-gallon cans, or 75c in barrels; harness oil \$1.00; neatsfoot oil, \$1.25; linseed oil, raw, 70c per gallon; boiled, 73c in barrels or 5c advance in five-gallon lots; seal oil, steam refined, \$1; castor, 12½c per lb.; lard, No. 1, \$1.25 per gal. olive oil, pure, \$1.50; union salad, \$1.25; machine oils, black 25 to 40c; oleine, 40c; fine qualities, 50 to 75c. Coal oils, silver star, 26c; water white, 29c. American oils, Eocene, 34c; water white, 31c; sunlight, 28c. Calcined plaster, \$4.25 per barrel; Portland cement, \$5 to \$5.50; white lead, genuine, \$7.00; No. 1 \$6.50; No. 2 \$8.00; window glass, first break, \$2.25. Alabastine, \$8 per case of 20 pkgs.

WINES AND SPIRITS.

Prices are: Canadian rye whiskey, five year old, \$2.40; seven year old, \$3; old rye, \$1.75; Jules Robin brandy, \$4.50; Bisquet Debouche & Co., 4.50; Martell, vintage 1885, \$6.50, vintage, 1880, \$7.50; Hennessy, \$6.50 to \$7.50 for vintage 1885 to 1880; DeKuyper gin, \$3.50; Port wine, \$2.50 and upwards; Sherry \$2.50 and upwards; Jamaica rum, \$4.00 to \$4.50; DeKuyper red gin, \$11.50 per case; DeKuyper green gin, \$8.50 per case; Tom Gin, \$9.00 to \$10.00; Martell and Hennessy's brandy, one star, \$14 per case of 12 bottles; v. o., \$19; v. s. o. p., \$22.

THE MARKETS. •

WINNIPEG.

WHEAT.

Seeding has been going on rapidly during the past week, under favorable conditions. The weather has been very favorable for seeding, though not for growth. In some districts farmers are well up with wheat seeding, and later reports indicate that there will be no shortage in the area sown to wheat, as compared with last year, with a prospect of a slight increase. It is gratifying to learn that notwithstanding the late season, there will be no falling off in the acreage. In coarse grains there will be a considerable increase in the area sown. A good deal of land which would have been sown to wheat had the season been earlier, will now be devoted to oats and barley, and thus an intended large increase in the wheat area will be prevented for this year. The prospect of a good demand for Manitoba barley in the future, will draw more attention to that crop. It is also pleasing to learn that farmers are this year giving greater attention to the selection of good clean grain for seed, in oats and barley. Trading in wheat has been light, and confined to sales afloat at Port Arthur for May and June delivery. Prices have maintained a strong tone. No. 1 northern afloat at Port Arthur, has sold as high as 82½c, which was the top price paid. This would be equal to 68 to 69c for No. 1 hard, and 66 to 67c for No. 2 hard and 1 No. 1 northern on track here.

FLOUR.

Flour has been advanced about 15c in this market, for local price. Quotations to the local trade, in broken lots now are:—Patents, \$2.20; strong bakers, \$2.00; XXXX, \$1.45; superfine, \$1.25.

MILLSTUFFS.

Brand is now quoted at \$10 per ton and shorts \$12 per ton.

OATS.

Oats maintain a firm tone and show some advance in price. There was a good demand for good clean oats for seed. Ordinary quality were held at about 32c on track here.

OATMEAL.

Local prices are unchanged, as follows: Standard, \$2.45; granulated, \$2.60; rolled oats, \$3.90.

EGGS.

Though receipts were not large, yet prices were again lower last week, and ranged from 11 to 12c in case lots. The drop in prices seems to have reduced deliveries.

BUTTER.

The butter situation remains unchanged. From 17 to 18c is about the usual range for fresh rolls, and 15 to 17c for good old, with the demand light.

LARD.

Best Chicago lard was firm at \$2.20 per 20 pound pail, with native held at \$2.25 to \$2.30. Inferior qualities of imported lard may be obtained from \$2.00 upward.

CURED MEATS.

Prices were generally strong at quotations, with a tendency to higher figures for Chicago. Prices were:—Home cured quoted as follows:—Long clear bacon, 11 to 11½c; breakfast bacon, 14 to 14½c; rolls, 13c; hams, 14½ to 15c; pork sausage, 10c per pound. Chicago hams 15 to 16c, dry salt 11½ to 11¾c.

DRESSED MEATS.

Beef steady at from 6 to 7½c. Pork scarce

and bringing 8½ to 9c for dressed hogs. Stocks of frozen mutton are running low, and there is no fresh yet in the market. Now quoted at 13 to 14c. Veal 8 to 10c.

LIVE STOCK.

Cattle steady at 3½ to 4c. A car lot of ordinary sold at 3½c. Good animals would bring 4c.

VEGETABLES.

There is yet no outside demand for potatoes, and only a few loads were moving on the market. About 35c per bushel was the usual figure paid. Other quotations were:—Onions, \$1.50 to \$1.80 per bushel; cabbage, \$10 per 100 for good; celery, 50c to \$1 per dozen bunches, as to quality; carrots 50 to 60c per bushel; turnips, 25c per bushel.

C. W. WILLIAMS, general dealer, Killarney, Man., has assigned in trust.

F. S. MOYLE, general dealer, Killarney, Man., has assigned in trust to S. A. D. Bertrand.

W. R. CLARKE, general dealer, Stonewall, Man., who assigned in trust to C. M. Rubidge, has liabilities of \$1,800, and the stock amounts to \$1,200. An offer equal to about 25 per cent. of the liabilities has been accepted by the creditors.

The customs authorities at Montreal have made a large seizure of valuable Chinese goods on a charge of undervaluation of 50 per cent. The goods were consigned to the King Tye Ching Co., which were about to open a store here. The consignment is valued at over \$75,000, and consists of fancy articles, silk handkerchiefs, mats, screens and silk quilts. The company is also in business at Victoria.

AN Ottawa telegram of Saturday says: W. D. Perley interviewed Hon. Mr. Costigan this morning relative to the proposed new grading of Manitoba and Northwest wheat. After a lengthy conversation the Minister decided to ask the boards of trade of Winnipeg, Toronto, Montreal and Port Arthur to send delegates to Ottawa on the 15th inst., to discuss the whole matter with him, to which meeting the Manitoba and Northwest members will be invited, and it is expected that a satisfactory basis of classification will be arrived at.

THE stock of the estate of Peddie & Co., (J. W. Peddie), of Winnipeg, amounting to about \$16,900, was sold by the sheriff at auction for 41 cents on the dollar. F. Peddie & Co's stock sold in the same way, brought 33½ cents on the dollar. The stock, including about \$1,700 of shop fittings, etc., amounted to about \$19,300, showing a deficit as compared with liabilities of about \$1,350. Geo. H. Rogers & Co were the purchasers of both stocks. The full liabilities of F. Peddie & Co. were \$20,680, and assets \$19,312. The liabilities of J. W. Peddie were \$17,439, including preferential claims amounting to \$5,394. The full assets were \$22,900, including \$6,000 in bills receivable. This would show an apparent surplus of something less than \$5,500, but a considerable portion of the \$6,000 asset will not be met in full, and when the preferential claims are covered, the amount to be divided among the unsecured creditors will not be large.

Special Trade Notices.

LET there be no mistake about this, that the Myrtle Navy tobacco is manufactured from the very finest Virginia leaf. No higher quality of

leaf can be purchased for any tobacco made. It is selected with the very greatest care, and treated with the most approved processes for preserving the flavor of the tobacco.

THERE is perhaps no article of commerce, in connection with which more trash is foisted upon the public, than soap. It is therefore with pleasure, that we testify to the excellence of a new glycerine and borax soap recently placed upon the market by the Pure Gold Manufacturing Co., of Toronto. From samples tested, we discover none of the injurious effects upon the hands, so common with laundry soap, and for cleansing powers it has few equals among the manufactures of Canada. In short it is a laundry soap that can be confidently recommended.

MESSRS. MERRICK, ANDERSON & Co. of this city, who have recently been appointed North western agents for the J. A. Converse Rope, Twine and Jute Factory of Montreal, have completed their arrangements for the handling of these goods to suit the wants of the Northwest. Besides taking orders for shipment direct from the factory, they will carry a full stock of jute and cotton sacks, manilla and other cordage and twines, and be ready to supply immediate wants of traders from the same. In their large new premises, (formerly the wholesale grocery house of Messrs. G. F. & J. Galt) they will have ample facilities for extending business, and taking a place among the leading wholesale mercantile houses of the Northwest.

Lumber Cuttings.

Lzany & Kyle, lumber men and mill owners of Vancouver, B. C., have formed a partnership with George Cassady, of Chatham N. B. under the name of George Cassady & Co., and will shortly commence the manufacture of doors, sashes, etc. at Vancouver. The erection of a large factory has been commenced. The main building will be two storeys in height, and will be 50 by 75 feet. In addition to this there will be a large drying room, a boiler house, and all the requisite outbuildings. The machinery, now in the city, is of the latest approved make. A shingle mill will also be run in connection with the factory.

A movement has been set on foot in Chicago for the organization of a mutual insurance company, having for its object lumber yard insurance. In calling attention to the step, the *Lumber Trade Journal* recites that during a period of ten years the trade in Chicago has paid in premiums for fire insurance about \$3,000,000, and that the loss in the same time, including yards, planing mills and box factories, had been inside of 5,000,000, rates in the mean time having been advanced from 60 and 75 cents to \$2 and \$2.10. The *Journal* argues that while the lumber interest have claimed losses of not at the greatest over 25 per cent. of the premiums paid, the dry goods, clothing, wholesale shoe and other industries in that city have been able to secure all the insurance they want at three-fourths and one and one half per cent., while the losses to the companies have been nearly if not equal to the premiums paid.

P. F. Gannon, wholesale and retail grocer, Montreal—demand of assignment made on them

FISH, HYMAN & CO.,

Importers of

FINE HAVANNA CIGARS

212 ST. JAMES ST., MONTREAL

The Fensom
Elevator
Works.

Manufacturers of Hydraulic,
Steam and Hand Power Passen-
ger and Goods Elevators,

34, 36 and 38 Duke Street
TORONTO.

J. H. ASHDOWN,

Wholesale Dealer & Importer of all kinds of

Shelf and Heavy Hardware,

STOVES AND TINWARE,
PAINTS, OILS AND GLASS,
RAILROAD and MILL SUPPLIES,

The Trade furnished with our Illustrated
Catalogue on application.

Corner Main and Bannatyne Streets

WINNIPEG.

DICK, BANNING & CO

MANUFACTURERS OF

Lumber, Shingles and Lath,

DOORS AND SASH.

MILLS AT KEEWATIN. OFFICE: OPPOSITE C.P.R.
PASSENGER DEPOT, WINNIPEG.

Toronto Hide & Wool Co

Wholesale Dealers in

HIDES!

SHEEPSKINS & WOOL.

JOHN HALLAM

88 Princess St., WINNIPEG
83 and 65 Front Street East, TORONTO.
PROPRIETOR.

Frank Lightcap, - Traveler.

We will be in the market this season
as usual for all classes of Wool, and
are prepared to pay the highest mar-
ket prices.

E. A. SMALL & CO.,

WHOLESALE,

CLOTHING

NEW FIRM, NEW GOODS.

203 and 210
McGILL STREET, MONTREAL

W. J. TAFFE.

Agent for Manitoba and the Northwest,
WINNIPEG.

COCHRANE, CASSILS & CO.

Wholesale Boots and Shoes

Cor. Craig & St. Francis Xavier Sts.,
MONTREAL.

Samples with McLean Bros.,
Donaldson's Block, WINNIPEG.

ROYAL SOAP MFG. CO., [Limited.]

WINNIPEG.

BRANDS. Hardwater, Dominion, Linen, Ivorine
and Electric, also a full line of Toilet Soaps.

Protect HOME Industry!

BOECKH'S

STANDARD

BRUSHES.

Quality and Size Guaranteed.

For Sale by all Leading Houses.

Campbell, Spera & Co.,

WHOLESALE IMPORTERS

MEN'S FURNISHING GOODS,

Smallwares, etc.

MANUFACTURERS OF

Overalls, White and Regatta Dress
Shirts, Flannel, Cotton & Tweed Shirts

Our stock for the coming season is replete with all the
Novelties. The inspection of buyers cordially invited.

CAMPBELL, SPERA & CO.,

27 PORTAGE AVENUE EAST,

WINNIPEG.

JAMES WHITHAM. A. A. AEYR, Special Partner

James Whitham & Co.

Manufacturers of & Wholesale Dealers in

BOOTS & SHOES,

43, 45 and 47 St. MAURICE STREET,
Near McGill Street,
MONTREAL.

Represented by J. M. MACDONALD,
626 MAIN ST., WINNIPEG

JAMES O'BRIEN & CO.,

Manufacturers of Clothing

—AND—

Importers of GENTS' FURNISHINGS,

HATS, CAPS AND FUR GOODS, GLOVES
AND MITTENS.

72 and 74 Princess St., Winnipeg

VICTORIA SQUARE, MONTREAL

OGILVIE MILLING CO.

Mill at Point Douglas.

Capacity - - 750 Barrels per day.

OFFICE:—Corner King and
Alexander Streets, Winnipeg.

A Full Stock of Patent Hungarian, Strong
Bakers' and Spring Extra Flour; Oatmeal, Pot
and Pearl Barley, Graham Flour, Cracked
Wheat, Bran, Shortst, Ground Feed, Otas,
Barley.

Wheat buyers at all C.P.R. Shipping Stations

LIVINGSTON, JOHNSTON & CO.,

WHOLESALE

Manufacturers of Clothing

44 BAY STREET,

TORONTO.

Smith & Keighley,

TEAS,

EAST and WEST INDIA PRODUCE

—AND—

GENERAL GROCERIES.

9 Front St. East,

TORONTO

EASTERN MARKETS.

CHICAGO

May wheat opened at 80½c on Monday, and ranged from 80½ to 81½c during the day. The decrease in the visible supply for the previous week was only 169,000 bushels. Trading in wheat was large. Corn was strong. Oats opened ½c lower and sold down ½c, but recovered. Closing prices were :

	May.	June.
Wheat	81½	82½
Corn	55½	55
Oats	32½	32½
Pork	13.02½	13.75
Lard	7.92½	7.97½
Short Ribs	7.17½	7.25

May wheat ranged from 80½c to 81½c on Tuesday. The feeling was easier, but prices settled down very slowly. Crop news were more favorable, owing to reported rains. Provisions were firmer owing to small May deliveries, but the advance in prices did not hold. Closing prices were :

	May.	June.
Wheat	80½	82½
Corn	55	54½
Oats	32½	32½
Pork	13.00	13.07½
Lard	7.90	7.92½
Short Ribs	7.20	7.27½

Prices closed stronger for all speculative commodities on Wednesday, as follows :

	May.	June.
Wheat	81½	82½
Corn	55½	55½
Oats	32½	32½
Pork	13.70	13.80
Lard	8.02½	8.05
Short Ribs	7.30	7.35

There was some tone to the wheat market on Thursday, and June sold up to 83½c. Lard was the strongest commodity on the list. Closing prices were :

	May.	June.
Wheat	81½	82½
Corn	55	55½
Oats	32½	32½
Pork	13.70	13.80
Lard	8.12½	8.17½
Short Ribs	7.35	7.40

May wheat opened at 81½c on Friday, and ranged from 81½ to 81¾c. May corn sold as high as 58c. Provisions closed about at the top prices. Closing prices were :

	May.	June.
Wheat	81½	82½
Corn	57½	55½
Oats	33½	32½
Pork	13.95	14.02½
Lard	8.15	8.17½
Short Ribs	7.42½	7.50

Closing prices on Saturday were :

	May.	June.
Wheat	81½	82½
Corn	57½	55½
Oats	33½	32½
Pork	14.15	14.20
Lard	8.15	8.17½

DULUTH WHEAT MARKET.

Closing prices for No. 1 hard on each day of the week were :

	Cash	June.	July.	Aug.
Monday	82	83½	84½	—
Tuesday	82	82½	84	—
Wednesday	82½	83½	84½	—
Thursday	—	83½	84	85
Friday	82½	83½	84½	84½

Closing prices on Saturday were: Cash, 82½; June, 83½; July, 84½; Aug., 84½.

MONTREAL STOCK MARKET.

The following quotations on May 4th, as compared with prices on April 27th will indicate the course of the stock market :

	Apr 27.		May 4	
	Offered.	Bid.	Offered.	Bid.
Montreal	212½	212	214½	214½
Ontario	121	—	123	123
Toronto	207½	203	216	207
Merchants	133½	131	134½	134
Dominion	—	—	—	—
Commerce	119½	119	120½	120
Imperial	—	—	—	—
Molson's	—	—	162	149½
Union	96	91	—	—
N. W. Land Co.	54½	50	54	53
C. P. R.	60	59½	59½	59

CANADIAN SECURITIES IN ENGLAND.

The Canadian Gazette of April 19, gives the following quotations of leading Canadian securities in the London market :

	Price.	Rise.	Fall.
Canada 4 per cents, 1860	113	—	1
Ditto 3½ per cents	107	—	½
Ditto 4 per cents, 1885	113	—	1
British Columbia 4½ per cents	—	—	—
do 5 per cents 1877	—	—	—
Manitoba 5 per cents	—	—	—
Quebec 5 per cents, 1853	117	—	—
Winnipeg 5 per cents	—	—	—
Canadian Pacific shares (N. Y. register) ..	60½	—	—
Ditto shares (London register) ..	59½	—	—
Ditto mortgage bonds	109½	1½	—
Grand Trunk ordinary stock	11½	—	—
Ditto first preference	68½	—	—
Bank of B. C. fully-paid shares	33	2	1½
Ditto £15 paid	—	—	—
Bank of B. N. A.	73	—	—
Manitoba Mortgage	—	—	—
Trust and Loan of Canada, £5 paid ..	—	—	—
Canada North-West Land	2½	—	—
Hudson's Bay	20½	—	—
Vancouver Coal, £9 paid	4	—	—

Wheat at Montreal.

A Montreal report states that within a few days half a million bushels of No. 1 Northern wheat have changed hands at Port Arthur, the prices being 80c to 82c per bushel. At this rate the value of Manitoba wheat is 62c to 64c. The tendency of prices is upward. Dealers' outside estimate the amount of wheat left in farmer's hands is a million. It is believed that the Ontario millers who have carried no stock of wheat will bid against each other for this residue and send prices away up. In the outside markets too the tendency is upward.

The Trade Bulletin says: Manitoba flour has moved up 14c to 15c per bbl., grades that formerly cost \$4 laid down here, being now up to \$4.10 to \$4.15, resales of which in small lots have been made at from \$4.20 to \$4.30. Straight rollers have changed hands at \$4.10 to \$4.15. Sales of spring and winter wheat patents have also transpired at an advance, and more business has been done on American account, sales having been made of both Minneapolis and St. Louis patents for local account. Ontario millers have advanced their prices fully 15c per bbl., and here there has been an average advance of 5c to 10c. Western millers complain that they cannot get sufficient wheat to meet their milling requirements, and that a scarcity of flour must eventually result from the action of the farmers in holding back their wheat. We quote patent, winter, \$4.45 to \$4.60; patent, spring, \$4.45. to \$4.60.

On Friday the wheat market was as follows: Wheat strong, and prices advanced all round. Some round lots of No. 2 hard sold for 95c. No. 1 hard is very scarce, and it is doubtful if

a carload can be bought for less than \$1. Quotations are: No. 1 hard \$1; No. 2 hard, 94 to 95c. All grain space in outgoing vessels taken up.

A British Columbia exchange says: The importation of condensed milk from Truro N. S., of the celebrated Reindeer brand, into this province has assumed large proportions, and is still growing. Where a few years ago a case was imported a car load is now brought in and the Truro brand has virtually driven the American and Swiss articles out of this market.

The full text of the Northwest Territories representation bill has been brought before the House at Ottawa. As previously announced, the new assembly will consist of twenty two elected members, and not more than three legal experts. The duration of the assembly is three years. Manhood suffrage is instituted, and every male British subject by birth or naturalization, other than unfranchised Indians, who has attained the full age of 21 years and resided in the Territories for at least twelve months, being entitled to vote. A deposit of \$100 is required from each candidate at nomination. In connection with the bill Sir John gives notice to-night that the indemnity to be allowed each member attending each session shall be one hundred dollars and to each legal expert two hundred and fifty dollars, together with actual travelling expenses, payable out of the consolidated revenue fund of Canada. The speaker of the legislative assembly is to receive a salary of five hundred dollars per annum and clerk of the assembly two thousand dollars per annum, both to be paid out of the consolidated revenue fund.

Verret, Stewart & Co., wholesale dealers in fish, Montreal, have dissolved.

Ed. Languedoc, general storekeeper, St. Michel, has assigned.

DOLL
W. F.
WHOLESALE JEWELER.

Watches, Diamonds, Clocks, Spectacles, Gold-headed Canes, Silver-plate, Watch Material, Tools, etc., etc.

525 Main St., WINNIPEG.

CAUTION !

EACH PLUG OF THE

Myrtle Navy

IS MARKED

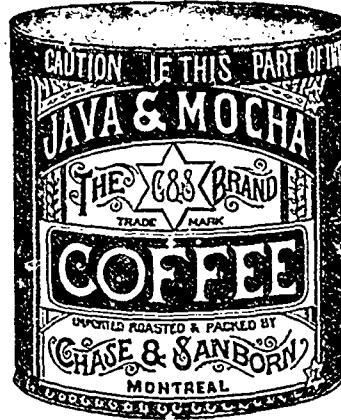
T. & B.

IN BRONZE LETTER.

NONE OTHER IS GENUINE.

THE BEST

A Brand of Coffee which represents a perfect blending of strength and flavor. Always packed in 2 lbs. air tight cans; no charge for cans; 15 cans in a case.



A perfect blend of Private Plantation Java and Pure Arabia Mocha. Imported, Roasted, and packed by
Chase & Sanborn,
MONTREAL.

COFFEE.

TEES, WILSON & CO.

Wholesale Grocers and Tea Merchants,
 66 ST. PETER STREET, MONTREAL.

TEAS A SPECIALTY.

D. C. MCGREGOR,

Agent for Manitoba and Northwest Territories

McIntyre Block, Winnipeg. Man.

First class in every Respect
 Appointments Perfect.
 Graduated Prices.



Every Attention paid to
 Guests.
 MONTREAL.

HILLIARD HOUSE.

RAT PORTAGE.

The Palace Hotel of the Northwest, Ontario. Newly and elegantly furnished throughout. The only Commercial House in the district. First class Sample Room. Terms Reasonable.

LOUIS HILLIARD, PROPRIETOR.

ANGLO - AMERICAN HOTEL !!

GRETNA, - - MAN.

J. D. PIERSON, well known to the commercial trade throughout the west, has lately taken charge of this house and fitted it up with Sample Rooms and every convenience for Commercial Travellers.

WOLSELY HOUSE,

WOLSELEY, - ASSINIBOIA,
 E. A. BAMBURY, PROPRIETOR.

Headquarters for Commercial Men. This house has been recently refitted, with special reference to the convenience and comfort of the commercial trade. Good Sample Rooms. Livery in Connection.

PALMER HOUSE,

REGINA, - ASSINIBOIA,
 THE LEADING COMMERCIAL HOUSE.
 Free Sample Rooms for Travellers. Opposite C.P.R. Station.

CHAS HARLEY, Prop.

QUEEN'S HOTEL,

QU'APPELLE, - ASSINIBOIA,
 G. S. DAVIDSON, Prop.
 Largely patronized by commercial men and possessing special features for the accommodation of this trade. Large Sample Rooms Free.

Cosmopolitan Hotel,

MEDICINE HAT, - - - ASSA,
 Headquarters for commercial travellers and tourists. Good sample Rooms and clean and comfortable sleeping apartments.

HUGH DEMPSEY, Proprietor.

HOTEL BRUNSWICK,

MINNEDOSA, MAN.

The leading and best appointed hotel on the Manitoba Northwestern Railway. Commercial Travellers seek it for Sundays. Sample room and other conveniences.

J. D. MCKENZIE, Proprietor.

GRAND VIEW HOTEL,

BRANDON, MAN.

Directly opposite Passenger Depot. The leading commercial house. Sample Rooms and first class livery

A. F. BOISSEAU, Proprietor

Wm. Ferguson,

WHOLESALE

WINES - LIQUORS AND CIGARS

Permit Orders Promptly Executed

8th Street, - - Brandon

JOHN HANBURY & CO.,

Wholesale Dealers in and Exporters of

Grain, Flour, Feed and Produce.

Wholesale Agents for several
 LEADING BRANDS OF CIGARS
 Brandon, Man.

Forbes & Stirrett

PLANING MILL

AND SASH AND DOOR FACTORY,

10th St., south Rosser Av

BRANDON

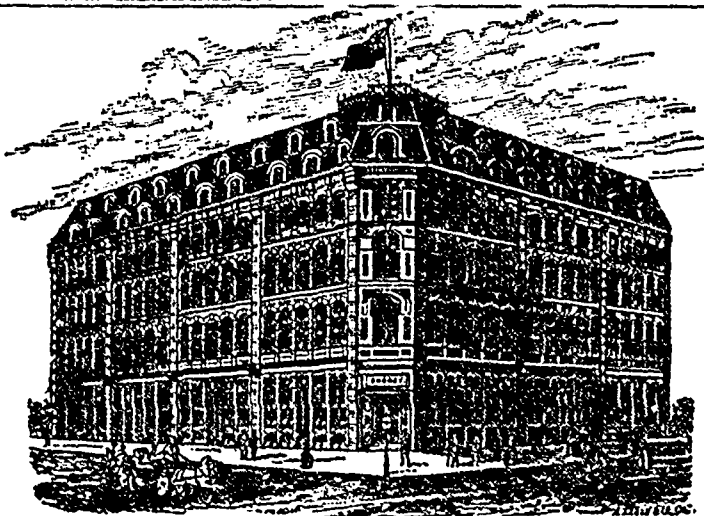
NEUMEYER AND PARES,

Brandon Brewery

BRANDON, MANITOBA

Brewers of the Celebrated Export India Pale Ale, Imperial Stout, Noted XX Porter in Casks or Bottles,

MEN'S, BOYS and YOUTH'S CLOTHING
CHILDREN'S CLOTHING a specialty.



Our Samples for the Autumn Season 1888,
are now on view at 35 Lombard St., Winnipeg

H. SHOREY and CO., WHOLESALE CLOTHIERS,

1836, 1868 and 1870 Notre Dame and 36, 38, 40 and 42 St. Henry St., MONTREAL.

**J. C. DEVLIN,
FLOUR**

MILLSTUFFS, GRAIN,
Farm Produce & Commission Merchant.
Correspondence Solicited.

GOVERNMENT STREET, Victoria, B.C

**Samuel Gray,
SASH, DOORS, BLINDS**

Manufacturer of
Mouldings, Stairs, Handrails, Newels
Baulsters, etc.

VICTORIA, - B.C.

Having made arrangements with the C.P.R., I am prepared to furnish the trade with the above mentioned articles manufactured from the very best seasoned dry cedar and white pine. All work guaranteed. Correspondence solicited. P.O. Box 39, Victoria, B.C.

**PENDRAY & CO
SOAP WORKS,
VICTORIA, B.C.**

Turn out British Mottle Soaps, Electric and Ivory Soaps, Pale Yellow and Brown Soaps, Coconut Oil Toilet Soaps, Soda Crystals and Washing Powders, Superior Shaving Soap.

HUMBOLDT STREET, - VICTORIA, B.C.

**J. & A. Clearihue,
COMMISSION MERCHANTS
AND MANUFACTURERS AGENTS,
Dealers in—**

Fruits and all kinds of Produce

YATES ST., VICTORIA, B.C.

Representing D. Richards, Manufacturer of Laundry and Toilet Soaps, Woodstock, Ontario; Jas. Hall & Co. manufacturers and dealers in Gloves, Mitts and Moccasin, Brockville, Ontario.

**THE DRIARD,
VICTORIA, B.C.**

The only strictly first-class hotel
in the province.

**Colonial Hotel,
WESTMINSTER, B.C.**

Largest hotel in the city; centrally located in business portion. Headquarters for tourists and commercial men. Sample rooms, bath rooms, etc. Fire-proof building. First Class.
LUKE PITHER, Proprietor.

LELAND HOUSE, VANCOUVER,

British Columbia.

The leading commercial hotel of the city. Directly above the C.P.R. Station and Steamboat wharf. All modern improvements. Sample rooms for travellers.

J. E. INSLEY, Mgr. WM. PROUT, Prop

**HY. ARKELL,
WHOLESALE**

**PRODUCE AND COMMISSION
MERCHANT,**

Vancouver, B.C.

MANITOBA PRODUCE a Specialty.

Consignments Received in All Lines.
Correspondence solicited.

The best B.C. Cedar Shingles for sale
by the Car Load.

SAMUEL HOOPER, DEALER IN MONUMENTS, HEAD Stones, Mantle Pieces, Grates, etc. Special designs furnished on application. Cor. Bannatyne and Albert Sts. Winnipeg.

British Columbia.

A. J. Marks has opened in the wall paper line at Vancouver.

J. B. Ferguson has sold his residence at Victoria to J. C. Devlin, commission merchant, for \$3,800.

Leask & Johnson have been appointed agents at Vancouver for M. W. Waitt & Co., of Victoria, for pianos and organs.

A new tailoring establishment has been opened at Vancouver by W. T. Quinn, who has lately come from Portland, Oregon.

British Columbia members of Parliament, urging the granting of a subsidy to the Shuswap and Okanagan railway, interviewed Hon. Mr. Pope at Ottawa lately.

The Legislature has been prorogued by Lieutenant-Governor Nelson, who assented to forty-six bills. One provides for the erection of two sampling reduction works for the purpose of aiding in the development of the quartz ledges of the Cariboo and Kootenay districts.

Vancouver News:—A large seizure of goods was effected by the Custom House officers the other day. A quantity of household goods came up on the steamer Premier from Seattle, and were entered at the Custom House as settlers' effects. On the cases being opened a large quantity of cloth of all shades and styles, and tailors' trimmings, were found hidden amongst the furniture, and were immediately seized. The owner attempted to bribe the Customs officers, but failed most ignominiously. An appraisal of the seized goods resulted in their being valued at considerably over \$1,000.

Following is the 14th Quarterly Report of Nanaimo Equitable Pioneer Society, which operates the co-operative store at Nanaimo:

Sales during the quarter ending
March 31st, 1888 \$15,619 60

Net profits from sales \$1,638 97

DIVIDED.

Members' purchases at 10 per cent.....	\$1,467 00
Eight shares in Building Fund	80 00
Depreciation.....	41 87
Reserve Fund.....	100 00
	\$1,638 97

Members added during the quarter, 22, making a total membership of 300.

Vancouver Herald:—DeWolf returned to the city yesterday. He has made a final selection of the location for the smelter upon the west half of block C in lot 183, and expects that the erection of the works will commence in about a month. A brother of his will come out to reside here as managing director of the company, and two well known gentlemen in the province will act as local directors. The company is prosecuting development work on the claims it recently purchased near Goldan. It is probable, DeWolf says, that one of the best known chemists and assayers in London will come out to take charge of the technical department of the works, and everything will be done to ensure their success, and a very large increase in the capacity of the works through the quantity of ore which will be offered for treatment.

James Hastie, furniture dealer, Victoria, has admitted C. B. Lockhart into partnership; style now Hastie & Lockhart.

MILLER, MORSE & CO.

WHOLESALE

HARDWARE,

BARB WIRE,

HARVEST TOOLS.

PRINCESS STREET, WINNIPEG.

ROBLIN & ATKINSON

WHOLESALE

Grain Shippers,

SPECIALTIES: WHEAT, BARLEY & OATS

P.O. Box 612 WINNIPEG

CORRESPONDENCE INVITED.

JAS. COOPER.

J. C. SMITH

Cooper & Smith,

MANUFACTURERS,

Importers and Wholesale Dealers in

BOOTS AND SHOES!!

36, 38 & 40 FRONT ST. WEST,

TORONTO.

White, Joselin & Co.

Muslins, Embroideries, Lisle and
Silk Gloves, Kid Gloves,
Lace Curtains, Laces.

All the Latest Novelties.

7 WELLINGTON STREET WEST, | 1831 NOTRE DAME STREET,
TORONTO | MONTREAL

STRANG & CO.

Wishart Block, Market St. East,

WHOLESALE GROCERS

AND DEALERS IN

Provisions, Wines and Liquors,

WINNIPEG.

J. A. Brock & Co., photographers, Vancouver, have dissolved partnership. H. T. Devine continues.

Douglas & Hargraves, real estate and commission merchants, Vancouver, have dissolved partnership. The business is continued under the style of D. F. Douglas & Co.

Westminster Columbian:—About thirty-five new houses are in course of erection in this city, and plans are being prepared for nearly as many more. The class of buildings now being erected is far superior to the average dwellings which have been erected heretofore, and though rents are higher, nearly every house is leased before finished.

By the arrival of the steamer *Dunsmuir* the other evening we learn, says the *Nanaimo Free Press*, that the work at the Comox mines of Dunsmuir & Sons is progressing rapidly. Already three miles of the railway line have been cleared and the logs burned. The steamer *Pilot* took up a scow laden with machinery and rails for the new mines. The machinery will be hauled over the old road to the mines. The opening of the seam of coal is progressing vigorously. Mr. Bryden, the manager of the Wellington collieries, and Mr. James Dunsmuir are at the mines superintending the work.

British Columbia continues to impose restrictions upon inter-provincial trade. Regarding the latest move in this direction, the *Columbian* says:—We agree with a number of our contemporaries who have expressed approval of the amendment just made to the municipalities act requiring travelling tradesmen to pay a substantial license wherever they may solicit business. Commercial travellers from the east often do a lot of business in the country that belongs legitimately to the local trader: but the trader is forced to pay taxes, while the other escapes free. During the past twelve months several tailors from the east have visited all the important towns and cities throughout this Province, and have gone home with their pockets full of orders for clothing. They paid no taxes. For many reasons an eastern tailor can make clothing more cheaply than it can be made in this country. Materials there are all cheaper than with us, while wages and all other expenses are less. It is not fair that these people should be permitted to compete with our own workman and escape the taxes we have to pay.

One of the principal establishments of Nanaimo, the coal mining town of B. C., is the co-operative store. It is governed by rules similar to the English co-operative societies. Shares were taken at \$25 each, and paid in full, or \$5 instalments. When about \$1,500 had been raised in this way, a retail store was opened. The business of the society is conducted by a president, secretary and treasurer, and twelve of a committee of management. These are also guided by the instruction of the members at the meetings, which are held every three months, when the quarterly report and balance sheet are read, and the dividend declared. The society now has 300 members, composed of laborers, carpenters, blacksmiths, machinists, teamsters, miners and farmers of the surrounding districts extending as far up as Comox. Dry goods and groceries were sold to the

amount of \$15,619.60, last quarter, realizing a profit sufficient to declare a profit of fifteen cents on the dollar on members' purchases. If not drawn, the dividend is added to his shares. Now that a sufficient amount of capital to sustain the society has been secured, the membership fee has been reduced to \$1. The society have \$22,000 worth of goods in their store, two lots, a good store, the whole costing nearly \$5,000; also three horses, single and double sleighs and wagons. They employ a salesman, a young assistant, a bookkeeper, who also assists in the store, and a teamster, and hire other teamsters and help when business is brisk.

Grain and Milling News.

At a meeting held at Birtle, it was decided to form a milling company, with a capital of \$15,000. A charter will be procured.

By the retirement of J. R. Reilly from the firm of MacCaul, McNichol and Reilly, millers, Regina, Assa., the firm has been dissolved. The business will be continued by MacCaul, MacNichol and Hansell, the latter succeeding to Reilly's interest.

Law & Pearson of Neepawa Man., have instructed Timewell & Son of Winnipeg, to prepare plans and specifications and immediately proceed to call for tenders for the erection of a 50,000 bushel elevator at Neepawa, the elevator to be fitted with all the best machinery for receiving, cleaning and shipping wheat.

Northwestern Miller: Some time ago we quoted the remarks of a miller who said he proposed to run his mill steadily this year, no matter how the market changed, believing that this was the true policy in order to do a successful business. Another miller promptly assailed the idea and gravely asked what would become of the milling industry of the country if every miller should adopt a similar policy. There is but one answer to such a query. Adoption of this policy by all or a majority of the mills of the country which are now in operative condition, would cause so heavy an over-production of flour as would result in driving to the wall very rapidly those millers who are weakest financially. That is the true policy cannot be denied, but its general adoption would be followed by a wide-reaching revolution in the milling industry.

The *Canada Gazette* contains notice of application for the incorporation of the Western Lumber Company, which asks power not only to manufacture lumber, but also to go into the manufacture of flour, paper, etc., and to run and operate steamboats etc. The operations of the company are to be carried on in the provinces of Ontario and Manitoba and in the Northwest Territories, and the head office or chief place of business is to be in Toronto. The amount of the capital stock of the company is to be \$300,000. The names of the applicants are as follows: George Graham of Port Arthur John McCrae, lumber dealer, John Campbell Graham, of Windsor, lumber dealer; James Barry, of Niagara Falls, contractor, and Phillip McCrae, Township of Lancaster, lumber dealers.

Jas. McLaren, an Ottawa valley lumberman, has made another investment in British Columbia, this time purchasing 2440 acres of fine timber land from J. C. Prevost, of Victoria.

Paper Making.

The art of paper making, if not the most important, is at least one of the most useful that has been invented. Paper has, in the present age of rapid advancement and improvement, acquired a degree of importance with which it would not have been credited with a century ago. Being the vehicle of written thought between nations as well as individuals, it has contributed more to the advancement of the human race than any other material employed in the arts; and its manufacture constitutes an art depending more closely than any other upon the march of civilization. Its uses are now beyond number, and the demand for it so general that it has become an article of prime necessity, and one that is daily entering more and more largely into the ordinary wants and ordinary life of all classes.

The word "Paper" is derived from the Greek name of a rush which grew in the swamps on the banks of the Nile, about ten to twelve feet high, and from which the Egyptians manufactured a writing material. The inner cuticles under the coarse exterior portion of the plant were carefully removed, and the thin leaves were laid side by side on a table, moistened with water, and rendered adhesive by the use of a paste made of very fine flour mixed with size or glue. Another layer was laid transversely on the top of the first, and the two were pressed together and dried in the sun, when they became sufficiently cemented to form a sheet. The sheet was then beaten smooth with a mallet, and a surface imparted to it by polishing with a piece of ivory or tooth.

This paper was probably known and used as far back as the third or fourth century B. C., and it continued in general use until the beginning of the sixth century of the present era, when it was superseded by parchment and the paper known as "Carta Bombycina," made from cotton, which latter was then just then being introduced from the East. From the Egyptians, the art of making paper from the papyrus was transmitted to the Romans, who greatly improved it, bestowing more care upon the various operations of washing, pressing, sizing, and smoothing, and they made many different kinds and qualities. The trade in papyrus became considerable, not only at Rome, but throughout the civilized world. The profits from the sale were so large that they produced a revenue sufficient for Firmus, who made himself master of Egypt towards the end of the third century, to boast that he had in his possession as much paper as could support his army. The papyrus, though it was submitted to a special process of manufacture, retained substantially its original form; and it is to the Chinese that the credit is due of having invented the art of making paper from pulp. They were familiar with the art about the beginning of the Christian era, the materials used being the bark of trees, parts of the bamboo cane, rice straw and cotton. The Arabians and Hindoos, by their inroads and conquests in Tartary at the close of the seventh century, learned the art from the Chinese. It was next introduced into Europe through Greece and Spain, the Arabs or Moors bringing it with them in their conquest of Spain during the eighth century,

and the Greeks acquiring it through their commerce with Asia and Egypt. From Greece and Spain, the art was communicated to Germany, France and Holland, and thence it reached England. Paper made from cotton, with authentic dates from the tenth and earlier centuries, is preserved, but linen fibre does not seem to have come into use until later, and cannot be traced back further than the middle of the fourteenth century.

The first account of the construction of a paper mill of any note is the establishment of a large one at Nuremberg, in 1390, by Ulman Stromor, a German, in which he employed a great number of persons for the manufacture of paper from linen and cotton fibre. A century afterwards a mill was afterwards erected in this country, at Stevenage, in Hertfordshire, by Mr. John Tate, to which reference is made in a book printed by Caxton, about the year 1490. In 1588, John Speilman, a German, jeweller to Queen Elizabeth, owned a paper mill near Dartford, for the erection of which he obtained from the Queen his knighthood, and a ten-year monopoly for the gathering of all rags, etc., necessary for the manufacture. Only very common paper, principally for wrapping purposes, was made there, the finer sorts coming always from France and Holland. About the year 1770, Whatman had the courage to examine, in the capacity of a workman, the continental mills. On his return to England he founded the mill at Maidstone, which is known at the present day as the manufactory of the finest hand-made paper. Hitherto, all paper had been made by hand, sheet by sheet. At the end of the eighteenth century, the idea of a machine, for producing at one operation a continuous web of paper from the prepared pulp, was conceived by a Frenchman named Robert. This machine, developed and rendered practicable in England, soon took up a place of first importance in the paper trade; and from this time the manufacture was divided into two distinct branches, known respectively as hand-made and machine-made.

Early in the present century, Berthollet discovered the valuable bleaching properties of chlorine, which at once caused a revolution in the trade; manufacturers were able to produce white paper from materials that had hitherto been debarred from use for that purpose owing to their color. About the year 1844, however, a sudden depreciation arose in the value of white papers, especially the French, due to the indiscriminate use of the bleaching agent. Papermakers, although appreciating its value, were not aware of the necessity of destroying all traces of chlorine in the prepared pulp. This free chlorine gradually acting upon the fibres, injuriously affected their resisting power, and rendered the paper brittle and wanting in tenacity. Since that time the manufacture has steadily progressed.

Until the end of the eighteenth century, paper was made in Europe almost entirely from rags. At this period other substances were adopted as substitutes, due in part, no doubt, to the insufficient supply of rags, and consequent rise. The author has a copy of a publication, printed by Burton, of London, and said to have been written by Matthias Koops; it was published in the year 1800, and is printed

on the first paper made from straw in England. It was dedicated to the reigning Sovereign, George III. An appendix is printed on paper made from wood fibre alone, which, although hardly properly reduced, is strong, tough, and of a light yellow color; the printing shows up well upon it, as also upon the straw paper.

Paper has been made from a great variety of substances without the use of rags; in fact, almost any vegetable fibre can, by proper manipulation, be made into some sort of paper; but the principal substances which have a remarkable value, and are used to any great extent, are esparto, wood and straw.—*British and Colonial Printer and Stationer.*

The London Fur Sales.

The great March fur sales began sooner this year than usual, on account of the earlier approach of Easter.

The Hudson's Bay Company had sales on Monday, March 12, and the three following days, beginning at 10 o'clock. There were offered 11,588 skins otter, only 9 skins sea otter, 6,138 fisher, 944 silver fox, and 3,821 cross fox on the first day. The first eight lots of otter (about 45 skins each) sold at 57s per skin. These were "York Fort," and brought about 3s more per skin than the same grade last season. Wetted (45 skins in each lot) sold 45s per skin. M. R. in 10 lots of 42 each brought 53s. E. M. and F. G. realized the highest prices, 58s and 60s respectively. Seconds (York Fort) declined about 10 per cent. from last March prices, selling at 37s and 38s per skin. The smalls 27s and 28s per skin. In general, small seconds and large thirds went at last March prices, and small thirds at an advance of about 10 per cent. America took most of these, some were for Russia, but very few for England. Some 3,000 more skins otter were offered than at the corresponding sale last year.

Silver fox realized all sorts of prices. Beginning with four skins which brought £33 apiece, they sold as low as 10 per cent. on an average less than last year, and the inferior grades at a reduction of 30 per cent. or 40 per cent. Russia and Germany had most of these. One fine skin brought £40, and 32 skins sold for only £1 2s 0d each.

Red fox Y. F., (17,000 skins) opened at 10s 3d, about the same price as last year. Thirty-two lots of 42 skins each went for 8s 9d per skin. A long string of seconds (50 each) realized 7s 9d and 8s. Some of the poorer lots went as cheap as 3s per skin.

White fox, of which there were 12,978 skins, fell off in price about 40 per cent., the finer skins 20 per cent. Mostly bought by Germans for dyeing, except a few of the best which are for the American market.

Only 72 skins of the expensive blue fox came next, and they brought great prices. Each of the 18 skins in lot 1301 sold for £9, an advance of £1 over last year's price; another lot of seven skins brought £7 each. The French competed with Russian buyers for these valuable skins.

After 250 kitt fox, which brought an average price of 3s 3d, came 78,555 lynx. The best lots of large Y. F. went 10 per cent. higher than last March; N. W. remained about the same. Some large fine skins marked M. R. brought

20s. Seconds and thirds were about 25 per cent. cheaper. American buyers took most of the best skins, France, Germany and England the cheaper grade. Next came 16,332 skunk, which sold as a rule as high as last Spring. Inferior grades declined about 10 per cent. This ended the second day's sale of the Hudson's Bay Co.

The best mink skins sold about 15 per cent. cheaper than a year ago, excepting smalls, which held their price. The seconds and thirds declined fully 20 per cent. German buyers took the bulk of these, and a few were bought for the American market. Only 1,678 beaver were offered and these not very good. The first lot went for 33s 6d per skin, compared with Jan. 33s 6d. Some small ones only brought 7 or 8 shillings, but the inferior quality accounted for the falling off in price. After 1,884 Musquash, at about an average price of 6d. came 4,749 wolf skins. A few Y. F. sold for 25s 3d against 24s last year. Large seconds declined 40 per cent., and the smalls 60 per cent. American buyers took the best, and English nearly all the remainder.

Sundries, odds and ends, etc., finished the Hudson's Bay Co.'s sale, which included goat, ermine (at 7s per 40), hare 8s 6d per doz., Raccoon at 4s 3d, squirrel at 6s per 100, swan 3s a piece, weenusk at 3s. Among the final lots, rabbits', loons', panthers', coons', badgers', lynxes', and sea otters' tails were mingled, and were knocked down to doubtless happy buyers who could start quite a large natural history museum with their purchases if they felt so inclined.

The first sale of C. M. Lampson & Co., took place on Monday afternoon and evening following the sale of the Hudson's Bay Co.

3,031 cross fox were offered, which brought lower prices than at the Hudson's Bay sale.

Lot 1, of 45 skins, sold for 38s each. The best seconds went at 39s. Prices varied considerably. Dark sold as high as 78s and 69s. The lots as usual were most carefully sorted, and some of the fourths and fifths went very cheap at 3s, seconds at 23s, and thirds at 10s to 13s each.

Russian sable, consisting of 4,579 skins, were disposed of the next evening. Opening at 75s for firsts (A. color, silvery), the seconds brought 37s 6d, and 12s 6d. The best prices realized were 210s each for a lot of 14 firsts, 320s each for 12 skins, A. color and silvery, 147s 6d each for 14 skins, 120s each seconds (silvery) and 50s each for firsts (A. color, silvery.)

Blue fox, 2,292 skins, came on the third day's sale, March 14th. The dark firsts sold for 155s and 165s a piece to begin with. The seconds for 125s and 130s. Blue firsts for 125s, 135s and 145s, 105s and 100s. Six skins sold for 280s each, being firsts and seconds. Seven skins, firsts and seconds, blue, for 235s a piece. Pale seconds for 65s and 60s. Thirds for 30s each. Most of these were bought by Revellon & Co., for the French market.

Only 919 skins of the expensive silver fox were offered, the first lot (one skin) going for £36, the second for £29, the third (two skins) at £25 a piece. The price for less choice firsts was £7 10s 0d a skin. One II. skin sold for £32, another for £22, another lot of these at £13,

another £10, and some few seconds as low as £6 a piece. Thirds went for £5, £4 10s 0d, £2 10s 0d, and some as cheap as £1 10s 0d. Fourth for 10s. These lots were all most carefully sorted, and the 912 skins were divided in 8141 lots.

2,436 fisher began at 30s each for 21 skins. Seconds followed at 30s (30 skins). Thirds at 13s and 12s. The highest price obtained for fisher was 59s each for 14 skins. Prices varied according to quality all the way down to 8s and even less.

1,246 Fur Seal opened at 28s each for 34 skins. Other lots (about 25 in all) sold at 10s 20s, 27s, 31s, and fully as low as 6s and 4s each skin.

To sum up the results of Messrs. C. M. Lampson & Co.'s sales in March 1888:

Fox, Cross, sold 20 per cent. lower than a year ago, Russian Sable 15 per cent. lower, Blue Fox 20 per cent. higher, Silver Fox 30 per cent. lower, Sea Otter 25 per cent. lower, Fisher, 6 per cent. lower, Fur Seal, dry, 15 per cent. lower than in January.

Red Fox from United States and Canada, sold 15 per cent. higher than last June, while Asiatic and Alaskan 15 per cent. lower than March last.

Musquash about the same as in January.

Grey Fox, 7½ per cent. lower than in January.

Marten, same as in January.

Skunk, 10 per cent. higher than in January.

Black and short striped advancing most; white and long striped bringing nearly old prices.

Mink 5 per cent. higher than in January. All kinds of small skins in demand. Large

ESTABLISHED 1825.

The J. A. Converse

Manufacturing Co.

A. W. MORRIS & BRO., PROPRIETORS, MONTREAL.

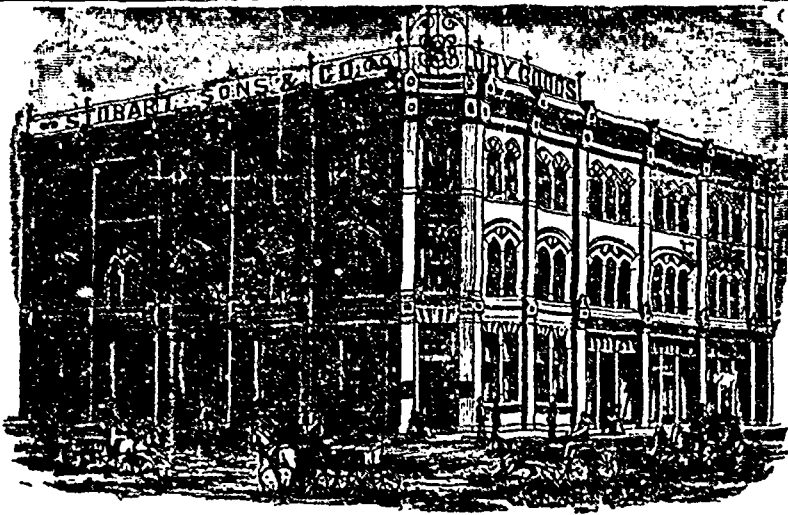
We are the Largest Manufacturers in the Dominion of
Manilla, Sisal, Russian and Jute Cordage.

Binder Twine, Jute and Cotton Bags,

CALCINED AND LAND PLASTER.

REPRESENTED IN WINNIPEG BY MERRICK, ANDERSON & CO.

Importers British & Foreign Dry Goods

A Full Range of Canadian Staples
always in stock.

STOBART, SONS & CO.

POATRGE AVENUE, WINNIPEG.

pale and coarse pelted kinds sold heavily.

Raccoon, 5 per cent. lower than in January, on account of lower prices for poor blue pelts and thirds.

Beaver, same as in January.

Otter sold 15 per cent. higher than in March last year.

Wolf, about the same as January last.

Wolverin, 20 per cent. lower than in March last year.

Black bear, 20 per cent. lower than a year ago. The rough fine pelted sold about the same, but the low pelted heavy sorts declined.

Brown and grizzly bear sold 20 per cent. over than in March, 1887.

Insurance Briefs.

We see it stated that in less than fifty years thirty-four life insurance companies have failed and seventy-eight reinsured.

A new fire engine has been purchased by Vancouver, B. C. It is a duplicate of the present engine, costing in the neighborhood of \$4,000. An new fire hall will be built soon.

The fire tax of the United States, including fire losses, the cost of conducting insurance companies, and the sustaining of fire departments, is not less than \$180,000,000, and is probably \$200,000,000 per annum.

A fire was discovered in Calgary, Alberta, shortly after midnight in a building occupied by Wellington & McKenzie, general dealers. The fire started in the room of Mr. Wellington who was absent at the time. The fire was incendiary in its origin. It was got under control without serious damage.

If Dr. David Hostetter, the bitters man of Pittsburgh, Pa., should step down and out, the life insurance companies would drop \$100,000. He was about to raise the amount to \$1,000,000, but prolonged illness prevented. No man should be permitted to carry such a line of insurance. No man's money value of life is worth any such sum. Such large sums on a single life is a wrong upon those who insure in smaller sums.—*Exchange.*

The Guardian claims that the assessment life insurance companies are paying more in losses to the beneficiaries of deceased members than

are the old line companies. The growth of assessment life insurance during the past few years is simply wonderful. It gets severely criticised by insurance journals generally. We sometimes think the insurance journals give assessment life insurance a vast amount of free advertising, and that this contributes largely to its growth.—*Exchange.*

The old plan life insurance companies are waking up to the fact that they cannot much longer maintain their unnecessarily rigid rules, and they are beginning to make concessions. The latest we note is that of one of the most prominent life companies announcing the issue of a non-forfeiting free tontine policy, which will include the advantages of tontine accumulation, guaranteed options at the end of tontine periods, and perfect freedom, after two years, as to residence, travel and occupation (except service in war). In case of death by reason of engaging in the military or naval service in time of war, the reserve value of the policy will be paid. Now what is wanted is a reduction in the expenses of management, and a reduction in the rate of premium, so as to bring the blessings which life insurance is capable of bestowing within the reach of those most needing them.

Few people have any idea of the magnitude of the life insurance business. From the recent reports of the superintendent of insurance for the State of New York, we learn that the eleven life insurance companies of that State have received in premiums since their organization \$341,926,043, and that they have paid to policy holders \$577,230,493. There are thirty life companies reporting to the New York Insurance Department. These thirty companies have received since their organization in premiums \$1,521,536,694, and have paid to policy holders \$1,087,693,940. Now it is fair to presume taking the general statements of the companies as to their interest earnings, that \$1,500,000,000, at least should be added to the \$1,526,536,694, making the premiums and interest over \$3,000,000,000. Out of this there has been paid to policy holders a small fraction over \$1,000,000,000, leaving the nice plum of \$2,000,000,000, or two dollars for one, for management expenses and in our city officers' parlance, "soap and things."—*Cincinnati Price Current.*

GRANT AND HORN,

PRODUCE and
COMMISSION
• • MERCHANTS. • •

19 Alexander St. West,
WINNIPEG, MAN.

FLOUR EXPORTERS,
AND DEALERS IN
BUTTER AND EGGS, CHEESE
Potatoes in Car Lots.
BALED HAY,
SACKS,
FOR GRAIN AND FLOUR.
COARSE - LIVERPOOL SALT - DAIRY

S. R. PARSONS. HENRY BELL. W. E. HAZLEY

PARSONS, BELL & CO.,

Wholesale Paper Dealers

—AND—
GENERAL STATIONERS.

AGENTS

Canada Paper Company,
Manufacturers Printing, Wrapping & Writing Papers
&c., Montreal and Windsor Mills, Quebec.

Alex. Pirie & Sons,
Manufacturers Fine Stationery, Aberdeen, Scotland.

M. Staunton & Co.,
Manufacturers Wall Papers, Toronto.

GERRIE BLOCK, PRINCESS STREET,
WINNIPEG.

Bookbinding

WARWICK & SONS,

Manufacturing Stationers, Publishers, Book-
sellers, Printers, Bookbinders, etc.

Printers & Binders to the Ontario Government.

TORONTO, ONT.

Bindery furnished with the latest and best
machinery and appliances for turning out first-
class work. WRITE FOR ESTIMATES.

BROWN BROS.,

Wholesale and Manufacturing

STATIONERS,

64 to 68 KING STREET EAST,

TORONTO.

SPECIALTIES.

Account Books Paper—all kinds
Office Supplies Stationery
Wallets. Pocket Books
Ladies Hand Satchels
Pocket and Office Diaries
Leather Goods Binders Material
r uppl

**Business East.
ONTARIO.**

B. Butler, grocer, Port Dover, has sold out.
M. P. De'ouche, tins, Guelph, has assigned.
Edward Daly, hotelkeeper, Lindsay, has sold out.
John Cooper, grocer, Ridgetown, has sold out.
Samuel Best, general storekeeper, Eldorado, has sold out.
Hy. Watson, general storekeeper, Clearville, has sold out.
J. C. Barrows, general storekeeper, Ruthven, has assigned.
Jas. Kidney, general storekeeper, Campbellville, is dead.
Robertson & Johnston, carriages, Harriston, have dissolved.
S. S. Weaver, publisher, Madoc, has removed to Eldorado.
S. B. Morris & Co., bankers, Rodney, advertise to sell out.
R. H. Stephenson, livery, Port Elgin, is giving up business.
Chas. Ashley, carriages, Foxboro, a meeting of creditors held.
A. Lamont, general storekeeper, North Bruce, is about selling out.
Kerby & Purcell, general storekeepers, Rodney, have assigned.
Mrs. J. L. Simpson, general storekeeper, Chesley, has assigned.
Chaffey & Nicholls, general storekeepers, Nov., have dissolved.
Stephens & Adams, general storekeepers, Norwich, have assigned.

J. E. Baxter, grocer, Simcoo, has assigned.
W. W. Cruise, grocer, Sarnia, has assigned.
T. C. Legault, grocer, Ottawa, has assigned.
J. C. White, tinsmith, Almonte, has assigned.
Thos. [Armitage, grocer, Hamilton, has sold out.
M. L. Stevens, grocer, Ingersoll, has sold out.
Mrs. J. J. Ryan, hotelkeeper, Pickering, has sold out.
Ezra R. Armstrong, grocer, Landsdowne, has assigned.
John Kyle, general storekeeper, Seaforth, has sold out.
R. M. Blair, general storekeeper, Bervie, is out of business.
C. O. Rapelje, dealer in books, Essex Centre, is out of business.
L. A. Gauthier, dealer in liquors, Sturgeon Falls, has assigned.
Jos. McKay, general storekeeper, Mount Elgin, has assigned.
Wiseman & Co., dealers in dry goods, St. Thomas, have assigned.
J. & G. Pepler, general storekeepers, Bloomington, have assigned.
Tune & Robertson, dealers in soda water, etc., Stratford, have dissolved.
Alex. Beattie & Co., general storekeepers, St. Marys—Alex. Beattie is dead.
Edward Robinson, manufacturing jeweler, London, is retiring from business.
Lawrence Murphy, dealer in agricultural implements, etc., Seaforth, has assigned.
Rutherford & Hall, general storekeepers, Blenheim, have dissolved—James Rutherford continues alone.

T. Walker, builder, Woodstock, is away.
A. O. Wheeler, builder, Toronto, has assigned.
Geo. Lawrence, dealer in cigars, Toronto, has assigned.
Broderick Bros., grocers, Toronto, have assigned.
Wm. McConnell, grocer and baker, Wyoming, has sold out.
Mrs. Wm. Gibson, tailor, Toronto—style now Gibson & Ball.
Thos. Robertson, dealer in clothing, Toronto, was burned out.
Jas. Hubgood, dealer in shoes, Toronto, stock damaged by fire
Wm. White & Co., dealers in hardware, etc., Tweed, have dissolved.
A. J. Parker, general storekeeper, West Winchester, has assigned.
H. McDonald, dealer in shoes, Tara, is removing to Mount Forest.
D. Cameron, general storekeeper, Underwood, is giving up business.
Hugh McGilvray & Co., planing mill, Toronto, are out of business.
Miss M. A. Stewart, dealer in fancy goods, Port Elgin, is offering to sell out.

QUEBEC.

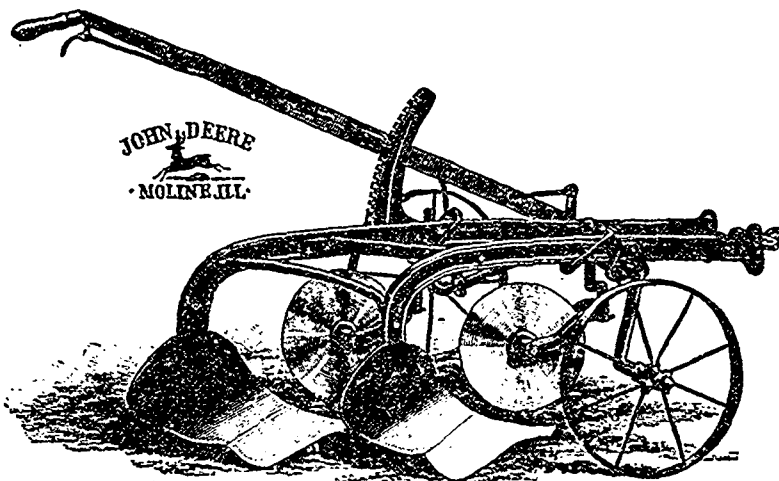
Moore & Honey, roller rink, Montreal, have dissolved.
Rochon & Monette, contractors, Montreal, have dissolved.
Victor E. Rey, general storekeeper, Coaticook, has assigned.
J. O. Bourret & Co., manufacturers of vinegar, Montreal, have dissolved.
Noonan Giblin & Co., wholesale clothiers, Montreal, have assigned.

F. A. FAIRCHILD & CO.

—WHOLESALE DEALERS IN—

**AGRICULTURAL IMPLEMENTS,
CARRIAGES, SLEIGHS, &c**

PLOWS,
SULKY PLOWS,
GANG PLOWS,
HARROWS,
SEEDERS,
FEED CUTTERS,
CRUSHERS,
WAGONS,



BUGGIES,
BUCKBOARDS,
PHAETONS,
SURREYS,
ROAD CARTS,
RUNABOUT WAGONS,
CUTTERS,
SLEIGHS.

CLOSE PRICES TO DEALERS. SEND FOR ILLUSTRATED CATALOGUE AND PRICE LIST.

WINNIPEG.

* * *

* * *

Our Coming Route South.

Manitobans have been so long compelled to travel to St. Paul and Minneapolis over the St. P. M. & M. railway, it being the only available road there, that it is with a feeling of relief that they look forward to the opening of the Red River Valley road to connect with the Northern Pacific, which will give them the much desired, and indeed much needed choice of routes. We say much needed choice, for the monopoly compact between the C. P. R. and St. P., M. & M. roads has been so managed, as to drive all possible trade between here and the east over the former road; where the equipment showed up much better, than it did over the road to St. Paul and Minneapolis.

A representative of THE COMMERCIAL has taken time by the forelock, and made the trip between St. Paul and Pembina over the Northern Pacific, with a view of comparing the new and the old routes, and has no hesitation in stating his preference for the new one.

The reasons for preference are due entirely to the country travelled through, and are not based upon the treatment accorded to passengers on either route. From St. Paul to the Red River Valley the roads are practically similar so far as the country travelled through is concerned. But the monotony from entering the Red River valley until Winnipeg is reached by the road east of the river has always been the great objection to a trip to Manitoba, and those of us who have been compelled to make it frequently, know well how genuine the objection really is. Fortunately by the new route much of this monotony is escaped. From the point where the main line of the N. P. R. is left, namely: Winnipeg Junction, a few miles brings the traveller to a rolling prairie country, with little timber clumps to relieve the eye, and ere he is an hour on his way north he is passing through the beautiful valley of the Wild Rice River, shrouded in brush and poplar, with occasional gnarly old oaks towering above all around. Emerging from this he has another hour's ride over rolling prairie, when he enters and passes through another wooded valley hemming in a winding stream. Thus the scene keeps changing until Red Lake Falls is reached, from which the road follows or skirts the valley of the Red Lake river down to its junction with the Red at Grand Forks. Up to this point the most fastidious traveller could not complain of monotony of scenery, and after crossing the Red River the route lies through Grafton and other thriving Dakota towns, until Pembina is reached, a streak of country well known to Manitobans, and much pleasanter to travel through than the flat monotonous Red River Valley, on the Minnesota side.

Taken altogether the new route will be a great improvement over the old one, so far as pleasing scenery is concerned, and we learn that the Northern Pacific management intend putting on first class sleeping and dining cars through to Winnipeg, and thus furnishing a degree of comfort and convenience hitherto unknown between this city and the Minnesota capital. When they come they will be welcome, we say.

Fire insurance was a losing business in Minnesota last year.



Northern Pacific Railway.

Pembina, Grand Forks, Helena, Butte and all Prominent Montana points.

—THE—

POPULAR TRANS-CONTINENTAL

—AND—

DINING CAR ROUTE

To Spokane Falls, Portland, Seattle, Victoria, B.C., All Puget Sound Points and Alaska.

Express Trains Daily

To which are attached

Pullman Palace Sleepers and Free Colonist Sleeping Cars.

The only rail line to the Yellowstone National Park. For full information, address,

CHAS. S. FEE,
Gen. Passenger and Ticket Agent,
ST. PAUL, MINN.

Manitoba and Northwestern Ry.

CHANGE OF TIME.

Taking Effect Monday, August 15th, 1897

No. 4 MIXED	No. 2 PASS	STATIONS.	No. 1 PASS	No. 3 MIXED
LEAVE 13 00	LEAVE 13 00	Portage la Prairie	ARRIVE 14 45	ARRIVE 14 45
15 30	14 50 Gladstone	14 03	12 20
17 25	16 02 Neepawa	11 35	10 00
19 45	17 00 Minnedosa	10 45	8 40
	18 10 Rapid City	9 00	
22 30	18 48 Snoo Lake	8 52	5 05
24 10	19 55 Birtle	7 45	3 30
	22 25 Binscarth	5 10	
	23 45 Russell	3 45	
	1 05 Langenburg	2 30	
ARRIVE	ARRIVE		LEAVE	LA TR

Meals.
No. 3, Mondays and Thursdays. No. 1, Wednesdays and Saturdays. No. 2, Tuesdays and Fridays. No. 3, Tuesdays and Fridays.
Trains leave Minnedosa for Rapid City Tuesdays and Fridays at 17 10; returning leave Rapid City Wednesdays and Saturdays at 9. For Langenburg leave Birtle Fridays only at 21.00, returning leave Langenburg Saturdays only at 2.30. For Russel leave Birtle Tuesdays only at 21 returning leave Russell Wednesdays only at 3.45, making connection with main line trains.
Above trains connect at Portage la Prairie with trains of the Canadian Pacific Railway to and from Winnipeg.
For information as to Freight or Passenger Rates apply to A. Macdonald, Assistant Freight and Passenger Agent Portage la Prairie, or to
W. R. BAKER, General Superintendent.

THE ROYAL ROUTE.

Chicago, St. Paul, Minneapolis & Omaha
—AND—
Chicago and Northwestern Rys.

Offers the best service, and makes the fastest time of any line between St. Paul and Chicago, and between St. Paul, St. Louis, Omaha, Des Moines and Kansas City; all trains carrying through sleepers and making close connection at Omaha and Kansas City for California points. This is the short line to Chicago, no change of cars and all classes of ticket honored. Two trains a day each way with finest Pullman sleepers and most modern dining cars, on which every delicacy of the season may be obtained at a moderate price. These dining cars are a special feature of the 'Royal Route,' and for liberal service and comfort are unequalled by any in the world.

Buy your tickets over the Chicago, St. Paul, Minneapolis & Omaha Railway, and you will never travel by any other line.

Tickets for sale by all ticket agents.
For time tables and other information apply to
T. W. TEASDALE,
General Passenger Agent.
J. S. McCULLOUGH, St. Paul, Minn. Aest. Gen'l Pass. Agt.
M. M. WHEELER, Trav'g Pass. Agt.



Owens and operates 5,650 miles of thoroughly equipped road in Illinois, Wisconsin, Iowa, Missouri, Minnesota and Dakota.

It is the Best Direct Route between all principal points in the Northwest, Southwest and Far West.

For maps, time tables, rates of passage and freight, etc. apply to the nearest station agent of the CHICAGO, MILWAUKEE & ST. PAUL RAILWAY, or to any Railroad Agent anywhere in the World.

ROSWELL MILLER, General Manager.
J. F. TUCKER, Ass't Gen'l Manager.
A. V. H. CARPENTER, Gen'l Pass. and Tkt. Agt.
GEO. H. HEAFFORD, Ass't Gen'l Pass. and Tkt. Agt.
MILWAUKEE, WISCONSIN.

For information in reference to Lands and Towns owned by the CHICAGO, MILWAUKEE & ST. PAUL RAILWAY COMPANY, write to H. G. HAUGAN, Land Commissioner, Milwaukee, Wisconsin.

TRAVEL VIA THE

Minneapolis and St. Louis Railway
AND THE FAMOUS
Albert Lea Route

	Lvs St. Paul	Lvs Minneapolis
Chicago, Burlington, Kansas City and Des Moines Ex.	a 8.45 a.m.	a 9.25 a.m.
St. Louis Fast Ex.	b 6.25 p.m.	b 7.05 p.m.
Chicago Fast Ex.	d 6.25 p.m.	d 7.05 p.m.
Des Moines Passenger	a 6.25 p.m.	a 7.05 p.m.
Excelsior and Watertown	a 8.00 a.m.	a 8.45 a.m.
Arlington and Excelsior	a 1.15 p.m.	a 1.00 p.m.
Mankato Express Accom.	a 3.15 p.m.	a 4.00 p.m.
a Ex Sunday b Ex Saturday	d Daily.	

THROUGH COACHES AND PULLMAN PALACE SLEEPERS to Chicago, St. Louis and Des Moines
DIRECT LINE TO WATERTOWN, D. T.

PALACE DINING CARS ON CHICAGO TRAINS.
2—THROUGH TRAINS DAILY—2
to KANSAS CITY, LEAVENWORTH, ATCHISON or ST. JOSEPH, making connections in Union Depots for all points west.

Fast and frequent trains between St. Paul, Minneapolis and Lake Minnetonka points.

For maps, sleeping car berths, or other information all upon any agent in the Northwest or write to

S. F. BOYD,
General Ticket and Passenger Agent, Minneapolis