

Technical and Bibliographic Notes/Notes techniques et bibliographiques

The Institute has attempted to obtain the best original copy available for filming. Features of this copy which may be bibliographically unique, which may alter any of the images in the reproduction, or which may significantly change the usual method of filming, are checked below.

L'Institut a microfilmé le meilleur exemplaire qu'il lui a été possible de se procurer. Les détails de cet exemplaire qui sont peut-être uniques du point de vue bibliographique, qui peuvent modifier une image reproduite, ou qui peuvent exiger une modification dans la méthode normale de filmage sont indiqués ci-dessous.

- Coloured covers/
Couverture de couleur
- Covers damaged/
Couverture endommagée
- Covers restored and/or laminated/
Couverture restaurée et/ou pelliculée
- Cover title missing/
Le titre de couverture manque
- Coloured maps/
Cartes géographiques en couleur
- Coloured ink (i.e. other than blue or black)/
Encre de couleur (i.e. autre que bleue ou noire)
- Coloured plates and/or illustrations/
Planches et/ou illustrations en couleur
- Bound with other material/
Relié avec d'autres documents
- Tight binding may cause shadows or distortion along interior margin/
La reliure serrée peut causer de l'ombre ou de la distortion le long de la marge intérieure
- Blank leaves added during restoration may appear within the text. Whenever possible, these have been omitted from filming/
Il se peut que certaines pages blanches ajoutées lors d'une restauration apparaissent dans le texte, mais, lorsque cela était possible, ces pages n'ont pas été filmées.
- Additional comments:/
Commentaires supplémentaires:

- Coloured pages/
Pages de couleur
- Pages damaged/
Pages endommagées
- Pages restored and/or laminated/
Pages restaurées et/ou pelliculées
- Pages discoloured, stained or foxed/
Pages décolorées, tachetées ou piquées
- Pages detached/
Pages détachées
- Showthrough/
Transparence
- Quality of print varies/
Qualité inégale de l'impression
- Includes supplementary material/
Comprend du matériel supplémentaire
- Only edition available/
Seule édition disponible
- Pages wholly or partially obscured by errata slips, tissues, etc., have been refilmed to ensure the best possible image/
Les pages totalement ou partiellement obscurcies par un feuillet d'errata, une pelure, etc., ont été filmées à nouveau de façon à obtenir la meilleure image possible.

This item is filmed at the reduction ratio checked below/
Ce document est filmé au taux de réduction indiqué ci-dessous.

10X	12X	14X	16X	18X	20X	22X	24X	26X	28X	30X	32X
					✓						





THE
7
DOMINION OF CANADA,

WITH PARTICULARS AS TO ITS
EXTENT, CLIMATE, AGRICULTURAL RESOURCES,
FISHERIES, MINES,
MANUFACTURING AND OTHER INDUSTRIES ;

ALSO, DETAILS OF
HOME AND FOREIGN COMMERCE ;

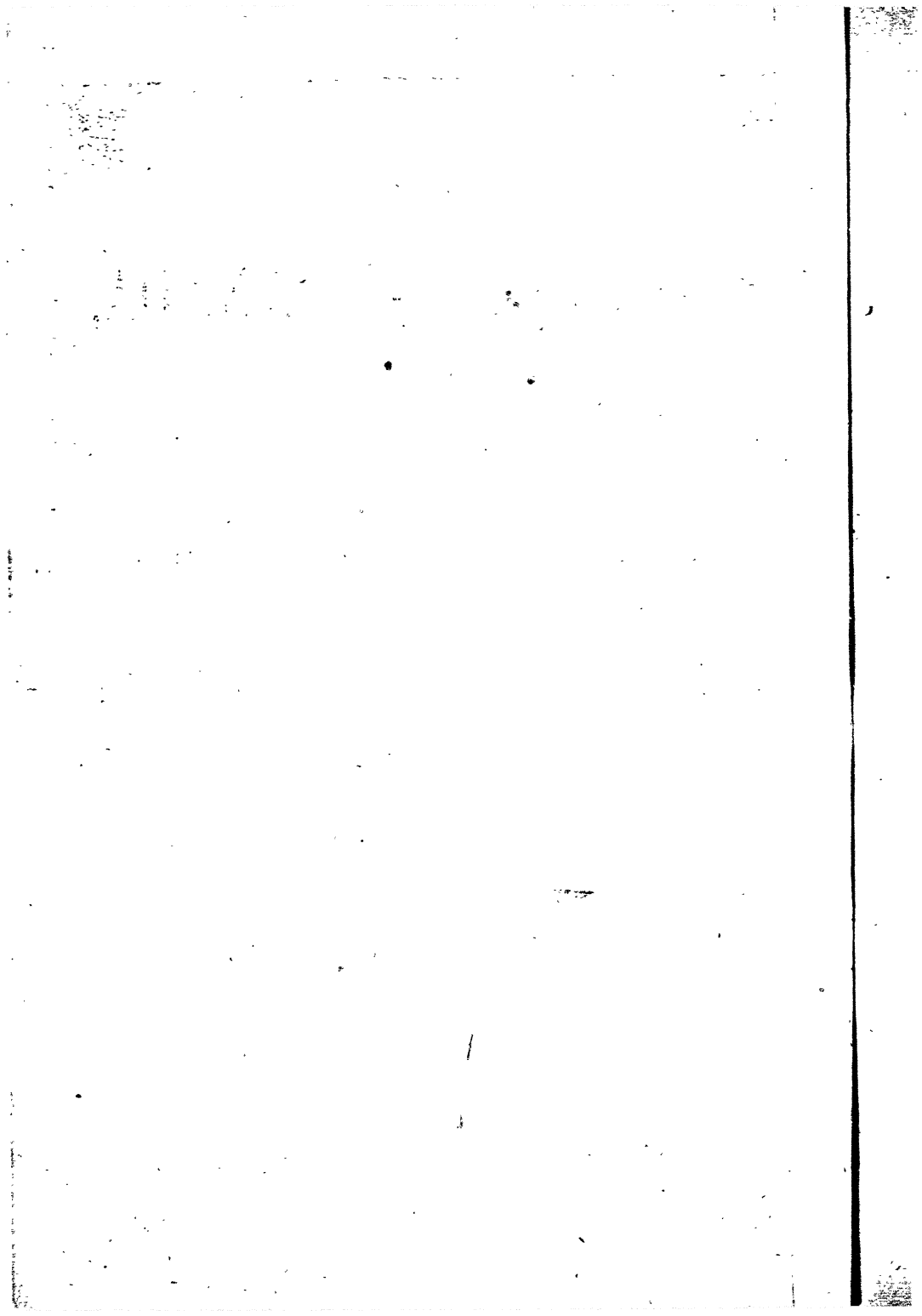
INCLUDING
A SUMMARY OF THE CENSUS OF 1881.

By WM. J. PATTERSON.

MONTREAL :
PRINTED BY D. BENTLEY & CO., NOTRE DAME STREET.



1883.



THE
DOMINION OF CANADA,

WITH PARTICULARS AS TO ITS

EXTENT, CLIMATE, AGRICULTURAL RESOURCES,
FISHERIES, MINES,
MANUFACTURING AND OTHER INDUSTRIES ;

ALSO, DETAILS OF

HOME AND FOREIGN COMMERCE ;

INCLUDING

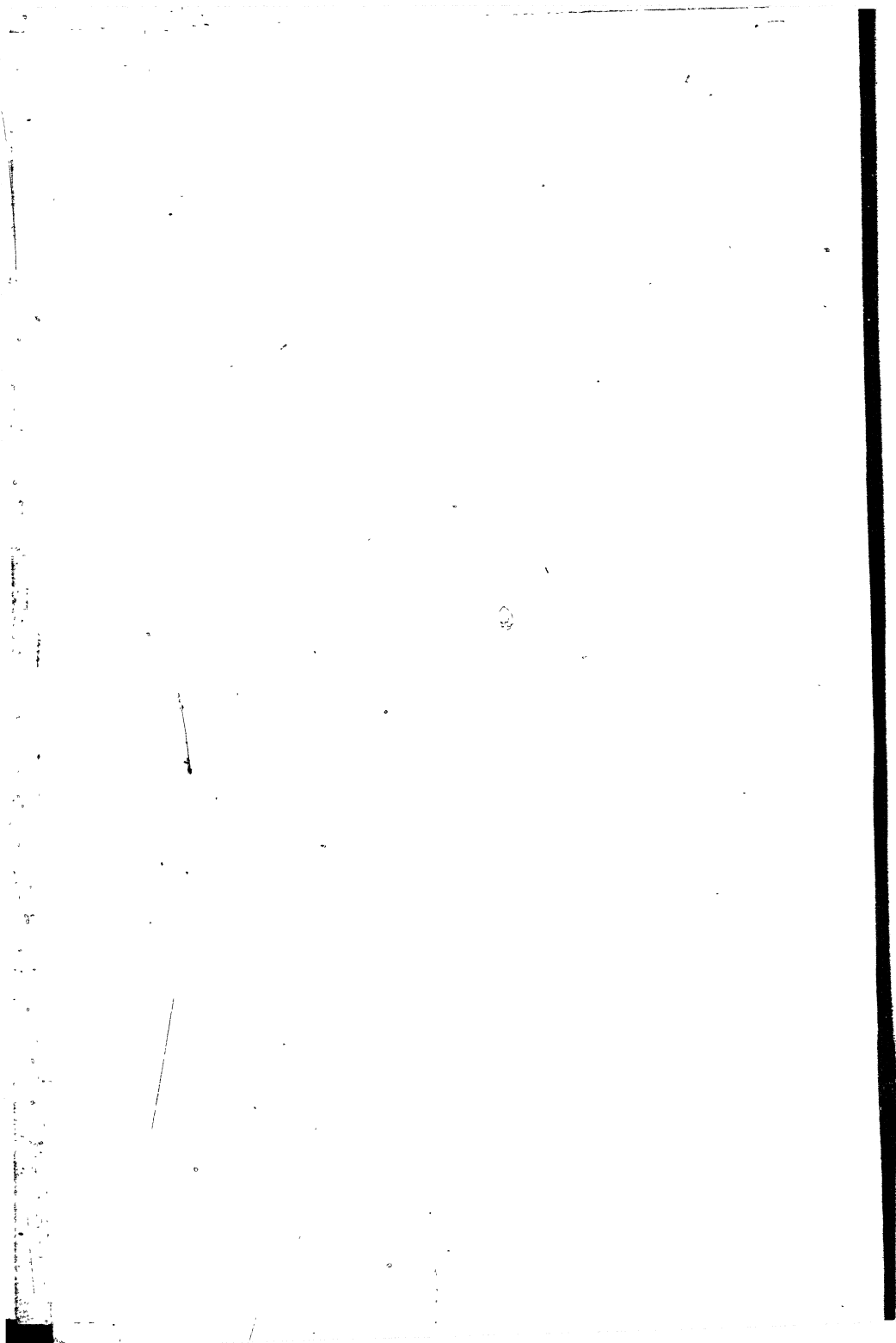
A SUMMARY OF THE CENSUS OF 1881.

By WM. J. PATTERSON.

MONTREAL :

PRINTED BY D. BENTLEY & CO., NOTRE DAME STREET.

1883.



HON. SIR S. LEONARD TILLEY, K.C.M.G.,

Minister of Finance,

OTTAWA.

SIR,

Allow me the privilege of inscribing this publication to you, as the Member of the Privy Council under whose cognizance passes, in one way or another, most of the questions vital to the prosperity of Canada.

I have made considerable use of the third volume of the Census. Whatever its defects or seeming incongruities may be, it was, at any rate, considered that such a summary as is herein presented for handy reference, might be useful to some extent, as showing approximately how much the Dominion has progressed during the decade.

The Notes on the Tables, and the Commercial Statements, indicate how rapidly Canada has grown, and foreshadow its future greatness.

The section on *Climatology* will amply repay careful examination.

I have the honor to be,

SIR,

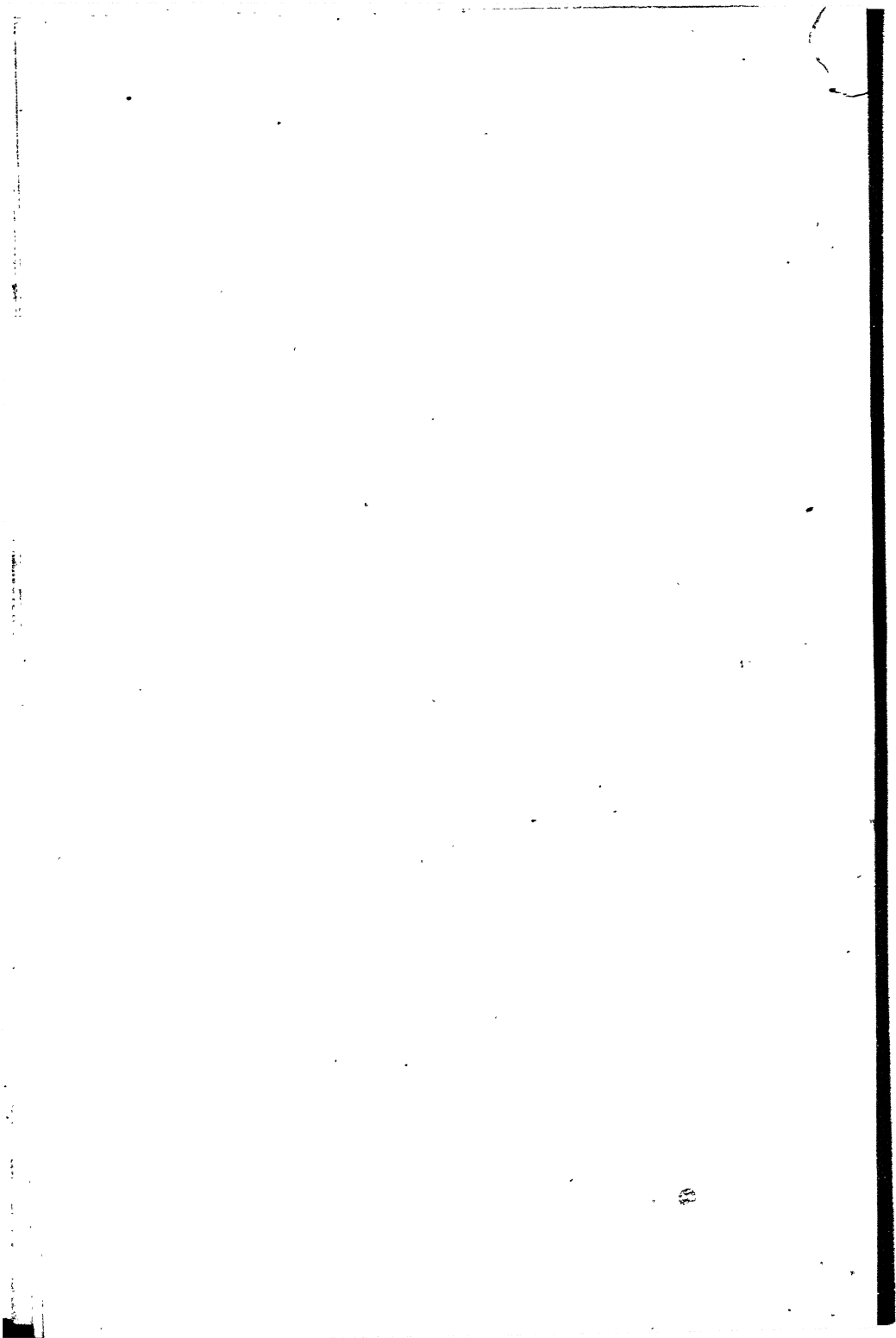
Your obedient Servant,

WM. J. PATTERSON,

Secretary.

OFFICE BOARD OF TRADE,

MONTREAL, 24th July, 1883.



CONTENTS.

SUMMARY OF THE DOMINION CENSUS.

	PAGE.
General Remarks.....	9
TABLE I.—A Summary Statement, by Provinces, of the Population of the Dominion, with the ratios of increase. The aggregate amount of Capital Invested, and Total Values of Products, are also shown	10
TABLE II.—Showing the increases of Males and Females during the decade; also, the numbers of Females to Males; and the proportions of Occupied and Unoccupied Lands to each person in the Dominion, by Provinces....	11
TABLE III.—Comparative Statement of the Population of Cities and Towns in the Dominion having more than 5,000 inhabitants, showing increases and decreases	12
TABLE IV.—A Summary showing various kinds of Immovable Property held, the number of Ships and other Vessels owned, &c.	13
TABLE V.—Summary Statement of the numbers of Owners and Occupiers of Lands, and description of Land Owned and Occupied,—showing also the acreage under Crops, Pasture &c.	14
TABLE VI.—Statement showing the numbers of Working Animals and Farm Stock,—the numbers of Slaughtered Animals, and quantities of other Animal Products.....	15
TABLE VII.—Summary Statement, by Provinces, of the Quantities yielded by the several kinds of Grain,—and the acreage under Wheat, Potatoes, and Hay, (the figures presumably relating to 1880.).....	16
TABLE VIII.—Statement of Quantities of other Agricultural and Home-made Articles, also the Value of Furs	17
TABLE IX.—Summary of Quantities of the various Products of the Forest, (the figures presumably relating to 1880)	18
TABLE X.—This Statement embraces the number of Vessels, Boats, Men, and Nets employed in the Fisheries of the Dominion, the catch of the various kinds of Fish, the yield of Fish Oils, &c.....	19
TABLE XI.—Statement showing the Extent of the Mining Industries of the Dominion, the Quantities of Raw Minerals produced, including Petroleum, Salt, &c.....	20
TABLE XII.—Comparative Summary (1881 and 1871) showing Manufacturing and Industrial Enterprises throughout the Dominion, Capital Invested, Value of Productions, &c.	21—24
Comparative Summary	24

TABLE XIII.—Comparative Statement, collated from the Census of 1881 and 1871, showing the number of the various Manufacturing and Industrial Establishments in Montreal and Suburbs, number of sex and persons employed, amount of Wages paid per annum, Value of Raw Material used, and Value of Articles produced	25—28
--	--------------

NOTES TO THE FOREGOING STATEMENTS.

Capital, Area, Population ; Rapid increase of Immigration	29
Extent of Fertile Land in the North-West	30
Working Animals, Farm Stock, and Animal Products	31
Yield of the various Cereal Crops	32
Product of Cereal Crops in Ontario	33
Yields of Cereal Crops in the Canadian North-West	34
Comparison of Yields of Cereals in Canada and the United States	34
Home-made and Farm Products	35
Products of the Forest	35
Productions of the Fisheries of Canada	36
Extent of Mining Industries	36
Details of Manufacturing Industries,—Cotton Mills	37; 38
“ “ Woollen Mills	39—41

CLIMATOLOGY OF CANADA.

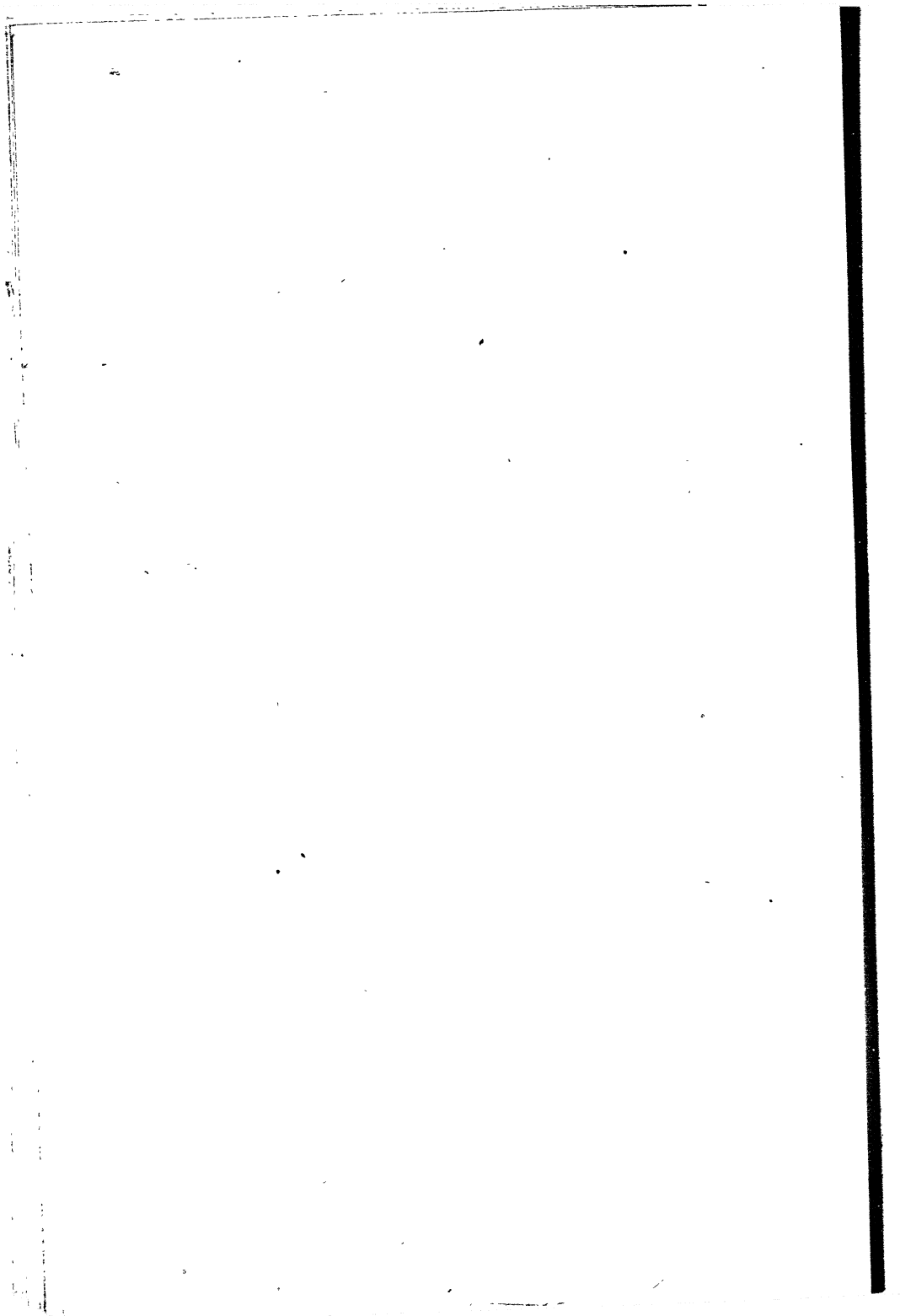
A Current Fallacy	42
Temperature, Snow, and Rain-Fall	43—48

GENERAL SUMMARY OF CANADIAN COMMERCE AND INDUSTRY.

1. Items in the Postal Service of Canada	49
2. Chartered Banks, &c.	50
3. Inland communications by Railways and Canals	52
Railway Passenger and Freight Traffic	52
Canadian Canal System and Inland Navigation	53
Traffic on Canadian Canals	54
Traffic on the Upper Lakes	54—57
Linking the Provinces	58
4. The General Foreign Commerce of Canada	58
Imports and Exports, analysis of	59—61
Statements relating to the Import Trade of Canada, by Countries, for three years	62—64
Statement showing total exports of the Dominion during the past five years	65
Statements showing total Import and Export Trade of the Dominion for six years	66
Statement Showing Import, Export, and Aggregate Trade, also amounts of Customs Duty collected, during fifteen years	67
5. The Canadian Sugar Trade	67
1878 to 1882	67
Sugar Refining	68

Beet-Root Sugar Making	68
The Course of the Sugar Trade	69
Recapitulation for fiscal year 1882	70
6. Other Staple Groceries, &c.	71
Molasses, Cane Juice, &c.	71
Coffee	71
Teas	72
Distilled and Fermented Liquors	72, 73
7. Coal Trade of the Dominion, 1882	74
Quantities of Coal Imported and Exported	74—76
Consumption of Coal in Montreal	76
8. The Canadian Lumber Trade	77
Timber, Deals, Planks and Boards exported	77
Lumber Trade of the Ottawa Valley	78
Comparative Statement of the Supply, Export, and Stock of Lumber..	80
9 The Trade in Breadstuffs	81
Imports and Exports of Grain, Flour, and Meal	81
General Summary of the Canadian Wheat and Flour Trade	82
10. Trade in Dairy Produce	83
11. The Cattle Export Trade	84
12. Periods of Canal Navigation	85
13. Direct Trade with Foreign Countries	86





A SUMMARY

OF THE

DOMINION CENSUS, 1881.

GENERAL REMARKS.

IN a work like that of the Census Volume, laid before Parliament at the recent session, it would be a wonder if there were no inaccuracies. Where there is such a multiplicity of figures, relating to an almost endless variety of detail on every subject of interest to the public,—collected often, it may be, by persons who have no adequate appreciation of the necessity for painstaking accuracy,—it need not be surprising that, in the volume referred to, the staff of collaters and summarizers has not infrequently failed to present faultless results. The preface says:—

“It may be well to mention, that in numerous cases where custom work is taken in and the raw material furnished by the customer, such as Carding Mills, Grist Mills, Tailors' Work, Dressmaking, &c., much difficulty was experienced in obtaining the value of raw material worked up. Although many of these establishments are small, the aggregate value of the raw material used and the products would have been considerably augmented, had the information been more readily obtainable. Where sufficient data existed, estimates were made. It should also be stated, that in a few cases owners of large establishments refused to supply the information asked for.”

The Secretary has had some experience of what is complained about in the last sentence of this extract; and he duly appreciates how easy it is to be censorious,—but is disposed to take the volume for 1881, and its congener for 1871, with their many faults, and to endeavor to utilize the good that can be extracted from them. Of course, blame for erroneous or misleading information should lie on other shoulders. Waiving animadversion, therefore, his present purpose is simply to notice what may fairly be considered to be approximates as to the advancement of the Dominion in course of a decade, taking the statements as he finds them. With that end in view, a good deal of care has been bestowed in re-forming the summaries of the different classes of information; and it is hoped that, in the main, the series of Tabular Statements on the following pages, may be found tolerably serviceable.

Some contrasts and additional information are given in the Notes that follow these Tables, which will assist the reader to estimate the progress still being made in some directions. The comparisons between 1881 and 1871 for the whole Dominion are necessarily defective,—confined as they are to statements relating to the older Provinces.

TABLE I.—A Summary Statement, by Provinces, of the Population of the Dominion, with the ratios of increase. The aggregate amount of Capital Invested, and Total Values of Products, are also shown.

	1871.	1881.	Increase.	Rate per cent.
SUMMARY OF POPULATION.				
Prince Edward Island.....	94,021	108,891	14,870	15.8
Nova Scotia.....	387,800	440,572	52,772	13.6
New Brunswick.....	285,594	321,233	35,639	12.4
Quebec.....	1,191,516	1,359,027	167,511	14.6
Ontario.....	1,620,851	1,923,228	302,377	18.6
Total.....	3,579,782	4,152,951	573,169	16.0
Manitoba.....	18,995	65,954	46,960	247.0
British Columbia.....	36,247	49,459	13,212	36.3
The Territories.....		56,446		
Total.....	55,242	171,859	60,172	
Grand total for the Dominion...	3,635,024	4,324,810	633,341	18.98
SUMMARY OF CAPITAL INVESTED.				
Prince Edward Island.....		2,085,776		
Nova Scotia.....	6,041,966	10,183,060	4,141,094	68.5
New Brunswick.....	5,976,176	8,425,282	2,449,106	40.9
Quebec.....	28,071,868	59,216,992	31,145,124	110.9
Ontario.....	37,874,010	80,950,847	43,076,837	113.7
Total.....	77,964,020	158,776,181	80,812,161	103.6
Manitoba.....		1,383,331		
British Columbia.....		2,952,835		
The Territories.....		104,500		
Total.....		4,440,666		
Grand Total for the Dominion..		165,302,623		
SUMMARY OF VALUES OF PRODUCTS.				
Prince Edward Island.....		3,400,208		
Nova Scotia.....	12,338,105	18,575,326	6,237,221	50.5
New Brunswick.....	14,367,687	18,512,658	4,144,971	6.5
Quebec.....	77,205,182	104,662,258	27,457,076	35.5
Ontario.....	114,706,799	157,989,870	43,283,071	37.7
Total.....	221,617,773	299,740,112	78,122,339	35.2
Manitoba.....		3,413,026		
British Columbia.....		2,926,784		
The Territories.....		195,938		
Total.....		6,535,748		
Grand Total for the Dominion..		309,676,068		

TABLE II.—Showing the increases of Males and Females during the decade; also, the numbers of Females to Males; and the proportions of Occupied and Unoccupied Lands to each person in the Dominion, by Provinces.

PROVINCES.	Proportion per cent. to each Province		Persons Sq. Mile.	Acres to a Person.	Acres of unoccupied land to a Person.	Increase—Males and Females.				
	Acres.	Persons.				Numerical		Per Cent.		Females to 100 Males.
						Numerical	Per Cent.	Numerical	Per Cent.	
Prince Edward Island06	2-51	51-0	12-5	2-2	7,608	16-1	7,262	15-4	98-9
Nova Scotia60	10-18	21-0	30-3	18-1	26,746	13-8	26,026	13-4	99-7
New Brunswick78	7-42	11-8	54-1	42-2	18,231	12-5	17,408	12-4	95-7
Quebec	5-44	31-42	7-2	88-8	79-5	82,134	13-7	85,377	14-3	100-4
Ontario	2-93	44-47	18-9	33-8	23-8	147,880	17-8	154,497	19-5	96-9
Manitoba	3-55	1-52	.53	1,195-5	1,159-3	27,457	281-6	19,502	210-9	77-2
British Columbia	9-83	1-14	.14	4,456-9	4,409-5	8,971	43-7	4,241	26-9	67-6
The Territories	76-80	1-30	.02	30,219-3	30,213-7	100-7
Totals for Dominion	99-99	9-996	1-24	513-5	503-0					

TABLE III.—Comparative Statement of the Population of Cities and Towns in the Dominion having more than 5000 inhabitants, showing increases and decreases.

NOTE.—In 1871 there were in Canada, 00 cities and towns of 5,000 inhabitants and over, with a total population of 430,043. In 1881 the number of such cities and towns had increased to 37, having a total population of 660,040.

NAMES.	PROVINCES	POPULATION.		Numerical increase or decrease.	Percentage.
		1871.	1881.		
Montreal	Quebec	107,225	140,747	33,522	31.21
Toronto	Ontario	56,092	86,415	30,323	54.05
Quebec	Quebec	59,699	62,446	2,747	4.60
Halifax	Nova Scotia	29,582	36,100	6,518	22.03
Hamilton	Ontario	26,716	35,961	9,245	34.60
Ottawa	Ontario	21,545	27,412	5,867	27.23
St. John	New Brunswick	28,805	26,127	2,678	9.29
London	Ontario	15,826	19,746	3,920	24.76
Portland	New Brunswick	12,520	15,226	2,706	21.61
Kingston	Ontario	12,407	14,091	1,684	13.57
Charlottetown	Prince Edward Island	8,807	11,485	2,678	30.40
Guelph	Ontario	6,878	9,890	3,012	43.79
St. Catherines	Ontario	7,864	9,631	1,767	22.46
Brantford	Ontario	8,107	9,616	1,509	18.61
Belleville	Ontario	7,305	9,516	2,211	30.26
Trois-Rivers	Quebec	7,570	8,670	1,100	14.53
St. Thomas	Ontario	2,197	8,367	6,170	280.83
Stratford	Ontario	4,313	8,239	3,926	91.02
Winnipeg	Manitoba	241	7,985	7,744	3213.27
Chatham	Ontario	5,873	7,873	2,000	34.05
Brockville	Ontario	5,102	7,609	2,507	49.13
Levis	Quebec	6,691	7,597	906	13.54
Sherbrooke	Quebec	4,432	7,227	2,795	63.06
Hull	Quebec	†	6,890
Peterborough	Ontario	4,611	6,812	2,201	47.73
Windsor	Ontario	4,253	6,561	2,308	54.26
St. Henri	Quebec	†	6,415
Fredericton	New Brunswick	6,006	6,218	212	3.49
Victoria	British Columbia	3,270	5,925	2,655	81.19
St. Jean Baptiste (village)	Quebec	4,408	5,874	1,466	33.25
Sorel	Quebec	5,636	5,791	155	2.75
Port Hope	Ontario	5,114	5,585	471	9.21
Woodstock	Ontario	3,982	5,373	1,391	34.93
St. Hyacinthe	Quebec	3,746	5,321	1,575	42.04
Galt	Ontario	3,827	5,187	1,360	35.53
Lindsay	Ontario	4,049	5,080	1,031	25.46
Moncton	New Brunswick	†	5,032
Totals	494,699	641,703	147,004	29.71

* The indicated decrease of the population of the city of St. John is attributable to the great fire which occurred in the year 1877, when half of the city was laid in ashes. Great numbers were thereby driven into the surrounding districts, and many whose business and social ties were thus severed, did not return to the City.

† The limits of the city of Hull and the towns of St. Henri and Moncton not having been defined in 1871, no comparison can be made. Leaving out the above city and towns, the total increase and rate per cent. are as represented in the table.

TABLE IV.—A Summary showing various kinds of Immovable Property held, the numbers of Ships and other Vessels owned, &c.

	Aggregates for the Dominion.	Totals for Prince Edward Island.	Totals for Nova Scotia.	Totals for New Brunswick.	Totals for Quebec.	Totals for Ontario.	Totals for Manitoba.	Totals for British Columbia.	Totals for the Territories.
Number of Owners.....	588,973	16,663	67,129	46,162	175,731	266,485	11,913	4,044	846
Acres of Land Owned.....	67,645,162	1,278,307	7,446,065	6,046,183	18,600,878	23,309,961	10,160,359	621,166	182,243
Town and Village Lots.....	419,116	6,789	22,452	18,700	70,165	264,352	26,729	8,566	1,363
Number of Houses.....	712,440	17,362	69,932	48,456	210,653	345,941	12,019	6,835	1,242
Warehouses, Factories, &c.....	110,170	4,050	17,508	7,948	37,598	39,583	1,532	1,436	515
Barns and Stables.....	860,985	17,818	65,308	51,890	310,573	398,774	11,655	3,878	1,089
Vessels.....	721	11	44	46	293	259	17	51
Steam Vessels... {	200,023	4,001	4,446	4,817	132,097	44,550	2,362	7,750
Average Size.....	277	364	101	103	172	172	139	152
Vessels.....	3,909	224	1,960	649	757	289	4	23	3
Sea-going Sail- ing Vessels... {	860,450	41,236	441,929	210,583	110,356	55,058	181	957	200
Average Size.....	220	184	235	334	146	191	45	42	67
Vessels.....	1,782	32	232	195	945	268	21	77	12
Barges and other such Craft	96,468	315	3,385	3,979	58,509	27,055	1,545	1,600	80
Average Size.....	54	10	15	20	62	101	74	61	7
Vessels.....	6,412	267	2,236	890	1,995	816	42	151	15
Grand Totals... {	1,156,941	45,552	440,760	219,329	300,962	126,663	4,088	10,307	280
Tonnage.....									

TABLE V.—Summary Statement of the numbers of Owners and Occupiers of Lands, and description of Lands Owned and Occupied,—showing also the acreage under Crops, Pasture, &c.

	Aggregates for the Dominion.	Totals for Prince Edw'd Island.	Totals for Nova Scotia.	Totals for New Brunswick.	Totals for Quebec.	Totals for Ontario.	Totals for Manitoba.	Totals for British Columbia.	Totals for the Territories.
Total Population.....No.	4,324,810	108,891	440,572	321,233	1,359,027	1,923,228	65,954	49,459	56,446
Occupiers of Lands....."	464,025	13,629	55,873	36,837	137,863	206,989	9,077	2,743	1,014
Being Owners....."	403,491	12,736	51,710	33,901	123,932	169,140	8,742	2,410	1,920
Being Tenants....."	57,245	812	3,929	2,786	12,344	36,690	301	313	-40
Employes....."	3,289	51	234	150	1,587	1,159	34	20	54
Occupiers of 10 acres & under	75,286	1,188	12,471	4,827	19,150	36,221	284	1,013	132
" of 11 acres to 50....."	93,325	4,280	13,636	8,828	24,564	41,497	300	294	26
" of 51 acres to 100....."	156,672	5,087	14,504	13,323	47,686	76,282	679	195	16
" of 101 acres to 200...."	102,243	2,517	10,742	6,748	34,723	42,476	4,046	666	325
" of 200 acres and over.."	36,499	557	4,620	3,111	11,740	11,513	3,868	676	515
Condition of Lands—									
Total Occupied.....Acres	45,358,141	1,126,653	5,396,382	3,809,621	12,625,877	19,259,909	2,384,337	441,255	314,107
Total Improved....."	21,899,181	596,731	1,880,644	1,253,299	6,410,264	11,294,109	250,416	184,885	28,833
Under Crops....."	15,112,284	467,211	942,010	849,678	4,147,984	8,370,266	230,264	83,657	21,214
Pasture....."	6,385,562	126,935	917,010	392,169	2,207,422	2,619,038	17,197	98,457	7,354
Gardens and Orchards	401,335	2,585	21,624	11,452	64,858	304,805	2,955	2,771	286

TABLE VI.—Statement showing numbers of Working Animals and Farm Stock,—the numbers of Slaughtered Animals, and quantities of other Animal Products.

	Aggregates for the Dominion.	Totals for Prince Edward Island.	Totals for Nova Scotia.	Totals for New Brunswick.	Totals for Quebec.	Totals for Ontario.	Totals for Manitoba.	Totals for British Columbia.	Total for the Territories.
Working Animals.—Horses..No.	857,855	25,182	46,044	43,957	225,006	473,906	14,504	20,172	9,084
Colts and Fillies	201,503	6,153	11,123	9,018	48,846	116,392	2,235	5,950	1,786
Working Oxen	132,593	84	33,275	8,812	49,237	23,263	12,269	2,319	3,334
Farm Stock.—Milch Cows..	1,595,800	45,895	137,639	103,905	490,977	782,243	20,355	10,878	3,848
Other Horned Cattle..	1,786,596	44,743	154,689	99,783	490,119	896,661	27,657	67,254	5,690
Sheep	3,048,678	166,496	377,801	221,163	889,833	1,359,178	6,073	27,788	346
Swine	1,207,619	40,181	47,256	53,087	329,199	700,922	17,358	16,811	2,775
Animals killed or sold—									
Cattle	657,781	15,200	63,389	35,414	160,207	363,043	4,936	13,696	1,796
Sheep	1,496,465	58,872	151,245	88,743	436,336	748,972	1,382	10,683	232
Swine	1,302,503	26,836	56,259	59,904	333,159	796,548	18,674	10,411	712
Other Products.—Wool ...Lbs.	11,300,736	552,083	1,442,440	760,531	2,730,546	6,013,216	16,452	85,148	330
Honey	1,875,745	14,945	24,500	78,293	559,924	1,197,928	1,080	365

TABLE VII.—*Summary Statement, by Provinces, of the Quantities yielded by the several kinds of Grain,—and the acreage under Wheat, Potatoes, and Hay ;—(the figures presumably relating to 1880).*

	Aggregates for the Dominion.	Totals for Prince Edward Island.	Totals for Nova Scotia.	Totals for New Brunswick.	Totals for Quebec.	Totals for Ontario.	Totals for Manitoba.	Totals for British Columbia.	Totals for the Territories.
Wheat—Acres sown No.	2,366,554	41,942	45,045	40,831	224,678	1,949,135	51,293	7,952	5,678
Spring Wheat, yield . . . Bshl.	12,102,817	546,872	522,602	517,997	1,999,815	7,213,021	1,029,378	153,485	119,614
Winter Wheat, yield . . . "	20,247,452	114	6,649	3,959	19,189	20,193,067	4,295	20,168	11
Barley, yield "	16,844,868	119,368	228,748	84,183	1,751,539	14,279,841	253,694	79,140	48,445
Oats, yield "	70,493,131	3,538,219	1,873,113	3,297,534	19,990,205	40,208,929	1,270,268	253,911	59,952
Rye, yield "	2,097,180	307	47,567	18,268	430,242	1,598,871	1,203	482	240
Peas and Beans, yield "	13,749,662	3,169	37,220	43,121	4,170,436	9,434,872	8,991	59,542	1,291
Buckwheat, yield "	4,901,117	90,458	339,718	1,587,223	2,041,670	841,649	320	59	50
Corn (Maize) yield "	9,925,142	2,603	389,718	18,159	888,169	8,096,782	2,516	1,433	1,948
Potatoes—Acres sown No.	464,289	39,083	60,192	51,362	123,869	181,394	4,306	3,272	811
Yield Bshl.	55,268,227	6,012,191	7,378,387	6,961,016	14,873,287	18,893,896	556,193	473,831	89,336
Tunlaps, yield "	39,059,094	1,198,407	1,006,711	990,336	1,572,476	33,856,721	149,025	270,625	14,893
Other Root-crops, yield "	9,192,320	42,572	326,143	159,043	2,050,904	6,479,222	49,096	82,249	3,091
Hay—Acres sown No.	4,458,349	119,936	519,836	389,721	1,495,494	1,795,965	100,691	28,149	8,337
Yield Tons.	5,655,810	143,791	597,731	414,046	1,614,906	2,038,659	185,279	43,898	17,500
Grass & Clover Seed, yield, Bshl.	321,317	15,247	8,128	7,257	119,306	173,219	303	857

TABLE VIII.—Statement of Quantities of other Agricultural and Home-made Articles,—also the Value of Furs.

	Aggregates for the Dominion.	Totals for Prince Edward Island.	Totals for Nova Scotia.	Totals for New Brunswick.	Totals for Quebec.	Totals for Ontario.	Totals for Manitoba.	Totals for British Columbia.	Totals for the Territories.
Home-made Butter	Lbs. 102,545,169	1,688,690	7,465,285	6,527,176	30,636,397	5,862,365	957,152	343,387	70,717
" Cheese	3,184,996	196,273	501,655	172,144	559,278	1,701,721	49,613	33,252	1,060
Flax-Seed	Bshl. 108,694	919	1,793	1,745	65,995	38,208	34
Flax and Hemp	Lbs. 2,056,353	25,175	63,750	26,713	865,340	1,073,197	2,148	30
Home-made Cloth & Flannel, yds	7,040,259	514,982	1,329,817	808,462	2,958,180	1,426,558	1,875	308	377
" Linen	" 1,293,802	30,988	68,038	51,466	1,130,301	13,641	68	191	9
Fruits—Apples	Bshl. 13,377,655	31,501	908,519	233,096	777,557	11,400,517	190	28,100	175
Grapes	Lbs. 3,896,508	795	35,015	2,108	158,031	3,697,555	13	2,961	30
Other Fruits	Bshl. 811,219	2,547	18,485	6,122	155,543	644,707	1,443	12,347	25
Maple Sugar	Lbs. 20,556,049	25,098	217,481	483,124	15,687,835	4,169,706	2,796
Tobacco	" 2,527,962	1,367	1,216	6,414	2,356,581	160,251	2,037	96
Hops	" 905,307	10,209	18,677	15,006	218,542	615,967	1,836	24,899	72
Value of all Furs	\$ 987,555	1,524	17,177	13,895	163,310	129,578	80,452	153,442	428,177

TABLE IX.—Summary of Quantities of the various Products of the Forest (the figures presumably relating to 1880).

	Aggregates for the Dominion.	Totals for Prince Edward Island.	Totals for Nova Scotia.	Totals for New Brunswick.	Totals for Quebec.	Totals for Ontario.	Totals for Manitoba.	Totals for British Columbia.	Totals for the Territories.
Square Pine—White.... cub. ft.	40,729,047	1,524	124,451	130,762	4,840,462	12,262,870	2,168	23,348,500	18,610
Red..... "	2,815,755	342	35,726	31,954	654,721	1,848,927	232,585	11,500
Square Oak..... "	5,670,894	1,180	22,876	3,316	59,587	5,448,263	138,672
Tamarac..... "	4,653,575	11,270	106,069	256,389	2,707,745	1,615,360	32,792	23,950
Birch and Maple..... "	4,414,795	93,742	549,330	348,441	2,784,395	612,760	26,000	127
Elm..... "	3,191,968	290	1,393	2,400	163,049	2,925,382	99,454
Walnut—Black..... "	59,032	59,032
Soft..... "	754,219	5,001	13	66,806	682,399
Hickory..... "	387,619	630	7,998	377,811	300	880
All other Timber..... "	48,956,958	797,851	4,091,517	2,371,061	14,382,814	26,200,058	622,059	436,792	54,806
Pine Logs..... No.	22,324,407	5,260	497,785	657,400	5,400,273	14,945,670	14,742	798,119	5,198
Other Logs..... "	26,025,584	192,083	2,250,593	5,001,069	8,182,434	7,621,610	240,033	2,483,024	62,738
Masts, Spars, &c..... "	192,241	196	8,703	54,406	104,248	23,721	900	67
Staves..... " M.	41,881	1,177	13,147	955	3,685	22,857	10	148	2
Lath-wood..... " Cords.	98,311	814	5,585	3,434	31,881	50,365	279	6,053
Tan Bark..... "	400,418	629	10,843	55,535	285,940	45,921	1,650
Firewood..... "	10,993,234	159,619	637,084	781,729	3,638,928	5,435,414	219,784	82,277	38,399

TABLE X.—This Statement embraces the number of Vessels, Boats, Men, and Nets employed in the Fisheries of the Dominion, the catch of the various kinds of Fish, the yield of Fish Oils, &c.

	Aggregates for the Dominion.	Totals for Prince Edward Island.	Totals for Nova Scotia.	Totals for New Brunswick.	Totals for Quebec.	Totals for Ontario.	Totals for Manitoba.	Totals for British Columbia.	Totals for the Territories.
Vessels Employed.....No.	1,147	25	755	205	146	5	1	10
Men.....“	8,440	127	6,854	743	677	14	4	21
Boats Employed.....“	30,427	2,704	13,214	4,284	6,761	1,129	1,009	1,126	200
Men.....“	43,621	5,226	17,782	5,956	9,974	2,101	1,322	1,924	236
Shoremen.....“	7,992	439	2,291	616	4,093	76	477
Nets.....“.....Fathoms.	3,150,259	59,793	1,171,394	336,089	435,307	928,008	90,172	87,695	41,801
Fascines.....“.....No.	3,868	13	733	333	1,639	681	3	406
Cod.....“.....qds.	1,130,771	18,736	587,203	62,444	462,388
Haddock, Hake & Pollock...“	192,539	7,656	128,578	49,716	6,589
Herrings.....“.....Brls.	574,503	21,501	140,831	263,832	130,354	15,605	2,380
Gaspereaux.....“.....“	28,856	956	11,348	16,175	42	335
Mackerel.....“.....“	248,031	91,792	120,242	25,272	10,725
Sardines.....“.....“	25,384	4	85	20,935	4,360
Halibut.....“.....“	2,799	11	2,088	43	657
Salmon.....“.....“	73,897	23	1,583	19,276	2,910
Shad.....“.....“	10,385	4	6,776	1,700	1,861	41	50,105
Eels.....“.....“	8,012	197	1,520	584	5,601	110
Whitefish.....“.....“	48,781	14	40	886
Trout.....“.....“	64,324	42	307	355	6,916	4,350	77	5,113
Other Fish.....“.....“	170,052	425	16,962	23,682	82,985	55,497	36	1,057	114
Canned Lobsters.....“.....Lbs.	11,983,648	3,275,316	3,841,476	4,349,122	18,666	17,795	8,918	619
Oysters.....“.....Brls.	189,127	175,408	2,407	11,116	517,734
Fish Oil.....“.....Gals.	870,323	8,139	275,352	78,470	263,374	1,629	1,444	237,492	4,432

TABLE XI.—Statement showing the Extent of the Mining Industries of the Dominion, the Quantities of Raw Minerals produced, including Petroleum, Salt, &c.

	Aggregates for the Dominion.	Totals for Prince Edward Island.	Totals for Nova Scotia.	Totals for New Brunswick.	Totals for Quebec.	Totals for Ontario.	Totals for Manitoba.	Totals for British Columbia.	Totals for the Territories.
Gold	70,015 ounces.	15,167	2,192	152	52,390	114
Silver	"	22	2	87,000
Copper—ore	tons.	2,000	6,007	170
Iron Ore	"	53,878	500	74,242	91,877	2,560
Pyrites	"	19,590	1,180
Manganese	"	316	2,133
Other Ores	"	4,424	300	564	121	515
Coal	"	1,013,345	24,589	268,300	1,590
Plumbago	"	28
Gypsum, lump	"	177,081	995	5,000
Phosphate of Lime	"	165	8,924	5,658
Mica	pounds.	15,876	200
Petroleum, crude	gallons	15,490,622
Salt	barrels.	472,000	4	70
Grained Marble	cubic feet	12	5,000
Building stone for dressing	"	214,819	221,655	3,885,656	3,698,488	325
Roofing Slate	squares.	9,000	1,536

TABLE XII.—Comparative Summary (1881 and 1871) showing Manufacturing and Industrial Enterprises throughout the Dominion, Capital Invested, Value of Productions, &c.

INDUSTRIES.	1881.			1871.		
	Capital Invested.	Number of Hands Employed.	Total Annual Value of Products.	Capital Invested.	Number of Hands Employed.	Total Annual Value of Products.
	\$		\$	\$		\$
Aerated water making.	318,785	401	435,183	116,315	217	225,677
Agricultural implem'ts.	3,995,782	3,656	4,405,397	1,104,308	2,546	2,685,393
Bakeries of all sorts....	2,509,621	3,963	9,476,975	1,054,531	2,664	6,942,469
Baking Powder making	53,100	115	129,100	3,430	8	11,500
B'nk n'te engrav'g estab.	200,000	94	100,000	100,000	82	60,000
Bark extract works....	162,000	140	286,250	210,000	139	352,150
Basket making.....	88,612	227	55,651	17,250	182	82,032
Bell foundries.....	15,600	13	18,000	27,200	23	28,000
Belt and hose factories.	49,825	32	126,961	24,000	25	105,000
Billiard table making..	22,500	20	44,827	8,000	6	16,000
Blacking manufactories.	32,900	23	26,000	25,400	38	47,065
Blacksmithing.....	3,056,653	12,451	7,172,469	1,720,638	10,213	5,364,411
Boat building.....	104,011	421	173,837	31,298	297	95,576
Boiler making.....	132,700	330	324,253	52,500	258	363,150
Bone crushing mills...	2,800	6	5,500	11,800	11	11,205
Book binding.....	636,624	1,036	1,445,708	180,700	592	512,211
Boots and shoes.....	6,491,042	18,949	17,895,903	3,266,633	18,719	16,133,638
Breweries.....	4,592,990	1,411	4,768,447	1,666,140	918	2,141,229
Brick and tile making..	946,729	4,129	1,541,892	435,915	3,073	925,235
Broom & brush making.	353,325	957	762,884	144,897	542	528,665
Butter factories.....	97,027	151	341,478
Button factories.....	117,800	470	173,630	9,000	34	11,500
Cabinet and furniture..	3,943,419	5,857	5,471,742	2,050,175	4,366	3,580,978
Car & locomotive works	1,630,598	3,154	3,956,361
Carding & fulling mills.	580,417	901	1,498,343	752,962	1,224	2,253,794
Cardboard m'ufactories	44,000	16	30,000
Carpenters & joiners...	1,242,531	5,702	3,893,910	779,667	5,408	3,726,345
Carpet making.....	3,992	15	10,690
Carriage making.....	3,798,861	8,713	6,579,082	1,859,609	7,798	4,849,234
Carving and gilding...	219,997	418	516,675	92,580	180	213,780
Cement mills.....	57,400	128	91,658	56,000	66	51,300
Charcoal burning.....	55,843	83	70,030	4,363	86	15,812
Cheese factories.....	1,021,435	2,003	5,464,454	400,754	998	1,601,738
Chemical establishm'ts.	522,890	223	534,600	465,900	202	810,250
Chicory kiln.	300	2	350
Chocolate factory.....	10,000	12	27,000
Church decorations....	43,700	48	160,300
Cider making.....	72,821	270	131,450	17,139	108	42,606
Coffee and spice mills..	339,250	145	728,600
Cooperages.....	759,311	3,277	1,808,929	450,514	3,442	1,772,663
Cordial & syrup making	34,800	39	112,070	153,019	165	580,328
Cork cutting.....	54,600	31	73,100	83,800	31	51,260
Corset factories.....	38,200	320	229,000
Cotton factories.....	3,476,500	3,527	3,759,412	632,000	745	781,800
Cutlery.....	86,000	67	100,000	2,100	11	11,520
Dentistry.....	6,000	10	9,750
Distilleries.....	1,303,000	285	1,790,800	737,200	467	4,092,537
Dressmak'g & millinery	1,601,239	7,838	4,926,871	504,868	3,877	2,585,679
Dyeing and scouring...	82,558	164	118,516	37,850	106	124,871

TABLE XII.—Continued.

INDUSTRIES.	1881.			1871.		
	Capital Invested.	Number of Hands Employed.	Total Annual Value of Products.	Capital Invested.	Number of Hands Employed.	Total Annual Value of Products.
	\$		\$	\$		\$
Edge tool making.....	569,435	546	657,364	177,915	376	418,775
Engine building.....	990,300	1,061	1,338,000	709,900	1,007	1,044,525
Engraving & lith'phing	492,030	474	496,718	117,920	127	135,900
Fire-proof safe making.	153,000	124	126,000	52,800	118	97,675
Fishing tackle making.	5,000	6	7,050	180	2	1,694
Fittings & foundry working in brass, iron, lead, &c.....	1,797,897	2,194	2,684,131	457,412	991	893,368
Flag making.....	300	3	900
Floor oil cloth making.	105,000	20	105,000	30,000	10	50,000
Flour and grist mills...	13,857,923	6,472	41,772,372	9,929,898	4,992	39,135,919
Foundries and machine working.....	7,675,911	7,789	8,863,957	3,760,505	7,653	7,325,531
Furriers and hatters. . .	1,934,862	2,350	3,352,961	1,159,038	1,861	2,875,060
Gas works.....	5,358,490	512	1,173,181	2,480,645	299	750,200
Glass works.....	307,000	642	569,000	136,120	318	293,130
Glove and mitt making	133,580	532	434,864
Glue making.....	169,200	83	164,097	27,300	37	34,200
Gold and silversmith'g.	174,586	153	235,822	31,686	52	89,500
Gold leaf factory.....	4,000	17	25,000
Grindstone works.....	70,700	204	50,737	58,509	328	78,395
Gunsmithing.....	58,650	59	55,555	33,200	43	34,877
Gunpowder mills.....	131,000	87	254,200	94,000	22	124,000
Gypsum mills.....	141,150	89	57,375	164,250	278	170,514
Hosiery manufactories..	630,821	1,556	1,385,730	52,525	245	199,122
India rubber factories..	851,500	525	771,000	454,600	494	502,615
Indian manufactures...	29,585	344	86,871	7,095	534	54,273
Ink factories.....	900	2	2,150	400	1	550
Iron smelting furn. and steel making.....	2,172,100	974	1,197,514	492,000	624	298,000
Jewellers & watchm'k'rs	490,030	778	914,769	204,512	463	427,897
Lamp & chand'er mak'g	61,000	78	64,000
Last factories.....	52,700	118	77,900	33,250	82	54,357
Lime kilns.....	309,354	2,537	707,132	128,508	2,042	502,156
Linseed oil factory.....	25,000	20	55,000	26,800	30	75,112
Lock making.....	57,600	175	138,800
Match factories.....	564,847	1,062	511,250	106,015	1,127	230,137
Mathematical Instrument making.....	27,500	22	21,000	8,060	14	11,000
Mattress making.....	29,850	59	57,074	8,400	21	31,340
Meat curing.....	1,449,677	852	4,084,133	419,325	841	3,799,552
Miscellaneous wares...	959,781	1,839	1,690,148	322,954	1,041	959,076
Morocco manufactory..	400	2	1,000
Musical ins'tment mak'g	669,379	941	1,220,195
Nail and tack factories.	1,245,500	951	1,689,450	201,050	498	622,162
Native wine making...	86,800	36	59,620	382,050	590	1,147,380
Nut and bolt works....	166,497	153	225,800
Oil cloth'g establishm'ts	3,305	47	9,490	2,780	48	13,439
Oil refineries.....	1,812,700	490	4,049,685	624,940	494	3,094,669
Opium factory.....	51,500	3	79,000
Pail & tub factories....	236,025	150	120,935	73,580	114	172,754

TABLE XII.—Continued.

INDUSTRIES.	1881.			1871.		
	Capital Invested.	Number of Hands Employed.	Total Annual Value of Products.	Capital Invested.	Number of Hands Employed.	Total Annual Value of Products.
Paint & varnish works.	\$ 712,415	281	\$ 1,311,300	\$ 84,850	67	\$ 294,700
Painters and glaziers...	198,562	759	728,067	78,459	503	377,470
Paper manufactories...	2,237,950	1,520	2,446,693	610,400	760	1,071,651
Paper bag & box mak'g.	122,557	258	198,474
Paper collar factory....	25,000	42	25,000	58,000	96	115,000
Patent medicine manu- factories.....	302,300	216	666,580	57,650	73	171,050
Photographic galleries.	492,469	422	409,427	189,976	352	338,005
Pickle making.....	11,820	28	26,420
Picture frame making..	3,500	2	5,000
Planing & mould'g mills	447,630	633	992,201
Plaster and stucco w'ks.	38,005	84	86,450	4,850	51	40,820
Pot & pearl ashes.....	138,604	467	345,096	155,416	945	515,290
Potteries.....	351,328	696	571,885	170,868	359	330,619
Prepared peat fuel f'tory	120	1	600	85,000	292	29,000
Preserv'd articles of food	1,222,558	8,453	2,685,861	82,066	552	262,053
Printing offices.....	4,291,136	5,311	4,742,904	2,168,660	3,497	3,420,202
Pulp mills.....	92,000	68	63,300
Pump factories.....	197,517	470	377,975	66,964	280	191,820
Quartz crushing mills..	223,000	268	260,269	441,200	325	220,718
Rivet factories.....	69,000	27	72,000	6,000	14	25,000
Rolling mills.....	697,500	699	1,026,900	440,000	762	1,680,000
Roofing felt factories..	115,000	124	284,600	13,200	11	14,902
Rope and twine making	722,300	529	775,460	210,660	450	769,840
Saddle & harness mak'g.	1,323,845	2,911	3,233,973	631,866	2,667	2,465,321
Salt works.....	298,100	247	595,848	206,100	185	136,599
Sash, door & blind fac- tories.....	1,996,858	2,878	4,872,362	967,294	2,519	3,008,641
Saw and file cutting....	470,150	362	859,360	127,512	172	276,523
Saw mills.....	25,487,233	2,085	38,541,752	16,040,589	35,691	30,256,247
Scale factories.....	79,940	52	80,600	29,000	58	85,750
Screw factory.....	200,000	66	50,960
Scutching mills.....	220,050	992	431,062	107,782	559	269,818
Sewing machine f'tories	921,260	1,188	1,048,277	346,400	966	1,123,464
Shingle making.....	448,147	2,389	766,998	489,073	3,100	891,995
Ship material making..	224,325	394	586,575	232,323	372	882,271
Ship yards.....	1,570,916	4,454	3,557,258	1,084,425	6,046	4,432,262
Shirt, collar & tie mak'g.	441,951	1,491	1,255,614
Shoek & fishbox mak'g.	111,570	268	228,785	15,900	47	39,030
Silk mills.....	131,700	211	275,000
Skate factory.....	6,000	20	9,000	45,000	73	90,000
Soap and candle mak'g.	916,025	479	1,956,653	279,821	301	1,323,853
Spike and railway chair factory.....	38,000	41	144,000	24,775	30	80,000
Spinning wheel factories	26,024	41	24,912	9,599	74	26,805
Spring & axle factories..	135,200	196	246,400	89,850	163	238,812
Starch factories.....	308,000	141	212,000	121,000	72	222,684
Stave mills.....	124,300	265	168,520
Steel barb fence factory.	3,000	3	12,000
Stone & marble cutting.	835,760	1,991	1,846,483	200,704	1,169	1,072,874
Straw works.....	116,465	232	112,261	265,305	608	538,250

TABLE XII.—Continued.

INDUSTRIES.	1881.			1871.		
	Capital Invested.	Number of Hands Employed.	Total Annual Value of Products.	Capital Invested.	Number of Hands Employed.	Total Annual Value of Products.
Sugar refineries.....	\$ 2,150,000	723	\$ 9,627,000	425,000	359	\$ 4,132,750
Sugar and syrup mak'g from sorghum, beet root, etc.....	145,900	215	237,830
Superphosphate works..	252,200	41	90,500
Surgical appliances....	51,400	45	37,200	11,900	20	18,820
Tailors and clothiers....	5,719,729	18,029	15,102,963	1,721,903	11,092	9,345,875
Tanneries.....	6,386,222	5,491	15,144,535	2,656,166	4,207	9,184,932
Tent and awning f'tories	15,000	36	44,000	5	2,000
Thread making.....	15,000	130	19,000
Tin & sheet iron w'rk'g.	1,993,054	3,685	2,738,246	789,216	2,351	2,392,638
Tobacco pipe factories..	18,830	64	20,300	7,500	98	39,060
Tobacco working.....	1,829,420	3,757	3,060,306	573,145	2,216	2,435,343
Tree-nail & wedge m'k'g	500	2	1,400
Trunk and box making.	383,578	626	677,877	100,793	517	536,430
Type foundries.....	83,000	56	76,550	43,500	84	66,000
Vermicelli & macaroni making.....	23,000	22	22,500
Vinegar factories.....	151,500	59	270,162	47,040	41	180,312
Wall paper factories....	100,000	50	100,000
Wax candle & taper factories.....	5,073	27	15,140	4,285	15	8,224
Whip factories.....	14,434	72	53,404	6,170	28	21,618
Wig making.....	72,597	76	52,770	24,901	57	47,643
Window shade factories.	68,045	53	59,450	4,670	9	15,900
Wire works.....	90,000	66	213,000
Wood turning.....	190,382	604	431,797	63,986	161	99,950
Wool cloth making....	5,272,376	6,877	8,113,055	2,776,814	4,453	5,507,549
Grand Totals..	165,302,623	254,935	309,676,068	77,964,020	187,942	221,617,773

COMPARATIVE SUMMARY.

The following is a comparative view, by Provinces, of Capital Invested, Value of Products, and number of Employees.

	Capital Invested.		Value of Products.		Persons Employed.	
	1881.	1871.	1881.	1871.	1881.	1871.
	\$	\$	\$	\$	No.	No.
Prince Edward Island.	2,085,776	3,400,208	5,767
Nova Scotia	10,183,060	6,041,966	18,575,326	12,338,105	20,390	15,595
New Brunswick	8,425,282	5,976,176	18,512,658	17,367,687	19,922	18,352
Quebec	59,216,992	28,071,868	104,662,258	77,205,182	85,673	66,714
Ontario	80,950,847	37,874,010	157,989,870	114,706,799	118,308	87,281
Manitoba	1,388,331	3,413,026	1,921
British Columbia	2,952,835	2,926,784	2,871
The Territories	104,500	195,988	83
Totals	165,302,623	77,964,020	309,676,068	221,617,773	254,935	187,942

TABLE XIII.—Continued.

Description of Industry.	1891.										1871.									
	Number of Establishments.	Persons employed.		Amount of Wages per annum.	Value of Raw Material used.	Value of Articles produced.	Number of Establishments.	Persons employed.		Amount of Wages per annum.	Value of Raw Material used.	Value of Articles Produced.								
		Male.	Female.					Male.	Female.											
Clothiers.....	169	1187	4137	\$ 2,468,212	\$ 3,870,496	100	392	1,652	\$ 268,635	\$ 1,133,327	\$ 1,924,130									
Coffee and Spice Mills.....	8	52	14	346,000	483,000									
Cooperage.....	22	147	59,335	138,588	23	153	44,483	44,015	134,101									
Corkcutting.....	1	20	5,000	60,000	2	22	7	7,200	27,000	50,500									
Corset Factories.....	2	7	41	4,300	34,000									
Cotton Mills.....	1	276	448	134,200	860,000	1	38	85	19,500	77,000	129,000									
Distilleries.....	2	10	16	6,500	138,000	1	45	16,000	60,000	210,000									
Dress making & Millinery..	270	13	980	115,322	824,071	100	20	640	63,742	328,632	534,656									
Dyers.....	6	18	16	7,586	36,600	4	17	12	6,534	2,330	17,540									
Edge Tool Manufactories...	5	98	40,200	108,500	2	28	15,400	21,375	70,700									
Engine Building.....	1	150	50,000	145,000	4	432	125,400	109,250	331,175									
Engraving & Lithography	11	275	123	145,450	426,000	9	94	13	43,210	34,700	118,600									
Fittings and Foundry Work-	24	674	3	237,304	660,100	13	529	29	151,840	261,090	5,272,687									
ings in Brass, Iron, Lead, &c.	1	13	1	15,000	110,000	1	10	4,500	23,500	50,000									
Floor Oil Cloth Factory.....	7	195	5	208,300	2,504,170	5	104	32,680	1,876,000	2,093,109									
Flour and Grist Mills.....	19	710	3	244,962	384,130	16	723	2	226,734	210,296	681,900									
Foundries & Machine Shops	113	839	13	337,075	1,216,295	35	363	20	104,499	129,442	349,145									
Furniture.....	46	428	793	321,254	2,059,934	38	298	658	200,370	846,494	1,704,328									
Furriers.....	1	126	60,000	312,000	1	72	28,000	90,000	215,000									
Gas Works.....	3	289	20	108,200	230,000	1	16	3	3,560	32,000	35,800									
Glass Works.....	3	39	82	25,600	108,670									
Glove and Mitt Makers.....	4	27	3,700	31,650	3	16	2	3,670	12,300	25,600									
Glue Making.....	5	56	2	18,400	117,640	4	23	2	8,940	22,600	45,400									
Gold and Silversmiths.....	2	154	175	154,612	679,500	1	120	250	70,245	310,513	431,415									
India Rubber Factories.....	4	110	32,918	142,000									
Iron Smelting & Steel making	3	35	8	15,400	46,000									
Lamps and Chandellers.....	3	41	12,300	36,000	1	17	6,000	2,920	10,920									
Last Factory.....	3	41	12,300	36,000	1	17	6,000	2,920	10,920									
Lime Kilns.....	2	22	7,200	65,650	1	20	3,200	3,850	15,000									

NOTES TO THE FOREGOING STATEMENTS.

TABLES I., II. AND III.—CAPITAL, AREA, POPULATION.

The summaries of Capital Invested and Values of Products, in Table I, are compared with relation to the four older Provinces,—the increases respectively being 103·6 and 35·2 per cent.

The area of the Dominion may be summarized thus:—

Prince Edward Island.....	2,133 sq. miles.
Nova Scotia.....	20,907 “
New Brunswick.....	27,174 “
Quebec.....	188,688 “
Ontario.....	101,733 “
Manitoba.....	123,200 “
British Columbia.....	341,305 “
The Territories.....	2,665,252 “
<hr style="width: 20%; margin: 0 auto;"/>	
Total sq. miles.....	3,470,392

“It is to be observed that the areas of the great waters, such as the great lakes and rivers of the Upper Provinces and the St. Lawrence, the bays and inlets of the Lower Provinces, are not included in the above table of square miles, these being compiled from the census districts established with a view of apportioning population to specific areas of land. The areas of these waters, as nearly as they can be estimated from measurement on the maps, would be about 140,000 square miles, which, added to the areas taken from the census districts, would give a total of over 3,610,000 square miles.

“The area of the whole of the continent of Europe is 3,900,000 square miles; the area of the United States, exclusive of Alaska, is 2,933,588 square miles—that of Alaska is 577,390 square miles—combined making 3,510,978 miles. Thus the Dominion is nearly six hundred thousand square miles larger than the United States without Alaska, and nearly 18,000 square miles larger than both combined.”

Rapid Increase of Immigration.

A glance at the figures in the last two columns of the following table,—copied from the report of the Hon. Minister of Agriculture,—will show how much greater an increase of population in Canada may probably be recorded in 1891, as contrasted with that of the Census of 1881 :

	1877.	1878.	1879.	1880.	1881.	1882.
Via the St. Lawrence.....	7,743	10,295	17,251	24,997	30,238	44,850
Via Suspension Bridge and In- land Ports.....	16,040	15,814	30,071	47,296	61,823	*90,393
Maritime Province Ports, in- cluding Portland (4,369), Halifax (8,723) and St. John direct (334.).....	2,749	2,488	3,955	3,309	3,836	13,426
British Columbia.....					5,715	†13,927
	23,532	28,597	51,277	75,602	101,612	162,596
Entered at Custom Houses with settlers' goods.....	11,753	11,435	9,775	10,248	15,404	30,554
Total.....	35,285	40,032	61,052	85,850	117,016	193,150

* NOTE.—It may be explained that this item of 90,393 is composed as follows:—Immigrants via Suspension Bridge, 64,480; from United States by St. Paul, Minneapolis and Manitoba Railway, 13,325; American arrivals at various agencies 2,064, along the frontier from Emerson to Fort Benton, 1,200; Americans entered at Coaticooke 900, and arrivals at Montreal via Boston 3,984, and via New York 4,440.

† Of these, 6,200 were Whites, and 7,727 were Chinese.

The immigration during the first six months of 1883 was largely in excess of that for the corresponding period of 1882.

Extent of Fertile Land in the Canadian North-West.

It may not be deemed an improper digression, to make brief reference here to the extent and fertility of the lands offered for settlement in the Canadian North-West.

There is good authority for the general statement, that the vast territory embraces 600,000 square miles of valuable agricultural land, well adapted for settlement and cultivation,—equal to 384,000,000 acres. It is a misnomer to call this a fertile “belt,” for the rich land, as will immediately be seen, does not lie in a single undivided region. It embraces large tracts of vegetable and grass lands; what may be called properly the Wheat Land, however, includes several areas, the aggregate of which is about 370,000 square miles, or 236,800,000 acres. The Red River prairie is large and exceedingly valuable. The fertile region in the Saskatchewan Valley, covers an area of 64,400 square miles, (or 41,216,000 acres,) in a continuous stretch of about 800 miles in length by 80 miles in width. But by far the greatest Wheat area is beyond the Saskatchewan, in the Valley of the Athabaska, and along the Peace River, westward to the Rocky Mountains, and as far North as the line of 60°. This stretch of country has an area of 470,000 square miles of good land, or about 300,000,000 acres. From the eastern boundary of the North-West to the foot of the Rocky Mountains, there is a gradual rise of 3,500 feet; affording, therefore, not only variety of soil, but appreciable differences of climate, the average temperature moderating as progress is made westward.

As an example of how many people such a country would sustain, take the following:—The population of Germany in 1871 was 42,726,844, spread over an area of 212,091 square miles,—the average being 201 persons to a square mile. To show the capacity of the most fertile part of the North-West to sustain in comfort, if not affluence, an industrious people, it has been computed that there would be plenty of room within the 600,000 square miles first-mentioned for over 120,000,000 inhabitants,—that number being nearly equal to the combined populations of Germany, France, Italy, and Spain, in the year 1871. The area of the United Kingdom is only equal to about one-fifth of these fertile lands; while the extents of Germany and France are, respectively, but little more than one-third.

But a different illustration can be presented, which may probably be more readily comprehended by the people of Canada and the United States. The area of the State of New York is 47,000 square miles; the area of Texas is 274,356 square miles, or nearly six times as great as the “Empire State.” Twelve Provinces, each equal in area to New York, might easily be carved out of the fertile region of the Canadian North-West. Texas has not half the area of the latter region;—the combined areas of the States of Texas, Oregon, Minnesota, Kansas, and Missouri, amount only to 601,402 square miles; while the five largest Territories of the Union—Dakota, Montana, Wyoming, Idaho, and Utah, have but an aggregate area of 563,361 square miles.

TABLES IV. AND V.—MOVABLE AND IMMOVABLE PROPERTY.

The statements in these Tables, relating to all kinds of Property, movable and immovable, including Shipping, &c., are interesting; but a comparative analysis would occupy more space than can be afforded here.

TABLE VI.—WORKING ANIMALS, FARM STOCK, AND ANIMAL PRODUCTS.

Comparative Summary of Live Stock, &c., owned in the older Provinces.

		1881.	1871
Horses.....	{ Nova Scotia	46,044	41,925
	{ New Brunswick	43,957	36,322
	{ Quebec	225,006	196,339
	{ Ontario	473,906	368,585
Colts and Fillies	{ Nova Scotia	11,123	7,654
	{ New Brunswick	9,018	8,464
	{ Quebec	48,846	57,038
	{ Ontario	116,392	120,416

		1881.	1871.
Working Oxen	{ Nova Scotia	33,275	32,214
	{ New Brunswick	8,812	11,132
	{ Quebec	49,237	48,348
	{ Ontario	23,263	47,941
Milch Cows...	{ Nova Scotia	137,639	122,688
	{ New Brunswick	103,965	83,220
	{ Quebec	490,977	406,542
	{ Ontario	782,243	638,759
Other Horned Cattle.	{ Nova Scotia	154,689	119,065
	{ New Brunswick	99,788	69,335
	{ Quebec	490,119	328,572
	{ Ontario	896,661	716,474
Sheep	{ Nova Scotia	377,801	398,377
	{ New Brunswick	221,163	234,418
	{ Quebec	889,833	1,007,800
	{ Ontario	1,359,178	1,514,914
Swine	{ Nova Scotia	47,256	54,162
	{ New Brunswick	53,087	65,805
	{ Quebec	329,199	371,452
	{ Ontario	700,922	874,664
Cattle Killed or Sold.	{ Nova Scotia	63,389	42,815
	{ New Brunswick	35,414	31,551
	{ Quebec	160,207	155,373
	{ Ontario	363,043	277,986
Wool	{ Nova Scotia	1,142,440	1,132,703
	{ New Brunswick	760,531	796,168
	{ Quebec	2,730,546	2,763,304
	{ Ontario	6,013,216	6,211,305

TABLE VII.—YIELDS OF THE VARIOUS CEREAL CROPS.

Comparative Summary of Cereal Products in the older Provinces.

		1881.	1871.
Spring Wheat. (bush.)	{ Nova Scotia	522,602	224,410
	{ New Brunswick	517,917	203,592
	{ Quebec	1,999,815	2,035,921
	{ Ontario	7,213,024	7,891,989
Fall Wheat... (bush.)	{ Nova Scotia	6,649	3,087
	{ New Brunswick	3,959	1,319
	{ Quebec	19,189	22,155
	{ Ontario	20,193,067	6,341,400
Barley	{ Nova Scotia	228,748	296,050
	{ New Brunswick	84,183	70,547
	{ Quebec	1,751,539	1,668,208
	{ Ontario	14,279,841	9,461,233
Peas and Beans (bush.)	{ Nova Scotia	37,220	35,203
	{ New Brunswick	43,121	45,056
	{ Quebec	4,170,456	2,284,635
	{ Ontario	9,434,872	7,761,470

	1881.	1871.	
Oats..... (bush.)	Nova Scotia	1,873,113	2,190,099
	New Brunswick	3,297,534	3,044,134
	Quebec	19,990,205	15,116,262
	Ontario	40,209,929	22,138,958
Rye	Nova Scotia	47,567	33,987
	New Brunswick	18,268	23,792
	Quebec	430,242	458,970
	Ontario	1,598,871	547,600
Corn..... (bush.)	Nova Scotia	13,532	23,349
	New Brunswick	18,159	27,658
	Quebec	888,169	603,356
	Ontario	8,096,782	3,148,456
Potatoes	Nova Scotia	7,378,387	5,560,975
	New Brunswick	6,961,016	6,562,355
	Quebec	14,873,287	18,068,323
	Ontario	18,893,996	17,138,534
Hay	Nova Scotia	597,731	442,732
	New Brunswick	414,046	344,793
	Quebec	1,164,906	1,225,640
	Ontario	2,038,659	1,804,476

Farmers and others interested in the grain trade will scan these comparisons with a good deal of interest. The aggregate of Wheat production in the Dominion seems to corroborate hypothetical statements made in some former years by the Secretary in his Montreal Trade Reports; it must, however, be said that a summary of Wheat production in the Province of Ontario, published in the Annual Report of the *Ontario Bureau of Industries*, for the year 1882, shows the combined yield of Winter and Spring Wheat to have been far greater than the yield for the whole Dominion, as given in the Census. This important statement is as follows:—

ARTICLES.	Breadth Sown.	Production.	Yield per Acre.
Fall Wheat	1,188,520 acres.	31,255,202 bush.	26·3 bshls.
Spring Wheat	586,817 "	9,165,999 "	16·5 "
Barley	848,617 "	24,284,407 "	28·6 "
Oats	1,375,415 "	59,097,997 "	36·4 "
Rye	189,031 "	3,549,898 "	18·8 "
Peas	557,157 "	10,943,355 "	19·6 "
Corn	206,924 "	13,420,984 "	64·9 "
Buckwheat.....	49,586 "	1,247,943 "	25·2 "
Beans	19,787 "	409,910 "	20·7 "
Flax	6,157 "
Hops	2,051 "
Tobacco	51 "
Hay and Clover	1,825,890 "	2,090,626 tons.	1·14 tons
Potatoes	160,700 "	18,432,145 bush.	115·0 bshls.
Mangold Wurzels	15,791 "	7,711,420 "	488·0 "
Carrots	9,955 "	4,009,975 "	403·0 "
Turnips	78,823 "	35,359,331 "	448·0 "

The cereal yield per acre for the Province of Ontario, as shown here, affords an opportunity for quoting figures relating to the productiveness of Manitoba and the Canadian North-West:—

	1877.	1878.	1879.	1880.	1881.
	Bushels.	Bushels.	Bushels.	Bushels.	Bushels.
Average yield of Wheat, per acre.....	26 $\frac{3}{4}$	26 $\frac{3}{8}$	26 $\frac{3}{4}$	29 $\frac{1}{2}$	30
“ “ Peas, “	32	34	32 $\frac{1}{2}$	38 $\frac{1}{2}$	34
“ “ Barley, “	40 $\frac{3}{4}$	63	37 $\frac{3}{8}$	41	40
“ “ Oats, “	59 $\frac{3}{4}$	59 $\frac{3}{4}$	58	57 $\frac{3}{4}$	57
“ “ Rye, “	30	30	40	40
“ “ Potatoes, “	304	308	302	318	330

The averages for 1881 are taken from the Report of the Minister of Agriculture for the Province of Manitoba; those for the preceding years being derived from unofficial but reliable sources. For instance, the averages for Wheat were obtained from 124 statements; for Peas, from 21 statements; for Barley, from 101 statements; for Oats, from 115 statements; for Rye, 1 statement; and for Potatoes, 92 statements.

The following comparative figures show the yield per acre of certain kinds of Grain in the Canadian North-West, and the Western and North-Western States:—

	WHEAT.	BARLEY.	OATS.
	Bushels per acre.	Bushels per acre.	Bushels per acre.
Canadian North-West.....	28	40	57
Minnesota.....	17	25	37
Wisconsin.....	13	20	..
Iowa.....	10	22	28
Illinois.....	8	17	..
Indiana.....	..	19	..
Ohio.....	10	19	23

While these figures are not quoted as from a strictly official source, the statement which follows is valuable, as having been taken from a “*Statistical Abstract of the United States*,” published by the Government, at Washington, D. C. The period to which it refers consists of ten years, from 1870 to 1879 inclusive,—and the particulars given are, the average annual yield per acre, also the highest and lowest yields, with the years in which they occurred:—

	AVERAGE OF 10 YEARS.	HIGHEST YIELD.	LOWEST YIELD.
	Bushels per acre.	Bushels per acre.	Bushels per acre.
Wheat	12-04	13-09 in 1877	11-00 in 1875
Indian Corn	27-01	30-07 in 1872	20-07 in 1874
Rye	14-01	16-00 in 1878	13-00 in 1875
Barley	22-00	24-00 in 1879	19-02 in 1872
Oats	28-04	31-07 in 1877	22-00 in 1874
Potatoes	87-07	110-05 in 1875	69-09 in 1878

TABLE VIII.—SOME HOME-MADE AND FARM PRODUCTS.

In giving the following comparisons, let it be borne in mind that the figures for 1871 relate to the four older Provinces.

	1881.	1871.
Home-made Butter	lbs. 102,545,169	74,190,584
Home-made Cheese	lbs. 3,184,996	4,984,843
Flaxseed	bush. 108,694	118,044
Flax and Hemp	lbs. 2,056,353	2,584,765
Home-made Cloth	yds. 7,040,259	7,641,917
Home-made Linen	yds. 1,293,802	1,771,140
Apples	bush. 13,377,655	6,365,315
Grapes	lbs. 3,896,508	1,126,402
Other Fruits	bush. 841,219	358,963
Maple Sugar	lbs. 20,556,049	17,276,054
Tobacco	lbs. 2,527,962	1,595,932
Hops	lbs. 905,207	1,711,789
Furs	value \$987,555	\$738,038

Particulars relating to Butter and Cheese Factories will be found in the Table on page 21. The record would have been more intelligible had the products been given in weight (lbs.) instead of value. There were 46 Butter Factories in 1881,—in 1871, *nil*. Cheese Factories in 1881, 409,—in 1871, 353.

There is no statement about Eggs or Poultry, although these have, for a number of years, been exported to the United States in very large quantities.

TABLE IX.—PRODUCTS OF THE FOREST.

A carefully prepared section on the Lumber Trade of the Ottawa Valley is given on a subsequent page, to which the reader is referred for valuable information.

TABLE X.—THE FISHERIES OF CANADA.

The Census statements as to Fish products are, properly, confined to quantities. The subjoined table, from a report of the Marine and Fisheries Department, gives values by Provinces for 1880, 1881, and 1882 :—

PROVINCES.	VALUES.		
	1880.	1881.	1882.
Nova Scotia	\$ 6,291,061.46	\$ 6,214,781.50	\$ 7,131,418.36
New Brunswick	2,744,446.58	2,930,904.58	3,192,338.85
Quebec	2,631,556.45	2,751,962.50	1,976,515.81
Prince Edward Island	1,675,088.90	1,955,289.80	1,855,687.25
British Columbia	713,335.32	1,454,321.26	1,842,675.05
Ontario	444,491.00	509,903.00	825,457.02
Totals	14,499,979.71	15,817,162.64	16,824,092.34
Increases		1,317,182.93	1,006,929.70

The quantities of Fish-fry distributed from the fish-breeding establishments in the Dominion, in the Spring of 1882, are reported to have been—

Salmon	5,783,000
Salmon-Trout	2,277,000
California Salmon	471,000
Speckled Trout	40,000
Pickeral	26,500,000
White-Fish	20,728,000
Total.....	55,799,000

TABLE XI.—EXTENT OF MINING INDUSTRIES.

Some of the statements in this Table can be tested by the Report of the Department of Mines for Nova Scotia. For instance, the yield of Gold from the mines in that Province, according to the Census, was 15,167 ounces; but according to the Report, the annual yield for a decade was as follows :—

1873.....	oz. dwt. gr.	11,852	7	19	1878.....	oz. dwt. gr.	12,577	1	22
1874.....	9,140	13	9	1879.....	13,801	8	10		
1875.....	11,208	14	9	1880.....	13,234	0	4		
1876.....	12,038	13	18	1881.....	10,756	13	2		
1877.....	16,882	6	1	1882.....	14,107	3	20		

As regards the production of Coal in Nova Scotia, the Census sets down the quantity at 1,013,345 tons, which is 19,365 tons less than the official statement for 1880, as given below. The Report of the Department furnishes the following figures, showing the production and sales for the past four years:—

	Production.	Sales.
1879.....	788,271 tons.	688,624 tons.
1880.....	1,032,710 "	954,659 "
1881.....	1,124,270 "	1,035,014 "
1882.....	1,365,811 "	1,250,179 "

For additional information relative to the Coal Trade, see the section on that subject on a subsequent page.

TABLES XII. AND XIII.—MANUFACTURING INDUSTRIES.

The Census Tables of Industries have been subjects of severe comment; and, doubtless, many of the more important statements, in the aggregate as well as detail, can hardly be reconciled; but the discrepancies should not be all attributed to the census-takers. The following comparative summary relating to the Industries of the Dominion may nevertheless be useful:—

	1881	1871
Amount of Capital invested	\$165,302,623.00	\$77,964,020.00
Value of Raw Material used	179,918,593.00	124,907,846.00
Aggregate Value of Productions	309,676,068.00	221,617,773.00
Number of Persons employed.....	254,935	187,942
Aggregate Wages paid.....	59,429,002.00	40,851,009.00
Average Wages for each person.....	233.11	217.36

It need hardly be stated that men, women, and children are included among the "persons employed."

COTTON MANUFACTURING INDUSTRY.

The figures for the Dominion, and for Montreal, according to the enumerations of 1881 and 1871, have been placed side by side with some care, and, therefore, can easily be compared. It appears that there were 19 Cotton Factories in the Dominion at the time of census-taking,—the capital invested amounting to \$3,476,500, with 3,527 hands employed, and the value of productions being \$3,759,412. The following statements regarding Cotton Factories are collated from reliable information for 1883,—the gross Capital invested amounting to \$8,850,000, and the estimated product of the single item Cloth being equal to about 115,000,000 yards. The other lines of production during 1883 will be:—Brown Sheetings and Shirtings, Bleached and Fancy Shirtings,

Apron Checks, Nun's Stripes, Denims, Ticks, Ducks, Cottonades, Crochet and Knitting Cottons, Beam Warps for Woollen Mills, 8-4, 9-4, and 10-4 Brown Sheetings, Drills, Bags, Wadding and Batting, Cheviots, Canton Flannels, Shoe Ducks and Drills, Pocketings, Wigans, &c. The computed value of *total* production of the Mills in the following table, is \$10,400,000 for the year :—

NAME OF FACTORY.	LOCATION.	No. of Looms.	No. of Spindles.	Tons of Coal used.
Canada	Cornwall, Ont.....	1,000	45,000	6,000
Stormont	Cornwall, Ont.....	550	26,000	2,500
Kingston	Kingston, Ont.....	300	14,000	3,000
Dundas	Dundas, Ont.....	450	20,500	4,000
Hamilton	Hamilton, Ont.....	250	12,000	2,500
Ontario	Hamilton, Ont.....	250	11,500	2,500
Lybster	Merriton, Ont.....	300	14,000	1,500
Thorold	Thorold, Ont.....	300	14,000	1,000
Craven	Brantford, Ont.....	300	14,000	1,000
V. Hudon	Hochelaga, Que.....	1,400	65,000	12,000
St. Anne	Hochelaga, Que.....	480	21,600	4,000
Merchants	St. Henri, Que.....	550	24,750	5,000
Valleyfield	Valleyfield, Que.....	1,400	60,000	3,000
Chamby	Chamby, Que.....	150	6,750	500
Coaticook	Coaticook, Que.....	250	10,000	1,000
St. Croix	St. Stephen, N. B.....	750	34,000	3,000
St. John	St. John, N. B.....	400	18,000	5,000
Wm. Parks & Son	St. John, N. B.....	150	6,750	3,000
Nova Scotia	Halifax, N. S.....	500	22,500	5,000
Moncton	Moncton, N. B.....	200	10,000	2,000
Windsor	Windsor N. S.....	250	12,000	2,500

Bleaching and Calico-printing, on a very considerable scale, have been introduced by some of the Cotton Companies.

The consumption of Coal is a most important item.

In the Annual Report of the "Trade and Commerce of Montreal, for 1879," valuable special information given to the Secretary enabled him to make approximate statements relating to seven of the Cotton Mills then in operation. For the present occasion he is favored, from the same sources, with figures for all the Mills particularized in the preceding Table, which will be found summarised below. The two statements are placed side by side, as affording indications of progress in the Cotton Manufacturing Industry:—

	Seven Mills in 1879.	Twenty Mills in 1883.
Total Capital employed	\$ 2,100,000	\$8,500,000
Aggregate quantity of Raw Material used per annum, lbs.	12,800,000	38,470,000
Quantity of Cloth produced	38,000,000 yds.	115,000,000
Approximate value of annual production	\$ 3,745,000	10,400,000
No. of Spindles	134,000	472,000
No. of Looms	2,940	9,950
No. of Employees	2,265	10,200
Amount of Wages paid per annum	\$ 556,000	\$ 1,110,000
Value of Fuel consumed	\$ 45,000	215,000
Value of Chemicals	\$ 20,000	125,000

WOOLLEN MANUFACTURING INDUSTRY.

As regards the manufacturing of Woollens in the Dominion, the following figures appear in the census-volume:—

	Number.	Capital.	Emploves.	Production.
Carding and Fulling Mills.....	439	\$580,417	901	\$1,498,343
Hosiery Manufactories.....	83	630,821	1,556	1,385,730
Woollen Cloth Making.....	1,281	5,272,376	6,877	8,113,055

Quite a large number of the concerns mentioned in this summary are of the very smallest kind (as, indeed, are many in the general lists of industries), and unfortunately afford no intelligible indication of the business value of the statements. While examining the industrial details relating to Cottons and Woollens, however, the Secretary had a trade-list and other information before him, which contained the names and locations of 294 Woollen Factories in the Provinces of Ontario and Quebec. Of the number (257) in Ontario, there were:—

113 Mills, each having 1 set of cards.	4 Mills, each having 5 sets of cards,
32 Mills, " 2 sets "	3 Mills, " 6 sets "
8 Mills, " 3 sets "	2 Mills, " 8 sets "
6 Mills, " 4 sets "	1 Mill, " 15 sets "

Of the number (37) in Quebec, there were:—

8 Mills, each having 1 set of cards.	2 Mills, each having 5 sets of cards.
6 Mills, " 2 sets "	1 Mill, " 6 sets "
2 Mills, " 3 sets "	1 Mill, " 10 sets "
1 Mill, " 4 sets "	1 Mill, " 20 sets "

The trades list above referred to also furnished the following information as to certain of the Factories producing particular lines of goods during the years 1882 and 1878, viz.:—

Woollen Factories in the Province of Ontario.

	1882.	1878.
All-Wool Tweeds.....	1	..
Blankets.....	4	1
Blankets and Yarn	1	..
Cardigan Jackets.....	1	..
Carpets	3	2
Cassimeres, Doeskins, &c.	1
Etoffes	3	1
Fancy Tweeds	7	7
Fancy Tweeds and Blankets	1	1
Felt.....	1	..
Felt Hats.....	2	1
Fine Tweeds and Worsted Goods	1	1
Flannels.....	4	1
Flannels, Etoffes, &c.	1	..

	1882.	1878.
Flannels and Yarns.....	1	..
Hosiery.....	2	1
Knit Goods.....	22	9
Shirts, Drawers, Hosiery, and Yarns.....	1	..
Shirts, Drawers, and Yarn.....	2	2
Shoddy.....	3	3
Shoddy, Waste, Flocks, Presidents, Knaps & Blankets	1	1
Tweeds.....	37	35
Tweeds, Blankets, and Flannels.....	1	..
Tweeds and Carpets.....	1	1
Tweeds and Check Flannels.....	1	1
Tweeds and Etoffes.....	3	3
Tweeds and Flannels.....	7	7
Tweeds and Heavy Woollens.....	1	1
Tweeds, Knit Goods, and Fancy Flannels.....	1	1
Tweeds and Shawls.....	1	..
Tweeds and Shoddy.....	..	1
Tweeds and Yarn.....	2	1
Woollen and Worsted Yarn.....	1	..
Yarns.....	1	..
Yarns and Knit Goods.....	1	1
Yarns, Tweeds, and Flannels.....	1	..

Woollen Factories in the Province of Quebec.

	1882.	1878.
Blankets.....	1	..
Blankets and Flannels.....	..	1
Cassimeres, Tweeds, and Flannels.....	1	..
Fancy Flannels.....	1	1
Fancy Hosiery.....	1	..
Fancy Tweeds.....	1	1
Flannels.....	2	2
Heavy Tweeds and Gray Goods.....	1	1
Hosiery and Underwear.....	1	..
Knit Goods.....	3	..
Shirts and Drawers.....	1	2
Tweeds.....	8	4
Tweeds, Blankets, Union Beavers, &c.....	1	1
Tweeds and Etoffes.....	..	1
Tweeds and Flannels.....	1	1
Tweeds and Heavy Woollens.....	1	1
Tweeds and Yarns.....	1	1
Waterproof Cloth.....	1	1
Worsted Yarns, Italian Cloths, Lustres, Cashmeres, and Winceys.....	1	..

Special Summary Relating to Woollens.

The following is a summary of detailed information specially furnished relating to ten in 1879, and eleven in 1883, of the larger Woollen Factories included in the foregoing enumerations:—

	1879.	1883.
Capital employed	\$1,644,000	\$2,388,000
Sets of Cards in use..... No.	60	72
Wool used per annum	lbs. 3,212,000	4,079,250
Quantity of Cloth produced	yds. 1,995,000	2,593,500
Blankets.....	pairs. 30,000	39,000
Value of one year's production	\$1,571,300	\$ 2,042,740
Chemicals and Dyes	\$ 160,000	\$ 210,000
Number of Looms	345	391
Employees	1,306	1,697
Aggregate Wages per annum	\$ 297,400	\$ 386,600
Goods manufactured :—Tweeds, Cassimeres, Etoffes, Flannels, Blankets, Serges, Beaver, Presidents, Diagonal and Nap Coatings, Shoe Cloth.		

[NOTE.—The number of Looms in 1879 included 102 broad and 243 narrow ; in 1883 the numbers were 122 broad and 269 narrow.]

Some interesting particulars relating to SUGAR REFINING are given on subsequent pages, under the head of the SUGAR TRADE, and in the MONTREAL REPORT under the caption SUGAR REFINERIES. A number of note-worthy statements that might also have been given here, relating to PAPER MILLS, TOBACCO FACTORIES, TANNERIES, SEWING MACHINE MAKING, and other INDUSTRIES, are reserved for the MONTREAL TRADE REPORT, which will be issued shortly.

CLIMATOLOGY OF CANADA.

NOTE.—At the request of W. C. MURKIN, Esq., Imperial German Consul in Montreal, I prepared, not long since, a document containing a great variety of statements concerning Canada and the North-West, for the information of the Government at Berlin. Nearly the whole of the section on Climate is repeated here. The statements in the several Tables are by the best authorities.—*W. J. P.*

A CURRENT FALLACY.

It has been trenchantly said that the climate of Canada is an "exaggeration;" that is, it is either supertropical or hyperborean, reminding humanity in Summer of the Equator, and in Winter of the Poles,—without any intermediate alleviation. A greater fallacy could hardly obtain credence. Standard thermometers show that the Summer *means* are not excessively high, nor those of Winter unbearably low; though, of course, there are sometimes indications over 90° Fahr. in the shade, and occasional registrations 15° to 25° below zero. On the whole, the climate of the Dominion may fairly be said to be unsurpassed for healthfulness. Without epidemics of any kind, the rate of mortality is lower than that of the United States. While it is fortunate that there are data upon which to rely to substantiate these statements, it is very unfortunate that they should be so generally overlooked or ignored.

TEMPERATURE, SNOW AND RAIN-FALL.

It is most satisfactory to be able to submit the results of careful scientific observations, which will be found embodied in a very comprehensive series of Tables given on pp. 43, 44 and 45. Charles Carpmael, Esq., Superintendent of the Meteorological Service of Canada, has, in the kindest manner, supplied from his office at Toronto, Ont., a number of exceedingly valuable documents relating to the Meteorology of Canada, covering a period of over forty years. The Tables referred to show the highest, lowest, and mean monthly and yearly temperatures, embracing observations made regularly at many prominent places throughout the Dominion;—also, the snow and rain-falls, giving the number of days per

Averages of the Lowest Temperature in each Month and Year for various places in the Dominion of Canada from three or more years.

	Jan.	Feb.	Mar.	April.	May.	June.	July.	Aug.	Sept.	Oct.	Nov.	Dec.	Year.
ONTARIO.													
Toronto	7.1	7.4	2.4	19.2	30.6	33.3	46.4	44.4	34.3	24.9	14.8	2.7	12.1
Goderich	1.3	1.1	2.1	21.6	28.4	39.1	46.4	44.5	36.3	28.8	13.9	2.9	8.8
Woodstock	7.6	13.0	5.2	22.2	28.5	36.0	42.2	44.1	29.6	20.2	1.1	15.5	18.2
Peterborough	20.7	15.6	11.1	16.3	27.1	36.7	43.2	36.7	28.2	16.3	1.0	22.8	25.9
Pembroke	32.7	26.6	23.2	11.0	26.8	36.1	44.4	37.8	30.0	20.3	0.0	26.8	37.3
QUEBEC.													
Montreal	18.2	12.2	9.5	27.4	37.2	49.7	53.4	52.0	41.2	28.9	3.5	12.3	17.2
Quebec	20.3	17.8	8.9	17.5	30.9	42.2	46.6	45.5	36.4	25.6	3.4	16.8	23.5
NEW BRUNSWICK.													
St. John	11.0	6.4	1.2	20.2	31.8	43.0	49.0	48.4	41.0	25.0	12.8	5.8	10.6
Bass River	20.2	15.2	3.4	17.4	25.4	40.0	47.8	41.6	33.7	20.0	7.0	12.5	22.6
NOVA SCOTIA.													
Halifax	6.2	3.0	0.7	19.8	25.8	37.6	50.2	44.3	36.5	25.7	16.7	1.9	8.8
Sydney	6.3	5.3	4.3	14.7	25.0	32.3	38.3	41.4	33.6	24.7	19.7	5.1	9.8
PRINCE EDWARD ISLAND.													
Charlottetown	15.0	15.7	2.0	14.7	27.7	36.6	44.9	45.1	39.4	32.2	13.7	8.7	16.5
MANITOBA.													
Winnipeg	35.9	33.2	29.3	1.0	25.4	38.1	41.2	40.4	26.1	8.1	28.8	34.2	38.6
BRITISH COLUMBIA.													
Spence's Bridge	7.7	5.3	16.5	31.7	39.4	47.0	53.0	49.7	36.3	27.0	2.3	2.7	16.7

Monthly and Annual Rain-fall in Inches for various places in the Dominion of Canada from three or more years.

	Jan.	Feb.	Mar.	April.	May.	June.	July.	Aug.	Sept.	Oct.	Nov.	Dec.	Year.
Toronto	1.23	0.89	1.62	2.44	3.25	2.98	3.25	3.02	3.72	2.39	2.98	1.65	29.42
Goderich	0.66	0.55	1.39	1.81	3.38	2.39	2.94	2.78	3.28	2.46	1.44	0.84	23.92
Woodstock	0.59	0.58	1.31	1.60	3.04	2.45	2.96	4.41	2.93	2.64	0.95	0.82	24.28
Peterborough	0.64	0.36	1.01	1.89	1.96	2.03	2.45	2.60	3.22	2.93	1.81	0.65	20.55
Pembroke	0.15	0.15	0.56	1.33	3.06	2.28	2.51	2.36	3.21	2.58	1.09	0.21	19.49
Montreal	0.04	0.42	1.41	1.30	2.26	3.01	2.26	3.62	3.9	3.75	2.66	0.85	27.26
Quebec	0.25	0.09	0.42	1.17	2.52	1.11	2.52	4.27	2.81	2.89	0.95	0.00	19.26
St. John	2.13	2.86	2.23	3.14	4.51	3.00	3.45	3.89	4.38	4.68	5.33	2.67	33.27
Bass River	1.39	0.61	0.92	2.13	2.83	3.30	2.53	3.77	2.58	4.88	3.78	1.15	29.78
Halifax	3.66	3.69	2.91	3.10	4.17	3.04	2.37	3.61	3.69	5.02	4.68	3.44	43.08
Sydney	3.49	3.16	2.20	4.03	3.46	3.16	3.42	5.07	5.48	5.04	6.88	4.03	49.42
Charlottetown	2.27	0.68	1.12	0.97	2.44	3.79	2.92	3.48	3.94	4.62	2.46	1.06	29.75
Winnipeg	0.00	0.00	0.33	0.80	2.72	3.84	2.75	2.12	3.73	0.54	0.00	0.00	16.83
Spence's Bridge	0.08	0.19	0.00	0.21	0.78	0.81	0.25	0.47	0.32	0.20	0.37	0.20	3.88

Average Fall of Snow in the several Provinces of the Dominion of Canada, with the number of Days' Snow, and number of Days' Rain.

	Depth of Snow in inches.									Total Snow in Season.	No. of Days' Snow.	No. of Days' Rain.
	Sept.	Oct.	Nov.	Dec.	Jan.	Feb.	Mar.	April.	May.			
Ontario	2.2	13.5	20.1	25.1	14.9	19.9	2.2	8	95.9	58	89
Quebec	2.0	13.9	23.2	31.8	16.4	17.5	8.8	1.4	115.0	60	94
New Brunswick	1.3	10.1	31.9	19.2	19.6	15.3	10.2	0.8	108.4	58	107
Nova Scotia	0.8	4.0	21.9	17.6	18.9	11.8	13.3	1.1	92.4	52	117
Prince Edward Island	12.5	23.9	15.6	22.1	17.6	17.2	0.5	112.4	78	129
Manitoba	3.1	4.8	11.6	8.9	7.4	13.4	9.7	3.6	0.0	82.5	59	62
British Columbia	6.0	8.7	10.0	5.5	3.3	8	0.0	33.5	27	66

TEMPERATURE, HUMIDITY, AND PRECIPITATION, AT MONTREAL, CANADA.

From the Record of the McGill College Observatory.—C. H. MOLSON, Superintendent.

MONTH.	MEAN TEMPERATURE.										MAXIMUM TEMPERATURE.					MINIMUM TEMPERATURE.					RELATIVE HUMIDITY. (Saturation 100.)									
	1861	1875	1876	1877	1878	1879	1880	Mean of Month.	1875	1876	1877	1878	1879	1880	Mean of Month.	1875	1876	1877	1878	1879	1880	Mean of Month.	1875	1876	1877	1878	1879	1880		
Jan	13.1	10.4	5.4	17.7	9.1	18.1	12.7	22.4	13.5	29.5	54.0	40.2	41.9	35.9	43.8	40.9	-13.2	-6.5	-20.9	-17.8	-15.4	-9.5	-13.9	81	78	70	81	82	78	70.8
Feb	15.7	18.2	9.0	14.6	26.6	22.1	10.9	19.9	17.2	43.4	41.2	48.2	45.0	37.3	51.2	44.4	-24.0	-15.4	* 2.1	- 2.0	-14.5	-17.5	-11.9	78	77	78	72	75	74	75.7
March . . .	30.5	21.5	11.6	24.6	25.1	31.7	25.0	23.1	25.0	41.0	52.0	46.0	52.0	40.2	40.6	48.3	-10.8	- 3.6	- 7.7	* 0.1	- 5.4	-11.2	- 6.3	76	77	70	72	82	69	75.3
April	40.3	39.9	15.7	33.4	43.7	48.1	33.9	39.6	40.5	61.3	55.2	74.3	73.0	65.8	63.4	65.5	11.4	17.0	19.0	31.3	* 8.5	10.2	16.2	67	68	62	70	62	60	67.8
May	59.8	57.9	53.1	50.8	55.0	55.4	57.1	53.6	55.1	82.2	80.5	79.0	75.0	65.6	63.2	81.4	30.0	30.8	32.2	34.6	33.1	22.9	30.6	69	70	60	70	62	64	65.8
June	68.1	65.8	64.6	67.3	65.7	68.7	62.2	66.5	60.5	84.4	85.0	85.0	90.7	87.1	80.1	80.4	39.8	48.0	40.1	40.0	38.2	48.8	44.0	72	73	67	64	74	67	69.5
July	66.5	67.7	67.8	70.7	70.0	72.6	68.0	69.3	69.8	80.2	87.6	88.5	91.8	83.1	80.2	86.7	49.5	49.9	55.0	54.2	51.0	52.7	52.2	75	73	68	62	71	67	69.3
August . . .	69.3	66.8	63.8	70.1	69.2	68.7	65.2	66.9	63.1	87.0	92.2	88.0	82.0	85.2	80.2	86.8	51.0	48.4	55.9	54.1	47.0	44.8	50.2	77	69	76	75	70	68	72.5
Sept.	56.4	53.1	55.2	66.0	61.8	62.6	63.8	60.3	59.1	86.8	81.7	84.3	84.0	81.4	85.0	83.9	34.1	40.5	42.0	40.3	33.1	40.3	33.4	70	81	71	75	74	74	75.2
October . . .	45.5	46.6	40.0	49.4	42.6	45.2	50.9	46.7	46.6	53.0	67.8	70.3	74.2	80.0	77.1	72.7	20.9	24.7	22.9	27.8	22.0	24.8	24.8	80	79	78	73	71	78	77.3
Nov.	37.6	33.6	25.5	134.1	35.9	33.1	31.5	20.1	31.5	41.0	54.0	62.3	45.4	59.5	59.0	51.9	-17.9	7.7	18.5	18.5	9.2	2.2	5.2	80	83	84	82	79	79	81.2
Dec.	18.2	20.6	16.7	12.7	27.3	21.3	15.8	16.7	18.3	54.0	33.0	44.1	47.3	47.4	40.0	45.2	-22.5	-21.8	7.3	- 1.2	-25.2	- 8.6	-12.0	84	82	82	80	80	82	81.7
Yearly Means	43.4	42.3	33.7	41.6	44.7	45.3	41.5	43.3	42.47	62.4	65.8	67.4	66.9	66.5	67.8	66.1	2.0	18.3	23.0	23.3	14.6	10.6	18.1	76.4	76.9	78.4	74.2	73.5	72.5	74.3

MONTH.	RAIN-FALL IN INCHES.						SNOWFALL IN INCHES.						RAIN AND SNOW MELTED IN INCHES.															
	1860	1861	1875	1876	1877	1878	1879	1880	Mean of Six Years.	1860	1861	1875	1876	1877	1878	1879	1880	Mean of Six Years.										
	Jan	0.47	0.10	0.00	1.87	0.12	0.40	0.00	1.27	0.61	11.9	31.9	85.0	27.4	23.3	30.5	30.5	10.3	23.7	1.66	3.23	3.50	4.61	2.33	3.85	4.08	3.03	3.48
Feb	0.62	0.76	0.42	1.12	0.34	0.23	0.03	1.14	0.55	15.6	27.0	12.9	27.5	3.6	10.2	27.4	28.0	17.9	2.18	8.55	1.71	3.87	0.70	1.28	2.82	3.74	2.35	
Mar	0.38	1.70	0.80	0.74	2.73	0.68	1.23	0.04	1.02	4.1	3.3	14.6	45.6	22.4	10.4	32.6	25.1	26.6	0.70	2.59	2.20	5.30	5.04	2.41	4.57	2.55	3.69	
Apr	1.73	2.92	1.18	1.03	1.93	3.55	0.27	3.17	1.86	2.4	11.7	7.3	12.0	10.2	2.3	6.9	8.6	7.9	1.97	4.09	1.91	2.23	3.00	3.78	0.96	4.08	2.65	
May	4.31	8.64	5.13	3.45	0.62	4.11	0.80	2.97	2.85	0.7	0.0	0.0	0.3	0.0	1.0	0.0	0.0	0.2	4.38	8.04	5.13	3.48	0.02	4.21	0.80	2.97	2.87	
June	2.85	4.87	3.26	3.21	2.35	1.18	4.82	3.27	3.01										2.85	4.87	3.26	3.21	2.35	1.18	4.82	3.27	3.02	
July	5.73	10.19	3.64	4.33	3.05	5.47	4.79	5.35	4.54										5.73	10.19	3.64	4.33	3.05	5.47	4.79	5.35	4.54	
August	9.36	1.95	2.59	1.98	3.50	3.95	1.40	1.44	2.48										9.36	1.95	2.59	1.98	3.50	3.07	1.40	1.44	2.48	
Sept	11.20	4.82	5.13	5.51	1.50	1.59	3.18	2.83	3.30	1.3	0.0	0.0	1.0	5.4	0.1	0.0	3.1	1.6	4.92	5.37	4.74	2.74	3.73	5.40	1.70	4.75	3.84	
Oct	4.79	5.37	4.74	2.64	3.19	5.30	1.70	4.44	3.60	3.7	11.5	21.7	0.7	5.1	14.6	16.8	12.7	11.0	0.27	2.17	2.07	1.82	4.82	4.93	4.56	4.82	3.94	
Nov	5.90	1.02	0.50	1.70	4.31	3.47	2.81	3.63	2.75	8.3	8.3	24.2	23.0	4.3	32.8	37.4	17.0	23.3	2.87	2.14	3.10	2.50	1.00	5.04	5.48	2.11	3.46	
Dec	0.71	1.31	0.93	0.00	1.17	2.70	1.74	0.29	1.10	61.3	99.6	115.7	133.1	74.3	110.0	160.6	109.4	118.2	54.27	53.67	50.60	41.59	32.84	43.40	30.16	40.80	39.61	
Years	43.14	43.71	28.12	27.64	25.46	32.67	22.77	29.84	27.75																			

NOTE.—The results for 1860 and 1861 are from observations made by Dr. Smallwood, at St. Martin, near Montreal; temperature in degrees Fahrenheit, inches in English measure. The figures in the means and sums row for rain-fall, &c., give the total rain-fall &c., per year, and the means (yearly) for the six years.

Table showing the number of days on which the mean temperature has been below Zero, 30°, 40°, &c.

To find the number of days on which the mean temperature was above any given temperature, subtract the number of days on which it was below that temperature from 365,—thus, the number of days on which it was above 60 was :—365—249=116.

Similarly to find the number of days on which the temperature was between (say) 60° and 70° in 1877 :—320—249=71.

YEAR.	At and below Zero.	At and below 32°.	At and below 40°.	At and below 50°.	At and below 60°.	At and below 70°.	At and below 80°.	At and below 90°.
1875	23	145	186	239	262	336	365	365
1876	11	118	181	228	275	317	362	366
1877	7	110	163	208	249	320	365	365
1878	5	95	156	190	253	330	362	365
1879	9	137	164	198	264	342	365	365
1880	12	130	173	206	252	307	366	366
Means	11	122	170	211	259	325	364	365

During the months November, December, January, February, and March, (in 1875-80)

The mean number of days on which the mean temperature was below zero was 11
 " " " " " " 32° " 118
 " " " " " " 40° " 146
 " " " " " " 50° " 151

During the months April, May, and October—

The mean number of days on which the mean temperature was below zero was 0
 " " " " " " 32° " 5
 " " " " " " 40° " 25
 " " " " " " 50° " 56
 " " " " " " 60° " 79
 " " " " " " 70° " 91
 " " " " " " 80° " 92

During the months June, July, August, and September—

The mean number of days on which the mean temperature was below 40° was 0
 " " " " " " 50° " 0
 " " " " " " 60° " 28
 " " " " " " 70° " 83
 " " " " " " 80° " 121
 " " " " " " 90° " 122

The mean temp. of the air during Nov. Dec. Jan. Feb. and Mar. (1875 to 1880) was 21.1°

" max. " " " " " " 59.5°
 " min. " " " " " " 25.2°
 " mean. " " " " " " 47.4°
 " max. " " " " " " 85.6°
 " min. " " " " " " 8.5°
 " mean. " " " " " " 64.4°
 " max. " " " " " " 92.2°
 " min. " " " " " " 33.1°

GENERAL SUMMARY

OF

CANADIAN COMMERCE AND INDUSTRY.

I.—ITEMS IN THE POSTAL SERVICE.

TRADE AND INDUSTRIAL RELATIONS.

THE trade and commerce of a country may be looked upon as indicative, to a large extent, of its general material prosperity; while the strength of the current of advancement among the population is to be inferred from other data. It was said by a Finance Minister of this Dominion, with a great deal of truth, that the statistics of the Postal Department in any nation are, perhaps, a fairer index of the progressive intelligence and enterprise of the people, than are the more direct records of expanding commerce. As introductory, therefore, to the various general commercial statements which comprise this Preliminary Paper, it may be apposite to refer to the following comprehensive summary, relative to the postal service of the Dominion during the past five fiscal years:—

	1877-78.	1878-79.	1879-80.	1880-81.	1881-82.
No. of Post Offices.....	5,378	5,606	5,733	5,935	6,171
No. of Miles of Mail Route.....		39,598	40,611	41,681	43,097
No. of Miles travelled by Mail.....	15,427,323	16,156,034	16,466,939	17,068,241	18,091,996
No. of letters by post.....	44,000,000	43,900,000	45,800,000	48,170,000	56,200,000
No. of Postal Cards.....	6,455,000	6,940,000	7,800,000	9,640,000	11,300,000
Newspapers from Office of Publication, lbs	3,720,408	4,085,454	4,361,118	4,745,452	4,855,000
Newspapers and miscellaneous, otherwise than from Office of Publication, No.....	11,342,740	10,664,000	11,311,000	12,311,500	14,730,000
No. of registered letters posted in the year	1,980,000	1,980,000	2,040,000	2,253,000	2,450,000
Amount of Postal Revenue.....	\$1,620,022	\$1,534,363	\$1,648,017	\$1,767,162	\$2,022,098
Amount of Expenditures.....	\$2,110,365	\$2,167,266	\$2,286,611	\$2,332,399	\$2,459,356
Amount Money Order issues.....	\$7,130,895	\$6,788,723	\$7,207,335	\$7,725,210	\$8,354,152
Amount at deposit on 30th June, in Post Office Savings Banks.....	\$2,574,484	\$3,105,190	\$3,945,669	\$6,208,226	\$9,473,661

The aggregate of letters and post cards for the year 1881-82 show the remarkable increase of 10,000,000, or 17 per cent. over that of the previous year. Newspapers and periodicals printed and published in Canada, and posted from office of publication, have, since the 1st June, 1882, been carried *free*. The postal revenue for 1881-82 shows an increase of \$254,935, equal to 12½ per cent. advance on the preceding year's collections. It is note-worthy that in Manitoba the postages nearly doubled in the last year. The total expenditure for 1881-82 increased \$126,957, being about 5½ per cent. above that for 1880-81. The

revenue fell short of the expenditure by \$437,258; in the three years ended 30th June, 1882, the postal revenue has increased rather more than 20 per cent., and the expenditure only 7½ per cent; if this relative rate of increase can be maintained the Department will be self-sustaining in a few years. The figures of the Savings Bank department most markedly indicate the prosperity of the wage-earning population, the deposits on 31st December, 1882, being \$10,840,642, exactly double what they were in March, 1881; the average amount standing to each account on 30th June, 1882, was \$184⁰/₁₀₀, which is an increase of 52 per cent. over the previous year, while the number of depositors has increased 30 per cent.

II.—CHARTERED BANKS, &C.

FINANCIAL AND COMMERCIAL EXPANSION.

Referring to the tables on pp. 51, 52, the following very interesting particulars show how greatly Canadian financial institutions have expanded, and prospered, during the past quarter of a century. They relate to the

Banks in the Provinces of Ontario and Quebec.

PAID-UP CAPITAL	June, 1858	\$17,588,000
	April, 1883	54,700,000
CIRCULATION	June, 1858	7,800,000
	April, 1883	35,500,000
	Banks	29,200,000
	Government	6,300,000
DEPOSITS	June, 1858	9,100,000
	April, 1883	133,000,000
	Banks	98,300,000
	Post Office	11,300,000
	Loan Companies.	13,400,000
	Savings Banks ..	10,000,000
DISCOUNTS	June, 1858	30,100,000
	April, 1883	160,000,000

It may appropriately be noted here, that the progressive enlargement in the import and export trade of Canada has been in even a greater ratio, as shown by the subjoined figures covering a period of thirty-three years.

Trade Totals—Imports and Exports.

1850	\$40,000,000
1868	130,000,000
1882	221,556,703

The trade in 1881 was larger in proportion to population than that of the United States; while the shipping (in proportion to population) was more than four times as large.

STATEMENT OF BANKS ACTING UNDER CHARTER,
for the month ending 31st May, 1883, according to the Returns furnished by
them to the Department of Finance.

NAME OF BANK.	Capital Authoriz- ed.	Capital Subscrib- ed.	Capital Paid-up.	Reserve Fund.	Total Liabilities.	Total Assets.	Divid'd decla'd Rate p c. per annum.
ONTARIO.							
Bank of Toronto.....	\$2,000,000	\$2,000,000	\$2,000,000	\$1,060,000	\$ 5,799,675.01	\$ 8,971,732.47	*8
Canadian Bk. of Commerce	6,000,000	6,000,000	6,000,000	1,650,000	17,434,444.58	25,902,324.16	8
Dominion Bank.....	1,500,000	1,500,000	1,499,607	850,000	6,282,482.21	8,742,084.73	10
Ontario.....	1,500,000	1,500,000	1,500,000	335,000	4,850,682.94	6,836,060.79	6
Standard Bank.....	2,000,000	764,600	764,600	80,000	2,635,176.33	3,533,266.62	7
Federal Bank.....	3,000,000	2,966,800	2,787,310	1,450,000	9,292,381.40	13,716,401.66	7
Imperial Bank of Canada..	1,500,000	1,500,000	1,500,000	650,000	5,013,061.74	7,281,853.78	8
Bank of Hamilton.....	1,000,000	1,000,000	976,510	200,000	2,339,294.09	3,645,534.76	7
Bank of Ottawa.....	1,000,000	942,600	840,291	60,000	1,757,271.68	2,753,211.31	6
Western Bank of Canada..	1,000,000	500,000	200,000	Nil.	228,988.55	435,092.17	7
Total Ontario.....	20,500,000	18,674,000	18,068,818	6,335,000	55,733,458.83	81,872,562.47
QUEBEC.							
Bank of Montreal.....	12,000,000	12,000,000	12,000,000	5,750,000	23,731,654.16	42,526,505.78	10
Bank of British N. America	4,866,666	4,866,666	4,866,666	889,718	6,265,468.00	11,492,302.00	6
Banque du Peuple.....	1,600,000	1,600,000	1,600,000	Nil.	1,982,243.48	3,735,772.24	5
Banque Jacques-Cartier...	500,000	500,000	500,000	140,000	1,505,187.37	2,176,927.23	7
Banque Ville-Marie.....	500,000	500,000	464,300	20,000	757,338.66	1,428,230.15	6
Banque d'Hochebourg.....	1,000,000	685,200	685,200	50,000	990,401.21	1,757,634.11	6
Exchange Bank of Canada..	500,000	500,000	500,000	250,000	2,901,249.14	3,831,702.23	8
Molson's Bank.....	2,000,000	2,000,000	2,000,000	425,000	7,211,723.28	9,852,590.34	8
Merchants' Bank of Canada	6,000,000	5,798,267	5,714,506	1,150,000	13,053,307.00	20,180,960.26	7
Banque Nationale.....	2,000,000	2,000,000	2,000,000	Nil.	2,695,097.16	4,711,113.62	Nil.
Quebec Bank.....	3,000,000	2,500,000	2,500,000	325,000	5,027,871.05	8,038,051.11	7
Union Bk. of Low. Canada	2,000,000	2,000,000	2,000,000	30,000	3,303,998.14	5,444,620.93	6
Banque de St. Jean.....	1,000,000	540,000	228,096	10,000	368,551.84	623,663.30	6
Banque de St. Hyacinthe..	1,000,000	504,600	260,740	35,000	800,499.16	1,125,024.25	8
Eastern Townships Bank..	1,500,000	1,479,600	1,399,739	270,000	3,209,692.21	5,029,430.49	7
Total Quebec.....	39,466,666	37,474,333	36,717,242	9,344,718	73,804,281.86	121,774,578.04
Total, Ontario.....	20,500,000	18,674,000	18,068,818	6,335,000	55,733,458.83	81,872,562.47
Total, Ont. & Que..	59,966,666	56,148,333	54,786,061	15,679,718	129,537,740.69	203,647,140.51
NOVA SCOTIA.							
Bank of Nova Scotia.....	1,000,000	1,000,000	1,000,000	400,000	4,010,623.76	5,476,773.12	8
Merchants' Bank.....	1,500,000	1,000,000	998,110	180,000	2,681,862.48	3,922,517.59	7
People's Bank.....	800,000	600,000	600,000	50,000	645,888.55	1,348,646.69	6
Union Bank.....	1,000,000	1,000,000	500,000	80,000	608,348.17	1,225,870.68	6
Halifax Banking Company.	500,000	500,000	500,000	35,000	1,072,455.41	1,602,752.69	6
Bank of Yarmouth.....	400,000	400,000	384,920	20,000	395,459.77	817,487.94	6
Exchange Bk. of Yarmouth	280,000	280,000	245,021	30,000	118,323.42	411,313.17	6
Pictou Bank.....	500,000	500,000	200,000	50,000	873,734.95	1,148,158.00	6
Commercial Bk. of Windsor	500,000	500,000	260,000	78,000	317,803.40	677,773.29	8
Total, Nova Scotia..	6,480,000	5,780,000	4,688,051	923,000	10,724,449.91	16,631,293.17
NEW BRUNSWICK.							
Bank of New Brunswick..	1,000,000	1,000,000	1,000,000	400,000	2,077,654.49	3,541,830.70	8
Maritime B. of Dom. of Can.	2,000,000	686,000	685,800	Nil.	1,034,504.59	1,348,129.58	Nil.
People's Bank.....
St. Stephen's Bank.....	200,000	200,000	200,000	50,000	356,069.78	620,741.66	8
Total, N. Brunswick	3,200,000	1,886,000	1,885,800	450,000	3,468,228.86	5,510,701.94
Total, Ontario and Quebec.	59,966,666	56,148,333	54,786,061	15,679,718	129,537,740.69	203,647,140.51
Total, Nova Scotia.....	6,480,000	5,780,000	4,688,051	923,000	10,724,449.91	16,631,293.17
Total, New Brunswick....	3,200,000	1,886,000	1,885,800	450,000	3,468,228.86	5,510,701.94
Grand Total.....	69,646,666	63,814,333	61,359,912	17,052,718	143,730,469.46	225,789,135.62

* Bonus 2 per cent.—Equal about to a dividend on the whole year of 10 per cent.

Highest and Lowest Prices paid on the Montreal Stock Exchange for the leading Bank and Miscellaneous Stocks during the last three years.

[Transactions of less than 25 shares not included.]

BANKS.	1882.		1881.		1880.	
	Highest Price.	Lowest Price.	Highest Price.	Lowest Price.	Highest Price.	Lowest Price.
1 Montreal	214 $\frac{1}{2}$ 18 Mar	196 $\frac{1}{2}$ 3 Jan	215 $\frac{1}{2}$ 9 May	170 3 Jan	168 $\frac{1}{2}$ 30 Dec	130 $\frac{1}{2}$ 21 Apr
2 Ontario	129 $\frac{1}{2}$ 29 Sep	59 $\frac{1}{2}$ 23 Jan	109 $\frac{1}{2}$ 13 May	55 17 Oct	103 26 Nov	70 10 Jan
3 People's	93 2 Au	86 31 Oct	97 27 May	90 15 July	95 $\frac{1}{2}$ 20 Nov	57 $\frac{1}{2}$ 19 Jan
4 Molsons	132 22 Au	130 9 Jan	120 23 Nov	104 18 Jan	108 23 Nov	76 14 Jan
5 Toronto	195 $\frac{1}{2}$ 11 Sep	166 10 Jan	173 $\frac{1}{2}$ 16 Dec	142 9 Feb	144 $\frac{1}{2}$ 2 Dec	121 $\frac{1}{2}$ 28 Jan
6 Jacques-Cartier	125 21 Apr	112 15 Feb	115 29 Dec	96 3 Jan	101 17 Nov	59 5 Jan
7 Merchants	134 $\frac{1}{2}$ 30 Mar	118 $\frac{1}{2}$ 21 Dec	130 $\frac{1}{2}$ 14 Nov	116 23 Jan	120 24 Nov	83 $\frac{1}{2}$ 7 Jan
8 East. Townships	123 5 Jun	119 $\frac{1}{2}$ 22 Jun	123 15 Dec	114 25 Jan	117 24 Nov	98 5 Jan
9 Union	99 16 Jan	92 $\frac{1}{2}$ 6 Dec	97 $\frac{1}{2}$ 25 May	89 3 Jan	101 17 Nov	68 27 Apr
10 Commerce	151 $\frac{1}{2}$ 9 May	130 21 Dec	156 $\frac{1}{2}$ 16 May	132 17 Jan	143 $\frac{1}{2}$ 25 Nov	114 $\frac{1}{2}$ 22 Jan
11 Exchange	185 11 Sep	145 8 Feb	144 $\frac{1}{2}$ 6 Dec	61 28 Jan	71 4 Nov	40 28 Jun
12 Federal	169 18 Apr	150 22 Dec	168 7 Dec	137 15 Feb	127 $\frac{1}{2}$ 22 Nov	106 $\frac{1}{2}$ 21 Apr
13 Hochelaga	96 $\frac{1}{2}$ 30 May	91 $\frac{1}{2}$ 6 Mar				
MISCELLANEOUS.						
14 Montreal Telegraph Co.	135 16 May	112 24 Mar	135 17 Aug	114 $\frac{1}{2}$ 26 Apr	139 25 Nov	87 $\frac{1}{2}$ 24 Jan
15 Dominion " "	96 $\frac{1}{2}$ 28 Feb	94 $\frac{1}{2}$ 11 Oct	100 7 Sep	88 11 Jan	94 26 Nov	64 2 Jun
16 R. & Ont. Nav. Co. " "	78 3 Oct	49 6 Jan	69 25 July	40 17 Oct	67 $\frac{1}{2}$ 24 Nov	37 $\frac{1}{2}$ 6 Feb
17 Montreal Gas Co.	198 $\frac{1}{2}$ 11 Sep	144 10 Jan	143 4 Aug	109 $\frac{1}{2}$ 2 Feb	158 24 Nov	109 5 Jan
18 City Pass. R. Co.	162 $\frac{1}{2}$ 8 Sep	118 $\frac{1}{2}$ 13 Nov	158 5 Jan	134 $\frac{1}{2}$ 26 Apr	121 $\frac{1}{2}$ 25 Nov	75 19 Jan
19 St. Paul M. & M. Ry.	167 11 Sep	109 25 Jan				
20 Canada Paper Co.	130 12 Sep	112 $\frac{1}{2}$ 11 July	125 9 May	115 8 Jan		
21 Canada Cotton Co.	139 24 Jan	110 18 Nov	165 9 Dec	120 14 Apr		
22 Dundas " " " " " "	155 17 Jan	135 17 Feb	140 15 Feb	115 25 Oct		
23 Montreal " " " " " "	180 4 Jan	150 31 Aug	220 12 May	158 $\frac{1}{2}$ 29 Aug		
24 Mont. Loan & Mort.	110 27 Feb	104 $\frac{1}{2}$ 18 Sep	112 11 Apr	195 22 Dec	112 24 Nov	94 27 Jan
25 Royal C. Ins. Co.	55 20 Dec	48 $\frac{1}{2}$ 2 Aug	57 $\frac{1}{2}$ 12 Apr	50 7 Oct	58 26 Nov	{ 48 13 May & 22 July
26 Can. N.W. Land Co.	48 4 Sep.	142 12 Dec				

* Ex Dividend.

† On reduced capital.

‡ Ex 50 p.c. reduction of Capital.

† Ex \$5,000,000 issue of New Stock.

†† Ex call of £1 per share.

III.—INLAND COMMUNICATIONS BY RAILWAYS AND CANALS.

RAILWAY PASSENGER AND FREIGHT TRAFFIC.

The following table shows the total miles of railway in each of the past eight years,—also the train mileage, number of passengers and tons of freight carried,—earnings, operating expenses, and paid-up capital:—

Year ending 30 June.	Total miles of roads.	Train Mileage.	Number of Passengers.	Tons of Freight.	Aggregate Earnings.	Operating Expenses.	Paid-up Capital.
1875..	4,826 $\frac{1}{2}$	17,680,168	5,190,416	5,670,836	\$19,470,539	\$15,775,532
1876..	5,157 $\frac{1}{2}$	18,103,628	5,544,814	6,331,757	19,358,084	15,802,721	\$317,795,468
1877..	5,574 $\frac{1}{2}$	19,450,813	6,073,233	6,859,796	18,742,053	15,290,091	326,328,976
1878..	6,143 $\frac{1}{2}$	19,669,447	6,443,924	7,883,472	20,520,078	16,100,102	360,617,186
1879..	6,484 $\frac{1}{2}$	20,731,689	6,523,816	8,348,810	19,925,066	16,188,102	362,086,138
1880..	6,891 $\frac{1}{2}$	22,427,449	6,462,948	9,938,858	23,561,447	16,840,705	371,051,192
1881..	7,260	27,301,306	6,943,671	12,065,323	27,987,509	20,121,418	389,285,700
1882..	7,530 $\frac{1}{2}$	27,846,411	9,352,335	13,575,787	29,027,789	22,390,708	415,611,810

The following comparative statement of Passenger and Freight Traffic is from the report of the Chief Engineer and General Manager of the Government Railways:—

NAME OF RAILWAY.	PASSENGERS CARRIED.		TONS OF FREIGHT.	
	1881-82.	1880-81.	1881-82.	1880-81.
Grand Trunk and leased lines.....	2,710,963	2,179,793	3,595,192	3,295,288
Great Western do	2,289,028	1,838,788	2,741,166	2,572,052
Intercolonial	779,994	631,245	838,596	725,577
Canada Southern	312,331	260,990	2,129,733	2,135,811
Northern and North-western	476,878	411,847	614,042	562,309
Midland	126,111	116,554	237,845	202,095
Toronto, Grey and Bruce	145,649	111,076	124,560	116,487

The total number of passengers carried was 9,352,335½ against 6,943,671, showing an increase of 2,408,664½, or 34·68 per cent. over the year 1880-81; and the tonnage of freight handled was 13,575,787 tons, against 12,065,323, showing an increase of 1,510,364 tons, or 12·51 per cent.

CANADIAN CANAL SYSTEM AND INLAND NAVIGATION.

The great lake and river system of Canada has been made continuously navigable for a distance of 2,384 statute miles, by a connecting chain of ten canals, comprising 71¾ miles of artificial navigation. This system extends from the Straits of Belle-Isle to Thunder Bay, at the head of Lake Superior.

The following table of distances indicates also the respective positions of these canals:—

	<i>Statute Miles.</i>
Straits of Belle-Isle to Father Point.....	643
Father Point to Rimouski	6
Rimouski to Quebec	177
Quebec to Three Rivers (or tide-water) ..	74
Three Rivers to Montreal	86
Lachine Canal.....	8½
Lachine to Beauharnois	15½
Beauharnois Canal	11½
St. Cecile to Cornwall	32½
Cornwall Canal	11½
River and Farran's Point Canals	16½
Rapide Plat Canal	4
River and Point Iroquois Canal	7½
Junction and Galops Canal	4½
Prescott to Kingston	66½
Kingston to Port Dalhousie.....	170
Port Dalhousie to Port Colborne (Welland Canal) ..	27
Port Colborne to Amherstburg	232
Amherstburg to Windsor	18
Windsor to Foot of St. Mary's Island	25
Foot of St. Mary's Island to Sarnia	33
Sarnia to Foot of St. Joseph Island	270
Foot of St. Joseph's Island to Sault St. Mary ..	47
Sault St. Mary Canal	1
Head of Sault St. Mary to Point aux Pins	7
Point aux Pins to Duluth	390
Total.....	2,384

DISTANCES TO LIVERPOOL.—Add to this table the 2,234 statute miles' distance from the Straits to Liverpool, and it gives a total navigable length of 4,618 miles from Duluth to Liverpool.

DIFFERENCE OF LEVELS.—The difference in level to be overcome, to where tidal influence ceases, is about 600 feet. Of this, the Canadian Canals, with a total number of 53 locks, overcome a height of 533½ feet. The one mile long Sault Ste. Marie Canal built by the United States, has one lock, lifting 18 feet.

SIZE OF LOCKS.—The size of the Locks in this system ranges from 200 to 270 feet in length, by 45 feet in width. The depth of water is from 9 to 14 feet, and the Government intends to make the whole route fit for vessels of 12 to 14 feet draught of water.

OTTAWA CANALS.—There is besides, the canal route from Montreal to Ottawa and Kingston; a total of 246½ miles, with 59 locks exclusive of the Lachine Canal, and a lockage of 533½ feet. The new works on this route give 9 feet water in locks 45 by 200 feet.

ST. LAWRENCE AND NEW YORK.—Canal navigation is secured between the St. Lawrence and New York by means of the Richelieu River and Chambly Canal. This has 9 locks, with 7 feet depth of water; and connects by Lake Champlain with the United States Erie Canal and the Hudson River; a total of 411 miles.

TRENT RIVER NAVIGATION.—Of the Trent River navigation, between Lake Huron and the Bay of Quinte on Lake Ontario, 235 miles, only part has been made navigable, chiefly for the passage of timber; and 155 miles' distance is available for light draft vessels.

ST. PETER'S CANAL.—The St. Peter's Canal is cut through an isthmus half-a-mile wide, between St. Peter's Bay on the Atlantic, and the Bras d'Or Lakes of Cape Breton. It has a lock 48 by 200 feet, with a depth of 18 feet, and a breadth of 55 feet.

TRAFFIC ON CANADIAN CANALS.

The following statement shows the total traffic on all the Canadian Canals for eleven years, from 1872 to 1882 inclusive:—

Year ending 30th June.	Tons of Freight.	No. of Passengers.	Tonnage of Vessels.
1872	3,030,233	90,644	3,721,364
1873	3,309,299	100,374	3,933,798
1874	3,420,800	95,895	4,099,874
1875	2,931,479	99,206	2,570,205
1876	2,647,602	100,227	3,381,021
1877	2,734,153	146,375	3,576,698
1878	2,478,257	144,370	4,310,862
1879	2,206,679	170,401	3,921,095
1880	2,370,868	129,137	4,143,047
1881	2,556,709	122,507	4,283,817
1882	2,542,843	110,787	4,063,247

TRAFFIC ON THE UPPER LAKES.

The extent and nature of the traffic on the Upper Lakes, as shown by the records of the Sault Ste. Marie Canal, deserve more than a passing notice. A few particulars of the trade passing to and from Lake Superior in each of four years (1873, 1874, and 1879, 1880,) will show an annual aggregate of many millions of dollars. For example:—

Some items of upward traffic.

	1873.	1874.	1879.	1880.
Flour, brls.....	26,795	29,060	15,262	17,191
Coal, tons.....	96,780	84,326	110,704	170,501
Coarse Grains, bush.....	309,645	29,809	291,505	312,716
Ground Feed, tons.....	5,314	3,172	2,630	1,430
Kerosene Oil, brls.....	5,738	6,078	8,200	14,752

Some items of downward traffic.

	1873.	1874.	1879.	1880.
Copper, Mass, tons.....	2,816	3,954	1,440	1,795
Copper, Ingot, tons.....	2,104	13,345	16,148	11,839
Stamp work, tons.....	4,007	8,245	4,721	1,959
Iron Ore, tons.....	504,121	505,384	540,075	670,973
Pig Iron, tons.....	39,849	41,905	6,666	6,004
Silver Ore, tons.....	580	601	324	66
Fish, half brls.....	9,228	43,630	12,071	13,508
Fish, fresh, cars.....	148	124
Wheat, bush.....	2,119,997	1,470,955	2,603,666	2,105,922
Flour, brls.....	145,897	259,347	498,943	506,459
Feed, tons.....	214	970	1,238	886

The dues formerly levied upon craft passing through the Sault Ste. Marie Canal were 2½c. per ton register, whether the vessels passing up or down were light or loaded, and without distinction of nationality. *No dues have been levied since 1881.*

The trade carried on between Lake Superior and the other lakes (including Georgian Bay) gave employment, during the season of navigation in 1879, to vessels of all kinds, aggregating 117,156 tons register,—the capacity in 1880 being 124,948 tons register. The Secretary has at hand a list of names of all these vessels, showing the number of trips made up and down in each of these years. The following summary will convey all the information needed for the present purpose:—

Plying between Lower Lakes and Lake Superior.

	1879.	1880.
Number of Passenger and Mail Steamers.....	10	12
Total Registered Tonnage.....	9,548	12,864
Number of up and down passages through Canal.....	246	286
Number of Steam Barges.....	32	38
Total Registered Tonnage.....	28,206	31,590
Number of up and down passages through Canal.....	504	495
Number of Steam Vessels with Consorts.....	151	163
Total Registered Tonnage.....	63,348	65,721
Number of up and down passages through Canal.....	1,323	1,677

Plying between Chicago and Lake Superior.

	1879.	1880.
Number of Passenger and Mail Steamers	5	5
Total Registered Tonnage	4,453	4,453
Number of up and down passages through Canal	110	100

Canadian Vessels.

Number of Steamers for Freight and Passengers	11	11
Total Registered Tonnage	6,845	6,886
Number of up and down passages through Canal	228	244
Number of Steam Vessels with Barges	16	13
Total Registered Tonnage	4,750	3,482
Number of up and down passages through Canal	80	41

Statement showing the amount and kind of Freight carried through the Sault Ste. Marie Canal to and from Lake Superior on Canadian boats during the seasons of navigation 1879 and 1880:—

Upward Merchandise.

	1879.	1880.		1879.	1880.
Apples	bbls 1,633	2,616	Lath	450,000	60,000
Butter	lbs 244,590	331,118	Lard Oil	bbls 3	157
Bacon	lbs 173,500	522,928	Lard	lbs 17,500	30,130
Beef	lbs 569	bbls 1,574	Liquors	bbls 871	1,090
Boilers	7	1	Locomotives	1
Beer	kegs 301	820	Malt	lbs 55,960	76,215
Bar Iron	tons 477	394	Mowers and Reapers	147	36
Brick	m	7	Machinery	tons 513	291
Cattle	1,291	1,462	Nails	kegs 3,540	8,473
Chloride of Lime	hds	30	Nitro-Glycerine	cans	500
Coal	tons 330	1,920	Pork	bbls 667	505
Coal Oil	851	1,456	Powder	tons 10	218
Candles	lbs 14,260	12,400	Potatoes	bush 750	4,980
Cheese	lbs 30,730	32,000	Pig Iron	tons 24
Cement	bbls 10	320	Railroad Iron	tons 6,875	14,595
Coffee	bags 190	1,359	Railroad Spikes	kegs 2,737	930
Coarse Grain	bush 39,050	22,250	Railroad Cars	15
Dried Fruit	lbs 4,600	30,870	Salt	bbls 3,690	5,264
Dynamite	cans	116	Sugar	bbls 5,731	7,728
Dualine	cans	400	Sheep	833	622
Engines	11	1	Soap	boxes 2,885	3,470
Eggs	bbls 255	543	Soda	lbs 10,700	4,500
Fish	kegs 993	3,253	Steam Shovel	1
Fish	cans	7	Syrup	bbls 212	317
Flour	bbls 5,781	6,358	Shingles	388,000	420,000
Furniture	pieces 2,633	5,176	Tea	chest 2,793	4,197
Flat Cars	32	Tobacco	lbs 36,924	111,100
Ground Feed	tons 100	46	Vinegar	bbls 171	337
Horses and Mules ..	638	654	Vegetables	bush 131	572
Hogs	265	331	Window Glass	boxes 997	2,962
Hay	tons 834	852	Wagons	210	142
Lime	bbls 20	144	Other Goods	tons 10,725	14,258
Lumber	feet 2,676,000	710,000	Passengers	7,445	9,680

Downward Merchandise.

	1879.	1880.		1879.	1880.
Butter.....lbs	8,000	Lumber.....	1,020,000	895,000
Buffalo Robes .bales	297	Oil Cake tons	60
Copper, Mass ..tons	4	Potatoes bush	15
Cornbush	265,155	946,560	Rags..... tons	20
Flour bbls	125,636	112,315	Square Timber Pine		
Floursacks	8,763	c. feet	510,000	167,000
Furs and Pelts.bales	2,514	2,065	Silver Ore tons	276½	56
Fish (fresh). hf bbls	2,455	4,050	Scrap Iron..... tons	30
Fishcars	14	Tallowlbs	2,200	81,140
Flax Seed.....bush	2,582	3,375	Wheat.....bush	380,129	313,602
Feed..... tons	1,036	832	Wool lbs	42,070
Hides.....	3,302	420	Other Merchandise .	80	30
Horses.....	1	Passengers	3,544	3,279
House'ld Goods.pgs	52	29			

With regard to Canadian channels for the future Lake Superior trade, during open navigation each year, the following five routes show comparative distances from Montreal, and indicate that the all-water route via the Welland Canal is 338 miles longer than the rail and water route via Midland City:—

From Montreal to Fort William.

1. By River St. Lawrence, Welland Canal, and Lakes Erie, Huron & Superior. 1,263 miles.
2. By Railway to Goderich,—thence by Lakes Huron and Superior 1,006 “
3. By Railway to Owen Sound,—thence by Georgian Bay and Lake Superior. 980 “
4. By Railway to Collingwood,—thence by Georgian Bay and Lake Superior. 971 “
5. By Railway to Midland City,—thence by Georgian Bay and Lake Superior. 925 “

There will be a sixth line of rail-and-water communication, on the opening of navigation in 1884. It is expected that the Canadian Pacific Railway will be completed to Algoma Mills, on Lake Huron, by the end of 1883; and three first class, full-powered swift propellers will ply between that place and Port Arthur on Lake Superior, connecting these with the railway, whence passengers will take trains to Winnipeg and through to the foot of the Rocky Mountains.

But there is to be another very important line of inland communication in the near future. Ere long, the Canadian Pacific and the Grand Trunk Railways and their combinations will converge at, and cross the Ste. Marie River by a bridge at the Sault, thence connecting with the Northern Pacific Railway, and affording it and its connections in the North-Western States, a short route to the seaboard. On this point, on another occasion, the Secretary remarked as follows:

“It is worthy of notice here, that the export trade in Wheat from Oregon—cargo being taken on board ship at Portland, about 110 miles up the Columbia River, while sometimes part of it is lightered to Astoria,—finds a good deal of its supply in the interior Territory of Montana, and even, it is said, in Dakota. The grain is put into sacks, and conveyed by water, in barges, a distance of 350 miles or more,—there being at present two portages (each of about five miles, traversed by rail,) within that distance, the transportation charges to Portland amounting to 33c. to 35c. per bushel. The rate

of ocean freight from Portland to Liverpool varies, say, from 2s. 6d. to 4s. sterling per cental, insurance costing $1\frac{3}{4}$ to 2 per cent., a good trip by sailing vessel occupying five months. It does not seem improbable, therefore, that when all the railway connections between Montreal and Sault Ste. Marie are completed, the Canadian freight and passenger traffic will be immensely augmented from Montana, Dakota, and Minnesota,—the surplus products of these regions finding a better, because quicker and cheaper, transit to the Canadian inland ocean port, and a nearer outlet there to European countries, than at any United States port on the Atlantic sea-board."

LINKING THE PROVINCES.

While the railways and water-highways of Canada are drawing the older Provinces more closely together, the achievement of the next very few years will be the completion of the Canadian Pacific Railway, and the bringing of British Columbia closely into the great fraternity of Provinces. For the present, trade intercourse takes a long round-about, for Canadian merchandise, say, from Montreal or Toronto, has to go in bond through the United States to San Francisco, and thence by steamship to Victoria. Notwithstanding that long mileage, the imports into the Province beyond the Rockies from Eastern Canada, have been steadily increasing, as may be seen from the following statement relating to the past eleven and a half years:—

Fiscal year ended June 30, 1872.....		\$22,214 52
do do 1873.....		75,604 08
do do 1874.....		66,104 17
do do 1875.....		117,054 16
do do 1876.....		129,735 13
do do 1877.....		160,814 00
Six months ended Dec. 31, 1877.....		57,162 00
Calendar year do 1878.....		169,753 00
do do 1879.....		184,564 00
do do 1880.....		258,207 00
do do 1881.....		422,367 00
do do 1882.....		559,732 00

IV.—THE GENERAL FOREIGN COMMERCE OF CANADA.

IMPORTS AND EXPORTS.

Tables of importations into Canada, by countries, for 1880 to 1882, are given here,—along with a classified table of exportations for 1878 to 1882. There are also three tables from the "Trade and Navigation Returns," which

show the total importations, exportations, and aggregate trade for six years, 1878 to 1882; and a table showing total imports, exports, duty collected, &c., for fifteen years, 1858 to 1882-inclusive. To assist those who may care to examine the details of these statements, it has been considered worth while to take pains to make some analysis of the commercial relations which have existed for more than a decade between Canada and her two best customers,—Great Britain and the United States,—as well as foreign countries.

PERCENTAGE OF CANADIAN IMPORTS FROM				PERCENTAGE OF AGGREGATE TRADE WITH			
	Great Britain.	United States.	Other Countries.		Great Britain.	United States.	Other Countries.
1873.....	53·74	37·44	8·82	1873.....	49·36	41·32	9·32
1874.....	51·08	42·60	6·32	1874.....	49·86	41·76	8·38
1875.....	50·46	42·47	7·07	1875.....	50·82	40·87	8·31
1876.....	43·00	48·63	8·37	1876.....	47·39	43·25	9·36
1877.....	41·09	53·28	5·63	1877.....	47·12	44·77	8·11
1878.....	41·04	53·33	5·63	1878.....	48·89	43·32	7·79
1879.....	38·58	54·44	6·98	1879.....	44·22	46·60	8·99
1880.....	48·08	40·88	11·11	1880.....	50·29	39·26	10·45
1881.....	47·57	40·07	12·36	1881.....	51·25	38·74	10·01
1882.....	44·91	42·87	12·22	1882.....	44·64	44·80	10·56

An examination of the total merchandise imported into Canada from Great Britain and the United States, respectively, during ten years, (the percentages being averaged in periods of five years each,) shows the proportions of dutiable and free goods to have been as follows :—

FROM GREAT BRITAIN.			FROM UNITED STATES.		
	Dutiable.	Free.		Dutiable.	Free.
1873.....	69·29	30·71	1873.....	34·94	65·06
1874.....	75·76	24·24	1874.....	38·86	61·14
1875.....	81·59	18·41	1875.....	43·35	56·65
1876.....	79·51	20·49	1876.....	46·31	53·69
1877.....	83·19	16·81	1877.....	45·86	54·14
Total average.....	77·87	22·13	Total average.....	41·86	58·13
1878.....	85·86	14·14	1878.....	48·25	51·75
1879.....	87·34	12·66	1879.....	54·31	45·69
1880.....	81·36	18·64	1880.....	66·67	33·33
1881.....	82·27	17·73	1881.....	69·83	30·17
1882.....	81·94	18·06	1882.....	68·22	31·78
Total average.....	83·75	16·25	Total average.....	61·46	38·54

The percentage for the latter five years can be verified by examining the following statement:—

	1878.	1879.	1880.	1881.	1882.
GREAT BRITAIN.					
	\$	\$	\$	\$	\$
Dutiable	32,139,783	27,026,210	28,038,118	35,860,461	41,459,730
Free	5,291,397	3,917,493	6,423,106	7,723,347	9,137,611
Total	37,431,180	30,943,703	34,461,224	43,583,808	50,597,341
UNITED STATES.					
Dutiable	23,464,503	23,693,359	19,566,567	25,632,313	32,941,061
Free	25,163,686	19,932,668	9,780,381	11,071,799	15,347,991
Total	48,628,189	43,626,027	29,346,948	36,704,112	48,289,052

It is regretted that accessible statements for comparison here have only been to the close of the fiscal year ended 30th June, 1882. An official return for six months ended 31st December, 1882 (but lacking the comparative figures for corresponding period of 1881), shows the following particulars:—

Grand total value of Imports	\$64,763,486.00
Total Duty collected	12,249,231.05
Value of Cotton Manufactures imported	4,235,715.00
Duty collected on them	917,994.15
Value of Woollen Manufactures imported	5,434,301.00
Duty collected on them	1,464,949.74
The grand total of Exports was	62,235,910.00
Produce of Canada	53,863,989.00
Produce of other countries	8,371,921.00
Aggregate of Imports and Exports	126,999,396.00
Exports less than Imports by	2,527,576.00

The following table, covering a period of twelve years, 1871 to 1882 inclusive, shows the proportions from Great Britain and the United States respectively, to the aggregates of dutiable and free imports into Canada, based upon the tables given on pp. 66, 67:—

Fiscal Year.	Value of Dutiable Goods Imported from Great Britain and percentage of value of Total Dutiable Imports.	Duty paid on Imports from Great Britain, and its percentage on value thereof.	Value of Free Goods from Great Britain, and per centage of value of Total Free Imports.	Value of Exports to Great Britain, and percentage of value of Total Exports.
1871.....
1872.....	\$47,064,533 or 68.93 p.c.	\$6,561,661 or 16.46 p.c.	\$14,836,189 or 37.63 p.c.	\$24,173,224 or 37.35 p.c.
1873.....	47,497,024 " 68.73 "	7,748,591 " 15.58 "	21,025,742 " 37.34 "	30,862,940 " 43.15 "
1874.....	47,789,220 " 69.69 "	7,398,460 " 16.46 "	15,287,217 " 29.88 "	38,743,848 " 50.37 "
1875.....	49,339,119 " 63.01 "	8,881,998 " 18.04 "	11,107,948 " 20.78 "	45,003,882 " 51.39 "
1876.....	32,365,482 " 53.76 "	6,075,756 " 18.76 "	8,348,778 " 24.21 "	40,032,902 " 50.29 "
1877.....	32,916,776 " 54.03 "	6,377,668 " 19.38 "	11,107,948 " 18.81 "	40,723,477 " 54.78 "
1878.....	32,239,783 " 53.77 "	6,445,985 " 20.06 "	6,655,463 " 16.84 "	41,567,469 " 57.88 "
1879.....	27,026,210 " 48.76 "	6,549,626 " 20.53 "	3,917,493 " 15.73 "	45,911,539 " 50.77 "
1880.....	28,038,118 " 51.75 "	6,737,997 " 24.03 "	6,423,106 " 36.49 "	36,295,718 " 52.15 "
1881.....	35,860,461 " 50.07 "	8,772,950 " 24.46 "	7,723,347 " 38.64 "	53,751,570 " 54.69 "
1882.....	41,459,730 " 48.35 "	10,011,811 " 24.15 "	9,137,611 " 33.98 "	45,274,461 " 44.33 "

Fiscal Year.	Value of Dutiable Goods Imported from the United States, and percentage of value of Total Dutiable Imports.	Duty Paid on Imports from the United States, and its percentage on value thereof.	Value of Free Goods from the United States, and percentage of value of Total Free Imports.	Value of Exports to the United States and percentage of value of Total Exports.
1871.....
1872.....	\$12,048,548 or 17.65 p.c.	\$2,325,906 or 18.39 p.c.	\$22,169,421 or 56.23 p.c.	\$30,975,642 or 49.88 p.c.
1873.....	16,678,805 " 23.43 "	2,216,215 " 17.77 "	31,056,873 " 55.16 "	41,232,939 " 46.86 "
1874.....	21,103,356 " 27.68 "	2,966,116 " 17.44 "	33,176,393 " 64.84 "	42,072,528 " 40.56 "
1875.....	22,023,665 " 28.18 "	3,681,014 " 17.50 "	28,779,234 " 69.38 "	36,244,311 " 38.40 "
1876.....	21,334,613 " 36.41 "	3,853,634 " 19.24 "	24,730,371 " 71.70 "	29,911,983 " 39.44 "
1877.....	23,510,848 " 38.59 "	4,104,483 " 18.69 "	27,798,633 " 78.57 "	31,933,459 " 33.97 "
1878.....	23,464,503 " 39.25 "	4,790,426 " 20.41 "	25,163,686 " 80.08 "	25,775,245 " 31.82 "
1879.....	23,693,359 " 42.74 "	5,508,477 " 23.25 "	19,932,668 " 80.01 "	25,244,898 " 37.99 "
1880.....	19,566,667 " 36.11 "	5,508,477 " 23.06 "	9,780,361 " 55.57 "	33,349,909 " 37.76 "
1881.....	25,632,313 " 35.79 "	5,649,151 " 22.04 "	11,071,799 " 56.39 "	36,866,225 " 37.81 "
1882.....	32,941,061 " 38.41 "	7,073,912 " 21.17 "	15,347,991 " 57.07 "	47,940,711 " 46.94 "

STATISTICAL VIEW of the Commerce of the Dominion of Canada, exhibiting the Value of Exports to the Value of Goods Entered for Consumption from Great Britain, her Colonies, and Foreign Countries, distinguishing Produce of Canada from Not Produce, Dutiable from Free Goods, and showing the Amount of Duty collected thereon, during the Fiscal Year Ending 30th June, 1880:

COUNTRIES.	GOODS EXPORTED.			GOODS ENTERED FOR CONSUMPTION.				
	Produce of Canada.	Not the Produce of Canada.	Total Exported.	Dutiable.	FREE.	Total Entered for consumption.	Total Duty collected.	
Great Britain.....	\$35,208,031	\$10,606,095	\$45,814,126	\$28,036,118	\$6,423,106	\$34,461,224	\$6,737,997	
United States.....	26,762,705	2,043,879	28,806,584	19,560,567	9,780,381	29,346,948	4,612,451	
Newfoundland and St. Pierre.....	1,468,111	175,972	1,644,083	12,520	581,485	594,005	4,334	
British West Indies.....	1,888,726	17,327	1,906,053	1,144,239	64,523	1,208,762	454,927	
Spanish West Indies.....	1,318,587	1,001	1,319,588	1,705,745	5,717	1,711,462	847,720	
Other West Indies.....	308,298	10,164	318,462	6,314	18,556	24,870	2,848	
British Guiana.....	260,633	692	261,325	103,715	473	104,188	85,173	
Mexico and Central America.....	33,739	33,739	3,974	3,974	2,126	
South America.....	757,990	446	758,436	171,846	34,763	175,319	74,648	
France.....	694,228	118,601	812,829	1,058,707	57,134	1,115,841	427,938	
Germany.....	75,982	6,255	82,237	403,820	45,971	449,791	103,157	
Spain.....	54,123	12,450	66,573	217,424	19,094	236,518	106,721	
Portugal.....	165,885	165,885	25,144	25,144	35,767	
Italy.....	163,788	163,787	57,555	401,953	459,508	14,936	
Belgium.....	475,430	213,391	688,811	148,806	280	149,086	30,031	
Holland.....	74,080	28,512	102,592	169,513	1,732	171,245	41,886	
Norway, Sweden, Denmark, Austria and Russia.....	50,387	50,387	25,864	1,050	26,914	5,062	
Switzerland.....	78,693	15,532	94,225	18,764	
Turkey and Greece.....	9,592	9,592	34,588	2,250	34,838	8,487	
Asia.....	26,665	26,665	5,333	
Africa.....	82,373	84	82,457	1,344	136,538	137,892	613	
Australia and New Zealand.....	155,653	151	155,804	46	1,835	1,881	28	
East Indies.....	9,015	246	9,261	255,393	3,465	258,858	120,236	
China and Japan.....	37,510	36	37,546	893,683	228	893,911	207,920	
Sandwich Islands.....	15,869	15,869	736	15,105	15,841	114	
Spanish possessions in Pacific Ocean countries.....	31,688	31,688	14,929	
Other countries.....	25,447	4,704	30,151	200	8,868	9,068	40	
Total.....	\$70,897,096	\$13,240,006	\$83,336,197	\$54,182,967	\$17,599,382	\$71,782,349	\$14,129,953	

STATISTICAL VIEW of the Commerce of the Dominion of Canada, exhibiting the Value of Exports to the Value of Goods Entered for Consumption from Great Britain, Her Colonies and Foreign Countries, distinguishing Produce of Canada from Not Produce, Dutiable from Free Goods, and showing the amount of Duty collected thereon, during the Fiscal Year, ending 30th June, 1881.

COUNTRIES.	GOODS EXPORTED.			GOODS ENTERED FOR CONSUMPTION.			
	Produce of Canada.	Not the Produce of Canada.	Total Exports.	Dutiable.	Free.	Total Entered for consumption.	Total Duty Collected.
Great Britain.....	\$42,637,219	\$11,110,151	\$53,747,370	\$35,860,461	\$7,723,347	\$43,583,808	\$8,772,950
United States.....	31,015,109	1,863,989	32,879,098	25,632,313	11,071,799	36,704,112	5,649,152
Newfoundland and St. Pierre.....	1,317,431	359,022	1,676,453	15,437	655,357	670,794	5,388
British West Indies.....	1,770,632	17,181	1,787,813	1,794,105	94,590	1,888,695	718,567
Spanish West Indies.....	1,162,684	4,928	1,167,612	1,883,797	16,016	1,899,813	863,548
Other West Indies.....	187,534	4,410	191,944	6,196	20,443	26,639	2,507
British Guiana.....	215,029	15	215,044	171,307	2,941	173,978	109,285
Mexico and Central America.....	18,322	18,322	21,114	294	23,408	9,005
South America.....	710,647	4,415	715,062	623,446	14	623,460	274,793
France.....	662,711	662,711	1,576,749	54,583	1,631,332	597,949
Germany.....	77,408	7,524	84,932	828,779	105,487	934,266	215,108
Spain (including Gibraltar).....	59,051	59,051	379,055	20,631	399,686	167,413
Portugal.....	107,906	688	108,594	46,422	10,471	56,893	25,308
Italy.....	145,997	145,997	75,739	12,987	88,726	40,956
Belgium.....	257,623	810	258,433	376,946	35,888	412,834	90,251
Holland.....	215,754	215,754	224,738	452	225,190	372,336
Norway, Sweden, Denmark, Austria and Russia.....	67,644	67,644	43,212	12,236	55,448	8,870
Switzerland.....	140,415	1,374	141,789	33,740
Turkey and Greece.....	764	764	112,392	3,594	116,986	28,229
Asia Minor.....	55,777	55,777	11,155
Africa.....	81,591	53	81,644	170	139,943	45
Australia and New Zealand.....	147,911	1,000	148,911	143	143	90
East Indies.....	5,020	5,020	123,574	123,953	48,280
China and Japan.....	19,749	12	19,761	1,403,750	7,223	1,410,973	348,467
Sandwich Islands.....	18,256	18,256
Spanish Possessions in Pacific Ocean.....	221,956	221,956	98,718
Other countries.....	19,437	3,002	3,002	495
Totals.....	\$80,921,378	\$13,375,117	\$94,296,496	\$71,620,726	\$19,990,879	\$91,611,604	\$18,492,645

Washington, View of the Commerce of the Dominion of Canada, exhibiting the Value of Exports to the Value of Goods Received Consumption from Great Britain, the United States and Foreign Countries, and including Produce of Canada from 1805 to 1822, and showing the Amount of Duty collected thereon, during the Period Year ending 30th June, 1822

Commodity	Goods Exports			Goods Received and Consumption			
	Produce of Canada	Value of the Produce of Canada	Total Exports	Debitable	Price	Total Received for Consumption	Total Duty Collected
Great Britain	\$59,816,812	\$5,457,117	65,273,929	\$41,456,730	3,137,811	50,597,541	10,011,811
United States	41,687,638	1,787,582	43,475,220	32,961,061	15,347,093	48,298,052	7,073,012
Newfoundland and N. West Indies	1,765,319	392,077	2,157,396	9,244	409,719	509,363	2,891
British West Indies	1,677,972	10,990	1,688,962	1,746,024	83,700	1,848,734	462,315
Spanish do	1,678,259	14	1,678,273	2,123,373	13,795	2,138,168	948,791
Other do	227,828	511	228,339	21,338	16,069	38,407	9,699
British Orleans	228,903	136	229,039	198,370	4,370	203,359	117,665
Central America	30,391	30,391	31,574	3,783	35,210	16,327
South America	889,754	2,653	892,407	1,073,690	292,727	1,358,407	402,744
France	823,552	20	823,572	1,988,898	108,640	2,097,359	742,775
Germany	152,248	220	152,468	1,331,373	148,738	1,480,094	339,691
Spain	117,319	117,319	548,298	13,921	462,219	210,797
Portugal	152,240	7,504	159,744	48,191	3,721	51,912	29,106
Italy	163,755	163,755	40,220	12,868	32,098	34,292
Belgium	142,368	142,368	632,027	70,183	503,210	119,492
Holland	203,198	203,198	235,471	12,628	248,043	420,408
Switzerland	57	57
Denmark, Norway, Sweden
Russia and Austria	68,887	68,887	72,191	4,710	79,301	13,742
Turkey and Greece	694	694	397,729	1,099	399,431	70,338
Africa	55,134	230	55,364	1,121	204,745	204,387	41
Australia and New Zealand	357,192	3,158	360,351	1,895	242	2,137	519
East Indies	48	48	398,487	15,607	313,974	141,031
China and Japan	108,322	343	108,665	824,328	904,714	1,529,042	179,499
Sandwich Islands	46,622	14	46,636	4,697	10,969	15,696	169
Other Countries	54,350	5,340	59,690	2,398	3,321	4,219	1,718
Totals	\$60,042,711	\$7,628,453	\$67,671,164	\$65,737,421	\$26,491,404	\$112,648,327	\$21,700,027

Statement showing total values, also the values of different (or principal) articles of Produce and Manufacture exported from the Dominion during the past five fiscal years:—

ARTICLE.	1881-82	1882-83.	1878-80.	1874-75.	1877-78.
PRODUCE OF THE MINE.					
Coal	1,078,704	1,128,001	1,011,889	937,288	1,210,888
Iron	185,401	114,850	78,474	7,530	13,405
Copper	139,246	150,412	150,789	19,762	119,829
Phosphates	327,007	239,493	119,882	210,296	64,812
Gold-bearing Quartz	930,151	767,318	1,080,891	844,095	1,031,569
PRODUCE OF THE FISHERIES.					
Herring	507,705	463,828	455,063	446,581	486,265
Cod	3,427,830	3,180,014	3,564,036	3,197,115	3,192,216
Haddock	473,547	823,015	686,414	814,282	1,035,760
Loobers	1,446,151	1,349,229	918,790	1,164,529	927,357
Salmon	1,113,427	470,492	546,952	926,508	759,922
PRODUCE OF THE FOREST.					
Square Timber	3,706,314	3,011,140	2,426,465	1,880,596	4,714,515
Lumber (Planks and Boards)	3,207,862	7,101,512	5,880,281	4,119,344	4,375,152
Shingles	238,585	188,444	121,445	149,246	144,485
Shingle Bolts	6,653	3,386	2,262	385	747
Deals and Deal Ends	3,191,508	9,001,682	5,998,145	6,243,519	7,921,281
ANIMALS AND THEIR PRODUCTS.					
Horses	2,326,637	2,094,037	1,880,379	1,376,794	1,273,728
Cattle	3,256,330	3,464,871	2,764,437	2,066,596	1,172,334
Sheep	1,228,957	1,372,127	1,422,830	988,045	699,337
Cheese	5,500,868	5,510,443	3,893,366	3,790,390	3,597,221
Butter	2,936,156	3,573,034	3,058,069	2,101,897	2,382,237
Eggs	1,643,709	1,103,812	740,665	574,093	644,574
Furs	1,278,340	1,983,096	1,035,625	1,191,356	1,326,861
AGRICULTURAL PRODUCTS.					
Wheat	5,180,335	2,593,820	5,942,042	6,274,540	5,276,125
Poss	3,191,869	3,478,003	2,977,516	2,055,372	1,984,161
Barley	10,114,623	6,269,182	4,381,685	4,783,487	4,315,739
Rye	1,191,119	783,840	702,701	304,017	251,669
Oats	1,728,774	1,191,873	1,767,326	304,225	970,285
Flour of Wheat	2,748,988	2,173,108	2,990,955	2,272,675	2,729,466
Manufactures	3,329,598	3,075,095	13,569,224	11,101,761	12,627,233
Unenumerated Articles	14,237,190	11,255,223			
Total Value of Produce of Canada	90,042,711	80,921,379	70,096,191	60,683,578	65,740,124
Total Value not the Produce of C'da	7,828,453	13,375,117	13,240,008	8,335,844	11,164,378
Grand Total, exclusive of Coin and estimated amount short returned at Inland Ports	97,871,164	94,296,496	83,336,197	68,445,222	76,905,012

VALUE OF EXPORTS BY COUNTRIES.

COUNTRIES.	1877.	1878.	1879.	1880.	1881.	1882.
Great Britain	\$ 41,567,469	\$ 45,911,539	\$ 36,295,718	\$ 45,846,062	\$ 53,751,570	\$ 45,274,461
United States	25,775,245	25,244,898	27,165,501	33,349,909	36,966,225	47,940,711
France	319,330	369,391	714,875	812,829	662,711	825,573
Germany	34,324	122,254	112,090	82,327	84,932	153,114
Spain	62,659	47,816	50,596	60,727	46,653	108,082
Portugal	129,960	104,028	135,748	165,885	108,594	149,744
Italy	213,692	151,861	148,472	163,787	145,997	163,755
Holland	94,303	53,750	9,713	102,592	215,754	365,198
Belgium	66,912	49,998	40,430	688,811	258,433	142,358
Newfoundland	2,112,108	2,094,682	1,641,417	1,510,300	1,623,469	1,974,923
British West Indies	2,194,649	1,950,144	1,955,584	1,906,053	1,787,813	1,688,962
Spanish West Indies	1,284,375	1,089,807	1,237,598	1,319,588	1,107,612	1,078,273
French West Indies	160,212	246,738	219,121	223,973	111,175	155,219
Other West India Islands	149,622	127,458	88,367	94,489	80,769	73,118
South America	651,625	654,357	741,442	789,940	732,111	941,162
China and Japan	37,149	102,568	56,551	37,546	19,761	106,675
Australia	185,610	370,723	290,762	139,901	146,363	340,608
South Africa	23,170	46,365	45,515	82,178	81,644	95,384
Other Countries	812,931	605,290	541,755	534,651	499,237	559,903
Totals	75,875,393	79,323,667	71,491,255	87,911,458	98,290,823	102,137,203

VALUE OF GOODS ENTERED FOR CONSUMPTION, BY COUNTRIES.

Great Britain	39,572,239	37,431,180	30,993,130	34,461,224	43,583,808	50,597,341
United States	51,312,669	48,631,739	43,739,219	29,346,948	36,704,112	48,259,052
France	1,410,732	1,385,003	1,532,191	1,115,841	1,681,332	2,097,358
Germany	370,594	399,326	440,909	449,791	984,266	1,430,004
Spain	278,068	277,429	343,849	236,518	399,684	462,219
Portugal	45,465	41,913	25,510	35,767	56,893	51,912
Italy	29,250	53,310	33,461	469,508	88,726	93,086
Holland	202,557	213,014	200,575	171,245	225,190	248,043
Belgium	251,812	255,694	179,031	149,086	412,834	503,210
Newfoundland	641,642	672,665	639,406	581,961	652,304	493,509
British West Indies	640,716	578,405	650,087	1,208,822	1,888,695	1,848,724
Spanish West Indies	563,451	417,178	575,969	1,711,462	1,399,813	2,136,168
French West Indies	25,022	21,696	18,008	8,884	18,185	25,895
Other West India Islands	13,620	16,580	8,365	15,986	8,454	12,597
South America	4,971	15,447	4,388	238,431	637,620	1,373,617
China and Japan	418,606	383,676	448,962	893,911	1,410,973	1,529,042
Switzerland	69,066	61,178	94,781	94,225	141,789	268,093
Australia	1,851	1,881	143	2,157
South Africa	97,394	45,019	106,592	136,675	138,815	204,867
Other Countries	352,579	299,135	305,324	149,133	777,968	932,083
Totals	96,300,483	91,199,577	80,341,608	71,782,349	91,611,604	112,648,927

Aggregate Trade of the Dominion on the basis of Goods Entered for Consumption, and Exports, by Countries.

Great Britain	81,139,708	83,372,719	67,268,848	80,307,286	97,335,378	95,871,802
United States	77,067,914	73,876,637	70,904,720	62,696,857	73,570,337	96,229,763
France	1,730,062	1,754,394	1,247,066	1,928,670	2,294,043	2,922,931
Germany	404,918	521,580	552,999	532,028	1,019,198	1,638,118
Spain	340,767	325,245	394,445	297,245	446,337	570,301
Portugal	175,425	145,941	161,253	201,662	166,487	201,656
Italy	242,942	205,171	181,933	623,295	234,723	256,841
Holland	296,960	266,764	210,288	273,837	440,944	613,241
Belgium	318,724	305,692	219,461	837,896	671,267	645,568
Newfoundland	2,753,748	2,767,347	2,290,823	2,092,261	2,175,778	2,468,432
British West Indies	2,835,365	2,528,549	2,605,671	3,114,875	3,676,508	3,537,686
Spanish West Indies	1,847,826	1,456,985	1,313,567	3,081,060	3,067,425	3,214,441
French West Indies	185,234	268,424	237,129	232,857	129,380	181,114
Other West India Islands	163,242	144,038	96,732	110,475	89,223	85,715
South America	656,596	669,804	745,830	1,073,421	1,369,731	2,314,779
China and Japan	455,755	496,244	505,513	931,457	1,430,734	1,635,717
Switzerland	69,066	61,178	94,781	94,225	141,789	268,098
Australia	185,610	370,723	292,613	141,782	146,506	342,765
South Africa	120,564	91,384	152,107	218,853	220,459	300,231
Other Countries	1,166,560	904,425	847,079	958,734	1,277,205	1,491,936
Totals	172,175,376	170,523,244	151,832,363	159,698,307	189,902,427	214,736,130

STATEMENT showing the values of total Exports, Imports, and Goods entered for Consumption in the Dominion, with the Duty collected thereon, for fifteen years.

	Total Exports.	Total Imports.	Total Imports and Exports.	Entered for Consumption.	Duty.
	\$	\$	\$	\$	\$
Fiscal Year ending 30th June, 1868....	57,567,888	73,459,644	131,027,532	71,985,308	8,819,431 63
do do 1869....	60,474,781	70,415,165	130,889,946	67,402,177	8,296,909 71
do do 1870....	73,573,490	74,814,339	148,387,829	71,237,603	9,462,940 44
do do 1871....	74,173,618	96,062,971	170,236,589	86,947,483	11,843,655 75
do do 1872....	82,639,663	111,430,527	194,070,190	107,709,116	13,045,493 50
do do 1873....	89,789,922	128,011,231	217,801,203	127,514,594	13,017,730 17
do do 1874....	89,351,928	128,213,532	217,565,510	127,404,169	14,421,882 67
do do 1875....	77,886,979	123,070,233	200,957,262	119,618,657	15,361,382 12
do do 1876....	80,966,435	93,210,346	174,176,781	94,733,218	12,833,114 48
do do 1877....	75,875,393	99,327,962	175,203,355	96,300,433	12,548,451 09
do do 1878....	79,323,667	93,051,767	172,405,434	91,199,577	12,795,693 17
do do 1879....	71,491,255	81,964,427	153,455,682	80,341,608	12,939,540 66
do do 1880....	87,911,458	86,489,747	174,401,205	71,782,349	14,138,849 22
do do 1881....	98,290,823	105,330,840	203,621,663	91,611,604	18,500,785 97
do do 1882....	102,137,203	119,419,500	221,556,703	112,648,927	21,706,837 43
Aggregate for fifteen years....	1,201,454,503	1,484,332,401	2,685,786,904	1,418,436,963	199,736,696 01

V.—THE CANADIAN SUGAR TRADE.

1878 TO 1882.

The tables on pp. 69, 70, afford a comprehensive view of the course of the Sugar Trade of the Dominion for half a decade. The contrasts between 1878 and 1882 are remarkable. The years are fiscal ones.

Summary of Imports.

	1878.	1882.
From Great Britain	lbs. 51,187,301	2,770,089
“ United States	“ 50,394,946	11,575,426
“ West Indies	“ 7,534,468	79,078,494
“ Brazil	“ nil.	33,805,480
“ Central America	“ nil.	210,897
“ British East Indies	“ nil.	1,158,464
“ Dutch East Indies	“ nil.	6,359,038
“ All other Countries	“ 347,700	371,809
Total.....	lbs. 109,463,915	135,329,697

NOTE.—Six (6) per cent. of the raw sugar noted here as from the United States in 1882, came from the West Indies through United States ports.

A special return shows the gross imports of Sugar into Canada during the six months ended 31st December, 1882, to have been 74,871,521 lbs., valued at \$2,584,015,—the duty amounting to \$1,211,702.53.

THE FISCAL YEAR 1878 indicated a home consumption of 109½ million lbs. of Sugar, which cost over 6 millions of dollars,—the revenue accruing amounting to 2½ millions of dollars. Great Britain and the United States divided between them the refining of Sugar for the Canadian market, so that 101½ million lbs. came from these countries in nearly equal proportions. The higher grades, artificially cheapened by a bounty paid by the United States Government, came thence; while the common grades were provided by Great Britain; and the trade in raw sugars had dwindled down to 7½ million lbs. from the West Indies, principally raw sugars for sale in that state. No sugar came from Brazil; while the fraction from “all other countries” was less than 500,000 lbs. *Under an adverse fiscal policy, Sugar refining in Canada had ceased as an industry, notwithstanding that it was well-enough known that labor and capital could be profitably employed in it. To make this possible, the tariff was about to be adjusted, the trade in raw sugars from the place of growth was to be revived, and the Intercolonial Railway was to have the Winter traffic.*

THE FISCAL YEAR 1882, by its record, shows a total home-consumption of 135,329,697 lbs., costing \$4,846,006, and yielding a revenue of \$2,229,761. Suppose the Sugar from Great Britain to be refined, it is only 2½ per cent. of the total importation; and about 4 per cent. of what comes from the United States (viz., sugar above 14 D.S.,) is refined; so that 93¾ per cent. of the aggregate importation consists of raw sugar,—87 per cent. of it coming from the West Indies and Brazil (against 6 per cent. in 1878!), including the 6 per cent. coming through United States territory from the West Indies, nearly 6 per cent. from the East Indies, and about ½ per cent. from “all other countries.”

AS REGARDS SUGAR REFINING:—There are 5 refineries in operation in the Dominion at present—2 in Montreal, 1 in Moncton, and 2 in Halifax—representing a capital of over \$2,750,000, giving direct employment to about 3,500 workmen, and indirectly to over 30,000 persons. It is now definitely stated that the refinery at Woodside, opposite Halifax, will be in operation next year, with a capacity fully equal to that of the Canada Sugar Refining Company's works in this city.

BET-ROOT SUGAR MAKING, in the Province of Quebec, has proved to be a failure. This is to be regretted, for a good deal of money and labor have been sunk in it. A few years ago, Mr. Dustan of Halifax, in correspondence published in the *Montreal Gazette*, showed (as it now seems, conclusively,) that the farmers cannot grow the roots at the price which it would pay the sugar-makers to give for them. For that and other reasons, his conclusion was that the Beet-Sugar Industry could not succeed in Canada.

THE COURSE OF THE SUGAR TRADE.

For the Year ending June 30th, 1878.

From what Country.	Weight.	Cost.	Duty.	Rate of Duty.	Proportion of Value.
	Lbs.	\$	\$	Per Cent.	Per Cent.
Great Britain	51,187,301	2,763,022	1,189,889.75	43.07	44.67
United States	50,394,946	2,026,425	1,236,737.72	40.86	48.92
West Indies	7,564,468	379,413	160,870.55	42.40	6.13
Brazil	Nil.	Nil.
All other Countries	347,200	17,366	7,576.46	43.60	0.28
Totals	109,463,915	6,186,226	2,595,074.48	41.95	100.00

For the Year ending June 30th, 1880.

From what Country.	Weight.	Cost.	Duty.	Rate of Duty.	Proportion of Value.
	Lbs.	\$	\$	Per Cent.	Per Cent.
Great Britain	15,420,581	657,103	369,281.28	56.19	16.83
United States	15,659,483	601,031	288,529.65	48.00	15.39
West Indies	72,790,700	2,236,412	1,164,600.64	52.07	57.28
Brazil	4,812,851	134,747	65,273.07	48.44	3.45
All other Countries	8,163.435	274,994	139,007.40	50.55	7.05
Totals	116,847,050	3,904,287	2,026,692.04	51.93	100.00

For the Year ending June 30th, 1881.

From what Country.	Weight.	Cost.	Duty.	Rate of Duty.	Rate P. C. of Duty.
	Lbs.	\$	\$	Per Cent.	Per Cent.
Great Britain	15,951,870	728,911	385,438.04	53	14.2
United States	10,131,108	440,632	201,555.98	46	8.6
West Indies	80,690,967	2,977,551	1,424,922.83	48	58.2
East Indies	8,636,444	305,568	139,512.60	46	5.9
Brazil	18,535,499	565,392	263,712.86	47	11.3
All other Countries	2,460,625	92,939	44,000.18	47	1.8
Totals	136,406,513	5,110,993	2,459,142.49	48	100.00

For the Year ending June 30th, 1882.

From what Country.	Weight.	Cost.	Duty.	Rate of Duty.	Proportion of Value.
	Lbs.	\$	\$	Per Cent.	Per Cent.
Great Britain	2,770,089	121,217	63,534.77	52.4	2.5
United States	11,575,426	493,696	219,239.18	44.4	10.2
West Indies	79,078,494	2,878,184	1,376,952.16	47.8	59.4
Brazil	33,805,480	1,050,477	487,442.47	46.4	21.7
Central America	210,897	8,919	4,964.74	55.6	.2
British East Indies	1,158,464	45,788	21,581.42	47.1	.9
Dutch East Indies	6,359,038	226,609	114,955.10	50.7	4.7
All other Countries	371,809	21,116	11,091.99	52.5	.4
Totals	135,329,697	4,846,066	2,299,761.83	47.5	100.0

RECAPITULATION.

FOR THE FISCAL YEAR ENDING JUNE 30th, 1882.

BY COUNTRIES.

Countries whence Imported.	Imported.		Entered for Home Consumption.			Rate of Duty.	Proportion of Value.
	Quantity.	Value.	Quantity.	Value.	Duty Collected.		
	Lbs.	\$	Lbs.	\$	\$	per cent	per cent
Great Britain	3,239,080	139,432	2,770,089	121,217	63,534.77	52.4	2.5
United States	10,584,951	455,492	11,575,426	493,696	219,239.18	44.4	10.2
West Indies	84,756,712	3,117,259	79,078,494	2,878,184	1,376,952.16	47.8	59.4
Brasil	36,216,898	1,115,126	33,805,480	1,050,477	487,442.47	46.4	21.7
Central America ...	415,577	17,020	210,897	8,919	4,964.74	55.6	.2
British East Indies	1,158,464	45,788	21,581.42	47.1	.9
Dutch East Indies..	6,081,864	214,654	6,359,038	226,609	114,955.10	50.7	4.7
All other Countries.	462,514	26,537	371,809	21,116	11,091.99	52.5	.4
Total	141,757,596	5,086,020	135,329,697	4,846,006	2,299,761.83	47.5	100.0

BY GRADES.

	Imported.		Entered for Home Consumption.			Rate of Duty.	Proportion of Value.
	Quantity.	Value.	Quantity.	Value.	Duty Collected.		
	Lbs.	\$	Lbs.	\$	\$	per cent	per cent
Sugar above 14 D.S.	5,969,647	291,273	6,230,320	302,882	168,313.75	55	6.2
Equal to 9 & up to 14	55,393,936	2,063,440	51,452,872	1,912,258	959,588.68	50	39.4
Below No. 9 D. S...	73,635,927	2,521,656	70,076,216	2,397,125	1,069,519.08	45	49.4
Cane Juice, &c.....	1,175,488	49,134	1,531,583	58,577	27,046.00	47	1.2
Melado, &c.....	5,582,598	160,517	6,038,706	175,164	75,194.32	43	3.8
Total	141,757,596	5,086,020	135,329,697	4,846,006	2,299,761.83	47½	100.0

BY PROVINCES.

Countries whence Imported.	Imported.		Entered for Home Consumption.			Rate of Duty.	Proportion of Value.
	Quantity.	Value.	Quantity.	Value.	Duty Collected.		
	Lbs.	\$	Lbs.	\$	\$	per cent	per cent
Ontario	9,245,662	358,392	9,335,106	361,296	181,684.22		
Quebec	83,853,913	2,861,153	84,859,337	2,903,885	1,357,510.68		
Nova Scotia	36,304,104	1,333,229	24,241,516	876,813	427,373.08		
New Brunswick....	9,326,129	353,102	13,845,211	523,455	246,487.78		
Manitoba	673,707	30,380	727,901	32,192	14,529.26		
British Columbia...	2,142,992	138,815	1,896,479	129,263	62,473.68		
Prince Edwd. Island	166,846	7,140	379,904	15,293	8,027.81		
N. W. Territories..	44,243	3,809	44,213	3,809	1,675.32		
Total	141,757,596	5,086,020	135,329,697	4,846,006	2,299,761.83		

VI.—OTHER STAPLE GROCERIES, &c.

MOLASSES, CANE JUICE, &c.

Imported into the Dominion during the Last Five Fiscal Years.

Whence.	1881-82.	1880-81.	1879-80.	1878-79.	1877-78.
Cane Juice, Melado, Glucose, &c.	Lbs.	Lbs.	Lbs.	Lbs.	Lbs.
United States.....	3,627,286	3,558,482	5,854,379	3,218,842	4,025,678
Brazil.....	289,955
British West Indies.....	1,320,525
Spanish West Indies.....	3,578,247	2,640,454	6,039,418	1,568,902
China.....	1,083,762
Other countries.....	684	1,515	136,330	170,653	16,808
Total.....	7,496,171	7,284,213	13,350,662	4,958,397	4,042,486
Molasses.	Galls.	Galls.	Galls.	Lbs.	Lbs.
British West Indies....	2,156,842	2,188,751	1,849,993	22,707,979	25,440,678
Spanish West Indies....	826,345	1,017,624	445,593	6,443,450	7,047,076
British Guiana.....	372,506	390,143	334,347	3,379,620	6,044,193
Sandwich Islands.....	21,407	13,116	5,880	47,741	200,929
United States.....	179,243	531,094	94,549	10,095,407	13,239,889
Great Britain.....	283	80,246	3,238	94,088	343,390
Other countries.....	1,609	2,487	8,119	39,368	782,588
Total.....	3,558,235	4,223,461	2,741,659	42,807,653	53,098,793

COFFEE.

Imports of Coffee (Green) into the Dominion during the Last Five Fiscal Years Ending 30th June:—

Whence.	1881-82.	1880-81.	1879-80.	1878-79.	1877-78.
United States.....	Lbs. 524,013	Lbs. 530,849	Lbs. 607,066	Lbs. 1,172,696	Lbs. 193,477
Great Britain.....	355,421	419,004	517,828	263,086	1,525,170
France.....	39,832	1,408	45	175
Germany.....	27,968	10,013	3,329	3,300
Holland.....	197,372	163,742	210,995	73,671	19,054
British West Indies....	228,753	278,948	237,001	73,678	96,205
Spanish West Indies....	97,834	33,648	62,346	22,773	20,100
Other West Indies.....	11,345	150	8,459
Venezuela, Cent. America and Mexico.....	74,868	88,178	108,807	26,566
Brazil.....	1,164,535	410,134	179,010
British East Indies.....	85,384	41,389
Dutch East Indies.....	26,666	53,792	145,296
Spanish Possessions in Pacific.....	32,662
Other countries.....	9,285	1,084	36,020	3,194	2,944
Total.....	2,757,892	2,108,846	2,107,743	1,635,814	1,905,273

TEAS.

Imports of Teas into the Dominion for the Last Five Fiscal Years:—

WHEREFROM	1881-82.		1880-81.		1879-80.		1878-79.		1877-78.	
	lbs.		lbs.		lbs.		lbs.		lbs.	
Great Britain ..	{ Green	1,734,930	{ Green	1,113,983	{ Green	1,112,411	{ Green	1,320,579	{ Green	1,254,154
	{ Black	4,897,095	{ Black	5,951,176	{ Black	4,255,262	{ Black	3,547,927	{ Black	3,426,536
	Aggregate..	6,632,025	Aggregate..	7,065,159	Aggregate..	5,367,673	Aggregate..	4,868,506	Aggregate..	4,680,690
United States..	{ Green	3,465,289	{ Green	4,778,025	{ Green	2,240,888	{ Green	4,758,785	{ Green	4,144,872
	{ Black	433,234	{ Black	560,097	{ Black	751,367	{ Black	1,184,152	{ Black	1,666,094
	Aggregate..	3,898,523	Aggregate..	5,338,122	Aggregate..	2,992,255	Aggregate..	5,941,937	Aggregate..	5,810,966
China.....	{ Green	891,787	{ Green	1,190,735	{ Green	859,819	{ Green	312,248	{ Green	129,450
	{ Black	830,384	{ Black	978,049	{ Black	538,835	{ Black	218,250	{ Black	355,062
	Aggregate..	1,732,171	Aggregate..	2,168,784	Aggregate..	1,398,654	Aggregate..	530,498	Aggregate..	484,542
Japan	{ Green	4,643,386	{ Green	4,747,769	{ Green	3,615,601	{ Green	1,225,508	{ Green	1,101,928
	{ Black	71,538	{ Black	32,926	{ Black	13,887	{ Black	30	{ Black	40
	Aggregate..	4,714,974	Aggregate..	4,780,695	Aggregate..	3,629,488	Aggregate..	1,225,538	Aggregate..	1,101,968
Other Countries	{ Green	60	{ Green	76,875	{ Green	11,110	{ Green	{ Green
	{ Black	33,263	{ Black	2,801	{ Black	1,037	{ Black	732	{ Black	7,795
	Aggregate..	33,323	Aggregate..	79,676	Aggregate..	12,147	Aggregate..	732	Aggregate..	7,795
Total	{ Green	10,735,452	{ Green	11,907,387	{ Green	7,839,829	{ Green	7,617,120	{ Green	6,630,434
	{ Black	6,275,564	{ Black	7,525,049	{ Black	6,560,388	{ Black	4,951,091	{ Black	5,455,527
Grand Total		17,011,016		19,432,436		13,400,217		12,568,211		12,085,961

DISTILLED AND FERMENTED LIQUORS.

From an OFFICIAL STATEMENT showing Quantities, Values, &c., of Spirits and Fermented Liquors and Wines of all kinds, imported into the Dominion during fifteen years.

Year.	IMPORTED.			ENTERED FOR HOME CONSUMPTION.			Duty.
	Quantity.	Quantity.	Value.	Quantity.	Quantity.	Value.	
	Dozens.	Imp. Galls.	\$	Dozens.	Imp. Galls.	\$	
1868.....	8,744	2,130,646	1,765,861	7,163	1,964,130	1,698,211	1,307,403
1869.....	1,825,248	1,513,064	1,460,023	1,181,849	970,592
1870.....	2,171,591	1,657,753	1,691,944	1,369,307	1,099,700
1871.....	2,520,895	2,055,688	1,938,446	1,496,431	1,257,164
1872.....	2,958,188	2,609,708	2,406,469	1,995,437	1,580,186
1873.....	2,863,166	2,512,106	2,475,373	2,142,619	1,582,142
1874.....	20,048	2,627,587	2,470,451	7,267	2,849,946	2,374,601	1,922,349
1875.....	27,535	2,386,106	2,278,276	21,419	1,916,757	1,831,095	1,629,346
1876.....	20,566	1,776,695	1,515,899	25,741	2,209,884	2,087,635	1,895,157
1877.....	24,035	1,663,442	1,498,040	22,070	1,448,274	1,368,619	1,356,884
1878.....	21,998	1,657,875	1,507,223	20,042	1,463,406	1,370,762	1,244,289
1879.....	13,715	1,316,758	1,280,200	17,574	1,559,910	1,519,702	1,395,098
1880.....	13,384	1,522,325	1,375,735	12,072	1,450,099	1,352,092	1,444,416
1881.....	13,555	1,971,127	1,858,576	10,557	1,672,580	1,662,435	1,656,718
1882.....	25,409	1,965,984	1,867,732	19,483	1,666,173	1,667,008	1,661,900
Totals...	189,019	31,357,633	27,766,308	163,398	28,173,414	25,067,803	22,003,350

STATEMENT of Spirits and Malt Liquor manufactured and entered for consumption, and showing the quantity of Grain and other substances used in the production thereof, from 1868 to 1882, both years inclusive.

Year	SPIRITS.					MALT LIQUOR.					
	Grain used.	Molasses.	Sugar, &c.	Manufactured.	Amount of Duty.	Entered for Consump'n.	Duty Collected.	Malt used.	Sugar & other Substances.	Malt Liquor Produced.	Duty Collected.
	Lbs.	Gallons.	Lbs.	Imp. Gall.	\$	Imp. Gall.	\$	Lbs.	Lbs.	Imp. Gall.	\$
1868	67,685,511	3,400,040	2,473,221	3,203,830	2,309,592	22,681,749	380,787	6,194,738	116,297
1869	62,359,505	1,085	3,151,695	2,382,680	2,341,251	1,769,971	21,915,137	174,449	6,336,290	13,732
1870	68,901,557	12,364	2,902,823	2,195,289	3,175,857	2,400,866	20,463,338	147,352	6,075,451	10,280
1871	86,788,405	23,609	4,419,311	3,341,306	3,516,042	2,656,274	23,707,258	21,654	7,047,560	2,127
1882	79,324,558	16,042	2,006,050	4,058,605	3,068,305	3,808,292	2,879,067	26,108,073	285,328	7,964,441	18,173
1873	91,452,558	5,502	4,622,932	3,494,935	3,732,844	2,820,641	30,309,789	Bh. corn 349 282,375	9,217,102	19,248
1874	87,539,173	4,520	102,398	4,528,118	3,595,998	4,566,509	3,498,989	28,685,003	Bh. corn 343 194,761	8,970,268	17,420
1875	90,094,381	8,642	14,992	4,682,924	4,214,629	3,303,302	2,972,972	30,377,039	215,004	9,653,525	21,976
1876	59,472,129	3,111,346	2,800,211	3,441,125	3,097,018	27,860,256	68,560	9,319,190	6,363
1877	68,498,295	3,546,877	3,192,190	2,942,338	2,648,101	27,471,707	9,115,258
1878	67,594,902	3,530,085	3,177,076	3,007,870	2,747,085	25,180,327	8,578,075	11
1879	66,749,856	3,664,131	3,438,253	3,646,255	3,205,880	25,456,803	2,410	8,848,208	565
1880	53,394,258	8,201	2,413	2,296,987	2,987,094	2,290,366	2,290,349	26,419,244	450	9,201,213	160
1881	53,667,108	502	9,674	3,018,145	3,045,425	3,214,541	3,228,608	28,395,987	9,931,176
1882	70,402,810	4,028,847	4,029,067	3,552,818	3,552,990	34,775,986	12,036,979
	1,063,925,086	74,965	2,201,029	54,993,866	47,445,679	49,743,240	42,130,423	399,927,788	1,785,819 Bh. corn 692	138,495,494	226,352

NOTE.—In addition to the duty collected on Malt Liquor, there is a duty of one cent per pound collected on the Malt used, and a duty of two cents from 20th February, 1877, to 14th March, 1879.

VII.—COAL TRADE OF THE DOMINION, 1882.

QUANTITIES OF COAL IMPORTED.

The following table shows the quantities of Coal imported into Canada during six years:—

FISCAL YEARS.	FROM GREAT BRITAIN.		FROM UNITED STATES.		TOTALS.	
	Bitum'ous.	Anthracite	Bitum'ous.	Anthracite	Bitum'ous.	Anthracite
1877 tons	160,175	4,111	353,795	415,869	513,970	420,010
1878 "	124,614	2,582	331,323	404,389	456,090	406,971
1879 "	93,666	701	379,651	415,722	473,317	416,423
1880 "	123,322	168	333,727	516,561	457,049	516,729
1881 "	129,428	6,395	457,595	565,697	587,024	572,092
1882 "	95,284	839	540,792	637,434	636,374	638,273

A return made by the Customs Department to an order of the House of Commons at last session, shows that 196,905 tons, and 171,206 tons of Coal, respectively, were exported from Nova Scotia during the fiscal year ended 30th June, 1882, and for the six months ended 31st December, 1882, to the following countries:—

	Fiscal year ended 30th June, 1882.	Six months ended 31st Dec., 1882.
* Great Britain	6,112 tons.	1,673 tons.
United States	105,943 "	86,428 "
Newfoundland	57,004 "	60,235 "
* British West Indies	753 "	282 "
Spanish West Indies	18,885 "	13,864 "
* French West Indies	402 "	286 "
Saint Pierre Miquelon	4,381 "	3,613 "
* France	300 "	250 "
* Germany	410 "	1,500 "
* Holland "	200 "
* Russia	250 "	250 "
British Guiana	1,625 " "
* Brazil	300 "	159 "
Mexico	540 "	2,466 "
Total	196,905	171,206

A note to the return states that the Department has no means of knowing the quantities sent by railway and by water to any ports of Quebec and Ontario. An asterisk (*) is prefixed to names of countries mentioned in the list, to indicate that, perhaps, what are designated as exports consisted mostly of bunker-coal, supplied to steamers which called at Nova Scotia ports on the trip.

The year's business proved to be the largest in the history of the trade, both for domestic and foreign Coal, viz. :—

Total imports for fiscal year	1,274,647 tons.
Total Provincial sales to 31st December	1,250,179 "
	<hr/>
Together	2,524,826

or 792,926 tons more than the total consumption of 1879.

The imports of foreign Coal by the River St. Lawrence were on a smaller scale than usual, owing to the demand for freight-room for Steel Rails and other heavy merchandise, and also because of a falling off in timber vessels seeking cargoes at Quebec. Fortunately the Nova Scotia collieries were enabled to improve their facilities, to meet increasing demands, and supplied the deficiency at very moderate rates. Higher rates of freight had, however, to be submitted to; because, owing to scarcity of sailing tonnage, chartered steamers had to be employed. The average advance was 25c. per ton.

The great bulk of imports of foreign Coal was from the United States, rather more than one-half being Anthracite. *Bituminous Coal* was imported into Ontario, during 1882, at lower rates than ever before; and railway contracts for 1883, deliverable at Suspension Bridge, and as far east as Brockville, were made at greatly reduced figures, compared with those of former years. *Anthracite* was held firmly during the year, on account of a combination among miners and shippers, prices advancing towards autumn.

The export trade from Nova Scotia does not increase; the principal market is the United States, and the duty there of 75c. per ton is almost prohibitory, United States Bituminous Coal being placed in all seaboard ports at very low rates. The recent tariff changes in that country have been met by large reductions in price in favor of foreign ships for bunker purposes.

The local markets of Nova Scotia are rapidly increasing their consumption, owing to the establishment of various industries, such as Iron and Steel Works, Sugar Refineries, Cotton Mills, Glass Works, and sundry smaller manufactories.

The total sales in Nova Scotia, during 1882, were from the following localities :—

Cumberland County.....	218,349 tons.
Pictou County	446,137 "
Cape Breton	585,693 "
	<hr/>
Total	1,250,179

against a total of 688,624 tons in 1879.

The distribution of the sales during the past two years was as follows:—

	1882.	1881.
Nova Scotia	458,952 tons.	382,413 tons.
Quebec and Ontario.....	383,031 "	268,628 "
New Brunswick	153,617 "	123,526 "
Newfoundland	79,732 "	62,174 "
Prince Edward Island.....	50,096 "	49,313 "
United States	99,302 "	113,728 "
West Indies	22,386 "	21,620 "
South America	1,462 "	561 "
Europe	1,601 "	13,051 "
	<hr/>	<hr/>
	1,250,179	1,035,014

The consumption of Coal by the Intercolonial Railway amounted to 95,648 tons in 1881, and to 127,196 tons in 1882.

The Coal Fields of British Columbia are being worked extensively; but, at present, the principal amount raised is shipped to San Francisco.

Of course, very little has been done yet towards working the Coal Fields of North-West.

CONSUMPTION OF COAL IN MONTREAL.

The total importation of Bituminous Coal into Montreal, by water, during 1882, was a little over 300,000 tons. Of that quantity less than 30,000 tons came from Great Britain; while 33,926 tons were brought over the Grand Trunk Railway, from Chaudiere Junction direct from the Nova Scotia mines. Of this quantity, more than one-half was for consumption in this city.

The imports of Anthracite Coal at Montreal, during 1882, were:—

Via Chambly Canal.....	63,000 tons.
Via River St. Lawrence	93,000 "
	<hr/>
Total in 1882.....	156,000 "
Imported in 1881	152,000 "
Imported in 1880	116,000 "

VIII.—THE CANADIAN LUMBER TRADE.

TIMBER, DEALS, PLANKS, AND BOARDS EXPORTED.

Table showing, by countries, the value of Exports of the products of the Forest, the growth of the Dominion, with totals for the last thirteen years.

Fiscal year ended 30th June.	Great Britain.	United States.	West Indies and South America.	Other Countries.	TOTAL VALUE.
	\$	\$	\$	\$	\$
1882	11,349,866	10,192,933	935,471	1,512,785	23,991,055
1881	14,758,890	8,349,844	609,609	1,242,269	24,960,269
1880	8,673,336	6,532,418	829,467	819,286	16,854,507
1879	7,328,313	4,231,484	911,209	790,453	13,261,459
1878	13,271,372	4,481,053	749,597	1,009,553	19,511,575
1877	16,737,568	4,522,508	909,315	840,858	23,010,249
1876	14,031,591	4,973,354	911,074	421,450	20,337,469
1875	16,304,045	6,355,902	1,274,637	847,196	24,781,780
1874	14,928,403	9,654,890	1,835,333	399,089	20,817,715
1873	13,749,755	12,498,417	2,338,644	28,586,816
1872	23,685,382
1871	22,352,211
1870	20,940,434

Table showing the quantity and value of Exports of the products of the Forest, the growth of the Dominion, distinguishing between Deals, Planks, Boards and Joists, Square Timber, &c., with the countries to which exported, for fiscal year ended 30th June, 1882, with totals for previous twelve years :—

Countries to which Exported.	DEALS.		PLANKS, BOARDS & JOISTS.		SQUARE TIMBER.		OTHER.
	Quantity.	Value.	Quantity.	Value.	Quantity.	Value.	Value.
	St. Hd.	\$	M. Feet.	\$	Tons.	\$	\$
Gt. Britain.	220,216	6,635,582	18,788	258,180	292,531	3,591,627	864,477
U. States...	1,975	83,783	602,821	7,097,938	17,031	52,686	2,958,526
West India & S. Amerca	4,659	254,069	46,058	549,373	150	550	131,479
Other Co'nt.	36,744	972,067	32,110	362,371	4,474	61,053	117,294
Total 1882.	263,594	7,945,501	699,777	8,267,862	314,186	3,705,916	4,071,776
" 1881.	260,305	8,676,768	652,261	7,101,532	523,440	5,903,306	3,278,663
" 1880.	213,613	5,775,634	681,202	5,880,281	269,204	2,425,882	2,772,710
" 1879.	210,411	5,243,619	446,026	4,119,196	209,511	1,927,887	2,736,047
" 1878.	264,465	7,921,281	437,900	4,375,152	364,167	4,714,515	2,500,627
" 1877.	270,284	8,497,042	425,220	4,513,407	651,192	7,066,158	2,933,642
" 1876.	236,318	8,076,214	421,664	4,647,470	467,012	5,024,755	2,379,625
" 1875.	219,921	8,726,623	579,686	6,224,781	571,112	6,658,620	3,171,756
" 1874.	340,333	8,171,223	911,794	9,221,141	448,631	5,488,353	3,936,998
" 1873.	264,861	6,372,615	901,734	11,357,099	567,375	6,216,128	4,640,974
" 1872.	184,536	5,341,580	882,001	8,527,249	628,765	6,309,912	3,506,641
" 1871.	148,096	5,021,762	829,550	8,355,874	568,806	5,628,630	3,345,945
" 1870.	169,988	5,143,697	846,882	8,256,599	565,537	4,525,595	3,014,543

LUMBER TRADE OF THE OTTAWA VALLEY.

Estimated cut of logs for Saw Mills at Ottawa, and vicinity, during winter 1882-83:—

<i>Ottawa—</i>	Feet Board measure.
Gilmour & Co., Water-power	25,000,000
Do Steam "	20,000,000
J. MacLaren & Co., water power	10,000,000
McClymont & Co., " "	10,000,000
<i>Hull—</i>	
E. B. Eddy " "	35,000,000
Sherman, Lord, } & Hurdmans, }	15,000,000
J. R. Booth, " "	40,000,000
Pattee & Perley " "	32,000,000
Bronson & Westons " "	25,000,000
Capt. Young (Estate of) water power	12,000,000
John Rochester, steam power	5,000,000
Mason Bros. " "	2,000,000
<i>Aylmer—</i>	
Conroy Bros., water power	12,000,000
<i>Nepean—</i>	
Allan Grant	10,000,000
<i>(Capacity, 20,000,000.)</i>	
<i>Arnprior—</i>	
McLachlin Bros., steam power	30,000,000
<i>Braeside—</i>	
Gillies Bros., steam power	18,000,000
Hilliard & Dickson, water power	5,000,000
<i>Carleton Place—</i>	
Peter McLaren, water and steam power	25,000,000
Boyd Caldwell, steam power	10,000,000
<i>Buckingham—</i>	
Jas. MacLaren & Co., water power	20,000,000
John Ross & Co., " "	15,000,000
<i>Rockland—</i>	
W. C. Edwards & Co., steam power	25,000,000
<i>North Nation—</i>	
John A. Cameron	18,000,000
Total feet B. M.	<u>419,000,000</u>

This estimate is on the basis of five (5) Standard Logs to each 1000 feet, board measure. An estimate for the season, 1881-82, showed 10,000,000 feet less (409,000,000 feet). The difference, however, was practically much greater;

because the low water in creeks and rivers prevented considerable quantities of logs and square timber from getting forward; and all that was stuck of that season's cut, had to be left to come down with the cut of last Winter, 1882-83. It is a little too early yet to determine whether *all* the logs from the Upper Ottawa will get down this year; in the meantime, however, there is no lack of water, and the best use will be made of that facility.

The estimated cwt. of Square Timber in the season, 1881-82 was:—

Square White Pine.....	7,347,000 cubic feet.		
Board Timber	626,000 " "		
		7,973,000	" "
Stuck in 1881—			
Square Timber	731,000		
Board "	138,000		
		869,000	" "
Total White Pine			
	8,842,000	" "	
Square Red Pine.....	1,025,000 " "		
Stuck in 1881	88,000 " "		
Total Red Pine			
	1,113,000	" "	

The Secretary did not procure an estimate of the cut of Square Timber for the season 1882-83, in time for this part of Report. The cut, however, according to the foregoing estimate for manufacture into Lumber, would amount to 83,800,000 logs.

While the increasing demands of commerce are causing the timber forests of Canada to be cut down at a sweeping rate year after year, no protection from fire is enforced by the Government,—there has been but a feeble cry raised for the conservation of the forest-patrimony of the Dominion,—there is no planting, and no protection for young trees. Unless this record is speedily reversed, future generations will have good reason to blame their progenitors for their imprudent, even prodigal, mismanagement.

The following prices with the tables giving a comparative statement of the supply, export, and stock of Timber, &c., at Quebec for a number of years, is collated from the annual circular of Messrs. J. Bell Forsyth & Co. :—

PRICES.

WHITE PINE, in the Raft, for interior and ordinary according to average, quality, &c.,	\$	c.	\$	c.
measured off.....	0	20	0	24
for Fair average quality, according to average, &c., measured off.....	0	24	"	27
for Good and Good Fair average, according to average, &c., measured off..	0	27	"	32
for Superior, do do &c. do	0	32	"	36
In Shipping Order, do do &c.	0	24	"	40
Waney Board, 18 to 19 inch, do do &c.	0	35	"	37
do 19 to 21 inch, do do &c.	0	37	"	40
RED PINE, in the raft, measured off, according to average and quality.....	0	13	"	18
in Shipping Order, 35 to 40 feet, do do	0	20	"	24

**COMPARATIVE STATEMENT OF THE SUPPLY, EXPORT, AND STOCK OF
LUMBER,**

To the 1st December, for the years 1878, 1879, 1880, 1881, and 1882, respectively,—with
averages for the same period, and for five years preceding.

ARTICLES.	SUPPLY.					Average of 5 years' Supply.	
	From Returns from Supervisor and others, for year ending 1st December.					1873 to 1877	1873 to 1882
	1878	1879	1880	1881	1882		
TIMBER.							
Oak..... Feet	1,516,223	835,993	1,790,236	2,094,477	1,316,719	3,622,794	1,690,730
Elm..... do	177,653	336,461	937,283	1,027,670	714,549	1,273,385	638,723
Ash..... do	40,595	17,161	245,480	408,798	310,769	446,257	204,561
Birch..... do	198,811	121,095	574,314	110,488	251,920	522,260	251,326
Tamarac..... do	29,306	6,691	30,889	27,150	51,975	192,329	29,202
White Pine—							
Square..... do	7,917,756	2,510,762	4,244,285	6,029,041	8,053,086	11,579,249	5,750,986
Waney..... do	1,346,040	1,599,635	2,235,500	3,065,274	3,127,129	2,863,720	2,374,896
Red Pine..... do	1,359,756	741,499	1,056,167	1,945,720	1,474,871	2,006,794	1,315,602
STAVES.							
Standard..... Mille	300	180	196	418	565	1,433	332
Punchoon..... do	564	169	488	671	1,430	2,164	694
Barrel..... do			11		86	21	19
DEALS.							
Pine..... Standard	3,946,751	3,007,573	5,320,000	4,252,255	4,611,875	5,700,102	4,227,697
Spruce..... do	3,276,052	2,474,865	3,500,000	1,590,487	3,230,960	2,614,033	2,816,273
LATHWOOD.							
Red Pine and } Cords Hemlock.. }	1,535	104	106	870	164	925	556

ARTICLES.	EXPORT.					Average of 5 years' Export.	
	From Customs' Returns for year ending 1st December.					1873 to 1877	1873 to 1882
	1878	1879	1880	1881	1882		
TIMBER.							
Oak..... Feet	1,677,360	1,681,000	2,316,840	1,883,360	1,957,320	3,120,440	1,903,176
Elm..... do	559,760	544,040	1,041,800	797,160	773,360	902,364	744,224
Ash..... do	139,880	172,480	293,520	355,680	297,040	300,088	251,730
Birch..... do	202,760	196,480	558,840	273,880	213,680	540,024	289,128
Tamarac..... do	1,040					2,128	208
White Pine—							
Square..... do	8,149,120	5,300,440	11,552,560	9,101,880	7,912,160	12,594,912	8,403,232
Waney..... do							
Red Pine..... do	1,249,840	813,800	1,433,200	922,000	1,024,680	1,542,616	1,088,704
STAVES.							
Standard..... Mille	598	660	392	480	450	1,324	516
Punchoon..... do	1,152	943	921	602	850	2,081	874
Barrel..... do							
DEALS.							
Pine..... Standard	3,692,996	4,202,210	5,823,263	3,876,187	3,148,688	5,082,745	4,148,670
Spruce..... do	2,899,661	2,852,500	3,200,130	3,097,342	2,787,309	2,193,577	2,905,388
LATHWOOD.							
Red Pine and } Cords Hemlock.. }	1,332	595	628	584	329	1,502	694

ARTICLES.	TOTAL STOCK. INCLUDING MERCHANTABLE AND CULLS, On the 1st December.					Average of 5 years' Stock.	
	1878	1879	1880	1881	1882	1873 to 1877	1878 to 1882
	TIMBER.						
Oak..... Feet	2,078,498	1,149,200	656,026	1,916,622	1,362,153	2,630,364	1,432,499
Elm..... do	652,747	331,536	237,610	499,912	530,611	1,238,502	450,433
Ash..... do	450,612	265,840	136,317	210,101	212,422	563,922	255,058
Birch..... do	116,195	31,629	178,693	51,092	78,413	211,396	90,804
Tamarac..... do	159,931	85,727	112,991	30,664	8,598	168,396	79,582
White Pine—							
Square..... do	15,115,563	12,139,523	6,197,318	4,526,102	6,532,152	11,138,630	8,901,732
Waney..... do	3,189,720	2,217,888	797,346	1,519,950	3,354,943	3,305,778	2,213,906
Red Pine..... do	1,723,760	1,669,395	1,372,572	2,145,833	2,362,624	2,428,960	1,854,837
STAVES.							
Standard..... Mile	948	405	206	226	293	1,545	415
Puncheon..... do	1,363	770	271	230	1,007	4,317	738
Barrel..... do	2	1	12	10	53	59	16
DEALS.							
Pine..... Standard	4,028,052	2,233,406	1,626,158	1,708,597	2,507,704	3,786,888	2,420,783
Spruce..... do	1,310,209	682,634	515,110	810,028	1,012,920	1,303,327	866,192
LATHWOOD.							
Red Pine and } Hemlock } Cords	689	174	90	164	45	456	232

IX.—THE TRADE IN BREADSTUFFS.

Imports and Exports of Grain, Flour and Meal during the last six fiscal years.

IMPORTS.	1881-82.	1880-81.	1879-80.	1878-79.	1877-78.	1876-77.
Maize..... bush.	3,918,031	7,454,892	6,377,387	7,617,421	7,387,507	8,260,079
Wheat..... "	2,931,220	7,339,689	7,521,594	4,768,733	5,635,411	4,589,051
Other Grain.... "	87,706	105,970	214,237	2,190,382	2,621,581	2,142,487
Flour..... brls.	200,716	236,433	113,035	315,044	316,403	549,063
Meal..... "	134,490	179,263	173,896	175,172	231,470	302,614
Totals..... bush.	9,283,787	16,983,076	15,547,873	17,321,702	18,416,379	19,311,052
EXPORTS.						
Barley..... bush.	11,588,446	8,811,278	7,241,379	5,393,212	7,543,342	6,587,180
Maize..... "	2,229,900	5,257,604	4,547,942	5,429,359	3,987,600	4,083,174
Oats..... "	4,148,865	2,926,531	4,742,028	2,514,598	2,430,841	3,996,156
Peas..... "	3,521,496	4,245,590	3,819,412	2,715,252	2,420,049	1,753,439
Rye..... "	1,281,678	870,296	970,463	641,694	452,420	95,065
Wheat..... "	6,433,533	9,092,279	12,169,493	9,767,555	8,509,243	3,559,095
Other Grain.... "	187,760	2,887	15,488	5,439	5,920	3,928
Flour..... brls.	508,120	501,455	561,484	580,776	479,245	276,439
Meal..... "	54,520	56,541	115,602	104,979	177,002	35,509
Totals..... bush.	32,477,478	34,379,150	37,429,227	30,406,464	29,580,024	21,917,926

GENERAL SUMMARY OF THE CANADIAN WHEAT AND FLOUR TRADE.

TABLE shewing Wheat and Flour of Wheat Imports into and Exports from the Dominion, also estimated Home Production, and Surplus Exported during past ten Fiscal Years, ending 30th June.

Fiscal years, ending 30th June.	IMPORTS.			Home Production (estimated)		PRODUCE OF CANADA.				NOT PRODUCE OF CANADA.		Total Produce and Not Produce.	Deficit of Exports from Imports.	Surplus of Exports over Imports.
	Wheat bush.	Flour brls.	Total bush.	Wheat bush.	Flour brls.	Wheat bush.	Flour brls.	Total bush.	Wheat bush.	Flour brls.	Total bush.			
1872-73.	5,821,300	273,265	7,187,715	21,702,286	20,045,763	4,379,741	474,202	6,750,751	2,025,082	9,511	2,078,487	8,854,238	1,680,623	
1873-74.	8,405,010	288,056	9,845,896	25,487,776	20,550,008	6,581,217	540,317	9,282,802	5,420,842	14,094	5,409,942	14,782,704	4,890,868	
1874-75.	6,105,168	407,780	7,444,088	21,640,760	20,686,390	4,588,022	302,783	5,896,937	2,670,522	6,189	2,701,512	5,698,449	1,184,561	
1875-76.	6,883,150	376,114	7,713,726	24,074,163	21,044,819	6,070,393	415,504	8,147,013	3,177,997	4,482	3,200,167	11,348,070	3,629,944	
1876-77.	4,589,051	549,063	7,354,360	18,888,664	21,291,640	2,393,155	208,605	8,786,180	1,165,940	7,884	1,200,110	4,941,280	2,308,070	
1877-78.	6,685,411	814,620	7,208,011	25,501,955	21,814,498	4,393,535	476,431	6,705,680	4,115,708	2,814	4,129,778	10,896,468	3,687,457	
1878-79.	4,788,733	315,044	6,343,953	28,617,228	22,339,740	6,010,724	574,947	9,485,459	3,150,821	6,829	3,185,976	12,671,435	6,827,482	
1879-80.	7,521,694	118,035	8,086,769	29,586,103	22,695,959	6,090,505	544,591	7,813,460	7,078,988	16,808	7,185,453	14,976,913	6,890,144	
1880-81.	7,839,089	298,484	8,521,854	25,830,827	22,859,137	2,623,673	430,723	4,722,313	6,668,606	61,727	6,877,231	11,599,544	8,077,680	
1881-82.	2,931,220	200,710	3,934,900	27,990,552	22,957,219	3,845,035	469,739	6,103,730	2,888,498	39,391	2,790,403	8,974,133	5,039,533	

An item of interest may be found in the estimate of the annual Wheat crop given in the above table; comparison with the Census figures for 1881 (which being taken in April presumably represent the previous crop, 1880,) show a wide divergence, the Census giving the crop as 32,350,269 bush, while it is estimated above as 25,936,827 bush. Whatever value the foregoing estimates may have, is of course derived from the approximate correctness of the figures, and of the hypotheses upon which they are calculated. It is therefore well to explain. The figures of Imports and Exports are from the Trade and Navigation Returns for years ending June 30th, which may be assumed as crop years, Flour is reduced to grain at 5 bush. per brl. Home consumption includes 5 bush. per annum per head of population, and a reserve of 5 per cent. for seed purposes. Actual observation and enquiries show this to be a liberal allowance. The Report of the Bureau of Industries for Ontario for 1882, placed the consumption for food and seed together at 4.70 bush. per head, with the remark that this is slightly below the English average. The population is taken from the Census for 1871 and 1881, which indicates an annual increase of 1 1/2 per cent. To the quantity under the head of Home Consumption is added the Surplus of Exports over Imports [except in 1876-77 the Exports falling below the Imports, the deficit is deducted.] the result being the estimated yield. It is not generally considered that any very great quantity of one crop is held over to the following, and any such would be more or less balanced by quantity held over from previous year, and in any case the estimate of an average crop would not be affected.

X.—TRADE IN DAIRY PRODUCE.

The figures in the following table show exportations of Butter during a period of thirteen fiscal years, ending 30th June.

YEARS.	PRODUCT OF CANADA.		NOT PRODUCT OF CANADA		TOTAL.		Average Val. per lb. Can. Prod.
	Quantity. lbs.	Value. \$	Quantity. lbs.	Value. \$	Quantity. lbs.	Value. \$	
1870	12,259,887	2,353,370	12,259,887	2,353,370
1871	15,439,266	3,065,229	15,439,266	3,065,229
1872	19,068,448	3,612,679	19,068,448	3,612,679
1873	15,208,633	2,808,979	7,710	1,546	15,216,343	2,810,525	18½ c.
1874	12,233,046	2,620,305	2,843	713	12,235,889	2,621,018	21½ c.
1875	9,268,044	2,337,324	62,726	12,803	9,330,770	2,350,127	25½ c.
1876	12,250,066	2,540,894	142,301	38,537	12,392,367	2,579,431	20½ c.
1877	14,691,789	3,073,409	787,761	151,572	15,479,550	3,224,981	20½ c.
1878	13,006,626	2,382,237	497,491	1,960	13,504,117	2,447,197	18½ c.
1879	14,307,977	2,101,897	228,265	36,550	14,536,242	2,138,447	14½ c.
1880	18,535,362	3,058,069	352,341	61,093	18,887,703	3,119,162	16½ c.
1881	17,649,491	3,573,034	170,787	38,854	17,820,278	3,611,888	20½ c.
1882	15,161,839	2,936,156	176,649	39,014	15,338,488	2,975,170	19½ c.

The figures in the following table show exportations of Cheese during a period of thirteen fiscal years, ending 30th June.

YEARS.	PRODUCT OF CANADA.		NOT PRODUCT OF CANADA		TOTAL.		Average Val. per lb. Can. Prod.
	Quantity. lbs.	Value. \$	Quantity. lbs.	Value. \$	Quantity. lbs.	Value. \$	
1870	5,827,782	674,486	5,827,782	674,486
1871	8,271,439	1,109,906	8,271,439	1,109,906
1872	16,424,025	1,840,284	16,424,025	1,840,284
1873	19,483,211	2,280,412	24,072	2,832	19,507,283	2,283,244	11½ c.
1874	24,050,982	3,523,201	298,820	33,354	24,349,802	3,556,555	14½ c.
1875	32,342,030	3,886,226	221,894	26,756	32,563,924	3,912,982	12 c.
1876	35,024,090	3,751,268	2,861,166	298,740	37,885,256	4,050,008	10½ c.
1877	35,930,524	3,748,575	1,770,397	149,393	37,700,921	3,897,968	10½ c.
1878	38,054,294	3,997,521	1,316,845	123,780	39,371,139	4,121,301	10½ c.
1879	46,414,035	3,790,300	3,202,380	244,450	49,616,415	4,034,750	8½ c.
1880	40,368,678	3,893,366	3,072,434	200,680	43,441,112	4,094,046	9½ c.
1881	49,255,523	5,510,443	5,475,497	581,091	54,713,020	6,091,534	11½ c.
1882	50,807,049	5,500,868	4,518,118	478,669	55,325,167	5,979,537	11 c.

The figures in the following table show the exportations of Eggs, the product of Canada, during a period of thirteen fiscal years.

YEARS.	DOZENS.	VALUE.	YEARS.	DOZENS.	VALUE.
1870.....	2,460,687	\$314,812	1877.....	5,025,953	\$534,891
1871.....	3,312,145	424,033	1878.....	5,268,170	647,144
1872.....	3,724,977	454,511	1879.....	5,440,828	574,095
1873.....	3,753,781	509,447	1880.....	6,452,580	740,665
1874.....	4,407,534	587,599	1881.....	9,090,135	1,103,812
1875.....	3,521,068	434,273	1882.....	10,499,082	1,643,709
1876.....	3,880,813	508,425			

The principal customers of Canada, for Butter, in 1882, were:—Great Britain, to the extent of 11,358,125 lbs.; United States, 2,711,977 lbs.; and Newfoundland, 1,038,119 lbs. Of Cheese, in 1882, 55,073,762 lbs. were shipped to Great Britain, and 156,024 lbs. to the United States. Of Eggs, Great Britain took 370,134 dozen, and the United States, 10,115,315 dozen.

XI.—THE CATTLE EXPORT TRADE.

STATEMENT showing the number and value of Live Stock imported into, [exclusive of Animals for improvement of Stock,] and exported from Canada during the past eight fiscal years ended 30th June.

IMPORTS.	Horses.		Horned Cattle.		Swine.		Sheep.		Total Value.
	No.	Value.	No.	Value.	No.	Value.	No.	Value.	
1874-5....	1,225	\$59,202	4,580	\$105,655	58,729	\$816,153	8,600	\$ 18,777	\$909,787
1875-6....	1,580	82,101	6,397	164,491	51,885	622,659	11,856	23,240	892,491
1876-7....	1,476	76,966	8,056	221,337	13,611	181,097	11,617	21,917	501,217
1877-8....	1,590	61,308	5,597	133,736	14,704	116,922	10,586	20,444	332,410
1878-9....	1,563	64,442	6,174	238,868	16,215	115,523	11,383	23,097	441,930
1879-80....	1,017	52,852	3,211	88,614	12,232	126,018	8,647	20,422	287,906
1880-1....	786	47,393	8,105	220,230	*2,447	19,953	8,308	17,952	305,528
1881-2....	2,521	185,145	8,939	233,720	2,035	21,967	10,034	25,729	466,561
EXPORTS.									
1874-5....	4,382	\$ 460,672	38,968	\$823,522	16,779	\$152,252	242,438	\$637,561	\$2,074,007
1875-6....	4,300	443,038	25,898	645,449	3,886	14,541	141,187	507,538	1,610,566
1876-7....	8,341	795,144	24,127	846,520	2,063	11,811	209,899	583,020	2,236,495
1877-8....	14,207	1,277,928	30,456	1,214,773	3,201	23,255	242,989	699,337	3,215,293
1878-9....	16,635	1,377,944	49,257	2,294,286	6,498	61,147	308,393	989,613	4,722,990
1879-80....	21,383	1,880,379	54,944	2,764,437	6,229	41,281	398,746	1,422,830	6,108,927
1880-1....	22,008	2,099,724	62,512	3,489,611	2,819	11,841	354,253	1,375,043	6,976,229
1881-2....	21,006	2,358,887	62,337	3,285,452	3,263	10,875	311,669	1,228,957	6,884,171

* The figures for 1879-80 and previous years, covered the number of Swine imported "to be slaughtered in bond for exportation," but in those for 1880-81, and following years, this item is omitted, the Customs returns giving the quantity by weight instead of number, the aggregate number of Swine imported cannot therefore be stated. The figures of Swine imported to be slaughtered in bond for exportation, are as follows:—

1880-81 -10,136,149 lbs. Value, \$535,172. 1881-82--6,041,960. Value, 403,844.

These tabular statements indicate the large increase in the supply of home-raised Cattle, the value of the imports of the year last given being less than seven per cent. of the value of the exports, which have increased over 300 per cent. during the last five years. The bulk of the export trade in 1881-82 was nearly equally divided between the United States and Great Britain; the figures for the former \$3,485,262, two-thirds of which was for horses; while Great Britain's share was \$3,233,723, horned Cattle forming nearly seven-eighths of the amount.

XII.—PERIODS OF CANAL NAVIGATION.

[This Table may be usefully examined in connection with the statements relating to Inland Communications, given on the foregoing pages 52 to 58 inclusive.]

STATEMENT SHEWING THE DATE OF THE OPENING AND CLOSING OF NAVIGATION ON THE CANALS, FROM 1858 TO 1892, INCLUSIVE.

Year.	LACHINE CANAL.			BEAUFORT CANAL.			CORNWALL CANAL.			WILMANSBURG CANALS.			WELLAND CANAL.		
	Opened.	Closed.	No. of days.	Opened.	Closed.	No. of days.	Opened.	Closed.	No. of days.	Opened.	Closed.	No. of days.	Opened.	Closed.	No. of days.
	1858.....	April 25	Dec. 1	221	April 26	Nov. 26	215	April 26	Dec. 7	226	April 25	Dec. 11	231	April 7	Dec. 7
1859.....	April 21	Nov. 30	224	April 19	Nov. 29	225	April 20	Dec. 7	232	April 30	Dec. 5	230	April 1	Dec. 8	252
1860.....	April 20	Dec. 5	230	April 19	Dec. 3	229	April 21	Dec. 10	234	April 21	Dec. 10	234	April 1	Dec. 6	260
1861.....	April 24	Dec. 4	225	April 24	Dec. 3	224	April 24	Dec. 12	233	April 24	Dec. 10	231	April 8	Dec. 12	249
1862.....	May 4	Dec. 6	216	April 30	Nov. 30	215	May 1	Dec. 12	226	April 29	Nov. 30	216	April 15	Dec. 15	244
1863.....	May 4	Dec. 10	220	May 2	Dec. 4	217	May 4	Dec. 12	222	May 1	Dec. 7	221	April 13	Dec. 13	244
1864.....	April 25	Dec. 10	229	April 24	Dec. 3	224	April 27	Dec. 10	237	April 26	Dec. 10	229	April 14	Dec. 11	242
1865.....	May 1	Dec. 12	226	April 25	Dec. 7	227	April 26	Dec. 13	231	April 29	Dec. 13	229	April 17	Dec. 15	242
1866.....	May 2	Dec. 13	226	April 30	Dec. 8	223	April 30	Dec. 13	237	May 1	Dec. 11	225	April 17	Dec. 11	238
1867.....	May 1	Dec. 2	216	April 29	Dec. 2	218	May 1	Dec. 1	215	May 1	Dec. 6	220	April 23	Dec. 7	239
1868.....	May 27	Dec. 5	223	April 27	Dec. 2	220	April 27	Dec. 8	228	April 26	Dec. 3	216	April 21	Dec. 10	233
1869.....	May 3	Dec. 7	218	May 3	Nov. 30	211	May 3	Dec. 7	218	May 1	Dec. 3	216	April 21	Dec. 10	233
1870.....	April 29	Dec. 10	225	April 28	Dec. 5	221	April 28	Dec. 8	224	April 23	Dec. 6	229	April 6	Dec. 9	247
1871.....	May 21	Dec. 6	226	April 19	Dec. 2	227	April 20	Dec. 8	232	April 21	Dec. 6	229	April 6	Dec. 10	233
1872.....	May 5	Dec. 4	218	May 1	Dec. 1	216	May 1	Dec. 8	221	May 1	Dec. 2	218	April 21	Dec. 15	239
1873.....	May 9	Nov. 24	209	May 1	Nov. 5	208	May 1	Dec. 4	218	May 1	Dec. 5	219	April 9	Dec. 10	246
1874.....	April 21	Dec. 4	228	May 3	Nov. 25	207	April 29	Dec. 4	230	May 4	Dec. 2	213	May 3	Dec. 14	228
1875.....	May 1	Dec. 1	215	May 3	Dec. 1	213	May 4	Dec. 6	217	May 1	Dec. 2	215	May 3	Dec. 11	239
1876.....	May 1	Dec. 2	216	May 1	Dec. 8	222	May 1	Dec. 8	222	May 1	Dec. 4	218	April 17	Dec. 11	239
1877.....	May 7	Dec. 1	209	May 6	Dec. 6	215	April 26	Dec. 8	237	May 1	Dec. 7	221	April 17	Dec. 11	239
1878.....	May 8	Dec. 5	213	April 24	Dec. 6	227	April 22	Dec. 8	231	April 29	Dec. 12	228	May 9	Dec. 14	220
1879.....	May 4	Dec. 4	215	May 1	Dec. 2	216	May 2	Dec. 9	222	April 20	Dec. 6	225	April 20	Dec. 5	218
1880.....	April 25	Nov. 27	217	April 20	Nov. 28	223	April 26	Dec. 6	235	April 20	Dec. 6	235	April 20	Dec. 5	218
1881.....	May 1	Dec. 1	215	April 25	Nov. 28	218	April 26	Dec. 10	239	April 27	Dec. 10	228	May 2	Dec. 15	228
1882.....	April 25	Dec. 1	231	April 25	Dec. 1	231	April 25	Dec. 6	236	April 25	Dec. 11	232	April 20	Dec. 5	230

XIII.—DIRECT TRADE WITH FOREIGN COUNTRIES.

GENERAL REMARKS.

An examination of the tabular statements on pp. 62 to 66 inclusive, will show, for a series of years, the extent and progress of the trade between Canada and Foreign Countries,—the tables on pp. 69, 70, indicating the change that has taken place with reference to a single staple product (Sugar) of the West Indies and Brazil. It would be interesting to go into more detail respecting the commerce of foreign countries with which the Dominion is entering upon more intimate relations; but so much space has already been occupied with the PRELIMINARY SUBJECTS, that further elaboration must be deferred.

Profitable development is looked forward to; and the Parliament of Canada has acted in a liberal spirit, by enabling the Government to make contracts with, and give subsidies to particular steamship lines, for service between the Dominion and certain ports of the Continent of Europe and of South America.

BRAZIL.—Some unforeseen difficulties have been encountered in connection with the line of steamships that was established a year or two ago for communication between Canada and Brazil, in consequence of which the service has been suspended for a little,—but to be immediately resumed under new auspices. A good deal of information has been given in former Reports of this series, relating to trade with the seaboard ports of Brazil. The Government of Canada has been liberal in its grants, and far from over-exacting in the terms of its contract. It would seem, however, that some of the conditions attached to the Brazilian subsidy, if strictly enforced at the beginning of the experiment that has been attempted, would hardly make the grant any help towards fostering the enterprise.

FRANCE.—A subsidy has been granted by Canada towards the running of a monthly line of steamships to and from a port in France, probably Havre. The contract, it is understood will be carried out by the parties interested in the revival of the line to Brazil.

GERMANY.—A subsidy has also been given for a monthly service between Canada and Germany, the port named being either Hamburg or Bremen. Steamships are to be placed on this line immediately.

BELGIUM.—Direct commercial relations between Canada and Belgium, which were entered upon a number of years ago, by a line of sailing vessels between Antwerp and the River St. Lawrence, have gone on steadily increasing, the enterprise having culminated in a monthly line of steamships, with the prospect of its expanding into fortnightly service. This Company (the "*White Cross Line*,") has also obtained a subsidy for monthly trips.

