

**CIHM  
Microfiche  
Series  
(Monographs)**

**ICMH  
Collection de  
microfiches  
(monographies)**



**Canadian Institute for Historical Microreproductions / Institut canadien de microreproductions historiques**

**© 1999**

This  
copy  
may  
have  
the  
sig  
che

This  
Ce

10

## Technical and Bibliographic Notes / Notes techniques et bibliographiques

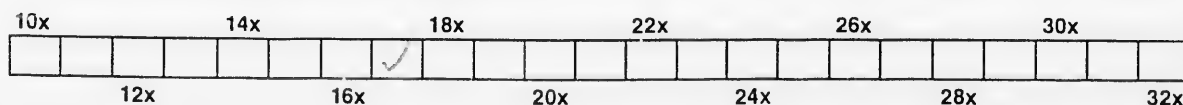
The Institute has attempted to obtain the best original copy available for filming. Features of this copy which may be bibliographically unique, which may alter any of the images in the reproduction, or which may significantly change the usual method of filming are checked below.

- Coloured covers / Couverture de couleur
- Covers damaged / Couverture endommagée
- Covers restored and/or laminated / Couverture restaurée et/ou pelliculée
- Cover title missing / Le titre de couverture manque
- Coloured maps / Cartes géographiques en couleur
- Coloured ink (i.e. other than blue or black) / Encre de couleur (i.e. autre que bleue ou noire)
- Coloured plates and/or illustrations / Planches et/ou illustrations en couleur
- Bound with other material / Relié avec d'autres documents
- Only edition available / Seule édition disponible
- Tight binding may cause shadows or distortion along interior margin / La reliure serrée peut causer de l'ombre ou de la distorsion le long de la marge intérieure.
- Blank leaves added during restorations may appear within the text. Whenever possible, these have been omitted from filming / Il se peut que certaines pages blanches ajoutées lors d'une restauration apparaissent dans le texte, mais, lorsque cela était possible, ces pages n'ont pas été filmées.
- Additional comments / Commentaires supplémentaires:

L'Institut a microfilmé le meilleur exemplaire qu'il lui a été possible de se procurer. Les détails de cet exemplaire qui sont peut-être uniques du point de vue bibliographique, qui peuvent modifier une image reproduite, ou qui peuvent exiger une modification dans la méthode normale de filmage sont indiqués ci-dessous.

- Coloured pages / Pages de couleur
- Pages damaged / Pages endommagées
- Pages restored and/or laminated / Pages restaurées et/ou pelliculées
- Pages discoloured, stained or foxed / Pages décolorées, tachetées ou piquées
- Pages detached / Pages détachées
- Showthrough / Transparence
- Quality of print varies / Qualité inégale de l'impression
- Includes supplementary material / Comprend du matériel supplémentaire
- Pages wholly or partially obscured by errata slips, tissues, etc., have been refilmed to ensure the best possible image / Les pages totalement ou partiellement obscurcies par un feuillet d'errata, une pelure, etc., ont été filmées à nouveau de façon à obtenir la meilleure image possible.
- Opposing pages with varying colouration or discolourations are filmed twice to ensure the best possible image / Les pages s'opposant ayant des colorations variables ou des décolorations sont filmées deux fois afin d'obtenir la meilleure image possible.

This item is filmed at the reduction ratio checked below /  
Ce document est filmé au taux de réduction indiqué ci-dessous.



The copy filmed here has been reproduced thanks to the generosity of:

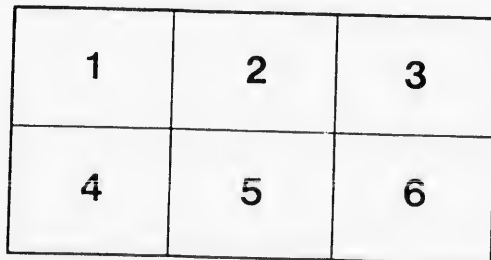
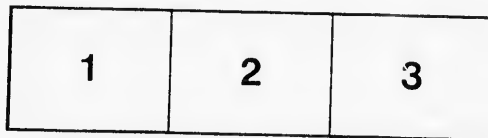
La Bibliothèque de la Ville de Montréal

The images appearing here are the best quality possible considering the condition and legibility of the original copy and in keeping with the filming contract specifications.

Original copies in printed paper covers are filmed beginning with the front cover and ending on the last page with a printed or illustrated impression, or the back cover when appropriate. All other original copies are filmed beginning on the first page with a printed or illustrated impression, and ending on the last page with a printed or illustrated impression.

The last recorded frame on each microfiche shall contain the symbol  $\rightarrow$  (meaning "CONTINUED"), or the symbol  $\nabla$  (meaning "END"), whichever applies.

Maps, plates, charts, etc., may be filmed at different reduction ratios. Those too large to be entirely included in one exposure are filmed beginning in the upper left hand corner, left to right and top to bottom, as many frames as required. The following diagrams illustrate the method:



L'exemplaire filmé fut reproduit grâce à la générosité de:

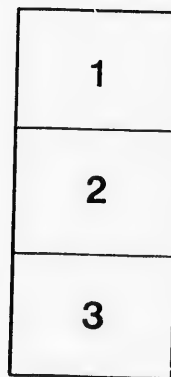
La Bibliothèque de la Ville de Montréal

Les images suivantes ont été reproduites avec le plus grand soin, compte tenu de la condition et de la netteté de l'exemplaire filmé, et en conformité avec les conditions du contrat de filmage.

Les exemplaires originaux dont la couverture en papier est imprimée sont filmés en commençant par le premier plat et en terminant soit par la dernière page qui comporte une empreinte d'impression ou d'illustration, soit par le second plat, selon le cas. Tous les autres exemplaires originaux sont filmés en commençant par la première page qui comporte une empreinte d'impression ou d'illustration et en terminant par la dernière page qui comporte une telle empreinte.

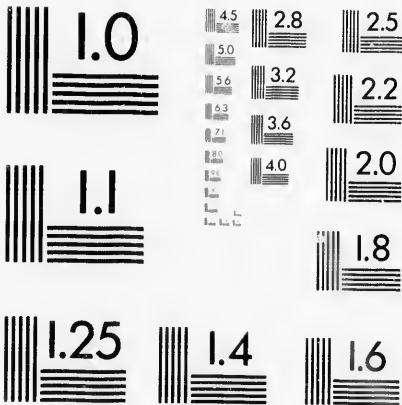
Un des symboles suivants apparaîtra sur la dernière image de chaque microfiche, selon le cas: le symbole  $\rightarrow$  signifie "A SUIVRE", le symbole  $\nabla$  signifie "FIN".

Les cartes, planches, tableaux, etc., peuvent être filmés à des taux de réduction différents. Lorsque le document est trop grand pour être reproduit en un seul cliché, il est filmé à partir de l'angle supérieur gauche, de gauche à droite, et de haut en bas, en prenant le nombre d'images nécessaire. Les diagrammes suivants illustrent la méthode.



# MICROCOPY RESOLUTION TEST CHART

(ANSI and ISO TEST CHART No. 2)



APPLIED IMAGE Inc

1653 East Main Street  
Rochester, New York 14609 USA  
(716) 482 - 0300 - Phone  
(716) 288 - 5989 - Fax

ZWL  
P 969

Winfield Mass  
1890

ENV. 536

G 34751

A CLASSIFIED LIST  
OF  
FOSSILS MINERALS AND INDIAN RELICS  
FROM  
*THE COLLECTION* V  
of  
J. PROVOST.

*Number of specimens.*

|    |                           |     |
|----|---------------------------|-----|
| 1  | Calymmene Senaria         | 200 |
| 2  | Acidaspis Cincinnatiensis | 1   |
| 3  | Asaphus Gigas             | 3   |
| 4  | Asaphus Megistos          | 10  |
| 5  | Ceraurus Icarus rare      | 1   |
| 6  | Triarthrus Becki          | 1   |
| 7  | Triarthrus Spinosus       | 1   |
| 8  | Trinucleus Concentricus   | 1   |
| 9  | Calymmene Niagarensis     | 1   |
| 10 | Illænus Insignis          | 4   |
| 11 | Hypostoma of Isolatus     | 8   |

|    |                                   |    |
|----|-----------------------------------|----|
| 12 | <i>Beyrichia</i>                  |    |
|    | Order Crinoidea                   |    |
| 13 | <i>Clyptocrinus decadactylus</i>  | 3  |
| 14 | “ <i>O’Nealli</i>                 |    |
| 15 | “ <i>Baeri</i>                    |    |
| 16 | <i>Heterocrinus Exilis</i>        | 4  |
| 17 | “ <i>Exiguns</i>                  |    |
| 18 | “ <i>Juvenis</i>                  |    |
| 19 | <i>Poteriocrinus Dyeri</i>        |    |
| 20 | “ <i>Caduceus</i>                 |    |
| 21 | <i>Lichenocrinus Dyeri</i>        | 2  |
| 22 | “ <i>Crateformis</i>              |    |
| 23 | <i>Nucleocrinus Verneuilli</i>    | 2  |
| 24 | <i>Pentremites Symmetricus</i>    |    |
| 25 | <i>Acaricocrinus Tuberosus</i>    |    |
| 26 | <i>Actinoocrinus Biturbinatus</i> |    |
| 27 | <i>Zeacrinus elegans</i>          |    |
| 28 | <i>Ferbesiocrinus Giddingei</i>   |    |
| 29 | <i>Paleaster</i>                  |    |
| 30 | <i>Mallotus Villosus (fish)</i>   | 8  |
| 51 | <i>Strophomena Faciata</i>        | 2  |
| 32 | “ <i>Alternata</i>                | 25 |
| 33 | “ <i>Fraeta</i>                   | 6  |
| 34 | “ <i>Patenta</i>                  | 2  |
| 35 | “ <i>Nazuta</i>                   | 3  |
| 36 | “ <i>Plicata</i>                  |    |

|    |   |                            |     |
|----|---|----------------------------|-----|
| 37 | " | Filixtexta                 | 2   |
| 38 | " | Rhomboidalis               | 5   |
| 39 | " | Declivis                   | 3   |
| 40 | " | Sulcata                    | 13  |
| 41 | " | Nutans                     | 2   |
| 42 | " | Planumbona                 | 12  |
| 43 | " | Plano-canvexa              | 5   |
| 43 | " | Sinuata                    | 4   |
| 44 |   | Orthis Iowensis            | 3   |
| 45 | " | Michelina                  | 2   |
| 46 | " | Testudinaria               | 20  |
| 47 | " | Emacerata                  | 25  |
| 48 | " | Insculpta                  | 25  |
| 49 | " | Occidentalis               | 10  |
| 50 | " | Retrorsa                   | 3   |
| 51 | " | Biforata                   | 100 |
| 52 | " | Lynx                       | 10  |
| 53 | " | Laticostata                | 10  |
| 59 | " | Dentata                    | 5   |
| 60 | " | Acutilirata                | 10  |
| 61 | " | Subquadrata                | 10  |
| 62 | " | Plicatella                 | 2   |
| 63 | " | Pectinella                 |     |
| 64 |   | Cardiomorpha Ventricosa    | 2   |
| 65 |   | Cypricardite Sterlingensis | 3   |
| 66 | " | Quadrangularis             | 2   |

|    |                             |    |
|----|-----------------------------|----|
| 67 | Leda Levada                 | 2  |
| 68 | Tellinomya Obliqua          |    |
| 69 | Orthodesma Curvata          |    |
| 70 | “ Contracta                 |    |
| 71 | Cuneomya Scalpia            |    |
| 72 | Orthonota parallela         |    |
| 73 | Avicula Subarcuata          |    |
| 74 | Mediolopsis Cincinnatiensis | 2  |
| 75 | Lysonia                     |    |
| 76 | Sedgwickia Neglecta         | 5  |
| 77 | Pinna Peracuta              |    |
| 78 | Ambonychia Retrorsa         |    |
| 79 | “ Radiata                   | 5  |
| 80 | “ Bellostriata              |    |
| 81 | “ Alata                     | 3  |
| 82 | Pterina Demissa             | 3  |
| 83 | Triplesia Ortoni            | 3  |
| 84 | Meristella Cylindrica       | 5  |
| 85 | Trematis Millepunctata      | 6  |
| 86 | Lingula                     | 3  |
| 87 | Athyris Sublamellosa        | 3  |
| 88 | Atrypa Reticularis          | 3  |
| 89 | “ Aspera                    | 2  |
| 90 | “ Nodestriata               |    |
| 91 | Rhynchonnella Carolina      |    |
| 92 | “ Capax                     | 20 |



|    |                       |   |
|----|-----------------------|---|
| 93 | Sperifer micronatus   | 3 |
| 94 | Pentamerus Oblongus   | 6 |
| 95 | Terebratula Trinuclea | 3 |
| 96 | Productus Costatus    |   |
| 97 | Productus             | 2 |

## GENUS

## Orthoceras

|     |                  |    |
|-----|------------------|----|
| 98  | " Duseri         | 10 |
| 99  | " Turbidum       |    |
| 100 | " Amplicameratum |    |
| 101 | " Annulatum      | 2  |

## GENUS

## Endoceras

|     |                                       |  |
|-----|---------------------------------------|--|
| 102 | " 3 Varieties of Endoceras proteiform |  |
| 103 | " Annulatum                           |  |
| 104 | Gomphoceras Eos                       |  |
| 105 | Oncoceras Constrictum                 |  |
| 106 | Cyrtoceras Magister                   |  |

## GENUS CHÆTETES.

## Chaetetes Approximatus

|     |                |  |
|-----|----------------|--|
| 107 | " Briarus      |  |
| 108 | " Clathratulus |  |
| 109 | " Corticans    |  |
| 110 | " Dalei        |  |
| 111 | " Delicatulus  |  |
| 112 | " Discoideus   |  |

|     |   |                           |    |
|-----|---|---------------------------|----|
| 113 | " | Frondosus                 |    |
| 114 | " | Mammulatus                |    |
| 115 | " | Newberryi                 |    |
| 116 | " | Nodulosus                 |    |
| 117 | " | Granuliferus              |    |
| 118 | " | Ortoni                    |    |
| 119 | " | Papillatus                |    |
| 120 | " | Petechialis               |    |
| 121 | " | Petropolitannus           |    |
| 122 | " | Rugosus                   |    |
| 123 | " | Subpulchellus             |    |
| 124 |   | Zephretis                 |    |
| 125 | " | Edwardsi                  | 10 |
| 126 |   | Streptelasma Cormiculum   | 18 |
| 127 |   | Dictyophyton Tuberculosum |    |
| 128 |   | Columnopora Cribriformis  |    |
| 129 |   | Aridaphyllum              |    |
| 130 |   | Constellaria Polystomella |    |
| 131 |   | Stellipora Antheloidea    |    |
| 132 |   | Acervularia               |    |
| 133 |   | Halysite Catenulatus      |    |
| 134 |   | Aulopora Arachnoidea      |    |
| 135 |   | Shell-Marl Deposit        |    |
| 136 |   | Favorite Gothlandica      |    |
| 137 | " | Stellata                  |    |
| 138 |   | Chaetetes Fibrosa         |    |

|     |                             |     |
|-----|-----------------------------|-----|
| 139 | Lithostrotion Mamillare     |     |
| 140 | Solenopora Compacta         |     |
| 141 | Erydophyllum (4 varieties)  |     |
| 142 | Acervularia Profunda        |     |
| 143 | "    Davidsoni              |     |
| 144 | Receptaculites Occidentalis |     |
| 145 | Stictopora Magna            |     |
| 146 | Ptilodietya Stictopora      |     |
| 147 | Megalomus Canadensis        |     |
| 148 | Zygospira Modesta           | 100 |
| 149 | "    Headi                  | 40  |
| 150 | Cyclonema Bilix             | 10  |
| 151 | Platystoma Trigonostoma     | 4   |
| 152 | Plurotomaria                | 20  |
| 153 | "    Occidens               |     |
| 154 | "    Sub-Conica             | 3   |
| 155 | Somia Anna                  | 2   |
| 156 | Bucania Expanda             |     |
| 157 | Cyrtolites Magnus           |     |
| 158 | Platyceras Attenuatum       | 2   |
| 159 | Murchisonia Bellicincta     | 10  |
| 160 | Bellerophon Bilobatus       |     |
| 161 | Eomphalus Decewi            |     |
| 162 | Ammonites (3 varieties)     |     |
| 163 | Sagittaria 4 " "            |     |
| 164 | Pecopteris 3 " "            |     |

- 165 Neuropteris 3 “  
166 Annularia Sphenophylloids  
167 Bathotrephis  
168 Dentriles  
169 Fucoids (4 varieties)  
170 Fossil Bone  
171 Petrified wood, Lignite (10 varieties)  
172 “ Sweet Potato  
173 “ Moss  
174 “ Leaves  
175 “ Grain

## INDIAN RELICS

## Stone Implements and Weapons

Grooved Axes all fine 10

Hand Hammers 8

Fleshers good variety 40

Grain Crushers 5

Roller

Mortar.—The specimen I have is fine and perfect value at \$50.

Wedges

Shuttle-form Stones 3 varieties

Circular Stones 2

Pipe a good one of gray sand-stone

Polishers

Pestles 12

Tube

Breastplates, or Gorgets 2

Ball or Sphere — The one I have was found in a grave on the White Oak Creek, O. It is of Calcedony

Hemisphere 2

Banners ( fine ) 3

Badges

Spindle foot rest

Chisels or Borers 2

Register Plate

|   |     |
|---|-----|
| Arrow Heads, all varieties and sizes,<br>every Specimen perfect | 500 |
| Spear head  | 100 |
| Knives and drills   | 50  |
| Other articles—(No name for them)                               |     |
| Number of pieces . . . .  | 754 |

## MINERALS

Several hundred varieties. Some rare and fine  
Specimens; all classified.

— : 0 : —

