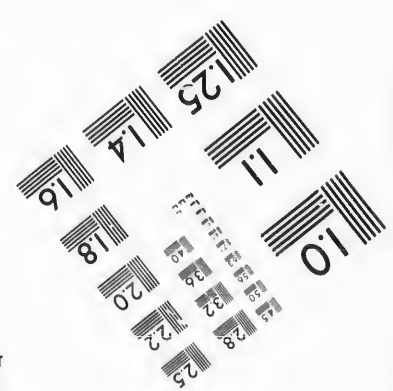
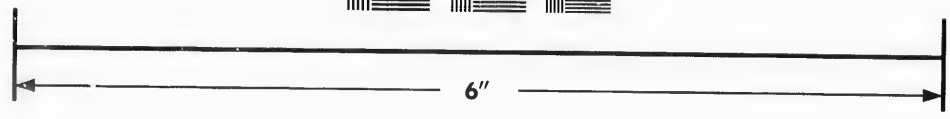
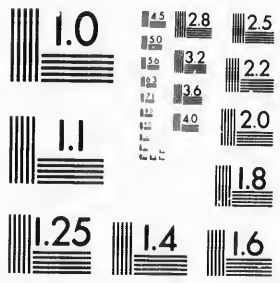


**IMAGE EVALUATION  
TEST TARGET (MT-3)**



**Photographic  
Sciences  
Corporation**

23 WEST MAIN STREET  
WEBSTER, N.Y. 14580  
(716) 872-4503

1.5 2.8  
3.0 3.2 2.5  
3.6 2.2  
4.0 2.0  
1.8

**CIHM/ICMH  
Microfiche  
Series.**

**CIHM/ICMH  
Collection de  
microfiches.**



Canadian Institute for Historical Microreproductions / Institut canadien de microreproductions historiques

10

**© 1987**

Technical and Bibliographic Notes/Notes techniques et bibliographiques

The Institute has attempted to obtain the best original copy available for filming. Features of this copy which may be bibliographically unique, which may alter any of the images in the reproduction, or which may significantly change the usual method of filming, are checked below.

L'Institut a microfilmé le meilleur exemplaire qu'il lui a été possible de se procurer. Les détails de cet exemplaire qui sont peut-être uniques du point de vue bibliographique, qui peuvent modifier une image reproduite, ou qui peuvent exiger une modification dans la méthode normale de filmage sont indiqués ci-dessous.

- Coloured covers/  
Couverture de couleur
- Covers damaged/  
Couverture endommagée
- Covers restored and/or laminated/  
Couverture restaurée et/ou pelliculée
- Cover title missing/  
Le titre de couverture manque
- Coloured maps/  
Cartes géographiques en couleur
- Coloured ink (i.e. other than blue or black)/  
Encre de couleur (i.e. autre que bleue ou noire)
- Coloured plates and/or illustrations/  
Planches et/ou illustrations en couleur
- Bound with other material/  
Relié avec d'autres documents
- Tight binding may cause shadows or distortion along interior margin/  
La reliure serrée peut causer de l'ombre ou de la distorsion le long de la marge intérieure
- Blank leaves added during restoration may appear within the text. Whenever possible, these have been omitted from filming/  
Il se peut que certaines pages blanches ajoutées lors d'une restauration apparaissent dans le texte, mais, lorsque cela était possible, ces pages n'ont pas été filmées.
- Additional comments:/ [Printed ephemera] 4 p.  
Commentaires supplémentaires:

- Coloured pages/  
Pages de couleur
- Pages damaged/  
Pages endommagées
- Pages restored and/or laminated/  
Pages restaurées et/ou pelliculées
- Pages discoloured, stained or foxed/  
Pages décolorées, tachetées ou piquées
- Pages detached/  
Pages détachées
- Showthrough/  
Transparence
- Quality of print varies/  
Qualité inégale de l'impression
- Includes supplementary material/  
Comprend du matériel supplémentaire
- Only edition available/  
Seule édition disponible
- Pages wholly or partially obscured by errata slips, tissues, etc., have been refilmed to ensure the best possible image/  
Les pages totalement ou partiellement obscurcies par un feuillet d'errata, une pelure, etc., ont été filmées à nouveau de façon à obtenir la meilleure image possible.

This item is filmed at the reduction ratio checked below/  
Ce document est filmé au taux de réduction indiqué ci-dessous.

10X	12X	14X	16X	18X	20X	22X	24X	26X	28X	30X	32X
					✓						

The copy filmed here has been reproduced thanks to the generosity of:

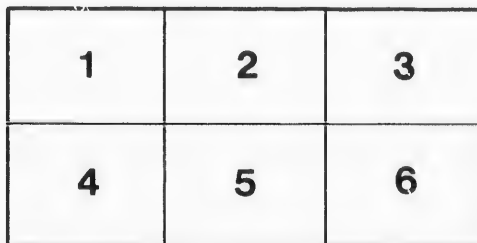
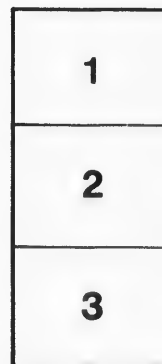
Douglas Library  
Queen's University

The images appearing here are the best quality possible considering the condition and legibility of the original copy and in keeping with the filming contract specifications.

Original copies in printed paper covers are filmed beginning with the front cover and ending on the last page with a printed or illustrated impression, or the back cover when appropriate. All other original copies are filmed beginning on the first page with a printed or illustrated impression, and ending on the last page with a printed or illustrated impression.

The last recorded frame on each microfiche shall contain the symbol  $\rightarrow$  (meaning "CONTINUED"), or the symbol  $\nabla$  (meaning "END"), whichever applies.

Maps, plates, charts, etc., may be filmed at different reduction ratios. Those too large to be entirely included in one exposure are filmed beginning in the upper left hand corner, left to right and top to bottom, as many frames as required. The following diagrams illustrate the method:



L'exemplaire filmé fut reproduit grâce à la générosité de:

Douglas Library  
Queen's University

Les images suivantes ont été reproduites avec le plus grand soin, compte tenu de la condition et de la netteté de l'exemplaire filmé, et en conformité avec les conditions du contrat de filmage.

Les exemplaires originaux dont la couverture en papier est imprimée sont filmés en commençant par le premier plat et en terminant soit par la dernière page qui comporte une empreinte d'impression ou d'illustration, soit par le second plat, selon le cas. Tous les autres exemplaires originaux sont filmés en commençant par la première page qui comporte une empreinte d'impression ou d'illustration et en terminant par la dernière page qui comporte une telle empreinte.

Un des symboles suivants apparaîtra sur la dernière image de chaque microfiche, selon le cas: le symbole  $\rightarrow$  signifie "A SUIVRE", le symbole  $\nabla$  signifie "FIN".

Les cartes, planches, tableaux, etc., peuvent être filmés à des taux de réduction différents. Lorsque le document est trop grand pour être reproduit en un seul cliché, il est filmé à partir de l'angle supérieur gauche, de gauche à droite, et de haut en bas, en prenant le nombre d'images nécessaire. Les diagrammes suivants illustrent la méthode.

Queen's University  
Library

KINGSTON, ONTARIO

L  
F10  
13

L  
F1028  
1877 Q

## QUEEN'S COLLEGE.

From "Queen's College Journal" Jan. 27, 1877.

As a good deal of misunderstanding seems to exist in regard to Queen's College, especially in the remoter parts of the Dominion, it is thought advisable to give information upon some points that are only lightly touched upon in the Calendar, or that are not referred to at all.

### POWERS AND RELATIONS.

Queen's College has University powers secured by Royal Charter. It is one of the oldest Universities in the Dominion, being now in its thirty-sixth session.

It gives the Degrees of Bachelor of Arts (B.A.), Bachelor of Science (B.Sc.), and Bachelor of Divinity (B.D.) upon examination; and that of Master of Arts (M.A.) upon the production of an approved thesis after two years' standing as Bachelor of Arts.

Having the Royal College of Physicians and Surgeons affiliated to it, the Senate of the University appoints examiners in Medicine and confers the Degree of Doctor of Medicine (M.D.) on successful candidates.

Although established by the Church in connection with the Church of Scotland, and supported by it until the union of Presbyterian Churches, it has always been, and is still, non-denominational as regards its Arts Faculty. It exacts no tests: students from all the leading denominations in Canada have occupied its benches, and many of them are to be found in the professions of the Ministry, Law, Medicine, Engineering, Teaching, &c., in this and other countries.

By recent legislation Queen's College has the same relation to the United Church as it had formerly to the Presbyterian Church of Canada in connection with the Church of Scotland; and it is the only College in connection with the Presbyterian Church in Canada which both gives a full Arts course and grants degrees.

60312

## ADMISSION TO CLASSES.

A curriculum somewhat similar to that of the Scottish Universities has recently been adopted, with the object of giving to all students, as far as possible, a choice as to the order in which they may take the several classes, and of allowing any student, not intending to graduate, to take any classes he pleases and in any order which he thinks most profitable. Matriculation, when practicable, is advisable and confers certain advantages, but it is not essential even for students studying for a degree; thus, if a student having a degree in view enters the junior classes without matriculating and passes the examination in these classes at the close of the session or at the beginning of the following session, he is thereupon admitted to the rank of undergraduate and is thereafter in all respects as if he had matriculated. Some students now in attendance have in this way obtained the rank of undergraduates.

Students preparing for the ministry in the Presbyterian Church, and not desiring to take a degree, are required to pass only such examinations as the Church may prescribe.

## DEGREE OF BACHELOR OF ARTS.

The course of study for this degree comprises thirteen classes, of which eleven are compulsory and two optional, so that a student who graduates in four years must take four classes in one session only, while students who are able to enter the senior classes in their first year may graduate in three years.

The compulsory classes are Junior Latin, Junior Greek, Senior Latin, Senior Greek, Junior Mathematics, Senior Mathematics, Chemistry, Logic and Metaphysics, Ethics, Natural Philosophy, and English Literature. The options are between History and Natural Science, and between French,

German and Hebrew, that is, one class from each of these two groups must be taken.

The examination for passing in any one class is independent of the examinations for passing in other classes, and may be taken either at the close of the session in which the class is attended or at the beginning of the following session.

#### BURSARIES.

These are sums of money awarded to deserving matriculants who have in view the ministry of the Presbyterian Church in Canada, and do not require to be repaid unless the recipients fail to enter the ministry. Recommendations accompanying contributions for the benefit of particular students, whether matriculants or not, are duly observed.

#### SCHOLARSHIPS.

Scholarships varying from \$32 to \$120 are awarded upon the results of examinations. A sum of over \$1,800 is available for this purpose in each session.

In compliance with the wishes of the donors about one-third of this amount is awarded without distinction of church or creed, the balance of \$1,200 being for the special benefit of students for the ministry of the Presbyterian Church. Scholarships can be held only by matriculated students, and hence one advantage of matriculating.

#### PRIZES.

Besides prizes in books given for distinction in class-work, there are this session seven prizes of \$25 each and one of \$40 for the best essays upon special subjects. The Elocution Association also gives three prizes for superiority in reading.

It will be seen from what has been said above that while Queen's College allows great freedom in the selection of classes to those who desire to take only a part of the curriculum and to students preparing for



the ministry, it at the same time aims at giving a thorough education to all who aspire to the rank of graduate.

The Degree of Bachelor of Arts is given only to those who have shown by examination their acquaintance with the whole round of subjects constituting a liberal education. Impressed with the importance of keeping up the standard of attainment the University demands not less than one-third of the maximum of marks allotted to each subject, thus making the standard for passing at least as high as that of any University in the Dominion: but, as has been already pointed out, the taking of this Degree is purely optional, and therefore does not affect those who, for whatever reason, may not see fit to study for it.

A reference to the Calendar will show that by the Degree of Bachelor of Science, recently established, in connection with honours, encouragement is given to students who have completed the ordinary curriculum for B.A. to extend their knowledge of special subjects.

The principle upon which the Authorities of the College have proceeded is that the first thing to be aimed at is the imparting of a sound, and, as far as possible, complete education, and that the knowledge of special subjects of study is a secondary matter affecting only a few.

The advantages of this method are easily seen. Among them may be mentioned the consideration that no matter what the student's future course in life may be—whether he enters the Church or engages in teaching or in the practice of Law or Medicine—all his mental powers have been exercised, and he is in a position to form an intelligent judgment upon questions of speculative interest or practical importance.

---

The Calendar may be had by applying to the Registrar, Rev. Professor Mowat.

