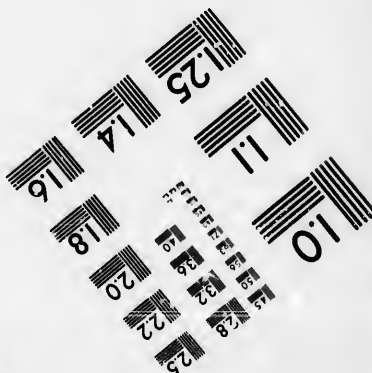
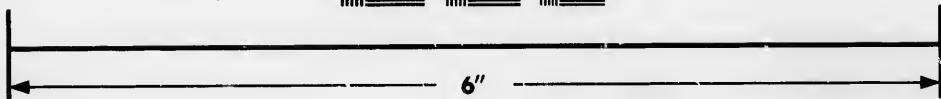
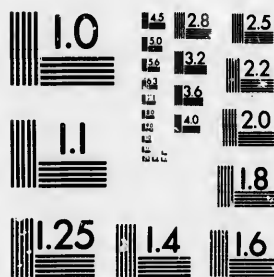


**IMAGE EVALUATION
TEST TARGET (MT-3)**



**Photographic
Sciences
Corporation**

23 WEST MAIN STREET
WEBSTER, N.Y. 14580
(716) 872-4503

1.8
2.0
2.2
2.5
3.0
3.2
3.6
4.0
4.5
5.0
5.6
6.3
7.1
8.0
9.0
10.0
11.2
12.5
14.0
16.0
18.0
20.0
22.5
25.0
28.0
31.5
36.0
40.0
45.0
50.0
56.0
63.0
71.0
80.0
90.0
100.0

**CIHM/ICMH
Microfiche
Series.**

**CIHM/ICMH
Collection de
microfiches.**



Canadian Institute for Historical Microreproductions / Institut canadien de microreproductions historiques

10
11
12
13
14
15
16
17
18
19
20
21
22
23
24
25
26
27
28
29
30
31
32
33
34
35
36
37
38
39
40
41
42
43
44
45
46
47
48
49
50
51
52
53
54
55
56
57
58
59
60
61
62
63
64
65
66
67
68
69
70
71
72
73
74
75
76
77
78
79
80
81
82
83
84
85
86
87
88
89
90
91
92
93
94
95
96
97
98
99
100

© 1985

Technical and Bibliographic Notes/Notes techniques et bibliographiques

The Institute has attempted to obtain the best original copy available for filming. Features of this copy which may be bibliographically unique, which may alter any of the images in the reproduction, or which may significantly change the usual method of filming, are checked below.

L'Institut a microfilmé le meilleur exemplaire qu'il lui a été possible de se procurer. Les détails de cet exemplaire qui sont peut-être uniques du point de vue bibliographique, qui peuvent modifier une image reproduite, ou qui peuvent exiger une modification dans la méthode normale de filmage sont indiqués ci-dessous.

- Coloured covers/
Couverture de couleur
- Covers damaged/
Couverture endommagée
- Covers restored and/or laminated/
Couverture restaurée et/ou pelliculée
- Cover title missing/
Le titre de couverture manque
- Coloured maps/
Cartes géographiques en couleur
- Coloured ink (i.e. other than blue or black)/
Encre de couleur (i.e. autre que bleue ou noire)
- Coloured plates and/or illustrations/
Planches et/ou illustrations en couleur
- Bound with other material/
Relié avec d'autres documents
- Tight binding may cause shadows or distortion along interior margin/
La reliure serrée peut causer de l'ombre ou de la distorsion le long de la marge intérieure
- Blank leaves added during restoration may appear within the text. Whenever possible, these have been omitted from filming/
Il se peut que certaines pages blanches ajoutées lors d'une restauration apparaissent dans le texte, mais, lorsque cela était possible, ces pages n'ont pas été filmées.

- Coloured pages/
Pages de couleur
- Pages damaged/
Pages endommagées
- Pages restored and/or laminated/
Pages restaurées et/ou pelliculées
- Pages discoloured, stained or foxed/
Pages décolorées, tachetées ou piquées
- Pages detached/
Pages détachées
- Showthrough/
Transparence
- Quality of print varies/
Qualité inégale de l'impression
- Includes supplementary material/
Comprend du matériel supplémentaire
- Only edition available/
Seule édition disponible
- Pages wholly or partially obscured by errata slips, tissues, etc., have been refilmed to ensure the best possible image/
Les pages totalement ou partiellement obscurcies par un feuillet d'errata, une pelure, etc., ont été filmées à nouveau de façon à obtenir la meilleure image possible.

Additional comments:
Commentaires supplémentaires:

[Printed ephemera] 1 sheet (verso blank)

This item is filmed at the reduction ratio checked below/
Ce document est filmé au taux de réduction indiqué ci-dessous.

10X	12X	14X	16X	18X	20X	22X	24X	26X	28X	30X	32X
									/		

The copy filmed here has been reproduced thanks to the generosity of:

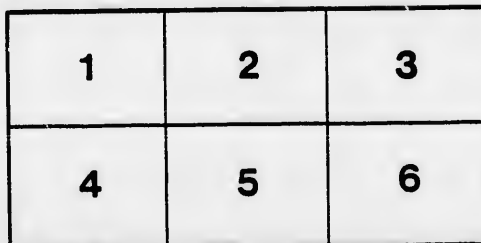
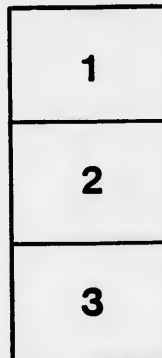
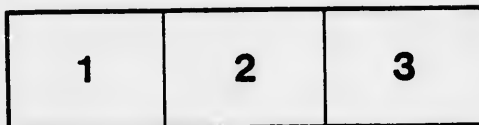
D. B. Weldon Library
University of Western Ontario
(Regional History Room)

The images appearing here are the best quality possible considering the condition and legibility of the original copy and in keeping with the filming contract specifications.

Original copies in printed paper covers are filmed beginning with the front cover and ending on the last page with a printed or illustrated impression, or the back cover when appropriate. All other original copies are filmed beginning on the first page with a printed or illustrated impression, and ending on the last page with a printed or illustrated impression.

The last recorded frame on each microfiche shall contain the symbol \rightarrow (meaning "CONTINUED"), or the symbol ∇ (meaning "END"), whichever applies.

Maps, plates, charts, etc., may be filmed at different reduction ratios. Those too large to be entirely included in one exposure are filmed beginning in the upper left hand corner, left to right and top to bottom, as many frames as required. The following diagrams illustrate the method:



L'exemplaire filmé fut reproduit grâce à la générosité de:

D. B. Weldon Library
University of Western Ontario
(Regional History Room)

Les images suivantes ont été reproduites avec le plus grand soin, compte tenu de la condition et de la netteté de l'exemplaire filmé, et en conformité avec les conditions du contrat de filmage.

Les exemplaires originaux dont la couverture en papier est imprimée sont filmés en commençant par le premier feuillet et en terminant soit par la dernière page qui comporte une empreinte d'impression ou d'illustration, soit par le second feuillet, selon le cas. Tous les autres exemplaires originaux sont filmés en commençant par la première page qui comporte une empreinte d'impression ou d'illustration et en terminant par la dernière page qui comporte une telle empreinte.

Un des symboles suivants apparaîtra sur la dernière image de chaque microfiche, selon le cas: le symbole \rightarrow signifie "A SUIVRE", le symbole ∇ signifie "FIN".

Les cartes, planches, tableaux, etc., peuvent être filmés à des taux de réduction différents. Lorsque le document est trop grand pour être reproduit en un seul cliché, il est filmé à partir de l'angle supérieur gauche, de gauche à droite, et de haut en bas, en prenant le nombre d'images nécessaire. Les diagrammes suivants illustrent la méthode.

ails
du
difier
une
page

rrata
o

belure,
n à



32X

To His Excellency the Governor General, &c.

The Memorial of the Municipal Council of the Corporation of the County of Simcoe, in Council assembled,

RESPECTFULLY SHEWETH:—

That your Memorialists have on a former occasion addressed your Excellency on the subject of the manner of disposing of the Crown Lands of the Province, and expressed an opinion that it had been injurious to the progress and prosperity of the country, and the advisability of adopting a system of free grants in the future.

Since the Memorial referred to was forwarded to your Excellency, your Memorialists have had reason to believe, not only that the views that they then expressed on this subject were sound ones, but that they are held by a large majority of the people of Upper Canada.

Your Memorialists, however, feel that in placing a limit on the value of the lands to be given as free grants, they acted without due consideration, and are desirous, as the subject is such an important one, to the interests of the Province, to bring it again before your Excellency, and respectfully urge its consideration on the Government, without reference to any limit in the making of such free grants in respect to the value of the land, or otherwise.

Your Memorialists feel bound to again state to your Excellency that they feel satisfied that a free grant system, with proper restrictions as to actual settlement, is the true policy by which the Government of a new country should be guided in the disposal of its Agricultural Lands, inasmuch as rapid settlement tends more than anything else to increase the wealth and material prosperity of the community, and by increasing the number of contributors to the public exchequer, more than makes up in a pecuniary way for the increased direct outlay which would in that case have to be made in connection with the Crown Lands Department; and they would therefore again suggest and press upon the attention of your Excellency the advisability that the Crown Lands in Upper Canada, which are yet at the disposal of the Crown and of the ordinary description suitable for farming purposes, shall in future be offered free to actual settlers, or at a nominal price, to cover the expenses of survey, and accompanied by the most stringent regulations as to settlement; and further that all lands not occupied or held by actual settlers, the purchase money of which is in arrears to the Crown, shall be declared forfeited so soon as the same can be legally done, and at once offered for settlement as an encouragement to immigration, and to obtain for settlement a large quantity of the wild lands of the Province now held by speculators to the great injury of the Agricultural interests of the Province.

Your Memorialists would respectfully beg to call the attention of your Excellency in Council to the suggestions made in their former Memorial, relative to the condition of the settlers in backward townships, such as Morrison and Muskoka, and others recently opened for settlement; and would add that, especially in the case of the townships named, intersecting lines of road should be surveyed and opened, these townships having progressed rapidly and satisfactorily under the free grant system, and only requiring a continuance and extension of the same policy to become an important and thriving settlement.

Your Memorialists trust that your Excellency and the responsible advisers of Her Majesty will be pleased to give this subject the consideration which its importance deserves, believing that the adoption of a free grant policy in respect to the disposing of the farming lands of the Province, still held by the Crown, would greatly advance the best interests of the Province.

And your Memorialists as in duty bound will ever pray, &c.

(Signed)

THOS. R. FERGUSON, (I.S.)

WARDEN,

Co. Simcoe.

COUNCIL HALL, BARRIE, }
Nov. 29th, 1865. }

R. T. BANTING,
Co. CLK., Co. SIMCOE.

1865
COUNTY OF SIMCOE

