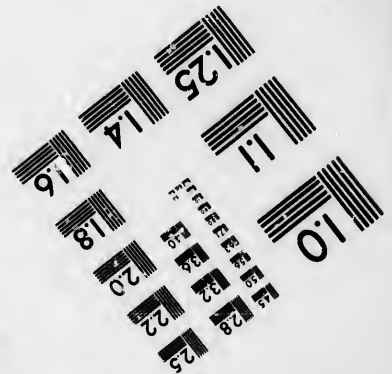
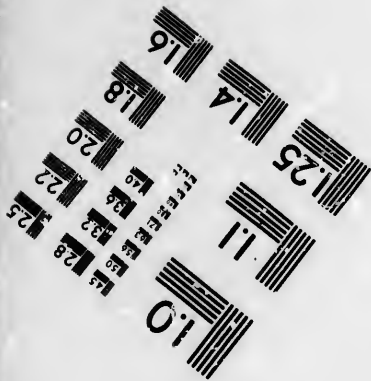
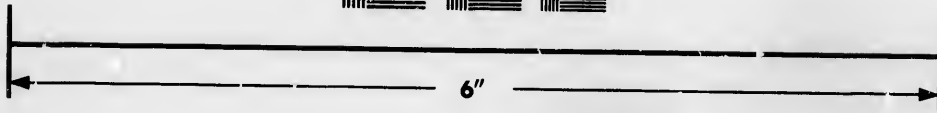
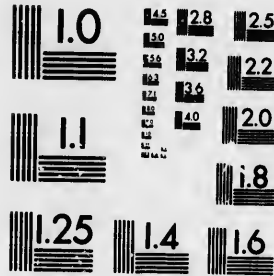


**IMAGE EVALUATION
TEST TARGET (MT-3)**



**Photographic
Sciences
Corporation**

23 WEST MAIN STREET
WEBSTER, N.Y. 14580
(716) 672-4503



**CIHM/ICMH
Microfiche
Series.**

**CIHM/ICMH
Collection de
microfiches.**



Canadian Institute for Historical Microreproductions / institut canadien de microreproductions historiques



© 1986

Technical and Bibliographic Notes/Notes techniques et bibliographiques

The Institute has attempted to obtain the best original copy available for filming. Features of this copy which may be bibliographically unique, which may alter any of the images in the reproduction, or which may significantly change the usual method of filming, are checked below.

L'Institut a microfilmé le meilleur exemplaire qu'il lui a été possible de se procurer. Les détails de cet exemplaire qui sont peut-être uniques du point de vue bibliographique, qui peuvent modifier une image reproduite, ou qui peuvent exiger une modification dans la méthode normale de filmage sont indiqués ci-dessous.

- Coloured covers/
Couverture de couleur
- Covers damaged/
Couverture endommagée
- Covers restored and/or laminated/
Couverture restaurée et/ou pelliculée
- Cover title missing/
Le titre de couverture manque
- Coloured maps/
Cartes géographiques en couleur
- Coloured ink (i.e. other than blue or black)/
Encre de couleur (i.e. autre que bleue ou noire)
- Coloured plates and/or illustrations/
Planches et/ou illustrations en couleur
- Bound with other material/
Relié avec d'autres documents
- Tight binding may cause shadows or distortion along interior margin/
La reliure serrée peut causer de l'ombre ou de la distorsion le long de la marge intérieure
- Blank leaves added during restoration may appear within the text. Whenever possible, these have been omitted from filming/
Il se peut que certaines pages blanches ajoutées lors d'une restauration apparaissent dans le texte, mais, lorsque cela était possible, ces pages n'ont pas été filmées.

- Coloured pages/
Pages de couleur
- Pages damaged/
Pages endommagées
- Pages restored and/or laminated/
Pages restaurées et/ou pelliculées
- Pages discoloured, stained or foxed/
Pages décolorées, tachetées ou piquées
- Pages detached/
Pages détachées
- Showthrough/
Transparence
- Quality of print varies/
Qualité inégale de l'impression
- Includes supplementary material/
Comprend du matériel supplémentaire
- Only edition available/
Seule édition disponible
- Pages wholly or partially obscured by errata slips, tissues, etc., have been refilmed to ensure the best possible image/
Les pages totalement ou partiellement obscurcies par un feuillet d'errata, une pelure, etc., ont été filmées à nouveau de façon à obtenir la meilleure image possible.

Additional comments: [Printed ephemera] 1 sheet (verso blank)
Commentaires supplémentaires:

This item is filmed at the reduction ratio checked below/
Ce document est filmé au taux de réduction indiqué ci-dessous.

10X	12X	14X	16X	18X	20X	22X	24X	26X	28X	30X	32X
				✓							

The copy filmed here has been reproduced thanks to the generosity of:

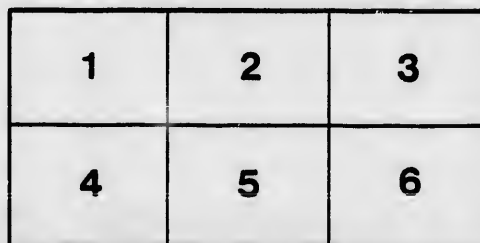
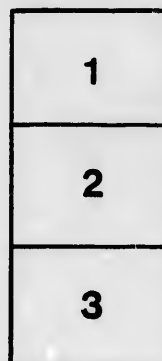
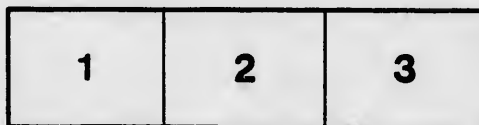
New Brunswick Museum
Saint John

The images appearing here are the best quality possible considering the condition and legibility of the original copy and in keeping with the filming contract specifications.

Original copies in printed paper covers are filmed beginning with the front cover and ending on the last page with a printed or illustrated impression, or the back cover when appropriate. All other original copies are filmed beginning on the first page with a printed or illustrated impression, and ending on the last page with a printed or illustrated impression.

The last recorded frame on each microfiche shall contain the symbol \rightarrow (meaning "CONTINUED"), or the symbol ∇ (meaning "END"), whichever applies.

Maps, plates, charts, etc., may be filmed at different reduction ratios. Those too large to be entirely included in one exposure are filmed beginning in the upper left hand corner, left to right and top to bottom, as many frames as required. The following diagrams illustrate the method:



L'exemplaire filmé fut reproduit grâce à la générosité de:

New Brunswick Museum
Saint John

Les images suivantes ont été reproduites avec le plus grand soin, compte tenu de la condition et de la netteté de l'exemplaire filmé, et en conformité avec les conditions du contrat de filmage.

Les exemplaires originaux dont la couverture en papier est imprimée sont filmés en commençant par le premier plat et en terminant soit par la dernière page qui comporte une empreinte d'impression ou d'illustration, soit par le second plat, selon le cas. Tous les autres exemplaires originaux sont filmés en commençant par la première page qui comporte une empreinte d'impression ou d'illustration et en terminant par la dernière page qui comporte une telle empreinte.

Un des symboles suivants apparaîtra sur la dernière image de chaque microfiche, selon le cas: le symbole \rightarrow signifie "A SUIVRE", le symbole ∇ signifie "FIN".

Les cartes, planches, tableaux, etc., peuvent être filmés à des taux de réduction différents. Lorsque le document est trop grand pour être reproduit en un seul cliché, il est filmé à partir de l'angle supérieur gauche, de gauche à droite, et de haut en bas, en prenant le nombre d'images nécessaire. Les diagrammes suivants illustrent la méthode.

FOR SALE, BY PRIVATE

The new Barque

AMELIA,

353 tons O. M., 372 tons N. M.
 Length 108 feet.
 Breadth 24 feet.
 Depth 16 feet 5-10ths.

Built at New Glasgow, P. E. I., in July, 1851; just classed four years A 1 at Lloyd's, and coppered.— For Inventories and further particulars apply to

CUNARD, MUNN, & CO., Brokers.

The fine new Barque

BRITON,

473 tons register.
 Length 115 feet 8-10ths.
 Breadth 25 feet 6-10ths.
 Depth 18 feet.

Built at St. Martins, New Brunswick, by Messrs. Fownes & Melvin; is copper fastened, and combines great capacity for stowage, with good sailing qualities.— For Inventories and further particulars apply to

CUNARD, MUNN, & CO., Brokers.

The fine Ship

SCHOODIAC,

Length 154 feet 4-10ths,
 Breadth 29 feet 2-10ths,
 Depth 22 feet 6-10ths.

1004 3309-3500ths tons register.

Built at St. Stephen's, N. B., in 1841, for the use of her present Owners, who have kept the Vessel and her stores in first-rate order. The materials used in her construction are of the best description that the province can produce, her frame being principally hackmatack. She underwent a heavy repair in 1850, when she was re-metaled, &c. She is a large carrier, and well known as a fast sailer, and is a most desirable vessel for the Sugar, Cotton, or West Coast Trades.— For inventories and further particulars apply to

CUNARD, MUNN & CO., Brokers.

The fine new clipper Barque

ARIADNE,

Length 119 feet 4-10ths.
 Breadth 24 feet 2-10ths.
 Depth 14 feet 6-10ths.

361 2-100ths tons register;

Built at St. John, N. B., by Mr. Alexander Sims, of the best materials, is handsomely finished and well found. In this superior vessel are combined very large carrying qualities upon a light draft of water, with swift sailing properties. Notwithstanding she has much less depth of hold, and is finer drawn at both ends, than vessels of her tonnage usually are; her capacity is equal to upwards of 800 tons measurement. These points in her favour, with her other good properties, should make her a most desirable vessel to those who may require one of her tonnage.— For inventories and further particulars apply to

CUNARD, MUNN, & CO., Brokers.

The fine Brigantine

The Screw Steamer

JOHN MUNN

Length 121 f
 Breadth 20 f
 Depth 13 f

Tonnage for cargo 181 302-3500 tons; engine built at Waterford, in 1846, by Messrs. V. A 1, 10 years in 1850; is propelled by two horse power each, and carries 300 tons of light draft of water. She is in first rate order, had new Boilers, and extensive repairs; immediately will be open for charter. For further particulars apply to

CUNARD, MUNN

The fine Barque

COMMERCE

About 520 tons O. M., 565 tons
 Length 124 f
 Depth 19 f
 Breadth 26 f

Built at Yarmouth, N.S., in 1846; is copper iron kneed, and sheathed with yellow metal kept in first-rate order by her present owners; is very strong, and well put together; carries a large cargo. She will bear close sail, and is well known in the Charleston trade.

CARGOES.

650 Tons Iron, on 16 ft. 6 in. w
 725 Loads Timber under Deck.
 2000 Bales Charleston Cotton.

185 American Passengers' tween

Besides first cabin poop accommodation is well found in stores: lying in Sars Inventory or further particulars apply to

CUNARD, MUNN, &

The A 1 (in red) Barque

KINGSTON

306 tons N. M., 268 tons O.

Built at Hull; is in excellent order, having extensive repairs; a large carrier; is well known in the Honduras trade, for which she is well fitted. Brunswick Dock.—For particulars apply to

CUNARD, MUNN

The new Brigantine

ACASTUS

155 1184 tons.

Length
 Breadth
 Depth

Launched at Prince Edward Island, 1847, where she was laid up all winter, and has since been in service; is a very pretty model; lying in Queen's Dock, for further particulars apply to

CUNARD, MUNN

The new Brig.

BATTUS,

Y PRIVATE TREATY.

The Screw Steamer

JOHN MUNN,

Length 121 feet.
 Breadth 20 feet.
 Depth 13 feet 6-10ths.
 Cargo 181 302-3500 tons; engine room 76 tons;
 performed, in 1846, by Messrs. White, and classed
 in 1850; is propelled by two engines, of 25
 each, and carries 300 tons of heavy goods on a
 water. She is in first rate order, having lately
 repairs, and extensive repairs; if not sold imme-
 diately open for charter. For further particulars

CUNARD, MUNN, & CO. Brokers.

The fine Barque

COMMERCE;

Length 124 feet 5-10ths.
 Breadth 19 feet 5-10ths.
 Depth 26 feet 9-10ths.
 Built at Mirimachi, N.S., in 1846; is copper fastened and
 sheathed with yellow metal, and has been
 in first rate order by her present owners; the vessel
 strong, and well put together; sails very fast;
 carries cargo. She will bear close inspection, and
 is in the Charleston trade.

CARGOES.

Carries Iron, on 16 ft. 6 in. water.
 Loads Timber under Deck.
 Carries Charleston Cotton.
 American Passengers 'tween decks.
 Has a fine first cabin poop accommodation.
 Laid up in stores: lying in Sandon Dock.—For
 further particulars apply to

CUNARD, MUNN, & CO., Brokers.

The Æ 1 (in red) Barque

KINGSTON,

306 tons N. M., 268 tons O. M.

is in excellent order, having lately received
 repairs; a large carrier; is well known in the
 trade, for which she is well adapted; lying in
 Sandon Dock.—For particulars apply to

CUNARD, MUNN, & CO., Brokers.

The new Brigantiae

ACASTUS;

155 tons.

Length 30 feet.
 Breadth 19 feet 9-10ths.
 Depth 13 feet.

Prince Edward Island, 27th November, 1851,
 was laid up all winter, and has just come home;
 in first rate order; lying in Queen's Dock.—For further
 particulars apply to

CUNARD, MUNN & CO., Brokers.

The new Brig.

BATTUS,

A most superior and highly finished

NEW BARQUE,

About 420 tons register,

Just launched at Mirimachi, N. B., built of the finest oak-
 matec, and guaranteed to class seven years; every care has
 been taken in the construction of this vessel, both in the
 quality of her materials, and beauty of her model.—For
 further particulars apply to

CUNARD, MUNN, & CO., Brokers.

A splendid clipper

NEW SHIP,

About 1090 tons N. M., 1018 tons O. M.

Length between perpendiculars... 181 feet 6 inches.
 Breadth, extreme 34 feet 6 inches.
 Depth of hold 23 feet 9 inches.

Now building at Mirimachi, N. B., of similar class and
 materials to the above; is expected to be one of the fastest
 vessels afloat, and well worthy the attention of parties
 requiring a ship for the Australian trade.—For further
 particulars apply to

CUNARD, MUNN, & CO., Brokers.

A NEW BARQUE,

About 860 tons register,

Length 114 feet.
 Breadth 25 feet 2-10ths.
 Depth 17 feet 2-10ths.

Now building on the Clyde, nearly ready for launching,
 classed ten years A 1; is a fine model, will sail fast and
 carry well.—For further particulars apply to

CUNARD, MUNN, & CO., Brokers.

A CLIPPER SCHONNER,

About 160 tons register.

Length 107 feet.
 Breadth 19 feet 6-12ths.
 Depth 11 feet 10-12ths.

Now building on the Clyde, nearly ready for launching,
 classed ten years A 1, will carry about 300 tons, and sail
 very fast.—For particulars apply to

CUNARD, MUNN, & CO., Brokers.

A NEW BARQUE,

about 365 tons O. M., 415 tons N. M.

Length of keel and fore rake... 114 feet.
 Breadth, extreme 26 feet 6-12ths.
 Depth in Hold 18 feet.

Now upon the Stocks, and under special inspection of
 Lloyd's Surveyor, and intended to class nine years A 1.
 For further particulars apply to

CUNARD, MUNN, & CO., Brokers.

A NEW BARQUE,

357 tons.

Length for tonnage 113 feet.

measurement. These points in her favour, with her other good properties, should make her a most desirable vessel to those who may require one of her tonnage. — For inventories and further particulars apply to:

CUNARD, MUNN & CO., Brokers.

The new Brigantine
CAROLINE.

95 tons N.M., about 130 tons O.M.
Length 80 feet
Breadth 17 feet 1-10th.
Depth 14 feet 6-10th.

Built at Bathurst, N. B., last year, of hackmatack from floors to gunwale, inside and outside; to be classed by Sellers seven years A 1 at Lloyd's. Built for a Newfoundland packet, and will be found, on inspection, a most superior vessel: now lying in Birkenhead Dock. — For further particulars apply to

CUNARD, MUNN & CO., Brokers.

The new British Built Barque

KOH-I-NOOR,

303 3-10ths tons net register.
Length 105 feet 2-10ths.
Breadth 23 feet 2-10ths.
Depth 15 feet 7-10ths.

Built at Glanvoda, near Pwllheli, County of Caernarvon, launched in March last, is iron kneed, and thoroughly copper fastened, and will class 12 years, A 1, from 1st January, 1853; she is a faithfully built vessel, (having been built under special inspection,) and a most desirable ship for any trade, having great carrying capacities; now lying in the Queen's Dock. For inventories and further particulars, apply to

CUNARD, MUNN & CO., Brokers.

The superior new clipper Barque

LOUISE,

445 tons N.M., 449 tons O.M.
Length per register 118 feet 1-10th.
Breadth 24 feet 9-10ths.
Depth 17 feet 7-10ths.
Height between decks 7 feet.

Built at St. John, N. B., under inspection, and launched in May last; will class six years; is a beautiful model; has great sailing and carrying qualities; built principally of selected well-seasoned hackmatack and pitch pine; having been nearly two years in construction; essentially copper fastened; her sails, rigging, cables, &c. are of best quality and full size; will be found on inspection one of the best ships ever built in New Brunswick. — For particulars apply to

CUNARD, MUNN, & CO., Brokers.

The A 1 Brigantine

JOHN,

125 tons O. M., 88 tons N. M.
Length 67 feet.
Breadth 18 feet.
Depth 9 feet 10 inches.

Built at Prince Edward Island in 1849, sails very fast, is abundantly found in stores, can be sent to sea without ballast, and carries 145 tons dead weight; is well adapted for the coasting trade. — For further particulars apply to

CUNARD, MUNN, & CO., Brokers.

where she was laid up in 1848, and she is a very pretty model: lying in Queen's Dock. For particulars apply to

CUNARD, MUNN

The new Brig.

BATTUS,

218 tons.

Launched at Prince Edward Island last year, and classed for 4 years; lying in Queen's Dock. For further particulars apply to

CUNARD, MUNN, & CO., Brokers.

The beautiful clipper Barque

BONITO,

267 tons N. M., 370 tons O. M.
Length 111 feet
Breadth 22 feet
Depth 12 feet

Very substantially built at St. John, N. B., she is fitted with iron tanks, and her stores are in the best order. — For particulars apply to

CUNARD, MUNN,

The beautiful new Barque

KAFFIR

246 tons register.
Length 111 feet
Breadth 21 feet
Depth 13 feet

Very substantially built this season at St. John, N. B., she is of the lines of a celebrated Aberdeen clipper, and remarkably fast: lying in Brunswick Dock. For particulars apply to

CUNARD, MUNN,

A splendid Clipper

NEW SHIP

About 930 tons N. M., and 1000 tons O. M.
Length 163 feet
Breadth outside 34 feet
Depth 22 feet

Now building in New Brunswick by the most favourite ships "Jemsetjee Cursetjee," "David M'Iver." Although this vessel is not quite so new, yet she will carry well on the ordinary well on the new tonnage, being 1800 tons timber, and class six years. She is well adapted for Government Emigration. — For particulars apply to

CUNARD, MUNN,

A most superior well-seasoned

NEW SHIP

About 800 tons O. M., 900 tons N. M.
Lately launched at Bathurst, N. B., in 1849, month. Built on the model and plan of the "William Rennie," of Liverpool.

Also,

A SHIP,

Of about 1000 tons

Now building at Bathurst, New Brunswick. — For further particulars apply to

CUNARD, MUNN,

held up by ... and has just come home; ... model: lying in Queen's Dock.—For further ... apply to

CUNARD, MUNN, & CO., Brokers.

The ... Brig.

BATTUS,

218 tons.

Prince Edward Island last Autumn; kneed or 4 years; lying in Queen's Dock.—For particulars apply to

CUNARD, MUNN, & CO., Brokers.

The beautiful clipper Barque

BONITO,

267 tons N. M., 370 tons O. M.

111 feet 8-10ths.
23 feet 8-10ths.
12 feet 4-10th.
Built at St. John, N. B., in October last; with iron tanks, and her stores are very ample; lying in Queen's Dock.—For particulars apply to

CUNARD, MUNN, & CO., Brokers.

The beautiful new Barque

KAFFIR

246 tons register.

111 feet 9-10ths.
21 feet 5-10ths.
13 feet.
Built this season at St. John, N. B., in a celebrated Aberdeen clipper, and sails fast: lying in Brunswick Deck.—For particulars apply to

CUNARD, MUNN, & CO., Brokers.

A splendid Clipper

NEW SHIP,

out 930 tons N. M., and 1000 tons O. M.

165 feet.
34 feet 6 inches.
22 feet.
Built in New Brunswick by the builders of the ships "Jemsetjee Cursetjee," "Lady Russel," and "Mer." Although this vessel measures more old-fashioned she will carry well on the old, and extra-ordinary on the new tonnage, being calculated to carry 1000 tons of cargo, and class six years A. 1 at Lloyd's; is fitted for Government Emigrants.—For further particulars apply to

CUNARD, MUNN, & CO., Brokers.

most superior well-seasoned hackmatack

NEW SHIP,

About 800 tons O. M., 900 tons, N. M.

built at Bathurst, N. B., due in Liverpool this month on the model and specification of Mr. ... of Liverpool.

Also,

A SHIP,

Of about 1000 tons;

built at Bathurst, New Brunswick, of similar design.—For further particulars apply to

CUNARD, MUNN, & CO., Brokers.

CUNARD, MUNN, & CO., Brokers.

A NEW BARQUE,

357 tons.

Length for tonnage 113 1/2 feet.
Breadth 23 1/2 feet.
Depth of Hold 17 feet.

Now ready for launching at Dundee; classed nine years A. 1; copper fastened, with half poop 30 feet long; will carry 550 to 600 tons on 15 to 16 feet water; shift without ballast, sail well, and is a handsome, good vessel.—For further particulars apply to

CUNARD, MUNN, & CO., Brokers.

The undernoted Vessel, expected in Liverpool this month.

A SHIP,

787 tons register.

Length 145 feet.
Breadth 28 feet.
Depth 20 feet.

Built at Mirimachi, N. B., and launched in June, 1851, principally of hackmatack, and thoroughly copper fastened.

A BARQUE,

567 tons register.

Length 131 feet.
Breadth 25 feet 6-10ths.
Depth 18 feet 9-10ths.

Built at Mirimachi, N. B., and launched in October last, principally of hackmatack, and thoroughly copper fastened.

A SHIP,

902 tons register.

Length 149 feet 2-10ths.
Breadth 31 feet 2-10ths.
Depth 23 feet 4-10ths.

Built at Mirimachi, N. B., and launched in September, 1850, principally of hackmatack, thoroughly copper fastened, and partly iron kneed.

A BARQUE,

741 tons register.

Length 140 feet 9-10ths.
Breadth 28 feet 9-10ths.
Depth 21 feet.

Built at St. John, New Brunswick, in July, 1850; principally of hackmatack aloft; essentially copper fastened, and has, besides a full poop and top gallant fore-castle, a large substantial house on the main deck, suitable for passengers.—For further particulars apply to

CUNARD, MUNN, & CO.

BROKERS,

10, 12, 14, 16, 18, 20, 22, 24, 26, 28, 30, 32, 34, 36, 38, 40, 42, 44, 46, 48, 50, 52, 54, 56, 58, 60, 62, 64, 66, 68, 70, 72, 74, 76, 78, 80, 82, 84, 86, 88, 90, 92, 94, 96, 98, 100, 102, 104, 106, 108, 110, 112, 114, 116, 118, 120, 122, 124, 126, 128, 130, 132, 134, 136, 138, 140, 142, 144, 146, 148, 150, 152, 154, 156, 158, 160, 162, 164, 166, 168, 170, 172, 174, 176, 178, 180, 182, 184, 186, 188, 190, 192, 194, 196, 198, 200, 202, 204, 206, 208, 210, 212, 214, 216, 218, 220, 222, 224, 226, 228, 230, 232, 234, 236, 238, 240, 242, 244, 246, 248, 250, 252, 254, 256, 258, 260, 262, 264, 266, 268, 270, 272, 274, 276, 278, 280, 282, 284, 286, 288, 290, 292, 294, 296, 298, 300, 302, 304, 306, 308, 310, 312, 314, 316, 318, 320, 322, 324, 326, 328, 330, 332, 334, 336, 338, 340, 342, 344, 346, 348, 350, 352, 354, 356, 358, 360, 362, 364, 366, 368, 370, 372, 374, 376, 378, 380, 382, 384, 386, 388, 390, 392, 394, 396, 398, 400, 402, 404, 406, 408, 410, 412, 414, 416, 418, 420, 422, 424, 426, 428, 430, 432, 434, 436, 438, 440, 442, 444, 446, 448, 450, 452, 454, 456, 458, 460, 462, 464, 466, 468, 470, 472, 474, 476, 478, 480, 482, 484, 486, 488, 490, 492, 494, 496, 498, 500, 502, 504, 506, 508, 510, 512, 514, 516, 518, 520, 522, 524, 526, 528, 530, 532, 534, 536, 538, 540, 542, 544, 546, 548, 550, 552, 554, 556, 558, 560, 562, 564, 566, 568, 570, 572, 574, 576, 578, 580, 582, 584, 586, 588, 590, 592, 594, 596, 598, 600, 602, 604, 606, 608, 610, 612, 614, 616, 618, 620, 622, 624, 626, 628, 630, 632, 634, 636, 638, 640, 642, 644, 646, 648, 650, 652, 654, 656, 658, 660, 662, 664, 666, 668, 670, 672, 674, 676, 678, 680, 682, 684, 686, 688, 690, 692, 694, 696, 698, 700, 702, 704, 706, 708, 710, 712, 714, 716, 718, 720, 722, 724, 726, 728, 730, 732, 734, 736, 738, 740, 742, 744, 746, 748, 750, 752, 754, 756, 758, 760, 762, 764, 766, 768, 770, 772, 774, 776, 778, 780, 782, 784, 786, 788, 790, 792, 794, 796, 798, 800, 802, 804, 806, 808, 810, 812, 814, 816, 818, 820, 822, 824, 826, 828, 830, 832, 834, 836, 838, 840, 842, 844, 846, 848, 850, 852, 854, 856, 858, 860, 862, 864, 866, 868, 870, 872, 874, 876, 878, 880, 882, 884, 886, 888, 890, 892, 894, 896, 898, 900, 902, 904, 906, 908, 910, 912, 914, 916, 918, 920, 922, 924, 926, 928, 930, 932, 934, 936, 938, 940, 942, 944, 946, 948, 950, 952, 954, 956, 958, 960, 962, 964, 966, 968, 970, 972, 974, 976, 978, 980, 982, 984, 986, 988, 990, 992, 994, 996, 998, 1000.

Who have also for Sale by Private Treaty, British and Colonial built vessels, from 100 to 1,500 tons.

LIVERPOOL, 4TH AUGUST, 1852.

