

## Technical and Bibliographic Notes / Notes techniques et bibliographiques

Canadiana.org has attempted to obtain the best copy available for scanning. Features of this copy which may be bibliographically unique, which may alter any of the images in the reproduction, or which may significantly change the usual method of scanning are checked below.

- Coloured covers /  
Couverture de couleur
- Covers damaged /  
Couverture endommagée
- Covers restored and/or laminated /  
Couverture restaurée et/ou pelliculée
- Cover title missing /  
Le titre de couverture manque
- Coloured maps /  
Cartes géographiques en couleur
- Coloured ink (i.e. other than blue or black) /  
Encre de couleur (i.e. autre que bleue ou noire)
- Coloured plates and/or illustrations /  
Planches et/ou illustrations en couleur
- Bound with other material /  
Relié avec d'autres documents
- Only edition available /  
Seule édition disponible
- Tight binding may cause shadows or distortion  
along interior margin / La reliure serrée peut  
causer de l'ombre ou de la distorsion le long de la  
marge intérieure.
- Additional comments /  
Commentaires supplémentaires:

Canadiana.org a numérisé le meilleur exemplaire qu'il lui a été possible de se procurer. Les détails de cet exemplaire qui sont peut-être uniques du point de vue bibliographique, qui peuvent modifier une image reproduite, ou qui peuvent exiger une modification dans la méthode normale de numérisation sont indiqués ci-dessous.

- Coloured pages / Pages de couleur
- Pages damaged / Pages endommagées
- Pages restored and/or laminated /  
Pages restaurées et/ou pelliculées
- Pages discoloured, stained or foxed/  
Pages décolorées, tachetées ou piquées
- Pages detached / Pages détachées
- Showthrough / Transparence
- Quality of print varies /  
Qualité inégale de l'impression
- Includes supplementary materials /  
Comprend du matériel supplémentaire
- Blank leaves added during restorations may  
appear within the text. Whenever possible, these  
have been omitted from scanning / Il se peut que  
certaines pages blanches ajoutées lors d'une  
restauration apparaissent dans le texte, mais,  
lorsque cela était possible, ces pages n'ont pas  
été numérisées.

# INTERNATIONAL



5

# RAILWAY GUIDE

## GIVING THE TIME-TABLES

OF THE

## Grand Trunk Railway of Canada

AND OF ALL RAILWAYS CONNECTING

## CANADA AND THE UNITED STATES

1867.

JUNE,

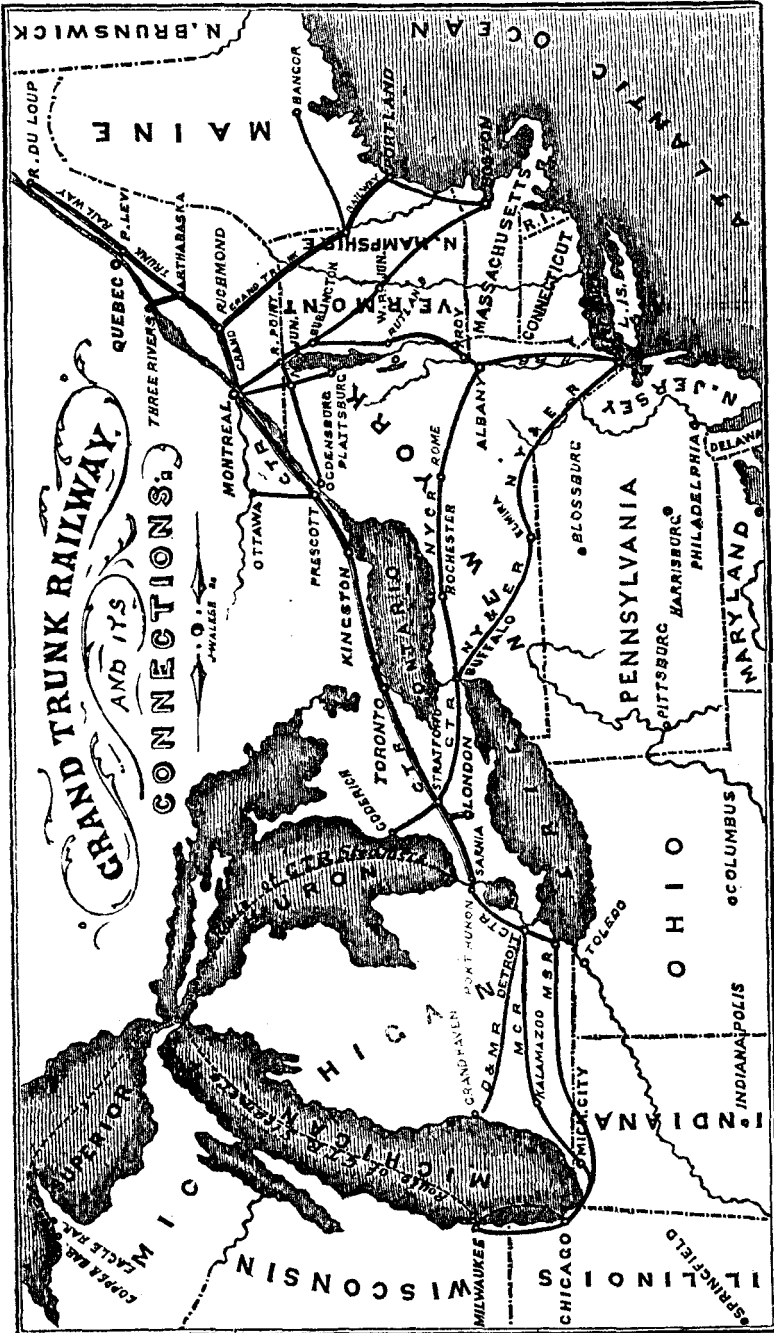
1867.

### CONTENTS.

	Pages		Pages
Time and Distance Indicator .....	38	London and Port Stanley .....	28
Officers of the Grand Trunk Railway ...	15	Ottawa and Prescott .....	28
Railway and Steamboat Connections ...	39	Toronto and Collingwood .....	29
Stage Connections .....	40	Detroit and Cincinnati .....	29
Portland and Montreal .....	16, 17	Skowhegan and Portland .....	29
Montreal and Toronto .....	18, 19	Brockville and Sand Point .....	30
Toronto and Detroit .....	20, 21	Rouse's Point and Ogdensburg .....	30
Montreal, Lachine and Province Line ..	20, 21	St. John's and Waterloo .....	31
Buffalo and Detroit .....	22, 23	Halifax and Truro .....	31
Arthabaska and Three Rivers .....	22	Halifax and Windsor .....	31
Montreal and Rouse's Point .....	23	Port Dalhousie and Buffalo .....	32
Buffalo and Goderich .....	24, 25	Suspension Bridge and Windsor .....	32, 33
New York and Buffalo (Erie Railway) ..	24, 25	Toronto and Hamilton .....	32, 33
Montreal, Quebec and Riviere du Loup ..	26	Sumner and Mechanic's Falls .....	33
Detroit and Chicago (Mich. Southern) ..	27	Detroit and Chicago (Michigan Central) ..	34, 35
Detroit and Milwaukee .....	27	Boston, Portland and St. John, N. B. ...	34
Chicago and Milwaukee .....	27	Portland and Boston .....	35
Montreal and Ottawa .....	27	St. Andrews and Woodstock Road .....	36
Port Hope and Lindsay .....	28	Portland, Boston and New York .....	36
Port Hope and Peterboro .....	28	St. John and Shediac .....	37

MONTREAL:

PUBLISHED BY M. LONGMOORE & CO.,  
PRINTING HOUSE, 31 GREAT ST. JAMES STREET.



Entered according to Act of Provincial Legislature, in the year one thousand eight hundred and sixty-five, by JOHN TAYLOR, in the Office of the Registrar of the Province of Canada.

# ROYAL INSURANCE COMPANY.

FIRE AND LIFE.

CAPITAL - - - - - TWO MILLIONS STERLING

## FIRE DEPARTMENT.

Nearly the Largest Insurance Company in the World.

*Annual Income £500,000.*

Invested Funds in hand to meet Claims, over £800,000.

### *Advantages to Fire Insurers.*

The Company is enabled to direct the attention of the Public to the advantages afforded in this branch.

- 1st. Security unquestionable.
- 2nd. Revenue of almost unexampled magnitude.
- 3rd. Every description of property insured at moderate rates.
- 4th. Promptitude and Liberality of Settlement.

## LIFE DEPARTMENT.

LARGE LIFE BONUSES DECLARED IN 1855 AND 1860.

Two per cent. per Annum on Sum Assured.

Being *THE LARGEST BONUS* ever continuously declared by any Office.

### *Boons to Life Assurers:*

The Directors invite attention to a few of the advantages the "Royal" offers to its Life Assurers:—

- 1st. The Guarantee of an ample Capital, and Exemption of the Assured from Liability of Partnership.
- 2nd. Moderate Premiums.
- 3rd. Small charge for Management.
- 4th. Prompt Settlement of Claims.
- 5th. Days of Grace allowed with the most liberal interpretation.
- 6th. Large Participation of Profits by the Assured, amounting to TWO-THIRDS of their net amount, every five years, to Policies then two entire years in existence.

H. L. ROUTH, Agent, Montreal.

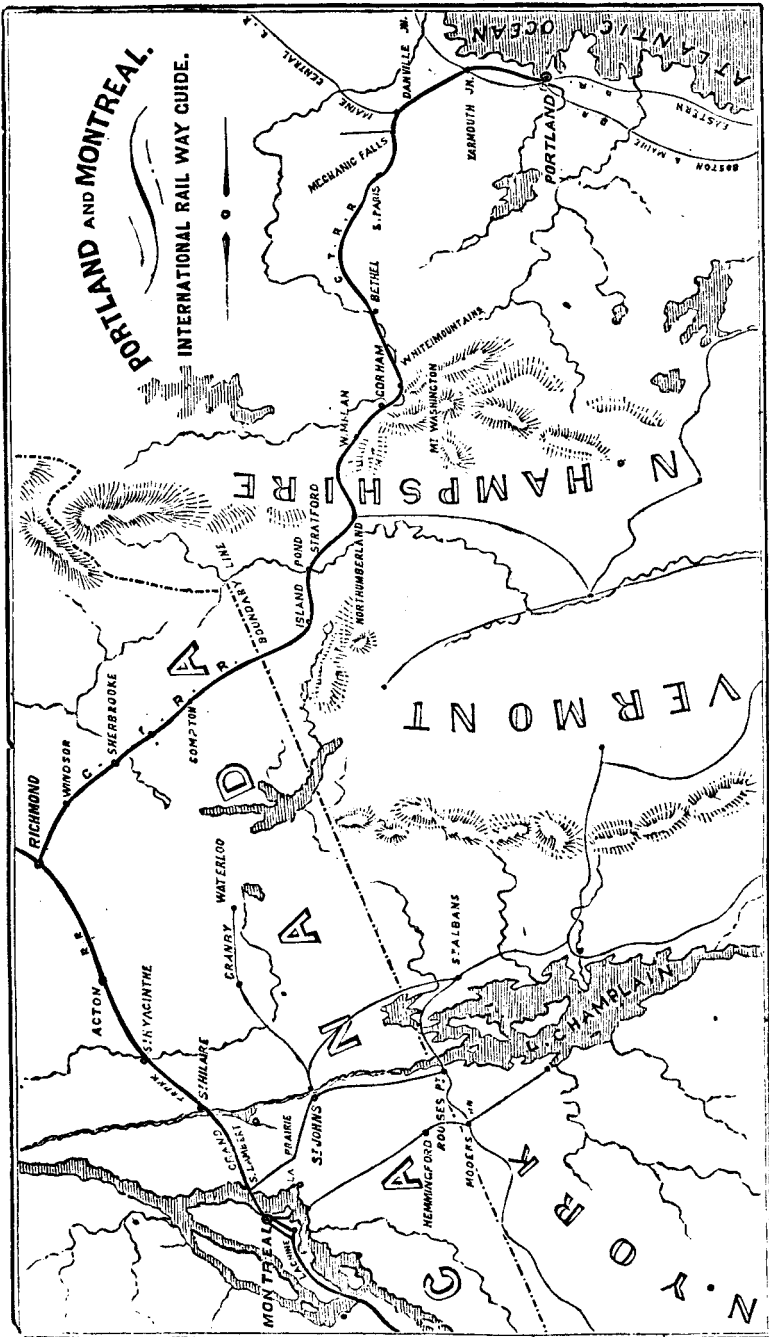
MESSRS. FORSYTH, BELL & CO., Agents, Quebec.

MR. GEO. B. HOULISTON.....	Three Rivers
MR. JAMES MORGAN.....	Sorel.
MR. W. COOTE.....	St. Johns
MR. R. J. LONSDALL.....	Lennoxville.
MR. ANDREW THOMSON.....	Belleville.
MR. HENRY J. FREIL.....	Ottawa.
MR. R. A. YOUNG.....	Aylmer.
MR. JOHN DOWSLEY.....	Prescott.
MR. GEO. EASTON.....	Brockville
MESSRS. DEACON & MORRIS.....	Perth.
MR. M. W. STRANGE.....	Kingsion.

F. H. HEWARD, Agent, Toronto

MR. WM. BELLHOUSE.....	Hamilton.
MR. F. B. BEDDOME.....	London.
MR. G. M. GOODEVE.....	Cobourg.

# PORTLAND AND MONTREAL. INTERNATIONAL RAIL WAY GUIDE.



## S T . L A W R E N C E H A L L ,

Great St. James Street,

MONTREAL.

H. HOGAN,.....PROPRIETOR.

**T**his First-class Hotel, the largest in Montreal, and which has long been regarded by the Travelling Public as the most popular and fashionable resort, is situated opposite the Post Office, and contiguous to the Banks, French Cathedral, or Church Ville Marie, the Champ de Mars, where the Troops are reviewed, and other Public Institutions. It has been under the charge of its present Proprietor for over fifteen years. A large part of the Hall was engaged by the Government for the Suite of His Royal Highness the Prince of Wales on his visit to this city. The Proprietor would take this opportunity of thanking his numerous friends for past favors, and to inform them that he has during the past winter built a large addition to the Hall, and hopes in future to be able to accommodate all who may favor his establishment.

Telegraphic communication from the Hotel.

4.7

## R U S S E L L ' S H O T E L ,

PALACE STREET,

Q U E B E C , C . E .

**T**he above Hotel, known all over the Province, is still open for the accommodation of Guests, and every attention continues to be paid to those who favor it with their patronage.

THE ST. LOUIS HOTEL, ST. LOUIS STREET,

Is also open. Extensive alterations have been made, and it is now equal to any Hotel in the Province. There is house commodation for a much larger number of guests than formerly.

Carriages in summer, and Sleighs in Winter

Always at hand to convey Visitors to the various places of interest, such as the

Montmorency Falls,

Plains of Abraham,

Chaudiere Falls,

The Indian Village of Lorette, &amp;c., &amp;c.

T E R M S M O D E R A T E .

5.7

## A M E R I C A N H O U S E ,

47 &amp; 49 ST. HENRY STREET,

AND

20, 22, &amp; 24 ST. JOSEPH STREET.

**T**he Proprietor of the above well known Hotel would beg to announce to his friends, and the travelling public generally, that he has enlarged the old premises by the addition of the large and commodious house heretofore known as the "Exchange Hotel," and the whole has undergone *extensive and thorough repairs*.

The House fronts on St. Joseph Street, which is a continuation of Notre Dame, and is but four doors from McGill Street, is near Great St. James, St. Paul, and all the principal business streets of the city. Being very *centrally located*, with regard to all places of interest about town, it cannot fail to commend itself to parties travelling either on business or for pleasure. In making the repairs, the Proprietor has taken great pains to provide *every comfort for his guests*. The whole House is newly furnished, and the Proprietor feels that he can offer to his guests accommodations that cannot fail to give satisfaction. Connected with the House are the *best yard and stables in Montreal*. Porters always in attendance at the Depot and Steamboat landings with Omnibuses to the House.

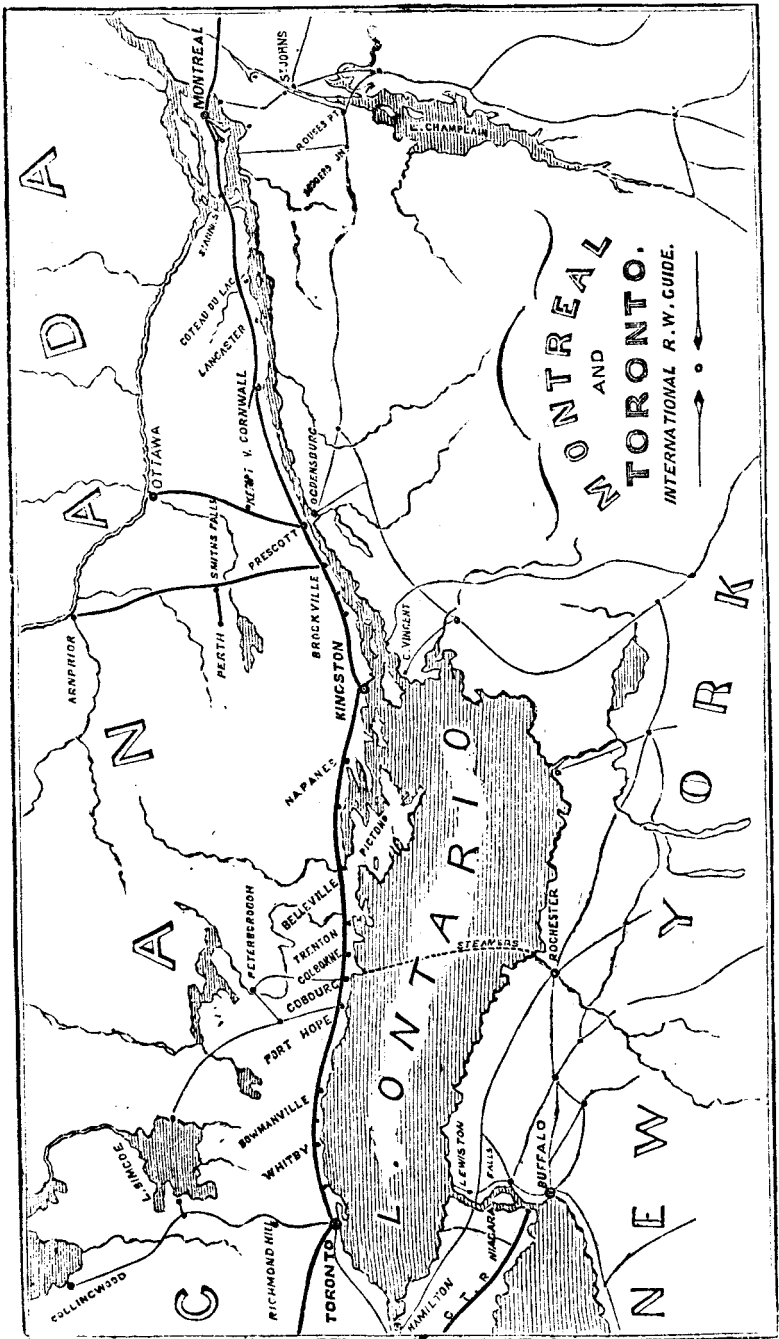
Price, \$1.50 per day.

C. S. BROWNE,

Proprietor.

MONTREAL, C.E., March 1st, 1867.

8.7



**WADDELL & PEARCE,**  
**HARDWARE COMMISSION MERCHANTS,**  
 AND IMPORTERS OF  
**IRON, STEEL, METALS, AND RAILWAY SUPPLIES,**  
 No. 27 St. John Street, Montreal, C.E.

**Sole Agents in Canada and British Provinces of N.A. for**

Charles Cammell & Co., (Limited.) "Cyclops" Steel and Iron Works, Sheffield.  
 The Bowling Iron Company (near) Bradford, Yorkshire.  
 The Yorkshire Engine Company (Limited) Sheffield, Yorkshire.  
 Patent Shaft and Axle Tree Company (Limited) Brunswick Iron Works, Wednesbury.  
 Lloyd & Lloyd, Albion Tube Works, Birmingham.  
 S. Moulton & Co., Kingston India Rubber Mills, Bradford.  
 Walker & Hall, Electro Plate Works, Sheffield.  
 John Trippett & Brother, Shipping Agents, Liverpool and New York.  
 Wm. F. Sim & Co., Pentpool Tin, and Pontypool "cold rolled" Canada Plates and Metals. Best Refined (S Crown) Bar Iron, &c.  
 The Hart Manufacturing Company (Successors to Bliven, Mead & Co.), New York.  
 Green's Patent Tube Company (Limited), Sole Manufacturers of Green's Patent "Solid Drawn" Brass Tubes.  
 Hockley, Bolt, Nut, and Rivet Company, Birmingham.

N.B.—A stock of Charles Cammell & Co.'s Warranted Cast and Spring Steel and "Cyclops" Files constantly on hand.

5.7.P

**THE CANADIAN EXPRESS COMPANY**

Forward Merchandise, Money, and Packages of every description, collect Bills with Goods, Notes and Drafts, throughout the

**CANADAS AND THE UNITED STATES,**

Running daily (Sundays excepted) over the entire line of the

**GRAND TRUNK RAILWAY,**

THE GREAT WESTERN (Toronto and Hamilton),

PRESCOTT & OTTAWA, BROCKVILLE & OTTAWA, and PORT HOPE & PETERBOROUGH RAILROADS,

In charge of Special Messengers.

Packages and Freights forwarded by the Montreal Ocean Steamship Company to and from all parts of Europe,

Debenture Goods or Goods in Bond will be promptly attended to and forwarded with despatch. Invoices should be sent with all Goods going to the United States.

Montreal—D. T. IRISH, Agent.  
 Portland—J. G. PRINDLE, "  
 Toronto—M. H. IRISH, "  
 Hamilton—J. D. IRWIN, "

Kingston—J. C. CLARK, Agent.  
 Ottawa—W. H. SAWYER, "  
 Quebec—W. C. SCOTT, "

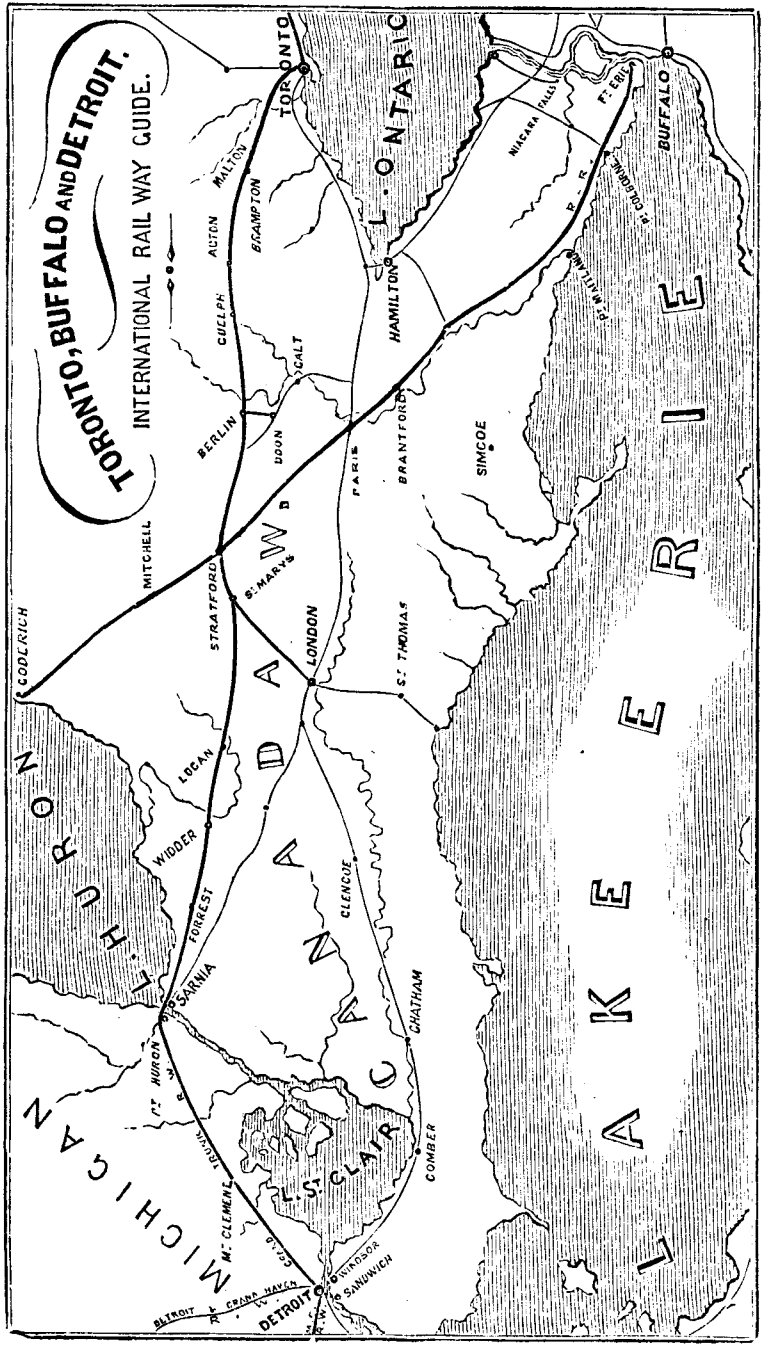
Liverpool, England—No. 22 Tower Buildings, Water Street, ALEX. BLACKWOOD, Agent.

6.7.P

G. CHENEY, Supt.



# TORONTO, BUFFALO AND DETROIT. INTERNATIONAL RAIL WAY GUIDE.



T  
A  
K  
E  
R  
I  
E

# THE EUROPEAN ASSURANCE SOCIETY

OF LONDON, ENGLAND,

*Empowered by Special Acts of British and Canadian Parliaments.*

ESTABLISHED—A. D. 1849.—INCORPORATED, A. D. 1854.

FOR LIFE ASSURANCE, ANNUITIES, ENDOWMENTS AND THE GUARANTEE OF FIDELITY IN POSITIONS OF TRUST.

Also for granting special facilities for the Assurance of the Lives of Naval and Military Officers, Residents in Tropical Climates, and Invalids.

**AUTHORISED CAPITAL, - - - ONE MILLION STERLING.**

IN 400,000 SHARES OF £2 10s. *od.* STERLING EACH.

**SUBSCRIBED CAPITAL, - - - - - £800,000 STERLING.**

OF WHICH ONE-FIFTH (10s. per Share) IS PAID UP.

NUMBER OF SHAREHOLDERS EXCEEDS 1900.

The Annual Premium Revenue is over £330,000 Stg.

HEAD OFFICE: LONDON, ENGLAND.

*British Branches:* Edinburgh, Dublin, Birmingham, Manchester, Liverpool, Ashton, Bristol.

*Colonial and Foreign Branches:* Montreal, Sydney, Melbourne, Adelaide, South Africa,—Capetown, Bombay, Mauritius,—Port Louis, and Hamburg, with Agencies throughout Great Britain and the Continent of Europe.

THE

ROYAL NAVAL



AND MILITARY

LIFE DEPARTMENT

IS UNDER THE SPECIAL PATRONAGE OF

HER MOST GRACIOUS MAJESTY THE QUEEN.

VICE-PATRONS:

FIELD-MARSHAL HIS ROYAL HIGHNESS THE DUKE OF CAMBRIDGE, K.G., K.P.  
G.C.B., G.C.M.G., General Commander-in-Chief.

HIS GRACE THE DUKE OF RICHMOND.

THE RIGHT HON. EARL GREY.

THE RIGHT HON. SIR STAFFORD NORTHCOTE, BART., M.P., President, Board of Trade.

VISCOUNT EVERSLEY, A.D.C. to the Queen.

ADMIRAL SIR JAMES ALEX. GORDON, G.C.B.

GENERAL SIR JOHN F. BURGOYNE, BART., G.C.B., Inspector-General of Engineers.

GENERAL SIR HEW D. ROSS, G.C.B., R.A.

MAJOR-GENERAL LORD WILLIAM PAULET, K.C.B., Adjutant-General.

LIEUT.-GENERAL SIR JAMES HOPE GRANT, G.C.B., Quartermaster-General.

LIEUT.-GENERAL WILLIAM FRED. FORSTER, K.H., Military Secretary.

CHAIRMAN OF THE LONDON BOARD: SIR FREDERIC SMITH, K.H., F.R.S.

MANAGER, HENRY LAKE, ESQ. SECRETARY, J. HAMER OWENS, ESQ.

*Head Office in Canada: 71 Great St. James Street,  
MONTREAL.*

DIRECTORS IN CANADA,

(All of whom are fully qualified Shareholders.)

HENRY THOMAS, Esq., (Messrs. Thomas, Thibaudeau & Co.,) Director, Bank of Montreal, Chairman.

HUGH ALLAN, Esq., Montreal.

CHAS. JOHN BRYDGES, Esq., Managing Director of the Grand Trunk Railway, Montreal.

THE HON. CHAS. ALLEYN, Q.C., M.P.P., Quebec.

FRANCOIS LECLAIRE, Esq., (F. & J. Leclaire & Co.,) Director of the Banque du Peuple, Montreal.

WILLIAM WORKMAN, Esq., President City Bank, Montreal.

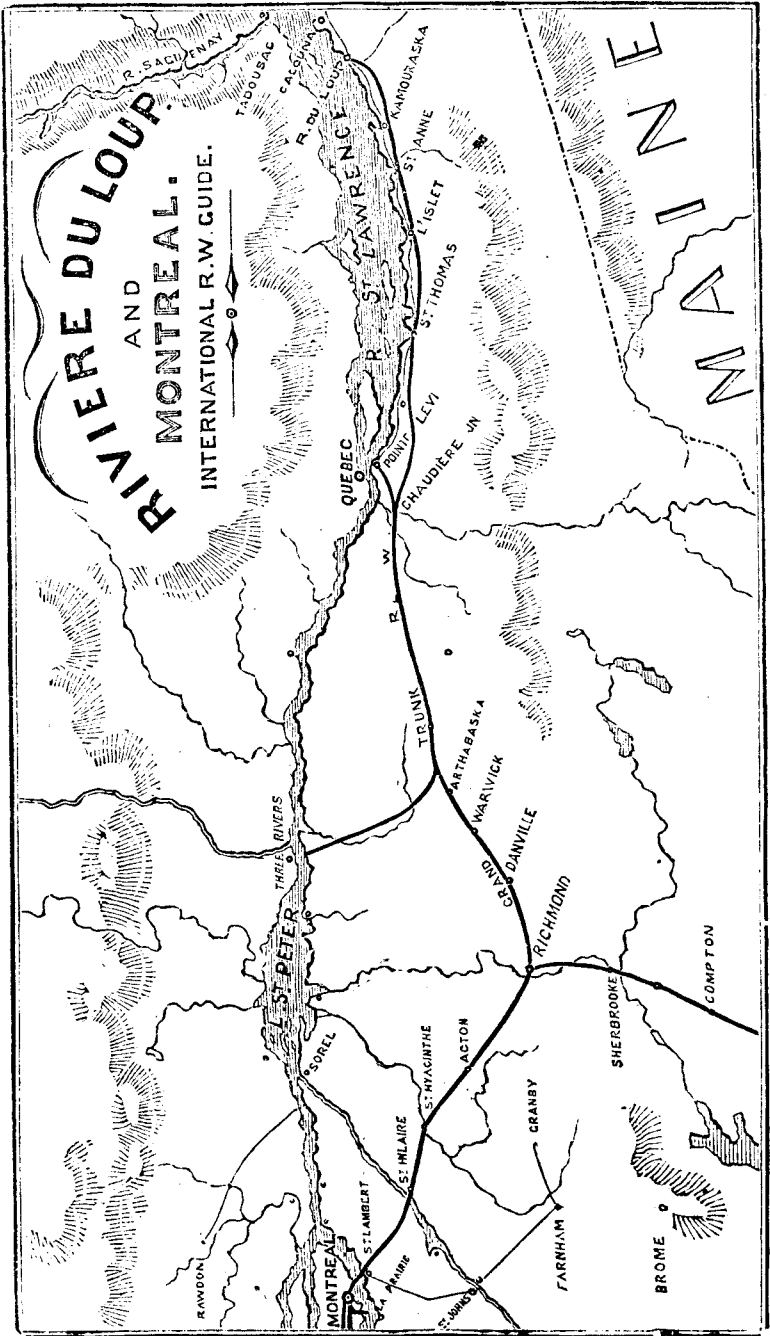
*Manager for Canada—EDWARD RAWLINGS.*

# RIVIERE DU LOUP

AND

# MONTREAL.

INTERNATIONAL R.W. GUIDE.



THE INTRODUCTION OF  
**PERRY DAVIS' PAIN KILLER!**

TO THE SUFFERING HUMANITY OF THIS AGE,

Has relieved more Pain, and caused more real Joy than any one thing that can be named  
**IT IS A "BALM FOR EVERY WOUND."**

Our first Physicians use it, and recommend its use; the Apothecary finds it first among the medicines called for, and the Wholesale Druggist considers it a leading article of his trade. All the dealers in medicine speak alike in its favor; and its reputation as a Medicine of Great Merit and Virtue is fully and permanently established, and it is

**THE GREAT FAMILY MEDICINE OF THE AGE.**

Every Traveller should have a Bottle, in case of Sudden Attacks of Disease.

**TAKEN INTERNALLY IT CURES** Sore Throat, Sudden Colds, Coughs, &c. Weak Stomach, General Debility, Nursing Sore Mouth, Canker, Liver Complaint, Dyspepsia or Indigestion, Cramp and Pain in Stomach, Bowel Complaint, Painters' Colic, Asiatic Cholera, Diarrhoea and Dysentery.

**TAKEN EXTERNALLY IT CURES** Felons, Boils and Old Sores, Severe Burns and Scalds, Cuts, Bruises and Sprains, Swellings of the Joints, Ringworm and Tetter, Broken Breast, Frosted Feet and Chilblains, Toothache, Pain in the Face, Neur'gia, and Rheumatism.

**PAIN KILLER** taken internally should be adulterated with milk or water, and sweetened with sugar, if desired, or made into a syrup with molasses. For a Cough and Bronchitis, a few drops on sugar eaten, will be found more effective than anything else. For Sore Throat gargle the Throat with a mixture of Pain Killer and water, and the relief is immediate and the cure positive.

It should not be forgotten that the Pain Killer is equally as good to take internally as to use externally. Each bottle is wrapped with full directions for its use.

**SOLD BY ALL MEDICINE DEALERS.**

Depot and Sales Office for Canada--378 St. Paul Street, Montreal.

6.7

**A. RAMSAY & SON,**

IMPORTERS OF OILS, PAINTS, VARNISHES, BRUSHES, &c.,

Rolled, Rough and Polished Plate Glass, English & German Sheet Glass,

GLAZIERS' DIAMONDS, GOLD & SILVER LEAF BRONZES, &c.,

37, 39 & 41, Recollet Street, MONTREAL.

10.7

**CHEAP ENGLISH PAPER WAREHOUSE.**

**ROBT. WEIR & CO.,**

PAPER MAKERS, WHOLESALE STATIONERS

PRINTERS AND BOOKBINDERS,

Manufacturers of

ACCOUNT BOOKS, ENVELOPES, AND STATIONERY,

39 & 41 Great St: James Street, Montreal.

Importers of the best English Hand-made Papers; Bookbinders' Materials of all kinds.

A large Stock always kept on hand.

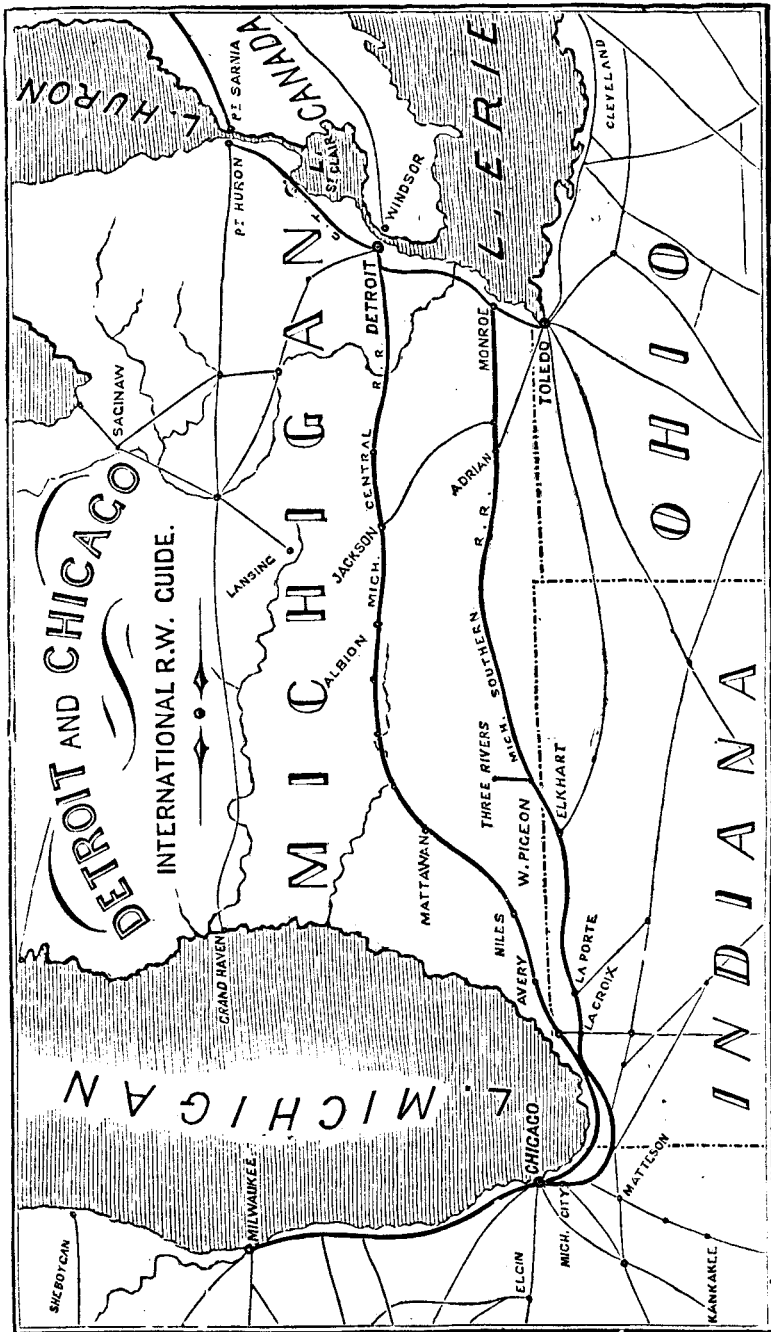
10.7

**W. NOTMAN,**

PHOTOGRAPHER TO THE QUEEN,

11.7.7

*Bleury Street, MONTREAL.*



GRAND TRUNK RAILWAY.  
STEAM COMMUNICATION TO  
HALIFAX, N. S., AND ST. JOHN, N. B.

THE SPLENDID FIRST-CLASS STEAMER

1867



1867

"CARLOTTA"

WILL SAIL REGULARLY BETWEEN

PORTLAND AND HALIFAX

IN CONNECTION WITH

THE GRAND TRUNK RAILWAY,

LEAVING PORTLAND EVERY SATURDAY AT 4 P. M.,  
AND  
HALIFAX EVERY TUESDAY AT 4 P. M.

FARE BETWEEN PORTLAND AND HALIFAX, \$6.00 GOLD.

TO

ST. JOHN, N. B.

THE STEAMER "NEW BRUNSWICK" OR "NEW ENGLAND"

WILL LEAVE

Portland, calling at Eastport, on Mondays and Thursdays, at 5 P. M.,  
AND RETURN

From St. John, N.B., for Eastport and Portland, on Mondays & Thursdays at 8 A.M.

Through Tickets issued, and Freight shipped on Through Bills of Lading, to and from the principal Stations on the Grand Trunk Railway, at lower rates than by any other Route.

Montreal, May 27th, 1867.

C. J. BRYDGES, *Managing Director.*

COMMISSION MERCHANTS.

KIRKWOOD, LIVINGSTONE & Co.,

PRODUCE, LEATHER AND GENERAL COMMISSION  
MERCHANTS,

503 St. Paul Street, Montreal.

Consignments of :

Grain,

Flour,

Ashes,

Butter,

Pork,

Leather, &c., &c.,

Carefully and promptly realized and returns promptly made.

ADVANCES:-Cash advances made and Drafts authorized on all descriptions of Produce consigned for sale in this or Foreign Markets.

10.7

COMMISSION MERCHANTS.

HELIWELL & MACPHIE

Commission Merchants and Brokers,  
For the sale and purchase of Flour, Grain,  
Provisions, Ashes, Salt, Fish & Fish Oils, &c.,  
Office:—Corner St Nicolas & St. Paul Streets,  
MONTREAL.

6.7.P

CAMPBELL BRYSON,

COMMISSION MERCHANT,

And dealer in

HIDES, OIL, LEATHER, FINDINGS, &c.,  
Nos. 9 & 11 Lemoine Street,

MONTREAL.

Liberal Advances made on Consignments.  
9.7

CABINETMAKER.

G. ARMSTRONG,  
CABINET-MAKER,

Furniture Warerooms on corner of Victoria  
Square and Craig Street, Montreal. 10.7

C. H. BALDWIN & CO.,

COMMISSION MERCHANTS,

Importers and Wholesale Dealers in

WINES, GROCERIES, CIGARS, &c.,  
18 Lemoine Street,

MONTREAL.

10.7

## GRAND TRUNK RAILWAY.

1867.

PARIS EXHIBITION

1867.

## COOK'S ANGLO-AMERICAN AND EUROPEAN TOURS.

RETURN TICKETS TO PARIS AND BACK, For the Double Journey, from the UNITED STATES and CANADA, by the Montreal Ocean Mail Line, via Liverpool, and the Montreal S. S. Co.'s Glasgow Line, at Fares varying from \$140 to \$180 in Gold, as per following programme.

## TABLE OF FARES.

Line of Service across the Atlantic.	Fare to LIVERPOOL, and back.	Fare to GLASGOW and back.	Fare to Paris, and back, via Liverpool, First Cabin, & First Class Railway.	Fare to Paris, and back, via Liverpool, Second Class Railway.	Fare to Paris, and back, via Liverpool, First Cabin, & First Class Railway.	Fare to Paris, and back, via Liverpool, First Cabin, & Second Class Railway.	Fare to Paris, and back, via Glasgow, First Cabin, & First Class Railway.	Fare to Paris, and back, via Glasgow, First Cabin, & Second Class Railway.
Montreal Ocean Mail Line from Portland or Quebec Do. 2nd Cabin.	\$ 150	..	\$ 176	\$ 170	\$ 181	\$ 173	..	..
Montreal S. S. Co.'s Glasgow Line from Portland or Quebec.....	..	120	..	..	..	..	170	156

Single Journey Tickets are also issued to Paris, full particulars of which may be obtained of the Agents.

## SAILINGS OF STEAMERS AND REGULATIONS FOR RETURNING.

The Montreal Ocean Company's Canadian Mail Steamers—Line of Hugh and Andrew Allan, Montreal.

The Steamers of this Line, by which the Tickets are available, leave Portland every Saturday to May 4, and after that date to October, leave Quebec, for Liverpool.

The Tickets issued for this Line will be available for returning by the Lines of the same Company, from Liverpool to Glasgow, or by the "Anchor Line" of Handyside and Hendersons, from Glasgow, at any time within Six Months from date of departure. Steamers leave Liverpool every Thursday for New York; Glasgow for Canada, every alternate Thursday; and Glasgow for New York (Anchor Line) every Friday.

The Steamers of this Line are the

AUSTRIAN	MORAVIAN	BELGIAN
NESTORIAN	HIBERNIAN	NORTH AMERICAN
PERUVIAN	NOVA SCOTIAN	DAMASCUS

IMPORTANT NOTICE—APPLICABLE TO ALL LINES OF STEAMERS:—Holders of Cook's Tickets by the above Lines of Steamers will be treated precisely the same as ordinary passengers, and will have equal accommodation in the Saloon; but to ensure comfort it is necessary to give as long notice as possible to the Agent, to enable him to secure State Rooms—they being all allotted according to priority of application. This Notice applies equally to leaving both sides of the Atlantic; and all passengers will be subject to the usual regulations of the various Companies. The holders of these Tickets will be entitled to all the privileges and facilities afforded by

The Montreal Ocean Steamship Company's Glasgow Line of Hugh and Andrew Allan, Montreal.

Until May 4, the Steamers of this Line leave PORTLAND for Glasgow every alternate Saturday, returning from Glasgow every Thursday. After May 4, from QUEBEC, returning from Glasgow every alternate Thursday, from May 11 to October.

The Tickets are available for returning by any Steamer of the service for Six Months after date of departure; or they will be available for returning by the same Company's Ship's from Liverpool to Portland or Quebec, on payment of 20 dollars extra at Liverpool; or by the "Anchor Line" of Handyside and Hendersons, from Glasgow to New York, without extra charge, at any time within 6 Months.

The Steamers of this Line are:

ST. DAVID	ST. GEORGE
ST. ANDREW	ST. PATRICK

MR. COOK'S TOURIST AND EXCURSION TICKETS, for Travelling in GREAT BRITAIN, FRANCE, BRITANNY, NORMANDY, GERMANY, SWITZERLAND, ITALY, ETC.; being the only system in operation by which passengers can book through from Great Britain to Switzerland, Italy, &c., and back again, on one payment; thus obviating the loss and inconvenience arising through passengers traveling in a Foreign Country having to re-book at various points en route; they will also be entitled to avail themselves of Mr. Cook's Hotel arrangements, by which accommodation is secured in PARIS DURING THE EXHIBITION for 2000 VISITORS PER NIGHT, at fixed charges, varying from 8 to 20 Francs per day;—a similar arrangement is also made for Mr. Cook's passengers in every City and place of interest combined in his Continental Tours.

RETURN TICKETS FOR THE AMERICAN RAILWAYS will be issued by the regular Agents of the principal Companies for travelling from various parts of the STATES and CANADA to the Port of embarkation in connection with Mr. COOK'S TICKETS.

For further particulars, and to secure passages, apply to the Agents of the Grand Trunk Railways of Canada, the Michigan Central, Erie, Pennsylvania Central, Atlantic and Great Western, Little Miami, Baltimore and Ohio, Philadelphia, Wilmington and Baltimore, and Vermont Central Railways; also to the Agents of E. P. Beach, in various parts of the States, and to

E. P. BEACH, 175, Broadway, New York;  
J. WARRACK, Dearborn Street, Chicago;  
Mr. FOGG, Planters' House, St. Louis;  
J. L. BUTLER, 3 Union Merchants' Ex'ce, St. Ls.;

CAHN & WALKER, Gibson House, Cincinnati;  
Mr. TUGBY, Bazaar, near Goat Island, Niagara;

FOWLER & WELLS, 389, Broadway, New York. All communications for Mr. COOK, to be addressed to 389, BROADWAY, NEW YORK.

TOURIST TICKETS FROM EUROPE TO AMERICA, issued on similar terms, full particulars of which may be obtained of THOS. COOK, Tourist Office, 98, Fleet-Street, London.

# Grand Trunk Railway Company of Canada.

## PRESIDENT:

EDWARD W. WATKIN, Esq., M. P., London.

## CHAIRMAN OF CANADIAN BOARD:

Hon. JAMES FERRIER, M. L. C., Montreal.

## MANAGING DIRECTOR:

CHARLES JOHN BRYDGES, Esq., Montreal,

## OFFICERS:

JOSEPH HICKSON, . . . . .	Secretary and Treasurer.
RICHARD EATON, . . . . .	Locomotive Superintendent.
J. F. BARNARD . . . . .	Engineer, East of Montreal.
E. P. HANNAFORD . . . . .	“ West “ “
H. SHACKELL . . . . .	Auditor.
F. C. STRATTON, . . . . .	General Eastern Freight Agent, Montreal.
P. S. STEVENSON, . . . . .	General Western Freight Agent, Toronto.
J. TAYLOR, . . . . .	Inspector of Stores, Montreal.
H. W. WALKER, . . . . .	Book Keeper.

## LOCAL SUPERINTENDENTS:

W. J. SPICER, . . . . .	{ Montreal to Detroit. Buffalo to Goderich.
H. BAILEY, . . . . .	{ Montreal to Province Line. Montreal to Portland.
A. S. MACBEAN, . . . . .	{ Montreal to Rouse's Point. Richmond to Quebec and Riviere du Loup.

## AGENCIES:

NEW YORK . . . . .	E. P. BEACH, General Agent, 175 Broadway.
BOSTON . . . . .	{ S. SHACKELL, C. SHUTTER
BANGOR, ME. . . . .	WM. FLOWERS.
OGDENSBURGH . . . . .	C. J. BALDWIN.
BUFFALO . . . . .	GEORGE H. TRYON.
CINCINNATI . . . . .	TAYLOR & BROTHER.
CHICAGO . . . . .	{ JAMES WALSH & J. H. WHITMAN.
MILWAUKEE . . . . .	L. H. KELLOGG.
ST. LOUIS . . . . .	JAMES SMITH.
DETROIT . . . . .	E. REIDY.
HALIFAX, N. S. . . . .	BEN. WEIR.
ST. JOHN, N. B. . . . .	GEO. THOMAS.

## JOHN SHEDDEN,

### CARTAGE AGENT FOR GRAND TRUNK RAILWAY CO.,

AND

### GENERAL FORWARDER.

OFFICES:..... 88 McGill Street, Montreal, C. E.  
 “ ..... 42 Front Street, Toronto, C. W.  
 “ ..... King Street, Hamilton, “  
 “ ..... Richmond Street, London “  
 “ ..... Grand Trunk Railway Freight Office, Galt, C.W.  
 “ ..... do do Detroit, U.S.

Shippers or Consignees of Merchandize will insure *Safety, Economy and Dispatch* in transporting Freight by directing consignments “care of John Shedden” at any of the above mentioned places.

10.7

## CANADA TRUSS FACTORY

### F. GROSS

Surgical Machinist and Elastic Spring Truss maker, inventor and Manufacturer of all kinds of Instruments for Physical Deformities; worker in Brass, Steel and Iron of every description.

36 VICTORIA SQUARE, MONTREAL.

5.7



# PORTLAND TO MONTREAL.

Via Grand Trunk Railway.

[ May 20th.

TOTAL MILES.	STATIONS.	Express.	Express.	Local Trains.
	<b>PORTLAND</b> .....			
	.....Depart	1.10 P. M.	7.00 A. M.	5.30 P. M.
5	Falmouth .....	1.25 "	7.15 "	6.00 "
9	Cumberland.....			
11	Yarmouth .....	1.45 "	7.40 "	6.30 "
12	Yarmouth Junc.....	1.50 "	7.45 "	6.35 "
15	North Yarmouth.....	2.00 "	7.53 "	6.50 "
18	Pownal .....	2.10 "	8.00 "	7.10 "
22	New Gloucester .....	2.25 "	8.10 "	7.35 "
27	<b>DANVILLE Junc.</b> .....	2.40 P. M.	8.30 A. M.	8.05 P. M.
138	<b>BANGOR</b> .....	8.00 P. M.		
	.....Arrive			
33	Empire Road .....	2.55 P. M.	8.45 A. M.	8.35 P. M.
36	Mechanic Falls.....	3.10 "	8.55 "	9.00 "
41	Oxford.....	3.25 "	9.10 "	9.30 "
47	South Paris.....	3.50 "	9.30 A. M.	10.15 P. M.
55	West Paris .....	4.15 "		
62	Bryant's Pond .....	4.35 "		
65	Locke's Mills .....	4.50 "		
70	Bethel.....	5.05 "		
74	West Bethel .....	5.20 "		
80	Gilead.....	5.40 "		
86	Shelburne.....	5.55 "		
91	Gorham.....	6.15 "		
98	Berlin Falls.....	6.40 "		
103	Milan .....	7.00 "		
109	West Milan .....	7.18 "		
116	Stark .....	7.40 "		
122	Northumberland.....	8.00 "		
126	Stratford Hollow .....	8.15 "		
130	Stratford .....	8.25 "		
134	North Stratford.....	8.40 "		
141	Wenlock .....	9.10 "		
149	<b>ISLAND POND</b> { .....	9.30 "		
	.....Arrive			
160	Norton .....	10.45 P. M.	6.00 A. M.	7.30 A. M.
166	Boundary Line.....	11.15 "	6.30 "	8.25 "
175	Coaticooke.....	11.30 "	6.45 "	8.50 "
	.....	12.00 "	7.15 "	9.40 "
183	Compton.....	12.00 "		10.10 "
186	Waterville .....	12.20 A. M.	7.40 "	10.50 "
193	Lennoxville.....	12.30 "	7.50 "	11.10 "
196	Sherbrooke .....	12.50 "	8.10 "	11.40 "
	.....	1.00 "	8.20 "	11.55 "
203	Brompton Falls.....	1.20 "		12.10 P. M.
211	Windsor.....	1.40 "	8.40 "	12.40 "
	.....	1.40 "	9.00 "	1.15 "
221	<b>RICHMOND</b> .. { .....	2.00 "	9.30 "	2.00 "
	.....Arrive			
231	New Durham .....	2.25 "	9.45 "	2.25 "
	.....Depart			
235	Old Durham.....	3.00 "	10.15 "	3.10 "
243	Acton .....	3.12 "	10.30 "	3.25 "
249	Upton .....	3.40 "	10.55 "	4.00 "
252	St. Liboire .....	4.00 "	11.20 "	4.40 "
255	Britannia Mills.....	4.10 "	11.30 "	4.53 "
262	St. Hyacinthe.....	4.20 "	11.40 "	5.05 "
269	Soixante .....	4.45 "	12.00 P. M.	5.35 "
275	St. Hilaire.....	5.05 "	12.20 "	6.00 "
276	Belœil.....	5.25 "	12.40 "	6.30 "
282	Bou. Mountain.....	5.35 "	12.50 "	6.45 "
287	St. Hubert.....	5.55 "	1.10 "	7.10 "
290	St. Lambert.....	6.10 "	1.25 "	7.30 "
297	<b>MONTREAL</b> .....	6.25 "	1.35 "	7.50 "
	.....Arrive	6.50 A. M.	2.00 P. M.	8.25 P. M.

# MONTREAL TO PORTLAND.

Via Grand Trunk Railway.

[May 20th.]

TOTAL MILES.	STATIONS.	Express.	Express.	Express.
	<b>MONTREAL</b> ..... Depart	<b>10.10 P. M.</b>	<b>2.00 P. M.</b>	<b>7.00 A. M.</b>
7	St. Lambert.....	10.43 "	2.23 "	7.50 "
10	St. Hubert.....		2.32 "	8.05 "
15	Bou. Mountain.....	*11.10 "	2.44 "	8.30 "
21	Belœil.....		3.02 "	8.55 "
22	St. Hilaire.....	11.35 "	3.10 "	9.10 "
28	Soixante.....		3.35 "	9.40 "
35	St Hyacinthe.....	12.10 A. M.	4.00 "	10.15 "
42	Britannia Mills.....		4.20 "	10.50 "
44	St. Liboire.....		4.30 "	11.05 "
48	Upton.....		4.40 "	11.20 "
54	Acton.....	1.00 "	5.05 "	12.00 P. M.
62	Old Durham.....		5.30 "	12.40 "
66	New Durham.....		5.45 "	1.00 "
76	RICHMOND..... } Arrive	2.00 "	6.15 "	1.45 "
	} Depart	2.15 "	6.30 "	2.20 "
86	Windsor.....		7.00 "	3.15 "
94	Brompton Falls.....		7.25 "	3.50 "
101	Sherbrooke..... } Arrive		7.55 "	4.30 "
	} Depart	3.20 "	7.55 "	4.35 "
104	Lennoxville.....		8.05 "	5.00 "
111	Waterville.....		8.25 "	5.35 "
114	Compton.....		8.35 "	5.50 "
122	Coaticooke.....	4.15 "	9.05 "	7.00 "
131	Boundary Line.....	*4 45 "	9.40 "	7.50 "
137	Norton.....		9.55 "	8.15 "
148	ISLAND POND } Arrive	5.30 "	10.30 P. M.	9.00 P. M.
	} Depart	6.00 "		
156	Wenlock.....	6.20 "		
163	North Stratford.....	6.45 "		
167	Stratford.....	6.58 "		
171	Stratford Hollow.....	7.10 "		
175	Northumberland.....	7.23 "		
181	Stark.....	7.45 "		
188	West Milan.....	8.00 "		
194	Milan.....	8.20 "		
200	Berlin Falls.....	8.35 "		
206	Gorham..... } Arrive	9.00 "		
	} Depart			
212	Shelburne.....	9.20 "		
217	Gilead.....	9.35 "		
223	West Bethel.....	9.55 "		
227	Bethel.....	10.10 "		
232	Locke's Mills.....	10.25 "		
236	Bryant's Pond.....	10.40 "		
242	West Paris.....	11.00 "		
249	South Paris..... } Arrive	11.30 "		
	} Depart			
256	Oxford.....	11.55 "	5.45 A. M.	3 50 P. M.
261	Mechanic Falls.....	12.10 P. M.	6.03 "	4.25 "
265	Empire Road.....	11.25 "	6.18 "	4.50 "
138	<b>BANGOR</b> ..... Depart	<b>7.30 A. M.</b>	<b>6.31 A. M.</b>	<b>5 10 P. M.</b>
270	Danville Junction.....	12.45 P. M.	6.47 A. M.	5.40 P. M.
275	New Gloucester.....	1.00 "	7.03 "	6 10 "
279	Pownal.....	1.15 "	7.15 "	6 30 "
282	North Yarmouth.....	1.26 "	7.24 "	6.50 "
285	Yarmouth Junction.....	1.38 "	7.35 "	7.00 "
286	Yarmouth.....	1.45 "	7.40 "	7.10 "
288	Cumberland.....			
292	Falmouth.....	2.00 "	7.55 "	7.45 "
297	<b>PORTLAND</b> ..... Arrive	<b>2.15 P. M.</b>	<b>8.10 A. M.</b>	<b>8.10 P. M.</b>

\* Trains do not stop unless signalled.

C. J. Brydges, Managing Director Montreal, C. E.

# MONTREAL TO TORONTO.

Via Grand Trunk Railway.

[April 28th

TOTAL MILES.	STATIONS.	Express.	Express.	Local Trains.	Local Trains.
	<b>MONTREAL</b> .....Depart	9.30 A.M.	9.30 P. M.	7.00 A. M.	5.15 P. M.
2	Tanneries Junction.....	9.40 "	9.40 "	7.10 "	5.25 "
14	Pointe Claire.....	"	10.17 "	8.10 "	6.00 "
21	St. Anne's.....	"	*10.34 "	8.38 "	6.17 "
24	Vaudreuil.....	10.40 "	10.45 "	8.55 "	6.30 "
29	Cedars.....	"	*10.56 "	9.18 "	6.45 "
34	River Rouge.....	"	*11.11 "	9.45 "	7.05 "
• 37	Coteau Landing.....	11.16 "	11.22 "	10.00 "	7.15 "
43	Riv. Beaudette.....	"	*11.37 "	10.28 "	7.35 "
53	Lancaster.....	12.00 "	12.08 A. M.	11.15 "	8.15 "
67	<b>CORNWALL</b> } Arrive 12.40 P.M.		12.50 "		8.55 P. M.
	} Depart 12.55 "		1.00 "	12.20 P. M.	
72	Moulinette.....				
77	Dickinson's Landing.....	1.20 "	1.25 "	1.30 "	
81	Farran's Point.....			1.45 "	
83	Aultsville.....	1.36 "	*1.42 "	1.55 "	
92	Williamsburg.....	1.58 "	2.05 "	2.50 "	
99	Matilda.....	2.15 "	2.22 "	3.35 "	
104	Edwardsburgh.....	*2.30 "		4.10 "	
112	<b>PRESCOTT JUNCTION</b> } Arr 2.50 "		2.55 "	5.00 "	
	} Dep 3.00 "		3.00 "	5.15 "	
120	Maitland.....			5.52 "	
125	Brockville.....	3.35 "	3.35 "	6.15 "	
129	Lyn.....	*3.47 "		6.35 "	
137	Mallorytown.....	4.10 "	4.05 "	7.10 "	
146	Lansdowne.....	4.30 "	4.25 "	7.52 "	
155	Gananoque.....	4.50 "	4.52 "	8.35 "	
164	Ballantyne's.....				
172	<b>KINGSTON</b> ... } Arrive 5.30 "		5.35 "	10.00 P. M.	
	} Depart 5.50 "		5.40 "	6.45 A. M.	
187	Ernestown.....	*6.30 "	6.25 "	7.55 "	
198	Napanee.....	6.50 "	6.55 "	8.46 "	
206	Tyendinaga.....	7.10 "	*7.16 "	9.25 "	
213	Shannonville.....	7.23 "	*7.32 "	10.00 "	
220	Belleville.....	7.40 "	7.52 "	10.40 "	
231	Trenton.....	8.10 "	8.25 "	11.35 "	
241	Brighton.....	8.32 "	8.50 "	12.20 P. M.	
248	Colborne.....	8.50 "	9.10 "	12.55 "	
256	Grafton.....		9.30 "	1.35 "	
263	<b>COBOURG</b> . } Arrive 9.25 "		9.55 "	2.10 "	
	} Depart 9.40 "		10.10 "	2.25 "	
270	Port Hope.....	9.53 "	10.30 "	3.00 "	
280	Newtonville.....		10.58 "	3.55 "	
285	Newcastle.....		11.15 "	4.30 "	
290	Bowmanville.....	10.43 "	11.27 "	4.50 "	
299	Oshawa.....	11.05 "	11.50 "	5.35 "	
303	Port Whitby.....	11.15 "	12.03 P. M.	5.55 "	
310	Duffin's Creek.....	11.30 "	12.20 "	6.25 "	
312	Frenchman's Bay.....		12.26 "	6.35 "	
316	Port Union.....		12.37 "	6.53 "	
322	Scarboro'.....		12.50 "	7.18 "	
331	Don.....		1.20 "		
333	<b>TORONTO</b> .....Arrive	12.30 A. M.	1.30 P. M.	8.05 P. M.	

The Train from Montreal on Saturday night lies over at Belleville till Monday morning.

\* Flag Stations.

Refreshment Rooms at Cornwall, Prescott Junction, Kingston, Cobourg and Toronto.

C. J. Bydges, Managing Director, Montreal, C. E.

# TORONTO TO MONTREAL.

Via Grand Trunk Railway.

[April 28th.]

TOTAL MILES.	STATIONS.	Express.	Express.	Local Trains.	Local Trains.
	<b>TORONTO</b> ..... Depart	<b>6.30</b> A. M.	<b>6.00</b> P. M.	<b>1.00</b> P. M.	.....
1	Don.....			1.20 "	.....
11	Scarboro'.....		6.30 "	2.05 "	.....
16	Port Union.....	<b>7.17</b> "	6.53 "	2.35 "	.....
20	Frenchman's Bay.....		7.05 "	2.55 "	.....
23	Duffin's Creek.....	*7.38 "	7.11 "	3.05 "	.....
27	Port Whitby.....	7.55 "	7.31 "	3.40 "	.....
33	Oshawa.....	8.09 "	7.45 "	4.00 "	.....
43	Bowmanville.....	8.35 "	8.15 "	4.50 "	.....
47	Newcastle.....	8.47 "	8.30 "	5.15 "	.....
53	Newtonville.....	9.00 "	8.48 "	5.50 "	.....
63	Port Hope.....	9.30 "	9.20 "	7.00 "	.....
69	<b>COBOURG.</b> } ..... Arrive	9.50 "	9.40 "	7.40 "	.....
	} ..... Depart	10.05 "	9.55 "	7.55 "	.....
77	Grafton.....	*10.28 "	10.24 "	8.35 "	.....
84	Colborne.....	10.48 "	10.45 "	9.12 "	.....
92	Brighton.....	11.10 "	11.10 "	9.52 "	.....
101	Trenton.....	11.35 "	11.42 "	10.38 "	.....
112	Belleville.....	12.08 P. M.	12.20 A. M.	11.38 "	.....
120	Shannonville.....	*12.27 "		12.08 A. M.	.....
126	Tyendinaga.....	*12.45 "	1.05 "	12.38 "	.....
134	Napawee.....	1.05 "	1.32 "	1.45 "	.....
145	Ernestown.....	1.35 "		2.45 "	.....
160	<b>KINGSTON</b> ... } ..... Arrive	2.15 "	2.55 "	4.00 A. M.	.....
	} ..... Depart	2.35 "	3.00 "	6.15 A. M.	.....
169	Ballantyne's.....				.....
178	Gananoque.....	3.23 "	3.45 "	7.40 "	.....
186	Lansdowne.....	3.47 "	4.25 "	8.25 "	.....
195	Mallorytown.....	4.10 "		9.05 "	.....
203	Lyn.....	4.30 "		9.50 "	.....
207	Brockville.....	4.42 "	5.30 "	10.10 "	.....
212	Maitland.....			10.33 "	.....
221	Prescott Junction.....	5.15 "	6.03 "	11.15 "	.....
228	Edwardsburgh.....	*5.33 "	*6.25 "	11.50 "	.....
234	Matilda.....	5.48 "	6.40 "	12.16 P. M.	.....
240	Williamsburgh.....	6.06 "	6.55 "	12.50 "	.....
249	Aultsville.....	*6.30 "	*7.21 "	1.55 "	.....
251	Farran's Point.....		*7.26 "	2.05 "	.....
256	Dickinson's Landing.....	6.47 "	7.38 "	2.25 "	.....
260	Moulinette.....				.....
265	<b>CORNWALL.</b> } ..... Arrive	7.10 "	8.05 "	3.07 "	.....
	} ..... Depart	7.25 "	8.20 "		<b>5.15</b> A. M.
279	Lancaster.....	8.02 "	9.05 "	4.10 "	5.57 "
289	River Beaudette.....		*9.38 "	4.55 "	6.30 "
295	Coteau Landing.....	8.42 "	10.00 "	5.20 "	6.45 "
298	River Rouge.....		*10.08 "	5.35 "	6.55 "
304	Cedars.....		*10.26 "	5.58 "	7.11 "
308	Vaudreuil.....	9.15 "	10.40 "	6.18 "	7.30 "
312	St. Anne's.....		*10.50 "	6.33 "	7.37 "
318	Pointe Claire.....	9.40 "	11.06 "	7.00 "	7.55 "
331	Tanneries Junction.....	10.20 "	11.35 "	7.50 "	8.35 "
333	<b>MONTREAL</b> ..... Arrive	<b>10.30</b> P. M.	<b>11.45</b> A. M.	<b>8.00</b> P. M.	<b>8.45</b> A. M.

The Train from Toronto on Saturday night lies over at Brockville till Monday morning.

\* Flag Stations.

Refreshment Rooms at Cornwall, Prescott Junction, Kingston, Cobourg, and Toronto.

C. J. Brydges, Managing Director, Montreal, C. E.

# TORONTO to DETROIT.

[May 12th.]

Via Grand Trunk Railway

TOTAL MILES	STATIONS.	Express.	Express.	Express	Mail.	Mixed.
	<b>TORONTO</b> .....Dep	12.30 A. M.	7.30 A. M.	1.30 P. M.	3.45 P. M.	.....
5	Carlton.....		*7.42 "		3.57 "	.....
8	Weston.....	12.55 "	7.52 "	1.50 "	4.05 "	.....
15	Malton.....		8.10 "		4.22 "	.....
21	Brampton.....	1.30 "	8.28 "	2.20 "	4.38 "	.....
26	Norval.....		8.42 "		4.54 "	.....
29	Georgetown.....		8.50 "	2.42 "	5.00 "	.....
32	Lime House.....		*9.00 "		5.08 "	.....
35	Acton West.....		9.10 "	3.00 "	5.17 "	.....
41	Rockwood.....		9.25 "		5.31 "	.....
48	Guelph.....	2.45 "	9.45 "	3.33 "	5.50 "	.....
58	Breslau.....		10.15 "		6.15 "	.....
62	Berlin.....	3.30 "	10.30 "	4.11 P. M.	6.30 P. M.	.....
	Berlin..... Dep				6.35 P. M.	.....
	Doon..... Ar				7.05 P. M.	.....
68	Petersburgh.....		10.50 A. M.		*6.46 P. M.	.....
72	Baden.....		11.00 "		6.55 "	.....
75	Hamburgh.....		11.07 "		7.03 "	.....
82	Shakespeare.....		11.25 "	5.00 P. M.	7.22 "	.....
88	STRATFORD } Ar	4.30 "	11.45 "	5.15 "	7.40 "	.....
	De } Ar	4.45 "	12.00 NOON.	5.30 "		.....
98	St. Marys.....	5.10 A. M.	12.25 P. M.	5.55 P. M.	8.10 P. M.	.....
	St. Mary's...De	5.10 A. M.	12.30 P. M.		8.10 P. M.	.....
110	Thorndale.....	8.55 "	1.03 "		8.43 "	.....
120	London..... Arr	9.30 A. M.	1.30 P. M.		9.10 P. M.	.....
98	St. Mary's.....	5.10 A. M.	12.25 P. M.	5.55 P. M.		.....
108	Granton.....		*12.45 "			.....
113	Lucan.....		12.55 "	6.33 "		.....
120	Craigs.....	6.02 "	1.12 "			.....
128	Park Hill.....		1.30 "	7.10 "		.....
136	Widder.....		1.47 "			.....
145	Forrest.....	6.40 "	2.10 "	7.52 "		.....
154	Camlachie.....		*2.32 "			.....
168	SARNIA.....	7.50 "	3.05 "	8.45 "		.....
	PORT HURON.....	7.50 "	3.05 "	8.50 "		6.00 A. M.
169	Smith's Creek.....		3.32 "			6.35 "
190	Ridgeway.....		4.00 "	9.38 "		7.10 "
196	New Baltimore.....		4.15 "	9.50 "		7.30 "
206	Mount Clemens.....	9.07 "	4.40 "			8.12 "
211	Utica Plank.....		4.52 "			8.35 "
223	Milwaukee Junc.....	9.45 "	5.20 "	10.35 "		9.30 "
228	Detroit Junction.....	9.55 "	5.35 "	10.45 "		9.45 "
231	DETROIT..... Arr	10.10 A. M.	5.50 P. M.	11.00 P. M.		10.10 A. M.

Between Toronto and Sarnia, Toronto Time. Port Huron and Chicago, Chicago Time.  
Refreshment Rooms at Toronto, Stratford, Sarnia, and Detroit Junction.

## MONTREAL to LACHINE and PROVINCE LINE.

Via Grand Trunk Railway

[May 6th]

Miles.	STATIONS.	Pass.	Pass.	Pass.	Plattsburgh Mail.	Pass.	Pass.
		A. M.	A. M.	Noon.	P. M.	P. M.	P. M.
8	<b>MONTREAL</b> ..... Dep	7.00	9.00	12.00	3.00	5.00	6.30
	Lachine.....	7.30	9.30	12.30 P. M.	3.30	5.30	7.00
10	Caughnawaga.....				4.00		
15	St. Isidore.....				4.20		
21	St. Remi.....				4.45		
25	Lapigeoniere.....				5.00		
32	Johnsons.....				5.30		
36	Hemmingford.....				5.45		
40	<b>PROVINCE LINE</b> ..... Ar				6.00		

\*Flag Stations. NOTE.—The train leaving Montreal at 3.00 P. M. arrives at Plattsburgh at 7.15 P. M.

## DETROIT to TORONTO.

[May 12th

Via Grand Trunk Railway

TOTAL MILES.	STATIONS.	Express.	Express.	Express.	Mail.	Express.
	<b>DETROIT</b> .....D	2.20 A. M.	5.30 P. M.	9.25 A. M.		6.00 A. M.
3	Detroit Junction....	2.45 "	5.55 "	9.55 "		6.15 "
8	Milwaukee Junc....		6.05 "	10.05 "		6.25 "
19	Utica Plank.....		6.38 "			
25	Mount Clemens....	*3.35 "	6.52 "	*10.42 "		7.05 "
35	New Baltimore....		7.17 "			7.30 "
41	Ridgeway.....	4.10 "	7.32 "	11.15 "		7.45 "
51	Smith's Creek.....		8.00 "			8.10 "
62	PORT HURON.....	4.45 "	8.25 "	12.00 NOON.		8.40 "
63	SARNIA.....	5.30 "	9.20 "	1.00 P. M.		9.35 "
76	Camlachie.....		9.50 "			*10.05 "
85	Forrest.....			2.10 "		10.30 "
94	Widder.....	6.40 "				10.50 "
103	Park Hill.....					11.10 "
110	Craigs.....		11.07 "	3.10 "		11.30 "
117	Lucan.....			3.30 "		11.47 "
123	Granton.....	7.45 "				12.01 "
132	St. Marys..... Arr	8.08 A. M.	11.55 P. M.	4.05 P. M.		12.25 P. M.
	LONDON...De	11.25 A. M.		2.55 P. M.	6.35 A. M.	
10	Thorndale.....	11.50 "		3.25 "	7.03 "	
22	St. Marys... Arr	12.20 P. M.		4.00 P. M.	7.35 A. M.	
132	St. Marys..... De	8.08 A. M.	11.55 P. M.	4.05 P. M.	7.35 A. M.	12.25 P. M.
143	STRATFORD } Ar	8.30 "	12.20 A. M.	4.30 "		12.50 "
	} De	8.45 "	1.00 "	4.40 "	8.03 "	1.05 "
149	Shakespeare.....		1.20 "	5.00 "	8.15 "	1.20 "
156	Hamburgh.....	9.23 "			8.37 "	
159	Baden.....			5.30 "	8.43 "	
162	Petersburgh.....				8.52 "	2.00 "
	Doon.....De				8.15 A. M.	
	Berlin.....Ar				8.45 A. M.	
168	Berlin.....	10.00 A. M.	2.10 "	6.02 "	9.10 A. M.	2.15 "
173	Breslau.....	10.15 "		6.15 "	9.22 "	2.28 "
183	Guelph.....	10.40 "	2.45 "	6.45 "	9.45 "	2.55 "
190	Rockwood.....	11.00 "			10.05 "	3.15 "
196	Acton.....	11.10 "	3.30 "	7.22 "	10.20 "	
198	Lime-house.....				10.28 "	
202	Georgetown.....	11.30 "	3.50 "	7.40 "	10.35 "	3.46 "
204	Norval.....				10.40 "	
210	Brampton.....	11.50 "	4.12 "	8.00 "	10.56 "	4.05 "
216	Malton.....		4.30 "	8.20 "	11.12 "	4.22 "
223	Weston.....	12.23 P. M.	4.51 "	8.37 "	11.30 "	
226	Carlton.....				11.40 "	
231	<b>TORONTO</b> .....Ar	12.45 P. M.	5.15 A. M.	9.00 P. M.	11.50 A. M.	5.00 P. M.

Refreshment Rooms at Detroit Junction, Sarnia, Stratford and Toronto.

## PROVINCE LINE to LACHINE and MONTREAL.

Via Grand Trunk Railway.

[May 6th.

Miles.	STATIONS.	Pass.	Plattsburgh Mail.	Pass.	Pass.	Pass.	
	<b>PROVINCE LINE</b> ...D		A. M.				
3	Hemmingford.....		7.30				
7	Johnsons.....		7.45				
14	Lapigeoniere.....		8.00				
18	St. Remi.....		8.30				
24	St. Isidore.....		8.46				
29	Caughnawaga.....		9.10				
31	Lachine.....	A. M.	9.30	P. M.	P. M.	P. M.	P. M.
40	<b>MONTREAL</b> ..... Arr	8.00	10.00	1.00	4.20	5.30	7.00
		8.30	10.30	1.30	4.50	6.00	7.30
		A. M.	A. M.	P. M.	P. M.	P. M.	P. M.

\*Flag Stations. NOTE.—The train arriving at Montreal at 10.30 AM leaves Plattsburgh at 6.00.

# BUFFALO TO DETROIT.

(May 13th

TOTAL MILES.	STATIONS.	Express.	Express.	Express.
	BUFFALO ..... Depart	12.30 A. M.	6.50 A. M.	1.00 P. M.
2	FORT ERIE .....	12.30 "	6.50 "	1.00 "
9	Bertie .....		7.10 "	
13	Shirk's .....			
19	PT. COLBORNE .....	1.07 "	7.38 "	1.40 "
24	Wainfleet .....		*7.52 "	
30	Boulton Ditch .....			
32	Feeder .....	1.35 "	8.15 "	2.10 "
38	DUNNVILLE .....	1.47 "	8.30 "	2.25 "
46	Canfield .....		8.53 "	
51	Cook's .....		*9.05 "	
59	Caledonia .....	2.30 "	9.25 "	3.15 "
65	Middleport .....			
68	Onondaga .....		9.50 "	
72	Cainsville .....			
75	BRANTFORD .....	3.03 "	10.10 "	3.55 "
83	PARIS .....	3.25 "	10.30 "	4.11 "
89	Richwood .....	3.40 "		
92	Drumbo .....		10.47 "	
97	Bright .....		11.00 "	
100	Ratho .....			
107	Tavistock .....		11.25 "	5.10 "
115	STRATFORD } ..... Arrive	4.40 "	11.45 "	5.30 "
	} ..... Depart	4.45 "	12.00 NOON	5.30 "
125	St. Marys .....	5.10 "	12.25 P. M.	5.55 "
155	Granton .....		*12.45 "	
140	Lucan .....		12.55 "	6.33 "
147	Craigs .....	6.02 "	1.12 "	
155	Park Hill .....		1.30 "	7.10 "
164	Widder .....	6.40 "	1.47 "	
173	Forrest .....		2.10 "	7.52 "
182	Camlachie .....		*2.32 "	
195	SARNIA .....	7.50 "	3.05 "	8.45 "
196	PORT HURON .....	7.50 "	3.05 "	8.50 "
217	Ridgeway .....		4.00 "	9.38 "
223	New Baltimore .....		4.15 "	9.50 "
233	Mt. Clemens .....	9.07 "	4.40 "	
255	Detroit Junction .....	9.55 "	5.35 "	10.45 "
258	DETROIT ..... Arrive	10 10 A. M.	5.50 P. M.	11.00 P. M.

The Train leaving Buffalo at 2.00 A.M., runs through to Detroit on Sunday morning, but not on Monday.

\* Flag Stations.

Arthabaska to Three Rivers. Via Grand Trunk Railway.			Three Rivers to Arthabaska. [May 20 Via Grand Trunk Railway.		
MILES.	STATIONS.	Mixed.	MILES.	STATIONS.	Mixed.
	<b>ARTHABASKA</b> Jun...De	7.30 A.M.		<b>DOUCET'S LANDING,</b> (opposite Three Rivers)..De	4.00 P.M.
4	Walker's Cutting .....	7.48 "	4	St. Gregoire .....	4.16 "
11	Bulstrode .....	8.14 "	10	St. Celestin .....	4.36 "
13	Aston .....	8.42 "	17	Aston .....	4.57 "
25	St. Celestin .....	9.12 "	24	Bulstrode .....	5.22 "
31	St. Gregoire .....	9.34 "	30	Walker's Cutting .....	5.45 "
35	<b>DOUCET'S LANDING,</b> (opposite Three Rivers)..Ar	9.52 A.M.	35	<b>ARTHABASKA</b> Jun...Ar	6.15 P.M.

## DETROIT TO BUFFALO.

[May 13th.

TOTAL MILES.	STATIONS.	Express.	Express.	Express.
	DETROIT..... Depart	2.20 A. M.	5.30 P. M.	9.25 A. M.
3	Detroit Junction.....	2.45 "	5.55 "	9.55 "
25	Mount Clemens.....		6.52 "	
35	New Baltimore.....		7.17 "	
41	Ridgeway.....	4.10 "	7.32 "	11.15 "
62	PORT HURON.....	4.45 "	8.25 "	12.00 Noon
63	SARNIA.....	5.30 "	9.20 "	1.00 P. M.
76	Camlachie.....	6.00 "	9.50 "	
85	Forrest.....	6.20 "		2.10 "
94	Widder.....	6.40 "		
103	Park Hill.....	7.00 "		
110	Craigs.....	7.18 "	11.07 "	3.10 "
117	Lucan.....	7.33 "		3.30 "
123	Granton.....	7.45 "		
132	St. Marys.....	8.08 "	11.55 "	4.05 "
143	STRATFORD }..... Arrive	8.30 "	12.20 A. M.	4.30 P. M.
	..... Depart	8.40 "	12.30 "	4.45 "
151	Tavistock.....	9.00 "	12.46 "	5.10 "
158	Ratho.....	9.15 "		
161	Bright.....	9.22 "		
166	Drumbo.....	9.33 "		
169	Richwood.....	9.40 "	1.00 "	
175	PARIS.....	9.53 "	1.38 "	6.07 "
183	BRANTFORD.....	10.10 "	1.55 "	6.28 "
186	Cainsville.....			
191	Onondaga.....			6.48 "
193	Middleport.....			
200	Caledonia.....	10.50 "	2.30 "	7.08 "
207	Cook's.....			
212	Canfield.....			7.40 "
220	DUNNVILLE.....	11.40 "	3.05 "	8.00 "
226	Feeder.....	11.52 "	3.27 "	8.15 "
228	Boulton Ditch.....			
234	Wainfleet.....			
239	PORT COLBORNE.....	12.22 P. M.	3.55 "	8.47 "
245	Shirk's.....			
249	Bertie.....			
257	FORT ERIE.....	1.00 "	4.30 "	9.30 "
259	BUFFALO.....	1.45 P. M.	5.15 A. M.	10.23 P. M.

## MONTREAL AND ROUSE'S POINT.

[May 20th

Via Grand Trunk Railway.

Miles.	STATIONS.	Loc'l.	Exp.	Exp	Miles	STATIONS.	Exp.	Exp	Loc'l
	<b>MONTREAL</b> De	A. M.	P. M.	P. M.		<b>ROUSE'S P'T.</b> De	A. M.	P. M.	P. M.
6	St. Lambert.....	7.15	6.15	4.00	6	Lacolle.....	6.30	9.00	1.00
11	Brosseaus.....	8.10	6.38	4.23	10	Stottsville.....	6.50		1.30
19	Lacadie.....	8.25	6.50		16	Grande Ligne.....	7.02		1.45
27	ST. JOHNS. } Arri	9.15	7.15	5.05	22	ST. JOHNS } ... Ar	7.25		2.15
	..... Dep	10.20				..... De	7.45	9.50	2.40
32	Grande Ligne.....	10.45	7.55		29	Lacolle.....	7.50		3.00
38	Stottsville.....	11.15	8.15		38	Brosseaus.....	8.10		3.25
42	Lacolle.....	11.30	8.25		43	St. Lambert.....	8.35		4.00
49	<b>ROUSE'S P'T.</b> Ar	12.00	8.45	5.55	49	<b>MONTREAL</b> Ar	8.50	10.30	4.23
		Noon	P. M.	P. M.			9.15	10.55	5.20
							A. M.	P. M.	P. M.



# BUFFALO TO GODERICH.

Via Grand Trunk Railway.

[May 13th]

TOTAL MILES.	STATIONS.	Express.	Express.	Express.	Local.	Local.
	<b>BUFFALO</b> Dep	12.30 A. M.	16.50 A. M.	1.00 P. M.		3.30 P. M.
2	FORT ERIE.....	12.30 "	6.50 "	1.00 "		4.00 "
9	Bertie.....		7.10 "			4.35 "
13	Shirk's.....					4.50 "
19	PT. COLBORNE..	1.07 "	7.38 "	1.40 "		5.15 "
24	Wainfleet.....		7.52 "			5.40 "
30	Boulton Ditch.....					
32	Feeder.....	1.35 "	8.15 "	2.10 "		6.15 "
38	DUNNVILLE.....	1.47 "	8.30 "	2.25 "		6.47 "
46	Canfield.....		8.53 "			7.40 "
51	Cook's.....		9.05 "			7.57 "
59	Caledonia.....	2.30 "	9.25 "	3.15 "		8.27 "
65	Middleport.....					8.50 "
68	Onondaga.....		9.50 "			9.00 "
72	Cainsville.....					
75	BRANTFORD.....	3.08 "	10.10 "	3.55 "	5.00 A. M.	9.30 P. M.
83	PARIS.....	3.25 "	10.30 "	4.11 "	5.40 "	
89	Richwood.....	3.40 "			6.10 "	
92	Drumbo.....		10.47 "		6.25 "	
97	Bright.....		11.00 "		6.55 "	
100	Ratho.....				7.10 "	
107	Tavistock.....		11.25 "	5.10 "	7.45 "	
115	STRATFORD { Ar	4.40 A. M.	11.45 "	5.30 "	8.30 "	
	{ De		12.15 P. M.	7.50 "	9.00 "	
128	Mitchell.....		1.05 "	8.40 "	9.55 "	
133	Carron Brook.....		1.25 "	9.00 "	10.20 "	
139	Seaforth.....		1.50 "	9.25 "	10.50 "	
141	Harpurhey.....					
147	Clinton.....		2.20 "	10.00 "	11.30 "	
160	<b>GODERICH</b> ..Ar		3.00 P. M.	10.50 P. M.	12.30 P. M.	

\* Flag Stations. Refreshment Rooms at Buffalo, Stratford, and Goderich. The Express, which leaves Buffalo at 12.30 A. M., runs through to Stratford on Sunday morning but not on Monday morning.

C. J. Brydges, Managing Director, Montreal. C. E.

## ERIE RAILWAY.

### NEW YORK TO BUFFALO.

[April 29th]

Miles	STATIONS.	Express.	Express.	Express.	Express.
	NEW YORK, Foot Chamber St. Dep	8.00 A. M.	10.00 A. M.	7.00 P. M.	
1	Jersey City.....	8.15 "	10.17 "	7.20 "	
17	Paterson.....	8.55 "	11.03 "	8.00 "	
32	Suffern.....	9.27 "	11.47 "	8.36 "	
48	Turners.....		12.48 P. M.	9.25 "	
67	Middletown.....	10.48 "	1.45 "	10.08 "	
84	Port Jervis.....	11.34 "	2.38 "	11.00 "	
123	Narrowsburg.....		4.07 "	12.25 A. M.	
177	Deposit.....	2.41 P. M.	6.31 "	2.38 "	
201	Great Bend.....	3.53 "	7.52 "	3.35 "	
215	Binghampton.....	4.19 "	8.31 "	4.11 "	
237	Owego.....	5.08 "	9.34 "	5.03 "	
274	Elmira.....	6.25 "	11.35 "	6.27 "	
291	Corning.....	7.03 "	12.28 A. M.	7.07 "	
333	Hornellsville.....	8.42 "	2.40 "	8.42 "	
354	Nunda.....	9.32 "			
361	Portage.....	9.48 "	3.50 "		
391	ATTICA {	Arrive	10.53 "	5.00 "	
	{	Depart			
422	BUFFALO.....	12.00 P. M.	6.15 A. M.	12.25 P. M.	

Robert H. Berdell, President. New York.

**GODERICH TO BUFFALO.**

[May 13th

Via Grand Trunk Railway.

TOTAL MILES.	STATIONS.	Express.	Express.	Express.	Local.	Local.
12	<b>GODERICH</b> ...De	6.30 A. M.	1.45 P. M.	.....	.....	4.45 P. M.
17	Clinton.....	7.05 "	2.20 "	.....	.....	5.35 "
21	Harpurhey.....	.....	.....	.....	.....	.....
27	Seaforth.....	7.28 "	2.55 "	.....	.....	6.10 "
31	Carron Brook.....	7.45 "	3.20 "	.....	.....	6.35 "
32	Mitchell.....	7.57 "	3.40 "	.....	.....	6.55 "
45	<b>STRATFORD</b> { Ar	8.30 "	4.30 "	.....	.....	7.45 "
	De	8.40 "	4.45 "	12.30 A. M.	.....	7.45 "
53	Tavistock.....	9.00 "	5.10 "	12.46 "	.....	8.30 "
60	Ratho.....	*9.15 "	.....	.....	.....	9.05 "
63	Bright.....	9.22 "	.....	.....	.....	9.21 "
68	Drumbo.....	9.33 "	.....	.....	.....	9.50 "
71	Richwood.....	*9.40 "	.....	.....	.....	10.00 "
77	<b>PARIS</b> .....	9.53 "	6.07 "	1.38 "	.....	10.35 "
85	<b>BRANTFORD</b> .....	10.10 "	6.28 "	1.55 "	5.30 A. M.	11.10 P. M.
88	Cainsville.....	.....	.....	.....	5.45 "	.....
92	Onondaga.....	.....	6.48 "	.....	6.08 "	.....
95	Middleport.....	.....	.....	.....	6.20 "	.....
101	Caledonia.....	10.50 "	7.08 "	2.30 "	6.50 "	.....
109	Cook's.....	.....	.....	.....	7.25 "	.....
114	Canfield.....	.....	7.40 "	.....	7.47 "	.....
122	<b>DUNNVILLE</b> .....	11.40 "	8.00 "	3.15 "	8.30 "	.....
128	Feeder.....	11.52 "	8.15 "	3.27 "	8.55 "	.....
130	Boulton Ditch.....	.....	.....	.....	9.10 "	.....
135	Wainfleet.....	.....	.....	.....	9.35 "	.....
141	<b>PT COLBO'NE</b> .....	12.22 P. M.	8.47 "	3.55 "	10.00 "	.....
147	Shirk's.....	.....	.....	.....	10.30 "	.....
151	<b>FORT</b> .....	.....	.....	.....	10.48 "	.....
158	<b>FORT ERIE</b> .....	1.00 "	9.30 "	4.30 "	11.20 "	.....
160	<b>BUFFALO</b> ...Arr	1.45 P. M.	10.23 P. M.	5.15 A. M.	12.15 P. M.	.....

\* Flag Stations.

Refreshment Rooms at Buffalo, Stratford and Goderich.

C. J. Brydges, Managing Director, Montreal, C. E.

**ERIE RAILWAY.****BUFFALO TO NEW YORK.**

[April 29th

Miles	STATIONS.	Express.	Express.	Express.	Express.
	<b>BUFFALO</b> .....Dep	5.45 A. M.	2.20 P. M.	6.10 P. M.	11.20 P. M.
31	Attica.....	.....	3.20 "	7.38 "	12.26 A. M.
61	Portage.....	.....	4.28 "	9.02 "	1.34 "
70	Nunda.....	.....	* 4.40 "	9.22 "	.....
91	Hornel'sville.....	9.18 "	5.25 "	10.30 "	2.30 "
142	Corning.....	.....	7.05 "	12.12 "	3.58 "
159	Elmira {	11.20 "	.....	12.47 A. M.	4.30 "
	}	11.30 "	7.40 "	12.57 "	4.30 "
196	Owego.....	.....	9.00 "	2.20 "	5.46 "
218	Binghampton.....	1.30 P. M.	9.47 "	3.05 "	6.30 "
232	Great Bend.....	2.09 "	* 10.15 "	3.43 "	7.04 "
256	Deposit.....	3.15 "	11.26 "	4.55 "	8.12 "
310	Narrowsburg.....	.....	2.02 A. M.	7.00 "	10.17 "
345	Port Jervis.....	6.23 "	3.17 "	8.17 "	11.32 "
369	Middletown.....	.....	4.22 "	9.08 "	12.28 P. M.
385	Turners.....	.....	* 5.05 "	10.16 "	1.12 "
401	Suffern.....	.....	5.42 "	10.51 "	2.04 "
416	Paterson.....	9.27 "	6.17 "	11.26 "	2.41 "
421	Jersey City.....	10.07 "	6.54 "	12.05 "	3.08 "
422	N. York foot Chamber St. ....Arrive	10.30 P. M.	7.1 A. M.	12.30 P. M.	3.25 P. M.

Hugh Riddle, General Superintendent, New York.

**MONTREAL, QUEBEC and RIVIERE DU LOUP,**

Via Grand Trunk Railway.

[May 20th.]

MILES.	STATIONS.	Mixed	Mail.	MILES.	STATIONS.	Ex-press.	Local
		A. M.	P. M.			P. M.	
	<b>PTE. LEVI</b> opposite				<b>MONTREAL</b> Depart	<b>10.10</b>	
	Quebec..... Depart	6.00	7.40	7	St. Lambert.....	10.48	
8	Chaudière Curve.....	6.40	8.10	10	St. Hubert.....		
9	Chaudière.....	6.45	8.15	15	Bou. Mountain.....	11.10	
15	Craig's Road.....	7.15	8.35	21	Belœil.....		
20	Black River.....	7.40	8.50	22	St. Hilaire.....	11.35	
28	Methot's Mills.....	8.30	9.20	28	Soixante.....		
37	Lyster.....	9.05	9.50	35	St. Hyacinthe.....	12.10	
41	Becancour... } Arrive	9.30	10.05	42	Britannia Mills.....		
49	Somerset... } Depart	10.05	10.50	44	St. Liboire.....		
55	Stanford.....	10.40	10.50	48	Upton.....		
64	Arthabaska.....	11.40	11.20	54	Acton.....	1.00	
71	Warwick.....	12.20	11.50	62	Old Durham.....		
84	Danville.....	1.20	12.00	66	New Durham.....		
		2.20	1.10			2.00	
96	<b>RICHMOND</b> } Arrive	2.25	2.30	76	<b>RICHMOND</b> } Arrive	2.00	
		2.25	2.30				A. M.
106	New Durham.....	3.10	3.00	88	Danville.....	2.30	10.25
110	Old Durham.....	3.25	3.12	100	Warwick.....	3.55	12.00
118	Acton.....	4.00	3.40	108	Arthabaska.....	4.20	1.05
125	Upton.....	4.40	4.00	118	Stanford.....	4.55	1.50
128	St. Liboire.....	4.53	4.10	123	Somerset.....	5.15	2.30
130	Britannia Mills.....	5.05	4.20	131	Becancour... } Arrive	5.45	3.10
137	St. Hyacinthe.....	5.35	4.45			5.45	3.25
143	Soixante.....	6.00	5.05			6.00	3.45
149	St. Hilaire.....	6.30	5.25	135	Lyster.....	6.00	3.45
150	Belœil.....	6.45	5.35	143	Methot's Mills.....	6.25	4.25
157	Bou. Mountain.....	6.10	5.55	152	Black River.....	6.55	5.10
162	St. Hubert.....	7.30	6.10	157	Craig's Road.....	7.15	5.35
165	St. Lambert.....	7.50	6.25	163	Chaudiere Curve.....	6.40	6.05
172	<b>MONTREAL</b> Arrive	8.25	6.50	172	<b>PTE. LEVI</b> opposite	8.10	6.45
		P. M.	A. M.		Quebec..... Arrive		6.45
						A. M.	P. M.
	<b>R. DU LOUP</b> ..... Depart	6.30	6.30		<b>POINTE LEVI</b> opposite		P. M.
12	St. Alexandre.....	7.15	7.15		Quebec..... Depart	12.10	
20	St. Helene.....	7.40	7.40	1	Hadlow.....	12.15	
26	St. Pascal.....	8.00	8.00	7	Chaudiere Junct.....	12.45	
30	St. Denis.....	8.20	8.20	11	St. Jean Chrysost.....	1.00	
35	Riviere Ouelle.....	8.40	8.40	14	St. Henri.....	1.15	
42	St. Anne.....	9.05	9.05	22	St. Charles.....	1.50	
50	St. Roch.....	9.30	9.30	28	St. Michel.....	2.10	
57	St. Jean Port Joli.....	10.00	10.00	32	St. Valier.....	2.25	
62	Trois Saumons.....	10.20	10.20	37	St. Francois.....	2.40	
65	<b>L'ISLET</b> ..... } Arrive	10.30	10.30	40	St. Pierre.....	2.55	
		10.30	10.45	46	St. Thomas.....	3.10	
72	Cap St. Ignace.....	11.20	11.20	53	Cap St. Ignace.....	3.35	
79	St. Thomas.....	11.55	11.55	60	<b>L'ISLET</b> ..... } Arrive	4.00	
85	St. Pierre.....	12.20	12.20			4.15	
86	St. Francois.....	12.35	12.35	63	Trois Saumons.....	4.30	
93	St. Valier.....	1.00	1.00	68	St. Jean Port Joli.....	4.50	
97	St. Michel.....	1.20	1.20	75	St. Roch.....	5.25	
103	St. Charles.....	1.50	1.50	83	St. Anne.....	5.55	
111	St. Henri.....	2.10	2.10	90	Riviere Ouelle.....	6.20	
114	St. Jean Chrysost.....	2.25	2.25	95	St. Denis.....	6.40	
118	Chaudiere Curve.....	2.35	2.35	99	St. Pascal.....	7.00	
124	Hadlow.....	2.55	2.55	105	St. Helene.....	7.25	
125	<b>POINTE LEVI</b> , opposite		3.00	113	St. Alexandre.....	7.55	
	Quebec..... Arrive		3.00	125	<b>R. DU LOUP</b> ..... Arrive	8.45	
			P. M.				P. M.

\*Flag Stations.

C. J. Brydges, Managing Director, Montreal, C. E.

# MICHIGAN SOUTHERN RAILWAY.

Trains are run by Chicago Time.

[April 28th.]

## DETROIT TO CHICAGO.

## CHICAGO TO DETROIT.

Miles	STATIONS.	Exp'ss.	Exp'ss.
	DETROIT..... Dep	9.40 AM	5.30 PM
8	Grand Trunk J.....	10.07 "	5.55 "
40	Monroe Junc..... Arr	11.25 PM	7.30 "
40	Monroe Junc..... Dep		
64	Air Line Jct.....		
96	Wauseon.....		
155	Kendallville.....		
187	Goshen.....		
197	Elkhart..... Arr		
40	Monroe Junc..... Dep	11.30 AM	7.35 "
72	Adrian.....	12.55 PM	9.18 "
107	Hillsdale.....	2.10 "	10.47 "
165	White Pigeon.....	4.18 "	1.12 AM
187	Elkhart..... Arr	5.00 "	2.00 "
197	Elkhart..... Dep	5.20 PM	2.05 "
225	Laporte.....	6.49 "	3.50 "
284	CHICAGO..... Arr	9.00 PM	6.30 AM

Miles	STATIONS.	Exp'ss.	Exp'ss.
	CHICAGO.....	7.00 AM	12.00 PM
59	Laporte.....	9.10 "	12.45 AM
101	Elkhart..... Arr	10.45 AM	2.25 AM
101	Elkhart..... Dep	11.05 AM	2.30 AM
119	White Pigeon.....	11.52 "	3.16 "
178	Hillsdale.....	2.10 PM	5.39 "
211	Adrian.....	3.25 "	7.05 "
267	Monroe Junc. Arr.....	4.35 "	8.20 AM
101	Elkhart..... Dep		
111	Goshen.....		
142	Kendallville.....		
201	Wauseon.....		
244	Air Line Jct.....		
267	Monroe Junc. Arr.....		
267	Monroe Junc. Dep.....	4.40 PM	8.35 AM
299	Grand Trunk J.....	5.55 "	9.43 "
207	DETROIT..... Arr	6.20 PM	10.40 AM

C. F. Hatch, General Superintendent, Toledo, O.

# DETROIT and MILWAUKEE RAILWAY.

Trains are run by Detroit Time.

[April 28th.]

## DETROIT TO MILWAUKEE.

## MILWAUKEE TO DETROIT.

Miles	STATIONS.	Mail.	Mixed, with Sleep.Car
	DETROIT..... Dep	10.00 A.M.	8.00 P.M.
4	Grand Trunk Jct.....	10.20 "	8.25 "
26	Pontiac.....	11.45 "	10.10 "
78	Owosso..... } Arr	2.35 P.M.	1.55 A.M.
	} Dep	2.55 "	2.10 "
98	St. John's..... } Arr	3.50 "	3.50 "
	} Dep	3.50 "	4.05 "
157	Grand Rapids..... } Arr	6.20 "	8.55 "
	} Dep	6.25 "	9.15 "
180	Grand Haven..... Arr	7.45 P.M.	11.45 A.M.
	MILWAUKEE. Arr	3.00 A.M.	

Miles	STATIONS.	Mail.	Mixed, with Sleep.Car
	MILWAUKEE. Dep	8.00 P.M.	
	Grand Haven..... Dep	7.30 A.M.	4.00 P.M.
	} Arr	9.00 "	6.20 "
31	Grand Rapids..... } Dep	9.05 "	7.00 "
	} Arr		11.45 "
91	St. John's..... } Arr	11.50 "	12.00 "
	} Dep	12.45 P.M.	1.35 A.M.
110	Owosso..... } Arr	1.05 "	1.50 "
	} Dep	3.40 "	5.40 "
163	Pontiac.....	4.48 "	7.05 "
185	Grand Trunk Jct.....	5.05 P.M.	7.39 A.M.
180	DETROIT..... Arr		

Thomas Bell, General Superintendent, Detroit.

# MILWAUKEE DIVISION OF C. & N. W. R.Y.

Trains are run by Chicago Time.

[May]

## CHICAGO to MILWAUKEE.

## MILWAUKEE to CHICAGO.

Miles	STATIONS.	Express.	Express.
	CHICAGO.....	9.00 A.M.	4.00 P.M.
12	Evanston.....	9.35 "	4.34 "
35	Waukegan.....	10.52 "	5.28 "
45	State Line.....	11.20 "	6.07 "
52	Kenosha.....	11.36 "	6.28 "
62	Racine.....	12.07 P.M.	7.03 "
85	MILWAUKEE.....	1.25 P.M.	8.15 P.M.

Miles	STATIONS.	Express.	Express.
	MILWAUKEE.....	4.15 P.M.	7.40 A.M.
13	Racine.....	5.14 "	8.52 "
23	Kenosha.....	5.48 "	9.27 "
30	State Line.....	6.07 "	9.47 "
40	Waukegan.....	6.35 "	10.15 "
73	Evanston.....	7.48 "	11.23 "
85	CHICAGO.....	8.30 P.M.	12.00 A.M.

B. F. Patrick, Gen. Pass. Agent, Chicago.—Geo. L. Dunlap, Gen. Supt., Chicago, Ill.

# OTTAWA RIVER NAVIGATION COMPANY.

[May 1st.]

Miles.	Montreal to Ottawa	
	Montreal, per G. T. R., Depart	7.00 A. M.
	Lachine, per Str <i>Prince of Wales</i>	7.30 "
52	Carrillon, per C. & G. R.R.....	11.30 "
65	Grenville, per Str <i>Queen Victoria</i>	12.30 P. M.
128	Ottawa..... Arrive	6.30 P. M.

Miles.	Ottawa to Montreal.	
	Ottawa, per Str. <i>Queen Victoria</i>	6.30 A. M.
63	Grenville per C & G. Railway	11.00 "
76	Carillon, per Steamer <i>Prince of Wales</i> .....	11.35 "
	} Arrive	11.35 "
	} Depart	12.30 P. M.
119	Lachine per G. T. R.....	4.20 "
128	Montreal..... Arrive	4.45 P. M.

Capt. R. W. Shepherd, President, Montreal.

**PORT HOPE, LINDSAY and BEAVERTON R'Y.**

Trains are run by Port Hope Time, which is 20 minutes slower than Montreal Time. [Dec. 3d.]

PORT HOPE to LINDSAY.				LINDSAY to PORT HOPE.			
Miles	STATIONS.	Mail.		Miles	STATIONS.	Mail.	
	PORT HOPE .....	Depart	3.00 P.M.		LINDSAY .....	Depart	10.00 A.M.
18	Millbrook .....		4.40	10	Omamee .....		10.47
24	Manvers .....		5.08	19	Manvers .....		11.30
33	Omamee .....		5.45	25	Millbrook .....		12.10
43	LINDSAY .....	Arrive	6.30 P.M.	43	PORT HOPE .....	Arrive	1.35 P.M.
PORT HOPE to PETERBORO.				PETERBORO to PORT HOPE.			
Miles	STATIONS.	Mail.		Miles	STATIONS.	Mail.	
	PORT HOPE .....	Depart	10.30 A.M.		PETERBORO .....	Depart	3.30 P.M.
8	Perrytown .....		11.05	9	Fraserville .....		3.55
15	Summit .....		11.30	13	Millbrook .....		4.30
18	Millbrook .....		12.00	16	Summit .....		4.50
22	Fraserville .....		12.25	23	Perrytown .....		5.16
31	PETERBORO .....	Arrive	12.50 P.M.	31	PORT HOPE .....	Arrive	5.50 P.M.

A. T. Williams, Superintendent, Port Hope.

**LONDON and PORT STANLEY RAILWAY.**

Trains are run by London Time.

[May 7th.]

London to Port Stanley.				Port Stanley to London.			
Miles	STATIONS.	Passeng'r	Passeng'r	Miles	STATIONS.	Passeng'r	Passeng'r
	LONDON .....	Dep	7.30 A.M.	3	P'T STANLEY ..	De	9.30 A.M.
3	Pond Mills .....		7.40	4	White's .....		9.40
5	Westminster North.		7.47	9	St. Thomas. } . Arr		9.50
8	Westminster South.		7.57	9	St. Thomas. } . Dep		9.55
11	Yarmouth .....		8.05	13	Yarmouth .....		10.05
			8.15	16	Westminster South.		10.15
15	St. Thomas. } . Arr		8.25	19	Westminster North.		10.25
	St. Thomas. } . Dep		8.35	21	Pond Mills .....		10.35
20	White's .....		8.35	24	LONDON .....	Arr	10.45 A.M.
24	P'T STANLEY. Ar		8.45 A.M.				6.30 P.M.

W. Bowman, Superintendent, London.

**OTTAWA AND PRESCOTT RAILWAY.**

Trains are run by Montreal Time.

[May 7th.]

OTTAWA TO PRESCOTT.				PRESCOTT TO OTTAWA.			
MILES.	STATIONS.	Exp.	Accommodation.	MILES.	STATIONS.	Exp.	Accommodation.
	OTTAWA .....	Dep	A.M. P.M.		PRESCOTT .....	Dep	P.M. A.M.
6	Billings .....		7.00 1.30	2	Prescott Junction .....		2.45 7.00
10	Gloucester .....		7.15	2	Prescott Junction .....		2.55 7.15
16	Rossiter .....		7.30 2.10	9	Spencerville .....		3.15 7.40
22	Osgoode .....		7.45 2.30	16	Oxford .....		3.40 8.10
31	Kemptville .....		8.00 2.50	22	Kemptville .....		3.55 8.30
27	Oxford .....		8.30 3.20	31	Osgoode .....		4.20 9.05
44	Spencerville .....		8.45 3.40	37	Rossiters .....		4.35 9.35
52	Prescott Junction .....		9.05 4.05	42	Gloucester .....		4.50 9.55
54	PRESCOTT .....	Ar	9.25 4.30	48	Billings .....		5.05
			9.35 4.45	54	OTTAWA .....	Ar	5.20 10.30
			A.M. P.M.				P.M. A.M.

T. S. Detlor, Superintendent, Prescott, C.W.

# NORTHERN RAILWAY OF CANADA.

Trains are run by Toronto Time.

[May 6th.]

TORONTO to COLLINGWOOD.				COLLINGWOOD to TORONTO.			
Miles	STATIONS.	Mail.	Exp's	Miles	STATIONS.	Mail.	Exp's
	TORONTO ..... Dep	A.M. 7.00	P.M. 4.00		COLLINGWOOD..... De	P.M. 3.30	P.M. 5.30
14	Thornhill .....	7.43	4.43	9	Stayner .....	3.58	5.55
18	Richmond Hill .....	7.55	4.56	14	Sunnidale .....	4.20	6.15
22	King .....	8.10	5.11	21	Angus .....	4.42	6.35
30	Aurora .....	8.32	5.34	31	Barrie .....	5.25	7.13
34	Newmarket .....	8.45	5.45	42	Lefroy .....	6.40	7.54
38	Holland Landing .....	8.58	5.58	45	Gilford .....	6.48	8.02
41	Bradford .....	9.08	6.09	52	Bradford .....	7.09	8.23
49	Gilford .....	9.31	6.31	56	Holland Landing .....	7.20	8.34
52	Lefroy .....	9.40	6.40	66	Newmarket .....	7.33	8.45
63	Barrie .....	10.35	7.23	64	Aurora .....	7.45	9.00
73	Angus .....	11.22	8.14	72	King .....	8.03	9.20
80	Sunnidale .....	11.43	8.35	71	Richmond Hill .....	8.14	9.33
85	Stayner .....	12.01	8.53	80	Thornhill .....	8.25	9.45
94	COLLINGWOOD..... Arr	12.15	9.20	94	TORONTO .....	9.05	10.22
		P.M.	P.M.			P.M.	A.M.

Fred. Cumberland, Managing Director, Toronto.

## CINCINNATI, HAMILTON & DAYTON AND DAYTON & MICHIGAN RAILWAYS

Trains are run by Columbus Time.

[April 28th]

DETROIT TO CINCINNATI.				CINCINNATI TO DETROIT.			
Miles	STATIONS.	Express.	Express.	Miles	STATIONS.	Express.	Express.
	DETROIT ..... Dep	6.30 A.M.	5.20 P.M.		CINCINNATI Dep	6.00 A.M.	6.30 P.M.
65	Toledo, .....	11.00 "	9.00 "	25	Hamilton.....	7.12 "	7.46 "
136	Lima, .....	3.35 P.M.	12.40 A.M.	66	Dayton.....	8.50 "	9.40 "
167	Sidney.....	5.05 "	2.10 "	88	Piqua .....	10.08 "	11.26 "
179	Piqua .....	5.35 "	2.39 "	100	Sidney .....	0.40 "	12.04 A.M.
207	Dayton.....	6.55 "	3.55 "	131	Lima .....	12.35 P.M.	2.25 "
242	Hamilton.....	8.58 "	5.12 "	202	Toledo.....	3.50 "	6.30 "
267	CINCINNATI Arr	10.00 P.M.	6.10 A.M.	267	DETROIT .....	6.15 P.M.	10.50 A.M.

D. McLaren, General Superintendent, Cincinnati, O.

## PORTLAND and KENNEBEC RAILWAY.

Trains are run by Portland Time.

[Nov. 12th.]

SKOWHEGAN to PORTLAND.				PORTLAND to SKOWHEGAN.			
Miles	STATIONS.	Passeng'r	Local. Mondays only.	Miles	STATIONS.	Passeng'r	Local. Saturday only.
	SKOWHEGAN .. De	8.30 A.M.			PORTLAND ... Dep	1.00 P.M.	7.45 P.M.
8	Pishon Ferry .....	8.50 "		5	Westbrook.....	1.15 "	8.00 "
13	Somerset Mills .....	9.05 "		12	Cumberland .....	1.30 "	8.15 "
17	Kendalls Mills .....	9.20 "		16	Yarmouth .....	1.42 "	8.25 "
19	Waterville .....	9.30 "		22	Freeport .....	2.00 "	8.45 "
20	Winslow .....	9.40 "		30	BRUNSWICK .....	2.30 "	9.15 "
25	Vassalboro' .....	9.57 "		38	Bowdoinham.....	2.55 "	9.35 "
37	Augusta... } ... Arr	10.35 "		46	Richmond.....	3.15 "	9.55 "
	} ... Dep		5.30 A.M.	56	Gardiner.....	3.45 "	10.25 "
39	Hallowell .....	10.44 "	5.40 "	61	Hallowell .....	4.00 "	10.40 "
44	Gardiner .....	11.00 "	5.55 "	63	Augusta... } ... Arr	4.15 "	10.50 P.M.
54	Richmond .....	11.30 "	6.25 "		} ... Dep		
62	Bowdoinham .....	11.50 "	6.45 "	75	Vassalboro' .....	4.55 "	
70	BRUNSWICK .....	12.25 P.M.	7.10 "	80	Winslow.....	5.12 "	
78	Freeport .....	12.50 "	7.30 "	81	Waterville .....	5.20 "	
84	Yarmouth .....	1.15 "	7.50 "	83	Kendalls Mills .....	5.40 "	
88	Cumberland .....	1.30 "	8.00 "	87	Somerset Mills .....	5.60 "	
95	Westbrook .....	1.45 "	8.15 "	92	Pishon Ferry .....	6.05 "	
100	PORTLAND ... Arr	2.00 P.M.	8.30 A.M.	100	SKOWHEGAN ... Ar	6.25 P.M.	

W. Hatch, Supt., Augusta, Me.

# BROCKVILLE AND OTTAWA RAILWAY.

Trains are run by Montreal Time

(April 22.)

## SAND POINT TO BROCKVILLE.

Miles.	STATIONS.	Mixed.	Mixed.
	Sand Point...Depart	6.00A.M.	2.00P.M.
5½	*Arnprior.....	6.50 "	2.50 "
13½	*Pakenham.....	7.26 "	3.26 "
16½	*Snedden's.....	7.36 "	3.36 "
22½	Almonte.....	8.08 "	4.05 "
28½	*Carleton Place.....	8.36 "	4.36 "
33½	*Beckwith.....	9.01 "	5.01 "
37½	Franktown.....	9.26 "	5.26 "
41	*Ferguson's.....	9.40 "	5.40 "
46½	*Smith's Falls.....	10.16 "	6.14 "
49½	*Story's.....	10.32 "	6.32 "
53½	Irish Creek.....	10.51 "	6.51 "
58½	*Wolford.....	11.15 "	7.15 "
61	*Bell's.....	11.24 "	7.24 "
62½	*Jelly's.....	11.34 "	7.34 "
64½	Bellamy's.....	11.44 "	7.44 "
67½	*Clark's.....	11.58 "	7.58 "
69	*Fairfield.....	12.04 "	8.4 "
74	G. T. Junction.....	12.25 "	8.25 "
74½	Brockville.....Arrive	12.30P.M.	8.30P.M.

## BROCKVILLE TO SAND POINT.

Miles.	STATIONS.	Mixed.	Mixed.
	Brockville.....Depart	6.20A.M.	4.00P.M.
0½	G. T. Junction.....	6.25 "	4.05 "
5½	*Fairfield.....	6.46 "	4.26 "
7	*Clark's.....	6.52 "	4.32 "
10	Bellamy's.....	7.06 "	4.46 "
12	*Jelly's.....	7.16 "	4.56 "
13½	*Bell's.....	7.26 "	5.06 "
16	*Wolford.....	7.35 "	5.15 "
21	Irish Creek.....	7.59 "	5.39 "
25	*Story's.....	8.18 "	5.59 "
28	Smith's Falls.....	8.34 "	6.14 "
33½	*Ferguson's.....	9.10 "	6.50 "
37	Franktown.....	9.26 "	7.04 "
41	*Beckwith.....	9.51 "	7.20 "
46	Carleton Place.....	10.16 "	7.54 "
52	Almonte.....	0.44 "	8.22 "
55½	*Snedden's.....	11.16 "	8.54 "
61	Pakenham.....	11.26 "	9.07 "
69	Arnprior.....	12.02 "	9.42 "
74½	Sand Point...Arrive	12.30P.M.	10.10P.M.

## PERTH BRANCH.

	A.M.	P.M.		A.M.	P.M.		
6	Smith's Falls.....Dep	0.20	6.20	Perth.....Dep	9.25	5.25	
	*Pike Falls.....	0.45	6.45	6	*Pike Falls.....	9.50	5.50
12	Perth.....Arr	11.05	7.05	12	Smith's Falls.....Arr	10.10	6.10
	A.M.	P.M.		A.M.	P.M.		

\* Flag Stations.

H. Abbott, Manager for Trustee, Brockville, C.W.

# OGDENSBURG & LAKE CHAMPLAIN RAILWAY.

Trains are run by Boston Time.

[May 14th.]

## ROUSE'S POINT to OGDENSB'GH.

Miles.	STATIONS.	Exp's.	Mail.
	ROUSE'S POINT de.....	A. M.	P. M.
4	Champlain.....	7.15	12.10
11	Mooers.....	7.28	12.26
14	Centerville.....	7.48	12.35
27	Ellenburgh.....	7.58	12.43
42	Chateauguay.....	8.42	1.17
54	Malone.....	9.25	1.55
66	Brush's Mills.....	10.00	2.45
74	Lawrence.....	10.35	3.20
80	Brasher Falls.....	10.58	3.42
90	Potsdam.....	11.13	3.55
101	Madrid.....	11.43	4.25
118	OGDENSBURGH ar.....	12.10	4.50
		12.50	5.30
		P. M.	P. M.

## OGDENSB'GH to ROUSE'S POINT.

Miles.	STATIONS.	Exp's.	Mail.
	OGDENSBURGH de.....	A. M.	P. M.
17	Madrid.....	5.3	11.30
28	Potsdam.....	6.10	12.15
38	Brasher Falls.....	6.26	12.34
44	Lawrence.....	6.50	1.03
52	Brush's Mills.....	7.13	1.21
64	Malone.....	7.25	1.50
76	Chateauguay.....	8.10	2.40
91	Ellenburgh.....	8.40	3.15
104	Centerville.....	9.26	4.03
107	Mooers.....	10.03	4.45
114	Champlain.....	10.10	4.54
118	ROUSE'S POINT ar.....	10.25	5.15
		10.35	5.30
		A. M.	P. M.

D. W. C. Brown, General Superintendent, Malone, N. Y.

# STANSTEAD, SHEFFORD & CHAMBLY RAILWAY.

Trains are run by St. Albans Time, which is 10 minutes faster than Montreal Time.

[Dec. 3rd

Waterloo to St. Johns.			St. Johns to Waterloo.		
Miles	STATIONS.	Mail.	Miles	STATIONS.	Mail.
	WATERLOO.....Dep	6.00 A.M.		ST. JOHNS.....Dep	4.40 P.M.
6	West Shefford.....	6.15 "	7	Soixante.....	4.56 "
7	Holland's.....	6.20 "	10	St. Brigide.....	5.02 "
14	Granby.....	6.40 "	14	West Farnham.....	5.12 "
22	St. George.....	7.00 "	21	St. George.....	5.40 "
29	West Farnham.....	7.15 "	29	Granby.....	5.55 "
33	St. Brigide.....	7.30 "	36	Holland's.....	6.20 "
36	Soixante.....	7.40 "	37	West Shefford.....	6.25 "
43	ST. JOHNS.....Arr	8.00 A.M.	43	WATERLOO.....Arr	6.40 P.M.

A. B. Foster, Manager, Waterloo, C.E.

# NOVA SCOTIA RAILWAY.

Oct. 4

HALIFAX to TRURO.			TRURO to HALIFAX.				
Miles	STATIONS.	Mail.	Accommodation.	Miles	STATIONS.	Accommodation.	Mail.
3	Halifax.....depart	7.15 A.M.	2.45 P.M.	4	Truro.....dep	6.30 A.M.	3.15 P.M.
8	Four Mile House*...	7.25 "	2.55 "	8	Johnston's Road* ...	6.45 "	3.25 "
10	Bedford.....	7.40 "	3.15 "	13	Brookfield.....	7.00 "	3.40 "
13	Rocky Lake*.....	8.25 "	3.25 "	17	Polly Bog*.....	7.15 "	3.55 "
20	Windsor Junc.. { arr	7.55 "	3.35 "	21	Stewiacke.....	7.30 "	4.10 "
22	Fletcher's*.....	8.15 "	3.40 "	22	SHUBENACADIE..	7.50 "	4.25 "
25	Grand Lake*.....	8.25 "	4.00 "	26	Wickwire's*.....	8.10 "	4.40 "
27	Oakfield*.....	8.32 "	4.10 "	29	Truro Road.....	8.25 "	.....
28	Enfield.....	8.40 "	4.18 "	31	ELMSDALE.. { arr	8.25 "	4.55 "
29	Malcolm's B k Works	8.40 "	4.25 "	31	ELMSDALE.. { dep	8.45 "	5.00 "
31	ELMSDALE.. { dep	8.45 "	4.35 "	33	Malcom's B'k Works	8.50 "	.....
35	Truro Road.....	8.50 "	4.45 "	34	Enfield.....	9.00 "	5.05 "
39	Wickwire's*.....	9.05 "	5.05 "	36	Oakfield*.....	9.10 "	5.12 "
40	SHUBENACADIE	9.15 "	5.20 "	38	Grand Lake*.....	9.20 "	5.20 "
44	Stewiacke.....	9.30 "	5.35 "	41	Fletcher's*.....	9.30 "	5.30 "
48	Polly Bog*.....	9.45 "	5.55 "	47	Windsor Junc.. { arr	9.50 "	5.45 "
53	Brookfield.....	10.00 "	6.10 "	47	Windsor Junc.. { dep	9.55 "	5.50 "
57	Johnston Road*...	10.13 "	6.30 "	59	Rocky Lake.....	10.05 "	.....
61	Truro.....arr	10.25 A.M.	7.00 P.M.	53	Bedford.....	10.15 "	6.05 "
				57	Four Mile House...	10.35 "	.....
				61	Halifax.....arr	10.45 A.M.	6.30 P.M.

## HALIFAX to WINDSOR.

## WINDSOR to HALIFAX.

3	Halifax.....dep	8.00 A.M.	3.45 P.M.	3	Windsor.....dep	8.10 A.M.	4.15 P.M.
8	Four Mile House*...	8.10 "	3.55 "	3	Three Mile Plain*...	8.20 "	4.25 "
10	Bedford.....	8.25 "	4.15 "	5	Newport.....	8.40 "	4.40 "
13	Rocky Lake.....	8.35 "	4.30 "	9	Ellershouse*.....	8.55 "	4.55 "
16	Windsor Junc. { arr	8.45 "	4.40 "	11	Stillwater*.....	9.10 "	5.10 "
16	Windsor Junc. { dep	8.50 "	4.45 "	18	Mt. UNIACKE { arr	9.35 "	5.30 "
26	Beaver Bank.....	9.00 "	4.55 "	18	Mt. UNIACKE { dep	9.40 "	5.35 "
26	Mt. UNIACKE...dep	9.35 "	5.35 "	28	Beaver Bank.....	10.10 "	6.00 "
33	Stillwater*.....	10.00 "	6.05 "	31	Windsor Junc...dep	10.25 "	6.15 "
36	Ellershouse*.....	10.10 "	6.20 "	34	Rocky Lake.....	10.25 "	6.25 "
39	Newport.....	10.25 "	6.35 "	37	Bedford.....	10.45 "	6.35 "
42	Three Mile Plain*...	10.27 "	6.45 "	41	Four Mile House...	11.05 "	6.50 "
45	Windsor.....arr	10.35 A.M.	6.55 P.M.	45	Halifax.....arr	11.15 A.M.	7.00 P.M.

\*Flag Stations.

Geo. Taylor, Superintendent, Richmond, N. S.



# GREAT WESTERN RAILWAY.

Trains are run by Hamilton Time.

[May 13th.]

## SUSPENSION BRIDGE TO WINDSOR.

Miles	STATIONS.	Mixed.	Morn'g Expr'ss	Day Expr'ss	St'mbt. Expr'ss	Night Mail.
	SUSPENSION BRIDGE..... Dep		7.10 AM	1.10 PM	7.50 PM	12.20 AM
9	Thorold.....		7.34 "	1.30 "	8.15 "	12.40 "
11	St. Catherine.....		7.40 "	1.35 "	8.22 "	12.45 "
17	Jordan.....		7.55 "		8.40 "	
22	Beamsville.....		8.07 "		8.52 "	
26	Grimsby.....		8.18 "	2.05 "	9.00 "	1.20 "
31	Ontario.....		8.30 "	2.15 "		
43	HAMILTON }..... Arrive		8.55 "	2.40 "	9.40 "	2.00 "
	}..... Depart		9.10 "	2.50 "	9.50 "	2.10 "
49	Dundas.....		9.30 "	3.10 "	10.10 "	
54	Copetown.....		9.50 "	3.25 "	10.25 "	2.50 "
59	Lynden.....		10.05 "			
62	Harrisburg.....		10.15 "	3.42 "	10.42 "	
72	PARIS.....		10.43 "	4.00 "	11.05 "	3.07 "
79	Princeton.....		11.00 "	4.15 "	11.20 "	3.30 "
81	Arnolds.....		11.05 "			3.45 "
86	Eastwood.....		11.15 "			
90	Woodstock.....		11.25 "	4.40 "	11.50 "	
95	Beachville.....		11.37 "	4.50 "		4.10 "
100	Ingersoll.....		11.47 "	5.00 "	12.10 "	
103	Durchester.....		12.07 PM		12.30 "	
119	LONDON }..... Arrive		12.30 "	5.45 "	12.55 AM	4.30 "
	}..... Depart	6.10 AM	12.50 "	6.00 "	1.05 "	4.50 "
129	Komoka.....	6.50 "	1.10 "	6.25 "	1.30 "	5.10 "
134	Mount Brydges.....	7.10 "	1.22 "	6.35 "		5.20 "
140	Longwood.....	7.50 "	1.35 "	6.47 "	1.55 "	5.45 "
145	Appin.....	8.10 "				
149	Glencoe.....	8.27 "	1.55 "	7.10 "	2.15 "	6.07 "
155	Newbury.....	8.50 "	2.07 "	7.23 "	2.30 "	
161	Bothwell.....	9.10 "	2.20 "	7.35 "	2.49 "	6.37 "
168	Thamesville.....	9.35 "	2.37 "	7.50 "	2.57 "	6.50 "
174	Lewisville.....	10.00 "				7.07 "
183	CHATHAM.....	10.30 "	3.15 "	8.25 "	3.30 "	7.45 "
198	Baptiste Creek.....	11.30 "	3.50 "	9.00 "	4.05 "	8.20 "
203	Stoney Point.....	11.55 "	4.00 "			
211	Belle River.....	12.55 "	4.20 "	9.30 "	4.35 "	8.50 "
220	WIND-OR..... Arrive	2.10 PM	5.00 PM	10.10 PM	5.20 AM	9.30 AM

## TORONTO BRANCH.—TORONTO TO HAMILTON.

Miles	STATIONS.	Accom.	Expr'ss	Accom.	Accom.
7	TORONTO (Yonge Street Station)..... Depart	7.00 AM	9.20 AM	3.55 PM	6.20 PM
13	Mimico.....	7.24 "	9.43 "	4.17 "	7.00 "
21	Port Credit.....	7.40 "	9.58 "	4.35 "	7.25 "
25	Oakville.....	8.00 "	10.18 "	4.57 "	7.52 "
32	Bronte.....	8.10 "	10.28 "	5.10 "	8.07 "
35	Wellington Square.....	8.27 "	10.43 "	5.25 "	8.28 "
37	Waterdown.....	8.35 "		5.33 "	8.33 "
39	HAMILTON..... Arrive	8.50 AM	11.00 AM	5.50 PM	8.55 PM

SARNIA BRANCH.—Trains leave London for Sarnia at 6.50 A.M. and 2.20 P.M. Returning leave Sarnia at 4.50 A.M. and 3.15 P.M.

Thomas Swinyard General Manager, Hamilton.

# WELLAND RAILWAY.

Trains are run by Hamilton Time.

[May 16th.]

## Port Dalhousie to Buffalo.

## Buffalo to Port Dalhousie.

Miles	STATIONS.	Passeng'r	Passeng'r	Miles	STATIONS.	Passeng'r	Passeng'r
	Port Dalhousie... Dep	8.00 A.M.	3.00 P.M.		Buffalo..... Dep	6.50 A.M.	3.30 P.M.
	St. Catharines.....	8.20 "	3.20 "		Port Colborne.....	11.40 "	5.35 "
	Thorold.....	8.45 "	3.45 "		Welland.....	12.00 "	5.55 "
	Allanburgh.....	8.55 "	3.55 "		Port Robinson.....	12.12 P.M.	6.07 "
	Port Robinson.....	9.03 "	4.03 "		Allanburgh.....	12.29 "	6.15 "
	Welland.....	9.15 "	4.15 "		Thorold.....	12.30 "	6.25 "
	Port Colborne.....	9.45 "	4.45 "		St. Catharines.....	12.50 "	6.45 "
	Buffalo..... Arr	12.15 P.M.	10.25 P.M.		Port Dalhousie... Arr	1.10 P.M.	7.10 P.M.

\* Flag Stations.

Cornelius Stovin, General Manager, St. Catharines, C. W.

# GREAT WESTERN RAILWAY.

Trains are run by Hamilton Time.

[May 13th

## WINDSOR TO SUSPENSION BRIDGE.

Miles	STATIONS.	Accom.	Morn'g Expr'ss	Day Expr'ss	Mixed.	Night Mail.	Steam- boat- Expr'ss
	WINDSOR..... Depart		4.00 AM	11.20 AM	8.25 AM	7.20 PM	11.50 PM
17 1/2	Belle River.....		4.35 "	12.00 "	9.55 "	7.55 "	12.05 AM
26	Stoney Point.....			12.20 PM	10.20 "		
31	Baptiste Creek.....			12.30 "	10.35 "	8.27 "	12.30 "
45 1/2	CHATHAM.....		5.35 "	12.03 "	11.30 "	9.00 "	1.00 "
54 1/2	Lewisville.....				12.15 PM		
60 1/2	Phanessville.....		6.10 "	1.35 "	12.45 "	9.35 "	1.30 "
68	Bothwell.....		6.25 "	1.55 "	1.20 "	9.50 "	1.47 "
73 1/2	Newbury.....		6.37 "	2.07 "	1.45 "	10.00 "	2.00 "
79 1/2	Glencoe.....		6.50 "	2.20 "	2.40 "		2.15 "
84	Appin.....				3.00 "		
89	Longwood.....		7.12 "	2.45 "	3.25 "	10.35 "	2.32 "
95	Mount Brydges.....		7.25 "	3.00 "	3.50 "		
99 1/2	Komoka.....		7.35 "	3.10 "	4.10 "	10.57 "	2.55 "
109 1/2	LONDON..... } Arrive		8.00 "	3.35 "	5.00 PM	11.20 "	3.20 "
	..... } Depart	6.20 AM	8.15 "	3.50 "		11.30 "	3.30 "
119 1/2	Dorchester.....	6.40 "	8.35 "	4.10 "		11.50 "	3.50 "
129	Ingersoll.....	7.05 "	8.55 "	4.32 "		12.08 AM	4.10 "
133 1/2	Beachville.....	7.15 "		4.45 "			4.25 "
138 1/2	Woodstock.....	7.27 "	9.15 "	5.00 "		12.30 "	4.35 "
142 1/2	Eastwood.....	7.40 "		5.15 "			
147 1/2	Arnolds.....	7.54 "		5.30 "			
150	Princeton.....	8.00 "	9.42 "	5.35 "		12.55 "	5.00 "
157	PARIS.....	8.10 "	10.00 "	5.55 "		1.10 "	5.15 "
166 1/2	HARRISBURG.....	8.47 "	10.20 "	6.20 "		1.32 "	5.40 "
170	Lynden.....	8.55 "		6.30 "			
174 1/2	Copetown.....	9.07 "	10.37 "	6.45 "		1.50 "	6.00 "
179 1/2	Dundas.....	9.23 AM	10.50 "	6.57 "			6.12 "
185 1/2	HAMILTON..... } Arrive		11.10 "	7.20 "		2.20 "	6.30 "
	..... } Depart		11.20 "	7.30 "		2.30 "	6.40 "
197 1/2	Ontario.....			8.00 "			
202 1/2	Grimsby.....		11.55 "	8.15 "		3.05 "	7.15 "
206 1/2	Beamsville.....			8.25 "			7.25 "
212	Jordon.....			8.40 "			7.37 "
217 1/2	St. Catharines.....		12.25 PM	8.55 "		3.40 "	7.50 "
219 1/2	Thorold.....		12.30 "	9.00 "		3.45 "	7.55 "
229	SUSPENSION BRIDGE..... Arrive		12.55 PM	9.25 PM		4.15 AM	8.20 AM

## TORONTO BRANCH.—HAMILTON TO TORONTO.

Miles	STATIONS.	Exp.	Accom.	Expr'ss	Accom.
	HAMILTON..... Depart	7.10 AM	9.50 AM	3.00 PM	7.25 PM
4	Waterdown.....	7.26 "	10.02 "		7.37 "
7	Wellington Square.....	7.38 "	10.12 "	3.17 "	7.45 "
13 1/2	Bronte.....	8.05 "	10.25 "	3.29 "	8.05 "
17	Oakville.....	8.27 "	10.40 "	3.40 "	8.15 "
25 1/2	Port Credit.....	8.48 "	11.05 "	3.59 "	8.40 "
32	Mimico.....	9.10 "	11.20 "		9.00 "
39	TORONTO, Yonge Street Station..... Arrive	9.35 AM	11.35 AM	4.40 PM	9.25 PM

GUELPH BRANCH.—Trains leave Harrisburg for Guelph at 8.50 A.M. 10.25 A.M., and 6.55 P.M. Returning, leave Guelph at 7.20 A.M. 2.45 P.M., and 4.50 P.M.

James Charlton, General Agent, Hamilton.

## PORTLAND and OXFORD CENTRAL RAILWAY.

Trains are run by Portland Time.

[Jan. 6th,

### Sumner to Mechanic Falls.

### Mechanic Falls to Sumner.

Miles	STATIONS.	Mail.	Miles	STATIONS.	Mail.
	SUMNER..... Depart	10.00 A.M.		MECHANIC FALLS..... Depart	3.30 P.M.
	Buckfield.....	10.20 "		Minot.....	3.45 "
	Hebron.....	10.40 "		Hebron.....	4.05 "
	Minot.....	11.00 "		Buckfield.....	4.20 "
	MECHANIC FALLS..... Arrive	11.15 A.M.		SUMNER..... Arrive	4.40 P.M.

\* Flag Stations.

F. W. Pelton, President, Boston.

# MICHIGAN CENTRAL RAILWAY.

## DETROIT TO CHICAGO.

[May 13th]

Miles	STATIONS.	Mail. P.	Day Express. P.	Evening Express, A. P.	Night Express. P.	Dexter Accomoda'n M. P.
	DETROIT.....	9.00 A.M.	9.40 A.M.	5.35 P.M.	10.30 P.M.	4.25 P.M.
3	G. T. Junction.....	6.15 "	9.55 "	5.50 "	10.45 "	4.40 "
10	Dearborn.....	6.35 "				5.00 "
17	Wayne.....	6.5 "				5.20 "
24	Ypsilanti.....	7.25 "	10.55 "	6.55 "	11.50 "	5.55 "
37	Ann Arbor.....	7.55 "	11.15 "	7.20 "	12.10 A.M.	6.20 "
47	Dexter.....	8.25 "	11.35 "			6.50 P.M.
54	Chelsea.....	8.45 "		8.05 "	12.57 "	
65	Grass Lake.....	9.15 "		8.35 "		
7	Jackson.....	9.45 "	12.35 P.M.	9.05 "	1.50 "	
8	Parma.....	10.15 "		9.25 "	2.20 "	
9	Albion.....	10.40 "	1.15 "	10.00 "	2.40 "	
10	Marshall.....	11.15 "	2.00 "	10.20 "	3.10 "	
12	Bat. Creek.....	12.00 P.M.	2.30 "	11.10 "	3.40 "	
13	Galesburg.....	12.35 "		11.55 "	4.15 "	
14	Kalamazoo.....	1.00 "	3.25 "	12.20 A.M.	4.40 "	
15	Lawton.....	1.45 "		1.00 "	5.25 "	
16	Decatur.....	2.25 "		1.20 "	5.45 "	
17	Dowagiac.....	2.42 "			6.13 "	
19	Niles.....	3.15 "	5.10 "		6.40 "	
19	Buchanan.....	3.32 "			7.18 "	
20	Dayton.....	3.43 "				
21	New Buffalo.....	4.23 "				
22	Michigan City.....	4.50 "	6.50 "	4.05 "	8.35 "	
24	Porter.....	5.20 "				
24	Lake, <i>Jol. Cut-off</i> .....	5.40 "	7.35 "	4.55 "	9.32 "	
26	Jalumet, <i>I. C. Junc.</i> .....	6.30 "	8.20 "	5.45 "	10.20 "	
28	CHICAGO.....	Arr	7.10 P.M.	9.00 P.M.	6.30 A.M.	11.00 A.M.

Refreshment Rooms at Detroit, Ann Arbor, Marshall, Niles, Lake, and Chicago.

M daily, except Saturday. P daily, except Sundays. A on Saturday—this train runs only to Jackson.

### STAGES LEAVE STATIONS AS UNDER.

WAYNE—For Plymouth and Northville, daily to and from.

YPSILANTI—For Saline daily at 12.30 P.M., returning from there at 9 A.M.

ANN ARBOR—Via Whitmore Lake and Hamburg, to and from Howell.

DEXTER—On Mondays, Wednesdays and Fridays, for Madilla, Williamsville, Stockbridge, Danville and Mason; returning Tuesday, Thursday, and Saturdays. Also, daily to and from Pinckney and Howell.

JACKSON—see time-table for Trains and Stages to Mason, Charlotte, Eaton Rapids, Lansing, &c. Stages also run to and from Jonesville and Concord.

ALBION—Each afternoon for Homer, Clarendon, and Jonesville, returning next morning.

MARSHALL—Daily from and to Charlotte, Olivet, Kalamazoo, Belvue, Coldwater and Tecosha.

R. N. Rice, General Superintendent, Detroit, Michigan.

### INTERNATIONAL STEAMSHIP COMPANY

BETWEEN BOSTON, PORTLAND, AND ST. JOHN, N.B.

The Steamers of the above Company leave St. John, N.B., for Boston and Portland on Mondays and Thursdays.

Steamers leave Boston Mondays and Thursdays for St. John N.B.; leaving Portland for St. John same evening at 5.00 P.M.

T. C. HERSEY, President, Portland.

H. J. LIBBY, Treasurer, do.

J. B. COYLE, Gen. Agent, Portland.

W. H. KILBY, Agent, Boston.

C. C. Eaton, Agent, Portland.

# MICHIGAN CENTRAL RAILWAY.

## CHICAGO TO DETROIT.

[May 13th]

Miles	STATIONS.	Day Express. P.	Mail. P.	Evening Express. C. N.	Night Express. M. & P.	Dexter Accom'n. P.
	CHICAGO.....	7.00 A.M.	9.30 A.M.	4.15 P.M.	9.40 P.M.	
15	Calumet, <i>J. C. Junc.</i> .....	7.40 "	10.15 "	4.55 "	10.20 "	
36	Lake, <i>Sol. Cut-off</i> .....	8.23 "	11.02 "	5.40 "	11.10 "	
44	Porter.....	8.40 "	11.30 "	5.55 "		
56	Michigan City.....	9.10 "	11.50 "	6.25 "	12.00 "	
66	New Buffalo.....	9.30 "				
83	Dayton.....		12.53 P.M.			
87	Buchanan.....		1.05 "			
93	Niles.....	10.30 "	1.40 "	8.05 "	1.50 A.M.	
106	Dowagiac.....	10.58 "	2.10 "	8.33 "	2.25 "	
117	Decatur.....	11.25 "	2.38 "	8.58 "		
125	Lawton.....	11.40 "	2.57 "	9.15 "		
141	Kalamazoo.....	12.18 P.M.	3.40 "	9.55 "	3.50 "	
150	Galesburg.....		4.03 "	10.15 "	4.15 "	
164	Bat. Creek.....	1.05 "	4.40 "	10.45 "	4.50 "	
177	Marshall.....	1.55 "	5.15 "	11.12 "	5.25 "	
188	Albion.....	2.20 "	5.45 "	11.35 "	5.55 "	
198	Parma.....		6.10 "		6.10 "	
208	Jackson.....	3.05 "	6.40 "	12.15 A.M.	6.50 "	4.35 A.M.
219	Grass Lake.....		7.05 "	12.35 "	7.15 "	5.05 "
230	Chelsea.....		7.33 "	12.57 "	7.40 "	5.35 "
237	Dexter.....		7.52 "		7.55 "	5.55 "
247	Ann Arbor.....	4.33 "	8.20 "	1.30 "	8.20 "	6.25 "
255	Ypsilanti.....	4.55 "	8.45 "	1.50 "	8.40 "	6.50 "
267	Wayne.....	5.20 "	9.15 "			7.25 "
274	Dearborn.....		9.35 "			7.45 "
281	G. T. Junc.....	5.50 "	9.55 "	2.45 "	9.45 "	8.05 "
284	DETROIT.....	6.10 P.M.	10.15 P.M.	3.00 A.M.	10.00 A.M.	8.20 A.M.

Refreshment Rooms at Detroit, Ann Arbor, Marshall, Niles, Lake, and Chicago.

N daily. M daily, except Saturdays. P daily, except Sundays. C on Saturday will run to Niles only.

## STAGES LEAVE STATIONS AS UNDER.

BATTLE CREEK—To Hastings daily at 2 P.M., from there at 7 A.M., and to and from Climax Prairie, Tuesdays and Fridays; to Charlotte, Wednesdays and back Tuesdays.

KALAMAZOO—Daily to Three Rivers, Grand Rapids, and Allegan at 7 A.M., to Hastings at 1 P.M., Mondays, Wednesdays and Fridays.

LAWTON—Thrice daily between Depot and Paw Paw.

DECATUR—Daily to and from Lawrence, and from Lawrence to and from St. Joseph and South Haven. Milbury Stages arrives at Decatur on Fridays and leaves on Saturdays.

Three Rivers Stage leaves Decatur Friday A.M., and returns Saturday.

DOWAGIAC—Each morning via Cassopolis and Edwardsburgh for Elkhart, and from Elkhart every morning via Edwardsburgh and Cassopolis, reaching Dowagiac about 5 P.M.

NILES—Daily to and from South Bend, St. Joseph and Berrein.

NEW BUFFALO to Laketon on Tuesdays, and back on Wednesdays.

MICHIGAN CITY—Daily to Laporte at 8 A.M., and from Laporte at 3 P.M.

W. K. Muir, Asst. Gen. Supt., Detroit, Michigan.

## PORTLAND STEAM PACKET COMPANY

BETWEEN PORTLAND AND BOSTON.

The Steamers of the above Company leave Atlantic Wharf, Portland, for Boston every evening (Sundays excepted) at 7 o'clock. Leave Boston the same days at P.M.

CABIN FARE.....\$1 50 — DECK FARE.....\$1.00.

CHARLES FORBES, President, Portland.

WM. KIMBALL, Treasurer, do.

J. B. COYLE, General Director, Portland.

L. BILLINGS, Agent, do.

WILLIAM WEEKS, Agent, Boston.

# NEW BRUNSWICK & CANADA RAILWAY.

## WINTER ARRANGEMENT.

St. Andrews to Woodstock Road.			Woodstock Road to St. Andrews.		
Miles	STATIONS.	Regular Train.	Miles	STATIONS.	Regular Train.
	ST. ANDREWS .....	Dep 10.00 A.M.		WOODSTOCK ROAD..	De 9 00 A. M.
5	Chamcook.....	10.20 "	2	McKenzie.....	9.10 "
11	Bartlett's.....	10.45 "	5	Debeck's.....	9.25 "
13	Wawieg.....	10.55 "	8	Wickham.....	9.45 "
15	Roix Road.....	11.15 "	13	Eel River.....	10.15 "
19	Hewitt's.....	11.35 "	25	Canterbury.. } .....	Ar 10 55 "
20	Rolling Dam .....	11.45 "		} .....	Dep 11.15 "
24	Dumbarton } .....	Ar 11.55 "	28	Deer Lake.....	11.25 "
	} .....	Dep 12.15 P. M.	43	Maudslay } .....	Ar 12.30 P. M.
29	Lawrence's .....	12.30 "		} .....	Dep 12.50 "
34	Barber Dam .....	12.45 "	50	Toby Guzzle.....	1.10 "
38	Toby Guzzle.....	12.55 "	54	Barber Dam .....	1.30 "
45	Maudslay } .....	Ar 1.10 "	56	Lawrence's .....	2.20 "
	} .....	Dep 1.30 "	64	Dumbarton.. } .....	Ar 2.45 "
50	Deer Lake.....	2.10 "		} .....	Dep 3.05 "
65	Canterbury.. } .....	Ar 2.40 "	68	Rolling Dam.....	3.20 "
	} .....	Dep 3.00 "	69	Hewitt's.....	3.25 "
75	Eel River.....	3.45 "	73	Roix Road.....	3.55 "
80	Wickham.....	4.15 "	75	Waweig.....	4.10 "
83	Debeck's.....	4.35 "	77	Bartlett's.....	4.25 "
86	McKenzie.....	4.50 "	83	Chamcook.....	4.45 "
88	WOODSTOCK ROAD..	Ar 5.00 P. M.	88	ST. ANDREWS.....	Arr 5 00 P. M.

This Train will leave St. Andrews for Woodstock Road every Monday, Wednesday and Friday; returning, will leave Woodstock Road every Tuesday, Thursday, and Saturday, at the above hours, until further notice.

HENRY OSBURN, *Manager*, St. Andrews, N. B.

## PORTLAND, BOSTON AND NEW YORK.

Via P. Saco and P., Eastern (Mass.) Boston and Worcester, Western (Mass.), New Haven Hartford and Springfield, and New York and New Haven Railways.

Portland to Boston and New York.				New York to Boston and Portland.			
Miles	STATIONS.	Pass'nger	Pass'nger	Miles	STATIONS.	Pass'nger	Pass'nger
	PORTLAND... Dep	8.40 A.M.	2.20 P.M.		N. YORK, 27th St. De	8.00 P. M.	
13	Saco.....	9.20 "	3.40 "	1	} 42d Street	8.08 "	
52	Portsmouth.....	11.30 "	4.55 "	57	Bridgeport.....	10.33 "	
108	Boston..... } Ar	1.45 P. M.	7.30 "	74	New Haven.....	11.20 "	
	} De	1.15 "	8.30 "	110	Hartford.....	12.40 A. M.	
152	Worcester.....	3.15 "	10.00 "	136	Springfield.... } Ar	1.44 "	
206	Springfield.... } Ar	5.45 "	12.00 Mid't		} De	2.10 "	
	} De	6.00 "	12.00 "	190	Worcester.....	4.15 "	
232	Hartford.....	6.50 "	12.55 A.M.	224	Boston..... } Ar	6.00 "	
268	New Haven.....	8.00 "	2.05 "		} De	7.30 "	
285	Bridgeport.....	8.35 "	2.50 "	290	Portsmouth.....	10.00 "	2.30 P. M.
341	New York, 42d St.	10.39 "	4.54 "	328	Saco.....	11.50 "	5.00 "
342	} 27th St. Ar	10.45 P. M.	5.00 A. M.	342	PORTLAND... Arr	12.30 P. M.	7.25 P. M.

Chas. Goodwin, President, Portland, Saco & Portsmouth R'y., Portsmouth, N. H.  
 George M. Browne, President, Eastern (Mass.) Railway, Boston, Mass.  
 Ginery Twichell, President, Boston & Worcester Railway, Boston, Mass.  
 Charles W. Chapin, President, Western (Mass.) Railway, Springfield, Mass.  
 C. F. Pond, President, New Haven, Hartford & Springfield R'y., Hartford, Conn.  
 George B. Carhart, President, New York & New Haven Railway, New York.

# EUROPEAN & NORTH AMERICAN RAILWAY.

## NEW BRUNSWICK.

May 1st.

ST. JOHN to SHEDIAC.				SHEDIAC to ST. JOHN					
Miles	STATIONS.	Express	Accommoda'n.	Accommoda'n.	Miles	STATIONS.	Accommoda'n.	Express	Accommoda'n.
	St. John .....	7.00AM.	2.00PM.	5.30PM.	1	Point du Chene .....		7.45AM.	11.45AM.
	3 Moose Path .....	7.08 "	2.10 "	5.40 "	2	Shediac .....		8.00 "	12.30PM.
	6 Torryburn .....	7.14 "	2.18 "	5.48 "	7	Dorchester Road .....			12.42 "
	7 Appleby's .....	7.18 "	2.23 "	5.53 "	15	Hook's Brook .....	3 26 "		1.02 "
	9 Rothesay .....	7.23 "	2.30 "	6.00 "	17	Humphrey's Mills .....			1.14 "
	12 Quispamsis .....	7.32 "	2.42 "	6.12 "	19	Moncton .....	8 45 "		1.45 "
	17 Nauwigewauk .....	7.45 "	3.00 "	6.35 "	23	Boundary Creek .....	9.09 "		2.19 "
	22 Ossekeag .....	8.00 "	3.30 "	7.05 "	32	Salisbury .....	9.17 "		2.35 "
	25 Passekeag .....	8.12 "	3.45 "	7.22 "	37	Pollet River Road .....	9.29 "		2.52 "
	27 Bloomfield .....	8.16 "	3.50 "	7.28 "	42	Petitcodiac .....	9.42 "		3.10 "
	31 Athol .....		4.02 "	7.41 "	48	Anagance .....	10.05 "		3.30 "
	33 Norton .....	8.29 "	4.07 "	7.47 "	52	Portage .....			3.45 "
	34 Apohaqui .....	8.47 "	4.30 "	8.12PM.	57	Dunsinane .....	10.19 "		3.51 "
	44 Sussex .....	9.20 "	5.05 "	8.30PM.	57	Penopsquis .....	10.28 "		4.04 "
	47 Plumweseep .....		5.16 "		61	Plumweseep .....			4.19 "
	51 Penopsquis .....	9.37 "	5.32 "		62	Sussex .....	6.30AM.	11.00 "	4.50 "
	55 Dunsinane .....	9.45 "	5.45 "		69	Apohaqui .....	6.48 "	11.13 "	5.06 "
	56 Portage .....		5.51 "		75	Norton .....	7.13 "	11.31 "	5.29 "
	61 Anagance .....	10.00 "	6.05 "		77	Athol .....	7.19 "		5.35 "
	65 Petitcodiac .....	10.14 "	6.25 "		81	Bloomfield .....	7.32 "	11.44 "	5.47 "
	72 Pollet River Road .....	10.26 "	6.44 "		82	Passekeag .....	7.38 "	11.48 "	5.52 "
	76 Salisbury .....	10.38 "	7.04 "		86	Ossekeag .....	8.05 "	12.00 "	6.15 "
	79 Boundary Creek .....	10.45 "	7.16 "		91	Nauwigewauk .....	8.25 "	12.15 "	6.33 "
	80 Moncton .....	11.15 "	8.10 "		96	Quispamsis .....	8 44 "	12.29 "	6.50 "
	91 Humphrey's Mills .....		8.16 "		97	Rothesay .....	8.56 "	12.38 "	7.00 "
	95 Cook's Brook .....	11 30 "	8.28 "		101	Appleby's .....	9.04 "	12.43 "	7.08 "
	102 Dorchester Road .....		8.48 "		102	Torryburn .....	9.10 "	12.47 "	7.15 "
	105 Shediac .....	12.20 "	9.00PM.		105	Moose Path .....	9.19 "	12.53 "	7.23 "
	108 Point du Chene .....	12.25PM.			108	St. John .....	9.30AM.	1.00PM.	7.35PM.

J. EDWARD BOYD, Superintendent, St. John, N.B.

## LAKE CHAMPLAIN AND LAKE GEORGE.

THIR ELEGANT STEAMERS OF THE

CHAMPLAIN TRANSPORTATION COMPANY



CANADA, - - - - - CAPT. WM. ANDERSON  
 UNITED STATES, - - - - - " J. C. BABBITT  
 ADIRONDAC (new) - - - - - " WM. H. FLAGG

Will form two Daily Lines between

ROUSE'S POINT AND WHITEHALL,

Leaving Rouse's Point on the arrival of the Morning and Evening Trains from Montreal, and making close connections at Whitehall with Trains for

SARATOGA, SCHENECTADY, TROY, ALBANY, AND NEW YORK.

The Morning Boat will make close connections at TICONDEROGA with the beautiful Steamer "Min-ne ha-ha," passing through LAKE GEORGE.

The splendid Scenery of Lake Champlain and Lake George no Tourist should fail of enjoying.

Tickets can be procured at the Offices of the Grand Trunk Railway, on board Lake Ontario Steamers, and at the Ticket Offices at Niagara Falls.

HIRAM TRACY,

Burlington, Vt., May, 1867.

General Supt.



# H I N T S

TO

## R A I L W A Y T R A V E L L E R S .

You will save money by purchasing your Tickets before entering the cars.

**CHECK YOUR BAGGAGE** and the Company will then be responsible for it. Baggage in Passenger Cars is a source of anxiety to the owner: causes inconvenience to others; and is unsightly and altogether out of place.

Baggage can be checked *through* from places in Canada to the United States and *vice versa*; but in such cases the law requires each Passenger to point out his Baggage to the Customs' Officer at the Frontier Station, in order that it may be examined.

The following is a list of Custom House Stations:—

	<i>American.</i>	<i>Canadian.</i>
Between PORTLAND and MONTREAL.....	ISLAND POND...	COATICOOK
“ NEW YORK or BOSTON and MONTREAL.....	ROUSE'S POINT & ST. ALBANS.....	ROUSE'S POINT & ST. ARMAND
“ MONTREAL and PLATTSBURGH.....	MOORE'S JUNC...	HEMINGFORD
“ UNITED STATES and CANADA <i>via</i> OGDENSBURGH	OGDENSBURGH...	PRESCOTT
“ NEW YORK or BUFFALO and DETROIT or CHICAGO.....	BUFFALO.....	FORT ERIE
“ TORONTO and DETROIT.....	PORT HURON....	SARNIA
	PORT HURON....	SARNIA

Avoid altercations with Conductors or other Employés of the Company. If you have a grievance make it known by letter to the Managing Director at Montreal and you will obtain redress. Conductors have very responsible and arduous duties to perform on the journey, which require the utmost diligence on their part, and they have not time to enter into long discussions.

IT IS DANGEROUS to stand on the platform of cars or move from one car to another, or attempt to get on or off whilst the Train is in motion. Heads and arms are safest when they are *inside* the car windows.

## R A I L W A Y & S T E A M B O A T C O N N E C T I O N S .

THE GRAND TRUNK RAILWAY COMPANY runs its Trains in direct connection with the following Railways and Lines of Steamers, viz:—

At BUFFALO.....	New York Central and New York & Erie Railways.
“ DETROIT.....	Michigan Central, Michigan Southern, and Detroit & Milwaukee Railways.
“ SARNIA.....	During season of navigation a Daily Line of first-class Steamers to Milwaukee and Chicago; also Regular Lines of Steamers to Green Bay and all Ports on Lakes Huron, Michigan, and Superior.
“ GODERICH.....	During season of navigation Regular Lines of Steamers to Milwaukee and Chicago and other Lake Ports.
“ LONDON.....	London and Port Stanley Railway.
“ TORONTO.....	Northern and Great Western Railways.
“ PORT HOPE.....	Port Hope, Lindsay and Beverton Railway.
“ KINGSTON.....	Rome, Watertown and Ogdensburgh Railway.
“ BROCKVILLE.....	Brookville and Ottawa Railway.
“ PRESCOTT.....	Ottawa and Prescott Railway, and Northern Railroad of New York.
“ PROVINCE LINE.....	Plattsburgh Railway.
“ LACHINE.....	During navigation a Daily Line of Steamers to Ottawa.
“ MONTREAL.....	During season of navigation a Weekly Line of Steamers to Liverpool and a Regular Line to Glasgow.
“ ST. JOHNS.....	Stanstead, Shefford & Chambly, and Vermont Central R'ys.
“ ROUSE'S POINT.....	Vermont Central Railway for New York and Boston.
“ QUEBEC.....	During season of navigation a Weekly Line of Steamers to Liverpool and Regular Line to Glasgow.
“ MECHANIC FALLS.....	Oxford Central Railway.
“ DANVILLE JUNCTION.....	Maine Central Railway.
“ PORTLAND.....	Boston and Maine and Eastern Railroads. Regular Line of Steamers to Eastport, St. John, N. B., and Halifax, N. S., also to Boston and New York. During Winter, whilst the navigation of the St. Lawrence is closed, a Weekly Line of Steamers to Liverpool.



# STAGES, NEAREST TOWNS, &c.

## QUEBEC DISTRICT.

RIVIERE DU LOUP .....	Tri-weekly Stages to Grand Falls and Woodstock, connecting at the latter place with the Railway to St. John and all places in New Brunswick and Nova Scotia.
CRAIG'S ROAD .....	St. Sylvester, 23 miles; Leeds, 40 miles.
BLACK RIVER .....	St. Appollinaire, 6 miles; St. Antoine, 9 miles.
METHOT'S MILLS .....	Sts. Agathe, 9 miles; Leeds and Inverness, 15 miles; Harvey Hill Copper Mines, 21 miles; St. Croix, 15 miles; Lotbiniere, 27 miles,
BECANCOUR .....	Stages daily to St. Jules Village, 2 miles; Inverness, 10 miles; Leeds, 20 miles.
SOMERSET .....	Tri-weekly stage to Halifax, 13 miles, and Maple Grove, 16 miles.
STANFOLD .....	St. Norbert, 6 miles; St. Sophie, 6 miles; Nicolet, 4 miles.
WARWICK .....	St. Patrick of Tingwick, 5 miles; Kingsey Falls, 7 miles; St. Albert of Warwick, 6 miles.
DANVILLE .....	Tingwick, Windsor, and Kingsey.
RICHMOND .....	Melbourne.

## EASTERN DISTRICT.

RICHMOND .....	Daily Stages to Trenholmvile, Kingsey, Durham, L'Avenir, and Drummondville. Tri-weekly Stages to Stukeley, Lawrenceville and Waterloo.
SHERBROOKE .....	Daily Stages to Magog Outlet (Lake Memphromagog) Bury, and Eaton, and Tri-weekly to Weedon.
LENNOXVILLE .....	Daily Stages to Eaton, Bury, Tingwick and Winslow Townships, running through, or connecting with other stages for Villages of Barchton, Eaton Corners Sawyerville, Robinson, Gould and Stormaway. Also Tri-weekly to Westbury and Dudswell.
WATERVILLE .....	Stages twice-a-week to North Hatley.
COMPTON .....	Daily to Hatley, East and West, and Stanstead.
COATICOOKE .....	Daily to Barnston and Stanstead.
ISLAND POND .....	Daily to East and West Charleston, Derby Centre, Derby Line and Stanstead
NORTH STRATFORD .....	Daily to Colebrook, West Stewartston, N.H., and Canaan, Vt.,
NORTHUMBERLAND .....	Daily to Lancaster, Littleton, and St. Johnsbury.
GORHAM .....	Stages to Bartlet, Jackson, Randolph, Lancaster and Jefferson. In Summer to Glen House and summit of Mount Washington, connecting at Glen House with stages for Jackson, Conway, Bartlet, and Crawford House.
SOUTH PARIS .....	Tri-Weekly to Frifeburg, Lovel and Waterford. Daily to Bridgeton and Harrison, going through to Frifeburg Monday, Wednesday, and Friday.

## CENTRAL DISTRICT.

ST. ANN'S .....	Boat daily to Ottawa.
VAUDREUIL .....	Stage connects with all Express Trains for Rigand, Point Fortune and Carillon.
COTEAU LANDING .....	Mail daily for St. Polycarpe, Peverel, Stackhouse's Mills, and Mongenas.
LANCASTER .....	Daily for Alexandria, Vankleek's Hill, West Hawkesbury and L'Original.
CORNWALL .....	Ferry daily at 8 A. M. for Baker's Wharf, Summerstown, St. Regis, Dundee, C. E., Hogansburg, and Fort Covington, during navigation.
DICKINSON'S LANDING .....	Monday, Wednesday, and Friday for Lanenburg, Newington, Berwick, and Chrysler's.
AULTSVILLE .....	A Ferry connects with every Passenger Train for Massena Springs; distance from Aultsville 7 miles: Stage at Louisville Landing connects with Trains and Ferry

## CENTRAL DISTRICT,—(Continued.)

WILLIAMSBURG .....	Monday, Wednesday and Friday, for Bell's Corners and Winchester.
MATILDA .....	Mail Monday, Wednesday, and Friday, 6 A.M., for South Mountain, Dixon's Corners, and Inkermann.
BROCKVILLE .....	Daily to Farmersville and Westport. Stages connect with B. & O. Trains at Perth for Merriekville; at Almonte for Packingham; at Arnprior for Renfrew.
KINGSTON .....	Daily to Bath, Picton, Odessa, Clark's Mills, Centreville, Tamworth, Elginburg, Railtown, and Sydenham; Tuesday, Thursday, and Saturday to Grenvale and Harrowsmith; Wednesday and Saturday to BATERSEA.
NAPANEE .....	One horse wagon daily to Newburgh, Camden East, and Centreville.
BELLEVILLE .....	Daily for Sterling, Tweed, Bridgewater, Marmora and Madoc.
TRENTON .....	Daily for Frankford.
BRIGHTON .....	Daily to Picton, Wellington, Consecon, and District of Prince Edward: Mondays, Wednesdays and Fridays to Campbellford. Steamers "Empress" and "Rochester" 6 A.M., for Rochester daily.
COLBORNE .....	Daily to Castleton, Warkworth, Percy, Hastings, and Norwood.
COBOURG .....	Stage Tuesday, Thursday and Saturday, for Cold Springs and Gore's Landing. (Rice Lake.)
PORT HOPE .....	Steamers to Rochester, connecting there with N. Y. C. R. R.
BOWMANVILLE .....	Daily for Hampton, Enniskillen, Tyrone, Charlesville, Williamsburg and Seugog Lake.
OSHAWA .....	Daily for Columbus, Raglan, Prince Albert, Manchester, Borelia, Port Perry, Sonya, Manilla, Cannington, Beaverton, Simcoe, Argyle, Oakwood, and Lindsay.
PORT WHITBY .....	Daily for Manchester, Port Perry, Prince Edward, Manilla, Lindsay, Beaverton, Ashburn, Utica, Epsom and Uxbridge.
SCARBORO .....	Daily to Markham and Stouffville.

## WESTERN DISTRICT.

WESTON .....	Daily for Thistleton, Woodbridge, Pine Grove, and Klienburg. Stage connection at Thistleton for Clairville, Cohain and Bolton Village.
MALTON .....	Daily to Grabamsville, Stanley Mills, Tullamore, Sand Hill, Munsie's Corners, and Mono Mills.
BRAMPTON .....	Daily to Cheltenham, Charlestown, Sligo, Campbell's Cross, Alton, and Orangeville.
GEORGETOWN .....	Stage daily to Stewarton, Ashgrove, Hornby, Milton, and to Silver Creek, Ballinafad, Erin, and Hillsburg.
GUELPH .....	Daily to Elora, Fergus, Mount Forest, Durham, and Owen Sound. To Dundas and Hamilton.
BERLIN .....	Daily for Glen Allen and Preston.
BADEN .....	Daily to Wellesley Village, Lisbon and Phillipsburg.
STRATFORD .....	Stage to Millbank, Monday, Wednesday and Friday.
LONDON .....	Stage for Exeter, Belmont, and Clinton.
LUCAN .....	Daily for Adare, Devon, Exeter, Francistown, Rogerville and Clinton, Elginfield, St. Johns, and London.
WIDDER .....	Daily to Pine Hill, Sylvan, and Arkane.
FORREST .....	Tuesday, Thursday, and Saturday, Stage for Hillsboro.
PORT HURON .....	Daily to Lakeport, Lexington, Forrestville, and Forrester, and from Port Huron to Clyde, Fairfield, Kenockel and Brockway.
RIDGWAY .....	Stages twice daily to Romeo, Raydomada, Burke Corners, Richmond and Memphis; daily to Almonte. On closing of navigation, daily to St. Clair City and Columbus.
NEW BALTIMORE .....	Stage twice daily to Baltimore. On close of navigation daily to Algonac and Newport.

## BUFFALO AND GODERICH DISTRICT.

CANFIELD .....	Stages to Cayuga.
CALEDONIA .....	Daily to Hamilton, Port Dover and Simcoe.
BRANTFORD .....	Stages to Simcoe.
TAVISTOCK .....	" Woodstock.
SEAFORTH .....	" Brucefield, Varna, Bayfield, Ainleyville, Wroxeter &c.
CLINTON .....	Stages to Bruceville, Rogersville, Francistown, Exeter, and St. Johns.
GODERICH .....	Stages to Kincardine, Lucknow, &c.

# THE PEOPLE'S LINE STEAMERS

*C. V A N D E R B I L T*

CAPTAIN THOS. D. CHRISTOPHER,

AND


*D E A N R I C H M O N D*

CAPTAIN E. F. CURTIS,

LEAVE ATHENS DAILY (EXCEPT SUNDAY), at 10 o'clock,  
P.M., on arrival of Express Trains from the  
NORTH AND WEST,

Reaching NEW YORK early next morning in time to  
connect with Trains for

PHILADELPHIA, BALTIMORE & WASHINGTON.

 *The Boats land in New York adjoining the ferry  
which takes passengers to the South.*

---

## THE STEAMERS

*S T. J O H N*

CAPTAIN W. H. CHRISTOPHER,

AND

*D R E W*

CAPTAIN S. J. RAE,

Also Leave ALBANY every evening (except Sunday),  
at 7 o'clock, P. M., reaching NEW YORK  
early next morning.

**MERCHANT TAILORS.**

**ALBION CLOTH HALL,**  
 J. D. ANDERSON, Merchant Tailor,  
 64 Great St. James Street, Montreal,  
 [opposite the Bank of Upper Canada.]  
 10.7

**ROBERT SEATH,**  
 Wholesale Clothier and Importer,  
 No. 10 St. Joseph Street, Montreal.  
 10.7

**WOODEN WARE, &c.**

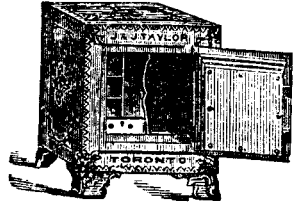
**NELSON, WOOD & CO.,**  
 (Successors to Nelson & Butters,)  
 Importers and Wholesale Dealers in European  
 and American Fancy Goods, Paper Hangings,  
 Clocks, Looking Glasses, and Looking Glass  
 Plates, Manufacturers of Brooms, Wooden  
 Ware and Matches,  
 29 St. Peter Street, Montreal.  
 H. A. Nelson. A. S. Wood. A. D. Nelson.  
 10.7

**COBOURG, C. W.**

**THE PAUWELS HOUSE,**  
 COBOURG, C. W.  
 ———  
 House and Furniture entirely New.  
 ———  
 E. PAUWELS, Proprietor.  
 12.7

**PRESCOTT.**

**INTERNATIONAL HOTEL,**  
 PRESCOTT, C. W.  
 ———  
 L. H. DANIELS, - - PROPRIETOR.  
 ———  
 Second to no house in Central Canada.  
 10.7

**TORONTO.****TORONTO SAFE WORKS.**

**J. & J. TAYLOR,**  
 TORONTO,  
 Manufacturers of  
**Fire- & Burglar-Proof Safes,**  
 the only Safes for sale in Canada that  
 never fail to preserve their contents even in  
 the hottest fires.  
 AGENTS:  
 JAMES HUTTON & CO.,  
 15 St. Helen Street, Montreal.  
 H. S. SCOTT & CO.,  
 22 Buade Street, Quebec.  
 Manufactory - Palace Street, Toronto.  
 Send for a Price List.  
 4.7

**OIL! OIL!! OIL!!!**

The LUBRIC OIL, manufactured by us, is the Cheapest and Best  
 LUBRICATOR in the Market, for Steam-Engines and all kinds of  
 heavy Machinery. It is put up in superior packages for Shipment.

**LUBRIC OIL COMPANY,**

BRANTFORD, C.W.

JOHN H. STRATFORD, *Manager.*

Agents in Montreal:

**MESSRS. KERRY BROTHERS & CRATHERN.**

6.7.P

**GROCGERS.****WM. D. McLAREN,**

Dealer in

**TEAS, COFFEES, SPICES**

AND

All the best descriptions of

Family Groceries,

No. 153 St. Lawrence Main Street,

Montreal.

N.E.—Genuine Portland Kerosene Oil constantly on hand.

**KINGAN & KINLOCH,**

St. Peter Street, Montreal,

Importers of Teas and General Groceries,

Liquors and Wines.

We keep constantly on hand Refined, Cuba, and Porto Rico Sugars; Syrups, Molasses, Coffees, Spices, Raisins, Currants, Nuts, Vinegar, Oils, Candles, Soaps, Starch, Blacking, Drysalteries, Dye-Staffs, Pickles, Brooms, Pails, Cordage, Fish, &c., &c.

AND

Tobaccoes, various brands and qualities.

Pipes, plain and fancy.

10.7

**WINE MERCHANTS.****DAVIE, CLARKE AND  
CLAYTON,**

Successors to

**BACON, CLARKE & CO.,**

Importers of

**WINES, SPIRITS, CIGARS, &c.,**

46 St. Peter Street,

Opposite St. Sacrament Street,

Montreal.

4.7

**ALFRED RIMMER,**

(Under Waddell &amp; Pearce.)

27 JOHN STREET,

MONTREAL.

Seltzer Water,

Rhenish Wines,

Light French Wines.

Pemartin's Sherry,

Sandeman's Port,

All from the places of growth.

To each bottle of Claret add one of Soda Water, one wine-glass of Curaçoa or two of Sherry, the Peel of a Lemon cut very thin, and powdered sugar according to taste. Put in two sprigs of Burrage, and let the whole stand one hour; add some lumps of ice, and it is ready for use.

Burrage may always be had from Mr. Rimmer on application.

9.7

**BREWERS.****JOHN H. R. MOLSON & BROS.,****BREWERS, DISTILLERS,**

AND

**SUGAR REFINERS,**

Have for Sale:—

**REFINED SUGARS****SYRUPS—Standard and Golden****WHISKY—50 o. p., Alcohol and Pure Spirit****OLD RYE WHISKEY and VINEGAR****INDIA PALE ALE, in wood and bottle****MILD ALE, do do****PORTER, do do**

*TD* Families regularly supplied at their residences with Ales and Porter.

OFFICES:—Corner of Bonaventure and Cemetery Streets (opposite the R. R. Station), and 222 and 286 St. Mary Street.

10.7

**OILS, SOAPS.****ALFR'D SAVAGE & SON**

MONTREAL,

Manufacturers of

**LARD, WHALE, and MACHINERY OILS,**

Importers of

**OLIVE, COD, and SEAL OILS.****TRINDER'S TOILET SOAPS,**

1 ton each.—Honey, Brown Windsor, Glycerine, Elder, Rose, Glycerine and Almond, in tablets, put up in quarter-Gross Boxes, constantly on hand.

ALSO.  
WHALE OIL SOAP for Fullers' use, in barrels. 7.7.P

**SADDLERY.****JOHN C. McLAREN,****SADDLERY EMPORIUM,**

149 Great St. James Street, Montreal.

Importer of London made Saddlery, Bridles, Bits, Whips, Spurs, &c.

All goods in the line kept and supplied monthly per Canadian Royal Mail Steamships.

Orders executed with promptness.

10.7

**HARDWARE.****ALFRED BROWN,**

Importer of all kinds of

**METALS**

and

**HEAVY HARDWARE,**

20 &amp; 22

St. SACRAMENT STREET,

MONTREAL.

9.7

**MULHOLLAND & BAKER**

Importers of all kinds of

**IRON AND STEEL,**

Heavy Hardware and Shelf Goods,

Montreal.

419 &amp; 421 St. Paul Street.

Yard Entrance. St. Francois Xavier St.

10.7

**FERRIER & CO.,****HARDWARE MERCHANTS,**

Wholesale Ware Rooms,

Entrance

No. 24 &amp; 26 St. Francois Xavier Street,

Montreal.

10.7

**FROTHINGHAM & WORKMAN,**

(Established 1809,

Importers, Manufacturers and Wholesale

Dealers in

**IRON, STEEL, TIN, ANCHORS, CHAINS,**

AND

**GENERAL HARDWARE,**

Warehouse and Offices :

St. Paul Street, Montreal.

Manufactories : Cote St. Paul, near Montreal.

10.7

**HARDWARE, &c.****JAS. WALKER & CO.,**

Importers of

British, American and German

**HARDWARE,**

House Furnishings, Cornices, &amp;c.,

106 GREAT ST. JAMES STREET,

(Mechanics' Hall Buildings.)

10.7

Montreal.

**PRINTERS & PUBLISHERS.****J. C. BECKETT'S**

Steam

**BOOK AND JOB PRINTING**

Establishment,

No. 84 GREAT ST. JAMES STREET,

Montreal.

7.7

**JAMES STARKE & CO.,****GENERAL PRINTERS,**

No. 54 St. Francois Xavier Street,

Corner St. Sacrament Street,

MONTREAL

ALL KINDS OF

**PLAIN & ORNAMENTAL PRINTING**

Executed in the neatest style.

10.7

**BOOK & JOB PRINTING**

AND

**BLANK ACCOUNT BOOKS.**

Having made extensive additions to his Premises in St. Nicholas Street, the undersigned is enabled to undertake the execution at the shortest notice and with utmost despatch, of

Every description of Printing,

From the largest Volumes to the briefest Pamphlets, and from Mammoth Posters to the smallest Jobs.

Particular attention given to the manufacture of

All kinds of Blank Books,

for Banks, Merchants, Assurance Companies, &c.

**JOHN LOVELL,**

Printer and Blank Book Manufacturer.

18, 20 and 22 St. Nicholas Street,

Montreal.

10.7

# GRAND TRUNK RAILWAY OF CANADA



AND



## MONTREAL OCEAN STEAMSHIP COMPANY.

1867.

WEEKLY LINE.

1867.

### GREAT FREIGHT ROUTE

BETWEEN

## EUROPE AND NORTH AMERICA.

The MONTREAL OCEAN STEAMSHIP COMPANY'S LINE of powerful Screw Steamers will, during the SUMMER, make

### ONE TRIP WEEKLY BETWEEN LIVERPOOL & MONTREAL

There connecting with the GRAND TRUNK RAILWAY,

THUS FORMING THE

MOST DIRECT ROUTE TO AND FROM ENGLAND AND THE WESTERN STATES OF THE UNION.

### ONLY TWO TRANSHIPMENTS

BETWEEN LIVERPOOL AND CHICAGO, OR CINCINNATI.

### GOODS SENT THROUGH IN BOND.

The Agents in Liverpool sign Through Bills of Lading containing Through Rates of Freight, which include all expenses (Insurance and Wharfage Charges excepted) from the Ship's side to the Railroad Depots of the under-mentioned Cities.

Rates of Freight for Consignments of not less than 20 cubic feet, or 1,000 lbs.

FROM LIVERPOOL (Via Montreal)	DRY GOODS.			HARDWARE.			NAILS, CUTLERY, FILES, NAILS, SODA, STEEL, TIN, WIRE, AND ZINC.			CROCKERY.		
	¢ 40 Cubic feet			In Cses & Cskt. ¢ 2000 lbs.			¢ 2000 lbs.			¢ 2000 lbs.		
TO	STG.	\$	C.	STG.	\$	C.	STG.	\$	C.	STG.	\$	C.
BUFFALO, NEW YORK... } DETROIT, MICHIGAN.... }	75s	18	25	5s	23	12	60s	12	60	55s	13	38
CHICAGO, ILLINOIS } MILWAUKEE, WIS } Rail. }	92s4	22	47	120s	29	30	85s	20	69	69s	16	80
CHICAGO, IL. } MILWAUKEE, } Lake WISCONSIN. } from } St. Louis } Illino. }	82s	19	95	110s	26	76	75s	18	25	59s	14	35
CINCINNATI, OHIO.....	92s4	22	47	120s	29	30	85s	20	69	69s	16	80
ST. LOUIS, MISSOURI.....	118s6	28	85	155s	37	72	102s	24	80	97s	23	60

No charge made for Customs or Bonding Charges at Montreal. The wharfage dues will be the only charge in addition to the through rate

☞ Packages containing Goods in more than one class, will be charged the highest class, and the attention of Shippers and Importers is particularly called to the importance of describing contents of Packages in Bills of Lading, and inserting correct rates therein, as no alteration or correction can be made at the port of destination.

THE FIRST STEAMSHIP FOR MONTREAL LEAVES LIVERPOOL  
ON OR ABOUT 20TH APRIL.

---

TO ENGLISH SHIPPERS.

☞ Particular attention is again directed to the necessity of transmitting Bills of Lading and Invoices of Value of Goods, certified by nearest American Consul, by Mail (pre-paid) addressed to Mr. F. C. STRATTON, General Eastern Freight Agent of the Grand Trunk Railway, Montreal, many cases of delay having occurred for want of these papers, as the Goods cannot be forwarded until they are received.

TO UNITED STATES IMPORTERS.

Consignees in the United States are requested, immediately on receipt of Invoices of Goods, to have them attested before the Collectors of their respective Ports and forwarded to Mr. R. P. HORSMAN, Agent for Grand Trunk Railway, Port Huron, Mich. WHEN SHIPPED VIA SARNIA LINE THESE DOCUMENTS ARE NOT REQUIRED

N. B.—Shippers will find it advantageous to forward Goods via SARNIA LINE as they will have Special Despatch by this Route.

---

Produce conveyed to Liverpool as cheap as by other routes.

For Rates and other information apply to

GRAND TRUNK RAILWAY COMPANY'S OFFICE, 21 Old Broad Street, LONDON.  
MONTGOMERIE & GREENHORN, Montreal Ocean Steamship Co.'s Office, LONDON.  
ALLAN BROTHERS & Co., Weaver Buildings, Brunswick Street, LIVERPOOL.  
JAMES & ALEXANDER ALLAN, No. 70 Great Clyde Street, GLASGOW.  
W. THARP, Agent Grand Trunk Railway, DETROIT, Michigan.  
J. WALSH, Agent Grand trunk Railway, CHICAGO, Illinois.  
A. T. SPENCER, Agent Grand Trunk Railway, CHICAGO, Illinois.  
TAYLOR & BROTHER, Agents Grand Trunk Railway, CINCINNATI, Ohio.  
JOHN H. MUIR, Agent Grand Trunk Railway, MILWAUKEE, Wisconsin.  
—————, Agent Grand Trunk Railway, ST. LOUIS, Missouri.  
R. CALVERT, Agent Grand Trunk Railway, BUFFALO

H. & A. ALLAN, Agents,

*Montreal Ocean Steamship Co'y*, MONTREAL, C.E.

F. C. STRATTON, General Eastern Freight Agent,

*Grand Trunk Railway Company*, MONTREAL, C.E.

P. S. STEVENSON, General Western Freight Agt.

*Grand Trunk Railway Company*, TORONTO, C.W.

C. J. BRYDGES,

Managing Director,  
*Grand Trunk Railway.*



**BOOKSELLERS, &c.****ROBERT MILLER,**

(Late R. &amp; A. Miller,)

**PAPER MAKER,****WHOLESALE STATIONER,****BOOK BINDER**

Account Book Manufacturer,

and Importer of

Window Shades and Wall Papers.

Agent for

**LOVELL'S SERIES OF SCHOOL BOOKS.**

Works:

Sherbrooke Paper Mills, Sherbrooke;

Office and Saleroom:

60 St. Francois Xavier Street,  
10.7 Montreal.**THOS. RIDDELL & CO.,**

Importers of

British and Foreign Stationery,

Wholesale and Retail,

54 &amp; 56 Great St. James Street,

10.7 Montreal.

**SHOE & LEATHER DEALERS.****AMES, MILLARD & CO.,**Manufacturers of and Wholesale Dealers  
in

Boots and Shoes,

No. 15 Saint Peter Street, Montreal.

10.7

**WM. McLAREN & CO.,**Manufacturers of and Wholesale Dealers  
in**BOOTS AND SHOES.**

15 and 17 Lemoine Street, Montreal.

8-7.P.

**HUNTER, DUFFY & JOHNSON,**

Wholesale Manufacturers of

**BOOTS AND SHOES,**

20 St. Helen Street, Montreal.

8-7.P.

**WATCHES, JEWELLERY, &c.**

Established 1818.

**SAVAGE & LYMAN**Have constantly on hand a large and well-  
selected Stock of**GOLD AND SILVER WATCHES,**

Jewellery of all kinds,

English, French, and American Clocks.

**BEST ELECTRO-PLATED WARE,**

In all its varieties of manufacture;

Bronze and Parian Ware,

Table Cutlery,

Penknives,

Scissors,

Razors,

Dressing Cases in Leather and Wood,

Bronze Urns and Kettles.

Electro-plated Spoons, Forks, Ladles, &amp;c.

**THERMOMETERS, BAROMETERS,****MICROSCOPES,**

Telescopes, Opera dan Field Glasses,

Spectacles, Eye Glasses, &amp;c.

S. & L. are constantly manufacturing  
**SILVER TEA AND COFFEE SETS,**  
Jugs, Cups, Salvers, Trays, Inkstands, Forks,

Spoons, Ladles, Napkin Rings,

Butter Knives, &amp;c., &amp;c.

Glass Gas Gasaliers.

Regulation Swords, Belts, Sashes, &amp;c., &amp;c.

**RIFLES,**

Of various celebrated Makers.

S. & L. respectfully invite Travellers and  
Strangers to visit their establishment,**CATHEDRAL BLOCK,**

Notre Dame Street,

10.7

Montreal.

**KINGSTON.****CANADIAN  
ENGINE AND MACHINERY COMPANY.**

*Authorized Capital, \$800,000. Paid up, \$200,000.*

Works, KINGSTON, Canada West,  
June, 1865.

This Company's Works, situated on Lake Ontario, and connected by a siding with the Grand Trunk Railway of Canada, are now in full operation, and the Company is prepared to build LOCOMOTIVE, MARINE, and FIRE ENGINES, and Machinery generally, IRON STEAM VESSELS, &c., &c.

There has lately been constructed at this Company's Works one of the fastest Iron Steamers now on the lakes, the property of C. F. Gildersleeve, Esq.

The Works are under the charge of a practical Superintendent.

Estimates (on specifications) or any other information, can be obtained on application to the undersigned.

**ROBERT WRIGHT,**

*Secretary and Treasurer.*

77

**HARTFORD.****TICKETS OF INSURANCE AGAINST ACCIDENTS!**

RESULTING IN LOSS OF LIFE OR PERSONAL INJURY,

ISSUED BY THE

**RAILWAY PASSENGERS ASSURANCE COMPANY  
OF HARTFORD, CONNECTICUT.**

Paid-up Capital, - - - - - \$304,800.

JAMES G. BATTERSON, *President.*

HENRY T. SPERRY, *Secretary.*

**TRAVELERS RISK TICKETS, 10 cents per day,**

Assuring \$3,000 in case of Death, or \$15 per week Compensation during total disability (not exceeding six months for any one accident.)

**GENERAL ACCIDENT OF TRAVEL TICKETS, 20 cts. per day,**

Assuring \$5,000 in case of Death, or \$25 per week Compensation during total disability (not exceeding six months for any one accident.)

*Discount on Tickets for Twenty or Thirty Days.*

Sold at the Ticket Offices of the Grand Trunk and other leading Lines of Railway in the Canadas and United States.

Insurance commences at any Hour and extends any number of Days.

REMEMBER THAT TEN CENTS A DAY INSURES YOU FOR \$3,000.

Geo. B. WRIGHT, *Vice-President.*

C. D. PALMER, *General Agent.*

87

JUSTIN SNOW, *General Ticket Agent.*

# THE LIVERPOOL & LONDON AND GLOBE

## INSURANCE COMPANY.

CAPITAL, SURPLUS, and RESERVED FUNDS	-	\$16,271,675
INVESTED IN CANADA	- - - - -	250,000
<hr/>		
PREMIUMS RECEIVED IN 1866, were	- - - - -	\$5,362,260
DAILY PREMIUMS, UPWARDS OF	- - - - -	17,000

Shareholders personally responsible for engagements of the Company.  
All Directors must be Shareholders.

### HEAD OFFICES:

LIVERPOOL.

LONDON.

MONTREAL.

### CANADA BOARD OF DIRECTORS.

T. B. ANDERSON, Esq., Chairman, (President Bank of Montreal.)  
HENRY STARNES, Esq., Deputy Chairman, (Manager Ontario Bank.)  
E. H. KING, Esq., (General Manager Bank of Montreal.)  
HENRY CHAPMAN, Esq., Merchant.  
THOMAS CRAMP Esq., Merchant.

G. F. C. SMITH, *Resident Secretary.*

F. A. BALL, Hamilton, C. W. } *Inspectors.*  
JAMES SPIER, Montreal, }

**FIRE DEPARTMENT.**—Insurances effected on all classes of Property at Current Rates. Farm Risks at Specially Reduced Rates.

**LIFE DEPARTMENT.**—No Extra Charge for Military Service in Defence of the Country. Life Policies for the benefit of Wife or Children are secure from seizure by Creditors. Claims payable one month after proof of death.

All Bonuses, Stated and Guaranteed (a system peculiar to this Company). At age 50, by payment of \$26.00 yearly for 20 years only, a policy of \$1000 is secured, payable at death.

### "TABLES OF RATES"

adapted to the circumstances of all classes may be obtained at the Montreal Offices and of the Company's Agents generally throughout the Provinces.

Canada Business under the sole control of the Montreal Board.

AGENCIES established throughout Canada.

G. F. C. SMITH,  
Resident Secretary Canada Branch,  
Montreal.

10.7

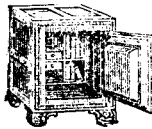
### IMPORTANT TO FARMERS.

**CANADIAN SUPER-PHOSPHATE.**—A Standard Manure for all Field and Garden Crops. It matures crops from ten to twenty days earlier, and greatly increases the yield.

Price \$50 per ton, in barrels of about 225 lbs. each.

It is also put up in \$1 packages for retail.

E. L. SNOW,  
*Manufacturer, Montreal.*

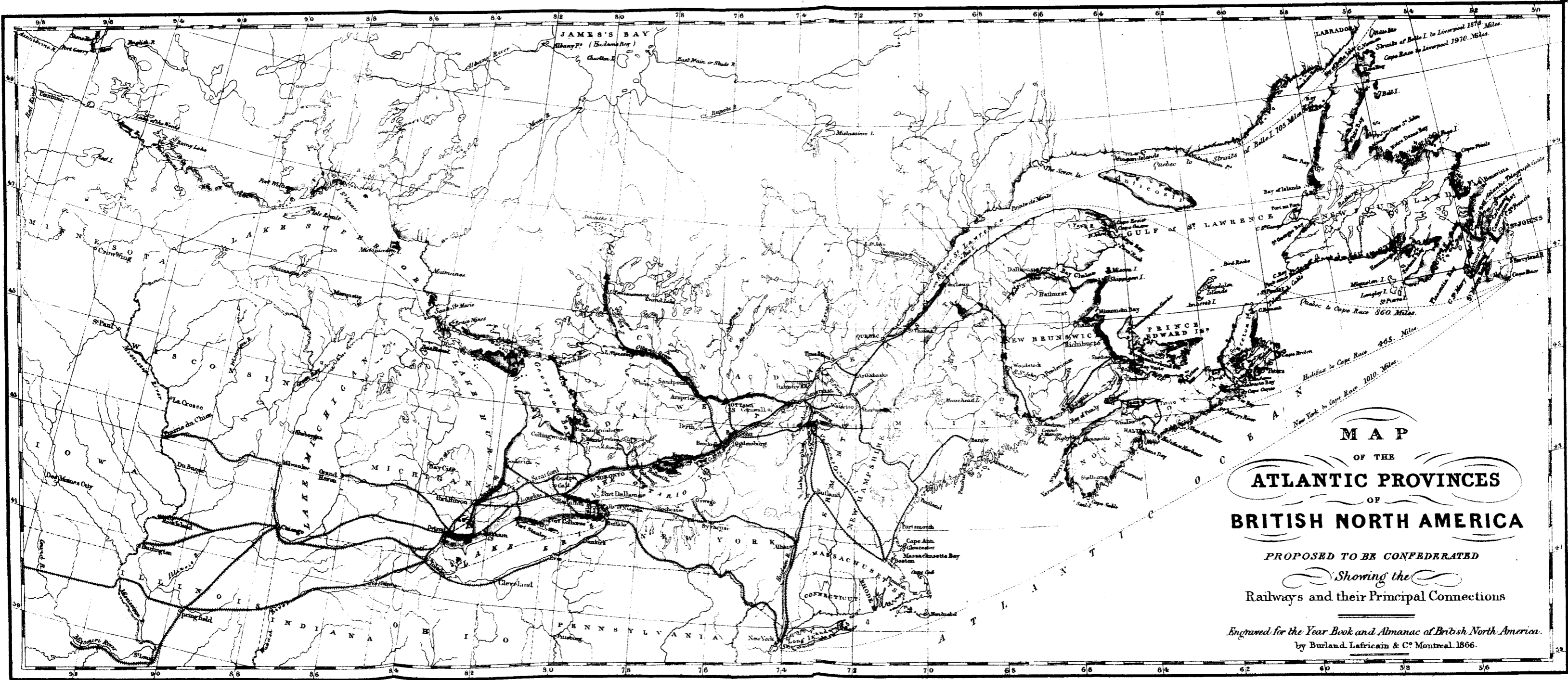


**KERSHAW**  
&  
**EDWARDS**

Manufacturers of  
**SALAMANDER SAFES,**  
Secured with Powder Proof Locks.  
Also, Combined Iron and Steel Specie Chests  
and Doors, Combination Bank Locks, &c.

Warerooms:  
82 and 84 St Francois Xavier Street,  
Montreal.

4.7



**MAP**  
 OF THE  
**ATLANTIC PROVINCES**  
 OF  
**BRITISH NORTH AMERICA**

*PROPOSED TO BE CONFEDERATED*  
*Showing the*  
**Railways and their Principal Connections**

*Engraved for the Year Book and Almanac of British North America.*  
 by Burland Lafricain & Co. Montreal. 1866.