

**CIHM
Microfiche
Series
(Monographs)**

**ICMH
Collection de
microfiches
(monographies)**



Canadian Institute for Historical Microreproductions / Institut canadien de microreproductions historiques

© 1997

Technical and Bibliographic Notes / Notes techniques et bibliographiques

The Institute has attempted to obtain the best original copy available for filming. Features of this copy which may be bibliographically unique, which may alter any of the images in the reproduction, or which may significantly change the usual method of filming are checked below.

- Coloured covers / Couverture de couleur
- Covers damaged / Couverture endommagée
- Covers restored and/or laminated / Couverture restaurée et/ou pelliculée
- Cover title missing / Le titre de couverture manque
- Coloured maps / Cartes géographiques en couleur
- Coloured ink (i.e. other than blue or black) / Encre de couleur (i.e. autre que bleue ou noire)
- Coloured plates and/or illustrations / Planches et/ou illustrations en couleur
- Bound with other material / Relié avec d'autres documents
- Only edition available / Seule édition disponible
- Tight binding may cause shadows or distortion along interior margin / La reliure serrée peut causer de l'ombre ou de la distorsion le long de la marge intérieure.
- Blank leaves added during restorations may appear within the text. Whenever possible, these have been omitted from filming / Il se peut que certaines pages blanches ajoutées lors d'une restauration apparaissent dans le texte, mais, lorsque cela était possible, ces pages n'ont pas été filmées.
- Additional comments / Commentaires supplémentaires:

L'Institut a microfilmé le meilleur exemplaire qu'il lui a été possible de se procurer. Les détails de cet exemplaire qui sont peut-être uniques du point de vue bibliographique, qui peuvent modifier une image reproduite, ou qui peuvent exiger une modification dans la méthode normale de filmage sont indiqués ci-dessous.

- Coloured pages / Pages de couleur
- Pages damaged / Pages endommagées
- Pages restored and/or laminated / Pages restaurées et/ou pelliculées
- Pages discoloured, stained or foxed / Pages décolorées, tachetées ou piquées
- Pages detached / Pages détachées
- Showthrough / Transparence
- Quality of print varies / Qualité inégale de l'impression
- Includes supplementary material / Comprend du matériel supplémentaire
- Pages wholly or partially obscured by errata slips, tissues, etc., have been refilmed to ensure the best possible image / Les pages totalement ou partiellement obscurcies par un feuillet d'errata, une pelure, etc., ont été filmées à nouveau de façon à obtenir la meilleure image possible.
- Opposing pages with varying colouration or discolourations are filmed twice to ensure the best possible image / Les pages s'opposant ayant des colorations variables ou des décolorations sont filmées deux fois afin d'obtenir la meilleure image possible.

This item is filmed at the reduction ratio checked below /
Ce document est filmé au taux de réduction indiqué ci-dessous.

10x	14x	18x	22x	26x	30x
<input type="checkbox"/>	<input type="checkbox"/>	<input checked="" type="checkbox"/>	<input type="checkbox"/>	<input type="checkbox"/>	<input type="checkbox"/>
12x	16x	20x	24x	28x	32x

The copy filmed here has been reproduced thanks to the generosity of:

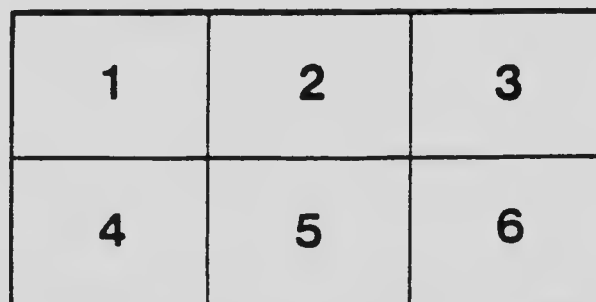
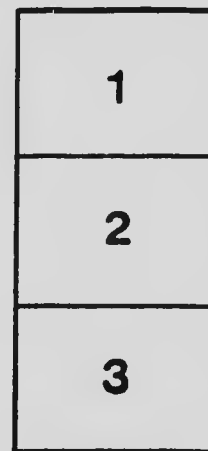
Department of Rare Books
and Special Collections,
McGill University, Montreal

The images appearing here are the best quality possible considering the condition and legibility of the original copy and in keeping with the filming contract specifications.

Original copies in printed paper covers are filmed beginning with the front cover and ending on the last page with a printed or illustrated impression, or the back cover when appropriate. All other original copies are filmed beginning on the first page with a printed or illustrated impression, and ending on the last page with a printed or illustrated impression.

The last recorded frame on each microfiche shall contain the symbol \rightarrow (meaning "CONTINUED"), or the symbol ∇ (meaning "END"), whichever applies.

Maps, plates, charts, etc., may be filmed at different reduction ratios. Those too large to be entirely included in one exposure are filmed beginning in the upper left hand corner, left to right and top to bottom, as many frames as required. The following diagrams illustrate the method:



L'exemplaire filmé fut reproduit grâce à la générosité de:

Department of Rare Books
and Special Collections,
McGill University, Montreal

Les images suivantes ont été reproduites avec le plus grand soin, compte tenu de la condition et de la netteté de l'exemplaire filmé, et en conformité avec les conditions du contrat de filmage.

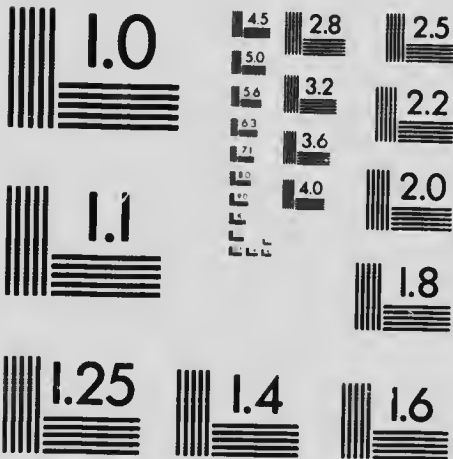
Les exemplaires originaux dont la couverture en papier est imprimée sont filmés en commençant par le premier plat et en terminant soit par la dernière page qui comporte une empreinte d'impression ou d'illustration, soit par le second plat, selon le cas. Tous les autres exemplaires originaux sont filmés en commençant par la première page qui comporte une empreinte d'impression ou d'illustration et en terminant par la dernière page qui comporte une telle empreinte.

Un des symboles suivants apparaîtra sur la dernière image de chaque microfiche, selon le cas: le symbole \rightarrow signifie "A SUIVRE", le symbole ∇ signifie "FIN".

Les cartes, planches, tableaux, etc., peuvent être filmés à des taux de réduction différents. Lorsque le document est trop grand pour être reproduit en un seul cliché, il est filmé à partir de l'angle supérieur gauche, de gauche à droite, et de haut en bas, en prenant le nombre d'images nécessaire. Les diagrammes suivants illustrent la méthode.

MICROCOPY RESOLUTION TEST CHART

(ANSI and ISO TEST CHART No. 2)



APPLIED IMAGE Inc

1653 East Main Street
Rochester, New York 14609 USA
(716) 482 - 0300 - Phone
(716) 288 - 5989 - Fax

**THE
CANADIAN HANDICRAFTS
GUILD**

(Incorporated by Dominion Act of Parliament, 1906)

□

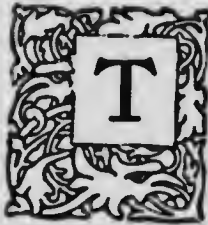
WHAT IT HAS DONE

□

**HEAD OFFICE : 598a ST. CATHERINE STREET WEST
MONTREAL**

1917





THE CANADIAN HANDICRAFTS GUILD is an incorporated association organized to encourage, retain, revive and develop handicrafts and home art industries throughout the Dominion, and to prevent the loss and deterioration of these crafts.

The following facts and figures will show in the briefest outline what has been accomplished up to Dec. 31st, 1917.

EXHIBITIONS and LECTURES. Many exhibitions have been sent out, some with lecturers, others without. Lectures have also been delivered independently.

PRIZE COMPETITIONS. Many hundreds of dollars have been offered at numerous Prize Competitions. Entries have been received from every Province in the Dominion.

JUDGES have been sent frequently to Exhibitions and County Fairs.

"OUR HANDICRAFTS SHOP" has been established for providing a market for handwork. The underlying idea is to place as much money as possible in the hands of the workers. The Shop, while paying its own way, is not compelled to pay dividends on invested capital, and to make as much profit for itself as possible (as must needs be done in ordinary commerce); it rather seeks to give the worker the best possible return for his hand labor. Since its opening, it has paid the workers no less than \$103,654.25,

apart from moneys awarded at the prize competitions. A very large proportion of this sum has gone into homes which hardly ever handle any actual money except that which comes from the Guild.

A short summary of the various years' activities will be of interest.

1905

Transfer of assets from the Montreal Branch of the Women's Art Association of Canada to the Canadian Handicrafts Guild (to be incorporated later).

EXHIBITION held in the Montreal Art Gallery—over \$1,000 placed in the hands of workers as a result.

EXHIBITION in the Royal Albert Hall, London, under the care of Lady Bruce.

EXHIBITION (and Address by Miss Robertson) in Atlantic City.

SUMMER EXHIBITION in Cacouna, under the auspices of Lady Allan and Lady Drummond.

SALES EXHIBIT in North Hatley, Que.

EDUCATIONAL EXHIBITS sent to Sherbrooke, Que.; Bowmanville, Collingwood, Goderich, London, Morrisburg, Ottawa, Prescott, Renfrew, Paris, Winchester, Ont.; Halifax, N.S.

PAYMENTS TO WORKERS, \$4,803.62

1906

INCORPORATION by Dominion Charter. Incorporators: Lord Strathcona and Mount Royal, Sir Melbourne M. Tait, Hon. Justice Sicotte, Sir Geo. Drummond, Sir William Hingston, Hon. L. O. Taillon, H. Beaugrand, Esq., C. A. Harwood, Esq., W. D. Lighthall, Esq., E. W. H. Phillips, Esq., Lady Tait, Mrs. Hy. Armstrong, Mrs. A. B. Chaffee, Mrs. W. D. Lighthall, Mrs. J. Dinham Molson, Miss M. Muir, Mrs. Jas. H. Peck, Miss M. M. Phillips, Miss J. M. Robertson, Mrs. Alex. Woods. First President, Miss M. M. Phillips.

EXHIBITION at Racquet Court, Ottawa.

JUDGE sent to Eastern Canada Exhibition, Sherbrooke.

EXHIBITS sent to Halifax, N.S.; St. John, N.B.; Huntingdon, St. Louis de Gonzague, St. Hyacinthe, Metis, North Hatley, Que.; Brantford, Chatham, Goderich, Gananoque, Prescott, Renfrew, Niagara Falls, St. Catharines, Winchester, Ont.

LECTURES. Five Lectures under the auspices of the Natural History Society on "Furnishing and Decorating as applied to the House."

PAYMENTS TO WORKERS, \$4,802.33.

1907

AUSTRALIA. Exhibit sent to Melbourne, Australia, at the request of the Countess Grey.

DUBLIN. Exhibit sent to Dublin, under the auspices of the Dominion Government, in charge of Miss Steen.

EXHIBITIONS in Montreal (Art Gallery); Toronto (Society of Applied Arts); Boston (Arts and Crafts); Sherbrooke, Ottawa, North Hatley, Lachute.

LABRADOR. Co-operation with Dr. Grenfell—Wool sent to Labrador to assist in developing weaving industry.

PAYMENTS TO WORKERS, \$4,274.60.

1908

LONDON. Exhibit sent to Franco-British Exhibition, London, under auspices of Dominion Government, in charge of Miss Steen.

QUEBEC. Exhibit sent to Quebec on the occasion of the Tercentennial Celebrations.

AGENCY opened in Hamilton, Ont.

EXHIBIT sent to Chester, N.S.

PAYMENTS TO WORKERS, \$3,598.81.

1909

HOMESPUNS. Good sales of homespuns in England—a direct result of the exhibit sent last year to the Franco-British Exhibition.

LABRADOR. Excellent samples of weaving received from St. Anthony, Labrador, made from wool spun there in 1907. Samples of weaving, designs and instructions, and recipes for dyes sent to the Deep Sea Medical Mission, Harrington Harbour, Labrador.

LONDON. Exhibit sent to the Imperial Exhibit at the White City, London, Eng., at the request of Lady Northcliffe.

AGENCIES opened in Winnipeg and Edmonton.

SALES EXHIBITS sent to Boston (Arts and Crafts), Woodstock Inn, Vermont, North Hatley, Que.

LIBRARY. Library started.

MUSEUM. Nucleus formed for a Museum.

PRIZE COMPETITION and Sale of Work; over \$1,000.00 distributed to workers.

ART GALLERY. Entertainment in Art Gallery to Countess of Aberdeen and delegates of the International Council of Women.

PAYMENTS TO WORKERS, \$6,887.75.

1910

JUDGES sent to Eastern Canada Exhibition, Sherbrooke, County Fairs at Ayer's Cliff, Granby, l'Avenir, l'Assomption, Scotstown.

EXHIBITS sent to Toronto National Exhibition, Victoria, B.C., North Hatley, Que., Summerside, P.E.I.

WEAVING. Engagement of expert weaver from Canterbury, Eng., and installation of loom in "Our Handicrafts Shop."

VANCOUVER. Six weeks' trip to Vancouver by Miss Phillips, with the object of looking into handicraft conditions and prospects. Fourteen places visited, including Vancouver, Victoria, Sechelt Indian Reserve, Lytton, Edmonton, Winnipeg, Kenora, North Bay.

LIBRARY. Additions made to Library.

PAYMENTS TO WORKERS, \$4,149.28.

1911

MARITIME PROVINCES. Trip to Prince Edward Island Seed Fair by Miss Campbell, with exhibit, lecture and 50 lantern slides, and subsequent formation of Summerside Branch. Lectures delivered by Miss Campbell in Halifax, Pictou, N.S., St. John, Moncton, N.B.

EDMONTON. Organization of Edmonton Branch, as outcome of Miss Phillips' visit last year.

WINNIPEG. Exhibit taken to Western Canada Exhibition, Winnipeg, by Mrs. Bottomley, and visit paid to the Doukhobor settlement at Verigin.

OTTAWA. Opening of temporary quarters in Ottawa by Mrs. Bottomley.

CORONATION GIFT. Twenty articles, showing various crafts, sent to Queen Mary as a Coronation Gift.

LONDON. Exhibit sent to the "Festival of the Empire," at the Crystal Palace, London, in charge of Miss Steen.

EXHIBITS sent to Ottawa, Toronto, North Bay, Ont., Winnipeg, Man., Edmonton, Alta., Vancouver, B.C., Quebec, Que., St. John, Moncton, N.B., Halifax, Pictou, N.S., Summerside, P.E.I.

SUMMER AGENCIES in Chester and Yarmouth, N.S., Quebec and North Hatley, Que., Cobourg and Gananoque, Ont., Vancouver and Victoria, B.C.

JUDGES sent to Ayer's Cliff, L'Avenir and Scotstown, Que.

PAYMENTS TO WORKERS, \$4,161.84.

1912

OTTAWA. Opening of Branch in Ottawa and Agency in Chateau Laurier. Representative from Ottawa Branch took exhibit to International Congress of Farm Women, Lethbridge, Alta.

VANCOUVER. Trip to West and Vancouver by Miss Steen, 7½ weeks.
Places visited: Vancouver, Victoria, Sechelt, Lytton, Glacier,
Edmonton, Mundare (Ruthenians). Organization of Branch in
Vancouver.

CALGARY. Exhibit sent to Calgary by Edmonton Branch.

INDIAN RESERVES. Visit by Mrs. Paget to Indian Reserves in
Saskatchewan.

JUDGES sent to County Fairs at Ayer's Cliff, l'Avenir, Lachute,
Scotstown, Waterloo, Que.

EXHIBITION for two weeks at Holt and Renfrew's.

MACDONALD COLLEGE. Exhibit and lecture at Macdonald College,
Que.

CHILDREN'S WELFARE EXHIBITION. Participation in Children's
Welfare Exhibition, Montreal, by showing Model Rooms.

EXHIBITS sent to Rochester, N.Y., Halifax, Digby, Chester, Yarmouth'
N.S., Glacier and Vancouver, B.C., Calgary and Lethbridge'
Alta., Ottawa, Coburg, Hamilton, Ont., North Hatley, Que.

PAYMENTS TO WORKERS, \$7,610.39.

1913

WINNIPEG. Formation of Branch in Winnipeg, under a sub-committee of the Western Art Association.

VANCOUVER. Second visit of Miss Steen to Vancouver, to assist in the installation of handicraft exhibit in the Vancouver Exhibition.

ARENA. "Our Handicraft Fair," for two weeks at the Arena.

EXHIBITION for two weeks at Holt and Renfrew's.

EXHIBIT sent to McGill Union, in connection with general meeting of Women's Council.

TORONTO. Exhibit sent at time of the Geological Congress.

EXHIBITS sent to Edmonton, Winnipeg, Halifax, Digby, Yarmouth, Moncton, Cobourg, North Hatley.

JUDGES sent to Ottawa, Ayer's Cliff, L'Avenir, Huntingdon.

PAYMENTS TO WORKERS, \$8,156.78.

1914

EXHIBITS sent to Winnipeg, Man., St. Andrews, N.B., Summerside, P.E.I., North Hatley, Que.

JUDGES sent to Huntingdon, Lacolle, l'Avenir, Que.

SALES EXHIBIT at 155 Peel St. in connection with Prize Competition.

EXHIBIT for two weeks at Holt and Renfrew's.

PAYMENT TO WORKERS, \$5,365.14.

1915

TOY INDUSTRY. Organization of hand-made toy industry; prize competition to promote originality.

FOURTH Sales Exhibit at Holt and Renfrew's.

ARENA. Participation in "Made in Canada" Exhibition at the Arena.

EXHIBITS sent to Vancouver, Edmonton, Winnipeg, Boston, Chicago, Bermuda, Buzzard's Bay, Summerside, Hamilton, Digby, Yarmouth, St. Andrews, Fredericton, North Hatley.

PAYMENTS TO WORKERS, \$6,714.18.

1916

DOMINION WOOL EXHIBIT. Exhibit of handicrafts sent at request of Dominion Government to accompany its Wool Exhibit on Dominion-wide tour. Places visited: Calgary, Brandon, Regina, Edmonton, Lethbridge, Medicine Hat, Toronto, Sherbrooke, Quebec, St. John, Halifax, Chatham, Charlottetown.

JUDGES sent to Sherbrooke, Ayer's Cliff, Huntingdon.

CIRCULAR issued in French and English for general distribution, explaining the objects and aims of the Guild.

DYE BOOK. Translation into French and publication of the book on home dyeing, issued by the Prince County, P.E.I. Branch.

CHARLOTTETOWN, P.E.I. Formation of Branch at Charlottetown.

SALES EXHIBITS sent to Chicago, Bermuda, Buzzard's Bay, Summerside, Lake Placid. North Hatley, Digby, Yarmouth, St. Andrews

AGENCIES. Opening of agencies in New York and Chicago.

TOYS. Second Prize Competition.

REMOVAL to ground floor premises.

PAYMENTS TO WORKERS, \$15,554.31.

1917

JUDGES sent to Sherbrooke and Ayer's Cliff, Que., Alexandria and Williamstown, Ont.

EXHIBITS and lectures at Social Service Congress, Montreal; at Cookshire, Cowansville, Sawyerville.

DRAWING ROOM meeting at Mrs. Hebden's, with talk on handicrafts by Miss Phillips.

PRIZES offered Y.W.C.A. for basketry and weaving.

PUBLICATION of articles on handicrafts in Agricultural Journal.

RETURNED SOLDIERS. Work among returned convalescent soldiers—basketry, weaving, carving, embroidery.

U.S. AGENCIES. Opening of new agencies in Detroit, Mich., Philadelphia, Pa. and St. Augustine, Florida.

EXHIBITS sent to North Hatley, Digby, Yarmouth, Lake Placid, St. Andrews, Glengarry, Alexandria, Maxville, Williamstown, Charlottetown, Summerside.

PAYMENTS TO WORKERS, \$27,038.39.

PRIZE COMPETITIONS. In addition, there has been an annual Prize Competition (with the exception of one year) on which occasions hundreds of entries have been received from all parts of Canada, from P.E.I. to B.C. No entrance fees of any kind have been charged. The sole idea has been to encourage good hand work of all kinds.



TRADE MARK
CANHANCRA

