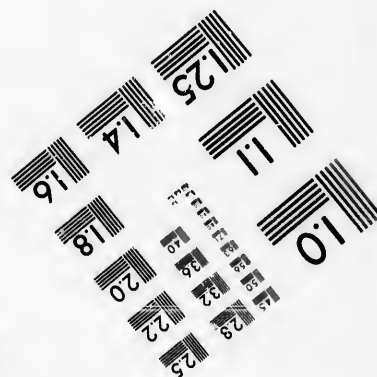
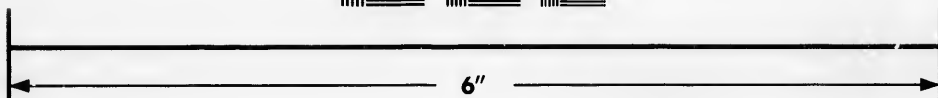
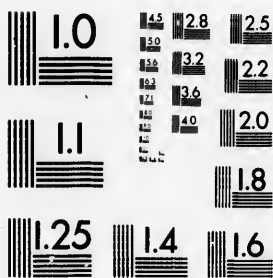


**IMAGE EVALUATION  
TEST TARGET (MT-3)**



**Photographic  
Sciences  
Corporation**

23 WEST MAIN STREET  
WEBSTER, N.Y. 14580  
(716) 872-4503

**CIHM/ICMH  
Microfiche  
Series.**

**CIHM/ICMH  
Collection de  
microfiches.**



Canadian Institute for Historical Microreproductions / Institut canadien de microreproductions historiques

**© 1986**

Technical and Bibliographic Notes/Notes techniques et bibliographiques

The Institute has attempted to obtain the best original copy available for filming. Features of this copy which may be bibliographically unique, which may alter any of the images in the reproduction, or which may significantly change the usual method of filming, are checked below.

L'institut a microfilmé le meilleur exemplaire qu'il lui a été possible de se procurer. Les détails de cet exemplaire qui sont peut-être uniques du point de vue bibliographique, qui peuvent modifier une image reproduite, ou qui peuvent exiger une modification dans la méthode normale de filmage sont indiqués ci-dessous.

- |  |  |
|--|--|
| <input checked="" type="checkbox"/> Coloured covers/<br>Couverture de couleur  | <input type="checkbox"/> Coloured pages/<br>Pages de couleur   |
| <input checked="" type="checkbox"/> Covers damaged/<br>Couverture endommagée   | <input type="checkbox"/> Pages damaged/<br>Pages endommagées   |
| <input type="checkbox"/> Covers restored and/or laminated/<br>Couverture restaurée et/ou pelliculée  | <input type="checkbox"/> Pages restored and/or laminated/<br>Pages restaurées et/ou pelliculées  |
| <input type="checkbox"/> Cover title missing/<br>Le titre de couverture manque   | <input checked="" type="checkbox"/> Pages discoloured, stained or foxed/<br>Pages décolorées, tachetées ou piquées   |
| <input type="checkbox"/> Coloured maps/<br>Cartes géographiques en couleur   | <input type="checkbox"/> Pages detached/<br>Pages détachées  |
| <input type="checkbox"/> Coloured ink (i.e. other than blue or black)/<br>Encre de couleur (i.e. autre que bleue ou noire)   | <input checked="" type="checkbox"/> Showthrough/<br>Transparence   |
| <input type="checkbox"/> Coloured plates and/or illustrations/<br>Planches et/ou illustrations en couleur  | <input type="checkbox"/> Quality of print varies/<br>Qualité inégale de l'impression   |
| <input type="checkbox"/> Bound with other material/<br>Relié avec d'autres documents   | <input type="checkbox"/> Includes supplementary material/<br>Comprend du matériel supplémentaire   |
| <input type="checkbox"/> Tight binding may cause shadows or distortion<br>along interior margin/<br>La reliure serrée peut causer de l'ombre ou de la<br>distorsion le long de la marge intérieure   | <input type="checkbox"/> Only edition available/<br>Seule édition disponible   |
| <input type="checkbox"/> Blank leaves added during restoration may<br>appear within the text. Whenever possible, these<br>have been omitted from filming/<br>Il se peut que certaines pages blanches ajoutées<br>lors d'une restauration apparaissent dans le texte,<br>mais, lorsque cela était possible, ces pages n'ont<br>pas été filmées. | <input type="checkbox"/> Pages wholly or partially obscured by errata<br>slips, tissues, etc., have been refilmed to<br>ensure the best possible image/<br>Les pages totalement ou partiellement<br>obscurcies par un feuillet d'errata, une pelure,<br>etc., ont été filmées à nouveau de façon à<br>obtenir la meilleure image possible. |
| <input type="checkbox"/> Additional comments:<br>Commentaires supplémentaires:   |  |

This item is filmed at the reduction ratio checked below/  
Ce document est filmé au taux de réduction indiqué ci-dessous.

10X	12X	14X	16X	18X	20X	22X	24X	26X	28X	30X	32X
				/							

The copy filmed here has been reproduced thanks to the generosity of:

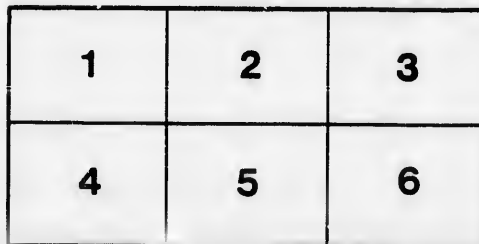
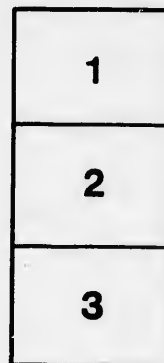
McLennan Library  
McGill University  
Montreal

The images appearing here are the best quality possible considering the condition and legibility of the original copy and in keeping with the filming contract specifications.

Original copies in printed paper covers are filmed beginning with the front cover and ending on the last page with a printed or illustrated impression, or the back cover when appropriate. All other original copies are filmed beginning on the first page with a printed or illustrated impression, and ending on the last page with a printed or illustrated impression.

The last recorded frame on each microfiche sheet contain the symbol  $\rightarrow$  (meaning "CONTINUED"), or the symbol  $\nabla$  (meaning "END"), whichever applies.

Maps, plates, charts, etc., may be filmed at different reduction ratios. Those too large to be entirely included in one exposure are filmed beginning in the upper left hand corner, left to right and top to bottom, as many frames as required. The following diagrams illustrate the method:



L'exemplaire filmé fut reproduit grâce à la générosité de:

McLennan Library  
McGill University  
Montreal

Les images suivantes ont été reproduites avec le plus grand soin, compte tenu de la condition et de la netteté de l'exemplaire filmé, et en conformité avec les conditions du contrat de filmage.

Les exemplaires originaux dont la couverture en papier est imprimée sont filmés en commençant par le premier plat et en terminent soit par la dernière page qui comporte une empreinte d'impression ou d'illustration, soit par le second plat, selon le cas. Tous les autres exemplaires originaux sont filmés en commençant par la première page qui comporte une empreinte d'impression ou d'illustration et en terminent par la dernière page qui comporte une telle empreinte.

Un des symboles suivants apparaîtra sur la dernière image de chaque microfiche, selon le cas: le symbole  $\rightarrow$  signifie "A SUIVRE", le symbole  $\nabla$  signifie "FIN".

Les cartes, planches, tableaux, etc., peuvent être filmés à des taux de réduction différents. Lorsque le document est trop grand pour être reproduit en un seul cliché, il est filmé à partir de l'angle supérieur gauche, de gauche à droite, et de haut en bas, en prenant le nombre d'images nécessaire. Les diagrammes suivants illustrent la méthode.

EX

I

**T**

in e

Cou

tena

lative

the

two

Jud

and

that

mit

Bui

Go

men

del

be

*EXTRACT from the Journals of the Legislative Council in the years 1819, 1820, 1821 & 1822 :*

**IT IS ORDERED,**

**T**HAT on Mondays, Wednesdays and Fridays in every week, the Library of the Legislative Council be open to the Governor and the Lieutenant Governor, to the Members of the Legislative Council, of the Executive Council and of the House of Assembly and the Officers of the two Houses for the time being, to His Majesty's Judges, to the Clerk of the Executive Council, and to the Law Officers of the Crown. And that no person having such access shall be permitted to carry any Book or Books out of the Building, except the Governor, Lieutenant Governor, or Person administering the Government ; and that for all Books which shall be delivered to His Excellency, a Receipt shall be given.



**EN**

**AC**  
**Aik**  
**Ain**

**Anr**

**CATALOGUE**  
 OF  
**ENGLISH BOOKS IN THE LIBRARY**  
 OF THE  
**LEGISLATIVE COUNCIL.**

*Quebec, 20th December, 1821.*

---

	<i>Vols.</i>	<i>Where deposited.</i>
ACTS of Parliament,	31	Speaker's room.
Aikin's Annals of Geo. III.	2	Library.
Ainsworth's Latin and English Dictionary,	1	do.
Annual Register,	61	do.



( 2 )

BAC  
Barn  
Beck  
Bigla  
Blac  
Bou

Brou  
Burk  
Burn  
Burn  
Burn

	<i>Vols.</i>	<i>Where deposited.</i>
BACON's Abridgment,	7	Speaker's room.
Barnewall and Alderson's Reports,	3	Library.
Beckmann on Inventions,	4	Speaker's room.
Bigland on Nations,	1	do.
Blackstone's Commentaries,	4	Library.
Bouchette's Topographical History of Canada,	1	do.
Brougham's Colonial Policy,	2	do.
Burke's Works,	12	Speaker's room.
Burnet, History of his own times,	4	Library.
Burn's Justice,	5	do.
Burrow's Reports,	5	do.

CAM  
Chal

Chal

Cobb

Coll

Colo  
Colo

Com  
Com

Crai

	<i>Vols.</i>	<i>Where deposited.</i>
CAMPBELL's Reports,	4	Speaker's room.
Chalmers's Opinions,	2	do.
----- Political Annals (2 copies)	2	do.
Chambrud's French and English Dictionaries, (2 copies)	4	do.
Cobbett's Parliamentary Debates,	38	do.
----- History,	36	do.
----- Ditto,	34	Speaker's room.
Collection of the Parliamentary Debates in England, from 1668 to 1744,	24	Library.
Colonial Policy of Great-Britain,	1	do.
Colquhoun on Wealth,	1	do.
----- on the Police of London	1	do.
----- on Indigence,	1	do.
----- on Parochial Education,	1	do.
Conversations on Political Economy,	1	do.
Constitution of the United-States of America,	1	do.
Craig's Political Science,	3	do.

( 6 )

D  
D  
—  
—  
D  
D

	<i>Vols.</i>	<i>Where deposited.</i>
DAVY's Agricultural Chemistry,	1	Speaker's room.
Debates of the House of Lords,	8	Library.
—— of Ditto Ditto,	8	Speaker's room.
—— of the House of Commons,	14	Library.
—— of Ditto Ditto,	14	Speaker's room.
Dewes's Journal of Parliament,	1	Library.
Durnford and East's Reports,	8	do.

( 8 )

EAS  
Edu

Ellie  
Elsy  
Eva  
Ext

	<i>Vols.</i>	<i>Where deposited.</i>
<b>EAST's Reports,</b>	16	Library.
<b>Edinburgh Review,</b>	2	Speaker's room.
<b>----- Magazine,</b>	8	do.
<b>Ellis's Precedents,</b>	1	Library.
<b>Elsynge's Parliament,</b>	1	do.
<b>Evan's Parliamentary Reports,</b>	2	do.
<b>Extract from the Journals of the Legislative Council of Low- er-Canada,</b>	1	do.



( 10 )

FA  
Fos

( 11 )

FACULTY Decisions,  
Foster's Crown Law,

<i>Vols.</i>	<i>Where deposited.</i>
19	Speaker's room.
1	Library.

( 12 )

G  
G  
G  
|

	<i>Vols.</i>	<i>Where deposited.</i>
GORDON's History of Ireland,	2	Speaker's room.
Gregory's Dictionary,	2	do.
Grey's Debates,	10	do.
—— Ditto, <i>same edition,</i>	10	Library.

( 14 )

HA

---

Ha  
Ha  
Ha

Ha  
Hi  
Hi

---

---

Ho  
Ho  
Hu  
Hu

	<i>Vols.</i>	<i>Where deposited:</i>
HALE's Works,	2	Speaker's room.
----- Jurisdiction of the House of Lords,	1	Library.
----- Powers of Parliament,	1	do.
Hatsell's Precedents, <i>new Edition</i> ,	2	do.
Hatsell's Ditto	4	do.
Hansard's Parliamentary Debates, following Cobbett's Parlia- mentary History & Debates	6	Speaker's room.
Harris's Lives of James I. &c. &c.	5	do.
Highmore on Excise,	2	Library.
History of Colleges and Free- Schools, in England, <i>with</i> <i>Plates</i> ,	1	do.
----- of Great-Britain, <i>Belsham</i> ,	5	do.
----- of Ditto, <i>Henry</i> ,	12	do.
----- of Ditto, <i>Rapin</i> ,	21	do.
Holy Bible,	1	do.
Howell's State Trials,	29	do.
Hume's Essays	2	do.
Hutchinson's Justice.	4	do.

( 16 )

Ja  
Ji  
Jo  
Iri  
Jo  
Jo  
Jo  
Jo  
Jo  
Jo

	<i>Vols.</i>	<i>Where deposited.</i>
JACOB's Law Dictionary,	2	Library.
Jickling's Laws of Customs,	2	do.
Johnson's Dictionary, (2 copies)	8	do.
Irish Statutes to 1800, with Index, &c.	21	do.
Journals of House of Lords to 1817, with Index, &c.	52	do.
Journals of House of Lords to 1767	31	Speaker's room.
Journals of House of Commons to 1820, Index, &c.	79	do.
Journals of House of Lords of Ire- land,	8	do.
Journals of Legislative Council, English and French,	11	do.
Journals of House of Assembly, English and French,	22	do.



( 18 )

LA

Le

---

Lo

Lo

	<i>Vols.</i>	<i>Where deposited.</i>
<b>LAWS</b> of Lower Canada, English and French, and Index,	9	Library.
<b>Lex Mercatoria,</b>	2	do.
— <b>Parliamentaria,</b>	1	do.
— <b>Constitutionis,</b>	1	do.
<b>Locke on Government,</b>	1	do.
<b>Lords' Protests,</b>	2	do.

( 20 )

	<i>Vols.</i>	<i>Where deposited.</i>
MURRAY's Report of Trials by Jury, in Scotland,	1	Speaker's room.
Mathus on Population,	3	Library.
Maule and Selwin's Reports,	4	do.
Millar on English Government,	4	Speaker's room.
Montmorris's Irish Parliament,	2	Library.

PA

---

Pa

Pa

---

Pin

---

Pla

Por

Pov

Pri

	<i>Vols.</i>	<i>Where deposited.</i>
PARLIAMENTARY Register, following "Collection of Parliamentary De- bates, &c."	17	Speaker's room.
_____ Rolls,	6	Library.
_____ Do.	6	Speaker's room.
Parliamentary or Constitutional History of England,	24	Library.
Parliamentary Debates, <i>Stock- dale's Edition,</i>	121	do.
_____ Debates follow- ing <i>Chandler's Edition,</i>	7	Speaker's room.
Pinkerton's Modern Geography,	2	do.
_____ Atlas,	1	Library.
Playfair's Statistical Tables,	1	do.
Pope's Customs,	1	do.
Pownal's Administration of Bri- tish Colonies,	1	Speaker's room.
Privileges of House of Lords,	1	Library.

( 24 )

QU

( 25 )

QUARTERLY Review,

*Vols* | *Where deposited.*  
3 | Speaker's room.



RA  
Rep

Rem

Rep

Ric

Rob

Rul

Rus

	<i>Vols</i>	<i>Where deposited</i>
RAYMOND's Reports,	3	Library.
Repertory of Arts, 1st. Series,	18	do.
——— of do. 2d. do.	38	do.
Remembrances of Standing Orders of House of Lords,	1	do.
Reports of House of Commons, (Complete)	16	Speaker's room.
——— of Ditto, 2 copies not Complete,	8	do.
——— on Education,	2	Library.
——— on Ditto,	1	do.
Ricardo's on Economy,	1	do.
———'s Tracts,	1	do.
Robertson's History of America,	4	Speaker's room.
Rules of the House of Assembly,	1	Library.
Rushworth's Collections,	8	do.

SAU  
Seld

Show  
Statu

Stew

Stok

	<i>Vols.</i>	<i>Where deposited.</i>
<b>SAUNDERS's Reports,</b>	3	Library.
<b>Selden's of the Judicature of Par-</b>		
<b>liament,</b>	1	do.
<b>Shower's Reports,</b>	2	do.
<b>Statutes at large, to 26th Geo. III.</b>	14	Speaker's room.
————— to 59th Geo. III.	21	Library.
<b>Stewart's Political Economy,</b>	6	do.
———— on Mind,	2	do.
———— Essays,	1	do.
———— Life of Smith,	1	do.
<b>Stoke's British Colonies,</b>	1	do.

( 30 )

TH  
Trac

	<i>Vols.</i>	<i>Where deposited.</i>
<b>THORTON</b> on Paper Credit,	1	Library.
<b>Tracts</b> on Savings Banks,	1	do.

( 32 )

VAT

( 33 )

VATTEL's Law of Nations,	<i>Vols.</i>	<i>Where deposited.</i>
	1	Library.



( 34 )

	<i>Vols.</i>	<i>Where deposited.</i>
WILLIAMS's Digest,	2	Library.
Wilson's Reports,	3	do.
Whitelocke on the King's Writs,	2	do.
Woodeson on the Laws of England,	3	do.

( 36 )

**NEWSPAPERS.**

1. National Intelligencer,
2. New-York Spectator,
3. Quebec Gazette,
4. Quebec Mercury,
5. Montreal Herald,
6. Canadian Courant.

( 38 )

( 39 )

GLOBES,

Celestial and Terrestrial.

MAPS,

Of the South America,

Of Lower-Canada, by Bouchette,

General of Lower and Upper-Canada, by do.

EX

G  
de  
Lé  
Li  
se  
Cl  
Cl  
Sa  
au  
pe  
pe  
ce  
no  
d  
p  
l

*EXTRAIT des Journaux du Conseil Législatif pour les Années 1819, 1820, 1821 & 1822 :*

IL EST ORDONNÉ,

**Q**UE tous les Lundi, Mercredi et Vendredi de chaque Semaine, la Bibliothèque du Conseil Législatif soit ouverte au Gouverneur et au Lieutenant-Gouverneur, aux Membres du Conseil Législatif, du Conseil Exécutif et de la Chambre d'Assemblée, et aux Officiers des deux Chambres, pour le tems d'alors, aux Juges de Sa Majesté, au Greffier du Conseil Exécutif et aux Avocats de la Couronne. Et qu'il ne sera permis à aucune personne qui y aura accès, d'emporter aucun Livre hors de la Bâtisse, à l'exception du Gouverneur, du Lieutenant-Gouverneur, ou de la Personne ayant l'Administration du Gouvernement ; et qu'il sera donné un Reçu pour tout Livre qui sera délivré à Son Excellence.



*Des*

APP  
I

# CATALOGUE

*Des Livres François dans la Bibliothèque*

DU

CONSEIL LEGISLATIF.

*Québec, 20e. Décembre, 1821.*



	Vols.	En quelle Chambre.
APPERCU des Etats-Unis, par Beaujour,	1	Cham. Orateur.

( 42 )

BIC

( 43 )

BIOGRAPHIE des Pairs et des Députés de France,	Vols.	En quelle Chambre.
	2	Cham. Orateur.

CODE

Collec

n

Consti

lo

Contu

Coutu

Crime

P

	Vols.	En quelle Chambre.
CODE de Procédure Civile,	1	Bibliothèque.
—— de Napoléon,	1	do.
Collection de Décisions, par Dé- nisart,	13	Cham. Orateur.
Constitution d'Angleterre, par De- lolme,	2	Bibliothèque.
Coutume de Paris,	1	do.
Coutume do. 8 <sup>o</sup> <i>petit format</i> ,	2	do.
Crimes des Reines de France, par Prudhomme,	1	do.

DICTION

\_\_\_\_\_  
\_\_\_\_\_  
\_\_\_\_\_  
\_\_\_\_\_  
\_\_\_\_\_

Droit de  
— de

Vols. En quelle Chambre.

DICTIONNAIRE de Droit, par Ferrière,	2	Bibliothèque.
— des Condamnés à mort, par Prudhomme,	5	do.
— de l'Industrie,	6	do.
— de Trévoux,	8	do.
— de l'Académie,	2	do.
— Grammaticque,	2	do.
— de Furetière,	3	do.
Droit de Colonies, par Petit,	2	do.
— de la Guerre, par Grotius,	2	do.



( 48 )

EDITS  
Esprit  
—do

	Vols.	En quelle Chambre.
EDITS et Ordonnances,	2	Bibliothèque,
Esprit des Loix, par Montesquieu,	4	do.
—do. par do. <i>nouvelle edition</i> ,	4	Cham. Orateur.

( 50 )

L'AM  
L'Eur  
h

( 51 )

	Vols.	En quelle Chambre.
L'AMI des Hommes,	7	Bibliothèque.
L'Europe tourmentée, par Prud- homme,	2	do.

( 52 )

MAN  
Miro

	Vols.	En quelle Chambre.
MANUEL du Droit François,	1	Bibliothèque.
Miroir de Paris, par Prudhomme,	6	do.

( 54 )

CEU

( 55 )

	Vols.	En quelle Chambre
ŒUVRES d'Agnesseau,	13	Bibliothèque.
———— de Mably,	15	do.
———— de Pothier,	28	do.



( 99 )

PAN  
Pigea

( 57 )

PANDECTES Françaises,  
Pigeau, Procédures Civiles,

Vols.	En quelle Chambre.
22	Bibliothèque.
2	Cham. Orateur.

( 58 )

REPE  
d  
Révol  
h  
Riche  
Riche

	Vols.	En quelle Chambre
REPertoire de Jurisprudence,	17	Cham. Orateur.
Révolution de Paris, par Prudhomme,	17	Bibliothèque.
Richesses des Nations, par Smith,	5	do.
Richesses Commerciales	2	do.

( 60 )

TOPC  
pa  
Traité

---

---

	Vols.	En quelle Chambre.
TOPOGRAPHIE du Canada, par Bouchette,	1	Bibliothèque.
Traité d'Economie Politique, par Say,	2	do.
— do. do. par Sturch,	6	Cham. Orateur.
— de la Police, par Delamare,	4	Bibliothèque.

( 62 )

( 63 )

GLOBES,  
Céleste et Terrestre.

CARTES,

De l'Amérique du Sud,  
Du Bas-Canada, par Bouchette,  
Générale du Bas & du Haut-Canada, par do.



( 64 )



