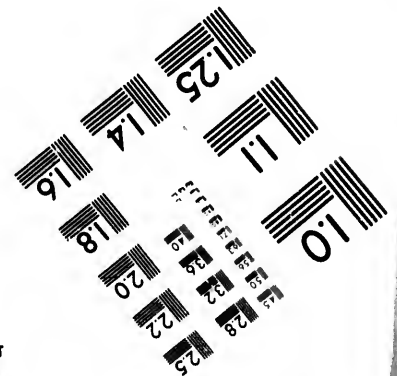
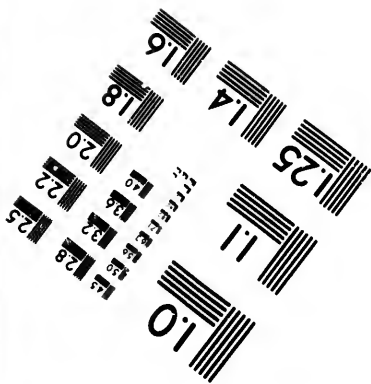
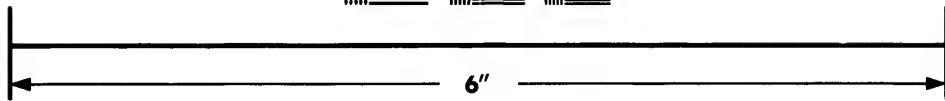
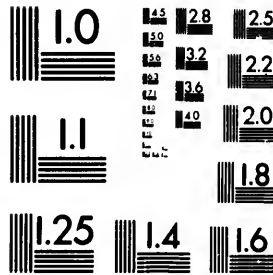


**IMAGE EVALUATION
TEST TARGET (MT-3)**



**Photographic
Sciences
Corporation**

23 WEST MAIN STREET
WEBSTER, N.Y. 14580
(716) 872-4503

15 18 22 25
19 20 22 25
18

**CIHM/ICMH
Microfiche
Series.**

**CIHM/ICMH
Collection de
microfiches.**



Canadian Institute for Historical Microreproductions / Institut canadien de microreproductions historiques

© 1985

11
01

The copy filmed here has been reproduced thanks to the generosity of:

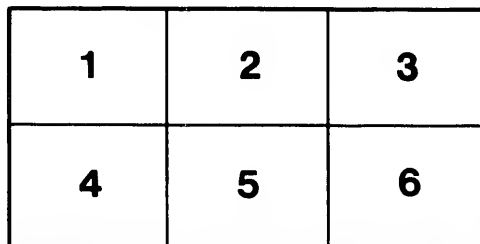
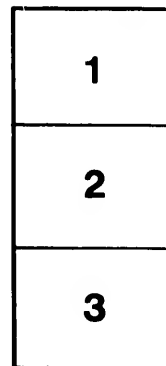
Douglas Library
Queen's University

The images appearing here are the best quality possible considering the condition and legibility of the original copy and in keeping with the filming contract specifications.

Original copies in printed paper covers are filmed beginning with the front cover and ending on the last page with a printed or illustrated impression, or the back cover when appropriate. All other original copies are filmed beginning on the first page with a printed or illustrated impression, and ending on the last page with a printed or illustrated impression.

The last recorded frame on each microfiche shall contain the symbol \rightarrow (meaning "CONTINUED"), or the symbol ∇ (meaning "END"), whichever applies.

Maps, plates, charts, etc., may be filmed at different reduction ratios. Those too large to be entirely included in one exposure are filmed beginning in the upper left hand corner, left to right and top to bottom, as many frames as required. The following diagrams illustrate the method:



L'exemplaire filmé fut reproduit grâce à la générosité de:

Douglas Library
Queen's University

Les images suivantes ont été reproduites avec le plus grand soin, compte tenu de la condition et de la netteté de l'exemplaire filmé, et en conformité avec les conditions du contrat de filmage.

Les exemplaires originaux dont la couverture en papier est imprimée sont filmés en commençant par le premier plat et en terminant soit par la dernière page qui comporte une empreinte d'impression ou d'illustration, soit par le second plat, selon le cas. Tous les autres exemplaires originaux sont filmés en commençant par la première page qui comporte une empreinte d'impression ou d'illustration et en terminant par la dernière page qui comporte une telle empreinte.

Un des symboles suivants apparaîtra sur la dernière image de chaque microfiche, selon le cas: le symbole \rightarrow signifie "A SUIVRE", le symbole ∇ signifie "FIN".

Les cartes, planches, tableaux, etc., peuvent être filmés à des taux de réduction différents. Lorsque le document est trop grand pour être reproduit en un seul cliché, il est filmé à partir de l'angle supérieur gauche, de gauche à droite, et de haut en bas, en prenant le nombre d'images nécessaire. Les diagrammes suivants illustrent la méthode.

rrrata
to

pelure,
n à



32X





March 1850 J. Coburn's Camp

The Island of Campobello,

now one of the famous and most popular summer resorts on the Eastern coast, lies in Passamaquoddy Bay, about seventy miles north-east of Mt. Desert, and is about two miles distant from Eastport in the State of Maine.

The Island is irregular in shape, and its shores abound in exquisite details of scenery. There are beaches, chasms, coves and deep inlets. It is ten miles long, from two to three miles wide and has a circumference of about thirty miles. To the south-east lies the open sea, only here and there broken by islands and reefs, while to the north lie the placid waters of Passamaquoddy thickly sown with islands of great and varied beauty. The surface of the Island is broken, and the hills, many of them very abrupt, are covered with a dense growth of firs and larches and are delightfully picturesque and interesting. The giant cliffs that overhang the sea for many miles are wonderfully fine and excel in height and grandeur any along the coast excepting those at Grand Menan, eight miles distant. The views of these cliffs alone would well repay the visitor for the journey there.

Until within a few years this beautiful island was the property of an English family, the land being leased to tenants, chiefly fishermen and farmers, most of them industrious and thrifty. The Company has expended large amounts of money in improvements on the Island in order to introduce it to the world as one of the most charming and picturesque spots, for Summer life, yet offered. Many miles of

March 1880 J. C. Cabotwell

3029143

roads have been opened and the drives in every direction are delightful.

The Hotels are exquisite in design and finish and are complete in all their appointments.

The Tyn-y-Coed is pleasantly situated, near the water's edge, on an eminence seventy-five feet above the level of the sea. It is provided with all the comforts of a refined home; it is supplied with an abundance of clear spring water, and generous open fire-places are to be found in almost every room.

The Company's stables are provided with fine saddle and driving horses, and ample provision has been made for the care of horses belonging to visitors. The equipage is also superior, including wagonettes, dog-carts, village-carts and picnic wagons.

Excursions both near and remote are too numerous to mention and weeks may be profitably passed in making explorations without having covered half the ground. The Bay offers superior facilities for boating and sailing and is very safe, being free from sudden squalls; the fishing excellent; sailboats, row boats and canoes, with Indian guides, may always be obtained.

One may sail up the St. Croix, or, again, up the Denny, both of which rivers flow into the Passamaquoddy opposite Campobello. The charming Bay of St. Andrews, and the Indian encampment at Pleasant Point are points of intense interest.

By steamer one may go to St. Stephen, St. Andrews,



TyD-y-Coed aDd AHDDEX, (TyD-y-Maes.)

FROM THE PORCH OF THE WELLS COTTAGE.

St. John or Grand Menan; various lines of steamers centre at Eastport, and all points of interest in this wonderfully picturesque neighborhood are easily accessible.

It will no doubt be a matter of interest to many people to know that at Campobello one may find absolute relief from **HAY FEVER.**

The Hotels will be opened July 1st, and will be under the efficient management of Mr. & Mrs. T. A. Barker, who have had charge of them for several seasons.

Access to Campobello may be had by the fine steamers of the International line which leave Commercial Wharf, Boston, at 9 A. M., Mondays, Wednesdays and Fridays, and Portland at 5.30 the same evening, arriving at Campobello the next morning at 8 or 9 o'clock.

By taking the 12.30 train via the Boston & Maine or Eastern R. R. one can reach Portland in ample time to take the steamer there.

Baggage checked through to Campobello.

By rail, go via Boston & Maine or Eastern R. R. to St. Stephen; thence by steamer or carriage 28 miles to Eastport. By taking the 7 o'clock P. M. train from Boston, one can reach Eastport the following evening at 8 o'clock.

It is expected that arrangements will be made so that the 7 o'clock P. M. train will run through to St. Andrews, without change, and connection made with boat to Campobello.

Also to connect with early train from St. Andrews, reaching Boston the same evening.

The route by steamer from Boston or Portland is preferable. The elegant new steamers recently built for the International Line, are commodious and swift. Their appointments are excellent and the service admirable.

From Bar Harbor to Campobello

take steamer to Machias where carriages will be found in readiness to drive to Lubec; thence by ferry (10 minutes) to Campobello.

The drive from Machias to Lubec is easy and delightful and the entire excursion from Bar Harbor is intensely interesting.

Applications for rooms, for the season of 1888, may be made to T. A. BARKER, whose headquarters will be at the office of

ALEX S. PORTER,

General Manager Campobello Island Co.,

27 State St., Boston, Mass.

At the Tyn-y-Coed landing a new pier has been built for visitors and baggage.

From the head of the pier a new driveway leads to the hotel, enabling visitors to drive from the boat and avoid the steps.

Surveys

have been lately made under the direction of Prof. N. S. SHALER, of Harvard College, and the Company is prepared to offer large numbers of

• • COTTAGE LOTS • •

at reasonable prices.

The Company will be hereafter represented
In **CHICAGO**, by

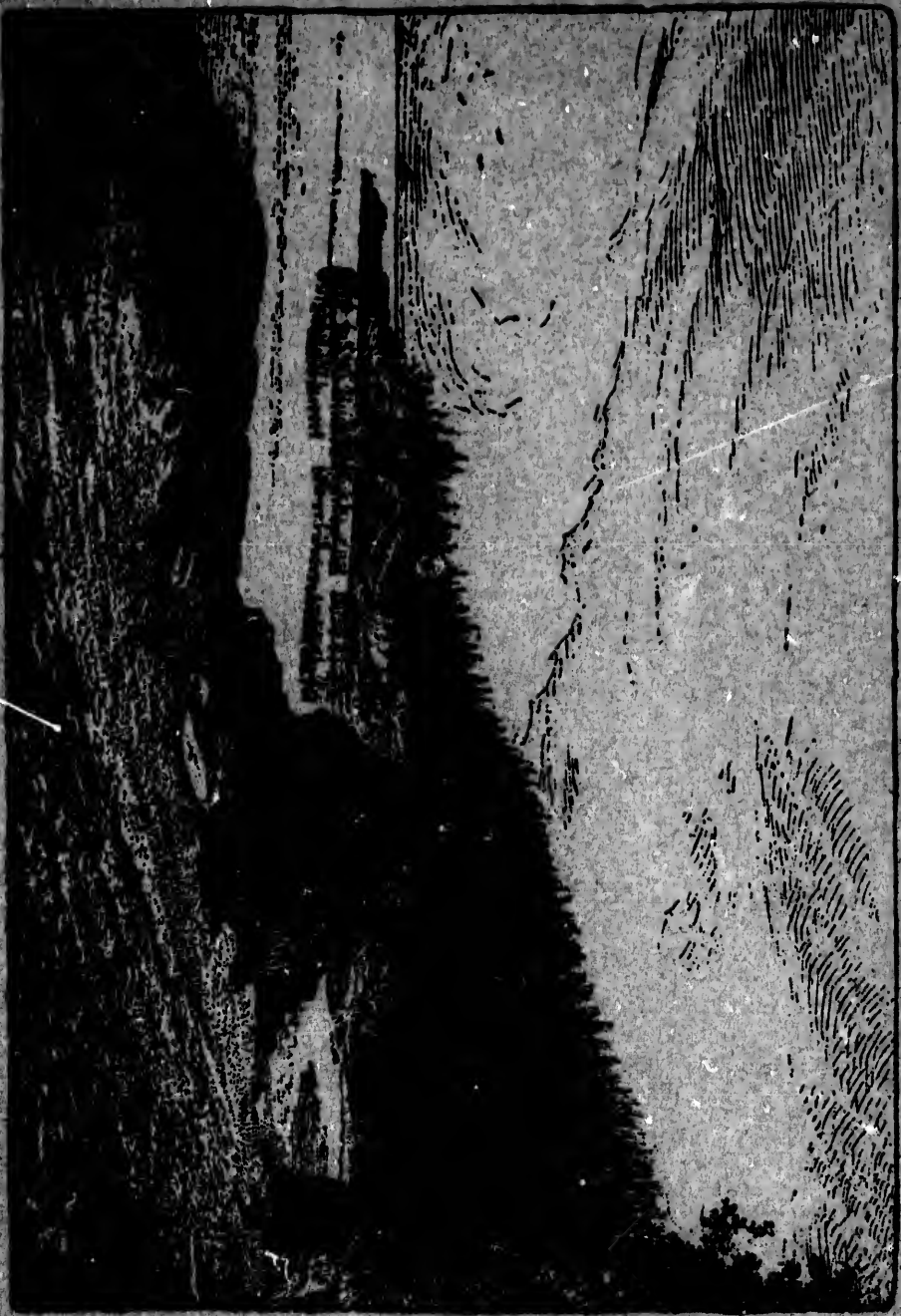
DUNLAP SMITH,

97 Washington St.

In **MINNEAPOLIS**, by

L. DE W. WASHBURN,

Boston Block.



Meadow Brook Cove.

Names and addresses of some of the visitors at
Campobello:—

S. Kingston McCay, 1980 Spruce St.,	Philadelphia.
E. I. H. Howell, 4636 Germantown Ave.,	"
Rodman Wister, 834 No. Ninth St.,	"
F. T. Fasset, 1807 De Lancy Place,	"
S. F. Corliss, 1707 Arch St.,	"
Prosper L. Senat,	"
J. M. Fox, 829 So. Broad St.,	"
Wm. Brooke Rawle, 230 So. 22d St.,	"
Andrew Blair, 8209 Race St.,	"
Geo. H. Miller, 1914 Chestnut St.,	"
John Lambert, Jr.	"
Wm. L. Stewart, 2008 Walnut St.,	"
Geo. W. Bacon, 118 So. 19 St.,	"
Henry Petit, " " " "	"
John W. Wright, 1432 Pine St.,	"
H. G. Ward, 216 So. 4th St.,	"
A. Wron Utassy, Germantown,	"
Robert Craven, 4108 Spruce St.,	"
Taber Ashton, 1182 Vine St.,	"
T. Wister Brown, Jr., 1420 Pine St.,	"
Chas. G. Leland, 220 So. Broad St.,	"
I. H. Brasier, 1808 Pine St.,	"
Harry Godey, 1841 Spruce St.,	"
Edgar Cope,	"
J. Shipley Newlin, 1018 Clinton Ave.,	"
Albert B. Williams, 617 Franklin St.,	"
Henry McCall,	"
C. Morton Smith, 1418 Walnut St.,	"
Travis Cochran, So. 22d St.,	"
Kirk B. Wells, 2133 Walnut St.,	"
Upton H. White, 1122 Girard St.,	"
R. M. Coyle, 3807 Spruce St.,	"
Geo. M. Canarroe, 1701 Spruce St.,	"
H. M. K. Ingersoll,	"
Mrs. J. W. Biddle,	"
Dr. Morris J. Lewis,	"
Dr. J. K. Lee,	"

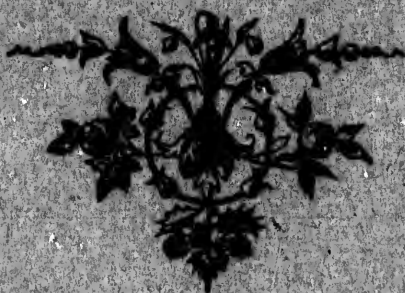
C. C. Savage,	Philadelphia.
B. H. Bartol,	"
Eyerly Hart,	"
J. Clarke Hare,	"
Mrs. H. B. Hare,	"
L. J. Larmore,	"
Henry G. Bryant,	"
Dr. Hutchinson,	"
Wm. M. Meigs,	"
Robert McCurdy,	"
Mrs. Thomas Balch,	"
Dr. R. H. Hart,	"
Chas. Hacker,	"
Chas. M. McCaul,	"
Wm. G. Audenreid,	"
H. G. Thomas,	"
C. Davis English,	"
Gustavus English,	"
J. B. Agnew,	"
J. M. Wilcox,	"
Alfred English,	"
Mrs. S. F. Abbott,	"
T. C. Yarnall,	"

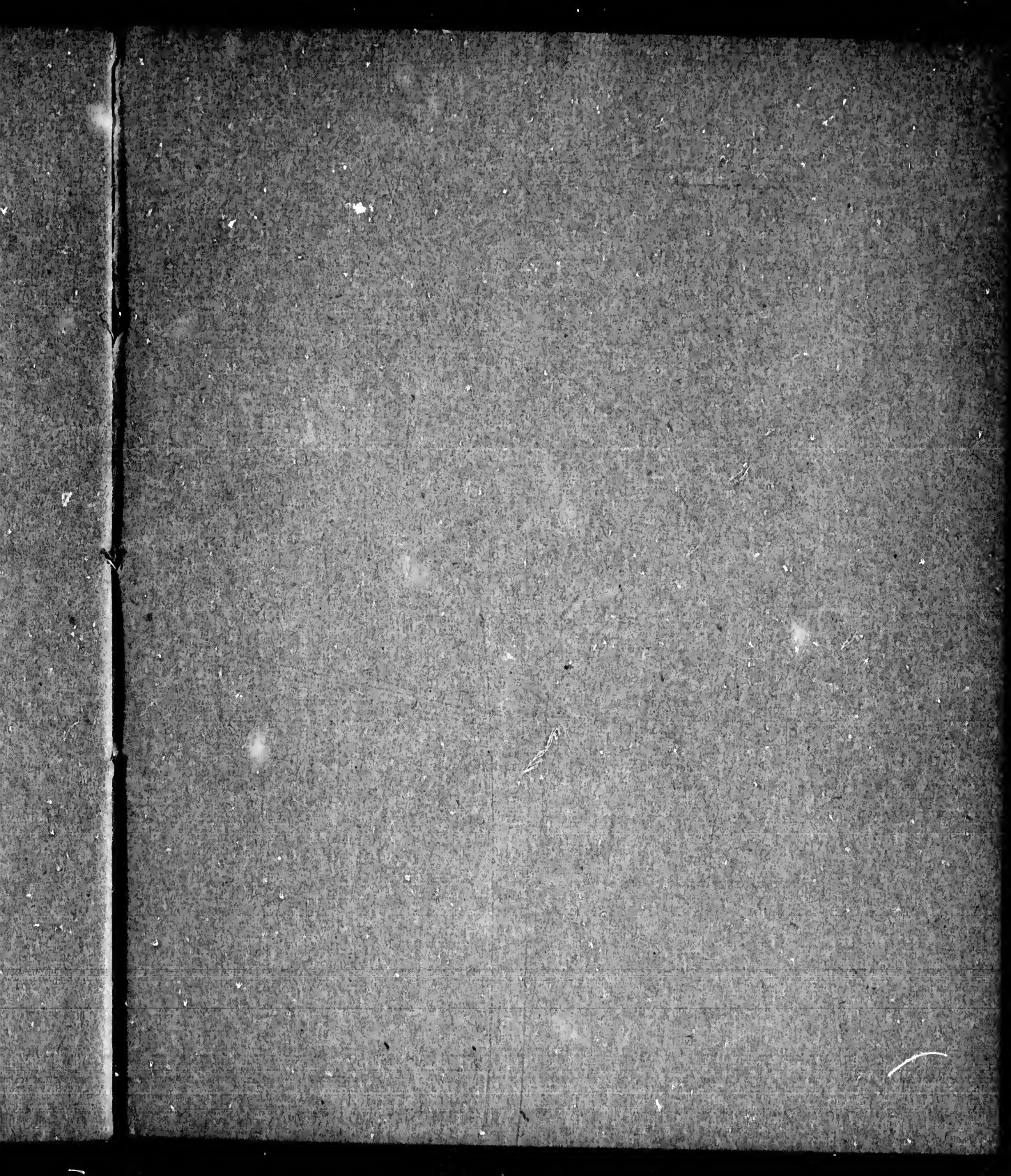
D. K. E. Fisher, Baltimore, Md.	Mrs. J. G. Baugher, Baltimore, Md.
Dr. C. Van Bibber,	Geo. F. Talbot, Portland, Me.
Mrs. J. W. Williams,	Miss Longfellow,
Miss S. Tyson,	T. C. Hersey,
John Murdock,	Henry Deering,
John T. Donaldson,	John A. Emery,
N. Murray,	T. Sterry Hunt, Montreal.
M. W. White, Jr.	Justin Winsor, Cambridge, Mass.
Eugene Ellicott,	Sam'l Longfellow,
Mrs. R. M. Wylie,	Rev. A. McKenzie,
S. Lyman Rice,	Prof. N. S. Shaler,
Geo. R. Webb,	Sam'l Batchelder,
Geo. P. Tiffany,	Morrill Wyman, Jr.,
F. Mudge,	Prof. A. S. Hill,
Charles Marshal,	Prof. Lewis Dyer,
Sidney G. Fisher,	Rev. F. G. Peabody,
Mrs. V. L. Levering,	Arthur Perrin,
B. F. Newcomer,	L. F. Brigham, Jr., Salem, Mass.

Mrs. G. Z. Silsbee,	Salem, Mass.	E. L. Gookin,	New York.
L. Tuckerman,	"	Somerville P. Tuck,	"
Miss Nesmitt,	Lowell, Mass.	Edw. E. Chase,	"
Geo. S. Motley,	"	Thos. J. Havermeyer,	"
Geo. R. Richardson,	"	A. C. Gurnee,	"
F. W. Stickney,	"	Jas. M. Stuart,	"
Sir F. de Winton,	London, Eng.	Mrs. N. C. Bayliss,	"
Sir Leonard Tilley,	Ottawa, Ont.	Miss C. Furness,	"
Livingston Blair,	"	A. Van Sinderin,	"
John B. Jackson,	Pittsburg, Penn.	John A. Bartow,	"
Mrs. D. R. Morrison,	"	E. Willard Roby,	"
Miss O'Hara,	"	Mrs. Mary A. Lord,	"
F. G. Kay,	"	Howard Conklin,	"
Mrs. T. M. Carnegie,	"	S. L. Parish,	"
Alex K. Nimick,	"	Robert Wade,	"
S. Boileau,	Easton, Penn.	Edw. Winslow,	"
R. I. Jones,	"	F. A. Snow,	"
Sidney Gile,	Cleveland, O.	Sam'l Lyman,	"
Mrs. H. B. Hurlbut,	"	C. R. Miller,	"
Edw. H. Ogden,	Riverton, R. I.	Robert H. Lamborn,	"
Miss C. P. Wagner,	Fishkill, N. Y.	Mrs. G. B. Sands,	"
J. B. Sargent,	New Haven, Ct.	Mrs. Wm. T. Blodgett,	"
E. W. Talcott,	Washington, D. C.	John C. Ten Eyck,	"
T. J. Probst,	Chicago, Ills.	Geo. W. Vanderbilt,	"
Wm. B. Gibbs,	"	J. J. Van Alen,	"
John G. Shorthall,	"	James Roosevelt,	"
Dr. R. N. Isham,	"	J. Russell White,	"
Geo. R. Burnet,	"	Dr. H. C. Houghton,	"
W. C. Wilson,	"	F. K. Trowbridge,	"
C. W. Fullerton,	"	C. W. Bangs,	"
F. W. Peck,	"	C. A. Coe,	"
C. J. Peck,	"	W. H. Forbes,	"
Col. Cooper,	"	Dr. W. H. Rockwell,	"
Chas. E. Lamb,	Providence, R. I.	E. R. Squibb,	"
G. S. Brownell,	Worcester, Mass.	Jas. W. McLane,	"
S. T. McCullough,	Annapolis, Md.	Edmund Weimore,	"
Geo. S. Grosvenor,	Trenton, N. J.	G. L. Rives,	"
Mrs. R. W. Forbes,	Brooklyn, N. Y.	F. K. Sturgis,	"
Chas. M. Cass,	Troy, N. Y.	David King,	"
James Gordon Bennett,	New York.	F. Bronson,	"
John Whipple,	"	Harry Fenn,	"
Isaac Townsend,	"	Alfred Pell,	"

Chas. P. Wells,	Boston, Mass.	Solomon Lincoln,	Boston, Mass.
Dr. Russell Sturgis 8d.	"	Augustus Flagg,	"
Mrs. James Lawrence,	"	Jos. B. Glover,	"
Mrs. Aug. Hemmenway,	"	E. V. R. Thayer,	"
Mrs. Walter Baker,	"	J. R. Gregerson,	"
Henry C. Snow,	"	Roger Walcott,	"
Rev. W. R. Alger,	"	Mrs. Stackpole,	"
Dr. Geo. H. Lyman,	"	Miss Lydia Head,	"
Wm. F. Aphthorp,	"	Dr. Frank Wells,	"
Causten Brown, Jr.	"	T. O. H. P. Burnham,	"
Frederic Guild, Jr.	"	H. Burnett,	"
Mrs. G. H. Towne,	"	J. P. Hawes,	"
Geo. A. Gardner,	"	J. S. Bigelow,	"
John L. Gardner, Jr.	"	Henry Bryant,	"
A. P. Rockwell,	"	John H. Childe,	"
T. E. Chamberlain,	"	Miss E. W. Healey,	"
Prof. H. W. Haynes,	"	Dr. Jacob Williams,	"
Peleg W. Chandler,	"	John C. Ropes,	"
E. A. Silsbee,	"	C. H. Sampson,	"
B. F. Campbell,	"	John Lathrop,	"
Mrs. E. H. Derby,	"	Wm. P. Blake,	"
Miss Lucy Derby,	"	R. H. White,	"
Henry C. Hutchings,	"	Mrs. B. R. Curtis,	"
Dan'l Sharp,	"	Henry Sayles,	"
Wm. Picknell,	"	Miss Ellen Frothingham,	"
J. Rogers Rich,	"	Edw. Bangs,	"
Robert S. Minot,	"	Miss C. E. Russell,	"
E. W. Rollins,	"	Dr. Sam'l A. Green,	"
Prof. W. Wetson,	"	Follen Cabot,	"
Dr. W. H. Gorham,	"	A. D. Weld, Jr.	"
Geo. F. Bemis,	"	Miss E. W. Perkins,	"
H. Chapin,	"	Geo. P. Sanger, Jr.	"
Dr. C. E. Inches,	"	Geo. Fred Williams,	"
Nathan Morse,	"	Mrs. H. N. Abbott,	"
Winslow Warren,	"	Dr. R. M. Lawrence,	"
Arthur Lincoln,	"	Wm. S. Hall,	"
Jos. S. Coolidge,	"	J. Arthur Beebe,	"
T. P. Proctor,	"	Miss M. A. Tappan,	"
L. W. Saltonstall,	"	Miss Rose Lamb,	"
E. S. Philbrick,	"	Wm. R. Robeson, Jr.	"
Miss Fanny Young,	"	Mrs. Wm. P. Atkinson,	"

Franklin Haven, Jr.	Boston, Mass.	Dr. Frank Wells,	Boston, Mass.
Geo. P. Bangs,	"	John Felt Osgood,	"
Mrs. Wm. B. Rogers,	"	John H. Cabot,	"
Dr. F. H. Williams,	"	John C. Gray,	"
Miss A. G. Frothingham,	"	Miss M. A. Wales,	"
Dr. Harold C. Ernst,	"	Mrs. N. W. Curtiss,	"
Morris Dorr,	"	Lewis W. Tappan,	"
Edw. D. Blake,	"	Mrs. John Brewer,	"
R. M. Morse, Jr.	"	Edwin Booth,	"
Miss Bertha W. Jacobs,	"	Lawrence Barrett,	"
Miss A. H. Thwing,	"	Dr. S. W. Langmaid,	"
J. G. Beals,	"	A. A. Lawrence,	"
Mrs. F. O. Dame,	"	T. Parsons,	"
Wm. Simes,	"	Mrs. J. Emory Hoar,	"
C. A. Kidder,	"	Miss M. L. Barton,	"







Tyn-y-Coed.

