

Technical and Bibliographic Notes/Notes techniques et bibliographiques

The Institute has attempted to obtain the best original copy available for filming. Features of this copy which may be bibliographically unique, which may affect any of the images in the reproduction, or which may significantly change the usual method of filming, are checked below.

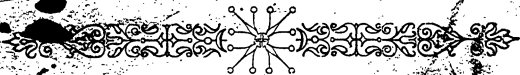
- Coloured covers/
Couverture de couleur
- Covers damaged/
Couverture endommagée
- Covers restored and/or laminated/
Couverture restaurée et/ou pelliculée
- Cover title missing/
Le titre de couverture manque
- Coloured maps/
Cartes géographiques en couleur
- Coloured ink (i.e. other than blue or black)/
Encre de couleur (i.e. autre que bleue ou noire)
- Coloured plates and/or illustrations/
Planches et/ou illustrations en couleur
- Bound with other material/
Relié avec d'autres documents
- Tight binding may cause shadows or distortion
along interior margin/
La reliure serrée peut causer de l'ombre ou de la
distorsion le long de la marge intérieure
- Blank leaves added during restoration may
appear within the text. Whenever possible, these
have been omitted from filming/
Il se peut que certaines pages blanches ajoutées
lors d'une restauration apparaissent dans le texte,
mais, lorsque cela était possible, ces pages n'ont
pas été filmées.
- Additional comments:/
Commentaires supplémentaires:

L'Institut a microfilmé le meilleur exemplaire qu'il lui a été possible de se procurer. Les détails de cet exemplaire qui sont peut-être uniques du point de vue bibliographique, qui peuvent modifier une image reproduite, ou qui peuvent exiger une modification dans la méthode normale de filmage sont indiqués ci-dessous.

- Coloured pages/
Pages de couleur
- Pages damaged/
Pages endommagées
- Pages restored and/or laminated/
Pages restaurées et/ou pelliculées
- Pages discoloured, stained or foxed/
Pages décolorées, tachetées ou piquées
- Pages detached/
Pages détachées
- Showthrough/
Transparence
- Quality of print varies/
Qualité inégale de l'impression
- Includes supplementary material/
Comprend du matériel supplémentaire
- Only edition available/
Seule édition disponible
- Pages wholly or partially obscured by errata
slips, tissues, etc., have been refilmed to
ensure the best possible image/
Les pages totalement ou partiellement
obscurcies par un feuillet d'errata, une pelure,
etc., ont été filmées à nouveau de façon à
obtenir la meilleure image possible.

This item is filmed at the reduction ratio checked below/
Ce document est filmé au taux de réduction indiqué ci-dessous.

10X	14X	18X	22X	26X	30X
<input type="checkbox"/>	<input checked="" type="checkbox"/>	<input type="checkbox"/>	<input type="checkbox"/>	<input type="checkbox"/>	<input type="checkbox"/>
12X	16X	20X	24X	28X	32X



Hellmuth Ladies' College,

LONDON, ONT.



ANNUAL * EXERCISES

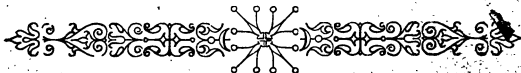


MAY

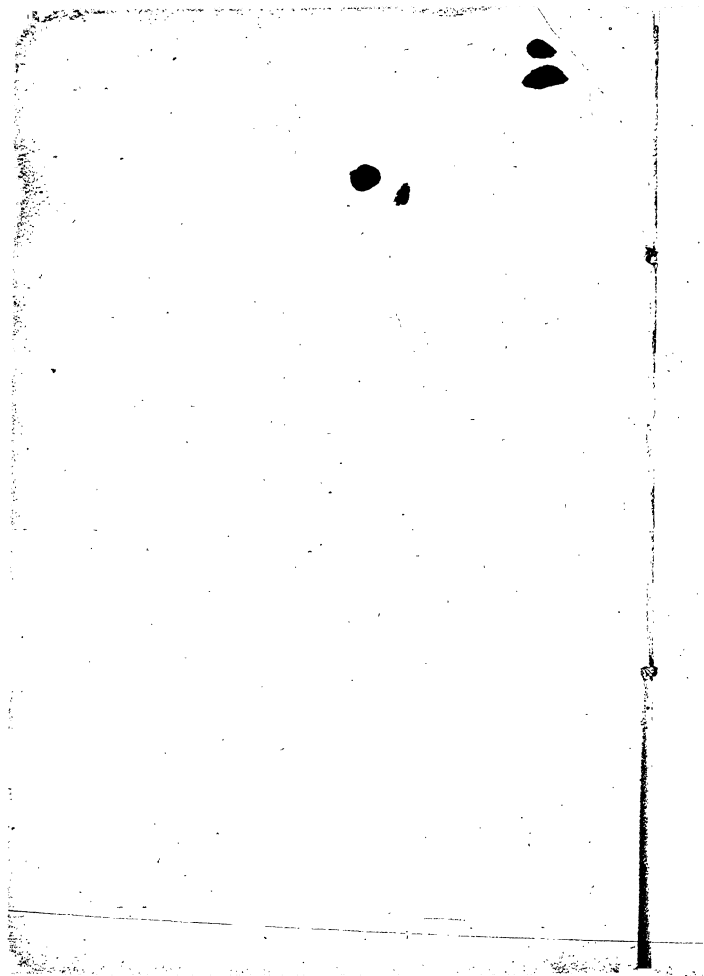
10th, 17th, 23rd and 31st.

JUNE

6th, 7th, 9th, 10th, 11th, 12th, 1889.



FREE PRESS, LONDON.



First Programme

—AT—

Hellmuth Ladies' College, on Friday Ev'g, May 10th,

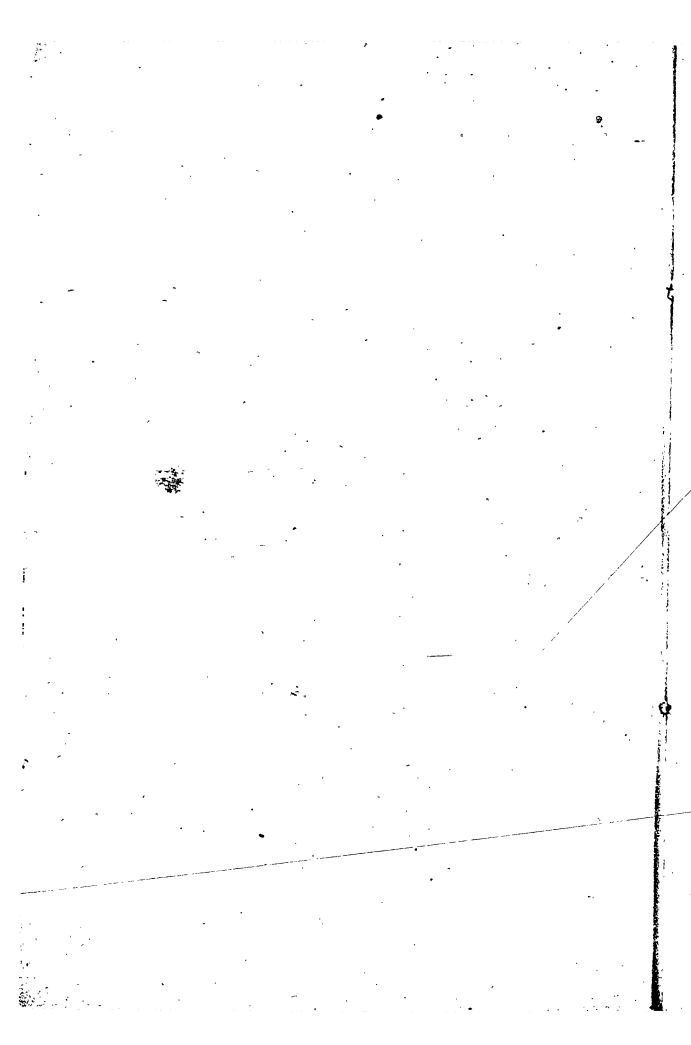
AT 7.30 O'CLOCK.

Omnibuses will leave the Post Office at seven o'clock.

1. OVERTURE—"The Magic Flute." - - - - - *Mozart*
(Four Pianos: Eight Performers.)
**Misses R. & E. Herr, Hetfield, Seidle, Miner,
Morphy, English and Smith.**
2. SONG—"Anchored." - - - - - *Watson*
Miss Mae Anderson.
3. PIANO SOLOS—(a) Bourée (E Flat.) - - - - - *Bach*
(b) Prelude. - - - - - *Chopin*
(c) March. - - - - - *Hiller*
Miss Myrtle Parks.
4. FRENCH RECITATION—"Le Gland et la Citrouille." - *La Fontaine*
Miss Pearle Buckner.
5. CONCERTO, in A Major, (1st movement.) - - - - - *Mozart*
Miss Viola Brown.
6. DUET—"Maying." - - - - - *A. M. Smith*
Misses Blanche Smith and Lottie Childs.
7. PIANO SOLOS—(a) Impromptu, (A Flat.) - - - - - *Schubert*
(b) Gavotte. - - - - - *Silas*
Miss Martha Buck.
8. ITALIAN RECITATION—"Pensava." - - - - - *S. Fellico*
Miss Rosalie Jackson.
9. CONCERTO, in C Minor, (3rd movement.) - - - - - *Beethoven*
Miss Blanche Smith.
10. SONG—"In the Chimney Corner." - - - - - *Cowen*
Miss Clare Childs.
11. CONCERTO, in F Minor, (2nd and 3rd movements.) - - - *Chopin*
Miss Alma Scott.

GOD SAVE THE QUEEN.

Omnibuses will leave at 9.30 o'clock.



Second Programme.

-AT-

Hellmuth Ladies' Collège, on Friday Ev'g, May 17th,

AT 7.30 O'CLOCK.

Omnibuses will leave the Post Office at seven o'clock.

1. RONDO, in D Major, - - - - - *Mozart*
(For two pianos.)

Misses Donna Tilghman and Edna Sloan.

2. SONG—"The Bird that came in May." - - - - - *Benedict*
Miss Blanche Smith.

3. PIANO SOLOS—(a) "Au Matin." - - - - - *Godard*
(b) Mazurka (G Major.) - - - - - *Moszkowsky*
Miss Marietta Williams.

4. SPANISH RECITATION—"Resignacion." - - - - - *D. Gonzalez*
Miss Grace Parry.

5. PIANO SOLO—"Polonaise in C Sharp Minor." - - - - - *Chopin*
Miss Lizzie Hagerman.

6. TRIO—"Serenade." - - - - - *Schubert*
**Misses Lottie Childs, Blanche Smith and
Clare Childs.**

7. An Essay on Physics, accompanied with Illustrations.
Miss Mary Gibbons.

8. PIANO SOLO—"Impromptu in B Flat Major." - - - - - *Schubert*
Miss Minnie Field.

9. FRENCH RECITATION—"Cinna." - - - - - *Corneille*
Miss Caroline Schereschewsky.

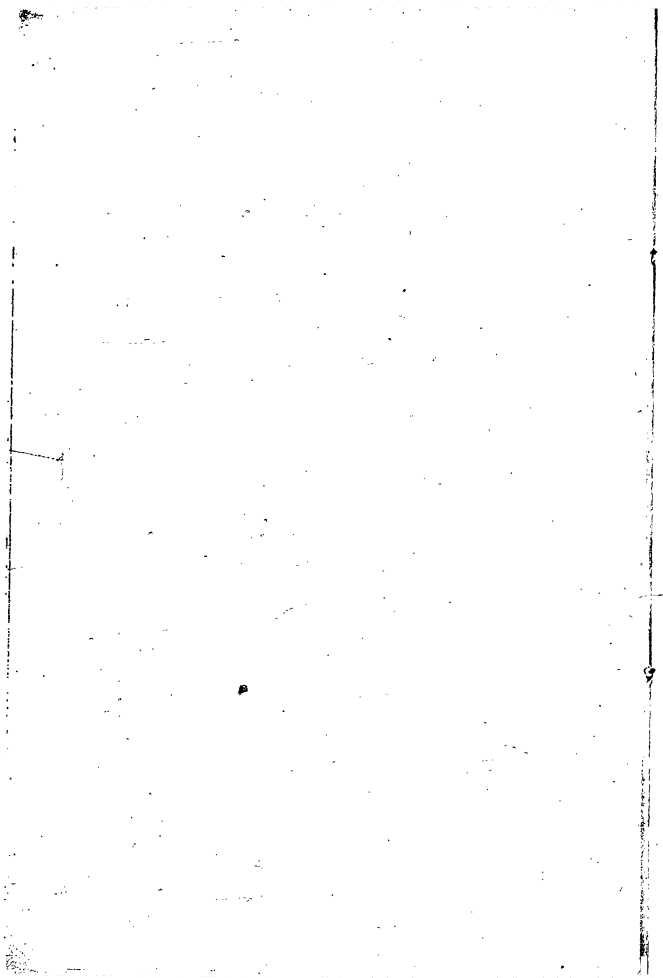
10. "Largo," from the C Minor Concerto. - - - - - *Beethoven*
Miss Edith McCammon.

11. SONGS—(a) "Marguerite." - - - - - } *Meyer-Helmund*
(b) "Daily Question." - - - - - }
Miss Pauline Chapman.

12. CONCERTO, in E Flat—"Emperor." - - - - - *Beethoven*
(1st Movement.)
Miss Etta Herr.

GOD SAVE THE QUEEN.

Omnibuses will leave at 9.30 o'clock.



Third Programme.

—AT—

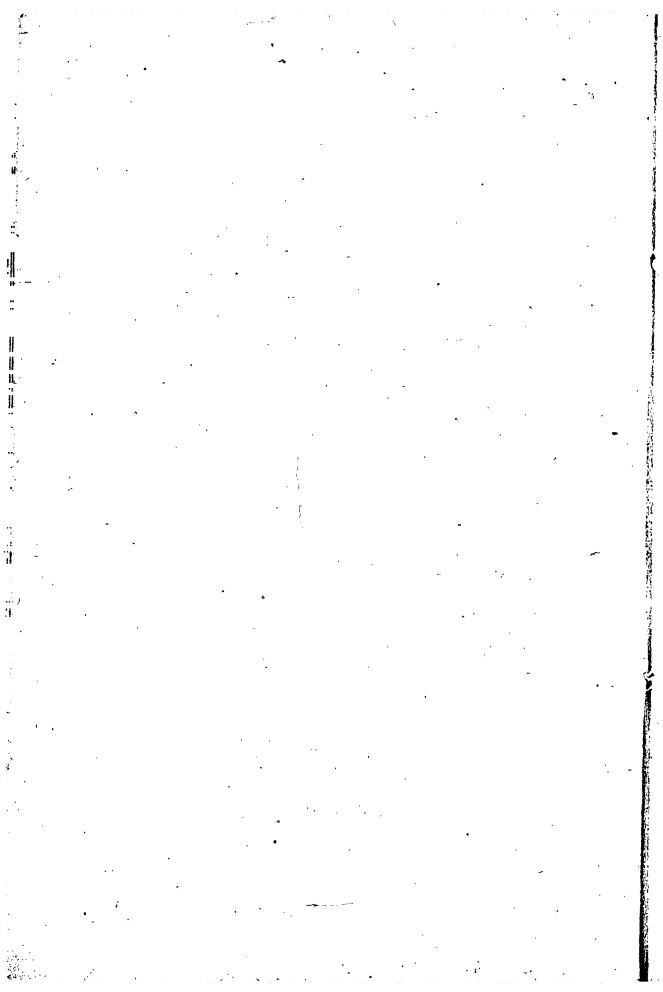
Hellmuth Ladies' College, on Thursday Ev'g, May 23rd,

AT 7.30 O'CLOCK.

Omnibuses will leave the Post Office at seven o'clock.

1. SERENADE AND ALLEGRO GIOCO. - - - - - *Mendelssohn*
Miss Buzzie Gurd.
2. ARIA—"Infelice" (Ernani.) - - - - - *Verdi*
Miss Lottie Childs.
3. GREEK RECITATION—"The Husbandman and his Sons." *Esop*
Miss Donna Tilghman.
4. An Essay on Chemistry, accompanied with Experiments by two or three members of the class.
Essayist, Miss Florian Smith.
5. SONG—"Dost Thou Know that Sweet Land?" (Mignon.) *Ambroise Thomas*
Miss Minnie Field.
6. SONATA, in E Minor, op. 90. - - - - - *Beethoven*
Miss Alice Seaborne.
7. ITALIAN RECITATION—"Fortuna." - - - - - *Dante*
Miss Cornelia Hopkins.
8. SONG—"The Young Nun." - - - - - *Schubert*
Miss Florence Iredell.
9. PIANO SOLOS—(a) Impromptu, (A Flat.) - - - - - *Chopin*
(b) Souvenir de Peterhof. - - - - - *Strelezki*
(c) "Dedication." - - - - - *Schumann-Liszt*
Miss Ida English.
10. GERMAN RECITATION—"Gebet während der Schlacht," - *Körner*
Miss May Albers.
11. CONCERTO, in G Minor - - - - - *Mendelssohn*
1st Movement :
Miss Florence Iredell.
2nd and 3rd Movements :
Miss Constance Meredith.
GOD SAVE THE QUEEN.

Omnibuses will leave at 9.30 o'clock.



Fourth Programme.

—AT—

Hellmuth Ladies' College, on Friday Evening, May 31st,

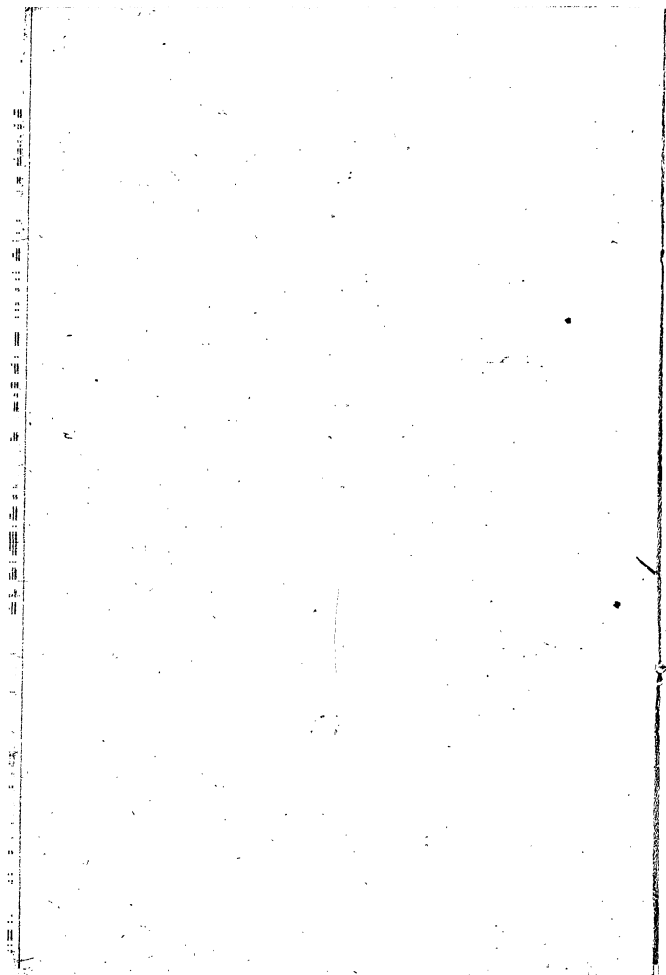
AT 7.30 O'CLOCK.

Omnibuses will leave the Post Office at seven o'clock.

1. "The Polish Boy." - - - - - *Ann S. Stephens*
Miss Inez Taylor.
2. "Jane Conquest." - - - - - *Milne*
Miss Kate Anderson.
3. "Aux Italiens." - - - - - *Owen Meredith*
Miss Grace Williams.
4. a. "The Bell of Zanzora." - - - - - *W. R. Rose*
b. "The Little Hatchet Story." - - - - - *R. J. Burdette*
Miss Helena Taylor.
5. "A Child's Dream of a Star." - - - - - *Dickens*
Miss Caroline Schereschewsky.
6. (a) "The Ride of Jennie McNeil." - - - - - *Will Carleton*
(b) "Teaching Him the Business." - - - - - *Anon*
Miss Eugenia Kerr.
7. "The Last Banquet." - - - - - *Edward Renaud*
Miss Cornelia Hopkins.
8. (a) "The First Settler's Story." - - - - - *Will Carleton*
(b) "A Telephonic Conversation." - - - - - *Mark Twain*
Miss Louise Wilson.

GOD SAVE THE QUEEN.

Omnibuses will leave at 9.30 o'clock.



Fifth Programme.

PIANO RECITAL

—BY—

THE MISSES MABEL MINER AND VIRGINIA SEIDLE.

(Graduating Pupils H. L. C. School of Music, 1889.)

—AT—

Hellmuth Ladies' College, Thursday Ev'g, June 6th,

AT 7.30 O'CLOCK.

Omnibuses will leave the Post Office at 7.00 o'clock.

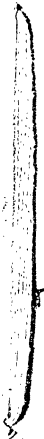
PROGRAMME.

1. CONCERTO, in G Minor (2nd and 3rd movements.) - Mendelssohn
Miss Virginia Seidle.
2. SONG—(a) "Wooring." - - - - - Strelezki
(b) "Magic Song." - - - - - Meyer-Helmund
Miss Florence Iredell.
3. SONATA, in A Flat, Op. 26. - - - - - Beethoven
Miss Virginia Seidle.
4. "Moonlight Sonata." - - - - - Beethoven
Miss Mabel Miner.
5. ANIA—"Una Voce poco fa" (Barbier.) - - - - - Rossini
Miss Pauline Chapman.
6. CONCERTSTÜCK, in F Minor. - - - - - Weber
Miss Mabel Miner.

GOD SAVE THE QUEEN.

Omnibuses will leave at nine o'clock.

S



Sixth Programme.

SACRED CONCERT IN ST. ANN'S CHAPEL

HELLMUTH LADIES' COLLEGE,

On Friday Afternoon, June 7th, at 3 o'clock.

Omnibuses will leave the Post Office at 2.30 o'clock.

1. ORGAN SOLO—The celebrated "Fantasie and Fugue, G Minor." *Bach*
Miss Alice Seaborne.
2. ORGAN SOLO—"Bridal Song." - - - - - *Jensen-Eddy*
Miss Marietta Williams.
3. SONG—"Eternal Rest." - - - - - *Piccolomini*
Miss Clare Childs.
4. ORGAN SOLO—"Elevation," A Flat, Op. 25, No. *Guiltmant*
Miss Virginia Seidle.
5. ORGAN SOLO—"Gavotte," Op. 7. - - - - - *Roeder-Eddy*
Miss Mabel Miner.
6. SONG—"Jerusalem." - - - - - *Parker*
Miss Florence Iredell.
7. ORGAN SOLO—"Stradella" Overture. - - - - - *Flotow*
Miss Edith McCammon.
8. ORGAN SOLO—"Offertoire," E Flat. - - - - - *Wely*
Miss Jennie Hewitt.
9. RECIT. & ARIA—"The Lord is my Light." *J. B. Marsh*
Miss Pauline Chapman.
10. ORGAN SOLOS { (a) "Offertoire," No. 1. - - - - - *Batiste*
Miss Maud Hudson.
(b) "Offertoire," No. 2. - - - - - *Batiste*
Miss Lillian Phillips.

Omnibuses will leave at 4.30 o'clock.

ST. ANN'S CHAPEL

Choir Director—MISS N. VON SEYFRIED.

Organist—MISS EDITH McCAMMON.

Chapel Monitress—MISS MINNIE FIELD.

CHOIR

SOPRANO.

- MISS MINNIE FIELD.
" PAULINE CHAPMAN.
" FLORENCE IREDELL.
" MABEL CLARKE.
" JULIA HAGERMAN.
" LIZZIE HAGERMAN.
" ALBERTA JONTÉ.

TENOR.

- " BLANCHE SMITH,
" LOTTIE CHILDS.

ALTO.

- " CLARE CHILDS.
" MABEL PETERS.

— ST. * ANN'S * CHAPEL —

(HELLMUTH LADIES' COLLEGE.)

Sunday, June 9th—Whitsun-Day.

Holy Communion,

8 A. M.

Morning Prayer,

11 A. M.

ORDER OF SERVICE:

VENITE.	- - - - -	<i>Elvey in B Flat.</i>
PSALMS 48, 68.	- - - - -	- - - - -
FIRST LESSON.	- - - - -	<i>Deut. xvi. to v. 18.</i>
TE DEUM.	- - - - -	<i>Schilling in F.</i>
SECOND LESSON.	- - - - -	<i>Romans viii. to v. 18.</i>
JUBILATE.	- - - - -	<i>Schilling in F.</i>
HYMN.	- - - - -	253.
KYRIE.	- - - - -	<i>Bridgewater in A Flat.</i>
GLORIA TIBI AND GRATIA.	- - - - -	<i>Tours in F.</i>
HYMN.	- - - - -	245.

Sermon.

Preacher—RIGHT REV. BISHOP BALDWIN, D. D.

Offertory.

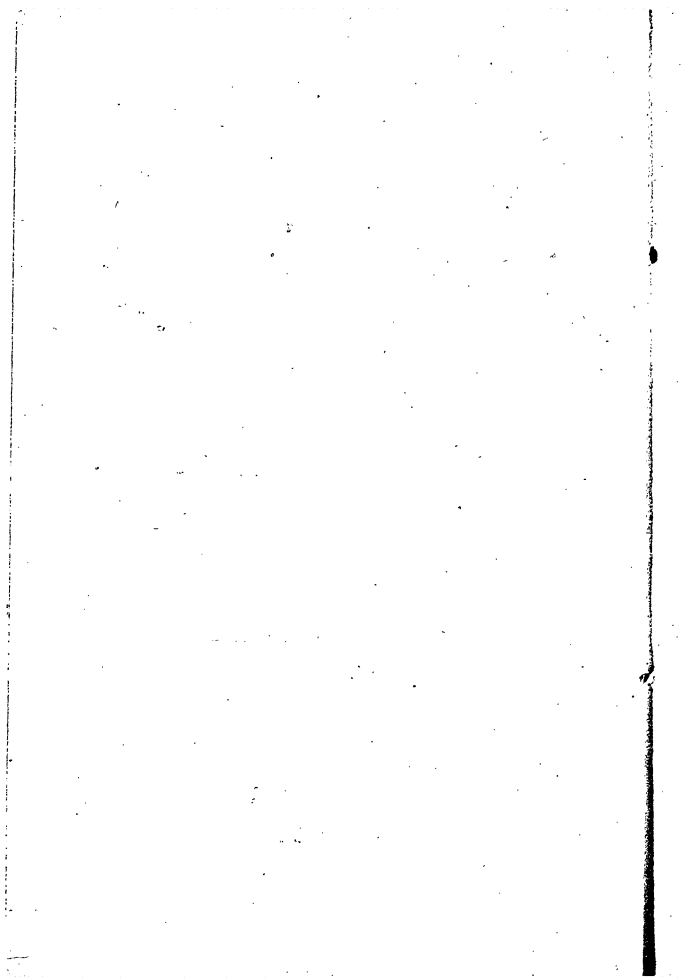
VOLUNTARY—Evening.

Dudley Buck,

Benediction.

Citany.

4 P. M.



Seventh Programme.

PIANO RECITAL

—BY—

THE MISSES DELLA HETFIELD AND EVELYN MORPHY

(Graduating Pupils H. L. C. School of Music, 1889.)

—AT—

Hellmuth Ladies' College, Monday Ev'g, June 10th,

AT 7.30 O'CLOCK.

Omnibuses will leave the Post Office at 7.00 o'clock.

PROGRAMME.

1. CONCERTO, in A Minor (1st movement.) - - - - - *Schumann*
Miss Della Hetfield.
2. SONG—"Cuckoo Song." - - - - - *Abt*
Miss Blanche Smith.
3. SONATA—"Pathétique." - - - - - *Beethoven*
Miss Della Hetfield.
4. SONATA, in E Minor, Op. 90. - - - - - *Beethoven*
Miss Evelyn Morphy.
5. SIEBEL'S ROMANCE—"Le Parlate d'Amor" (Faust.) - *Gounod*
Miss Clare Childs.
6. PIANO SOLOS—

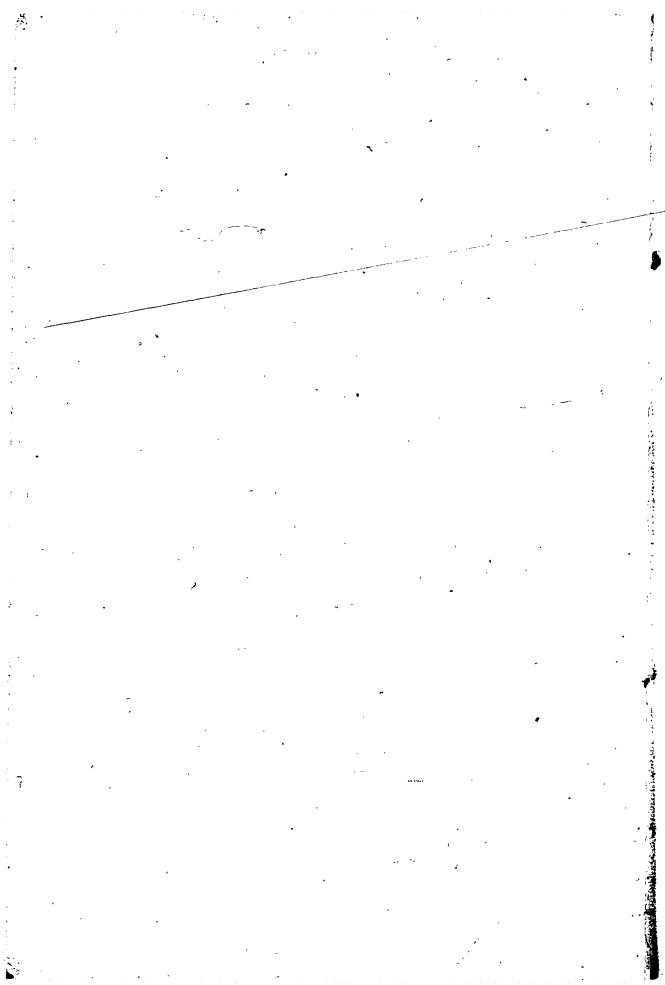
(a) Prelude and Fugue (C Sharp Major.)	- - - - -	<i>Bach</i>
(b) Consolazione.	- - - - -	<i>Liszt</i>
(c) Tarantelle.	- - - - -	} <i>Chopin</i>
(d) Nocturne (F Sharp Minor.)	- - - - -	
(e) Ballade (A Flat)	- - - - -	

Miss Evelyn Morphy.

GOD SAVE THE QUEEN.

EXHIBITION OF ART WORK IN THE STUDIOS.

Omnibuses will leave at 9.30 o'clock.



Eighth Programme.

PIANO RECITAL

—BY—

MISS RUBY HERR,

(Graduate H. L. C. School of Music, 1888 ; Candidate for
Leipzig Scholarship 1889.)

—AT—

Hellmuth Ladies' College, Tuesday Ev'g, June 11th,

AT 7.30 O'CLOCK.

Omnibuses will leave the Post Office at 7.00 o'clock.

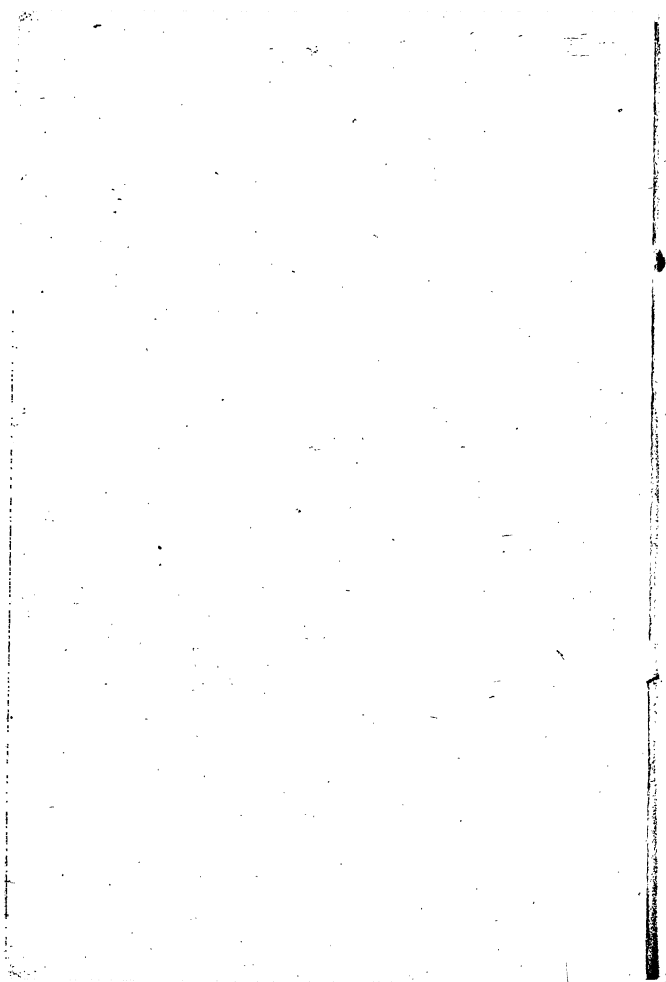
PROGRAMME

- | | | |
|------------------------------------|-----------|-----------------------|
| 1. CONCERTO, in G Minor. | - - - - - | <i>Saint-Saëns</i> |
| 2. SONATA, in C Major—"Waldstein." | - - - - - | <i>Beethoven</i> |
| 3. PIANO SOLOS: | | |
| (a) Prelude, in A Minor. | - - - - - | <i>Bach</i> |
| (b) "Vogel als Prophet." | - - - - - | <i>Schumann</i> |
| (c) Fantasie-Impromptu. | - - - - - | <i>Chopin</i> |
| (d) "Isolde's Liebestod." | - - - - - | } <i>Wagner-Liszt</i> |
| (e) Grand March (Tannhäuser.) | - - - - - | |

GOD SAVE THE QUEEN

EXHIBITION OF ART WORK IN THE STUDIOS.

Omnibuses will leave at 9.30 o'clock.



GOMMENGEMENT * DAY

HELLMUTH LADIES' COLLEGE,

On Wednesday Afternoon, June 12, 1889,

AT 2.30 O'CLOCK.

Omnibuses will leave the Post Office at 2 o'clock.

1. PIANO SOLOS—(a) Invention. - - - - - *Bach*
(b) "Warum?" - - - - - *Schumann*
(c) Mazurka, No. 2. - - - - - *Godard*

Miss Mabel Miner.

2. LATIN RECITATION—"Cataline." - - - - - *Cicero*

Miss Mary Wolfe.

3. ARIA—"Non so più cosa son," (Figaro.) - - - - - *Mozart*

Miss Minnie Field.

4. PIANO SOLOS—(a) Souvenir de Peterhof. - - - - - *Strelezki*
(b) Mazurka, in G Minor. - - - - - *Moszkowsky*

Miss Virginia Seidle.

READING OF THE PRIZE ESSAY.

5. FRENCH RECITATION—"Les Femmes Savantes." - - - - - *Molière*

Miss Nora Jackson.

6. CHORUS—"Hail, Lovely Morn." - - - - - *Wagner*

Choir of St. Ann's Chapel.

7. PIANO SOLOS—(a) Nocturne, No. 5. - - - - - *Chopin*
(b) Norwegian Bridal March. - - - - - *Grieg*

Miss Della Hetfield.

8. ENGLISH RECITATION—"Virginia." - - - - - *Macaulay*

Miss Cornelia Hopkins.

9. POLACCA BRILLANT, in E Major. - - - - - *Weber-Liszt*

Miss Evelyn Morphy.

VALEDICTORY.

Distribution of Diplomas, Medals, Scholarships and Prizes.

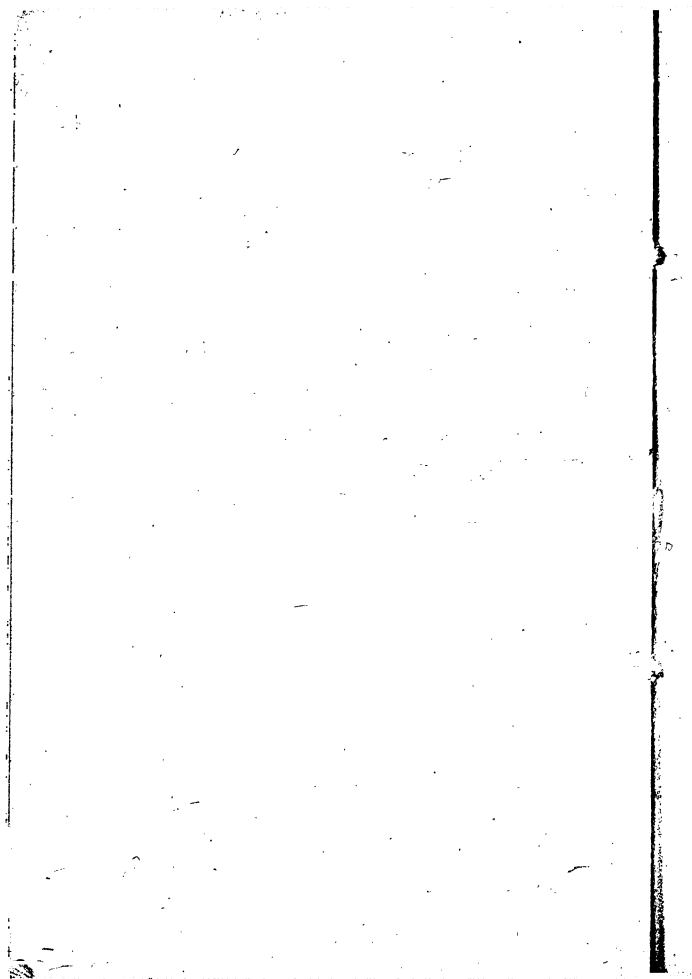
ADDRESSES.

LADIES' DRILL AND FENCING EXERCISES.

EXHIBITION OF ART WORK IN THE STUDIOS.

Riding School Exercises.

GOD SAVE THE QUEEN.



*The Pianos used at these Concerts were obtained
from Messrs. A. & S. Nordheimer, Toronto.*
