

**CIHM
Microfiche
Series
(Monographs)**

**ICMH
Collection de
microfiches
(monographies)**



Canadian Institute for Historical Microreproductions / Institut canadien de microreproductions historiques

© 1999

Th
co
ma
th
sig
ch

This
Ce d

10x

Technical and Bibliographic Notes / Notes techniques et bibliographiques

The Institute has attempted to obtain the best original copy available for filming. Features of this copy which may be bibliographically unique, which may alter any of the images in the reproduction, or which may significantly change the usual method of filming are checked below.

- Coloured covers / Couverture de couleur
- Covers damaged / Couverture endommagée
- Covers restored and/or laminated / Couverture restaurée et/ou pelliculée
- Cover title missing / Le titre de couverture manque
- Coloured maps / Cartes géographiques en couleur
- Coloured ink (i.e. other than blue or black) / Encre de couleur (i.e. autre que bleue ou noire)
- Coloured plates and/or illustrations / Planches et/ou illustrations en couleur
- Bound with other material / Relié avec d'autres documents
- Only edition available / Seule édition disponible
- Tight binding may cause shadows or distortion along interior margin / La reliure serrée peut causer de l'ombre ou de la distorsion le long de la marge intérieure.
- Blank leaves added during restorations may appear within the text. Whenever possible, these have been omitted from filming / Il se peut que certaines pages blanches ajoutées lors d'une restauration apparaissent dans le texte, mais, lorsque cela était possible, ces pages n'ont pas été filmées.
- Additional comments / Commentaires supplémentaires: This copy is a photoreproduction.

L'Institut a microfilmé le meilleur exemplaire qu'il lui a été possible de se procurer. Les détails de cet exemplaire qui sont peut-être uniques du point de vue bibliographique, qui peuvent modifier une image reproduite, ou qui peuvent exiger une modification dans la méthode normale de filmage sont indiqués ci-dessous.

- Coloured pages / Pages de couleur
- Pages damaged / Pages endommagées
- Pages restored and/or laminated / Pages restaurées et/ou pelliculées
- Pages discoloured, stained or foxed / Pages décolorées, tachetées ou piquées
- Pages detached / Pages détachées
- Showthrough / Transparence
- Quality of print varies / Qualité inégale de l'impression
- Includes supplementary material / Comprend du matériel supplémentaire
- Pages wholly or partially obscured by errata slips, tissues, etc., have been refilmed to ensure the best possible image / Les pages totalement ou partiellement obscurcies par un feuillet d'errata, une pelure, etc., ont été filmées à nouveau de façon à obtenir la meilleure image possible.
- Opposing pages with varying colouration or discolourations are filmed twice to ensure the best possible image / Les pages s'opposant ayant des colorations variables ou des décolorations sont filmées deux fois afin d'obtenir la meilleure image possible.

This item is filmed at the reduction ratio checked below /
Ce document est filmé au taux de réduction indiqué ci-dessous.

10x		14x		18x		22x		26x		30x
<input type="checkbox"/>	<input type="checkbox"/>	<input type="checkbox"/>	<input type="checkbox"/>	<input type="checkbox"/>	<input type="checkbox"/>	<input checked="" type="checkbox"/>	<input type="checkbox"/>	<input type="checkbox"/>	<input type="checkbox"/>	<input type="checkbox"/>
	12x		16x		20x		24x		28x	32x

The copy filmed here has been reproduced thanks to the generosity of:

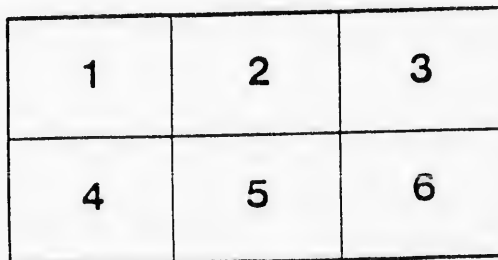
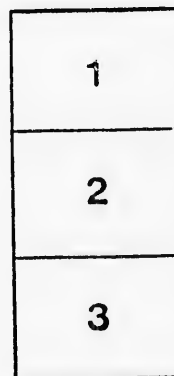
National Gallery of Canada,
Library

The images appearing here are the best quality possible considering the condition and legibility of the original copy and in keeping with the filming contract specifications.

Original copies in printed paper covers are filmed beginning with the front cover and ending on the last page with a printed or illustrated impression, or the back cover when appropriate. All other original copies are filmed beginning on the first page with a printed or illustrated impression, and ending on the last page with a printed or illustrated impression.

The last recorded frame on each microfiche shall contain the symbol \rightarrow (meaning "CONTINUED"), or the symbol ∇ (meaning "END"), whichever applies.

Maps, plates, charts, etc., may be filmed at different reduction ratios. Those too large to be entirely included in one exposure are filmed beginning in the upper left hand corner, left to right and top to bottom, as many frames as required. The following diagrams illustrate the method:



L'exemplaire filmé fut reproduit grâce à la générosité de:

Musée des Beaux-Arts du Canada,
Bibliothèque

Les images suivantes ont été reproduites avec le plus grand soin, compte tenu de la condition et de la netteté de l'exemplaire filmé, et en conformité avec les conditions du contrat de filmage.

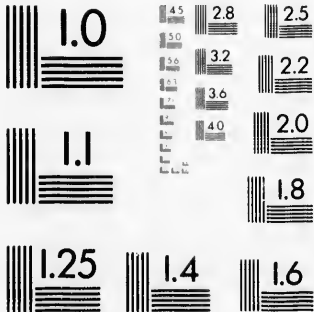
Les exemplaires originaux dont la couverture en papier est imprimée sont filmés en commençant par le premier plat et en terminant soit par la dernière page qui comporte une empreinte d'impression ou d'illustration, soit par le second plat, selon le cas. Tous les autres exemplaires originaux sont filmés en commençant par la première page qui comporte une empreinte d'impression ou d'illustration et en terminant par la dernière page qui comporte une telle empreinte.

Un des symboles suivants apparaîtra sur la dernière image de chaque microfiche, selon le cas: le symbole \rightarrow signifie "A SUIVRE", le symbole ∇ signifie "FIN".

Les cartes, planches, tableaux, etc., peuvent être filmés à des taux de réduction différents. Lorsque le document est trop grand pour être reproduit en un seul cliché, il est filmé à partir de l'angle supérieur gauche, de gauche à droite, et de haut en bas, en prenant le nombre d'images nécessaire. Les diagrammes suivants illustrent la méthode.

MICROCOPY RESOLUTION TEST CHART

(ANSI and ISO TEST CHART No. 2)



APPLIED IMAGE Inc

16^F3 East Main Street
Rochester, New York 14609 USA
(716) 482 - 0300 - Phone
(716) 288 - 5989 - Fax

C
ND244
.097
c.1

Art Exhibition

Owen
Sound,

=== May 10th to 15th, '95.

Open each day

from

3 to 6

and

7 to 11

o'clock.



Catalogue of Paintings.

Price 5 cents.

METROPOLITAN
TORONTO
CENTRAL
LIBRARY

Fine Art



FA
REF
CIR
SR
REF
CIR

Music

Poetry

Painting

and Sculpture:::

Are universally regarded as the greatest of the Fine Arts; and following not far below these in order of merit stands the Millinery Art, for in this art similar ends—such as harmony, beauty, originality and adaptation—are always kept in view. This can best be illustrated by a visit to the

Millinery

Department

of...

Ryan Bros'

Up-to-date Store, where you will find that which is artistic, as well as serviceable.

A large, complete, and varied Stock of
the Newest Goods in every Department.

754.17

384

SEP - 4 1966



FA
REF
CIR
SR
REF
CIR

CATALOGUE OF PAINTINGS.



BLATCHLY (W. D.)

- 1 Russet, Gold, and Green\$25 00
- 2 A Quiet Nook..... 25 00
- 3 Reflections..... 30 00
- 4 Golden Autumn 30 00



BELL-SMITH (F. M.), R.C.A.

- 5 LIGHTS OF A CITY STREET..... 2500 00
- 6 Canyon in the Rockies..... 200 00
- 7 The Morning Paper..... 100 00
- 8 Land's End, Cornwall 100 00
- 9 Hyde Park Corner, London 100 00
- 10 Stormy Weather, Coast of Cornwall 25 00

BASTEDO (MISS).

- 11 Pastel Portrait 25 00
- 12 Roses..... 10 00

of the
these in
in this
y, origi-
n view.
to the

which

of
t.

CRUIKSHANKE (W.), R.C.A.

13	Breaking a Road	500 00
14	Algoma Free Grant	60 00
15	Chicks	50 00

CHALLENGER (FREDERICK S.), A.R.C.A.

16	Golden October	250 00
17	The Hayfield	100 00
18	Forty Winks	50 00
19	Where the Lake and River Meet	35 00
20	A Mountain Village	20 00



FORSTER (J. W. L.), A.R.C.A.

21	Lieut.-Col. Allan, Q.O.R.	200 00
22	Master "Jack" Eastwood	200 00

FORD (MISS HARRIET), A.R.C.A.

23	A Woman's Story by a Winter Fire	200 00
24	Study in Sunlight	75 00

OWEN SOUND ART EXHIBITION.

GAGEN (R. F.), A.R.C.A.

25 Lilacs 50 00

JACOBI (O. R.), R.C.A.

26 Sundown in the Backwoods 120 00

27 School Children 25 00

28 Country Sweethearts 25 00

KNOWLES (F. M.), A.R.C.A.

29 Fisherman's Cottages 40 00

30 Cancules Fisherwomen 100 00

KIDD (J.)

31 Anxious for their Morning Walk 100 00

32 Study 75 00

33 Roses 35 00

34 Watering 30 00

35 A Melody Divine 150 00

35^a Duett between Age and Youth 100 00

35^b September Sunshine at Wiarton 100 00

35^c Dividing the Spoil 75 00

MARTIN (MISS E. MAY).

36 Old Church at Lakefield 12 00

37 Clear Lake 7 00

38 Otonabee River 5 00

MATTHEWS (M.), R.C.A.

39 Falls near Kamloops, B.C. 35 00

40 Looking down on Rogers' Pass, from Mt. Albert . . 75 00

41 Rainy Weather, Kicking Horse Pass 15 00

42 Hermit Range from Mt. Albert, Selkirks 15 00

MANLY (C. MACDONALD), A.R.C.A.

43	Fringed with Gold	25 00
44	Land of the Peach and Vine (<i>Water Color</i>)	150 00
45	Across the Bay	20 00
46	The Beach at Bron e (<i>Water Color</i>)	10 00
47	October in Devonshire	300 00

MARTIN (T. MOWER), R.C.A.

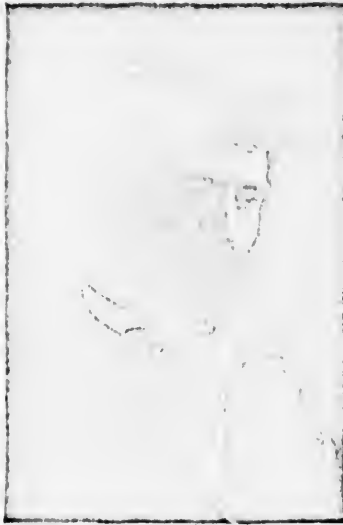
48	Just in Time.....	150 00
49	Planning the New Barn.....	200 00
50	At the Barn Door.....	30 00
51	In the Winter.....	7 50
52	On Georgian Bay.....	7 50



O'BRIEN (L. R.), R.C.A.

53	Gathering Hay on Coldwater Marshes (<i>Water Color</i>)	125 00
54	Canterbury Cathedral..... (<i>Water Color</i>)	225 00
55	The Grand River at Doon..... (<i>Water Color</i>)	125 00

56
57
58
59
60
61
62
63
64
65
66
67
68
69
69a



REID (G. A.), R.C.A.

56	THE FORECLOSURE OF THE MORTGAGE.	6000 00
57	City and Country	300 00
58	Rest--Decoration Panel (study for large picture) . .	400 00
59	A MODERN MADONNA (<i>Paris Salon, 1894</i>)..	1200 00
60	In the Meadows.	75 00
61	Day Dreams	50 00
62	After Rain.	25 00
63	The Buck-wheat Field	50 00
64	Mother and Child	300 00
65	Among the Daisies	125 00
66	Night Fall.	10 00
67	A Modern Madonna, <i>Pastel</i> (study for large picture)	100 00
68	While Nature Dreams (<i>Water Color</i>)	20 00
69	Portrait (of Mrs. G. A. Reid).	
69a	My Portrait.	

REID (MRS. G. A.), A.R.C.A.

70	Wild Agaveus	50 00
71	An Idle Hour	100 00
72	Chrysanthemums	25 00
73	Pansies	20 00
74	Field Daisies	35 00
75	First Autumn Leaves	25 00
76	Autumn in the Catskills	10 00
77	Autumn Woods	10 00
78	Roses	25 00
79	Pink Roses	30 00
80	Blossoms	15 00

ROLPH (JOSEPH T.), A.R.C.A.

81	October Day, near Toronto	25 00
82	West Gouldsboro, Maine, U.S.	30 00
83	At Buckhorn, Hall's Bridge	25 00
84	Near Bobcaygeon	15 00

SHERWOOD (W. A.)

84a	Where the Deer Feeds	10 00
84b	News Boys	75 00

STAPLES (OWEN),

85	The Old Barn	10 00
86	Harvest	30 00
87	In the Shade	60 00
88	Autumn	15 00
89	Cattle	10 00

SPURR (MISS GERTRUDE), A.R.C.A.

50 00	90 Upland Road, Point Levis	40 00
100 00	91 Mimico River	50 00
25 00	92 Street in Cloverly	50 00
20 00	93 On the Grand River, Elora	30 00
35 00	94 A Glimp of Autumn	15 00
25 00	95 Old Farm on the Humber	45 00
10 00	96 Rustic Bridge, Springfield	40 00
10 00	97 Mimico Creek	50 00 ^h
25 00	98 Fish out of Water	50 00 ^r
30 00	99 In Russet Mantle Clad	10 00
15 00	100 October Glow, Doon	5 00

TULLY (MISS S. STRICKLAND), A.R.C.A.

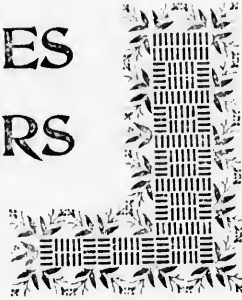
25 00	101 Lullaby	35 00
30 00	102 Memories	100 00
25 00	103 Landscape	30 00
15 00	104 Within Sound of the Sea	50 00
	105 Roses	15 00

VERNER (F. A.), A.R.C.A.

10 00	106 Autumn near Sandwich, Ont.	35 00
75 00	107 Welford, near Stratford-on-Avon	35 00
	108 Birch, Over-hanging the Pond	30 00
	109 Cheemong Lake	25 00
10 00	110 Dutch Girl of Flushing	20 00
30 00	111 Waiting in Despair	20 00
60 00	112 Old Cottages, Wiltshire	40 00
15 00	113 Sunset	25 00
10 00	114 Alarmed	100 00

BOOTS, SHOES AND SLIPPERS

OUR
STOCK
OF . . .



Summer Footwear

In all the Leading Styles
and Colors, is now very
complete, and we would in-
vite special attention to our

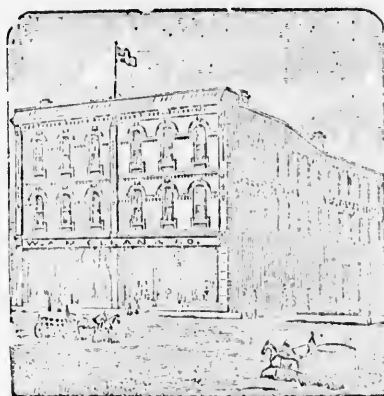
Light and Dark Tan Dongola Juliets and Oxfords

And White Canvas Oxfords, of which
we are showing an immense variety.

WM. EWENS

Water Street,
Opp. Seldon House.

W. A. McCLEAN & CO.



NOTED FOR NOTORIOUS

...TEAS...

DIAMOND "A" HAMS

AND

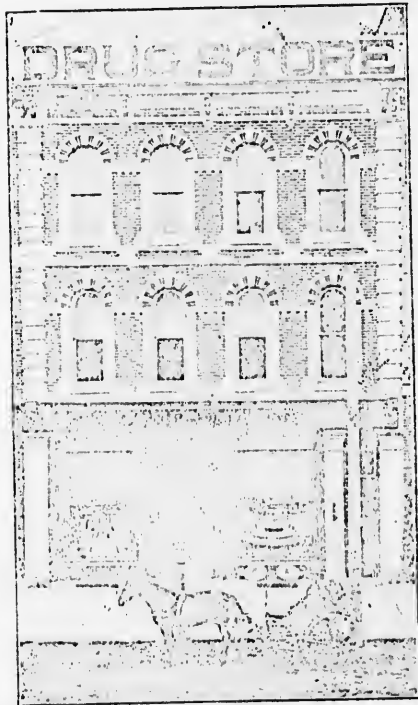
SPICED BACON

We Lead
the
Trade ... in



PURE DRUGS

Perfumes
•
Patent
Medicines
•
Toilet
Articles
•
Dye Stuffs
•••
...USE...
Cameron's
LaGrippe &
Fever Cure
•
Cholera
Cordial
•
Family Oil
and
Family
Ointment



Brushes
•
Combs
•
Chamois
•
Sponges
•••
...USE...
Cameron's
Hair
Restorer
•
Glycerine
Balm
•
Household
Arnica
•
Magic
Clothes
and
Kid Glove
Cleaners

D. A. CAMERON & Co.

OWEN SOUND.



thes

•
Combs

•
nois

•
onges

•••
SE ...

•
eron's

•
estorer

•
erine
Balm

•
schold
Arnica

•
ic
Clothes
and
Glove
Cleaners

Co.

