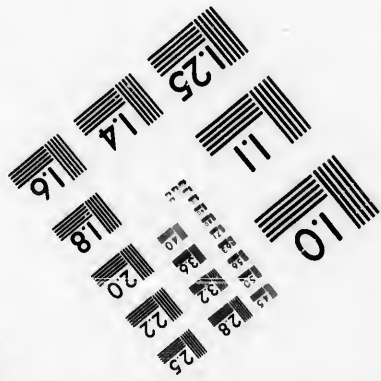
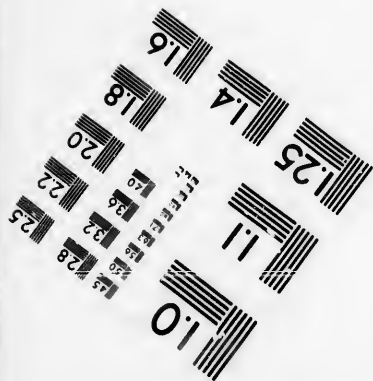
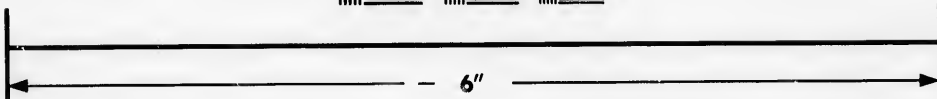
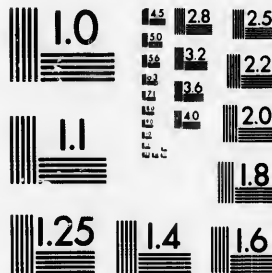


**IMAGE EVALUATION
TEST TARGET (MT-3)**



**Photographic
Sciences
Corporation**

23 WEST MAIN STREET
WEBSTER, N.Y. 14580
(716) 872-4503

18
20
22
25
28
32
36

**CIHM/ICMH
Microfiche
Series.**

**CIHM/ICMH
Collection de
microfiches.**



Canadian Institute for Historical Microreproductions / Institut canadien de microreproductions historiques

01
02
03
04
05
06
07
08
09
10

© 1986

Technical and Bibliographic Notes/Notes techniques et bibliographiques

The Institute has attempted to obtain the best original copy available for filming. Features of this copy which may be bibliographically unique, which may alter any of the images in the reproduction, or which may significantly change the usual method of filming, are checked below.

L'Institut a microfilmé le meilleur exemplaire qu'il lui a été possible de se procurer. Les détails de cet exemplaire qui sont peut-être uniques du point de vue bibliographique, qui peuvent modifier une image reproduite, ou qui peuvent exiger une modification dans la méthode normale de filmage sont indiqués ci-dessous.

- | | |
|--|--|
| <input type="checkbox"/> Coloured covers/
Couverture de couleur | <input checked="" type="checkbox"/> Coloured pages/
Pages de couleur |
| <input type="checkbox"/> Covers damaged/
Couverture endommagée | <input type="checkbox"/> Pages damaged/
Pages endommagées |
| <input type="checkbox"/> Covers restored and/or laminated/
Couverture restaurée et/ou pelliculée | <input type="checkbox"/> Pages restored and/or laminated/
Pages restaurées et/ou pelliculées |
| <input type="checkbox"/> Cover title missing/
Le titre de couverture manque | <input checked="" type="checkbox"/> Pages discoloured, stained or foxed/
Pages décolorées, tachetées ou piquées |
| <input type="checkbox"/> Coloured maps/
Cartes géographiques en couleur | <input type="checkbox"/> Pages detached/
Pages détachées |
| <input checked="" type="checkbox"/> Coloured ink (i.e. other than blue or black)/
Encre de couleur (i.e. autre que bleue ou noire) | <input type="checkbox"/> Showthrough/
Transparence |
| <input checked="" type="checkbox"/> Coloured plates and/or illustrations/
Planches et/ou illustrations en couleur | <input type="checkbox"/> Quality of print varies/
Qualité inégale de l'impression |
| <input checked="" type="checkbox"/> Bound with other material/
Relié avec d'autres documents | <input type="checkbox"/> Includes supplementary material/
Comprend du matériel supplémentaire |
| <input type="checkbox"/> Tight binding may cause shadows or distortion
along interior margin/
La reliure serrée peut causer de l'ombre ou de la
distorsion le long de la marge intérieure | <input type="checkbox"/> Only edition available/
Seule édition disponible |
| <input type="checkbox"/> Blank leaves added during restoration may
appear within the text. Whenever possible, these
have been omitted from filming/
Il se peut que certaines pages blanches ajoutées
lors d'une restauration apparaissent dans le texte,
mais, lorsque cela était possible, ces pages n'ont
pas été filmées. | <input type="checkbox"/> Pages wholly or partially obscured by errata
slips, tissues, etc., have been refilmed to
ensure the best possible image/
Les pages totalement ou partiellement
obscurcies par un feuillet d'errata, une pelure,
etc., ont été filmées à nouveau de façon à
obtenir la meilleure image possible. |
| <input checked="" type="checkbox"/> Additional comments: / [Printed ephemera] [5] p.
Commentaires supplémentaires: | |

This item is filmed at the reduction ratio checked below/
Ce document est filmé au taux de réduction indiqué ci-dessous.

10X	12X	14X	16X	18X	20X	22X	24X	26X	28X	30X	32X
				/							

The copy filmed here has been reproduced thanks to the generosity of:

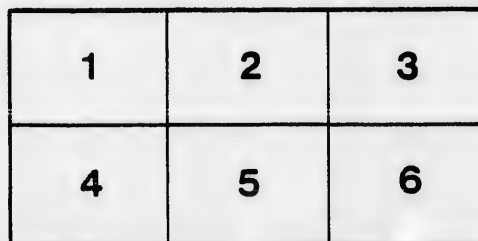
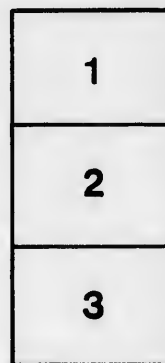
D. B. Weldon Library
University of Western Ontario
(Regional History Room)

The images appearing here are the best quality possible considering the condition and legibility of the original copy and in keeping with the filming contract specifications.

Original copies in printed paper covers are filmed beginning with the front cover and ending on the last page with a printed or illustrated impression, or the back cover when appropriate. All other original copies are filmed beginning on the first page with a printed or illustrated impression, and ending on the last page with a printed or illustrated impression.

The last recorded frame on each microfiche sheet contain the symbol \rightarrow (meaning "CONTINUED"), or the symbol ∇ (meaning "END"), whichever applies.

Maps, plates, charts, etc., may be filmed at different reduction ratios. Those too large to be entirely included in one exposure are filmed beginning in the upper left hand corner, left to right and top to bottom, as many frames as required. The following diagrams illustrate the method:



L'exemplaire filmé fut reproduit grâce à la générosité de:

D. B. Weldon Library
University of Western Ontario
(Regional History Room)

Les images suivantes ont été reproduites avec le plus grand soin, compte tenu de la condition et de la netteté de l'exemplaire filmé, et en conformité avec les conditions du contrat de filmage.

Les exemplaires originaux dont la couverture en papier est imprimée sont filmés en commençant par le premier plat et en terminant soit par la dernière page qui comporte une empreinte d'impression ou d'illustration, soit par le second plat, selon le cas. Tous les autres exemplaires originaux sont filmés en commençant par la première page qui comporte une empreinte d'impression ou d'illustration et en terminant par la dernière page qui comporte une telle empreinte.

Un des symboles suivants apparaîtra sur la dernière image de chaque microfiche, selon le cas: le symbole \rightarrow signifie "A SUIVRE", le symbole ∇ signifie "FIN".

Les cartes, planches, tableaux, etc., peuvent être filmés à des taux de réduction différents. Lorsque le document est trop grand pour être reproduit en un seul cliché, il est filmé à partir de l'angle supérieur gauche, de gauche à droite, et de haut en bas, en prenant le nombre d'images nécessaire. Les diagrammes suivants illustrent la méthode.

e
étails
s du
modifier
r une
ilmage

es

errata
to

pelure.
on à

32X

The.....

Baconian

.....Club



ELEVENTH

Annual Banquet

.....

* GRIGG HOUSE. *

LONDON, ONT.

On Friday, May 3rd, 1895.

“Haste thee
Jest and y
Quips, and
Nods, and

1894-'95



“Haste thee, Nymph, and bring with thee
Jest and youthful jollity,
Quips, and cranks, and wanton wiles,
Nods, and becks, and wreathed smiles.”

L'Allegro.



Toasts.



"And in his brain, which is as dry as the remainder biscuit, after
hath strange places crammed with observation, the which he vents
forms."—"As You Like It"

"The Queen."

"Broad based upon her people's will
And compassed by the inviolate sea."—*Tennyson.*

"Baconian Club."

"Now by two-headed Janus!
Nature hath framed strange fellows in her time."—"Merchant

"Our Dominion."

W. C. FERC

"For a dastard is he, of craven soul,
And worthy of felon's brand,
Who will not join me, right heartily,
In three cheers for our native land!"—*Anon*

"Our Patron Saint."

J. W. WHE

"The priest of Nature's mysteries,
The father of inductive philosophy,
The incomparable Verulam."—*Hume*

"Human Limitations."

O. J. STEVEN

"This is the porcelain clay of human kind."—*Dryden.*

"For such as we are made of, so we be."—*Twelfth Night*

"The Old Boys."

JOHN STEVEN

"My heart still bends to my good old friends."

"The Learned Professions."

C. G. JARV

G. N. WEEK

LAW.

MEDICINE

"Dispute it like a man." *Macbeth.*

"You undergo too stri * a ,
trying to make an ugly
fair."—*Timon of Athen*

in
56k

"Law is a sort of hocus-pocus science,"
Macklin

"Can honor set a leg?"—

V.

U. A. BUCHNER.

DR. WEEKES

DIVINITY.

"Thou villain base, knowest me not by my clothes?"—*Cymbelin*

"The Press."

REV. M. P. TALL

REV. THOS. CUL

"Though an angel should write, still 'tis devils must print."—*Mo*

"Our Schools."

JAS. NICHOL

Smith—"He can read, and write, and cast account."

Cade—"Oh! monstrous!"

Smith—"We took him a setting of boys' copies!"

Cade—"Here's a villain."—*Henry IV.*

D. E. GALBRAITH.

T. J. MURPHY.

"The Ladies."

"Disguise our bondage as we will,
'Tis woman, woman rules us still."—*Moore.*

"The Philistines."

C. BECHER.

W. J. HARVEY.

"And when you stick on conversation's burrs,
Don't strew your pathway with those dreadfat urs."—*Holmes.*

"To err is human, to forgive divine."—*Pope*

Menu.

*"One Pinch, a hungry, lean-faced villain,
A mere anatomy"*

Little Neck Clams.

Royal Puse of Chicken, a la Delmonico.

"Feed and regard him not"

Sliced Tomatoes. Radishes. Sliced Cucumbers. Lettuce.

Red Sea Salmon, a la Financiere.

Pomme de Terre Duchesse.

Boiled Ham, Champagne Sauce. Boiled Fowl, Parsley Sauce.

"Masters spread yourselves."

Prime Ribs of Beef, au Jus. Spring Lamb, with Mint Sauce.
Roast Turkey Stuffed, Cranberry Sauce.

Grigg House Punch.

Escalops of Sweet Breads, Richelieu. Frogs Legs, Saute a la Bohemienne.
Pineapple Fritters, Sauce au Rum.

"How say you to a fat tripe finely broiled"

Shrimp Salad. Lobster Salad.

Potatoes. Mashed Potatoes. Sweet Corn.
Sweet Potatoes. Asparagus on Toast.

Pudding, Brandy Sauce. Chocolate Blanc Mange.

"I'll make an end of my meat, there's pippins and cheese to come."

Apple Pie. Meringue Pie. Strawberry Tart.

Lady Fingers. French Kisses. Angel Cake. Fruit Cake.

Brandy Jelly. Port Wine Jelly.

Florida Oranges. Bananas. Pineapples.
London Layer Raisins. Mixed Nuts and Candies.

"Wouldst thou both eat thy cake and have it?"

Strawberries and Cream. Raspberry Ice Cream.

Green Tea. Coffee. English Breakfast Tea.

Roquefort Cheese. Canaan Cheese.

*"O! hour of all hours, the most blessed upon earth,
Blessed hour of our dinners"*



Officers.



1894-1895.

PRESIDENT.	-	-	-	W. C. FERGL
VICE-PRES..	-	-	-	U. A. BUCHN
SEC.-TREAS.,	-	-	-	O J. STEVEN

Councillors.

JOHN STEVENSON. J. W. WHEATON. J. N. ...

Music.

" Music hath charms to soothe the savage bre

ROSELLE POCOCKE.
W. A. WILSON.

W.
R.

TE
NE
i a
ungly
Athen

Recitations.

WM GREENWOOD R. A. LITT

" Oh stay! Oh stay!
Joy so seldom weaves a chain
Like this to-night; that, oh! 'tis pain
To break its links so soon."

"Gentlemen, rise, his highness is not well."



