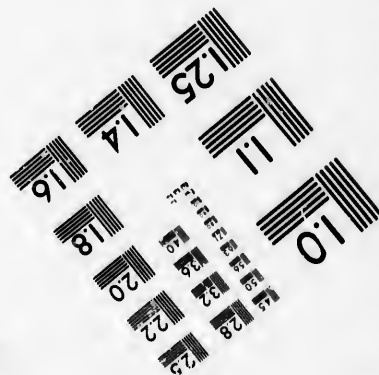
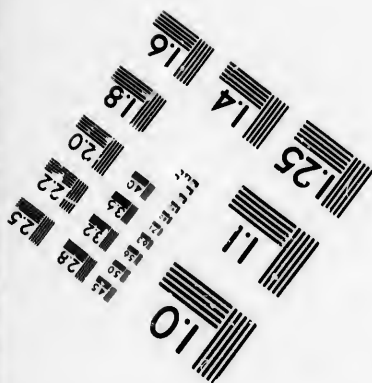
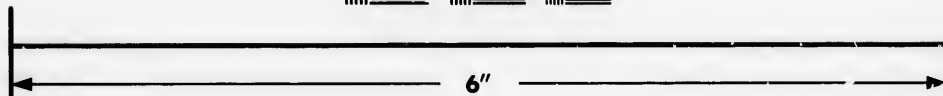
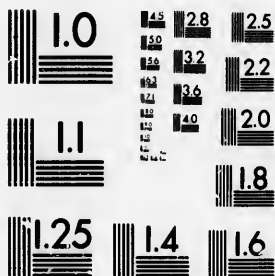


**IMAGE EVALUATION  
TEST TARGET (MT-3)**



**Photographic  
Sciences  
Corporation**

23 WEST MAIN STREET  
WEBSTER, N.Y. 14580  
(716) 872-4503

14 12.8 12.5  
13.2 12  
13.6 11.8  
12.0

**CIHM/ICMH  
Microfiche  
Series.**

**CIHM/ICMH  
Collection de  
microfiches.**



**Canadian Institute for Historical Microreproductions / Institut canadien de microreproductions historiques**

10

**© 1985**

Technical and Bibliographic Notes/Notes techniques et bibliographiques

The institute has attempted to obtain the best original copy available for filming. Features of this copy which may be bibliographically unique, which may alter any of the images in the reproduction, or which may significantly change the usual method of filming, are checked below.

L'institut a microfilmé le meilleur exemplaire qu'il lui a été possible de se procurer. Les détails de cet exemplaire qui sont peut-être uniques du point de vue bibliographique, qui peuvent modifier une image reproduite, ou qui peuvent exiger une modification dans la méthode normale de filmage sont indiqués ci-dessous.

- |  |  |
|--|--|
| <input type="checkbox"/> Coloured covers/<br>Couverture de couleur   | <input type="checkbox"/> Coloured pages/<br>Pages de couleur   |
| <input type="checkbox"/> Covers damaged/<br>Couverture endommagée  | <input checked="" type="checkbox"/> Pages damaged/<br>Pages endommagées  |
| <input type="checkbox"/> Covers restored and/or laminated/<br>Couverture restaurée et/ou pelliculée  | <input type="checkbox"/> Pages restored and/or laminated/<br>Pages restaurées et/ou pelliculées  |
| <input type="checkbox"/> Cover title missing/<br>Le titre de couverture manque   | <input checked="" type="checkbox"/> Pages discoloured, stained or foxed/<br>Pages décolorées, tachetées ou piquées   |
| <input type="checkbox"/> Coloured maps/<br>Cartes géographiques en couleur   | <input type="checkbox"/> Pages detached/<br>Pages détachées  |
| <input type="checkbox"/> Coloured ink (i.e. other than blue or black)/<br>Encre de couleur (i.e. autre que bleue ou noire)   | <input checked="" type="checkbox"/> Showthrough/<br>Transparence   |
| <input type="checkbox"/> Coloured plates and/or illustrations/<br>Planches et/ou illustrations en couleur  | <input type="checkbox"/> Quality of print varies/<br>Qualité inégale de l'impression   |
| <input type="checkbox"/> Bound with other material/<br>Relié avec d'autres documents   | <input type="checkbox"/> Includes supplementary material/<br>Comprend du matériel supplémentaire   |
| <input type="checkbox"/> Tight binding may cause shadows or distortion<br>along interior margin/<br>La reliure serrée peut causer de l'ombre ou de la<br>distortion le long de la marge intérieure   | <input type="checkbox"/> Only edition available/<br>Seule édition disponible   |
| <input type="checkbox"/> Blank leaves added during restoration may<br>appear within the text. Whenever possible, these<br>have been omitted from filming/<br>Il se peut que certaines pages blanches ajoutées<br>lors d'une restauration apparaissent dans le texte,<br>mais, lorsque cela était possible, ces pages n'ont<br>pas été filmées. | <input type="checkbox"/> Pages wholly or partially obscured by errata<br>slips, tissues, etc., have been refilmed to<br>ensure the best possible image/<br>Les pages totalement ou partiellement<br>obscurcies par un feuillet d'errata, une pelure,<br>etc., ont été filmées à nouveau de façon à<br>obtenir la meilleure image possible. |
| <input checked="" type="checkbox"/> Additional comments:<br>Commentaires supplémentaires:  | [Printed ephemera] 1 sheet (verso blank)   |

This item is filmed at the reduction ratio checked below/  
Ce document est filmé au taux de réduction indiqué ci-dessous.

10X	12X	14X	16X	18X	20X	22X	24X	26X	28X	30X	32X
			/								

The copy filmed here has been reproduced thanks to the generosity of:

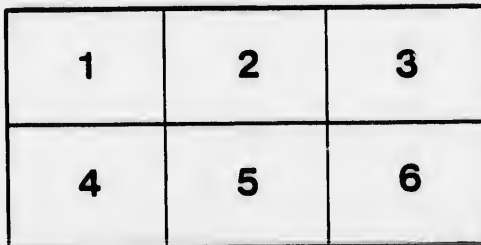
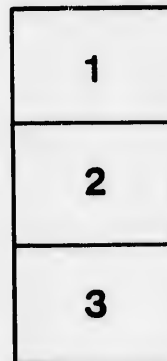
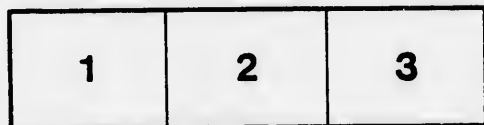
D. B. Weldon Library  
University of Western Ontario  
(Regional History Room)

The images appearing here are the best quality possible considering the condition and legibility of the original copy and in keeping with the filming contract specifications.

Original copies in printed paper covers are filmed beginning with the front cover and ending on the last page with a printed or illustrated impression, or the back cover when appropriate. All other original copies are filmed beginning on the first page with a printed or illustrated impression, and ending on the last page with a printed or illustrated impression.

The last recorded frame on each microfiche shall contain the symbol  $\rightarrow$  (meaning "CONTINUED"), or the symbol  $\nabla$  (meaning "END"), whichever applies.

Maps, plates, charts, etc., may be filmed at different reduction ratios. Those too large to be entirely included in one exposure are filmed beginning in the upper left hand corner, left to right and top to bottom, as many frames as required. The following diagrams illustrate the method:



L'exemplaire filmé fut reproduit grâce à la générosité de:

D. B. Weldon Library  
University of Western Ontario  
(Regional History Room)

Les images suivantes ont été reproduites avec le plus grand soin, compte tenu de la condition et de la netteté de l'exemplaire filmé, et en conformité avec les conditions du contrat de filmage.

Les exemplaires originaux dont la couverture en papier est imprimée sont filmés en commençant par le premier plat et en terminant soit par la dernière page qui comporte une empreinte d'impression ou d'illustration, soit par le second plat, selon le cas. Tous les autres exemplaires originaux sont filmés en commençant par la première page qui comporte une empreinte d'impression ou d'illustration et en terminant par la dernière page qui comporte une telle empreinte.

Un des symboles suivants apparaîtra sur la dernière image de chaque microfiche, selon le cas: le symbole  $\rightarrow$  signifie "A SUIVRE", le symbole  $\nabla$  signifie "FIN".

Les cartes, planches, tableaux, etc., peuvent être filmés à des taux de réduction différents. Lorsque le document est trop grand pour être reproduit en un seul cliché, il est filmé à partir de l'angle supérieur gauche, de gauche à droite, et de haut en bas, en prenant le nombre d'images nécessaire. Les diagrammes suivants illustrent la méthode.

**ABSTRACT STATE**  
**OF DISBURSEMENTS MADE ON**  
**TALBOT DI**  
**FROM 26th MAY 1838, TO**

May 26,	To paid Luke Kendale, on account of maintenance of Eliza Matthews, (insane woman.)	£ 7 10 0	1838. May 26,
"	" Duncan Campbell, Esq., postage on letters to and from John Harris, Esq., on District business.	0 3 6	Nov. 28.
Nov. 28.	" " D. Macpherson for necessaries to inter E. Matthews,	0 3 10 $\frac{1}{2}$	Jan 19, 1839.
"	" " For coffin for do.	0 18 9	
1839.	" " For digging grave, &c., for do.	0 7 6	
Jan. 19.	" " Luke Kendale balance for boarding E. Matthews,	13 8 9	
"	" " Kelly & Polden, for making irons for prisoners sent to Provincial Penitentiary, Kingston, in 1838.	2 10 0	
"	" " Hunt & Burr for stopper for flue of Court House.	0 1 3	
"	" " Isaac Powell for services as constable.	0 3 11	
"	" " Finlay & McGill for Iron for making chains for prisoners.	0 11 8	
"	" " For nine wolf scalp certificates, as per vouchers.	13 10 0	
"	" " H. V. A. Rapelje, Esq., for postage paid by him on letters enclosing collection rolls, sent down from London U. C.	0 18 9	
"	" " A. A. Rapelje, Esq., expenses holding	2 15 0	1837.
"	" " H. V. A. Ranelie. Esq.. for postage paid		

# STATEMENT

MADE ON ACCOUNT OF THE

# DISTRICT,

1838, TO 1st APRIL 1839.

1838.	To amount disbursed for judicial expenses from 26th May, 1838, to 1st April, 1839,						
May 26,	“	“	Henry V. A. Rapelje, Sheriff expences taking prisoners to Provincial Peni- tentiary, Kingston, in 1838.	40	0	0	
Nov. 28.	“	“	John Hambridge, Gaoler, for necessa- ries for prisoners.	12	10	0	
Jan 19, 1839	“	“	Henry V. A. Rapelje, Esq., on account of services as Sheriff.	40	0	0	
	“	“	John Hambridge, Gaoler, for provisions for prisoners.	12	10	0	
	“	“	D. Macpherson for articles furnished for gaol in 1838.	12	0	8	
	“	“	Obed M. Smith, for services as consta- ble in 1838.	0	7	2	
	“	“	G. F. Force for do. do. do.	0	7	6	
	“	“	B. W. Sullivan, for do. do. do.	0	10	0	
	“	“	Amos King, for do do do	0	7	5	
	“	“	Joseph Cordy, for do do do	2	12	0	
	“	“	W. B. Lloyd, for do do do	6	19	8	
	“	“	Cyrus Gibbs, for do do do	2	12	7	
	“	“	John Smith, for do do do	0	10	10	
	To amount paid on account of the erection of the Court-House and Gaol in the Talbot District.						
1837.	“	“	William Wilson, Esq., on account of his contract for building Court-House				

To amount paid on account of the erection of

“	“	H. V. A. Rapelje, Esq., for postage paid by him on letters enclosing collection rolls, sent down from London U. C.	0 18 9	
“	“	A. A. Rapelje, Esq., expenses holding election in 1838.	2 15 0	1837.
“	“	David Duncombe, Esq., wages for attending session of Parliament in 1838.	43 0 0	
“	“	Fees to the Clerks of the following Townships, for 1838, viz :—		1838.
		John Trayer, Walsingham,	4 0 0	
		John Greene, Townsend,	4 0 0	
		John Park, Woodhouse,	4 0 0	1839.
		Gabriel Cullver, Windham,	4 0 0	
		John Skinner, Middleton,	4 0 0	
		John Bell, Charlotteville,	4 0 0	
“	“	Assessors of the following Townships for 1838.		
		Walsingham,	3 10 10 $\frac{1}{2}$	
		Charlotteville,	7 0 0	
		Woodhouse,	6 19 7 $\frac{1}{2}$	
		Middleton, 1 10 9, Windham, 4 15 0,	6 5 9	
“	“	Robert Waddle for absentees, Woodhouse, 1838.	2 3 0	1837
“	“	William Walker for do., Townsend, 1838.	5 19 3	
“	“	John Gilbert for do. for Middleton, 1838.	0 19 3	
“	“	John Killmaster for do. for Walsingham, 1838.	0 6 10 $\frac{1}{2}$	1838
“	“	Fees to the following collectors of the undermentioned Townships, for the year 1838, viz :—		
		Woodhouse, -	9 2 1 $\frac{1}{2}$	
		Charlotteville, -	8 17 9	
		Walsingham, -	4 8 7 $\frac{1}{2}$	

A true Copy,

WM. M. WILSON,

Clerk Peace, Talbot District.

Audited and



To amount paid on account of the erection of the Court-House and Gaol in the Talbot District.

1837.	“ “	William Wilson, Esq., on account of his contract for building Court-House and Gaol at Simcoe,	-	1095	5	0
	“ “	William Wilson, Esq., for plan of Court-House and Gaol,		6	15	0
1838.	“	Interest on debentures issued for District loan, under authority of seventh William 4th,		52	12	0
1839.	“	Paid principal of Debentures No. 2 & 3, for said loan,	-	200	0	0
	“	Paid part principal of Debenture No. 4,		50	0	0
				<hr/>		
				£ 1701 15 10½		

Amounting in the whole, to the sum of one thousand, seven hundred and one pound, fifteen shillings and ten pence half-penny.

**Statement of amount received from every source.**

1837.	By amount of loan under authority of Wm. IV.	£ 1087	17	6	
	“ Proceeds of sale of walls of old Court House.	-	76	5 0	
	“ Part proceeds of sale of site of do. do.		13	0 0	
1838.	To amount received from the different collectors of taxes.	-	739	19 10	
				<hr/>	
				£ 1917 2 4	

Amounting in the whole to one thousand, nine hundred and seventeen pounds, two shillings and four pence; leaving in the Treasurer's hands a balance of two hundred and fifteen pounds, six shillings and five pence half-penny.

**HENRY WEBSTER,**  
*Treasurer, Talbot District.*

Audited and Approved in open Sessions, 10th April, 1839.

(Signed) **JOHN MACKELCAN,**  
Chairman of Committee of Accounts.



