

**CIHM  
Microfiche  
Series  
(Monographs)**

**ICMH  
Collection de  
microfiches  
(monographies)**



**Canadian Institute for Historical Microreproductions / Institut canadien de microreproductions historiques**

**© 1995**

## Technical and Bibliographic Notes / Notes technique et bibliographiques

The Institute has attempted to obtain the best original copy available for filming. Features of this copy which may be bibliographically unique, which may alter any of the images in the reproduction, or which may significantly change the usual method of filming are checked below.

- Coloured covers / Couverture de couleur
- Covers damaged / Couverture endommagée
- Covers restored and/or laminated / Couverture restaurée et/ou pelliculée
- Cover title missing / Le titre de couverture manque
- Coloured maps / Cartes géographiques en couleur
- Coloured ink (i.e. other than blue or black) / Encre de couleur (i.e. autre que bleue ou noire)
- Coloured plates end/or illustrations / Planches et/ou illustrations en couleur
- Bound with other material / Relié avec d'autres documents
- Only edition available / Seule édition disponible
- Tight binding may cause shadows or distortion along interior margin / Le reliure serrée peut causer de l'ombre ou de la distorsion le long de la marge intérieure.
- Blank leaves added during restorations may appear within the text. Whenever possible, these have been omitted from filming / Il se peut que certaines pages blanches ajoutées lors d'une restauration apparaissent dans le texte, mais, lorsque cela était possible, ces pages n'ont pas été filmées.
- Additional comments / Commentaires supplémentaires:

L'Institut a microfilmé le meilleur exemplaire qu'il lui a été possible de se procurer. Les détails de cet exemplaire qui sont peut-être uniques du point de vue bibliographique, qui peuvent modifier une image reproduite, ou qui peuvent exiger une modifications dans la méthode normale de filmage sont indiqués ci-dessous.

- Coloured pages / Pages de couleur
- Pages damaged / Pages endommagées
- Pages restored end/or laminated / Pages restaurées et/ou pelliculées
- Pages discoloured, stained or foxed / Pages décolorées, tachetées ou piquées
- Pages detached / Pages détachées
- Showthrough / Transparence
- Quality of print varies / Qualité inégale de l'impression
- Includes supplementary material / Comprend du matériel supplémentaire
- Pages wholly or partially obscured by errata slips, tissues, etc., have been refilmed to ensure the best possible image / Les pages totalement ou partiellement obscurcies par un feuillet d'errata, une pelure, etc., ont été filmées à nouveau de façon à obtenir le meilleure image possible.
- Opposing pages with varying colouration or discolourations are filmed twice to ensure the best possible image / Les pages s'opposent ayant des colorations variables ou des décolorations sont filmées deux fois afin d'obtenir la meilleure image possible.

This item is filmed at the reduction ratio checked below/

Ce document est filmé au taux de réduction indiqué ci-dessous.

	10X		14X		18X		22X		26X		30X
	12X		16X		20X		24X		28X		32X

(Note: A checkmark is present in the 16X column.)

The copy filmed here has been reproduced thanks to the generosity of:

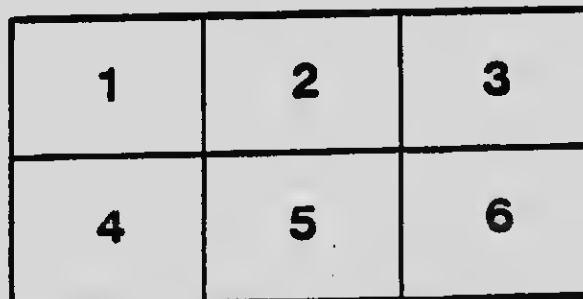
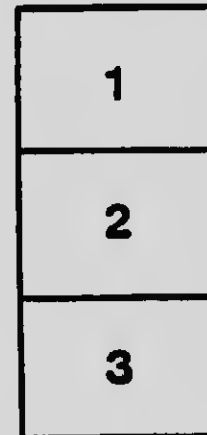
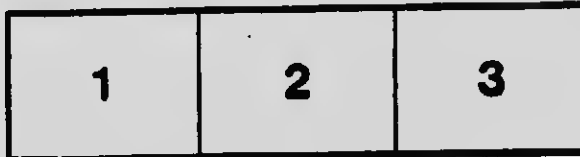
National Library of Canada

The images appearing here are the best quality possible considering the condition and legibility of the original copy and in keeping with the filming contract specifications.

Original copies in printed paper covers are filmed beginning with the front cover and ending on the last page with a printed or illustrated impression, or the back cover when appropriate. All other original copies are filmed beginning on the first page with a printed or illustrated impression, and ending on the last page with a printed or illustrated impression.

The last recorded frame on each microfiche shall contain the symbol  $\rightarrow$  (meaning "CONTINUED"), or the symbol  $\nabla$  (meaning "END"), whichever applies.

Maps, plates, charts, etc., may be filmed at different reduction ratios. Those too large to be entirely included in one exposure are filmed beginning in the upper left hand corner, left to right and top to bottom, as many frames as required. The following diagrams illustrate the method:



L'exemplaire filmé fut reproduit grâce à la générosité de:

Bibliothèque nationale du Canada

Les images suivantes ont été reproduites avec le plus grand soin, compte tenu de la condition et de la netteté de l'exemplaire filmé, et en conformité avec les conditions du contrat de filmage.

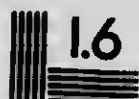
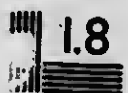
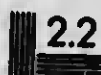
Les exemplaires originaux dont la couverture en papier est imprimée sont filmés en commençant par le premier plat et en terminant soit par la dernière page qui comporte une empreinte d'impression ou d'illustration, soit par le second plat, selon le cas. Tous les autres exemplaires originaux sont filmés en commençant par la première page qui comporte une empreinte d'impression ou d'illustration et en terminant par la dernière page qui comporte une telle empreinte.

Un des symboles suivants apparaîtra sur la dernière image de chaque microfiche, selon le cas: le symbole  $\rightarrow$  signifie "A SUIVRE", le symbole  $\nabla$  signifie "FIN".

Les cartes, planches, tableaux, etc., peuvent être filmés à des taux de réduction différents. Lorsque le document est trop grand pour être reproduit en un seul cliché, il est filmé à partir de l'angle supérieur gauche, de gauche à droite, et de haut en bas, en prenant le nombre d'images nécessaire. Les diagrammes suivants illustrent la méthode.

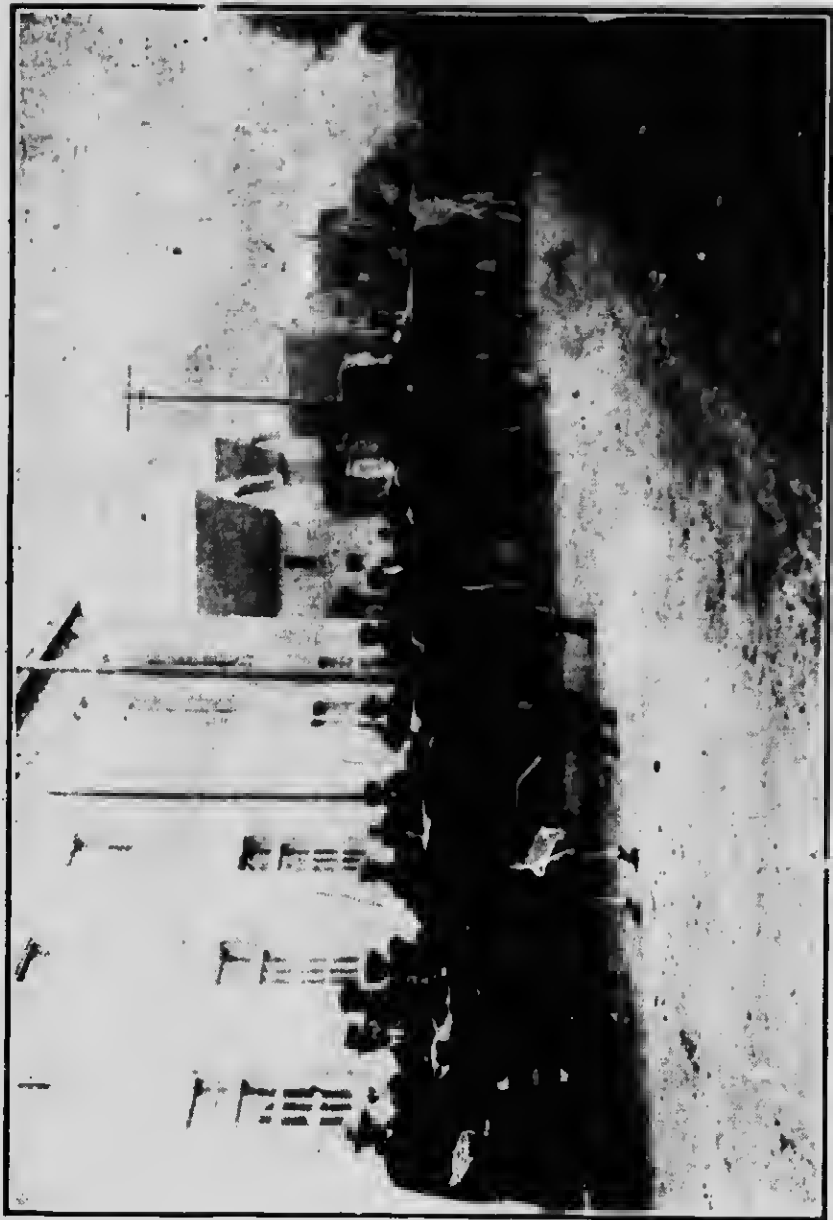
# MICROCOPY RESOLUTION TEST CHART

(ANSI and ISO TEST CHART No. 2)



**APPLIED IMAGE Inc**

1653 East Main Street  
Rochester, New York 14609 USA  
(716) 482 - 0300 - Phone  
(716) 288 - 5989 - Fax



One of the greatest Calf Shows in America is held Annually at the Manitoba Winter Fair Brandon. The calves are shown by boys who have raised and exhibited them. Each year about 50 or 60 boys exhibit calves.

# Opportunities in Manitoba

1920

Containing Extracts from  
Heaton's Annual  
(See next page)



**The Canadian Provincial Booklets**  
(For free copies see over)

*Printed in Canada*

Copyright by Ernest Heaton, Toronto, 1920

# Heaton's Standard Publications

**THE CANADIAN PROVINCIAL BOOK-LETS** are published and revised to date for the Canadian Provincial Governments, are absolutely reliable, contain no unnecessary words, have been designed to fit easily into a pocket or an envelope, can be mailed with ordinary correspondence and give precisely the information wanted by intending settlers, travellers, investors, manufacturers and others who wish to extend their business. *Together they form the only uniform series of publications covering each Province in Canada.*

## APPLY FOR FREE COPIES

To the Agents of the Provinces in London or to the Minister of Agriculture of each Province as follows:

<i>Heaton's Alberta Booklet . . . . .</i>	<i>at Edmonton, Alta.</i>
<i>" Brit. Columbia Booklet "</i>	<i>Victoria, B.C.</i>
<i>" New Brunswick Booklet "</i>	<i>Fredericton, N.B.</i>
<i>" Nova Scotia Booklet . . . "</i>	<i>Halifax, N.S.</i>
<i>" Ontario Booklet . . . . .</i>	<i>Toronto, Ont.</i>
<i>" Pr. Ed. Island Booklet "</i>	<i>Charlottetown, P.E.I.</i>
<i>" Quebec Booklet . . . . .</i>	<i>Quebec, Que.</i>
<i>" Saskatchewan Booklet. . .</i>	<i>Regina, Sask.</i>

For Heaton's Manitoba Booklet write to the  
Immigration and Colonization Branch  
439 Main St., Winnipeg, Man.

**Heaton's Annual**, The Reference Book of Canada,  
covers all Provinces. Price \$2.00.

**Heaton's Agency, Toronto, Canada**

Copyright by Ernest Heaton  
Toronto, 1920

# Opportunities in Manitoba

## General Information

**AREA AND PHYSICAL FEATURES.—AREA.** Total area of Manitoba to-day is 251,832 sq. miles. In 1912 the province was extended north-west to the 60th parallel, and eastward to a line drawn from the north-east angle of the original boundaries of the province to the most north-easterly portion of Island Lake, thence north-east to intersect the southern shores of Hudson Bay in longitude 89 degrees. This district is 178,000 sq. miles, i.e., over 104,000 sq. miles larger than the old province of Manitoba. The province is now larger than Germany, Holland and Belgium combined.

**Area Cultivable.** The province, exclusive of the northern area added in 1912, has over 25 million acres of land that can be cultivated to advantage, about 9 million of which is under cultivation. Total acreage under grain was 5,821,864 acres and total grain crop 160,232,487 bushels in 1911. In 1919 total acreage under crops—grains, potatoes, roots and cultivated grasses — was 5,344,318 acres; field crop production, exclusive of animals and animal products, \$162,452,200.

**Lakes.** The larger lakes in the province in order of magnitude are Winnipeg, part, 3,536,000 acres; Manitoba, 1,163,000; Winnipegosis, part, 836,000; Dauphin, 128,000; St. Martin, 80,000; Shoal, 65,000; Swan, 54,000; Water-hen, 53,000; Dog, 41,000; Lake of the Woods, part, 38,200; Ebb and Flow, 25,000 acres.

**Mountains.** The mountain elevations are the Porcupine, the Duck and the Riding Ridges in the west; the Turtle and the Tiger Hills in the south. The highest point in Manitoba is in the Porcupine Mountains, 2,500 feet.

**Northern Manitoba.** The district added to Manitoba in 1912 contains Port Nelson, the ocean terminus of the Hudson Bay Railway, which is nearing completion. It is practically unexplored, but is known to contain large areas of good farming land where grain and vegetables do well, and which should provide large tracts of pasture. It also has much merchantable timber, pulp wood, rich fisheries, and an abundance of fur-bearing animals. Valuable discoveries of gold and copper are being developed.



## GENERAL INFORMATION.

**Rivers.** The rivers all run from the eastern and western sides of the province to the lower levels in the middle, draining into Hudson Bay. The principal rivers are: Red, Assiniboine, Winnipeg, Pembina, all having several tributaries.

**CLIMATE** Climate conditions are uniform throughout the province. There is much sunshine. Summers are warm. Winter starts suddenly in November or December. The cold is steady, with a clear, dry atmosphere. Snow on the prairie averages 1 ft. deep. Chief rainfall is in June and July.

**Temperature and Rainfall.** According to the table compiled for Heaton's Annual by the Meteorological Office at Toronto, the mean annual temperature and average annual precipitation at different points is as follows:

	Temperature	Rainfall
Brandon.....	33.5	15
Channel Island.....	30.9	17
Dauphin.....	34.6	17
Eikhorn.....	34.6	17
Hillview.....	31.1	20
Minnedoca.....	34.1	17
Morden.....	36.9	19
Portage la Prairie.....	35.2	17
Sourisford.....	33.0	14
St. Albans.....	31.4	17
Treherne.....	34.9	17
Winnipeg.....	38.8	22

**EDUCATION.—PUBLIC SCHOOLS.** A school district may be formed as soon as there are ten children of school age in a section. The government grant to public schools consists of 75c. per day for 200 days' operation each year, and the municipal grant is \$1.20 per day for the same period. In 1919 the attendance at the public schools was 114,662.

**Consolidated Public Schools.** About 15% of the rural territory in the Province has been consolidated, and the children are conveyed to the schools from their homes in this area. Greater efficiency is secured by this method.

**School Gardens, Fairs, Etc.** 50% of the Schools have gardens. Over 200 school fairs are held annually when boys and girls compete in tests in agriculture and economic subjects, including practical woodworking, growing fodder, corn and potatoes, raising pigs and poultry, bread making, sewing, preserving, weed naming, etc.

**Higher Education.** There are in the province 9 collegiate institutes, 6 collegiate departments, 28 high schools, 72 intermediate schools.

**University and Colleges.** The University of Manitoba established by Act of Parliament in 1877, is located at Winnipeg. The University confers degrees in arts, science, engineering, architecture, medicine, law, agriculture and home economics. Instruction is also given in pharmacy and commercial subjects. In 1919-20 the University had upwards of 70 professors, assistant professors and lecturers, 1,460 students. Affiliated with the University are St. Boniface College (Roman Catholic) at St. Boniface, St. John's College (Anglican), Manitoba College (Presbyterian), Wesley College (Methodist), Manitoba Law School and Manitoba Agricultural College—all in Winnipeg.

**Agricultural Education.** For the teaching of Agriculture and Home Economics, the Province of Manitoba has provided buildings and equipment not surpassed anywhere on the continent. The regular courses are given in the winter when the young men and young women can get away from the farm. A student may take a one-year course, a two-year course, or a five-year course. The University of Manitoba confers the degree of Bachelor of Science in Agriculture on young men who have completed the five-year course in Agriculture, and the degree in Home Economics on young women who have completed the five courses in Household Science. The great majority of the students, however, enter for a two-year course and receive the College Diploma. The winter session opens at the middle of October and ends on March 31st. The fees for one winter at the College are \$30.00, board and room in College residence, \$5.00 per week. Any student over 16 years of age may enter, if he can read and write, and understands the English language. Special classes are provided for those who are not able to take a full year's work. During the summer the College puts on short courses for those who are not able to get away at that season. The College staff, too, assists in extension work throughout the province. The Manitoba Agricultural College Calendar will give full particulars of the courses offered, and time of opening.

**AGRICULTURAL TRAINS.** In connection with the Manitoba Agricultural College the province has established a system of agricultural trains, equipped with a special staff of instructors and lecturers, which are run over practically every line in the province.

**Private Schools.**—*At Winnipeg*—St. John's College School. 160 boys. Headmaster, Walter Burman—Rupert's Land College. 200 girls. Principal, Miss E. L. Jones—St. Mary's Academy. 400 girls. Principal, Sister M. Theodore. *At Brandon*—Brandon College.



Wild Duck and Geese are plentiful in Manitoba.  
See Sport, page 11

169 boys and men, 221 girls and young women. President, H. P. Whidden. *At St. Boniface*—St. Boniface College (R.C.). 350 boys. Principal, Rev. H. Bourgue, S. J.

**Technical Education.**—Special mention should be made of the Kelvin Technical School and St. John's Technical School at Winnipeg.

**FISHERIES.** The total value of Manitoba fisheries in year ending March, 1918, was \$1,390,002. To this total Lake Winnipeg and Lake Winnipegosis were the chief contributors. The catch included whitefish, \$890,321; pickerel, \$345,179; tullibee, \$262,230; pike, \$208,846; also perch, trout, bass, catfish, goldeyes, etc. Fish caught through the ice are instantly frozen to death and teamed by traction engines and dog teams from the northern lakes to the railways. The catch is shipped in large quantities to the United States. In New Manitoba the lakes and rivers will yield a big harvest of fish when the country is opened up.

**GOLDEYES.** A true fresh water herring, found in the waters of Manitoba, is a delicious table fish, very popular in Winnipeg, fresh or smoked.

**Hudson Bay Fisheries.** Whitefish and the ordinary river trout have sea-going habits and are caught along the shore in nets. The Arctic salmon is very abundant in some places, but is not found west of the rivers flowing into Ungava Bay. Cod appear to have the same limit. At Fort Churchill white whales are caught in huge nets. The blubber is fed to the dogs. Pike, doré, goldeyes, whitefish and suckers are caught in the lake expansions.

**FORESTS.** West of the Red River in Southern Manitoba there are several bill districts that still have a quantity of standing timber. These have been set aside as Dominion Government forest reserves, and are known as Turtle Mountain Reserve, 69,920 acres; Spruce Woods Reserve, 143,680 acres; Porcupine Reserve, 759,040 acres; Duck Mountain Reserve, 987,680 acres. These tracts of land rise from 300 to 1,000 ft. above the plains. On the upper plateau are spruce, jackpine and tamarack; in the lower plateau, poplar and white birch; and in the coulees, elm, oak, ash and poplar. In Southern Manitoba, in the river valleys, are a few elm, oak, basswood and white pine.

**Principal Trees.** The principal trees in order of present importance are: White spruce, black spruce, jackpine, tamarack, balsam fir, aspen or white poplar, cedar, burr oak, paper or white birch, white elm, green ash, white oak, balsam, poplar or balm of Gilead (locally known as black poplar), black ash, basswood, Manitoba maple, cottonwood, red ash, mountain maple. Very

## GENERAL INFORMATION

few of these trees are of present commercial importance. Most of them are potentially important commercially, and all of them are of more or less value locally. Manitoba contains about 1,920,000 of saw timber, or 4 billion ft. B.M.

**FREIGHT RATES** The following table shows the freight rates per 100 lbs. on wheat to Port Arthur from points in Manitoba and from points in the Western Provinces, with the equivalent per acre on a crop of 20 bushels:

Winnipeg, Man.—14c.....	\$1.68 per acre
Boissevain, Man.—17½c.....	2.10 per acre
Brandon, Man.—17½c.....	2.10 per acre
Edmonton, Alta.—30c.....	3.60 per acre
Lethbridge, Alta.—29c.....	3.48 per acre
Battleford, Sask.—29c.....	3.48 per acre

The following figures show the freight rates per 100 lbs on live stock between Western Provinces and Manitoba to Winnipeg Market: Edmonton, Alta., 47c., and Virden Man., 24c., difference 23c.; Lethbridge, Alta., 50c., and Deioraine, Man., 24½c., difference 25½c.; Calgary, Alta., 51c., and Melita, Man., 24c., difference 26c. This is an important factor in the live stock industry.

**GOVERNMENT.** Manitoba is divided into 49 provincial constituencies. The nominal life of the legislature is five years. In 1918 there were 163 organized municipalities in the province, including cities and towns. A considerable portion of the province in the north and east is as yet without municipal organization, but there is school organization wherever there is sufficient settlement. Under redistribution, following the dissolution of the Dominion Parliament in 1917, Manitoba has fifteen members in the Dominion Parliament.

**HUDSON BAY ROUTE.** From various expert opinions, optimistic and the reverse, it may be concluded that the route is open for navigation from about the 15th July to about 15th Oct. The C.N.R. line runs from Winnipeg to The Pas on the Saskatchewan River. From there the Dominion Government is building a line to Port Nelson, 424 miles; steel is laid to the second crossing of Nelson River at Kettle Rapids, and the line is operated to Piquitenay, mileage 214; train leaves the Pas every second Wednesday. This route will effect an average saving of 970 miles on the distance from the Western wheat fields to the Atlantic seaboard. Work is being actively prosecuted on the harbor at Nelson. Write for latest publications to Commissioner of Publicity, Manitoba Government, Winnipeg.

**MINING—Building Stone.** Limestone for building purposes is extensively quarried at Tyndall, and at Stonewall, Stony Mountain, Rockspur and Gunton, from 12 to 25 miles north of Winnipeg. This stone is also calcined for the manufacture of lime. Granite is quarried on east shore of Lake Winnipeg. Sandstone is quarried on the shores and islands of Lake Winnipeg and in the Turtle Mountain district, near Boissevain and Deloraine. A bluish and whitish anhydrite occurs near Gypsumville, in the North. Marble of high grade is found on Marble Island in Hudson Bay and at Churchill.

**Clay Products.** Good brick clays in unlimited quantity are obtainable from the shales of the Pierre series. Bricks are manufactured at 16 points, sand lime bricks at Winnipeg, Brandon and Beausejour. A semi-refractory shale occurs in Turtle Mountain, La Riviere and near Virden.

**Cement.** A natural cement is manufactured at Bahcock, s.e. of Winnipeg. Cement materials are found east of Lake Winnipeg and near Arnold. Limestone is quarried at Steep Rock, near Lake Manitoba, by Canada Cement Co., for Portland cement.

**Coal.** Several seams of lignite or brown coal underlie the northern flank of Turtle Mt. in the south-western part of the province, work has been done at several points, but no active mining has been undertaken. A new system of briquetting has been evolved by the Lignite Utilization Board of Canada, and the first plant will operate in 1920. A briquette equal to American anthracite at a reduction in cost of 40% is expected.

**Copper.** High grade and very extensive copper sulphide deposits have been discovered north of The Pas, at Schist Lake, and the district is on the eve of very great development. The Tonopah Mining Co. has mined copper sulphide which has returned high profits after hauling by teams in to The Pas and transporting to Trail, B.C., for treatment. At Flin Flon Lake enormous deposits have been blocked out. Values of zinc and lead occur in this ore body. This country has recently been examined by some of the foremost mining engineers of America, who report it to show every evidence of exceeding richness.

**Gold.** Large sulphite ore bodies at Flin Flon Lake and Schist Lake contain good values in gold and the extent of the ore bodies are such that mining is to be undertaken on a very large scale. Many other prospects await only the opening up of transportation. On Herb Lake, about 95 miles from The Pas on the line of the Hudson Bay Railway, rich free milling gold has been

## GENERAL INFORMATION

located and there has already been considerable activity. One large mine was working in 1918, the machinery having been shipped in by the Mines Explorations Syndicate (McKeever Bros., New York). Very promising gold discoveries have also been made in the Rice Lake District on the east side of Lake Winnipeg, and in the Star Lake District, in the south-eastern corner of the province. Extensive development is under way in the Rice Lake District, and gold mining appears to be on the eve of becoming a great industry.

**Gypsum.** Large deposits of gypsum have been found in the townships lying north of Lake St. Martin. The deposits are worked by the Manitoba Gypsum Co., Ltd. The crude gypsum is shipped from the mines (Gypsumville) north of Lake Winnipeg, to the works at Winnipeg, whence the crushed gypsum is supplied to cement factories; the calcined product is manufactured into wall plaster, hollow tiles, etc.

**Iron.** Large deposits of iron ore have been determined in the Lake Winnipeg district and in the country east of that lake.

**Molybdenum.** Extensive deposits found at Falcon Lake and Grass River promise large results as development proceeds.

**Natural Gas** has been obtained from several borings, in Southern Manitoba. Investigations are being carried on at Manitou.

**Peat.** A number of bogs have been examined and reported upon by the Dominion Government. Manitoba bogs contain under 2,000,000 tons of fuel, but one bog can furnish 2,500,000 tons of moss litter. Write to the Department of Mines, Ottawa.

**Salt.** Brine springs of varying strength are found at Salt Point, near the mouth of Bell River and on the Red Deer peninsula in the southern part of Winnipegosis Lake. Of late years no salt has been manufactured.

**Tungsten.** Has been found in S.E. Manitoba, near the Ontario boundary.

**Zinc and Lead.** Values of Zinc and Lead occur in the copper sulphide deposits at Schist Lake and at Flin Flon Lake, north of the Pas.

**POPULATION.** According to the Dominion census returns, the population of the province was: In 1881, 62,260; in 1891, 152,506; in 1901, 255,211; in 1911, 455,614; in 1919 (est.) 619,000. Between 1901 and 1911 the rural population increased 70,511; the urban, 129,892.

**RELIGIONS.** In 1911 there were in Manitoba 86,578 Anglicans, 13,792 Baptists, 2,997 Congregationalists, 31,042 Greek Church; 10,636 Jews, 32,730 Lutherans, 15,600 Mennonites, 65,897 Methodists, 103,621 Presbyterians, 73,994 Roman Catholics.

**NATIONALITIES.** In 1911 the chief nationalities represented were: British, 266,415; French, 30,944; German, 34,530; Austro-Hungarian, 39,665; Belgian, 2,453; Dutch, 2,853; Indian, 7,876; Italian, 16,277; Jewish, 10,741; Polish, 12,310; Russian, 7,761; Scandinavian, 16,419. Only 36 per cent. were native to the province.

**RAILWAY TRANSPORTATION.** Manitoba had 3,221 miles of railway in 1910, 4,467 miles in 1919. It is crossed by three transcontinental lines: the Canadian National Railways, C.P.R., and G.T.P. The Midland and the Manitoba Great Northern railways also serve the communities of the Province.

**SPORT.** The black bear is common in wooded parts, Coyotes are abundant generally. Virginia, or white deer are found across Northern Manitoba, weight about 300 lbs. Mule deer are only occasionally found in the province, average weight 275 lbs. Antelope, at one time common, are no longer found in Manitoba. Wapiti, or elk, found in the north-western and central portions of the province, are said to be more numerous now than at any time during the past fifty years. The full-grown buck weighs 600 lbs. and occasionally over 1,000 lbs. The woodland caribou is found in wooded districts in the north-easterly portion. It is intermediate in size between the elk and the white tail deer. Lynx and wild cat are found throughout the wooded parts. Foxes are abundant. Wolves are common. Beaver are increasing annually. The Canadian goose, the North or Brant goose and the Wavy or White goose are the most common breeds. Of duck, mallard, canvas-back, wild-geon, teal, blue hill, red head, merganser, and spoon bill are found in White Water Lake, White Mud Lake, Plum Lake, Maple Lake, Oak Lake, Lake Manitoba and Lake Winnipeg, as well as other water. Prairie chicken are common. Partridge (wood grouse) are found in the wooded districts. About Hudson Bay and the North large herds of the barren ground caribou are met.

**TAXATION OF LAND.** Assessment of farm lands is on the value of the land only. Improvements of all kinds are exempt. The straight land tax payable to his municipality is the only tax to which a Manitoba farmer is subject.

**UNOCCUPIED LAND TAX, 1918,** provides for a tax on unoccupied lands of  $\frac{1}{2}$  of 1 per cent. of the assessed value.



**GENERAL INFORMATION**

except in specified cases which are exempt. No land shall be taxed under this Act at a rate higher than 20 cents per acre.

**TELEPHONES.** The telephone system of the whole province, both urban and rural, including long distance lines, has been owned and operated since 1908 by the province under a Telephone Commission responsible directly to the Government. An active policy of extension, particularly of rural lines, has been carried on. The last annual statement of the commission shows a total of 48,021 subscribers, of which 33,388 are local (including Winnipeg) and 12,733 are rural. The telephones in Winnipeg average 11.1 per 100 of population and in the rest of the province 8.2 per 100.

**WAGES.** Agricultural Laborers, under war conditions, received from \$60 to \$65 per month, with board in the summer months; \$30 to \$40 in winter. In harvest time skilled harvest men receive \$4.00 per day and for threshing \$5.00 per day, subject to deduction on account of wet weather. Few engage by the month during harvest time.

**General Laborers,** 45c per hour, 54 hours per week.

**Lumbermen,** in logging camps, \$60 to \$65 a month, with board.

**Mechanics.** The fair wage schedule of the Provincial Government for Winnipeg is as follows: Bricklayers, \$1 per hour, 44 hours; plasterers, 90c. per hour, 44 hours; carpenters, 75c. per hour, 44 hours; sheet metal workers, 73½c. per hour, 44 hours. Wages for tailors are as follows: Coat makers, \$35 per week; pants and vest makers, \$18 to \$20 per week. Compositors in news offices have a minimum week of 46 hours for day work and 43½ for night, the rate being \$35.50 for day work and \$38.50 for night work. Job offices have a minimum week of 48 hours and a wage rate of \$35.

**Domestics.** Cook, general, \$35 to \$50 per month, with board and lodging.

---

## Agriculture

**MANITOBA'S FERTILE SOIL.** *Manitoba has a soil unsurpassed anywhere for fertility, and climatic conditions combine to make it pre-eminent not only in grain growing, but in mixed farming of all kinds, including the raising of live stock. Proof of the fertility of soil has been evident from winnings each year at the International Soil Products Exhibition. At this exhibition at Kansas City, Mo., in September, 1919, Manitoba entries won 7 trophies, 35 first prizes, 25 second prizes, 22 third prizes. Among the championships captured were the world's championship for collection of vegetables; world's championship for collection of small grains; world's championship for most attractive exhibit; second trophy for most comprehensive exhibit. Two Manitoba farmers won the first and second prizes, respectively, as having best individual exhibits in the dry-farming section. Very similar results were attained in 1918.*

**BEEKEEPING.** Manitoba is fast becoming one of the leading beekeeping provinces of the Dominion, due to the plentiful growth of honey-producing flora, coupled with abundant sunshine, which allows the bees to gather freely. Honey crop reports for 1919 show an average of about 90 lbs. per colony; in some instances as much as 300 lbs. being gathered by one hive of bees. Bee diseases are now practically stamped out, which should do much to increase the production of honey. Farmers and others are going in for beekeeping quite extensively and in many parts of the province large apiaries are to be found where many tons of honey are produced annually. The market for honey at present, is good, as Manitoba honey is very high in quality compared with that shipped in from outside points. The honey crop marketed in 1919 averaged about 90 lbs. per hive, a total of 900,000 lbs., which sold at an average of 30 cts. per lb.

**DAIRYING.** The dairy industry is expanding. Export is increasing very fast, as Manitoba butter is earning a fine reputation and is demanded in British Columbia, Western Ontario and Quebec. Total value of dairying products in 1919 was \$16,789,000.

**Butter.** In 1919 the output of creamery butter was 8,256,711 lbs., value \$4,458,623; average price per lb. 54 cts.; Dairy butter, 10,804,225 lbs.; value \$4,753,859, average price per lb., 44 cts. There are 44 creameries. Manitoba creamery butter won the highest score during 1918 and 1919 at the Canadian National Exposition, Toronto.



In 1918, some farmers fed good grade steers for short periods with much profit.  
See Live Stock on page 17.

**Cheese.** In 1919 the output of 16 cheese factories was 679,855 lbs.; value, \$179,481; average price 26.4 cts. per lb.

**Milk and Cream.** In 1919 the output of milk was 150,625,021 lbs.; value \$5,874,375; average price per lb., 3.9 cts. Sweet cream, 2,457,342 lbs.; value, \$1,523,552; average price 62 cts. per lb.

**FLAX.** Though flax succeeds in Manitoba it is not so popular a crop as wheat and oats. During 1918 there was a considerably increased interest in flax growing, owing to war conditions, and the acreage of that year was 106,635 acres. This fell in 1919 to 55,679, which is less than the average area for recent years. The average yield for ten years is 11.1 bus. per acre. Much of the flax is grown upon land newly broken from the prairie.

**Linseed.** In the Prairie provinces flax is at present grown for seed only, which is purchased by the Linseed Oil Mills in Canada and the United States. The Dominion Government estimates place the flax seed crop of Manitoba for 1919 at an average valuation of \$39.61 per acre.

**Fibre Manufacture.** The fibre is too short and of too poor a quality to be worked with profit by the old process; but efforts are being made to find some profitable means of extracting the fibre from the waste material. It is claimed that by the Feuillette Retting process, Western flax can be economically treated and manufactured into coarse fibre. The Flax Fibre Development Association, Head Office at Regina, was organized in 1917 to manufacture from flax, without retting, sacking, towelling, binder twine, etc. Write Experimental Farm, Ottawa.

**FODDER CROPS.—Cultivated Grasses.** The leading grasses grown in Manitoba are Western Rye Grass (a native of the province), Awnless Brome Grass, and Timothy. The average hay yield per acre is about 1.7 tons. All make good hay.

**Alfalfa.** Many Manitoba farmers have been very successful in growing alfalfa, in practically all parts of the province, but as yet it is not produced to any great extent. In 1919 only 5,181 acres were devoted to this crop; the average yield was 2.2 tons of hay per acre. The Grimm alfalfa is considered most suitable, though new types are being bred at the Agricultural College.

**Corn.** In the U.S. the northern boundary of the corn belt is steadily moving northward. The Manitoba Agricultural College has tried to secure a corn that will

In 1916, some farmers had seen Live Stock on page 17.

produce fodder and ripe ear corn in Manitoba. "Quebec 18" variety in 1919 ripened 100 bus. of ear corn per acre at the College. In 1919 at the International Soil Products Exhibition at Kansas City, John Hamilton, of Kelwood, Man., secured the first prize for North-western Dent Corn. In 1919, 114,472 tons of fodder corn were grown on 16,867 acres.

**Clover.** Common red and alsike clover do well on well prepared soil without a nurse crop. In 1919 the yield of clover hay was 28,800 tons from 16,327 acres; average 1.7 ton.

**FRUIT GROWING.—Apples.** A. P. Stevenson, the pioneer of the industry has over 40 varieties of apples near Morden, and produces about 200 barrels of apples and crab apples each year. The most successful are the Repka Kaslava, a yellow sweet apple; the Blush Calvil, white with a delicate flush; the Charlemoff, red striped, medium early; Anlsette, a red fall apple; The Hibernial, Austerhoff and Antinofka, winter apples. Apples have also been successfully grown at different points in the Red River Valley, but the industry is not yet large.

**Cherries.** The most successful proven varieties are hybrids of the Wild Sand Cherry, ripening in September. The Wild Sand Cherry bears heavy crops of black fruit of medium quality. The Compass cherry has fruited at several places. An "almost chokeless choke cherry" has been discovered, which promises to be of considerable value.

**Plums.** The native wild plum of Manitoba may be successfully grown anywhere in the province. Though much of this fruit is inferior in quality, some very good strains have been selected from it, and at the Agricultural College a great many of these selected sorts are being propagated. There seems to be a fairly good future for plum growing in Manitoba.

**Small Fruits.** Manitoba produces a great profusion of native small fruit. There are high and low bush cranberries, blue berries, Saskatoon or June berries, strawberries, red and black currants, and gooseberries, all of excellent quality, and some years in very great profusion. Among the most successfully cultivated tame sorts are the June and ever-bearing strawberry, red raspberry and black, white and red currants.

**GRAIN CROPS, 1919.** The yield of the principal grain crops of Manitoba for 1918, estimated from returns as

## AGRICULTURE

17

supplied by the Dominion Bureau of Statistics was as follows:

Field Crops	Acres Sown	Bushels		Total Value
		per Acre	Total Yield	
Wheat.....	2,880,301	14.25	40,975,300	\$78,706,000
Oats.....	1,847,267	31.25	57,692,000	41,420,000
Barley.....	893,947	19.25	17,149,400	20,137,000
Rye.....	298,932	13.75	4,089,400	5,228,000
Peas.....	5,666	14.25	81,400	170,000
Mixed Grains..	30,355	25.00	759,000	1,063,000
Flax.....	57,379	9.00	520,300	2,215,000
Potatoes.....	42,000	126.00	5,287,500	4,266,000
Turnips, etc....	6,045	184.00	1,113,000	663,000
		Tons	Tons	
Hay and clover..	260,378	1.50	401,400	6,818,000
Fodder Corn....	16,867	6.80	114,400	1,520,000
Alfalfa.....	5,181	2.20	11,400	256,200

**HEMP.** Experiments have shown that hemp can be successfully grown in Manitoba. Its chief use is in the rope industry.

**LIVE STOCK.**—The U.S. Food Controller says the dairy product of Europe is 30% and of the Allies 5% below pre-war normal. Official figures show that the dairy herds of Denmark, Great Britain, Belgium and Serbia have decreased 3½ million head. Europe must restock her herds chiefly from this Continent.

**Cattle.** There is an increasing demand for breeding heifers and young steers, known as "stockers," and under a new provincial act which lends assistance to this movement it is rapidly increasing. An immense crop of coarse grains and fodder is easily raised. With a greater supply of help greater attention will be paid to feeding fat cattle. The Manitoba Cattle Breeders' Association holds an annual sale of pure-bred cattle at Brandon. In 1914 there were 498,040 cattle in the province, and by June, 1919, the number had increased to 781,771.

**CHAMPION CATTLE.** Glencarnock, the big Angus steer, declared the Champion of the 1912 International Live Stock Exposition at Chicago, was reared by J. D. McGregor, of Brandon, Man., weight 1,630 lbs. This steer was sold for 50c. per lb. on the hoof. At the 1913 International Live Stock Exhibition Manitoba again captured first honors with Glencarnock Victor II., also reared by Mr. McGregor. At the Dominion Fair, at Brandon, 1913, Manitoba took 1st prize and gold medal for the best 10 beef cattle exhibited by any province.

Lavender 47th, a Shorthorn heifer, reared by J. G. Barron, of Carberry, Man., sold at public auction for \$5,000 during 1919.

**Horses.** The Clydesdale breed predominates, with the Percheron in second place. Manitoba exports work horses to Saskatchewan. In 1909 there were 180,132 horses in the province; in 1919, 379,350. Present prices rule high. A good pair of Clydesdales will bring \$600. Only pure-bred stallions are permitted to stand for public service.

**Sheep.** The sheep industry has increased rapidly during the past five years. Shropshires, Oxfords and Leicesters are popular breeds. Total sheep in province: 167,170 in 1919.

**Wool.** During recent years the Manitoba Department of Agriculture has taken charge of the assembling of wool at Winnipeg, where it has been graded and forwarded in bulk lots to be sold by the Canadian Co-operative Growers, Ltd., a Co-operative Co. of wool growers, the purchase money being distributed by the Department. In 1918 the average price of medium clothing wool was 65c.; of fine clothing wool 60½c. 361,585 lbs. were sold worth over \$200,000.

**Swine.** With the development of mixed farming, more hogs are being raised. In 1919 the number of hogs in the province was estimated at 261,542. The most common breeds are Berks, Yorkshires, Tamworths and Poland Chinas.

**POULTRY.** In 1919 farmers disposed of 75,000 turkeys, 35,000 geese, 1,000,000 chickens, and 40,000 ducks. The estimated value of all these was \$1,135,000. The egg production of 1919 was valued at \$2,000,000.

**Chickens.** Plymouth Rocks, Wyandottes, Rhode Island Reds, Orpingtons and White Leghorns are favorite breeds. The number of hens and chickens in Manitoba in 1919 was estimated at 2,429,908.

**Ducks and Geese.** The Pekin, Rouen and Indian Runner ducks do best. The Embden and Toulouse geese are the most common breeds. The 1919 official estimate shows 61,025 geese and 82,715 ducks in Manitoba.

**Turkeys.** The Mammoth Bronze is most commonly raised. The 1919 figures show 157,518 turkeys in Manitoba.

**VEGETABLES AND ROOTS.** Practically every kind of vegetable does exceedingly well in the black loam of

Manitoba, including cucumbers, squash, citrons, pumpkins and sweet corn. During both 1918 and 1919 Manitoba won the sweepstakes award as having the best provincial or state exhibit of vegetables at the International Soil Products Exposition. Root crops are not largely grown for feed.

**Tomatoes.** Tomatoes ripen beautifully in Winnipeg, yet vast quantities are imported. Many Winnipeg gardeners in 1919 sold over \$1.00 worth of ripe tomatoes per plant.

**Onions.** Onions yield 400 to 700 bushels per acre.

**Potatoes.** Potatoes often yield 200 to 400 bushels per acre. In 1919, which was a very poor potato year, 5,287,480 bushels were grown from 42,000 acres.

**WHEAT.** The ideal temperature for wheat is a mean summer temperature of 60 degrees. This extends as far as latitude 65 degrees. The greatest yield is nearest the northern limit of successful growth. Wheat from Fort Chippewegan at latitude 59 took first prize in Philadelphia in 1876. Wheat from the Peace River Valley took first prize in the World's Columbian Exhibition at Chicago in 1893. In the northern latitudes four and five grains are found to the cluster, as against two grains usual in the wheat fields of the United States. This is due to the winter frosts, summer rains and the soil, of which the chief ingredients are nitrogen, potash and phosphoric acid.

**Spring Wheat.** The leading varieties are Red Fife and Marquis, which grade hard and are known as Manitoba Hard Wheat. They fetch a higher price than any other varieties grown. The Marquis, a recent development, matures about 10 days earlier than Red Fife. Marquis wheat grown either in Manitoba or Saskatchewan has won the world's championship at the International Soil Products Exhibition for several years. Such wheats as the Prelude are earlier than the Marquis, and are intended for growth in the northern areas. So far they have been very little grown.

**Winter Wheat.** Though winter wheat is grown only in negligible quantities, a small amount of it is produced. Most of the fall wheat acreage is in the Swan River Valley, in Northern Manitoba. It is sown in August, and ripens during August. The leading variety is Alberta Red, which was grown originally from Turkey Red Wheat introduced from Kansas.





The high price of Mutton and Wool is stimulating the Sheep Industry. See page 18

## Land Settlement

**IMMIGRANTS.** Are advised to call at the Immigration and Colonization office of the Manitoba Government, at 489 Main St., Winnipeg, for advice as to location and quality of land. Maps and information concerning free homesteads in Manitoba will be furnished on request.

**Homestead Regulations.** The land is surveyed into townships 6 miles square, divided into 36 sections of 640 acres each. Sections 11 and 29 are reserved for school purposes; sections 8 and 26 belong to the Hudson Bay Co. Other sections are available for homesteading. Any person who is sole head of a family, or any male over 18 years old, who is a British subject, or declares his intention to become a British subject, or a widow with minor children of her own dependent on her for support, may, on paying \$10, obtain entry for a quarter section (160 acres more or less) of Dominion Lands in Manitoba. Applicant must appear in person at the Dominion Lands Agency or sub-agency for the district. Entry by proxy may be made at any agency for a husband, father, mother, son, daughter, brother or sister, if eligible, and when duly authorized by the prescribed form. Duties: erection of a habitable house, 6 months' residence and cultivation of land in each of 3 years. A homesteader may live within 9 miles of his homestead on a farm of at least 80 acres, solely owned and occupied by him or by his father, mother, son, daughter, brother or sister, or upon a homestead entered for and occupied by them within the prescribed distance. Before applying for patent, homesteader must break 30 acres and crop 20, part of work being done each year. If residing in vicinity, as stated above, he must break 50 acres and crop 30 acres. Provision is made for reducing the area of cultivation required where the land is reported by the Homestead Inspector to be difficult to break.

**SUBSTITUTION OF STOCK FOR CULTIVATION.** The ownership of live stock may be substituted for cultivation in the case of any homestead, if a report from a Homestead Inspector shows that the quarter section does not contain arable land to the extent required to obtain patent under the regulations with respect to cultivation.

**IMPROVED FARMS.** See Announcements of the Grain Growers' Land Department and Scott & Hill on pages 57 and 58

**ASSISTANCE TO SETTLERS.** The Rural Credit Act has attracted a great deal of attention, and has been eminently successful.

**Manitoba Farm Loans Association.** This Association, created by a Provincial Act in 1917, with an authorized capital of one million dollars—two hundred thousand shares of five dollars each. One-half of the capital to be subscribed by the province, the other half by the homesteaders. The Association is authorized to lend money on first mortgage on improved farms to farmers not exceeding fifty per cent. of the value of the land and improvements. The money must be used: (a) To purchase land for agricultural purposes; (b) To pay off prior encumbrances; (c) To erect buildings or make other improvements; (d) To purchase live stock and machinery; (e) To pay off floating debts incurred prior to the date of application. The principal and interest is spread over a period of thirty years, repayable by an annual fixed payment with principal and interest. Money is loaned at cost, i.e., the rate of interest at which the Government can sell its securities in the open market. To this is added one per cent. to pay the expenses of management and other charges.

**Rural Credits Act, 1917.** Provides for the organization by Manitoba farmers of rural credit societies, through which the individual shareholders of such societies may be enabled to secure short-termed loans for carrying on or extending their farming operations. Such loans will be secured on the crop for the production of which loan is secured, or the live stock, or the machinery bought with the money thus borrowed. The money will be secured from the bank at 6 per cent., and the borrower will be charged 7 per cent., the difference going to pay expenses of this society and augment the guarantee fund.

**BASIS OF ORGANIZATION.** The Provincial Government takes stock to an amount equal to half that subscribed by the members of the society, and the municipality within the boundaries of which the members of the society live and carry on their farming operations, takes stock to the same amount as the Government. The proceeds of this stock forms a guarantee fund as the basis of credit. Application for letters patent may be made by 15 farmers. No society may commence business until 50 farmers have subscribed for \$5,000 stock and 10 per cent. has been paid thereon.

There were in January, 1920, 60 societies with authorized capital of \$1,200,000. In 1919, 38 societies loaned over \$1,000,000.

**FURTHER INFORMATION.** Write the Supervisor, Rural Credit Societies, Parliament Buildings, Winnipeg.

**RETURNED SOLDIERS' FEDERAL SCHEME.** The Soldier Settlement Board of Canada may make advances to qualified returned soldiers settling upon the land, as follows: Up to \$4,500 for the purchase of land; up to \$2,000 for the purchase of live stock and equipment; up to \$1,000 for permanent improvements. Interest 5 per cent. per annum amortized. The loan for stock and equipment is repayable in 4 equal annual instalments beginning the third year, no interest being charged the first two years. The other loans run for 25 years. A cash down payment of 10 per cent. on the purchase of land is required. To qualified settlers on Dominion Crown Lands the Board may loan up to \$3,000 for live stock, implements and permanent improvements; and to those who already own land, up to \$5,000 for the removal of encumbrances, the purchase of live stock and equipment, and the erection of permanent improvements.

**Military Qualification.** Any qualified soldier of the Forces of Canada, Great Britain or the self-governing Dominions who served outside of the country of enlistment or in a theatre of actual war, or any member of an Allied Force, who was resident in Canada at the time of enlistment and served out of Canada in a theatre of actual war is eligible. Imperial ex-service men are, however, required to make a cash down payment for land amounting to 20 per cent.

**Experience Qualification.** The Board provides that applicants who are not fully qualified to farm shall complete training at a Training Centre, equipped by the Board, or with a farmer of good and satisfactory standing. Allowances are paid to Canadians for subsistence during training. The Board has established a Training Centre at Elkhorn.

**District Office.** The District Office of the Board is located at Winnipeg.

## Rural Municipalities

The statistics in these descriptions have been taken from the latest Provincial Government statistical returns; the descriptive matter has been supplied by the official of the rural municipality in each case. For statistical purposes the Province is divided by the Government into crop districts known as the Eastern, North Central, South Central, North Western, and South Western. This division has been followed here.

### Eastern District

- †**ASSINIBOIA.** Area 26,853 acres, 4,556 acres cultivated. Extends 12 miles westerly from Winnipeg city limits and 4 miles north. Land is rolling; soil black loam 8 in., with clay subsoil. Watered by Assiniboine River at southern extremity. Served by Man. S.W. Ry., C.N.R., and G.T.P. Wells from 30 to 130 feet. Mixed farming. A large portion has been subdivided into building lots. Average price (not based on productive value) of improved farms \$200. Electric cars to Headingly village. Pop. 8,451, including English and English and French Canadians.
- †**BIFROST.** Area 529,040 acres, 16,156 acres cultivated. Situate on west side of Lake Winnipeg. Land is flat and marshy; about three-fifths covered with spruce, tamarack, birch and poplar. Stony ridges running north-west and south-east. Soil black loam, 3 to 12 inches on hard, greyish subsoil, stony in parts. Watered by Icelandic River and Lake Winnipeg in east. Served by C.P.R. Teulon branch, C.P.R. Gimli branch, and C.N.R. Rose Isle branch under construction. Government phone to Winnipeg. Local markets at Arborg and Icelandic River. Mixed farming. Wheat averages 20 bush.; oats, 45; barley, 40; flax, 15. Pop. 5,576, including Icelanders, Ruthenians, Hungarians, and Canadians. About 1,000 homesteads available. Price of raw lands per acre, \$7 to \$20; improved, \$10 to \$30.
- BROKENHEAD.** Area 180,480 acres, 33,500 acres cultivated. Land is rolling and good along rivers and near Beausejour, elsewhere sandy or blue clay. Watered by Brokenhead River. Wells 20 to 75 ft. Markets at Winnipeg and Kenora, Ont. Served by C.P.R. main line. Elevator at Beausejour. Mixed farming and grain. Wheat crops of 35 bushels; oats, 80; barley, 45;

†No returns in 1919 from local authorities.

flax 18, are common. Pop. 4,250, including Poles and Austrians. No homesteads available. Price per acre of raw lands, \$25 to \$40; improved, \$50 to \$80.

**CHARLESWOOD.** Area 23,489 acres. 3,500 acres cultivated. Land is flat and dry, largely covered with poplar and scrub oak. Soil 6 in. black loam with clay subsoil. Assiniboine River runs through district parallel with main highway. Fine scenery. Wells average 100 ft. Served by G.T.P.R., C.N.R., C.P.R. and Winnipeg Elec. Ry. Mixed farming and market gardens. Leading products, grain and vegetables. Local market at Winnipeg and district. Pop. 510, British and French Canadian.

**DE SALABERRY.** Area comprises 160,280 acres, 55,045 acres cultivated. Land is flat and dry. Soil black loam, 2 feet deep, especially good land west of C.P.R. Watered by rivers. Wells 50 to 350 ft., good water east of C.P.R. Markets at Dufrost, Carey, Otterburne, St. Pierre and Winnipeg. Served by C.P.R. Mixed farming. Wheat averages 22 hushels; oats, 60; barley, 35; flax, 18. Pop. 2,221, including French Canadians, Americans and English. Price per acre of raw lands, \$20; improved, \$35 to \$40.

**FORT GARRY.** Area 17,198 acres, on w. bank of Red River, adjoining Winnipeg city boundary. La Salle River runs through the village of St. Norbert at south. Soil black clay loam, area cultivated 6,211 acres. Chief products: grains, milk, cheese, honey and vegetables. Local market Winnipeg. Served by C.N.R., C.P.R. and Winnipeg Elec. Ry. The Jefferson Highway, paved with asphalt, connecting Winnipeg with New Orleans, runs through the municipality for 8 miles, with 8 miles of concrete pavements feeding this Highway. Elec. light and power is supplied, and the telephones are connected direct with the Winnipeg exchanges. Manitoba Agricultural College (value of buildings \$2,000,000.00), the Trappists' Monastery (2,000 acres), the Arctic Ice Co. plant (output 40,000 tons), are located in this municipality. Municipality has 3 churches, 1 high school, 3 public schools, county court, 2 banks, 3 post offices. Pop. 1,477.

†**FRANKLIN.** Area 228,738 acres, 82,416 acres cultivated. Land is mostly rolling, with some scrub and poplar. Soil black loam, 8 to 12 in. deep, on clay subsoil. Watered by rivers and creeks. Wells 12 to 24 ft. A grain-growing district, well suited to mixed farming. Considerable amount of corn grown for

†No returns in 1919 from local authorities.

fodder, Market at Winnipeg. Served by C.P.R. and C.N.R. Average crops per acre: wheat, 12 to 20 bush.; oats, 30 to 60; barley, 20 to 40; flax, 10 to 15. Rural Credit Society at Dominion City. Pop. 2,901, including Canadians, Americans and Germans. No homesteads available. Average price per acre of raw lands, \$12 to \$20; improved farms, \$25 to \$45.

†**GIMLI.** Area 79,340 acres, 2,717 acres cultivated. Land is rolling. Soil black loam, 6 to 10 in. deep, on white clay subsoil. Wells 20 to 100 ft. A mixed farming district. Cattle raising and dairying predominate. Grains and vegetables do well. Local market at Gimli. Winnipeg 50 miles distant. Served throughout by 2 lines of C.P.R. and steamers on Lake Winnipeg. Country is well wooded. Good scenery. Average crops per acre: Wheat, 25 bush.; oats, 65; barley, 30; Pop. 1,986, including Icelanders, Germans, Poles and Ruthenians. A few homesteads available. Average price per acre of raw lands, \$6 to \$10; improved farms \$10 to \$40

**HANOVER.** Area 183,065 acres, 38,700 acres cultivated. Land is flat; marshy at east corner, elsewhere dry. Soil in s.e. of 3 townships is sandy; of 2 tps. sandy loam; Tp. 7, R. 4, is good land; Tp. 7, R. 5, is heavy black clay. Wells from 10 to 150 ft. Served by C.P.R., Soo Line and C.N.R. Farming mixed, grain and dairying. Markets at Steinhach (450), the business centre, Otterburne, Niverville and Giroux. Crops average: Wheat, 15 bush.; oats, 40; barley, 30; average price per acre \$4 to \$15; improved farms \$8 to \$50. Pop. 4,210.

**KILDONAN EAST.** North of and adjoining Winnipeg. Area 8,000 acres. The most attractive residential district near Winnipeg. Served by a 10-minute car service to centre of the city. 6 miles of sewers and 4 miles of water mains have been laid and large extensions are under consideration. There are 48 miles of graded streets, 10 miles of which are gravelled. The soil is wonderfully fertile; in the rural parts market gardening and dairying are extensively engaged in. Pop. 5,000. Land for gardening from \$250 per acre upwards.

**KILDONAN WEST.** Total acreage area 8,146.96. Within 4 miles of city market, reached by asphalt pavement, gravel road and elec. ry. Very fertile soil. Chief products: market garden truck, dairying. Pop. 3,622.

**KREUZBURG.** Area 201,600 acres, 7,450 acres cultivated. Land is flat and marshy in parts, generally

†No returns in 1919 from local authorities.

wooded with poplar and spruce. Soil sandy loam and clay loam. Wells from 30 to 200 ft. in depth. Chiefly mixed farming, vegetables, cattle and poultry. Local markets at Komarino, Malonton, Fraserwood, Meleb, Rembrandt and at Winnipeg. About 2 townships available for homesteads. Transportation at present fairly good. The Hudson's Bay Co. has lands for sale. Pop. 3,923, including Ruthenians, Poles, Germans, English and Jews. Price of new lands \$7 to \$20 per acre.

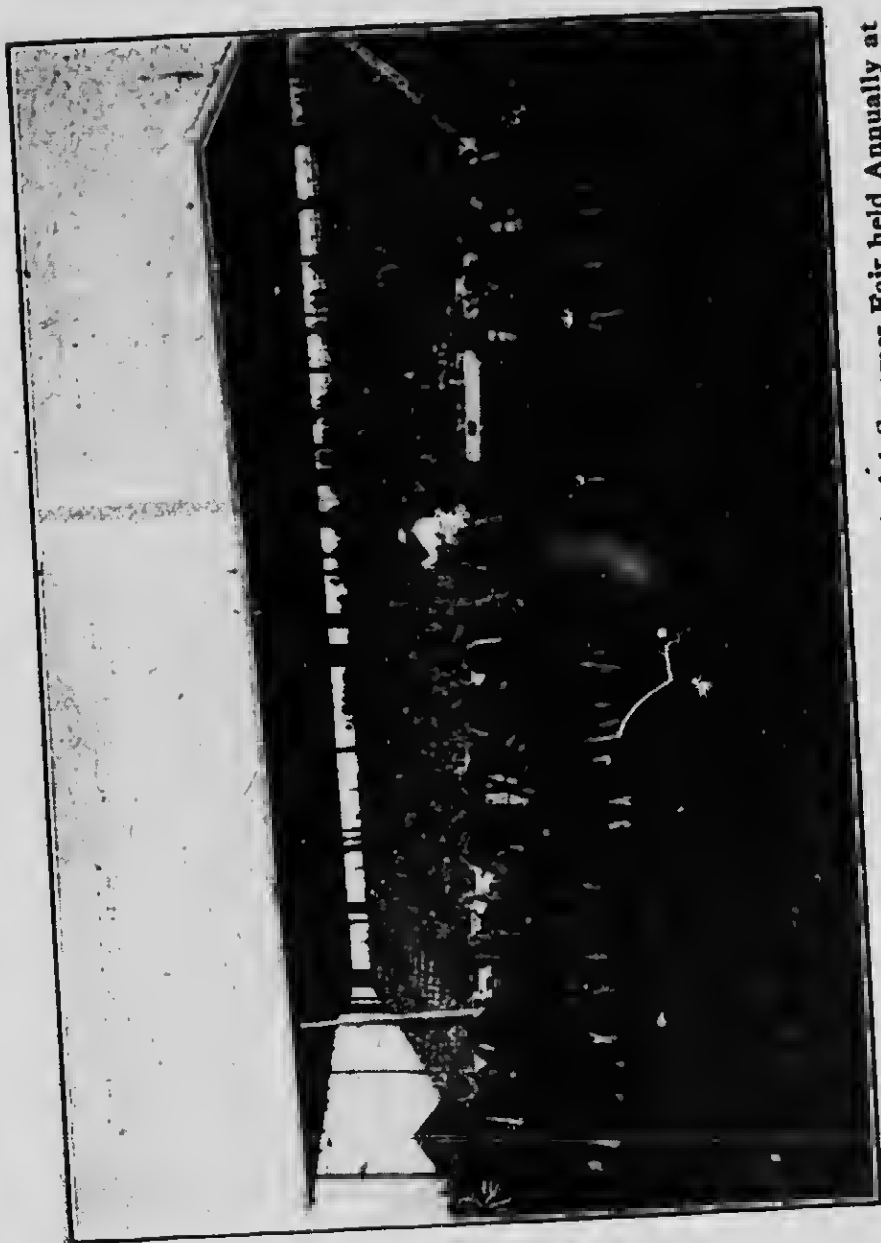
**LA BROQUERIE.** Area 207,360 acres, 6,870 acres cultivated. Land is rolling and marshy between the hills. Soil sandy loam, about 12 in. subsoil, clay to the north, gravelly to south. Watered by running wells 50 to 150 ft. Markets, Winnipeg in summer, lumber camps in winter. Served by C.N.R. Mixed farming. Wheat averages 15 bush.; oats, 45; barley, 40; flax, 8; roots, 150. Pop. 1,014. French and Germans. Provincial Government, Hudson's Bay Co. and Western Trust Co. have lands for sale. Two townships available for homesteads. Price per acre of raw lands, \$8; improved, \$30.

**MONTCALM.**—Area 110,472 acres; 89,475 acres cultivated, a successful dairy district in the fertile Red River Valley. 40 miles S. of Winnipeg near U.S. boundary. Land is flat. Soil, black loam. Watered chiefly by Red River. Varying success with wells. Leading products, wheat, hogs, cattle and milk. Served by N.P.Ry, G.N.R. and C.N.R. Good roads and bridges. Local markets at Letellier, St. Jean Baptiste, St. Joseph, St. Elizabeth. Pop. 2,878, English, French, Canadian, Mennonites, Germans. Average price per acre: raw lands, \$25; improved farms, \$40 to \$65.

**MORRIS.** Area 245,738 acres, 157,160 acres cultivated. Land flat, soil 18 inches, black loam on clay subsoil, very rich. No stone rock, some scrub along river. Watered by Morris and Red Rivers. Average crops: Wheat, 22 bush. per acre; oats, 40; barley, 30; flax, 12; roots, 400 bush. Stock raising and dairying. Served by the C.P.R., G.N.R. and C.N.R. and N.P.R. Markets, local and Winnipeg, 40 miles. About two-thirds of district under cultivation, one-fifth land held by non-residents. Pop. 3,220, including English, French and Russians. Average price per acre raw lands \$30 to \$50; improved from \$50 to \$100.

**RITCHOT.** Area 81,365 acres, 52,000 acres cultivated. Land is flat. Soil black loam 2 to 3 ft. deep. Watered by Red River and numerous coulees. Wells average 60 feet. A mixed farming district. Within a few miles





Judging six-horse teams at the Manitoba Provincial Summer Fair held Annually at Brandon.

of the Winnipeg market. Served by C.P.R. and C.N.R. Pop. 2,185 chiefly French Canadians. No homesteads available. Average price per acre of land in southern part, \$50; nearer the city about \$100.

**ROCKWOOD.** Area 287,109 acres, 75,000 acres cultivated. Land is slightly rolling and dry. Soil generally black and clay loam, 1 to 5 ft.; clay subsoil, but varies greatly. Wells 20 to 60 ft. Winnipeg and local markets at Stonewall, Balmoral, Gunton, Teulon, Stony Mountain. Served by C.P.R., C.N.R., and Selkirk, Winnipeg and Lake Winnipeg Electric Ry., from Winnipeg to Stonewall. Grain growing and dairying. Wheat averages 22 bush.; oats, 50; barley, 70; flax, 15; potatoes, 300. Rural Credit Society at Stonewall, Balmoral and Teulon. Pop. 3,773. Price per acre of raw lands, \$10 to \$40; improved, \$20 to \$150. Some homesteads available.

**ROSSER.** Area 105,737 acres, 46,006 acres cultivated. Land is rolling. Soil black loam; clay subsoil. Watered by wells 45 to 90 ft. Market at Winnipeg. Served by C.P.R. and C.N.R. Mixed farming. Wheat averages 20 bush.; oats, 40; barley, 35; flax, 18; roots, 250. Pop. 2,292, of various nationalities. Price per acre of raw lands, \$25; improved, from \$50 up. No homesteads available.

**ST. ANDREWS.** Area 181,346 acres; 24,662 acres cultivated. Land is rolling, with scrub. Soil black loam 10 to 48 in.; clay subsoil. Watered by creeks and wells 16 to 36 ft. and Red River and Lake Winnipeg on eastern boundary. Served by C.P.R. Markets, Winnipeg and local. Grain and mixed farming. Wheat averages 31 bush.; oats, 90; barley, 56; flax, 12. Pop. 2,482, including Canadians, Icelanders, English, and Americans. Rural Credit Society at Selkirk. No homesteads available. Average price per acre of raw lands, \$20; improved, \$45.

**SAINTE ANNE.** Area 161,280 acres, 115,598 acres under cultivation. Soil heavy black loam, some parts sandy. Watered by Seive River, wells from 15 to 30 ft., overflow 70 to 200 ft. Very good soft water. Wheat averages 20 to 40 bush.; oats, 60 to 70; barley goes seldom under 40 bush.; flax never under 15 bush.; roots, 200 to 350. Pop., including French, English and Mennonites, 3,658, rapidly increasing. About 400 homesteads available. Average price per acre of raw land, \$8 to \$40; improved farms, \$50 to \$70 per acre, rising with improved roads to \$90.

**Groux District.** Lies along C.N.R. 30-40 miles s.e.

from Winnipeg, for some time overlooked, now counted as one of the best mixed farming districts in Manitoba, partly wooded, with clear sections.

**ST. CLEMENT'S.** Area 300,000 acres, 18,813 acres cultivated. Land is rolling, with thickets of small timber. Some low lands in northern part near mouth of Red River, of which about 10,000 acres are cut annually for hay. Soil deep black loam, 12 to 28 in. deep, on clay subsoil. Served by C.N.R. and C.P.R. Markets, Winnipeg, Selkirk, and local. A mixed farming district. Wheat yields 30 to 40 bu h.; oats, 75 to 100; barley, 50 to 70; flax, 15 to 20. Rural Credit Society at Selkirk. Pop. 5,167. Mostly English speaking. Some Gallicians. No homesteads available. Average price per acre of raw lands \$15 to \$20; improved farms, \$30 to \$60.

**EAST ST. PAUL.** Area 10,308 acres, about 3,000 cultivated. Land slightly rolling and well treed. Drainage good. Excellent gravelled roads. Soil a black sandy loam 15 inches deep on a clay subsoil. The finest vegetables grown. Large acreage of potatoes. Market gardens and mixed farming pay very well, with ready market in Winnipeg for all that is grown. Average crop per acre: Wheat, 30 bush.; oats, 60; barley, 40; roots, 200 to 350. Served by C.P.R. and C.N.R. Good schools and churches. Post office, 2 stores and blacksmith at Birds Hill, 8 m. from Winnipeg. Keenora Park, on Red River, 6 m. from Winnipeg, has daily excursions to the large dancing pavilion. Rural mail delivery along main roads. Gravel and sand for all purposes from the hill. Electricity for light and power at Birds Hill and along River Road. Pop. 500, English speaking. Average price per acre in cultivated lands, \$40 to \$200; residential sites along Red River bank, \$500 to \$2,000.

**WEST ST. PAUL.** Area 20,903 acres, 2,119 acres cultivated, closely adjoining city of Winnipeg. Land flat, soil black loam 12 to 15 inches deep on clay subsoil. Watered by Red River, forming eastern boundary of municipality. Good water at from 50 to 100 ft. Mixed farming and gardening district producing oats, barley, hay and vegetables. Served by the C.P.R. Selkirk Branch and the Winnipeg, Selkirk and Lake Winnipeg Elec. Ry and Stonewall Branch. Average crops per acre: wheat, 30 bush.; oats, 60 to 80; roots, 200 to 350. Western part, held by non-residents, used for hay. Pop. 422, English speaking. Average price raw lands, \$100; improved lands along the Red River, \$800 to \$1,200 per acre.

†**SPRAGUE.** Area 552,960 acres, 5,611 acres cultivated. Land about half dry and rolling; balance marshy, with fall for drainage. Soil part sandy loam; part clay loam 12 to 18 in., with clay subsoil. Flowing wells from 65 to 100 ft. Served by C.N.R. Mixed farming. Crops average: Wheat, 30 bush.; oats, 50; barley, 35; flax, 18; roots, 400. Rural Credit Society at Sprague. Pop. 2,056, including English, Americans, French, Scandinavians and Austrians. Homestead land available. C.N.R. Land Co. and Hudson's Bay Co. have lands for sale. Improved farms lands selling at \$10 per acre up. Local markets at Piney, Sprague, Vassar.

**SPRINGFIELD.** Area 390,346 acres 40,933 acres cultivated. Land slightly rolling to the east from Winnipeg; w. part slightly rolling; e. part more rolling. Soil varies from deep black loam with clay subsoil to light sandy soil overlaid with gravel or marl. Brokenhead River and Cook Creek run through district affording outlets for drainage. Many open springs of pure water. Good water underlies whole country at from 40 ft. to 200 ft. Some flowing artesian wells. Mixed farming. Leading products, all cereals, forage and vegetables. Dairy products, cattle, sheep and hogs; cordwood, sand and gravel. Served by C.P.R., C.N.R., G.T.R. and Greater Winnipeg Water Districts Railways. Some good graded roads, others under construction each year. Two power transmission lines from Winnipeg run through district. Winnipeg nearby affords a good market for all produce. Local markets at Transcona, Oakbank, Dugald and Hazelridge. Homesteads of irregular quality available in 6 easterly townships. Price per acre of raw lands \$5 to \$75; improved farms \$30 to \$100. Pop. 4,801, half English, half foreign born, chiefly Galicians and Germans.

**STUARTBURN.** Area 276,480 acres; 44,101 acres cultivated. Land is flat or slightly rolling, and generally well drained. A few marshy places. Fertile dark sandy soil. Good water at 10 to 20 ft. A mixed farming and dairying district. Grains and vegetables thrive. Good local markets. Served by C.N.R. through centre of municipality. Average crops per acre: Wheat, 17 bush.; oats, 32; barley 27; potatoes, 347. Pop. 4,204, chiefly Rutbenians. Some homesteads available. Average price per acre of raw lands \$5 to \$15; improved farms \$10 to \$20.

**ST. FRANCOIS XAVIER.** Area 48,961 acres; 14,946 acres cultivated. Land is rolling. Soil, black loam, 12

†No returns in 1919 from local authorities.

in. Watered by Assiniboine River. Wells 100 to 200 ft. Served by C.P.R., C.N.R., G.T.P. Mixed farming. Leading crops, wheat, oats, barley and flax. Price per acre of raw lands, \$30; improved farms, \$50. Pop. 548. French Canadians and English.

**ST. VITAL.** Area 14,352 acres, 894 under cultivation, adjoining the city of St. Boniface on the e. bank of the Red River, connected with Winnipeg by 2 bridges and 20 mln. st. ry. service through St. Boniface. Mostly covered with oak, elm and poplar, and free from floods. Soil is unexcelled for market gardening. Has won the cup for two years in succession for the best display of vegetables at the Winnipeg Garden Show. Sewer, water mains and electric light service, a paved highway 6 miles long. Complete freedom from railroad tracks makes this the residential section par excellence of the Winnipeg district. Pop. 2,345.

**†TACHE.** Area 138,240 acres; 24,262 acres cultivated. Land is mostly flat. Soil, black loam, 1½ to 2 ft. deep on clay subsoil. Watered by wells 50 to 70 ft. and flowing wells at 250 to 400 ft. Leading crops, wheat, barley, oats, potatoes. Pop. 1,706, chiefly English and French. Price per acre of raw lands, \$12.50 to \$30; improved farms \$20 to \$60.

**WHITEMOUTH.** Area 167,890 acres, 20,000 cultivated. Land slightly rolling, with hills to east. Soil loamy clay 2 to 4 ft. deep, very fertile. Grains, vegetables and tame grasses grow to perfection, clover growing all through the woods. 3,000 tons shipped one year; hundreds of bushels of potatoes sent annually to Winnipeg and Kenora. Admirably adapted to dairying; large quantities of milk and cream shipped to Winnipeg and Kenora. Sheep do well; pasture is abundant. Dozens of car loads of sheep, cattle and hogs annually shipped to Winnipeg. Beekeeping is very profitable; several apiaries do good business. Government takes samples of grasses, clover and timothy, also of different grains from district for exhibition. Well watered by the Whitemouth and Winnipeg Rivers and numerous small creeks, with excellent water abounding with wish wells from 20 to 40 ft. Well served by 2 parallel railways from east to west. Long dist. phone connections with Winnipeg and Kenora. Bank, grain elevators and other public conveniences are all to be found in Whitemouth. There are large tracts of good timber, with spruce and poplar abounding with caribou, moose and deer, along the banks of Winnipeg River to the north and east. Fine

†No returns in 1919 from local authorities.

water powers are going to waste. Lumber can be purchased at \$20 per M. ft. from sawmills. A large tract of excellent land 15 m. n.e. of Whitemouth is being opened up. This is available for homestead. Pop., English, German and Swedes, about 2,000, is increasing rapidly. Price per acre improved farms, \$20 to \$40.

### North Central District

†**ARMSTRONG.** Area 151,821 acres; 8,754 acres cultivated. Pop. 1,251. No further returns.

†**ASHERN.** At present not organized, statistics not available. Land is flat and dry. Soil, black loam and clay loam. Wells 20 ft. to 50 ft. Served by C.N.R. Mixed farming (wheat, oats, barley, live stock). Local markets at Ashern, Moosehorn and Winnipeg. Some homesteads available. Average price per acre, raw lands, \$10; improved farms, \$25 to \$30.

†**BOULTON.** Area 138,240 acres; 11,400 acres cultivated. Lands slightly rolling.  $3\frac{1}{2}$  townships in the Riding Mountain. There is a timber reserve where big game and fur-bearing animals are plentiful. Soil black loam from 6 to 15 in. deep with clay subsoil. Watered by small creeks. Wells 15 to 40 ft. Mixed farming. Leading products: wheat, oats, barley, roots, dairying. Chief market Winnipeg. Raw lands \$15 to \$25 per acre. Improved farms \$30 to \$40. Pop. 722, Canadians, Germans, Russians, Austrians.

NOTE.—C.P.R. is now building a line into this municipality.

†**CARTIER.** Area 128,000 acres; 45,000 acres cultivated. Land flat. Soil, black loam with clay subsoil. Watered by wells 50 to 60 ft. Served by C.N.R. and G.T.P. Mixed farming and grain. Leading crops, wheat, hay. Local markets at Elie and Dacotah. Price per acre of raw lands, \$18 to \$25; improved farms, \$30 to \$40. No homesteads available. Pop. 1,920, French, English speaking.

†**COLDWELL.** Area 207,360 acres, 8,468 acres cultivated. Land is rolling, soil sandy loam. Wells average 35 ft. Mixed farming. Served by 2 railways. Chief crops: wheat, oats, barley, flax, roots. Rural Credit Society at Lundar. Pop. 1,832, chiefly English.

†**CYPRESS, NORTH.** Area 288,000 acres; 140,235 acres cultivated. Land  $\frac{1}{3}$  rolling, rest flat. Soil, sandy

†No returns in 1919 from local authorities.



What cattle would not grow fat on pasture like this? Read announcement on page 57.  
headed "Manitoba Farms, Scott, Hill & Co."

loam. Watered by streams and wells averaging 18 ft. Mixed farming. Leading products, wheat, oats, barley, potatoes. Local markets at Carberry, Brookdale, Hellwood. Grain elevators every 5 miles. Served by C.P.R., G.T.R. and C.N.R. Average price per acre, raw lands; \$3, improved farms, \$25. Pop. 1,834. English, Irish, Scotch and Danes.

**ELTON, NORTH BRANDON DISTRICT.** Area 138,240 acres, 104,120 acres cultivated. Land is slightly rolling and well drained by ravines. Soil, clay loam 12 in., clay subsoil. Watered by a few springs. Wells 10 to 100 ft. Markets at Brandon and Winnipeg. Served by G.T.P., C.P.R. and C.N.R., main lines and branches. Good roads, churches and schools. Mixed farming, grain and stock-raising. District is noted for pure-bred Clydesdale and Percheron horses, Shorthorn, Angus and Holstein cattle. Wheat averages 20 bush.; oats, 50; barley, 35. Numerous prizes won at Brandon Exhibition for stock and grain. Pop. 1,453, including Canadians, English and Scotch. No homesteads available. A little raw land for sale at \$20 to \$25 per acre; improved farms, \$30 to \$60.

†**ERIKSDALE.** Area 175,397 acres; 23,527 acres cultivated. Land, flat and dry. Soil, black loam and clay loam. Wells 20 to 50 ft. Served by C.N.R. Mixed farming (wheat, oats, barley, dairying). Markets at Eriksdale and Winnipeg. 2 grain elevators at Eriksdale. No homesteads. Average price per acre, raw lands \$10 to \$12; improved farms, \$25 to \$30. Pop. 2,253.

†**ETHELBERT.** Area 276,480 acres; 17,731 acres cultivated. Land is rolling, sloping from Duck Mts. Soil, black loam; subsoil, clay, gravel or sand. Watered by rivers, creeks and wells, 14 ft. Served by C.N.R. Mixed farming. Leading crops, wheat, oats, barley, potatoes. Markets at Ethelbert, Garland. Price per acre of raw lands, \$8; improved farms, \$15. Very few homesteads available. Pop. 4,275, Ukrainians.

**HARRISON.** Area 138,240 acres, 38,300 acres cultivated. Land is rolling. Soil black loam 12 in. Wells 10 to 100 ft. Principally grain growing. Leading crops: oats, wheat, barley, vegetables. Served by C.P.R. through southern part, and C.N.R. through northern part. Local market at Newdale and Sandy Lake (a summer resort). Price per acre raw lands, \$25; improved farms \$35 to \$50. Pop. 1,640.

†No returns in 1919 from local authorities.



- HILLSBURG.**—Area 177,600 acres; 9,362 acres cultivated. Land is generally rolling. Soil varies from sandy loam to heavy black loam, average depth 12 inches with clay subsoil. Watered on w. by Shell River and Short Creek; on e. by Valley River, natural springs and lakes. Wells 20 to 50 ft. Good mixed farming district. Plenty of pasture and natural hay. Leading crops, wheat, oats, barley, rye. Potatoes are usually good crop. Cultivated hay a fair success. Local markets at Roblin, Wablin, Shevlin, Bield, and Shortdale. Served by C.N.R. main line. About 2,000 acres of homestead lands available. Average price raw lands, \$8 to \$12. Improved farms, \$10 to \$25. Wood for fuel generally obtainable. Cheap building material at nearby sawmills on Riding and Duck Mt. Forest reserves. Fish, duck and big game plentiful. Population 1,000.
- LAC DU BONNET.** Area 276,480 acres; 3,297 acres cultivated. No further returns.
- LANSLOWNE.** Area 253,440 acres, 101,000 acres cultivated. Land is rolling with lower lands well drained. Soil varies from heavy clay to sandy loam. Watered by White Mud and Grassy rivers and smaller streams. Wells 10 to 100 ft. Served by C.P.R. and C.N.R. Local markets at Arden, Keyes, Plumas, Glenella, Kelwood, Riding Mountain, Birnie, Eden, Neepawa. Mixed farming, grain and dairying. Wheat averages 20 bush.; oats, 40; barley, 25; flax, 13. Rural Credit Societies at Arden and Glenella. Pop. 3,000, including Canadians and British. Price per acre of unimproved lands, \$10 to \$40; improved, about \$30 to \$40.
- LANGFORD.** Area 135,040 acres, 84,039 acres cultivated. Land is rolling prairie, situate on slopes approaching Riding Mountains. Soil black loam 16 to 30 in. deep. Exempt from frost. Wells 12 to 30 ft. Served by 7 lines of railway. Chiefly wheat growing. Dairying is being developed. Average crop: Wheat, 22 bush.; oats, 40; barley, 35; flax, 18. Wood can be obtained from adjacent mountains. Average price per acre raw lands, \$18 to \$25; improved farms, \$25 to \$50. Pop. 1,172, practically all Anglo-Saxons.
- LAWRENCE.** Area 335,457 acres, 7,760 acres cultivated. Land is rolling with ridges from s.w. to n.e., and meadow land between. Easily drained. Soil is black loam, 6 in. to 2 ft. deep, with limestone, gravel and clay subsoil. There are lakes on n.e. and w. boundaries. Wells 50 to 60 ft. Served by C.N.R. Chiefly mixed farming. About 600 homesteads available. Local markets at St. Rose du Lac, Ochre River and

Makinak. Rural Credit Society at Lawrence. Pop. 1,703, including English, Scotch, Canadians and Austrians. Price of raw lands \$8 to \$19 per acre.

**McCREARY.** Area 230,400 acres, 18,000 acres under cultivation. Land is level and well drained, ranges 13 and 14 have a shallow soil ranging from 12 to 18 inches, with a few stony ridges, with a clay subsoil. Ranges 15 and 16 have a heavy black loam from 3 to 6 ft., with good clay subsoil, with some brush, but these ranges are mostly under cultivation now. Good water can be obtained at 12 to 18 ft. Markets: Winnipeg, Neepawa, Brandon and Dauphin, and local markets. Mixed farming, fodder abundant. Wheat averages 25 bush.; oats, 60; barley, 45. Timber fairly plentiful in the Riding Mountains which provide protection from hail and frost. Rural Credit Society at McCreary. Good railway accommodation. Good scenery and sport. Pop. 2,000, including English, Canadians, Americans and French Canadians. The Hudson's Bay Co. and C.N.R. have lands for sale at from \$15 to \$35 per acre for wild lands; improved farms from \$45 to \$75 per acre.

**NORFOLK, NORTH.** Area 276,480 acres, 140,460 acres cultivated. Land varies from hilly to flat. Soil sandy loam and clay loam. Watered by wells 10 to 70 ft. Winnipeg and local markets at Macgregor, Austin, Sidney, Bagot, Beaver and Rossendale. Served by C.P.R., C.N.R. and G.T.P., main and branch lines. Mixed farming, grain, dairying and stock. Wheat averages 18 bush.; oats, 40; barley, 30; flax, 15. Rural Credit Society at Austin and MacGregor. Pop. 2,984, including English, Scotch, Irish and Canadians. Price per acre of raw lands, \$10 to \$25; improved \$30 and up. No homesteads available.

†**OCHRE RIVER.** Area 127,592 acres; 21,134 acres cultivated. Land is rolling or flat. Soil along the Ochre River is heavy black loam, 2 ft., clay subsoil, balance of land is good quality of black loam, 12 in., with clay and shale subsoil. Watered by Ochre and Turtle rivers and numerous streams fed by springs rising in Riding Mountains. Wells average 20 ft. Very good water. Markets at Winnipeg, Portage la Prairie, Dauphin, and local points. Served by C.N.R. main line and Ste. Rose branch. Mixed farming and grain growing. Wheat averages 20 bush.; oats, 55; barley, 35; (in 1914 some farms yielded 40 bush. of wheat, and 100 bush. of oats). Rural Credit Society at Ochre River. Pop. 1,243, English speaking with a

†No returns in 1919 from local authorities.

few French and Belgians. Homesteads available in 41 townships. Price per acre of wild lands \$10 to \$20; improved \$12 to \$40.

**PORTAGE LA PRAIRIE.** Area 501,893 acres; 223,635 acres cultivated. Land is level prairie. Soil black loam on clay subsoil. Watered by wells 16 to 135 ft. Served by main lines and branches C.P.R., C.N.R., G.T.P., G.N.R., giving easy access to markets at Winnipeg and Fort William. Grain growing districts. Wheat averages 20 bush.; oats, 50; barley, 40; flax, 15; roots, 300. Rural Credit Society at Oakville. Pop. 3,899, including Canadians, Americans, English, Scotch, Irish. No homesteads available. Average price per acre of raw lands, \$10 to \$35; improved \$45 to \$100.

**ROSEDALE.** Area 207,360 acres; 82,193 acres cultivated. Land is rolling, traversed by Riding Mts. Soil except s.e. corner black loam, 12 in. or more; clay subsoil. Watered by streams. Wells 10 to 50 ft. Neepawa and other local markets. Served by 50 miles of railway in the municipality. Farming all kinds chiefly grain. Wheat averages 20 bush.; oats, 45. Abundant fuel and timber in neighbourhood. Rural Credit Societies at Kelwood and Riding Mountain. Pop. 3,061, English speaking, with Slavs in n.w. Price per acre of raw lands \$20 to \$25; improved \$30 to \$60.

†**ST. LAURENT.** Area 96,197 acres; 946 acres cultivated. Soil varies. Watered by Lake Manitoba, Shoal Lake and several small lakes. Wells from 8 to 60 ft. A mixed farming and dairying district. Served by C.N.R. Markets at local points and Winnipeg. Average price of raw lands, per acre \$10; improved farms, up to \$24. Pop. 903, includes Canadians, Irish, English, and French.

†**STE. ROSE.** Area 177,920 acres; 24,738 acres cultivated. Land is flat with ridge running n. to s. Soil, black loam, 6 to 12 in; yellow clay and sandy subsoil. Watered by Turtle River. Wells 30 to 150 ft. Served by C.N.R. (twice a week from Ochre River). Mixed farming, grain, cattle raising, dairying. Leading crops, wheat, oats, barley, hay. Local markets, Ste. Rose du Lac, Laurier, Ste. Amelie, Valpey. Price per acre of raw lands, \$10 to \$25; improved farms, \$15 to \$35. A few homesteads available. Pop. 1,794, French-Canadians, Belgians.

**WESTBOURNE.** Area 740,000 acres; 112,000 acres cultivated. Land is level, sloping gently, and well drained. Soil varies from sandy loam to heavy clay.

†No returns in 1919 from local authorities.

Watered by Lake Manitoba and several rivers. Wells from 20 to 120 ft. deep. Markets well served by C.N.R. main line and 2 branches, and C.P.R. 18 stations in municipality. Mixed farming and stock raising. Wheat averages 20 hush.; oats, 60; barley, 30; flax, 16; roots yield heavily. Rural Credit Societies at Plumias and Langruth. Pop. 7,772, (increasing rapidly) Canadlans, British, Americans, Icelanders, Russians, Germans and Galicians. Big Point on Lake Manitoba, is a summer resort. C.N.R., C.P.R. A few homesteads. Price per acre raw lands, \$15 to \$40; improved \$30.

†**WOODLEA.** At present unorganized, statistics not available. Land, flat and dry. Soil, clay loam. Wells 20 to 50 ft. Served by C.N.R. Mixed farming (wheat, oats, barley, live stock). Markets at Mulvibill, Winnipeg. Some homesteads available. Average price, raw lands, \$10; improved farms, \$25 to \$30.

**WOODLANDS.** Area 260,778 acres; 35,076 acres cultivated. Land is flat and dry. Soil varies; in parts it is shallow and stony, but the greater portion compares favorably with any in the Province. Watered by wells 15 to 100 ft. Markets at Winnipeg. Served by C.P.R. main line and C.N.R., 2 branches. All kinds of farming. Wheat averages 23 hush.; oats, 36; barley, 38; flax, 12. Rural Credit Society at Warren. Pop. 1,317. No homesteads available. Price per acre of raw lands, \$15 to \$30; improved, \$30 to \$85.

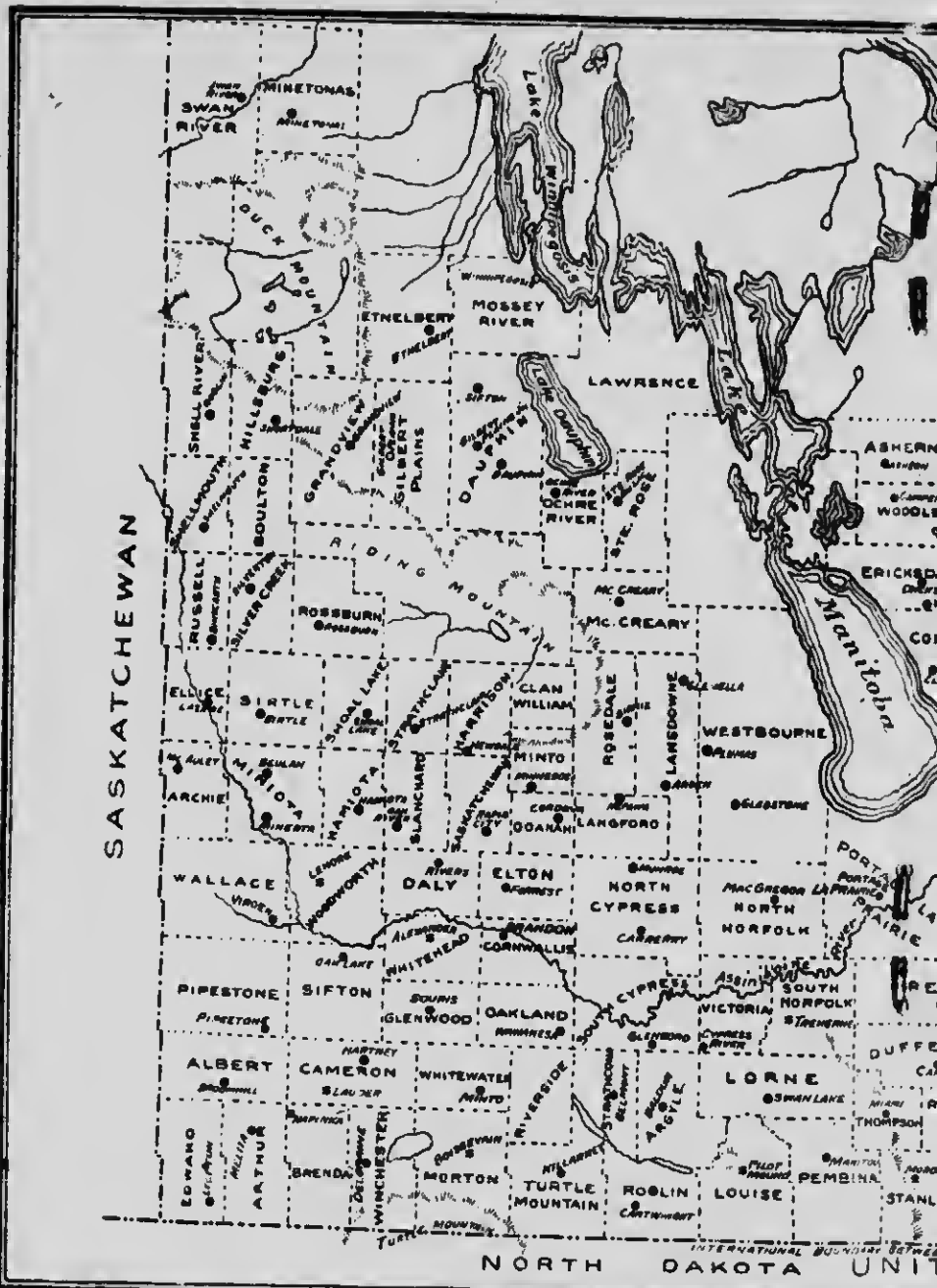
### South Central District

**ARGYLE.** Area 190,595 acres; 94,280 acres cultivated. Land is rolling. Soil 18 in. of black loam with clay subsoil. Wells average 25 ft. Good railway transportation. Average crops per acre: Wheat, 20 bush.; oats, 60; barley, 35; flax, 12. Local markets at Baldur, Greenway, Glenora and Neelin. Pop. 1,237, including Canadians, English and Icelanders. Land mostly taken up. Very few homesteads available. Price of raw lands, \$20; improved farms, \$25 to \$30.

**CYPRESS, SOUTH.** Area 266,040 acres; 78,000 acres cultivated. Land rolling, flat and billy in some parts. Soil, sandy loam, watered by rivers and wells. Mixed farming. Leading crop, wheat. Local market at Glenboro. Average price improved farms \$50 to \$75. Pop. 2,000, English, Canadians and Icelanders.

**DUFFERIN.** Area 218,880 acres; 126,150 acres cul-

†No returns in 1919 from local authorities.



The total area of Manitoba is 251,832 sq. miles. Of this of which about 9 million

PART OF  
**MANITOBA**

SPECIALY COMPILED  
FOR  
**HEATON'S HAND BOOKS  
OF CANADIAN RESOURCES**

*Rural Municipalities shown  
with dotted boundary lines*

SCALE OF MILES 0 50



over 30 million acres of land can be cultivated to advantage;  
acres are under cultivation

THE MAP COMPANY  
14 LEADER LA TORONTO

tivated. Land is flat. Soil: Township 7 is sandy, elsewhere is black and clay loam, averaging 2 ft. with clay subsoil. Watered by Boyne River and Tobacco Creek. Wells 14 to 125 ft. Served by C.P.R., C.N.R. and G.N.R.; 2 trains to Winnipeg daily. Leading crops: wheat, oats, barley, flax. Pop. 2,221, including Canadians, Scotch and Americans. District has won first prize for wheat in competition with the Province.

**GREY.** Area, 230,400 acres; 114,896 acres cultivated. Land, partly flat, partly rolling. Soil, sandy loam and black loam, 6 in. to 15 in. clay subsoil. Watered by wells 10 to 500 ft. and artificial ponds. Mixed farming and dairying. Leading products, wheat, oats, barley, butter, eggs, beef and pork. Local markets at Winnipeg, Elm Creek, St. Claude and Fannystelle. Served by C.P.R. and G.N.R. Raw lands cost \$10 to \$30. improved farms \$15 to \$50. Rural Credit Society at Fannystelle. Pop. 2,272, English, Irish, Scotch, French, Belgians.

**LORNE.** Area 230,400 acres; 101,442 acres cultivated. Land is mostly rolling. Soil black and clay loam, 18 in. Watered by wells, 20 ft. Well wooded and picturesque, with several lakes. Markets at Winnipeg, 84 miles, Brandon, 87 miles, via C.N.R., and Somerset, Cardinal, Altamont, and Swan Lake. Served by C.N.R. Farming—grain, cattle, hogs, dairying. Wheat averages 22 bush.; oats, 50; barley, 30; Pop. 3,812, including Canadians (English and French), British and Belgians. Price per acre raw lands, \$20; improved, \$30. No homesteads available. Provincial Government has lands for sale, also Hudson's Bay Co. and Canada N.W. Land Co., Winnipeg.

†**LOUISE.** Area 230,560 acres; 147,692 acres cultivated. Land is rolling. Soil mostly black loam, 1½ to 2 ft. deep, clay subsoil; some light soil. Townships 1 and 2 have especially fine lands and buildings. Watered by Pembina river and creeks. Wells 15 to 100 ft. Local markets at Pilot Mound, Crystal City and Clearwater. Mixed farming and grain; some stock raising. Wheat averages 20 bush.; oats, 45; barley, 35. Pop. 2,110, all British. Price per acre raw lands, \$23; improved \$32. No homesteads available.

†**MACDONALD.** Area 274,698 acres; 152,516 acres cultivated. Land is level, or slightly rolling. Watered by La Salle and Scratching rivers. Wells 20 to 30 ft. Soil is good black loam. Local markets at Sanford, Winnipeg, La Salle and Starbruck. Served by C.N.R.

†No returns in 1919 from local authorities.

and C.P.R. Farming—grain, cattle and dairying. Wheat averages 22 bush.; oats 27; barley, 31; flax, 16. Pop. 3,716, including English, French, Germans and a few Scandinavians. Price per acre of raw lands, \$18 to \$25; improved, \$35 to \$50. No homesteads available.

†**NORFOLK, SOUTH.** Area 177,280 acres; 88,273 acres cultivated. Land is undulating. Soil varies, comprising sandy, black and clay loam. Excellent land near Treherne, well timbered, with good water. Watered by Assiniboine River and creeks. Wells about 14 ft. Served by C.P.R. and C.N.R. Local markets at Treherne, Rathwell, Notre Dame. Grain and mixed farming. Wheat averages 17 hush.; oats, 45; barley, 30; flax, 18; potatoes, 300. Pop. 2,801, including English, Scotch, Irish, Canadians and a few French. Price per acre of raw lands (poor quality), \$5 to \$20; improved, \$20 to \$50. No homesteads available.

†**PEMBINA.** Area 270,080 acres; 148,931 acres cultivated. Land is gently rolling. Soil black loam, 16 in. on clay subsoil. Watered by Pembina River. Good water obtainable in shale rock at 22 ft. A very rich mixed farming, dairying and grain-growing district. Served by C.P.R. Deloraine branch. Five elevators (200,000 bush. capacity) at Manitou. Average crops: wheat, 25 hush.; oats, 50; barley, 35. Oil and natural gas have been struck in large quantities and are being developed by an English syndicate. Pop. 3,274, English, Irish, Scotch and French. Price of improved farms, \$30 to \$45 per acre.

**RHINELAND.** Area 230,400 acres, 160,000 acres cultivated. Land flat and well drained. Soil western part sandy black loam, eastern black loam with clay subsoil. Watered by wells (average depth 16 ft.). Served by C.P.R. and Midland R.R. Farming mostly grain. Wheat in 1919 (a rust season) averaging 15 bush.; oats, 35; barley, 25; flax, 15. No dairy cattle. An excellent climate, musk and water melons growing freely. Local markets at Gretna, Altona, Rosenfeld, Horndean and Plum Coulee. Pop. 6,100, mostly Mennonites. Price per acre of raw land \$35; improved farms \$50 to \$7.

†**RIVERSIDE.** Area 139,737 acres; 81,747 acres cultivated. Land is slightly undulating in the south, slightly in the northern district. A large valley runs diagonally from n.w. to s.e., Linette village being on north end of large lake, offering summer resort opportunities. Soil black loam with clay loam subsoil. Souris River flows through the north-western part.

†No returns in 1919 from local authorities.



Several small lakes through the centre and south districts. Wells 10 to 300 ft. Served by C.N.R. Mixed farming. Leading products, wheat, oats, barley, horses, cattle, and pigs. Local markets are at Dunrea, Ninette, and Margaret. Average price per acre raw lands \$12 to \$20; improved farms, \$25 to \$40. Pop. 1,420, Canadian, English and French-Canadians.

**ROLAND.** Area 115,200 acres; 105,931 acres cultivated. Land is flat and dry. Soil black clay loam. Wells 15 to 50 ft. Mixed farming and grain growing. Leading products wheat, oats, barley, rye, flax. Served by C.N.R. and Midland R.R. Local markets at Roland, Myrtle and Jordan Siding. No homesteads available. Average price per acre raw lands, \$35; improved farms, \$65. Pop. 2,066, English, Scotch and Irish.

**STANLEY.** Area 206,800 acres; 143,896 acres cultivated. Land partly wooded; about 10,000 acres prairie; some hilly, including Pembina Mountains, which are interspersed with well-wooded valleys. Soil partly clay loam, partly sandy loam, mostly with clay subsoil. Watered by several creeks lined with trees. Served by C.P.R. and C.N.R., with G.N.R. 1 mile from north boundary. Excellent roads, good markets. Wells average 18 ft. Mixed farming. Cattle and hogs are purchased by buyers on the farms; cream, etc., by creamery at Morden. Average crops: Wheat, 15 to 25 bush.; oats, 25 to 45; barley, 20 to 35; flax, 12 to 15; roots, 200. Corn for feeding does well. No summer frosts. Pop. 4,112, including Canadians, Scotch, Irish, English, Germans, Mennonites, Scandinavians, Icelanders. Most farms are protected by a bluff. Lands have been held by speculators and tenants. No raw lands available. Improved farms average \$45 to \$70 per acre.

**STRATHCONA.** Area 118,255 acres; 57,028 acres cultivated. Land is rolling and dry. Soil black loam, 8 ins.; clay subsoil. Watered by small sloughs. Wells 10 to 30 ft. Local markets at Belmont, Hilton and Ninette. Served by C.N.R. Mixed farming. Wheat averages 18 bush.; oats, 24; barley, 28; flax, 10. Pop. 1,288, including Canadians, English and Scotch. Price per acre, raw lands \$10 to \$20; improved, \$25 to \$40. No homesteads available.

**THOMPSON.** Area 126,720 acres; 71,608 acres cultivated. Land is rolling. Soil is vegetable mould washed down in past ages from the Pembina Mountains, two miles from Mlaml. Watered by creeks. Wells 18 to 30 ft. Farming mixed. Served by C.N.R. Wheat averages 20 bush.; oats, 40; barley, 35; flax, 18. Local

markets at Miami and Rosebank. Pop. 1,613, chiefly Canadians. Average price of raw lands, \$25; improved farms, \$40.

**VICTORIA.** Area 168,320 acres; 59,353 acres cultivated. Land is rolling. Soil black loam, 12 ins. deep. Tps. 8 and 9, Ranges 11 and 12, and most of Tp. 7 Range 12, are very sandy. The rest is very good land. Clay subsoil. Watered by Assiniboine River, small streams and lakes. Wells average 18 ft. Served by C.P.R. and C.N.R. Grain and mixed farming. Wheat averages 18 bush.; oats, 50; barley, 45; flax, 15. Markets at Winnipeg, Holland and Cypress River. Pop. 2,310, including English, French and Belgians. Price per acre raw lands, \$20; improved farms, \$35 to \$45.

### North Western District

**ARCHIE.** Area 138,240 acres, 50,637 acres cultivated. Land is slightly rolling, with some hay sloughs. Soil in part of n.e. portion is sandy loam. All the remainder black loam 1 to 2 ft. deep, on clay subsoil, drained by coulees running into Assiniboine River. Wells 12 to 60 ft. deep. Served by Kirkelia branch C.P.R., main line C.P.R., Virden-McAuley branch C.P.R., and G.T.P. Leading crops: Wheat averages 20 to 38 bush.; oats, 40 to 80; barley, 25 to 40; flax, 12 to 18. Stock raising and dairying on the increase. Rural Credit Society at McAuley. Pop. 1,112, including Canadians, Scotch, English, Irish and Swedes. Damage by frost, hail and drought is almost unknown. Water power obtainable from Assiniboine River, Bird Tail Creek, Beaver Creek. Price per acre raw lands \$15; improved farms, \$25 to \$35. No homesteads available.

NOTE.—Good permanent roads under construction.

†**BLANCHARD.** Area 138,240 acres, 74,050 acres cultivated. Land is rolling. Soil, black loam on clay subsoil. Watered by Oak River and wells 12 to 40 ft. Served by G.T.P., C.P.R. and C.N.R. Good local markets. Mixed farming and grain. Wheat averages 25 bush.; oats, 60; barley, 50; flax, 25. Pop. 1,023, chiefly British; an old and prosperous settlement. Price of raw lands per acre, \$15 to \$20; improved, \$30 to \$40.

**BIRTLE.** Area, 207,360 acres; 59,328 acres cultivated. Soil, black loam; clay subsoil. Abundant wood and water. Good natural pasture. Watered by Bird Tail Creek flowing from Riding Mts. into Assiniboine River. Served by C.P.R., G.T.R., C.N.R. Average crops per

†No returns in 1919 from local authorities.

acre: Wheat, 20 bush.; oats, 50; barley, 40. An ideal district for mixed farming, grain, dairying and stock raising. This district has taken many prizes in Provincial Grain competitions, won three World's Championships in 1917 for wheat, oats and rye respectively, and high honors for grain and other natural products at Dry Farming Competition at Kansas City in 1918. Excellent schools and churches. Pop. 1,444, mostly Canadians and British. Price per acre of raw lands, \$20 up; improved farms \$25 up.

**CLANWILLIAM.** Area, 88,000 acres, 12,936 acres cultivated, comprising 4 townships. Land is rolling. Soil sandy loam and clay loam 9 to 18 in. Clay subsoil. Watered by streams and lakes. Wells 12 to 25 ft. Served by C.P.R. and C.N.R. Local markets at Erickson, Clanwilliam and Minnedosa. Mixed farming, subject to frosts, mostly oats grown. Wheat averages 20 bush.; oats, 40 to 80; barley, 30. Rural Credit Society at Erickson. Pop. 1,200, chiefly Scandinavians. Average price per acre raw lands \$12; improved \$15 to \$30. Several homesteads available.

**DALY.** Area 136,140 acres, 83,243 acres cultivated; an old settlement. Land is rolling. Soil varies from light sandy loam to heaviest clay, depth 2 ft. Subsoil chiefly clay. Watered by Assiniboine, Oak and Little Saskatchewan Rivers, and numerous creeks and springs. Wells from 20 to 50 ft. Grain growing and mixed farming. Average crops: Wheat, 25 bush.; oats, 50; barley, 60. Very heavy root crops. Local markets at Carnegie, Pendennis, Rivers, Wheatland and Bradwardine. Numerous prizes have been won at exhibitions. No homesteads available. Price per acre of unimproved lands, \$20; improved, \$40. Pop. 1,138, including Canadians, Scotch, English, Irish and a few Galicians.

**DAUPHIN.** Area 363,928 acres, 76,432 acres cultivated, in the north-west section between and round the Riding and Duck Mountains, skirting lakes Winnipeg and Winnipegosis, and including Lake Dauphin. The whole district is more or less thickly timbered, varying from scattered clumps of willows bordering the Assiniboine in the s.w. to groves of poplar and coniferous forests on the mountains. The country is well drained by the Vermilion, Ochre, Turtle, Valley and Wilson Rivers. Soil along rivers is rich alluvial loam. North of the Valley River and east of the C.N.R., it is apt to be shallow. A fine and sure mixed farming district. Crops of wheat, barley, oats, maize, alfalfa and ordinary farm produce are abundant. Settlers having no timber on their lands may obtain permits to cut dry

timber for fuel to the extent of 25 cords for 25c. in the forest reserves on Riding Mountains (1,535 sq. miles), and on Duck Mountains (1,450 sq. miles). Rural Credit Society at Dauphin. Late spring and early frosts are rare. Pop. 4,207.

†**ELLICE.** Area 138,240 acres, 24,468 acres cultivated. Land is flat, partly rolling and dry. Soil north of Beaver Creek and west of Assiniboine is sandy, all e. of Assiniboine is good wheat land, especially free from summer frosts; on e. bank sandy loam and clay loam, 2 to 3 ft., on clay subsoil. Watered by Assiniboine and Qu'Appelle Rivers and small creeks. Wells average 12 ft. Local markets at St. Lazare, Foxwarren, Blinsearth, Birtle, Weiwyn. Served by G.T.P., C.P.R. and C.N.R. Mixed farming. Wheat averages 25 bush.; oats, 65; barley, 45; flax, 20. Pop. 604, including English and French Canadians. Few homesteads available. Price per acre of raw lands, \$10; improved, \$25 to \$40.

**GILBERT PLAINS.** Area 215,040 acres, 82,431 acres cultivated. Land is rolling. 90% good agricultural land. Soil varies. Sandy, black and clay loam; mostly clay subsoil. Watered by rivers and numerous creeks. Wells at 10 to 50 ft. Served by C.N. Ry. Mixed farming and dairying, subject to frost. A first-class mixed farming country. Wheat averages 22 bush.; oats, 45; barley, 35; flax, 15. Firewood obtainable at Riding Mts. to the south and Duck Mts. to the north. Water power on Valley River. Pop. 3,283, Canadians, English, Scotch, Irish, Americans and Galicians. Price per acre of raw lands, \$11 to \$18; improved farms \$30 to \$80.

**GRANDVIEW.** Area 267,480 acres, 54,964 acres cultivated. Land slightly rolling and well drained. Soil, black loam, 12 in.; clay subsoil. Watered by Valley River, Silver Creek, Wilson Creek. Wells 20 ft. Served by C.N.R. main line. Local market at Grandview. Mixed farming, grain predominating. Wheat averages 24 bushels; oats, 60; barley, 40; flax, 15. Pop. 2,113. Canadians. Water power on Valley River. Few homesteads available. Price per acre of raw lands, \$20; improved farms, \$40.

**HAMIOTA.** Area 137,600 acres, 88,475 acres cultivated. The soil is black loam, with heavy clay subsoil. All the land is taken up. Wheat averages 20 to 25 bush.; oats, 50 to 60 bush.; barley 35 to 45 bush. per acre. Served by C.P.R., G.T.P. and C.N.R. Pop. 2,060. Price of unimproved land, \$25; improved land, \$40 to \$50 per acre.

†No record in 1919 from local authorities.

It was to organize the handling of improved farms such as these that the farmers of the west went into the land business themselves, through their own company — United Grain Growers' Securities Co., Ltd., owned and operated by the Organized Farmers, and popularly known as the "Land Department of the Grain Growers."



These are part of the buildings on a well-developed farm at Vir- den, Man., comprising 1,000 acres.



**MINIOTA.** Area 199,680 acres, 89,412 acres cultivated. Land, rolling prairie. Soil, black loam and yellow clay subsoil. Watered by Assinholne River and tributaries. Wells 20 to 50 ft. Stock farming and grain growing. Served by 4 railways. Average crops: Wheat, 25 bush.; oats, 50; barley, 40; flax, 20. Markets at Miniota, Crandell, Isabella, Beulah, and Arrow River. No homesteads available. Price per acre, improved farms, \$30 to \$40. Pop. 2,217. English, Canadians, Scotch and Irish.

**MINITONAS.** Area 181,220 acres, 50,000 acres cultivated. Land is rolling, with some patches of gravel. Soil chiefly deep black loam, 3 to 5 ft., with general clay subsoil. Some gravelly ridges. Plenty of good water at 8 to 12 ft.; 3 rivers and creeks. Served by C.N.R. Local markets. Crops chiefly grain, but district is better suited for mixed farming. Wheat averages 30 bush.; oats, 60 to 80; barley 50; roots and hay do well. Fuel is plentiful. Wild fruits abound. Rural Credit Society at Minitonas. Pop. 1,800, Canadians, English, Scotch, Americans. Some good homesteads available. Good motor roads. Good big game hunting. Price per acre of raw lands, \$18 to \$30; improved, \$20 to \$60.

**MINTO.** Area 89,340 acres, 46,240 acres cultivated. Land is rolling. Soil, black loam, 18 in. deep; clay subsoil. Wood plentiful. Watered by river, streams and small sloughs. Wells from 15 to 100 ft. Mixed farming. Wheat averages 23 bush.; oats, 60; barley, 28. Price per acre of raw lands, \$18; improved, \$25 to \$50. Rural Credit Society at Clanwilliam. Pop. 1,289.

**MOSSEY RIVER.** Area 368,640 acres, 14,059 acres cultivated. Land is level with a good fall; in parts marshy. Soil, black loam, 6 to 8 in., on clay subsoil. Some gravelly spots. Watered by Fishing, Fork, and Mossey Rivers. Situate 840 ft. above sea level and lying between two large lakes, rainfall is plentiful, and the air contains considerable moisture. Wells about 20 ft. Markets at Winnipeg and villages of Fork River and Winnipegosis. Served by C.N.R. Mixed farming and grain growing. Rural Credit Society at Fork River. Pop. 2,200, English and Galicians. Few homesteads available. Average price per acre, raw lands, \$12; improved farms cheap.

**ODANAH.** Area 92,160 acres, 41,234 acres cultivated. Land is rolling, broken in places by small lakes. Soil, black loam. Watered by streams. Wells 20 to 150 ft. Local markets at Minnedosa, Franklin, Moore Park, Cordova and Rapid City. Served by C.N.R. and C.P.R.

Mixed farming. Wheat averages 25 bush.; oats, 55; barley, 40; flax, 18; potatoes, 400. Pop. 1,001, including Englsb. Scotcb, Americans and Swedes. Price per acre of raw lands, \$15 to \$20; improved, \$25 to \$50.

†**ROSSBURN.** Area 184,320 acres, 35,421 acres cultivated. Land is rolling. Soil, sandy loam, 10 in., on clay subsoil. In east, and black loam, heavy soil in west. Watered by small lakes and streams. Wells 10 to 100 ft. Local markets at Rossburn, Roach and Vista. Served by C.N.R. Grain growing and stock raising. Wheat averages 25 bush.; barley, 45; oats, 60; potatoes thrive. Mostly oats grown. Pop. 2,614, including English, Irish, Scotcb, Austrians and Galicians. Price per acre of raw lands, \$8 to \$25; improved, \$25 to \$40.

**RUSSELL.** Area 138,240 acres; 56,200 acres cultivated. Land is rolling prairie, with poplar bluffs and park lands. Soil, black loam, 2 ft. deep. Wells 10 to 20 ft. A grain-growing and mixed farming district. Served by C.P.R. Yorkton branch and C.N.R. Rossburn branch. Market at Winnipeg. Average crops per acre: Wheat, 23 bush.; oats, 50; barley, 38; flax, 18. Rural Credit Society at Binscarth. Average price per acre of raw lands, \$30; improved farms, \$45. Pop. 985.

**SASKATCHEWAN.** Area 132,480 acres, 65,560 acres cultivated. Land is rolling. Soil, black loam, 1 to 2 ft.; clay subsoil. Watered by Little Saskatchewan River and ponds. Wells 20 to 100 ft. Local markets at Moline, Newdale, Basswood and Pettapiece, Rapid City and Minnedosa. Served by C.P.R. and C.N.R. Mixed farming. Specally good district for oats. Wheat averages 25 bush.; oats, 75. Pop. 1,305. Price per acre of raw lands, \$15 to \$20; improved, \$20 to \$40.

**SHELLMOUTH.** Area 138,240 acres, 37,460 acres cultivated. Land is rolling. Soil heavy black loam 1 to 3 ft. deep, with clay subsoil, some sand and gravel, fairly wooded with poplar bluffs. Watered by Assiniboine and Shell Rivers. Served by C.N.R. Wells 18 to 50 ft. Mixed farming. Crops average: Wheat, 30 bush.; oats, 65; barley, 40; flax, 24; roots, 300. Rural Credit Society at Shellmouth. Pop. 881, Canadians, with some Galicians. No homesteads available. Water power at Shell River. Fine scenery on river banks.

**SHELL RIVER.** Area 184,320 acres, 75,000 acres cultivated. Land is flat or slightly rolling, lying in valley between Assiniboine and Shell Rivers; broken in some places by sloughs. Watered by creeks and wells 15 to 30 ft. Soil, black loam, 2 to 3 ft.; clay subsoil. Market

†No returns in 1919 from local authorities.

at Winnipeg. Served by C.N.R. main line. Farming: grain, mixed and dairying. Wheat averages 20 bush.; oats, 45; barley, 25; flax, 10. Rural Credit Societies at Roblin and Silverwood. Pop. 6,100, Canadians, Americans and Ruthenians. Average price per acre of raw lands, \$10 to \$25; improved, \$30 to \$50.

**SHOAL LAKE.** Area 138,240 acres, 54,005 acres cultivated. Land is rolling. Soil, sandy loam, 12 in.; clay subsoil; very good oat land. Watered by lakes and creeks. Wells 30 to 100 ft. Local markets at Shoal Lake, Oakhurn and Kelloe. 5 grain elevators at Shoal Lake. Served by C.P.R. and C.N.R. Mixed farming. Wheat averages 28 bush.; oats, 65; barley, 50; roots, 200. Pop. 1,043. Price per acre of raw lands, \$20 to \$25; improved, \$30 to \$40.

**SILVER CREEK.** Area 138,240 acres, 41,160 acres cultivated. Land is rolling, with bluffs and sloughs. Soil black loam 8 to 24 in. deep; clay subsoil. Watered by small streams and lakes. Wells 15 to 40 ft. Mixed farming and grain. Wheat averages 25 bush.; oats, 60; barley, 35. Subject to occasional frosts. Oats and early varieties of wheat thrive best. Good cattle country. Served by C.N.R., and C.P.R. Local markets at Angusville and Silvertown. Pop. 1,245, including Canadians, British and Galicians. Price per acre of raw lands, \$25 to \$30, not much left without too much scrub; improved, up to \$50. Hudson's Bay Co., Winnipeg, has lands for sale.

**STRATHCLAIR.** Area 138,240 acres, 55,595 acres cultivated. Land is rolling. Township 17, Rg. 21. may be termed sandy; balance is black loam mixed with clay, 6 in. deep. Served by C.P.R. and C.N.R. Good wells at from 15 to 20 ft. Some small lakes. Mixed farming is general. A fine grazing country. Leading crops: wheat, oats, barley and potatoes. Markets at Strathclair, Shoal Lake, Newdale and Winnipeg. 10 grain elevators. Easy access to schools and churches. Price of raw lands, \$25 to \$30; improved farms \$35 to \$45. Pop. 1,735, including Scotch, English, Irish, Galicians and Canadians.

†**SWAN RIVER.** Area 414,720 acres, 64,108 acres cultivated. Land is generally rolling and fairly dry. Soil black loam 2 ft. deep with clay subsoil. Well watered by rivers and streams. Wells average 20 ft., unlimited pure water absolutely free from alkali. A mixed farming district. Chiefly grain growing with considerable market gardening and dairying. Fall wheat a feature.

†No returns in 1919 from local authorities.



yields from 25 to 45 bush. per acre. Strawberries, raspberries and all small fruits, tomatoes, cucumbers, celery, marrows, corn and practically every kind of vegetable mature perfectly all through the valley. Strawberries yield from 60 to 75 crates per acre, average price \$4 per crate. Excellent openings for market gardening and fruit growing. Leading crops: wheat, oats, barley, timothy, potatoes and small fruits and vegetables. Markets at Swan River, Minitonas, Benlto, Kenville, Durhan, and Bowsman. Homesteads are available. Served by C.N.R. main line and Thunderhill branch. Average crops per acre: Wheat, 23 bush.; oats, 50; barley, 45; roots, 300. Average price per acre of raw lands, \$10 to \$20; improved farms, \$20 to \$35. Rural Credit Society at Swan River and Durban. Pop. 2,700, chiefly Canadians, English, Americans, and Scandinavians.

†**WALLACE.** Area 275,200 acres, 136,579 acres cultivated. Land is rolling prairie with poplar groves in some parts. Soil, black loam, 1 to 3 ft. deep, with clay subsoil. Watered by Assiniboine and Pipestone Rivers and tributary creeks. Wells 10 to 50 ft. Served by C.P.R. main line from s.e. to n.w. corner. C.P.R. branches running north from Virden and Kirkella; C.N.R. from south to Virden and C.P.R. branches. Mixed farming. There are 2 creameries. Local markets at Elkhorn, Virden, Hargrave and Kirkella. Well served with rural schools. Municipal phone system. A very reliable wheat-producing district. Pure-bred stock is a specialty of the district. Wheat averages 20 bush.; oats, 40; barley, 30; flax, 15. Root crops are heavy. Rural Credit Society at Virden and Elkhorn. Pop. 1,697, Canadian, English and Scotch. District has won championship for wheat at Provincial Seed Fair. Average price of raw lands, \$15 to \$25; improved farms, \$20 to \$40.

†**WOODWORTH.** Area 207,360 acres, 121,369 acres cultivated. Lying north of Sifton municipality. Land is generally rolling, broken by ravines in places. Soil is heavy clay loam; very good wheat. Watered by Assiniboine River. Served by main line of C.P.R. and two other lines to the north. There is some timber in the River Valley in the south and north. Mixed farming prevails. Horses, cattle and hogs are raised. Rural Credit Society at Oak Lake. Pop. 1,749.

†No returns in 1919 from local authorities.

## South Western District

†**ALBERT.** Area 184,320 acres, 110,635 acres cultivated. Situated in the s.w. corner of Province. Land dark loam, clay subsoil; especially adapted for wheat, averaging 20 bush. per acre. Abundant growth of grass. Good water plentiful. Pop. 1,237. Cultivated land from \$18 to \$25 per acre; uncultivated land from \$12 to \$18.

**ARTHUR.** Area 183,840 acres, 138,000 acres cultivated. Land is flat, traversed by creeks, with steep banks. Soil varies from sandy loam to clay loam, 6 to 24 ins. Watered by Souris River, creeks and wells (average 25 ft.). Markets at Melita (chief centre), Elon, Cameron and Coulter. Served by C.P.R., 2 branches. Mixed farming and grain growing. Rural Credit Society at Waskada. Pop. 1,450, Canadians. Price per acre raw lands, \$12 to \$20; improved, \$40.

**BRENDA.** Area 184,320 acres, 161,805 acres cultivated. Land is rolling and nearly all dry. Soil black loam, 12 in., clay subsoil. Tp. 4, R. 25, is sandy. Watered by wells 25 to 40 ft. Natural gas has been struck in Waskada and is used for lighting, etc. Local markets at Napinka, Deloraine, Medora, Goodlands and Waskada. Served by C.P.R., 2 branches. Farming chiefly grain, some mixed, dairying and cattle. Rural Credit Society at Waskada. Pop. 1,817, including Anglo-Saxons and Danes. Price per acre of raw lands, \$28 to \$30; improved, \$32 to \$40.

**CAMERON.** Area 183,680 acres, 115,705 acres cultivated. Land chiefly rolling, in parts hilly; occasional marshes. Soil sandy north of Souris River, black loam at south. Wells 10 to 180 ft. Farming chiefly grain, some dairying. Served by C.P.R. and C.N.R., which meet at Hartney. Local markets at Winnipeg, 160 miles; Brandon, 40 miles; and local stations. Average crops: Wheat, 20 bush.; oats, 35; barley, 30; flax, 15; roots, 200. Few homesteads available. Pop. 1,298. Average price per acre, raw lands, \$30; improved farms, \$45.

†**CORNWALLIS.** Area 131,711 acres, 63,267 acres cultivated. Six townships. Land is rolling. Soil mostly black loam on clay subsoil. Townships 9 and 10, R. 17, are gravelly. Watered by Assiniboine and Little Souris rivers and Willow Creek. Wells 18 to 40 ft. The municipality includes the City of Brandon (pop. 22,000).

†No returns in 1919 from local authorities.



A typical Manitoba Farmer's Home.

Served by C.P.R., C.N.R., G.N.R. and G.T.P. Mixed farming and grain. Wheat averages 20 bush.; oats, 60; barley, 40; flax, 15; potatoes, 300. Some of the best cattle and horses in the West are bred here. The champion steer of 1912-1913 International Live Stock Exposition at Chicago was reared in this district; see under "Agriculture". Pop. of district 1,248, outside Brandon. No homesteads or raw lands available. Price per acre of improved farms, \$30 to \$60.

**EDWARD.** Area 184,320 acres, 100,720 acres cultivated. Land is rolling with level stretches. Soil varies, sandy loam, black loam, and clay loam is found, with clay subsoil; a few gravel streaks. Watered by creeks and wells from 12 to 40 ft. Farming, chiefly grain, some dairying. Served by three railways. Telephone system throughout. Local markets at Pierson, Lyleton, Elva and Tilston. Average crops: Wheat, 15 bush.; oats, 30; barley, 25; flax, 14; roots 300. First prize for wheat at Chicago Exhibition. Pop. 1,310, chiefly British or Canadians; a few Germans and Swedish-Americans. Price per acre: Raw lands, \$10 to \$20; improved farms, \$20 to \$40.

†**GLENWOOD.** Area 137,600 acres; 103,675 acres cultivated. Land is rolling. Soil, sandy to clay loam, clay subsoil. Watered by Souris River. Wells, 10 to 100 ft. Natural park on Souris River becoming popular summer resort. Served by C.N.R. Grain, mixed farming, cattle raising, dairying, small fruits. Leading crops, wheat, oats, barley, potatoes. Markets at Souris, Montelth, Carroll, Beresford. No homesteads or raw lands available. Price per acre of improved farms, \$20 to \$50. Pop. 832, Canadians, Scotch, English.

**MORTON.** Area 276,480 acres, 160,200 acres cultivated; an old settlement. Land is rolling. Soil, black loam, 6 to 12 ins., on clay subsoil. Watered by 5 streams from Turtle Mt. Township 1 in Turtle Mt. is hilly. Wells 18 to 40 ft. Served by C.P.R., C.N.R. and G.N.R. Leading crops: Wheat averages 18 bush.; oats, 40; barley, 35; flax, 10. Pop. 1,642, Canadians, English, Scotch and Irish. Among the lakes of Turtle Mt. is a summer resort, with good fishing. Average price per acre of improved farms, \$25 to \$50. No raw lands for sale.

**OAKLAND.** Area 138,240 acres, 91,507 acres cultivated. Land is slightly rolling. Soil, sandy loam in n.e. corner. The rest, black loam, 1½ to 3 ft. Friable clay subsoil. Watered by Assiniboine and Souris Rivers and numerous creeks. Wells 15 to 70 ft. Local markets at Wawanesa

†No returns in 1919 from local authorities.

and Rounthwaite on C.N.R., and Methven, Nesbitt and Carroll on C.P.R. Served also by G.N.R. Grain growing and horse raising. Wheat averages 20 bush.; oats, 40; barley, 28; flax, 21. Pop. 1,498, including Canadians, English, Scotch and Irish. Price per acre: Raw lands, \$15 to \$30; improved, \$25 to \$40.

**PIPESTONE.** Area 276,480 acres, 172,886 acres cultivated. Land varies from flat to hilly. Soil, from sandy loam to clay loam, on sand-clay subsoil. Watered by Pipestone Creek and others. Wells 8 to 100 ft. Served by C.P.R. and C.N.R. Local markets, Reston is chief. Grain growing district. Wheat averages 18 bush.; oats, 50; barley, 35; flax, 15. Rural Credit Societies at Sinclair and Woodnorth. In 3 years will have 200 miles graded and gravelled roads. Pop. 173,886, including Canadians, Scotch, English. No homesteads available. Average price per acre raw lands, \$20 to \$25; improved, \$25 to \$45.

**SIFTON.** Area 206,700 acres, 51,923 acres cultivated. Land, generally, is rolling; in parts hilly, with flats between the ridges. Soil is partly light loam with clay subsoil; in parts sandy. Served by C.P.R. main line and Souris branch and C.N.R. 2 miles from Oak Lake. Watered by Assiniboine River and Oak Lake. Good wells. Well adapted to general farming. Much wheat is grown and coarse grains. Wild hay is abundant. Stock raising is very profitable. Wheat averages 20 bush.; oats, 30; barley, 30. At Oak Lake there is a flour mill (daily capacity 750 bbls.). Poplar, elm, ash, and maple are found in the valley of the Assiniboine River. Pop. 1,336, including Canadians, Scotch, English, French Canadians. Price per acre: Raw lands, \$11 to \$14; improved, \$15 to \$45. Good duck shooting near Oak Lake.

**TURTLE MOUNTAIN.** Area 223,413 acres, 124,308 acres cultivated. Land is rolling. Soil, black loam, clay-subsoil. Watered by streams. Wells from 16 to 40 ft. No land is further than 8 miles from a railway station. Wheat is leading crop. Oats, barley, flax and roots do well. Pop. 1,713, chiefly Canadians. Average price of raw lands, \$10 to \$20; improved farms, up to \$40. There is a beautiful summer resort at Killarney Lake.

**WHITEHEAD.** Area 137,133 acres, 92,446 acres cultivated. Land slightly rolling, well drained. Soil, 1 to 1½ ft., black loam with clay subsoil. Assiniboine River runs through northern part. Wells 7 to 70 ft. Leading products, wheat, oats, barley, rye. Extensive horse, cattle and sheep breeding. Served by C.P.R., C.N.R., G.N.R. Local markets at Brandon, Beresford, Alex-

ander, Kemnay, Terrance and Griswald. Rural Credit Society at Alexander. Price per acre improved lands, \$25 to \$45. Pop. 1,028, English, Scotch, Irish, Canadian.

†**WHITEWATER.** Area 138,240 acres, 97,500 acres cultivated. Land is rolling. Soil, black loam on heavy clay subsoil. Watered by Souris River. Wells 40 ft. Served by C.N.R. and G.N.R. Local markets at Minto, Elgin and Fairfax. Grain growing and some stock. Wheat averages 20 bush.; oats, 45; barley, 50; flax, 12. Pop. 1,515, mostly Ontario Canadians. A very rich district, with good buildings. Price per acre: Raw lands, \$25; improved, \$40.

**WINCHESTER.** Area 172,637 acres, 106,991 acres cultivated. Mostly rolling or flat land. Soil, clay loam, 12 to 18 ins.; clay subsoil. Watered by wells 15 to 200 ft. Markets at Deloraine, Hartney, Elgin and Whitewater. Served by C.P.R. and C.N.R. Farming, chiefly grain. Wheat averages 18 bush.; oats, 40; barley, 37; flax, 16. Prizes won for wheat at Winnipeg, Brandon and World's Competition, New York. Rural Credit Society at Deloraine. Pop. 1,349, Canadians, British and Belgians. Lignite coal in district. Price per acre: scrub, \$10 to \$12; prairie, \$25 to \$30.

†No returns in 1919 from local authorities.

## Announcements

**MANITOBA FARMS—SCOTT, HILL & Co., 22 C. P. R. OFFICE BLDG., WINNIPEGO, MAN.** Farm Land Specialists. We have been operating and selling farm lands in Manitoba for 30 years. We have an extensive experience and know well the important and vital points of information an Emigrant or Land Seeker should know in order to get away to a good start and successful career. We have a large listing of well selected improved and equipped farms, improved stock ranches, blocks of choice wild land for colonisation purposes—from \$10 to \$25 per acre, easy terms.—Write us for any information regarding Western Canadian Lands.

**MANITOBA IMPROVED FARMS—UNITED GRAIN GROWERS' SECURITIES CO., LTD.**—"The Land Department of the Grain Growers," as United Grain Growers' Securities

## AGRICULTURAL DISTRICTS

Co., Ltd., is known, has a unique organization for selling improved farms throughout the Prairie Provinces. Purchasers can, by a call at one office, be put in touch with the situation throughout the whole West, and can buy with a minimum delay the farm most likely to suit in price, location and development. Land is only offered at the price set by the seller, who pays a fixed small commission on sale. The general confidence of buyers and sellers throughout Canada and in Great Britain and the United States has been won by the efficient work of this Department, helped greatly by its close relations with the wide-spread organization of the parent Association, the United Grain Growers, Ltd., which has 34,000 farmer shareholders, has handled 350,000,000 bushels of grain, and carries on many different lines of business for its members. Write to us. We solicit your correspondence. United Grain Growers' Securities Co., Ltd., Winnipeg, Man.



Cups won by Manitoba in the International Soil Products Exhibition at Kansas City, Mo., in October, 1918.

# The Boards of Trade Register

## Industrial Opportunities

**MANITOBA** has abundant raw materials for manufacturing purposes; cheap hydro-electric power; and excellent transportation facilities. Manitoba wastes all flax straw, and imports all cordage and linens; exports all raw hides, and imports all leather goods; destroys all wheat straw, and imports all straw-boards; Winnipeg imports all stoves and ranges, yet leads as a scrap-iron centre. The Winnipeg district grows high grade sugar beets, yet Winnipeg imports \$1,000,000 worth of sugar annually. There are special opportunities for manufacturers of farm implements, clay products, gypsum products, leather products, clothing, confectionery, metal goods, paper products, etc. Full reports on any line of business will be gladly furnished upon application to the Winnipeg Board of Trade.

**WATER POWERS.** Manitoba is well supplied with water powers. In the northern portion of the province, the Churchill, Neison and Saskatchewan have enormous power resources. The Winnipeg River, in the south-eastern portion of the province, is one of the best power rivers on the continent and is within easy transmission distance of the city of Winnipeg.

### Developed Water Power:—

Pinawa Channel, Winnipeg River, Winnipeg Electric Railway Plant.....	h.p.	35,000
Point du Bois, Winnipeg River, Municipal plant of city of Winnipeg.....		47,000
Little Saskatchewan River, Canada Gas and Electric Corporation.....		900
Little Saskatchewan River, Minnedosa Power Co.....		500

**Municipalities.** The municipalities in Manitoba furnished with electric energy from hydro power plants are: Brandon, Minnedosa, Selkirk, Winnipeg. A transmission wire is being laid from Winnipeg to Portage la Prairie.

### Undeveloped Powers:—

ON THE WINNIPEG RIVER the following undeveloped power sites have been investigated by the Dominion Water Power Branch of the Department of the Interior, Ottawa, all excellent commercial prospects and all within



## INDUSTRIAL OPPORTUNITIES

75 miles of Winnipeg. (See Water Resources Paper No. 3, Dominion Water Power Branch.)

	h.p.
Pine Falls site.....	63,100
Du Bonnet Falls site.....	95,500
McArthur Falls site.....	30,700
Lower Seven Sisters site.....	37,900
Upper Seven Sisters site.....	29,600
Upper Pinawa site.....	12,300
Slave Falls site.....	44,400

ON THE SASKATCHEWAN RIVER at Grand Rapids, the following sites have been investigated:

	h.p.
Upper Grand Rapids.....	75,000
Lower Grand Rapids.....	45,000

ON THE NELSON RIVER there is an estimated undeveloped power of 2,500,000 h.p.

The Chnrchill River in the north, and the Manigota-gan, Bloodvein, Pigeon, Berens, Poplar and other rivers in the south, all offer excellent power prospects when the market warrants development.

The most recent estimate of the total water power possibilities in Manitoba at ordinary minimum is 3,218,000 h.p. The power rivers have not as yet been fully investigated.

**License for Development.** Water power privileges are obtained through the Regulations of the Department of the Interior, Ottawa, governing the granting of water power rights in Manitoba, Saskatchewan, Alberta and the Northwest Territories. For further information communicate with the Superintendent, Dominion Water Power Branch, Ottawa.

**MANUFACTURES.** The following table furnished by the Dominion Bureau of Statistics gives: (a) Capital Invested, (b) Number of Employees, (c) Salaries and Wages, (d) Cost of Materials, (e) Value of Products, in the cities of Winnipeg, St. Boniface and Brandon in the year 1917. These are the latest figures at present available:

	Winnipeg	St. Boniface	Brandon
Capital.....	\$88,556,837	\$1,353,719	\$3,865,691
Employees.....	18,111	393	738
Wages.....	\$15,729,178	\$ 297,951	\$ 660,405
Materials.....	58,495,921	1,756,493	2,386,972
Prodnets.....	98,101,632	2,851,612	4,615,713

In the whole of Manitoba the total capital invested in manufactures in 1915 was \$95,845,845; in 1917 \$101,145,033; the value of products \$61,594,184 in 1915. \$122,814,881 in 1917.

## Descriptions of Towns

When Writing to a Local Reference, Mention Should be made of Heaton's Annual

*Extracts from the Official Boards of Trade Register published in Heaton's Annual and compiled from returns received from the local Boards of Trade. The Provincial Government assumes no responsibility in connection with this chapter.*

Chief Town of County Judicial District marked ¶

**ALEXANDER**, on C.P.R., 149 miles w. of Winnipeg. Restaurant, 3 churches (Ang., Pres., Meth.), 1 school, 4 elevators (159,000 hush.), telephone, lumher yard, livery stable, several stores, 1 hank. Pop. 500. Write Sec.-Treas. Whitehead Municipality, Alexander.

**ALTONA**, on C.P.R., 64 miles s.w. from Winnipeg. Hotel, 4 elevators (151,000 hushels), flour mill, telephone, church, hank, livery stable, 2 lumher yards, implements, harness shop, drug store. Pop. 450.

**SPECIAL OPPORTUNITIES.**—Barber, pool room. Write Bk. Montreal.

**BALDUR**, on C.N.R. branch line. 60 miles s.e. of Brandon. Hotel, Baldur. 4 churches, intermediate school, 1 hank, 2 elevators, restaurant. 3 stores, lumher yard, 2 livery stables, skating rink, 1 garage. Large shipments of cattle and horses. 2 implement warehouses. A local option town. Alt. 1,408. Pop. 450.

**SPECIAL OPPORTUNITIES.**—Flour mill, dairying, general store. Write Sec. Bd. Trade.

**BEAUSEJOUR**, on C.P.R., between Kenora and Winnipeg, 35 miles. Hotels, Beausejour, Howland. 6 churches (R.C., Greek, Adventist, Luth., Ang., Pres.), public school, hank, elevator, pressed brick co., flax fibre factory. Electric power. A good farming country. Poplar, spruce, tamarack and oak in vicinity. Pop. 1,100.

**SPECIAL OPPORTUNITIES.**—2nd elevator, cheese factory, creamery, grist mill. Write Sec. Bd. Trade.

**BINSCARTH**, on C.P.R., 155 miles from Portage la Prairie. Hotel, Royal \$2. Restaurant. 3 churches, school, hank, 4 elevators (250,000 bushels), lumher yard, livery stable, 2 blacksmiths, garage, doctor, drug store, general store and 8 others. Pop. 459. Write Town Clerk.

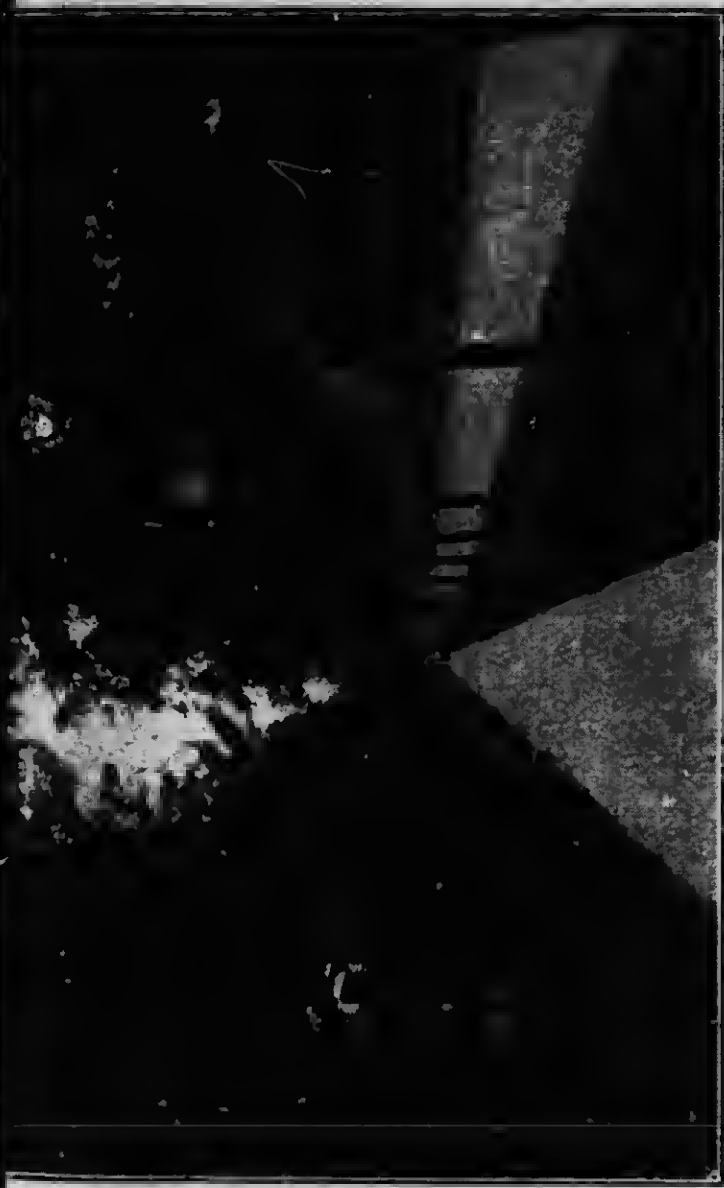
# BRANDON



*For description of the City of Brandon and special opportunities offering, see page 64.*

Brandon is the centre of a rich agricultural district including 286 small towns, villages and hamlets.

*For description of this district see page 53.*



**A Residential Street in Brandon**

Brandon is positively the best distributing centre for wholesale and jobbing in the west to-day.

For detailed reports on industrial openings write to the Commissioner of the Board of Trade, Brandon.

## DESCRIPTIONS OF TOWNS

**BIRTLE**, on Bird Tail Creek, 195 miles w. of Winnipeg, on C.P.R. and Man. N.W. Ry. 2 hotels. 3 churches, consolidated public school, Indian Industrial School, bank, local and long distance telephone, town lighted by gas, 4 elevators, flour and grist mill (not operating), machine shop, 2 lumber yards, newspaper, livery stable, moving picture show, spring water, no saloons. An ideal mixed farming district. Pop. 550.

**SPECIAL OPPORTUNITIES.**—Creamery, development of water power on Bird Tail Creek. Write Sec. Bd. Trade.

**BOLISSEVAIN**, on C.P.R. and G.N.R., 182 miles s.w. of Winnipeg, 48 miles s. of Brandon. Hotel, Queen's \$2.50. 5 churches, good high school, Land Titles Office, 2 banks, 4 elevators, 1 mill (200 bbls. daily), electric light. A fine wheat-growing district. Summer resort at Lake Max, nearby. Alt. 1,683. Pop. 900.

**SPECIAL OPPORTUNITIES.**—Brick plant, creamery. Write Sec. Treas. Bolissevain.

**BRANDON**, on Assiniboine River, 133 miles w. of Winnipeg, on C.P.R., C.N.R., G.N.R. Hotels, Prince Edward of C.N.R., Cecil, Imperial and 10 others. 16 churches, Brandon College affiliated with McMaster University at Toronto, Ladies' College, business college, Normal School, collegiate institute, 8 public schools, separate school, convent, Ruthenian Training School, Indian Industrial School, Experimental Farm, Land Titles office, general hospital, Provincial Asylum, court house, 10 banks, daily papers, motor fire department, 28 miles water mains, 23 miles sewers, 29 miles granite sidewalks, electric street railway owned by city, electric light and power plant, central steam heating plant, gas and power plant. Industries include flour, oatmeal, gasoline engines, grain grinders, windmills, pumps, fire engines, portable sawing machines, steel plate hot air furnaces, trip hammers, store counters, show cases, school desks, church pews, pulpits, sashes and doors, leather, harness, saddlery, tents, mattresses, lightning rods, fanning mills, corduroy coats, furs, hats, guide belts, bricks, cement blocks, fireworks, lenses for eyeglasses, cigars, butter, cheese, confectionery, ice cream, temperance beverages, etc. Nearly all the important farm implement manufacturers of Canada and the U.S.A. have distributing houses. 20 wholesale houses. Centre of a rich agricultural district, including 289 small towns, villages and hamlets. Pop. (Dom. Census) 5,620 in 1901, 13,839 in 1911, 15,225 in 1916.

**SPECIAL OPPORTUNITIES.**—Biscuit factory, woollen mills, vegetable canning, and many other lines. Write Commissioner Bd. of Trade.

**CARBERRY**, on C.P.R. and C.N.R., 28 m. e. of Brandon. Hotels, Western, Nelson. 3 churches, public and high schools, 3 banks, elevator, 1 newspaper, 4 livery stables, 2 general stores. Town owns elec. light plant and waterworks system. Good farming district. Alt. 1,258. Pop. \*878.

NOTE.—\$30,000 Post Office and Custom House to be erected.

**CARMAN**, on Boyne River and C.N.R., C.P.R. and G.N.R., 58 miles s.w. of Winnipeg. Hotel, Starkey \$2.50. 5 churches, high school, opera house, dist. office Man. Govt. telephones, Land Titles office, hospital, 3 banks, fine park. Town owns water, sewerage and electric light systems. 3 elevators, newspaper, creamery, 3 livery stables, saw factory. Alt. 872. Pop. 1,500.

SPECIAL OPPORTUNITIES.—Flour mill, wire fence factory, brick yard, steam laundry, cement works (large marl deposits 18 miles), paint works, foundry, tile and sewer pipe works. Town offers free sites for factories and exemption from taxes. Write Union Bk.

**CARTWRIGHT**, on C.P.R., 149 miles from Winnipeg. Hotel. 3 churches, intermediate school, 3 elevators (85,000 bushels), bank, newspaper, creamery, livery stable, laundry, automobile livery and garage. Pop. 400.

SPECIAL OPPORTUNITIES.—Grist mill. Write Clerk of Municipality or Sec. Bd. Trade.

**CRYSTAL CITY**, on C.P.R., 130 miles s.w. of Winnipeg, on Crystal Creek. Hotel, Citizens \$2. 4 churches, 2 banks, 5 elevators (171,000 bushels), newspaper, livery stable. Duck shooting at Rock Lake, 12 miles. Alt. 1,513. Pop. 630

SPECIAL OPPORTUNITIES.—Brick and cement plant. Write Sec. Bd. Trade.

**CYPRESS RIVER**, on C.P.R., Souris branch, 95 miles w. of Winnipeg. Hotel. 3 churches, 5 elevators (150,000 bushels), lumber yard, newspaper, 2 livery stables, 1 bank, 1 high school, doctor, 2 general stores, drug store. Alt. 1,232. Pop. 500.

SPECIAL OPPORTUNITIES.—General hardware.

**DAUPHIN**, on Vermillion River and C.N.R., 178 miles n.w. of Winnipeg. Hotels, King's, Grand View, Hamilton \$1.50, \$2. 7 churches, collegiate and 2 public schools, hospital, 2 opera houses, 4 banks. Town owns elec. light, gravitation water system and sewerage. Flour mill, 6 elevators, 2 machine works, 2 creameries,

## DESCRIPTIONS OF TOWNS

2 sash and door factories, warehouse and tanks of Imperial Oil, Ltd., mineral water factory, rink. Good fishing in Lakes Dauphin and Winnipegosis, big game in Riding Mountain Forest Reserve. Pop. (Dom. Census) 1916, 3,200.

**SPECIAL OPPORTUNITIES.**—Dauphin has raw material for cereal mills, biscuits, furniture, tannery, glue, hinder twine, cheese, brewery, soap, strawboard, pulp, bricks, pickles, packing house. Write Sec. Bd. Trade.

**DELORAINÉ**, on C.N.R., C.P.R., 202 miles s.w. of Winnipeg. Hotel, Rivière \$2.50. 5 churches, school, 2 hanks, machine shop, gas co., 1 flour mill, 4 elevators, newspaper, 2 garages, 10 stores. Alt. 1,644. Pop. \*808. Write Union Bk.

**DOMINION CITY**, on Rosseau River and C.P.R., 56 miles s. of Winnipeg. Hotel, Queen's \$2.00. 3 churches, 6-roomed consolidated school, opera house, 3 elevators (60,000 bush.), bank, 1 flour mill, telephone, newspaper, 2 liverys, garage and auto livery, restaurant, 3 stores. Alt. 787. Pop. 500.

**SPECIAL OPPORTUNITIES.**—Creamery. Write Municipal Clerk.

**ELGIN**, on C.N.R., 167 miles s.w. of Winnipeg. 2 restaurants. 1 bank, 5 churches, 2 garages. Alt. 1,530. Pop. 500. Write Can. Bk. of Commerce.

**ELKHORN**, on C.P.R. main line, 200 miles w. of Winnipeg. Hotel Manitoba. Abundant supply of good water, 8-roomed high school, county court, bank, 3 churches, printing office. 2 lumber yards, 3 implement agents, 2 livery stables, garage, drug store, municipal telephone, cement sidewalks, agricultural society, skating and curling rink, 3 elevators, 4 general stores. A fine mixed farming district. A.F. & A.M., C.O.F. and I.O.O.F. societies. Race track, rifle association, lawn tennis and baseball clubs. Alt. 1,630. Pop. 600. Write Sec. Bd. Trade, Elkhorn.

**ELM CREEK**, on C.P.R. Souris line and branch to Carman, 46 miles w. of Winnipeg. Hotel, Grandview. 3 churches (Ang., Pres., Meth., R.C.), 1 school, 3 elevators (70,000 bush.), 1 bank, lumber yard, 2 implement agencies, livery, 2 garages, curling rink, pool room, laundry, 3 general stores, 3 implement agencies, lumber yard, 2 garages, harness repair, shoe shop, 8 other stores. Pop. 400.

**SPECIAL OPPORTUNITIES.**—Doctor. Write Bk. of Hamilton.

**EMERSON**, on Red River and C.P.R., C.N.R., G.N.R., N.P.R., and Soo line. Hotels, Russell House, \$3.50, Anglo-American \$2.50. 4 churches, 2 public schools, custom and immigration offices, R.N.W.M. Police barracks, \$37,000 Court House and Town Hall, municipal rink, bank, elevator, farming, dairying and ranching, cement block plant, 2 vulcanizing plants, lumber yard, 2 livery stables, garage, 1 auto livery, 14 stores, newspaper. Alt. 792. Pop. 1,100.

**SPECIAL OPPORTUNITIES.**—Creamery, garage, elec. light co. Write Sec. Bd. Trade.

**GILBERT PLAINS**, on Valley River and Can. Nat. Ry., 198 miles n.w. of Winnipeg. Hotels, Commercial, King Edward. Govt. phone, long distance, local and rural. 3 churches, consolidated school, brick yard, newspaper, creamery, 2 implement dealers, 2 lumber yards, 3 livery stables, 4 elevators (130,000 bushels), 2 banks. Plan is projected to make an artificial lake for power and picturesque resort. Neighborhood supplies marl, brick clay, spruce, tamarack, poplar. Large cattle and hog industry. Good farming country. Big and small game. Alt. 1,314. Pop. 575.

**SPECIAL OPPORTUNITIES.**—Flour mill. Abundant water power available, easily developed. Write Sec. Bd. Trade.

**GIMLI**, on Lake Winnipeg, on C.P.R., 56 miles n. of Winnipeg. Hotel, Como. 2 churches (Luth., Unit.), brick school (high and elementary), Govt. telephone, lumber yard, livery stable, drug store, 6 stores, Riverton Fish Co., bakery, park. A growing summer resort. Good bathing and boating. Pop. 900.

**SPECIAL OPPORTUNITIES.**—Saw mills, planing mills. Write Postmaster.

**GLADSTONE**, on C.P.R. and C.N.R., 35 miles from Portage la Prairie. Hotels, Alhambra, Travelers \$1.50. 4 churches (Ang., Pres., Meth., Bapt.), public and high schools, 2 banks, 3 elevators, sash and door factory, flour mill, machine shop, telephone, 2 livery stables, newspaper. Alt. 884. Pop. 782. Write Sec.-Treas., Gladstone.

**GLENBORO**, on C.P.R., 105 miles s.w. of Winnipeg. Hotel, Leland. 3 churches (Ang., Union, Luth.), high school, 3 elevators (90,000 bushels), telephone, lumber yard, 2 banks, creamery. Alt. 1,231. Pop. 475.

**SPECIAL OPPORTUNITIES.**—Grist mill. Write Mgr. Union Bank.



## DESCRIPTIONS OF TOWNS

**GRAND VIEW**, on C.N.R. main line, 30 miles w. of Dauphin. 3 churches, 5 elevators, lumber mill (120,000 ft. per day), machine shop, 2 banks, hotel, intermediate school, \$10,000 theatre, municipal waterworks and sewer system, granolithic sidewalks. Centre of fertile farming district. Duck mountains on north, heavily timbered, chiefly spruce, abounding with game. Alt. 1,431. Pop. 800.

**SPECIAL OPPORTUNITIES**.—Creamery, stove factory, box factory, brick yard. Write Can. Bk. of Commerce.

**GRETNA**, on C.P.R. and Midland div. G.N.R., 70 miles from Winnipeg. Hotels, Queen's, King Edward \$2.50. 6 elevators (103,000 bushels), telephone, lumber yard, newspaper, livery stable, customs and immigration office, 3 churches (Pres., Luth., R.C.). Alt. 829. Pop. \*575.

**HAMIOTA**, on C.P.R. Miniota branch, 50 miles n.w. of Brandon. Boarding house, 6 elevators (162,000 bushels), flour mill, 3 churches, 2 banks, large public school, telephone, acetylene gas for domestic light, 2 lumber yards, newspaper, 2 livery stables, 2 large stores, 4 implement warehouses. Alt. 1,696. Pop. \*565.

**SPECIAL OPPORTUNITIES**.—Jewelry store, harness maker. Write Union Bk.

**HARTNEY**, on Souris River and on C.N.R. and C.P.R. Estevan branch, 40 miles from Brandon. Hotel, Willard \$2.50. 4 churches, school, 2 banks, opera house, 5 elevators, brick plant, telephone, 2 lumber yards, 2 garages, 3 general repair shops. Seven lakes within 20 miles furnish good goose and duck shooting. Pop. 630.

**SPECIAL OPPORTUNITIES**.—Development of electric power in Souris River. Write Sec.-Treas. Bd. Trade.

**HOLLAND**, on C.P.R., 86 miles w. of Winnipeg. Hotel. 3 churches (Ang., Pres., Meth.), high school, 5 elevators (330,000 bush.), flour mill, telephone, lumber yard, livery stable, newspaper, 1 bank. Alt. 1,237. Pop. 300.

**SPECIAL OPPORTUNITIES**.—Creamery, elec. light, brick plant, good clay nearby. Write Sec.-Treas. of Victoria Municipality, Holland.

**KILLARNEY**, on C.P.R. Napinka branch, 164 miles s.w. of Winnipeg. Hotels, Leland, Melville. 4 churches, 2 banks, town hall and opera house, 4 elevators, creamery, 2 liverys, newspaper, restaurant, 4 garages, flour mill, laundry, lumber yard, 1 sash and door factory,

## INDUSTRIAL OPPORTUNITIES

69

1 machine shop, telephone, electric light and power plant, public and high schools, Govt. Experimental Fruit Farm. An exhibition held here annually. Fine lake here, makes a good summer resort. Good fishing and boating. Alt. 1,625. Pop. over 1,200.

**SPECIAL OPPORTUNITIES.**—Creamery, laundry. Write Sec. Bd. Trade.

**MACGREGOR**, on C.P.R., 78 miles w. of Winnipeg. Deer Station on G.T.P.,  $\frac{3}{4}$  mile distant. Hotels: Stanley \$1.50, Grandview \$1.50. 2 churches, public and high school, bank, newspaper, 3 elevators. Pop. 700.

**SPECIAL OPPORTUNITIES.**—Flour mill, brick plant, good hotel, creamery. Write Mgr. Merchants Bank.

**MANITOU**, on C.P.R., 102 miles, s.w. of Winnipeg. Hotel, Manitou House \$2.50. 5 churches, public and Normal schools, new \$30,000 consolidated school, county court, opera house, skating and curling rink, acetylene gas for domestic use, cement sidewalks, good fire protection. Agric. society, newspaper, 2 banks, 4 elevators, flour mill, 2 liverys, 2 garages, 2 lumber yards, 5 implement agents, harness shop, 3 general stores and 15 others. Surrounded by rich mixed farming district. Abundant supply of exceptionally pure water at from 10 to 30 feet. Pop. 639.

**SPECIAL OPPORTUNITIES.**—Oatmeal mill, creamery, aerated water plant, pork packing. Write Sec. Bd. Trade.

**MELITA**, on Souris River and C.P.R., 67 miles from Brandon. Hotels Metropolitan, Commercial \$2.50. 4 churches, high school, Land Titles Office, 3 parks, one on Souris River used for plenties, 4 elevators (130,000 bush.), flour mill, 2 garages, 2 machine shops, telephone, 2 lumber yards, 2 banks, newspaper, creamery, 3 livery stables, 21 retail stores, electric light. There are strong indications of natural gas. Alt. 1,410. Pop. 900.

**SPECIAL OPPORTUNITIES.**—A milling plant for sale is a money maker for the right man. Write Sec. Bd. Trade.

**MIAMI**, 80 miles s.w. of Winnipeg, at foot of Pembina Mts., on Miami-Somerset branch of C.N.R. Govt. telephone. Hotel, Grandview \$1.50 and up. 3 churches, 2 elevators, 1 lumber yard, creamery, several stores, 1 bank, 1 school. Good district for mixed farming. Pop. 400. Write Sec. of Thompson Municipality, Miami.

**MINNEDOSA**, on Little Saskatchewan River, a div. and terminal point of C.P.R. Minnedosa branch, 79

**HYDRO  
CITY**

# — Portage la Prairie —

**RAILWAY  
CENTRE**



## Part of Railway Yards, Etc.

The centre of the Portage Plains.  
A world-famous agricultural district is now able to offer Hydro power at the cheapest rates.

Three transcontinental railways.  
Rail outlets in ten directions.  
Living conditions unexcelled.  
In Canada's central province.

*Read description of Portage la Prairie on page 73. For further information communicate with*

**Secretary of Board of Trade, Portage La Prairie, Manitoba**

miles w. of Portage la Prairie. Hotels, Tremont \$2.50. Minnedosa \$2.50. 5 churches, hospital, 3 banks, 5 elevators (126,000 bush.), 2 lumber yards, electric light, telephone, 1 newspaper, 3 livery stables, 2 garages. Centre of Northern judicial District. Summer resort with boating, bathing and fishing. Alt. 1,671. Pop. 1,831.

**MORDEN**, on Cheval Creek, Midland Ry., connecting with G.N.R. to south on C.P.R. 81 miles s.w. of Winnipeg. Hotel, 5 churches and synagogue, large public and high schools, fine post office, 2 banks, electric light plant owned by town, 3 elevators (90,000 bush.), up-to-date creamery, chop mill, flour mill, cement block plant, telephone, 2 lumber yards, 1 newspaper, 3 livery stables, pump factory, court house and jail, \$35,000 Federal Bldg. completed 1915, veterinary surgeon, garage, hospital (22 beds), Nurses' Home and isolation hospital. Good farming district. Dom. Govt. 320-acre experimental fruit farm nearby. Cement deposits 14 miles distant. Alt. 988. Pop. 1,500.

**SPECIAL OPPORTUNITIES.**—Dairying and mixed farming. Write Sec. Bd. Trade.

**MORRIS**, on C.P.R., C.N.R., G.N.R. and N.P.R., 40 miles s. of Winnipeg, on Red River. Hotel, Commercial \$2.00. 5 churches, school, 1 bank, 4 elevators (120,000 bush.), telephone (largest exchange in Manitoba except Winnipeg), lumber yard, newspaper, 2 livery stables, 2 machine shops, gas plant, 3 general stores. Surrounded by a rich grain growing, stock-raising and dairying district, of which less than half is under cultivation. Good land obtainable at \$20 to \$40 per acre. Alt. 773. Pop. 700.

**SPECIAL OPPORTUNITIES.**—Beet sugar factory, wholesale distributing warehouse for farm machinery. Write Sec. of Town of Morris.

**NAPINKA**, on C.P.R. Pembina branch and Estevan and Tilson branch, 60 miles from Brandon. Hotels, Leland, Russell, \$1.50. 3 churches (Ang., Pres., Meth.), 2 public schools, 4 elevators (122,000 bush.), telephone, newspaper, 1 lumber yard, 2 livery stables, 1 garage, laundry, about 12 stores, 1 bank, machine shop, blacksmith, Ford agency. Pop. 326.

**SPECIAL OPPORTUNITIES.**—Machine shop. Write Sec. Bd. Trade.

**NEEPAWA**, on White Mud River, on C.N.R. (div. pt.), and C.P.R., 61 miles n.w. of Portage la Prairie, 117 miles n.w. of Winnipeg. Hotels, Hamilton, Alguire \$2.50. 4 churches, 2 public schools and collegiate, 4 banks, 2 elevators. C.N.R. terminals and shops,

oatmeal mill (300 hbls. capacity), 1 machine shop, brick plant, sash and door factory, creamery, granite works, 2 newspapers, 3 livery stables, 4 garages. Town owns electric light system and waterworks. Big game in Riding Mountains. Centre of a rich agricultural district. Summer fair of the N.W. Agric. and Art Association is held here. Alt. 1,209. \*Pop. (Dom. Census) 1916, 1,854.

**SPECIAL OPPORTUNITIES.**—Steam laundry, cold storage. Town gives free sites and special tax rates to industries. Write Sec. Bd. Trade.

**NINGA**, on C.P.R., 175 miles w. of Winnipeg. Hotel, Turtle Mountain \$2. 4 churches, high school, public hall, 4 elevators (127,000 hush.), 1 bank, telephone, newspaper, livery stable. Pop. 300.

**OAK LAKE**, on C.P.R. main line, 165 m. w. of Winnipeg, 32 m. w. of Brandon. Hotel, Oakland \$2.50. 4 churches, high school, park and playground, agricultural grounds and buildings, bank, newspaper, skating and curling rink, cement sidewalks, municipal telephone, 4 elevators (129,000 hush.), flour mill, machine shop, 2 lumher yards, 2 livery stables, 2 implement agents, 3 general stores, 2 hardware stores, drug store and several others, restaurant. A rich mixed farming district. Excellent duck and goose shooting. Lawn tennis club (good shale courts), A.F. & A.M., I.O.O.F. and C.O.O.F. lodges. Exceptionally pure water supply at depths of from 2 to 10 feet. Alt. 1,415. Pop. 800. Write Sec. Bd. Trade.

**PILOT MOUND**, on C.P.R., 126 miles s.w. of Winnipeg. Hotel, Queen's \$1.50. 4 grain elevators (188,000 hush.), 3 churches, school, telephone, 2 hanks, lumher yard, 12 stores. Alt. 1,551. Pop. 500.

**SPECIAL OPPORTUNITIES.**—Flour mill, creamery, foundry. Write Bk. of Hamilton.

**PLUMAS**, on Jordan Creek, on C.N.R. main line, 107 miles w. of Winnipeg. 70 miles from Dauphin. 2 boarding houses, 3 churches, \$25,000 consolidated school, park, bank, 2 elevators, 1 livery stable, 1 lumher yard, cement brick plant, feed mill, 3 implement warehouses, blacksmith, 7 stores, 1 newspaper, garage, opera house. Pop. 350. Write Royal Bank.

**PLUM COULEE**, on C.P.R. and G.N.R. Midland branch, 66 miles s.w. of Winnipeg. Hotels, Queen's, Commercial. 1 church, 1 school, 7 elevators, telephone, lumher yard, 2 livery stables. Alt. 834. Pop. 460.

**SPECIAL OPPORTUNITIES.**—Creamery, flour mill. Write Sec. Bd. Trade.

**PORTAGE LA PRAIRIE**, 56 miles w. of Winnipeg, 15 miles s. of Lake Manitoba, with its fisheries, and in season, summer resort and bathing beach. On main lines of four transcontinental railway systems—the C.P.R., C.N.R., G.T.P. and the G.N.R. Hotels, Portage \$3.00, Empire \$2.00, Albion \$2.00, Rossin (meals only, 50c.). 6 banks, County buildings, court house, General Hospital, Home for Incurables, Provincial Training School, Old Folks' Home, Indian School, armoury, drill hall, two country clubs. Industries, grain elevators (7), flour mills (2), bricks (2), lumber yards (2), threshing machines and farm implements (4), structural castings, corrugated iron culverts, automobile garages (3), steel grain bins, oatmeal mills, pumps, sashes and doors, pickle factory. The neighborhood supplies sand and clay for brick and cement blocks and rough wood. City owns up-to-date water-works, sewerage plant and electric plant. Very cheap power will be supplied from Winnipeg by the Power Commission (see Water Powers). A popular summer resort. The city owns extensive rich wooded park lands. Island Park is most attractive. Alt. 854. \*Pop. 5,860.

**SPECIAL OPPORTUNITIES.**—Manufacture of straw-board and paper boxes, biscuits, starch, pickles, gasoline engines, automobiles, shoes, knitted goods, pianos, overalls, furniture, canneries, wholesale leather goods. City offers free factory sites adjoining 4 great rys., tax exemption or fixed assessment for 20 years when 15 or more hands are employed. Several large firms have already moved from larger cities and put up substantial buildings here. Others propose doing so at an early date. Write Sec. Bd. Trade, Portage la Prairie, for maps, booklets, etc.

**RAPID CITY**, on Little Saskatchewan River, on C.P.R. (div. pt.), C.N.R. 6 miles n. of Brandon. Hotel. 5 churches, public school, bank. Town owns electric light plant. 4 elevators and 1 warehouse (120,000 bush.). 2 lumber yards, newspaper, 2 livery stables, creamery. Three water powers, total estimated 40,000 h.p. Alt. 1,580. Pop. 750.

**SPECIAL OPPORTUNITIES.**—Oatmeal mill, sash and door factory, laundry. Write Sec. Bd. Trade.

**TRESTON**, on C.P.R., 200 miles from Winnipeg. Boarding house, bank, 1 school, 4 churches, telephone, 4 elevators (112,000 bushels), town electric light plant, 2 livery stables, newspaper, laundry, 2 lumber yards, county court office. Good camping grounds 2 miles distant. Pop. 500.

## DESCRIPTIONS OF TOWNS

**SPECIAL OPPORTUNITIES.**—Flour mill, creamery. Write Sec. Bd. Trade.

**RIVERS**, on Little Saskatchewan River, on G.T.P. First div. pt. w. of Winnipeg (142 miles). C.P.R. station at Wheatland (3 miles), on Brandon-Lenore branch. 4 churches (Ang., Meth., Pres., Greek-Luth.), consolidated school, town and firehall, agric. fair grounds, Govt. local and long dist. telephone, good water supply, newspaper, bank, elevator, lumber yard, auto. livery, Ford Agency, 2 general stores, 2 hardware, 14 others. Important coal supply station for G.T.P. main line. G.T.P. monthly payroll \$15,000. A rich grain-growing and mixed-farming district. Deposits of sand and gravel. Football, basehall, hockey, tennis and gun clubs. Pop. 700.

**SPECIAL OPPORTUNITIES.**—Cement block plant, flour, oatmeal and grist mills. Hotel. Development of water power on Little Saskatchewan River, 1 mile from town. Write Can. Bank of Commerce.

**ROLAND**, on C.N.R. and G.N.R. (Midland), 62 miles s.w. of Winnipeg. Hotel, Commercial \$1.50. 3 churches, high school, 2 banks, 1 lumber yard, 5 grain elevators, 3 farm implement warehouses, restaurant, 8 stores. Alt. 855. Pop. 600.

**SPECIAL OPPORTUNITIES.**—General store. Write Sec.-Treas. Roland.

**ROSENFELD**, on C.P.R., 57 miles from Winnipeg. 3 elevators (60,000 bush.), telephone, lumber yard, livery stable, 2 general stores. Write Agent C.P.R.

**ROSSBURN**, 90 miles from Brandon, on Rosshurn branch of C.N.R. Hotel, Queen's \$1.50. 4 churches (Ang., Pres., Meth., Apostolic), 1 school, 3 elevators, 1 bank, 2 implement agents, hardware, harness shop, drug store, 5 general stores, millinery, furniture and undertaker's, lumber yard, 2 livery stables, garage, flour mill. Farm lands from \$12 to \$35. Pop. 350.

**TRUSSELL**, on C.P.R. and C.N.R. 225 miles n.w. of Winnipeg. Hotels, Queen's, Grand Central. 4 churches, high school, 5 elevators, municipal electric light plant, 2 banks, creamery, 2 lumber yards, picture theatre, veterinary, newspaper, 2 livery stables, 2 doctors, 1 butcher, 4 general stores, hardware, drug store, 2 garages. Good farming land. Alt. 1,832. Pop. 850.

**SPECIAL OPPORTUNITIES.**—Oatmeal and flour mill, steam laundry, foundry and machine shop. Write Union Bank.

**1ST. BONIFACE**, on Red River, opposite Winnipeg, on C.P.R., G.T.P., G.N.R. and C.N.R. Electric Railway to Winnipeg. Hotels, Norwood, Quebec, St. Boniface \$1. 4 churches, orphanage, boys' academy, convent. Seat of R.C. Archbishop of Manitoba. 3 public schools. 1 Normal, 2 collegiates, college, seminary, 2 hospitals, Old Folks' Home, 2 newspapers, 5 banks, good water system, electric light and cheap power, brick factory, 5 lumber yards and planing mills, quarry, linseed oil mills, 4 elevators, 2 flour mills, 4 sash and door factories. 2 paint factories, maiting, creamery, oil co., tar paper works, ceiling and roofing plant, marble and glass works. Artificial Ice Co., 2 abattoirs, Union Stock Markets. Alt. 756. Pop. 11,000.

**SPECIAL OPPORTUNITIES.**—All industries connected with live stock trade. Abattoirs, meat packing, tanneries, etc. Write Sec Bd Trade.

**ST. CLAUDE**, on C.P.R., 61 m. s.w. of Winnipeg. Local and long distance phones. Hotel, school, convent, R.C. church, bank, 2 elevators (66,000 hush.). Distributing station Imperial Oil Co., garage, livery and sales stables, 3 general, 2 other stores, 2 blacksmiths, 3 implements, harness and saddlery, butcher, 2 chopping mills, 2 lumber yards, fuel yard, drug store, cream station.

**SPECIAL OPPORTUNITIES.**—Fruit, laundry. Write Bk. d'Hochelaga.

**SELKIRK**, on Red River, head of Lake Winnipeg navigation and seat of its fishing industry. Summer resort and industrial suburb of Winnipeg. 22 miles n. of Winnipeg, on C.P.R. and Electric Railway, C.N. Ry. to East Selkirk. Hotels, Merchants, Canada Pacific, 7 churches, 3 schools, 2 banks, newspaper, livery, 2 garages, iron rolling mills and electric steel foundries (employing 350 men), saw and planing mill, box factory, 1 wholesale merchandise, 2 navigation companies, 3 cold storage plants, hydro-electric power. Rate,  $\frac{1}{2}$ ¢. to 8¢. per k.w.h. Government shipyards, dry dock, etc. Splendid agricultural, horticultural and dairying district contiguous to city market. Concentrating transshipment point for Lake Winnipeg fishing industry. Handling 7,000,000 lbs. per annum. Receiving point for ores and raw material from Lake. Point of shipment for Rice Lake Gold Fields on Lake Winnipeg. Pop. (Dom. Census) 1916, 3,399.

**SPECIAL OPPORTUNITIES.**—Pulp and paper mill, brick or pottery factory, factories using output of foundries, motor boat factory, match factory, pickle





Main Street, Winnipeg. See page 80.

factory, market gardeners and dairying. Special inducements to manufacturers. Write Bruce Campbell Publicity Commissioner.

**SHOAL LAKE**, on Shoal Lake. 171 miles w. of Winnipeg. Hotels, Lakeview, Alhion. 4 churches, 2 banks, 4 elevators (170,000 bushels), creamery, cement block plant, telephone, 2 lumber yards, newspaper, 2 livery stables, 2 auto garages, 2 harness makers, dentist, tailor, machine shop, vulcaniser, 20 stores. Town owns elec. light system. Boating, fishing and shooting. A summer resort. Alt. 1,793. Pop. 627.

SPECIAL OPPORTUNITIES.—Oatmeal mill. Write Sec. Bd. Trade.

**SOMERSET**, on C.N.R., at junction of Carman-Virden and Morris-Somerset branches, 87 miles s.w. of Winnipeg. Hotel. 4 churches, public and high schools, 2 banks, 3 elevators, 3 general stores, implement agent, 2 blacksmiths, druggist, newspaper, creamery, garage, machine shop. A mixed farming and dairying country. Alt. 1,565. Pop. 450.

**SOURIS**, on Souris River and C.P.R., 31 miles s.w. of Brandon, div. pt. Hotel, King Edward \$2. 2 banks, 4 churches, 3 elevators, telephone, planing mill, public and high schools, flour mill, show case factory, foundry and machine shop, municipal elec. light plant. Waterworks and sewerage system, a fine natural park with good fishing, boating and safe bathing. C.P.R. shops. Alt. 1,400. Pop. (Dom. Census) 1916, 1,845.

SPECIAL OPPORTUNITIES.—Brick plant, laundry, vegetable cannery. Write Union Bank.

**STONEWALL**, on C.P.R. Artorg br., 21 miles n.w. of Winnipeg. Elec. Ry. to Winnipeg. Hotels, Canada Pacific \$2.00. Hudson Bay \$1.25. 4 churches, public school, collegiate institute with agricultural branch, 2 banks, electric light and power plant, 2 elevators, 2 lumber yards, planing mill, 2 stone quarries, 8 lime kilns, newspaper, 2 livery stables, deposits of building stone, lime, gravel and sand. Commercial court and land registration centre. Alt. 826. Pop. 1,300.

SPECIAL OPPORTUNITIES.—Market gardening and milk for Winnipeg market. Mixed farming. Write Bk. Hamilton.

**SWAN RIVER**, on Swan River, 275 miles n.w. of Winnipeg, div. pt. on C.N.R. Winnipeg Prince Albert line and terminus of C.N.R. Thunderhill branch. Hotel, Commercial \$2. 5 churches, \$25,000 high school, public school, agric. fair grounds, park, fire hall, hospital. Town owns sewerage system. 2 banks, elevator

creamery, machine shop, 4 implement agents, 3 liveries, stock yards, wholesale oil distributing plant. Newspaper, photographer, 4 general, 2 hardware and several other stores, 3 restaurants. Extensive timber limits in vicinity, over 86 million feet cut in 1912. The distributing centre of rich stock raising, grain-growing and market-gardening district—fall wheat a feature. Big game shooting and fishing. Tennis, baseball, football, hockey and snowshoe clubs. Pop. 850.

NOTE.—C.N.R. are planning large extensions to yards, roundhouse, etc.

SPECIAL OPPORTUNITIES.—Electric light and power plant, 800 h.p. awaiting development. Pottery plant, brickyard, beet sugar industries, wholesale produce and cold storage warehouse, furniture factory, first-class gents' furnishing store, good confectionery store, good restaurant, blacksmith shop, machine shop, dentist and good business openings in almost any mercantile line. Write for free pamphlets to Sec. Bd. Trade.

**THE PAS**, at junction of Saskatchewan and Opasquia rivers, on C.N.R. Steamers to local points. Hotel Opasquia. Hudson Bay Ry. offices. Municipal telephone, light water and sewerage systems, 3 churches (Ang., Pres., R.C.), public schools, separate Cath. school, community building, jail, hospital, 2 banks, lumber mill (monthly output 5,000,000 ft.) employing 500 men, has its own electric light plant and waterworks. 7 general stores, 13 others, 6 restaurants, newspaper. Dom. Lands agency, Mining Recorder's office, Indian agency, Indian Reserve (500 inhabitants). Neighborhood supplies practically unlimited lumber. Beautiful lake and river scenery, fishing, big and small game. Football, baseball and tennis clubs. Promising discoveries of gold and copper have been made in vicinity. Outfitting point for Beaver Lake and Herb Lake, Sebist Lake and Flin Flon Gold Fields. The fur trade in 1916 amounted to \$250,000. Pop. (assessment 1918) 1,259.

SPECIAL OPPORTUNITIES.—Produce merchants, apartment blocks, paper and pulp industry, fish box factory, brick and tile factory, boat and canoe factory, building houses to sell or rent, market gardeners. Write Sec. Bd. Trade.

**TRANSCONA**, 6 miles e. of Winnipeg, on Can. Govt. Ry., C.N.R., C.P.R., G.T.P.; 150 miles of yard trackage. Hotels, Royal George, Queen's. 6 churches (Ang., Meth., Pres., R.C., Greek), central and 3 public schools, municipal buildings, fire hall, covered rink, theatre, 3 parks, newspaper, telephone, 2 banks. Town owns

water system. Electric light supplied by city of Winnipeg. Electric power, domestic rate  $4\frac{1}{2}$  c. per k.w.b.; industrial 3c. Industries: Planing mill, tar and chemicals, cartridges, paving blocks. Can. Govt. railway shops and roundhouse employ about 2,000 men; G.T.P. Ry. stores. Good dairying country. Football league (6 teams), baseball, hockey and gun clubs. Pop. (Dom. Census) 1916, 3,357.

**SPECIAL OPPORTUNITIES.**—Scarcity of workmen's houses. To manufacturers, cheap sites, good shipping facilities, cheap power. Write Sec. of Town.

**TREHERNE**, on C.P.R. Souris branch. 77 miles from Winnipeg. Hotel, Central. 4 churches (Ang., R.C., Pres., Meth.), public and high schools, 4 elevators (144,000 bush.), lumber yard, 2 banks, flour mill, electric light, newspaper, restaurant, 10 stores. Natural gas in small quantities. Alt. 1,211. Pop. 600.

**SPECIAL OPPORTUNITIES.**—Good hotel, general store. Write Mgr. Bank of Commerce.

**TYNDALL**, 29 miles e. of Winnipeg, on C.P.R. Hotel, Tyndall. 5 churches, public school. Winnipeg elec. power passes within half-mile of town. Industries, 3 lime and stone quarries, 13 stores. Pop. of Tyndall and Garson, 1,000.

**NOTE.**—Railway being surveyed to Rice Lake gold fields.

**SPECIAL OPPORTUNITIES.**—Elevator, development of more quarries. Write the Postmaster.

**WIRDEN**, Jct. of C.P.R. main line and Pheasant Hills branch, terminus C.N.R. branch line, 48 miles w. of Brandon. Hotel, Balmoral. 4 churches, collegiate institute, public school, fire hall, hospital, 4 elevators (200,000 bush.), 3 banks, 4 machine shops, printing plant and newspaper, creamery, cement works. Alt. 1,444. Pop. \*1,818.

**SPECIAL OPPORTUNITIES.**—Sash and door factory, brick and tile plant, apartment house, steam laundry. Free sites and tax exemptions. Write Sec. Bd. Trade.

**WINKLER**, on C.P.R. branch line, 74 miles s.w. of Winnipeg. Hotel, Stanley. Bank, 2 churches (M. B. and Men. Bergtaler), \$12,000 school, 4 elevators, flour mill, telephone, livery stable, auto livery, bank, 3 lumber cos., billiard hall, furniture store, 2 drug stores, printer, 2 blacksmiths, hardware, 6 general stores. Alt. 888. Pop. \*458.

**SPECIAL OPPORTUNITIES.**—Real estate agency, hospital, creamery, laundry, milliner. Write Sec. Treas. of Town.

**WINNIPEG**, at confluence of Red River and Assiniboine River. Capital of Manitoba, 60 miles n. of U.S. boundary. Incorporated as a city 1874. On C.P.R., C.N.R., G.T.P., G.N.R. and N.P. Western headquarters of C.P.R. C.N.R. and G.T.P. Hotels, Royal Alexandra \$3 up, Fort Garry \$3 up, Empire \$3 up, Winnipeg, Leland House \$2, St. Regis \$1.50 up, Seymour \$1.50 up, Strathcona \$1.50 up, and many others. Water transportation on Lake Winnipeg and Red River. The largest grain market in the world. The neighborhood supplies wheat and coarse grains, wool, flax, hides, brick clays, glass sands, spruce timber, gypsum, peat, salt, manganese. Civic power, electric, 60,000 h.p. developed, rates from  $\frac{1}{2}$ c. per kilowatt. Winnipeg Elec. Ry. has 30,000 h.p. developed and 50,000 h.p. under construction. Winnipeg's wholesale turnover exceeds \$250,000,000 annually, with an enormous mercantile territory under development. Clearing house returns, \$106,956,720 in 1901; \$2,362,734,211 in 1918. The C.P.R., C.N.R. and G.T.P. shops are located here. Winnipeg has 513 factories, annual payroll \$13,000,000, employing over 23,000 hands, including clothing, hats, electrical fixtures, tents, boxes, cement, butter, carriages, cigars, confectionery, wire, flour mills, harness, iron works, jewellery, packing houses, soaps, wood fixtures, farm traction engines, steam boilers, structural steel works, planing mills, breakfast foods, rolling mills, cabinets, caskets, tanneries, sugar refineries, dye house, pulp mills, cordage, jute goods, beet sugar, implements, hemp fibre, clay products. Value of annual output of manufactured products, \$54,504,000. Building permits for 3 years ending Dec. 31, 1918, \$6,770,400. Pop. (Dom. Census) 215 in 1870; 42,340 in 1901; 136,035 in 1911; 183,595 in 1919.

**SPECIAL OPPORTUNITIES.**—Factories, foodstuffs, footwear, metal goods, hardware, woodenware, flax, and jute goods, linen mills, agricultural implements and machinery, beet sugar works, chemical works, and all lines of industries, banking, loan companies. Write for free information to Managing Secretary, Board of Trade, Winnipeg, as to manufacturing possibilities in any line of industry.

# —Pioneers in Manitoba

We are actual pioneers in the West. We located in Winnipeg, ahead of steel, establishing originally before the trans-continental railway was built. It was at once an expression of our confidence in the future of Manitoba and the West, a confidence that has been borne out by our rapidly broadening system in an effort to extend the fullest possible measure of banking assistance in Canada and abroad.

Of our 395 branches 76 are in Manitoba.

Information about  
Manitoba will be given by our  
main Winnipeg Branch

## **UNION BANK** OF CANADA

Head Office:  
Winnipeg, Man.

Resources exceed  
\$174,000,000

**Manitoba hard wheat is famous all over the world**



