

RECENT RAND PRODUCTIONS

CANADIAN RAND CO. LIMITED
1105 TRADERS BANK BUILDING
TORONTO, CANADA

THE CANADIAN RAND DRILL CO.

EXECUTIVE OFFICES.

Suite 58, Sovereign Bank Building,
MONTREAL, QUE.

WORKS.

SHERBROOKE, QUE.

BRANCH OFFICES.

TORONTO, ONT.

HALIFAX, N. S.

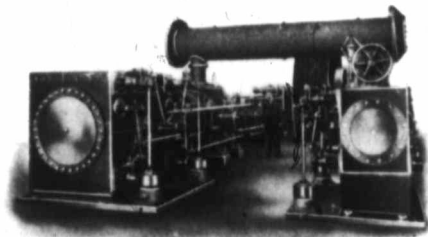
ROSSLAND, B. C.

WINNIPEG, MAN.

VANCOUVER, B. C.

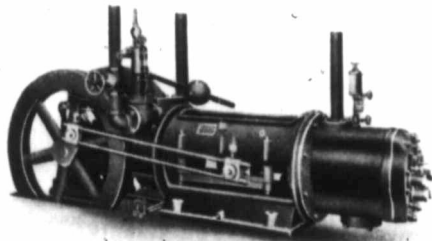
ST. JOHNS, NFLD.

CORLISS AIR COMPRESSORS.



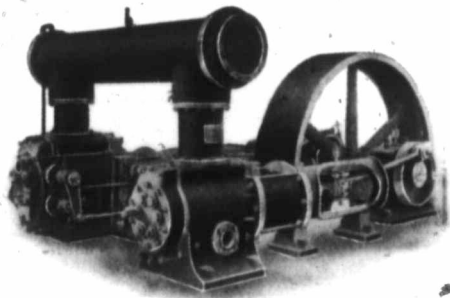
THE efficiency of the Corliss Steam Driven Air Compressor in fuel consumption, automatic regulation and smooth action, is generally conceded by the engineering world. By reason of its strength, durability and reduction of clearance losses to a minimum when running at speeds permissible in air compression, the Corliss engine is especially adapted as the power end of an air compressor.

STRAIGHT LINE STEAM DRIVEN CLASS "C")
(AIR COMPRESSOR



A PORTABLE self-contained machine, extensively used for mining, prospecting, contracting and erection work. It is also designed to be power-driven.

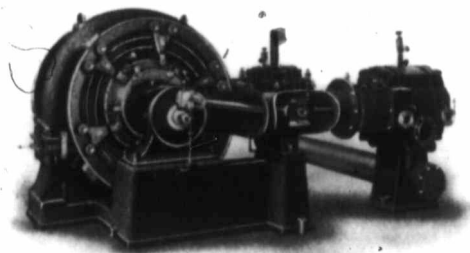
DUPLEX POWER DRIVEN CLASS "D" AIR COMPRESSOR



BUILT both compound and plain duplex. Designed for use in industrial and mining plants where belt power is available. Also designed to be run by rope drive or gear wheel, as desired.

Furnished with unloader, which automatically removes the load, when air is not required.

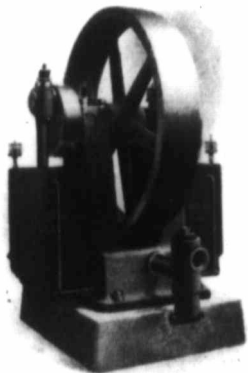
ELECTRICALLY DRIVEN AIR COMPRESSORS



DESIGNED to be operated by individual motor, either by mounting the motor armature on the compressor shaft, or by gearing the motor direct to the compressor by a rawhide pinion on the motor shaft meshing into a heavy balanced gear wheel on the compressor shaft.

Either alternate or direct current motors can be used.

IMPERIAL TYPE XI AIR COMPRESSORS.



COMPACTNESS, simplicity and strength, are the principal features of these machines. Designed especially for use in foundries and other industrial establishments, where but little attention can be given a compressor.

Fitted with automatic unloader.

We can also furnish this compressor to be driven by various motors, through gears, and silent chains.

RAND LITTLE GIANT DRILL



For Mines,
Quarries and
Contracting
Work.

Tripods,
Columns,
Shaft and
Stopping Bars.

"A WORLD
BEATER"





IMPERIAL PLUG DRILLER

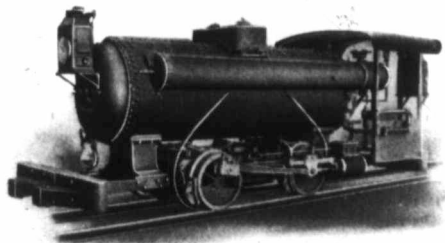
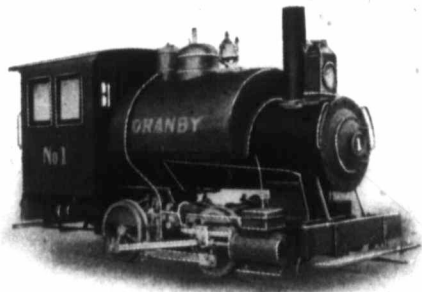
SOMETHING NEW

Will do the work of many men drilling by hand.
No apparatus needed but the operator's hands.
Does not require skilled labor, anyone can run it.

"A MONEY SAVER"

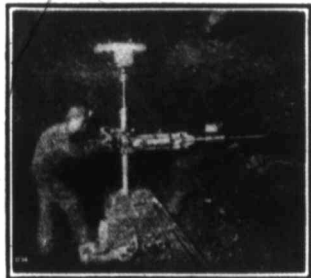
MINE LOCOMOTIVES

STEAM AND AIR

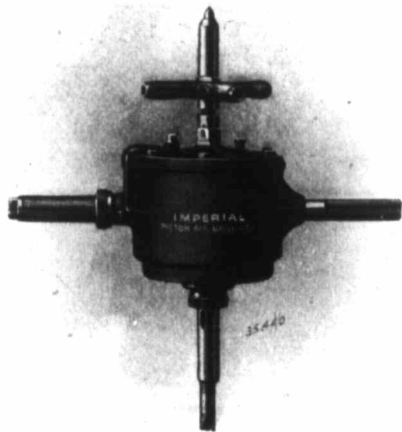


COMplete mine haulage systems installed, including locomotives, compressors, charging stations, pipe line, etc.

COAL MINING
MACHINERY



For
Undercutting,
Shearing,
Boring.

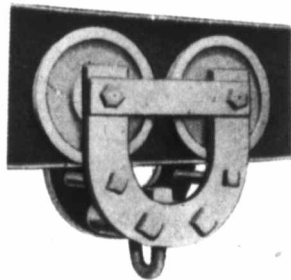


IMPERIAL PNEUMATIC TOOLS

CHIPPERS,
RIVETTERS,
DRILLS,
WOOD BORERS,
STONE CUTTING TOOLS.

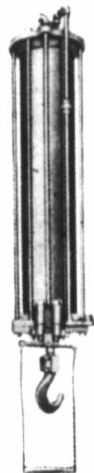
COMPLETE BRIDGE BUILDING OUTFITS

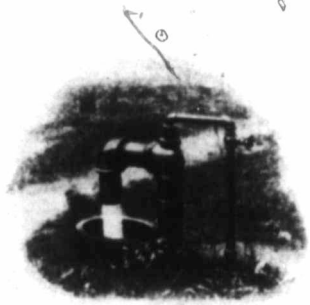
COMPRESSED AIR APPLIANCES



AIR HOISTS, all sizes and capacities
TROLLEYS, plain and geared
CRANES, FREIGHT ELEVATORS
AIR JACKS, Etc.

"EVERYTHING IN AIR MACHINERY"





WE CONTRACT for
the most effective sys-
tems of PUMPING BY
COMPRESSED AIR

"WE CAN PUMP YOUR LIMIT"

CANADIAN RAND DRILL CO.
PUBLICATIONS.

Catalogue A—Air Appliances

“ B—Coal Cutters

“ C—Air Compressors

Catalogue D—Rock Drills

“ E—Rock Drill Mountings

“ F—Imperial Plug Drillers

