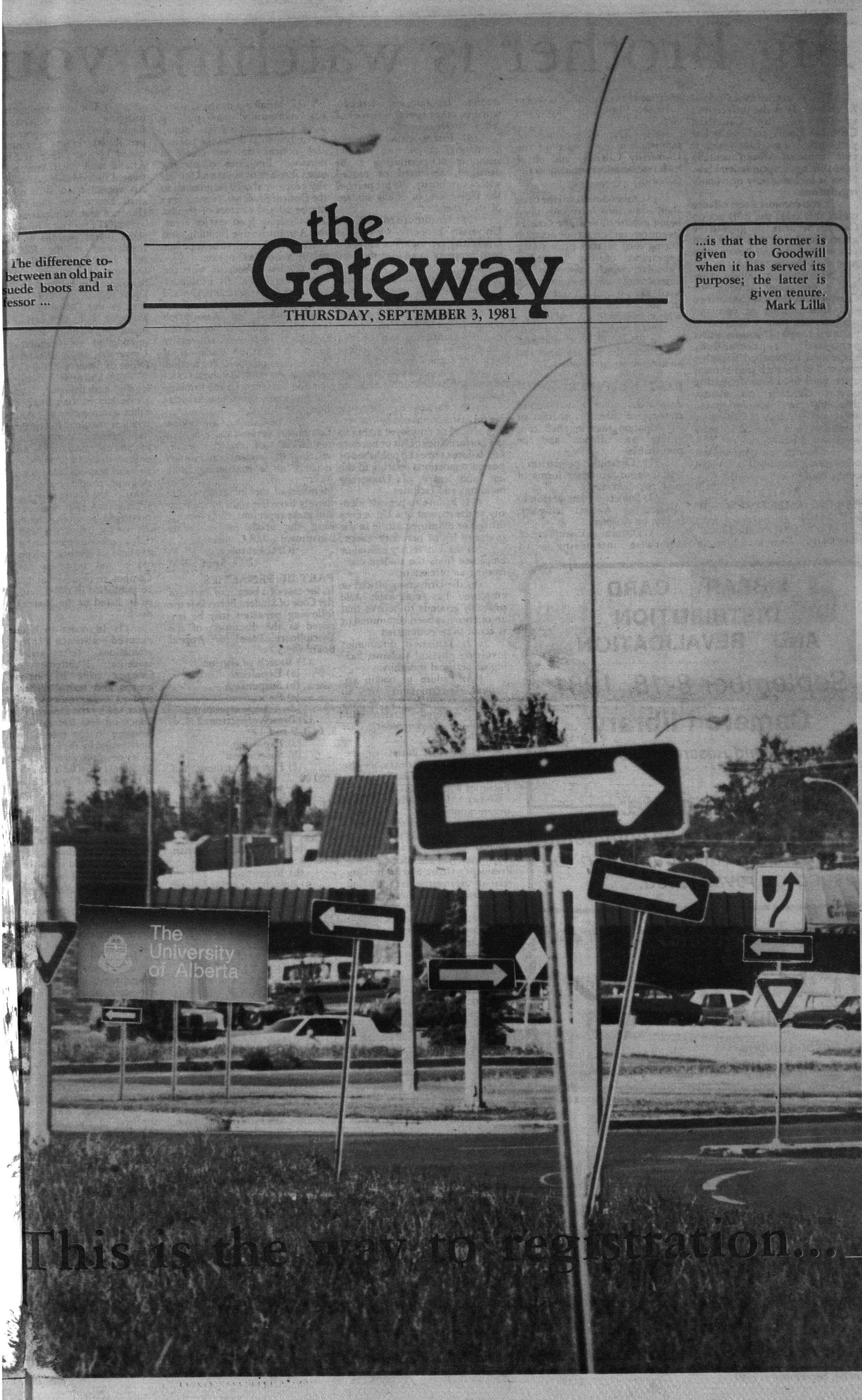


The difference between an old pair of suede boots and a professor ...

# the Gateway

THURSDAY, SEPTEMBER 3, 1981

...is that the former is given to Goodwill when it has served its purpose; the latter is given tenure.  
Mark Lilla



This is the way to registration...

photo Ray Giguere

# Big Brother is watching you

This is the Student Code of Behavior. It is the university's version of the Canadian Criminal Code, and, until last year, included sections which if ever enforced would actually have infringed upon federal law. Now it includes only university regulations.

If you commit a real offense under this code the only action Campus Security (the guys in the green suits) can take is to turn you over to the real police, who may then charge you.

Alternatively, if you commit a university offense, the Campus Law Review Committee will look sternly at you and suggest (see part 3 [section 1, parts a through d]) you are either probated, reprimanded, suspended, or expelled. Breaches that will bring such punishment upon your head include getting caught cheating on exams, drinking in non-designated areas, vandalizing, or otherwise breaking any of the rules enumerated below.

So before you contemplate performing an illegal act, you'd better read this.

## PART I: AMENDMENT OF THE CODE

(1) The Code may be amended by General Faculties Council in

exercise of the authority vested in it by sec. 39 of The Universities Act.

(2) The Code must be published in each issue of the University Calendar and on at least one occasion annually in the Gateway.

(3) Amendments to the Code shall come into force only upon being published with the Code in its entirety on at least one occasion during each session prior to the appearance of the University Calendar which contains the amendments. Such publication shall take place in the Gateway or in another publication having wide circulation on Campus.

(4) The Executive Assistant to the President shall maintain the Official Copy of the Code and all amendments thereto.

## PART II: OFFENCES

Any of the following activities of conduct or attempts thereof or participation therein shall constitute an offence and be punishable:

(1) Cheating, plagiarism, fraud, deceit, or other forms of academic dishonesty.

(2) Subjecting any person to physical or mental indignity, injury, or violence.

(3) Disturbing, disrupting, or otherwise interfering with

studies, laboratories, lectures, work, or other lawful activities of fellow students or staff.

(4) Intentionally damaging, destroying, or moving without authority or permitting to be damaged, destroyed or moved without authority, the property of the University, or of any student or staff member.

(5) Unauthorized use of University property within the University, or use of or entry on such property in an unauthorized manner.

(6) Raiding or unlawful entry of University residences of areas thereof.

(7) Smoking during classes, laboratories and examinations.

(8) Tampering with or misusing of fire or safety equipment including signs and notices.

(9) Participation in unauthorized hazardous activities on Campus.

(10) Failure to obey the lawful instructions of any University official or employee acting in the performance of his or her duty and failure to obey all published or posted regulations relating to the use and entry of University buildings and facilities.

(11) Failure to provide identity at the request of a University official or employee acting in the course of his or her duty where:

(a) The University official or employee finds the student committing an offence or

(b) The University official or employee has reasonable and probable grounds to believe that an offence has been committed or is about to be committed.

(12) Initiation ceremonies involving physical violence, hazing or personal indignity.

(13) Failure to obtain approval, permission or to otherwise follow procedures where required under Administrative Requirements, Part IV of the Code.

(Note: for duties of the Campus Security Services, see the Office of the Vice-President, Facilities and Services).

(2) University clubs, organizations or individuals wishing to invite the general public to on-Campus events or to sponsor off-Campus speakers are responsible for so informing the President's Office and for making related arrangements including space reservations, protection of persons and property, and payment of any related costs.

(Note: additional information may be obtained from the Vice-President, Facilities and Services).

(3) All students living in or attending at a University residence are subject to the rules and regulations of that residence. Rules and regulations in force including any amendments are posted at the business office of the residence, or in the areas affected.

(4) All persons owning, operating or parking vehicles on University property are subject to the current Traffic and Parking Regulations of The University of Alberta. Information about Traffic and Parking Regulations in force, including any amendments, may be secured from the Parking Supervisor's Office.

(5) Persons desiring to carry on commercial activity on property under the government and control of the Students' Union should obtain permission from the Students' Union.

(6) The University of Alberta comes under the preview of the Alberta Fire Prevention Act, R.S.A. 1970 c. 115 and the regulations therein. The University of Alberta Board of Governors has approved and adopted a University Fire and Safety Code that is applicable to students, staff and visitors.

(7) Members of the University community may put up posters and notices on "open" notice boards as long as the posters and notices do not create a nuisance. Enquiries concerning other displays or signs on University property should be directed to the Dean of Students. Notices may not be affixed to trees or shrubs. The libraries, food service areas, the Administrative Building, and University Hall are to be kept free of any but official notices.

(8) By agreement with the Edmonton Musicians Protective Association, orchestras organized and playing on Campus need not consist wholly of Association members, but all orchestras brought in to play for University functions must be made up of Association members. For further information students should contact the Secretary of the Edmonton Musicians Protective Association.

(9) The Campus Law Review Committee reviews the rule and regulations of the University relating to student disciplinary matters on a continuing basis.

Members of the University community have the right to speak to and make representations concerning the above at any duly constituted C.L.R.C. meeting.

(GFC February 24, 1975)  
(B.G. April 1975).

## PART III: PENALTIES

In the case of a breach of Part II of the Code of Student Behaviour the following penalties may be imposed at the discretion of the Disciplinary Panel or Appeal Board (43.3.7):

(1) Breach of section 1

(a) Expulsion  
(b) Suspension  
(c) Reprimand  
(d) Academic probation

(2) Breach of sections 2, 3, 4, 5, 6, 8, 9 and 12

(a) Expulsion  
(b) Suspension  
(c) Fine of not more than 1200.00

(d) Reprimand  
(e) Exclusion from specified areas of the University.

(3) Breach of sections 10 and 11

(a) Fine of not more than \$100.00  
(b) Reprimand

(4) Breach of sections 7 and 13

(a) Fine of not more than 125.00  
(b) Reprimand

## PART IV: ADMINISTRATIVE REQUIREMENTS

In the following sections applications may be conditionally granted or refused.

All applications for approvals to engage in the following activities must be made in writing and shall be approved or rejected with written reasons attached:

(1) The outdoor use of public address systems, loud-speakers, bull horns, or sound trucks on the Campus of the University is not permitted without the prior approval in writing of the Vice-President (Facilities and Services). An appeal shall lie to the President.

(City ordinances apply on the peripheral streets.)

(2) The use of the name of the University of the crest or coat of arms of the University of a University club or organization on any publication without the approval of the President is prohibited. An appeal shall lie to the Chairman of the Board of Governors.

(Note: As a matter of policy the President will not grant such approval to anonymous publications.)

(The unauthorized use of, bringing in or possession of liquor on University premises, is prohibited. Liquor permits are issued by the Office of Student Affairs and each case will be treated individually on its merits. An appeal from such decisions shall lie to the vice-President (Finance and Administration.)

NOTE: For information about liquor permits and liquor regulations in the Residences, refer first to the Office of the Director of Housing and Food Services. For information about liquor regulations in HUB, apply first to the Office of the HUB Manager. For information about liquor regulations and permits relating to other areas of the University, apply directly to the Office of Student Affairs.

(4) University clubs, while legally independent from the University in their financing and other arrangements, are nonetheless required to register with the University through the Office of Student Affairs in order to ensure that the club accepts its share of responsibility for protecting the property and the good name of the University. In return a University club receives certain privileges, including the right to call itself a University of Alberta club, to ask for a place in the year's schedule of events, to apply for rooms and other facilities on Campus, to request that its notices be published in the Gateway, and to be listed in the Student Handbook.

(5) In order to obtain an excused absence from examinations, tests and other academic requirements, off-Campus trips by individuals, groups and teams representing student organizations must be approved by the Dean of Physical Education and Recreation or his designee in the case of athletic matters and by the Deans' Council or its designee in all other cases. An appeal shall lie from a decision of the Dean of Physical Education and Recreation to the Vice-President (Academic).

(6) Permission for the showing of films on Campus, except for those used as part of the academic or academic related programs, must be obtained from the Vice-President (Facilities and Services) who may make regulations from time to time for the aforementioned purpose in conformity with the Alberta Amusements act and other applicable provincial legislation. An appeal shall lie to the President.

(7) University individuals, groups and organizations may advance a cause and distribute or sell related literature or other similar material:

(a) in designated Activity Zones provided the use of the Zones has been reserved in advance with the Vice-president (Facilities and Services). An appeal shall lie to the President.

(b) in the areas other than Activity Zones with the prior approval of the Dean or other administrative officer or committee in charge of the area. An appeal shall lie to the Vice-President (Academic).

(8) Canvassing and soliciting are forbidden on the Campus of the University. Exceptions may be made only by the vice-President (Facilities and Services). An appeal shall lie to the President.

## PART V: ADMINISTRATIVE INFORMATION

(1) University Clubs, organizations, or individuals sponsoring functions on or off-Campus are responsible for maintaining discipline and enforcing liquor and other regulations on the premises where the functions are being held.

**LIBRARY CARD  
DISTRIBUTION  
AND REVALIDATION**

**September 8-18, 1981**


**Cameron library**

*Norma Freifield Reserve Reading Room*

---

**Please note:**

*Registration must be completed  
before a library card can be  
issued or revalidated.*

 **Students' Union  
Employment Opportunity**

**RETURNING OFFICER**

— **Responsibilities:**

- Performance of duties normally required by a Returning Officer (staff recruitment and hiring, poll organization)
- Conduct elections under the "Nominations and Elections Bylaw" (Bylaw 300), or such other elections or referenda as the Students' Council designates

— **Qualifications:**

- Organizational and administrative skills a necessity
- Background of computing knowledge and familiarity with previous Students' Union elections an asset

— **Remuneration:** \$5.00 per hour

— **Term of Office:** Immediately to 31 March 1982

**Application Deadline:** Friday, 11 September 1981, 4:00 p.m.

**For information and/or applications, contact the Students' Union Executive Offices, Room 259 SUB, 432-4236.**

# VARSITY DRUGS & STATIONARY

## HUB MALL'S LARGEST STORE

**J & J  
DENTAL FLOSS  
50 YARDS**  
Waxed, Unwaxed  
extra fine, mint flavored  
**Sale Price \$1.29**

**YORK  
CALCULATORS  
SCIENTIFIC  
CALCULATOR**  
8-digit display in 2 forms  
*OTHER models & styles  
of calculators, including  
TEXAS INSTRUMENT*

A Complete Line of  
School Supplies For  
All University Students  
**OPEN 8 AM**

**Texas Instrument  
Calculator**  
Programmable TI-57  
Reg. Value 79.95  
**Sale \$69.95**

**PHOTOFINISHING  
SERVICE**  
**Large 4" prints available**  
Quality 24 Hour Service


**CONTACT LENS  
SUPPLY CENTRE**  
We Stock a Complete  
Selection of Hard and Soft  
Contact Lens Solutions

**CONVENIENT  
PRESCRIPTION  
SERVICE**

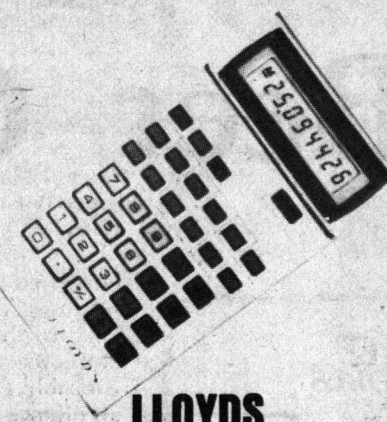
**ONE STOP  
SCHOOL  
SUPPLY  
SHOPPING**

**FABERGE ORGANIC  
SHAMPOO & CONDITIONER**  
All types  
450 ml. bottle  
**Sale Price \$2.39**

**POSTAL  
AGENCY**




**Rx  
ALLOW  
US  
TO FILL  
YOUR NEXT  
PRESCRIPTION**



**LLOYDS  
LCD SCIENTIFIC  
CALCULATOR**  
Ideal Pocket Size

**TIMEX WATCHES**  
**— 30% Off  
Suggested Retail**

**3 - RING VINYL BINDERS**  
- STRONG sturdy vinyl with booster  
- high quality  
1 1/2" ring Reg. 4.79 **Sale - \$3.49**  
2" ring Reg. 5.99 **Sale - \$4.69**



**NoNonsense**  
**SHEAFFER PENS**  
- A large selection of  
SHEAFFER writing instruments  
including 'NoNonsense'  
Ballpoint and fountain pens

**PAPERMATE  
ERASERMATE  
PEN**  
- the only pen that  
erases mistakes  
Reg. Value 2.49  
**Sale Price \$1.79**

**PAPERMATE  
FLAIR**  
- nylon tip  
Reg. Value .89  
**Sale Price .59¢**

**PAPERMATE  
MALIBU**  
Ball point Pen  
Reg. Value 1.98  
**Sale Price \$1.49**

**UNIBALL  
by FABER CASTELL**  
- New rolling writer  
Reg. Value 1.50  
**Sale Price .99¢**

**PINPOINT**  
- ultra fine  
plastic point pen  
Regular Value .99¢  
**Sale Price .79¢**

**PENTEL  
MECHANICAL  
PENCILS**  
**10% OFF Retail Price**  
- A VAST SELECTION of 0.3,  
0.5, 0.7, 0.9 mm pencils

**PENTEL  
ROLLING WRITER**  
- FINE POINT  
regular 98¢  
**Sale Price 79¢**

**RULED  
FIGURING PADS**  
8 1/2 x 11" wide ruled.  
- 96 sheets, #16 white bond  
paper  
Regular Value 1.59  
**Sale Price 99¢**

**LOOSE LEAF  
REFILLS**  
Metric Lined  
200 sheets  
Reg. value \$2.99  
**Sale \$1.99**

**COIL SCRIBBLERS  
8 1/2 x 11"**  
- 88 page - solid plastic cover  
Regular Value 3 for 4.10  
**Sale pkg of 3 - 2.99**

**CIGARETTES**  
ALL  
CANADIAN  
BRANDS  
**Player's**  
**Sale — 6.99/carton**

**COMBINATION  
PAD LOCKS**  
- High Quality - guaranteed  
- ideal for  
STUDENT LOCKERS  
**Sale Price \$2.49**

**COIL SCRIBBLER  
8 1/2 x 11"**  
200 page - glossy plastic cover  
Regular 4.34 for pkg of 2.  
**Sale 2 for \$3.19**

**TYPING PAPER**  
- 1ge 200 sheet pkg.  
- high quality  
Regular \$2.99  
**Sale Price \$1.99**

**VINYL  
FOLD-OVER  
CLIPBOARDS**  
- High Quality  
Regular Value up to \$3.38  
**Sale Price \$2.49**

**KLEENEX**  
Large 200 sheet box  
**Sale Price .99¢**

**LCD SCIENTIFIC  
CALCULATOR**  
LLOYDS #SR 625  
Regular value 49.95.  
**Sale Price \$29.95**

**MEAD  
3 SUBJECT  
COIL  
EXERCISE BOK**  
8 1/2 x 11"  
240 pages  
Regular value 3.85  
**Sale Price \$1.99**

**FLEX  
SHAMPOO &  
CONDITIONER**  
ALL TYPES  
- Large bottle 450 ml.  
**SALE PRICE \$2.39**

**DELSEY  
BATHROOM  
TISSUE**  
- 4 Roll pak  
**Sale Price \$1.79**

**CLEARASIL**  
- skin tone  
or  
vanishing cream  
- 15 g tube  
**Sale Price \$1.49**

**AQUA-FRESH  
TOOTHPASTE**  
- 1ge. 100 ml tube  
with  
- Bonus toothbrush  
**Sale Price \$1.29**

**MILLIONAIRE  
LOTTERY  
TICKETS**  
WESTERN • PROVINCIAL  
LOTO CANADA

**UNICURE SHAMPOO  
AND  
CONDITIONER**  
- large bottle 450 ml.  
**Sale \$1.99**

**SALE PRICES  
IN EFFECT  
UNTIL  
SEPT. 10, 1981**

### footnotes

#### SEPTEMBER 8

LSM 7:30 p.m. Worship at the Lutheran Student Centre, 11122-86 Avenue. All are welcome.

#### SEPTEMBER 9

Men's Intramural Council, organizational meeting room E-120, P.E. & Rec. Complex.

#### SEPTEMBER 13

LSM 10:30 a.m. Worship with Lutheran Campus Ministry in SUB 158. Join us as worship on campus resumes.

#### SEPTEMBER 15

Recreation Sports Clubs organizational meeting Room WI-38 P.E. & Rec. Complex.

### classifieds

Classifieds are 15¢/word/issue. \$1.00 minimum. Deadlines: Noon Monday and Wednesday for Tuesday and Thursday publication. Rm. 238 Students' Union Building. Footnotes and

Classifieds must be placed in person and prepaid.

Daytime typesetter required by Gateway advertising department. Good typing speed (60-70 wpm) essential, typesetting experience preferred, but we will train. Mon. & Wed. 10 a.m. - 6 p.m., Tues. & Thurs, as required. Contact Margriet West, Rm. 238 Students' Union Building.

Typesetter required for evening work (6 p.m. to midnight) by Gateway newspaper. Good typing speed essential (min. 60 wpm), typesetting experience preferred, but we will train. Contact Margriet West, Rm. 238 SUB.

Ushers/Usherettes needed. *Let My People Come*, September 8 to 13, SUB Theatre (8 shows) requires volunteer people (you get a pair of comps). Reply to Gerry, SUB Theatre, 432-4764.

Prof. moving to Europe sells Vega wagon excellent condition (1976 - \$1800 ONO), mattress and base (225), radio and speakers (225) etc. 466-2196 (67) or evening 439-1714.

Would like to join carpool or provide transportation between Sherwood Park and U of A. 432-4789 days.

LANCIA 1976 Beta coupe, 38,000 miles - am/fm cassette. Like new condition. Offers. Days 432-3423, evenings 455-2669.

Paying too much for auto insurance? Call us for low rates and exceptional service. POMBERT INSURANCE AGENCIES, 464-2272.

Incredible Edibles, HUB Mall is now accepting applications for full and part-time employment on counter service. Apply in person to Carlos Raposo

Are you a Backpacker, Cross-Country Skier, Mountain Climber, Canoeist? EDDIE BAUER OUTDOOR OUTFITTERS is looking for outdoor enthusiasts to work part time sales. You must be available Wednesday, Thursday, Friday evenings and Saturdays. Day time hours also available. Phone Ian or Ken 428-7044.

Employment in Dinwoodie Lounge. SAT's, barstaff, cashiers, phone Alex 432-5329, Rm. 274 SUB.

WANTED: Assignment graders in first and second year Mathematics courses. Applications available in CA 632.

3 bdrm main floor, drapes, parking, util. paid. No pets. 434-5164. 106 St. 62 Ave.

Piano instruction by qualified (B. Music) teacher. Phone 462-7601.

Key cut while-u-wait on campus at 9113 HUB Mall. Calculators, watches, sales and repair. Campus Digital Shack.

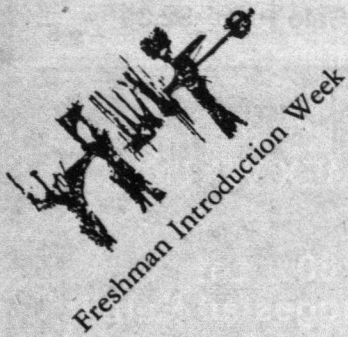
Family near Lister Hall requires after school child care 3 days/week for 2 children. Phone 433-5939.

## THE fashion wheel

Suits: Perfect fashion for any function. In wool blends — sizes 5 to 13 — \$150 and \$220. And for petites, suits sizes 4 to 14 — \$190 and \$220

fashion wheel

8908 HUB MALL 433-5226



# The Beer Gardens

Sept. 8 - 11  
InQuad

...more than a rumor

Tues

BACKSTREET BRATS/THE MODELS

11:00- 12:00

12:30-1:30

2:00-3:00

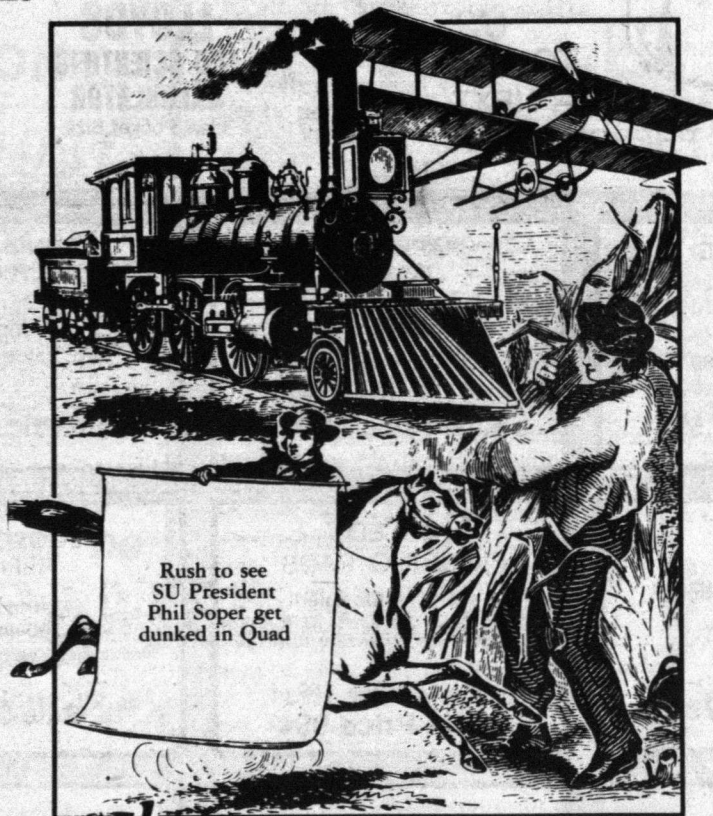
Wed

TOM SEE/HOT COTTAGE

11:00-12:00

12:30-1:30

2:00-3:00



Thurs

THE SNEAKERS/OSCAR WILDE

11:00- 12:00

2:00-3:00

12:30-1:30

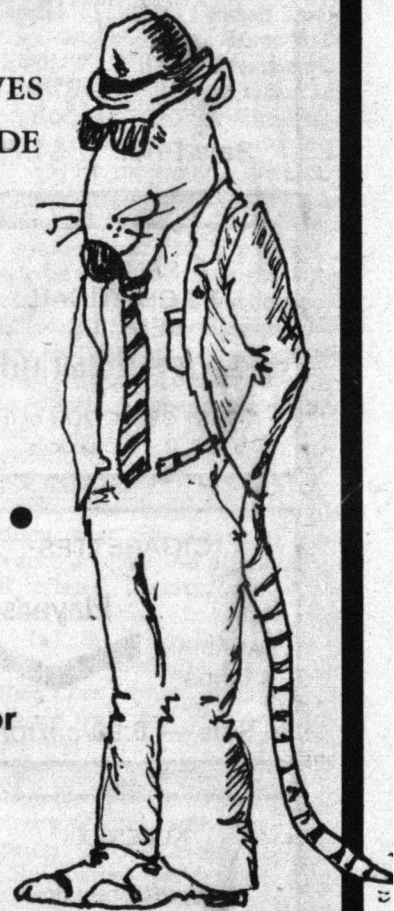
Fri

THE THIEVES  
/TACOY RYDE

11:00-12:00

12:30-1:30

2:00-3:00



## Saturday Night Live!

| ... in Dinwoodie Lounge

# STARRING

This week

## A surprise

# R.A.T.

on 7th floor  
Students'  
Union  
Building

cool the blues away with....

# HOT COTTAGE

Sept. 10-12 8:00 p.m.

# University has much to offer

an interview with Phil Soper

by Wes Oginski

Phil Soper is the Students' Union president for the 81/82 fall term. Last spring, his entire slate took office. He is a fourth year Commerce student and should graduate sometime this term. Wes Oginski is a news editor of the Gateway.

**OGINSKI:** State the function of the Students' Union.

**SOPER:** We exist as a democratically elected organization. We are to provide a service for the students.

That can take many forms. We run retail outlets like the bars and the theatre. They are expected not only to provide a service but also to turn a profit into the services that do not make money, but only cost money, such as the ExamRegistry.

Secondly, we run services just for the student, like the Gateway.

There are 120 clubs registered in the Students' Union. They can all apply for funds, and many receive office space.

External to the Students' Union, the Student Council directed by the executive committee, myself and the four vice-presidents, try to provide some political leadership.

We want to encourage people to get involved and to think along political lines to get broader social issues that do not touch lives on campus but are important because they are citizens of the province, country, and the world. The Students' Union provides an outlet for debate or discussion along these lines.

**O:** What are your responsibilities?

**S:** I chair the executive council which gives a lot of direction to Students' Council. I chair the Nominating Committee that fills positions within the Students' Union organization, and for the General Faculties Council, and various other things. I also chair the Bylaws and Constitution Committee, which deals with our constitution and bylaws and tries to set up a quasi-legal system to make the whole thing work properly.

**O:** When will the new business manager be appointed?

**S:** On Tuesday (September 1), at the Student Council meeting. He has already been reviewed by the hiring committee, composed of myself, Brian, Elise, our external auditor Bert Krull and our advertising manager Tom Wright. We are recommending he be hired. I suspect Council will ratify his appointment. His name is George Ivanisko.

**O:** How accessible is the executive?

**S:** I think all elected officials always talk about their accessibility. The executive is extremely busy and that means Students' Union committees, Council committees, and so on. So we are often out of the office, but that does not mean we are not accessible.

We post office hours and try to keep them. If we are not there, all they have to do is leave a message with the receptionist or leave a note on our desk, and we will indeed get back to them. The doors are always open. If we are there, we will talk to any one.

**O:** When and how are Students' Union decisions made?

**S:** It depends on what kind of decision you are talking about. If you are talking about a policy decision, like the wording on literature for tuition fees, those type of decisions are always taken to Students' Council.

More often than not it originates from within the executive committee, because we are a full-time paid staff. We have the expertise. We have a paid researcher, Stuart McKay, who provides us with further expertise. We would discuss it further in the executive committee, then

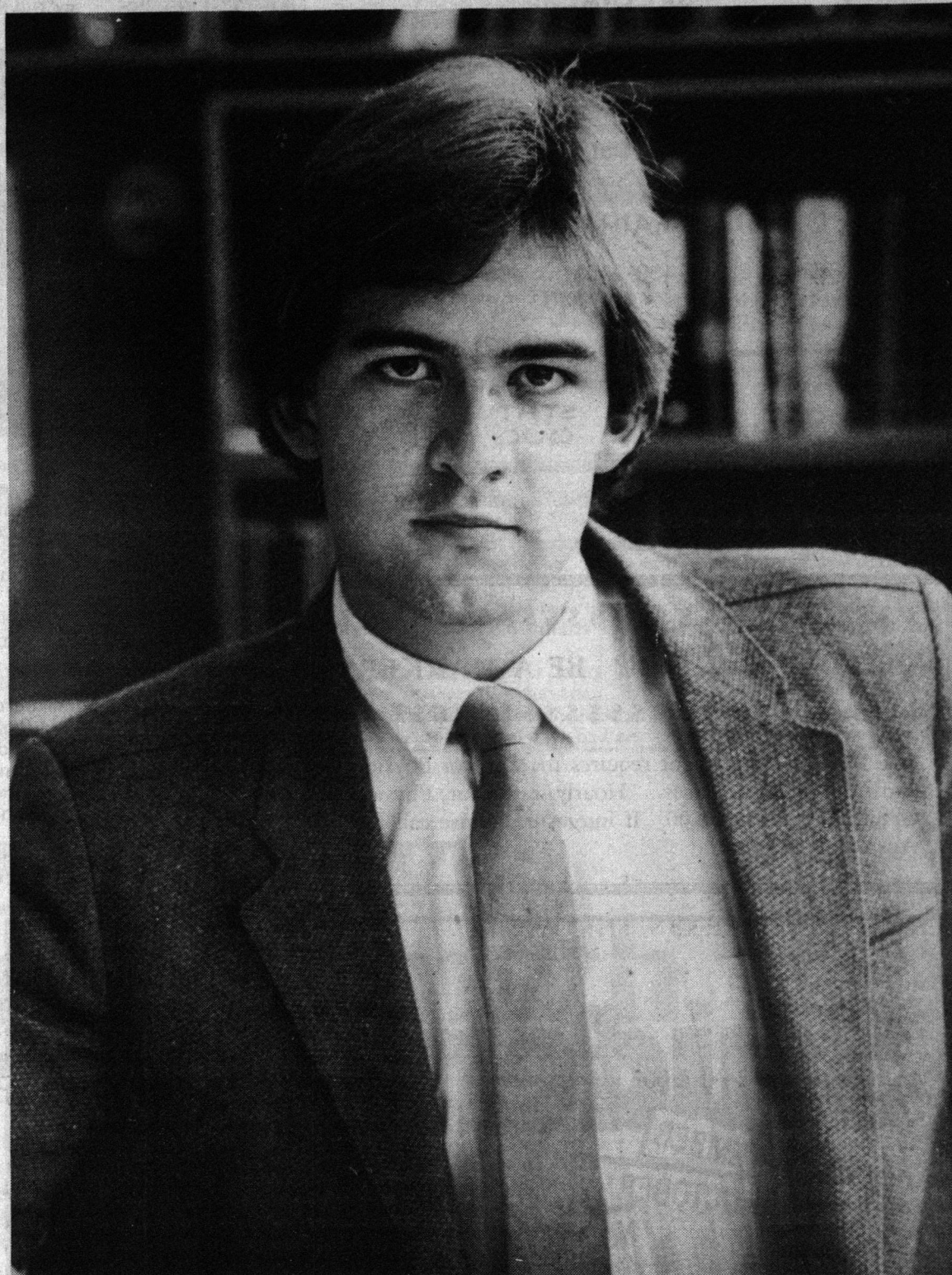


photo by Ray Giguere

SU president Phil Soper says "the door is always open" to people with questions or who wish to get involved. That's Room 259 SUB; don't all come at once.

*In the coming year, the main focus of this Students' Union will be on internal financing ...*

The SU business manager reports to me for matters of general administration and over the summer time, without a business manager, I assumed a lot of those functions.

It is an interesting job because it entails working both internally as well as externally. All the vice-presidents [Lisa Walter, v.p. External; Liz Lunney, v.p. Academic; Brian Bechtel, v.p. Internal; Elise Gaudet, v.p. Finance] can comment and make observations outside their portfolios, but they are all specialists.

The president oversees the operation and gets involved where his or her expertise happens to dictate. So when an issue comes up at the Board of Governors (which I also sit on), they are often political issues like tuition policy. I work closely with the vice-president External and things like ACT and the Federation of Alberta Students. I present a case to the Board of Governors for review.

form of a motion or resolution. If Students' Council accepts that, the decision then would be put to vote.

In the decision making process, there is a built in chance for the student to display his or her problems with a decision. All Student Council meetings are open to all students. We certainly encourage and hope to see students at the Student Council meetings. We meet every second Tuesday through the term at University Hall [across from SUB].

**O:** Are some sessions closed?

**S:** The only time assembly would move into closed session would be matters discussing a personal career. It is a rare occurrence. Like a business transaction that should not be public.

To give you an example, there is a motion next agenda (September 1) that basically says ratify the Selection Committee's

continued to page 7

**CUTS**

## CHRISTMAS CHARTERS

Edmonton to

**VANCOUVER \* TORONTO**

**\$119**

**\$259**

December 22 - January 4

(Subject to gov't approval).

Canadian University Travel Service (CUTS)  
Main Floor, SUB

432-2592

THE NATURAL PLACE TO EAT IN HUB

**LIVING EARTH**  
**NATURAL foods**

HOME-MADE SOUP • SANDWICHES • JUICES

SALADS • plus LOTS OF MUNCHIES!

**SPECIAL STUDENT PRICES**

Men's Shampoo, Cut & Style • \$10  
Ladies Shampoo, Cut & Style • \$14

**CAMPUS HAIR CENTRE**

8625-112 St • 439-2423    439-1078  
University Hospital • 432-8403    432-8404

THE STATUS THAT MOST PEOPLE SEEK.



IS THE STATUS QUO.



NEED EXTRA CASH? BE A MARKER!

The Physics Department requires markers for Physics and Astronomy courses. Hourly rates for Physics Graduates start at \$8.00. If interested, please call D. Austen at 432-3305.

## Obscure places nobody knows about



photo Dave Chan

by John Roggeveen

Now that you've trudged around campus looking for this department or that faculty office, you probably know how to find your way about without getting lost.

Nonetheless, there are still many interesting places on campus you don't know about.

For instance, you probably don't know about the tennis courts at the top of Windsor Car Park unless, of course, you are one of those people who carefully scans every centimeter of your registration booklet hoping to find some way to the Arts Faculty office.

On your way to the top of the car park, you may have passed

what looked like an old red brick house.

Actually, what looked like a house was probably the Ring House Gallery, in which you can find art of all imaginable sorts.

The Ring House Gallery, however, isn't the only place to find art on campus. There's also the Students' Union Art Gallery on the main floor of SUB. But hurry, it may not be there too much longer.

If art makes you hungry, and you're not inclined to fight the crowds of people in CAB or other well-known eating establishments on campus don't despair.

There are at least two other

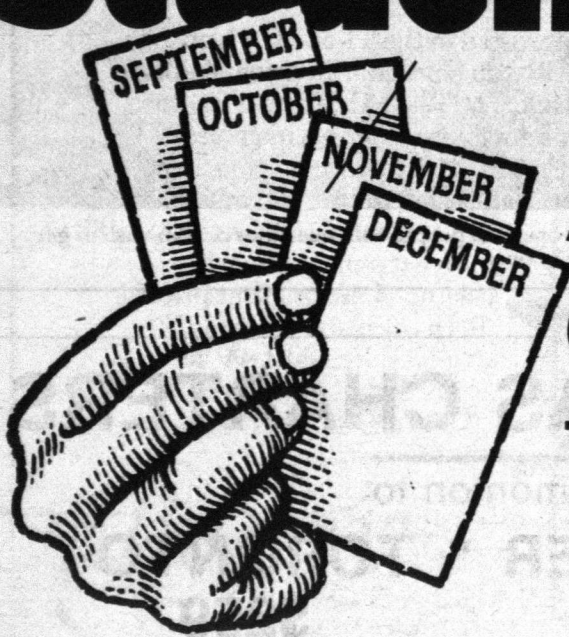
locations you may seek out. On the sixth floor of Humanities, and the fourth floor of Education you can find a cafeteria where the crowds will be much more to your liking.

If you're not interested in art or cafeterias you can spend your time browsing around the greenhouses behind the Agriculture building, between Chem-East and the Tory building. There are also greenhouses in the Agriculture and Forestry Building behind SUB.

Undoubtedly the most interesting place on campus where no one goes is the Gateway office, room 282 SUB.

Drop by some time and see us, eh?

# Student Pak



## All you can ride for \$65

Every trimester, full time post-secondary students can obtain in advance four convenient Edmonton Transit Monthly Passes. Save over the cost of cash rides — the more you use a pass, the more you save. And each pass is transferable to others. Arrange four months of travel NOW, and forget about digging for change, looking for parking, starting stalled cars.

For your September to December Student Pak, bring your course registration or ID card and \$65.00 to your convenient campus outlet. At registration time, it's transit time!

Student Paks are on sale at the Student Union's Box Office in HUB at the U of A, and at other college campuses in Edmonton. Or come to the Edmonton Transit Administration office. The four passes in each Student Pak are available two weeks before the beginning of the month when the package starts.

Ride with us  Edmonton transit

## TYPESETTER

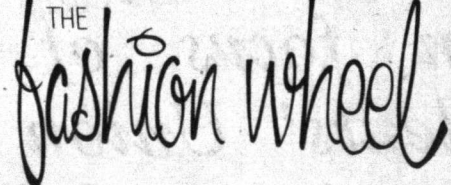
urgently required by the Gateway for evening work.

If you have no experience as a typesetter but are a good typist (60 wpm) we will gladly train you.

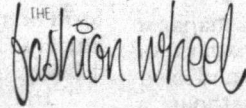
**Hours:** Monday and Wednesday evenings, 6 p.m. to midnight

**Remuneration:** \$5.50-\$6.00/hour

**Apply to:** Room 238, Students' Union Bldg. Ask for Margriet West.

Shirts  Suits

100% Shetland wool crew neck sweaters in beige, grey, medium pink, and wine. Sml. \$22.



8908 HUB MALL 433-5226

*L'express* 

MAIN FLOOR SUB

- GOURMET COFFEES
  - DELI SANDWICHES
- 8:00-4:30 Mon.-Fri.



## more Soper

continued from page 5

decision to hire George Ivanisko for Business Manager. The motion is made in open session but the discussion of the man's merits are in closed session. So when we discuss the man's references, personal career, salary, that will occur in closed session. We will come out of closed session and then vote whether or not to hire the man.

**O:** What do you foresee for this year's student?

**S:** From the Students' Union point of view, we provide a lot of services for the student. Right from records to housing and the exam registry.

In the coming year, the main focus of this Students' Union will be on internal finances, just because we do face such a tenuous situation.

For this year's student, I hope to see a real interest in what is happening with the Students' Union. Last year's general election saw a turn out of about one-third of the student population. It is not great, but it shows a lot better over recent past elections.

I hope that indicates a trend for an increased awareness and desire to become involved in student affairs and politics.

**O:** Where can the student turn with academic or personal problems?

**S:** The vice-president Academic, Elizabeth Lunney, is not averse in any way with helping students individually, who are having problems with academics.

However we do have a special position, the Student Advocate, whose primary function is to do just that. He helps students having problems with appeal processes, professors, and that sort of thing. His name is Kelly Holman.

Personal problems take on a different light. Student Help provides students with counselling and generally someone to talk to. For professional counselling, there is Student Counselling Services in Athabasca Hall.

**O:** Do you have any advice for the first-year student?

**S:** It is so easy to get caught up in the academic turmoil, especially the young student coming out of high school. They forget there is so much else at this university that is offered to them.

We say so often, "come talk to us. Tell us where you want to become involved in the system."

I encourage the first-year students to get involved. There are inter-collegiate sports, an excellent intramural program even after cutbacks, Fine Art Programs, and more.

I can see no excuse for not getting involved. You are certainly taking a narrow view of university education if you do not.

**O:** Does the Students' Union plan any major changes this year?

**S:** This year is going to be a major turning point for the Students' Union. I would like to think that the service we provide to the student will continue to be the same excellent service. Students should be aware that if some drastic changes are not made, the Students' Union of the future may not be as we know it today.

**O:** What about the Fridays' renovations?

**S:** Friday's is going to be renamed. There is some renovation but it will not be totally revamped. The new name looks like it is going to be Dewey's. (It is kind of a joke on my great-grandfather.) The new place should be ready September 8.

The ALCB requires certain facilities we do not have now. We

hope to have the full liquor license

operating by Christmas. We will not run a new restaurant from RATT or the bar in HUB. We do have new liquor license and facilities in the theatre. It is doing very well.

The BASS facility is new. We entered into a new agreement this summertime which Student Council accepted almost un-

animously, with Keith Krause, being the only dissenter because, he said "It did not feel right."

we will be providing texts for the Fine Arts students as well as sheet music.

Unhappily, the Music Store is such a marginal operation, if sales do not increase significantly, its life could be in danger.

L'express is doing a booming business. We are thinking about keeping it open late on theatre performances in SUB.

Programming in RATT has changed a little. Our new Entertainment Director, Alex Mac-

interest in politics and administration.

The Students' Union is a big organization. It has the third largest student population in Canada, and one of the most active. We have generally had a major outlook on things. The SU has made some major statements like the march on legislature in 1978.

It is such an exciting organization. There is so much to learn and so much to do. It is a fascinating job.

**O:** Is there a profile problem in the Students' Union?

**S:** Definitely. It is strange. So many people do not realize the executive does not go to school. We take one or two classes, but we are full-time paid employees. They do not realize we run a multi-million dollar corporation. They do not realize the political fight the Students' Union takes.

People in government do listen to us about certain issues that do affect the students. Tuition fees did not go up last year. A lot of that was due to student pressure to review the whole tuition policy of the government and in the meantime, freeze tuition.

Our financial recovery program will have some major ramifications not just on campus but in the city. We made the wire-service with our one million dollar debt. So maybe people will be interested on how we get out.

*Programming has changed in RATT... you will probably see less louder bands and more jazz, blues, an even folk music.*

The outlet is in the Music Store. With the market on campus of 30,000 plus people, it should be one of the best ticket outlets in the city.

A small capital expenditure was made for proper lighting to the Music Listening Area (in SUB) and create a lounge and study area.

The Music Store is an interesting case this year, because

Donald, is trying a different program this year. You will probably see less louder rock bands, and more jazz, blues, bluegrass, and even folk music.

**O:** Why did you run for the presidency of the Students' Union?

**S:** I have always been involved. I was a chairman in residence and I sat on Students' Council. So I have always had an

# Get a new slant on math.

"The Texas Instruments new TI-40 and TI-55-II calculators have angled displays for easy-to-see-answers."

The slanted display makes these calculators easier to use at arm's length—and that's just the beginning. The economical TI-40, with built-in functions like trig, stat, logs, roots, reciprocals and more, will help you through math and science courses—especially since it comes with the informative book, **Understanding Calculator Math**.

The book explains how to use the TI-40 to work through, and understand, common problems.

If you're an advanced math or science major, you'll be

more interested in the TI-55-II, which comes with the **Calculator Decision-Making Sourcebook**. The TI-55-II features 56-step programmability, multiple memories, scientific and statistical operations, conversion factors and much more—a total of 112 functions.

An extremely powerful calculator, at an excellent price. Both calculators have LCD displays, long battery life and fit right in your pocket.

TI-40 and TI-55-II calculators. Two new slants on math from Texas Instruments.

Look for them wherever calculators are sold.

**TEXAS INSTRUMENTS**  
INCORPORATED



## We sell pictures

Seen yourself in the Gateway lately? For a small fee our Photo Department will make prints of our photographers' pictures. For more information drop by the Gateway office.

Rm. 282 SUB.

© 1981 Texas Instruments Incorporated

# Welcome back to

TUES SEPTEMBER 8th TO SUN SEPTEMBER 13 (ONE WEEK ONLY)  
TICKETS: HUB MALL & ALL BASS OUTLETS  
PHONE: 432-5145



SU  
th

NATIONAL TOURING CO.

PHILIP ROGER ROY

PRESENTS

EARL WILSON JR'S

GRAMMY AWARD WINNING BROADWAY MUSICAL

ON STAGE  
Music & Lyrics by EARL WILSON JR.  
Produced by PHILIP ROGER ROY  
Directed by CARL DEESE  
Musical Direction by KEN FORD  
Original Cast Album on  
LIBRA RECORDS



"A CELEBRATION OF LOVE"  
— Playboy Magazine

"IT'S A SMASH"  
— Rex Reed

"A ROLLICKING AND JOYOUS  
MUSICAL REVUE"  
— After Dark

"HOTTEST MUSICAL IN TOWN"  
— Womens Wear Daily

"GOOD CLEAN DIRTY FUN"  
— Phila. Daily News

"NAUGHTIER THAN HAIR,  
MORE WHOLESOME THAN OH CALCUTTA"  
— San Francisco Chronicle

let my people  
**COME**  
a musical about sex

fri 18

leon

Friday, September  
Perryscope Concert  
BONE in concert

SUB

thurs 17

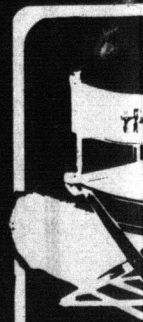
Some films you w

Ordina

fri 25 / sat 26

ROBERT  
DE NIRO

"RAGING B



septe



# another season at

# sub theatre

UNIVERSITY OF ALBERTA

for information phone 432-4764  
FOR INFORMATION PHONE:  
432-4764

Detailed events are held in SUB Theatre, located on the 2nd floor, Students' Union Building, University of Alberta campus.

Leon Redbone.

tues 13

Billy Connolly

tues 27 / wed 28

ANN MORTIFEE

September 18 — 8:00 p.m. — S.U. Concerts and Concert Productions, Ltd. present LEON REDBONE in concert. Tickets: \$9.50. Available: All Bass outlets.

Tuesday, October 13 — 8:00 p.m. — S.U. Concerts and Perryscope Concert Productions, Ltd. present BILLY CONNOLLY in concert. Tickets available: All Bass outlets.

Tuesday, October 27 and Wednesday, October 28 — 8:00 p.m. — S.U. Concerts present ANN MORTIFEE in concert. Tickets: \$9.00/\$11.00. Available: All Bass outlets.

## sub theatre cinema September

Cinema showtimes 7 & 9:30 PM unless otherwise specified. Regular cinema admission: \$2.50 with U of A ID, \$3.50 non-students. Double features: \$3.50 with U of A ID, \$4.50 non-students.

<p>sun 20</p>  <p>you watch, others you feel.</p> <p>Ordinary People</p>	<p>sun 20</p>  <p>BEST FILM OF THE YEAR. BEST DIRECTOR OF THE YEAR. BY 11 CRITICS.</p> <p>STANLEY KUBRICK'S CLOCKWORK ORANGE</p>	<p>tues 22</p> <p>Guess Who's Back?</p>  <p>NATIONAL LAMPOON'S ANIMAL HOUSE</p> <p>The Most Popular Movie Comedy Of All Time</p>	<p>wed 23 / thurs 24</p> <p>"The year's best film."</p> <p>— Charles Champlin, LOS ANGELES TIMES</p> <p>'TESS'</p> <p>As timely today as the day it was written.</p> 
<p>sat 26</p>  <p>RAGING BULL</p>	<p>sun 27</p>  <p>ALIEN</p> <p>In space no one can hear you scream.</p>	<p>mon 28</p>  <p>IN THE HEAT OF PASSION, TWO THINGS CAN HAPPEN: THE SECOND IS MURDER.</p> <p>JACK NICHOLSON JESSICA LANGE</p> <p>IN A BOB RAFELSON FILM</p> <p>The Postman Always Rings Twice</p>	<p>tues 29</p> <p>RIVETING!</p> <p>A Winner! Marvelous! A Catch! Powerful!</p> 

### SEPTEMBER IN DETAIL

Thursday, September 17 — 7:00 p.m. and 9:30 p.m. — ORDINARY PEOPLE — 1980, USA, 123 min. Dir: Robert Redford. Cast: Mary Tyler Moore, Donald Sutherland, Timothy Hutton. Adult.

Friday, September 18 — 8:00 p.m. — S.U. Concerts and Perryscope Concert Productions, Ltd. present LEON REDBONE in concert. Tickets: \$9.50. Available: All Bass outlets.

Saturday, September 19 — 8:00 p.m. — Chinese Students Drama Club present a CHINESE DRAMA NIGHT. Tickets: \$3.00. Available: S.U. Box Office (HUB Mall), Jolly Time Travel Agency.

Sunday, September 20 — 2:00 p.m. — The Village Bookshop, Ltd. present a children's concert — BRANDYWINE. Tickets: \$4.00 Adults, \$3.00 Children. Available: The Village Bookshop.

Sunday, September 20 — 7:00 p.m. and 9:45 p.m. — A CLOCKWORK ORANGE — 1971, Great Britain, 137 min. Dir: Stanley Kubrick. Cast: Malcolm McDowell, Patrick Magee. Restricted Adult.

Monday, September 21 — 8:00 p.m. — Edmonton Film Society — International Series — first of a series of 10 — MOSCOW DOES NOT BELIEVE IN TEARS — USSR, 1980. Dir: Vladimir Menshov. Admission by series ticket only. \$22.00. Available: S.U. Box Office (HUB Mall), Woodward's, door.

Tuesday, September 22 — 7:00 p.m. and 9:30 p.m. — ANIMAL HOUSE — 1978, USA, 106 min. Dir: John Landis. Cast: John Belushi, John Vernon, Donald Sutherland. Restricted Adult.

Wednesday, September 23 and Thursday, September 24 — 7:00 p.m. only — TESS — 1979, France/Great Britain, 170 min. Dir: Roman Polanski. Cast: Nastassia Kinski, Peter Firth, Leigh Lawson, John Collin. Family.

Friday, September 25 and Saturday, September 26 — 7:00 p.m. and 9:30 p.m. — RAGING BULL — 1980, USA, 128 min. Dir: Martin Scorsese. Cast: Robert De Niro. Restricted Adult.

Sunday, September 27 — 7:00 p.m. and 9:30 p.m. — ALIEN — 1979, USA/Great Britain, 117 min. Dir: Ridley Scott. Cast: Tom Skerritt, Sigourney Weaver. Adult.

Monday, September 28 — 7:00 p.m. and 9:30 p.m. — THE POSTMAN ALWAYS RINGS TWICE — 1981, USA, 119 min. Dir: Bob Rafelson. Cast: Jack Nicholson, Jessica Lange, John Colicos. Restricted Adult.

Tuesday, September 29 — 7:00 p.m. and 9:30 p.m. — ATLANTIC CITY — 1981, Canada/USA, 102 min. Dir: Louis Malle. Cast: Burt Lancaster, Susan Sarandon, Kate Reid, Robert Joy. Adult.

## Thorsell swipes Coutts, Clark

(Editor's Note: in order to rub salt in the wounds of the arrogant and cynical Mr. Coutts after His August electoral lose In Spadina to, horrors! a New Democrat, we reprint a sometime *Edmonton Journal* associate editor's remarks on Coutts' U of A antics some years ago.)

Did you know that Tory leader Joe Clark and backroom Liberal tycoon Jim Coutts once marched together under a banner proclaiming, "Our beds have cockroaches?"

Well, politics makes strange bedfellows and they did. It was March, 1960 and the issue was student residences at the University of Alberta. According to a *Journal* report at the time, "an estimated 300 slogan-chanting, placard-carrying University of Alberta students marched on the Legislative Building" to demand bugless housing for young men from High River and young women from anywhere. But it wasn't the loose, ragtag kind of demonstration we are used to these days. Young fogey Clark (leader of the campus Tories) and fast-action Coutts (leader of the campus Liberals) already had the political shell game down pat.

Reported *The Journal*: "Spokesmen for the marchers (Clark and Coutts) claimed it was an unorganized and spontaneous demonstration. However, the marchers carried mimeographed sheets of instructions telling them to keep the demonstration orderly and to avoid blocking traffic on their walk from the university to the Legislative Building. The instruction sheet said, 'Keep in mind: this march is unorganized, unplanned and spontaneous.'"

Ah yes, the instinctive swell of public adulation that sweeps protesting non-candidates into office. Canadians need no longer wonder how either of these gentle gentlemen ascended to the neo-gothic niches of power, although slick Jim Coutts didn't even need election to become Pierre Trudeau's right-hand man.

Upon meeting Provincial Treasurer E.W. Hinman in the Legislative foyer, Clark and Coutts "chanted" slogans and presumably joined their fellows (including CCF student leader Grant Notley) in greeting Mr. Hinman's excuses with "boos and hisses." Finally, decorum shattered completely when "someone blew a trumpet." (Down the hall, Premier Ernest Manning is rumored to have looked skywards.)

The rambunctious Clark-Coutts demonstration so upset a pious Mr. Hinman that he accused them of using a method "which is usually associated with countries other than ours." One assumes he was referring to democracies. At any rate, it was the closest either Clark or Coutts came to being called un-Canadian — before, not since.

Alberta's student residences were built a few years later and one suspects that both Clark and Coutts took all the credit and still do.  
William Thorsell, April 25, 1979.



For Your Student  
Loan Requirements  
we'd like to say  
"Can do!"

at our new  
**STUDENT LOAN  
CENTRE**

10107 Jasper Avenue  
425-6534

When you succeed...we succeed.

 ROYAL BANK

## The Faculty of Arts The University of Alberta

### STUDENT REPRESENTATION ON COMMITTEES

Students registered in the Faculty of Arts are invited to participate directly in the planning and administrative activities of the Faculty by volunteering for service on its various major committees (e.g. Academic Planning, Curriculum, Academic Standing, etc.).

For further information, interested students should call or visit the Faculty Secretary, Room 6-18 Humanities Centre.

**SJ** music

Attention.....  
Music Students  
avoid line-ups.....  
buy now!

We stock all  
music texts  
and supplies.

Dealers in printed music, music literature, opera & study scores.

Support  
your Students' Union services

HUB Mall, University Campus 432-5073  
open 10 to 5:30. Thursdays 'till 9.

**We've got it.**

# ARTS

## Fanfare

Hi. This is your Arts Editor speaking. Welcome to Edmonton's only logical alternative to the Big Green Bore and the Little Orange Mouthpiece.

The big news on the Arts page this year is that for the first time in recorded history our reviewers will cover everything. That's right: absolutely everything.

Thus when music student Herman Tinkelfarb does his recital of "Moonlight Sonata" at Convocation Hall, it will be automatically reviewed, even if the recital is on a layout night when I am pasting up this page, and the only reviewer available is the donkey who yelled "Rock and Roll!" four times during Ken Bloom's set at the Edmonton Folk Festival.

And when Rosemary Flodge (Fine Arts II) paints her masterpiece, "Adjoining colored patches in search of meaning #17," its electric spirituality will be whooped and hymned across these pages.

Most importantly, this year the text of all press releases will be printed verbatim on the Arts page, to ensure that the readers' knowledge of upcoming events is not limited in any way.

Normally this would involve running a 48-page supplement to the *Gateway* to include every humble boast we receive from the publicity agents. By employing microdot technology, however, (the same as was used in World War II to transmit secret messages) each page of a press release will be reduced down onto a single dot in the copy of the *Up and Coming* column (elsewhere on this page).

Simply obtain a microscope, set it at 500X, and by scanning the periods, commas, semicolons and other punctuation, you will get the big picture on artistic happenings in Edmonton.

For those without microscopes, *Up and Coming* (found in the first *Gateway* of every week) will continue to feature the usual full-sized, abridged notices, ruthlessly culled by your prejudiced and crotchety Arts Editor. Criticism of the selection, and suggestions for additions are always welcome. Phone 432-5168 or write.

Volunteer reviewers to cover artistic happenings will also be greeted with effusions of gratefulness, especially if they are literate and knowledgeable in some area.

Keep in mind that, a) the Arts Editor almost always has something reviewable on hand; b) he is a firm believer in laissez-faire and a staunch opponent of on-campus provincialism, and therefore any book, play, concert or whatever chosen by the reviewer will usually be considered fair game; c) the Editor provides free kibitzing services, but generally he is a pushover when it comes to critics who refuse to change even a single word in a review.

With your help, then, the Arts page will be informative and interesting throughout the year. — *Jens Andersen*

Mike did this one



photo by Mike McKinney

## Print it again, Sam

One of the best pictures we printed last year was the above one of Billy Joel down on all fours, from his Coliseum concert in April. It appeared in our last issue of 1980-81, and, in accordance with

Murphy's Law, the photo credit disappeared somewhere between the editor's brain and the page. To give credit where credit is due, reprint a classic and fill this damned page we present it again.

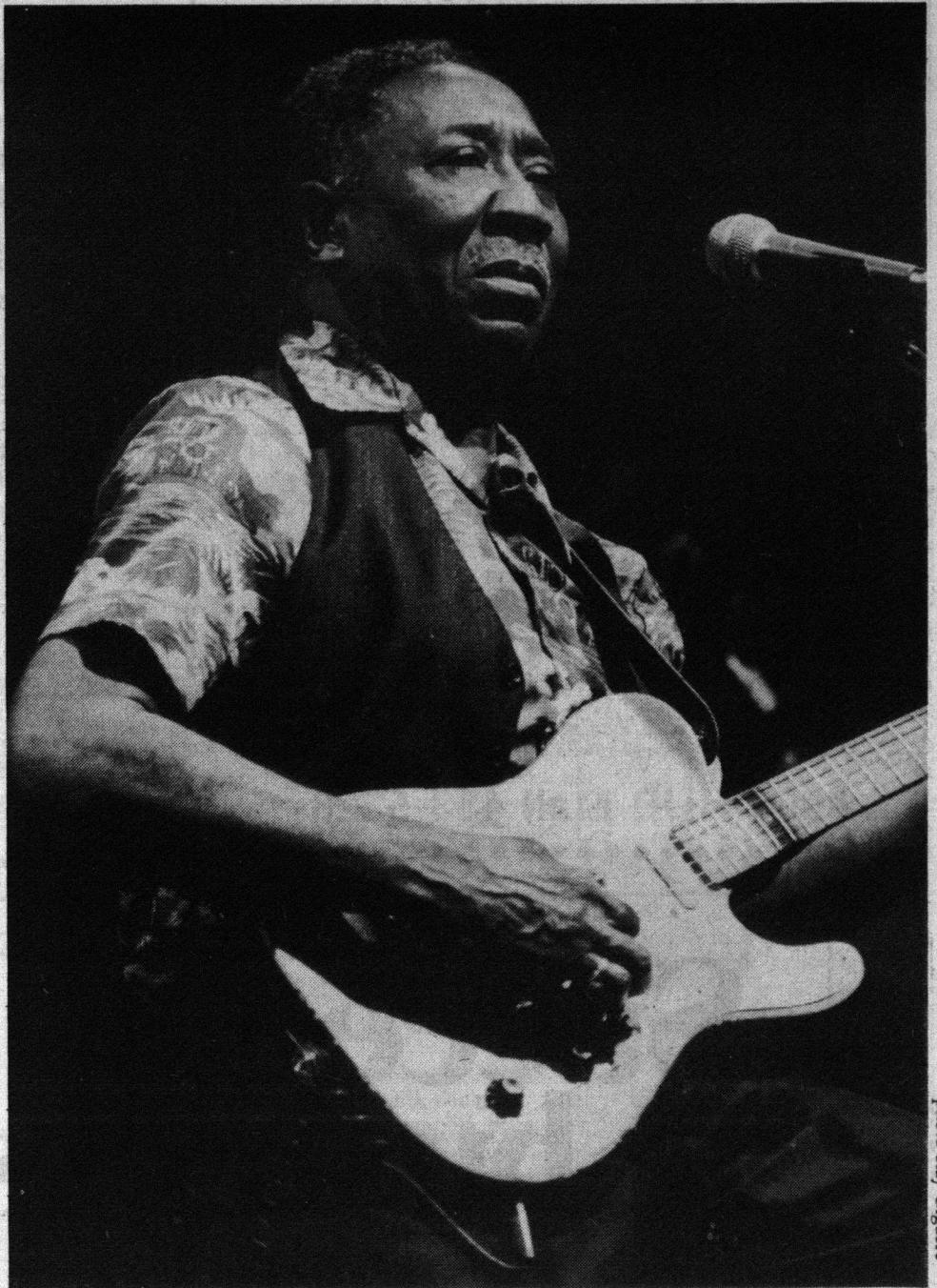


photo Ray Giguere

Pioneer electric bluesman Muddy Waters as he appeared at SUB Theatre Aug. 27

## Up and Coming

### GALLERIES

Glen Alps: The Collograph Idea; till Sept. 27; Ring House Gallery; 11-4 p.m. weekdays, 11-9 p.m. Thursdays, 2-5 p.m. Sundays.

Body Parts; till Sept. 22; SUB Art Gallery; Monday to Friday 11-5 p.m., Weekends 1-5 p.m.; Admission Free.

Anatomy fans should note that the promo says, "The drawings in this exhibition have one thing in common ... they all deal directly with the body."

### LOCAL RECREATION

The Models; Friday, Sept. 4; Dinwoodie Lounge.

*Up and Coming* is only a partial listing of events: we are not responsible if you miss an event due to our omission. Check the bulletin boards! Phone 432-5168 to submit your listing (inclusion not guaranteed).

## Musicians Needed

Positions are available to musicians in the University of Alberta Concert Band, Pep Band, Symphonic Wind Ensemble, and Stage Bands. For further information on these, and the Wind section of the St. Cecilia Orchestra call Prof. Pier or Prof. Dalwood at 432-3263.

## ARTS QUIZ



Identify the author of the following lines and the song they were taken from:

1. My mother's in St. Louis  
and my bride's in Tennessee  
So I'm going to Arizona  
with my banjo on my knee

2. We are the Office Block  
Persecution Affinity  
God save little shops,  
china cups and virginity

3. Some folks are born  
with star-spangled eyes  
Ooh! That red, white and blue  
and when the band plays  
"Hail to the Chief"  
They point the cannon at you

4. California shoeshine boys  
counting up their dimes  
counting up the girls they've known  
and counting up the times  
I've got heartaches  
but I've got news

California, shoeshine boys  
you can shine my shoes

5. It's time to go  
I heard the girl say,  
"Last call," a while ago  
Damn sure good  
she said it so loud  
I was about to fall on the floor

6. We still fly Old Glory  
down at the courthouse  
and white lightning's still  
the biggest thrill of all

7. It's hard to make  
a world of your own  
and if you have to  
go off and get stoned  
It's better with a joint than with a drink

answers on page 12

**POMBERT INSURANCE AGENCIES**

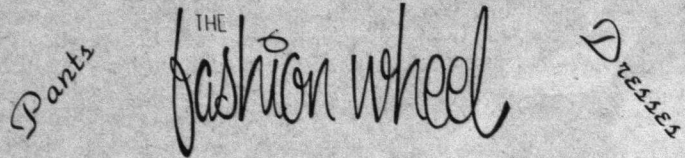
Are you paying too much for auto insurance?

Call us for low rates and exceptional service.

We have an agent on campus every Tuesday and Thursday — Call us now.

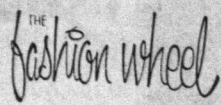
**TENANTS • HOME**

→ 464-2272 ←



**Cord blazers (completely lined) in grey, wine, camel, and brown.**

**Sizes 5 to 15 \$40**



**8908 HUB Mall 433-5226**

**10 Guitar Workshops**

**FOLK, COUNTRY, BLUES with 'Ma' Fletcher**

Writer of the weekly Edmonton Journal column 'The Guitar Man' and performer at the Edmonton Folk Festival, Ma Fletcher has performed with Valdy, Stan Rogers and Brent Titcomb

**ENROL NOW!**

- Beginner, Intermediate, and Advanced courses
- Small classes — 6-12 students
- On Campus — in SUB
- Starts Sept. 19th. (Every Saturday or Monday)
- \$65 for 10 week course

**Advanced Course Includes:**

- 1) 12 finger picking patterns
- 2) Blues guitar
- 3) Lead guitar
- 4) Theory & improvisation
- 5) Open tunings
- 6) Flat picking Styles
- 7) Learn to Jam

**CALL 429-0914**

TEAR OUT THIS AD

**We are the Gateway**

The Gateway needs staff! Small ones, tall ones, fat ones, thin ones, male, female, or indifferent, Arts, Science, Medicine, Education, even Engineering, literature, semi-literate, or even just able to scrawl their name.

We need writers, layout artists, sports fiends, reviewers and critics, photographers. If you have any particular skill or even if you don't but want to learn a newspaper skill — we can use you.

Each issue involves some six to eight thousand words of copy (at last count), about a dozen pictures, hours and hours of layout, and more hours of proofreading. On any press night — Mondays and Wednesdays — there is always work to go around.

As well, there are knitting tournaments, frisbee workouts, Popeye interviews, water bombings, dognappings, and some pretty classy ping-pong playing to cover everyday. Never a dull moment.

What are the benefits of working on the Gateway you ask?

The Gateway brings you adventure: every week or so daredevil reporters risk life and limb to attend Student Council meetings, sometime even interviewing President Phil Soper Himself.

The Gateway offers fun and excitement the like of which can't be had at Dinwoodie socials or frat house beer bashes. All this and more can be had simply by coming up to Room 282 Students' Union Building before next April. Don't procrastinate. You know you want to be a Gateway staffer.

**Succeed in business.**

**"It's a lot easier with a Texas Instruments calculator designed to solve business problems."**

Touch a few special keys on these Texas Instruments calculators, the TI Business Analyst-II™ and The MBA™, and lengthy time-value-of-money problems suddenly aren't lengthy anymore. You can automatically calculate profit margins, forecast

sales and earnings and perform statistics.

And problems with repetitive calculations are a piece of cake for the MBA, because it's programmable.

These calculators mean business, and what they give you is time—time to grasp underlying business concepts, while they handle the number crunching. To make it even easier, each calculator comes with a book written especially for it, which shows you how to make use of the calculator's full potential.

The Business Analyst-II and MBA business calculators from Texas Instruments. Two ways to run a successful business major, without running yourself ragged.



**TEXAS INSTRUMENTS INCORPORATED**



© 1981 Texas Instruments Incorporated

- Answers to Arts Quiz:
1. Rider in the Rain, Randy Newman
  2. Village Green Preservation Society, Ray Davies
  3. Fortunate Son, John Fogerty
  4. California Shoottime Boys, Laura Nyro
  5. Ode to the Man at the End of the Bar, Carl Mosley
  6. Okie from Muskogee, Merle Haggard
  7. I'll Change Your Flat Tire Merle, Nick Gravennites

**Lori's Loft**



*The Natural Fabric Experience*

in fashions from far away places.

**ETHNIC CLOTHING**

Wear the unusual art form of original handcrafted BATIK in cotton & rayon jumpsuits, dresses, and skirts.

**GREAT SAVINGS ON SUMMER ITEMS**

Lori's Loft  
9109-112 St. HUB MALL  
OPEN: 10-5:30 Mon.-Sat.  
10-8:00 Thurs.

# Bears should prevail in 81/82

by Bob Kilgannon

There is one thing that is always consistent in the Western Intercollegiate Football League — nothing is for sure. Every year the competition is tough and trying to predict winners is even tougher.

Last year this reporter gave his fearless predictions of how the league shaped up and somehow picked the order of finish correctly. I should leave well enough alone but I'm going to go out on a limb and try to predict an unpredictable league one more time.

Here's how I see it:

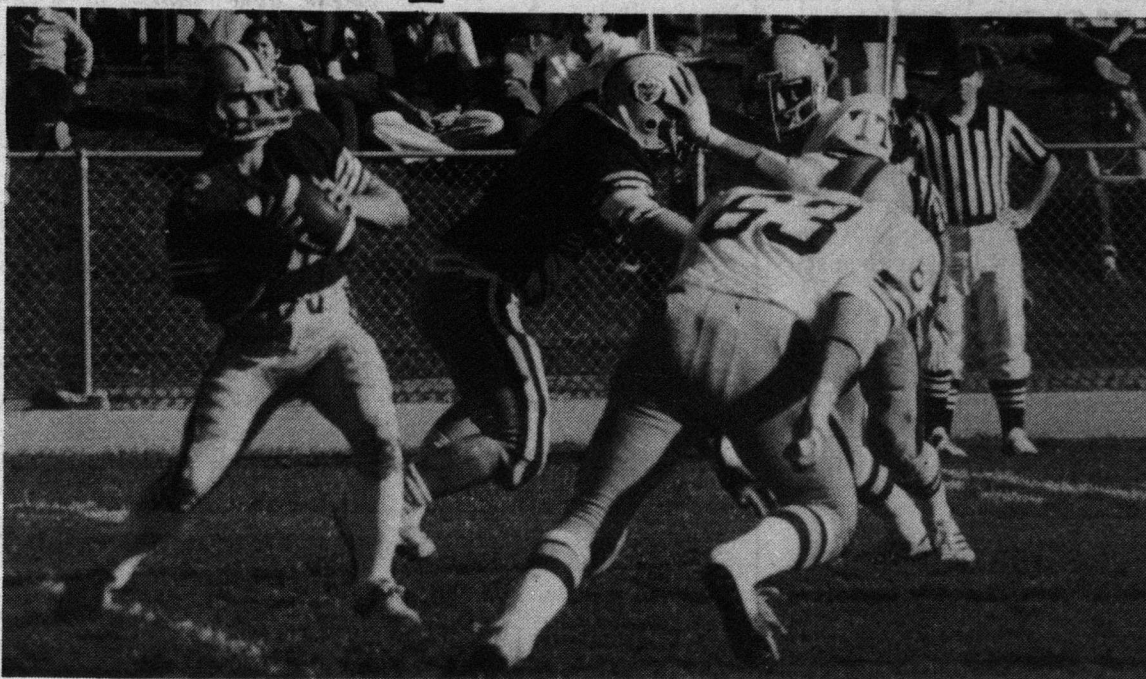
1. Alberta Golden Bears (6-2) — Last year's College Bowl champs. They have a solid nucleus of returnees and some talented rookies.

2. Manitoba Bisons (5-3) — A bit of a disappointment last season but will improve considerably with the return of Duane Hysop, the W.I.F.L. all-star quarterback in 1979.

3. U.B.C. Thunderbirds (4-4) — Many returnees from last year's club. This year they will have more experience and they simply can't have as many injuries as last year.

4) Calgary Dinosaurs (3-5) — Greg Vavra, last year's all-star quarterback will look pretty ordinary without some of last year's excellent support staff. A rebuilding year.

5) Saskatchewan Huskies (2-6) — Last year the Huskies' biggest strength was their running game. Now they have lost both their running backs. Back to square one for Val Schneider and company.



The Canadian champion University of Alberta Golden Bears football team will have to go without star quarterback Forrest Kennerd. But Bob Kilgannon predicts the Bears will still finish in first place.

by Michael Skeet

The Golden Bears football team begins this year's tilt at the scrimmage in much the same fashion as it concluded last year's efforts. On Saturday, September 5 at 7:30 p.m. in Clarke Stadium, the Bears will take on their opponents from the 1980 College Bowl, the University of Ottawa Gee-Gees.

The coaching staff, headed up as per norm by longtime Bears mentor Jim Donlevy, has been trimming the roster since the last week of August; some seventy players attended the first practices and team meetings.

A couple of the deletions are unfortunate in terms of the Bears' defensive performance this season: John Urschel and Mike Heidebrecht have had to retire. Urschel will be particularly missed; the defensive signal-caller has broken a finger in his left hand. In view of his training to be a surgeon, Urschel's decision to call it quits only makes sense. Heidebrecht, a defensive back, has not returned for the simple reason that he was unable to gain readmission to the university.

There are no pressing injury problems going into the exhibition game, although insiders are of the opinion that defensive backfield ace Gord Syme hasn't fully recovered from an off-season knee injury.

Tickets for the rematch (as you're well aware, the Bears won last year's College Bowl 40-21) are \$4.00 each.

Photo Tom Freeland

## University team practice times

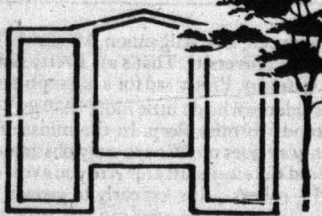
SPORTS	DATE	TIME	PLACE
Golden Bear Soccer Practices	Thurs., Sept. 3	6:00 p.m.	Lister Hall Field
Golden Bear Hockey Meeting	Thurs., Sept. 10	6:00 p.m.	Lister Hall Field
Panda Gymnastics Meeting	Wed., Sept. 9	5:00 p.m.	Room W1-38 of Phys. Ed. Bldg.
Panda Volleyball Meeting	Wed., Sept. 9	4:00 p.m.	Room E-05 Phys. Ed. Bldg.
Panda Basketball Meeting	Thur., Sept. 10	5:00 p.m.	Room W1-38 of Phys. Ed. Bldg.
	Mon., Sept. 14	5:00 p.m.	Room E-120 of Phys. Ed. Bldg.

Any players interested in the above intercollegiate teams are welcome to attend these meetings.

The HUB  
merchants  
welcome you  
back ...



50  
shops  
&  
services  
to serve  
you.



**HUB Mall**

89 Avenue & 112 Street

'... where it's summer all year 'round'

# the Gateway

## EDITORIAL

### For the record

"Well ... yes, and here we go again."  
Hunter S. Thompson

Lord knows why I do this when I could be packing fish in Newfoundland or working on the pipeline making \$1500 a week or finishing a B. Comm. en route to Law like my almost-editor colleague who all of a sudden got smart.

Back when I was interviewed for this best of all possible jobs and life was simpler a prosaic political science student asked if I thought I could write editorials twice a week. If I'd been half as clever as he thinks he is I would have rebutted that I could hope only to live up to his example, but under intense lights and a small amount of pressure all I could muster was a plaintive 'yes.'

Well, now the charade is over (or it is just beginning) and I guess I should come right out and say something. Being slightly, but not decidedly conservative, hopefully optimistic, and tending more to listening than to raving, I suspect I will have trouble forwarding opinions on every imaginable topic arising or falling about our heads in the next 51 issues of the *Gateway*. Having said that, it should be clear it is the editor's prerogative to do what he wishes with this space, and if that follows then we may all expect the results will be rather less structured than say, the *Edmonton Journal's* editorial columns.

What to do with the rest of the paper, however, is somewhat more structured. Constitutionally, the *Gateway* is the 'official newspaper of the students at the University of Alberta.' Our Students' Union bylaw reads in part:

1. A student newspaper, to be known as "The Gateway," shall be published by the Students' Union for the purpose of:
  - (a) providing accurate and complete coverage of campus news;
  - (b) aiding in the promotion of student activities and functions;
  - (c) presenting all aspects of student opinion to the student body as a whole;
  - (d) encouraging the literary and artistic talents of students on campus;
  - (e) maintaining co-operation between the administration, staff and students of the University.

This has been variously interpreted by a variety of interpreters, and we — the *Gateway* staff — interpret it this way:

The purpose of the *Gateway* is to collect, write, and edit campus news and news of interest to the student body and to provide a forum for student views.

At this point skeptics may ask why a small clique of *Gateway* staff should so arrogantly preach what students want to see in their paper. Our response is this: any member of the *Gateway* staff, from the top on down (as it were) has a say in newspaper policy. That includes news content, cartoons, classifieds — the works.

The *Gateway*, blessed with high (compared to most other campus papers) advertising revenues, costs students very little, somewhere between one and two cents per issue. Such a small financial contribution gives no outsider the right to make unreasonable demands of an overworked, underpaid, and unpaid newspaper staff — not on the basis that the *Gateway* is supported meaningfully through Students' Union fees.

For the \$25,000 that pays editorial 'honoraria' this year the Students' Union probably could hire a retiring *Edmonton Journal* copy-editor to reprint Community Relations news releases and campus club newsletters. The *Bridge* would be squeezed out of the market, but the U of A would lose a dynamic, provocative, and, at least in journalistic circles, well-reputed campus newspaper.

Despite the protestations of a few, I don't think students here want to lose the *Gateway* as it now exists. So there you have it. Now you know where we're coming from.

Peter Michalshyn

It is something of an old *Gateway* tradition to welcome first-year students to university in the first issue. So, welcome, first-years. So there.

P.M.



## LETTERS

### Bad wrapping

I am the very model of a *Gateway* editorial, as I attack most everything with snorts and blasts censorial. I never have a word to say in favor of the government. I skewer Student Council and the policies of Parliament, 'cause I'm the one who knows what's best for all of our community, and tell the world just what that is at every opportunity. I loathe all Science, Arts and Law and Education students, and brainless engineers who always seem to lack the prudence, tact and taste to hold in check their very lowbrow fulminations. Instead of just applauding all my matchless lucubrations. And so you see that I must be with bombast professorial—the very perfect model of a *Gateway* editorial.

Gilbert N. Cellophane  
Aitchemmespinna IV

## LETTERS

Letters to the *Gateway* should be a maximum of 250 words on any subject. Letters must be signed and include faculty, year and phone number. Anonymous letters will not be published. All letters should be typed, although we will reluctantly accept them if they are very neatly written. We reserve the right to edit for libel and length. Letters do not necessarily reflect the views of the *Gateway*.

## THE CHOPPING BLOCK

by Jens Andersen

As you have probably already heard, 1982 will be UN's "Year of the World."

Hume N. Wright, Canadian co-ordinator of UNESCO-organized educational campaign, remarks in a recently released information bulletin that the "Year of the World" will be an attempt to get away from the narrow issues of previous campaigns like the "Year of the Handicapped," the "International Geophysical Year," the "Year of the Child," etc., and yet simultaneously concentrate on all of them:

"In essence, next year you can be concerned about any legitimate concern."

Wright suggests that good issues to ponder upon are the menace of pollution, the menace of food additives, the plight of women, the menace of religious cults, the menace of the arms race, and the plight of whales, harp seals and third world peoples. He states that concerned citizens should worry seriously about these issues, even to the point of knitting their brows and losing sleep at night. More activist people, he says, should wear buttons or T-shirts with slogans on them, buy "Year of the World" stamps, paste bumperstickers on their cars, toss "message" frisbees, and harass friends and neighbours into doing the same.

"True, this may not solve the world's problems," Wright concedes, "but at the very least we should be able to bolster the advertising novelties industry, which has been hard hit by the recent recession."

Wright also warns that there is a dangerous tendency nowadays to shrug and dismiss public-awareness campaigns like the "Year of the World." To counteract this indifference UNESCO has introduced an innovative technique for motivating people to agonize over world problems: beginning January 1, 1982 anyone caught minding their own business will be summarily shot by UNESCO's Consciousness-raising Police.

Next week: The case for compulsory sterilization of English professors.



EDITOR - Peter Michalshyn  
MANAGING - Mary Ruth Olson  
NEWS - Wes Oginski and Greg Harris  
PRODUCTION - Robert Cook  
ARTS - Jens Andersen  
SPORTS - Michael Skeet  
PHOTO - Ray Giguere  
CUP - Richard Watts  
ADVERTISING - Tom Wright  
MEDIA PRODUCTIONS - Margriet Tilroe-West  
CIRCULATION - Mike McKinney

The *Gateway* is the newspaper of the students of the University of Alberta. With a readership of more than 25,000 the *Gateway* is published by its proprietor, the Students' Union, Tuesdays and Thursdays during the winter session. Contents are the responsibility of the editor; editorials are written by an editorial board or signed. All other opinions are signed by the party expression *them*. Copy deadlines are noon Mondays and Wednesdays. The *Gateway*, a member of Canadian University Press and of CUP Media Services, is located in Room 282 Students' Union Building, Edmonton, Alberta, T6G 2J7. Newsroom — 432-5168; advertising — 432-3423.

STAFF THIS ISSUE: John Roggeveen, Bob Kilgannon, Murray Whitby, whoever wrote the Student Code for the university. That's all. Pretty sad for a big sophisticated operation like the *Gateway*. Pretty sad for a big sophisticated university like U of A. With 25,000 students who do little more than go to class to sleep and stay out late on weekends to miss sleep. In the midst of such widespread irresponsibility, the *Gateway* goes on. We are truly obstinate. We are. I wonder, though, where all the old *Gateway* staff are? Are you avoiding us Nina, Alison, Keith, Mike, Kenny D, others... It's too early to grovel, but if this keep up we may become desperate. And then who can tell what might happen.

# Looking to the university of the future

York University President H. Ian Macdonald speaking to the Association of Commonwealth Universities in Hong Kong:

Since the birth rate in almost all industrialized countries is falling dramatically, we are faced now with a labor force that is getting progressively older. Under these conditions, it is becoming increasingly clear that a great deal of retraining will be necessary in the labor force. As a vehicle for adaptive training, the university must be at the forefront to assist in that process.

We must be prepared to get the best out of the people we have, and be prepared to match skills to opportunities. Through the educational system, we can provide the degree of retraining and continuing education which will make it possible for us both to fulfil our employment requirements and to satisfy the legitimate desires and demands of the current generation. This will require the provision of degree and non-degree programs to meet the changes in society's demands for:

- a broader education for those who received a narrow technical training and wish to expand their educational base and change their roles;
- upgrading in competence and perspective for people faced

with early obsolescence of their knowledge of skills;

- regular updating for professionals (teachers, planners, environmentalists, lawyers, managers, etc.);

- the introduction to new technical developments in science, management, law, planning and other fields.

Individuals should be given the opportunity at all points, during their lifetime, to find a new occupation that taxes their abilities and their innate capacity. This is where economic policy and education come closely together. In order to solve our unemployment problems, I believe it is essential first to create a sense of security among individuals so that hanging on at all costs to a job and obstructing technological progress is folly for all concerned.

However, in order to allay the fear of unemployment, we must be capable of ensuring that such individuals have the opportunity for new and fulfilling occupations. Thus, it is our responsibility to see that educational policy is following the movements and changing behavior of society.

Although the primary emphasis will remain on the full-time enrolment of students, the increasing tendency toward the part-time student who also has employment or family com-

mitments is characteristic throughout the world. This is understandable as university education becomes more of a lifetime experience, rather than a post-secondary school progression.

Continuing education will be increasingly important, as more people who were denied an opportunity at one time in their lives will have a second or third chance. As part-time study becomes more and more prominent in the university, the university, in turn, must then adapt its procedures radically to cope with changing styles and expectations.

We must be prepared to take the university to students as well as taking students to the university. Education at the workplace, on weekends, and by the electronic media will be the harbingers of the future.

One other significant role for the universities of the industrialized countries is to be found in their responsibility to Third World development. Through a variety of arrangements, we have a rich experience in the provision of technical and professional training as well as general education for students from Third World countries in the developed nations.

However, there remains the need for greatly expanded ex-

change of faculty between universities in the developed and developing nations as well as for exchange of data, information, research materials, joint projects and publications, and so on.

Not only would these exchanges aid the developing countries, but they would greatly enhance the universities in the

developed nations by giving our faculty first-hand knowledge about other countries, their people and their cultures. It would also offer an opportunity for "mid-career" enrichment and enable the contributing universities to support a much larger over-all faculty complement, within constrained budgets.



**HELP WANTED** The Gateway needs writers, reviewers, photographers, cartoonists, production staffers. If you are interested, come up to our office. It's Room 282 Students' Union Building. (photo is Rm. 236; Media is Rm. 238). There's no better way to find out what's happening to students at this and other universities, or to learn everything there is to know about newspapers. It can also be fun.

# PLEASE... ATTEND LECTURES BEFORE BUYING YOUR TEXTBOOKS



Textbooks are arranged by subject, then numerically by course number on the shelves. Save your cash register receipts. There will be NO refunds without cash register receipt. (No refunds or exchanges until Sept. 14th)

All returns must be unmarked and accompanied by a cash register receipt as proof of purchase.



**No refunds without cash register receipts.** Normally, returns must be made within 7 days of purchase. As we will be unable to process returns until Sept. 14, we will extend return privileges to Oct. 3. Commencing Oct. 5, we will only accept returns within 7 days of purchase.



Store Hours are:

Thursday	Sept. 3rd	9 AM to 5 PM
Friday	Sept. 4th	9 AM to 5 PM
Saturday	Sept. 5th	10 AM to 1 PM
Tuesday	Sept. 8th	9 AM to 8 PM
Wednesday	Sept. 9th	9 AM to 8 PM
Thursday	Sept. 10th	9 AM to 8 PM
Friday	Sept. 11th	9 AM to 6 PM
Saturday	Sept. 12th	10 AM to 3 PM

Commencing September 14th Store Hours will be:

Weekdays .....	9 AM to 5 PM
Saturday .....	10 AM to 1 PM



## The University of Alberta Bookstore

Students' Union Building

Phone: 432-4215