

**CIHM
Microfiche
Series
(Monographs)**

**ICMH
Collection de
microfiches
(monographies)**



Canadian Institute for Historical Microreproductions / Institut canadien de microreproductions historiques

© 1998

Technical and Bibliographic Notes / Notes techniques et bibliographiques

The Institute has attempted to obtain the best original copy available for filming. Features of this copy which may be bibliographically unique, which may alter any of the images in the reproduction, or which may significantly change the usual method of filming are checked below.

- Coloured covers / Couverture de couleur
- Covers damaged / Couverture endommagée
- Covers restored and/or laminated / Couverture restaurée et/ou pelliculée
- Cover title missing / Le titre de couverture manque
- Coloured maps / Cartes géographiques en couleur
- Coloured ink (i.e. other than blue or black) / Encre de couleur (i.e. autre que bleue ou noire)
- Coloured plates and/or illustrations / Planches et/ou illustrations en couleur
- Bound with other material / Relié avec d'autres documents
- Only edition available / Seule édition disponible
- Tight binding may cause shadows or distortion along interior margin / La reliure serrée peut causer de l'ombre ou de la distorsion le long de la marge intérieure.
- Blank leaves added during restorations may appear within the text. Whenever possible, these have been omitted from filming / Il se peut que certaines pages blanches ajoutées lors d'une restauration apparaissent dans le texte, mais, lorsque cela était possible, ces pages n'ont pas été filmées.
- Additional comments / Commentaires supplémentaires:

L'Institut a microfilmé le meilleur exemplaire qu'il lui a été possible de se procurer. Les détails de cet exemplaire qui sont peut-être uniques du point de vue bibliographique, qui peuvent modifier une image reproduite, ou qui peuvent exiger une modification dans la méthode normale de filmage sont indiqués ci-dessous.

- Coloured pages / Pages de couleur
- Pages damaged / Pages endommagées
- Pages restored and/or laminated / Pages restaurées et/ou pelliculées
- Pages discoloured, stained or foxed / Pages décolorées, tachetées ou piquées
- Pages detached / Pages détachées
- Showthrough / Transparence
- Quality of print varies / Qualité inégale de l'impression
- Includes supplementary material / Comprend du matériel supplémentaire
- Pages wholly or partially obscured by errata slips, tissues, etc., have been refilmed to ensure the best possible image / Les pages totalement ou partiellement obscurcies par un feuillet d'errata, une pelure, etc., ont été filmées à nouveau de façon à obtenir la meilleure image possible.
- Opposing pages with varying colouration or discolourations are filmed twice to ensure the best possible image / Les pages s'opposant ayant des colorations variables ou des décolorations sont filmées deux fois afin d'obtenir la meilleure image possible.

This item is filmed at the reduction ratio checked below /
Ce document est filmé au taux de réduction indiqué ci-dessous.

10x		14x		18x		22x		26x		30x	
<input type="checkbox"/>	<input type="checkbox"/>	<input type="checkbox"/>	<input type="checkbox"/>	<input type="checkbox"/>	<input type="checkbox"/>	<input checked="" type="checkbox"/>	<input type="checkbox"/>	<input type="checkbox"/>	<input type="checkbox"/>	<input type="checkbox"/>	<input type="checkbox"/>
	12x		16x		20x		24x		28x		32x

The copy filmed here has been reproduced thanks to the generosity of:

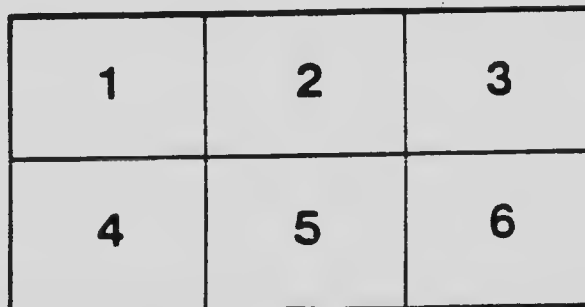
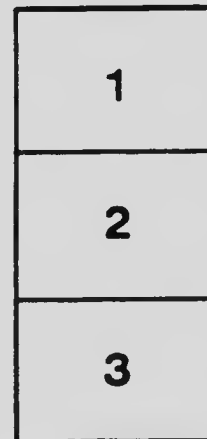
British Columbia Archives and Records Service.

The images appearing here are the best quality possible considering the condition and legibility of the original copy and in keeping with the filming contract specifications.

Original copies in printed paper covers are filmed beginning with the front cover and ending on the last page with a printed or illustrated impression, or the back cover when appropriate. All other original copies are filmed beginning on the first page with a printed or illustrated impression, and ending on the last page with a printed or illustrated impression.

The last recorded frame on each microfiche shall contain the symbol \rightarrow (meaning "CONTINUED"), or the symbol ∇ (meaning "END"), whichever applies.

Maps, plates, charts, etc., may be filmed at different reduction ratios. Those too large to be entirely included in one exposure are filmed beginning in the upper left hand corner, left to right and top to bottom, as many frames as required. The following diagrams illustrate the method:



L'exemplaire filmé fut reproduit grâce à la générosité de:

British Columbia Archives and Records Service.

Les images suivantes ont été reproduites avec le plus grand soin, compte tenu de la condition et de la netteté de l'exemplaire filmé, et en conformité avec les conditions du contrat de filmage.

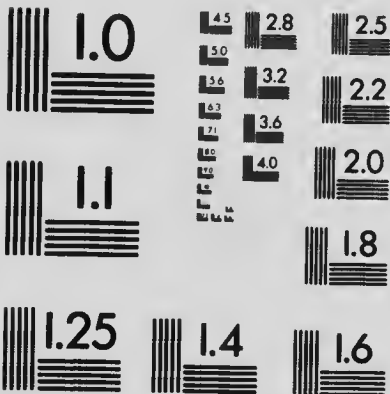
Les exemplaires originaux dont le couverture en papier est imprimée sont filmés en commençant par le premier plat et en terminant soit par la dernière page qui comporte une empreinte d'impression ou d'illustration, soit par le second plat, selon le cas. Tous les autres exemplaires originaux sont filmés en commençant par la première page qui comporte une empreinte d'impression ou d'illustration et en terminent par la dernière page qui comporte une telle empreinte.

Un des symboles suivants apparaîtra sur la dernière image de chaque microfiche, selon le cas: le symbole \rightarrow signifie "A SUIVRE", le symbole ∇ signifie "FIN".

Les cartes, planches, tableaux, etc., peuvent être filmés à des taux de réduction différents. Lorsque le document est trop grand pour être reproduit en un seul cliché, il est filmé à partir de l'angle supérieur gauche, de gauche à droite, et de haut en bas, en prenant le nombre d'images nécessaire. Les diagrammes suivants illustrent la méthode.

MICROCOPY RESOLUTION TEST CHART

(ANSI and ISO TEST CHART No. 2)



APPLIED IMAGE Inc

1653 East Main Street
Rochester, New York 14609 USA
(716) 482 - 0300 - Phone
(716) 288 - 5989 - Fax

NELSON FAIR

September 20-1-2, 1905

*PRIZE LIST, RULES
and REGULATIONS*



*Embraces the Districts of
East Kootenay, West
Kootenay and
Yale*

NELSON, B. C.

"EVERYTHING IN HARDWARE"

WOOD, VALLANCE HARDWARE Co., LIMITED.

Wholesale and Retail
Shelf and Heavy Hardware
Mine, Smelter and Mill
Supplies
Stoves and Ranges

WE have established a reputation for prompt shipment.
Orders forwarded same day as received. ~ ~ ~

Nelson, B.C.

LET US KNOW YOUR WANTS





FRUIT TABLE, NELSON FAIR, 1904.

Standard Furniture

Company

Furniture, Carpets and
Linoleums

We Furnish Hotels, Offices, Schools and
Private Residences at Rock Bottom Prices

Undertakers and
Embalmers

Mail Orders a Specialty

Standard Furniture
Company



Baker Street

Nelson Fair

— 1905 —

Under the Auspices of the Nelson
Agricultural and Industrial Association of British Columbia



To be Held at Nelson, B. C., Sep-
tember, 20th, 21st, and 22nd, 1905

ENTRIES CLOSE SATURDAY, SEPTEMBER 16TH, 1905

PROGRAMME, RULES
AND REGULATIONS

NW
971.315
N432
+ 1905

P. Burns & Co.

WHOLESALE AND RETAIL

Meat Merchants

AND LIVE STOCK DEALERS

BRANCHES AT

Kaslo
Sandon
Revelstoke
Trail
Grand Forks
Midway
Phoenix
Greenwood
Rossland
Moyie
Ferne
Cranbrook
Also in Alberta
Coast Cities
and the Yukon

HEAD OFFICE

Calgary, Alberta



HEAD OFFICE FOR WEST KOOTENAY

Nelson, B. C.

The Nelson Agricultural and Industrial Association

REGISTERED UNDER AGRICULTURAL AND HORTICULTURAL SOCIETY ACT



Officers and Directors, 1905.

John Houston, M. P. P. Hon. Pres. ✓
 W. A. Golliber, M. P. Hon. Vice-Pres. ✓
 H. Wright, M. P. P. Hon. 2nd Vice-Pres. ✓
 James Johnstone..... President ✓
 E. C. Traves..... Vice-President ✓
 J. E. Annable..... Secretary ✓
 J. A. Kirkpatrick Treasurer ✓

HON. DIRECTORS

M. Burill, Grand Forks ✓
 G. O. Buchanan, Kaslo ✓
 R. J. Long, Creston ✓
 A. B. Buckworth, Ymir ✓
 C. R. Hamilton, Rossland ✓
 M. McInnis, Cranbrook ✓
 Fred Adie, Wanita ✓
 D. F. Jelly, Trail ✓
 Chas. Rykert, Rykerts ✓
 W. Hunter, Silverton ✓
 D. S. McVannell, Slocan City ✓
 A. R. Wilson, Michel ✓
 Geo. R. Naden, Greenwood ✓

DIRECTORS

P. E. Wilson ✕
 James Tarry ✕
 J. W. Holmes ✓
 Fred. A. Starkey ✓
 J. A. Kirkpatrick ✓
 W. S. Pearcy ✓
 J. F. Weir ✕
 C. D. Jarvis ✕
 J. A. Irving ✓
 James McPhee ✓
 A. D. Emory ✓
 A. B. Shannon ✓
 C. W. Busk ✓
 A. H. Clements ✕
 John Hyslop ✓
 C. W. Young ✓

HON. LADY DIRECTORS

Mesdames W. Rutherford, H. Bird, W. O. Rose, W. A. Macdonal, Nagle.

CHAIRMEN OF COMMITTEES

Live Stock, J. W. Holmes	Bread and Preserves,
Poultry, W. S. Pearcy	J. F. Weir
Dogs, J. D. Jarvis	Mining, James Johnstone
Fruits, John Hyslop	Building, J. J. Malone
Vegetables, A. B. Shannon	Police and Grounds,
Fancy Work, A. D. Emory	E. C. Traves
Flowers, C. W. Busk	Sports and Amusements,
Decoration, J. A. Irving	J. McPhee
Painting, C. W. Young	Finance, F. A. Starkey

Imperial Bank of Canada

Capital Paid-up \$3,000,000.
Reserve Fund \$3,000,000.

DIRECTORS

R. T. MERRITT, - - - President
D. R. WILKIE, - - - Vice-President
W. RAMSAY ROBERT JAFFRAY ELIAS ROGERS WM. HENDRIE
J. KERR OSBORNE CHARLES COCKSHUTT

HEAD OFFICE - TORONTO

D. R. WILKIE - General Manager
E. HAY - Assistant General Manager
W. MOFFAT - Chief Inspector
R. A. LYON - Inspector

BRANCHES

Arrowhead, B. C.	Listowel, Ont.	Rosthern, Sask.
Balgonie, Assa.	Montreal, Que.	Sault Ste. Marie, Ont.
Bolton, Ont.	Nelson, B. C.	St. Catharines, Ont.
Brandon, Man.	Niagara, Falls, Ont.	St. Thomas, Ont.
Calgary, Alta.	New Liskeard, Ont.	Strathcona, Alta.
Cranbrook, B. C.	North Bay, Ont.	Toronto, Ont.
Essex, Ont.	Ottawa, Ont.	Trout Lake, B. C.
Edmonton, Alta.	Portage La Prairie, Man.	Vancouver, B. C.
Fergus, Ont.	Port Colborne, Ont.	Victoria, B. C.
Galt, Ont.	Prince Albert, Sask.	Welland, Ont.
Golden, B. C.	Rat Portage, Ont.	Wetaskiwin, Alta.
Hamilton, Ont.	Regina, Assa.	Winnipeg, Man.
Ingersoll, Ont.	Revelstoke, B. C.	Woodstock, Ont.

AGENTS

LONDON, ENG.—Lloyds Bank Limited
FRANCE—Credit Lyonnais
NEW YORK—Bank of the Manhattan Company
CHICAGO—First National Bank.

Special Attention Given to Collections

J. M. LAY, MANAGER

CONSTITUTION

Article 1.—This Society shall be known by the name of "The Nelson Agricultural and Industrial Association.

Article 2.—The objects of this Association shall be the advancement of the interests of agriculture, fruit-growing, stock-raising, and the industrial interest of South Eastern British Columbia.

Article 3.—The officers of this Association shall be a President, a Vice-President, a Secretary and a Treasurer, who, together with sixteen members, shall constitute a Board of Directors and shall hold office from the date of their election until the election of their successors. Eight members of the said Board shall constitute a quorum thereof.

Article 4.—The President shall preside at all meetings of the Association. He shall vote only on the occasion of the election of officers and in case of a tie. He shall sign all financial and official documents emanating from the Secretary and not otherwise provided for. He shall have a general supervision of all matters pertaining to the interests of the Association and its annual exhibitions. In the absence of the President, the Vice-President shall act; and in the absence of both of them, the Association may choose a Chairman by open vote unless voting by ballot be requested by two or more members, when the vote shall be taken by ballot.

Article 5.—The Secretary shall preserve the minutes of all meetings of the Association and of its Board of Directors in a book or books to be kept by him for such purposes; and shall conduct the correspondence of the Association and of the Board of Directors; record the names and receive the entrance fees of all persons who are or who desire to become members of the Association, giving to each a receipt for the same, and shall pay to the Treasurer without needless delay all monies that shall have been received by him; and he shall furnish such information to the members of the Association at its annual meetings and oftener, if required by the Board of Directors so to do.

Article 6.—It shall be the duty of the Treasurer to receive all monies payable and all donations made to the Association, and to deposit them in some Bank for safe-keeping; to pay all orders drawn upon him by the Secretary and countersigned by the President or Vice-President; to keep a correct account of all monies received and disbursed by him; and he shall make a yearly report to the Association at its annual meeting, and oftener if required by the Board of Directors so to do.

RANCHERS

What Can You Sell Us

?

Let Us Hear From You. We Have Built Our Reputation on Honest and Reliable Dealing.

WE SELL

**Groceries,
Provisions
and Feed.**

We Buy
in Car
Lots.
Our Goods
are Fresh
and Prices
Right

Bell Trading Co'y.

Baker Street, Nelson, B. C.

CONSTITUTION (Continued)

Article 7.—The Board of Directors shall have the management of the affairs of the Association in the interim of its annual or other more frequent meetings. It shall fill all vacancies occurring between the annual election and make all necessary arrangements and preparations for all meetings and for the annual exhibitions of the Association. The Board shall have power to make By-Laws (not inconsistent with the Constitution) and arrange the times and places for the holding of its own meetings. It shall cause an audit to be made at least once in every year of the books of the Treasurer, shortly prior to the annual meeting of the Association to be presented thereto.

Article 8.—The names of the members of the Association shall be registered in a book to be kept for that purpose by the Secretary. The annual membership fee shall be two dollars, payment of which shall entitle each member to compete for any or all prizes of the Association free of charge and shall likewise entitle such member to free access to all exhibitions of the Association which shall be held during the year for which he or she is a member.

Article 9.—The Association shall hold its annual exhibition at Nelson and at such time in each year as may be determined by its Board of Directors.

Article 10.—The annual meeting for the election of officers and for the transaction of the usual business of the Association shall be held in such place in the City of Nelson as may be announced, at 2 o'clock, p. m., on the first Thursday in November in each year, and such election shall be by ballot.

Article 11.—Special meetings of the Association shall be called by giving notice thereof in two consecutive issues of a paper published in the City of Nelson. At least ten days' notice of such meeting shall be given from the first publication of such notice. They shall be called at the written request of not less than ten members of the Association or at the request of the Board of Directors.

Article 12.—At any meeting of the Association ten members thereof shall form a quorum.

Article 13.—All amendments to this Constitution shall be presented in writing at an annual meeting, when, if agreed to by two-thirds of the members present, they shall be adopted.

AMENDMENT TO ARTICLE 3

Sub-section "A"—There shall be elected at each annual meeting an Hon. President, two Hon. Vice-Presidents, and fifteen Hon. Directors, five of the Hon. Directors to be ladies, and the Hon. Officers or Directors need not be members of the Association.

KERR & CO,

NEW CASH
STORE

MAKE this store your headquarters during the Fair. You will find everything New, Choice, and Select. New Mantles, Suits, Dress Goods, Rain Coats and Millinery. Our staple stock you will find well assorted, and prices down low.

Madden Block
Corner
Ward and Baker Sts.

KERR & CO,

Riverside Nurseries

GRAND FORKS, B.C.

Home-Grown, Acclimatized

Fruit Trees, Berry Plants,

Shade and Ornamental

==== Trees =====



Martin Burrell, Prop.

CASH
RE

Rules and Regulations

- 1.—**Entries**—All entries for competition must be made to the Secretary before Saturday, September 16th.
- 2.—In the Live Stock classes the entry must, in every instance, be made in the name of the bona fide owner of the animal, and unless this rule be observed no premium will be awarded or if awarded will be withheld.
- 3.—In all other classes entries must be made in the name of the producers or manufacturers only, and by such producers in person or their agents duly authorized. Any person making entries as an agent for more than one producer or manufacturer must pay the usual entry fee for each of such parties.
- 4.—The show grounds will be open for the reception of exhibits one week before the commencement of the show. Any exhibit may be shipped to the care of the Secretary, but in no case will such exhibit be brought on to the grounds and placed on exhibition except by and at the expense of the owner or his authorized agent.
- 5.—On the entry of each exhibit a card will be furnished the exhibitor, specifying the Class, Division and number of entry, which card must remain attached to the exhibit during the Exhibition.
- 6.—Pens will be provided for Sheep and Hogs, hitching posts and sheds for Cattle and Horses, which must be tied or otherwise not judged.
- 7.—All Poultry and Pet Stock must be on the grounds on the evening of the 19th September, and remain until the close of the Exhibition.
- 8.—Exhibitors of Live Stock, on arriving with their exhibits, will apply to the Yard Committee, who will inform them where they are to be placed.
- 9.—Exhibitors must at all times give the necessary personal attention to whatever they may have on Exhibition, and at the close of the show take charge of same.
- 10.—Though the Directors will take reasonable precautions to insure the safety of the exhibits sent to the Show, they wish it to be distinctly understood that the owners themselves must take the risk of exhibiting them, and should any exhibit be accidentally injured, lost or stolen, the Directors will give all assistance in their power towards recovery of same, but will not make any payment for the value thereof.
- 11.—Non-members may enter any articles on paying entrance fee for said article. Horses, Cattle, 20 per cent. of prize competed for; all others 10 per cent.

W. G. GILLETT

**Contractor
and
Builder**

SOLE AGENTS FOR THE

**Porto Rico Lumber Co.,
LIMITED**

Retail Yards. Rough and Dressed Lumber. Turned Work and Brackets, Coast Lath and Shingles, Sash and Doors. Cement, Brick and Lime for sale. Automatic Grinder.

Yard and Factory Vernon Street, east of Hall.



P. O. Box 232. Telephone 178.
NELSON, B. C.

THE CITY BOAT HOUSE

W. J. ASTLEY, Proprietor

ALL KINDS OF

**BOATS and
CANOES**

For Sale or Hire at all Hours. Boats
Built to Order or Repaired.

First-Class Work
Guaranteed

BOX 188

Nelson, B.C.

THE CITY BOAT HOUSE

STAIRWAY AT THE STEAM BOAT LANDING FOOT OF HALL STREET

RULES AND REGULATIONS. (Continued)

12.—Exhibits will be received at the hall up till 2 p. m., September 19th. Live Stock must be in place on the grounds at 7 p.m. on September 19th.

13.—Exhibits can be sent to the Secretary by parties not wishing to attend the show.

14.—Judges will be appointed by the Board, and will receive a circular informing them of the fact and inviting them to act.

15.—The Judges will report to the Secretary on the grounds.

16.—No person shall act as Judge in any class in which he is an exhibitor. In the different classes of Live Stock all awards shall be made by ballot and without consultation. It shall be the duty of the Judges, before leaving the grounds or city, to ascertain whether any protests have been filed against their awards in any class they have judged, in order that explanations may be duly presented to the Board.

17.—In addition to the stated premiums offered for exhibits enumerated in the list, the Judges shall have the power to recommend premiums not enumerated, as they may consider worthy, and the Directors will determine whether any premium be awarded, and the amount of such premium. The Judges may also distinguish such animals or exhibits as they may consider deserving of notice, but which have not received prizes, by ticket with the words "Highly Commended."

18.—In judging Live Stock, regard will be had to the purity of the breed, established by pedigree, size form, action and general statistics of the various breeds, making proper allowance for age.

19.—In the Fine Arts and Mechanical Departments, diplomas will be awarded, in addition to the money prizes, to any specimen evincing great skill in its production, or deemed otherwise worthy of such distinction, on its being recommended by the Judges and approved of by the Committee, to whom all such matters shall be referred.

20.—In the absence of competition in any section, or if the stock or articles exhibited be of inferior quality, the Judges are instructed to award only such premiums as they think the articles deserving of. They will exercise their discretion as to whether they will award the first, second, third, or any premium.

21.—If there are not enough funds on hand to pay prizes in full they will be paid pro rata.

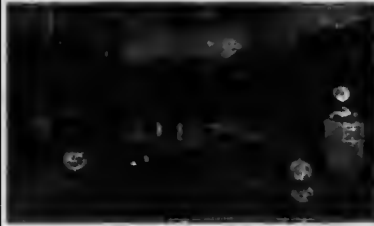
22.—The morning of the first day will be set apart for awarding premiums. All Live Stock will be judged on the first day. The grounds will be open to the public at 12 noon, the first day of the fair.

**Intending Exhibitors will please take notice that all Entries close on
Saturday, September 16th.**

J. J. WALKER

The Leading Jeweler

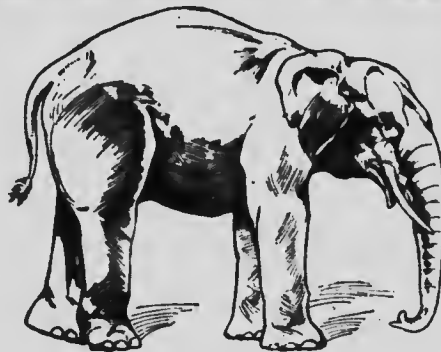
MAKES A
SPECIALTY
OF FINE
WATCH
REPAIRING



CONSULT
OUR
EXPERT
OPTICIAN

Stanley and Baker Sts. / Nelson, B.C.

Nothing Succeeds Like Success



LOOK FOR THIS SIGN

IS proven by the increased sales, during the past season of High-class, Ready-to-wear Tailored

**Men's and Boys'
Clothing**

Since adopting our present "special makes" increase in our sales have been very marked.

Try us for your next suit

J. H. WALLACE

MEN'S OUTFITTER

NELSON - - B. C.

PRIZE LIST

CLASS A—POULTRY \$235 IN PRIZES.

All poultry must be on the grounds not later than 8 p.m., September 19th, and no birds will be allowed to compete for more than one prize. Birds competing in their own class cannot be shown in the collection. Judging takes place between 8 and 10.30 o'clock on September 20th.

Entry		1st.	2nd.	3rd.
1—	Best pair Turkeys, male and female, Bronze or Black..	\$2.00	\$1.00	.50
2—	" Turkeys, male and female, White	2.00	1.00	.50
3.—	" Geese, male and female.....	2.00	1.00	.50
4—	" Ducks, male and female.....	1.50	1.00	.50
5—	" Dark Bramahs, male and female	1.50	?	.50
6—	" Light Bramahs, male and female	1.50	.0	.50
7—	" Buff Cochins, male and female	1.50	1.00	.50
8—	" Partridge Cochins	1.50	1.00	.50
9—	" Langshans	1.50	1.00	.50
10—	" Barred Plymouth Rocks.....	1.50	1.00	.50
11—	" White Plymouth Rocks.....	1.50	1.00	.50
12—	" Buff Plymouth Rocks.....	1.50	1.00	.50
13—	" Silver Laced Wyandotte.....	1.50	1.00	.50
14—	" White Wyandottes	1.50	1.00	.50
15—	" Golden Wyandottes	1.50	1.00	.50
16—	" Black Minorcas	1.50	1.00	.50
17—	" White Minorcas	1.50	1.00	.50
18—	" Polish, any kind	1.50	1.00	.50
19—	" Brown Leghorns	1.50	1.00	.50
20—	" White Leghorns	1.50	1.00	.50
21—	" Buff Leghorns	1.50	1.00	.50
22—	" Rose Comb Leghorns, any kind	1.50	1.00	.50
23—	" Hamburgs, any kind	1.50	1.00	.50
24—	" B. B. Red Game	1.50	1.00	.50
25—	" Cornish Indian Game	1.50	1.00	.50
26—	" Duck Wing Game	1.50	1.00	.50
27—	" B. S. Game	1.50	1.00	.50
28—	" Red Pyle Game	1.50	1.00	.50

Entries Close Saturday, September 16th.

WHY NOT PATRONIZE

THE KOOTENAY CIGAR COMPANY

BAKER STREET

NELSON, B. C.

MANUFACTURERS OF THE FAMOUS



UNION FACTORY

This Cigar is Known all Over the Kootenays, and is Es-
teemed by Smokers for its Perfect Shape, Mild Flavor and
General Excellence. The Best that Money can Buy. Try
One. On Sale Everywhere.

POULTRY—(Continued)

Entry		1st.	2nd.	3rd.
29—	"	Plt Game	1.50	1.00 .50
30—	"	Andalusian	1.50	1.00 .50
31—	"	Spanish, Black	1.50	1.00 .50
32—	"	Orphingtons, Buff	1.50	1.00 .50
33—	"	Bantams, Black Breasted.....	1.50	1.00 .50
34—	"	Bantams, Duck Wing.....	1.50	1.00 .50
35—	"	Guinea Fowl	1.50	1.00 .50
36—	"	Turkeys, bred in 1905, any breed	1.50	1.00 .50
37—	"	Geese, bred in 1905, any breed	1.50	1.00 .50
38—	"	Ducks, bred in 1905, any breed	1.50	1.00 .50
39—	"	Anconas	1.50	1.00 .50
40—6		Best Developed Chickens, any breed, not less than three being Pullets	3.00	2.00 1.50

(Each to compete in their own class, viz., American, Asiatic and Mediterranean.)

The Association will pay prizes of \$1.00 first, and 75 cents second, for the Best Cockerel and pullet in each class.

PIGEONS

		1st.	2nd.
41—	Best pair Fantails, white	\$1.00	.50
42—	" Fantails, black	1.00	.50
43—	" Any other variety	1.00	.50

CAGE BIRDS

44—	Best Canary, green cock	1.00	.50
45—	" " yellow cock, free from black marks	1.00	.50
46—	" " crested cock	1.00	.50
47—	" " splashed cock	1.00	.50
	Best collection of Canary Birds.....	5.00	3.00
48—	" Other songster	1.00	.50
49—	" Parrot	1.00	.50
50—	" Cockatoo	1.00	.50

ORNAMENTAL

51—	Best pair Pheasant, any variety.....	2.00	1.00
52—	" Quail, any variety	2.00	1.00
53—	" Swans, any variety	2.00	1.00

SWEEPSTAKES

		1st.	2nd.	3rd.
54—	To the exhibitor showing the largest and best display of Poultry	\$15.00	\$10.00	\$5.00

HARRY BIRD

R. MONTAGU BIRD

H. & M. BIRD

Real Estate Loans and Insurance

Properties Managed and Rents Collected. Conada Permanent Mortgage Company's Loans at 8% on first mortgage. C. P. R. Town Lots, one-third cash, balance 6 and 12 months. Private funds to loan on mortgage. Best business man's accident policy in existence.

Office: Baker St., Nelson, B.C.

THE QUEEN STUDIO

NELSON, B. C.

ALLEN LEAN, PHOTOGRAPHER.



**Views, Portraits,
Picture Framing.**

Headquarters for Amateur
Photographers

The Leading Art Gallery in the
Kootenays.

RABBITS

Entry	1st.	2nd.
55—Best pair Lop-eared Rabbits	1.00	.50
56— “ Common Rabbits	1.00	.50
57— “ Belgian Hares	1.00	.50

EGGS

58—Best Hens' Eggs, fresh one dozen, white, heaviest	1.00	.50
59— “ Hens' Eggs, fresh, one dozen, brown, heaviest	1.00	.50
60— “ Turkey Eggs, fresh one dozen, heaviest	1.00	.50
61— “ Duck Eggs, fresh one dozen, heaviest	1.00	.50

CLASS B.—FRUITS

\$363.00 in cash appropriated for this department, besides the Silver Cup, and Diplomas for District Exhibit.

All Fruit must be in place by 7 o'clock September 19th. Judging will begin at 8 o'clock, a. m. September 20th.

No Exhibit can compete for two prizes; any Fruit exhibited in its own Class cannot compete in Collection of Fruit.

APPLES—Five of Each.

Entry	1st.	2nd.	3rd.
1—Red Astrachan	\$1.00	.75	.50
2—Yellow Transparent	1.00	.75	.50
3—Gravenstein	1.00	.75	.50
4—Alexander	1.00	.75	.50
5—Maiden's Blush	1.00	.75	.50
6—Covert	1.00	.75	.50
7—Jeffries	1.00	.75	.50
8—Snow	1.00	.75	.50
9—Wealthy	1.00	.75	.50
10—St. Lawrence.....	1.00	.75	.50
11.—Duchess	1.00	.75	.50
12—Bienheim Orange	1.00	.75	.50
13—McIntosh	1.00	.75	.50
14—Any other Fall Variety	1.00	.75	.50
15—Pewaukee	1.00	.75	.50
16—King of Tompkins	1.00	.75	.50
17—Ribstone Pippins	1.00	.75	.50
18—Rhode Island Greening	1.00	.75	.50
19—Baldwin	1.00	.75	.50
20—Northern Spy	1.00	.75	.50
21—Spitzenburg	1.00	.75	.50
22—Golden Russett	1.00	.75	.50

S. H. Seaney

IMPORTER OF

*Washington and California Fruits
Hazelwood Ice Cream*



*Hand Painted Fancy Chocolate Boxes
and Baskets, J. Ganong's G. B. Choco-
lates, Webb's Chocolates, Ramsey
Bros. Chocolates and Candies. . . .*

APPLIES—(Continued)

Entry	1st.	2nd.	3rd.
23—Roxbury	1.00	.75	.50
24—Mann	1.00	.75	.50
25—Canada Red	1.00	.75	.50
26—Yellow Newton Pipplin	1.00	.75	.50
27—Stark	1.00	.75	.50
28—Grimes' Golden Pippins	1.00	.75	.50
29—Hubbardston Nonsuch	1.00	.75	.50
30—Ontarlo	1.00	.75	.50
31—Blue Permain	1.00	.75	.50
32—Wagener	1.00	.75	.50
33—Ben Davis	1.00	.75	.50
34—Talman Sweet	1.00	.75	.50
35—Wolf River	1.00	.75	.50
36—Fall Pipplin	1.00	.75	.50
37—Fallawater	1.00	.75	.50
38—Bell Flower	1.00	.75	.50
39—Jonathan	1.00	.75	.50
40—Rome Beauty	1.00	.75	.50
41—Any other winter variety	1.00	.75	.50
42—Best packed box of apples	2.00	1.00	.50
PEARS—Five of Each			
43—Bartlett	1.00	.75	.50
44—Sickel	1.00	.75	.50
45—Clapp's Favorite	1.00	.75	.50
46—Salone	1.00	.75	.50
47—Any other early variety	1.00	.75	.50
48—Flemish Beauty	1.00	.75	.50
49—Louise Bonne de Jersey	1.00	.75	.50
50—Howell	1.00	.75	.50
51—Duchess d'Angeleme	1.00	.75	.50
52—Idaho	1.00	.75	.50
53—Keiffers Hybrid	1.00	.75	.50
54—Any other variety	1.00	.75	.50
55—Buerre Clairgeau	1.00	.75	.50
56—Buerre d'Anjou	1.00	.75	.50
57—Winter Nellis	1.00	.75	.50
58—Vicar of Wakefield	1.00	.75	.50
59—La Cotte	1.00	.75	.50
60—Any other Winter variety	1.00	.75	.50
PLUMS—Twelve of Each			
61—Bradshaw	1.00	.75	.50
62—Grand Duke	1.00	.75	.50
63—Kelsey (Japan)	1.00	.75	.50



WHEN YOU WANT

Stationery or Books

Toys or Dolls

Games for the long evenings

or Gift Goods (Go to Write to

W. G. THOMSON

BOOK SELLER AND STATIONER

Phone 34

Baker Street, Nelson

PLUMS—(Continued)

Entry	1st.	2nd.	3rd.
64—Lombard	1.00	.75	.50
65—Washington	1.00	.75	.50
66—Yellow Egg	1.00	.75	.50
67—Abundance	1.00	.75	.50
68—Damson	1.00	.75	.50
69—Wickson	1.00	.75	.50
70—Peach	1.00	.75	.50
71—Italian Prune	1.00	.75	.50
72—French Prune	1.00	.75	.50
73—German Prune	1.00	.75	.50
74—Glant Prune	1.00	.75	.50
75—Burbank's Sugar	1.00	.75	.50
76—Imperial Gage	1.00	.75	.50
77—Pond's Seedling	1.00	.75	.50
78—Any other variety	1.00	.75	.50
79—Peaches, Early Crawford—6.....	1.00	.75	.50
80— " Triumph—6	1.00	.75	.50
81— " Any other variety, named,—6	1.00	.75	.50
82— " Best packed box for shipping	1.00	.75	.50
83—Grapes, 4 bunches Campbell's Early.....	1.00	.75	.50
84— " 4 bunches Worden	1.00	.75	.50
85— " 4 bunches Moore's Diamond.....	1.00	.75	.50
86— " 4 bunches Roger's No. 9 (Lindley)	1.00	.75	.50
87— " 4 bunches Concord	1.00	.75	.50
88— " Any other variety	1.00	.75	.50
89— " Best collection, 2 bunches each	2.00	1.00	.50
90—Quince, any variety—5	1.00	.75	.50
91—Nectarine, any variety—6	1.00	.75	.50
92—Crab Apples, Transcendent—12	1.00	.75	.50
93— " Hyslop—12	1.00	.75	.50
94— " Montreal Beauty—12.....	1.00	.75	.50
95— " Siberian—12	1.00	.75	.50
96— " Whitney—12	1.00	.75	.50
97— " Martha—12	1.00	.75	.50
98— " Any other variety—12	1.00	.75	.50
99—Apricots, any variety—6	1.00	.75	.50
100—Best packed Plums for shipping.....	1.00	.75	.50
101—Blackberries, any variety, 1 plate.....	1.00	.75	.50
102—Best Prunes, 25 lbs, light, dry	1.50	1.00	.50
103—Best Prunes, 25 lbs., dark dry	1.50	1.00	.50
104—Best Dried Apricots, 25 lbs	1.50	1.00	.50
Largest and Best Collection of Fruits—J. A. McDonald... \$10.00 in Gold			
Best display of Fruits on branches—not less than 4 varieties—Value \$7.00			
Best designs of Fruits grown by Exhibitor			
Cash \$10.00			



Headquarters For
ALL KINDS OF

**Guns, Rifles and
Ammunition**

Athletic Goods, Fine Fishing
Tackle and Trappers
Supplies

We Carry the Best Goods at the Low-
est Prices

Nelson Hardware Company, Sportsmen's Headquarters.
BAKER AND JOSEPHINE STS., NELSON

The Cabinet Cigar Store

IMPORTER OF

G. B. D. PIPES

of all the new shapes and styles
also Cigar and Cigarette Cases
and Holders and Amber Goods

Special Prices to the Trade.

DEALER IN

Cigars, Cigarettes,

IMPORTER OF

**Star, Boot Jack, Piyer Heid-
sieck and Dukes Mixture.**

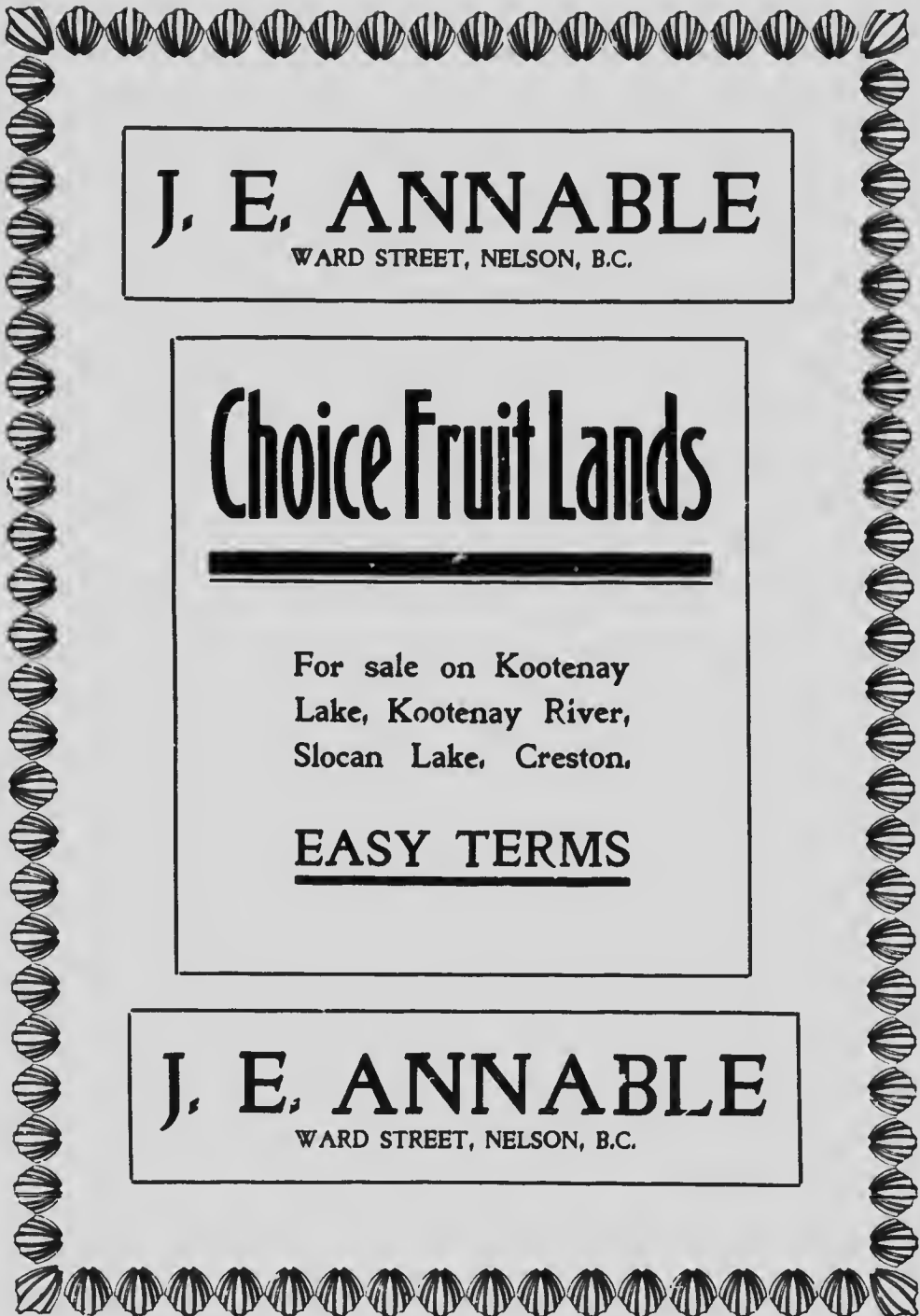
Special Prices to the Trade.

G. B. MATTHEW, Prop.

CLASS C. VEGETABLES

Class C and D.—\$180.00 in Cash Prizes. Everything in this department must be in the building by 7 o'clock on the evening of the 19th.

Entry	1st.	2nd.
1—Potatoes, Everets Early, 25 lbs.....	\$1.50	\$1.00
2— " Early Rose, 25 lbs.	1.50	1.00
3— " Carmen, 25 lbs.....	1.50	1.00
4— " Beauty of Hebron, 25 lbs.....	1.50	1.00
5— " Burbanks, 25 lbs....	1.50	1.00
6— " Largest, 25 lbs..	1.00	.50
7— " Any other variety named, 25 lbs.	1.50	1.00
8— " Any other variety, not grown in District before..	1.50	1.00
9— " 3 varieties, correctly named, 15 lbs, each—Special Prize by West Kootenay Butcher Co.—One 20-lb. Ham.		
10—Turnips, 6 Table, any variety	1.00	.75
11—Carrots, Short Horn—6	1.00	.75
12— " Intermediate—6	1.00	.75
13—Parsnips, any variety—6	1.00	.75
14—Cabbage, 2 best Summer	1.00	.75
15— " 2 best Winter	1.00	.75
16— " 2 best Red	1.00	.75
17—Brussels Sprouts, 3 stalks	1.00	.75
18—Savoys, 2 best and largest	1.00	.75
19—Cauliflower, best 2 heads	1.00	.75
20—Onions, 12 white	1.00	.75
21— " 12 yellow	1.00	.75
22— " 12 red	1.00	.75
23— " Pickling, 1 quart	1.00	.75
24—Peas, 10 lbs. Unshelled	1.00	.75
25—Beans, 1 quart, in pod, yellow.....	1.00	.75
26— " 1 quart, in pod, green	1.00	.75
27—Corn, Table, 6 ears	1.00	.75
28—Beets, long—6	1.00	.75
29— " Globe—6	1.00	.75
30—Celery, anyvariety—6 bunches	1.00	.75
31—Lettuce, 6 heads	1.00	.75
32—Radish, Long, best dish—12	1.00	.75
33— " Turnip, best dish—12	1.00	.75
34— " Winter, best dish—12	1.00	.75
35—Squash, best 2 Hubbard	1.00	.75
36— " Golden Scalloped	1.00	.75
37— " Heaviest	1.00	.75
38— " Best 2 any other variety.....	1.00	.75
39—Pumpkins for Table—2	1.00	.75



J. E. ANNABLE
WARD STREET, NELSON, B.C.

Choice Fruit Lands

For sale on Kootenay
Lake, Kootenay River,
Slocan Lake, Creston.

EASY TERMS

J. E. ANNABLE
WARD STREET, NELSON, B.C.

VEGETABLES—(Continued)

Entry	1st.	2nd.
40—Pumpkins, Largest—2	1.00	.75
41—Vegetable Marrow—2	1.00	.75
42—Tomatoes, best 12.....	1.00	.75
43— " Best collection, 4 varieties—6 each	1.50	1.00
44—Cucumbers, best 6	1.00	.75
45— " best Pickling	1.00	.75
46—Melons, Water, best 2	1.00	.75
47— " Musk, best 2	1.00	.75
48—Citron, best 2	1.00	.75
49—Sunflowers, best 2	1.00	.75
50—Peppers—6	1.00	.75
51—Kale, 2 heads	1.00	.75
52—Best collection of Vegetables, distinct from other entries, not less than 10 varieties to compete, and to be correctly named	5.00	3.00

CLASS D FIELD PRODUCE

All Exhibits must be properly classified by name, must be grown by Exhibitor and be the produce of 1905.

Entry	1st.	2nd.
1—Wheat, Autumn, 1 sheaf	\$3.00	\$1.50
2— " Spring, 1 sheaf	3.00	1.50
3—Oats, white, 1 sheaf	3.00	1.50
4—Oats, black, 1 sheaf	3.00	1.50
5—Peas, White, large, 25 lbs.	3.00	1.50
6— " White, small, 25 lbs.	3.00	1.50
7—Rye, 1 sheaf	3.00	1.50
8—Beans, Field, 25 lbs.	3.00	1.50
9—Hops, best selection	1.50	.75
10—Turnips, 5 Swede, for cattle	1.50	.75
11— " 5 White, for cattle	1.50	.75
12—Mangold Wurtzel, 5 Globe	1.50	.75
13— " " 5 Long Red	1.50	.75
14—Sugar Beet—5	1.50	.75
15.—Carrots, White—6	1.50	.75
16—Hay, Baled Clover	2.00	1.00
17— " Baled Timothy	2.00	1.00
18— " Baled Meadow Hay	2.00	1.00
19—Timothy Seed, 25 lbs.	2.00	1.00
20—Red Clover Seed, 25 lbs.	2.00	1.00
21—Orchard Grass, 25 lbs.	2.00	1.00
22—Rye Grass, 25 lbs.	2.00	1.00
23—Corn or Maize, 12 ears	1.50	.75

If You Require Photo- graphic Work

And want to get it right.
Go to

WADDS BROS.

The processes they employ are in every respect the most up-to-date.

Their assistants the most expert.

Their instruments the newest.

Their chemicals the purest.

Their mountings the tastiest procurable

The result is artistic and tectural excellence, and absolute permanency in the the finished article, and general satisfaction to their patrons.

Don't believe that anyone can make photographs because they claim to. Compare their work with Wadds Bros. The best is the cheapest, don't accept anything else.

All kinds of photographic work done and entire satisfaction guaranteed.

STUDIO Up Stairs, first door
west of the Ashdown
Hardware Co., Baker Street.

CLASS E - MISCELLANEOUS

\$50.00 in cash prizes and 17 Diplomas. Entries close Saturday, September 16th. All exhibits must be in place by 7 o'clock September 19th.

Entry	1st.	2nd.
1—Home Made Buns, 1 dozen—Special Prize		
2—Currants, Black, 1 qt., not preserved.....	1.00	.75
3— " Red, 1 qt., not preserved.....	1.00	.75
4— " White, 1 qt., not preserved.....	1.00	.75
5—Gooseberries, 1 qt., not preserved.....	1.00	.75
6—Strawberries, 1 qt., not preserved	1.00	.75
7—Raspberries, Black, 1 qt., not preserved	1.00	.75
8—Raspberries, Red, 1 qt., not preserved.....	1.00	.75
9—Cultivated Fruits, collection of not less than 4 varieties, not preserved	3.00	2.00
10—Cultivated Fruit Preserves, collection of not less than 4 varieties, named, and not less than one pint of each	2.00	1.00
11—Jellies, collection of not less than 4 varieties, named	2.00	1.00
12—Currants, Black, 1 qt., preserved	1.00	.75
13— " Red, 1 qt., preserved	1.00	.75
14— " White, 1 qt., preserved	1.00	.75
15—Gooseberries, 1 qt., preserved	1.00	.75
16—Raspberries, White, 1 qt., preserved.....	1.00	.75
17—Raspberries, Black, 1 qt., preserved.....	1.00	.75
18—Strawberries, 1 qt., preserved	1.00	.75
19—Raspberry Vinegar, bottle	1.00	.75
20—Home Made Wine, 3 bottles, named.....	1.50	1.00
21—Home Made Sweet Pickles	1.00	.75
22—Home Made Sour Pickles	1.00	.75
23—Home Made Catsup	1.00	.75
24—Best Display of Pastry by Bakery.....		Diploma
25—Best Display of Stoves and Ranges.....		Diploma
26—Best Display of Groceries		Diploma
27—Best Display of Furniture		Diploma
28—Best Display of Hardware		Diploma
29—Best Display of Men's Clothing.....		Diploma
30—Best Display of Furs		Diploma
31—Best Display of Millinery		Diploma
32—Best Display of Dry Goods		Diploma
33—Best Display of Fishing Tackle		Diploma
34—Best Display of Musical Instruments.....		Diploma
35—Best Display of Boots and Shoes.....		Diploma
36—Best Display of Jewelry		Diploma
37—Best Display of Plumbing		Diploma
38—Best Display of Electric Light and Gas Fixtures		Diploma
39—Best Display of Wall Paper		Diploma

*When Outfitting don't
forget that we are*

HEADQRTERS
FOR
MINERS'
SUPPLIES



We Carry a Full
Line of

Groceries and Provisions

J. A. Irving & Co.

Box 176

Tel. 161

Hourton Block

Nelson, B. C.

THE QUEEN'S HOTEL

BAKER STREET

RATES \$2.00 PER DAY

Mrs. E. C. Clarke, Proprietress.

MISCELLANEOUS—(Continued)

40—Best Display of Mattresses	Diploma
41—Best Display of Home Made Candles	3.00 2.00
42—Best Display of Cigars, Provincial Manufacture	Diploma
43—Best Display of Boats and Boat Models	Diploma

CLASS F. FLORAL
FOR AMATEURS ONLY

Entry	1st.	2nd.
1—Best Collection Petunias	1.00	.75
2—Best Collection of Asters	1.00	.75
3—Best Collection Phlox Drummondii.....	1.00	.75
4—Best Collection of Stocks	1.00	.75
5.—Best Collection of Pansies	1.00	.75
6—Best Collection of Dahlias	1.00	.75
8—Best Collection of Annuals	1.00	.75
7—Best Collection of Roses	1.00	.75
9—Best Collection of Sweet Peas, 10 varieties, 10 of each	1.00	.75
10—Best Table Bouquet	2.00	1.00
11—Best Hand Bouquet	1.00	.75
12—Best Specimen Geranium	1.00	.75
13—Best Specimen Fuchsia	1.00	.75
14—Best Floral Design	2.00	1.00
15—Best Gladiolus	1.00	.75
16—Best Begonia	1.00	.75
17—Best 3 House plants grown by girl under 15 years	1.00	.75
18—Best Plants from Greenhouse—Special Prize.		

(SEE SPECIAL PRIZE LIST)

DIPLOMAS WILL BE GIVEN FOR

Best kept Flower Garden and Lawn in the City of Nelson by Amateurs (white help only) for 25 or 30 foot lot.

Best kept Flower Garden and Lawn in the City of Nelson by Amateurs, (white help only) for lots over 30 feet frontage.

Best kept Flower Garden and Lawn in the City of Nelson by Chinese or Professional help.

Best kept Boulevard.

CLASS G.—PAINTING

Entry	1st.	2nd.
1Collection Amateur Photography	1.00	.75
2— " Hand Painted Photographs.....	1.00	.75
3—Painting on Silk	1.00	.75
4—Painting on Satin	1.00	.75
5—Painting on China or Porcelain	1.00	.75

HOTEL HUME

NELSON, B.C.

RATES \$2.50 TO \$3.00

J. Fred Hume, Proprietor

**The Place Where
Your Dollars
Bring Their Value**

High Grade Clothing, Hats
and Caps. Reliable up-to-
date Clothing for Men, Boys,
and Children. Gent's Fur-
nishings. Men's and Boy's
Shoes. Trunks and Valises.

BROWN & CO.

Baker Street

Nelson B.C.

CLASS G—(Continued)

Entry	1st.	2nd.
6—Water Color, Still Life, Flowers, Fruit, Etc.	1.00	.75
8—Water Color, Animal Life	1.00	.75
9—Oil Painting, Portrait or Figure	1.00	.75
10—Oil Painting, Landscape and Marine Work from nature	1.00	.75
11—Oil Painting, Still Life, Flowers, Fruit, Etc.	1.00	.75
12—Oil Painting, Animal Life	1.00	.75
13—Water Color, Portrait or Figure	1.00	.75
14—Pen and Ink Sketch	1.00	.75
15—Pencil Drawing	1.00	.75
16—Relief Map of West Kootenay made by Pupils of Public or High School	2.00	1.00
17—Best Collection Exhibit of Photography, Professional		Diploma
18—Best Collection Exhibit of Photography, made during the last year	1.00	.75

CLASS H.

WORK BY CHILDREN UNDER 15 YEARS OF AGE.

Entry	1st.	2nd.
1—Embroidery on Linen	1.00	.75
2—Drawn Work	1.00	.75
3—Crochet Work	1.00	.75
4—Monogram on Linen or Cotton	1.00	.75
5—Darning	1.00	.75
6—Best Dressed Doll	1.00	.75
7—Best Six Button Holes	1.00	.75
8—Best Doll's Bas'nette	1.00	.75
9—Map in Colors	1.00	.75
10—Drawing, Pencil or Crayon		Special Prize
11—Specimen Penmanship	1.00	.75
12—Drawing, Free Hand	2.00	1.00
13—Best Collection of Postage Stamps.....	2.00	1.00
14—Best Collection Souvenir Post Cards.....		

CLASS J.—FINE ARTS, LACE WORK, EMBROIDERY, ETC
FOR WORK THAT HAS NEVER TAKEN A PRIZE AT ANY EXHIBITION

Entry	1st.	2nd.
1—Point Lace	1.00	.75
2—Honiton Lace	1.00	.75
3—Battenburg	1.00	.75
4—Teneriffe or Brazilian Point Lace.....	1.00	.75
5—Duchess Lace	1.00	.75
6—Crocheted Shawl in Wool	1.00	.75
7—Crocheted Mats in Wool	1.00	.75
8—Tatting	1.00	.75

H. McCAUSLAND

RELIABLE BOOT AND SHOE DEALER

Makes a Specialty
of

**Miners
Footwear**

Expert Repairing and
Custom Work

Ladies', Gents', Boys', Girls', and
Children's

FINE SHOES

ALL THE LATEST STYLES

Baker Street

Nelson, B. C.

The Nelson Hotel

*An up-to-date hostelry where you
can be comfortably housed
and looked after*

INK & BOYD
PROPRIETORS

The rooms are sunny, warm, comfortable and well furnished. The Cafe furnishes the best meals in the city. Every effort is made to keep everything in the Cafe first-class. In the Saloon no pains are spared to treat patrons right and to give them the best wines, liquors and cigars that can be procured

CLASS J.—(Continued)

Entry	1st.	2nd.
9—Drawn Work	1.00	.75
10—Netting	1.00	.75
11—Embroidery in Mount Mellick	1.00	.75
12—Embroidery initials or Monogram.....	1.00	.75
13—Embroidery, Table Cloth	1.00	.75
14—Embroidery, Tray Cloth	1.00	.75
15—Embroidery, Tea Cosy	1.00	.75
16—Doylies, embridered	1.00	.75
17—Embroidery on Bolting Cloth	1.00	.75
18—Embroidered Sofa Cushion, any kind.....	1.00	.75
19—Embroidered Bolting Silks Sofa Cushion	1.00	.75
20—Embroidered Linen Sofa Cushion.....	1.00	.75
21—Pincushion	1.00	.75
22—Handkerchief Case	1.00	.75
23—Best old ladies' work, done by ladies over 60 years	1.00	.75
24—Patch Work Cotton Quilt	1.00	.75
25—Crazy Patch Work Quilt	1.00	.75
26—Afghan	1.00	.75
27—Babies Basinette	1.00	.75
28—Hooked Rugs (done by hand) uncut.....	1.00	.75
29—Hooked Rugs(done by hand) cut.....	1.00	.75
30—Hooked Rugs, machine made	1.00	.75

CLASS K.

FOR WORK DONE SINCE OCT 1, 1904

Entry	1st.	2nd.
1—Point Lace	1.00	.75
2—Honiton Lace	1.00	.75
3—Battenburg	1.00	.75
4—Teneriffe or Brazilian Point Lace.....	1.00	.75
5—Duchess Lace	1.00	.75
6—Lace Handkerchief	1.00	.75
7—Crocheted Shawl in Wool	1.00	.75
8—Crocheted Mats in Wool	1.00	.75
9—Tatting	1.00	.75
10—Drawn Work	1.00	.75
11—Netting	1.00	.75
12—Embroidery in Mount Mellick	1.00	.75
13—Embroidery, Table Cloth (5 o'clock).....	1.00	.75
14—Embroidery, Tray Cloth	1.00	.75
15—Embroidery, Tea Cosy	1.00	.75
16—Embroidery, Doylies	1.00	.75
17—Embroidery on Bolting Cloth	1.00	.75



Don't Take Any Chances

SEE that the feet are housed properly. Don't take any chances of breaking them in. The shoes we sell are comfortable from the first days wearing. They are stylish, too, and keep their shape because the leathers are of good quality.

The Royal Shoe Store

BAKER ST., NELSON

Agents for
SLATER SHOES

R. Andrew & Co.,
Proprietors

The *Strathcona*
B. TOMKINS. MANAGER.

CLASS K.—(Continued)

Entry	1st.	2nd.
18—Embroidered Sofa Cushion	1.00	.75
19—Bolting Silk Sofa Cushion	1.00	.50
20—Embroidered Linen Sofa Cushion.....	1.00	.75
21—Pincushion	1.00	.75
22—Handkerchief Case	1.00	.75
23—Best Hand Made Underwear	1.00	.75
24—Best Six Button Hoies	1.00	.75
25—Hand Made Apron	1.00	.75
26—Knitted Slippers	1.00	.75
27—Crocheted Slippers	1.00	.75
28—Darning (socks or stockings)	1.00	.75
29—Cross Stitch Collar and Cuffs	1.00	.75
30—Best Made Cotton Shirt Waist	1.00	.75
31—Best Hardanger	1.00	.75
32—Best Pyrography Work on Leather.....	1.00	.75
33—Best Pyrography Work on Wood.....	1.00	.75
34—Best Piece Marquetry	1.00	.75
35—Best Piece Wood Carving		Special Prize
Best Collection of Fancy Work, done at any time	5.00	3.00
Best Collection of Fancy Work, done since October 1st. 1904..	5.00	3.00

SPECIAL PRIZES

FOR PENMANSHIP BY SCHOLARS OF PUBLIC SCHOOL

Entry	1st.	2nd.
Best in Fifth Reader Classes	1.00	.50
Best in Fourth Reader Classes	1.00	.50
Best in Third Reader Classes	1.00	.50
Best in Second Reader Classes	1.00	.50
Best in First Reader Classes	1.00	.50
Best in Primary Classes	1.00	.50

Best Bread Cooked on the Nelson Coke & Gas Co.'s Stove—

 First Prize—One Gem Oxford Stove or one Steam Cooker
 and One Portable Oven

Value \$7.50

 Second Prize—One Portable Oven and One Griller

Value \$4.00

 Third Prize—One Griller

Value \$1.50

Any of these articles may be exchanged for any other article dealt in by the Company of equal value.

DONATED BY THE NELSON COKE & GAS CO., LTD.

Best Bread Made From Ogilvies' "Royal Household" Flour—

 First Prize

\$10.00

 Second Prize

5.00

DONATED BY OGILVIE FLOUR MILLS

FUNERAL DIRECTORS



FURNITURE DEALERS

ONE OF OUR SHOWROOMS

D. J. Robertson & Co.

SPECIAL PRIZES.—(Continued)

Best Bread Made From Lake of the Woods Flour—

First Prize	\$10.00
Second Prize	5.00

DONATED BY LAKE OF THE WOODSMILLING CO., LTD.

Best Bread Made From Premier Hurgarian Flour—

First Prize	\$6.00
Second Prize	\$4.00

DONATED BY THE ALEXANDER MILLING C., Brandon, Man.

Best Bread Made From Calgary Flour—

First Prize.....	\$6.00
Second Prize	\$4.00

DONATED BY THE CALGARY MILLING CO.

Best One Dozen Home Made Buns—

First Prize—Book by Mrs. Rorer, "How to Cook."	
Second Prize—Vegetables	

DONATED BY BURPEE & CO., Philadelphia.

Best Collection of Coins

\$3.00

Best Collection of Stuffed Animals, Birds, Etc.

\$15.00

Best and Largest Collection of Live Animals and Birds

\$25.00

Best Collection of Burpee's Sweet Peas—

Book on "How to Grow a Kitchen Garden of One Acre."

DONATED BY BURPEE & CO.

Best Collection of Flowers Grown From Burpee's Seeds—

Book—"Flowers For Every Home."

DONATED BY WALLIE, BURPEE & CO., Philadelphia.

	1st.	2nd.
Best Collection of Wild Flowers in the form of Bouquets by Boys attending Public School	1.50	1.00
Best Collection of Wild Flowers in the form of a Bouquet by Girl attending Public School	1.50	1.00
Best Display of Live Fish Caught in the Interior of British Columbia	8.00	
Best Collection of Souvenirs and Curios of British Columbia....	6.00	4.00
Best Collection of Sea Shells	2.00	1.00
Best Collection of Medals, Souvenirs,	2.50	1.50



FIRST FRUIT ORCHARD PLANTED ON KOOTESAY LAKE, NEAR NELSON.

MINERAL EXHIBIT

This Department is under the direction of the President of the Association, James Johnstone.

Awards will be given for district exhibit for gold ore specimens, silver and gold-copper ore. All mineral in competition must be the product of British Columbia.

Two Special Prizes are donated by E. W. Widdowson, Nelson, B.C. as follows:

- 1 Gold Medal for Best Mineralogical Sample Displayed at Exhibition.
- 1 Silver Medal for Best Display of Mineral from any one District.

Specimens winning the above Medals to be displayed in Nelson for 30 days after the Fair.

In connection with the Mineral Exhibit a Special Prize will be given for the Best Cabinet of Ore Specimens.

DISTRICT PRIZE

The President of the Association has donated a Cup to be known as the President's Cup. This is put up for the largest and best display of Fruits and Vegetables, and for this purpose the country has been divided into eight districts and the Association has selected one man in each section to look after his district, who will be paid for any expense he may be at up to \$15.00 for each district.

District No. 1 comprises all the country east of Kootenay Lake, including Crawford Bay, Creston, and Rykerts. J. E. Houghton and Fred Little in charge.

District No. 2 comprises Ainsworth, Kaslo and point north of Kaslo. G. O. Buchanan in charge.

District No. 3 comprises the country on the north side of the arm of Kootenay Lake, from Hoover's Ranch to Ainsworth. J. Hyslop and A. B. Shannon in charge.

District No. 4 comprises the country on the south side of the arm of Kootenay Lake, from Procter to Ward St., Nelson. J. A. Kelly in charge.

District No. 5 comprises the country from Ward St., Nelson to the Columbia River, Slocan River and Slocan Lake section. Jas. Williams in charge.

District No. 6 comprises the country north of Castlegar, on Arrow Lakes and Fire Valley. Robt. Sbleil in charge.

District No. 7 includes what is known as the Boundary Country, including Grand Forks, Greenwood, Midway, etc. J. D. Honsberger in charge.

District No. 8 includes the country south of Castlegar, Trail, Waneta, and Rossland. D. F. Jelly in charge.

ATTRACTIONS

The committee in charge of sports and amusements in connection with the Fair are in communication with special attractions of a novel and interesting nature and expect to secure a number of outdoor amusements that will be interesting and amusing to all. There will be Lacrosse Games, Baseball, Football, Basket Ball and Caledonian Sports, Balloon Ascensions, Charlot Races, Relay Races, Pony Races, Etc., which will be announced later on.

DOG SHOW

A Dog Show will be held in connection with the Exhibition. C. D. Jarvis, Chairman of Committee. Prizes will be awarded for:—

Bloodhounds	Irish Setters	Irish Terriers
Mastiffs	Gordon Setters	Fox Terriers
St. Bernards	Irish Water Spaniels	Skye Terriers
Great Dane	Field Spaniels	Black and Tan Terriers
Newfoundland	Cocker Spaniels	Pugs
Russian Wolfhound	Collies	Pommeranian or Spitz
Deerhounds	Bull Dogs	Yorkshire Terriers
Greyhounds	Bull Terriers	Toy Terriers
American Foxhounds	Dachshunde	Toy Spaniels
Pointers	Beagies	Japanese Spaniels
English Setters	Airedale Terriers	Miscellaneous
		(Breed must be stated)

GREENHOUSE PLANTS

	1st.	2nd.
Best Collection of Greenhouse Plants.....	\$10.00	\$5.00
Best Collection of Ferns	3.00	1.50
Best Collection of Cut Flowers	3.00	1.50
Best Collection of Roses	2.00	1.00

DONATIONS FOR 1905

(RECEIVED UP TO TIME OF GOING TO PRESS)

Christie Brown & Co., Toronto	\$10.00
United Factories	5.00
J. A. McDonald, wholesale Fruit Dealer, Nelson	10.00
Geo. Milligan, Toronto, per G. B. Mathews, Nelson — 500 Arabella Cigars — Value	35.00
Ogilvie Flour Mills Co.	15.00
Lake of the Woods Milling Co.	15.00
The Alexander Milling Co., Brandon	10.00
Calgary Milling Co.	10.00
Nelson Coke & Gas Co.	13.00
A. Burpee & Co., Philadelphia	Books
James Johnstone	Silver Cup

Hints to Fruit Growers.

Preparations for Planting.

Plow and subsoil, so as to thoroughly pulverize to a depth of 12 or 18 inches. Be sure the land is well drained, as no kind of fruit trees will thrive where the soil is saturated with stagnant water, except cranberries. New land requires no fertilizing, but old land should be so fertilized as to be in a condition to grow a good crop of corn or wheat. When planting upon the lawn or grass plots, remove the sod for a diameter of 4 or 5 feet, and keep this space well worked up and free from weeds. Dig the hole deeper and larger than is necessary to admit all the roots in their natural position, keeping the surface and subsoil separate. Cut off broken and bruised roots and shorten the tops to half a dozen good buds, except for Fall planting, when it is better to defer top pruning until the following Spring. If not prepared to plant when your stock arrives "heel in," in by digging a trench deep enough to admit all the roots and setting the trees therein as they can stand, carefully packing the earth about the roots, taking up when required. Never leave the roots exposed to the sun and air, and "puddle" before planting.

Planting.

Fill up the hole with surface soil, so that the tree will stand about as it did when in the nursery after the earth has settled, except Dwarf pears, which should be planted deep enough to cover the quince stock upon which they are budded, 2 or 3 inches. Work the soil thoroughly among the roots, and when well covered tramp firmly. Set the tree as firm as a post, but leave the surface filling (of poorer soil) light and loose. No staking will be required except with very tall trees. Never let manure come in contact with the roots.

Mulching.

A covering of coarse manure, straw, marsh hay or loose chip dirt, during the first season, will effectually prevent injury from drought, and is a benefit at all times.

How to Winter Trees Procured in the Fall.

The practice of procuring supplies of trees in the Fall is becoming more and more general as each season demonstrates its wisdom. To insure success you have only to get the trees before freezing weather, and bury them in the following manner: Choose a dry spot where no water will stand during the Winter, with no grass near to invite mice. Dig a trench, throwing out enough dirt to admit one layer of roots below the surface, and place the trees in it, inclined at an angle of 45 degrees or more. Widen the trench, throwing the soil among the roots in position; place another layer in the trench, reclining the tops on the others, and so on until all are in the trench; then finish by throwing up more soil until the tops of the trees are nearly or quite covered. It is also well to bank up the earth around the sides to insure more thorough protection. The exposed tops should then be covered with pine boughs, which insures them against any possibility of injury. Care should be taken to fill solid all the interstices among the roots. In the Spring the roots will be found to have formed the granulation necessary to the production of new spongioles, and when planted at the proper time will start to immediate growth.

Pruning.

Use the greatest care in digging and packing, but the loss of some small roots and fibres are unavoidable, and to preserve the natural balance between roots and tops a proper and judicious pruning is in most cases absolutely necessary. All broken or bruised roots should be cut off with a sharp knife, as a smooth cut heals much sooner than a bruise. The tops of Fruit Trees should be cut back to the extent of one half the growth of the previous season, taking care to prune in such a manner as to secure a head properly shaped and sufficiently open to the sun and air. Evergreens and other Ornamental Trees, the beauty of which depends on preserving their natural form, should be pruned but little. Hence great pains should be taken in planting and caring for them.

Plant Young Trees.

Select young trees, especially for orchard planting, instead of selecting the largest than can be had, to secure more immediate effect. They can be taken up with more perfect roots, and will become sooner established in a new location. They can also be more readily trained to any desired shape. The largest and most successful planters invariably select young, thrifty trees, as the surest in the end to give thorough satisfaction. For small grounds, or street planting, when it is necessary to make show as soon as possible, large trees are often desirable, and when handled with care should not fail to do well, but with the general planter, the average of loss will be much less, and both time and money will be saved if young trees are selected to commence with.

Distance for Planting.

Standard Apples	30 to 40 feet apart each way
Standard Pears and strong growing Cherries	20 feet apart each way
Duke and Morello Cherries	16 feet apart each way
Standard Plums, Apricots, Peaches, and Nectarines	14 to 16 feet apart each way
Dwarf Pears	10 to 12 feet apart each way
Grapes	rows 9 to 12 feet apart, 7 to 12 feet in rows
Currants and Gooseberries.....	4 to 5 feet apart each way
Raspberries and Blackberries	3 to 4 by 5 to 7 feet apart
Strawberries, for field culture	1 to 1½ by 3 to 4 feet apart
Strawberries, for garden culture	1 to 2 feet apart

Note—A most excellent way in planting an apple orchard 30 feet apart is to plant peaches or plums in between. By the time the apples require the ground the peaches will have passed their prime and can be removed.

Number of Trees to an Acre.

30 feet apart each way.....	48	10 feet apart each way.....	436
25 " "	70	8 " "	680
20 " "	110	6 " "	1210
18 " "	135	5 " "	1742
15 " "	205	4 " "	2723
12 " "	300	3 " "	5840

RULE—Multiply the distance in feet between the rows by the distance the plants are apart in the rows and the product will be the number of square feet for each plant or hill; which, divided into the number of feet in an acre (43,560) will give the number of trees to an acre.

**Remember that all Entries
close Saturday, Sep. 16th.**

**Address all Communications
to the Secretary,**

**J. E. ANNABLE,
Nelson, B.C.**

TRY IT AND

SEE



*Well Tailored Coat
Is one of the greatest
pleasures a man can
have. It FITS when
he gets it and Fits all the time
he wears it. Our Suits have an
easy set to them which insures
comfort and satisfaction.*

*Our choice stock of Imported
Woolens offer some beautiful
goods for your Choice.*

Taylor & McQuarrie

NELSON'S UP-TO-DATE TAILORS

MRS. REGINALD H. DILL
VALHALLA BX. 179
NELSON, B. C.



Mason & Risch PIANOS

*Thirty Years Before the
Public
Twelve Thousand in
Actual Use*

THEY are the product of money, brains and experience—substantial Pianos for people who buy but one instrument in a life time. They look well, sound well and wear well. Yet with all their goodness they are sold at a reasonable price, on easy terms. A card with your name and address will bring you our illustrated catalogue and an explanation of our easy time system of payments, of which you may avail yourself, no matter where you live.

Mason & Risch Piano Co.

Limited.

32 King Street West, Toronto, Ont.

Head Office for the Kootenays, Standard Furniture Co., Nelson, B. C.

