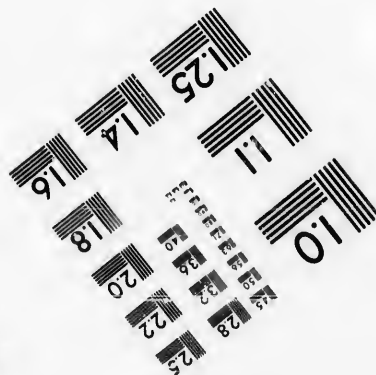
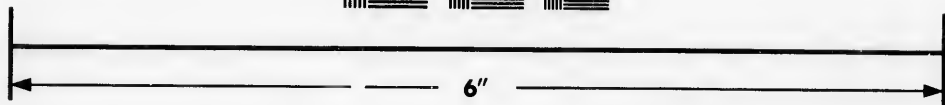
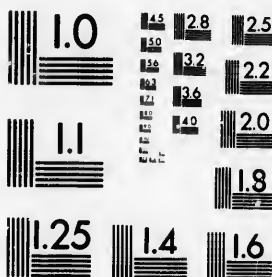


**IMAGE EVALUATION
TEST TARGET (MT-3)**



**Photographic
Sciences
Corporation**

23 WEST MAIN STREET
WEBSTER, N.Y. 14580
(716) 872-4503

**CIHM/ICMH
Microfiche
Series.**

**CIHM/ICMH
Collection de
microfiches.**



Canadian Institute for Historical Microreproductions / Institut canadien de microreproductions historiques

© 1986

Technical and Bibliographic Notes/Notes techniques et bibliographiques

The Institute has attempted to obtain the best original copy available for filming. Features of this copy which may be bibliographically unique, which may alter any of the images in the reproduction, or which may significantly change the usual method of filming, are checked below.

L'Institut a microfilmé le meilleur exemplaire qu'il lui a été possible de se procurer. Les détails de cet exemplaire qui sont peut-être uniques du point de vue bibliographique, qui peuvent modifier une image reproduite, ou qui peuvent exiger une modification dans la méthode normale de filmage sont indiqués ci-dessous.

- | | |
|--|--|
| <input type="checkbox"/> Coloured covers/
Couverture de couleur | <input type="checkbox"/> Coloured pages/
Pages de couleur |
| <input type="checkbox"/> Covers damaged/
Couverture endommagée | <input type="checkbox"/> Pages damaged/
Pages endommagées |
| <input type="checkbox"/> Covers restored end/or laminated/
Couverture restaurée et/ou pelliculée | <input type="checkbox"/> Pages restored end/or laminated/
Pages restaurées et/ou pelliculées |
| <input type="checkbox"/> Cover title missing/
Le titre de couverture manque | <input checked="" type="checkbox"/> Pages discoloured, stained or foxed/
Pages décolorées, tachetées ou piquées |
| <input type="checkbox"/> Coloured maps/
Cartes géographiques en couleur | <input type="checkbox"/> Pages detached/
Pages détachées |
| <input type="checkbox"/> Coloured ink (i.e. other than blue or black)/
Encre de couleur (i.e. autre que bleue ou noire) | <input type="checkbox"/> Showthrough/
Transparence |
| <input type="checkbox"/> Coloured plates and/or illustrations/
Planches et/ou illustrations en couleur | <input type="checkbox"/> Quality of print varies/
Qualité inégale de l'impression |
| <input type="checkbox"/> Bound with other material/
Relié avec d'autres documents | <input type="checkbox"/> Includes supplementary material/
Comprend du matériel supplémentaire |
| <input type="checkbox"/> Tight binding may cause shadows or distortion
along interior margin/
La reliure serrée peut causer de l'ombre ou de la
distorsion le long de la marge intérieure | <input type="checkbox"/> Only edition available/
Seule édition disponible |
| <input type="checkbox"/> Blank leaves added during restoration may
appear within the text. Whenever possible, these
have been omitted from filming/
Il se peut que certaines pages blanches ajoutées
lors d'une restauration apparaissent dans le texte,
mais, lorsque cela était possible, ces pages n'ont
pas été filmées. | <input type="checkbox"/> Pages wholly or partially obscured by errata
slips, tissues, etc., have been refilmed to
ensure the best possible image/
Les pages totalement ou partiellement
obscurcies par un feuillet d'errata, une pelure,
etc., ont été filmées à nouveau de façon à
obtenir la meilleure image possible. |
| <input checked="" type="checkbox"/> Additional comments: /
Commentaires supplémentaires: | [Printed ephemera] [4] p. |

This item is filmed at the reduction ratio checked below/
Ce document est filmé au taux de réduction indiqué ci-dessous.

10X	14X	18X	22X	26X	30X
<input type="checkbox"/>	<input type="checkbox"/>	<input checked="" type="checkbox"/>	<input type="checkbox"/>	<input type="checkbox"/>	<input type="checkbox"/>
12X	16X	20X	24X	28X	32X

The copy filmed here has been reproduced thanks to the generosity of:

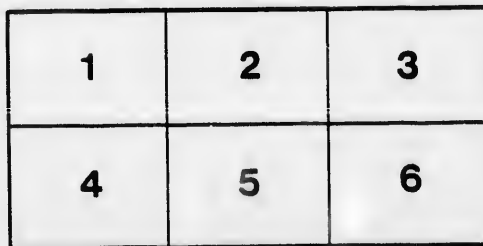
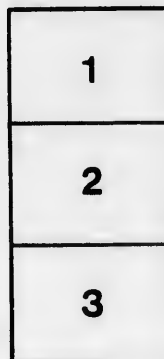
D. B. Weldon Library
University of Western Ontario
(Regional History Room)

The images appearing here are the best quality possible considering the condition and legibility of the original copy and in keeping with the filming contract specifications.

Original copies in printed paper covers are filmed beginning with the front cover and ending on the last page with a printed or illustrated impression, or the back cover when appropriate. All other original copies are filmed beginning on the first page with a printed or illustrated impression, and ending on the last page with a printed or illustrated impression.

The last recorded frame on each microfiche shall contain the symbol \longleftrightarrow (meaning "CONTINUED"), or the symbol ∇ (meaning "END"), whichever applies.

Maps, plates, charts, etc., may be filmed at different reduction ratios. Those too large to be entirely included in one exposure are filmed beginning in the upper left hand corner, left to right and top to bottom, as many frames as required. The following diagrams illustrate the method:



L'exemplaire filmé fut reproduit grâce à la générosité de:

D. B. Weldon Library
University of Western Ontario
(Regional History Room)

Les images suivantes ont été reproduites avec le plus grand soin, compte tenu de la condition et de la netteté de l'exemplaire filmé, et en conformité avec les conditions du contrat de filmage.

Les exemplaires originaux dont la couverture en papier est imprimée sont filmés en commençant par le premier plat et en terminant soit par la dernière page qui comporte une empreinte d'impression ou d'illustration, soit par le second plat, selon le cas. Tous les autres exemplaires originaux sont filmés en commençant par la première page qui comporte une empreinte d'impression ou d'illustration et en terminant par la dernière page qui comporte une telle empreinte.

Un des symboles suivants apparaîtra sur la dernière image de chaque microfiche, selon le cas: le symbole \longleftrightarrow signifie "A SUIVRE", le symbole ∇ signifie "FIN".

Les cartes, planches, tableaux, etc., peuvent être filmés à des taux de réduction différents. Lorsque le document est trop grand pour être reproduit en un seul cliché, il est filmé à partir de l'angle supérieur gauche, de gauche à droite, et de haut en bas, en prenant le nombre d'images nécessaire. Les diagrammes suivants illustrent la méthode.

ails
du
odifier
une
mage

rrata
to

pelure,
n à



32X

ATHLETIC SPORTS.



MONDAY, JUNE 28th, 1869,
AT TWO O'CLOCK.

STEWARDS, Blue.

W. BARWICK,
E. G. KITTSON,
A. C. GALT,
F. L. BOYD,

W. POSTON,
W. M. DESPARD,
W. J. GUNNING,
B. O'NEIL,

A. GRASSETT,
R. GAMBLE,
W. HODGINS,
E. J. PERKINS.

STARTER, — JOHN POPE, Esquire.

JUDGES.

F. WOLFERSTAN THOMAS, Esq. | VERSCHOYLE CRONYN, Esq.

LONDON, ONT. :

PRINTED AT THE FREE PRESS STEAM PRINTING ESTABLISHMENT, RICHMOND STREET.

1869.

Vaulting.

PRIZE—PHOTOGRAPHIC ALBUM, Presented by C. C. Chapman.

2 ENTRIES.

H. Spragge.	Blue & Orange. R. Gamble.	Purple.
-------------	-----------------------------	---------

Putting the Shell.

PRIZE—FLASK. 3 ENTRIES.

H. Spragge,	Blue & Orange. W. Barwick, B. O'Neil, Blue. Lt.	Red.
-------------	--	------

Three Legged Race, 200 Yards.

PRIZE—TWO FLASKS. 8 ENTRIES.

J. Young,	} Mauve and White.	J. Eyre,	} Red, Black and Yel.
G. Hellmuth,	} Lt. Blue and White.	C. Hespeler,	} Blue, Red and Yel.
A. Grasett,	} Purple and White.	L. Dampier,	} Blk, Pink and White.
E. J. Perkins,	} Lavender and White.	W. Crooks,	} Red, White and Blue.
G. Bourke,	} White.	F. Norris,	} Orange.
W. Raynes,	} Pink and White	H. Butler,	} Lavender and Brown.
R. Cooper,	} Violet and White.	W.M. Despard,	} Red and Blue.
I. Hellmuth,		C. Eyre,	} White and Yellow.

Long Jump.

PRIZE—INK STAND. 6 ENTRIES.

E. Kittson,	Green and Gold.	A. Grasett,	Purple and White.
R. Gamble,	Purple.	B. O'Neil,	Light Blue.
I. Hespeler,	Red and White.	W. Hodgins,	Ochre and Green.

Flat Race, 100 Yards, Boys Over 15.

PRIZE—RACKET. 9 ENTRIES.

A. Grasett,	Purple and White.	I. Hespeler,	Red and White.
E. Perkins,	Lavender and White.	R. Cooper,	Pink and White.
I. Hellmuth,	Violet and White.	W. Hodgins,	Ochre and Green.
A. Woolworth,	Puce.	G. Croghan,	Red and Gray.
A. Galt,	Magenta.		

Flat Race, 100 Yards, Boys Under 15.

PRIZE—TROUT ROD. 8 ENTRIES.

J. Young,	Mauve and White.	G. Hellmuth,	Lt. Blue and White.
W. Crooks,	Red, White and Blue.	R. Mackie,	Green and Yellow.
S. Simpson,	Blue and Pink.	E. Wood,	Maroon.
C. Hespeler,	Blue, Red and Yellow.	J. Eyre,	Red, Black and Yellow.

Flat Race, 100 Yards, Boys Under 12.

PRIZE—RIDING WHIP. 6 ENTRIES.

E. Wood, C. Simpson, E. Dampier,	Maroon. Green. Orange and White.	W. Hyman. G. Watson, J. Prince.
		Blue and Black. Pink and Green.

Hurdle Race, 150 Yards, 10 Flights, 3 Feet High.

PRIZE—WRITING DESK. 7 ENTRIES.

J. Bourke, E. Perkins, W. Barwick, A. Galt,	White. Lavender and White. Red. Magenta.	I. Hespeler, A. Grasett, B. O'Neil,
		Red and White. Purple and White. Light Blue.

High Jump, Boys Under 15.

PRIZE—PHOTOGRAPHIC ALBUM, Presented by E. A. Taylor.

6 ENTRIES.

W. Crooks, B. Bourke, J. Hyde,	Red, White and Blue. Black. Red and White.	F. Norris, H. Johnson, H. Butler,
		Orange. Red and Purple. Lavender and Brown.

High Jump With Pole.

PRIZE—TRAVELLING BAG. 6 ENTRIES.

W. Earwick, W. Crooks, G. Bourke,	Red. Red, White and Blue. White.	H. Spragge, R. Gamble, L. Butler,
		Blue and Orange. Purple. Gray.

Hurdle Race, 100 Yards, Boys Under 16.

PRIZE—CRICKET PADS. 9 ENTRIES.

R. Cooper, L. Butler, G. Croghan, M. Wood, I. Hellmuth,	Pink and White. Gray. Red and Gray. Green and Red. Violet and White.	G. Beddome, W. Hyde, R. Bourke, L. Dampier,
		Black and Green. Red and White. Black. Black, Pink and Wh.

Throwing the Cricket Ball.

PRIZE—CRICKET BALL. 5 ENTRIES.

W. Despard, W. Barwick, W. Poston,	Red and Blue. Red. Dark Blue and White.	R. Gamble, A. Galt,
		Purple. Magenta.

One Mile Race.

PRIZE—1st, DRESSING CASE; 2nd, BOXING GLOVES. 9 ENTRIES.

H. Spragge, S. Simpson, W. Barwick, R. Gamble, R. Cooper,	Blue and Orange. Blue and Pink. Red. Purple. Pink and White.	G. Croghan, H. Butler, O. Dobbs, W. Despard,
		Red and Gray. Lavender and Brown. Plaid. Blue and Red.

Half Mile Flat Race, Boys Under 15.

PRIZE—1st, CRICKET BAT; 2nd, PEN KNIFE. 15 ENTRIES.

W. Despard,	Purple and Scarlet.	W. Crooks,	Red, White and Blue.
J. Young,	Mauve and White.	R. Mackie,	Green and Yellow.
S. Simpson,	Blue and Pink.	E. Wood,	Maroon.
C. Hespeler,	Red, Blue and Yellow.	J. Dobbs,	Pink and Yellow.
R. Bourke,	Black.	W. Leckie,	Brown and Blue.
H. Johnson,	Red and Purple.	C. Meredith,	
H. Reid,	Blue, Dark.	G. Beddome,	Black and Green.
G. Hellmuth,	Light Blue and White.		

Quarter Mile Flat Race, Boys Under 12.

PRIZE—PORTEMONNAIE. 4 ENTRIES.

E. Wood,	Maroon.	E. Dampier,	White and Orange.
C. Simpson,	Green.	J. Watson,	Blue and Black.

Quarter Mile Stranger's Race.

PRIZE—MEERSCHAUM PIPE.

Sack Race, 50 Yards.

PRIZE—POWDER FLASK AND SHOT BELT. 27 ENTRIES.

A. Housman,	Magenta and White.	W. Leckie,	Brown and Blue.
J. Young,	Mauve and White.	G. Watson,	Blue and Black.
W. Wood,	Vermillion and White.	E. Dampier,	Orange and White.
E. Wood,	Maroon.	G. Hellmuth,	Light Blue and White.
G. Bourke,	White.	L. Norrie,	Pink.
S. Simpson,	Pink and Blue.	T. Peck,	Ochre and Blue.
H. Gamble,		S. Roosevelt,	Gold.
I. Hellmuth,	Violet and White.	W. Poston,	Dark Blue and White.
J. Eyre,	Red, Black and Yellow.	J. Dobbs,	Pink and Yellow.
L. Butler,	Gray.	W. Warwick,	Brick.
I. Hespeler,	Red and White.	F. Norris,	Orange.
R. Cooper,	Pink and White.	L. Dampier,	Black, Pink and White.
W. Hyman,	Green and White.	W. Hyde,	Red and White.
M. Wood,	Green and Red.		

Consolation Stakes, 300 Yards.

PRIZE—WRITING COMPANION.

Winners' Champion Race, Quarter Mile.

PRIZE—MEDAL.

Steeple Chase.

PRIZE—GAME BAG.

