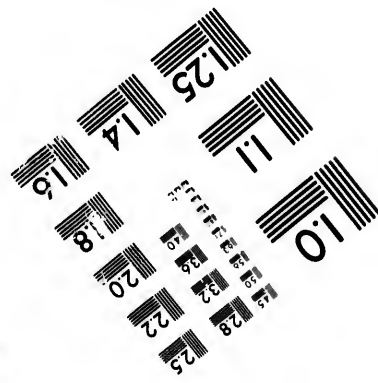
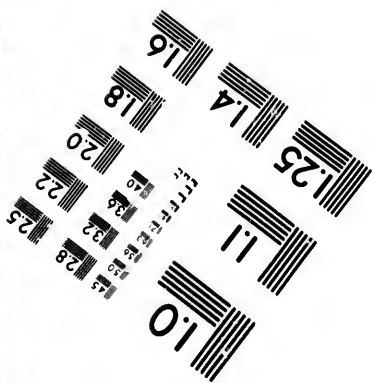
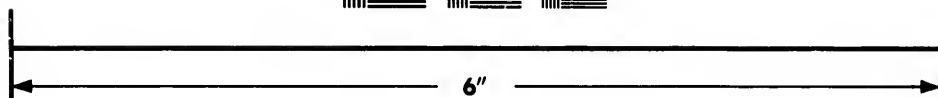
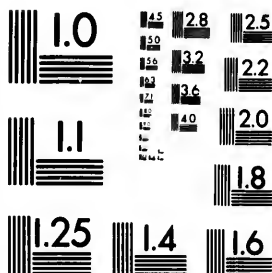
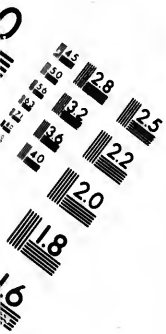


**IMAGE EVALUATION
TEST TARGET (MT-3)**



**Photographic
Sciences
Corporation**

23 WEST MAIN STREET
WEBSTER, N.Y. 14580
(716) 872-4503



**CIHM/ICMH
Microfiche
Series.**

**CIHM/ICMH
Collection de
microfiches.**



Canadian Institute for Historical Microreproductions / Institut canadien de microreproductions historiques



© 1987

Technical and Bibliographic Notes/Notes techniques et bibliographiques

The Institute has attempted to obtain the best original copy available for filming. Features of this copy which may be bibliographically unique, which may alter any of the images in the reproduction; or which may significantly change the usual method of filming, are checked below.

L'Institut a microfilmé le meilleur exemplaire qu'il lui a été possible de se procurer. Les détails de cet exemplaire qui sont peut-être uniques du point de vue bibliographique, qui peuvent modifier une image reproduite, ou qui peuvent exiger une modification dans la méthode normale de filmage sont indiqués ci-dessous.

- | | |
|--|--|
| <input type="checkbox"/> Coloured covers/
Couverture de couleur | <input type="checkbox"/> Coloured pages/
Pages de couleur |
| <input type="checkbox"/> Covers damaged/
Couverture endommagée | <input type="checkbox"/> Pages damaged/
Pages endommagées |
| <input type="checkbox"/> Covers restored and/or laminated/
Couverture restaurée et/ou pelliculée | <input type="checkbox"/> Pages restored and/or laminated/
Pages restaurées et/ou pelliculées |
| <input type="checkbox"/> Cover title missing/
Le titre de couverture manque | <input checked="" type="checkbox"/> Pages discoloured, stained or foxed/
Pages décolorées, tachetées ou piquées |
| <input type="checkbox"/> Coloured maps/
Cartes géographiques en couleur | <input type="checkbox"/> Pages detached/
Pages détachées |
| <input type="checkbox"/> Coloured ink (i.e. other than blue or black)/
Encre de couleur (i.e. autre que bleue ou noire) | <input checked="" type="checkbox"/> Showthrough/
Transparence |
| <input type="checkbox"/> Coloured plates and/or illustrations/
Planches et/ou illustrations en couleur | <input type="checkbox"/> Quality of print varies/
Qualité inégale de l'impression |
| <input type="checkbox"/> Bound with other material/
Relié avec d'autres documents | <input type="checkbox"/> Includes supplementary material/
Comprend du matériel supplémentaire |
| <input type="checkbox"/> Tight binding may cause shadows or distortion
along interior margin/
La reliure serrée peut causer de l'ombre ou de la
distorsion le long de la marge intérieure | <input type="checkbox"/> Only edition available/
Seule édition disponible |
| <input type="checkbox"/> Blank leaves added during restoration may
appear within the text. Whenever possible, these
have been omitted from filming/
Il se peut que certaines pages blanches ajoutées
lors d'une restauration apparaissent dans le texte,
mais, lorsque cela était possible, ces pages n'ont
pas été filmées. | <input type="checkbox"/> Pages wholly or partially obscured by errata
slips, tissues, etc., have been refilmed to
ensure the best possible image/
Les pages totalement ou partiellement
obscurcies par un feuillet d'errata, une pelure,
etc., ont été filmées à nouveau de façon à
obtenir la meilleure image possible. |
| <input checked="" type="checkbox"/> Additional comments:/ [Printed ephemera] [3] p.
Commentaires supplémentaires: | |

This item is filmed at the reduction ratio checked below/
Ce document est filmé au taux de réduction indiqué ci-dessous.

10X	14X	18X	22X	26X	30X
<input type="checkbox"/>	<input type="checkbox"/>	<input type="checkbox"/>	<input type="checkbox"/>	<input checked="" type="checkbox"/>	<input type="checkbox"/>
12X	16X	20X	24X	28X	32X

The copy filmed here has been reproduced thanks to the generosity of:

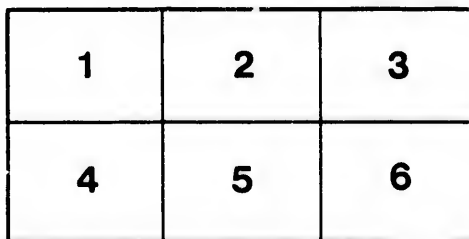
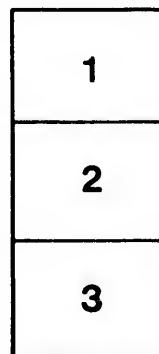
Seminary of Quebec
Library

The images appearing here are the best quality possible considering the condition and legibility of the original copy and in keeping with the filming contract specifications.

Original copies in printed paper covers are filmed beginning with the front cover and ending on the last page with a printed or illustrated impression, or the back cover when appropriate. All other original copies are filmed beginning on the first page with a printed or illustrated impression, and ending on the last page with a printed or illustrated impression.

The last recorded frame on each microfiche shall contain the symbol \rightarrow (meaning "CONTINUED"), or the symbol ∇ (meaning "END"), whichever applies.

Maps, plates, charts, etc., may be filmed at different reduction ratios. Those too large to be entirely included in one exposure are filmed beginning in the upper left hand corner, left to right and top to bottom, as many frames as required. The following diagrams illustrate the method:



L'exemplaire filmé fut reproduit grâce à la générosité de:

Séminaire de Québec
Bibliothèque

Les images suivantes ont été reproduites avec le plus grand soin, compte tenu de la condition et de la netteté de l'exemplaire filmé, et en conformité avec les conditions du contrat de filmage.

Les exemplaires originaux dont la couverture en papier est imprimée sont filmés en commençant par le premier plat et en terminant soit par la dernière page qui comporte une empreinte d'impression ou d'illustration, soit par le second plat, selon le cas. Tous les autres exemplaires originaux sont filmés en commençant par la première page qui comporte une empreinte d'impression ou d'illustration et en terminant par la dernière page qui comporte une telle empreinte.

Un des symboles suivants apparaîtra sur la dernière image de chaque microfiche, selon le cas: le symbole \rightarrow signifie "A SUIVRE", le symbole ∇ signifie "FIN".

Les cartes, planches, tableaux, etc., peuvent être filmés à des taux de réduction différents. Lorsque le document est trop grand pour être reproduit en un seul cliché, il est filmé à partir de l'angle supérieur gauche, de gauche à droite, et de haut en bas, en prenant le nombre d'images nécessaire. Les diagrammes suivants illustrent la méthode.

Dominion of Canada



Rifle Association

OTTAWA, JUNE 1, 1882.

SIR,

As Chairman of Council of the DOMINION OF CANADA RIFLE ASSOCIATION, I have much pleasure in acquainting you that the Annual Prize Meeting of the Association has been arranged to take place at Ottawa, commencing on Monday, the 4th September next.

It is anticipated that the meeting will be unusually interesting and important, the Programme of Prizes being framed with a view of inducing a large attendance of marksmen from all parts of the Dominion, the aggregate cash prizes amounting to \$4,862.00, exclusive of Prizes in kind, viz.:—London Merchant's Vase, Macdougall Cup, Gzowski Cup, Quebec *Morning Chronicle* Medal, N.R.A. Medal, D.R.A. Medal, one Rifle, one Organ and a Sewing Machine.

No. 1.	Manufacturers' Match No. 1	72	Prizes in Cash, \$430 00
2.	“ Match No. 2	69	“ “ 420 00
3.	Dominion of Canada Match, 5 Team Prizes, the Quebec <i>Morning Chronicle</i> medal, and	70	“ “ 769 00
4.	Macdougall Challenge Cup Match	58	“ “ 360 00
5.	Hon. Min. of Militia Match, 4 Team Prizes and	54	“ “ 380 00
6.	The Gzowski Military Match, 14 Team Prizes and Cup	14	“ “ 430 00
7.	The Bankers Prizes:		
	A. Nursery	62	“ “ 300 00
	B. Consolation	50	“ “ 264 00
	C. Grand Aggregate	50	“ “ 365 00
8.	The London Merchants' Cup Match, 2 Team Prizes and Vase	2	“ “ 144 00
9.	Prizes presented by His Excellency the Governor General and H.R.H. the Princess Louise	3	“ “ 500 00
10.	Long Range Match	21	“ “ 250 00
11.	The Hamilton Powder Co's. Matches, Series A.	24	“ “ 150 00
12.	“ “ “ Series B.	14	“ “ 100 00
13.	Abingdon Works Co. Match	1	Rifle.
	Extra Prizes given by Dominion Organ Co.	1	Organ.
	“ “ Lawlor Manufacturing Co	1	Sewing Machine.
	Individual Prizes	547	
	Team “	25	
	In Kind “	9	
	Total Prizes	<u>581</u>	In Cash, <u>\$4,862 00</u>

In order to carry out these objects, the Association relies to a large extent upon the Annual Contributions from Members, Special Donations, and Affiliated Rifle Associations. It is hoped, therefore, that a liberal support will be extended by all interested in Rifle Shooting, and that the list of Members, Donors and Affiliated Rifle Associations will be largely increased this year. The Affiliation fee for Provincial Rifle Associations has been reduced to \$25, and other Rifle Associations to \$12, each. See *Extract from New Constitution, annexed.*

Subscriptions and Affiliation Fees from Rifle Associations to be transmitted to the *Treasurer, Lieut.-Colonel Macpherson*, at Ottawa, as per Schedule hereto attached.

I have the honor to be,

Sir

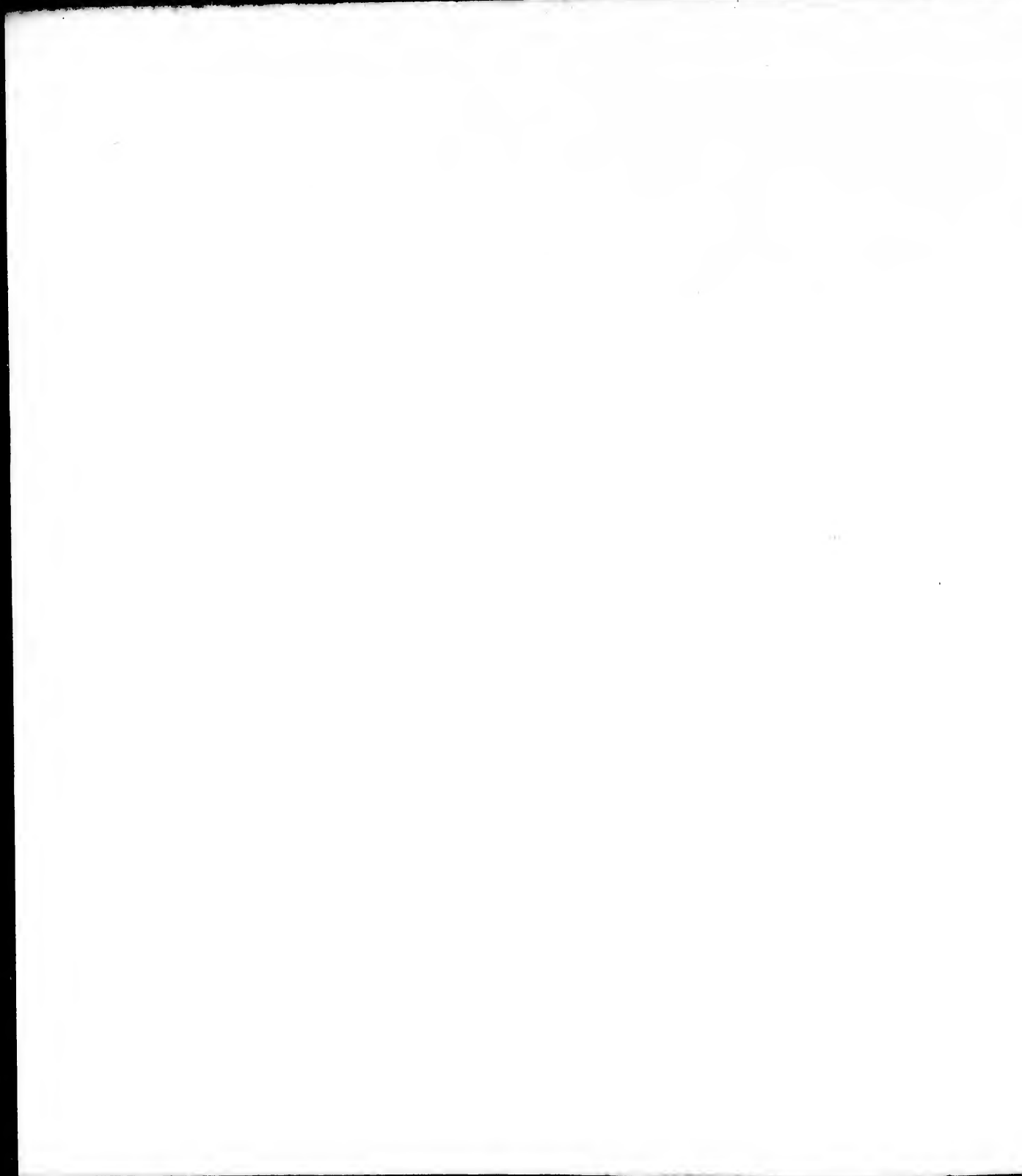
Your most obedient Servant,

To

G. A. KIRKPATRICK,

Lieutenant-Colonel.

Chairman of Council, D.C.R.A.



CIRCULAR MEMORANDUM.

DOMINION OF CANADA RIFLE ASSOCIATION.

EXTRACT FROM THE NEW CONSTITUTION

ADOPTED AT ANNUAL GENERAL MEETING, 1882.

2. Any person being a subscriber of \$2.00, and paying the same before the 1st day of September, or the second day of the Annual Prize Meeting, shall become a member of the Association for the current Association year; and any member may continue his membership by the annual payment of \$2.00.

Any person may become an Associate Member of the Association for the current year upon the payment of the sum of \$1.00, and shall have the privilege of taking part in the annual matches, but shall not be entitled to vote at any meeting of the Association.

4. Any Provincial Rifle Association of the Dominion subscribing not less than \$25.00 annually, and any other Rifle Association of the Dominion subscribing not less than \$12.00 annually, to the funds of the Dominion Rifle Association, shall be considered as being in connection with it. Each Affiliating Association shall be entitled to receive a Silver Medal for competition by its *bona fide* members. The winner of such medal, being an efficient member of the Active Militia, or an Officer retired retaining rank, to be entitled to compete free of entrance fee in the "Dominion of Canada" and "Affiliated Association" matches at the First Prize Meeting of the Dominion of Canada Rifle Association at which he is present after he wins the medal; provided always that the name of the winner and details of the match at which it is won shall be communicated to the Secretary of the D. C. Rifle Association not later than the first day of such Prize Meeting.

The undersigned desires to subscribe to the Dominion of Canada Rifle Association the amount specified below:

Member's Signature, or Name of Affiliating Rifle Association.	ADDRESS.	Subscription per Annum or Life Payment.		Affiliation Fee per Annum.		Donations (Voluntary.)	
		\$	c.	\$	c.	\$	c.

The Council desire to draw special attention to the change in the Constitution of the Dominion of Canada Rifle Association, as embraced in the above printed extract, and to request that the names of gentlemen desirous of becoming Members by Annual Subscription or Life Payment, or Affiliating Rifle Associations, may be inserted in the above form, and returned to the *Treasurer* with as little delay as possible.

The amounts may be remitted by registered letter, post-office order, or cheque, payable to the *Treasurer*, Lt. COL. MACPHERSON, Ottawa, Ont.

C. S. GZOWSKI, COLONEL, A.D.C. TO THE QUEEN.

President Dominion of Canada Rifle Association.

OTTAWA, June, 1882.

