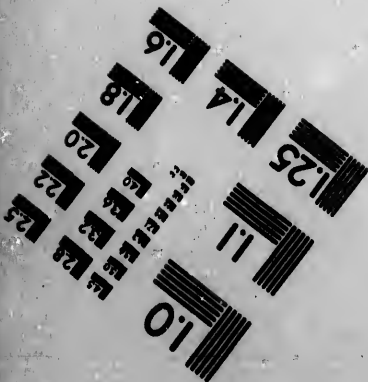
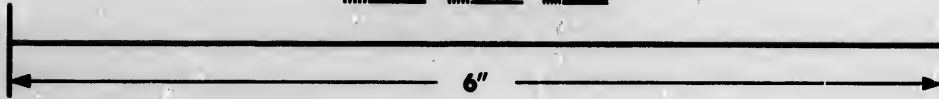
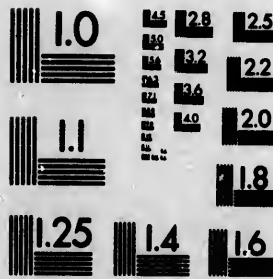


**IMAGE EVALUATION
TEST TARGET (MT-3)**



**Photographic
Sciences
Corporation**

23 WEST MAIN STREET
WEBSTER, N.Y. 14580
(716) 872-4503

128
132
136
140
144
148

**CIHM/ICMH
Microfiche
Series.**

**CIHM/ICMH
Collection de
microfiches.**



Canadian Institute for Historical Microreproductions / Institut canadien de microreproductions historiques

10
01

© 1987

Technical and Bibliographic Notes/Notes techniques et bibliographiques

The Institute has attempted to obtain the best original copy available for filming. Features of this copy which may be bibliographically unique, which may alter any of the images in the reproduction, or which may significantly change the usual method of filming, are checked below.

L'Institut a microfilmé le meilleur exemplaire qu'il lui a été possible de se procurer. Les détails de cet exemplaire qui sont peut-être uniques du point de vue bibliographique, qui peuvent modifier une image reproduite, ou qui peuvent exiger une modification dans la méthode normale de filmage sont indiqués ci-dessous.

- | | |
|--|--|
| <input type="checkbox"/> Coloured covers/
Couverture de couleur | <input type="checkbox"/> Coloured pages/
Pages de couleur |
| <input type="checkbox"/> Covers damaged/
Couverture endommagée | <input type="checkbox"/> Pages damaged/
Pages endommagées |
| <input type="checkbox"/> Covers restored and/or laminated/
Couverture restaurée et/ou pelliculée | <input type="checkbox"/> Pages restored and/or laminated/
Pages restaurées et/ou pelliculées |
| <input type="checkbox"/> Cover title missing/
Le titre de couverture manque | <input type="checkbox"/> Pages discoloured, stained or foxed/
Pages décolorées, tachetées ou piquées |
| <input type="checkbox"/> Coloured maps/
Cartes géographiques en couleur | <input type="checkbox"/> Pages detached/
Pages détachées |
| <input type="checkbox"/> Coloured ink (i.e. other than blue or black)/
Encre de couleur (i.e. autre que bleue ou noire) | <input type="checkbox"/> Showthrough/
Transparence |
| <input type="checkbox"/> Coloured plates and/or illustrations/
Planches et/ou illustrations en couleur | <input type="checkbox"/> Quality of print varies/
Qualité inégale de l'impression |
| <input type="checkbox"/> Bound with other material/
Relié avec d'autres documents | <input type="checkbox"/> Includes supplementary material/
Comprend du matériel supplémentaire |
| <input type="checkbox"/> Tight binding may cause shadows or distortion
along interior margin/
La reliure serrée peut causer de l'ombre ou de la
distorsion le long de la marge intérieure | <input type="checkbox"/> Only edition available/
Seule édition disponible |
| <input type="checkbox"/> Blank leaves added during restoration may
appear within the text. Wherever possible, these
have been omitted from filming/
Il se peut que certaines pages blanches ajoutées
lors d'une restauration apparaissent dans le texte,
mais, lorsque cela était possible, ces pages n'ont
pas été filmées. | <input type="checkbox"/> Pages wholly or partially obscured by errata
slips, tissues, etc., have been refilmed to
ensure the best possible image/
Les pages totalement ou partiellement
obscurcies par un feuillet d'errata, une pelure,
etc., ont été filmées à nouveau de façon à
obtenir la meilleure image possible. |
| <input type="checkbox"/> Additional comments:/
Commentaires supplémentaires: | |

[Printed Ephemera] 1 sheet (verso blank)

This item is filmed at the reduction ratio checked below/
Ce document est filmé au taux de réduction indiqué ci-dessous.

10X	14X	18X	22X	26X	30X
<input type="checkbox"/>	<input type="checkbox"/>	<input type="checkbox"/>	<input type="checkbox"/>	<input checked="" type="checkbox"/>	<input type="checkbox"/>
12X	16X	20X	24X	28X	32X

The copy filmed here has been reproduced thanks to the generosity of:

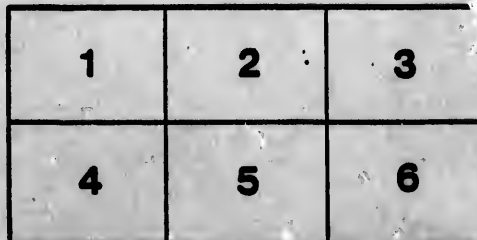
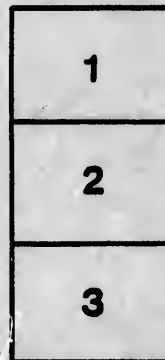
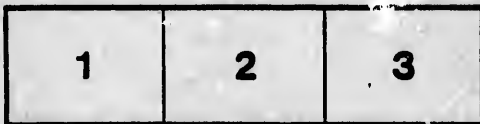
Archives of Ontario
Toronto

The images appearing here are the best quality possible considering the condition and legibility of the original copy and in keeping with the filming contract specifications.

Original copies in printed paper covers are filmed beginning with the front cover and ending on the last page with a printed or illustrated impression, or the back cover when appropriate. All other original copies are filmed beginning on the first page with a printed or illustrated impression, and ending on the last page with a printed or illustrated impression.

The last recorded frame on each microfiche shall contain the symbol \rightarrow (meaning "CONTINUED"), or the symbol ∇ (meaning "END"), whichever applies.

Maps, plates, charts, etc., may be filmed at different reduction ratios. Those too large to be entirely included in one exposure are filmed beginning in the upper left hand corner, left to right and top to bottom, as many frames as required. The following diagrams illustrate the method:



L'exemplaire filmé fut reproduit grâce à la générosité de:

Archives of Ontario
Toronto

Les images suivantes ont été reproduites avec le plus grand soin, compte tenu de la condition et de la netteté de l'exemplaire filmé, et en conformité avec les conditions du contrat de filmage.

Les exemplaires originaux dont la couverture en papier est imprimée sont filmés en commençant par le premier plat et en terminant soit par la dernière page qui comporte une empreinte d'impression ou d'illustration, soit par le second plat, selon le cas. Tous les autres exemplaires originaux sont filmés en commençant par la première page qui comporte une empreinte d'impression ou d'illustration et en terminant par la dernière page qui comporte une telle empreinte.

Un des symboles suivants apparaîtra sur la dernière image de chaque microfiche, selon le cas: le symbole \rightarrow signifie "A SUIVRE", le symbole ∇ signifie "FIN".

Les cartes, planches, tableaux, etc., peuvent être filmés à des taux de réduction différents. Lorsque le document est trop grand pour être reproduit en un seul cliché, il est filmé à partir de l'angle supérieur gauche, de gauche à droite, et de haut en bas, en prenant le nombre d'images nécessaire. Les diagrammes suivants illustrent la méthode.

ails
du
odifier
une
mage

rata
o
elure.
à

32X

ONTARIO VETERINARY COLLEGE,

In connection with the Council of the Agricultural and Arts Association of Ontario.

Patrons:

The Right Hon. Sir JOHN YOUNG, Bart., P.C., G.C.B., G.C.M.G., Governor General of Canada.
The Hon. WILLIAM P. HOWLAND, C.B., Lieutenant Governor of Ontario.
The Hon. JOHN CARLING, Commissioner of Agriculture and Arts for Ontario.

Professors:

ANDREW SMITH, V. S., Edin., Principal, - - - *Anatomy and Diseases of Farm Animals.*
J. THORBURN, M. D., Edin., - - - - - *Veterinary Materia Medica.*
JAMES BOVELL, M. D., Eng., - - - - - *Animal Physiology.*
A. SMITH, V. S., and Assistant, - - - - - *Clinical Instruction.*
H. H. CROFT, D. C. L., University College, - - - - - *Chemistry.*
GEO. BUCKLAND, " " *The History, Breeding, and Management of the Domesticated Animals.*

Students intending to prepare themselves for the practice of the Veterinary Art, as a *Profession*, are required to attend two sessions, *at least*, and pass the examinations. The *DIPLOMA* will be granted on passing the final examination, certifying that the holder thereof is competent to practice his profession.

Students are strictly required to devote the interval between the sessions to the practice of the profession, under some approved and duly qualified practitioner.

In addition to the above, provision is made to meet the wants of young men intended for, or already engaged in Canadian farming, by a course of familiar instruction in the science and practice of Agriculture. In this department Professor Buckland is assisted by several of his colleagues,—the Professors of Chemistry, Geology, Natural History, and Meteorology, in University College. This course is *free only to strictly Agricultural Students*, and will continue about six weeks.

The session for second and third years' students commenced in October. The class for first year's *Veterinary Students* and *Agricultural Students* will commence January 5th, 1870. The session for *Veterinary Students* will close on the 1st of April.

Students attending two sessions of this Institution, can obtain the Diploma of the Royal College of Veterinary Surgeons, or that of Edinburgh, after attending one session and passing the examination at either of the Colleges of London or Edinburgh.

A new and commodious building has just been erected, contiguous to the Infirmary, offering students every facility for the practice of dissection, observing the treatment of disease, and the performance of surgical operations; thereby affording them ample opportunities of becoming thoroughly acquainted with the theory and practice of the profession.

For fees and other particulars relative to the Veterinary Department, apply to Mr. Smith, Veterinary Surgeon, Temperance Street, Toronto.

Particulars relating to the Agricultural Class may be obtained by addressing Professor Buckland, University College.

H. C. THOMSON,
Secretary of Agricultural and Arts Association.

OFFICE OF AGRICULTURAL ASSOCIATION, }
Toronto, December, 1869. }

