

Technical and Bibliographic Notes / Notes techniques et bibliographiques

The Institute has attempted to obtain the best original copy available for filming. Features of this copy which may be bibliographically unique, which may alter any of the images in the reproduction, or which may significantly change the usual method of filming, are checked below.

- Coloured covers/
Couverture de couleur
- Covers damaged/
Couverture endommagée
- Covers restored and/or laminated/
Couverture restaurée et/ou pelliculée
- Cover title missing/
Le titre de couverture manque
- Coloured maps/
Cartes géographiques en couleur
- Coloured ink (i.e. other than blue or black)/
Encre de couleur (i.e. autre que bleue ou noire)
- Coloured plates and/or illustrations/
Planches et/ou illustrations en couleur
- Bound with other material/
Relié avec d'autres documents
- Tight binding may cause shadows or distortion along interior margin/
La reliure serrée peut causer de l'ombre ou de la distorsion le long de la marge intérieure
- Blank leaves added during restoration may appear within the text. Whenever possible, these have been omitted from filming/
Il se peut que certaines pages blanches ajoutées lors d'une restauration apparaissent dans le texte, mais, lorsque cela était possible, ces pages n'ont pas été filmées.

- Additional comments: /
Commentaires supplémentaires: Some pages are cut off.

This item is filmed at the reduction ratio checked below /
Ce document est filmé au taux de réduction indiqué ci-dessous.

10X	12X	14X	16X	18X	20X	22X	24X	26X	28X	30X	32X
					✓						

L'Institut a microfilmé le meilleur exemplaire qu'il lui a été possible de se procurer. Les détails de cet exemplaire qui sont peut être uniques du point de vue bibliographique, qui peuvent modifier une image reproduite, ou qui peuvent exiger une modification dans la méthode normale de filmage sont indiqués ci-dessous.

- Coloured pages/
Pages de couleur
- Pages damaged/
Pages endommagées
- Pages restored and/or laminated/
Pages restaurées et/ou pelliculées
- Pages discoloured, stained or foxed/
Pages décolorées, tachetées ou piquées.
- Pages detached/
Pages détachées
- Showthrough/
Transparence
- Quality of print varies/
Qualité inégale de l'impression
- Continuous pagination/
Pagination continue
- Includes index(es)/
Comprend un (des) index
- Title on header taken from /
Le titre de l'en tête provient:
- Title page of issue/
Page de titre de la livraison
- Caption of issue/
Titre de départ de la livraison
- Masthead/
Générique (périodiques) de la livraison

THE CANADIAN MUTE.

Published to teach Printing to some Pupils of the Institution for the Deaf and Dumb, Belleville.

VOL. VI.

BELLEVILLE, AUGUST 31, 1897.

NO. 4.

INSTITUTION FOR THE DEAF & DUMB

BELLEVILLE, ONTARIO,
CANADA.



Minister of the Government in Charge :

THE HON. R. J. DAVIS, TORONTO.

Government Inspector :

DR. T. F. CHAMBERLAIN, TORONTO.

Officers of the Institution :

R. MATHISON, M. A.	Superintendent
A. MATHISON	Warden
J. E. BAKINS, M. D.	Physician
MISS ISABEL WALNOR	Nutrition

Teachers :

D. R. COLEMAN, M. A.	Miss J. G. TERRILL
(Head Teacher)	Miss H. TEMPLTON
P. DENYER	Miss M. M. OXFORD
JAMES G. BALIN, B.A.	Miss MARY BULL
D. J. MCILLOP	Miss FLORENCE STAYNER
W. J. CAMPBELL	Miss SYLVIA L. BALIN
GEO. F. STEWART	Miss ADA JAMES
	Miss GEORGINA LANN

Miss CAROLINE GIBSON, Teacher of Articulation.

Miss MARY BULL, Teacher of Fancy Work.

Miss J. F. WILLS, Teacher of Drawing

Miss E. N. METCALFE, JOHN T. BURNS,
Clerk and Typewriter, Instructor of Printing

WM DOUGLASS, WM NURSE,
Storekeeper & Associate, Master Shoemaker,
Superior.

G. G. KRITH, J. MIDDLEMASS,
Superior of Boys, etc., Engineer

Miss M. DENNEY, JOHN DOWNIE,
Broom-maker, Superior of Girls, etc., Master Carpenter

Miss E. A. HALE, D. CUNNINGHAM,
Trained Hospital Nurse, Master Baker.

JOHN MOORE,
Farmer and Gardener.

The object of the Province in founding and maintaining this Institute is to afford educational advantages to all the youth of the Province who are, on account of deafness, either partial or total, unable to receive instruction in the common schools.

All deaf mutes between the ages of seven and twenty, not being deficient in intellect, and free from contagious diseases, who are bona fide residents of the Province of Ontario, will be admitted as pupils. The regular term of instruction is seven years, with a vacation of nearly three months during the summer of each year.

Parents, guardians or friends who are able to pay, will be charged the sum of \$50 per year for board, tuition, books and medical attendance will be furnished free.

Deaf mutes whose parents, guardians or friends are unable to pay the amount charged for board will be admitted free. Clothing must be furnished by parents or friends.

At the present time the trades of Printing, Carpentry and Shoemaking are taught to boys; the female pupils are instructed in general domestic work, tailoring, dressmaking, sewing, knitting, the use of the sewing machine, and all ornamental and fancy work as may be desirable.

It is hoped that all having charge of deaf mute children will avail themselves of the liberal terms offered by the Government for their education and improvement.

The regular Annual School Term begins on the second Wednesday in September, and closes on the third Wednesday in June of each year. Any information as to the terms of admission for pupils will be given upon application to me by letter, or otherwise.

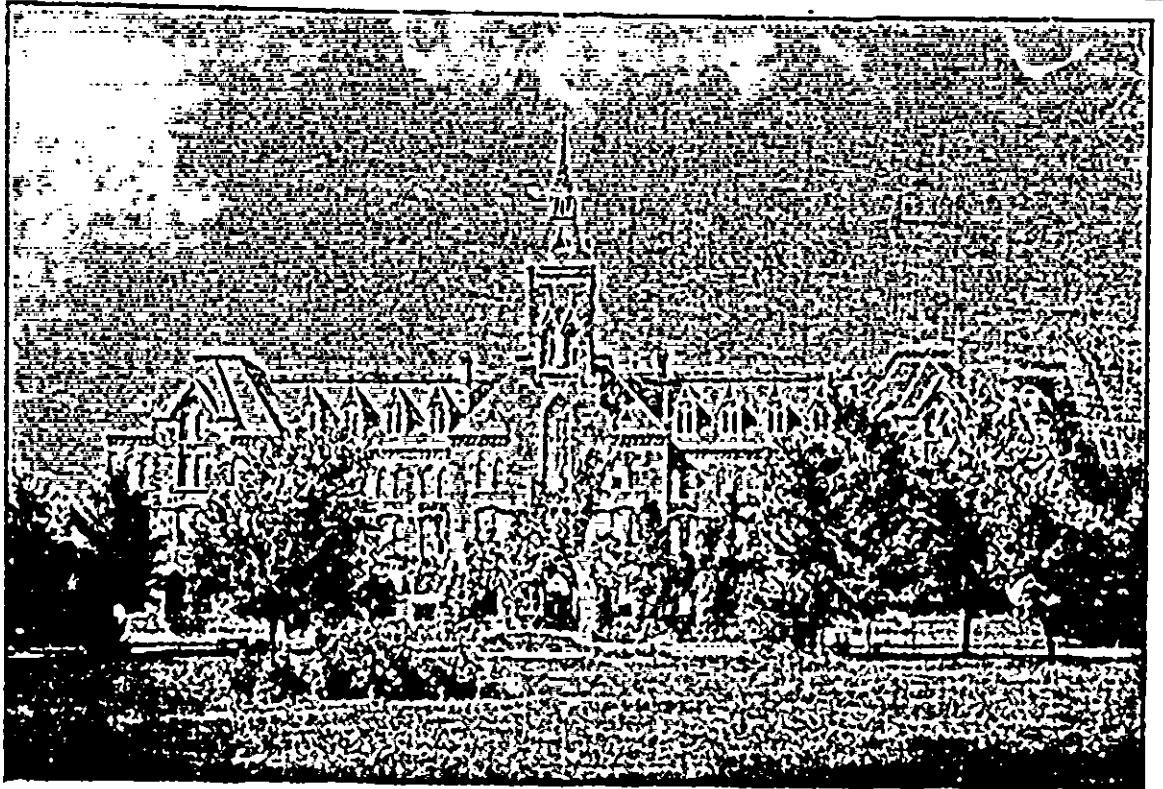
R. MATHISON,

Superintendent

BELLEVILLE, ONT.

INSTITUTION POSTAL ARRANGEMENTS

LETTERS AND PAPERS RECEIVED AND distributed without delay to the parties to whom they are addressed. Mail matter to go away if put in box in office door will be sent to city post office at noon and 2.45 p.m. of each day (Sundays excepted). The messenger is not allowed to post letters or parcels, or receive mail matter at post office for delivery, for any one, unless the same is in the locked bag.




Ontario Institution for the Deaf and Dumb Re-opening, September 15th, 1897.

To Parents and Friends:—

BELLEVILLE, ONT., AUGUST 25th, 1897.

The Institution for the Deaf and Dumb, at Belleville, will re-open ON WEDNESDAY, SEPT. 15th, and parents and friends are requested to be governed accordingly. The running of trains on the Grand Trunk Railway are now very much more convenient than formerly for the pupils and their friends coming to the Institution on the day of opening. Heretofore, pupils from western points were unable, although leaving home early in the morning, to reach the Institution at Belleville until midnight or after that unseemly hour. Present arrangements are such that all the pupils on the line of the Grand Trunk, east and west, if sent on as per memorandum of trains herewith, may be in Belleville before six o'clock in the afternoon.

 Pupils coming to Toronto by the Railway Lines will be met on their arrival at the Union Station. It is desired that all will bring or send their children by the early morning trains—to go on to Belleville by the two (2.00) o'clock afternoon train on the Grand Trunk Railway. All Toronto pupils must come by this train. We want the pupils to reach the Institution in daylight, so as to avoid travelling at night. This is important. See that the child's ticket and check for baggage are all right, so that there may be no trouble on the trains.

Parents will please see that trunks or boxes are properly addressed, with the name of child on each piece, and checked to Belleville. Trunks ought to be of good material and strong, to stand handling on cars.

Pupils placed in care of Conductors at any point are always well looked after and forwarded to the Institution.

I trust that pupils who have been here before, and intending pupils will be on hand promptly at the beginning of the session. Children will not be received at the Institution before the day of opening. The classes are formed as soon as possible after the opening, and the late comers cannot be allowed to retard the progress of those who are present when the classification is made.

Parents coming to Belleville with children, at the re-opening, or for the purpose of visiting the Institution at any time, will save money by purchasing a return ticket for themselves at the railway station nearest their homes.

The clothing sent with pupils should be marked with the owner's name, with indelible ink, and packed in a strong trunk or box, with a list of articles enclosed.

Parents of new pupils are requested to accompany their children to the Institution, if they can spare time and means, so that they may see where the little ones are placed and form an idea how they are likely to be cared for.

Parents of all pupils, or any person requiring information concerning deaf children, are desired to communicate with me as often as they may be so inclined. Every letter is promptly replied to, and it is a pleasure to inform parents of the progress of their children.

I will be at the Grand Trunk Lower Waiting Room in the Union Station, Toronto, on the day named (Sept. 15th) from 10 a. m. until the departure of the train for Belleville, at 2.00 o'clock in the afternoon, to meet the parents from the west, who wish to consult me about their children. I will see parents living east of Belleville, at the Institution the next day.

Yours faithfully,

R. Mathison

Superintendent.



THE CANADIAN MUTE.

Four, six or eight pages,
PUBLISHED SEMI-MONTHLY

At the Institution for the Deaf and Dumb,
BELLEVILLE, ONT.

OUR MISSION:

- First.**—That a number of our pupils may learn type-setting, and from the knowledge obtained be able to earn a livelihood after they leave school.
- Second.**—To furnish interesting matter for and encourage a habit of reading among our pupils and deaf-mute subscribers.
- Third.**—To be a medium of communication between the school and parents, and friends of pupils, now in the Institution, the hundreds who were pupils at one time or other in the past, and all who are interested in the education and instruction of the deaf of our land.

SUBSCRIPTION:

Fifty (50) cents for the school year, payable in advance. New subscriptions commence at any time during the year. Remit by money order, postage stamps, or registered letter.

Subscribers failing to receive their papers regularly will please notify us, that mistakes may be corrected without delay. All papers are stopped when the subscription expires, unless otherwise ordered. The date on each subscriber's wrapper is the time when the subscription runs out.

Correspondence on matters of interest to the deaf is requested from our friends in all parts of the Province. Nothing calculated to wound the feelings of any one will be admitted—if we know it.

ADVERTISING:

A very limited amount of advertising, subject to approval, will be inserted at 25 cents a line for each insertion.

Address all communications and subscriptions to
THE CANADIAN MUTE,
BELLEVILLE,
ONTARIO.



TUESDAY, AUGUST 31, 1897.

The next issue of THE CANADIAN MUTE will be on Friday, the 1st of October.

Good Suggestion.

It would be well for many of the people who are given to worrying to pay heed to a story of Cromwell's time, said to be absolutely true.

The Protector was sending a special envoy to Sweden in the person of Bushrod Whitelock, a most devout man, but one of an extremely nervous, anxious temperament. As the ambassador was about to embark on his journey, he was detained at Harwick by a storm. He was so troubled with the affairs of the nation that he tossed, turned and groaned in his bed, unable to get to sleep.

At last his confidential servant, who had won Whitelock's respect and confidence through his faithfulness and good sense on many a trying occasion, ventured to say, "Pray, sir, will you give me leave to ask you a question?"

"Certainly," was the answer.

"Do you not think that God governed the world very well before you came into it?"

"Undoubtedly I do," said Whitelock.

"And," continued the servant, "do you not think He will govern it quite as well when you are gone out of it?"

"To be sure He will," responded the master, promptly.

"Then, sir, excuse me, but may you not trust Him to govern it the little while you are to live in it?"

Whitelock made no reply to this pertinent question, but he turned over and was soon asleep; and on his return he repeated the story of this bit of advice with much appreciation.

God puts our prayers, like rose leaves, between the pages of his book of remembrance, and when the volume is opened at last, there shall be a precious fragrance springing up therefrom.—*Spiritual.*

Thou wilt always rejoice in the evening if thou hast spent the day profitably.—*Thomas a Kempis.*

Ontario Institution for the Deaf and Dumb Belleville, Ont.

1897.



1897.

RE-OPENING, * SEPTEMBER * 15, * 1897.

The following memorandum in reference to the running of trains en route to Belleville, will be a guide for the parents of pupils. The Railway Time Table shows the time the trains arrive at intermediate stations. If any changes occur you must be governed accordingly:—

GRAND TRUNK RAILWAY.

An Officer of the Institution will have a special car on the train leaving Windsor at 6.30 a. m.; Chatham, 7.52 a. m.; Thamesville, 8.17 a. m.; Bothwell, 8.30 a. m.; Nowbury, 8.39 a. m.; Henoco, 8.50 a. m.; London, 10.05 a. m.; Ingersoll, 10.37 a. m.; Woodstock, 10.52 a. m.; Paris, 11.18 a. m. Dundas pupils, if they are put on 11.39 a. m. train, will arrive and be met in Hamilton in time to take the 12.10 (noon) train for Toronto.

Pupils from Petrolia will take the 5.15 a. m. train; Watford, 6.32 a. m.; Kerwood, 6.48 a. m.; Strathroy, 7.02 a. m. so as to connect with train leaving London at 10.05 a. m.

Pupils from St. Thomas will leave there at 7.05 a. m.; Aylmer, 7.31 a. m.; Tilsonburg Junction, 8.00 a. m.; Delhi, 8.28 a. m.; Simcoo, 8.50 a. m.; Jarvis, 9.10 a. m.; Caledonia, 9.45 a. m.; Glanford, 10.12 a. m.; arriving at Hamilton (Stuart St. Station) at 10.50 a. m. and wait there for the 12.10 (noon) train for Toronto. From Dunnville at 9.07 a. m., to connect at Caledonia at 9.15 a. m. for Hamilton.

Pupils from Niagara Falls, Welland, St. Catharines and Grimsby are to take the early morning train so as to reach Hamilton or Toronto in the forenoon.

Pupils between Hamilton and Toronto will take the 9.20 a. m. train leaving Hamilton.

An Officer of the Institution will have a special car on the train leaving Paris (Tunnel Station) at 6.00 a. m.; Forest, 6.43 a. m.; Park Hill, 7.13 a. m.; Alisa Craig, 7.20 a. m.; St. Mary's, 8.15 a. m.; Stratford, 8.40 a. m.; Shakespeare, 9.00 a. m.; Hamburg, 9.12 a. m.; Bala, 9.17 a. m.; Petersburg, 9.23 a. m.; Berlin, 9.39 a. m.; Guelph Junction, 10.05 a. m.; Guelph City, 10.20 a. m.; Rockwood, 10.35 a. m.; Acton West, 10.47 a. m.; Malton, 11.27 a. m.; Weston, 11.41 a. m.; Carleton, 11.48 a. m.; arriving in Toronto at 12.10 (noon).

A train leaves Goderich at 7.15 a. m., arriving at Stratford at 8.10 a. m. Pupils from Goderich, Clinton, Henall, Dublin, Mitchell and other points will come by this train, where connection will be made with train for Toronto.

Pupils from Mildmay, Gowanstown, Listowel, Ethel Lucknow, Chesley, Dobbington and Warton will take the early morning train so as to reach Palmerston at 8.15 a. m., getting to Guelph Junction at 10.10 a. m., in time to connect with the train on the main line for Toronto.

Pupils from Creemore, Craigleith, Collingwood, Meaford, Wyevale, Allandale, Newmarket and Barrie will take the early morning train so as to reach Toronto at 10.05 a. m.

Pupils from Orillia and stations in the Muskoka District will arrange to take the 7.50 a. m. train from Orillia to Blackwater Junction, thence on arriving at Port Hope at 1.00 p. m., to make connection with the train from Toronto arriving there at 1.03 p. m. Pupils from Peterboro, Lindsay, Kilmount, Irondale Junction, Haliburton, Fenelon Falls, Cobocook, Brechin and other points in this district will be expected on this train when it arrives at Port Hope.

Pupils from the east will come on trains as follows:—Lancaster, 9.15 a. m.; Cornwall, 9.15 a. m.; Morrisburg, 10.32 a. m.; Prescott, 10.09 a. m.; Brockville, 11.30 a. m.; Mallorytown, 11.58 a. m.; Kingston Junction, 12.50 p. m.; Ernestown, 1.45 p. m.; Napanee, 2.05 p. m., arriving in Belleville at 2.44 p. m.

CENTRAL ONTARIO RAILWAY.

Pupils from Rathlum, Coe Hill and other points on this line will come as heretofore, taking the first early morning train for Trenton making connection for Belleville.

CANADIAN PACIFIC RAILWAY.

Pupils from Ayr, Guelph Junction, Bolton, Cardwell Junction, Orangeville, Grand Valley, Mount Forest, Dundalk, Flesherton, Owen Sound and other stations on this route will take the first morning train for Toronto.

An officer to take charge of pupils will be on the train leaving Ottawa at 11 a. m.

Pupils from Rockland, Montebello, Ottawa and vicinity will take the 11.00 a. m. train from Ottawa; Stittsville, 11.28 a. m.; Carleton Junction, 11.58 a. m.; Smith's Falls, 12.30 p. m.

Pupils from Mattawa, Pembroke, Cobden, Renfrew, Egauville will take early morning train to connect at Carleton Junction with the one from Ottawa at 11 o'clock.

Pupils from Perth, Finch and other points adjacent will require to get to Smith's Falls for the 12.30 p. m. train for Brockville.

OTHER ROUTES.

Pupils from Madoc and the country generally, those who come by boat and other conveyances, are requested to be at the Institution as early as possible on the day of opening—WEDNESDAY, SEPTEMBER 15th, 1897.

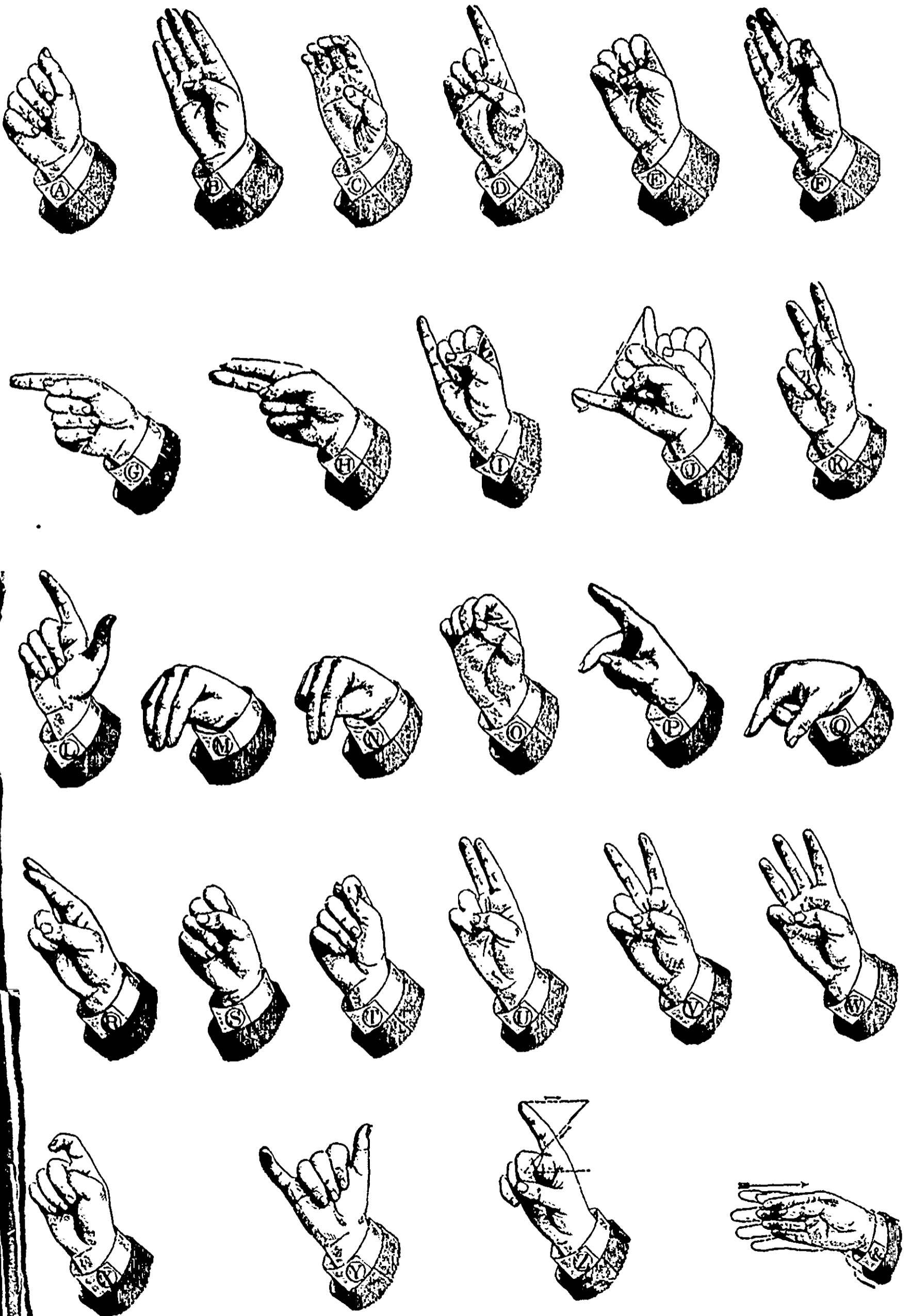
R. Mathison

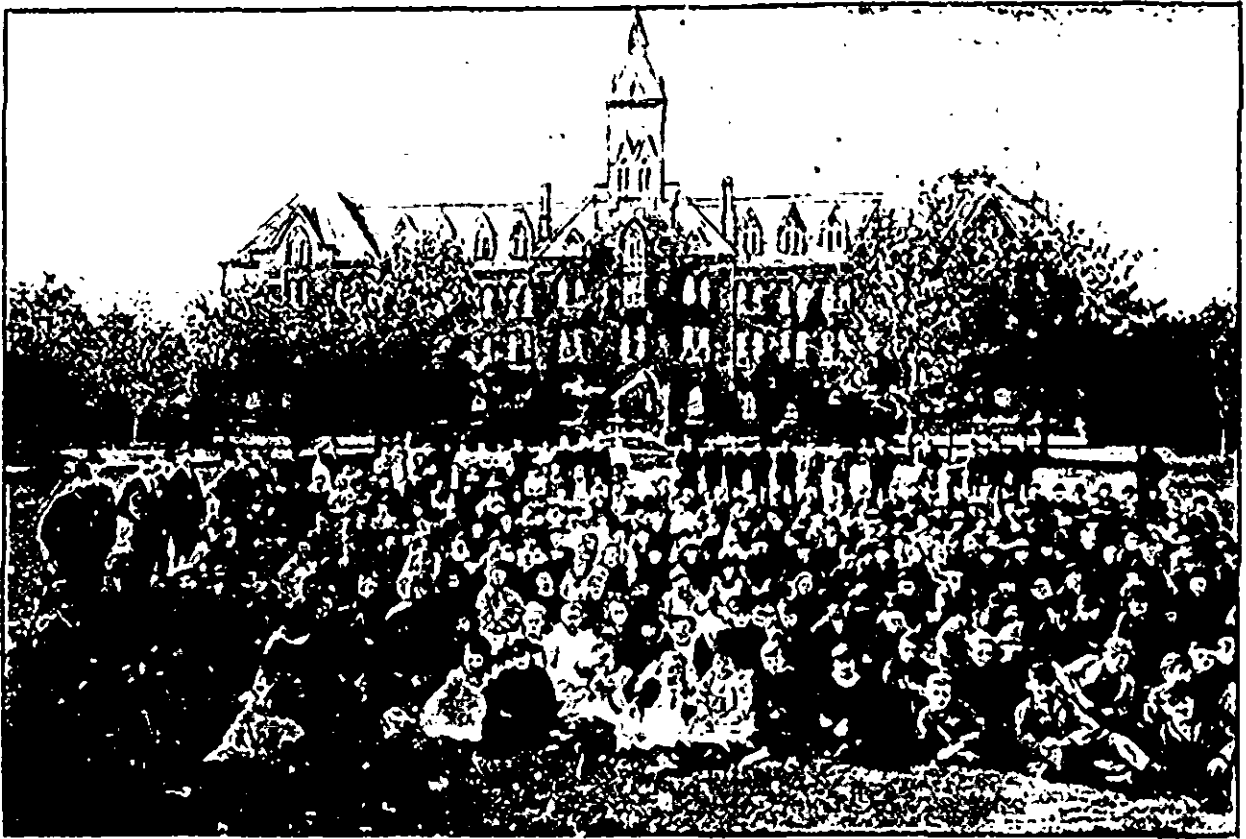
Superintendent.

SPECIAL NOTICE.

I want to direct special attention to the fact that arrangements have been made FOR ALL PUPILS IN TORONTO, and west of that city, to come on the train leaving Toronto at TWO (2) O'CLOCK on the afternoon of WEDNESDAY, SEPTEMBER 15th. There will be no officers on LATER TRAINS. R. M.

SINGLE-HAND ALPHABET.





GROUP OF OFFICERS, TEACHERS AND PUPILS.



CONVENTION OF GRADUATES.