

2
HEAD OF SULLIVAN

A Visit to the Heather Bell and Mackey Mountain.

SOME ENORMOUS LEDGES

Great Body of Sulphide Ore on the Heather Bell-Quartz Ledges From 8 to 20 Feet Wide on the Mackey Group.

Two or three weeks ago I paid a visit to a group of claims including the Goldie, Rene, St. Paul, Belcher and others near the mouth of Sullivan creek, about 15 miles north of Rossland. Last Saturday I went up to the head waters of Sullivan creek and saw the Heather Bell, the Mackey group, and other claims in that vicinity. Much assessment and development work is being done from one end of Sullivan creek to the other, and I look for some substantial results this season.

A good trail, made by the provincial government, runs from the mouth of Sullivan creek for five or six miles up toward its source, which consists of a number of small streams running down from the summit of Mackey mountain. This mountain, named for Bob Mackey, a miner and prospector who is well known in Rossland, and who made the first locations in the upper Sullivan creek country, is about 5,000 feet high and there is yet an abundance of snow upon it.

It is a very steep climb all the way from the Columbia river to the summit of the mountain. The trail is a well constructed one, and skirts, for most of the distance, along the south side of the canyon, through which runs Sullivan creek. This stream comes roaring down our boulders and logs and precipices, working itself often into a white foam or sheet of translucent spray.

The Heather Bell. At the end of the government trail the Heather Bell trail begins, and it was over this I traveled to the Heather Bell mine, the one upon which more work has been done than on any other in the Sullivan creek district. The development of this property was made last December and was continued all winter in whose company I made the trip last Saturday. A tunnel has been run in on the vein 145 feet, and a shaft had previously been put down about 50 feet, the tunnel intersecting the shaft. The face shows a fine body of ore, while in the south or foot wall side is a solid mass of ore, the width of which has not yet been ascertained by crosscut.

So far the ore taken from the Heather Bell has been low grade, with now and then a good assay, but enough gold is present to amply justify the continuation of development work. I am inclined to the opinion that there will be found here an immense ore deposit, and probably one of the great mines of the district.

A contract is just now to be let for the extension of the tunnel another 100 feet. The purpose of the company is no doubt to run about 250 feet further and meet under the big ledge on the hill above. Here a depth of 300 to 400 feet will be secured, and by crosscutting it can be learned just what there is in the mine.

The Mackey Group. Bob Mackey was the pioneer prospector on Mackey mountain, and he made good use of his opportunity. He located the Mackey, the Golden Cross, the Nevada Fraction, and the Golden Age. What is known as the Heather Bell ledge runs from the Heather Bell group west into the Neptune Fraction, then into the Nevada Fraction, and the Golden Age. The ledge is 30 feet wide, the ledge matter all the way across being impregnated with pyrites of iron. The development work on the Heather Bell is giving much strength to all the claims on the west extension of the ledge.

But the feature of the Mackey group which would perhaps most strongly appeal to a mining man is the existence of two large quartz ledges running northeast and south-west through the Mackey and Golden Cross. These ledges are parallel and are only two or three hundred feet apart. They can be traced for four or five miles and are in porphyry formation. At the point where most work has been done I found a coarse grained porphyry on the foot wall side and a fine grained and darker porphyry on the hanging wall side.

Wherever these quartz ledges have been opened they have been found to carry some iron pyrites and more or less gold. Mr. Mackey says his lowest assay was \$2.40 in gold and his highest \$14 in gold. If the gold value in the ore proves to be sufficient, these ledges will be of immense value. Very little prospecting has been done on either as yet. Shallow cuts have been made here and there, but in no instance did I observe that the full extent of the vein had been opened up.

The impression made upon me by what I saw on Mackey mountain was that there are a number of strong iron-capped and quartz ledges running through the country, with good chances for the finding of pyrites of great size and permanence. Water and timber for mining purposes are abundant, and a wagon road could be built from the mines down to the mouth of Sullivan creek without very great expense. The entire distance is not over seven miles. At the Columbia river there is steamer transportation and the railroad from Trail to Robson will soon be in operation. J. K. R.

TELEGRAPH LINE TO FT. STEELE.

Spokane Attorneys and Western Union Officials to Build From Jennings. SPOKANE, Wash., June 7.—[Special.]—Articles of incorporation of the Spokane & Fort Steele Telegraph and Telephone company were filed with the county auditor today. The incorporators are George M. Forster and W. J. C. Wakefield, the well-known firm of Spokane attorneys. The trustees for the first six months are the incorporators and A. D. Campbell, of Spokane, and I. McMichael and J. Levin, of St. Paul. The capital stock of the company is \$12,000, divided into 120 shares of the par value of \$100. The term of the corporation is 50 years. Spokane is made the principal place of business for the corporation.

George M. Forster, when seen today regarding the purposes of the company, said: "It is our intention to first construct a telegraph line from Jennings, Mont., to Fort Steele, and later, if the business warrants it, we will put in a telephone service and furnish electric power."

The material for the telegraph line has already been ordered, and within 40 days from today messages can be sent by wire from all parts of the world to the Fort Steele country. As it is now it takes about a week to communicate with Fort Steele and get a reply by mail, the only means of communication with that section at the present time. The new telegraph line will be equipped in the most approved fashion. Three of the most approved Western Union employees, all of whom hold stock in the new company, not for the Western Union, but as individuals. The Spokane and Fort Steele Telegraph and Telephone company is a corporation entirely foreign to the Western Union, but friendly relations will exist between the two in the interchange of business.

NO CONCLUSION REACHED

Mining Exchange Not Yet Consolidated With Board of Trade.

General Meeting to Be Called to Discuss the Question—Jubilee Celebration—Mail Service.

The proposition to allow the proposed new mining exchange to become a branch of the board of trade was extensively discussed at the meeting of the latter organization held Monday night in the city council rooms. The upshot of the discussion was a motion by Mr. Clabon that the council of the board of trade confer with the committee of the proposed exchange concerning the bylaws for the government of the exchange and other important points connected with the management, and make a report to a general meeting of the members of the board of trade to be called by the president. Mr. Hewitt seconded the motion and it was carried.

It was almost 9 o'clock before a quorum of nine members was obtained. President McLaughlin called the meeting to order and announced that it was the intention to have a free discussion of the views of the members on the matter of combining the mining exchange with the board of trade. He stated that in the event of such an alliance the council of the board of trade would have complete control over the exchange and that all resolutions and other official acts of the body would have to be approved by the council of the board.

President McLaughlin further stated that it was his idea to have an exchange that could not be used by unscrupulous brokers to manipulate stocks. He gave it as his opinion that if a new exchange should be formed it should be conducted under the auspices of the board of trade, and as he felt sure that the exchange would be formed he wanted the board to consider the matter at once.

Expressions of opinion from J. W. Cover, Oliver Durant, Smith Curtis and others were heard. Mr. Cover said he was opposed to mining exchanges, and he declared that they are an evil and not a benefit. He cited instances to show that the operation of mining exchanges does not help in the development of the mines, and he said that the exchange in San Francisco is a mere gambling device. If an exchange was to be formed he believed that none but listed stocks should be quoted and dealt in on the floor of the exchange. And he also thought that no stock should be listed unless the company owning the mine requested by the exchange's committee to ascertain the exact value of the property.

Oliver Durant coincided with Mr. Cover in the matter of listed stocks. Mr. McLaughlin said that it was his idea to have British Columbia stocks quoted in British Columbia, and not in Spokane or Toronto. He thought that quotations should emanate from Rossland, the center of the mining business. A discussion on other features of the proposed amalgamation was indulged in, ending in Mr. Clabon's motion.

A motion to have Secretary Franklin notify the postmaster general that Rossland is at present getting mail from the morning but three times a week instead of six, and urging him to remedy the matter at once, was put by Mr. Hewitt and carried. Mr. Hewitt also moved that the secretary notify all members of the Board to be present at the meeting to be held Thursday night to arrange for a celebration of Jubilee day. The names of John McKane and H. P. Sweeney were presented for membership. The meeting adjourned after voting Mayor Scott the thanks of the Board for allowing the organization the use of the council chamber.

WORKING AGAINST HEINZE.

Coast Members Want the Subsidy Given to Victoria & Eastern.

OTTAWA, Ont., June 5.—Maxwell, McInnes, M. P., Senator McInnes, Dr. Milne, and MacLean had a long interview with Minister Sifton today regarding the Victoria & Eastern railway. They asked that the government subsidy go to this road instead of the Columbia & Western railway, and were told that the matter was not settled.

No decision has yet been reached in regard to the London election case.

Salvationists in Hamilton. HAMILTON, Ont., June 7.—Commissioner Eva Booth, of the Salvation army, is visiting here, accompanied by an army bicycle corps, and is holding special services.

C. O'BRIEN REDDIN, President. C. F. JACKSON, Secretary-Treasurer.

THE REDDIN-JACKSON Co.,
LIMITED LIABILITY.

MINING AND INVESTMENT BROKERS.

TO INVESTORS. Write us if you desire to invest in Rossland, the greatest gold camp in the world. We are on the spot and will fill your orders or invest your money to the best advantage. We handle mines, stocks and real estate and are agents for Rossland townsite and the railway addition to Rossland.

We have invested many thousands of dollars for our clients. We are the recognized financial agents and investment brokers. Write any bank or commercial firm in Rossland for our rating and standing. We are the pioneer investment brokers of Rossland and our experience is at the service of our clients. We have no property of our own to sell nor no mining schemes to promote. We do a legitimate brokerage business for our clients and make them money. Our commission gives us sufficient profit. You have no commission to pay. The seller pays us.

WRITE US if you doubt the wisdom of investing in Rossland securities. State plainly what particular information you want and we will gladly answer your queries. Many people think that to invest in mines is to gamble. This is a fallacy. Mines and mining stocks are a legitimate investment if the same care and judgment be used as in other financial transactions. If you have no practical experience we have. Mining is our business. Our experience will place at your disposal and we request that you will open up correspondence with us.

The Reddin-Jackson Co., Ltd.
P. O. Box 397, Rossland, B. C.

SHOOTING AT YMIR

Different Version of the Story From That Reported at Nelson.

A PARTNERSHIP QUARREL

Bullion Claim Shows Antimonial Silver and Molybdenum Beside Gold—Porcupine Was the Pioneer Claim and Has High Grade Ore.

Ymir, June 4th.—[Special.]—A somewhat serious disturbance occurred here yesterday between two hotel proprietors, Chisholm and MacDonald. It appears that for some time past some dispute had existed between the two as to the distribution of the profits of their business, and yesterday affairs reached a climax. After a violent altercation MacDonald retired to his room, and fired off two shots from his heavy Winchester rifle. Chisholm thereupon went for his revolver and fired a shot through the panel of the door of MacDonald's room. The bullet just grazed the latter inflicting a slight wound. MacDonald today left for Nelson to fetch a constable to arrest his assailant, who, however, has not been seen since the disturbance, having evidently left town in fear of the consequences of his rash act.

As already announced a petition has been forwarded to the local authorities asking for the appointment of a police constable for the town, and in view of this disturbance it is hoped that the appointment will be made without delay. It is the only really serious affair which has occurred in the town which is certainly a good record for such a large camp composed of so many mixed characters and nationalities.

Business here is increasing so rapidly that it has been found necessary to increase the length of the railway sidetrack. It is now of sufficient length to take 18 cars.

Assessment work is being done on between thirty and forty new claims, all within a radius of five miles of Ymir.

Last Chance Claim.

The Last Chance claim, belonging to the Kootenay-Tacoma company, is a very promising property. It is situated on Quartz creek, about two miles up from Ymir. A 25 foot shaft has been sunk and a fine ledge, 14 feet in width, uncovered. An assay taken near the surface gave \$2 in gold, but since then the vein has improved with the greater depth. The claim was located in December last by Jans Olsen, who retains an interest in the present company and is working the property on its account. He confidently expects to strike a rich body of ore at 50 feet below the surface, when he hopes to uncover one of the rich ledges which run through the adjoining Bullion claim.

Bullion is Well Named.

The Bullion claim is also a fine prospect and bids fair to become one of the richest properties in the district. It has no less than five distinct ledges running

THE CONTRACT LET

Dan Mann and William Mackenzie to Build the Crow's Nest Pass Line.

NEW STORY ABOUT HEINZE

He is Said to Have Charles Hyman of London and Herbert Holt of Montreal Interested With Him—Subsidy Asked For.

MONTREAL, Que., June 7.—Messrs. Dan Mann and William Mackenzie will have the contract from the C. P. R. to build the Crow's Nest Pass railway, and no doubt will sub-let it in sections, so as to permit of the greatest possible progress with construction. In all probability it will take two seasons. Railway men here estimate the construction at fully \$25,000 a mile, including bridges.

It also transpires that Charles Hyman, of London, Herbert Holt, of Montreal, and others, are interested with Heinze and his associates of the Columbia & Western, who are after a subsidy to build a railway from Robson west to Ponticon. Rumor has it they ask \$10,000 a mile, that the government offers \$6,000, and that \$8,000 may be the compromise figure.

MONKS ROASTED ALIVE

Philippine Rebels Tried to Even Up With the Spaniards.

Thrust Bamboos Through Twenty-Five Helpless Prisoners and Hung Them Over Slow Fires.

VANCOUVER, June 7.—Further interviews with the officers of the steamer Hupeh, now in port, elicit the fact that 25 Roman Catholic monks were roasted by the rebels in the Philippine islands and not by the Spanish troops, as previously reported. The information was furnished by prominent residents of Ito in the group of islands, and corroborated by a foreign consul. The Philippine islands have long been ruled by the Catholic priests, and there is thus intense hatred felt against them. The officers of the Hupeh, in fact, state that the whole trouble arose from the actions of the priests. In consequence of the cruelties practiced by the Spanish troops on the rebels, or those suspected of being in sympathy with the rebel cause, the rebels in revenge perpetrated the acts of cruelty on the helpless monks who came in their clutches.

The customary mode of roasting a sucking pig in the islands is by thrusting a bamboo through the pig and then fastening it to a tripod and roast it over a slow fire. This was done to the monks, the bamboo being thrust through them while alive.

Fort Steele Mail Robber Sentenced.

KAMLOOPS, June 7.—At the assizes here today Leitch pleaded guilty to the robbery of the Fort Steele mail after a 4½ hours' trial. He was sentenced to ten years.

SENT TO THE MAINLAND.

Victoria's Fatal Street Car To Try a New Route—Arrives Safely.

VICTORIA, June 7.—The big tramway car, No. 18, which went through Point Ellice bridge a year ago with 154 passengers on board, was to day removed from the corporation yard where it has been resting ever since. It is to be sent to the mainland for use as a baggage car between Vancouver and Westminster.

The Canadian-Australian steamer Aorangi, several days overdue, arrived this evening. The delay had been caused by the disabling of her machinery. She went to Esquimalt this evening to unload ordnance and supplies brought from England for this station, and will proceed to Vancouver at daylight.

Immigration Returns Gratifying.

OTTAWA, Ont., June 7.—As the season advances the immigration returns give indications of a healthy flow of population to Canadian shores. There are more people coming from the United States and from Europe than at any time during recent years. Some 300 French Canadians have been repatriated from Michigan.

Drowned in Lake Nipissing.

CALLENDAR, Ont., June 7.—While Dr. E. C. Engelo and Dr. K. P. Engelo, the latter belonging to Chicago, were out sailing Friday on Lake Nipissing, their boat was upset in a squall and Dr. E. C. Engelo was drowned. The body was found yesterday and will be removed to Stratford and thence to Chicago for burial.

Canadian Pacific Railway.

AND SOO PACIFIC LINE.
The Cheapest, Most Comfortable and Direct Route From ROSSLAND, KASLO, NELSON AND ALL KOOTENAY POINTS.

Through Tickets to and from the Pacific Coast to Eastern and European Ports. Equipment unsurpassed, combining palatial dining and sleeping cars, luxurious day coaches, tourist and free-colonial sleeping cars run on all trains.

Commencing June 1st a daily service will be inaugurated by the C. P. R. Kootenay steamers, leaving Rossland daily at 3 p. m., for all points east and west, making direct connection with steamer at Trail.

Steamer LYTTON leaves Trail daily at 8:30 a. m., connecting at Vancetta and Northport with Spokane Falls & Northern. For particulars as to rates, tickets, terms, etc. apply to any agent Canadian Pacific Railway, or to A. B. MACKENZIE, Agt., Rossland. H. M. MACGREGOR, Traveling Passenger Agent, Nelson. GEO. MCL. BROWN, District Passenger Agent, Vancouver.

THE WEEK

Ore Receipts Tot Against 212

A BIG TUNNEL

Kaslo, June 5.—The news of the Kaslo & Slocan continues good, and able movement of passenger traffic is in condition. The morning showing an increase which may fairly be some of the largest lists, which immediate future road will be completed and the accumulations will then be rapidly Noble Five property enter the lists with than at any previous tory. There also Coin Mining & shipment of a car to the Kootenay Or the corporate name which has leased to now engaged in work as state.

The receipts of the Kaslo & Slocan week ending June 8 MINES. Slocan Star... Washington... Antelope... Coin. Co. of Ajax... Sunset... This makes a total of very nearly 960 this ore goes to E while that of the Slocan is sent to the smelter at Omahwa, portion is sent to S Mining Notes The Kaslo Mont pany has awarded foot tunnel at the Walker, and in as completed at the conclusion that they a small compressor work. It is expected tractor will be re the first of October for the west and sent out. The competing for the works, of Chicago plant, of Milwaukee known house of E The tug Kaslo, ing, towed up from barge laden with from the Black signed to the Koot will be run through company today as valuable.

Fred Steele has Black Diamond of in the agreement of the material and Little Down town of Ainsworth now being worked ery has been put under the super G. S. Gallop Herbert Chataway, ived one-half in claim Copperhead end" of Duncan location, situated Kootenay lake, mouth of Kooten assigned a four-tion and agreed Sherbrooke, Que Forcupine seems a gold to Henry their mineral claim about a quarter water station, of railway, an ad time during recent years. Some 300 French Canadians have been repatriated from Michigan.

Alexander Sp New Denver, his pen, the west Slocan, the Queen and Slocan at the head of creek. He is to three months at m. Anderson, undivided one-ti fic mineral claim side of Sixteen 1,500 feet east of F. R. Twigg, W Stack. The B. N. now been fully placed upon t Green is the pr Lean vice-pres the probable stock is 1,000 300,000 shares. Immediately a block of 5,000 cents upon the mining engine property. The Blue B worked for a c intended to p present season earliest shipped Ball

The baseball Thursday last Kaslo nine w notwithstanding largely in fa was unfortunate that Bay should be w though there w the field over there was no the close of th Rossland was close the gam and ran for t touched by E him out, an

Weekly Rossland Miner. Published Every Thursday by the ROSSLAND MINING PRINTING & PUBLISHING CO. LIMITED LIABILITY.

THE SUBSCRIPTION PRICE OF THE WEEKLY ROSSLAND MINER for all points in the United States and Canada is Two Dollars a year or One Dollar and Twenty-five Cents for six months.

Shipments of Ore. From January 1 to June 5, inclusive, the shipments of ore from mines at Rossland to smelters were as follows:

WATER AND SEWERAGE. The city has to grapple with two very important questions—water supply and sewerage. There does not seem to have been much done in either direction.

NORTHERN MAIL SERVICE. We beg to draw the attention of Mr. Bostock to the fact that though the C. P. R. has established a daily steamer service on the Columbia river and though the department is well aware of this fact and has been repeatedly petitioned by various communities throughout British Columbia to inaugurate a daily mail service no such service has yet been granted.

JUBILEE DAY CELEBRATION. Jubilee day is now but two weeks off and as yet no systematic celebration of the event in Rossland has been arranged.

THE NEW MINING EXCHANGE. The negotiations to consolidate the proposed new mining exchange with the board of trade are proceeding smoothly.

gentleman who undertakes the labor of organizing a genuine Jubilee day celebration.

The board of works did a wise thing in reducing the rate of wages for labor on the streets from \$3 to \$2.50.

ROSSLAND'S police officers are doubtless very capable and wide-awake men, but it is asking a trifle too much of them to expect them to be able to handle the gang of hoboes which proved too much for the police of Butte and Helena.

BETTER BUSINESS METHODS NECESSARY. UxBRIDGE, Ont., June 3. EDITOR MINER—Sir: With many others I consider that I was "taken in" for some stock in Nest Egg and Palmyra, when their stock was floated in Toronto last year at 25c and 15c.

MINING COMPANIES' LICENSES. SPOKANE, Wash., June 7, 1897. EDITOR MINER—Sir: As you have heretofore made it a point to keep miners and mine owners apprised of their legal status, I take the liberty of addressing the following inquiry to you.

POLICE COURT NEWS. Devono Fined \$50 for Assaulting Mrs. Click—Rhinehart and West Let Go. Magistrate Jordan Tuesday morning sustained the motion of Attorney McLeod to dismiss the case of attempted criminal assault against Gabriel Devono.

FATHER LE MAY'S LONG ILLNESS TERMINATED FATALLY TUESDAY AFTERNOON. Father Le May, the pioneer catholic priest of Rossland, died at the parochial residence Tuesday afternoon shortly after 4 o'clock.

THE WEEKLY ROSSLAND MINER CONTAINS ALL THE NEWS OF KOOTENAY. Two dollars per year to any part of the United States of Canada.

NOTICE TO SHAREHOLDERS. Notice is hereby given that a special general meeting of the shareholders of the Gopher Gold Mining Company (limited liability) will be held at the office of the company, Columbia avenue, Rossland, on Monday, the 12th day of July, 1897.

GRAND FORKS NEWS

City Council Has Been Questioned With the License Wreathing. FINE NATIVE COPPER ORE Rich Samples Brought Down From the Banner in Summit Camp—Bonita Tunnel Coming Into Ore—Work Started on Government Buildings.

GRAND FORKS, June 6.—[Special.]—The city council held a meeting on Saturday afternoon, and for upwards of two hours discussed a proposed clause in the license bylaw, allowing saloon licenses without requiring hotels to be run in connection therewith.

There was an interesting fight in the council over this question, because of the fact that there is now being some talk here of a concert hall, and an effort was made to pass the bylaw allowing the concert hall to sell liquor without a hotel being run in connection.

At a former meeting of the council it was decided to recommend Police Magistrate P. T. McCallum for appointment on the licensing board.

A VERY NARROW ESCAPE. Accident to Grand Forks Stage Four Miles From Toulou's Ranch. Brakes Failed to Hold—Stage Collided With a Tree and Three Men Out.

GRAND FORKS, June 9—2 a. m.—[Special.]—The Marcus stage did not arrive in Grand Forks until after 1 o'clock this morning on account of an accident which occurred about four miles north of Toulou's ranch, where the first change of horses was made.

HIS END WAS PEACE. Father Le May's Long Illness Terminated Fatally Tuesday Afternoon. Father Le May, the pioneer catholic priest of Rossland, died at the parochial residence Tuesday afternoon shortly after 4 o'clock.

NOTICE TO SHAREHOLDERS. Notice is hereby given that a special general meeting of the shareholders of the Rossland-Helmshausen Gold Mining Company (limited liability) will be held at the office of the company, Columbia avenue, Rossland, on Monday, the 12th day of July, 1897.

NOTICE TO SHAREHOLDERS. Notice is hereby given that a special general meeting of the shareholders of the R. E. Lee Gold Mining Company (limited liability) will be held at the office of the company, Columbia avenue, Rossland, on Monday, the 12th day of July, 1897.

decided to perform tracheotomy, that is, cut into the larynx and insert a silver tube through which the patients could breathe.

Before he died his lifelong friend and fellow-priest, Father Rivers, of Wisconsin, administered the last sacrament to him.

There was an interesting fight in the council over this question, because of the fact that there is now being some talk here of a concert hall, and an effort was made to pass the bylaw allowing the concert hall to sell liquor without a hotel being run in connection.

At a former meeting of the council it was decided to recommend Police Magistrate P. T. McCallum for appointment on the licensing board.

A VERY NARROW ESCAPE. Accident to Grand Forks Stage Four Miles From Toulou's Ranch. Brakes Failed to Hold—Stage Collided With a Tree and Three Men Out.

HIS END WAS PEACE. Father Le May's Long Illness Terminated Fatally Tuesday Afternoon. Father Le May, the pioneer catholic priest of Rossland, died at the parochial residence Tuesday afternoon shortly after 4 o'clock.

NOTICE TO SHAREHOLDERS. Notice is hereby given that a special general meeting of the shareholders of the Gopher Gold Mining Company (limited liability) will be held at the office of the company, Columbia avenue, Rossland, on Monday, the 12th day of July, 1897.

NOTICE TO SHAREHOLDERS. Notice is hereby given that a special general meeting of the shareholders of the Rossland-Helmshausen Gold Mining Company (limited liability) will be held at the office of the company, Columbia avenue, Rossland, on Monday, the 12th day of July, 1897.

NOTICE TO SHAREHOLDERS. Notice is hereby given that a special general meeting of the shareholders of the R. E. Lee Gold Mining Company (limited liability) will be held at the office of the company, Columbia avenue, Rossland, on Monday, the 12th day of July, 1897.

Certificate of Improvements. NOTICE. Kiwi Scarabeus Goulash mineral, claims, situated in the Trail Creek mining division of West Kootenay district, where located: On Lookout Mountain south of and adjoining the Pittsburg group.

Certificate of Improvements. NOTICE. Silver Bear mineral claim situated in the Ainsworth mining division of West Kootenay district, where located: About 16 miles from Kaslo on the South Fork of the Kaslo River.

Certificate of Improvements. NOTICE. Public notice is hereby given that The Tribby Mining Corporation, Limited, Foreign, a company duly registered in the province of British Columbia under Part IV of the Companies Act, 1895 and amending acts, will, after three months from the first publication hereof in the British Columbia Gazette and in the Weekly Miner, a newspaper published at Rossland, the locality in which the operations of the corporation are carried on, apply under the Companies Act, 1895 and amending acts, to the Registrar of Companies in order to change the name of the corporation to "The Gold and Silver Mining Corporation, Limited, Foreign."

Certificate of Improvements. NOTICE. White Swan mineral claim, situated in the Trail Creek mining division of West Kootenay district, where located: East of and adjoining the Hidden Treasure mineral claim.

Certificate of Improvements. NOTICE. Hidden Treasure mineral claim, situated in the Trail Creek mining division of West Kootenay district, B. C. where located: North of and adjoining the Crown Point mineral claim.

NOTICE TO SHAREHOLDERS. Notice is hereby given that a special general meeting of the shareholders of the Gopher Gold Mining Company (limited liability) will be held at the office of the company, Columbia avenue, Rossland, on Monday, the 12th day of July, 1897.

NOTICE TO SHAREHOLDERS. Notice is hereby given that a special general meeting of the shareholders of the Rossland-Helmshausen Gold Mining Company (limited liability) will be held at the office of the company, Columbia avenue, Rossland, on Monday, the 12th day of July, 1897.

NOTICE TO SHAREHOLDERS. Notice is hereby given that a special general meeting of the shareholders of the R. E. Lee Gold Mining Company (limited liability) will be held at the office of the company, Columbia avenue, Rossland, on Monday, the 12th day of July, 1897.

NOTICE TO SHAREHOLDERS. Notice is hereby given that a special general meeting of the shareholders of the Gopher Gold Mining Company (limited liability) will be held at the office of the company, Columbia avenue, Rossland, on Monday, the 12th day of July, 1897.

Certificate of the Registration of a Foreign Company. "Companies Act," Part IV, and Amending Acts. "GOLDEN CROWN MINING AND SMELTING CO." (Foreign).

Certificate of Improvements. NOTICE. Sunset No. 2, Gold Hunter and Alabama mineral claims, situated in the Trail Creek mining division of West Kootenay district, where located: In township 64, section 27.

Certificate of Improvements. NOTICE. Columbus mineral claim situated in the Trail Creek mining division of West Kootenay district, where located: Southeast of the Vain mineral claim, north of Rock Creek, about two miles from Columbia river.

Certificate of Improvements. NOTICE. Black Diamond mineral claim situated in the Trail Creek mining division of West Kootenay district, where located: West of and adjoining the Blaine mineral claim.

Certificate of Improvements. NOTICE. Venus Fraction mineral claim situated in the Trail Creek mining division of West Kootenay district, where located: Bounded by the following claims: Mammoth, etc., mineral claims.

Certificate of Improvements. NOTICE. R. Lee mineral claim, situated in the Trail Creek mining division of West Kootenay district, where located: North of and adjoining the Derby mineral claim.

Certificate of Improvements. NOTICE. Annie E. Fraction mineral claim situated in the Trail Creek mining division of West Kootenay district, where located: On Deer Park mountain north of the Grand Prairie.

Certificate of Improvements. NOTICE. Olivette mineral claim, situated in the Trail Creek mining division of West Kootenay district, where located: North of and adjoining the Derby mineral claim.

LODGE MEETINGS. COIRINTIAN LODGE, No. 27, F. & A. M. Meets in Rossland Masonic Hall on the first Thursday of each month, Visiting Brethren invited.

QUEEN CITY Kootenay Mining Station to Meet GILLIS' BODY He Was Killed in Their Last Winter's New and Rich Mines Shipment KASLO, June 8. The body of the executive of the Kootenay Mining Station was called for last night by Nelson, but no bus as a quorum was not a quarterly meeting to be held at Rossland the 12th inst. there will be a several important ones for determination. The body of Fore last winter, was found in a snowdrift near the mine, which for ever since to melt. It was packed in a coffin and pushed car to this city, where it was placed in the hands of Mr. Arthur for burial. The of the Ibeex company attention to the remains of his wife, Mrs. Fore. A slide on the basin of Sprered a vein of ore, which is said to be the richest in the district, Porter, of Rossland this valuable property. A prospecting party on Sunday morning, extent of country, members will go to the south and the Nest Pass from the work they were to do as they were to do, which comes down the Duncan river. The consume a considerable amount. The Payne was completed and is now Shipment have been loads having come in. It is estimated that the day will be sent and the balance of Puget Sound Red etc. A close appraisement of the mine, the fortunate owner, less than \$50,000, mate is considered initiated. Mining News W. A. Bess has Brown of Spokane he acquired some mineral claims in Hazel, O. From the properties are a creek, and in the well-known W. Mr. Bess has been the consent agreement of transfer of the claims to Cornelius Henry E. one-sixth in the Five, situated in Hazel, O. immediately Some fine look are exhibited today during a tramp on the city, or at a location as the while the claim is L. R. Lindsay down on Monday grants claim with the in the Spring has been run in a and a crosscut is very promising report. The steamer Alton is expected to be towed up from Alton with ore from the works of the Kootenay. Personal Alexander Smith Surprise mine, re Canada, where he usual spring visit. While absent in Hazel, O. Mr. Martin's mining property in vicinity, upon which encouraging reports are being received. Dr. R. G. Bretton and Inspector the Northwest amongst the visit Kaslo. They are Kootenay county heard so much of the can for the C. P. West of Winnipeg. On Monday a storm experienced at the time the rain quickly flooding times mingled with the hills and Kaslo & Slocan a couple of hours had been blown track. Arrangements for the formation of the Arch Masonry in as one or two in the first meeting C. W. With chased a lot on street, near Fifth buildings which will and will erect structure for use. The design is of the upper end of has been subd

QUEEN CITY GOSSIP

Kootenay Mining Protective Association to Meet Here Saturday.

GILLIS' BODY RECOVERED

He Was Killed in a Snowslide at the Ibox Last Winter—Carbonate Finds a New and Rich Ledger—Payne Resumes Shipments.

KASLO, June 8.—[Special.]—A meeting of the executive committee of the Kootenay Mining Protective Association was called for last Thursday evening at Nelson, but no business was transacted, as a quorum was not present.

The body of Foreman Gillis, who perished in a snowslide at the Ibox mine last winter, was found imbedded in the snow and ice last Friday by those working at the mine, who had kept a close watch for it ever since the snow began to melt.

Carbonate's Rich Find. A slide on the Carbonate, located in the basin of Spring creek, has uncovered a vein of ore, hitherto unknown, which is said to be richer than anything previously found upon the claim.

Payne a Big Dividend Payer. The Payne wagon road has been completed and is now in shape for traffic. Shipments have been resumed, two car loads having come forward on Saturday last.

Minings Notes and Transfers. W. A. Bess has transferred to R. E. Brown of Spokane the interests which he acquired some months since in the mineral claims Nancy Hanks, Mand S., Hazel C., Fresno and Laak Link.

Arrangements are about perfected for the formation of a chapter of Royal Arch Masonry in this city, and as soon as one or two minor details are arranged the first meeting will take place.

Arrangements are about perfected for the formation of a chapter of Royal Arch Masonry in this city, and as soon as one or two minor details are arranged the first meeting will take place.

Arrangements are about perfected for the formation of a chapter of Royal Arch Masonry in this city, and as soon as one or two minor details are arranged the first meeting will take place.

Arrangements are about perfected for the formation of a chapter of Royal Arch Masonry in this city, and as soon as one or two minor details are arranged the first meeting will take place.

Arrangements are about perfected for the formation of a chapter of Royal Arch Masonry in this city, and as soon as one or two minor details are arranged the first meeting will take place.

Arrangements are about perfected for the formation of a chapter of Royal Arch Masonry in this city, and as soon as one or two minor details are arranged the first meeting will take place.

BLAIR'S PLAIN TALK

Columbia & Western Charter Was Before the Railway Committee.

COAST CITIES MUST WAIT

Opposition to the Bill Comes From Them, But Mr. Blair Says They Will Have to Do With One Railway For a Few Years Yet.

OTTAWA, Ont., June 8.—[Special.]—The Columbia & Western railway bill was up before the railway committee today. Mr. Bostock explained it, after which Dr. Milne, of Victoria, and Mr. McLean, of Vancouver, opposed it.

He did not think it was right to encourage the coast cities. He believed that the government would assist the road, but it would cost millions to reach the coast at present, and the coast cities must be content for a few years with one railway.

HAS AN AMBITIOUS NAME

English Syndicate Has Started a New Town Opposite Balfour. Provincial Government Says Nelson Cannot Get Possession of the Jail—Police Officers' Salaries Raised.

NELSON, June 7.—[Special.]—There is a little difference of opinion between the city and the provincial authorities, and while it has not assumed the proportions of a war, there is sufficient feeling to make it decidedly interesting to the outsider.

New Town Started. A company of English capitalists has secured possession of that point of land at the junction of Kootenay lake and the west arm of the lake, and the town of Kootenay City has been born.

Son of a Pioneer Chief Justice. Captain Needham, R. N., who arrived in this city Tuesday, is the son of the late Chief Justice Needham of Vancouver island, when that important adjunct of the mainland was a crown colony.

Provincial Timber Inspector Here. John Murray, of Vancouver, provincial timber inspector, is in Rossland on official business. He lately closed up the saw mill of Rouelle & Wright at Robson, because of the company's failure to pay royalty on timber.

Arrangements are about perfected for the formation of a chapter of Royal Arch Masonry in this city, and as soon as one or two minor details are arranged the first meeting will take place.

Arrangements are about perfected for the formation of a chapter of Royal Arch Masonry in this city, and as soon as one or two minor details are arranged the first meeting will take place.

Arrangements are about perfected for the formation of a chapter of Royal Arch Masonry in this city, and as soon as one or two minor details are arranged the first meeting will take place.

BLAIR'S PLAIN TALK

Columbia & Western Charter Was Before the Railway Committee.

COAST CITIES MUST WAIT

Opposition to the Bill Comes From Them, But Mr. Blair Says They Will Have to Do With One Railway For a Few Years Yet.

OTTAWA, Ont., June 8.—[Special.]—The Columbia & Western railway bill was up before the railway committee today. Mr. Bostock explained it, after which Dr. Milne, of Victoria, and Mr. McLean, of Vancouver, opposed it.

He did not think it was right to encourage the coast cities. He believed that the government would assist the road, but it would cost millions to reach the coast at present, and the coast cities must be content for a few years with one railway.

HAS AN AMBITIOUS NAME

English Syndicate Has Started a New Town Opposite Balfour. Provincial Government Says Nelson Cannot Get Possession of the Jail—Police Officers' Salaries Raised.

NELSON, June 7.—[Special.]—There is a little difference of opinion between the city and the provincial authorities, and while it has not assumed the proportions of a war, there is sufficient feeling to make it decidedly interesting to the outsider.

New Town Started. A company of English capitalists has secured possession of that point of land at the junction of Kootenay lake and the west arm of the lake, and the town of Kootenay City has been born.

Son of a Pioneer Chief Justice. Captain Needham, R. N., who arrived in this city Tuesday, is the son of the late Chief Justice Needham of Vancouver island, when that important adjunct of the mainland was a crown colony.

Provincial Timber Inspector Here. John Murray, of Vancouver, provincial timber inspector, is in Rossland on official business. He lately closed up the saw mill of Rouelle & Wright at Robson, because of the company's failure to pay royalty on timber.

Arrangements are about perfected for the formation of a chapter of Royal Arch Masonry in this city, and as soon as one or two minor details are arranged the first meeting will take place.

Arrangements are about perfected for the formation of a chapter of Royal Arch Masonry in this city, and as soon as one or two minor details are arranged the first meeting will take place.

Arrangements are about perfected for the formation of a chapter of Royal Arch Masonry in this city, and as soon as one or two minor details are arranged the first meeting will take place.

STARTED RIGHT.

That's the whole secret. Started with full knowledge, with prime properties, with sound organization, with all our shares in the treasury, with no other business or ambitions dividing our attention, with a determination to play fair and bound to succeed.

Sunset No. 2

more than 100 per cent. This is why agents who have sold our shares are not ashamed to meet their customers. It is also why our shareholders are from time to time increasing their holdings.

The Canadian Gold Fields Syndicate, Ltd.

OFFICES: 35 Adelaide Street East, Toronto, Ont. 20 Columbia Ave, Rossland, B. C.

MINERAL CITY

Perfect Title. Level Townsite.

Lots are now on the Market

Corner Lots on Columbia Avenue from \$125 to \$150. Inside Lots \$100. Other Lots from \$75 to \$100. Terms One-third Cash, One-third in 3 Months, One-Third in 6 Months.

A Few Facts Concerning Mineral City.

The mines on Cariboo Creek in the famous SLOCAN DISTRICT are tributary to Mineral City. Tenders are being invited by the Provincial government for a wagon road from Arrow Lake to Mineral City.

Apply to the Following Agents: REDDIN-JACKSON CO., ROLT & GROGAN, SMITH, DEAN & CO., J. B. JOHNSON & CO., WEEKS, KENNEDY & CO., A. B. CLABON.

THE R. J. BEALEY CO., Ltd. Ly.

General Agents, by whom alone agreements will be given.



Delay Means Death. One Dose Relieves—A Few Bottles Always Cure. For ten years I have suffered greatly from heart disease. Fluttering of the heart, palpitations and smothering spells have made my life miserable.

he Registration of a n Company. Part IV, and Amending Act. MINING AND SMELTING Co. (Foreign.) 4th day of May, 1897. I have this day registered Mining and Smelting Co. under the "Companies Act," of Foreign Companies, the said company is situated in the state of Washington, which the company is established, own, work and operate gold, silver and other metals, with mills, to build, equip, mill, smelter or reduction plant in such business, purchase and own any real property necessary or convenient for such business, divided into six shares of the par value of one hundred and seal of office, at British Columbia, this 4th day of May, 1897. S. Y. WOOTTON, Secretary of Joint Stock Companies.

of Improvements. NOTICE. Hunter and Alabama mineral claim, situated in the Trail Creek mining district. Where located: section 47. J. A. Kirk, acting as agent for the mining improvements, free miner's certificate No. 75,781, intended sixty days from the date hereof, to apply to the mining improvements for a certificate of improvements for a crown grant of the above claim. Notice that action under section 10 of the Mining Act, 1897, is commenced before the issuance of improvements. J. A. KIRK, agent, of April, 1897. 4-30-101

of Improvements. NOTICE. Mineral claim, situated in the division of West Kootenay, bounded: West of and adjoining the claim of J. M. Cowper-Coles, acting as agent for the mining improvements, free miner's certificate No. 75,782, intended sixty days from the date hereof, to apply to the mining improvements for a certificate of improvements for a crown grant of the above claim. Notice that action under section 10 of the Mining Act, 1897, is commenced before the issuance of improvements. C. M. COWPER-COLES, agent, of April, 1897. 5-20-101

of Improvements. NOTICE. Mineral claim, situated in the division of West Kootenay, bounded: between and adjoining the claim of J. W. Astley, acting as agent for the mining improvements, free miner's certificate No. 75,783, intended sixty days from the date hereof, to apply to the mining improvements for a certificate of improvements for a crown grant of the above claim. Notice that action under section 10 of the Mining Act, 1897, is commenced before the issuance of improvements. J. W. ASTLEY, agent, of May, 1897. 5-20-101

of Improvements. NOTICE. Mineral claim, situated in the division of West Kootenay, bounded: North of and adjoining the claim of I. A. C. Galt, of Rossland, B. C., acting as agent for the mining improvements, free miner's certificate No. 82,778, intended sixty days from the date hereof, to apply to the mining improvements for a certificate of improvements for a crown grant of the above claim. Notice that action under section 10 of the Mining Act, 1897, is commenced before the issuance of improvements. I. A. C. GALT, agent, of April, 1897. 5-6-101

of Improvements. NOTICE. Mineral claim, situated in the division of West Kootenay, bounded: On Deer Park road, near Deer Park, in the Township of Deer Park, in the County of Kootenay, in the Province of British Columbia, Limited, Foreign, certificate No. 75,784, intended sixty days from the date hereof, to apply to the mining improvements for a certificate of improvements for a crown grant of the above claim. Notice that action under section 10 of the Mining Act, 1897, is commenced before the issuance of improvements. BIA GOLD DISCOVERY CO., agent, of May, 1897. 5-27-101

of Improvements. NOTICE. Mineral claim, situated in the division of West Kootenay, bounded: North of and adjoining the claim of I. N. F. Townsend, acting as agent for the mining improvements, free miner's certificate No. 75,797, intended sixty days from the date hereof, to apply to the mining improvements for a certificate of improvements for a crown grant of the above claim. Notice that action under section 10 of the Mining Act, 1897, is commenced before the issuance of improvements. I. N. F. TOWNSEND, agent, of May, 1897. 6-3-101

of Improvements. NOTICE. Mineral claim, situated in the division of West Kootenay, bounded: North of and adjoining the claim of I. N. F. Townsend, acting as agent for the mining improvements, free miner's certificate No. 75,798, intended sixty days from the date hereof, to apply to the mining improvements for a certificate of improvements for a crown grant of the above claim. Notice that action under section 10 of the Mining Act, 1897, is commenced before the issuance of improvements. I. N. F. TOWNSEND, agent, of June, 1897. 5-27-101

OUR FIRST VICTORY

Yesterday's Ball Game a Hot One From Start to Finish.

MARSHALL'S HIT DID IT

Score stood 11 to 9 in Favor of Kaslo When Rossland Got to Bat for the Last Time and Got Five Men Home.

The hoodoo is off and the Rossland baseball team has changed the order of things. It has begun to play winning ball, scoring its first victory on the home grounds Saturday against Kaslo, by a score of 13 to 11.

The weather, which has been damp all week, changed and if the weather clerk had been requested he could not have sent a more ideal ball day. About two o'clock the grand stand and bleachers commenced filling up and by three o'clock 400 spectators had paid their way into the grounds, while over half that number rubbernecked from the tops of box cars which were lying on the Black Bear spur.

The Game by Innings. Precisely at 3 o'clock Umpire Perry Smith called the game with Rossland at the bat, Kaslo taking the field. The home team was retired in one, two and three order. Kaslo came to the bat, Davey and Green scoring before the fatal third fall victims.

In the second innings the home team fared no better than in the first. Kaslo in its second did likewise and Rossland now came to the bat determined to do or die and succeeded in tying the score. Borchers' twirlers had made up their minds to keep in the lead and added two more to their credit, but their next was a shut out, Rossland receiving the same treatment at the hands of the Kaslo in the fourth and fifth.

Kaslo's Long Start. Both teams were now playing national league ball. The Kaslos got down to hard work and a costly error of Gaverly's gave them a start. At the end of this innings they had piled up eight runs to their credit.

In the beginning of the sixth things looked blue and Kaslo money was in the air, but McCallum's colts knew the hoodoo was off and pulled themselves together and added 4 more to their score.

Staunch supporters of the home team now came to the bat and took all the Kaslo money in eight. This infused new life into the game, and Rossland's score stood 8 when the visitors' was 10, and came to bat for the seventh innings. In this innings the visitors added the last run to their credit. A dispute arose, but was settled amicably. The excitement was now at fever heat, but Rossland failed to improve its position in the eighth.

Marshall's Timely Hit. Rossland now came to the bat for the last time, and had 3 to score in order to tie. People in the grand stand held their breath and thought the game was lost. Manager McCullum was an anxious look as he saw Sullivan fall a victim at the home plate. Baker, Gay and Arneson now came to bat and all reached home safely by the timely hit of Eddie Marshall, who sent out a two-bagger and won the game. The home team scored 5 in this innings, making a total of 13.

Kaslo now came to bat, determined to make two and at least tie the score, but they failed to register and three more on the bases, Rossland winning by two runs.

The Two Teams. For Kaslo, Borchers played a fine game at first base and showed good judgment. He knows how to take a deafeat gracefully and says little. Nash and Davy at points played a clean game. Coffman replaced Nash in the box in the seventh inning. Clark, Green and Drennon played good ball. Rankin made two costly errors. The Kaslo aggregation is a much stronger one than they had in Spokane, and with a little more practice will play rings around old Hutch's pets.

For the home team the battery, St. Vrain and Holland, proved to be a good combination. Arneson and Marshall handled their old time ball and both played their old time ball and both played their old time ball and both played their old time ball.

Official Score.

Table with columns for teams (Rossland, Kaslo) and players (Atwood, St. Vrain, etc.) and their statistics (AB, R, IB, SH, PO, A, E).

Ruby Creek Excitement.

GARFIELD, Wash., June 5.—[Special.]—The excitement caused by the discovery of gold in the Ruby creek district several years ago again prevails and is running very high. Gold is claimed to exist in large quantities.

WINNIPEG EXHIBITION.

S. R. Reid is Collecting a Display of Small Creek Ores.

A large number of the Manitoba and territorial people now scattered throughout West Kootenay are arranging their holiday trip east in season to attend the Winnipeg industrial exhibition which opens July 19 and continues one week. The exhibition this year promises to eclipse that of all previous years, both in the number of entries for live stock and farm and dairy products, as well as grand stand attractions. A large amount of money has been expended this year in the improvement of the main building, grand stands and track, and the program will be the finest ever given in the Canadian Northwest.

A unique feature, but one only in keeping with the times, will be a Western Canada Mineral exhibit, which is to be given a prominent place in the main building. This innovation is sure to meet with public approval, as it is nothing more than just that the product of the mines should be shown side by side with those of the field and farm. The display to represent British Columbia is being arranged by S. R. Reid, of Rossland. Mr. Reid is making a special effort to have the Trail Creek district well represented, and solicits the assistance of those interested.

FAST ATLANTIC SERVICE

Details of Contract Between Dominion and Peterson, Tait & Co.

The Four Steamers Must Be Equal to Lucania and Campania—A Torpedo Boat Tender.

[From our Special Correspondent.] OTTAWA, Ont., May 31.—The papers and correspondence regarding the fast Atlantic contract were presented to parliament last week. The contract is signed by Sir Richard Cartwright on behalf of the Canadian government and by Wm. Peterson on behalf of Peterson, Tait & Co., of Newcastle and London. It is dated the 18th of March, 1897.

The contract provides for four steamers to be constructed under the supervision of the British admiralty and having the requirements for auxiliary naval cruisers. The vessels will require to run 500, 10,000 tons gross register, to run 500 knots a day, being nearly 21 knots an hour, have a capacity for a cargo of 1,500 to 2,000 tons and to carry immigrants on their outward trip at a fare not to exceed \$15 per head. They must be equal to the best Atlantic steamers, such as the Campania and Lucania on the Cunard line.

The steamers will make their terminus at Quebec in the summer months, proceeding afterwards to Montreal, in winter will call at Halifax or St. John at the option of the company, such option to be declared before the date fixed for the commencement of the service.

The Government Subsidies. The contract is for a period of 10 years and the total government subsidies are \$254,500 a year. Of this the Dominion government will give £108,000 (\$515,000) and the Imperial government £150,000. The vessels will require to be 526 feet long with a draught of 25 feet 6 inches when loaded. This is the present available depth of the St. Lawrence to Montreal. They must have accommodation for 500 tons coal storage, and carry 300 first-class, and 200 second-class passengers and 800 steerage. The terminus of the vessels on the other side will be Liverpool.

The steamers will carry all the mails. Two of the steamers will require to be ready before May 31, 1899, and the other two not later than May 31, 1900. When the first two steamers are ready the trips will be fortnightly and after the next two are completed the service will be weekly.

The contractors are not to be allowed to accept any subsidy from any foreign country or any provincial or civic authority and the boats must not call at any foreign ports. The company also debarred from discriminating against any Canadian railway and the steamers will have to call at either side of the river at Quebec as demanded by the minister.

Torpedo Boat Tenders.

An interesting point is that a tender, built so as to be available in time of war as a torpedo boat, and having a speed of 22 knots (25 miles) per hour, must be built by the company to meet each steamer in the gulf with a pilot.

PAY FROM GRASS ROOTS

A. E. Smith Says the Golden Cup is a Sure Winner.

Quartz Contains Much Chalcopyrite as Well as Galena—Will Begin Shipments by Fack Brothers.

A. E. Smith, of Smith & Whiteman, has returned from a visit to the Golden Cup, in the Salmon river country. The mine had a notice a week ago about the discovery of this property. Smith & Whiteman purchased an interest in it immediately after the strike was made, and Mr. Smith went over to make further examination and put some men to work.

He is better pleased than ever with the showing. The claim is five or six miles south of the line of the Nelson & Fort Sheppard railroad, at a point a few miles west of Salmon. Several locations have been made since the discovery of the Golden Cup, some of them being made by Mr. Smith himself. He put several shovels into the Golden Cup vein and brought home about 50 pounds of the ore taken out.

An unexpected feature is the appearance of massive chalcopyrite. Some of this is very beautiful. No prettier copper ore has been seen in this country. It, along with the galena in the quartz, is a beautiful combination, and one not often seen. Mr. Smith says the ore is from 15 inches to two feet wide, with a perfect separation on both sides. He says there is no doubt of the value of the discovery. Every pound of ore is fit for shipment, and arrangements will be made to pack it out on horseback to the railroad.

SLOCAN CITY NEWS

Town Going Ahead Rapidly and Substantial Buildings Being Built.

WORK ON THE NEW ROAD

It is Reported That it Will Be Begun This Week—Wagon Road to Arlington Basin to be Built—Mining Notes and Personals.

SLOCAN CITY, June 4.—[Special.]—With all the imaginable circumstances that could possibly hinder the growth of a new place to contend against, Slocan City, by virtue of its own fitness, has become the chief town on Slocan lake, and promises in the near future to earn the appellation of the metropolis of the Slocan. For some months the progress of the town has been seriously retarded by the absolute impossibility of obtaining lumber to carry on building operations and the inadequate traveling accommodations on the lake. Of late, however, the lumber famine has been somewhat relieved, and, in consequence, the town is taking upon itself a different appearance. Seldom is there found in any building that has been erected here.

Recognizing that Slocan City is not destined merely to be a mining camp, but a central point of business for the Slocan district, and one of the chief points on the through railway route, the hotel men have not hesitated to invest capital in their houses, and we have in the Arlington a magnificent structure.

It is learned on the best authority that within a week the C. P. R. will have material here and men on the ground to commence work on the new road between this point and Slocan Crossing. The new C. P. R. boat, the Slocan, made her initial trip from Roseberry to Slocan City on May 22, and on that day she brought down 700 visitors to partake in the celebration held here on that day. At present she only makes one trip a day, connecting with the train from Nakusp down and returning to Slocan in the afternoon.

The new schedule will provide for two trips each day. The carpenters are still at work on board finishing the upper deck.

A good deal of interest has been manifested lately by the town people in general towards protecting themselves in the case of fires. Arrangements have been completed by the energetic committee to have all necessary apparatus ready towards protecting themselves in the case of fires. Arrangements have been completed by the energetic committee to have all necessary apparatus ready towards protecting themselves in the case of fires.

The Hon. Dr. Montague, late Dominion minister of agriculture under the Tupper regime, and Dr. Carroll, of Vancouver, have been in the city with their families, and will be in the city with their families, and will be in the city with their families.

Dr. Montague Much Pleased. The Hon. Dr. Montague, late Dominion minister of agriculture under the Tupper regime, and Dr. Carroll, of Vancouver, have been in the city with their families, and will be in the city with their families.

There has been much talk in the city about a proposed wagon road from Slocan City to the Arlington basin. The provincial government has already signified a willingness to give \$4,000 towards its construction.

Lemon Creek Mines. Lemon creek is the scene of great excitement, many rich strikes have been made there lately. The general opinion is that there are over 200 prospectors there at present.

The Howard fraction is situated about two miles from the Arlington, on the divide between Lemon and Springer creeks. It is a dry sulphide ore property running about \$205 in gold.

Personal and Brevities. Hank Boss, the old-time prospector, left this afternoon on the Kootenay for the Lardeau, where he will work this summer. He already has several good properties in that country.

Tommy Alexander, a well-known gold hunter, is in town with his bride, formerly Miss Libbie Johnson of Boundary, to whom he was married in Spokane on Friday before last. They will reside at Deer Park.

Frank O'Neill Defeated Jack Collier—Parnell and Bury Also Winners. Troy, N.Y., June 7.—Before the Empire Athletic club here tonight Frank O'Neill of Chicago, defeated Jack Collier of New York, in ten rounds.

Another property that has a fair future is the Heather Belle group, viz: South Star, Atlanta, Atchison Fraction on Lou Beckwith, of Cleveland, in two rounds.

BONFIRE ON RED MOUNTAIN.

Clabon Organizing a Party to Celebrate Jubilee Day in This Way.

A. B. Clabon is organizing a party to go to the summit of Red Mountain on Jubilee day, June 22, and build a big bonfire. Similar bonfire parties are being organized all over the British Empire.

It is a time-honored custom in England to celebrate great national events in this way, but in this, the diamond jubilee year of our Queen, the movement has extended to the colonies. Throughout Ontario almost every eminence will be crowned with a bonfire on the night of June 22.

Rossland is not to be outdone, and Mr. Clabon deserves special praise for his intention to form a large party and climb to the summit in the afternoon. This will give plenty of time to build a monster bonfire. Rockets will be taken up by the party and fired off during the evening.

At a time and place of meeting and other details are being arranged and due notice will be given of the progress of the movement through these columns.

ROW OVER RIGHT OF WAY

J. E. Conlin Objects to a Sidetrack on His Lot.

Fenced in Columbia & Western Carriage Foundry Removed and Railway Continues in Possession.

TRAIL, June 7.—[Special.]—There was a brand new fence stretched this afternoon across the sidetrack of the Columbia & Western railroad. Tonight the fence is not there, and thereby hangs this tale.

It was just an ordinary board fence, but it was placed there for no other purpose than to shut out the sidetrack. J. E. Conlin built the fence. Mr. Conlin is the representative of the Adams & Burns Liquor company of Toronto. A few weeks ago he looked about for a site on which to put up a bonded warehouse for his company.

When the river began to rise and the steamers began to carry heavy loads of freight, the railroad decided to run a new side track up to the steam wharf. The side track was promptly completed, and in reaching its end the line was built over a part of the lot which Mr. Conlin had bought.

Mr. Conlin is a very energetic man, and he is not disposed to buy the lot, either. He is planning, and he notified the C. & W. road to vacate his land. The land was not vacated, and he offered to sell the property to the company. The company was not disposed to buy the lot, either.

Then the company switched a train of empty cars on the sidetrack, and when the fence builders started in to lay their barricade across the track they were confronted by a row of solid and impassive box cars that barred any further construction in that direction.

That was several days ago. This afternoon Mr. Conlin renewed the attack. The train had been moved so that the narrow space between two cars came in line with the projected fence. Without any delay the carpenters were put to work, and they built a strong and sturdy fence across the track between the two cars.

The extension of the fence was completed, and a dozen box cars were shut in by it, and it looked like Mr. Conlin had a head. But he reckoned without his host. The engineers chuckled gleefully as they figured out how easy it would be to hitch on an engine to the train and pull it away.

Then, too, W. K. Semple appeared on the scene. Mr. Semple is the agent of the company. It didn't take him long to decide on what he should do. Calling the men on the ground or else by putting up the fence he interferes with a railroad and is liable to numerous years' imprisonment for his rashness.

At 6 o'clock tonight the parties are resting on their arms, but a revival of hostilities is looked for tomorrow. Meanwhile an interested public is awaiting the result.

Personal and Brevities. Hank Boss, the old-time prospector, left this afternoon on the Kootenay for the Lardeau, where he will work this summer. He already has several good properties in that country.

Tommy Alexander, a well-known gold hunter, is in town with his bride, formerly Miss Libbie Johnson of Boundary, to whom he was married in Spokane on Friday before last. They will reside at Deer Park.

Frank O'Neill Defeated Jack Collier—Parnell and Bury Also Winners. Troy, N.Y., June 7.—Before the Empire Athletic club here tonight Frank O'Neill of Chicago, defeated Jack Collier of New York, in ten rounds.

Another property that has a fair future is the Heather Belle group, viz: South Star, Atlanta, Atchison Fraction on Lou Beckwith, of Cleveland, in two rounds.

"The Pug"

Columbia & Ontario Gold Mining Co. Waneta, B. C.

Capitalization 750,000 Shares. Shares \$1.00 Par Value. Treasury Stock 250,000 Shares.

This property is being worked by a crosscut tunnel, the mouth of which is 110 feet from the base of Nelson & Fort Sheppard Railroad. Test pits on the surface show solid ore at a depth of eight feet carrying gold, silver and copper.

Treasury stock now on sale for 75 cents. Apply to R. R. GAMEY, Secretary-Treasurer, Gore Bay, Ont. Or J. B. MILLER, Manager, Waneta, B. C.

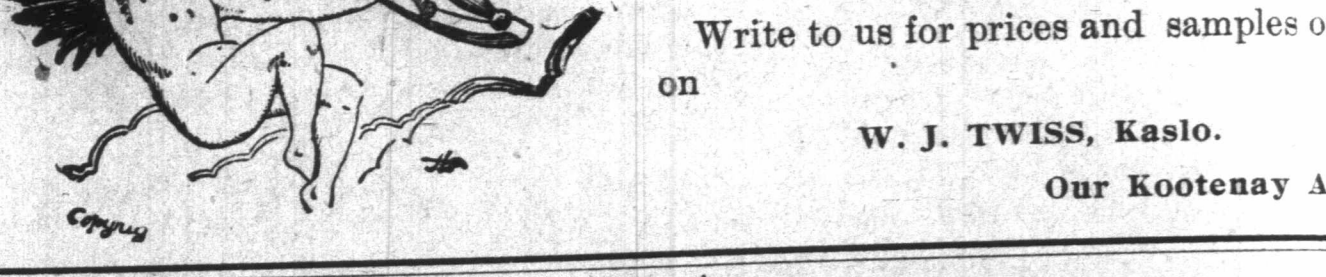
Established 1862.

WEILER BROS.

Furniture Manufacturers and Importers. Carpets, Curtains, Linoleums, Wall Paper, Crockery, Glassware, Cutlery, Lamps, Bar Goods, Complete House Furnishings.

Victoria, B. C. Largest stock west of Toronto. Hotels furnished complete at short notice. Counters, mirrors and complete bar outfit made to order. Bank and office fixtures, desks, etc.

Write to us for prices and samples or call on W. J. TWISS, Kaslo. Our Kootenay Agent.



BIGGEST SALE YET

Blackcock, on Quartz Creek, Bonded by Hall Exploration Company.

\$70,000 IS THE FIGURE

Owners Get a Cash Payment of \$3,000—Balance in Six and Twelve Months—Shaft Shows Eleven Feet of High Grade Ore.

It is a well known fact that nearly all the best locations in Trail Creek were staked by French Canadians. The Le Roi, War Eagle, Centre Star, Idaho, Iron Mask, Virginia, Enterprise, Monte Cristo, Iron Horse, Homestake, Lily May and dozens of others were owned in the first instance by natives of Quebec, who have all made comfortable fortunes from their discoveries.

Julien and Audet staked the claim August 1, 1896. They did a little work on the claim that fall, enough to satisfy themselves that they had discovered a good thing. This spring they resumed work on it and now have a shaft sunk 30 feet on the foot wall of the ledge. This shows 11 feet of ore which assays from \$80 to \$87 in gold, about 12 ounces in silver and 18 per cent in lead. No hanging wall is yet in sight, and it is purely a matter of conjecture how wide the vein is. The ore is galena in a quartz matrix carrying a little copper and a fair percentage of iron in the form of pyrrhotite.

The claim is located about 1,500 feet north of Wild Horse creek, and about six miles from the junction of that creek with Salmon river. Though comparatively little work has been done on the claim yet the ledge has been traced throughout its entire length, and a small prospecting shaft, showing neither wall, has been sunk to a depth of about five feet at a point about 250 feet from the discovery shaft. At this point the showing of ore is just as good as at the discovery. The ore is of the same character and assays equally well.

Under the terms of the bond, which is signed by H. E. Crossdale on behalf of the Hall Exploration company, work is to be begun on the claim at once with a big force of men and continued without cessation until the property is paid for in full. The owners received \$3,000 in cash, and are to get \$35,000 on November 1, 1897, and the balance, \$32,000, on June 1, 1898.

The property was examined for the purchasers by a mining engineer and expert employed by Mr. Crossdale, whose name could not be learned. The owners retain some promising holdings in the same neighborhood.

TWO FEET OF FINE GALENA

Strike Made in the Argo Adjoining the Town of Sandon.

Property Was Only Recently Acquired by the Present Owners—Postoffice Business Necessitates Changes.

SANDON, June 3.—[Special.]—Those who have conjectured that the Argo and Beet claims, which last week became the property of Leighton & Williams, of this place, would prove to be a splendid property, are in a fair way to realize the truth of their prognostications. Your correspondent visited this property yesterday, and upon being conducted through their tunnel, which is now in 145 feet, was shown a two-foot vein of almost solid galena, which had been found the evening previous. The ore is of the highest quality and there is plenty of it. It is easily mined, as the claims are right on the railway track. The recent purchasers are justly jubilant over their good fortune.

Another property that has a fair future is the Heather Belle group, viz: South Star, Atlanta, Atchison Fraction on Lou Beckwith, of Cleveland, in two rounds.

INTERNATIONAL NAVIGATION & TRADING COMPANY, Ltd.

Stra. International and Alberta. ON KOOTENAY LAKE AND RIVER. Time Card in effect May 15, 1897. Subject to change without notice.

Five-Mile Point connection with all passenger trains of N. P. R. to and from Northport, Rossland and Spokane. Tickets sold and baggage checked to all U. S. points.

Leave Kaslo for Nelson and way points, daily except Sunday, 5:30 a. m. Leave Kaslo for Portland, etc., Mon., 12:30 p. m. Leave Kaslo for Kootenay Lake, etc., Tues., 5:00 p. m. Leave Kaslo for Kootenay Lake, etc., Wed., Thurs., Fri., Sat., 8:30 a. m. Leave Kaslo for Kootenay Lake, etc., Sun., 10:00 a. m.

Leave Kaslo for Kootenay Lake, etc., Mon., 11:00 a. m. Leave Kaslo for Kootenay Lake, etc., Tues., 1:30 p. m. Leave Kaslo for Kootenay Lake, etc., Wed., Thurs., Fri., Sat., 5:00 p. m. Leave Kaslo for Kootenay Lake, etc., Sun., 10:00 p. m.

Close connection at Bonner's Ferry with trail car bound for Spokane 7:00 a. m., and west bound, arriving Spokane 7:00 p. m. GEO. C. REKXANDER, Gen'l Mgr. Kaslo, May 15, 1897.

FORTY-NINE

A Dozen Rossland B Staked Over 200

RICH REFEREN

It Has Continuous With High Grade Lower and Royal Gets Found in Hy

As an instance of the prospectors are going possession of all that Harkness, who is down trip after supplies, is one of a party which April to prospect in the son. There are about the party altogether, Ben Leech, Eric Harfield and Hugh and Leech had been ex creek in the fall of '96. Referendum group ar vice that the boys spring as soon as the Since going in there owned in from creek. Most of the boys and Mr. has got some good pr "We are doing as present," said Mr. claims staked last fa that job is completed good trail to the Ko claims are from two creek, and about see from Nelson. Most of the na ploration, stripping a ledge. Ben Leech shaft on the Referen about eight feet, and white quartz. This through averages from four to Some of the rock s assays of rock show have run from creek is the Mayflower an in which I am inter adjoin one another a west of the Referen 10 feet west of the shaft on the surface. It one or two places, a surface rock, where posed by the creek. The shaft on the creek is the Mayflower an in which I am inter adjoin one another a west of the Referen 10 feet west of the shaft on the surface. It one or two places, a surface rock, where posed by the creek. The shaft on the creek is the Mayflower an in which I am inter adjoin one another a west of the Referen 10 feet west of the shaft on the surface. It one or two places, a surface rock, where posed by the creek.

O. R. & N.

SHORTEST AND QUICKEST ROUTE TO

Coeur d'Alene Mines, Palouse, Lewiston, Walla Walla, Baker City mines, Portland, San Francisco, Cripple Creek gold mines and all points east and south. Only line east via Salt Lake and Denver.

Steamship tickets to Europe and other foreign countries.

Table with columns for LEAVE, SPOKANE TIME SCHEDULE, and ARRIVE. Includes routes to Portland, San Francisco, etc.

For through tickets and further information apply to O. R. & N. Co.'s office. 504 Riverside Ave., Spokane, Wash. J. CAMPBELL, Gen. Agt. 30 East Columbia Ave., Rossland, B. C. H. M. ADAMS, Trav. F. & P. Agt. W. H. HURLBURT, Gen. Pass. Agt. Portland, Ore.

Fort Steele Mining Camp

NELSON AND LARDO STEAM NAVIGATION CO.

Comencing Monday, May 10, 1897, steamer Ainsworth will leave Kaslo, B. C., every Monday and Thursday at 9:00 a. m. for Bonner's Ferry, Idaho, connecting with Great Northern railway on Tuesdays and Fridays, both to and from Spokane and Eastern and Western points.

Steamer will return from Bonner's Ferry at 4:00 a. m. on Wednesdays and Saturdays, arriving at Kaslo every evening, so as to make quick connections with Trail Creek and Slocan mining districts.

This route is the most direct for the Fort Steele mining camp, and makes close connection at Bonner's Ferry with the Upper Kootenay river steamers.

First-class passenger and freight accommodation.

Direct Route to... THE LA... Its Mill Turned... Vancouver, Ju... month of May... the Lanark mi... wet camp, ow... Fraser River and... company, ran o... having been... the mill treated a... and produced 490... the gross value... Vancouver to the... Lead company o... output during M... than that of any... increased. A sh... the 480 foot level... and an electric h... mine is now high...

City Labo... About 40 Wer... -Wages Will... About 40 of t... city were discha... will be taken o... was done to giv... obtaining work... It has also be... wages of labor... \$3.00 to \$2.50 p... of work has sta... first, but after... cluded it was t... the interests of... themselves.

Nelson, June... then, better kn... or Kenjo Jack... Kootenay, on l... night and was c... tiner in Nels... fighter.

WON TWO STRAIGHT

Sunday's Game Went to the Home Team by a Score of 16 to 3.

VISITORS WERE RATTLED

In the Fifth and Sixth Innings Rosslund Filed Up Fourteen Runs—First Three and Last Two Were Errors on Both Sides.

Sunday afternoon 600 spectators crowded the grand stand and bleachers at the Black Bear athletic grounds to witness McCallum's leaguers defeat Borchers' tyrlers by a score of 16 to 3.

It was Rosslund's turn to win, and they did, by playing National league ball throughout, and hitting Borchers unmercifully in the fifth and sixth innings. Baker who pitched for the home team proved a puzzle to the Kaslo boys, who tried hard to redeem themselves for Saturday's defeat, but the hoodoo was on them this trip.

Al Gibson, Spokane's old reliable first baseman, proved a tower of strength to the home team and played his old time game. Marshall and Arneson were again the favorites and played pretty ball, doing yeoman work at the bat and each scoring three runs. The out-field had their eyes open and covered their territory well, but few balls went to them.

For the Kaslo's Rankin, Davey and Drenner showed up well. "Triby" seemed to cover the whole field, and made six beautiful catches in the centre field. Pitcher Borchers lacked speed, and was replaced in the box by Green in the seventh, who prevented the home team from swelling their score very materially.

The Official Score.

Table with columns: Team, AB, R, H, SH, PO, A, E. Rows for Rosslund and Kaslo.

Table with columns: Player, AB, R, H, SH, PO, A, E. Rows for individual players.

Both teams played good ball, as the following official score will show:

ROSSSLUND—AB, R, H, SH, PO, A, E. Arneson, 7, 3, 2, 0, 2, 2, 0. Caverly, 5, 2, 4, 0, 1, 1, 0. Marshall, 3, 2, 4, 0, 0, 1, 0. Sullivan, 4, 2, 3, 0, 0, 0, 0. Gay, 4, 1, 1, 0, 0, 0, 0. Holland, 3, 1, 1, 0, 6, 0, 0. Gibson, 4, 2, 2, 0, 10, 3, 0. McKinnon, 4, 1, 2, 0, 1, 5, 0. Baker, 4, 1, 2, 0, 1, 5, 0. Totals, 45, 16, 21, 0, 27, 12, 0.

KASLO—AB, R, H, SH, PO, A, E. Davey, 4, 0, 2, 0, 2, 1, 0. Rankin, 4, 1, 1, 0, 1, 1, 0. Clark, 3, 0, 0, 0, 2, 3, 2. Green, 3, 0, 1, 0, 0, 3, 0. Borchers, 4, 0, 1, 0, 0, 3, 0. Drenner, 4, 0, 1, 0, 0, 3, 0. Coffman, 4, 0, 2, 0, 9, 0, 1. Desmond, 3, 0, 2, 0, 0, 0, 0. Bidwell, 2, 0, 2, 0, 0, 0, 0. Nash, 4, 0, 1, 0, 0, 0, 0. Totals, 34, 3, 11, 0, 27, 12, 5.

Innings—1, 2, 3, 4, 5, 6, 7, 8, 9. Rosslund, 0, 0, 1, 6, 8, 1, 0, 0, 16. Kaslo, 0, 0, 0, 1, 2, 0, 0, 0, 3. Two-base—Holland, Arneson, Caverly, Gibson, McKinnon. Stolen bases—Marshall, 3; Caverly, 2; Sullivan, 1; Rankin, 1; Gay, 1; Coffman, 1. Hits made off—Borchers, 19; Green, 1; Baker, 11. Left on bases—Kaslo, 4; Rosslund, 3. Double and triple plays—Marshall to Gibson. Bases on called balls—Borchers, 5; Borchers, 2. Bases from being hit by balls—Off Baker, 2. Reached first by fielding errors—Rosslund, 3; Kaslo, 2. Struck out—By Borchers, 3; by Baker, 3; by Green, 1. Passed balls—Davey. Time of game—One hour and 45 minutes. Umpire—D. A. Binnard. Official scorer—W. Fagan.

The delay in starting the game was owing to the fact that Kaslo protested against Smith for umpire and wanted to wait for Ballinger of the Trails to arrive, but not being notified in time he found it impossible to act. Kaslo then had the choice for umpire and requested D. A. Binnard to act, Manager McCallum agreeing to the selection.

Umpire Binnard had a difficult and thankless duty to perform, and had to make two questionable decisions to make both of which were decided in the home team's favor. This caused the Kaslos to register a kick at the time, and a little bitter feeling was shown, which was afterwards set right.

Kaslo Boys' Records. The official score for Saturday's game was incorrect in a few details and does some injustice to the Kaslo players. The column of base hits has been corrected as follows: Davey, 2; Rankin, 0; Green, 4; Clarke, 2; Borchers, 2; Drenner, 4; Coffman, 2; Bidwell, 0; Nash, 0. This makes a total of 16 against 11 as at first reported.

SPOKANE DEFEATED. Kaslo Gave the Washington Team Its First Beating Last Tuesday. SPOKANE, Wash., June 8.—[Special.]—The Spokanes went down to their first defeat today at the hands of the Kaslo team, the visitors winning after the most interesting game of the season by a score of 15 to 12.

Kaslo bunched their hits in the first three innings, gaining a good safe lead. In the eighth inning Spokane began to gauge Coffman's delivery, and before it was over five hits had been made, netting seven runs. Manager Borchers' play for time in this inning to give Coffman a rest, saved the game for the visitors, as he was about knocked out of the box, while Spokane had bases full with only two men out. A strike out retired the side, and this was the last time the locals scored. Spokane was credited with seven errors, all of them costly. Kaslo had five. Coffman and Davie were in points for Kaslo, and Bush and Connors for Spokane.

The score by innings was as follows: Spokane, 0, 1, 3, 0, 0, 1, 7, 0, 15. Kaslo, 0, 0, 0, 0, 1, 2, 0, 0, 12. KASLO WON AGAIN. Excepting One Inning Yesterday's Game Was About Errorless. SPOKANE, Wash., June 9.—[Special.]—Kaslo again defeated the Spokane team today in one of the best games ever played at the local ball park, and that is saying a great deal. For six innings the game was a pitchers' battle, and was played without an error on either side with only a total of six hits made. At that time the score was three to nothing in favor of Spokane. In the seventh Coffman came to bat and made a double bagger. Three infield errors in rapid succession followed by a three base hit by Green and a two bagger by Borchers realized a total of five runs for the visitors and won them the game. After the third innings the Spokane players were retired in one, two, three order for four innings, and only two men reached first in the remaining two innings. Borchers pitched in his oldtime form,

and was supported without an error. Only five scattering hits were made off his delivery. Murdock also pitched winning ball for Spokane, and but for the errors in the seventh, one of which he made himself, the game would have resulted in a shutout for Kaslo. He was found for several hits, three of which were made in the fatal seventh. A crowd of fully 600 people shouted themselves hoarse over the game.

Table with columns: Team, Played, Won, Lost, Per Cent. Rows for Spokane, Kaslo, Rosslund.

Telephone Line to Spokane. The telephone line between Spokane and Rosslund opened at 1:30 yesterday afternoon, when through connection between the two cities was made. Conversation was carried on over the wire last evening. The line will be open for the use of the public Monday next.

MINES NEAR GREENWOOD

Valuable Blind Lead Found on the Golden Crown.

Progress of Work on the Best Known Properties—No. 7 Estimated to Have \$850,000 in Sight.

ANACONDA, June 3.—[Special.]—Gradually the Boundary creek camps are settling down to the season's work. Conspicuous among the companies doing good work are the Brandon and Golden Crown Mining company, of Rosslund; the Prospecting Syndicate of British Columbia, of Vancouver, and the Boundary Mines company, of New York. The Brandon and Golden Crown company is meeting with success on its Golden Crown claim in Wellington camp. With four known leads to prospect for, when it commenced operations last month its future appeared promising enough. But now it seems brighter for a valuable blind lead has been discovered, a surface crosscut disclosing the presence of a big body of good grade ore.

The tunnel now being run to cut the four other leads is fast approaching the 400-foot mark. It is still in country rock, but the first of the leads will soon be met with. The property is much in favor in the district, and it is confidently anticipated that it will come up to the most sanguine expectations.

Leslie Hill's Company. The Prospecting Syndicate of British Columbia is developing the Jewel and Denoro Grande claims in Long Lake camp, but in the temporary absence of the manager, Mr. Leslie Hill, C. E., authentic information as to results is not just now obtainable. It is understood, though, that the drifts at the 120-foot level are yielding pay ore in satisfactory quantities.

The same company is prospecting the Crown Point group, on James' creek, about seven miles below the junction of Rock creek, with the main Kettle river. Assessment work has been completed on No. 2 and No. 3 claims, and a 50-foot shaft is being sunk in a big body of ore occurring on the Crown Point claim. This shaft is now down about 25 feet, and it is reported that the ore, already returning high values nearer the surface, is improving with depth.

No. 7 and Mother Lode. The gratifying intelligence was received a day or two ago that ore had been met with in the upper workings of the No. 7 in Central camp. This mine and the Mother Lode in Deadwood camp are properties which have been steadily and effectively worked by the Boundary Mines company, of New York, right along since last summer, excepting that latterly there has been a temporary suspension on the Mother Lode pending a decision as to future operations.

The No. 7 was bonded by Col. John Weir, of New York, in May, 1896, and it was afterwards transferred to the above-mentioned company, which is organized for the purpose of mining in this province. The company has spent \$3,000 in development work on the No. 7, and the bond and attendant expenses called for \$13,800, the final instalment (4,000) of which will shortly become payable, and will without doubt, be paid. The main shaft on the No. 7 is 339 feet deep, and at that depth about 450 feet of drifting and crosscutting has been done, with the result that the ore body has been proved to average about 2 feet 3 inches in width at the lowest level yet opened. On the surface the ledge has been stripped at intervals for 700 feet.

A conservative estimate, carefully made and based upon an average of a great many assays and of the width of the lode as disclosed by extensive drifting at the 139-foot level, places the value of the ore contained within the 700 feet already substantially developed at \$850,000. This week's discovery may lead to a material increase being made in this estimate, which now embraces only the 700 feet, a break in the ore chute having occurred at that distance along the ledge. Should the new find, which was made in a crosscut from the bottom of a 40 foot shaft, prove the presence of similar ore to that known to occur below the break, the value of the mine will be greatly enhanced. Developments are now being awaited with much interest.

Operations were resumed at the Mother Lode last week, two 10-hour shifts having been put on to sink a winze from the floor of the main tunnel in the big body of ore that exists there.

The Goconda Group. Last month J. C. Haas, M. E., who owns a group of three claims situate in the Smith's camp, commenced work on the Goconda, after which claim the group is named. The ledge was first stripped for a distance of more than 300 feet. A shaft was then sunk, all in ledge matter, with some good ore down to about 25 feet. Thereafter for 20 feet no values were met with, but now pay ore is coming in again, and water is becoming troublesome.

At about 200 feet north of this shaft an open cut across the ledge gave ore which assayed up to \$35.13 in gold here, and at 10 feet in depth the pay ore which is arsenical and copper pyrites had widened to three feet. The water came in so strong from the vein at that depth that no heading could be made with only a windlass and bucket for

Ingersoll = Sergeant Drill Dep't.

Main Office and Works, MONTREAL P. Q.

Air Compressors, Rock Drills, Link Motion and Friction Hoisting and Winding Engines, Boilers, Sinking and Feed Pumps. GATES ROCK BREAKERS AND ROLLS. Duplicate Parts Carried in Stock. For Particulars and Estimates Write to or Call on

JAMES D. SWORD, Manager, Rosslund Branch.

DOMINION W RE ROPE CO., Ltd.,

299 St. James St., Montreal, Que.

BLEICHERT TRAMWAYS

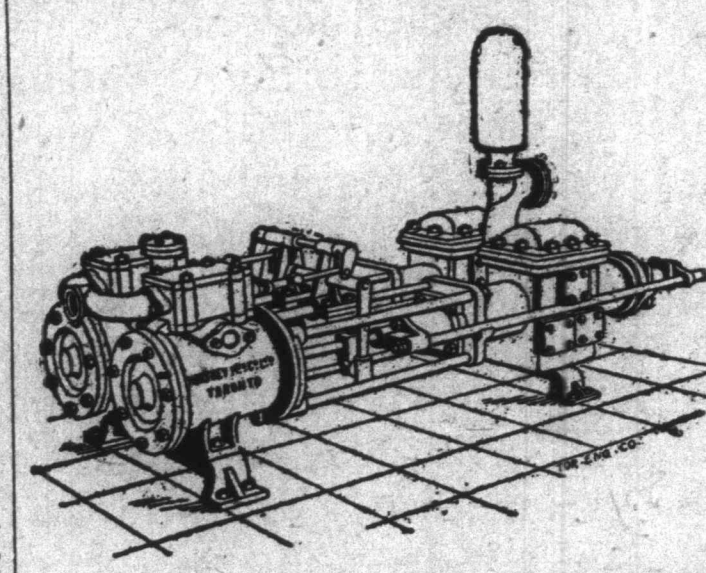
Manufacturers of

Standard Hoisting, Mining, Tramway, Ferry and Guy Ropes.

"Langs" Underground Haulage and Slope Ropes.

JAMES D. SWORD, Agent, Rosslund.

Catalogue and Estimates on Application.



NORTHEY PUMP CO., Ltd., Toronto.

Manufacturers of

Every Description of PUMPS.

Mining Pumps a Specialty.

Write for Prices.

JAMES D. SWORD, Agent, Rosslund

The Salmo Consolidated Gold Mining and Development Co.

Limited Liability.

Head Office: 43 Columbia Ave., Rosslund, B. C.

A few questions frequently asked by the cautious investor before putting his money in a mining enterprise:

- Q. 1. Are the men at the wheel practical men, or placed there for ornament?
A. The directors of the Salmo are a body of practical mining men, of well-known repute, the superintendent a miner of 24 years' experience.
Q. 2. Are these properties undeveloped claims, or, in other words, wild-cats?
A. The group of four properties of the Salmo are being actively worked, and the development so far has been actually phenomenal, the pay streak increasing from 4 inches at the top to 2 feet 2 inches at a depth of six feet, of solid galena ore. Six samples taken indiscriminately from the dump, on being assayed, yielded values averaging \$35.00 in silver and lead.
Q. 3. How am I protected in my investment from promoters' stock being thrown on the market, to the detriment of the treasury stock?
A. All stock other than treasury is strictly tied up, until the company's properties are on a dividend-paying basis; no certificates, even, are issued to holders of such stock, but only interim receipts, which are absolutely untransferable.
The directors having issued a block of 25,000 shares of treasury at 7 1/2 cents, fully paid and non-assessable, we have full confidence in recommending the same to the public as a safe and lucrative investment.

M. E. DEMPSTER & CO.

OFFICIAL BROKERS. 43 Columbia Ave., Rosslund, B. C.

HOISTING MACHINERY.

The Lidgerwood, over 300 styles and sizes. Colorado Double Friction. Bolthoff Lightning Quadruple Friction. Direct Acting Hoists, Corliss Cylinders.

OUR LATEST—Bolthoff Combined Noiseless Gear and Friction.

Hendrie & Bolthoff Manufacturing Co., Denver, Colo.

Dodge Patent Wood Split Pulleys.

Dodge Friction Clutch Pulleys. Clutch Couplings. Shafting, Hangers, and Power Transmission for Mining Plants.

Dodge Wood Split Pulley Co., Toronto, Ont.

Agents, JOHN BOYD & CO., Vancouver, B. C.

All Sizes of Dodge Pulleys in Stock.

CONCENTRATORS,

ROLLS, CRUSHERS,

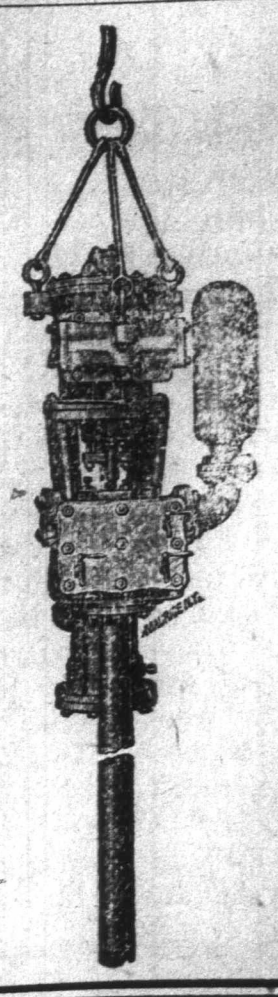
WANNERS

General Mining Machinery and Supplies

A LARGE STOCK.

Jenckes Machine Comp'y.

F. R. MENDENHALL,



STAMP MILLS,

COMPRESSORS, DRILLS,

Hoists, Engines, Boilers,

MINE PUMPS, CARS,

BUCKETS and ROPE

ON HAND. Ask for Estimates.

Canadian Rand Drill Co.

Rosslund, Agent.

Calumet and Hecla's Dividends.

Boston, Mass., June 9.—The directors of the Calumet and Hecla Mining company have declared an extra dividend of \$5 per share and made the same payable, July 7, to the stockholders on record June 11. The last previous dividend was \$5 and was paid April 23. The total payments thus far this calendar year have been \$30 per share as against \$25 for the corresponding period last year. The two declarations call for \$1,000,000 and bring the company's aggregate dividend disbursements up to \$49,850,000.

Metal Quotations.

NEW YORK, June 9.—Bar silver, 60c; Mexican dollars, 47 1/2c.
London, 47 1/2c.
Gold—Standard, 155; Mexican, 155; Indian, 155; all others, 155.
Silver—Standard, 75; Mexican, 75; Indian, 75; all others, 75.
Copper—Standard, 15; Mexican, 15; Indian, 15; all others, 15.
Tin—Standard, 15; Mexican, 15; Indian, 15; all others, 15.
Zinc—Standard, 15; Mexican, 15; Indian, 15; all others, 15.
Lead—Standard, 15; Mexican, 15; Indian, 15; all others, 15.
Iron—Standard, 15; Mexican, 15; Indian, 15; all others, 15.
Steel—Standard, 15; Mexican, 15; Indian, 15; all others, 15.
Coal—Standard, 15; Mexican, 15; Indian, 15; all others, 15.
Wheat—Standard, 15; Mexican, 15; Indian, 15; all others, 15.
Corn—Standard, 15; Mexican, 15; Indian, 15; all others, 15.
Cotton—Standard, 15; Mexican, 15; Indian, 15; all others, 15.
Sugar—Standard, 15; Mexican, 15; Indian, 15; all others, 15.
Rice—Standard, 15; Mexican, 15; Indian, 15; all others, 15.
Wool—Standard, 15; Mexican, 15; Indian, 15; all others, 15.
Hides—Standard, 15; Mexican, 15; Indian, 15; all others, 15.
Tallow—Standard, 15; Mexican, 15; Indian, 15; all others, 15.
Lard—Standard, 15; Mexican, 15; Indian, 15; all others, 15.
Flour—Standard, 15; Mexican, 15; Indian, 15; all others, 15.
Bacon—Standard, 15; Mexican, 15; Indian, 15; all others, 15.
Butter—Standard, 15; Mexican, 15; Indian, 15; all others, 15.
Eggs—Standard, 15; Mexican, 15; Indian, 15; all others, 15.
Beans—Standard, 15; Mexican, 15; Indian, 15; all others, 15.
Peas—Standard, 15; Mexican, 15; Indian, 15; all others, 15.
Lentils—Standard, 15; Mexican, 15; Indian, 15; all others, 15.
Oats—Standard, 15; Mexican, 15; Indian, 15; all others, 15.
Barley—Standard, 15; Mexican, 15; Indian, 15; all others, 15.
Rye—Standard, 15; Mexican, 15; Indian, 15; all others, 15.
Clover—Standard, 15; Mexican, 15; Indian, 15; all others, 15.
Hay—Standard, 15; Mexican, 15; Indian, 15; all others, 15.
Timothy—Standard, 15; Mexican, 15; Indian, 15; all others, 15.
Alfalfa—Standard, 15; Mexican, 15; Indian, 15; all others, 15.
Soybeans—Standard, 15; Mexican, 15; Indian, 15; all others, 15.
Flaxseed—Standard, 15; Mexican, 15; Indian, 15; all others, 15.
Mustardseed—Standard, 15; Mexican, 15; Indian, 15; all others, 15.
Sesameed—Standard, 15; Mexican, 15; Indian, 15; all others, 15.
Cottonseed—Standard, 15; Mexican, 15; Indian, 15; all others, 15.
Rapeseed—Standard, 15; Mexican, 15; Indian, 15; all others, 15.
Sunflowerseed—Standard, 15; Mexican, 15; Indian, 15; all others, 15.
Peanutseed—Standard, 15; Mexican, 15; Indian, 15; all others, 15.
Walnutseed—Standard, 15; Mexican, 15; Indian, 15; all others, 15.
Almondseed—Standard, 15; Mexican, 15; Indian, 15; all others, 15.
Cashewseed—Standard, 15; Mexican, 15; Indian, 15; all others, 15.
Pineapple—Standard, 15; Mexican, 15; Indian, 15; all others, 15.
Banana—Standard, 15; Mexican, 15; Indian, 15; all others, 15.
Mango—Standard, 15; Mexican, 15; Indian, 15; all others, 15.
Guava—Standard, 15; Mexican, 15; Indian, 15; all others, 15.
Lemon—Standard, 15; Mexican, 15; Indian, 15; all others, 15.
Orange—Standard, 15; Mexican, 15; Indian, 15; all others, 15.
Lime—Standard, 15; Mexican, 15; Indian, 15; all others, 15.
Grapefruit—Standard, 15; Mexican, 15; Indian, 15; all others, 15.
Pineapple—Standard, 15; Mexican, 15; Indian, 15; all others, 15.
Banana—Standard, 15; Mexican, 15; Indian, 15; all others, 15.
Mango—Standard, 15; Mexican, 15; Indian, 15; all others, 15.
Guava—Standard, 15; Mexican, 15; Indian, 15; all others, 15.
Lemon—Standard, 15; Mexican, 15; Indian, 15; all others, 15.
Orange—Standard, 15; Mexican, 15; Indian, 15; all others, 15.
Lime—Standard, 15; Mexican, 15; Indian, 15; all others, 15.
Grapefruit—Standard, 15; Mexican, 15; Indian, 15; all others, 15.

Enjoy your Out-of-door Sports

by wearing one of Shorey's Rigby Waterproof Bicycle or Golf suits. They admit the air but keep out the rain. The feeling, appearance or porous properties of ordinary tweed are not changed by Rigby. It simply renders goods repellent to water yet the cost is not increased.



Twelve Dollars Two Dollars R M D. Mc T Wa For The Ma Tramways Wi Catalogue

Dep't.

Engines, Boilers,
Parts Carried in

inch.

Ltd.,

ent, Rossland.

Toronto.

MUMPS.

Agent, Rossland

Development Co.

C.

Putting his money in

te, the superintendent a

nt so far has been actually

feet, of solid galena ore.

5,000 in silver and lead.

arket, to the detriment of

a dividend-paying basis;

ntely untransferable.

nd non-assessable, we have

CO.

Rossland, B. C.

ERY.

Double Friction.

Friction.

Friction.

Friction.

Friction.

Friction.

Friction.

Friction.

Friction.

Friction.

Friction.

Friction.

Friction.

Friction.

Friction.

Friction.

Friction.

Friction.

Friction.

Friction.

Friction.

Friction.

Two Dollars a Year.

ROSSLAND, B. C., THURSDAY, JUNE 10, 1897.

Third Year, Number 15.

Royal Gold Mining Co.,

Visit the mines and see the ore in the shaft and on the dump.

Work being carried on day and night.

Write the Secretary,

D. D. Birks, or
McMillan & Whitney

For Particulars or Stock at

Six Cents per Share.

THE ELISE

IS A SHIPPER.

Watch for Smelter Returns from the "Grass-Roots" Mine.

For Particulars Apply E. L. CLARK, Rossland.

The B. Greening Wire Co., Ltd.

HAMILTON, ONT.

Manufacturers of Best Brands of Crucible Cast Steel, Ropes for Hoisting, Mining, Tramways, etc. Best Crucible Cast Steel Wire Ropes carried in stock in Rossland. Wire Cloth, and Perforated Sheets of Steel, Brass and Copper for Mining Screens.

Catalogue on Application.

W. J. HERALD, M. E., Agent, Rossland.

DROWNED IN DUNCAN

Prospector Named Roome Added To the River's List of Victims.

ARGENTA TO HAUSER LAKE

Trail Badly In Need of Repair—Swedes Make Good Strikes on Glacier Creek and South Fork of Kaslo—Personal Mention.

KASLO, June 2.—[Special].—An unfortunate drowning accident is reported from the lower Duncan river, which resulted in the death of a man named Roome. Three prospectors were attempting the ascent of the river between Kootenay and Hauser lakes. At the present stage of water the current is very swift and the passage difficult. Roome was in the bow of the boat, and caught hold of an overhanging limb to pull the craft forward over a rapid. The limb had considerable spring, and while he still held to it, the boat passed from under him, and he was thrown into the swift current. Before his partners could get their boat into shape and pull back to him he was carried off and drowned. No trace of his body has been found. Roome was about 60 years of age, and as far as could be ascertained, hailed from Spokane. It is understood that the owners of the tug steamer Idaho, who had it in mind to make an attempt to take their steamer from Kootenay to Hauser lake, have abandoned the idea for the present. After an examination of the difficulties to be surmounted, it was deemed prudent not to attempt the ascent. There was not power sufficient, and the boat was scarcely in condition to endure the strain.

The bridge over Grizzly creek on the trail from the townsite of Argenta to the foot of Hauser lake, gave way on Monday while a pair of valuable horses belonging to G. O. Buchanan was crossing over. One of the horses was hauled out and brought down to Argenta, but the other had to be left behind. This trail is now much used by prospectors, and petitions have been sent to the proper quarter soliciting repairs, but no attention has been paid to them. Despairing of getting any assistance, prospectors have themselves gone to work to repair the trail, receiving the loan of a block and tackle from the Kootenay to aid them in the work of removing logs.

Discoveries on Glacier Creek.

Some very fine ore is shown from the surface croppings of claims recently located on Glacier creek, which empties into the Duncan river, a short distance below Hauser lake. Some of these claims are about four miles from the river, where two Swedes have located the Queen of the West and Little Johnny. Others have gone further up and located, but the ore from all seems to be alike, showing peacock copper. The lead is said to be from eighteen to twenty feet wide. John Howard, who, with his partner, Russell, located claims about seven miles up the creek, says the trip was an exceedingly arduous one, and risky.

Amongst the passengers by the Kootenay to the head of Kootenay lake on Monday, was a party of gentlemen who took a look over the townsite of Argenta, with a view, it is said, of purchasing the property. It is located on the east side, and is the point whence starts the trail for Hauser lake. Three or four years ago it was boomed as a rival of Lardo, and a number of lots was purchased at that time. The present rush to the Duncan river country makes it a point of some importance.

More Lucky Swedes.

Two recent locations on the south fork of Kaslo creek, about four miles above the well known Silver Bell, are said to show richer indications of value than any hitherto located on the same stream. These also are in the hands of two Swedes, Charles Bellestrom and Ben Peterson.

Major Montgomery, president and manager of the Washington Mining company, left for Spokane this morning where he will meet the directors of his company and report upon operations at the mine.

A. F. McClaine, of Tacoma, and A. L. McClaine, of Spokane, vice-president and secretary respectively of the Dardanelles Mining and Milling company, arrived in the city on Monday evening. They will visit the property and with their engineer decide upon the placing of the new machinery for the mine. A. L. McClaine is also secretary of the Kootenay-Washington ball league.

Byron N. White, manager of the Slocan Star, arrived in Kaslo on Monday evening after an absence of several months, during which he visited the mining districts of western Ontario. He says the conditions there are so dissimilar to those of the Slocan that it is quite impracticable to make a comparison between the two districts. A few of the Ontario mines, like the Sultans, may be paying propositions in a small way, but, upon the whole, he did not seem to be so favorably impressed as to be induced to give up his holdings in the Slocan Star.

RAILROAD TO RAINY RIVER.

Dominion Government Has Given a Substantial Bonus to the Road.

TORONTO, Ont., June 3.—The Globe's Ottawa correspondent says: It is understood that a bonus of \$6,400 per mile will be granted the Rainy River railway to be built from 22 miles west of Port Arthur, Ontario, to a point 165 miles distant on Rainy lake. The railway has already been subsidized by the Ontario legislature as a colonization road, and the Dominion bonus will enable the promoters to commence operations at once.

PALMER MOUNTAIN TUNNEL.

It Is Now In 325 Feet—New Compressor Expected Daily.

SPOKANE, Wash., June 3.—[Special].—Work on the great Palmer mountain tunnel, the result of which will be to make, or mar, for a long time at least, this mineral belt, is progressing without intermission day and night and at this time is about 325 feet in and a better job of tunnelling cannot be found in any camp on the coast. The face of the tunnel is seven by eight feet and 450 feet of massive timbers are in place, insuring safety to those laboring under ground. The bottom is planked with two inch timbers, making a sidewalk as smooth and even as that of a city.

At present the workmen are in very hard diorite, carrying some mineral, although it is not expected ore will be struck for several hundred feet yet. John Boyd, who has charge of the work, is making extensive preparations to push work faster than ever this summer. Orders have been placed with eastern manufacturers for an Ingersoll-Sargent compressor with three 3 1/2 drills. The compressor, together with a sixty horse-power boiler, is expected to arrive any day and will be immediately put in place. At present steam will be used but the intention is to use water power at some time in the future.

NEW TOWNSITE IN SLOCAN

North Fork of Carpenter Creek to Have a Wagon Road Shortly.

Owners of Dollie Varden Group Talking of a Concentrator—Ajax Has Begun Shipping Again.

SANDON, June 1.—[Special].—Engineers are engaged in surveying a new townsite on the west fork of the North Fork of Carpenter creek, five miles from Three Forks. The site is said to be an excellent one and a number of good claims are situated in close proximity, which will be developed. Among them is the Dollie Varden group, which is now being opened up as rapidly as possible. If the good showing it is now making continues, it is said a concentrator will be built during the summer. A survey will also be made for a wagon road to the new town within a short time and work will be commenced upon it as soon as the survey has been made.

The Ajax mine has commenced shipping ore, and will hereafter be heard from regularly. About a ton and a half of ore is being packed to the mine daily, which will be increased within a short time. This property, situated close to the Noble Five group, is proving all that its owners expected and more.

The building boom which struck Sandon with great force early in the spring, continues unabated. Eight new business buildings are now under construction, besides a large number of small dwellings. Most of these buildings are very substantial structures, as are, indeed, all the buildings erected here within the past two years. A large tent has been pitched near the Kaslo & Slocan Railway depot, in which services are being held regularly each evening. As yet, not much interest has been aroused in the meetings, although they have been fairly well attended.

WOOD SCHEDULE REACHED.

Senate Amended First Clause by Raising the Duty 25 per Cent.

WASHINGTON, D. C., June 4.—The senate had a period of speech making today and as a result little progress was made on the tariff bill. The advance covered about two pages or seven paragraphs and brought the senate up to the wood schedule, the first item of which was considered but not completed.

On paragraph 102 covering timber, hewn, sided or squared, or round timber used for spars or in building, wharves, Mr. Allison moved a committee amendment increasing the rate from 1 cent to 1 1/2 cents per cubic foot. Mr. Gray answered that the millionaire owners of timber lands were not mendicants and there was no reason why they should receive a toll wrung from the American home builders. He protested against the destruction of our own forests, particularly our white pine. Mr. Allison's amendment was agreed to.

BUSINESS FLAT IN THE EAST.

John A. Finch Says There is Nothing Doing—Spokane's Fruit Fair.

SPOKANE, Wash., June 3.—[Special].—John A. Finch and wife returned last night over the Northern Pacific from a visit of several weeks in the east. Speaking of business and financial conditions everywhere he had been, he said that there was just one word that expressed it. "It is flat every place. There is nothing doing."

Mr. Finch is president of the Fruit Fair association, and the association has been waiting for his return in order to begin preparations for the next fair. Work will be begun now without delay. A meeting of the association and business men will be called in a few days to discuss the matter and agree upon and arrange plans for the work. The most important factor is finances, but there is no fear of any handicap from that source.

Turned Loose on Kootenay.

SPOKANE, Wash., June 4.—[Special].—The police today rounded up 19 of the hoboes driven out of Montana, who arrived at the eastern limits of the city during the morning. They were taken to the station and later escorted to the northern limits of the city and told to move on. The gang said they were going to British Columbia. Others of the gang have already been run out of the city. Some have not yet reached Spokane.

STRIKE ON THE FERN

Rich Free Gold Ore Found Below the Lower Tunnel.

STAMP MILL TO BE BUILT

Wagon Road Is Being Arranged For—Good Gold-Copper Ore in the Annie May—Copper Claim Shows Twelve Feet of Good Ore.

NELSON, June 2.—[Special].—According to reports and to specimens exhibited a wonderful strike has been made on the Fern mine 150 below the lower adit. Work has uncovered about eight feet of decomposed quartz that is literally sparkling with free gold and makes a most magnificent showing. Assays on the higher levels have gone \$305 in gold, but the specimens brought in today will show fabulous results.

Just how large a body exists is a matter of conjecture, but, to say the least, it is very pretty while it lasts. The company at present is making arrangements to put in a 20-stamp mill and will build a wagon road.

Annie May in Luck, Too.

A strike of free gold has been made on the Annie May on Forty-nine creek, owned by W. G. Robinson and S. Johns. It is the extension of the Majestic and has a well defined vein three feet in width which lies between walls of black mica. The ore is copper ore, which is said to run high in gold. The discovery was made during the progress of assessment work and the mine owners will now commence development in earnest.

Copper Claim Looks Well.

Development work is showing up the Copper Claim in good shape, and assays obtained today from rock near the surface give a result of \$22.45 in gold and copper. The ledge is a strong one and extends through the extensions, the Copper Age and King Copper. The claim is located on the north side of Kootenay river, about seven miles from Nelson. The ledge has been uncovered for 12 feet and still the width has not been determined. The mines nearly adjoin the famous Queen Victoria, which probably has the largest copper lead in Kootenay.

There is considerable talk of a smelter at this point, and some close investigations have been carried on to see if the quantity and character of the ore will justify it.

SILVERTON NEWS NOTES.

Mines on Four Mile Creek—Wakfield the Next New Shipper.

SILVERTON, June 1.—[Special].—Bill Lewis, an oldtimer, is to take charge of the Vancouver group this week. Leslie Hill, manager of the Vancouver group, is expected here daily, and \$30,000 is to be expended on the Vancouver this season by the London, Eng. owners.

An important strike has been made on the Cliff, which adjoins the Standard. A body of clean ore, six inches in width, has been uncovered for 30 feet, showing high values.

The Wakfield silver mine will make its first shipment of ore next week.

The new tunnel on the Thompson group has struck ore, showing from 135 to 180 ounces in silver.

Silvertown is having a steady growth without the evil of booming. New residents are coming in daily, but are much hampered by the necessity of waiting for building material.

MINNES STILL DISSATISFIED.

Thinks C. F. R. Got Too Good a Bargain in Crow's Nest Deal.

OTTAWA, Ont., June 4.—There is a strong probability that if the government announcement on the Crow's Nest Pass be made in the commons the first of next week, as expected, it will cause a discussion of several days duration. The opposition will do their utmost to find ground for criticism.

There is one member who adheres to the stand which he announced in parliament some weeks ago. This is young McEnnis, of Vancouver, who thinks that the Canadian Pacific railway gets too big a bargain, and his opinion is based on statements which were made by him on the floor of parliament when he asked for federal disallowance of the British Columbia Southern railway's charter, granted by the provincial authorities.

Members of Laurier's Staff.

OTTAWA, Ont., June 4.—Lieut.-Col. Domville, Messrs. Tucker, Prior and Tyrwhitt, M. P.'s, left this afternoon for New York, where they will join the premier and sail on board the Lucania tomorrow for the old country to act on his staff. Senator Bouton, who is the only military gentleman from the upper house on the staff, also left today.

Monita Resumes Work.

The Monita company held a special meeting Friday to arrange for resuming work in the mine. It was decided to move the machinery to the old Pilgrim shaft near the west end of the War Eagle and continue the sinking of the shaft to the 200-foot level, it now being down 62 feet. This will give a depth equal to the No. 3 level on the War Eagle. The work of moving the machinery will be begun today.

To Open Up Slocan Mines.

SPOKANE, Wash., June 4.—[Special].—D. C. Clark left for Slocan this morning to start development work on the Ophir and Vermilion claims, in which he is a large owner.

Almighty Voice's Victims Progressing.

WEST PRINCE ALBERT, Sask., June 4.—Captain Allen, Sergeant Raven and Scout Venne are all progressing favorably.

Weekly Rossland Miner.

Published Every Thursday by the ROSSLAND MINER PRINTING & PUBLISHING CO. LIMITED (LIMITED LIABILITY).

THE SUBSCRIPTION PRICE OF THE WEEKLY ROSSLAND MINER for all points in the United States and Canada is Two Dollars a year or One Dollar and Twenty-five Cents for six months.

PROMPT ACTION NEEDED.

THE MINER'S dispatches from Spokane for several days past have contained numerous references to a horde of hoboes and crooks which has been making its way west from Montana, out of which its members were driven by the organizations of vigilantes formed in Butte, Helena and the other towns they have been infesting for the past few years.

These hoboes and crooks are purely an American product. There is no class like them in any other country under the sun. They live by predatory methods and are always ready to undertake any criminal action provided they can see any chance of booty and a prospect of escaping with it.

In Spokane they and their fellows have inaugurated a veritable reign of terror, and holdups, robberies and murderous assaults have been nightly occurrences for a long time past.

These hoboes made their way west and are now pursuing it to Kootenay in the approved hobo fashion. They stole trains, defied railroad hands and terrorized farmers and others living alone.

We protest against such action. These hoboes are not the product of Canada and are the most detrimental immigrants with which the province has ever been threatened.

What will be the result? Smelting can and will be done even more cheaply on the Columbia river and common points within British Columbia than on the other side of the line.

What is the reason we cannot have a daily mail to and from the north as well as to and from the south? This is one of those things that nobody, unless it be a government official, can understand.

Companies with extra-provincial charters, but having their head offices in Ontario, will be able to sell their stock as heretofore. Of this class are a large number of development companies.

What is the meaning of it? The distance from Lethbridge to Nelson, as the Crow's Nest Pass road will have to be built, is about 300 miles.

Spokane's City Council Asked to Assist a Brave and Worthy Officer. SPOKANE, Wash., June 4.—[Special.]—A petition to the city council was filed with the city clerk today, asking that an appropriation be made to defray the expenses of Detective McPhee for a trip east in search of medical treatment.

THE MEANING OF IT. The distance from Lethbridge to Nelson, as the Crow's Nest Pass road will have to be built, is about 300 miles.

THE MEANING OF IT. The distance from Lethbridge to Nelson, as the Crow's Nest Pass road will have to be built, is about 300 miles.

THREE BIG STRIKES

Callahan Highly Elated Over a New Discovery at Galena Farm.

30-FOOT LEDGE FOUND

It Carries Ore Averaging 200 Ounces in Silver—Wakenfield Has Struck a Big Cross Vein of a Still Higher Grade—Viking and Phoenix.

SILVERTON, June 3.—[Special.—Delayed in Transmission.]—A surprising strike has been made at the Galena mines here today. In laying the pipes over the ground for the new water supply and within a hundred feet of the working shaft an immense body of high grade galena was uncovered.

THE SMELTER QUESTION. The announcement of the agreement on the Crow's Nest Pass railroad probably disposes of the smelter question. According to the agreement made between the government and the C. P. R. there is in the first place to be no monopoly of the coal fields, for the government gets 50,000 acres, which it can dispose of as it pleases.

THE NORTHERN MAIL SERVICE. What is the reason we cannot have a daily mail to and from the north as well as to and from the south? This is one of those things that nobody, unless it be a government official, can understand.

THE NORTHERN MAIL SERVICE. What is the reason we cannot have a daily mail to and from the north as well as to and from the south? This is one of those things that nobody, unless it be a government official, can understand.

THE NORTHERN MAIL SERVICE. What is the reason we cannot have a daily mail to and from the north as well as to and from the south? This is one of those things that nobody, unless it be a government official, can understand.

THE NORTHERN MAIL SERVICE. What is the reason we cannot have a daily mail to and from the north as well as to and from the south? This is one of those things that nobody, unless it be a government official, can understand.

THE NORTHERN MAIL SERVICE. What is the reason we cannot have a daily mail to and from the north as well as to and from the south? This is one of those things that nobody, unless it be a government official, can understand.

THE NORTHERN MAIL SERVICE. What is the reason we cannot have a daily mail to and from the north as well as to and from the south? This is one of those things that nobody, unless it be a government official, can understand.

THE NORTHERN MAIL SERVICE. What is the reason we cannot have a daily mail to and from the north as well as to and from the south? This is one of those things that nobody, unless it be a government official, can understand.

FREE MILLING ORES.

Black Tail and Other Reservation Mines Show Plenty of Them. SPOKANE, Wash., June 4.—[Special.]—W. H. Williamson, one of the owners of the Black Tail claim in the Eureka district on the reservation, returned last evening from a visit to the property bringing in with him 300 pounds of the ore, which will be put through a mill test to ascertain to what extent it is free milling.

AN EXCELLENT BARGAIN.

Globe's Comment on the Coal Clause of the Crow's Nest Deal. TORONTO, Ont., June 4.—The Globe says: One of the most important concessions secured by the ministry in return for the Crow's Nest subsidy is an agreement that coal shall be sold and put on the cars at the mines at not more than \$2 per ton.

FINANCES OF DOMINION. Statement for Eleven Months of This Year Very Satisfactory. TORONTO, Ont., June 4.—The statement of revenue and expenditure which appears in tomorrow's official Gazette shows the revenue for the 11 months ending May 31 last to be \$34,557,705 and the expenditure \$29,339,886, leaving a surplus of \$5,217,810.

NEW STRIKES ON SUNSET. First Find Shows Twelve Inches of Good Copper Ore. No Shots Put into the Second Discovery, But the Ore Body is Over Three Feet Wide.

TORTURED AND HELPLESS. Rheumatism Has Hordes of Victims, and is No Respecter of Persons—South American Rheumatic Cure Resists His Cruel Grasp, and Heals the Wounds He Inflicts—Relief in Six Hours.

RIGHT FROM THE MINES. Family Ties May Be Broken in the Grand Rush for Gold, but What's Wealth Without Health?—Dr. Agnew's Cathartic Powder is a Wonderful Cure—It Never Fails to Relieve in Ten Minutes.

DETECTIVE McPHEE'S CASE. Spokane's City Council Asked to Assist a Brave and Worthy Officer. SPOKANE, Wash., June 4.—[Special.]—A petition to the city council was filed with the city clerk today, asking that an appropriation be made to defray the expenses of Detective McPhee for a trip east in search of medical treatment.

DETECTIVE McPHEE'S CASE. Spokane's City Council Asked to Assist a Brave and Worthy Officer. SPOKANE, Wash., June 4.—[Special.]—A petition to the city council was filed with the city clerk today, asking that an appropriation be made to defray the expenses of Detective McPhee for a trip east in search of medical treatment.

DETECTIVE McPHEE'S CASE. Spokane's City Council Asked to Assist a Brave and Worthy Officer. SPOKANE, Wash., June 4.—[Special.]—A petition to the city council was filed with the city clerk today, asking that an appropriation be made to defray the expenses of Detective McPhee for a trip east in search of medical treatment.

DETECTIVE McPHEE'S CASE. Spokane's City Council Asked to Assist a Brave and Worthy Officer. SPOKANE, Wash., June 4.—[Special.]—A petition to the city council was filed with the city clerk today, asking that an appropriation be made to defray the expenses of Detective McPhee for a trip east in search of medical treatment.

DETECTIVE McPHEE'S CASE. Spokane's City Council Asked to Assist a Brave and Worthy Officer. SPOKANE, Wash., June 4.—[Special.]—A petition to the city council was filed with the city clerk today, asking that an appropriation be made to defray the expenses of Detective McPhee for a trip east in search of medical treatment.

Randell & Pollett, MINING AND STOCK BROKERS

20 EAST COLUMBIA AVE., ROSSLAND, B. C. Members of the British Columbia Stock Exchange OF ROSSLAND.

Developed and Undeveloped Mining Properties Agents for the American Eagle Gold Mining Company.

Cable Address, "Auric," Rossland, B. C. P. O. Box 543. Use Moreing & Neal's and Clough's Codes.

A. ERSKINE SMITH, M. E. G. F. WHITEMAN. Late of Coolgardie, W. A. and Johannesburg, S. A. Tyler Hill, Canterbury, England. Member Rossland Stock Exchange.

Smith & Whiteman, Brokers. Rossland, B. C. Mining Properties Reported on.

TO SPECULATORS. Call and see or write for particulars of numerous first class mineral claims we can offer at prices to suit all buyers. Correspondence invited.

Cable Address, "Erskine" Rossland. Code: Moreing & Neal. P. O. Box 257.

RAILWAY ADDITION TO ROSSLAND.

Now open to the general public. Joins the original town-site on the north, on the east and on the west. The choicest business locations in the city. The most desirable residence lots. For sale by

Smith, Dean & Co., Reddin-Jackson Co., Ltd., W. S. Rugh and A. B. Irwin, Columbia Ave., Rossland.

Toronto Mining Agency Mining Brokers.

We are prepared to place on the market throughout the eastern provinces the treasury stock of mining companies in Trail Creek, Boundary, Sloan and other British Columbia mining districts. 69 YONGE STREET, TORONTO, ONT. JAMES C. SHIELDS, Secy.-Treas. M. R. GREGG, Manager.

Bank of BRITISH NORTH AMERICA. Incorporated by Royal Charter. Paid-Up Capital \$4,966,666. Reserve Fund 1,398,888. London Office: Clements Lane, Lombard St. E. C.

LENZ & LEISER, Importers of Foreign and Domestic DRY GOODS, Gents' Furnishing Goods, etc. No 9 and 11 Yates Street. Victoria, B.C.

Bank of Montreal. Capital, All Paid up, \$12,000,000. Rest 6,000,000. SIR DONALD A. SMITH, President. HON. GEO. A. DRUMMOND, Vice-President. R. S. CLOUSTON, General Manager.

Wilson-Drumheller Packing Co., Spokane, Wash. PACKERS OF THE "CHINOOK" BRAND OF Hams, Bacon, Pure Leaf Lard, Etc. Mail orders have our prompt attention.

Rossland Branch. London (England), New York, Chicago. And in the Principal Cities in Canada. Buy and Sell Sterling Exchange and Cable Transfers. Grant Commercial and Travellers Credits available in any part of the world.

ORDWAY & CLARKE, ROSSLAND, B. C. Mining Engineers and Assayers. Contracts made for Underground Surveying and Assaying, Specialty—Superintending, Development and Reporting on Mineral Properties. P. O. Box 23.

JOHN A. MOODY, LONDON, ONT. Mining Stocks. AND MINING BROKER. Prospects and Quotations Requested Weekly from all Brokers or Issuers of Treasury Stock.

BELMONT HOTEL. McDONALD & MURCHISON, Props. FIRST AVENUE, ROSSLAND. SPOKANE DRUG CO., SPOKANE WASH. Imported and domestic perfumes, rubber goods and druggists sundries.

I. C. FELL & CO., ENGRAVERS. STEEL AND RUBBER STAMPS. For mining companies, etc., at lowest prices. 31 Adelaide St. W. TORONTO.

MADE A NOTE. O. G. Labaree Has Claims. NELSON, June. Labaree has been Little Maud, eight on the east side of have a three-foot clean galena, run over and 70 per cent development work

BUSY TOWN

1,800,000 Feet of the Past F

TRAIL'S MA

Orders Issued For With the Sou Daniels in Pos fington Hotel.

TRAIL, June 4.—[proof of the surpr could be given than put of the sawm There are two suc branch of the Nelo and the other ope Columbia Smelting. They are both loc have just south of company's mill first December 29 last, started up shortly both have been in months. There is lumber famine bef and both of them h ness from the ve working to their fu hardly been able to for their product. Nelson mill has wo as many? The logs used ar rafts from up the r water set in much i in getting the res Nelson mill has do down for the time. has also been aff cause, though not and for several day been reduced, but mill will be runn capacity. In the p the mills has been orders for 160,000 fe large crews of ne the river getting, smelter company al around Waterloo in ging camp.

So a bill pine h exed, but no ginning to attack and that timber v market in the sh sawmill men say th lumber. In the five month withstanding vario company's mill o enormous total o lumber. Of this g gone to Rosslan and, has been use During the same has turned out a lumber, nearly al used here. Beside large quantities of Tr to be used in garding this fact least 1,800,000 feet used in the vari here since the fir In an illustra feet of lumber me that it is enough six-foot side wal land to Northpor could be by inch it another way, th would be nearly e fence around a miles square, cont And still the dema and cannot be app The T

There seems to be gard to getting the mail from the sou in thrice a week fr Lytton, although Rossland, today Brown, of Trail, th port had been in through Trail tod and Columbia & W land. Chas. Cunnin newspaper man, h today in the door through Trail tod, painful and it is t was crushed. It v time that a passen & Western road ha Local

Fishing is good nearby streams, an trout have been pu The new pipe power plant is d complete. The sn run by electricity The Rossland through Trail tod the team there. There were 14 men went north on the The new Colum rapidly advanced Nakusp. Jas. Anderson is and will make his Mrs. J. F. Ham paralysis. Prospects com hills almost as rap Arlington. The disputes ov seem to have been when Frank Keitl Wyne, the diswa ed in the place fo endeavor to see brought to trial f ordered to leave. R. T. Daniel, com house, and it is li will be reopene Tom C. Gray, t manager of the s pretty souvenir New Yorker who It is a handso bearing the gilt in commodore on the Trail, B.C.

MADE A NOTE. O. G. Labaree Has Claims. NELSON, June. Labaree has been Little Maud, eight on the east side of have a three-foot clean galena, run over and 70 per cent development work

THE DAILY ROSSLAND MINER.

Published every day in the week except Monday.

Full telegraphic reports from all parts of the world. Special reports from Victoria and Ottawa. The only daily paper in British Columbia having exclusive cable service from London. THE DAILY MINER is especially devoted to the Mining Interests of Rossland and Southern British Columbia. It is the most complete daily mining journal published in the world.

SUBSCRIPTION RATES.

Table with 2 columns: Subscription type and Rate. Includes entries for Daily, per month, by carrier (\$1.00), Daily, per month, by mail (1.00), Daily, per half year, by mail (5.00), Daily, per year (10.00), and Daily, per year, foreign (12.00).

For advertising rates and for sample copies address

THE ROSSLAND MINER, Rossland, B. C.

To Talk to Capital in the East You must Advertise in the

Toronto Mail and Empire

The Organ of the Great Conservative Party of Canada.

The Mail and Empire is to Ontario what the Times is to England or the New York Herald to the United States.

Address: THE MAIL, Toronto, Canada.

The Early Bird Gold Mining Co.

LIMITED LIABILITY. Capital 1,000,000 Shares, Par Value \$1.00. Fully Paid and Non-Assessable. Treasury 350,000 Shares.

The following promising properties are included in the assets of the company: The Minnie and Primrose Fractions on Red Mountain and the Columbia Mine on Lookout Mountain.

HEAD OFFICE, ROSSLAND, B. C. 48 COLUMBIA AVENUE. G. A. POUNDER, Manager.

J. E. MILLS, Rossland; B. C.

General Agent for

CARIBOO CITY,

The coming metropolis on Columbia River, Prices low, terms easy, perfect titles.

TRUTH ABOUT O. K.

J. L. Warner Succeeded by H. W. Goodhue as Manager.

MILL TO RESUME MONDAY

It Will Be Run on I. X. L. Ore to Begin With - Mine and Mill Have Merely Paid Expenses of Operating in Past Five Months.

The article in Friday morning's MINER on the O. K. mine has had the effect of bringing out certain facts which will be of much interest, and perhaps of some value, to the stockholders of the company.

Things had not been running in a satisfactory manner at the mine for some time. Several of the larger stockholders from Seattle paid a visit to the property recently, and they very forcibly expressed their dissatisfaction with the things that had been conducted.

Mr. Goodhue, the new manager, came up from Spokane Wednesday. He called at the MINER office yesterday and made the following statement about the O. K. mine and mill:

"It is true," said he, "the mine and mill have been closed down this week. We are getting ready to run through some I. X. L. ore, about 400 tons I think, and the mill will be in full blast again on Monday. In the meantime I am getting acquainted with everything about both mill and mine, but I have had a long talk with Mr. Newman, formerly superintendent, and I know pretty well what the situation is there."

"I think the mine will come out all right. I think we can soon open up some new ore bodies, and that we shall soon be running on our own ore again."

"I do not know exactly how to account for the heavy drop in O. K. stock, unless somebody is purposely trying to bear the stock with a view of buying in a lot of it at a low figure. I shall know more about this phase of the subject later on."

"We shall go ahead in a cautious and conservative manner, and I believe that we shall soon have the property in good shape. This all I can say just now."

Mr. Goodhue is evidently determined to do all he can to bring things out of their present tangle, and we believe he deserves the sympathetic co-operation and support of the other stockholders. Manager Warner appears to have succeeded in arousing very general distrust. He promised dividends when no dividends were in sight and he told a representation of this paper last fall that the mine had enough ore reserves to keep a 10-stamp mill running one year.

He also told us on one occasion that he had over \$200,000 worth of ore in sight, and on another occasion that there was \$340,000 in sight in the mine. He made similar representations to the stockholders. The new management proposes to run the mill as a custom mill until the mine has been put in shape to furnish the mill with ore, which, according to the best advice, it is not now in a position to do, proving that Mr. Warner's statements as to the amount of ore in sight were the grossest exaggerations. Mr. Goodhue believes, however, in common with the other large shareholders, that the mine is a good one and only requires careful and intelligent management to make it pay.

The most startling piece of information in connection with the mine that we have been able to elicit is this. Although 2,472 tons of ore have been milled since January 14 last and 172 tons of ore and concentrates have been shipped in the same period, the treasury with which to pay a dividend has not materially decreased its debt, which amounted on January 14 to many thousand dollars, including the cost of the mill. The company has 100,000 shares of treasury stock left and the larger shareholders are now arranging to sell this to clear the mine of debt. The mill will resume work as a custom mill on Monday and Manager Goodhue says it can be run at a profit of \$40 per day. In the meantime the mine will be examined and more development will be done at once with the view to making the mine a producer once more.

THE WHITEWATER MINE. J. C. Eaton in Spokane-Sale of the Property Seems Likely. SPOKANE, Wash., June 4.—[Special.]—J. C. Eaton, part owner of the Whitewater mine near Kaslo, came down from the north last evening to meet W. C. Price, of San Francisco, who holds an equal ownership in that property with Mr. Eaton. It is believed Mr. Price's coming is in accordance with an offer made for the purchase of the property. While Mr. Eaton declines to deny or affirm the reports to this effect, he admitted several offers had been made for the mine, but as yet no money had been put up, and until it was there would be no sale.

CHERRY'S TROUBLES. Were of the Heart—Human Skill Was Almost Defeated When Dr. Agnew's Cure for the Heart Fell into the Breach, and in a Few Minutes After One Dose He Found Great Relief, and Five Bottles Made a Bad Heart a Good One. Wm. Cherry, of Owen Sound, Ont., writes: "For the past two years I have been greatly troubled with weakness of the heart and fainting spells. I tried several remedies, and consulted the best physicians without any apparent relief. I noticed testimonials of great cures made by Dr. Agnew's Cure of the Heart. I procured a bottle, and the first dose relieved me. The first bottle gave me great relief. After using five bottles there are none of the symptoms remaining whatever. I think it a great boon to mankind." Sold by McLean & Morrow.

WARNING TO GAMBLERS.

Superior Court Decides They Are Guilty of Vagrancy.

SPOKANE, Wash., June 4.—[Special.]—Judge Prather rendered a decision this morning which will in a way serve as a warning to the frequenters of gambling houses in this city and to habitual vagrants as defined by the law.

It was in response to the applications of Stephen Hack and M. H. Symons for release from the custody of the chief of police upon a writ of habeas corpus. Hack and Symons were convicted in the municipal court of vagrancy upon the complaint of Officer Sullivan, who charged them with being gamblers. They have been frequenting various gambling houses of late, and by crooked means beat the crap games. Judge Miller imposed a fine of \$25 upon each of the defendants.

They sued out a writ of habeas corpus on the grounds that the punishment inflicted was contrary to the law and that the charter act was in violation of the state law. The matter came up for hearing this morning. The defendants were in court in the custody of Chief Hawthorne, and there was a great legal battle for a while, but the city came out on top.

After lengthy arguments by both sides Judge Prather denied the writ. He said the law under which the defendants were convicted and sentenced was valid and not in conflict with the state law. The attorneys for the defense gave notice of appeal to the supreme court and the court fixed the supercedas bond at \$150.

YMR'S FIRST SHIPMENT

First Mine on Quartz Creek to Enter the List of Producers.

Blue-Eyed Nellie Has Two Feet of Good Ore - City to Have Water Works and Electric Lights.

YMR (Quartz Creek), June 3.—[Special.]—The inhabitants of Ymir City are anxious to obtain a local police constable, and a petition, signed by nearly everyone living in the city or its immediate vicinity, is being forwarded to the provincial authorities for this purpose. It is hoped the constable will shortly be appointed from among several local candidates.

This morning work has been started on a reservoir on Quartz creek to supply Ymir with water. A long flume will have to be constructed from the dam to the city. The work is being done by a company of Victoria and Rossland men, who have also, it is said, undertaken the installation of an electric light plant.

Ymir will thus shortly be in a position to compare with its older neighbors. The electric light is to supply the whole town. The water from Quartz creek is unequalled for purity and sweetness. The Ymir mine made its first shipment of ore today. Another shipment will follow this week.

The Blue-Eyed Nellie.

The Blue-Eyed Nellie mine is situated about a mile and a half from Ymir and can be distinctly seen from the city. A 30-foot tunnel has been driven, revealing a fine ledge, 7 feet between walls with two feet of solid ore. Assays have been taken running up to \$30 per ton in equal proportions of gold and silver. Besides the tunnel there is an open cut of 20 feet, made by the original prospectors. The claim, together with the adjoining Laddie and Canada Lily claims, was staked September last by McCleod, Campbell and McDonald. The company was stocked by the first named and a meeting was held in Rossland on Tuesday last to decide the details of development work to be undertaken.

Anjoining the Blue-Eyed Nellie is another promising claim, the Bay Horse, owned by Ryan & O'Leary. A 20-foot tunnel has been driven, which has opened the ledge at a depth of eight feet. The ledge is about four feet wide and assays taken give 17 ounces silver and \$2 1/2 gold.

ASSAULTED IN THEIR HOME.

Mrs. Maxwell and Mrs. Click Cause the Arrest of Five Italians.

Friday afternoon Officer Peyer arrested five Italians for assault and using gross and insulting language to Mrs. Maud Maxwell and Mrs. Jennie Click. The two women complainants reside about a block east of the Red Mountain depot. On Thursday night they went to bed as usual about 11 o'clock. At 1 o'clock Friday morning Mrs. Maxwell was awakened by someone who was trying to choke her, and her neck bears the marks very distinctly. On awakening she was warned not to scream or she would be killed. This she does not remember doing, but the next she knew her sister was grappling with the fiend who had entered her room while she slept.

Mrs. Click then commenced screaming for help when she was struck several times and knocked down. The villains of the matter was reported to the police late Friday afternoon and Officer Peyer arrested the following: Gabrielle Mealeano, Frank Mealeano, John Devoina, Fred Jordan and Frank Cicerello. They can prove alibi. This they no doubt can, but they are also charged with insulting language on various and sundry occasions.

IT HOLDS THE KEY.

Insignificant Beginnings—But They Steal On One As a Thief in the Night, and Before One Has Time to Wonder What Ails Him He Is in the Firm Grasp of Disease—South American Kidney Cure Will Break the Bonds and Liberate. No Matter How Strong the Cords. The thousands of cases that have been helped and cured by the great South American Kidney Cure is the best proof of its curative qualities. The recommendation of all kidney troubles. The formula is compounded on the very latest scientific discoveries in the medical world. There are thousands today who do truthfully say "I am living because I used South American Kidney Cure." It relieves in six hours.

MADE ANOTHER INVESTMENT.

O. G. Labaree Has Bonded Two Galena Claims Near Sasca.

NELSON, June 4.—[Special.]—O. G. Labaree has bonded the Granite and Little Mand, eight miles north of Sasca, on the east side of Kootenay lake. They have a three-foot vein, with 15 inches of clean galena, running 110 ounces in silver and 70 per cent lead. Extensive development work is to be started at once.

BUSY TOWN OF TRAIL

1,800,000 Feet of Lumber Used in the Past Five Months.

TRAIL'S MAIL SERVICE

Orders Issued For a Daily Service With the South Via Rossland-Daniels in Possession of the Arlington Hotel.

TRAIL, June 4.—[Special.]—No better proof of the surprising growth of Trail could be given than is shown by the output of the sawmills operating here. There are two such plants here, one a branch of the Nelson Sawmill company, and the other operated by the British Columbia Smelting & Refining company. They are both located along the river bank, just south of town. The smelter company's mill first began operations on December 29 last, and the other plant started up shortly afterward, so that both have been in operation barely five months. There had been a veritable lumber famine before their completion, and both of them have done a big business from the very first. However, working to their full capacity, they have hardly been able to supply the demand for their product. The smelter sawmill has employed 24 men steadily, and the Nelson mill has worked more than half as many.

The logs used are brought down in rafts from up the river. Since the high water set in much trouble has been felt in getting the rafts down here, and the Nelson mill has been forced to close down for the time. The smelter plant has also been affected by the same cause, though not in so large a degree, and for several days past the output has been reduced, but in about ten days the mill will be running again at its full capacity. In the past ten days one of the mills has been compelled to refuse orders for 150,000 feet of lumber because of its inability to supply the stock.

Large crews of men are employed up the river getting out the logs. The smelter company alone employs 75 men around Waterloo in its timber and logging camps. So far bull pine has been used almost exclusively, but now the loggers are beginning to attack the tamarack forests, and that timber will soon be on the market in the shape of lumber. The sawmill men say that it makes excellent lumber.

In the five months of operation, notwithstanding various delays, the smelter company's mill has produced the enormous total of 1,600,000 feet of lumber. Of this about 300,000 feet has gone to Rossland and the rest, 1,300,000 feet, has been used right here in Trail. During the same time the Nelson mill has turned out about 500,000 feet of lumber, nearly all of which has been used here. Besides this, there have been large quantities of lumber shipped into Trail to be used in building, but disregarding this fact it is evident that at least 1,800,000 feet of lumber has been used in the various buildings put up here since the first of the year.

As an illustration of the fact that a foot of lumber means it may be stated that it is enough for the planking of a six-foot sidewalk reaching from Rossland to Northport and the planking could be two inches thick. Or, taking it another way, that quantity of lumber would be nearly enough to run a 10-foot fence around a plot of ground eight miles square, containing 64 square miles. And still the demand for lumber goes on and cannot be appeased.

The Trail Mail.

There seems to be nothing new in regard to getting the mails into Trail. The mail from the south continues to come in thrice a week from Northport over the Lytton, although Postmaster Wadds, of Rossland, today informed Postmaster Brown, of Trail, that the agent at Northport had been instructed to send the Trail mail daily over the Red Mountain and Columbia & Western roads via Rossland.

Chas. Cunningham, a well known newspaper man, had his finger pinched today in the door of one of the Columbia & Western trains. The hurt was very painful and it is thought that the bone was crushed. It was the first and only time that a passenger on the Columbia & Western road has been hurt.

Local Brevities.

Fishing is good in the river and the nearby streams, and some pretty good trout have been pulled out.

The new pipe line to the electric power plant is done and the plant is complete. The smelter will probably be run by electricity on Monday next.

The Rossland lacrosse team played through Trail today for Nelson to pass the team there tomorrow afternoon. There were 14 men on the party. They went north on the Kootenay.

The new Columbia river boat is being rapidly advanced by the builders at Nakusp.

Jas. Anderson is back from Vancouver and will make his headquarters here.

Mrs. J. F. Hamilton is very ill with paralysis.

Prospectors continue to go out into the hills almost as rapidly as ever.

Arlington Hotel Troubles. The disputes over the Arlington hotel seem to have been finally settled today, when Frank Keith, the cook, and Wm. Wyne, the dishwasher, who have camped in the place for the last month in an endeavor to secure their wages, were brought to trial for trespass and were ordered to leave. This gives the owner, R. T. Daniel, complete possession of the house, and it is likely that the Arlington will be reopened very shortly.

Tom C. Gray, the ever-popular traffic manager of the smelter, has received a pretty souvenir from F. W. Myers, a New Yorker who visited here recently. It is a handsome morocco case containing the gilt inscription: "The only commodore on the beach, Tom C. Gray, Trail, B.C."

MADE ANOTHER INVESTMENT.

O. G. Labaree Has Bonded Two Galena Claims Near Sasca.

NELSON, June 4.—[Special.]—O. G. Labaree has bonded the Granite and Little Mand, eight miles north of Sasca, on the east side of Kootenay lake. They have a three-foot vein, with 15 inches of clean galena, running 110 ounces in silver and 70 per cent lead. Extensive development work is to be started at once.

ett, OKERS B. C. k Exchange Properties e Gold Box 543. WHITEMAN, Canterbury, England. Island Stock Exchange. man, nd, B. C. ON. e for particulars we can offer at ce invited. TION e original town. st. The choicest desirable residence W. S. Rugh and and. Agency S. vices the treasury stock of Columbia mining districts. SHIELDS, Sect.-Treas & LEISER, porters of and Domestic GOODS, nishing Goods, etc. Victoria, B.C. SALE. hydraulic prop- ater privilege sit- panish Creek, ten Quesnelle Forks, C. Full particu- ard from ard Plewman, Rosland, B. C. umheller Co., Spokane, Wash. EERS OF THE "NOOK" BRAND OF Pure Leaf Lard, Etc. ve our prompt attention Y & CLARKE, SSSLAND, B. C. ners and Assayers. for Underground Surveying pecialty—Superintending Dev- erting on Mineral Properties. NT HOTEL & MURCHISON, Props. ROSSLAND. NE DRUG CO., SPOKANE WASH. domestic perfumes, rubber goods dries. Agents for Riggs' Rheu- he sure cure for rheumatism. ggest stock of goods in the il orders solicited lers in Assayers' Supplies WELLS & CO., GRAVERS RUBBER STAMPS. pparies, etc., at lowest prices. St. W. TORONTO.

MAKE THINGS HUM

What the Crow's Nest Line Will Do for Kootenay.

NEW ERA OF PROSPERITY

Mining Industry Will Be Put on a Firm Basis and Capital Will Flow Into the Country—Blair's Brilliant Statesmanship Recognized.

The one topic of conversation in Rossland Thursday was the news published by THE MINER that the Dominion government and the C. P. R. had made arrangements for the immediate construction of the Crow's Nest Pass railway by the latter company, under an agreement which secured material reductions in freight rates, prevented a monopoly of coal lands and secured cheap fuel for the mines and smelters of Kootenay, and to other roads running powers over the new line through the pass. The news was joyfully hailed on all sides as the assurance that her colonies were enabled to go on with his road from Robson to Pentiction.

A MINER representative called on a number of well known business men to get an expression of their views as to the effects of the construction of the new railroads and they were found below.

J. B. McArthur's Views.
"I agree with THE MINER this morning," said J. B. McArthur, "when it says that probably nothing has occurred since Confederation that is of such vast and far-reaching importance to Canada as the announcement which Mr. Blair made to the liberal caucus yesterday. By the recent action of the liberal party in regard to the tariff Canada has taken a long forward movement in making imperial federation the ultimate end of Canadian politics and has brought the mother country and her colonies very much closer together than ever before. The building of these roads will still further emphasize this idea."

What the New Road Means.
"Canada now offers to the world, and especially to the British investor, the largest and richest mineral zone left untouched by the hand of man. Capital today is seeking mines for investment. The building of these railways will give the mine owners cheap transportation and smelters cheap fuel. It means also an enormous expansion of trade all over Canada and especially in southern British Columbia."

Praises Blair's Work.
"Mr. Blair deserves great credit for the manner in which he has safeguarded the interests of the people in this great matter. The result of these negotiations shows most convincingly the enormous advantage Mr. Blair possesses because he personally visited the district, met the mine owners and learned from their own lips their needs and what was essential in order that the mining industry might live and prosper. He had on his visit to the Centre Star mine and the explanations which Mr. Durant gave him on the enormously large ore bodies of both high and low grade ores, an ocular demonstration of how vital cheap transportation and smelters cheap fuel were to the success of mining. I am satisfied if he had not made that visit we would not have obtained such a bargain."

"I am very glad the C. P. R. obtained the contract. It is our national highway and its interests are so bound up with Canada that it is part of our national life. And last, but not least, THE MINER may congratulate itself on the great intelligence it has brought to bear on the question. Its articles have been fair, reasonable and withal convincing and have been frequently quoted in the Globe and other eastern papers."

"Prosperity is coming and what with a rush. It behooves every man who has an interest in the country to be up and at it. It is refreshing to have a big thing like this to come and give us a chance to laugh at depression."

Mayor Applauded the Government.
Mayor Scott was wearing a happy smile, as he sat in his office on his work. When asked what his opinion was as to the future outlook of this district now that the Crow's Nest line was assured, he said:

"I consider the deal concluded between the government and the C. P. R. the greatest event that this country has seen and that the benefits that will be derived from the early completion of this line are too numerous to mention. However, briefly, I will state that the concessions obtained by the Dominion government from the C. P. R. have shown good judgment on the part of the government, as is also evidenced in giving the line to the C. P. R., the greatest railway institution on the continent."

"The mere fact of the C. P. R. constructing this road will now give an impetus to British Columbia interests, especially the mining industry by making it possible to obtain cheap fuel and other necessities for the treating of our ores. The road when constructed will do the traffic of Canada, which it is entitled to, since the outlay of capital in the construction will revive the whole country."

"Rossland has made a rapid stride in the last year, and is going ahead wonderfully at the present time. This new undertaking will prove a greater stimulus to enterprise than ever and will cause the values of realty to advance not only in this section, but all over British Columbia. Confidence will once more be restored and the whole country become prosperous."

Turning Point Safely Passed.
D. M. Linnard was jubilant upon reading yesterday's MINER, and remarked that its editorial had the right ring, and that the agreement which the C. P. R. and the Dominion government had arrived at was the turning point of Canada's industrial history. The mere fact of this great transcontinental line building the Crow's Nest road would inspire confidence in the British investing public.

"The construction of this line," said he, "means an expenditure of \$15,000,000 in 18 months by the C. P. R. This

will bring British Columbia and our mining industries before the eyes of British capital, which will flow into this country at a rapid rate. Europe, especially London, will invest quite freely. Smelters and reductions will be established. Fuel will be so cheapened that low grade ore will be melted and refined at a profit. British Columbia will advance at a rapid pace and will enjoy such a decade of prosperity as her sister provinces have never experienced."

Bogle Calls it a Treaty.
D. B. Bogle says: "I believe in the government ownership of railroads, and from an abstract point of view, the arrangement made with the Canadian Pacific railway might be criticised, because the bonus paid forms a basis of credit on which the Crow's Nest Pass road may be over-looked and over bonded. But from a practical point of view it is probably the best arrangement possible. The government has secured substantial concessions from the Canadian Pacific. The arrangement is more like a treaty between rival powers than anything else."

Look Out For a Boom.
"It will have marked and immediate effects in West Kootenay. It means beyond doubt the retention of the smelting industry in Canada. It also means a boom in London. The heavyweights of Eastern Canada who always follow the C. P. R. tip, will also come in more freely than hitherto. So far as the interior development of British Columbia is concerned, I think it will result specially in the marked and rapid advance of the country west of Rossland."

An Influx of Immigrants.
John F. McCrae was seen early in the day, and when asked for his views, went into ecstasies, and exclaimed: "It is the greatest thing that ever happened, and brings to the province of British Columbia an era of prosperity both commercial and industrial, that is beyond comparison. It means an influx of capital and immigration, the opening up and the rapid development of the Kootenays."

"It means that Canada will offer itself as the best field for investment in the world. Smelters, refineries, reduction works will spring upon all sides and find plenty of ore to treat. Coal and coke will be so reduced in price that even low grade ores will be treated at a large profit."

Credit Due to Mr. Blair.
"The fact that the C. P. R. will have the construction of the road means its early completion, and will banish that skeptical feeling of depression that has been existing all over Canada for the past two years."

"In my opinion it has come at the right time and the liberal government deserves the greatest praise, especially Minister Blair, who visited our section of the country and saw for himself our needs and wants, which he then prevailed upon the C. P. R. to accede to. In my opinion the Kootenay will be benefited first, but Rossland will be the brightest star and the great financial centre of the whole mining region."

Means For English Capital.
R. J. Bealey said: "I can hardly realize what the construction of this road means for Kootenay. Our mining industries will now advance and the work of development proceed so rapidly that we will startle the investing public the world over. British capital that has long been idle will now find a channel for investment. The commercial industries, not to say anything of our great mineral deposits, will be to them a beacon light to which they can direct their steps."

"The eastern provinces will find a ready market for their wares; Manitoba and the territories will give to us our supply of produce and we will be able to give us cheap fuel with which we can reduce our cost at a large profit."

"The concessions granted by the C. P. R. to the government speak for themselves and Minister Blair is the lion of the hour, and has proved himself a true friend of British Columbia."

New Life For Mining Industry.
James Brady had just laid aside his morning MINER after reading the joyful news for the second time. He spoke briefly but to the point and said: "This intelligence has put new life into the mining industry. It will not only benefit Kootenay, but the province and the whole country. It will cause the amount of capital to come to the province of British Columbia as it should be known to the outside world. It will reduce the cost of fuel, and by lessening the cost of reducing our ores energy will be profitably mined. The immediate construction of the road, involving as it does the expenditure of many millions, will furnish thousands with employment."

Heinze and the Province.
Honk D. W. Higgins, speaker of the provincial house, was interviewed with special reference to the arrangement said to have been made between the government and Mr. Heinze for the building of the line from Robson to Pentiction.

"Mr. Heinze, according to the Subsidy act of 1896," said Mr. Higgins, "will get 10,000 acres of land per mile for the construction of a narrow gauge road from Robson to Pentiction, a distance of about 200 miles. By the terms of the same act, should he construct a standard gauge road he will receive 20,000 acres of land per mile. By the act of 1897 he may take \$4,000 in cash per mile for the 100 miles of road between Pentiction and Boundary creek in lieu of the land grant for that distance. For the additional 100 miles between Boundary creek and Robson he will receive no cash subsidy from the province, but will get the land grant."

Importance of the Line.
"As to the importance of the line from Robson to Pentiction, it is hardly second to the Crow's Nest line itself. Much of it will run through a good agricultural and mining country. Towns and smelters will spring up every few miles. The best of it is that the farmers along the line will be able to supply the mining population with nearly everything they will need. I have been over much of the line, especially between Grand Forks and Pentiction, and I can truthfully say it is one of the finest countries in the world."

"The building of this road will be a most important factor in the development of the mining resources of the country, since machinery for smelters, stamp mills and mining plants can be taken in and ore and matte shipped out to the markets of the world."

ALL ARE SATISFIED

More Details About Government's Deal For Crow's Nest Line.

NOT SURE ABOUT HEINZE

Coal Will Be Delivered at the Columbia For \$4 Per Ton or Less—Freights on Crow's Nest Line Under Government Control.

[From our Special Correspondent.]
OTTAWA, Ont., June 3.—The agreement between the government and the C. P. R. for the Crow's Nest Pass road is well received here by all parties. The concessions got from the Canadian Pacific are more than were expected. The British Columbia members are well satisfied with the arrangement with the Canadian Pacific, but have yet to see how that part of the negotiations with the independent company for the road from Nelson to Pentiction is to work. The government has not been very explicit on this arrangement.

Bestock Interviewed.
Referring to the whole agreement Mr. Bestock stated to THE MINER's correspondent tonight that it was the best that could be obtained under all the circumstances. What was wanted now was for people to get what they had bargained for and to see that legislation was secured to make the terms binding on the company.

Coal at \$4 Per Ton.
Regarding coal, the price will be \$2 per ton on board the cars at the mines and the government will control the rates over the C. P. R., so that it ought not to be over \$4 per ton at the Columbia river.

Control of Freight Rates.
In regard to rates the government controls them on the list of articles handed in by the company. Among those articles which will be mentioned at reduced rates may be mentioned apples and green fruit, coal oil, agricultural implements, binding twine, cordage, wire for fencing, paints, oils, stock for breeding, etc., the object being to assist the farming community. The local freight rates will remain the same as at present, under the control of the C. P. R. The government cannot interfere in regard to these rates, but it is expected that they will be reduced to 10 cents per ton. This reached 10 cents per ton at the Crow's Nest Pass road. In regard to freight rates on goods destined to any point on this road the government takes the power to regulate all rates.

The anti-combine clause carried in the house tonight. A debate then arose on the duty on mutton which is placed at 33 cents. The opposition moved to strike it out and make it dutiable at three cents a pound, because the country would be crowded with cheap mutton from New South Wales and other Australian colonies.

Reference was made to British Columbia and stock showed that the reduction in the duty on mutton would be beneficial to the farmers of British Columbia and the people of Washington. Sheep were brought in on the ranches, and sent to the feed for the cattle as they could not eat after the sheep. British Columbia was not a sheep country. This reduction of duty would give them a large outlet for their wool. Mr. Oliver of the Northwest.

For Imperial Federation.
Works introduced a resolution in the senate in favor of the present being the time for the colonies to draw closer to the mother country and urging Canada to be the first to make overtures.

THE WAR EAGLE COMPANY.

First Shareholders' Meeting Held—Policy of the Directors Outlined.
TORONTO, Ont., May 31.—The first shareholders' meeting of the War Eagle Mine company was held here today with a large attendance. The financial statement for the four months ending April 30 showed the expenses to be \$43,043.27, while the proceeds from sales were \$40,635.20 and net profit \$2,408.07. The directors observed that the rates for freight and treatment now average \$10 a ton, while the Crow's Nest railway is only being raised and will reduce this at least \$2. So far an average of 23 tons is only being raised and development work only being done. The directors proposed that the policy be pursued be that of development alone, limiting the production to 25 to 30 tons per day until the railway is created. Some shareholders favored increasing the production to 100 tons daily so as to pay monthly dividends, but the report was adopted.

The position of the directors is that to ship 100 tons daily would be to lose \$250 daily owing to the high charges, while if they Crow's Nest Pass through, a number of smelters will be started, and the company will be in a position either to build a smelter of its own to treat its own ores, or to contract with some independent smelter at better rates. Should the agreement to run the line be made at once, the present policy will possibly need to be continued only three or four months.—Vancouver News-Advertiser.

THEY GOT HIGH ASSAYS.

New York Shareholders in Jumbo No. 3 Pleased With the Property.
Some very fine assays were had Thursday from the shaft of the Jumbo No. 3, the property of the Jumbo No. 3, Kootenay company. J. W. Boyd, local manager of the company, took several New York members of the company down to see the property Wednesday and they brought back several samples of ore. One of these went \$63.20 and another \$179.40, and another \$7.52. These assays leave no doubt of the existence of very rich ore in the Jumbo No. 3. The New York owners were so well pleased they concluded to put a night shift as well as a day shift and will also put in a pump. They are much pleased with the camp as a whole and are probably be extensively interested in British Columbia.

A SEALER'S BAD LUCK.

Victoria Schooner Lost Three of Its Crew While Hunting Seals.
VICTORIA, June 4.—[Special.]—A letter received today from the captain of the sealing schooner Geneva, of Victoria, now on the Japanese coast, shows that the vessel had a whole series of bad luck since leaving this side of the Pacific. After leaving the Hawaiian islands in March heavy storms broke out, resulting in two boats being smashed and the cook laid up with his side badly injured. Later in March one of the crew, Frank Andrews, died of hemorrhage, and on April 14 a boat's crew of three men was lost. These were James Collinson, hunter; Wm. Henneberry and Arthur Hodgins, boat puller and steerer. They left the schooner at 1 o'clock after seal. The day was rather thick. It is thought the boat overturned, as nothing has since been seen of them.

There is a bare chance of their being picked up, as one or two other schooner crews were a couple of miles away from the Geneva, but this is only a slim chance. Collins and Hodgins belonged to Victoria, Henneberry belonged to Halifax.

RESULTS OF THE TARIFF.

VICTORIA, June 4.—[Special.]—As the result of the new tariff Kurtz & Co., cigarmakers, who have been in business many years in Victoria, have closed up, as at the prices they have to pay now they cannot compete with outsiders. On the other hand the tariff allows corn to come in free and has resulted in the Brackman-Ker Milling company deciding to put in an extensive plant to make corn meal.

MR. CORBOULD'S COMPANY

Meeting of Canadian Pacific Exploration Yesterday in London.
Lord Powerscourt's Address to Shareholders—Large Holdings Both in West Kootenay and Ontario.
LONDON OFFICE OF THE MINER, 18 Bishopsgate Street, Within, E. C.
LONDON, June 3.—[Special Cable.]—Viscount Powerscourt presided at the statutory meeting of the Canadian Pacific Exploration company today of which W. H. Corbould of Rossland, is manager. In his address he reported that \$50,000 had been subscribed privately by English and continental capitalists and that the company possessed a large number of mineral claims in West Kootenay and in the Rainy river district of Ontario and had options on many more. He considered the prospects of the company most promising.

The chairman referred to the liberal mining laws of Canada and also dwelt on the cheapness of developing properties there. He stated that the company had been registered in February under an excellent auspices. It was organized for the purpose of undertaking exploration, land, trust and mining operations and had excellent prospects. The vendors will receive no cash. He then referred to some fallacies regarding the climate and conditions of mining and explained them away.

He gave a description of the various groups of claims owned by the company, and the work done on them, and the value of the ore as determined by assays. He stated that the company's holdings in Kootenay consisted of 1,300 acres and in Ontario of 700 acres. It is the intention to develop these properties and then organize subsidiary companies to work them.

WILL REPRESENT CANADA.
Premier Laurier Left for London Yesterday—Sir Henry Strong Went Too.
OTTAWA, Ont., June 3.—Premier Laurier set out this morning on his trip to London to share in the diamond jubilee celebration as representative of the Dominion of Canada. He was given a pleasant send off by his admirers, who were on the station platform at the hour of 8 o'clock. Lady Marjorie Gordon was present as the representative of the vice-regal household and presented Mrs. Laurier with a handsome bouquet of flowers.

Chief Justice Sir Henry Strong left this afternoon for London to take his seat on the judicial committee of the privy council. He was accompanied by his grandson, L. M. Lyman, who goes to represent the Toronto Globe at the diamond jubilee, and Mr. McTavish, who will argue the case of reference and the appeal regarding power to appoint Q. C.'s.

Question of Bi-Metallism.
LONDON, June 5.—The Morning Post, commenting editorially upon the cordial reception given by President Faure to the American bi-metallism commission, says: "The first necessity of an agreement is that the contracting parties should adhere scrupulously to their bargain, but constancy of policy is not daily assured under the constitution of a democratic republic. The second necessity would be the consent of Great Britain, without which nothing can be done. Her attitude, however, will doubtless be largely contingent upon the position assumed by the alliance of America and France."

HAND IN HAND.
Health and Happiness go Hand-in-Hand. With Stomach and Nerves All Out of Sorts, Health and Happiness are Unknown.
Frank A. Gadois, Cornwall, Ont.: "I was for several years a great sufferer from indigestion, dyspepsia and nervousness. I took many remedies without any relief. I saw South American Nerve and Adrenaline advertised and procured a bottle. I can truthfully say it is the best medicine I ever used, and I strongly recommend it to anyone suffering as I did. A few doses wonderfully helped me, and two bottles have made a new man of me." It cures by direct action on the nerve centres.
Sold by McLean & Morrow.

Piles Cured in 3 to 6 Nights—Itching, Burning Skin Diseases Relieved in One Day.
Dr. Agnew's Ointment will cure all cases of itching piles in from three to six nights. One application brings complete relief. For blind and bleeding piles it is peerless. Also cures tetter, salt rheum, eczema, barber's itch and all eruptions of the skin. Relieves in a day. 35 cents. Sold by McLean & Morrow.

PROFESSIONAL CARDS.

C. R. HAMILTON.
Barrister, Solicitor, Etc.
Columbia Ave., Rossland.

A. W. MORE & CO.,
Mining and Stock Brokers,
Correspondence Solicited, Clough's and Moreing & Neal's Codes Used.
86 Government St., VICTORIA, B. C.

W. M. NEWTON,
Mines and Mining Stock Broker.
Fire Insurance and Notary Public. Assisted by Mr. Edward Baillie, Expert Accountant.
Office with F. W. Rott, Columbia Ave., ROSSLAND, B. C.

SLUMP IN O. K. STOCK

One Thousand Shares Sold Yesterday in Spokane at Seven Cents.

IS THE MINE CLOSED DOWN

It Was So Rumored Around Town Last Evening—Shareholders Have Been Uneasy for Some Time—Receiver May Be Applied For.

[From Friday's Daily.]
What is the matter with the O. K. company? This is a question which has been quietly whispered around among mining operators and brokers for some time past until Thursday night when all sorts of rumors were flying around. Half a dozen people dropped into THE MINER office in the course of the evening to learn if it was true that the O. K. mine had closed down and all that we could tell them was that if it had we did not know it.

Whether or not the mine is shut down is a question that the people will be able to determine for themselves before the next issue of THE MINER, but that there is something radically wrong with the affairs of the O. K. company is evidenced by the closing quotations on the Spokane exchange yesterday. The price of the O. K. stock was quoted yesterday in Spokane at 10 1/2 asked, and 1,000 shares were sold at 7 to some adventurous buyer.

For several months past THE MINER has been endeavoring to get detailed information about the mine from Manager Warner, but so far without success. Several subscribers wrote asking for particular information and when these letters were referred to Mr. Warner he only vouchsafed to reply in the most glittering generalities, asserting that if the enquirers were stockholders they could get full information from the secretary. THE MINER, not being a shareholder, was in no position to demand a statement of the secretary.

One thing is certain about the management of the O. K. company, and that is that it has not kept the promises it made to many purchasers of its treasury stocks. These were promised returns as far back as last fall, and when dividends failed to materialize then they were promised them as soon as the mill ran a month. The new mill has now been running steadily since January 14, and according to the statement of its manager, made weekly to THE MINER, 2,472 tons of ore had been milled up to last Saturday night. During the same period the mine has shipped 172 tons of ore and concentrates.

This constitutes enough work to prove whether or not the mine is paying or whether there is any possibility of making it pay. Many shareholders have been discussing for some time the advisability of applying for a receiver for the company and now that they see their stock sold down to 7 cents we shall expect to see some action in that direction taken very soon.

IRON CREEK MINES.

Fine Looking Gold Quartz Brought in From the Chrysolite.
W. F. Griswold, who has returned from the new mining district on upper Big Sheep creek, reports a very fine showing on the Chrysolite and Virginia Belle. He brought in some of the vein matter from the Chrysolite. It is quartz carrying iron. A similar ore was recently found on a claim on the east side of the Columbia just below Trail.

Mr. Griswold says there are both quartz and iron capped ledges running through the Chrysolite and Virginia Belle. The country rock appears to be granite. No copper or galena to speak of has yet been found and the sole value appears to be in gold.

DYSPEPSIA

CURED BY DR. CHASE.
FOR EIGHTEEN YEARS W. W. HODGES SUFFERED—DR. CHASE'S KIDNEY-LIVER PILLS EFFECTED AN ALMOST MIRACULOUS CURE.

Messrs. EDMANSON, BATES & CO., Toronto.

DEAR SIRS,—I take the liberty of writing to you regarding my experience with DR. CHASE'S KIDNEY-LIVER PILLS, and the wonderful cure of dyspepsia of 18 years standing effected by them with three boxes. I am as well as I ever was, and am a man of 64 years of age. I have recommended DR. CHASE'S KIDNEY-LIVER PILLS to a great number of people and they all say they are worth their weight in gold. If you desire any further statement or certificate of my case, I will be pleased to furnish one.
Yours truly,
W. W. HODGES,
Holland Landing, Ont.

SOLD BY McLEAN & MORROW, DRUGGISTS.

PROFESSIONAL CARDS.

C. R. HAMILTON.
Barrister, Solicitor, Etc.
Columbia Ave., Rossland.

A. W. MORE & CO.,
Mining and Stock Brokers,
Correspondence Solicited, Clough's and Moreing & Neal's Codes Used.
86 Government St., VICTORIA, B. C.

W. M. NEWTON,
Mines and Mining Stock Broker.
Fire Insurance and Notary Public. Assisted by Mr. Edward Baillie, Expert Accountant.
Office with F. W. Rott, Columbia Ave., ROSSLAND, B. C.

Canadian Pacific Railway.

AND 800 PACIFIC LINE.
The Cheapest, Most Comfortable and Direct Route From ROSSLAND, KASLO, NELSON AND ALL KOOTENAY POINTS.

Through Tickets to and from the Pacific Coast to Eastern and European Ports. Equipment unsurpassed, combining palatial dining and sleeping cars, luxurious day coaches, tourist and free colonist sleeping cars run on all trains.

Commencing June 1st a daily service will be inaugurated by the C. P. R. Kootenay steamers, leaving Rossland daily at 3 p. m., for all points east and west, making direct connection with steamer at Trail.
Steamer LYTTON leaves Trail daily at 8:00 a. m., connecting at Weneta and Northport with Spokane Falls & Northern.
For particulars as to rates, tickets, terms, etc. apply to any agent Canadian Pacific Railway, or to

A. B. MACKENZIE, Agt., Rossland, H. M. MacGREGOR, Traveling Passenger Agent, Nelson.
GEO. McL. BROWN, District Passenger Agent, Vancouver.

East GREAT WEST

The Surveyors Chain Made It THE SHORTEST Transcontinental Route.

It is the most modern in equipment. It is the only line running luxurious club room cars. It is the only line serving meals on the a la carte plan. Through the GRANDEST SCENERY in America by Daylight.
Attractive tours during the season of navigation on Great Lakes via Duluth in connection with the magnificent passenger steamers Northwest and Northland.

For maps, tickets and complete information call on or address S. F. & N. Ry. agents, or

C. G. DIXON, General Agent, Spokane, Wash.
F. I. WHITNEY, G. P. & T. A. St. Paul, Minn.

NORTHERN PACIFIC

THE FAST LINE SUPERIOR SERVICE.
Through tickets to all points in the United States and Canada.

Direct Connection with the Spokane Falls and Northern Railway.
Trains depart from Spokane: No. 1, west bound, 8:25 p. m. No. 2, east bound, 7:00 a. m.

Tickets to Japan and China via Tacoma and Northern Pacific S. S. Co.
For information, time cards, maps and tickets apply to agents of the S. F. & N. and its connections, or General Agent, Spokane, Wash.

A. D. CHARLTON, Ass't. Gen'l. Pass. Agent, No. 25 Morrison St., Portland, Ore.
Write for map of the Kootenay country.

Spokane Falls & Northern

Nelson & Fort Sheppard R'y RED MOUNTAIN RAILWAY
The Only Route to Trail Creek
And the Mineral Districts of the Colville Reservation, Nelson, Kaslo, Kootenay Lake and Slocan points.

DAILY EXCEPT SUNDAY, BETWEEN SPOKANE, ROSSLAND AND NELSON.
LEAVE SPOKANE ARRIVE
7:00 a. m. ROSSLAND 10:40 p. m.
8:10 a. m. NELSON 6:00 p. m.
8:00 a. m. SPOKANE 6:00 p. m.

No change of cars between Spokane and Rossland.
Close connections at Nelson with steamers for Kaslo and all Kootenay lake points. Passengers for Kettle river and Boundary creek connect at Marcus with stage daily.

MINING
THIRTY-SEVENTH YEAR. ♦ ♦ ♦
♦ ♦ WORLD-WIDE CIRCULATION ♦ ♦ ♦
Twenty Pages, Weekly; Illustrated.
INDISPENSABLE TO MINING MEN.
THREE DOLLARS PER YEAR, POSTPAID.
SAMPLE COPIES FREE.
MINING AND SCIENTIFIC PRESS,
220 MARKET ST., SAN FRANCISCO, CAL.

C. J. WALKER,
108 Bishopsgate St., LONDON, ENG
London Agent of The Rossland Miner

Receives advertisements of all kinds for European press. Rates quoted. Contracts at special prices.

J. L. PARKER, Consulting Mining Engineer.
JOSEPH B. DABNEY, Financial Agent.
Cable Address, "Parker," Rossland. Morning & Neal's and Bedford McNeill's Codes

DABNEY & PARKER, Mines and Mining.
Mines examined and reported on. Special attention given to the placing of mining properties and the management of mines.
Box 64, Rossland, B. C.

Two Dollars PILOT BAY

Report at Kaslo Grant People B

ARGO HAS BE

Contractors Pushed Wagon Roads Committed to Numerous Small

KASLO, June 15.—Ernor Grant and Omaha & Grant Braden brothers, the active of the same on Kootenay lake on Sunday morning. Their visit has been portance as it is no close inspection of and Pilot Bay smelting arrangements.

George A. Carlson Jackson creek wagon road arrangement. The entire property of the sale which the Bank of Montreal not been announced. Grant company is in and in taking hold of the same in country. It has taken of the Slocan Star and has also been other Slocan ores.

George A. Carlson Jackson creek wagon road arrangement. The entire property of the sale which the Bank of Montreal not been announced. Grant company is in and in taking hold of the same in country. It has taken of the Slocan Star and has also been other Slocan ores.

George A. Carlson Jackson creek wagon road arrangement. The entire property of the sale which the Bank of Montreal not been announced. Grant company is in and in taking hold of the same in country. It has taken of the Slocan Star and has also been other Slocan ores.

George A. Carlson Jackson creek wagon road arrangement. The entire property of the sale which the Bank of Montreal not been announced. Grant company is in and in taking hold of the same in country. It has taken of the Slocan Star and has also been other Slocan ores.

George A. Carlson Jackson creek wagon road arrangement. The entire property of the sale which the Bank of Montreal not been announced. Grant company is in and in taking hold of the same in country. It has taken of the Slocan Star and has also been other Slocan ores.

George A. Carlson Jackson creek wagon road arrangement. The entire property of the sale which the Bank of Montreal not been announced. Grant company is in and in taking hold of the same in country. It has taken of the Slocan Star and has also been other Slocan ores.

George A. Carlson Jackson creek wagon road arrangement. The entire property of the sale which the Bank of Montreal not been announced. Grant company