

**CIHM
Microfiche
Series
(Monographs)**

**ICMH
Collection de
microfiches
(monographies)**



Canadian Institute for Historical Microreproductions / Institut canadien de microreproductions historiques

© 1998

Technical and Bibliographic Notes / Notes techniques et bibliographiques

The Institute has attempted to obtain the best original copy available for filming. Features of this copy which may be bibliographically unique, which may alter any of the images in the reproduction, or which may significantly change the usual method of filming are checked below.

- Coloured covers / Couverture de couleur
- Covers damaged / Couverture endommagée
- Covers restored and/or laminated / Couverture restaurée et/ou pelliculée
- Cover title missing / Le titre de couverture manque
- Coloured maps / Cartes géographiques en couleur
- Coloured ink (i.e. other than blue or black) / Encre de couleur (i.e. autre que bleue ou noire)
- Coloured plates and/or illustrations / Planches et/ou illustrations en couleur
- Bound with other material / Relié avec d'autres documents
- Only edition available / Seule édition disponible
- Tight binding may cause shadows or distortion along interior margin / La reliure serrée peut causer de l'ombre ou de la distorsion le long de la marge intérieure.
- Blank leaves added during restorations may appear within the text. Whenever possible, these have been omitted from filming / Il se peut que certaines pages blanches ajoutées lors d'une restauration apparaissent dans le texte, mais, lorsque cela était possible, ces pages n'ont pas été filmées.
- Additional comments / Commentaires supplémentaires:

L'Institut a microfilmé le meilleur exemplaire qu'il lui a été possible de se procurer. Les détails de cet exemplaire qui sont peut-être uniques du point de vue bibliographique, qui peuvent modifier une image reproduite, ou qui peuvent exiger une modification dans la méthode normale de filmage sont indiqués ci-dessous.

- Coloured pages / Pages de couleur
- Pages damaged / Pages endommagées
- Pages restored and/or laminated / Pages restaurées et/ou pelliculées
- Pages discoloured, stained or foxed / Pages décolorées, tachetées ou piquées
- Pages detached / Pages détachées
- Showthrough / Transparence
- Quality of print varies / Qualité inégale de l'impression
- Includes supplementary material / Comprend du matériel supplémentaire
- Pages wholly or partially obscured by errata slips, tissues, etc., have been refilmed to ensure the best possible image / Les pages totalement ou partiellement obscurcies par un feuillet d'errata, une pelure, etc., ont été filmées à nouveau de façon à obtenir la meilleure image possible.
- Opposing pages with varying colouration or discolourations are filmed twice to ensure the best possible image / Les pages s'opposant ayant des colorations variables ou des décolorations sont filmées deux fois afin d'obtenir la meilleure image possible.

This item is filmed at the reduction ratio checked below /
Ce document est filmé au taux de réduction indiqué ci-dessous.

10x		14x		18x		22x		26x		30x	
<input type="checkbox"/>	<input type="checkbox"/>	<input type="checkbox"/>	<input type="checkbox"/>	<input type="checkbox"/>	<input type="checkbox"/>	<input type="checkbox"/>	<input type="checkbox"/>	<input checked="" type="checkbox"/>	<input type="checkbox"/>	<input type="checkbox"/>	<input type="checkbox"/>
	12x		16x		20x		24x		28x		32x

The copy filmed here has been reproduced thanks to the generosity of:

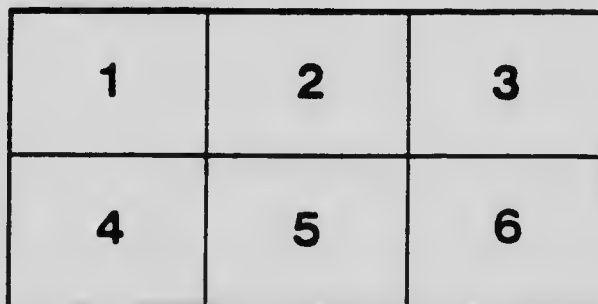
National Library of Canada

The images appearing here are the best quality possible considering the condition and legibility of the original copy and in keeping with the filming contract specifications.

Original copies in printed paper covers are filmed beginning with the front cover and ending on the last page with a printed or illustrated impression, or the back cover when appropriate. All other original copies are filmed beginning on the first page with a printed or illustrated impression, and ending on the last page with a printed or illustrated impression.

The last recorded frame on each microfiche shall contain the symbol \rightarrow (meaning "CONTINUED"), or the symbol ∇ (meaning "END"), whichever applies.

Maps, plates, charts, etc., may be filmed at different reduction ratios. Those too large to be entirely included in one exposure are filmed beginning in the upper left hand corner, left to right and top to bottom, as many frames as required. The following diagrams illustrate the method:



L'exemplaire filmé fut reproduit grâce à la générosité de:

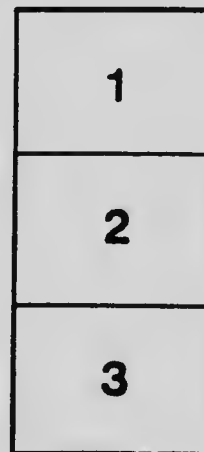
Bibliothèque nationale du Canada

Les images suivantes ont été reproduites avec le plus grand soin, compte tenu de la condition et de la netteté de l'exemplaire filmé, et en conformité avec les conditions du contrat de filmage.

Les exemplaires originaux dont la couverture en papier est imprimée sont filmés en commençant par le premier plat et en terminant soit par la dernière page qui comporte une empreinte d'impression ou d'illustration, soit par le second plat, selon le cas. Tous les autres exemplaires originaux sont filmés en commençant par la première page qui comporte une empreinte d'impression ou d'illustration et en terminant par la dernière page qui comporte une telle empreinte.

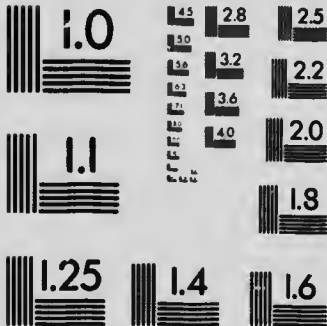
Un des symboles suivants apparaîtra sur la dernière image de chaque microfiche, selon le cas: le symbole \rightarrow signifie "A SUIVRE", le symbole ∇ signifie "FIN".

Les cartes, planches, tableaux, etc., peuvent être filmés à des taux de réduction différents. Lorsque le document est trop grand pour être reproduit en un seul cliché, il est filmé à partir de l'angle supérieur gauche, de gauche à droite, et de haut en bas, en prenant le nombre d'images nécessaire. Les diagrammes suivants illustrent la méthode.



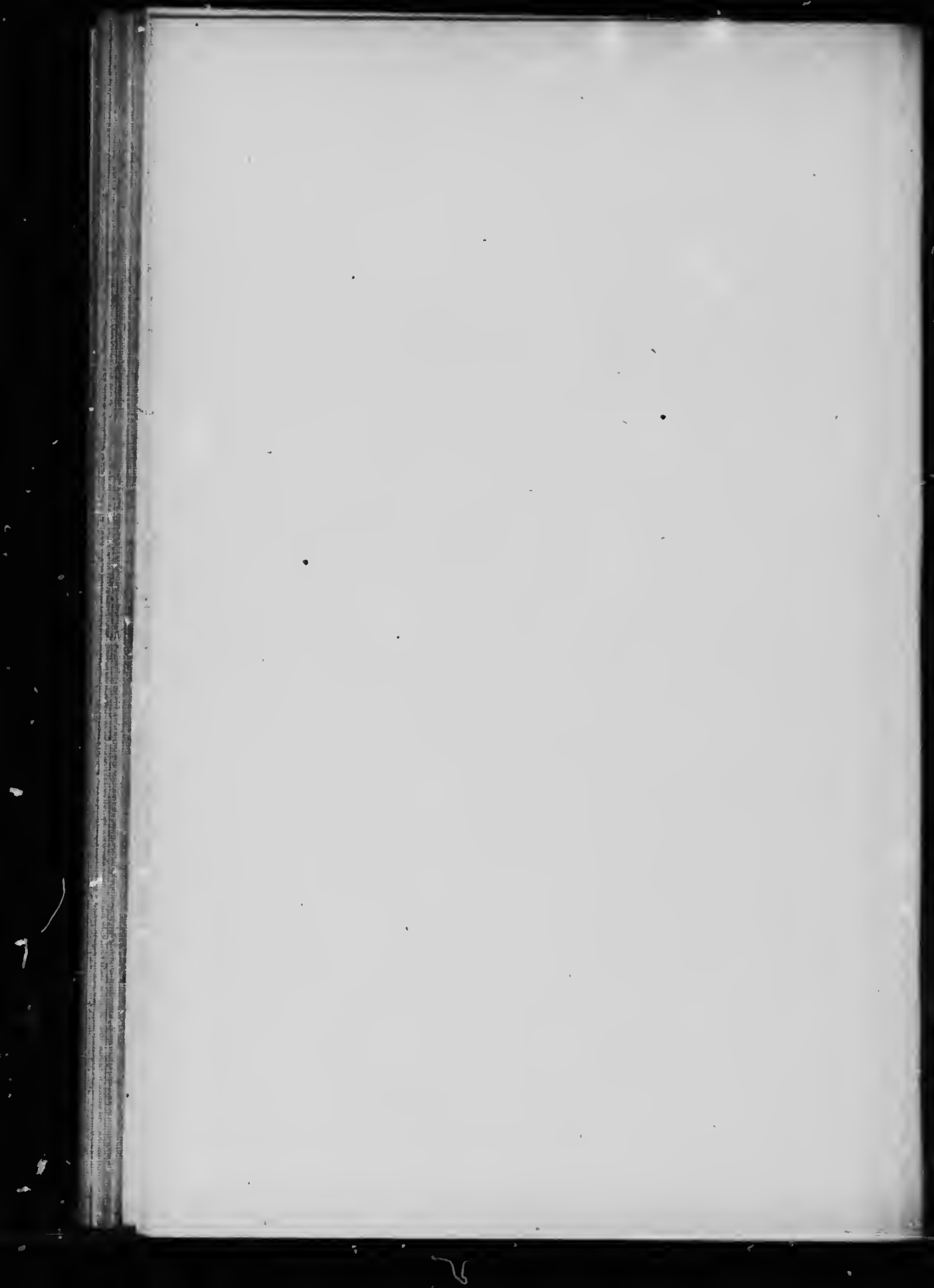
MICROCOPY RESOLUTION TEST CHART

(ANSI and ISO TEST CHART No. 2)



APPLIED IMAGE Inc

1653 East Main Street
Rochester, New York 14609 USA
(716) 482 - 0300 - Phone
(716) 288 - 5989 - Fax



LABORATORY
OF THE
INLAND REVENUE DEPARTMENT

OTTAWA, CANADA

BULLETIN No. 357

CANNED TOMATOES

NOTES AND COMMENTS.

Under this heading, as occasion arises, the Bulletins issued by this Department will contain, as an appendix, such comment as may seem necessary or advisable upon matters relating to the work of the Department in connection with the administration of the Adulteration Act, the Fertilizers Act, the Feeding Stuffs Act or the Proprietary Medicines Act.

It frequently happens that correspondents ask information regarding the above Acts, of such a nature that the matter in question possesses general interest, and comment upon it would prove acceptable and useful to others than the immediate questioner. In such cases the reply may find a place in these columns. For convenience of reference these notes will be numbered in series.

A. MCGILL,
Chief Analyst.

LABORATORY
OF THE
INLAND REVENUE DEPARTMENT
OTTAWA, CANADA

BULLETIN No. 357

CANNED TOMATOES

OTTAWA, 23rd NOVEMBER, 1916.

J. U. VINCENT, Esq.,
Deputy Minister of Inland Revenue,

SIR,—I have the honour to hand you a report upon Canned Tomatoes, as purchased by our inspectors in February, March and April of this year.

Without exception the contents of these cans proved to be sound and good; and it is evident that care had been taken to employ only fruit of good quality in their preparation.

As in the inspection of 1912 (see Bulletin No. 246), the cans in which these tomatoes are packed, represent three sizes, which may be designated as large, medium and small.

<i>Large size</i> , from 950 to 1,050 cubic centimetres, or approximately from 34 to 37 ounces.	199 samples. . .
<i>Medium size</i> , from 850 to 875 cubic centimetres, or approximately 31 ounces.	27 “
<i>Small size</i> , about 600 cubic centimetres, or approximately 21 ounces.	6 “

The small size tins are only found in Western Canada, 1 sample having been obtained in Manitoba and 5 samples in British Columbia.

The medium size appears also to be characteristic of Western Canada, 1 sample was found in the Eastern Townships, 1 in Ontario, 6 in Alberta, and 19 in British Columbia.

The subject matter of this report represents 88 different brands of Canned Tomatoes. By far the larger number of these are put up in tins of 34 to 37 ounces capacity, usually known as two pound tins.

Of course the value furnished to the consumer is dependent upon the content of actual fruit; and while it is a matter of great difficulty to determine this with any high degree of exactness, the method employed by us is probably as satisfactory as any that could be devised.

In all of the samples now reported, the gross weight of the tin and contents has first been ascertained. The whole contents are then turned out upon a piece of cheese cloth, of known weight, spread upon a sieve of six inches diameter, and allowed to drain for approximately two hours, without pressure, or until drops fall at intervals, of more than 5 seconds. The weight of residual solids is determined either by direct weighing, or by deducting the weight of the separated water.

The following method has been tentatively recommended by the Association of Official Agricultural Chemists of the U.S.A. (See Journal, August 15, 1915, p. 185).

"The preparation of the sample for analysis depends upon the character of the product and the determinations to be made. Samples in which only the solid or liquid portion is required should be treated as follows: Weigh the full can, open, pour off the liquid, allow the solid portion to drain for a minute, re-weigh the can and drained vegetables, then remove the solid portion and weigh the dry, empty can. The method selected for draining the vegetables is dependent upon the nature and condition of the sample. In most cases it is sufficient to cut around the cover and before turning it back allow the liquor to drain through the slit. Whenever a portion of the solid material would escape with the liquor by this procedure, drain upon a piece of cheesecloth. From the weights thus obtained determine the percentage of liquid and solid contents."

The difficulty of defining a perfectly satisfactory method of working has delayed the adoption of regulations in the matter of Canned Tomatoes. The U.S.A., Bureau of Chemistry, under date 11 Oct. 1916 (see Service and Regulatory Announcements No. 184) makes the following statement:

"Since Circular 38 was issued, there are being produced in increasing quantities, tomato products of varying degrees of concentration. The Department is considering the adoption of a scale for testing tomato products, varying with the degree of concentration. If it is decided to adopt such a scale, public announcement will be given."

The information given by the report now handed to you, together with that supplied in Bulletin No. 246, should enable your Advisory Board to proceed intelligently in the matter of recommending action under Section 26 of the Adulteration Act, should action be considered necessary.

In order to a more convenient study of these data, I have arranged them in parallel columns with the corresponding results obtained in 1912 and published in Bulletin No. 246.

Most of the brands named are put up only in cans of large size. A small number of brands are put up only in medium and small sized cans. The following list, which includes samples inspected in 1912 as well as those now reported, shows the brands which are packed variously.

TABLE I.

Brands of Canned Tomatoes put up in tins of differing size. Inspections of 1912 and 1916.

Brand Name.	Large size.	Medium.	Small.	Total.
Big.....	1	0	1	2
British Canadian.....	2	0	1	3
Canada First.....	7	3	1	11
E. D. S.	3	0	1	4
Fretz.....	1	1	0	2
Kelowna.....	0	1	2	3
Lynn Valley.....	17	1	0	18
Maple Leaf.....	10	2	0	12
Orchard City.....	3	2	0	5
Prairie.....	5	1	0	6
Pride Niagara Falls.....	1	1	0	2
Pure Food.....	0	1	0	1
Quaker.....	6	7	3	16
Red Feather.....	1	1	0	2
Royal City.....	0	2	1	3
Standard of Empire.....	1	2	0	3
Thistle.....	5	4	0	9
Totals.....	63	29	10	102

Mountain Crest is put up in the small size only, and the following brands, in medium size only, so far as our inspections show: viz:—

Meco, Talisman, Alamo, Bear, Bohemian, Cutting P. Co., Del Monte, Finest, Faultless, Gold Medal Malkins Best, North Star, Sunshine.

TABLE II.

The following table gives the weight of the contents of small size tins. This weight refers to the solids determined as already described, and is stated in ounces.

Brand.	Number of Samples.		Total.	Weight of Contents.
	1912.	1916.		
Big	1	0	1	9.5
British Canadian	0	1	1	10.0
Canada First	0	1	1	8.2
E. D. S.	1	0	1	14.4
Kelowna	2	0	2	12.0*
Mountain Crest	0	1	1	10.5
Quaker	1	2	3	8.6*
Royal City	0	1	1	8.0
Totals	5	6	11	10.1*

* Mean.

TABLE III.

Samples contained in Medium size tins.

Brand.	Number of Samples.		Total.	Weight of Contents.
	1912.	1916.		
Alamo	1	0	1	16.9
All Gold	1	0	1	18.8
Bear	2	0	2	16.9
Bohemian	3	0	3	16.5
Canada First	2	1	3	14.6
Cutting P. Co.	2	0	2	17.3*
Del Monte	0	1	1	16.6
Faultless	1	0	1	12.9
Finest	0	1	1	14.0
Fretz	0	1	1	14.5
Gold Medal	0	2	2	11.8*
Kelowna	1	0	1	20.8
Lynn Valley	1	0	1	14.3
Malkins' Best	0	2	2	11.7*
Maple Leaf	0	2	2	12.5
Meco	1	0	1	13.8
North Star	0	1	1	14.3
Orchard City	0	2	2	13.2*
Prairie	0	1	1	13.3
Pride N. Falls	0	1	1	17.8
Pure Food	0	1	1	10.6
Quaker	4	3	7	14.7*
Red Feather	0	1	1	14.2
Royal City	0	2	2	14.5
Standard of Empire	0	2	2	12.4*
Sunshine	0	1	1	13.3
Talisman	2	0	2	12.9*
Thistle	2	2	4	14.4*
Totals	23	27	50	14.7*

* Mean.

TABLE IV.
Samples packed in large size tins.

Brand.	1912.	1916.	Total.	Solids ounces.
1 Air Ship.....	3	0	3	14.3°
2 Alexandra.....	0	2	2	14.3°
3 Anchor.....	0	1	1	12.5
4 Bell Cow.....	3	0	3	16.6°
5 Big.....	1	0	1	20.8
6 Bloomfield.....	1	0	1	20.2
7 Boothe.....	1	0	1	19.4
8 Boulter.....	2	0	2	18.7°
9 Britannia.....	0	3	3	11.5°
10 British Canadian.....	0	2	2	15.1°
11 Burlington.....	0	1	1	15.0
12 Canada First.....	0	7	7	15.9°
13 Canada's Pride.....	2	0	2	19.8°
14 Canned Foods.....	0	2	2	15.7°
15 Clark.....	1	0	1	22.4
16 Colonist.....	0	1	1	14.2
17 Cottage.....	0	1	1	15.2
18 Crusader.....	0	7	7	15.4°
19 D. A. H.....	0	1	1	13.7
20 Degruchy.....	1	0	1	19.9
21 Dominion.....	0	1	1	13.5
22 Donalco.....	0	1	1	14.7
23 Dove.....	0	1	1	13.2
24 Dundee.....	0	1	1	16.5
25 E. D. S.....	1	2	3	16.4°
26 Edisons.....	0	1	1	15.5
27 Elgin.....	0	1	1	16.5
28 Essex.....	2	2	4	17.4°
29 Farmer.....	0	1	1	13.0
30 First Pick.....	0	2	2	20.9°
31 F. F. V.....	1	0	1	22.9
32 Fleur de lis.....	0	5	5	13.9°
33 Foote's Best.....	1	0	1	12.8
34 Frankford.....	0	3	3	17.6°
35 Fretz.....	0	1	1	18.1
36 Frontenac.....	0	3	3	16.2°
37 Garden City.....	1	1	2	17.1°
38 Gabelle.....	2	4	6	16.6°
39 Glenrose.....	2	0	2	22.0°
40 Gold.....	1	0	1	18.2
41 Gold Bond.....		3	3	16.1°
42 Golden West.....		1	1	16.0
43 Grand River.....	1	1	2	15.0°
44 Groves.....	0	2	2	15.0°
45 Harvest.....	0	4	4	16.6°
46 Harvester.....	1	0	1	16.4
47 Highlander.....	4	1	5	19.4°
48 Home Grown.....	1	0	1	21.6
49 Horseshoe.....	0	1	1	14.8
50 Hygeian.....	0	3	3	16.6°
51 Ice Castle.....	1	0	1	19.0
52 King Lake.....	0	1	1	15.2
53 Lasso.....	3	0	3	17.6°
54 Lily Vale.....	0	1	1	13.5
55 Lion.....	1	14	15	14.5°
56 Little Chief.....	8	21	29	15.4°
57 Log Cabin.....	0	6	6	15.4°
58 Lynn Valley.....	7	11	18	16.3°
59 Lucky Horseshoe.....	1	0	1	20.5
60 Maple Leaf.....	5	5	10	16.9°

* Mean.

Brand.	1912.	1916.	Total.	Solids ounces.
61 Meadow Sweet	1	0	1	19.7
62 Milden	1	0	1	20.4
63 Monarch	0	1	1	16.0
64 Northern	0	2	2	15.2
65 No Vary	0	2	2	17.7*
66 Old Arm Chair	0	5	5	14.0*
67 Old Church	0	1	1	16.3
68 Old Homestead	5	2	7	17.5*
69 Old Mill	0	1	1	16.0
70 Old Oak	0	1	1	15.2
71 Old Orchard	0	4	4	17.5*
72 Old Scout	2	0	2	17.8
73 Orchard City	1	2	3	16.6*
74 Oxford Choice	0	1	1	16.3
75 Parliament	0	2	2	12.8*
76 Peerless	2	0	2	18.0
77 Pelham	1	1	2	18.1*
78 Perfection	0	1	1	15.0
79 Pointer	1	0	1	19.0
80 Prairie	5	0	5	19.3*
81 Pride of Golden Hill	1	0	1	19.2
82 Pride of Niagara Falls	0	1	1	17.0
83 Primus	0	1	1	13.5
84 Prince Edward Pride	4	1	5	18.3*
85 Princess	1	1	2	17.7*
86 Prosperity	0	1	1	15.2
87 Prospectors	0	6	6	15.0*
88 Pure Food	1	0	1	22.3
89 Puritan	1	1	2	18.6*
90 Quaker	3	3	6	17.1*
91 Queen	0	1	1	15.5
92 Red Feather	0	1	1	14.5
93 Riverside	0	2	2	17.0*
94 Rose Hill	1	0	1	17.9
95 Royal	1	0	1	15.5
96 Sanitary	2	0	2	17.8*
97 Shield	2	0	2	17.1*
98 Standard of Empire	0	1	1	14.2
99 Star	1	0	1	19.6
100 St. Lawrence	0	2	2	14.5*
101 Sunset	1	1	2	19.1*
102 Swiss Bell	0	2	2	15.7*
103 Tartan	2	1	3	15.7*
104 Taurin	0	1	1	20.0
105 Tecumseh	0	5	5	17.9*
106 Thistle	2	3	5	16.0*
107 Three Stars	1	0	1	16.5
108 Triangle	0	1	1	13.5
109 Union	3	0	3	20.8
110 Vallee de Richelieu	0	1	1	14.5
111 Victoria	0	1	1	14.0
112 Vine	2	6	8	17.4*
113 Vulcan	0	1	1	13.5
114 White Rose	0	1	1	13.5

* Mean.

In many of the 114 brands reported in Table IV, where more than a single sample has been examined, great variability in the quantity of solids has been observed. I have selected a few of the brands—those in which at least six samples have been examined—in illustration of this variability.

TABLE V.

Name of Brand.	Total samples.	Solids (ounces).		
		Maximum.	Minimum.	Mean.
Canada First	7	16.5	15.3	15.9
Crusader.....	7	17.5	13.7	15.4
Gazelle.....	6	20.2	15.3	16.6
Lion.....	15	18.1	12.0	14.5
Little Chief.....	29	22.0	11.2	15.4
Log Cabin.....	6	16.0	14.5	15.4
Lynn Valley.....	18	23.2	14.2	16.9
Maple Leaf.....	10	24.3	12.3	16.9
Old Homestead.....	7	20.8	15.0	17.5
Prospectors.....	6	17.2	14.6	15.0
Quaker.....	6	19.0	15.0	17.1
Vine.....	8	22.5	14.0	17.4

The extremely large variation in amount of fruit solids contained in tins of similar size, and similar selling value, is noteworthy. If such differences are necessitated by the nature of the process of packing tomatoes, then surely there is great room for improvement in this art.

In Bulletin No. 246 I ventured to recommend that a minimum weight of fruit solids should be legalized for each size of can, and suggested the following:

For large size cans.....	20	ounces.
“ medium “ “	17	“
“ small “ “	12.5	“

It will be seen from Table V, that the suggested maximum for large sized tins is reached by six brands only, and this only as an exception; the mean contents for these six brands being 16.6; 15.4; 16.9; 16.9; 17.5; 17.4 ounces. It may be that the suggested minimum was too high.

The whole subject demands further consideration; and it is in the belief that the facts now recorded may be helpful in enabling a just conclusion to be reached that I would respectfully advise publication of this report as Bulletin No. 357.

I have the honour to be Sir,
Your obedient servant,

A. MCGILL,
Chief Analyst.

BULLETIN No. 357—

Date of Collection.	Nature of Sample.	No. of Sample.	Name and Address of Vendor.	Cost.		Name and Address of Manufacturer or Furnisher as given by the Vendor.	
				Quantity.	Cents.	Manufacturer.	Furnisher.

DISTRICT OF NOVA SCOTIA—

1916.							
Mar. 15	Canned Tomatoes.	6441	Wm. Law & Co., Yarmouth, N.S.	3 tins.	36	Simcoe Canning Co., Simcoe, Ont.
" 16	"	6442	R. F. Caldwell, Kentville, N.S.	3 "	38	O. C. Miller, Picton, Ont.
" 16	"	6443	Yarxas, Kentville, N.S.	3 "	38	Consecon Canning Co., Consecon, Ont.
" 16	"	6444	Cross & De Wolfe, Kentville, N.S.	3 "	38	G. E. Barbour, St. John, N.B.
" 29	"	6445	Wentzell's, Ltd., Halifax, N.S.	3 "	30	Brit. Can. Canning Co., Hamilton.
" 29	"	6446	John Tobin & Co., Halifax, N.S.	3 "	32	Bloomfield Packing Co., Bloomfield, Ont.
" 29	"	6447	J. L. Wilson, Halifax, N.S.	3 "	36	Miller Co., Trenton, Ont.
" 31	"	6448	B. O. Bishop, Dartmouth, N.S.	3 "	38	Beaver Canning Co., Bloomfield, Ont.
" 31	"	6449	C. McNabb, Dartmouth, N.S.	3 "	36	Port Dalhousie Canning Co., Port Dalhousie, Ont.
Apr. 7	"	6450	Allison's, Ltd., Halifax, N.S.	3 "	26	Ont. Cannery Assoc., Simcoe, Ont.

DISTRICT OF CAPE BRETON—

Apr. 28	Canned Tomatoes.	63834	H. V. Raymond, Sydney, C.B.	3 tins.	45	Simcoe Canning Co., Simcoe, Ont.
" 28	"	63835	F. & J. Morley, Sydney, C.B.	3 "	38	Fretz, Ltd., Hamilton, Ont.
" 28	"	63836	J. F. Miles, Sydney, C.B.	3 "	38	Frankford Canning and Preserving Co., Frankford, Ont.

DISTRICT OF NEW BRUNSWICK—

Mar. 2	Canned Tomatoes.	69301	J. I. Davis & Son, St. John, N.B.	3 tins.	36	Don. Cannery, Ltd., Hamilton.
" 2	"	69302	Two Barkers, Ltd., St. John, N.B.	3 "	30	Frankford Can. and Pres. Co., Frankford, Ont.
" 2	"	69303	W. A. Simonds, St. John, N.B.	3 "	31	Delhi F. and V. Co., Ltd., Delhi, Ont.
" 3	"	69304	M. E. Grass, St. John, N.B.	3 "	36	Old Homestead Can. Co., Ltd., Picton, Ont.
" 14	"	69305	M. Doohan, Fredericton, N.B.	3 "	36	Simcoe Canning Co., Simcoe, Ont.

CANNED TOMATOES.

Inspector's Report. (Is not an expression of opinion.)	Brand from Label.	Results of Analysis.					No. of Sample.	Remarks and Opinion of the Chief Analyst.
		Net Weight, Ounces.	Capacity of T ⁿ cc.	Water, Ounces.	Solids, Ounces.	Condition.		

R. J. WAUGH, INSPECTOR.

Lynn Valley Brand.....	Lynn Valley.....	33.5	1025	17.8	15.7	Good...	64441
Little Chief ".....	Little Chief.	33.3	1030	17.2	16.1	"	64442
Riverside ".....	Riverside.....	35.3	1016	17.9	17.4	"	64443
Gold ".....	Gold Bond.....	33.7	1020	17.9	15.8	"	64444
British Canadian Brand.	British Canadian..	33.1	1030	17.6	15.5	"	64445
Quaker Brand.....	Quaker.....	33.2	1020	17.3	15.9	"	64446
Log Cabin Brand.....	Log Cabin.....	34.0	1000	18.2	15.8	"	64447
Old Orchard Brand.....	Old Orchard ...	34.2	1030	14.1	20.1	"	64448
Harvest ".....	Harvest.....	35.2	1010	16.9	18.3	"	64449
First Pick ".....	First Pick.....	34.2	1015	10.9	23.3	"	64450

E. F. MACKEEN, INSPECTOR.

.....	Lynn Valley.....	33.0	1015	17.9	15.1	Good...	63834
.....	Harvest.....	35.1	1020	19.3	15.8	"	63835
.....	Frankford.....	32.2	1010	15.8	16.4	"	63836

JOHN C. FERGUSON, INSPECTOR.

.....	Gold Bond.....	33.6	1025	18.3	15.3	Good...	69301
.....	Frankford.....	34.6	1000	14.4	20.2	"	69302
.....	Maple Leaf.....	33.3	1025	16.4	16.9	"	69303
.....	Old Homestead...	33.1	1025	17.2	15.9	"	69304
Lynn Valley.....	Lynn Valley....	33.5	1030	16.4	17.1	"	69305

BULLETIN No. 357—

Date of Collection.	Nature of Sample.	No. of Sample.	Name and Address of Vendor.	Cost.		Name and Address of Manufacturer or Furnisher, as given by the Vendor.	
				Quantity.	Cents.	Manufacturer.	Furnisher.

DISTRICT OF NEW BRUNSWICK—

1916.							
Mar. 14	Canned Tomatoes.	69306	G. T. Whelpley, Fredericton, N.B.	3 tins	36	Aylmer Can. Co., Ltd., Aylmer, Ont.	
" 15	"	69307	J. Rankin Brown, Woodstock, N.B.	3 "	45		G. E. Barbour Co., Ltd., St. John.
" 21	"	69308	Sussex Mercantile Co., Sussex, N.B.	3 "	45	Brighton Can. Co. Ltd., Brighton, Ont.	
" 21	"	69309	Mills, Eveleigh, Ltd., Sussex, N.B.	3 "	40	F. R. Lalor Can. Co., Dunnville, Ont.	
" 22	"	69310	Reed Co., Ltd., Moncton, N.B.	3 "	35	Delhi F. and V. Can. Co., Ltd., Delhi, Ont.	

DISTRICT OF QUEBEC CITY—

Feb. 14	Canned Tomatoes.	56653	V. Lacasse, 7 St. Clair, Quebec.	3 tins	30	A. C. Miller Co., Pictou, Ont.	Whitehead & Turner Co.
" 14	"	56654	J. Rochette, 7 Deligny, Quebec.	3 "	30	Brit. Can. Canning Ltd., Hamilton.	J. B. Renaud Co.
" 16	"	56655	J. C. Paquet, 8 Sutherland, Quebec.	3 "	30	W. Boulter & Son, Pictou, Ont.	Turcotte Frere..
" 16	"	56656	R. Cantin, 32 St. Olivier, Quebec.	3 "	30	Beaver Can. Co., Bloomfield, Ont.	Turcotte Cie....
" 14	"	56657	N. Paquet, 17 Sutherland, Quebec.	3 "	30	L. L. Laurent, Quebec.	P. J. Bussiere ..
" 14	"	56658	A. Chabot, 23 St. Marie, Quebec.	3 "	30	Unknown ...	Quebec Preserving Co.
" 14	"	56659	P. T. Voyer, 220 Richelieu, Quebec.	3 "	30	Brantford C. and P. Co.	J. B. Renaud Cie.
" 16	"	56660	T. Jobin, 276 D'aguillon, Quebec.	2 "	30	Greer Bros., Wellington.	Kirouac Fils Cie.
" 16	"	56661	" " " "	3 "	30	Beaver C. Co., Ltd.	"
" 16	"	56662	W. Gagnon, 112 Artillerie, Quebec.	3 "	45	Frontenac, Patenaude, Carignan.	Patenaude Cie., Ltd.

DISTRICT OF QUEBEC PROVINCE—J. E. AUDET, O. BROCHU, N. CADIEUX,

Feb. 14	Canned Tomatoes.	5301	Dorchester Lumber Co., St. Malachi.	3 tins	30		Jos. Ward, Montreal.
" 15	"	5306	D. Tawel, St. Leon de Standon.	3 "	45		"
" 16	"	5308	J. Lachance, Ste. Justine.	3 "	45	Boulter	Quebec Preserving Co., Quebec
" 17	"	5309	M. Deshins, Ste. Germain	3 "	36		G. E. Couture, Levis.
" 18	"	5312	A. Cloutier, St. Odilon	3 "	45		Bernice, Scott, Beauce.
" 21	"	5313	J. T. Audet, St. Edward	3 "	30		Dorchester L Co., St. Malachi.

CANNED TOMATOES.

Inspector's Report. (Is not an expression of opinion).	Brand from Label.	Results of Analysis.					No. of Sample.	Remarks and Opinion of the Chief Analyst.
		Net Weight Ounces.	Capacity of Tin cc.	Water. Ounces.	Solids. Ounces.	Condition.		
<i>Concluded.</i>								
Canada First.....	Canada First.....	33.9	1015	17.4	16.6	Good...	69306	
Gold Bond.....	Gold Bond.....	34.1	1025	16.9	17.2	"...	69367	
Thistle.....	Thistle.....	33.5	1030	17.6	15.9	"...	69308	
Grand River.....	Grand River.....	30.8	1030	17.3	13.5	"...	69309	
.....	Maple Leaf.....	32.4	1030	16.4	16.0	"...	69310	

F. X. W. E. BELAND, INSPECTOR.

.....	Little Chief.....	33.3	1010	20.8	12.5	Good...	56653	
.....	Fleur de lis.....	33.5	1020	19.8	13.7	"...	56654	
.....	Lion.....	33.5	1020	21.5	12.0	"...	56655	
.....	Old Orchard.....	34.2	1025	17.2	17.0	"...	56656	
.....	Vine.....	32.0	1000	15.5	16.5	"...	56657	
.....	Domini n.....	33.7	1025	20.2	13.5	"...	56658	
.....	Crusader.....	33.0	1030	18.5	14.5	"...	56659	
.....	Greens.....	33.0	1015	17.3	15.7	"...	56660	
.....	Old Arm Chair...	32.0	975	18.5	13.5	"...	56661	
.....	Frontenac.....	34.9	1000	17.7	17.2	"...	56662	

T. GENDREAU, A. PELLETIER, J. H. RIOUX, TEMPORARY INSPECTORS.

.....	Prospectors.....	34.0	975	20.0	14.0	Good..	5301	
.....	33.3	1010	19.3	15.0	"...	5306	
.....	Lion.....	34.8	1015	22.3	12.5	"...	5308	
.....	Greens.....	33.7	1020	19.5	14.2	"...	5309	
.....	Prosperity.....	31.7	950	19.5	15.2	"...	5312	
.....	Prospectors.....	33.7	920	19.5	14.6	"...	5313	

Date of Collection.	Nature of Sample.	No. of Sample.	Name and Address of Vendor.	Cost.		Name and Address of Manufacturer or Furnisher as given by the Vendor.	
				Quantity.	Cents.	Manufacturer.	Furnisher.

DISTRICT OF QUEBEC PROVINCE—

1916.							
Feb. 22	Canned Tomatoes.	5316	A. St. Hilaire, St. Angus	3 tins.	30	Bernier, Scott, Beauce.
" 23	"	5317	L. Laflamme, Ste. Marguerite.	3 "	39	N. Rioux, Quebec.
" 24	"	5319	J. Dussault, St. Hedine	3 "	36	J. B. Renaud, Quebec.
" 26	"	5321	J. Fontaine, St. Isidore.	3 "	45	Carrier & Fils, Levis.
Mar. 23	"	4478	Theodore Bernard, St. Raphael.	3 "	33	Vineland Can Co., Vineland, Ont.
" 23	"	4471	A. E. Lamerre, St. Valier	3 "	30	Beaver Can. Co., Ltd., Bloomfield, Ont.
" 23	"	4472	J. A. Lemieux, St. Michel.	3 "	30	A. C. Miller & Co., Picton, Ont.
" 23	"	4474	Geo. Roy, St. Michel.	3 btes.	30	Canning Co., Bloomfield, Ont.
" 24	"	4477	Arthur Fradette, Armagh.	3 "	36	W. Boulter & Son, Picton, Ont.
" 24	"	4478	Onésime, Noël, Armagh.			" "
" 24	"	4479	Cleophas Beaudoin, Armagh.	3 "	36	Garden City Can. Co., St. Catharines, Ont.
" 24	"	4480	Mastay Boulanger, Armagh.	3 "	36	Quebec Preserving Co.
" 24	"	4482	" " "	3 "	36	" "
Feb. 16	"	381	Eugene Lacas, St. Jerome.	3 "	30	A. C. Miller & Co., Picton, Ont.
" 16	"	382	Alexandre Villeneuve, St. Jerome.	3 "	45	The C. Orser P. Co., Colborne, Ont.
" 16	"	384	Ovila Lawzon, St. Jerome.	3 "	30	Simcoe Can. Co., Simcoe, Ont.
" 16	"	386	Charlemagne Taillois, St. Jerome.	3 "	30	Hudon Hebert Co., Montreal.
" 17	"	388	Pierre Simard, St. Jerome.	3 "	30	Ont. Cannery, Sarnia, Ont.
" 12	"	72239	C. A. Carriveau, Montmagny.	3 "	45	W. Boulter & Son, Picton, Ont.
" 14	"	72241	Pierre Morin, Cap St. Ignace.	3 "	45	A. C. Miller, Picton, Ont.
" 17	"	72244	A. Prevost, St. Francois	3 "	45	W. Boulter & Son, Picton, Ont.
" 18	"	72246	A. Letourneau, St. Pierre.	3 "	45	A. C. Miller & Co., Picton, Ont.
" 28	"	72249	Jos. Boulet, Montmagny.	3 "	45	" "
" 2	"	72250	Jos. Fournier, St. Thoma	3 "	45	" "
" 16	"	4934	Joseph Morel, St. Rose, Temiscouata.	3 "	39	Frankford C. & P. Co., Frankford Ont.	J. B. Renaud, Quebec.
" 16	"	4935	Jos. Thibault, St. Rose, Temiscouata.	3 "	35	Simcoe Can. Co., Simcoe, Ont.	Thos. Langlais, Fraserville.
" 16	"	4936	Adolph Gagné, St. Rose, Temiscouata.	3 "	38	Brit. Can. C., Ltd., Hamilton, Ont.	J. B. Renaud, Quebec.
" 16	"	4937	Jean-Bte Dionne, St. Rose, Temiscouata.	3 "	36	A. C. Miller & Co., Picton, Ont.	Thos. Langlais, Fraserville.

CANNED TOMATOES.

Inspector's Report. (Is not an expression of opinion.)	Brand from Label.	Results of Analysis.					No. of Sample.	Remarks and Opinion of the Chief Analyst.
		Net Weight. Ounces.	Capacity of Tin cc.	Water. Ounces.	Solids. Ounces.	Condition.		

Continued.

		p.c.		p.c.	p.c.		
.....	Lion	33.5	950	17.5	16.0	Good ..	5316
.....	"	34.0	950	20.5	13.5	"	5317
.....	Crusader...	33.2	1000	19.5	13.7	"	5319
.....	Old Orchard.....	33.0	1020	16.8	16.2	"	5321
.....	Vine.....	33.5	1025	18.5	15.0	"	4468
.....	Old Arm Chair... . .	32.5	1030	13.5	13.0	"	4471
.....	Little Chief.....	33.2	1030	17.7	15.5	"	4472
.....	Farmer	33.5	1025	20.5	13.0	"	4474
.....	Lion	32.5	1020	20.0	12.0	"	4477
.....	"	34.5	1020	19.0	15.5	"	4478
.....	Garden City.....	32.0	1010	18.0	14.0	"	4479
.....	Old Armchair	32.5	1030	16.5	13.0	"	4480
.....	Lion	34.2	1010	18.7	15.5	"	4482
.....	Little Chief	33.2	1030	18.7	14.5	"	381
.....	Puritan.....	34.2	1020	16.6	17.6	"	382
.....	Lynn Valley.....	33.5	1020	16.0	17.5	"	384
.....	Gazelle.....	34.2	1010	17.2	17.0	"	386
.....	First Pick.....	33.8	975	15.3	18.5	"	388
.....	Lion	33.0	1020	17.5	15.5	"	72239
.....	Little Chief.....	33.7	1000	18.2	15.5	"	72241
.....	Lion	31.5	1010	17.8	16.7	"	72244
.....	Little Chief	32.7	1030	15.2	14.0	"	72246
.....	"	32.7	1010	19.5	12.5	"	72249
.....	"	34.0	1030	18.5	15.5	"	72250
.....	Crusader	33.5	1020	18.3	15.2	"	4934
.....	Lynn Valley	33.0	1015	17.4	15.0	"	4935
.....	Parliament.. . . .	32.0	1010	18.5	13.5	"	4936
.....	Little Chief.....	31.3	960	19.3	12.0	"	4937

Date of Collection.	Nature of Sample.	No. of Sample.	Name and Address of Vendor.	Cost.		Name and Address of Manufacturer or Furnisher as given by the Vendor.	
				Quantity.	Cents.	Manufacturer.	Furnisher.

DISTRICT OF QUEBEC PROVINCE—

1916.							
Feb. 16	Canned Tomatoes.	4938	Octave Litalier fils, St. Rose, Temiscouata.	3 boits	38	Simcoe C. Co., Simcoe, Ont.	
" 17	"	4940	Antoine David, Notre Dame du Lac.	3 "	38	Frankford C. & P. Co., Frankford, Ont.	J. B. Renaud, Quebec.
" 17	"	4912	Antoine Landry, Notre Dame du Lac.	3 "	36	Brit. Can. C., Ltd., Hamilton, Ont.	
" 17	"	4913	Pierre Cloutier, Notre Dame du Lac.	3 "	15	W. Boulter & Son, Picton, Ont.	
" 17	"	4944	Mad. P. A. Baubien, Notre Dame du Lac.	3 "	30	Simcoe C. Co., Simcoe, Ont.	Whitehead & Turner, Quebec
" 17	"	4915	Felix Simard, Notre Dame du Lac.	3 "	36	W. Boulter & Son, Picton, Ont.	
Mar. 8	"	72307	J. S. Boucher, Trois Pistoles.	3 "	36		
" 8	"	72308	Pascal Larrivee, Trois Pistoles.	3 "	36	Simcoe Canning, Ont.	
" 10	"	72312	J. A. Garneau, Rimouski.	3 "	36	Miller, Ont.	
" 10	"	72313	Couillard & Fils, Rimouski.	3 "	36	Brit. Can. Cannery, Ltd., Ont.	
" 11	"	72316	A. Bellavance, Rimouski.	3 "	36	A. C. Miller & Co., Picton, Ont.	
" 11	"	72319	J. E. Godbout, St. Fabien.	3 "	36	W. Boulter, Picton, Ont.	
" 11	"	72320	Pelletier & Belanger, St. Fabien.	3 "	30	Simcoe Canning, Ont.	
" 13	"	72321	J. O. Aubut, Bic.	3 "	38	Beaver C. Co., Ltd., Bloomfield, Ont.	
" 13	"	72323	L. O. Aubut, Bic.	3 "	36	"	
" 13	"	72324	Ernest D'evot, Bic.	3 "	36	W. Boulter, Picton, Ont.	

DISTRICT OF THREE RIVERS—

Feb. 10	Canned Tomatoes.	69232	L. J. Poulette, St. Thomas Joliette.	3 bxs.	30	A. C. Miller Co., Picton, Ont.	
" 10	"	69234	J. H. R. Deblois, St. Thomas Joliette.	3 "	45		Patenaude & Corrigan Co., Montreal.
" 11	"	69236	Philippe Gervais, Joliette.	3 "	36	A. C. Miller Co., Picton, Ont.	
" 11	"	69237	Camille Barrette, Joliette.	3 "	28	"	
" 11	"	69239	Amideo Cartier, Joliette.	3 "	31	"	
" 12	"	69241	J. H. Longoré, St. Gabriel Brandon.	3 "	30	Beaver C. Co., Bloomfield, Ont.	
" 12	"	69242	" " " "	3 "	30	"	
" 14	"	69246	J. A. Bellerose, St. Felix de Valois.	3 "	30	A. C. Miller, Picton, Ont.	
" 14	"	69247	G. H. Read, St. Felix de Valois.	3 "	30	Miller Co., Trenton, Ont.	
" 14	"	69249	Arthur Tessier, St. Felix de Valois.	3 "	30	A. C. Miller Co., Picton, Ont.	

CANNED TOMATOES.

Inspector's Report. (Is not an expression of opinion.)	Brand from Label.	Results of Analysis.					No. of Sample.	Remarks and Opinion of the Chief Analyst.
		Net Weight Ounces.	Capacity of Tin cc.	Water Ounces.	Solids Ounces.	Condition.		

Concluded.

	Lynn Valley.....	33.0	1020	17.5	15.5	Good...	4938
	Crusader.....	33.5	1000	17.5	15.0	"...	4940
	Parliament....	33.5	1010	21.5	12.0	"...	4942
	Lion.....	33.8	1050	21.3	12.5	"...	4943
	Lynn Valley.....	32.5	975	17.5	15.0	"...	4944
	Lion.....	33.7	1000	17.4	14.3	"...	4945
Northern Brand.....	Northern.....	32.5	1020	17.8	14.7	"...	72307
	Lynn Valley.....	31.0	1025	18.3	15.7	"...	72308
	Little Chief.....	32.5	1000	18.5	14.0	"...	72312
	Fleur de lis.....	32.0	950	18.5	13.5	"...	72313
	Little Chief....	33.0	1010	19.5	13.5	"...	72316
	Lion.....	33.2	1025	17.2	15.5	"...	72319
	Lynn Valley.....	33.5	1020	17.3	16.2	"...	72320
	Old Armchair....	32.5	1020	17.5	15.0	"...	72321
	Old Orchard....	32.0	1020	15.3	16.7	"...	72323
	Lion.....	33.2	1025	18.2	14.0	"...	72324

DR. V. P. LAVALLEE, INSPECTOR.

	Little Chief.....	32.5	1020	17.0	15.6	Good...	69232
	Frontenac.....	31.5	975	19.0	15.5	"...	69234
	Little Chief....	34.0	1020	19.7	14.3	"...	69236
	".....	33.0	975	17.2	15.8	"...	69237
	".....	33.5	975	18.0	15.6	"...	69 39
	Northern.....	33.9	1010	18.2	15.7	"...	69241
	Old Armchair....	33.5	975	18.0	15.5	"...	69242
	Little Chief....	33.5	1030	17.7	15.8	"...	69246
Log Cabin Brand.....	Log Cabin.....	33.7	1000	17.7	16.0	"...	69247
	Little Chief.....	34.0	1020	17.6	16.5	"...	69249

BULLETIN No. 357-

Date of Collection.	Nature of Sample.	No. of Sample.	Name and Address of Vendor.	Cost.		Name and Address of Manufacturer or Furnisher, as given by the Vendor.	
				Quantity.	Cents.	Manufacturer	Furnisher.

DISTRICT OF EASTERN TOWNSHIPS-

1916.							
Feb. 15.	Canned Tomatoes.	58271	Joseph Brodeau et Cie, St. Hyacinthe.	3 tins.	30		
" 15	" ..	58272	A. Marcotte, St. Hyacinthe	3 "	30		
" 15	" ..	58273	Edouard Cournoyer, "	3 "	30		
" 15	" ..	58274	August Halley, "	3 "	30		
" 15	" ..	58275	" "	3 "	30		
" 15	" ..	58276	A. Sincennes, "	3 "	30		
" 15	" ..	58277	A. Chabot, "	3 "	30		
" 23	" ..	58279	W. Jutras Co., "	3 "	30		
" 23	" ..	58279	Lassonde & Frere, "	3 "	30		
" 23	" ..	58280	" "	3 "	30		

DISTRICT OF MONTREAL-

Mar. 29	Canned Tomatoes.	67601	P. J. Rigan, 84 Centre St. Montreal.	3 tins.	30	A. C. Miller Co.	
" 29	" ..	67602	A. Dorais, 23 Centre St., Montreal.	3 "	33	Northport C. Co.	
" 29	" ..	67603	W. Chaplin, 18 Centre St., Montreal.	3 "	30	A. C. Miller Co.	
" 29	" ..	67901	J. H. Dupuis, 373 Wellington St., Montreal.	3 "	30	Frankford C. C.	
" 29	" ..	67605	J. Davin, 409 Wellington St., Montreal.	3 "	30	Miller & Co.	
" 30	" ..	67606	J. H. Gearey, 192 Centre St. Montreal.	3 "	30	The Essex C. Co.	
" 30	" ..	67607	Martin & Rebeau, 156 Wellington St., Montreal.	3 "	30	Hudon Herbert & Co.	
" 30	" ..	67608	N. Archaibeault, 290 Wellington St., Montreal.	3 "	30	Bergeron, Whissell & Co.	
" 30	" ..	67609	" "	3 "	30	A. Collier Co.	
" 30	" ..	67610	M. Sauve, 71 Richmond St., Montreal.	3 "	30	Valleyfield C. Co.	

DISTRICT OF VALLEYFIELD-

Feb. 22	Canned Tomatoes.	67590	W. Beaudry, Valleyfield, P. Q.	3 tins.	30		
" 22	" ..	67591	" "	3 "	30		
" 22	" ..	67592	" "	3 "	30		

CANNED TOMATOES.

Inspector's Report. (Is not an expression of opinion.)	Brand from Label.	Results of Analysis.					No. of Sample.	Remarks and Opinion of the Chief Analyst.
		Net Weight Ounces.	Capacity of Tin oz.	Water. Ounces.	Solids. Ounces.	Condition.		

J. J. COSTIGAN, ACTING INSPECTOR.

Log Cabin	Log Cabin	33.2	1000	18.7	14.5	Good...	58271
Riverside.....	Riverside.....	34.5	950	18.0	16.5	"	58272
Vallee du Richelieu.....	Vallee du Richelieu	34.2	950	19.7	14.5	"	58273
Lion.....	Lion.....	35.0	1040	21.5	13.5	"	58274
Finest	Canned Foods. .	30.0	875	16.0	14.0	"	58275
Fleur de Lis.....	Fleur de Lis.....	34.3	950	19.0	15.3	"	58276
Victoria.....	Victoria	33.5	1020	19.5	14.0	"	58277
Vine.....	Vine	32.5	950	18.5	14.0	"	58278
Princess	Princess.....	33.5	950	19.3	15.2	"	58279
Gazelle.....	Gazelle	34.4	1010	18.5	15.5	"	58280

D. J. KEARNEY, INSPECTOR.

Little Chief.....	Little Chief.....	33.5	1025	17.0	16.5	Good...	67601
Prospector's	Prospector's	34.0	1040	18.8	15.2	"	67602
Little Chief.....	Little Chief.....	33.0	1030	17.0	16.0	"	67603
Crusader.....	Crusader.....	33.2	1035	17.2	16.2	"	67604
Log Cabin.....	Log Cabin	32.5	1020	17.0	15.5	"	67605
Essex.....	Essex	31.5	1020	16.5	15.0	"	67606
Gazelle.....	Gazelle.....	33.2	1020	17.5	15.7	"	67607
Vulcan.	Vulcan.....	32.5	1020	19.0	13.5	"	67608
Perfection	Perfection	32.5	1015	17.5	15.0	"	67609
St. Lawrence.....	St. Lawrence.....	33.5	1020	19.3	14.2	"	67610

J. J. COSTIGAN, ACTING INSPECTOR.

Log Cabin	Log Cabin.....	35.7	1025	18.2	15.5	Good..	67590
Gazelle	Gazelle.....	34.0	1020	18.0	16.0	"	67591
Little Chief.....	Little Chief.....	34.5	1030	19.0	15.5	"	67592

BULLETIN No. 357—

Date of Collection.	Nature of Sample.	No. of Sample.	Name and Address of Vendor.	Cost.		Name and Address of Manufacturer or Furnisher as given by the Vendor.	
				Quantity.	Cents.	Manufacturer.	Furnisher.

DISTRICT OF VALLEYFIELD—

1910.							
Feb. 22	Canned Tomatoes.	67593	Richer & Page, Valleyfield, P.Q.	3 tins.	45		
" 22	" ..	67594	" " "	3 "	30		
" 22	" ..	67595	J. Z. Daoust, Valleyfield, P.Q.	3 "	30		
" 22	" ..	67596	" " "	3 "	30		
Mar. 2	" ..	67597	J. A. Tremblay & Cie, St. Lambert, P.Q.	3 "	30		
" 4	" ..	67598	J. Spier, St. John, P.Q.	3 "	36		
" 4	" ..	67599	J. B. Joubert, " "	3 "	30		

DISTRICT OF OTTAWA—

Feb. 18	Canned Tomatoes.	70677	The Shouldice Grocery Co. 25 Nicholas st., Ottawa.	3 tins	38	Lakeport Pres. Co., Lakeport, Ont.	
" 18	" ..	70678	" " "	3 "	38	Old Homestead C. Co., Picton, Ont.	
" 18	" ..	70679	" " "	3 "	38	Brit. Can. Co., Ltd., Hamilton, Ont.	
" 18	" ..	70680	Calderone & Bossio, Bank st., Ottawa.	3 "	38	A. C. Miller, Picton, Ont.	
" 18	" ..	70681	" " "	3 "	30	The Frankford C. & P. Co., Frankford.	
" 18	" ..	70682	" " "	3 "	60	Salvatore Minolfi, Naples, Italy.	
" 25	" ..	70689	S. Grandmison, Bank st., Ottawa.	3 "	45	Dom. Cannors, Ltd., Hamilton.	
" 25	" ..	70690	" " "	3 "	30	Brit. Can. Co., Ltd., Hamilton.	
" 25	" ..	70691	B. Pollock, Bank street, Ottawa.	3 "	33	Simcoe C. Co., Simcoe, Ont.	
" 26	" ..	70692	The British Store, Bank street, Ottawa.	3 "	33	Brighton C. Co., Brighton, Ont.	

DISTRICT OF KINGSTON—

Mar. 8	Canned Tomatoes.	73081	W. E. Hopkinson & Bros., Kingston.	3 tins.	39	John Walsley, Picton.	
" 8	" ..	73003	J. B. Hutchison, Kingston.	3 "	30	Horne C. Co., Bloomfield.	
" 8	" ..	73004	A. E. Donnelly, Kingston.	3 "	39	Belleville C. Co., Belleville, Ont.	
" 9	" ..	73008	H. A. Fairfield, Belleville.	3 "	30	Ameliasburg C. & P. Co., Rednersville.	
" 9	" ..	73011	Walbridge & Black, Belleville.	3 "	30	Burlington C. Co., Burlington, Ont.	
" 9	" ..	73012	The Wm Davies Co., Ltd., Belleville.	3 "	25	The Valley Can. Co., Ltd., Alveston, Ont.	
" 9	" ..	73013	A. W. Carwardine, Belleville.	3 "	30	Eby Elain Ltd., Toronto.	

CANNED TOMATOES.

Inspector's Report. (Is not an expression of opinion).	Brand (from Label).	Results of Analysis.					No. of Sample.	Remarks and Opinion of the Chief Analyst.
		Net Weight Ounces.	Capacity of Tin cc.	Water Ounces.	Solids Ounces.	Condition.		

Concluded.

Frontenac	Frontenac	34.5	1020	18.5	16.0	Good..	67503
St. Lawrence	St. Lawrence.....	33.7	1020	19.0	14.7	" ..	67504
Primera	Primera	33.0	1012	19.5	13.5	" ..	67505
Crusader	Crusader	34.5	1000	17.0	17.5	" ..	67506
Prospector	Prospector	34.2	1010	17.0	17.2	" ..	66507
Prince Edward's Pride..	Prince Edward's Pride.	32.5	1025	18.0	14.0	" ..	67508
Lynn Valley	Lynn Valley	33.0	1020	18.0	15.0	" ..	67509

J. A. RICKEY, INSPECTOR.

White Rose	White Rose	32.5	1010	19.0	13.5	Good..	70677
Old Homestead	Old Homestead...	32.7	1015	17.7	15.0	" ..	70678
Fleur de lis, extra fancy.	Fleur de lis.	33.0	1000	19.5	13.5	" ..	70679
Little Chief	Little Chief.	34.0	1020	17.5	16.5	" ..	70680
Frankford	Frankford	34.7	1010	18.5	16.2	" ..	70681
Tauru, Peeled (Italian product.)	Tauru	36.5	975	16.5	20.0	" ..	70682
Hygeian	Hygiea	35.0	1010	18.3	16.7	" ..	70683
Britannia	Britannia	32.7	1000	22.2	19.5	" ..	70690
Lyn Valley	Lynn Valley	32.5	1010	18.3	14.2	" ..	70691
Thistle	Thistle	33.5	1020	18.8	14.7	" ..	70692

J. A. RICKEY & J. H. BARON, ACTING INSPETOR.

Harvest Brand	Harvest	33.5	1025	17.5	16.0	Go. d..	73001
Highlander Brand	Highlander	34.0	1025	16.5	17.5	" ..	73003
Queen	Queen	33.7	1030	18.2	15.5	" ..	73004
Cottage	Cottage	33.7	1025	18.5	15.2	" ..	73006
Burlington	Burlington	33.5	1020	18.5	15.0	" ..	73011
Lily Vale	Lily Vale	33.2	1020	19.7	13.5	" ..	73012
Anchor	Anchor	32.5	1000	20.0	12.5	" ..	73013

BULLETIN No. 357—

Date of Collection.	Nature of Sample.	No. of Sample.	Name and Address of Vendor.	Cents.		Name and Address of Manufacturer or Furnisher as given by the Vendor.	
				Quantity.	Cents.	Manufacturer.	Furnisher.

DISTRICT OF KINGSTON—

1916.							
Mar. 9	Canned Tomatoes.	73014	R. Oliphant & Sons, Belleville.	3 tins.	25	Bloomfield P. Co., Ltd., Bloomfield, Ont.	
" 10	" ..	73018	P. Cormal & Sons, Peterboro.	3 "	35	Alymer Can. Co.	
" 10	" ..	73020	J. N. Nerd, Peterboro. ..	3 "	40	A. A. Morlen & Sons, Wellington, Ont.	

DISTRICT OF TORONTO—

Mar. 1	Canned Tomatoes.	70195	Parsons Brown & Co., 149 Adelaide St., E., Toronto.	3 cans	28	Aylmer Can. Co., Aylmer, Ont.	
" 1	" ..	70196	Eby Blain Ltd., 21 Front St., E., Toronto.	3 "	30	Bell Fruit Farms, Ltd., Grimsby.	
" 1	" ..	70197	Perkins Ince Co., 43 Front St., E., Toronto.	3 "	25	Brit. Can., Ltd., Hamilton.	
" 1	" ..	70198	T. Kinnear & Co., 49 Front St., E., Toronto.	3 "	30	Dom. Canners, Ltd., Hamilton.	
" 1	" ..	70199	Jas. Lumbers Co., Ltd., 67 Front St., E., Toronto.	3 "	30	The Vine: id Can. Co., Ltd., Vineland.	
" 1	" ..	72601	Groceries Ltd., 9 Front St. E., Toronto.	3 "	25	Frankford C. & P. Co., Ltd., Frankford.	
" 1	" ..	72602	Armstrong & Paddford, 36 Yonge St., Toronto.	3 "	31	E. D. Smith, Winona	
" 1	" ..	72603	H. P. Eckardt & Co., Church & Esplanade Sts. Toronto.	3 "	30	The Northfont Can. Co., Northfont.	
" 1	" ..	72604	Canada Brokerage Co., Ltd., 5 th Front St., E., Toronto.	3 "	25	Boulby Bros., Waterford.	
" 1	" ..	72605	T. J. Medland, 130 King St., E., Toronto.	3 "	25	Glenco C. Co., Ltd., Glenco.	

DISTRICT OF HAMILTON—

Mar. 14	Canned Tomatoes.	72670	Lumsden Bros., 82 McNabb St. N., Hamilton.	3 cans.	30	Hyslop & Sons, Greensville, Ont.	
" 14	" ..	72671	" " " "	3 "	30	Standard Can. Co., Hamilton.	
" 14	" ..	72672	Balfour Smye & Co., 72 McNabb St. N., Hamilton.	3 "	29	Vendors	
" 14	" ..	72675	Geo. E. Bristol & Co., 73 McNabb St. N., Hamilton.	3 "	30	Brighton Can. Co., Brighton, Ont.	
" 14	" ..	72676	" " " "	3 "	30	Niagara Falls Can. Co., Niagara Falls, Ont.	
" 14	" ..	72677	" " " "	3 "	30	Gorman Eckert & Co. Ltd., London, Ont.	

CANNED TOMATOES.

Inspector's Report. (Is not an expression of opinion.)	Brand from Label.	Results of Analysis.					No. of Sample.	Remarks and Opinion of the Chief Analyst.
		Net Weight Ounces.	Capacity of Tin cc.	Water. Ounces.	Solids. Ounces.	Condition.		

Concluded.

Puritan Brand.	Puritan.	34.0	1020	16.0	18.0	Good. . .	72014
	Canada First.	33.5	1020	17.3	16.2	" . . .	72018
Canada First.							
Alexander Brand.	Alexander.	35.0	1020	18.0	17.0	" . . .	72020

H. J. DAGER, INSPECTOR.

Canada First Brand.	Canada First.	33.2	1040	17.6	15.6	Good. . .	70195
Swiss Bell.	Swiss Bell.	34.0	1025	18.0	16.0	" . . .	70196
Britannia Brand.	Britannia.	33.0	1020	20.5	12.5	" . . .	70197
Hygeian Brand.	Hygeian	35.2	1010	18.7	16.5	" . . .	70198
Vine Brand.	Viue.	34.5	1020	15.8	18.7	" . . .	70199
Crusader Brand.	Crusadee.	32.5	1000	17.0	15.5	" . . .	72601
E. D. S. Brand.	E, D. S.	35.7	1050	17.7	18.0	" . . .	72602
Monarch Brand.	Monarch	33.5	1010	17.5	16.0	" . . .	72603
Horse hoe.	Horse Shoe.	33.0	1010	18.5	14.5	" . . .	72604
Dove Brand.	Dove.	33.7	1080	20.5	13.2	" . . .	72605

H. J. DAGER, ACTING INSPECTOR.

D. A. H. Brand.	D. A. H.	33.5	1020	19.8	13.7	Good. . .	72670
Old Church "	Old Church.	34.7	1040	18.4	16.3	" . . .	72671
Tartan "	Tartan.	33.2	1040	18.2	15.0	" . . .	72672
Thistle "	Thistle.	29.0	875	18.5	10.5	" . . .	72675
Pride of Niagara Falls Brand.	Pride of Niagara Falls.	35.3	1030	18.3	17.0	" . . .	72676
Golden West Brand.	Golded West.	32.5	1020	16.5	16.0	" . . .	72677

BULLETIN No. 357—

Date of Collection.	Nature of Sample.	No. of Sample.	Name and Address of Vendor.	Cost.		Name and Address of Manufacturer or Furnisher as given by the Vendor.	
				Quantity.	Cents.	Manufacturer.	Furnisher.
DISTRICT OF HAMILTON—							
1916.							
Mar. 14	Canned Tomatoes.	72678	W. H. Gillard & Co., 25 Main St. W., Hamilton.	3 cans.	23	The Delhi, F. & V. Can. Co., Ltd., Delhi, Ont.
" 14	" ..	72679	James Turner & Co., Ltd. 21 Main St. E., Hamilton.	3 "	21	Vendors.....
" 14	" ..	72680	" " "	3 "	29	Red Feather Co., Hamilton.
" 14	" ..	72681	A. G. Bain & Co., 89 King St. E., Hamilton.	3 "	38	The Silver Lake Can. Co., St. Davids.
DISTRICT OF WINDSOR—							
Mar. 6	Canned Tomatoes.	64901	L. W. Inrie, Tillsonburg.	3 tins.	30	Barkley Bros., Tillsonburg.
" 6	" ..	64902	Mrs. E. Gibson, "	3 "	30	A. J. Coyle, King Lake.
" 6	" ..	64903	Chas. Williams, "	3 "	30	Port Burwell C. Co., Port Burwell.
" 6	" ..	64904	J. A. Trestian, "	3 "	30	Dom. Cannery, Ltd.
" 6	" ..	64905	W. Stocks, "	3 "	30	Bloomfield Can. Co., Bloomfield, Ont.
" 6	" ..	64906	T. H. Simpkins, "	3 "	30	Dom. Cannery, Delhi, Ont.
" 7	" ..	64909	R. M. Teall, "	3 "	25	C. O. Edison, Vienna, Ont.
" 7	" ..	64910	W. B. Hogarth, "	3 "	30	Ingersoll Can. Co., Ingersoll.
" 7	" ..	64913	Readman & Co., Aylmer, Ont.	3 "	30	Cau. Cannery, Ltd. Hamilton.
" 7	" ..	64914	C. A. Filby, "	3 "	30	Dom. Cannery, Ltd., Hamilton.
DISTRICT OF MANITOBA—							
Feb. 21	Canned Tomatoes.	72043	T. A. Newman, Portage la Prairie.	3 cans	40	E. C. Metcalf, Deseronto, Ont.
" 21	" ..	72044	McCaig & Campbell, Portage la Prairie.	3 "	40	Vineland Can. Co., Vineland, Ont.
" 22	" ..	72045	T. T. Bailey, Portage la Prairie	3 "	45	Bloomfield P. Co., Ont.
Mar. 3	" ..	72060	A. Pegoraro, 26 Osborne st., Winnipeg.	3 "	40	E. D. Smith Co., Winona, Ont.
Feb. 28	" ..	72094	Lamontagne & Mahar, St Boniface.	3 "	30	Consecon Co. Ltd., Consecon, Ont.
Mar. 1	" ..	72095	J. Paterson, 215 Kelvin st., Elmwood.	3 "	40	Grimby C. Co., Grimby, Ont.
" 2	" ..	72096	David Doodger, 171 Osborne st., Winnipeg.	3 "	45	J. W. Hyatts & Sons, Westlake, Ont.
" 2	" ..	72097	H. Yacht, 211 Osborne st., Winnipeg.	3 "	40	Vineland Can. Co., Vineland, Ont.
" 2	" ..	72098	A. Irish, P.O. St. Mary's Road.	3 "	45	Canned Food Co., Toronto.
" 2	" ..	72099	Noe Rodrigue, 361 St. Mary's Road.	3 "	40	Pelham Can. Co., Fenwick, Ont.

CANNED TOMATOES.

Inspector's Report. (Is not an expression of opinion.)	Brand from Label.	Results of Analysis.					No. of Sample.	Remarks and Opinion of the Chief Analyst.
		Net Weight Ounces.	Capacity of Tin cc.	Water Ounces.	Solids Ounces.	Condition.		
<i>Concluded.</i>								
Maple Leaf Brand.....	Maple Leaf..	32.5	1040	17.0	15.5	Good...	72678	
Triangle " ..	Triangle ..	33.2	1030	19.7	13.5	" ..	72679	
Red Feather " ..	Red Feather.....	33.7	1030	19.2	14.5	" ..	72680	
Old Mill " ..	Old Mill ..	32.0	1025	16.0	16.0	" ..	72681	

JOHN TALBOT, INSPECTOR.

Oxford Choice ..	Oxford Choice....	33.5	1030	17.2	16.3	Good...	64901	
King Lake..	King Lake.....	32.0	1020	17.0	15.2	" ..	64902	
Elgin ..	Elgin ..	34.0	1020	17.5	16.5	" ..	64903	
Canada First.	Canada First.....	33.5	1030	18.2	15.3	" ..	64904	
Quaker.	Quaker.....	33.2	1025	18.2	15.0	" ..	64905	
Maple Leaf.....	Maple Leaf ..	32.0	1010	19.3	12.7	" ..	64906	
.....	Edison's.....	34.5	1040	19.0	15.5	" ..	64909	
Dundee ..	Dundee.....	34.0	1000	17.5	16.5	" ..	64910	
Canada First.....	Canada First.....	33.5	1020	17.0	16.5	" ..	64913	
" ..	" ..	33.0	1020	17.3	15.7	" ..	64914	

J. B. COSGROVE, INSPECTOR.

.....	Old Oak.....	33.0	1010	17.8	15.2	Good..	72043	
.....	Vine.....	33.8	1000	15.3	18.5	" ..	72044	
.....	Quaker.....	33.7	990	16.3	17.4	" ..	72045	
.....	E.D.S.....	33.1	980	16.2	16.9	" ..	72060	
.....	Mountain Crest...	19.0	500	8.5	10.5	" ..	72094	
.....	Swiss Bell... ..	33.5	990	18.2	15.3	" ..	72095	
.....	Sunset.....	34.0	990	14.2	19.8	" ..	72096	
.....	Vine.....	34.8	1010	12.7	22.1	" ..	72097	
.....	Canned Foods ...	32.6	1000	15.3	17.3	" ..	72098	
.....	Pelham.....	32.0	990	14.4	17.6	" ..	72099	

BULLETIN No. 357—

Date of Collection.	Nature of Sample.	No. of Sample.	Name and Address of Vendor.	Cost.		Name and Address of Manufacturer or Furnisher as given by the Vendor.	
				Quantity.	Cents.	Manufacturer.	Furnisher.

DISTRICT OF SASKATCHEWAN—

1916.							
Mar. 7	Canned Tomatoes.	71557	Jarrett & Reddick, Saskatoon.	3 cans	40	Brit. Can. C. Ltd., Hamilton, Ont.	MacDonald Crawford Co., Saskatoon.
" 7	" ..	71558	Woodsides, Ltd., Saskatoon.	3 "	45	A. McDonald Co., Saskatoon.
" 7	" ..	71559	White Groceries, Ltd., Saskatoon.	3 "	40	Brit. Can. C. Ltd., Hamilton, Ont.	MacDonald Crawford Co., Saskatoon.
" 8	" ..	71561	A. Holmes & Co., Prince Albert.	3 "	45	Miller & Co., Trenton, Ont.	Cameron & Heap, Prince Albert.
" 9	" ..	71562	Prince Albert Trading Co., Prince Albert.	3 "	45	Delhi F. & V. C. Co., Delhi, Ont.	A. McDonald Co., Saskatoon.
" 9	" ..	71563	A. McDonald Co., Saskatoon.	3 "	40	Brit. Can. C. Ltd., Hamilton, Ont.	Mfrs.....
" 10	" ..	71566	R. H. Williams & Sons, Regina.	3 "	45	Fretz Ltd., Hamilton, Ont.	"
" 14	" ..	71568	T. A. Craig Co., Moose Jaw.	3 "	40	No Vary Products Co., Toronto.	Moose Grocery, Moose-Jaw.
" 14	" ..	71569	Wetheral & Co., Moose Jaw.	3 "	40	Essex C. & P. Co., Ltd.	Codville Co., Moose-Jaw.
" 14	" ..	71570	H. E. New, Moose-Jaw..	3 "	45	Western Canneries Ltd., Kelowna, B.C.	MacDonald Crawford Co., Moose-Jaw.

DISTRICT OF ALBERTA—

Mar. 21	Canned Tomatoes.	52401	Wollard's Grocery, 1st St. W., Calgary.	3 tins.	45	Western Cannery Ltd., Kelowna, B.C.
" 21	" ..	52402	" " ..	3 "	55	Dom. Cannery Ltd., Hamilton.
" 21	" ..	52403	J. W. Pinder, 14 Ave. E., Calgary.	3 "	45	Western Cannery Ltd., Kelowna, B.C.
" 21	" ..	52404	L. Draper, 17 Ave. W.	3 "	45	Brit. Can. C. Ltd., Hamilton.
" 21	" ..	52405	J. H. Nettleton, 17 Ave. W., Calgary.	3 "	45	Western Cannery Ltd., Kelowna, B.C.
" 21	" ..	52406	Jenkins & Gahn, 11th St. W., Calgary.	3 "	45	Vernon Can. & Jam Co., Vernon.
" 21	" ..	52407	White & Walker, 11th St. W., Calgary.	3 "	45	Delhi F. & V. C. Co., Delhi, Ont.
" 23	" ..	52408	Sam Weaver, East Calgary.	3 "	45	" "
" 23	" ..	52409	Jenkins & Co., East Calgary.	3 "	45	No Vary Products Co., Toronto.
" 23	" ..	52410	" " ..	3 "	45	Fretz Ltd., Hamilton

CANNED TOMATOES.

Inspector's Report. (Is not an expression of opinion):	Brand from Label.	Results of Analysis.					No. of Sample.	Remarks, and Opinion of the Chief Analyst.
		Net Weight. Ounces.	Capacity of Tin cc.	Water. Ounces.	Solids. Ounces.	Condition.		

L. H. HALL, TEMPORARY INSPECTOR.

.....	Fleur de lis.....	33.4	1000	19.7	13.7	Good...	71557
Dundee Brand.....	Donalco.....	33.0	1000	18.3	14.7	" ...	71558
Colonist "	Colonist.....	32.6	1000	18.4	14.2	" ...	71559
Log Cabin Brand.....	Log Cabin.....	32.6	1015	16.9	15.1	" ...	71561
Maple Leaf "	Maple Leaf.	32.2	1010	19.9	12.3	" ...	71562
Britannia "	Britannia	33.3	1015	22.1	11.2	" ..	71563
.....	Fretz.....	35.0	1010	16.9	13.1	" ...	71566
No Vary Brand	No Vary.....	34.7	1000	17.2	17.5	" ...	71568
Essex "	Essex	32.0	1000	17.8	14.2	" ...	71569
Orchard City Brand....	Orchard City.....	34.8	1010	17.5	17.3	" ...	71570

A. R. W. MARKLEY, INSPECTOR.

Gold Medal Brand ...	Gold Medal.....	27.9	850	14.6	13.3	Good ..	52401
Hygien Brand.....	Hygeian	35.3	1010	18.8	16.5	" ...	52402
Orchard City Brand.....	Orchard City.....	30.4	860	17.0	12.6	" ...	52403
British Canadian Brand. Extra Fancy.	British Canadian..	33.4	990	18.8	14.6	" ...	52404
Standard of Empire Brand.	Standard of Empire	28.1	860	15.4	12.7	" ...	52405
Sunshine Brand	Sunshine	29.9	866	16.6	13.3	" ...	52406
Maple Leaf Brand.....	Maple Leaf.....	27.6	850	15.1	12.5	" ..	52407
.....	27.6	850	15.1	12.5	" ...	52408
No Vary Brand.....	35.1	1000	17.2	17.9	" ...	52409
Harvest Brand	Harvest.....	34.9	1000	18.6	16.3	" ...	52410

Date of Collection.	Nature of Sample.	No. of Sample.	Name and Address of Vendor.	Cost.		Name and Address of Manufacturer of Furnisher as given by the Vendor.	
				Quantity.	Cents.	Manufacturer.	Furnisher.

DISTRICT OF ROCKY MOUNTAINS—

1916.							
Mar.	6	Canned Tomatoes.	68192	A. T. Horswell & Co., Nelson.	3 tins.	40	Dom. Cannery Ltd., Vernon.
"	6	"	68193	" " "	3 "	60	W. H. Malkin Co., Vancouver.
"	6	"	68194	J. A. Irving & Co., Nelson.	3 "	45	Western Cannery Ltd., Kelowna, B.C.
"	6	"	68195	Star Grocery, Nelson.	3 "	45	Can. Cannery Ltd., Hamilton.
"	9	"	68196	P. Sacco, Cranbrook.	3 "	45	Ontario Pure Food Co.
"	9	"	68197	Cranbrook Trading Co., Cranbrook.	3 "	45	Western Cannery Ltd., Kelowna, B.C.
"	9	"	68198	" " "	3 "	45	Robt. Broder, New Westminster.
"	10	"	68202	Crow's Nest Trading Co., Fernie.	3 "	45	A. A. Morden & Sons, Wellington, Ont.
"	10	"	68203	Trites Wood Co., Fernie.	3 "	45	Northport C. Co., Northport, Ont.
"	10	"	68204	" " "	3 "	45	Aylmer Can. Co., Aylmer, Ont.

DISTRICT OF VANCOUVER—

April	10	Canned Tomatoes.	55521	A. & C. Grocery, 520 Granville st., Vancouver	3 tins.	30	Brit. Can. C., Ltd., Hamilton.
"	10	"	55522	" " "	3 "	40	Dom. Cannery Ltd., Vernon.
"	10	"	55523	Frank Wright, 645 Seymour st., Vancouver.	3 "	45	Niagara Falls C. Co., Niagara Falls, Ont.
"	11	"	55524	F. W. Walford, 950 Granville st., Vancouver.	3 "	40	Robt. Broder, New Westminster.
"	11	"	55525	" " "	3 "	40	" " "
"	11	"	55526	A. Murphy & Co., 1102 Granville st., Vancouver	3 "	55	W. H. Malkin Co., Ltd., Vancouver.
"	11	"	55527	W. H. Walsh, Seymour and Davie sts., Vancouver	3 "	35	Dom. Cannery Ltd., Hamilton.
"	11	"	55528	" " "	3 "	35	Western Cannery Ltd., Kelowna.
"	12	"	55529	David Spencer, Ltd., Vancouver.	3 "	38	Fretz, Ltd., Hamilton, Ont.
"	12	"	55530	W. H. Edgett, 118 Hastings st., W., Vancouver	3 "	40	Ont. Cannery Ltd., Sarnia.

CANNED TOMATOES.

Inspector's Report. (Is not an expression of opinion.)	Brand from Label.	Results of Analysis.					No. of Sample.	Remarks and Opinion of the Chief Analyst.
		Net Weight Ounces.	Capacity of Tin cc.	Water Ounces.	Solids Ounces.	Condition.		

THOS. PARKER, INSPECTOR.

		p.c.		p.c.	p.c.		
Quaker Brand	Quaker	30.26	875	19.40	10.85	Good . . .	68192
Malkin's Best Brand ..	Malkin's Best	30.11	875	18.70	11.41	" . . .	68193
Standard of Empire Brand.	Standard of Empire	33.88	985	19.64	14.24	" . . .	68194
Red Feather Brand	Red Feather	28.90	860	14.57	14.23	" . . .	68196
Pure Food Brand	Pure Food	28.91	860	18.34	10.57	" . . .	68196
Gold Medal Brand	Gold Medal	30.30	875	20.06	10.21	" . . .	68197
Royal City Brand	Royal City	28.91	850	14.45	14.46	" . . .	68198
Alexandra Brand	Alexandra	32.69	1000	21.00	11.63	" . . .	68202
Prospectors Brand	Prospector's	34.13	985	19.40	14.73	" . . .	68203
Canada First Brand ..	Canada First	33.57	1000	17.98	15.50	" . . .	68204

E. J. MORGAN, INSPECTOR.

British Canadian Brand	British Canadian.	19.67	615	9.69	9.96	Good . . .	55521
Quaker Brand	Quaker	30.33	860	12.50	17.74	" . . .	55522
Pride of Niagara Falls Brand.	Pride of Niagara Falls.	30.02	860	12.24	17.78	" . . .	55523
North Star Brand	North Star	29.16	860	14.88	14.28	" . . .	55524
Royal City Brand	Royal City	28.06	875	13.58	14.45	" . . .	55525
Malkin's Best Brand	Malkin's Best	30.96	860	18.97	11.98	" . . .	55526
Thistle Brand	Thistle	28.13	867	16.75	11.38	" . . .	55527
Orchard City Brand	Orchard City	34.31	997	20.31	14.00	" . . .	55528
.	Fretz	29.27	847	14.81	14.46	" . . .	55529
Prairie Brand	Prairie	33.01	898	19.75	13.28	" . . .	55530

Date of Collection.	Nature of Sample.	No. of Sample.	Name and Address of Vendor.	Cost.		Name and Address of Manufacturer or Furnisher as given by the Vendor.	
				Quantity.	Cents.	Manufacturer.	Furnisher.

DISTRICT OF VICTORIA—

1916.							
Feb. 21	Canned Tomatoes.	66651	Windsor Grocery Co., 817 Govt. st., Victoria.	3 tins.	40	Dom. Cannery, Ltd., Vernon.
" 22	" ..	66659	Dixie H. Ross & Co., 1317 Govt. st., Victoria.	3 "	15	Western Cannery, Ltd., Kelowna.
" 22	" ..	66668	The West End Grocery Co., 1002 Govt. st., Victoria.	3 "	30	Bloomfield, P. Co., Bloomfield, Ont.
" 24	" ..	66672	H. O. Kirkham & Co., 1199 Govt. st., Victoria.	3 "	38	Western Cannery, Ltd., Kelowna.
" 24	" ..	66673	" " "	3 "	30	Robt. Bruder, New Westminster.
" 24	" ..	66684	Acton Bros., 1317 Douglas st., Victoria.	3 "	40	Aylmer Can. Co., Aylmer, Ont.
" 25	" ..	66691	Henry W. Driver, 856 Yates st., Victoria.	3 "	30	Bloomfield P. Co., Bloomfield, Ont.
" 28	" ..	71306	L. D. Rines, Menzies and Sincoe sta., Victoria.	3 "	45	Cal. Fruit Cannery Assn., San Francisco.
Mar. 13	" ..	71330	Western Grocery Co., 765 Fort st., Montreal.	3 "	30	Aylmer C. Co., Aylmer, Ont.

CANNED TOMATOES.

Inspector's Report. (Is not an expression of opinion.)	Brand from Label.	Results of Analysis.					No. of Samples.	Remarks and Opinion of the Chief Analyst.
		Net Weight Ounces.	Capacity of Tin cc.	Water. Ounces.	Solids. Ounces.	Condition.		

D. O'SULLIVAN, INSPECTOR.

Quaker Brand.....	Quaker.....	30.40	860	19.85	10.55	Good...	66651
.....	Standard of Em- pire.	30.30	860	18.23	12.07	" ...	66659
Quaker Brand.....	Quaker.....	19.74	615	12.66	7.06	" ...	66660
Orchard City Brand....	Orchard City....	29.23	857	15.41	13.82	" ...	66672
Royal City Brand.	Royal City.	19.43	590	11.46	7.97	" ...	66673
Canada First Brand....	Canada First	28.70	850	18.34	10.36	" ...	66684
Quaker Brand.....	Quaker..	19.74	615	11.81	7.93	" ...	66691
Delmonte Brand.....	Del Monte.,	29.51	831	12.87	16.64	" ...	71305
Canada First Brand....	Canada First.....	20.75	609	12.52	8.24	" ...	71330

