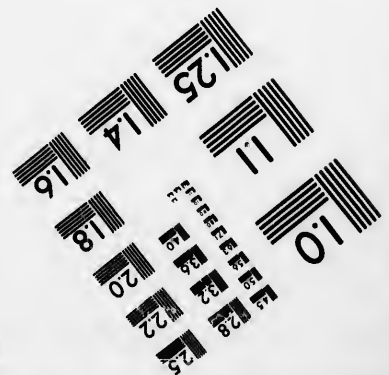
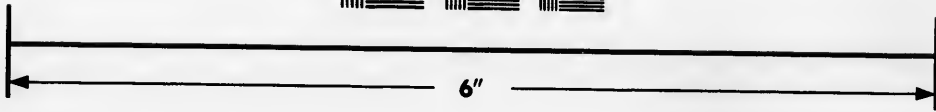
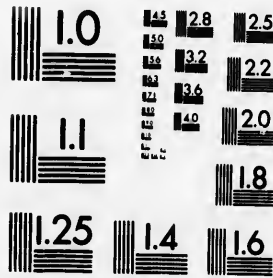


**IMAGE EVALUATION  
TEST TARGET (MT-3)**



**Photographic  
Sciences  
Corporation**

23 WEST MAIN STREET  
WEBSTER, N.Y. 14580  
(716) 872-4503

18  
20  
22  
25  
28  
32  
36  
40

**CIHM  
Microfiche  
Series  
(Monographs)**

**ICMH  
Collection de  
microfiches  
(monographies)**



Canadian Institute for Historical Microreproductions / Institut canadien de microreproductions historiques

10  
11

**© 1993**

Technical and Bibliographic Notes / Notes techniques et bibliographiques

The Institute has attempted to obtain the best original copy available for filming. Features of this copy which may be bibliographically unique, which may alter any of the images in the reproduction, or which may significantly change the usual method of filming, are checked below.

L'Institut a microfilmé le meilleur exemplaire qu'il lui a été possible de se procurer. Les détails de cet exemplaire qui sont peut-être uniques du point de vue bibliographique, qui peuvent modifier une image reproduite, ou qui peuvent exiger une modification dans la méthode normale de filmage sont indiqués ci-dessous.

- Coloured covers/  
Couverture de couleur
- Covers damaged/  
Couverture endommagée
- Covers restored and/or laminated/  
Couverture restaurée et/ou pelliculée
- Cover title missing/  
Le titre de couverture manque
- Coloured maps/  
Cartes géographiques en couleur
- Coloured ink (i.e. other than blue or black)/  
Encre de couleur (i.e. autre que bleue ou noire)
- Coloured plates and/or illustrations/  
Planches et/ou illustrations en couleur
- Bound with other material/  
Relié avec d'autres documents
- Tight binding may cause shadows or distortion  
along interior margin/  
La reliure serrée peut causer de l'ombre ou de la  
distorsion le long de la marge intérieure
- Blank leaves added during restoration may appear  
within the text. Whenever possible, these have  
been omitted from filming/  
Il se peut que certaines pages blanches ajoutées  
lors d'une restauration apparaissent dans le texte,  
mais, lorsque cela était possible, ces pages n'ont  
pas été filmées.

- Coloured pages/  
Pages de couleur
  - Pages damaged/  
Pages endommagées
  - Pages restored and/or laminated/  
Pages restaurées et/ou pelliculées
  - Pages discoloured, stained or foxed/  
Pages décolorées, tachetées ou piquées
  - Pages detached/  
Pages détachées
  - Showthrough/  
Transparence
  - Quality of print varies/  
Qualité inégale de l'impression
  - Continuous pagination/  
Pagination continue
  - Includes index(es)/  
Comprend un (des) index
- Title on header taken from: /  
Le titre de l'en-tête provient:
- Title page of issue/  
Page de titre de la livraison
  - Caption of issue/  
Titre de départ de la livraison
  - Masthead/  
Générique (périodiques) de la livraison

- Additional comments: /  
Commentaires supplémentaires:

This item is filmed at the reduction ratio checked below/  
Ce document est filmé au taux de réduction indiqué ci-dessous

10X	14X	18X	22X	26X	30X
<input type="checkbox"/>	<input type="checkbox"/>	<input checked="" type="checkbox"/>	<input type="checkbox"/>	<input type="checkbox"/>	<input type="checkbox"/>
12X	16X	20X	24X	28X	32X

The copy filmed here has been reproduced thanks to the generosity of:

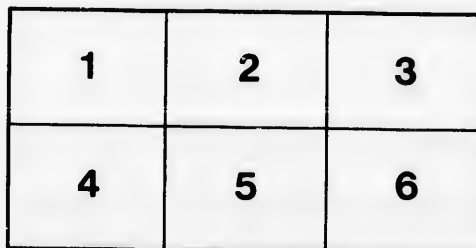
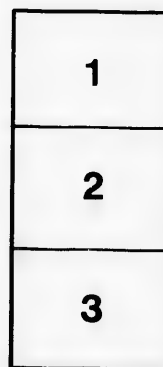
National Library of Canada

The images appearing here are the best quality possible considering the condition and legibility of the original copy and in keeping with the filming contract specifications.

Original copies in printed paper covers are filmed beginning with the front cover and ending on the last page with a printed or illustrated impression, or the back cover when appropriate. All other original copies are filmed beginning on the first page with a printed or illustrated impression, and ending on the last page with a printed or illustrated impression.

The last recorded frame on each microfiche shall contain the symbol  $\rightarrow$  (meaning "CONTINUED"), or the symbol  $\nabla$  (meaning "END"), whichever applies.

Maps, plates, charts, etc., may be filmed at different reduction ratios. Those too large to be entirely included in one exposure are filmed beginning in the upper left hand corner, left to right and top to bottom, as many frames as required. The following diagrams illustrate the method:



L'exemplaire filmé fut reproduit grâce à la générosité de:

Bibliothèque nationale du Canada

Les images suivantes ont été reproduites avec le plus grand soin, compte tenu de la condition et de la netteté de l'exemplaire filmé, et en conformité avec les conditions du contrat de filmage.

Les exemplaires originaux dont la couverture en papier est imprimée sont filmés en commençant par le premier plat et en terminant soit par la dernière page qui comporte une empreinte d'impression ou d'illustration, soit par le second plat, selon le cas. Tous les autres exemplaires originaux sont filmés en commençant par la première page qui comporte une empreinte d'impression ou d'illustration et en terminant par la dernière page qui comporte une telle empreinte.

Un des symboles suivants apparaîtra sur la dernière image de chaque microfiche, selon le cas: le symbole  $\rightarrow$  signifie "A SUIVRE", le symbole  $\nabla$  signifie "FIN".

Les cartes, planches, tableaux, etc., peuvent être filmés à des taux de réduction différents. Lorsque le document est trop grand pour être reproduit en un seul cliché, il est filmé à partir de l'angle supérieur gauche, de gauche à droite, et de haut en bas, en prenant le nombre d'images nécessaire. Les diagrammes suivants illustrent la méthode.

BY-LAWS

OF THE

American Folk Lore Society,

MONTREAL BRANCH.



Incorporated under the provisions of Sec. 5487 Revised Statutes of Prov. of Quebec.

GR1

A54

1892

XXXX

The science of Folk-lore is the comparison and identification of the survivals of archaic beliefs, customs, and traditions in modern ages.

Under this general term are included Folk-tales ; Hero-tales ; Traditional Ballads and Songs ; Palace Legends and Traditions ; Goblin-dom ; Witchcraft ; Leechcraft ; Superstitions connected with material things ; Local Customs ; Festival Customs ; Ceremonial Customs ; Games ; Jingles ; Nursery Rhymes ; Riddles, etc. ; Proverbs ; Old Saws, rhymed and unrhymed ; Nick-names ; Place-rhymes and Sayings ; Folk-etymology.

*—Definition of the Folk-lore Society of England.*

0 911434

National Library  
of Canada

Bibliothèque nationale  
du Canada

TLL  
922A

- BY-LAWS. -

---

**NAME.**

I. This club shall be called the "AMERICAN FOLK LORE SOCIETY, MONTREAL BRANCH."

**OFFICERS.**

II. The officers shall be a President, 1st and 2nd Vice-Presidents, Secretary and Treasurer, who with the Ladies' Committee, which shall consist of six members, shall constitute the Executive Board. The officers shall be elected by a majority

c 1900?

vote and hold office for one year. Vacancies occurring during the year may be filled for the unexpired term by the Executive Board.

### DUTIES.

III. The President, or in his absence one of the Vice-Presidents, shall preside at all meetings of the Society and Executive Board. The Secretary shall keep the minutes of all meetings, and have general charge of the correspondence and records of the Society; he shall furnish to the Secretary of the General Society a monthly report of the proceedings of this Branch and endeavor to promote intercourse between the branches. He shall also perform the duties of Auditor. The



Treasurer shall collect all dues and make all necessary disbursements authorized by the Executive Board, and shall at each Annual Meeting present a duly audited statement and report. The Ladies' Committee shall arrange the time and place of meetings of the Society, and shall also report upon all proposals for membership before the same are submitted for election. The Executive Board in addition to their ordinary duties shall arrange the programme for each meeting.

#### MEMBERSHIP.

IV. Candidates for membership shall be proposed and seconded in writing by members of the Society. The proposal shall be submitted to the Ladies' Committee, and if approved

by this Committee, the name shall be reported to the Executive Board. Candidates thus reported shall be balloted for at the next meeting of the Board, one adverse ballot excluding.

### DUES.

V. The first member elected from each household shall pay three dollars and fifty cents per annum, and shall then be entitled to membership in the General Society, to the Journal of that Society, and to membership in this Branch. Other members from the same household shall pay a fee of one dollar, which shall entitle them to membership in this Branch only.

All fees shall be payable in advance, and shall fall due on the first day of January in each year.

## MEETINGS.

VI. The Annual Meeting for the election of officers, presentation of reports, and other business, shall be held on the second Monday in January, in each year. The Society shall meet for business on the second Monday of each month, excepting July, August and September. Members shall have the privilege of introducing friends at the meetings.

## AMENDMENTS.

VII. No amendment, appeal or alterations of these By-Laws shall be valid unless made by the Executive Board and confirmed at the next General meeting, by a vote of two-thirds of the members present and voting.

