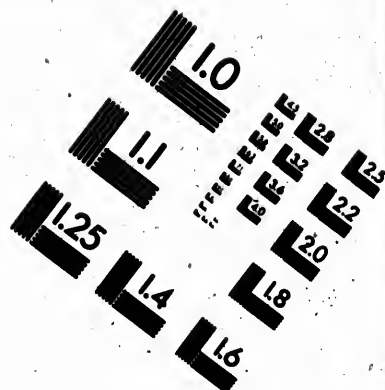
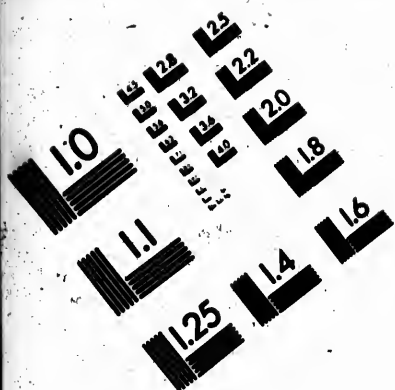




AIM

Association for Information and Image Management

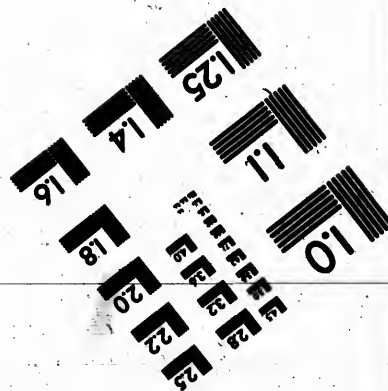
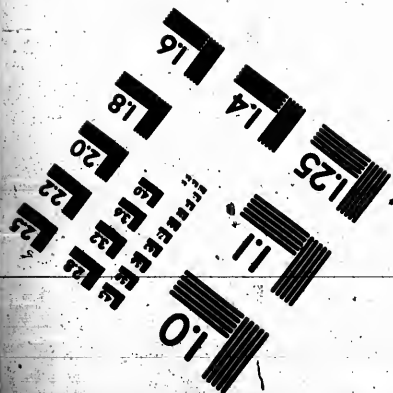
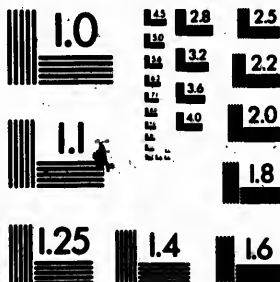
1100 Wayne Avenue, Suite 1100  
Silver Spring, Maryland 20910  
301/587-8202



Centimeter



Inches



MANUFACTURED TO AIM STANDARDS  
BY APPLIED IMAGE, INC.

EE 25  
EE 22  
EE 20  
18

**CIHM  
Microfiche  
Series  
(Monographs)**

**ICMH  
Collection de  
microfiches  
(monographies)**



**Canadian Institute for Historical Microreproductions / Institut canadien de microreproductions historiques**

10  
11

**© 1994**

Technical and Bibliographic Notes / Notes techniques et bibliographiques

The Institute has attempted to obtain the best original copy available for filming. Features of this copy which may be bibliographically unique, which may alter any of the images in the reproduction, or which may significantly change the usual method of filming, are checked below.

L'Institut a microfilmé le meilleur exemplaire qu'il lui a été possible de se procurer. Les détails de cet exemplaire qui sont peut-être uniques du point de vue bibliographique, qui peuvent modifier une image reproduite, ou qui peuvent exiger une modification dans la méthode normale de filmage sont indiqués ci-dessous.

- Coloured covers/  
Couverture de couleur
- Covers damaged/  
Couverture endommagée
- Covers restored and/or laminated/  
Couverture restaurée et/ou pelliculée
- Cover title missing/  
Le titre de couverture manque
- Coloured maps/  
Cartes géographiques en couleur
- Coloured ink (i.e. other than blue or black)/  
Encre de couleur (i.e. autre que bleue ou noire)
- Coloured plates and/or illustrations/  
Planches et/ou illustrations en couleur
- Bound with other material/  
Relié avec d'autres documents
- Tight binding may cause shadows or distortion  
along interior margin/  
La reliure serrée peut causer de l'ombre ou de la  
distorsion le long de la marge intérieure
- Blank leaves added during restoration may appear  
within the text. Whenever possible, these have  
been omitted from filming/  
Il se peut que certaines pages blanches ajoutées  
lors d'une restauration apparaissent dans le texte,  
mais, lorsque cela était possible, ces pages n'ont  
pas été filmées.
- Additional comments: /  
Commentaires supplémentaires:

- Coloured pages/  
Pages de couleur
- Pages damaged/  
Pages endommagées
- Pages restored and/or laminated/  
Pages restaurées et/ou pelliculées
- Pages discoloured, stained or foxed/  
Pages décolorées, tachetées ou piquées
- Pages detached/  
Pages détachées
- Showthrough/  
Transparence
- Quality of print varies/  
Qualité inégale de l'impression
- Continuous pagination/  
Pagination continue
- Includes index(es)/  
Comprend un (des) index
- Title on header taken from: /  
Le titre de l'en-tête provient:
- Title page of issue/  
Page de titre de la livraison
- Caption of issue/  
Titre de départ de la livraison
- Masthead/  
Générique (périodiques) de la livraison

This item is filmed at the reduction ratio checked below/  
Ce document est filmé au taux de réduction indiqué ci-dessous.

10X	14X	18X	22X	26X	30X
<input type="checkbox"/>	<input checked="" type="checkbox"/>	<input type="checkbox"/>	<input type="checkbox"/>	<input type="checkbox"/>	<input type="checkbox"/>
12X	16X	20X	24X	28X	32X

The copy filmed here has been reproduced thanks to the generosity of:

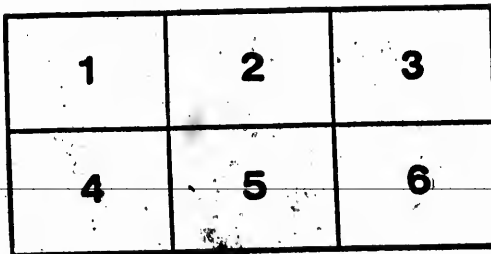
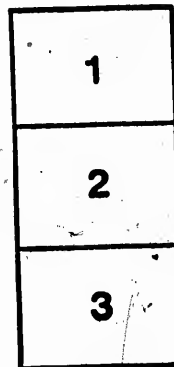
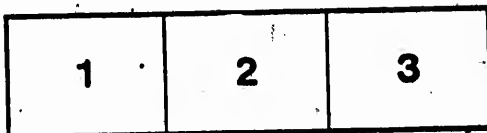
The United Church of Canada Archives  
Victoria University Archives

The images appearing here are the best quality possible considering the condition and legibility of the original copy and in keeping with the filming contract specifications.

Original copies in printed paper covers are filmed beginning with the front cover and ending on the last page with a printed or illustrated impression, or the back cover when appropriate. All other original copies are filmed beginning on the first page with a printed or illustrated impression, and ending on the last page with a printed or illustrated impression.

The last recorded frame on each microfiche shall contain the symbol  $\rightarrow$  (meaning "CONTINUED"), or the symbol  $\nabla$  (meaning "END"), whichever applies.

Maps, plates, charts, etc., may be filmed at different reduction ratios. Those too large to be entirely included in one exposure are filmed beginning in the upper left hand corner, left to right and top to bottom, as many frames as required. The following diagrams illustrate the method:



L'exemplaire filmé fut reproduit grâce à la générosité de:

The United Church of Canada Archives  
Victoria University Archives

Les images suivantes ont été reproduites avec le plus grand soin, compte tenu de la condition et de la netteté de l'exemplaire filmé, et en conformité avec les conditions du contrat de filmage.

Les exemplaires originaux dont la couverture en papier est imprimée sont filmés en commençant par le premier plat et en terminant soit par la dernière page qui comporte une empreinte d'impression ou d'illustration, soit par le second plat, selon le cas. Tous les autres exemplaires originaux sont filmés en commençant par la première page qui comporte une empreinte d'impression ou d'illustration et en terminant par la dernière page qui comporte une telle empreinte.

Un des symboles suivants apparaîtra sur la dernière image de chaque microfiche, selon le cas: le symbole  $\rightarrow$  signifie "A SUIVRE", le symbole  $\nabla$  signifie "FIN".

Les cartes, planches, tableaux, etc., peuvent être filmés à des taux de réduction différents. Lorsque le document est trop grand pour être reproduit en un seul cliché, il est filmé à partir de l'angle supérieur gauche, de gauche à droite, et de haut en bas, en prenant le nombre d'images nécessaire. Les diagrammes suivants illustrent la méthode.

GSF  
40

UNITED CHURCH  
ARCHIVES  
GENERAL  
ARCHIVES

# COURSE OF STUDY

FOR

PROBATIONERS IN THE MINISTRY

Pam  
BX  
8251  
A278CL

OF THE

Canadian Wesleyan Methodist

# NEW CONNEXION CHURCH,

---

ADOPTED BY THE CONFERENCE HELD IN  
TORONTO, JUNE, 1858.

---

LONDON, C. W.:

PRINTED AT THE CONFERENCE OFFICE, DUNDAS STREET EAST  
1858.

Handwritten text, possibly a date or reference number, located in the top left corner of the page.

P  
co  
le  
an  
is  
tu  
fo  
so

# COURSE OF STUDY, &c.

---

## FIRST YEAR.

---

ON THE ADMISSION OF YOUNG MEN ON PROBATION.

It is indispensably required that the party proposed shall:—

I. Read the Scriptures and our Hymns *correctly*.

II. Write a plain hand, and compose a letter or essay *correctly*.

III. An acquaintance with Geography, and at least the primary rules of Arithmetic is essential.

IV. Such a knowledge of the Holy Scriptures as will enable him to comprehend the following subjects, so as to answer enquiries acceptably:

a. Chronology, or relative dates of great events.

b. History—events and their order.

c. Biography, or character and leading acts of the men and women of the Bible.

d. Doctrine—a satisfactory acquaintance with the leading doctrines of the Bible, in reply to the following questions, viz.:—

1. What is Evangelical repentance?

2. What is Justification?

3. What is Justifying Faith?

4. What is the *direct* witness of the Spirit?

5. What is the *indirect* witness of the Spirit?

6. What is Christian perfection?

7. What is the difference between justification and sanctification?

N. B.—Let these points be proved *in order* by appropriate passages from Holy Writ.

V. A satisfactory acquaintance with our Discipline.

— TEXT BOOKS:

Any approved Geography and Arithmetic; Todd's Students' Manual; Reid's Elements of Composition; Cooke's Theology; Wesley's Sermons.



UNITED CHURCH  
ARCHIVES

**SECOND YEAR.**

---

I. Re-examination in Reading, Composition, Grammar, Geography and Arithmetic.

II. A satisfactory knowledge of the Chronology, History and Biography of Holy Scripture.

III. The Evidences of Christianity; and such an acquaintance with a system of approved Theology as to comprehend and clearly state the general plan or outline of the author.

IV. A correct knowledge of the Origin and History of Methodism, and particularly of the origin, history and distinguishing principles of the Methodist New Connexion.

V. He shall also be required to submit his plan for pulpit preparation, general study, and pastoral oversight.

**TEXT BOOKS:**

Any approved Grammar; Paley's Evidences; Cooke's Theology; Wesley's Jour-

AMERICAN  
METHODIST CHURCH

nals; Whitehead's Life of Wesley; Jubilee Volume; Life of Kilham; Watson's Theological Institutes.

---

**THIRD YEAR.**

---

I. Re-examination on subjects named in first article of the second year's course.

II. A knowledge of the Chronology, History and Biography of the great nations of the earth, in relation to that of the Holy Scriptures.

III. The Elements of Natural Philosophy.

IV. The Evidences of Christianity, and the Inspiration and Authenticity of the Scriptures.

V. A satisfactory acquaintance with the History of the Reformation, and its effects on civilization, liberty and religion.

VI. The outlines of Ecclesiastical History in general.

VII. Plan of studies and Circuit duties.

## TEXT BOOKS:

Taylor's Manual of Ancient and Modern History; Comstock's Natural Philosophy; Horne's Introduction; Butler's Analogy, (with Teft's Analysis;) D'Aubigne's Reformation; Mosheim's Ecclesiastical History, (Murdock's Translation, English edition, with notes by Dr. Reed.

---

 FOURTH YEAR.
 

---

- I. Re-examination in the studies of previous years.
- II. Philosophy, mental and moral.
- III. Logic and Rhetoric.
- IV. Ancient and Modern History.
- V. An essay or written sermon.
- VI. Plan of study, &c. (See Article 5th, second year's course.)

## VII. Examination on the distinctive doctrines of Methodism.

The candidate will prepare himself to *define* accurately, to *explain* and *prove*, the *distinctive* doctrines of Methodism, as well as the great and leading doctrines of the Scriptures generally; in particular the following, viz.:—

1. The being and character of God.
2. The Inspiration and sufficiency of the holy Scriptures.
3. The Deity of Christ.
4. Personality and Deity of the Holy Ghost.
5. Primitive state of man.
6. Original sin.
7. Atonement for all.
8. Conditions of salvation.
9. Justification.
10. Regeneration and its evidences.
11. The direct witness of the Spirit.
12. Entire sanctification.

13. Moral responsibility, and man's free agency.

14. Possibility of falling *finally* from grace.

15. Immortality of the soul, and the future state.

16. The resurrection of the body.

17. The general judgment.

18. Future and eternal rewards and punishments.

19. The institutions of Christianity—the ministry, the sabbath, the sacraments. (See Discipline, page 30, sec. 15.)

#### TEXT BOOKS:

Upham's Mental Philosophy; Wayland's Elements of Mental Philosophy; Wayland's Elements of Moral Philosophy; Whateley's Logic; Whateley's Rhetoric; Taylor's Manual of Ancient and Modern History; Cooke's Theiotes; Watson's Institutes.

The student will do well to obtain also, at his earliest convenience, Macaulay's History of England; Smith's Sacred Annals, Bishop Pearson's Exposition of the Creed; and Harper's Course of Study for Wesleyan Methodist Probationers.

---

## APPENDIX.

---

The Conference having adopted the previous outline as its course of study for candidates for the ministry, further resolves:

I. That all probationers ordained for *special* purposes shall be particularly examined respecting their understanding and approval of the polity of the Methodist New Connexion.

II. That the requisitions in the *Course of Study* do not supersede or set aside any of the requirements of our Discipline, *vide* sec. 8, p. 33.

III. That the examination of Probationers shall be conducted at each May District Meeting, *privately*, by a Board of Examiners appointed at the previous October District Meeting.

IV. That the following questions be proposed to the candidate, *publicly*, at each

May District Meeting, by the Chairman of the District—the answers to which shall be faithfully recorded in the District Book, viz.:

1. Have you *daily* and *prayerfully* read the word of God during the year?

2. Have you a time *specially* set apart for this sacred duty?

3. Have you a *definite rule* as to the order or amount of such daily readings?

4. Have you read the Bible regularly through *once*, or oftener, during the year?

5. What part of Mr. Wesley's doctrinal works have you studied this year?

6. What part of Mr. Fletcher's writings have you studied this year?

7. What other works, helpful to personal piety or ministerial usefulness, have you read?

8. Have you any rule by which you apportion your time for the attainment of personal holiness, for study, for pastoral duties?

9. Have you carefully visited the sick under your care during the year?



10. Have you had fruit of your ministry in the conversion of sinners?

11. Have you paid attention to the establishment of Sabbath schools; and have you catechized the children of those schools, and of our friends and hearers, as you have had opportunity?

11. Have you visited the people at their houses, enquiring into their religious state, praying with them, and administering to them wholesome counsel?

13. Have you carefully read over our Discipline during the year, and has it your approval and confidence?

[SIGNED,]

By order of the Conference,

W. McCLURE, *President.*

J. C. WATTS, *Secretary.*

Toronto, June 8th, 1858.



**UNITED CHURCH  
ARCHIVE**

NOV 10 1857  
MICHIGAN

Mr. E. Seymour  
Toronto

May 21<sup>st</sup>  
1857



