

**CIHM  
Microfiche  
Series  
(Monographs)**

**ICMH  
Collection de  
microfiches  
(monographies)**



**Canadian Institute for Historical Microreproductions / Institut canadien de microreproductions historiques**

**© 1997**

## Technical and Bibliographic Notes / Notes techniques et bibliographiques

The Institute has attempted to obtain the best original copy available for filming. Features of this copy which may be bibliographically unique, which may alter any of the images in the reproduction, or which may significantly change the usual method of filming are checked below.

- Coloured covers / Couverture de couleur
- Covers damaged / Couverture endommagée
- Covers restored and/or laminated / Couverture restaurée et/ou pelliculée
- Cover title missing / Le titre de couverture manque
- Coloured maps / Cartes géographiques en couleur
- Coloured ink (i.e. other than blue or black) / Encre de couleur (i.e. autre que bleue ou noire)
- Coloured plates and/or illustrations / Planches et/ou illustrations en couleur
- Bound with other material / Relié avec d'autres documents
- Only edition available / Seule édition disponible
- Tight binding may cause shadows or distortion along interior margin / La reliure serrée peut causer de l'ombre ou de la distorsion le long de la marge intérieure.
- Blank leaves added during restorations may appear within the text. Whenever possible, these have been omitted from filming / Il se peut que certaines pages blanches ajoutées lors d'une restauration apparaissent dans le texte, mais, lorsque cela était possible, ces pages n'ont pas été filmées.
- Additional comments / Commentaires supplémentaires:

L'Institut a microfilmé le meilleur exemplaire qu'il lui a été possible de se procurer. Les détails de cet exemplaire qui sont peut-être uniques du point de vue bibliographique, qui peuvent modifier une image reproduite, ou qui peuvent exiger une modification dans la méthode normale de filmage sont indiqués ci-dessous.

- Coloured pages / Pages de couleur
- Pages damaged / Pages endommagées
- Pages restored and/or laminated / Pages restaurées et/ou pelliculées
- Pages discoloured, stained or foxed / Pages décolorées, tachetées ou piquées
- Pages detached / Pages détachées
- Showthrough / Transparence
- Quality of print varies / Qualité inégale de l'impression
- Includes supplementary material / Comprend du matériel supplémentaire
- Pages wholly or partially obscured by errata slips, tissues, etc., have been refilmed to ensure the best possible image / Les pages totalement ou partiellement obscurcies par un feuillet d'errata, une pelure, etc., ont été filmées à nouveau de façon à obtenir la meilleure image possible.
- Opposing pages with varying colouration or discolourations are filmed twice to ensure the best possible image / Les pages s'opposant ayant des colorations variables ou des décolorations sont filmées deux fois afin d'obtenir la meilleure image possible.

This item is filmed at the reduction ratio checked below /  
Ce document est filmé au taux de réduction indiqué ci-dessous.

<b>10x</b>		<b>14x</b>		<b>18x</b>		<b>22x</b>		<b>26x</b>		<b>30x</b>	
								/			
<b>12x</b>		<b>16x</b>		<b>20x</b>		<b>24x</b>		<b>28x</b>		<b>32x</b>	

The copy filmed here has been reproduced thanks to the generosity of:

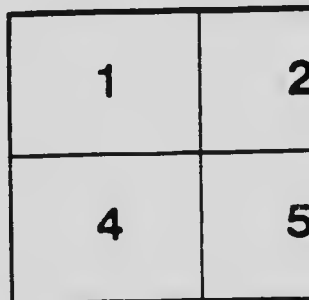
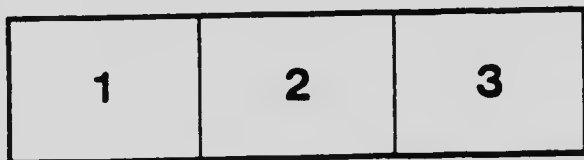
Stauffer Library  
Queen's University

The images appearing here are the best quality possible considering the condition and legibility of the original copy and in keeping with the filming contract specifications.

Original copies in printed paper covers are filmed beginning with the front cover and ending on the last page with a printed or illustrated impression, or the back cover when appropriate. All other original copies are filmed beginning on the first page with a printed or illustrated impression, and ending on the last page with a printed or illustrated impression.

The last recorded frame on each microfiche shall contain the symbol  $\rightarrow$  (meaning "CONTINUED"), or the symbol  $\nabla$  (meaning "END"), whichever applies.

Maps, plates, charts, etc., may be filmed at different reduction ratios. Those too large to be entirely included in one exposure are filmed beginning in the upper left hand corner, left to right and top to bottom, as many frames as required. The following diagrams illustrate the method:



L'exemplaire filmé fut reproduit grâce à la générosité de:

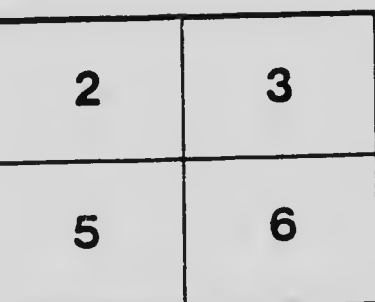
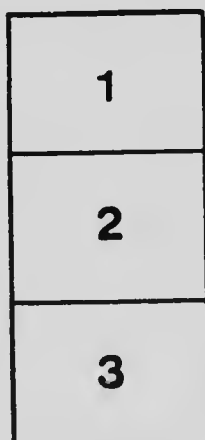
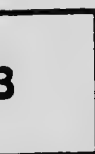
Stauffer Library  
Queen's University

Les images suivantes ont été reproduites avec le plus grand soin, compte tenu de la condition et de la netteté de l'exemplaire filmé, et en conformité avec les conditions du contrat de filmage.

Les exemplaires originaux dont la couverture en papier est imprimée sont filmés en commençant par le premier plat et en terminant soit par la dernière page qui comporte une empreinte d'impression ou d'illustration, soit par le second plat, selon la cas. Tous les autres exemplaires originaux sont filmés en commençant par la première page qui comporte une empreinte d'impression ou d'illustration et en terminant par la dernière page qui comporte une telle empreinte.

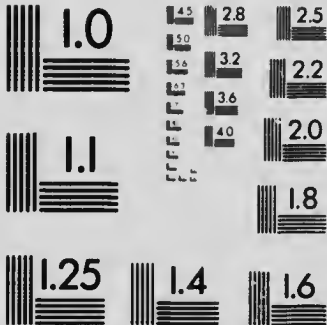
Un des symboles suivants apparaîtra sur la dernière image de chaque microfiche, selon le cas: le symbole  $\rightarrow$  signifie "A SUIVRE", le symbole  $\nabla$  signifie "FIN".

Les cartes, planches, tableaux, etc., peuvent être filmés à des taux de réduction différents. Lorsque le document est trop grand pour être reproduit en un seul cliché, il est filmé à partir de l'angle supérieur gauche, de gauche à droite, et de haut en bas, en prenant le nombre d'images nécessaire. Les diagrammes suivants illustrent la méthode.



# MICROCOPY RESOLUTION TEST CHART

(ANSI and ISO TEST CHART No. 2)



**APPLIED IMAGE Inc**

1653 East Main Street  
Rochester, New York 14609 USA  
(716) 482 - 0300 - Phone  
(716) 288 - 5989 - Fax

REPORT  
OF THE  
CANADIAN ARCTIC EXPEDITION  
1913-18

VOLUME VIII: MOLLUSKS, ECHINODERMS,  
COELENTERATES, ETC.

PART I: HYDROIDS

By C. McLEAN FRASER



G  
670  
1913  
F21  
v. 8  
pt. 1  
c. 3

OTTAWA  
F. A. ACLAND  
PRINTER TO THE KING'S MOST EXCELLENT MAJESTY  
1922

Issued August 24, 1922

## Report of the Canadian Arctic Expedition, 1913-18.

### VOLUME I: NARRATIVE OF THE EXPEDITION

- Part A: NORTHERN PARTY, 1913-15. By Vilhjalmur Stefansson. (In preparation).  
 Part B: SOUTHERN PARTY, 1913-16. By Rudolph Martin Anderson. (In preparation).

### VOLUME II: MAMMALS AND BIRDS

- Part A: MAMMALS OF WESTERN ARCTIC AMERICA. (In preparation).  
 By Rudolph Martin Anderson.  
 Part B: BIRDS OF WESTERN ARCTIC AMERICA. (In preparation).  
 By R. M. Anderson and P. A. Taverner.

### VOLUME III: INSECTS

- INTRODUCTION. By C. Gordon Hewitt. (Issued December 10, 1920).  
 Part A: COLLEMBOLA. By Justus W. Folsom. (Issued July 10, 1919).  
 Part B: NEUROPTEROID INSECTS. By Nathan Banks. (Issued July 11, 1919).  
 Part C: DIPTERA.  
     Crane-flies. By Charles P. Alexander.  
     Mosquitoes. By Harrison G. Dyar.  
     Diptera (excluding Tipulidae and Culicidae). By J. R. Malloch. (Issued July 14, 1919).  
 Part D: MALLOPHAGA AND ANOPLURA.  
     Mallophaga. By A. W. Baker.  
     Anoplura. By G. F. Ferris and G. H. F. Nuttall. (Issued September 12, 1919).  
 Part E: COLEOPTERA.  
     Forest Insects, including Ipidae, Cerambycidae, and Buprestidae. By J. M. Swaine.  
     Carabidae and Silphidae. By H. C. Fall.  
     Coccinellidae, Elateridae, Chrysomelidae and Rhyngophora (excluding Ipidae).  
         By C. W. Long. (Issued December 18, 1919).  
 Part F: HEMIPTERA. By Edward P. VanDuzee. (Issued July 11, 1919).  
 Part G: HYMENOPTERA AND PLANT GALLS.  
     Sawflies. (Tenthredinoidea). By Alex. D. MacGillivray.  
     Parasitic Hymenoptera. By Charles T. Brues.  
     Wasps and Bees. By F. W. L. Sladen.  
     Plant Galls. By E. Porter Felt. (Issued November 3, 1919).  
 Part H: SPIDERS, MITES AND MYRIAPODS.  
     Spiders. By J. H. Emerton.  
     Mites. By Nathan Banks.  
     Myriapods. By Ralph V. Chamberlain. (Issued July 14, 1919).  
 Part I: LEPIDOPTERA. By Arthur Gibson. (Issued January 10, 1920).  
 Part J: ORTHOPTERA. By E. M. Walker. (Issued September 4, 1920).  
 Part K: GENERAL OBSERVATIONS ON INSECT LIFE IN THE ARCTIC.  
     By Frits Johansen. (In press).

### VOLUME IV: BOTANY

- Part A: FRESHWATER ALGAE AND FRESHWATER DIATOMS. By Charles W. Lowe. (In preparation).  
 Part B: MARINE ALGAE. By F. S. Collins. (In preparation).  
 Part C: FUNGI. By John Dearness. (In preparation).  
 Part D: LICHENS. By G. K. Merrill. (In preparation).  
 Part E: MOSSES. By R. S. Williams. Issued February 8, 1921.

### VOLUME V: BOTANY

- Part A: FLOWERING PLANTS AND FERNS. By James M. Macoun. (In press).  
 Part B: CONTRIBUTIONS TO MORPHOLOGY, SYNONYMY, AND DISTRIBUTION OF ARCTIC PLANTS. By Thos. Holm. (In press).  
 Part C: GENERAL NOTES ON ARCTIC VEGETATION. By Thos. Holm. (In preparation).

### VOLUME VI: FISHES, TUNICATES,

- Part A: FISHES. By F. Johansen. (In preparation).  
 Part B: ASCIDIANS, ETC. By A. G. Huntsman. (In press).

### VOLUME VII: CRUSTACEA

- Part A: DECAPOD CRUSTACEANS. By Mary J. Rathbun. (Issued August 18, 1919).  
 Part B: SCHIZOPOD CRUSTACEANS. By Waldo L. Schmitt. (Issued September 22, 1919).  
 Part C: CLIMACEA. By W. T. Calman. (Issued October 16, 1920).  
 Part D: ISOPODA. By P. L. Boone. (Issued November 10, 1920).  
 Part E: AMPHIPODA. By Clarence R. Shoemaker. (Issued September 7, 1920).  
 Part F: PYCNOGONIDA. Leon J. Cole. (In press, January 3, 1921).  
 Part G: EUPHYLLOPODA. By F. Johansen. (Issued May 10, 1922).  
 Part H: CLADOCERA. By Chancey Juday. (Issued June 23, 1920).  
 Part I: OSTRACODA. By R. W. Sharpe. (In preparation).  
 Part J: FRESHWATER COPEPODA. By C. Dwight Marsh. (Issued April 21, 1920).  
 Part K: MARINE COPEPODA. By A. Willey. (Issued June 25, 1920).  
 Part L: PARASITIC COPEPODA. By Charles B. Wilson. (Issued August 6, 1920).  
 Part M: CIRRIPEIDIA. By H. A. Pilsbry. (In preparation).  
 Part N: CRUSTACEAN LIFE OF SOME ARCTIC LAGOONS, LAKES AND PONDS. By F. Johansen. (In press).

REPORT  
OF THE  
CANADIAN ARCTIC EXPEDITION  
1913-18

VOLUME VIII: MOLLUSKS, ECHINODERMS,  
COELENTERATES, ETC.

PART I: HYDROIDS

By C. McLEAN FRASER



OTTAWA  
J. A. AGLAND  
PRINTER TO THE KING'S MOST EXCELLENT MAJESTY  
1922



6570 1 2 000 1' I 03

## Hydroids of the Canadian Arctic Expedition, 1913-18.

By C. McLEAN FRASER

The number of hydroids collected by the Canadian Arctic Expedition was not large, but along with this collection Mr. Frits Johansen sent some that he collected in Hudson Bay in August, 1920, and some collected at other times, that were found in the Victoria Memorial Museum, Ottawa.

Taken altogether, the collection, although not large, is quite interesting, and as it is all from the north-west arctic regions, it is considered in the one report. The largest portion came from Richmond gulf, east coast of Hudson bay, where 17 out of a total of 25 marine species were obtained.

The species represented give support to the distribution theory advanced on previous occasions, i.e. that most of the hydroids of the north temperate seas, in all the families, with the exception of the Plumularidae, which, in any case, is not well represented, have had their origin in some Arctic centre from which there has been a circumpolar distribution and from this distribution, southward along each coast of each continent.

No new species has appeared in the collection. Of the 25 marine species obtained, *Abietinaria greenei* was found only in the Bering sea near the Aleutian islands. Previously, it had not been reported farther north than Vancouver island. Of the remaining 24, only one species had hitherto been found in the Pacific, and not to the eastward. This was *Hydractinia larvispina*, obtained from Gabriola pass (20 miles from the Biological Station, Nanaimo, B.C.) in 1921, and just described as a new species. If time of collecting were considered, Bernard harbour would be the original locality.

The species reported farther east and not in the Pacific are *Gonothyrea leoni*, *Maecium beani* and *Selaginopsis alternitheca*. The first two are common species on the eastern Canadian coasts, as well as in European waters, and they have not appeared so very far afield since the former was collected in Hudson strait and the latter in Hudson bay. *Selaginopsis alternitheca* was first reported from Davis strait. The only other appearance until now was in some material collected near Cheticamp, Cape Breton, in 1917.

A table will show the comparative distribution. The Arctic refers largely to the European Arctic, although it includes the Greenland area as well.

Besides the marine material, some specimens of *Hydra* were collected by Mr. Johansen, but they were not in good enough condition for classification. Some of them were obtained in a creek at Bernard harbour, Dolphin and Union strait, August 6, 1915. Johansen's record is as follows: "Attached to the underside of stones in the streaming water were many (fully outstretched ca. 15 mm. long) *Hydra* species of the following colour: suctorial disc at hind end, pale rosa; this colour getting first paler but afterwards increasing in intensity forwards; front end, strongly rosa; the 8 tentacle pale."

Some other specimens were obtained at Konganevik, Alaskan coast, but they were not kept, and the particulars are meagre. His note is as follows: "June 25, 1914. Konganevik (Camden bay), Alaskan arctic coast. In a tundra

	Pacific	Atlantic	Europe	Arctic
<i>Syncoryne eximia</i>	x		x	x
<i>Eudendrium tenellum</i>	x	x	x	x
<i>Hydractinia larispina</i>	x			
<i>Campanularia volubilis</i>	x	x	x	x
<i>Gonothyraea loveni</i>		x	x	x
<i>Obelia plicata</i>	x		x	
<i>Calycella syringa</i>	x	x	x	x
<i>Cuspidella grandis</i>	x	x	x	x
<i>Opercularella laevis</i>	x	x	x	x
<i>Halecium beanii</i>		x	x	x
<i>Halecium labrosum</i>	x	x	x	
<i>Halecium muricatum</i>	x	x	x	x
<i>Halecium tenellum</i>	x	x	x	x
<i>Filellum serpens</i>	x	x	x	x
<i>Lafca dumosa</i>	x	x	x	x
<i>Lafca fruticosa</i>	x	x	x	x
<i>Lafca gracillima</i>	x	x	x	x
<i>Abietinaria greenii</i>	x			
<i>Abietinaria turgida</i>	x			x
<i>Diphastia pulchra</i>	x	x		x
<i>Selaginopsis alternitheca</i>		x		x
<i>Sertularella fusiformis</i>	x	x	x	
<i>Sertularella polyzonias</i>	x	x	x	x
<i>Sertularella tricuspidata</i>	x	x	x	x
<i>Thuiaria similis</i>	x	x		

pond I found attached to water plants, minute, 1 cm. long (fully outstretched, including the five arms), bright red *Hydra* species forming their typical known spores on the side of the 'stalk.' I tried to keep them alive, but they died and rotted later. The temperature of the margin of the pond was 51° F. (2 p.m.)."

#### SPECIES AND DISTRIBUTION

##### Family SYNCORYNIDAE

*Syncoryne eximia* Allman. —Richmond gulf, 15-20 fathoms.

##### Family EUDENDRIDAE

*Eudendrium tenellum* Allman. —Richmond gulf, 15-20 fathoms.

##### Family HYDRACTINIDAE

*Hydractinia larispina* Fraser. —Station 41, Bernard harbour, N.W.T., 3-5 fathoms, July 20, 1915.

##### Family CAMPANULARIDAE

*Campanularia volubilis* (Linn.) —Richmond gulf, 15-20 fathoms.

*Gonothyraea loveni* (Allman). —Richmond gulf, 15-20 fathoms.

*Obelia plicata*, Hincks. —Small island between Long island and Cape Jones, east coast of Hudson bay. Beach water.

##### Family CAMPANULINIDAE

*Calycella syringa* (Linn.) —Port Burwell, Ungava. "Neptune" Expedition, 1903-04; between Black Whale and Olaska harbours, east coast of Hudson bay, 10 fathoms; Richmond gulf, 15-20 fathoms.

- Cuspidella grandis* Hincks.—Richmond gulf, 15-20 fathoms; Station 13b, Dolphin and Union strait, N.W.T., 50-60 metres, September 14, 1915.  
*Opercularella laeocrata* (Johnston).—Richmond gulf, 15-20 fathoms.

Family **HALECIDAE**

- Halecium beani* (Johnston).—King George's sound, south side of Hudson strait, 40 fathoms, "Diana" Expedition, September, 1897.  
*Halecium labrosum*, Alder.—Richmond gulf, 15-20 fathoms.  
*Halecium muricatum* (Ellis and Solander).—Richmond gulf, 15-20 fathoms.  
*Halecium tenellum*, Hincks.—King George sound, south side of Hudson strait, 40 fathoms; Port Burwell, Ungava; Richmond gulf, 15-20 fathoms.

Family **LAFOEIDAE**

- Filellum serpens* (Hassell).—Richmond gulf, 15-20 fathoms.  
*Lafsa dumosa* (Fleming).—Richmond gulf, 15-20 fathoms.  
*Lafsa fruticosa* Sars.—Richmond gulf, 15-20 fathoms.  
*Lafsa gracillima* (Alder).—Richmond gulf, 15-20 fathoms.

Family **SERTULARIDAE**

- Abietinaria greenii* (Murray).—Station 14, Bering sea, near Unimak, Alaska, July 2, 1913. Surface.  
*Abietinaria turgida* (Clark).—Between Blackwhale and Olaska harbours, east coast of Hudson bay, 10 fathoms; Richmond gulf, 15-20 fathoms; Station 19 a-c, off Norton sound, Alaska, July 8, 1913, surface; Station 14, Bering sea, near Unimak island, Alaska.  
*Diphasia pulehra* Nutting.—Bay on east side of Grey Goose island (lat. 54° N.), east side of James bay, 10 fathoms.  
*Setaginopsis alternitheca* (Levinson).—Station 27s, Collinson point, Alaska, 3 fathoms, October 3, 1913.  
*Sertularella fusiformis* (Hincks).—King George sound, south side of Hudson strait, 40 fathoms.  
*Sertularella polyzonias* (Linn.).—King George sound, south side of Hudson strait, 40 fathoms; Richmond gulf, 15-20 fathoms.  
*Sertularella tricuspidata* (Alder).—Station 22, near Icy cape, Alaska, 11-12 fathoms, August 17, 1913, Richmond gulf, 15-20 fathoms.  
*Thuiaria similis* (Clark).—Station 22, near Icy cape, Alaska, 11-12 fathoms; Richmond gulf; 15-20 fathoms.

DEPARTMENT OF ZOOLOGY,  
 UNIVERSITY OF BRITISH COLUMBIA,  
 VANCOUVER.

NOTE.—For synonymy and bibliography see previous papers, especially,  
 The Hydroids of the west coast of North America: Bulletin from the Laboratories of Natural History,  
 State University of Iowa, 1911, pp. 1-91.  
 Some hydroids of the Vancouver island region: Transactions of the Royal Society of Canada, Ser. 3,  
 vol. viii, Sec. iv, 1914, pp. 99-216.  
 Hydroids of eastern Canada: Contributions to Canadian Biology, 1918, pp. 329-356.

5



## Report of the Canadian Arctic Expedition, 1913-18.

### VOLUME VIII: MOLLUSKS, ECHINODERMS, COELENTERATES, ETC

- Part A: MOLLUSKS, RECENT AND PLEISTOCENE. By William H. Dall. *(Issued September 24, 1919).*
- Part B: CEPHALOPODA AND PTEROPODA.  
Cephalopoda. By S. S. Berry.  
Pteropoda. By W. F. Clapp. *(In preparation).*
- Part C: ECHINODERMS. By Austin H. Clark. *(Issued April 6, 1920).*
- Part D: BRYOZOA. By R. C. Osburn. *(In preparation).*
- Part E: ROTATORIA. By H. K. Harring. *(In preparation).*
- Part F: CILIVETOGNATHA. By A. G. Huntsman. *(In preparation).*
- Part G: ALCYONARIA AND ACTINARIA. By A. E. Verrill. *(In press).*
- Part H: MEDUSAE AND CTENOPHORA. By H. B. Bigelow. *(Issued June 30, 1920).*
- Part I: HYDROIDS. By C. McLean Fraser. *(In press).*
- Part J: PORIFERA. By A. Denny. *(In preparation).*

### VOLUME IX: ANNELIDS, PARASITIC WORMS, PROTOZOANS, ETC.

- Part A: OLIGOCHAETA.  
Lumbriculidae. By Frank Smith.  
Enchytraelidae. By Paul S. Welch. *(Issued September 29, 1919).*
- Part B: POLYCHAETA. By Ralph V. Chamberlin. *(Issued November 16, 1920).*
- Part C: HIRUDINEA. By J. P. Moore. *(Issued February 4, 1921).*
- Part D: GEPHYREA. By Ralph V. Chamberlin. *(Issued June 10, 1920).*
- Part E: ACANTHOCEPHALA. By H. J. Van Cleave. *(Issued April 7, 1920).*
- Part F: NEMATODA. By N. A. Cobb. *(In preparation).*
- Part G-H: TREMATODA AND CESTODA. By A. R. Cooper. *(Issued February 4, 1921).*
- Part I: TURBELLARIA. By A. Hassell. *(In preparation).*
- Part J: GORDIACEA.
- Part K: NEMERTINI. By Ralph V. Chamberlin. *(In preparation).*
- Part L: SPOROZOA. By J. V. Mavor. *(In preparation).*
- Part M: FORAMINIFERA. By J. A. Cushman. *(Issued February 8, 1920).*

### VOLUME X: PLANKTON, HYDROGRAPHY, TIDES, ETC.

- Part A: PLANKTON. By Albert Mann. *(In preparation).*
- Part B: MARINE DIATOMS. By L. W. Bailey. *(In preparation).*
- Part C: TIDAL OBSERVATIONS AND RESULTS. By W. Bell Dawson. *(Issued October 1, 1920).*
- Part D: HYDROGRAPHY. *(In preparation).*

### VOLUME XI: GEOLOGY AND GEOGRAPHY

- Part A: THE GEOLOGY OF THE ARCTIC COAST OF CANADA, WEST OF THE KENT PENINSULA. By J. J. O'Neill. *(In preparation).*
- Part B: MAPS AND GEOGRAPHICAL NOTES. By Kenneth G. Chipman and John R. Cox. *(In preparation).*

### VOLUME XII: THE COPPER ESKIMOS (One part, complete)

- THE LIFE OF THE COPPER ESKIMOS. By D. Jenness. *(In press).*

### VOLUME XIII: PHYSICAL CHARACTERISTICS AND TECHNOLOGY OF THE WESTERN AND CENTRAL ESKIMOS

- Part A: THE PHYSICAL CHARACTERISTICS OF THE WESTERN AND COPPER ESKIMOS. By D. Jenness. *(In preparation).*
- Part B: OSTEOLOGY OF THE WESTERN AND CENTRAL ESKIMOS  
By John Cameron. *(In preparation).*
- Part C: TECHNOLOGY OF THE COPPER ESKIMOS. *(To be prepared).*

### VOLUME XIV: ESKIMO FOLK-LORE AND LANGUAGE

- Part A: FOLK-LORE, WITH TEXT FROM ALASKA, THE MACKENZIE DELTA, AND CORONATION GULF. By D. Jenness. *(In preparation).*
- Part B: COMPARATIVE GRAMMAR AND VOCABULARY OF THE ESKIMO DIALECTS OF POINT BARROW, THE MACKENZIE DELTA, AND CORONATION GULF.  
By D. Jenness. *(In preparation).*

### VOLUME XV: ESKIMO STRING FIGURES AND SONGS

- Part A: STRING FIGURES OF THE ESKIMOS. By D. Jenness. *(Ready for press).*
- Part B: SONGS OF THE COPPER ESKIMOS.  
By Helen H. Roberts and D. Jenness. *(In preparation).*

### VOLUME XVI: ARCHAEOLOGY

- CONTRIBUTIONS TO THE ARCHAEOLOGY OF WESTERN ARCTIC AMERICA.  
*(To be prepared).*





