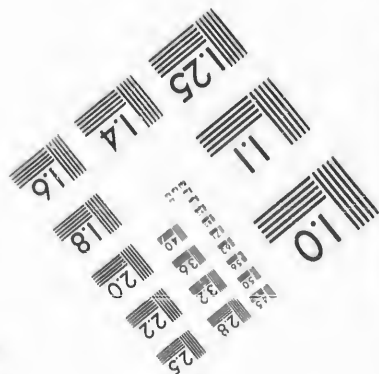
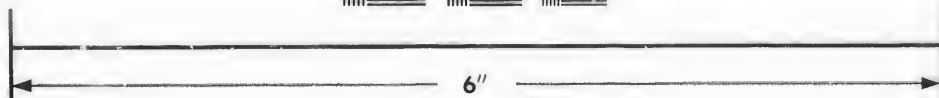
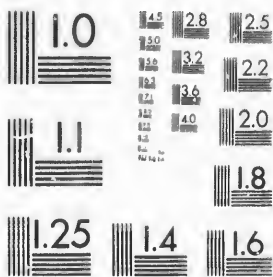


**IMAGE EVALUATION  
TEST TARGET (MT-3)**



**Photographic  
Sciences  
Corporation**

23 WEST MAIN STREET  
WEBSTER, N.Y. 14580  
(716) 872-4503

15  
12  
12.8  
13.2  
13.6  
22  
20  
1.8

**CIHM/ICMH  
Microfiche  
Series.**

**CIHM/ICMH  
Collection de  
microfiches.**



Canadian Institute for Historical Microreproductions / Institut canadien de microreproductions historiques

10

**© 1987**

Technical and Bibliographic Notes/Notes techniques et bibliographiques

The Institute has attempted to obtain the best original copy available for filming. Features of this copy which may be bibliographically unique, which may alter any of the images in the reproduction, or which may significantly change the usual method of filming, are checked below.

L'Institut a microfilmé le meilleur exemplaire qu'il lui a été possible de se procurer. Les détails de cet exemplaire qui sont peut-être uniques du point de vue bibliographique, qui peuvent modifier une image reproduite, ou qui peuvent exiger une modification dans la méthode normale de filmage sont indiqués ci-dessous.

Coloured covers/  
Couverture de couleur

Covers damaged/  
Couverture endommagée

Covers restored and/or laminated/  
Couverture restaurée et/ou pelliculée

Cover title missing/  
Le titre de couverture manque

Coloured maps/  
Cartes géographiques en couleur

Coloured ink (i.e. other than blue or black)/  
Encre de couleur (i.e. autre que bleue ou noire)

Coloured plates and/or illustrations/  
Planches et/ou illustrations en couleur

Bound with other material/  
Relié avec d'autres documents

Tight binding may cause shadows or distortion along interior margin/  
La reliure serrée peut causer de l'ombre ou de la distorsion le long de la marge intérieure

Blank leaves added during restoration may appear within the text. Whenever possible, these have been omitted from filming/  
Il se peut que certaines pages blanches ajoutées lors d'une restauration apparaissent dans le texte, mais, lorsque cela était possible, ces pages n'ont pas été filmées.

Additional comments:  
Commentaires supplémentaires:

Coloured pages/  
Pages de couleur

Pages damaged/  
Pages endommagées

Pages restored and/or laminated/  
Pages restaurées et/ou pelliculées

Pages discoloured, stained or foxed/  
Pages décolorées, tachetées ou piquées

Pages detached/  
Pages détachées

Showthrough/  
Transparence

Quality of print varies/  
Qualité inégale de l'impression

Includes supplementary material/  
Comprend du matériel supplémentaire

Only edition available/  
Seule édition disponible

Pages wholly or partially obscured by errata slips, tissues, etc., have been refilmed to ensure the best possible image/  
Les pages totalement ou partiellement obscurcies par un feuillet d'errata, une pelure, etc., ont été filmées à nouveau de façon à obtenir la meilleure image possible.

This item is filmed at the reduction ratio checked below/  
Ce document est filmé au taux de réduction indiqué ci-dessous.

10X	12X	14X	16X	18X	20X	22X	24X	26X	28X	30X	32X
						✓					

The copy filmed here has been reproduced thanks to the generosity of:

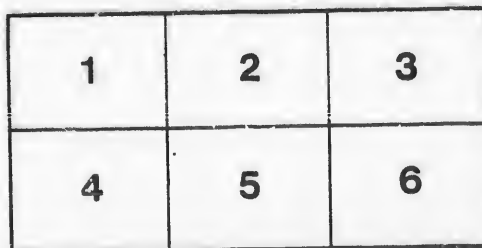
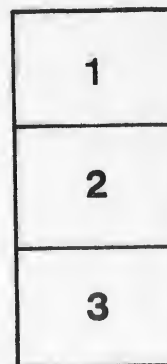
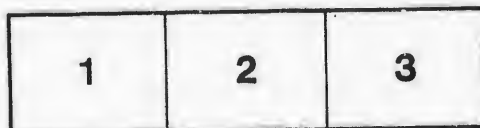
D. B. Weldon Library  
University of Western Ontario  
(Regional History Room)

The images appearing here are the best quality possible considering the condition and legibility of the original copy and in keeping with the filming contract specifications.

Original copies in printed paper covers are filmed beginning with the front cover and ending on the last page with a printed or illustrated impression, or the back cover when appropriate. All other original copies are filmed beginning on the first page with a printed or illustrated impression, and ending on the last page with a printed or illustrated impression.

The last recorded frame on each microfiche shall contain the symbol  $\rightarrow$  (meaning "CONTINUED"), or the symbol  $\nabla$  (meaning "END"), whichever applies.

Maps, plates, charts, etc., may be filmed at different reduction ratios. Those too large to be entirely included in one exposure are filmed beginning in the upper left hand corner, left to right and top to bottom, as many frames as required. The following diagrams illustrate the method:



L'exemplaire filmé fut reproduit grâce à la générosité de:

D. B. Weldon Library  
University of Western Ontario  
(Regional History Room)

Les images suivantes ont été reproduites avec le plus grand soin, compte tenu de la condition et de la netteté de l'exemplaire filmé, et en conformité avec les conditions du contrat de filmage.

Les exemplaires originaux dont la couverture en papier est imprimée sont filmés en commençant par le premier plat et en terminant soit par la dernière page qui comporte une empreinte d'impression ou d'illustration, soit par le second plat, selon le cas. Tous les autres exemplaires originaux sont filmés en commençant par la première page qui comporte une empreinte d'impression ou d'illustration et en terminant par la dernière page qui comporte une telle empreinte.

Un des symboles suivants apparaîtra sur la dernière image de chaque microfiche, selon le cas: le symbole  $\rightarrow$  signifie "A SUIVRE", le symbole  $\nabla$  signifie "FIN".

Les cartes, planches, tableaux, etc., peuvent être filmés à des taux de réduction différents. Lorsque le document est trop grand pour être reproduit en un seul cliché, il est filmé à partir de l'angle supérieur gauche, de gauche à droite, et de haut en bas, en prenant le nombre d'images nécessaire. Les diagrammes suivants illustrent la méthode.

*Revised List 1891 Lucan  
For Clerk of the Peace*

# VOTERS' LIST

FOR THE

# Village of Lucan

FOR

The Year 1891 ..

*Dr. R. ...  
filed  
Oct 19  
D. ...*

The Sheriff shall, immediately upon receipt of his copies, cause one of them to be posted up in a conspicuous place in the Court House. The clerk of the Peace upon receipt of his copies, shall cause one of them to be posted up in a conspicuous place in his office. Every public or separate school head master or mistress, shall, in like manner, post up one of his or her copies on the door of the school house, and every postmaster shall post up one of his copies in his post office.—Voters' List Act, 1889, Chap. 3, Sec. 8.



LUCAN, ONT. :

PRINTED AT THE OFFICE OF THE LUCAN RECORD (BRYANT BROTHERS)

1891.

1881

## Polling Sub-Division No. 1.

PART 1.—Persons entitled to vote at both Municipal and Legislative Assembly Elections.

Jurors	No on Reli	NAME.	Profession	Con. or St.	Lot or Pt of Lot.	Class.
j	4	Armitage, William	Laborer	Con 4	10	f m f
j	24	Armitage, J R	Agent	Princess st	202	f m f
j	37	Armitage, J R	Merchant	Main st	pt 190	f m f
	35	Armitage, Malcolm	Clerk	Main st	pt 190	o s m f
j	69	Atkinson, David	Farmer	S L R	pt farm 4	f m f
	70	Atkinson, Thomas	Farmer	S L R	pt farm 4	f m f
j	216	Armitage, James	S Cutter	William st	8	f m f
	31	Bryant, Richard	Printer	William st	w pt 6	f m f
	31	Bryant, Wm	Printer	William st	w pt 6	f m f
	51	Bayley, Dr	M D	Main st	n pt 1	t m f
j	62	Butler, E	Gentleman	Main st	58, 59	f m f
j	71	Burnett, James	Farmer	S L R	pt farm 4	f m f
	205	Bayley, R A	Lawyer	William st	pt 4	t m f
j	225	Bawden, George	Bricklayer	William st	17	t m f
j	242	Braithwaite, A T	Enginedriver	Frank st	s pt 2	t m f
j	261	Bell, Joseph	Laborer	George st	63	t m f
	262	Bell, Thomas	Laborer	George st	66	t m f
j	265	Brampton, Wm	Laborer	George st	60	f m f
	266	Brampton, Wm jr	Barber	George st	60	o s m f
	267	Brand, Fred	Carpenter	S L R	pt 5	t m f
j	270	Butler, Peter	Farmer	S L R	pt 5	f m f
j	271	Butler, Peter E	Farmer	S L R	pt 5	f m f
j	273	Butler, Everet	Laborer	S L R	pt 5	f m f
j	276	Casey, Thos		Butler st	152, 153	f m f
	1	Casey, Thomas	Laborer	Con 4	12	f m f
	2	Carty, Con	Laborer	Con 4	11	f m f
	17	Clerke, H. S	M D	Main st	256	f m f

No on Roll	NAME	Profession	Con. or St.	Lot or pt of Lot	Class.
j 27	Cathcart, Geo	Shoemaker	Princess st	43	f m f
j 44	Collins, Robert	Tinsmith	Market st	130	f m f
j 59	Creighton, Thos	Hotelkeeper	Main st	n pt 30	f m f
j 202	Cubbon, Thomas	Merchant	William st	w pt 5	f m f
j 221	Cain, John	Hotelkeeper	William st	pt 5	f m f
j 250	Caves, Robert	Carpenter	Water st	45, 46	t m f
j 250	Caves, Alexander	Laborer	Water st	45, 46	f m f
271	Collison, Martin	Farmer	Albert st	58	f m f
j 259	Donevan, Wm	Foundryman	George st	72, 73	f m f
i 237	Dagg, John	Laborer	Frank st	25	f m f
j 232	Durham, Michael	Gentleman	Frank st	21	f m f
j 226	Dight, Norris	Grainbuyer	William st	n pt 18	f m f
j 156	Drought, Richard	Farmer	Main st	w pt 29	f m f
209	Deacon, Matthew	Laborer	William st	2	o s m f
210	Deacon, James	Laborer	William st	2	o s m f
211	Deacon, Wm H.	Laborer	William st	2	o s m f
j 212	Deacon, John	Farmer	William st	1	f m f
j 232	Dnrham, Leonard	Gentleman	Frank st	21	f m f
j 6	Eedy, John	V S.	Elm st	pt 57	o s m f
j 25	Edwards, C B	Teacher	Princess st	199	t m f
j 60	Ellwood, Wm	Tailor	Main st	55, 56, 57	f m f
j 25	Fogarty, Patrick	Farmer	Princess st	199	f m f
j 52	Farrell, John	Druggist	Main st	n pt 2	f m f
j 204	Fox, Robert	Lawyer	William st	w pt 4	f m f
j 207	Gibson, Wilson	Carpenter	William st	w pt 3	f m f
j 223	Gibson, Sylvanius	Carpenter	William st	76, 77, 78	f m f
j 252	Gibson, Edward	Carpenter	William st	pt 80	t m f
j 260	Gibson, Herbert	Carpenter	George st	71	f m f



Class.	Jurors	No or Roll	NAME.	Profession	Con. or St.	Lot or Pt of Lot.	Class.
f m f	j	10	Haskett, Thos W	Gentleman	Main st	265	f m f
f m f	j	55	Haskett, Charles	Cabinetmaker	Main st	pt 28	t m f
f m f	j	61	Husband, Thos	Painter	Main st	58, 59	t m f
f m f	j	68	Howard, Thos	Carpenter	S L R	pt farm 4	f m f
f m f	j	203	Hodgins, Saml	Gentleman	William st	e pt 4	t m f
t m f	j	219	Hodgins, J A	St Master	S L R	pt 5	f m f
f m f	j	227	Hodgins, Geo	Farmer	William st	e pt 18	f m f
f m f	j	228	Harleton, Thomas	Laborer	Frank st	19	f m f
	j	243	Hodgins, Thos	Laborer	Water st	54	t m f
		244	Hodgins, Henry	Gentleman	Water st	53	f m f
f m f	j	249	Hodgins, Geo W	Bailiff	Water st	47	f m f
f m f		269	Hoit, Louis	Watchman	S L R	pt 5	t m f
f m f		275	Hutchins, Wm H	Grainbuyer	G T R	Storehouse	f m f
f m f	j	50	Hawkshaw, William	Merchant	Main st	pt 1	t m f
f m f							
s m f	j	214	Judge, Wesley	Farmer	William st	7	f m f
s m f	j	277	Judd, Isaac	Farmer	Walnut st	112	t m f
f m f							
f m f	j	9	Kitt, Thos	Lumber Merchant	Main st	267	f m f
	j	8	Lusk, James	Farmer	Main st	268	f m f
s m f	j	14	Mayo, James	Laborer	Main st	261, 262	f m f
t m f	j	26	Mulloy, C W	Teacher	Princess st	44, 45	t m f
f m f							
	j	40	McLean, Robert	Hotelkeeper	Main st	188, 189	f m f
		41	McLean, Ed	V S	Princess st	70	f m f
f m f	j	42	McCosh, Donald	Merchant	Main st	pt 188	t m f
f m f	j	45	McDiarmid, Wm	Lawyer	Main st	pt 187	t m f
	j	59	McColl, J D	Hotelkeeper	Main st	n pt 30	t m f
f m f	j	65	McIlhargey, Dennis	Farmer	S L R	pt farm 5	f m f
f m f	j	234	McLean, Samuel	Gentlemen	Frank st	e pt 23	f m f
t m f	j	239	Maguire, David	Laborer	Frank st	e pt 23	t m f
f m f	j	276	McLeod, John	Laborer	Butler st	152, 153	t m f

Class.	No on Roll	NAME	Profession	Con. or St.	Lot or pt of Lot	Class.
j	258	Neil, Francis	Gentleman	George st.	74, 75	f m f
j	226	Norton, Thos	Engineer	William st.	n pt 18	t m f
j	240	Neil, Richard	Agent	Frank st.	6	f m f
j	19	O'Neil, R H	Banker	Main st.	253	f m f
j	20	O'Neil, R A	Bank Clerk	Main st.	253	o s m f
	34	O'Neil, F A	Banker	Main st pt 199, pt 200		f m f
j	53	Orme, J W	Stagedriver	Main st.	27	f m f
j	218	O'Shea, Daniel	Laborer	William st	10, 11	o s m f
j	238	Orme, Thos	Gentleman	Frank st.	26	f m f
j	32	Porte, Wm	Postmaster	Main st.	pts 199, 200	f m f
	222	Patrick, Lorene	Farmer	William st.	pt 5	f m f
j	258	Parker, Geo	Cooper	George st	74, 75	f m f
	241	Quarry, H B		Frank st	435	f m f
j	257	Robinson, Henry	Blacksmith	Water st	31, 32, 33, 34	f m f
j	46	Reid, Wm	Liverykeeper	Main st.	e pt 149	f m f
j	54	Ryan, John	Laborer	Main st.	pt 28	t m f
j	12	Routledge, Joseph	V S.	Main st	263, 264	f m f
j	245	Ryan, Francis	Farmer	Water st.	52	f m f
j	247	Ryan John	Farmer	Water st	50	f m f
j	255	Russel, Jessie	Laborer	Water st	35, 36	f m f
j	256	Russel, Francis	Laborer	Water st.	35, 36	f m f
j	268	Saddleir, James	Agent G. T. R.	S L R.	pt 5	t m f
j	3	Sheridan, James	Laborer	Con 4.	11	f m f
j	2	Sheridan, James	Laborer	Con 4.	11	f m f
j	7	Stanley, James	Agent	Main st.	269, 270	f m f
j	11	Scott, Adam	Gentleman	Main st.	263, 264	f m f
j	15	Stewart, Henry	Laborer	Main st	259	t m f

Class.	No on Roll	NAME	Profession	Con. or St.	Lot or pt of Lot	Class
	29	Stanley, William	Agent	Main st	epi 6	f m f
	43	Seeli, David	Tailor	Main st	pt 138	t m f
j	62	Stanley, Bernard	Gentlemen	Main st	pt farm 5	f m f
j	63	Stanley, A E	Grain Buyer	Main st	pt farm 5	f m f
	64	Shaw, Rev	Preacher	S L R	pt farm 5	t m f
j	66	Shaw, Thos	Gentleman	S L R	pt farm 4	f m f
	67	Shaw, Wesley	M. D.	S L R	pt farm 4	o s m f
j	215	Scott, Stewart	Farmer	William st	8	t m f
j	224	Stewardson, James	Laborer	William st	16	f m f
j	230	Sproul, Charles	Carriage maker	Frank st	20	f m f
j	239	Sproul, William	Blacksmith	Frank st	7	f m f
j	236	Simpson, Joseph	Laborer	Frank st	24	f m f
j	246	Stanley, Leonard	Merchant	Water st	5	t m f
j	248	Stewardson, John	Pumpmaker	Water st	48, 49	f m f
j	246	Stanley, Thomas	Gentleman	Water st	51	f m f
j	13	Trevitick, Samuel	Gentleman	Elm st	69	f m f
j	16	Tennant Ezekiel	V. S.	Main st	257	f m f
j	254	Taylor, Stewart	Carpenter	Water st	40	f m f
	264	Turner, Elijah	Farmer	George st	63	f m f
j	35	Wilson, James	Baker	Main st	pt 191	t m f
j	220	Young, William	Laborer	S L R	pt 5	f m f
PART II.—Persons entitled to vote at Municipal Elections only.						
	238	Atkinson, Mrs		Frank st	22	f
	198	Bryant, Mrs		Con 4	w pt 3	f
	58	Dowe, Mrs		Main st	e pt 30	f
	208	Deacon, Mrs		William st	2	f

Jurors	No on Roll	NAME.	Profession	Con. or St.	Lot or Pt of Lot.	Class.
	212	Deacon, Mrs		William st	1	f
	274	Davis Mrs		S L R	pt 5	f
		Eedy, Mrs		Main st.	271, 272, 273	f
	251	Gillispie, Mrs		Water st	54	f
	49	Hawkshaw, Mrs		Main st	pt 1	f
	72	Howard, Mrs		S L R	pt farm 4	f
	225	Hodgins, Mrs H		William st	17	f
	252	Hodgins, Mrs		William st	pt 8	f
	51	Johnston, Mrs		Main st	w pt 30	f
	23	Jones, Mrs		Princess st	202	f
	209	Judge, Mrs		William st	9	f
	21	Lintott, Mrs		Princess st	205	f
	28	Lee, Mrs		Main st	41	f
	206	McRoberts, Mrs		William st	e pt 3	f
	239	McGuire, Mrs		Frank st	n pt 23	f
	216	Meads, Mrs		William st	12	f
	217	O'Shea, Mrs		William st	10, 11	f
		O'Boyle, Mrs		Elm st	e pt 69	f
	201	Sproat Mrs		William st	e pt 5	f
	47	Thompson, Mrs		Main st	pt 187	t
	22	Willis, Mrs		Princess st	203, 204	f
	251	Wright, Mrs		Water st	44	f

PART III.—Persons entitled to vote at Legislative Elections only.

36	Bell, Wm	Baker	Main st	pt 191	m f
229	Hodgins, John	Clerk	Frank st	19	m f
286	McMahon, Jas	Gentleman	Main st	41	m f
272	Mountain, Richard	Shoemaker	S L R	pt 5	m f
278	McLeod, Robert	Clerk	Main st	189	m f
282	Mains, Albert	Cheese maker	S L R	pt 5	m f
280	Parker, Walter	Cooper	George st	74, 75	m f
236	Sproul, William	Laborer	Frank st	20	m f
279	Sceli, Alex	Tailor	Main st	188	m f
281	Snell, Frank	Laborer	Main st	189	m f

## Polling Sub-Division No. 2,

PART 1.—Persons entitled to vote at both Municipal and Legislative Assembly Elections.

No on Roll	NAME	Profession	Con. or St.	Lot or pt of Lot	Class.
j 147	Andersca, James	Carriagemaker	Alice st	10	f m f
j 181	Allway, James	Laborer	Maple st	147, 148	f m f
j 196	Avery, John	Laborer	Maple st	a pt 62	t m f
j 80	Brunwell, Richard	Gentleman	Main st	103, 104	f m f
j 84	Bawden, John	Bricklayer	Main st	e pt 93, 94	f m f
j 132	Bawden, W J	Mason	Princess st	35, 36	f m f
j 182	Blackwell, Edward	Laborer	Maple st	136	f m f
j 183	Blackwell T J	Laborer	Maple st	136	o s m f
j 190	Bryant, Albert	Laborer	Con 4	w pt 3	f m f
j 169	Cooper, James	Laborer	Market st	101	f m f
j 177	Collins, Henry	Tinsmith	Market st	129	f m f
j 178	Collins, E J	Tinsmith	Market st	129	o s m f
j 200	Cooper, Wm	Machinist	Beech st	9	f m f
j 100	Diamond, William	Merchant	Main st	n pt 158	f m f
j 132	Davis, F J	Blacksmith	Princess st	35, 36	t m f
j 151	Downham, Peter	Cheesemaker	Alice st	e pt 7	f m f
j 153	Dight, Thomas	Grainmerchant	Alice st	167	f m f
j 197	Davis, James	Gentleman	Beech st	64	f m f
j 198	Davis, William	Gentleman	Beech st	61	f m f
j 115	Ellis, G A	Artist	Main st	n pt 7	t m f
j 96	Fox, Leonard	Merchant	Main st	88	f m f
j 165	Fox, John	Banker	Main st	e pt 60	r m f
j 120	Frise, A H	Barber	Main st	243, 244, 245	f m f
j 148	Frank, J C	Clerk	Alice st	n pt 8	t m f
j 81	Gest, Robert	Gentleman	Main st	99, 100	f m f
j 103	Grant, J R	Merchant	Main st	159	t m f
j 138	Gillispie, James	Gentleman	Princess st		f m f
j 157	Gillies, James	Merchant	Alice st	170, 171, 172	f m f

Jurors	No on Roll	NAME.	Profession	Con. or St.	Lot or Pt of Lot.	Class.
j	180	Hodgins, Jonathan	Drover	Beech st	133, 164	f m f
j	176	Hawkshaw, Caleb	Miller	Market st	126, 127	f m f
j	74	Hall, Joseph	Farmer	N L R	pt farm 4	o s m f
	75	Hall, Thomas	Farmer	N L R	pt farm 4	o s m f
j	77	Hodgins, Thomas	Merchant	Main st	111, 112	f m f
j	87	Hodgins, Thos	Blacksmith	Main st	91	f m f
j	102	Hodgins, Walter	Butcher	Main st	pt 159	t m f
j	107	Hodgins, R S	Merchant	Main st	e pt 161	f m f
j	118	Hossack, Thomas	Doctor	Main st	239	f m f
j	121	Hodgins, John	Gentleman	Main st	246, 247, 248	f m f
	124	Hodgins, John	Farmer	Main st	231	f m f
	125	Howard, William	Laborer	Con 4	226, 227, 228	f m f
j	135	Henders, Rev. R C	Clergyman	Princess st	38	t m f
j	143	Haskett, Mitchell	Gentleman	Alice st	15, 16, 17	f m f
j	151	Hodgins, J S	Agent	Alice st	e pt 165	f m f
j	155	Hodgins, William	Laborer	Alice st	169	f m f
j	158	Hodgins, George M	V S	Alice st	173	f m f
j	171	Hodgins, John C	Gentleman	Market st	99	f m f
j	172	Haskett, William	Drover	Market st	97, 98	f m f
j	174	Hooper, William F	Gentleman	Market st	94, 95, 63, 64	f m f
j	159	Jackson, John	Foundryman	Alice st	174, 175, 177	f m f
	160	Jackson, William	Foundryman	Alice st	174, 175, 177	o s m f
j	75	Kent, William	Gentleman	Main st	114, 115, 116, 117	f m f
j	163	Kenny, John jr	Blacksmith	Alice st	184	f m f
	194	Kinnee, John	Carpenter	Maple st	n pt 62	f m f
	196	Kinnee Peter	Laborer	Maple st	s pt 62	f m f
j	78	Langford, Joseph	Gentleman	Main st	107, 108, 109	f m f
j	184	Langford, William	Gentleman	Market st	105, 106	f m f

Class.	No on Roll	NAME	Profession	Con. or St.	Lot or pt of Lot	Class.	
j	82	McCosh, J D	Merchant	Main st	97, 98	f m f	
j	85	McNamara, Robert	Clerk	Main st	n pt 92	t m f	
j	88	Murdock, Thompson	Shoemaker	Main st	90	f m f	
j	89	Murdy, John	Upholsterer	Main st	91	f m f	
j	90	Murdy, Wellington	Farmer	Main st	91	f m f	
j	91	McLeod, William	Carriagemaker	Main st	82	f m f	
j	92	McNamee, Robert	Shoemaker	Main st	84, pt 85	t m f	
j	92	McConnell, J H	Tailor	Main st	84, pt 85	f m f	
j	97	Matheson, William	Jeweller	Main st	38	f m f	
j	101	McIlhargey, Patrick	Gentleman	Main st	159	f m f	
j	104	Mara, Edward	Merchant	Main st	n pt 61	f m f	
j	129	McKinnon, Donald	Laborer	Princess st	32	f m f	
j	146	Maguire, John	Carpenter	Alice st	11	f m f	
j	149	McCombs, James	Merchant	Alice st	w pt 165	t m f	
j	152	McRoberts, J H	Drover	Alice st	166	f m f	
	150	Neil, Albert		G T R	Alice st	e pt 7	f m f
j	93	O'Shea, James	Shoemaker	Main st	e pt 85	f m f	
j	98	O'Neil, Ralph	Hotelkeeper	Main st	157, pt 158	f m f	
j	131	O'Mara, John	Laborer	Con 4	pt 1	f m f	
j	145	O'Neil, Daniel	Gentleman	Alice st	13	f m f	
j	113	Pogue, George	Barber	Main st	pt 164	t m f	
j	114	Parks, J S	Harnessmaker	Main st	pt 164	t m f	
j	123	Patrick, William	Farmer	Con 4	229, 230	f r f	
j	175	Purley, Daniel B	Carpenter	Market st	pt 84	f m f	
j	144	Quigley, Caleb	Painter	Alice st	14	f m f	

Jurors	No on Roll	NAME.	Profession	Con. or St.	Lot or Pt of Lot.	Class.
j	165	Quigley, William	Shoemaker	Market st	104	f m f
	166	Quigley, Frank	Artist	Market st	104	o s m f
j	101	Robinson, George	Butcher	Main st	159	t m f
j	140	Robinson, William	Bricklayer	Alice st	21, 22	f m f
	149	Rollins, William	Farmer	Alice st	w pt 165	f m f
j	168	Robinson, Thomas	Carpenter	Market st	103	f m f
j	76	Simpson, William	Gentleman	Main st	113, 114	f m f
j	79	Stanley, W R	Clerk	Main st	105, 106	f m f
j	83	Stanley, W E	Merchant	Main st	95, 96	f m f
j	99	Stanley, Leonard	Merchant	Main st	e pt 158	t m f
j	109	Stanley, Charles	Merchant	Main st	162	f m f
j	112	Smith, Montgomery	Merchant	Main st	153	f m f
j	116	Saunders, C W	Gentleman	Main st	236, 237	f m f
	117	Saunders, Claud	Clerk	Main st	236, 237	o s m f
j	128	Sadleir, John	Laborer	Princess st	31	f m f
	134	Stanley, George A	Merchant	Princess st	38	f m f
j	185	Seeli, James	Laborer	Con 4	e pt 62	f m f
	115	Thoms, J S	Artist	Main st	n pt 7	f m f
j	139	Tracey, Thomas	Laborer	Alice st	23, 24	o s m f
j	199	Thurman, Green	Laborer	Beech st	188	f m f
j	188	Ward, M F	Flaxgrower	Con 4	3	f m f
j	187	Ward, John	Flaxgrower	Con 4	3	f m f
j	186	Ward, William	Flaxgrower	Con 4	3	f m f
j	119	Walden, Francis	Cheesemaker	Main st	240	t m f
j	193	Webb, Thomas	Gentleman	Beech st	pt 4	f m f



PART II.—Persons entitled to vote at Municipal Elections only.

Class.	No on Roll	NAME	Profession	Con. or St.	Lot or pt of Lot	Class.
	106	Atkinson, Miss E.		Main st	n pt 61	f
	161	Brownlee, Mrs		Alice st	178	f
	190	Bryant, Mrs		Con 5	w pt 3	f
	154	Catchcart, Mrs		Alice st	168	f
	137	Cole, Mrs		Princess st	210, 211	f
	119	Culbert, Mrs		Main st	240	f
	227	Davis, Mrs S		Con 4	219, 220	f
	128	Dorcey, Mrs		Con 4	222, 223, 224	f
	141	Dagg, Mrs John		Alice st	20	f
	136	Frank, Miss		Princess st	208, 209	f
	156	Gillis, Mrs		Market st	102	f
	94	Goodacre, Mrs		Main st	n pt 86	f
	138	Gillispie, Mrs		Richmond st	23	f
	72	Hall, Mrs		Main st	pt farm 4	f
	142	Harrigan, Mrs		Alice st	18, 19	f
	173	Kinnece Mrs		Market st	96, 98	f
	95	Lynham, Miss		Main st	e pt 86	f
	130	O'Mara Mrs		Princess st	33, 34	f
	129	O'Connor Mrs		Princess st	32	f
	191	McDougall, Mrs		Con 4	pt 2	f
	182	Sceli, Mrs		Alice st	179, 183	f
	86	Simpson, Mrs		Main st	e pt 92	f
	139	Tracey, Mrs		Alice st	23, 24	f

PART III.—Persons entitled to vote at Legislative Elections only.

Jurors	No on Roll	NAME.	Profession	Con. or St.	Lot or Pt of Lot.	Class.
	289	Atkinson, James	Cabinetmaker	Market st	98	m f
	194	Betts, George	Laborer	Maple st	pt 62	t m f
	195	Betts, Ellice	Carpenter	Maple st	pt 62	m f
	290	Cunningham, Alexander	Teacher	Princess st	210	m f
	179	Collins, Francis	Tailor	Market st	129	m f
	170	Cooper, Richard	Laborer	Market st	101	m f
	289	Fox, Ernest	Clerk	Main st	88	m f
	282	Hodgins, Albert	Laborer	Alice st	189	m f
	111	Halls, P T	Clerk	Main st	162	m f
	288	Jackson, John	Machinist	Alice st	174, 177	m f
	130	McKinnon, John	Laborer	Princess st	32	m f
	192	McDougald Thomas	Teacher	Con 4	pt 2	m f
	287	McRoberts, J W	Gentleman	Alice st	174, 177	m f
	285	O'Neil, Charles H	Laborer	Main st	pt 157, 158	m f
	167	Quigley, John	Cabinetmaker	Market st	162	m f
	286	Saddlier, Arthur	Laborer	Princess st	31	m f
	284	Wray, Joseph	Miller	Main st	pt 157, 158	m f
	283	Zwicker, George	Jeweler	Main st	88	m f

I, G. A. Stanley, Clerk of the Municipality of the Village of Lucan, in the County of Middlesex, do hereby certify that Parts One and Three (1 and 3) of the within Voters List for the year 1891 constitute a correct list of all persons appearing by the last revised Assessment Roll of the said Municipality to be entitled to vote at elections for members of the Legislative Assembly; and that Parts One and Two (1 and 2) constitute a correct list for the same year of all persons appearing by the said Roll to be entitled to vote at Municipal elections in the said Municipality. And I also certify that the aggregate number of names of persons on the said list who are qualified to serve as jurors is one hundred and ninety-three (193). And I hereby call upon all electors to examine the said list and if any omission or other errors are perceived therein to take immediate proceedings to have the said errors corrected according to law.

Dated at my office this 1st day of August, 1891.

The said list was first posted up in my office on the 22nd of August, 1891.

G. A. STANLEY, CLERK.

1891/10/10 110/110/110

Class.

n f

n f

n f

n f

m f

m f

m f

m f

m f

m f

m f

m f

m f

m f

m f

m f

m f

m f

can,

and

cor-

the

Leg-

cor-

en-

also

who

nd I

n or

the

891.

ERK.

3-25/100-200-300-7100000

