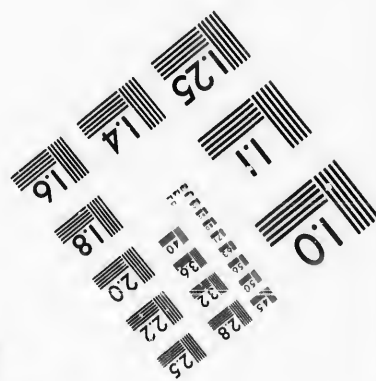
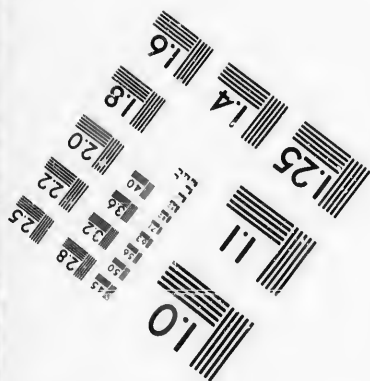
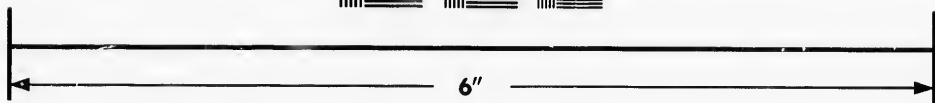
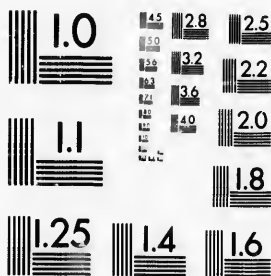


**IMAGE EVALUATION
TEST TARGET (MT-3)**



**Photographic
Sciences
Corporation**

23 WEST MAIN STREET
WEBSTER, N.Y. 14580
(716) 872-4503

**CIHM/ICMH
Microfiche
Series.**

**CIHM/ICMH
Collection de
microfiches.**



Canadian Institute for Historical Microreproductions / Institut canadien de microreproductions historiques

© 1987

Technical and Bibliographic Notes/Notes techniques et bibliographiques

The Institute has attempted to obtain the best original copy available for filming. Features of this copy which may be bibliographically unique, which may alter any of the images in the reproduction, or which may significantly change the usual method of filming, are checked below.

L'Institut a microfilmé le meilleur exemplaire qu'il lui a été possible de se procurer. Les détails de cet exemplaire qui sont peut-être uniques du point de vue bibliographique, qui peuvent modifier une image reproduite, ou qui peuvent exiger une modification dans la méthode normale de filmage sont indiqués ci-dessous.

- | | |
|------------------------------------------------------------------------------------------------------------------------------------------------------------------------------------------------------------------------------------------------------------------------------------------------------------------------------------------------|--------------------------------------------------------------------------------------------------------------------------------------------------------------------------------------------------------------------------------------------------------------------------------------------------------------------------------------------|
| <input checked="" type="checkbox"/> Coloured covers/
Couverture de couleur | <input type="checkbox"/> Coloured pages/
Pages de couleur |
| <input type="checkbox"/> Covers damaged/
Couverture endommagée | <input type="checkbox"/> Pages damaged/
Pages endommagées |
| <input type="checkbox"/> Covers restored and/or laminated/
Couverture restaurée et/ou pelliculée | <input type="checkbox"/> Pages restored and/or laminated/
Pages restaurées et/ou pelliculées |
| <input type="checkbox"/> Cover title missing/
Le titre de couverture manque | <input checked="" type="checkbox"/> Pages discoloured, stained or foxed/
Pages décolorées, tachetées ou piquées |
| <input type="checkbox"/> Coloured maps/
Cartes géographiques en couleur | <input type="checkbox"/> Pages detached/
Pages détachées |
| <input type="checkbox"/> Coloured ink (i.e. other than blue or black)/
Encre de couleur (i.e. autre que bleue ou noire) | <input checked="" type="checkbox"/> Showthrough/
Transparence |
| <input type="checkbox"/> Coloured plates and/or illustrations/
Planches et/ou illustrations en couleur | <input type="checkbox"/> Quality of print varies/
Qualité inégale de l'impression |
| <input checked="" type="checkbox"/> Bound with other material/
Relié avec d'autres documents | <input type="checkbox"/> Includes supplementary material/
Comprend du matériel supplémentaire |
| <input type="checkbox"/> Tight binding may cause shadows or distortion
along interior margin/
La reliure serrée peut causer de l'ombre ou de la
distorsion le long de la marge intérieure | <input type="checkbox"/> Only edition available/
Seule édition disponible |
| <input type="checkbox"/> Blank leaves added during restoration may
appear within the text. Whenever possible, these
have been omitted from filming/
Il se peut que certaines pages blanches ajoutées
lors d'une restauration apparaissent dans le texte,
mais, lorsque cela était possible, ces pages n'ont
pas été filmées. | <input type="checkbox"/> Pages wholly or partially obscured by errata
slips, tissues, etc., have been refilmed to
ensure the best possible image/
Les pages totalement ou partiellement
obscurcies par un feuillet d'errata, une pelure,
etc., ont été filmées à nouveau de façon à
obtenir la meilleure image possible. |
| <input type="checkbox"/> Additional comments:/
Commentaires supplémentaires: | |

This item is filmed at the reduction ratio checked below/
Ce document est filmé au taux de réduction indiqué ci-dessous.

10X	12X	14X	16X	18X	20X	22X	24X	26X	28X	30X	32X
					✓						

The copy filmed here has been reproduced thanks to the generosity of:

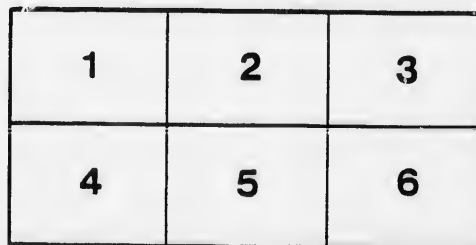
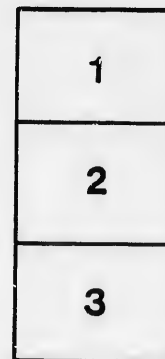
D.B. Weldon Library
University of Western Ontario
(Regional History Room)

The images appearing here are the best quality possible considering the condition and legibility of the original copy and in keeping with the filming contract specifications.

Original copies in printed paper covers are filmed beginning with the front cover and ending on the last page with a printed or illustrated impression, or the back cover when appropriate. All other original copies are filmed beginning on the first page with a printed or illustrated impression, and ending on the last page with a printed or illustrated impression.

The last recorded frame on each microfiche shall contain the symbol \rightarrow (meaning "CONTINUED"), or the symbol ∇ (meaning "END"), whichever applies.

Maps, plates, charts, etc., may be filmed at different reduction ratios. Those too large to be entirely included in one exposure are filmed beginning in the upper left corner, left to right and top to bottom, as many frames as required. The following diagrams illustrate the method:



L'exemplaire filmé fut reproduit grâce à la générosité de:

D.B. Weldon Library
University of Western Ontario
(Regional History Room)

Les images suivantes ont été reproduites avec le plus grand soin, compte tenu de la condition et de la netteté de l'exemplaire filmé, et en conformité avec les conditions du contrat de filmage.

Les exemplaires originaux dont la couverture en papier est imprimée sont filmés en commençant par le premier plat et en terminant soit par la dernière page qui comporte une empreinte d'impression ou d'illustration, soit par le second plat, selon le cas. Tous les autres exemplaires originaux sont filmés en commençant par la première page qui comporte une empreinte d'impression ou d'illustration et en terminant par la dernière page qui comporte une telle empreinte.

Un des symboles suivants apparaîtra sur la dernière image de chaque microfiche, selon le cas: le symbole \rightarrow signifie "A SUIVRE", le symbole ∇ signifie "FIN".

Les cartes, planches, tableaux, etc., peuvent être filmés à des taux de réduction différents. Lorsque le document est trop grand pour être reproduit en un seul cliché, il est filmé à partir de l'angle supérieur gauche, de gauche à droite, et de haut en bas, en prenant le nombre d'images nécessaire. Les diagrammes suivants illustrent la méthode.

No 16
1/2 c
James
List of Voters

Conty of the River

LIST OF VOTERS

21st 9th 97

FOR THE

TOWNSHIP OF LOBO

FOR THE

YEAR 1897.

STRATHROY :
EVANS BROTHERS.
1897.



ST OF VOTERS

◀ FOR THE ▶

TOWNSHIP OF LOBO

◀ FOR THE ▶

YEAR 1897.

STRATHROY :
EVANS BROTHERS.
1897.

SCHEDULE OF POST OFFICES.

- | | |
|------------------|----------------------|
| 1. Komoka. | 23. Alvinston. |
| 2. Sand Beach. | 24. Duncrief. |
| 3. London. | 25. Rodney. |
| 4. Lobo. | 26. Ailsa Craig. |
| 5. Mt. Brydges. | 27. Fernhill. |
| 6. London West. | 28. Delaware. |
| 7. Poplar Hill. | 29. Ilderton. |
| 8. Strathroy. | 30. Deso Soto. |
| 9. Chicago. | 31. Nairn. |
| 10. Hyde Park. | 32. Toronto. |
| 11. Granton. | 33. Arkona. |
| 12. Ferguson. | 34. Harvey College. |
| 13. Cleveland. | 35. Chatham. |
| 14. West Beech. | 36. Falkirk. |
| 15. Coldstream. | 37. Denfield. |
| 16. Forest. | 38. Telfer. |
| 17. Jerseyville. | 39. Eastwood. |
| 18. Minneapolis. | 40. Penetanguishene. |
| 19. Lucan. | 41. Byron. |
| 20. Vanneck. | 42. Lambeth. |
| 21. Ivan. | 43. St. Thomas. |
| 22. Amiens. | 44. Unknown. |
| | 45. Fredonia. |

M

Com

PAR

Jur. No.
R
J358

221

222

261

J319

287

J318

J336

367

J 48

J 49

VOTERS' LIST, 1897.
Municipality = of = Lobo.

Polling Sub-Division No. 1,

Comprising Lots 9 to the Townline between the Townships of Lobo and London,
 inclusive, in the 1st, 2nd, 3rd, 4th and 5th Concessions, and the
 South half of the aforesaid lots in the 6th Concession.

**PART I.—Persons Entitled to Vote at BOTH Municipal Elections and Elections
 to the Legislative Assembly.**

jur.	No. on Roll.	NAME.	LOT.	Concession or Street.	Other Description.	P.O.	Occupation
	J358	Alder, John	s w pt 13	4	M F and O	12	Farmer
	221	Alway, Geo C	n e pt 13	2	M F and O	12	Farmer
	222	Alway, Robt E	n e pt 13	2	M F and O	12	Farmer
	261	Alway, Reuben	pt 9	3	M F and O	1	Farmer
	J319	Bowman, George	s e qr 10	4	M F and O	4	Farmer
	287	Bowman, James	s e qr 10	4	M F and O	4	Farmer
	J318	Branton, Geo M	s w qr 10	4	M F and O	4	Farmer
	J336	Brown, Donald A	s hf 12 and o p	4	M F and O	4	Farmer
	367	Cameron, John J	pt e pt 15	4	M F and T	12	Laborer
J	48	Campbell, John S	pt s pt 10	1	M F and O	1	Farmer
J	49	Campbell, Wm	pt s pt 10	1	M F and T	1	Farmer

Polling Sub-Division No. 1.

Jur.	No. on Roll.	NAME.	LOT.	Concession or Street.	Other Description.	P.O.	Occupation
	50	Campbell, Wm R.	pt s pt 10	1	M F & F S.	1	Farmer
J401		Campbell, Duncan P.	n hf 10	5	M F and O.	4	Farmer
	415	Carmichael, Duncan	s w qr 13	5	M F and O.	4	Farmer
J273		Challoner, James H.	s e pt 11 and o p	3	M F and O.	1	Farmer
J369		Coghlan, Richard	w pt 15	4	M F and T.	12	Farmer
J421		Colvin, Alex	n hf 16 and o p	5	M F and O.	4	Farmer
J468		Colvin, Wm	s w pt 12 and o p	6	M F and O.	4	Farmer
J 66		Comfort, Wallace	pt s pt 12 and o p	1	M F and O.	12	Farmer
	356	Crapp, Thos	pt n hf 13	4	M F and T.	4	Farmer
	411	Dark, Matthew	s pt 12	5	M F and O.	4	Farmer
	461	Denton, William	s pt s hf 10	6	M F and O.	4	Laborer
J408		Dickie, John	s hf 11 and 10	5	M F and O.	4	Farmer
	35	Doan, Geo A	s pt 9	1	M F and O.	1	Farmer
	36	Doan, Israel C	s pt 9	1	M F and O.	1	Farmer
	40	Doan, Alex	pt n hf 9	1	M F and T.	1	Farmer
J196		Doan, Israel H	w pt s hf 10	2	M F and O.	1	Farmer
J197		Doan, Wm A	w pt s hf 10	2	M F and O.	1	Farmer
	340	Eddington, Wm A	Main 3,4,5, Lobo Vil & o p	4	M F, O & T.	4	Painter
	200	Edwards, Henry	n hf 10 and o p	2	M F and O.	1	Farmer
J201		Edwards, Fred J	n hf 10 and o p	2	M F and O.	1	Farmer
J202		Edwards, Jas G W	n hf 10 and o p	2	M F and O.	1	Farmer

Jur.	No. on Roll.
	277 F
J278	F
	265 F
J266	F
	271 F
J361	F
	481 F
	482 F
	483 F
	54 F
J 55	F
J 56	F
	360 F
J288	F
	290 F
J291	F
J224	F
	225 F
	226 F
J285	F
J279	G

Polling Sub-Division No. 1.

P.O. Occupation	No. on Roll	NAME.	LOT.	Concession or Street.	Other Description.	P.O. Occupation
1..Farmer	277	Edwards, Rich M.	s pt 12 and o p	3	M F and O.	4..Farmer
4 .Farmer	J278	Edwards, Chas C.	pt n hf 12 and o p	2	M F and O.	4..Farmer
4..Farmer	265	Edwards, Jeremiah.	s pt 10 and o p	3	M F & J O.	1..Farmer
1..Farmer	J266	Edwards, Geo F.	e pt 9 and o p	3	M F & J O.	1..Farmer
2..Farmer	271	Edwards, Arthur E.	n w qr 11	3	M F and T.	4..Farmer
4..Farmer	J361	Edwards, Albert F.	s e pt 14	4	M F and O.	12..Farmer
4 .Farmer	481	Ferguson, Duncan.	s w qr 17 and o p	6	M F and O.	4..Farmer
12..Farmer	482	Ferguson, Arch	s w qr 17 and o p	6	M F & F S.	4..Farmer
4..Farmer	483	Ferguson, John	s w qr 17 and o p	6	M F & F S.	4..Farmer
4..Farmer	54	Ferguson, Robt	n pts 9 and 10	1	M F and O.	1..Farmer
4..Laborer	J 55	Ferguson, Daniel.	n pts 9 and 10 and o p	1	M F,T & O.	1..Farmer
4..Farmer	J 56	Ferguson, James.	n pts 9 and 10 and o p	1	M F,T & O.	1..Farmer
1..Farmer	360	Ferguson, Robert.	n pt 14 and o p	3	M F and O.	12..Farmer
1..Farmer	J288	Ferguson, John	n pt 14 and o p	3	M F and O.	12..Farmer
1..Farmer	290	Ferguson, Andrew.	gore 15 and o p	3	M F and O.	12..Farmer
1..Farmer	J291	Ferguson, Chas H.	gore 15 and o p	3	M F & J O.	12..Farmer
1..Farmer	J224	Fonger, John.	s pt 13.	2	M F and O.	12..Farmer
4..Painter	225	Fonger, Angus	s pt 13.	2	M F & F S.	12..Farmer
1..Farmer	226	Fonger, Nelson	s pt 13	2	M F & F S.	12..Farmer
1..Farmer	J285	Freed, Rev Wm.	n cor s hf 12.	3	M F and T.	4 .Minister
1. Farmer	J279	Graham, Alexander.	s w qr 13 and o p	3	M F and O.	4..Farmer

Polling Sub-Division No. 1.

Jur.	No. on Roll.	NAME.	LOT.	Concession or Street.	Other Description.	P.O.	Occupation
J282		Graham, George	s e qr 13	3	M F and O	12	Farmer
J341		Graham, Peter L	e Main 8 & 9, Lobo Vil & o p	4	M F and O	4	M D
402		Graham, Neil	n pt 11	5	M F & J O	4	Farmer
J403		Graham, Allen D	n pt 11	5	M F & J O	4	Farmer
J359		Grant, Alex	n pt 14	4	M F and O	4	Farmer
404		Gray, Angus	n e qr 9 and o p	5	M F and O	4	Farmer
405		Gray, Alex C	n e qr 9 and o p	5	M F & F S	34	Student
346		Harris, William	pt 13	4	M F and O	4	Laborer
347		Harris, Russell	pt 13	4	M F and O	4	Laborer
62		Harrison, Thos	n w cor 12	1	M F and T	1	Laborer
J205		Harrison, Geo H	s e qr 11 and o p	2	M F & J O	12	Farmer
J206		Harrison, Franklin	s e qr 11 and o p	2	M F & J O	12	Farmer
J 69		Harrison, John W	s e qr 11 and o p	2	M F & J O	12	Farmer
J207		Harrison, James	s e qr 11 and o p	2	M F & J O	12	Farmer
J208		Harrison, Chas M	gore 14 and o p	2	M F & J O	12	Farmer
209		Harrison, Benj L	s w qr 12 and o p	2	M F and O	12	Farmer
J210		Harrison, Benj J	s w qr 12 and o p	2	M F & J O	12	Farmer
J211		Harrison, Alfred G	s w qr 12 and o p	2	M F & J O	12	Farmer
J212		Harrison, Godfrey	s w qr 12 and o p	2	M F & J O	12	Farmer
354		Hodgson, Thomas	pt n hf 13	4	M F and O	4	Gentleman
J276		Holland, John	n pt s hf 12	3	M F and O	4	Mason

Jur.	No. on Roll
J410	I
412	I
295	J
J214	J
398	J
J217	J
219	K
284	K
J 58	L
213	M
J348	M
469	M
J470	M
J223	M
J342	M
J418	M
J419	M
J475	M
J476	M

Polling Sub-Division No. 1.

Par.	No. on Roll.	NAME.	LOT.	Concession or Street.	Other Description.	P.O.	Occupation
12.		Irvine, John	s w pt 12	5	M F and O..	4.	Carpenter
4.		Irvine, Joshua	n pt 12	5	M F and O..	4.	Farmer
4.		Jary, John R	pt 14	3	M F and T.	12.	Farmer
4.		Johnson, Colin	n e pt 12	2	M F and O..	21.	S Teacher
4.		Johnson, John	s w qr 9 and o p	5	M F and O..	4.	Farmer
4.		Jury, Amos H	s e qr 12 and o p	2	M F & J O.	12.	Farmer
34.		Keirstead, Wm F	s w pt n hf 13	2	M F and O..	4.	Farmer
4.		Knight, Andrew J	s pt 14	3	M F & F S.	12.	Farmer
4.		Ling, Edwin	n pt 11 and o p	1	M F and O..	12.	Farmer
1.		Mitchell, John H	pt 13	4	M F and O..	12.	Farmer
12.		Monger, Geo H	pt 12 and 13	4	M F and O..	4.	H Keeper
12.		Moore, Joseph	s e pt 12	6	M F and O..	4.	Farmer
12.		Moore, George	s e pt 12	6	M F and O..	4.	Farmer
12.		Morris, John K	n pt s hf 13	2	M F and O..	10.	Farmer
12.		Murch, Geo	e Main st. 4,5,6 & 7, L Vil & o p	4	M F and O..	4.	Bl'ksmith
12.		McArthur, Jas A	n hf 14	5	M F and O..	4.	Farmer
12.		McArthur, John H	n hf 14	5	M F and O..	4.	Farmer
12.		McArthur, Colin	s w pt 14 and o p	6	M F and O..	4.	Farmer
4.		McArthur, Alex	s w pt 14	6	M F and O..	4.	Farmer

Polling Sub-Division No. 1.

Jur.	No. on Roll.	NAME.	LOT.	Concession or Street.	Other Description.	P.O.	Occupation
J	57	McArthur, Dougal.	s e pt 14 and o p	6	M F and O.	4.	Farmer
	479	McCall, Duncan.	s hf 16 and o p	6	M F and O.	4.	Farmer
	459	McCull, Wm	s hf 9	6	M F & J O.	4.	Farmer
J	469	McCull, Archibald.	s hf 9	6	M F & J O.	4.	Farmer
J	416	McGugan, Archib'd.	s hf 14 and o p	5	M F and O.	4.	Farmer
J	417	McGugan, Arch C.	s e qr 13 and o p	5	M F and O.	4.	Farmer
	170	McIntyre, Hugh	n hf 10 and o p	3	M F and O.	4.	Farmer
	268	McIntyre, David A.	n pt s hf 10 and o p	3	M F & F S.	4.	Farmer
J	317	McIntyre, Hugh jr.	s e qr 9	4	M F and O.	4.	Farmer
J	314	McIntyre, Jas C.	n w qr 9	4	M F and O.	4.	Farmer
J	678	McIntyre, Nichol.	s e pt 14	4	M F and O.	12.	Laborer
J	413	McIntyre, Dunc N.	n hf 13 and o p	5	M F & J O.	4.	Farmer
J	414	McIntyre, Alex A.	n hf 13 and o p	5	M F & J O.	4.	Farmer
	422	McIvor, Hugh	gore 17	5	M F and O.	20.	Farmer
J	423	McIvor, Wm C	gore 17	5	M F and O.	20.	Farmer
J	199	McKellar, Geo W.	s pt 10	2	M F and O.	1.	Farmer
J	406	McKellar, Archibald.	s cor n hf 11 and o p	5	M F and O.	4.	Farmer
	466	McKellar, Alex	s pt 11 and o p	6	M F and O.	4.	Farmer
J	467	McKellar, Peter G.	s pt 11 and s e pt 17	6	M F and O.	4.	Farmer
	420	McNeil, Alex	s w qr 15	5	M F and O.	4.	Farmer
	47	Nellis, Frank L	pt 9 and 10	1	M F and O.	1.	Farmer
	349	Norton, Nathan	pt n hf 13 and o p	4	M F and T.	4.	Hotel K'r

Jur. No. on Roll.
60 O
65 O
J 37 P
J 38 P
J338 P
337 P
J 68 P
J260 Q
J424 R
363 S
364 S
365 S
J339 S
262 S
J263 S
289 S
J315 S
316 S
321 S
J322 S

P.O. Occupation	Jud. No. on Roll.	NAME.	LOT.	Concession or Street.	Other Description.	P.O.	Occupation.
4..Farmer		60 Oliver, Wm s w pt 11	1	M F and O		1..Miller	
4..Farmer		65 Oliver, John M . . pt e pt 12	1	M F and O..		1..Farmer	
4..Farmer	J	37 Pew, Edwin pt s pt 9, 10	1	M F and O..		1..Farmer	
4..Farmer	J	38 Pew, George pt s pt 9, 10	1	M F and O..		1..Farmer	
4..Farmer	J338	Powell, Thos R . . n pt 12	4	M F and O..		4..Wag Mak	
4..Farmer		337 Powell, Thos pt n pt 12	4	M F and O..		4..Gentleman	
4..Farmer	J	68 Pulham, Francis H . . s pt gore 13 and o p	1	M F and O..		1..Farmer	
4..Farmer	J260	Quarrie, Frederick . . s w qr 9	3	M F and O..		1..Farmer	
4..Farmer	J424	Robson, Reginal . . s hf 16	5	M F and O..		4..Farmer	
12..Laborer		363 Scott, Arthur w pt 15	4	M F and T..		12..Farmer	
4..Farmer		364 Scott, Andrew H . . w pt 15	4	M F & F S..		12..Farmer	
20..Farmer		365 Scott, Wm B w pt 15	4	M F & F S..		12..Farmer	
20..Farmer	J339	Sharp, Richard . . pt 12	4	M F and O..		4..Merchant	
1..Farmer		262 Smith, Henry n hf 9	3	M F and O..		4..Farmer	
4..Farmer	J263	Smith, Thos H . . n hf 9	3	M F and T..		4..Farmer	
4..Farmer		289 Smith, Jacob e pt 14	8	M F and T..		12..Gentleman	
4..Farmer	J315	Stalwood, Chas . . pt 9 and o p	4	M F and O..		4..Farmer	
4..Farmer		316 Stalwood, Chas jr . . pt 9 and o p	4	M F & F S..		4..Farmer	
1..Farmer		321 Staples, Geo n hf 10	4	M F & J T..		4..Farmer	
4..Hotel K'r	J322	Staples, Fred n hf 10	4	M F & J T..		4..Farmer	

Polling Sub-Division No. 1.

Jur.	No. on Roll.	NAME.	LOT.	Concession or Street.	Other Description.	P.O.	Occupation
	345	Staples, John R.	Lobo Vil 6	4	M F and O.	4.	Laborer
	44	Steels, Wm.	pt n pt 9	1	M F and O.	1.	Farmer
	45	Steels, Walter	pt n pt 9	1	M F and O.	1.	Farmer
	323	Steel, Daniel	n hf 11 and o p	4	M F and O.	4.	Farmer
J	326	Steei, Daniel A	n hf 11 and o p	4	M F and O.	4.	Farmer
J	327	Steeles, Herbert R	n hf 11 and o p	4	M F and O.	4.	Farmer
	328	Steele, Wellington L	n hf 11 and o p	4	M F & F S.	4.	Farmer
J	51	Sulston, Wm	pt s pt 10	1	M F and O.	1.	Farmer
	52	Sulston, Thomas	pt s pt 10	1	M F & F S.	1.	Farmer
	53	Sulston, Percival	pt s pt 10	1	M F & F S.	1.	Farmer
	343	Taylor, James	Lobo Vil 1 and 2	4	M F and O.	4.	Laborer
	269	Thody, William	pt 11	2 & 3	M F and T.	1.	Farmer
J	329	Tuckey, Wm	s w pt 14 and o p	4	M F and O.	4.	Farmer
J	330	Tuckey, Gearuder E	s w pt 14 and o p	4	M F and T.	4.	Farmer
J	331	Tuckey, James A	s w pt 14 and o p	4	M F and T.	4.	Farmer
J	332	Tuckey, Walter	s w pt 14 and o p	4	M F and T.	4.	Farmer
	220	Walburg, John	n w pt 13	2	M F and O.	12.	Farmer
J	67	Wilkie, George	pt cen pt 12	1	M F and O.	4.	Farmer

PART II.—Persons Entitled to Vote at Municipal Elections ONLY.

357 Alder, Thomas . . . s w pt 13 4 Owner 12 Farmer

Polling Sub-Division No. 1.

P.O. Occupation
 4.. Laborer
 1.. Farmer
 1.. Farmer
 4.. Farmer
 4.. Farmer
 4.. Farmer
 4.. Farmer
 1.. Farmer
 1.. Farmer
 1.. Farmer
 4.. Laborer
 1.. Farmer
 4.. Farmer
 4.. Farmer
 4.. Farmer
 4.. Farmer
 12.. Farmer
 4.. Farmer
 ONLY.
 12.. Farmer

Jur.	No. on Roll.	NAME.	LOT.	Concession or Street.	Other Description.	P.O.	Occupation
	366	Arrand, Robert	gore 16 and o p	4	Owner	12	Farmer
	362	Boston, Robert	e pt 15	4	Owner	3	Jail Gov'or
	333	Cohoe, Elizabeth A.	s hf 11	4	Joint O	6	Widow
	334	Cohoe, Benj L.	s hf 11	4	Joint O	17	Minister
	335	Cohoe, Josiah J.	s hf 11	4	Joint O	44	Farmer
	59	Comfort, Jessie	pt s pt 10	1	Owner	1	Widow
	270	Edwards, Rich W.	n w qr 11	3	Owner	14	Farmer
	61	Fletcher, Wm.	s e cor 9 and o p	2	Owner	3	Janitor
	203	Hambly, Sarah A.	n hf 11 and o p	2	Owner	1	Widow
	41	Haywood, Thos.	pt n pt 9	1	Owner	41	Mason
	294	Jary, Mary A.	pt 14	3	Owner	12	Widow
	399	Johnson, Sarah	n w and s e qr 9	5	Owner	4	Spinster
	216	Jury, Elizabeth	s e qr 12	2	Owner	18	Widow
	283	Knight, Jane	s pt 14	3	Owner	12	Widow
	484	McColl, Jennet	n e qr 15	5	Owner	4	Spinster
	353	McBain, Christy	pt 13	4	Owner	4	Spinster
	352	McBain, Annie	pt 13	4	Owner	4	Spinster

Polling Sub-Division No. 1.

Jur. No. on Roll.	NAME.	LOT.	Concession or Street.	Other Description.	P.O.	Occupation
281	McIntyre, Jessie . . n e qr 13	3	Owner	4..Widow
344	McIntyre, Nancy . . Nairn road,3,4,5,Lobo Vil.	4	Owner	4..Spinster
448	McKellar, Sarah J. . . pt s hf 10	6	Owner	4..Widow
64	Shepherd, Sarah . . s w pt 12	1	Owner	1..Spinster
63	Shepherd, Mary . . s w pt 12	1	Owner	1..Widow
39	Slade, George pt n pt 9	1	Owner	3..Mason
43	Steel, Sarah pt n pt 9	1	Owner	1..Widow
324	Steeles, John W. . . pt n hf 12 and o p	4	Owner	4..Farmer
325	Steeles, Albert E. . . pt s hf 13 and o p	4	Owner	4..Farmer
320	Tambling, Thomas . . n hf 10	4	Owner	3..Builder
368	Waugh, Jennie . . w pt 5	4	Owner	20..Widow

PART III.—Persons Entitled to Vote at Elections to the Legislative Assembly ONLY.

275	Beach, James n w qr 13	3	M F	1..Laborer
397	Blackstock, Benj. . . w hf 9	5	M F	4..Laborer
274	Campbell, William. s w pt 12	3	M F	1..Laborer
264	Edwards, John . . n hf 9	3	M F	4..Laborer

Polling Sub-Division No. 1.

P.O. Occupation	Juni	No. on Roll.	NAME.	LOT.	Concession or Street.	Other Description.	P.O. Occupation
4..Widow		286	Freed, James n cor s hf 12	12	3	M F	4.. Laborer
4..Spinster							
4..Widow		292	Graham, Milfred	gore 15	3	M F	12.. Laborer
1..Spinster		198	Harrison, Francis	s w qr 11	2	M F and H	1.. Farmer
1..Widow		400	Kigen, John	s w qr 9	5	M F	4.. Laborer
3..Mason							
1..Widow		204	Lindsay, David	11	2	M F	1.. Laborer
4..Farmer		425	Long, David	s hf 16	5	M F	4.. Laborer
4..Farmer		215	Mitchell, Arthur	hf 11	5	M F	12.. Laborer
3..Builder		218	Murray, James	n hf 12	2	M F and H	12.. Laborer
20..Widow		409	McPherson, Peter	s hf 11	5	M F	4.. Laborer
gislative		272	Pfanner, John	cen pt 11	3	M F and H	4.. Butcher
		355	Quinnie, Frank	13	4	M F and H	4.. Farmer
1..Laborer		293	Seeds, William	gore 15	3	M F and H	12 Laborer
4..Laborer		350	Smith, Geo P	13	4	M F	4.. School T
1..Laborer		351	Smith, Wm B	pt n hf 12	4	M F	4.. Laborer
4..Laborer		267	Wellsman, Henry	s pt 9	3	M F	1.. Laborer
		407	Wilson, John	10	5	M F and H	4.. Laborer

Polling Sub-Division No. 2,

Comprising Lots Nos. 1 to 8, inclusive, in the 1st, 2nd, 3rd, 4th and 5th
Concessions.

PART I.—Persons Entitled to Vote at BOTH Municipal Elections and Elections to the Legislative Assembly.

Jur. No. on Roll.	NAME.	LOT.	Concession or Street.	Other Description.	P.O.	Occupation
373	Alway, Frederick . . .	pt 1 and 2	5	M F & F S . . .	1 . .	Farmer
J 76	Barber, William . . .	pt s pt 2	2	M F and O . . .	1 . .	Farmer
J 79	Barber, John	pt 2 and 3	2	M F and T . . .	1 . .	Farmer
J 80	Barber, Albert . . .	pt n hf 3	2	M F and O . . .	1 . .	Farmer
18	Blanchard, John . . .	s pt 3 and o p	1	M F and O . . .	1 . .	Farmer
J 20	Blanchard, George . . .	s pt 3 and 4	1	M F and O . . .	1 . .	Farmer
J252	Brayford, Wm	n w qr 7 and n e pt 6	3	M F and O . . .	1 . .	Farmer
146	Brown, Thomas . . .	Kom S S bk N, 8	2	M F and O . . .	1 . .	Laborer
J389	Brown, James	n hf 5	5	M F and O . . .	1 . .	Farmer
147	Brown, James	Kom S S bk N, 8	2	M F and O . . .	1 . .	Laborer
J378	Campbell, Donald M . . .	n hf 3	5	M F & J O . . .	7 . .	Farmer
J379	Campbell, Arch L . . .	n hf 3	5	M F & J O . . .	7 . .	Farmer
J381	Campbell, Dougald L . . .	n hf 3	5	M F & J O . . .	1 . .	Farmer!
J382	Campbell, John L . . .	n hf 3	5	M F & J O . . .	7 . .	Farmer

Polling Sub-Division No. 2.

Jur. No. on Roll.	NAME.	LOT.	Concession or Street.	Other Description.	P.O.	Occupation
J383	Campbell, Duncan D.	hf 3 and o p	5	M F and O.	1.	Farmer
J384	Campbell, Ezra	hf 3	5	M F and O.	1.	Farmer
J194	Campbell, Arch	hf 3 and o p	2	M F and O.	1.	Farmer
J195	Campbell, Alfred J.	hf 8 and o p	2	M F and O.	1.	Farmer
J301	Campbell, Donald	pt 2	4	M F and O.	1.	Farmer
111	Clendening, Wm.	Well 7 and o p	2	M F and T.	1.	Merch'nt
227	Craven, George	hf 1	3	M F and O.	1.	Farmer
228	Craven, John A.	hf 1	3	M F & F S.	1.	Farmer
229	Craven, Geo F	hf 1	3	M F & F S.	1.	Farmer
165	Finch, Wm C.	Kom bk H, 5 and o p	2	M F and O.	1.	Gentleman
J385	Fletcher, Neil	hf 4 and o p	5	M F and O.	1.	Farmer
123	Foster, Fuller C.	bk R, 1,2,3,4,5, Kom S S.	2	M F and O.	1.	Laborer
J235	Frank, John B C.	pt 3	3	M F and O.	1.	Farmer
J236	Frank, Richard C.	pt s hf 3	3	M F and O.	1.	Farmer
J237	Frank, Wm S.	pt s hf 3	3	M F and O.	1.	Farmer
89	Graham, Matthew	pt s pt 4	2	M F and O.	1.	Farmer
J 90	Graham, John	pt s pt 4	2	M F and O.	1.	Farmer
J302	Graham, Dougald W.	3 and o p	4	M F and O.	1.	Farmer
306	Graham, Duncan	hf 5	4	M F & J O.	1.	Farmer
J307	Graham, Donald F.	hf 5	4	M F & J O.	1.	Farmer
J308	Graham, Alex F.	hf 6	4	M F and O.	1.	Farmer

Jur.	No. on Roll.	NAMK.	LOT.	Concession or Street.	Other Description.	P.O.	Occupation	Jur.	No. on Roll.
	311	Graham, Alexander.	n e qr 8 and o p	3	M F and O.	4.	Farmer	J	176
J	309	Graham, Alex A.	s pt 7	4	M F and O.	1.	Farmer		177
J	310	Graham, John	n w qr 7	4	M F and O.	4.	Farmer		178
J	305	Gray, Malcolm	n hf 5	4	M F and O.	1.	Farmer		179
J	244	Henderson, Edward	n hf 5 and o p	3	M F and O.	1.	Farmer	J	120
J	231	Hicks, Harry	2	3	M F and T.	1.	Farmer		121
	232	Hicks, Joseph	2	3	M F and T.	1.	Farmer		148
J	233	Hicks, Joseph jr.	2	3	M F and T.	1.	Farmer	J	149
	137	Hord, Edmund J.	bk L, 5, 6, 7, and o p	2	M F and O.	1.	Bag Man		240
	138	Hord, Robt F.	bk L, 5, 6, 7, and o p	2	M F and O.	1.	Laborer	J	376
	139	Hord, Albert	bk L, 5, 6, 7, and o p	2	M F and O.	1.	Laborer	J	131
J	6	Janes, John B.	pt 2 and 3	1	M F and O.	1.	Farmer		11
J	396	Johnson, Thomas.	w hf 8	5	M F and O.	4.	Farmer		12
J	374	Keir, James	s e pt 2	5	M F and O.	1.	Farmer	J	30
	375	Keir, Dougald	s e pt 2	5	M F & F S.	1.	Farmer		104
	370	Lamont, John	n hf 1 and o p	5	M F & J O.	1.	Farmer		105
J	371	Lamont, John C.	hf 1 and o p	4	M F and O.	1.	Farmer	J	304
	128	Lofthouse, Geo	Well 12	2	M F and O.	1.	Shoema'er		96
	115	Lince, James	Well 53 and o p	2	M F and O.	1.	Gentlem'n	J	242
J	119	Luce, David	Kom bk S, 1 and 2	2	M F and O.	1.	Carpenter	J	243

Polling Sub-Division No. 2.

Jul.	No. on Roll.	NAME.	LOT.	Concession or Street.	Other Description.	P.O.	Occupation.
	176	Luce, Joseph D.	bks 7 and 2, all	2	M F and O.	1.	Laborer
	177	Luce, Walter S.	blks 7 and 2, all	2	M F and T.	1.	Laborer
	178	Luce, John H.	blks 7 and 2, all	2	M F and T.	1.	Laborer
	179	Luce, Charles H.	blks 7 and 2, all	2	M F and T.	1.	Laborer
	J120	Mathison, David	blk S, w hf 3 and o p	2	M F and O.	1.	Laborer
	121	Mathison, James	blk S, w hf 3	2	M F and T.	1.	Laborer
	148	Morrison, Angus P.	Kom SS, bk O, 7 and o p.	2	M F and O.	1.	Laborer
	J149	Morrison, Neil	Kom SS, bk C, all but 7 & 3.	2	M F and T.	1.	Laborer
	240	McArthur, Dougal	n hf 3	3	M F and O.	1.	Farmer
	J376	McBain, Peter L.	pt s w qr 2 and o p	5	M F & J O.	1.	Farmer
	J131	McCaffery, James	Kom bk L 2, 3, 4	2	M F and T.	1.	Hotel K'r
		11 McDonald, Ewen	pt 2 and 3	1	M F and O.	1.	Farmer
		12 McDonald, Kenneth	pt 2 and 3	1	M F and O.	1.	Farmer
	J 30	McDougald, James	n pt 5 and 6	1	M F and O.	1.	Farmer
	104	McDougall, Alex.	Well 25 and 26	2	M F and O.	1.	Laborer
	105	McDougall, David A.	Well 49, 50 and o p	2	M F and O.	1.	Laborer
	106	McDougall, Thos J.	e hf 4 and o p	2	M F and O.	1.	Laborer
	J304	McDougall, Malcolm	s hf 4 and o p	4	M F and O.	1.	Farmer
		96 McIntyre, Donald	{ Kom SS, bk R, 6,7,8,9 } and other prem	2	M F and O.	4.	Laborer
	J242	McIntyre, Peter A.	n hf 4 and o p	3	M F and O.	1.	Farmer
	J243	McIntyre, Peter Alex.	n hf 4 and o p	3	M F and O.	1.	Farmer

Jul. No. on Roll.	NAME.	LOT.	Concession or Street.	Other Description.	P.O.	Occupation
J245	McIntyre, Alex.	n pt s pt 5	3	M F and O	1	Farmer
J112	McKellar, John A.	s w pt 9 and o p	2	M F and O	1	Laborer
132	McKellar, Peter	Kom S S, bk L, 2 and 18	2	M F and O	1	Laborer
133	McKellar, Malcolm A.	Kom S S, bk L, 2 & 18	2	M F and O	1	Wag mak
J390	McKinley, John	w hf 7 and o p	5	M F and O	1	Farmer
J391	McKinley, Colin	pt n hf 7 and o p	5	M F and O	1	Farmer
J393	McLachlan, Donald	e hf 7 and o p	5	M F & J O	1	Farmer
J394	McLachlan, John A.	e hf 7 and o p	5	M F & J O	1	Farmer
J395	McLachlan, Arch J.	e hf 7 and o p	5	M F & J O	1	Farmer
183	McLellan, Arch D.	pt s hf 6 and o p	2	M F and O	1	Farmer
143	McMurphy, John	bk K, 10, 11, 12, and o p	2	M F and T	1	Laborer
J299	McMurphy, Duncan	pt 1 and 2	4	M F and T	1	Farmer
J300	McMurphy, Dougald	pt 1 and 2	4	M F and T	1	Farmer
182	Nash, John	Kom S S, bk 15, lots 9, 10	2	M F and O	1	Laborer
74	Noxel, William	n e qr 1	2	M F and O	1	Farmer
75	Noxel, George	n e qr 1	2	M F and O	1	Farmer
J 31	Parsons, Walter	.7	1	M F and O	1	Farmer
33	Parsons, David C.	.7	1	M F & F S	1	Farmer
J 32	Parsons, Wm G.	.7	1	M F and O	1	Farmer
J 34	Parsons, Kilbert	.8	1	M F and O	1	Farmer
118	Payne, William	pt e pt 4	2	M F and T	1	Laborer

Polling Sub-Division No. 2.

P.O. Occupa-
tion
1..Farmer
1..Laborer
1..Laborer
1..Wag mak
1..Farmer
1..Farmer
1..Farmer
1..Farmer
1..Farmer
1..Laborer
1..Farmer
1..Farmer
1..Laborer
1..Farmer
1..Farmer
1..Farmer
1..Farmer
1..Farmer
1..Farmer
1..Laborer

Jur.	No. on Roll.	NAME.	LOT.	Concession or Street.	Other Description.	P.O.	Occupation
	122	Pender, Lawrence..	Kom SS, bk S, 3, 4, 5, 6 & o p	2	M F and O	1	Laborer
J	84	Pfanner, James ..	s 3 cor 4	2	M F and T	1	H Keeper
	247	Pinyon, Thomas..	Kom D S, 4, 5, 6 & o p	3	M F and O	1	Farmer
J	239	Revell, Isaac	s hf 4	3	M F and T	1	Farmer
	81	Robinson, David ..	n w pt 4 and o p	2	M F and O	1	Gentleman
J	189	Robinson, Robt ..	n e pt 6 and o p	2	M F and O	1	Farmer
J	102	Robinson, Wm ..	s pt n hf 7 and o p	2	M F and O	1	Farmer
J	255	Robinson, Frank..	s w pt 7 and o p	3	M F and O	1	Farmer
	101	Rowland, Lewis..	Well, w hf 29	2	M F and O	1	Br'ge Bldr
J	5	Ryan, William ..	cen pt 2 and 3	1	M F and O	1	Miller
	82	Scott, William ..	n cor 4	2	M F and T	1	Laborer
	161	Scoynes, John....	Well K, 4, 7 and o p	2	M F and O	1	Laborer
	27	Seabrook, Arthur ..	s pt 5 and 6 and o p	1	M F and O	1	Farmer
J	28	Seabrook, Percy B..	s pt 5 and 6 and o p	1	M F and O	1	Farmer
J	29	Seabrook, Edwin R..	s pt 5 and 6	1	M F and O	1	Farmer
J	2	Seldin, W J.....	n w pt 1	1	M F and T	1	Farmer
J	134	Shiple, John....	n pt s hf 6 and o p	2	M F and O	1	H Keeper
J	185	Shiple, Wm B ..	pt s hf 6 and o p	2	M F and O	1	H Keeper
J	91	Sinclair, John....	Well 16, 31, 32 and o p	2	M F and O	1	Bl'ksmith
	141	Sleath, James....	bk M, lot 2	2	M F and O	1	Wag Mak
	254	Small, Robt A ..	e pt 7	3	M F and O	1	Farmer

Polling Sub-Division No. 2.

Jur.	No. on Roll.	NAME.	LOT.	Concession or Street.	Other Description.	P.O.	Occupation
J	13	Smith, Agnes	e pt 3	1	M F and O	1	Farmer
"	14	Smith, David S	n pt 4	1	M F and O	1	Farmer
J	77	Smith, David N	s hf 3	2	M F and O	1	Farmer
J	15	Smith, Leonard R	n pt 4	1	M F and O	1	Farmer
J	16	Smith, Jas H	s w cor 4 and o p	2	M F and O	1	Farmer
J	129	Smith, Archibald B	Kom SS, bk M, 3,4 & o p	2	M F and O	1	Blacks'ith
	130	Smith, Archibald E	Kom SS, bk M, 3,4 & o p	2	M F and O	1	Blacks'ith
J	186	Smith, Allan M	s pt 6	2	M F and O	1	Farmer
	25	Spettigue, Wm	s e cor 4	1	M F and T	28	Cheese M
	26	Spettigue, Chas	s e cor 4	1	M F and T	28	Cheese M
	85	Spence, Smith	s pt 4	2	M F and O	1	Blacks'ith
	86	Spence, James	s pt 4	2	M F and O	1	Blacks'ith
	87	Spence, Thos	s pt 4	2	M F and T	1	Plasterer
	88	Spence, Albert	s pt s pt 4	2	M F and T	1	Laborer
J	297	Stanley, Thomas	n w qr 1	4	M F and T	1	Farmer
	249	Steel, George	Kom D S, 1,2,3,109,110,111	2	M F and O	1	Laborer
	250	Steel, Alex A	Kom D S, 1,2,3,109,110,111	2	M F and O	1	Laborer
	167	Stilson, Leonard	Kom SS, bk A, 9 to 16, incl'v	2	M F and O	1	Laborer
J	312	Stonehouse, Egerton R	n hf 8 and o p	4	M F and O	4	Farmer
J	313	Stonehouse, Wesley E	n hf 8 and o p	4	M F, O & T	4	Farmer
J	92	Sutherland, George	Kom SS, bk R, 6,7,8 & o p	2	M F & J T	1	Farmer
J	94	Sutherland, Neil	Kom SS, bk R, 6,7,8 & o p	2	M F & J T	1	Farmer

J 93 Su
135 Su
168 Sw
392 Tu
191 Tu
192 Tu
193 Tu
152 W
257 W
258 W
259 W
172 W
171 W
173 W
3 W
4 W
4½ W
348 W
23 Ac

Polling Sub-Division No. 2.

P.O. Occupation	Jur. No. on Roll.	NAME.	LOT.	Concession or Street.	Other Description.	P.O. Occupation
1..Farmer	J 93	Sutherland, Henry..	Kom SS, bk R,6,7,8 & o p.	2..	M F & J T..	1..Farmer
1..Farmer		135 Sutherland, James..	Kom SS, bk N and o p.	2	M F and O..	1..Laborer
1..Farmer		168 Swales, John	bk A, 9 to 16	2	M F and T..	1..Laborer
1..Farmer		✓				
1. Farmer	J 392	Tuckey, Chas.....	s hf 6	5	M F and O..	4..Farmer
1..Blacks'ith		191 Turnbull, Thos T..	s pt 7, 8	2	M F & J O..	1..Farmer
1..Blacks'ith	J 192	Turnbull, John..	s pt 7, 8	2	M F & J O..	1..Farmer
1..Farmer	J 193	Turnbull, Robt B..	s pt 7, 8	2	M F & J O..	1..Farmer
28..Cheese M		152 Watson, William..	Kom S S, bk K, 13	2	M F and O..	1..Laborer
28..Cheese M	J 257	Waugh, Edward..	s e qr 8 and o p	3	M F and O..	1..Farmer
1..Blacks'ith	J 258	Waugh, Chris.....	s e qr 8 and o p	3	M F and T..	1..Farmer
1..Blacks'ith	J 259	Waugh, Wn: R..	n hf 9 and o p	2	M F and T..	1..Farmer
1..Plasterer		172 Wernham, Jos jr..	Kom bk F, 1, 2, 3, & o p.	1.	M F and O..	1..Laborer
1..Laborer		171 Wernham, Chas.	Kom SS, bk H, 6,7,8, & o p.	2	M F and O..	1..Laborer
1..Farmer		173 Wernham, John H..	bk E and o p	2	M F and O..	1..Laborer
1..Laborer	J 3	Westbrook, Rich..	n pt 1	1	M F and O..	1..Farmer
1..Laborer	J 4	Westbrook, Rich jr..	n pt 1	1	M F and O..	1..Farmer
1..Laborer	J 4½	Westbrook, Albert..	n e pt 1	1	M F and O..	1..Farmer
4..Farmer	J 348	Woolcock, Geo....	Kom D S, 4, 5 and o p....	2	M F and T..	1..Farmer
4..Farmer		✓				
PART II.--Persons Entitled to Vote at Municipal Elections ONLY.						
1..Farmer		23 Acres, Henry W	s e cor 4	1	Owner.....	28..Farmer

Jur. No. on Roll.	NAME.	LOT.	Concession or Street.	Other Description.	P.O.	Occupation
372	Alway, Elizabeth	s pt 1, 2	5	Owner	1	Widow
24	Arthur, William	s e cor 4	1	Owner	28	Farmer
78	Barber, Isabel	pt n pt 2 and 3	1	Owner	1	Farmer
83	Betts, John	s e cor 4	2	Owner	5	Merchant
19	Blanchard, Jas	s pt 3 and 4	1	Owner	3	Farmer
21	Blosdale, Frank	s e cor 4	1	Owner	28	Farmer
95	Branton, Wm	Kom, bk P, 9, 10	2	Owner	2	Farmer
380	Campbell, Norman L	n hf 3	5	Joint O	1	Farmer
158	Campbell, Jessie	Kom S S, bk I, 6, 7, 8	2	Owner	1	Spinster
8	Cleghorn, Edward	pt 2 and 3	1	Owner	3	Mgr gas wks
114	Chalmers, Mary	Well 36, 52	2	Owner	16	Widow
103	Cochran, Letitia	Well 28	2	Owner	1	Widow
7	Cowan, D J	pt 2 and 3	1	Owner	3	Merchant
181	Crawford, Jennet	w cor 6	2	Owner	1	Widow
234	Cross, Andrew	s w pt 3 and o p	3	Owner	39	Telg oper
97	Dark, Adelinc	Well G S, 14 and 15	2	Owner	1	Widow
9	Duffield, James C	pt 2 and 3	1	Owner	3	Merchant
71	Dunn, Wm sr	s w qr 1	2	Owner	1	Farmer
72	Dunn, Edward	s w qr 1	2	Owner	1	Farmer
73	Dunn, Wm jr	s w qr 1	2	Owner	1	Farmer

Jur. No. on Roll.
163 F
107 F
169 F
109 G
70 E
10 H
136 H
145 H
108 La
439 M
438 M
440 M
441 M
377 M
117 M
303 M
174 M
22 M
166 M

Polling Sub-Division No. 2.

P.O. Occupa- tion.	P.O. Occupa- tion	Jur. No. on Roll.	NAME.	LOT.	Concession or Street.	Other Description.	P.O. Occupa- tion
...	1..Widow	163	Ferguson, Elizabeth..	bk 8.....	2	Owner.....	1..Widow
...	28..Farmer	107	Ferguson, Jennie C..	Well 30	2	Owner.....	1..Spinster
...	1..Farmer	169	Fonger, Mrs Elizabeth..	Kom S S, bk G.....	2	Owner.....	1..Widow
...	5..Merchant	109	Geddes, Eliza....	Well 2, 3, 7, 8, 9, 24.....	2	Owner.....	45..Widow
...	3..Farmer	70	Eartley, George..	s e pt 1	2	Owner.....	5..Farmer
...	28..Farmer	10	Hobbs, T S	pt 2 and 3	1	Owner.....	3..Merchant
...	2..Farmer	136	Hord, Sarah J....	Kom SS, bk L,5,6,7 & o p..	2	Owner.....	1..Widow
...	1..Farmer	145	Hume, Christina	:Kom, bk O, 1, 2 and o p ..	2	Owner.....	9..Widow
...	1..Spinster	108	Lamont, Mary....	Well 13, and e hf 29	2	Owner.....	1..Widow
...	3..Mgr gas wks	439	McArthur, Mary..	s w qr 4	5	Joint O	1..Spinster
...	16. Widow	438	McArthur, Maggie.	s w qr 4	5	Joint O	1. Spinster
...	1..Widow	440	McArthur, Catharine..	s w qr 4	5	Joint O	1..Spinster
...	3..Merchant	441	McArthur, Lena..	s w qr 4	5	Joint O	1..Spinster
...	1..Widow	377	McBain, Dougal..	n hf 2.....	5	Owner.....	1. Farmer
...	39..Telg oper	117	McDonald, Jessie..	pt e pt 4	2	Owner.....	43..Widow
...	1..Widow	303	McDougall, Catharine..	n hf 4	4	Owner.....	1..Widow
...	3..Merchant	174	McDougall, Nancy..	Kom SS, bk F, 1,2,3 & o p	Owner.....	8..Widow	
...	1..Farmer	22	McEwan, John ..	s e cor 4.....	1	Owner.....	28..Farmer
...	1..Farmer	166	McIntyre, Annie..	Kom SS, bk C, 7 and o p..	2	Owner.....	1..Widow

Jur. No. on Roll.	NAME.	LOT.	Concession or Street.	Other Description.	P.O. Occupation
110	McKellar, William.	Well, 7 and pt 20	2	Owner	3.. Merchant
162	McLachlan, Flora.	Kom SS, bk F, 4	2	Owner	1.. Spinster
190	McLary, John.	s e qr 6	3	Owner	3.. Stove Mfr
142	McMurphy, Elizabeth.	bk N, 3, 4, 5, 6, 7	2	Owner	1.. Spinster
238	McTaggart, John.	s pt 4	3	Owner	44.. Grain M't
298	McTaggart, Donald.	n e qr 1 and w pt 2	4	Owner	8.. Gentleman
134	Oliver, Mary A.	Kom, bk M, 5	2	Owner	1.. Widow
127	Robins, Mary.	bk M, 1	2	Owner	1.. Widow
251	Rundle, Daniel F.	Kom D S, 275,276 & o p.	2	Owner	23.. Laborer
256	Scott, Henry	n e pt 6	3	Owner	38.. Farmer
1	Shanley, Col Jas.	n w pt 1 and o p.	1	Owner	3.. Mas in Chanc'ry
241	Turnbull, Thos G.	pt n hf 4	3	M F	1.. Grain B'r
353	Watson, Mary A.	s hf 8	4	Owner	1.. Widow

PART III.—Persons Entitled to Vote at Elections to the Legislative Assembly ONLY.

288	Craig, John	s hf 5	5	M F	1.. Laborer
187	Crombie, David sr.	G T Station, Komoka	2	M F and H.	1.. Sta Ag'nt
100	Gibson, Cyrneus A.	Well, lots 14 and 15	2	M F	1.. Laborer

Polling Sub-Division No. 2.

Occupation	Jur. No. on Roll.	NAME.	LOT.	Concession or Street.	Other Description.	P.O.	Occupation.
Merchant	160	Graham, Daniel	Kom, bk I, 1	2	M F and H	1	Laborer
Spinster	153	Hair, William	blk K, 10, 11, 12	2	M F and H	1	Laborer
Shoe Mfr	126	Joyce, William	Well, 11 and 27	2	M F	1	Laborer
Spinster	125	Joyce, David	Well, 11 and 27	2	M F and H	1	Laborer
Grain M't	124	Joyce, Robert	Well, 11 and 27	2	M F	1	Laborer
Gentlem'n	99	Lewis, Andrew A.	Well, 14 and 15	2	M F	1	Laborer
Widow	113	Lowe, William C.	Well, 21	2	M F	1	Painter
Widow	151	Morrison, Alex	bk O, 7	2	M F and T	1	Laborer
Laborer	17	McClurg, Robert	pt n e pt 4	1	M F and O	1	Gentlem'n
Farmer	156	McKellar, Dougald P.	Kom, bk D, 1, 2	2	M F and H	1	Laborer
Chanc'ry	157	McKellar, Duncan R.	bk D, 1, 2	2	M F	1	Laborer
Grain B'r	387	McKellar, Donald	.5	5	M F and H	1	Farmer
Widow	386	McLean, Dougald	ln hf 4	5	M F	1	Laborer
ve	144	Sinclair, Daniel	bk N, 3	2	M F	1	Invalid
Laborer	154	Stewart, Wm sr.	G T R property, G W Div		M F and H	1	Laborer
Sta Ag't	155	Stewart, Wm jr.	G T R property, G W Div		M F	1	Laborer
Laborer	98	Wilcott, Wm B.	Well, G, S, 14 and 15	2	M F	1	Clerk
	140	Wigley, John	Kom, bk K, 1	2	M F and H	1	Merchant

Polling Sub-Division No. 3,

Comprising Lots Nos. 1 to 6, inclusive, in the 6th, 7th, 8th, 9th and 10th Concessions, and Lots Nos. 1 to 7, inclusive, in the 11th, 12th and 13th Concessions.

PART I.—Persons Entitled to Vote at BOTH Municipal Elections and Elections to the Legislative Assembly.

No. on Roll	NAME.	LOT.	Concession or Street.	Other Description.	P.O.	Occupation
825	Aches, Joseph	s w pt 4	11	M F and O.	7	Farmer
826	Aches, Byron	s w pt 4	11	M F and O.	7	Farmer
747	Aitkins, Joseph	s hf n hf 1	10	M F and O.	7	Farmer
981	Anderson, Hugh	n hf 1	13	M F and T.	27	Farmer
506	Blair, Charles	e pt s hf 6	7	M F and O.	7	Farmer
561	Barclay, Eli R.	pt e pt 4, 5 and o p	8	M F and O.	7	Merchant
562	Barclay, Geo E	w pt 4 and o p	9	M F and O.	7	Farmer
773	Barclay, Alvin	pt w hf 5	8	M F and T.	7	Laborer
882	Bartett, Chas	n w pt 1	11	M F and O.	22	Farmer
566	Barnes, James	pt 5	8	M F and O.	7	Laborer
567	Barnes, Robt	pt 5	8	M F and T.	7	V S
746	Campbell, Arch J	s hf 1	10	M F and T.	22	Farmer
676	Campbell, James	s hf 5 and o p	9	M F and O.	7	Farmer

Polling Sub-Division No. 3.

Jur. No. on Roll.	NAME.	LOT.	Concession or Street.	Other Description.	P.O.	Occupation
J677	Campbell, John H.	s hf 5 and o p	9	M F and O.	7.	Farmer
J988	Chapman, John	n hf 3	13	M F and O.	27.	Farmer
J989	Chapman, Wm	n hf 3	13	M F and O.	27.	Farmer
J990	Chapman, Lyman	n hf 3	13	M F and O.	27.	Farmer
J995	Crawford, John	s hf 5	13	M F and O.	27.	Farmer
J750	Cutler, Jeremiah O.	s w pt 2	10	M F and O.	7.	Farmer
J751	Cutler, Hiram	s w pt 2	10	M F and O.	7.	Farmer
J759	Cutler, Edwin	s pt 3	10	M F and O.	7.	Farmer
J914	Daniels, Elias	n hf 7	12	M F and T.	27.	Farmer
J670	Davis, Rev G B	pt w hf 5	9	M F and T.	7.	Minister
J498	Fletcher, Malcolm	n hf 5 and o p	7	M F and O.	7.	Farmer
913	Fortner, Henry	n hf 7	12	M F and O.	27.	Farmer
J824	Fraser, Henry	e hf 3	11	M F and O.	27.	Farmer
563	Glass, Matthew J.	pt 4	8	M F and T.	7.	M D
J592	Gray, Alexander	s pt 6	8	M F and O.	15.	Farmer
J593	Gray, Dougald G.	s e qr 6	8	M F and O.	15.	Farmer
J578	Hamacher, Isaac	w pt 5	8	M F and T.	7.	Farmer
J846	Hambly, Wm	s hf 7 and o p	11	M F, O & T.	7.	Farmer
J845	Harris, Hiram	n e qr 7 and o p	11	M F and O.	27.	Farmer
J752	Harris, Benj B.	n w pt 2	10	M F and O.	7.	Farmer

Polling Sub-Division No. 3.

Jur.	No. on Roll.	NAME.	LOT.	Concession or Street.	Other Description.	P.O.	Occupation
J753		Harris, Wilfred E.	n w pt 2	10	M F and O	7	Farmer
		758 Hillis, James T.	pt s hf 2	10	M F and T	7	Laborer
		550 Hunt, Edward L.	s w pt 1 and o p	8	M F and O	7	Farmer
J551		Hunt, Aaron L.	s e pt 2 and o p	8	M F and O	7	Farmer
J908		Kennings, Geo sr.	n w qr 6	12	M F and T	27	Farmer
J909		Kennings, Geo jr.	n w qr 6	12	M F and T	27	Farmer
J910		Kennings, Andrew	n w qr 6	12	M F and T	27	Farmer
J548		Ladell, Fred M.	n hf 2	8	M F and O	7	Farmer
J549		Ladell, Wm F.	n hf 2	8	M F and O	7	Farmer
J429		Lamont, Hector	s hf 3	6	M F and O	1	Farmer
J428		Lamont, Hugh	s hf 2	6	M F and O	1	Farmer
		992 Matthews, Thos	pt n hf 4	13	M F and O	27	Blacks'th
J505		Mitchell, John	s w qr 6 and o p	7	M F and O	7	Farmer
		903 Moore, William	s hf 4	12	M F and O	27	Farmer
J897		McArthur, Laehlan	n e pt 3	12	M F and O	27	Farmer
J896		McArthur, Angus	n w pt 3	12	M F and O	27	Farmer
		898 McArthur, Wm A.	n e pt 3	12	M F & F S	27	Farmer
		660 McArthur, John	.2 and o p	9	M F & J O	7	Farmer
J661		McArthur, Dougal	.2 and o p	9	M F & J O	7	Farmer
		663 McArthur, Wm	...2	9	M F & J O	7	Invalid

Polling Sub-Division No. 3.

Lot	No. on Roll.	NAME.	LOT.	Concession or Street.	Other Description.	P.O.	Occupation
575		McColl, Thomas	pt w pt 5	8	M F and O	7	Gentleman
568		McGugan, Duncan	n pt 1	9	M F and O	7	Farmer
5987		McGugan, John	s hf 3	13	M F and T	27	Farmer
500		McIntyre, Malcolm A.	s hf 5 and o p	7	M F and O	7	Farmer
501		McIntyre, Peter M.	s hf 5 and o p	7	M F and O	7	Farmer
502		McIntyre, Arch F.	s hf 5 and o p	7	M F and O	1	Farmer
503		McIntyre, James A.	s hf 5 and o p	7	M F and O	7	Farmer
5435		McIntyre, Donald	n hf 4	6	M F and O	7	Farmer
436		McIntyre, Duncan D	n hf 4	6	M F & F S	7	Farmer
437		McIntyre, Peter J.	n hf 4	6	M F & F S	7	Farmer
5442		McIntyre, Duncan	n hf 5	6	M F and O	7	Farmer
557		McIntyre, Arch	s hf 4 and n w qr 4	8	M F and O	7	Farmer
558		McIntyre, John	s hf and n w qr 4	8	M F and T	7	Farmer
559		McKay, Alexander	n e pt 4	8	M F and O	7	Farmer
560		McKay, Francis	n pt w qr 4 and o p	8	M F and O	7	Farmer
668		McKay, Nathan	e pt 4	9	M F and O	7	Farmer
5893		McKay, Urias A.	n e qr 1	12	M F and O	27	Farmer
669		McKay, Albert E.	e hf 4	9	M F and O	7	Farmer
911		McKay, John	s hf 6	12	M F and O	27	Farmer
426		McKellar, John	n hf 1	6	M F and O	7	Farmer
5427		McKellar, Daniel A.	n hf 1	6	M F and O	7	Farmer
588		McKellar, Neil	pt n e hf 5	8	M F and O	7	Gentlem'n

Polling Sub-Division No. 3.

Jur.	No. on Roll.	NAME.	LOT.	Concession or Street.	Other Description.	P.O.	Occupation
	230	McKinnon, Rodcrick	pt 5 and o p	8	M F and O	7	Gentlem'n
J931		McKinnon, David R.	n hf 4	11	M F and O	7	Farmer
	486	McLean, Duncan sr.	1 and o p	7	M F and O	7	Farmer
J487		McLean, Duncan jr.	1 and o p	7	M F and O	7	Farmer
J489		McLean, Robt.	1 and o p	7	M F and O	7	Farmer
J488		McLean, John	1 and o p	7	M F and O	7	Farmer
J490		McLean, Arch.	1 and o p	7	M F and O	7	Farmer
J491		McLean, Daniel	1 and o p	7	M F and O	7	Farmer
	674	McLean, James	s cor 5	9	M F and O	7	Laborer
	675	McLean, James H.	s cor 5	9	M F and T	7	V S
	1006	McLellan, Duncan	n e qr 7 and o p	13	M F and O	27	Farmer
J1007		McLellan, Hugh	n e qr 7 and o p	13	M F and O	27	Farmer
	582	McNeil, James B.	pt w pt 5	8	M F and O	7	Blacks'th
	583	McNeil, James W.	pt w pt 5	8	M F and O	7	Laborer
	584	McNeil, John W.	pt w pt 5	8	M F and O	7	Laborer
	585	McNeil, Charles A.	pt w pt 5	8	M F and O	7	Laborer
J760		McPherson, John	s hf 4	10	M F and O	27	Farmer
J761		McPherson, Wm A.	s hf 4	10	M F and O	7	Farmer
J589		McVicar, John	e hf 5 and o p	8	M F and O	7	Farmer
J590		McVicar, Arthur	e hf 5 and o p	8	M F and O	7	Farmer
	594	McVicar, John A.	s cor s e qr 6	8	M F and O	7	Laborer
	595	McVicar, Peter J.	s cor s e qr 6	8	M F and O	7	Laborer

Polling Sub-Division No. 3.

Occupation	Jur. No. on Roll.	NAME.	LOT.	Concession or Street.	Other Description.	P.O.	Occupation
ntlem'n	574	Nagle, James E . . .	pt n pt 5	8	M F and O	7	Laborer
Farmer	J906	Neff, Ambrose	hf 5	12	M F and T	27	Farmer
Farmer	J912	Neff, Emerson	hf 7	12	M F and O	27	Farmer
Farmer	J998	Newell, Cyrus	pt n hf 5	13	M F and O	27	Farmer
Farmer	J996	Owens, David R	n w pt 5	13	M F and O	27	Merchant
Farmer	J904	Patterson, Dougal	n hf 5	12	M F and O	27	Farmer
Farmer	J495	Paul, William	s hf 4	7	M F and O	7	Farmer
Farmer	J496	Paul, Malcolm	n hf 4	7	M F and O	7	Farmer
Farmer	J497	Paul, William	n hf 4	7	M F and O	7	Farmer
Farmer	J993	Perry, John	n hf s hf 4	13	M F and O	27	Farmer
Blacks'th	J994	Perry, Geo B	n hf s hf 4	13	M F and O	27	Farmer
Laborer	J430	Pincombe, George	n hf 2 and o p	6	M F and O	7	Farmer
Laborer	J494	Pincombe, John jr	s hf 3	7	M F and O	7	Farmer
Laborer	J434	Pincombe, Richard	n hf 3	6	M F and O	7	Farmer
Farmer	J546	Pincombe, William	w pt 1	8	M F & F S	7	Farmer
Farmer	J545	Pincombe, John sr	w pt 1	8	M F and O	7	Farmer
Farmer	J547	Pincombe, James	w pt 1	8	M F & F S	7	Farmer
Farmer	J827	Post, Edwin	n pt 7 and 8 and o p	11	M F and O	27	Farmer
Laborer	J830	Post, Wm D	n pt 8 and o p	11	M F and T	27	Farmer
Laborer	J829	Post, Alva E	n pt 7 and 8 and o p	11	M F and T	27	Farmer

Jur.	No. on Roll.	NAME.	LOT.	Concession or Street.	Other Description.	P.O.	Occupation
	591	Robinson, Bert	pt e hf 5	8	M F and O.	7.	Farmer
J444		Sinclair, Duncan	s hf 5	6	M F and O	4.	Farmer
J555		Sinclair, Archibald	.3	8	M F and O	7.	Farmer
	556	Sinclair, Colin F.	.3	8	M F & F S.	7.	Farmer
	150	Sinclair, Archibald	.6 and o p	6	M F and O.	4.	Farmer
J445		Sinclair, Laughlin	.6 and o p	6	M F and O.	4.	Farmer
J446		Sinclair, Arch R.	.6 and o p	6	M F and O.	4.	Farmer
	901	Smith, Leonard	s hf 2 and o p	13	M F and O.	27.	Farmer
J934		Smith, Judson	s hf 2 and o p	13	M F and T.	27.	Farmer
J902		Smith, Burton	s pt 3	12	M F and T.	27.	Farmer
	762	Stoner, John	n hf 4	10	M F and O.	27.	Farmer
J991		Stoner, Ephraim	n hf 4	13	M F and O.	27.	Farmer
J763		Stoner, Alfred	n hf 4	10	M F and O.	27.	Farmer
J894		Stoner, Ellis	n hf 2	12	M F and O.	27.	Farmer
J895		Stoner, Martin	n hf 2	12	M F and O.	27.	Farmer
	579	Thompson, William	pt w pt 5	8	M F and T.	7.	Shoem'k'r
J681		Thomas, Samuel	s w qr 6	10	M F and T.	15.	Agent
	1001	Treharne, David	n w qr 7	13	M F and O.	27.	Farmer
J1002		Treharne, Llewellyn	n w qr 7	13	M F and O.	27.	Farmer
	832	Treharne, John	s e pt 4 and o p	11	M F and O.	27.	Farmer
J833		Treharne, David	s hf 2 and o p	11	M F and O.	27.	Farmer

O. Occupation	Jur. No. on Roll.	NAME.	LOT.	Concession or Street.	Other Description.	P.O.	Occupation.
Farmer	J834	Treharne, Wm	s e pt 4 and o p	11	M F and O.	27	Farmer
Farmer	J576	Tuckey, George	pt w pt 5	8	M F and O.	7	Bl'ksmith
Farmer	569	Vanderburg, Walter	pt 5	8	M F and T.	7	Laborer
Farmer	570	Vanderburg, Vernon	pt 5	8	M F and T.	7	Laborer
Farmer	748	Walters, David	n hf 5 and o p	10	M F and O.	7	Farmer
Farmer	J749	Walters, Thaddeus	n pt 1 and o p	10	M F and T.	7	Farmer
Farmer	J764	Walters, Luther	s pt n hf 5 and o p	11	M F and T.	7	Farmer
Farmer	J1003	Walters, Joseph	n e qr 6	13	M F and O.	27	Farmer
Farmer	J999	Walters, Isaac	n w qr 6 and o p	13	M F and O.	27	Farmer
Farmer	J1000	Walters, David	n w qr 6 and o p	12	M F and O.	27	Farmer
Farmer	889	Ward, Truman H.	s hf 1, 2, and o p	12	M F and O.	27	Farmer
Farmer	J890	Ward, Oliver D.	s hf 1, 2	12	M F & J O.	27	Farmer
Farmer	J891	Ward, Hyland B.	s hf 2 and o p	12	M F & J O.	27	Farmer
Farmer	672	Wiggins, Geo Arthur	pt s hf 5	9	M F and O.	7	Laborer
Farmer	J823	Woodward, Philip B.	n pt 1, 2	11	M F and O.	27	Farmer
Shoem'k'r	838	Woodward, Francis	n pt 5	11	M F and O.	27	Farmer
Agent							
Farmer	1004	Zavitz, Abraham	s hf 6 and o p	13	M F and O.	27	Farmer
Farmer	J1005	Zavitz, Ephraim	s hf 16 and o p	13	M F and O.	27	Farmer
Farmer	J1008	Zavitz, Isaac	s hf 7	13	M F and O.	27	Farmer
Farmer	573	Zavitz, James	pt w hf 5	8	M F and O.	7	Merchant

Jur.	No. on Roll.	NAME.	LOT.	Concession or Street.	Other Description.	P.O.	Occupation
	577	Zavitz, Benj P	w pt 5	8	M F and O	7	Watchmak
	586	Zavitz, Daniel M	e pt w pt 5	8	M F and O	7	Farmer
	665	Zavitz, Joram	w hf 3	9	M F and O	7	Farmer
	666	Zavitz, Alfred	e hf 3	9	M F and O	7	Farmer
	667	Zavitz, Walter	e hf 3	9	M F and O	7	Farmer
	679	Zavitz, Isaac	n hf 5 and o p	9	M F and O	15	Farmer
	680	Zavitz, Jonah D	s w qr 6 and o p	10	M F and O	15	Farmer
	843	Zavitz, Chas W	n w qr 7 and o p	11	M F and O	27	Farmer
	754	Zavitz, John C	n pt 3 and o p	10	M F and O	7	Farmer
	754½	Zavitz, Hiram W	n e pt 2 and o p	10	M F and O	7	Farmer
	765	Zavitz, Hugh W	s e qr 6	10	M F and O	15	Farmer
	840	Zavitz, Ephraim	w hf 6 and o p	11	M F and O	7	Farmer
	842	Zavitz, Norman	e hf 6 and o p	11	M F and O	7	Farmer
	851	Zavitz, Elijah	n pt w pt 5 and o p	8	M F and O	7	Gentlem'n
	899	Zavitz, Eliphlet	n hf 4	12	M F and O	27	Farmer
	983	Zavitz, David	s e qr 1	13	M F and O	27	Farmer
	982	Zavitz, Walter	s w qr 1	13	M F and O	27	Farmer
	985	Zavitz, John U	n hf 2	13	M F and O	27	Farmer
	673	Zavitz, Noble J	pt s pt 5	9	M F and O	7	Wag Mak

PART II.—Persons Entitled to Vote at Municipal Elections ONLY.

757 Brooks, Thomas .s pt s hf 2 10.... Owner 42.. Farmer

Polling Sub-Division No. 3.

Occupation	No. on Roll.	NAME.	LOT.	Concession or Street.	Other Description.	P.O.	Occupation
Watchmak	572	Campbell, Christina	pt w pt 5	8	Owner	32	Widow
Farmer	744	Campbell, Malcolm	s hf 1	10	Owner	22	Farmer
Farmer	745	Campbell, Peter T	s hf 1	10	Owner	22	Farmer
Farmer	563	Fletcher, Jane	pt n pt 5	8	Owner	7	Widow
Farmer	907	Fortner, Lewis	n w qr 6	12	Owner	8	Agent
Farmer	642	Johnson, Hugh D	s hf 7 and o p	11	Owner	8	P S Insp'r
Farmer	581	Ketchum, Mary	pt w pt 5	8	Tenant	7	Widow
Farmer	662	McArthur, Ann	2	9	Owner	7	Spinster
Farmer	552	McGugan, Godfrey	s e pt 2	8	Owner	7	Farmer
Farmer	553	McGugan, John A	s e pt 2	8	Owner	7	Farmer
Gentlem'n	554	McGugan, Arch B	s e pt 2	8	Owner	7	Farmer
Farmer	431	McKellar, Alex	s hf 1	6	Owner	40	Sup'yMer
Farmer	986	McLachlin, Betsy	s hf 3	13	Owner	10	Widow
Farmer	493	McLellan, Donald	e hf 2	7	Owner	8	Farmer
Farmer	492	McLellan, Angus	e hf 2	7	Owner	8	Farmer
Wag Mak	905	Neff, Samuel	s hf 5	12	Owner	33	Farmer
Farmer	671	Rosser, Hannah	pt w pt 5	9	Owner	7	Widow
Farmer	571	Shotwell, Tamera A	n w cor 5	8	Owner	7	Spinster

Jur.	No. on Roll.	NAME.	LOT.	Concession or Street.	Other Description.	P.O.	Occupation.
	659	Wark, Thomas	s cor 1	9	Owner	7	Farmer
	580	Webster, Sarah	pt w pt 5	8	Owner	7	Widow

PART III.—Persons Entitled to Vote at Elections to the Legislative Assembly ONLY.

	587	Crothers, Wesley	e pt w hf 5	8	M F	7	Laborer
	844	Corns, William	w hf 6	11	M F	7	Laborer
	499	Ely, Charles	4	9	M F	1	Laborer
	664	Evans, David	2	9	M F	7	Laborer
	432	Greenslade, Arthur	n hf 2	6	M F	7	Laborer
	433	Hayes, Edward	n hf 2	6	M F	7	Laborer
	892	Merical, Ernest	s hf 1	12	M F	27	Laborer
	688	McGillivray, John	n cor 6	9	M F and H	15	Gentlem'n
	997	Owen, Thos M	n hf 5	13	M F	27	Clerk
	564	Page, John	w pt 4	8	M F	7	Laborer
	900	Rose, Alex	s pt 6	11	M F and T	27	Sc Teach
	682	Schooly, Arnold G	n hf 5	9	M F	7	Laborer
	841	Scott, Kinard	w hf 6	11	M F	27	Laborer
	443	Steinhoff, Joseph	n hf 5	6	M F	1	Laborer
	839	Woodward, Francis	n pt 5	11	M F	27	Laborer

Polling Sub-Division No. 4,

Comprising the south half of Lots Nos. 7 and 8, in the 6th Concession, and the North half of Lots Nos. 7 to 14, inclusive, in the 6th Concession, and the whole of Lots Nos. 7 to 14, inclusive, in the 7th, 8th, 9th and 10th Concessions, and Lots Nos. 8 to 14, inclusive, in the 11th, 12th and 13th Concessions.

PART I.—Persons Entitled to Vote at BOTH Municipal Elections and Elections to the Legislative Assembly.

Jur.	No. on Roll.	NAME.	LOT.	Concession or Street.	Other Description.	P.O.	Occupation
		1021 Barr, Hugh	n w qr 12	13	M F and O	27	Farmer
	J932	Bennett, James L.	s hf 12	12	M F and O	21	Farmer
	J865	Briggs, Wm.	s w qr 14	11	M F and O	24	Farmer
	J867	Briggs, John	s e qr 14	11	M F and O	24	Farmer
	J521	Brown, Arch G	n hf 12	7	M F and O	21	Farmer
	J522	Brown, James D.	n hf 12	7	M F and O	21	Farmer
	J771	Bycraft, John E.	s e qr 8	10	M F and O	15	Farmer
	J933	Cameron, Alex A.	s hf n hf 13, 14	12	M F and O	21	Farmer
	J783	Cameron, Alexander	n hf 13, 14	10	M F and O	21	Farmer
	J856	Cameron, John C.	e hf 11	11	M F and O	15	Farmer
	J861	Cameron, Duncan	n hf 14 and o p	11	M F and O	21	Farmer
	J862	Cameron, Edgar	n hf 14 and o p	11	M F and O	21	Farmer

Polling Sub-Division No. 4.

Jur.	No. on Roll.	NAME.	LOT.	Concession or Street.	Other Description.	P.O.	Occupation
J1	631	Campbell, John A.	n hf 13 and o p	7	M F & J O	21	Farmer
7	527	Campbell, Donald A.	n hf 13 and o p	7	M F and O	21	Farmer
J5	526	Campbell, Peter B.	n w qr 14 and o p	7	M F and T	21	Farmer
7	528	Campbell, Robt P.	n e qr 14 and o p	7	M F and O	21	Farmer
7	525	Campbell, Alex P.	s hf 13 and o p	7	M F and O	21	Farmer
7	621	Campbell, Duncan H.	s w qr 10 and o p	8	M F and O	21	Farmer
J9	627	Campbell, John D.	s hf 13 and o p	10	M F and O	21	Farmer
J9	736	Campbell, Arch D.	n hf 16 and o p	10	M F and O	21	Farmer
J10	787	Campbell, Daniel	s hf 13 and o p	10	M F and O	21	Farmer
10	788	Campbell, Duncan A.	s hf 14	10	M F and O	21	Farmer
8	520	Carmichael, Duncan L.	s e qr 11 and o p	8	M F and O	21	Farmer
J3	523	Carmichael, Arch A.	s pt 12 and o p	7	M F and O	21	Farmer
10	705	Carmichael, John	s hf 10 and o p	9	M F and O	15	Farmer
J10	706	Carmichael, Chas M T.	s hf 10 and o p	9	M F and O	15	Farmer
J10	509	Caverhill, Walter A.	n hf n hf 8	7	M F and O	15	Farmer
J10	918	Chelew, John	n hf 8	12	M F and T	27	Farmer
J10	920	Chelew, Martland	n hf 8	12	M F and T	27	Farmer
J10	919	Chelew, William	n hf 8	12	M F and T	27	Farmer
J10	1034	Clampitt, George	s e qr 14	13	M F and O	21	Farmer
J51	1035	Clampitt, Wm H.	s e qr 14	13	M F and O	21	Farmer
J51	604	Clare, James	n w cor 8	8	M F and O	12	Clerk
J51	603	Clare, Samuel	n w cor 8	8	M F and O	15	Blacks'th

Polling Sub-Division No. 4.

Jur.	No. on Roll.	NAME.	LOT.	Concession or Street.	Other Description.	P.O.	Occupation
	J1014	Colburg, John	s e qr 8	13	M F and O	27	Farmer
	756	Cooper, Benj	pt n hf 7	10	M F and T	7	Farmer
	J513	Crawford, Peter	s hf 11	7	M F and O	21	Farmer
	702	Cutler, Ellis	pt 9 and o p	9	M F and O	15	Farmer
	703	Cutler, Wm A	pt 9 and o p	9	M F and T	15	Farmer
	776	Cutler, Amos	s hf 9, 10	10	M F and O	15	Farmer
	J923	Daniels, John	s hf 10	12	M F and O	27	Farmer
	J924	Daniels, Myron L	s hf 10	12	M F and O	27	Farmer
	J1017	Daniels, Thomas	n hf 10 and o p	13	M F and O	27	Farmer
	1018	Daniels, Orville	n hf 10	13	M F & F S	27	Farmer
	805	Deguire, Octave	pt w cor 8	8	M F and O	15	Miller
	J559	Dewar, John D	n hf 13	11	M F and O	21	Farmer
	1022	Dewar, Arch	s hf 11, 12	13	M F and O	31	Farmer
	J1025	Dewar, Peter A	s hf 11, 12	13	M F & J O	31	Farmer
	J1023	Dewar, Donald	s hf 11, 12	13	M F & J O	31	Farmer
	J1024	Dewar, Arch jr	s hf 11, 12	13	M F and O	31	Farmer
	J1019	Dewar, Peter	s hf 10	13	M F and O	31	Farmer
	J1032	Gillis, Arch	n hf 13 and o p	13	M F and O	31	Farmer
	J515	Graham, Peter A	n hf 10	7	M F and O	21	Farmer
	J516	Graham, Arch L	n hf 10	7	M F and O	21	Farmer
	J517	Graham, Norman	n hf 10	7	M F and O	21	Farmer

Polling Sub-Division No. 4.

No. on Roll.	NAME.	LOT.	Concession or Street.	Other Description.	P.O.	Occupation
J630	Graham, Neil A.	s cor 13	8	M F and O.	21	Blacks'ith
J632	Graham, Dougal A.	s hf 13 and o p	8	M F and O.	21	Farmer
J633	Graham, Arch A.	s w pt 14	8	M F and O.	21	Farmer
J635	Graham, Duncan A P.	s hf 14	8	M F and O.	21	Farmer
J716	Graham, Arch J.	s hf 13 and o p	9	M F and O.	21	Farmer
J778	Graham, Peter J.	n hf 12 and o p	10	M F and O.	21	Farmer
629	Graham, Duncan P.	pt s w pt 13 and o p	8	M F & J O.	21	Gentleman
J717	Graham, Duncan jr.	n hf 13 and o p	9	M F & J O.	21	Farmer
J447	Gray, David	w hf 7 and o p	6	M F and O.	4	Farmer
596	Gray, Malcolm	s hf 7 and o p	8	M F and O.	7	Farmer
J597	Gray, Newton I.	s hf 7 and o p	8	M F and O.	7	Farmer
J1026	Harris, John S.	n e qr 12	13	M F and O.	27	Farmer
J791	Henderson, Hugh	n hf 14 and o p	9	M F and O.	24	Farmer
J611	Hillard, Samuel	n cor 8 and o p	8	M F and O.	15	Farmer
J613	Hillard, Edmund	s e pt 8 and o p	9	M F and T.	15	Farmer
J1010	Hodgins, Samuel	s w qr 8	13	M F and O.	27	Farmer
471	Hodgson, Nathan	n hf 13	6	M F and O.	4	Farmer
J472	Hodgson, Wm J.	n hf 13	6	M F and O.	4	Farmer
922	Hunter, Robt sr	n hf 9 and o p	12	M F and O.	27	Farmer
928	Hunter, Wm sr	s e qr 11	12	M F and O.	27	Farmer
927	Hunter, Robt jr	s e qr 11	12	M F & F S.	27	Farmer

Polling Sub-Division No. 4.

Dist.	No. on Roll.	NAME.	LOT.	Concession or Street.	Other Description.	P.O.	Occupation.
	929	Hunter, Alex.....	e qr 1112	M F & F S.	27	Farmer
	1012	Jenkins, Benjamin	.n cor 813	M F and O.	27	Farmer
	J854	Lamont, Duncan	.1011	M F and O.	15	Farmer
	849	Leng, Robert	...s hf 1311	M F and O.	21	Farmer
	J850	Leng, George	...n hf 811	M F and O.	21	Farmer
	J1011	Lewis, Charles	.n w qr 813	M F and T.	27	Farmer
	J628	Lindsay, Norman	.cen pt s hf 128	M F and T.	21	Minister
	J696	Livingston, Joseph	.e pt 7 and o p9	M F and T.	15	Farmer
	1015	Lumby, Philip	...n pt 913	M F and O	27	Farmer
	J693	Marsh, Jacob	...s pt 7, 89	M F and O.	15	Merchant
	694	Marsh, Edgar J.	s pt 79	M F and T.	15	Miller
	698	Marsh, Wm J.	...pt s pt 79	M F and T.	15	Laborer
	J695	Marsh, Elihu	...e pt 7 and o p9	M F and O.	15	Laborer
	J847	Mitchell, Alexander	...s hf 811	M F and O.	15	Farmer
	J708	Mitchell, Robert	...s w qr 11 and o p10	M F and O.	15	Farmer
	J707	Mitchell, Peter jr.	...n hf 10 and o p9	M F and O.	15	Farmer
	614	Muma, Christian	...n pt 8 and o p8	M F and O.	15	Farmer
	J848	Muma, Michael K.	...s pt 911	M F and O.	15	Farmer
	J615	Muma, John	...n hf 8 and o p8	M F and O.	15	Farmer
	474	McArthur, John	...n hf 14 and o p6	M F and O.	21	Farmer

Jur. No. on Roll.	NAME.	LOT.	Concession or Street.	Other Description.	P.O.	Occupation.
510	McArthur, Malcolm.	n hf 9 and o p	7	M F and O.	15.	Farmer
473	McBain, Alexander.	n cor 12.	6	M F and O.	21.	Gentlem'n
934	McCallum, John.	s pt 13 and o p	12.	M F and O.	24.	Farmer
935	McCallum, D Francis.	s pt 13 and o p	12.	M F and O.	24.	Farmer
936	McCallum, Walter S.	s pt 13 and o p	12.	M F and O.	24.	Farmer
937	McCallum, Malcolm.	s pt 13 and o p	12.	M F and O.	24.	Farmer
938	McCallum, Dougal.	s hf 14	12.	M F and O.	24.	Farmer
513	McClurg, Edward.	s hf 10	7	M F and O.	21.	Farmer
925	McColl, Peter.	n hf 10	12.	M F & T O.	27.	Farmer
1033	McColl, John.	s w qr 14	13.	M F and O.	21.	Farmer
456	McCollow, Robt L.	n pt 8.	6	M F and O.	15.	Painter
457	McCollow, Wilber.	n pt 8.	6	M F and O.	15.	Painter
930	McFarland, Duncan.	n hf 11	12.	M F and O.	21.	Farmer
625	McIntyre, Hector.	e pt 12 and o p	8	M F and O.	21.	Farmer
624	McIntyre, Peter D.	w pt 12.	8	M F and O.	21.	Farmer
512	McKinlay, Donald sr.	s w qr 8 and o p	7	M F and O.	4.	Farmer
618	McLean, Theophilus.	s hf 9.	8	M F and O.	15.	Farmer
619	McLean, John L.	s hf 9	8	M F & F S.	15.	Farmer
620	McLean, Neil.	s hf 9.	8	M F & F S.	15.	Farmer
637	McNair, James.	s hf 14 and o p	9	M F and O.	21.	Farmer
454	McVicar, John.	n e pt 8	6	M F and O.	4.	Farmer

Polling Sub-Division No. 4.

Jur.	No. on Roll.	NAME.	LOT.	Concession or Street.	Other Description.	P.O.	Occupation
J606		McVicar, Peter . . s hf 8	8	M	F and O.	15	Farmer
609		McVicar, John D. . s hf 8	8	M	F & F S.	15	Farmer
607		McVicar, Duncan B. . s hf 8	8	M	F & F S.	15	Farmer
608		McVicar, Neil . . s hf 8	8	M	F & F S.	15	Farmer
610		McVicar, Hugh E. . s hf 8	8	M	F & F S.	15	Farmer
J686		Nagle, Lawrence . . w pt 7	9	M	F and O.	15	Farmer
J709		Paul, Chas A . . . n hf 11	9	M	F and O.	15	Farmer
J616		Price, Arthur . . . n w qr 9	8	M	F and O.	15	Farmer
835		Robinson, John . . pt s pt 9	9	M	F and T.	15	Farmer
836		Robinson, John W. . pt s pt 9	9	M	F and T.	15	Laborer
837		Robinson, James R. . pt s pt 9	9	M	F and T.	15	Laborer
768		Salsbury, James H. . s e qr 7	10	M	F & F S.	15	Farmer
767		Salsbury, John . . s e qr 7	10	M	F & F S.	15	Farmer
636		Scott, John n hf 14 and o p	8	M	F & J O.	21	Farmer
857		Scott, William . . s hf 12	11	M	F and O.	21	Farmer
J858		Scott, Hugh s hf 12	11	M	F and O.	21	Farmer
J532		Shanklin, Wm . . s hf 14	7	M	F and O.	21	Farmer
J507		Shotwell, Thos H. . n pt 7	7	M	F and O.	15	Farmer
712		Simmons, Chas M. . s hf 12 and o p	10	M	F and O.	21	Farmer
J450		Sinclair, John . . . e hf 7 and o p	6	M	F and O.	21	Farmer

Polling Sub-Division No. 4.

Jur. No. on Roll.	NAME.	LOT.	Concession or Street.	Other Description.	P.O.	Occupation
J451	Sinclair, Colin	e hf 7 and o p	6	M F and O	4	Farmer
J458	Sinclair, Neil	n hf 9 and o p	6	M F and O	15	Farmer
J775	Sinclair, John	pt n hf 9	10	M F and O	15	Farmer
J691	Smith, Daniel	n w pt 7	8	M F and O	15	Miller
J714	Smith, John A	12	9	M F and O	21	V S
J855	Sinclair, Laughlin	w hf 11	11	M F and O	21	Farmer
462	Stewart, Donald	n hf 10, 11, 12	6	M F & J O	21	Farmer
J463	Stewart, Donald A	n hf 10, 11, 12	6	M F & J O	21	Farmer
J464	Stewart, John A	n hf 10, 11, 12	6	M F and O	21	Farmer
691	Thomas, James R	pt s pt 7	9	M F and O	15	Laborer
692	Thomas, Dougal P	pt s pt 7	9	M F & F S	15	Laborer
J452	Tuckey, Chas D	s hf 8	6	M F and T	4	Farmer
J931	Walters, Wallace	n hf 12	12	M F and O	21	Farmer
J1013	Walters, William	pt n pt 8 and o p	13	M F and O	27	Farmer
508	Wagh, John	s hf 7	7	M F and O	4	Farmer
455	White, Duncan	n cor 8	6	M F and O	4	Farmer
915	Wilson, Thomas	s e pt 8	12	M F and O	15	Farmer
J916	Wilson, Fernando	s e pt 8	12	M F and O	15	Farmer
J600	Wood, Egbert	n e pt 7 and o p	8	M F and O	15	Farmer
J602	Wood, Clarence	n e pt 7	8	M F and T	15	Tailor
683	Zavitz, Daniel	s w cor 7 and o p	9	M F and O	15	Farmer

Polling Sub-Division No. 4.

Jur.	No. on Roll.	NAME.	LOT.	Concession or Street.	Other Description.	P. O.	Occupation
	J684	Zavitz, Edgar M.	s w cor 7 and o p	9	M F & J O	15	Farmer
	689	Zavitz, Edmund H.	pt s pt 7	9	M F and O	15	Laborer
	690	Zavitz, Newton J.	pt s pt 7	9	M F and O	15	Laborer
	J769	Zavitz, Samuel P.	s w qr 7, 9	10	M F and O	15	Farmer
	770	Zavitz, George O.	s e qr 8	10	M F and O	15	Farmer
	J772	Zavitz, Elwood M.	n hf 8 and o p	10	M F and O	15	Farmer
	J852	Zavitz, Eugene.	n pt 9	11	M F and O	15	Farmer
	J921	Zavitz, Albert	s hf 9	12	M F and O	27	Farmer
	J1016	Zavitz, Jonah	s hf 9	13	M F and O	27	Farmer

PART II.--Persons Entitled to Vote at Municipal Elections ONLY.

828	Barclay, Annie.	s w pt 8	12	Owner	8	Widow
777	Cameron, Donald.	n hf 11	10	Owner	3	Gentlem'n
622	Campbell, Peter A.	s e qr 10	8	Owner	43	Carpenter
711	Carmichael, Marg't H.	s hf 11 and o p	9	Owner	15	Widow
519	Carmichael, Isabella.	n hf 11 and o p	7	Owner	21	Widow
612	Cutler, Mrs Carrie.	s e pt 8 and o p	9	Owner	3	Widow
1031	Gray, Arch	pt n hf 13	13	Owner	34	Tailor
926	Harrison, Bremmer.	n w qr 10	12	Owner	35	Laborer

Polling Sub Division No. 4.

Jur.	No. on Roll.	NAME.	LOT.	Concession or Street.	Other Description.	P.O.	Occupation
	853	Lamont, Ellen	10	11	Owner	15	Widow
	697	Marsh, Cynthia	pt s pt 7	9	Owner	15	Widow
	626	McIver, Wm	pt s pt 13	8	Owner	25	Farmer
	687	McKay, Ann S.	pt s pt 7	9	Owner	15	Widow
	780	Quirrie, James	s hf 12	10	Joint O	28	Farmer
	766	Salsbury, Margaret	s e qr 7	10	Owner	15	Widow
	449	Sinclair, Betsy	e hf 7 and o p	6	Owner	4	Widow
	1029	Stewart, Mrs Arch	s hf 13	13	Owner	8	Widow
	1030	Stewart, Alex D.	s hf 13	13	Owner	8	Student
	599	Wood, Lillie	n e pt 7 and o p	8	Owner	15	Widow
	755	Zavitz, Christie Ann	n hf 7	10	Owner	7	Widow

PART III.—Persons Entitled to Vote at Elections to the Legislative Assembly ONLY.

	715	Briggs, Joseph	12	9	M F	21	Laborer
	781	Cameron, Lachlin	s hf 12	10	M F	21	Laborer
	514	Crapp, John	s hf 10	7	M F	21	Laborer
	524	Draper, Wm A.	s hf 13	7	M F	21	Laborer

Polling Sub-Division No. 4.

jur.	No. on Roll.	NAME.	LOT.	Concession or Street.	Other Description.	P.O.	Occupation
	465	Fletcher, Arch R.	hf 11	6	M F	21	Laborer
	710	Fletcher, Samuel.	hf 11	9	M F	15	Laborer
	623	Fonger, Alfred.	s e qr 10	8	M F and T.	21	Laborer
	598	Gray, Isaac	s hf 7	8	M F	7	Laborer
	784	Grundy, Henry.	n hf 13	10	M F	21	Laborer
	860	Harris, Joseph.	n hf 13	11	M F	21	Laborer
	785	Harrison, Franklin.	n hf 13	10	M F	21	Laborer
	529	Haytal, James.	n e qr 14	7	M F	21	Laborer
	634	Johnston, Alex.	pt s hf 13	8	M F	21	Laborer
	699	Livingston, Arch sr	s w pt 8	9	M F and H.	15	Laborer
	700	Livingston, Thomas.	s pt 8	9	M F	15	Laborer
	701	Livingston, Arch jr.	s pt 8	9	M F	15	Laborer
	638	Long, James.	n hf 14	8	M F	21	Laborer
	704	Mardlin, Thomas.	9	9	M F	15	Laborer
	453	Mearns, George.	s hf 8	6	M F	4	Laborer
	617	McDonald, David.	s w qr 9	8	M F	15	Sc Teach
	864	McEachran, John M.	n hf 14	11	M F	21	Sc Teach
	1020	McGugan, Arch.	s hf 10	13	M F	27	Farmer

Polling Sub-Division No. 4.

Jur. No. on Roll.	NAME.	LOT.	Concession or Street.	Other Description.	P.O.	Occupation
779	McRury, Arch.	n hf 1210	M F21	Laborer
782	Stimel, Johns hf 1219	M F21	Laborer
1039	Thornton, William	..n hf 1413	M F31	Laborer
774	Wright, George	..n hf 810	M F15	Laborer
685	Zavitz, Ambrose	..s w cor 79	M F15	Gentlem'n

Compr
sh

PART

Jur. No.
Roll
J888

742

J814

J802

J816

J951

J644

J724

J726

J797

J798

J725

Polling Sub-Division No. 5,

Comprising the north half of Lots No. 15 to the Townline between the Townships of London and Lobo, inclusive, in the 6th Concession, the whole of Lots Nos. 15 to the Townline between the Townships of Lobo and London, inclusive, in the 7th, 8th, 9th, 10th, 11th, 12th and 13th Concessions.

PART I.—Persons Entitled to Vote at BOTH Municipal Elections and Elections to the Legislative Assembly.

Jur. No. on Roll.	NAME.	LOT.	Concession or Street.	Other Description.	P.O.	Occupation.
J888	Armstrong, Thomas.	22	11	M F and O.	24	Farmer
742	Attwood, Adolph C.	s hf 20 and o p	9	M F and O.	20	Farmer
J814	Avery, George.	s hf s hf 20	10	M F and T.	24	Farmer
J802	Barclay, Arthur.	n pt s hf 18 and o p	10	M F and O.	24	Merchant
J816	Boland, Wm H.	s pt 22	10	M F and T.	24	Farmer
J951	Brown, Geo R.	s hf 18 and o p	12	M F and T.	24	Farmer
J644	Cameron, John D.	n hf 17	8	M F and O.	21	Farmer
J724	Campbell, Duncan J.	n pt 16 and o p	9	M F & J O.	24	Farmer
J726	Campbell, John H.	n pt 16	9	M F and O.	24	Farmer
J797	Campbell, John.	n e qr 15	10	M F and O.	24	Farmer
J798	Campbell, Duncan W.	s e qr 16 and o p	9	M F and O.	24	Farmer
J725	Campbell, James F.	n pt 16 and o p	9	M F and O.	24	Farmer

Polling Sub-Division No. 5.

Jur.	No. on Roll.	NAME.	LOT.	Concession or Street.	Other Description.	P.O.	Occupation
J723		Campbell, James..	n pt 16	9	M F and O.	24.	Farmer
J731		Campbell, Alexander..	s hf 17	9	M F and O.	24.	Farmer
J732		Campbell, John A. s	hf 17	9	M F and O.	24.	Farmer
J727		Campbell, Peter..	n hf 17	9	M F and O.	24.	Farmer
J729		Campbell, Arch..	s pt n hf 17 and o p.	9	M F and T.	24.	Farmer
J730		Campbell, Wm..	s hf 17 and o p	10.	M F and T.	24.	Farmer
736		Campbell, Robert..	n hf 18	9	M F and O.	24.	Farmer
J539		Caverhill, Wm H. e	pt 17 and o p.	7	M F and O.	20.	Farmer
J541		Caverhill, Thos W..	n hf 18	7	M F and O.	20.	Farmer
J542		Caverhill, Wm A. n	pt gore 19 and o p.	7	M F and O.	20.	Farmer
J544		Caverhill, Adam T..	s hf 18	7	M F and O.	20.	Farmer
J643		Caverhill, Edward T..	s hf 17	8	M F and O.	21.	Farmer
883		Charlton, Wm..	s hf 21 and o p.	11.	M F and O.	24.	Gentleman
J799		Charlton, Albert..	n hf 17 and o p	10.	M F and O.	24.	Farmer
J884		Charlton, George..	s hf 20	11.	M F and O.	24.	Farmer
J885		Charlton, Edward W..	s hf 21	11.	M F and O.	24.	Farmer
J810		Cochrane, John..	n pt 20 and o p	10.	M F and O.	24.	Farmer
J806		Cochrane, Hugh..	s e qr 19 and o p.	10.	M F and O.	24.	Farmer
J807		Cochrane, Wm G..	n pt 20 and o p.	10.	M F and O.	24.	Farmer
J1046		Dewar, John M..	n hf 16	13.	M F and O.	26.	Farmer
J649		Dixon, Johnw pt 19	8	M F and O.	20.	Farmer
J954		Drought, William	.n w qr 19	12.	M F and T.	26.	Drover

Polling Sub-Division No. 5.

Occupation	Jur. No. on Roll.	NAME.	LOT.	Concession or Street.	Other Description.	P.O.	Occupation
Farmer	J535	Forbes, Duncan	hf 16	7	M F and T.	20	Farmer
Farmer	J720	Forbes, John	hf 15	9	M F & J O.	24	Farmer
Farmer	J721	Forbes, James A.	hf 15	9	M F & J O.	24	Farmer
Farmer	J647	Fraser, Donald	hf 18 and o p	8	M F & J O.	20	Farmer
Farmer	J648	Fraser, Arch	hf 18 and o p	8	M F & J O.	20	Farmer
Farmer	J943	Gibson, Isaac	hf 15 and o p	12	M F and T.	24	Farmer
Farmer	J941	Gibson, Richard	hf 15 and o p	12	M F & J T.	24	Farmer
Farmer	J940	Gibson, John G.	hf 15 and o p	12	M F & J T.	24	Farmer
Farmer	J942	Gibson, Thos	hf 15 and o p	12	M F & J T.	24	Farmer
Farmer	J870	Gibson, Jeremiah	n w qr 16	11	M F and T.	24	Farmer
Farmer	868	Gibson, Thos	n e pt 15	11	M F and O.	24	Farmer
Farmer	J869	Gibson, Wm	n e pt 15	11	M F and T.	24	Farmer
Gentleman	J801	Gilbert, David	hf 17 and o p	10	M F and O.	24	Farmer
Farmer	J1042	Gillis, Jonn N.	e qr 15	13	M F and O.	24	Farmer
Farmer	J948	Granger, Edward	hf 17	12	M F and O.	24	Farmer
Farmer	J790	Goddard, Job	hf 15	10	M F and T.	24	Farmer
Farmer	J639	Graham, Donald L.	hf 15 and o p	8	M F and O.	21	Farmer
Farmer	J873	Griffith, Nathan	hf and n w qr 17	11	M F and O.	24	Farmer
Farmer	J874	Griffith, Thos	hf and n w qr 17	11	M F and O.	24	Farmer
Farmer	J875	Griffith, George	hf and n w qr 17	11	M F and O.	24	Farmer

Polling Sub-Division No. 5.

Jur.	No. on Roll.	NAME.	LOT.	Concession or Street.	Other Description.	P.O.	Occupation
	733	Hayes, Thos.	hf 18	9	M F and O.	24	Farmer
J734		Hayes, John	hf 18	9	M F and T.	24	Farmer
J815		Headley, Wm	hf 21 and p	10	M F and O.	24	Farmer
J789		Henderson, Chas.	hf 16 and o p	10	M F and O.	24	Farmer
J640		Johnson, Donald	hf 16	8	M F and O.	21	Farmer
J641		Johnson, Arch	n w pt 16	8	M F and O.	21	Farmer
J1058		Johnston, Alex	n hf 20	13	M F and O.	36	Laborer
J818		Knight, John	n hf 21	10	M F and T.	29	Farmer
J657		Lawrence, Samuel	pt gore 20	8	M F and T	20	Minister
J871		Lynn, Henry	hf 16	11	M F and O.	24	Farmer
J969		Martin, Wm E	hf 21 and o p	12	M F and O.	29	Farmer
J970		Martin, Thos H	hf 23	12	M F and O.	24	Farmer
804		Miller, David	s pt n hf 18 and o p	10	M F and O.	24	Gentlem'n
803		Munce, Samuel	n pt s hf 18	10	M F and T.	24	Blacks'ith
650		McBean, Wm sr	e pt 19	8	M F and O	20	Farmer
J651		McBean, Wm jr	e pt 19	8	M F & J O	20	Farmer
J652		McBean, Duncan	e pt 19	8	M F & J O	20	Farmer
J1055		McClurg, Henry	n e qr 16 and o p	11	M F and O	36	Farmer
J1063		McClurg, Wm	n hf 22	13	M F and O	36	Farmer

Jur. No. Rol.
J1064

1051

J1053

J1052

J1052

1060

J1061

1036

J1055

J1033

J1033

J1063

737

J733

J744

J888

53

J10

J75

J7

J7

J7

Polling Sub-Division No. 5.

Jun.	No. on Roll.	NAME.	LOT.	Concession or Street.	Other Description.	P.O.	Occupation
J1064		McClurg, John A. . n	hf 22	13	M F and O .	36 .	Farmer
	1051	McDougall, Allan . s	hf 16, 17	13	M F and O .	24 .	Farmer
J1053		McDougall, Neil . s	hf 16, 17	13	M F and O .	24 .	Farmer
J1052		McDougall, John . s	hf 16, 17	13	M F and O .	24 .	Farmer
J1052½		McDougall, Donald A. . s	hf 16, 17	13	M F and O .	24 .	Farmer
	1060	McEwen, Donald . s	hf 21	13	M F and O .	36 .	Farmer
J1061		McEwen, John D. . s	hf 21	13	M F and T .	36 .	Farmer
	1036	McEwen, John . n	hf 15, 14 and o p	13	M F and O .	31 .	Farmer
J1059		McEwen, Hugh J. . n	hf 21	13	M F and T .	36 .	Farmer
J1037		McEwen, John J. . n	hf 15, 14	13	M F and O .	31 .	Farmer
J1038		McEwen, Peter . n	hf 15 and 14	13	M F and O .	31 .	Farmer
J1062		McEwen, Hugh D. . s	hf 22	13	M F and O .	36 .	Farmer
	737	McIntosh, John . s	hf 19	9	M F and O .	20 .	Farmer
J738		McIntosh, William . s	hf 19	9	M F and O .	20 .	Farmer
J740		McIntosh, William . n	e qr 19 and o p	9	M F and O .	24 .	Farmer
J880		McKeichan, James . n	hf 19	11	M F and T .	24 .	Farmer
	534	McIntyre, Peter . s	hf 16	7	M F and O .	12 .	Gentlem'n
J1047		McLachlan, John . n	hf 17	13	M F and O .	31 .	Farmer
J792		McLellan, John . n	hf n hf 16 and o p	12	M F and O .	24 .	Farmer
J793		McLellan, John A. . w	hf 15 and o p	12	M F and O .	24 .	Farmer
J795		McLellan, Augustine . n	hf 15 and o p	12	M F and O .	24 .	Farmer
J794		McLellan, Donald A. . n	hf 15 and o p	12	M F and O .	24 .	Farmer

Polling Sub Division No. 5.

Jur.	No. on Roll.	NAME.	LOT.	Concession or Street.	Other Description.	P.O.	Occupation
	480	McNeil, Alex.	n hf 17	6	M F and O.	20.	Farmer
J280		McNeil, John	n hf 17	6	M F and T.	20.	Farmer
J965		Noyes, John A	n hf 20	12	M F and T.	24.	Farmer
J966		Noyes, Wm E	n hf 20	12	M F and T.	24.	Farmer
J967		Noyes, Thos H.	n hf 20	12	M F and T.	24.	Farmer
J968		Noyes, Edwin	n hf 20	12	M F and T.	24.	Farmer
J808		Oliver, John	n hf 19 and o p	10	M F & J O.	24.	Farmer
J809		Oliver, Wm jr.	n hf 19 and o p	10	M F and O.	24.	Farmer
	977	O'Neil, Bailey	n pt gore 24	12	M F and O.	37.	Farmer
J964		Parker, Thomas	n hf 20	12	M F and O.	26.	Laborer
J949		Parker, John	n hf 18	12	M F and O.	26.	Miller
J958		Patterson, James	s hf 20	12	M F and O.	24.	Farmer
J805		Petherham, John B.	pt n pt s hf 18	10	M F and O.	24.	Miller
1068		Phillips, Daniel	n w qr 23	13	M F and O.	19.	Farmer
J1069		Phillips, David E.	n w qr 23	13	M F and T.	36.	Farmer
J1070		Phillips, Joseph	n e qr 23 and o p	13	M F and O.	36.	Farmer
J656		Robson, Wm T	pt s pt gore 20	8	M F and T.	20.	M D
	477	Robson, George	n hf 15 and 16	6	M F and O.	4.	Farmer
J478		Robson, George E.	n hf 15 and 16	6	M F and O.	4.	Farmer

Jur.	No. on Roll.
	972 E
	973 I
J1048	
J1049	
J917	
J1067	
530	
J531	
J533	
J963	
J88	
J88	
J97	
J10	
1	
J1	
J5	
J	
J	

Polling Sub-Division No. 5.

Jur.	No. on Roll.	NAME.	LOT.	Concession or Street.	Other Description.	P.O.	Occupation
	972	Robson, Robert.	n hf 22	12	M F and O.	36.	Farmer.
	973	Robson, Joseph H.	n hf 22	12	M F & F S.	36.	Farmer
J	1048	Robson, George C.	18	13	M F and O.	24.	Farmer
J	1049	Robson, J Norman.	18	13	M F and O.	24.	Farmer
J	917	Ross, John	s hf 23 and o p.	13	M F & T O.	36.	Farmer
J	1067	Ross, John R.	s hf 23	13	M F and T.	36.	Farmer
	530	Shanklin, George.	s hf 15 and o p	7	M F and O.	21	Farmer
	531	Shanklin, Holmes.	n hf 15	7	M F and O.	21.	Farmer
	533	Shanklin, Thomas.	n hf 16	7	M F and O.	21.	Farmer
J	963	Shiple, Thomas.	w hf 21	12	M F and O.	24.	Farmer
J	886	Shiple, John T.	n hf 21	11	M F and O.	24.	Farmer
J	887	Shiple, Chas A.	n hf 21	11	M F and O.	24.	Farmer
J	975	Shiple, Albert L.	n hf 23	12	M F and O.	11.	Sta Ag't
J	1071	Siddall, John W.	w hf 24	13	M F and O.	36.	Farmer
	1072	Siddall, Joseph.	pt 24	13	M F and O.	37.	Farmer
J	1073	Siddall, Robt H.	pt 25	13	M F and O.	37.	Farmer
J	538	Simpson, John	s w pt 17	7	M F and O.	21.	Farmer
J	537	Simpson, George.	w pt 17	7	M F and T.	21.	Farmer
J	536	Simpson, Wm jr.	w pt 17	7	M F and O.	20.	Farmer
J	866	Sinker, Alfred.	s pt 15 and o p	11	M F and O.	24.	Farmer
J	718	Smith, John	s hf 15	9	M F and O.	21	Farmer
J	878	Smith, David.	n hf 18	11	M F and O.	36.	Farmer

Polling Sub-Division No. 5.

Jur.	No. on Roll.	NAME.	LOT.	Concession or Street.	Other Description.	P.O.	Occupation
	944	Squires, Richard	hf 16 and o p	12	M F and O	24	Farmer
J947		Squires, Wm	s w qr 17	12	M F and O	24	Farmer
J945		Squires, John	s e qr 17 and o p	12	M F and O	24	Farmer
J946		Squires, Rich jr	s hf 16 and o p	12	M F and O	24	Farmer
	877	Stewart, Arch	n hf 18	11	M F and O	26	Farmer
J882		Thirlwall, Arthur I	n hf 20	11	M F and O	24	Farmer
	955	Thirlwall, Arthur	e hf 19 and o p	12	M F, O & J O	24	Farmer
	956	Thirlwall, Isaac	s hf 22 and o p	12	M F & J O	24	Farmer
J957		Thirlwall, Christopher	e hf 19 and o p	12	M F and O	24	Farmer
	741	Tindley, Richard	n e qr 20	9	M F and O	24	Farmer
J952		Walker, Chrisopher	n w qr 19	12	M F and O	26	Post Mast
J953		Walker, Joseph	n w qr 19	12	M F and O	24	Farmer
1057		Walker, Wm H	n hf 20 and o p	13	M F and T	26	Farmer
	543	Wood, William	s pt 19	7	M F and O	20	Farmer

PART II. - Persons Entitled to Vote at Municipal Elections ONLY.

1043	Barr, Mary	n e qr 11	13	Owner	27	Spinster
1044	Barr, Kate	n e qr 11	13	Owner	27	Spinster
819½	Brettell, Thos	n pt 22	10	Owner	29	Farmer
950	Brown, Thomas	s hf 18 and o p	12	Owner	3	Gentlem'n

Polling Sub-Division No. 5.

Jur. No. on Roll.	NAME.	LOT.	Concession or Street.	Other Description.	P.O.	Occupation.
820	Brettell, George	n pt 22	10	Owner	29	Farmer
821	Brettell, Charles	n pt 22	10	Owner	29	Farmer
485	Battie, Ann	gore 18 and o p	6	Owner	20	Widow
813	Calvert, Edward C.	s pt 20	10	Tenant	29	Farmer
812	Calvert, Robt L.	s pt 20	10	Tenant	29	Farmer
863	Cameron, Colin	n w qr 15 and o p	11	Owner	30	Brakeman
728	Campbell, Catharine	pt 17	9	Owner	24	Spinster
876	Charlton, Edward	s w qr 17	11	Owner	29	Farmer
646	Fraser, Mary	18	8	Joint O	20	Widow
1040	Gillis, Catharine	s w qr 15	13	Owner	24	Widow
811	Hord, James	s hf of s hf 20	10	Owner	29	Farmer
1056	Marshall, Finley	n hf 19	13	Owner	3	Clerk
971	Martin, John G.	s hf 23	12	Owner	29	Farmer
1054	McClurg, Arthur	s hf 19	13	Owner	3	Tea Ag't
817	Nichols, Francis	n hf 21	10	Owner	37	Farmer
976	O'Neil, Sophia	n pt 24	12	Owner	37	Widow
879	Parker, Wm	n hf 19	11	Owner	37	Laborer

Jur.	No. on Roll.	NAME.	LOT.	Concession or Street.	Other Description.	P.O.	Occupation
	979	Richards, James . . s	pt gore 24	12	Owner	37	Wag mak
	974	Robson, Wm B . . n	hf 23	12	Owner	37	Farmer
	655	Robson, John W . . pt	20	8	Owner	20	Farmer
	653	Robson, Arthur . . pt	20	8	Owner	20	Farmer
	654	Robson, Lionel . . pt	20	8	Owner	20	Farmer
³¹	743	Scott, Thomas B . . n	pt 21	9	Owner	20	Farmer
	962	Shipley, Deborah . w	hf 21	12	Owner	24	Widow
	939	Wilson, George . . s	hf 15 and o p	12	Owner	8	Gentlem'n

PART III.—Persons Entitled to Vote at Elections to the Legislative Assembly ONLY.

	959	Andrews, John . . s	hf 20	12	M F	24	Laborer
	722	Dowie, Hugh n	hf 14	9	M F	24	Laborer
	645	Empey, John n	hf 17	8	M F	21	Sc Teach
	881	Gee, Walter s	hf 19	11	M F and H	24	Laborer
	739	Goodhall, Robert . . s	hf s hf 20	10	M F	20	Laborer
	1050	Gray, Duncan	18	13	M F	24	Laborer
	1074	Hawke, Benjamin . . e	hf 24	13	M F	37	Miller

Polling Sub-Division No. 5.

Jur.	No. on Roll.	NAME.	LOT.	Concession or Street.	Other Description.	P.O.	Occupation
	1076	Laying, Michael..	2513.....	M F and O.	26..	Laborer
	1058½	Lucer, Joseph ..	n hf 2013.....	M F.....	26..	Laborer
	819	Murcett, Abraham..	n hf 2110.....	M F.....	29..	Laborer
	796	McLellan, Nevin..	n w pt 1510.....	M F.....	24..	Farmer
	960	Nichol, Robert ..	s hf 2012.....	M F.....	24..	Laborer
	1075	Parrot, Reginald A..	2413..	M F.....	37..	Laborer
	800	Robinson, Albert..	n w pt 1810.....	M F.....	24..	Laborer
	980	Root, Edward....	2412.....	M F and H	37..	Laborer
	719	Smith, Peter	s hf 159 ..	M F.....	21..	Laborer
	1041	Sinclair, Daniel ..	s w qr 1513.....	M F.....	24..	Laborer
	872	Smith, George....	s hf 1711.....	M F.....	20..	Laborer
	540	Wallis, Robert B..	e pt 177 ..	M F.....	20..	Laborer
	978	Ward, George....	2412.....	M F.....	37..	Laborer
	735	Wilson, Oliver....	189 ..	M F.....	24..	Laborer

523 of the within named voters are qualified to serve on Juries.

I, E. R. BARCLAY, Clerk of the Municipality of the Township of Lobo, in the County of Middlesex, do hereby certify that parts one and three of the within list constitute a correct list for the year 1897, of all persons appearing by the last revised Assessment roll of the said Municipality to be entitled to vote at elections for members of the Legislative Assembly; and that parts one and two constitute a correct list for said year of all persons appearing by the said roll to be entitled to vote at Municipal Elections in said Municipality, and I hereby call upon all electors to examine the said list, and if any omissions or other errors are perceived therein, to take immediate proceedings to have the said errors corrected according to law.

Dated the 11th day of August, 1897.

E. R. BARCLAY,
Clerk of the Township of Lobo,
Poplar Hill P. O.

CA401608Q18X8V54
DE

o, in
within
the last
ns for
cor-
vote
ers to
n, to

bo,

CA401603Q18X8V54

DE

EXTRACT FROM THE VOTERS' LISTS ACTS, 1889.

The Sheriff shall, immediately upon the receipt of his copies, cause one of them to be posted up in a conspicuous place in the Court House; the Clerk of the Peace, upon the receipt of his copies, shall cause one of them to be posted in a conspicuous place in his office; every Public or Separate School Head Master or Mistress shall in like manner post up one of his or her copies on the door of the School House, and every Postmaster shall post up one of his copies in his Post Office.—SECTION 8.

