

**CIHM  
Microfiche  
Series  
(Monographs)**

**ICMH  
Collection de  
microfiches  
(monographies)**



**Canadian Institute for Historical Microreproductions / Institut canadien de microreproductions historiques**

**© 1994**

Technical and Bibliographic Notes / Notes techniques et bibliographiques

The Institute has attempted to obtain the best original copy available for filming. Features of this copy which may be bibliographically unique, which may alter any of the images in the reproduction, or which may significantly change the usual method of filming, are checked below.

L'Institut a microfilmé le meilleur exemplaire qu'il lui a été possible de se procurer. Les détails de cet exemplaire qui ont peut-être uniques du point de vue bibliographique, qui peuvent modifier une image reproduite, ou qui peuvent exiger une modification dans la méthode normale de filmage sont indiqués ci-dessous.

Coloured covers/  
Couverture de couleur

Coloured pages/  
Pages de couleur

Covers damaged/  
Couverture endommagée

Pages damaged/  
Pages endommagées

Covers restored and/or laminated/  
Couverture restaurée et/ou pelliculée

Pages restored and/or laminated/  
Pages restaurées et/ou pelliculées

Cover title missing/  
Le titre de couverture manque

Pages discoloured, stained or foxed/  
Pages décolorées, tachetées ou piquées

Coloured maps/  
Cartes géographiques en couleur

Pages detached/  
Pages détachées

Coloured ink (i.e. other than blue or black)/  
Encre de couleur (i.e. autre que bleue ou noire)

Showthrough/  
Transparence

Coloured plates and/or illustrations/  
Planches et/ou illustrations en couleur

Quality of print varies/  
Qualité inégale de l'impression

Bound with other material/  
Relié avec d'autres documents

Continuous pagination/  
Pagination continue

Tight binding may cause shadows or distortion along interior margin/  
La reliure serrée peut causer de l'ombre ou de la distorsion le long de la marge intérieure

Includes index(es)/  
Comprend un (des) index

Title on header taken from: /  
Le titre de l'en-tête provient:

Blank leaves added during restoration may appear within the text. Whenever possible, these have been omitted from filming/  
Il se peut que certaines pages blanches ajoutées lors d'une restauration apparaissent dans le texte, mais, lorsque cela était possible, ces pages n'ont pas été filmées.

Title page of issue/  
Page de titre de la livraison

Caption of issue/  
Titre de départ de la livraison

Masthead/  
Générique (périodiques) de la livraison

Additional comments: /  
Commentaires supplémentaires:

This item is filmed at the reduction ratio checked below /  
Ce document est filmé au taux de réduction indiqué ci-dessous.

10X	12X	14X	16X	18X	20X	22X	24X	26X	28X	30X	32X
				✓							

The copy filmed here has been reproduced thanks to the generosity of:

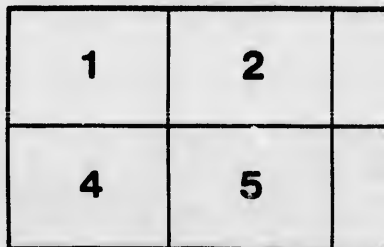
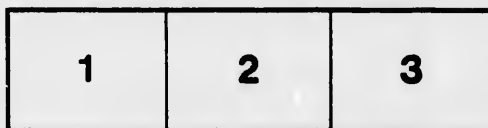
Hamilton Public Library

The images appearing here are the best quality possible considering the condition and legibility of the original copy and in keeping with the filming contract specifications.

Original copies in printed paper covers are filmed beginning with the front cover and ending on the last page with a printed or illustrated impression, or the back cover when appropriate. All other original copies are filmed beginning on the first page with a printed or illustrated impression, and ending on the last page with a printed or illustrated impression.

The last recorded frame on each microfiche shall contain the symbol  $\rightarrow$  (meaning "CONTINUED"), or the symbol  $\nabla$  (meaning "END"), whichever applies.

Maps, plates, charts, etc., may be filmed at different reduction ratios. Those too large to be entirely included in one exposure are filmed beginning in the upper left hand corner, left to right and top to bottom, as many frames as required. The following diagrams illustrate the method:



L'exem  
généro

Les im  
plus g  
de la n  
confor  
filmag

Les ex  
papier  
par le  
dernièr  
d'impr  
plat, s  
origina  
premièr  
d'impr  
la dern  
empre

Un des  
dernièr  
cas: le  
symbo

Les ca  
filmés  
Lorsqu  
reprod  
de l'an  
et de h  
d'imag  
illustre

and thanks

L'exemplaire filmé fut reproduit grâce à la générosité de:

Hamilton Public Library

quality  
ibility  
che

Les images suivantes ont été reproduites avec le plus grand soin, compte tenu de la condition et de la netteté de l'exemplaire filmé, et en conformité avec les conditions du contrat de filmage.

e filmed  
g on  
impres-  
. All  
y on the  
pres-  
printed

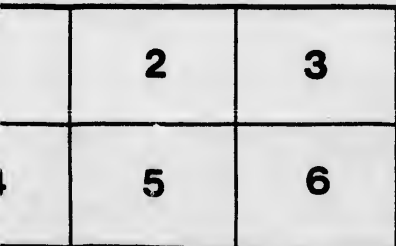
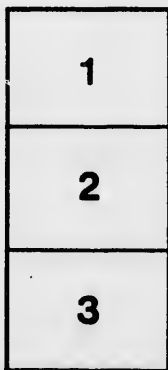
Les exemplaires originaux dont la couverture en papier est imprimée sont filmés en commençant par le premier plat et en terminant soit par la dernière page qui comporte une empreinte d'impression ou d'illustration, soit par le second plat, selon le cas. Tous les autres exemplaires originaux sont filmés en commençant par la première page qui comporte une empreinte d'impression ou d'illustration et en terminant par la dernière page qui comporte une telle empreinte.

he  
CON-  
ND"),

Un des symboles suivants apparaîtra sur la dernière image de chaque microfiche, selon le cas: le symbole  $\rightarrow$  signifie "A SUIVRE", le symbole  $\nabla$  signifie "FIN".

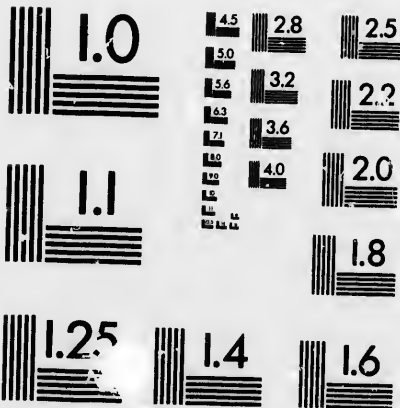
at  
to be  
ed  
ft to  
as  
e the

Les cartes, planches, tableaux, etc., peuvent être filmés à des taux de réduction différents. Lorsque le document est trop grand pour être reproduit en un seul cliché, il est filmé à partir de l'angle supérieur gauche, de gauche à droite, et de haut en bas, en prenant le nombre d'images nécessaire. Les diagrammes suivants illustrent la méthode.



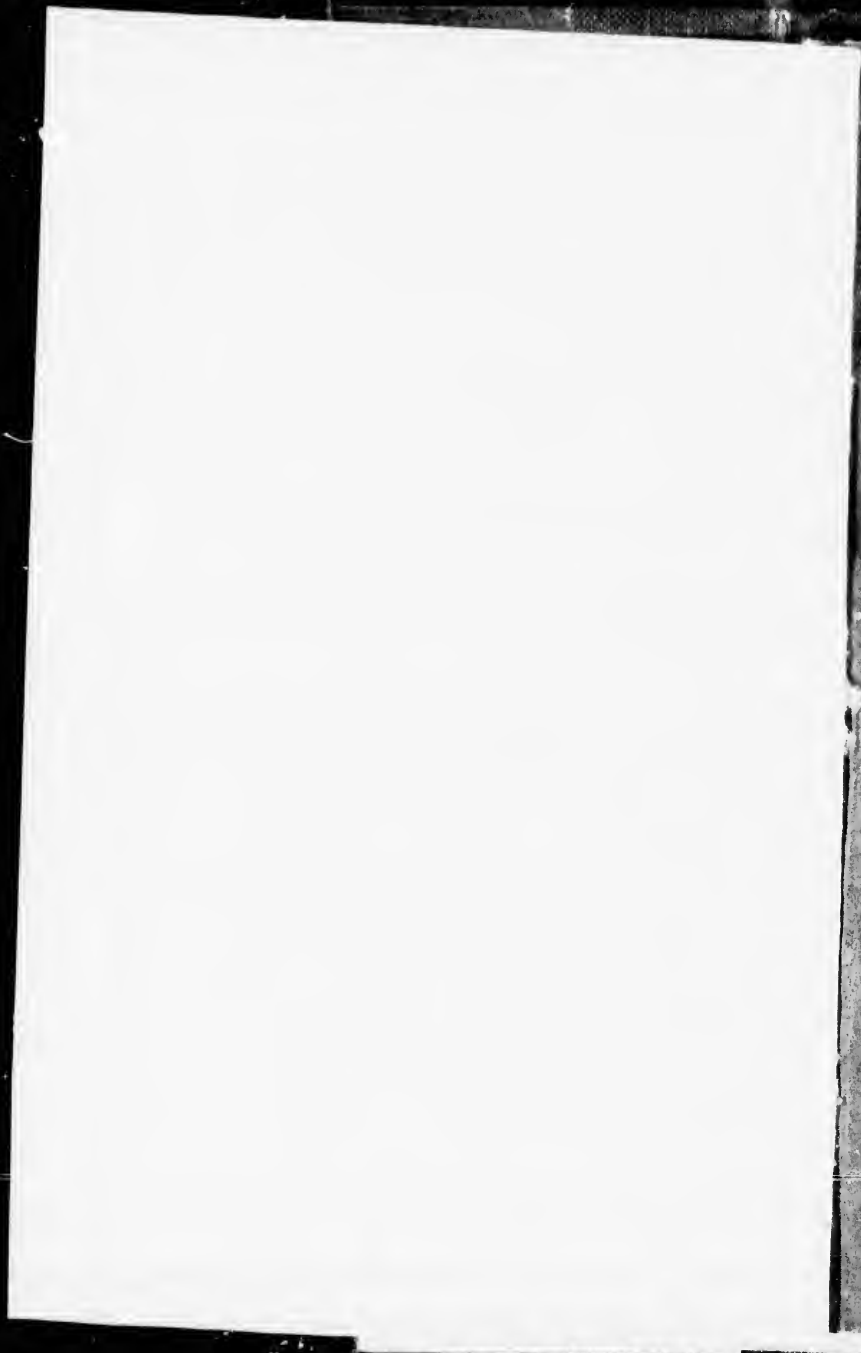
# MICROCOPY RESOLUTION TEST CHART

(ANSI and ISO TEST CHART No. 2)



**APPLIED IMAGE Inc**

1653 East Main Street  
Rochester, New York 14609 USA  
(716) 482 - 0300 - Phone  
(716) 288 - 5989 - Fax



1864.

J. P. WALKER & CO.

GENERAL

**HARDWARE**

MERCHANTS,

KING STREET,

HAMILTON, C. W.

HAMILTON, C. W.

DONNELLY & LAWSON, PRINTERS AND ENGR

O  
We hand you  
which we hope you

We keep con  
ment of the Good  
stock well supplied

We trust you  
City, we can offer  
we are confident

Our stock of  
nies, Wicks, &c.,  
extremely low price

Orders by letter

HAMILTON, January

cop. 1



C I R C U L A R .  

---

We hand you herewith a Catalogue of Hardware, &c., which we hope you will find useful in making out your orders.

We keep constantly on hand a large and varied assortment of the Goods mentioned, and shall always have our stock well supplied.

We trust you will call upon us when you are next in the City, we can offer you Goods at such prices and terms as we are confident will induce you to favor us with your orders.

Our stock of Coal Oil, Coal Oil Lamps, Brushes, Chimneys, Wicks, &c., &c., is very complete, and will be sold at extremely low prices, either for cash or on time.

Orders by letter will receive our best attention.

Your obedient servants,

J. P. WALKER & .

HAMILTON, January, 1861.

*cop. 1*

100 22 24 260  
 16 x 20 25 265  
 24 x 36 17 50 16

98	20
92	18
90	<u>168</u>
<u>280</u>	21
6	<u>378</u>
<u>1680</u>	378
<del>840</del>	<u>756</u>
<del>2520</del>	

98	40
92	29
90	<u>260</u>
<u>190</u>	30
190	<u>1160</u>
<u>380</u>	1160
50	<u>2320</u>
<u>4306</u>	456
<u>2580</u>	3076
	<u>2580</u>
	496

ANVI  
 ANCH  
 AXLE  
 AXES  
 "  
 "  
 "  
 ADZES  
 AUGER  
 AUGER  
 AWLS  
 "  
 "  
 "  
 "  
 AWL

ANVILS.

ANCHORS.

AXLE TREES.

AXES—Broad.

“ Chopping.

“ Handled.

“ Bench.

ADZES.

AUGERS.

AUGER—Bits.

AWLS—Sewing.

“ Pegging,

“ do patent.

“ Brad.

“ Saddlers.

AWL HANDLES.

2.61  
2.65  
52 11.  
0  
8  
8  
5  
4  
5-6  
40  
29  
60  
0  
60  
60  
20  
756  
076  
58  
496

J. P. WALKER & Co.

BORAX.

BRASS—Bar.

“ Sheet and Roll.

BRASS BATTERY KETTLES.

BELTING—Leather.

“ India Rubber.

BLACKSMITH'S BELLOWS.

BELLOWS—Hand.

BENCH SCREWS—Wood and Iron.

BLACKSMITH'S TOOLS.

BOXES—Cash.

“ Patent Waggon.

BRUSHES—Ground Paint—Whitewash.

“ Sash Tools. Shoe.

“ Varnish. Scrubbing.

“ Cloth. Stove.

“ Hat.

“ Hair.

“ Shaving.

“ Nail.

“ Tooth.

BELLS—Cow.

“ House and Sheep.

“ Tea.

“ Hand.

## HAMILTON.

BELLS—Sleigh.

BUTTS—"Clark's Tariff" and Best.

" " " " Broad.

" Parliament Loose Joint.

" Pressed Back Flaps.

" " Table Hinges.

" Wrought Table Hinges.

" American Blind Hinges.

BREAST SNAPS AND REIN SNAPS.

BALANCES.

BRADS.

BLIND CORD—Green, Blue, Crimson.

BELL STAPLES.

BLIND FURNITURE.

BUTTER TASTERS.

BOLTS—Round, Square, Flat.

" Brass Flush.

" Carriage.

" Tire.

" Coach.

BELLOWS—Pipes.

" Nails.

BLACK LEAD.

BUTTONS—Japanned Door.

" Japanned Door, on Plates.

- BITS—Centre, Auger and others.  
 BRACES AND BITS.  
 BEVILS—Sliding T.  
 BED KEYS.  
 BRASS COCKS.  
   “ Stair Rods.  
   “ Curtain Bands.  
   “     “ Pole Ends.  
   “     “ Pins.  
   “ Door Handles.  
   “ Door Latches.  
   “ Norfolk Latches.  
   “ Cornice Poles.  
   “ Window Cornices.  
   “ Butts.  
   “ Shutter Knobs.  
   “ Cupboard Turns.  
   “ Head Nails.  
   “     “ Screws.  
   “ Screw Rings.  
   “     “ Hooks.  
   “ Lamp Hooks.  
   “ Flush Bolts.  
   “ Door Buttons.  
   “ Hooks and Eyes.

BRA

“

“

“

“

“

“

“

“

“

“

“

“

“

“

“

“

“

“

“

“

“

“

“

“

**BRASS Curtain Rings.**

- “ Thread Escutcheons.
- “ Plate Escutcheons.
- “ Socket Castors.
- “ Plate Castors.
- “ Rack Pullics.
- “ Roller Ends.
- “ Bell Cranks, to Drive, Side and End.
- “ “ Purchase.
- “ “ Leader.
- “ “ Pillar.
- “ Bell Pulls.
- “ Bell Levers.
- “ Hat and Coat Hooks.
- “ Hat Pins.
- “ Wardrobe Hooks.
- “ Chair Nails,
- “ Letter Plates.
- “ Tassel Hooks,
- “ Door Knockers.
- “ Cornice Rings.
- “ Pole Brackets.
- “ Pocket Compasses.
- “ Ferules for Fishing Rods.
- “ Ferules, for walking Sticks.

BRASS Jack Chain.		CHAIN
“ Sconces.		“
“ Sash Handles.		“
“ Stair Rod Eyes.		“
“ Cabin Hooks.		“
“ Curtain Hooks.		“
“ Pullies, Side.		“
“ “ Screw.		CHA
“ Window Lifters.		Size of
“ Sash Rollers.		Incl
“ Flush Rings.		3-
“ Handles.		1-
“ Table Fasteners.		5-
“ Air Vents.		3-
“ Corner Clips.		7-
“ Name Plates.		1-
“ Desk Hinges.		9-
“ Escutcheon Pins.		5-
“ Drapery Hooks.		11-
“ Paste Markers.		3-
“ Weights.		13-
		7-
		15-
	No	
	tioned.	
	added to	
	CANAD	
	CART I	
	CAST I	
	“	



## CHAINS—Short Link Coil.

- “ Trace.  
 “ Short Tug.  
 “ Halter.  
 “ Cow-ties.  
 “ Iron Jack.  
 “ Brass Jack.

## CHAIN CABLE—Size and Weight per Fathom, &amp;c.

Size of Chain.	Weight per Fathom.	Size of Chain.	Weight per Fathom.
Inches.	Pounds.	Inches.	Pounds.
3-16	$3\frac{1}{2}$	1	56
1-4	$4\frac{1}{2}$	1 1-16	62
5-16	$5\frac{1}{2}$	1 1-8	70
3-8	8	1 3-16	78
7-16	11	$1\frac{1}{4}$	86
1-2	14	1 5-16	96
9-16	18	$1\frac{3}{8}$	108
5-8	24	1 7-16	115
11-16	27	$1\frac{1}{2}$	125
3-4	30	$1\frac{5}{8}$	145
13-16	36	$1\frac{3}{4}$	155
7-8	42		
15-16	50		

NOTE.—The above weights are for chains of the exact size mentioned. Most chain is sold heavier, and about ten per cent. should be added to the above to ascertain the weight of the chain usually sold.

CANADA PLATES.

CART BOXES.

CAST IRON COOLERS.

“ CAULDRONS.

CHALK—White and Red.	CORK I
COOPER'S NAILS.	COCKS-
CURLED HAIR.	"
CORDAGE—Manilla, Deep Sea, Leading & Halter, 1 to 1½	"
"    Hemp, Deep-Sea, Leading Halter 1 to 1½	CHISEL
"    Bed Cords, Manilla.	"
"    "    Hemp.	"
"    Plough Lines, Manilla and Hemp.	"
"    Engine Packing.	"
COPPER—Bar, Ingot.	COAL—
"    Sheet.	CHEESE
CARDS—Wool.	COPYING
"    Horse.	COFFIN
CATTLE KNOBS.	"
COUNTER WEIGHING MACHINES.	"
CURRIER'S STONES AND KNIVES.	"
CARRIAGE SPRINGS.	"
CHALK LINE REELS.	"
CHAIR WEB.	"
CHAMOIS SKINS.	CANISTI
CHEST HANDLES.	CUTLER
CURRY COMBS.	"
CRUETS—Japanned.	"
"    B. Metal.	"
CASTORS—Brass, Iron, Bed and Table.	"
CANDLESTICKS—Japanned and Brass.	"
"    Pillar and Chamber.	"
CORK SCREWS.	"
CORNICES WINDOW.	"

## CORK DRAWERS.

## COCKS—Brass.

“ Pewter.

“ Wooden.

Halter, 1 to 1½

Halter 1 to 1½

## CHISELS—Cast Steel, firmer,

“ Long Paring.

“ Socket.

“ Mortice.

“ Turning.

emp.

## COAL—Hods and Scoops.

## CHEESE TASTERS.

## COPYING PRESSES.

## COFFIN FURNITURE—in Sets.

“ Plates.

“ Handles.

“ Tacks.

“ Screws.

“ Hinges.

“ Ornaments.

## CANISTERS.

## CUTLERY—Table Knives and Forks.

“ Dessert.

“ Pen Knives.

“ Pocket Knives,

“ Razors.

“ Scissors.

“ Shears, Tailors’.

“ Butchers’ Knives.

“ Bread “

CUTLERY—Shoe Knives.

“ Mincing “

“ Oyster “

“ Desk “

“ Farrier's “

“ Pallet “

“ Putty “

“ Butter “

“ Fruit “

“ Knives on Cards.

FLEAMS.

DISH COVERS.

DRAWING KNIVES.

DOWELLING BITS.

DUSTERS—Feather.

DOG COLLARS.

DRAM BOTTLES.

DATE RACKS.

DRAWING MATERIALS.

EYE PROTECTORS OR GOGGLES.

EYELETS.

EGG BOILERS.

“ WHISKS.

EMERY.

EMERY PAPER AND CLOTH.

FRYING PANS.

FIRE IRONS—Shovel and Tongs.

FORKS—Toasting.

FUSE—Blasting.

LOU

ORKS

“

“

ENDE

INGE

FISHIN

FISH H

“

“

“

“

“

“

“

“

“

“

FISH RE

FISH RO

FILES—

“

“

“

“

“

“

“

“

“

“

“

“

LOUR BARREL NAILS.

- WORKS—Cast Steel, Hay, 2 prong.
- “ “ Straw, 3 “
- “ “ Manure.

WENDERS.

FINGER PLATES.

FISHING TACKLE.

- FISH HOOKS—Kerby.
- “ Limerick.
- “ Ringed.
- “ On Gut.
- “ On Gimp.
- “ On Wire.
- “ Minnows.
- “ Flies.
- “ Floats.
- “ Lines.

FISH REELS.

FISH RODS.

- FILES—Taper, Single Cut.
- “ Blunt.
- “ Taper, Double Cut.
- “ Pitt Saw.
- “ Mill Saw, Single Cut.
- “ Mill Saw, Double Cut.
- “ Mill Saw, Second Cut.
- “ Flat Bastard.
- “ Flat Second Cut.
- “ Flat Smooth.

FILES—Hand Bastard.  
 “ Hand Second Cut.  
 “ Hand Smooth.  
 “ Half Round Bastard.  
 “ Half Round Second Cut.  
 “ Half Round Smooth.  
 “ Round Bastard.  
 “ Square Bastard.  
 “ Horse Rasps.  
 “ Cabinet Files.  
 “ Cabinet Rasps.  
 “ Wood Rasps.  
 “ Shoe Rasps.  
 “ Shoe Rasps, improved.  
 “ Warding Files.  
 “ “Stubbs” Taper Saw Files.

GLUE.

GRINDSTONES.

GRINDSTONE Fixtures.

GRAIN CRADLES.

“ SCOOPS.

GARDEN TOOLS.

GUNSMITH'S TOOLS.

GARDEN SHEARS, AND REELS.

GAUGING RODS, AND BOOKS.

GLAZIERS' DIAMONDS.

GARDEN LINES.

GARDEN RAKES.

GRID IRONS.

GUNS and

“

“

HIMBLE

GAUGES

GUN IM.

“

“

“

“

“

“

“

“

“

“

“

“

“

“

“

“

“

GLUE PO

GOUGES—

GLASS—

HOOKS A

HINGES—

“

**GUNS and PISTOLS.**

- “ “ Revolving.  
 “ “ Imitation Colts.

**HIMBLETS.****GUGES—Marking and Mortice.****GUN IMPLEMENTS.—Powder Flasks.**

- “ Powder Horns.  
 “ Shot Pouches.  
 “ Shot Belts.  
 “ Shot Chargers.  
 “ Turn Screws,  
 “ Nipple Wrenches.  
 “ Ramrod Tips.  
 “ Ramrod Worms.  
 “ Wash Rods.  
 “ Wadding “ Baldwin’s.”  
 “ Wad Punches.  
 “ Bullet Moulds.  
 “ Plugs and Nipples.  
 “ Nipples only.  
 “ Percussion Caps.  
 “ Locks.  
 “ Gun Furniture, Brass and Iron.

**GLUE POTS.****GOUGES—Cast Steel, Firmer.****GLASS—Window, 7 x 9 to 40 x 50.****HOOKS AND HINGES.****HINGES—Heavy, Scotch T.**

- “ Light T.

HINGES—Chest.

“ Strap.

HAMMERS—Smiths' Hand.

“ Smiths' Sledge.

“ Rivetting Heads.

“ Veneering Heads.

“ Carpenters'.

“ Shoe.

“ Farriers'.

“ Tack.

HATCHETS—Shingling.

“ Lathing.

“ Claw.

“ Hunting.

HALTERS—Rope.

HAIR SEATING.

HOLLOW WARE—Untinned Tea Kettles.

“ Tinned Tea Kettles.

“ Untinned Saucepans and Covers.

“ Tinned Saucepans and Covers.

“ Enamelled Saucepans.

“ “ Maslin Kettles.

“ Glue Pots, Tinned Cups.

“ “ Enamelled Cups.

“ “ Copper Cups.

HOES—Boston.

“ Turnip.

“ Garden.

HOES

“

“

HOLD

HOOK

“

“

“

“

“

“

“

HOOKS

HASPS

HANDS

“

“

IRON G

IRONS—

“

INKSTA

ITALIA

IRON—

“

“

“

“

“

“



HOES—Grubbing.

“     Handled, Rivetted Shank.

“     “     C. S. Solid “

HOLDFASTS.

HOOKS—Cornice.

“     Hat.

“     Wardrobe, Japanned.

“     Hat and Coat, Japanned and Brass.

“     Cabin, Iron and Brass.

“     Meat to drive and Nail.

“     “     to screw.

“     Tinned Ceiling.

HOOKS AND STAPLES.

HASPS AND STAPLES.

HANDLES—Common Chest.

“     Improved Chest.

“     Door, Brass and Japanned.

IRON GAS TUBING.

IRONS—Sad.

“     Tailors’.

INKSTANDS.

ITALIAN IRONS.

IRON—Flat Bar and Bundle.

“     Round Bar     “

“     Square Bar     “

“     Hlf. Round Bar “

“     Oval Bar     “

“     Angle.

“     Rivet.

**IRON—Nail Rod.**

- " Hoop.
- " Band.
- " Sheet.
- " Boiler Plate.
- " Russia Sheet.

*Common Sizes of Bar Iron.*

- " Flat,  $1\frac{1}{8} \times \frac{1}{4}$  in. and upwards.
- " Square  $\frac{5}{8}$  " "
- " Round  $\frac{5}{8}$  in. and upwards.

*Extra Sizes of Bar Iron.*

- " Smaller than  $\frac{5}{8}$  in. Square and Round.
- " Larger " 3 " "
- " Smaller "  $1\frac{1}{8} \times \frac{1}{4}$  in. Flat.
- " Larger "  $6 \times 1$  " "
- " Thicker " 1 " "

**JACKS—Boot.**

**JACK CHAIN.**

**JEW'S HARPS.**

*Weight of a Superficial Foot of Sheet Iron.*

No. of Wire Gauge, and Weight.		No. of Wire Gauge, and Weight.		No. of Wire Gauge and Weight.	
No.	Weight	No.	Weight.	No.	Weight.
1	12.05	11	5.00	21	1.40
2	12.06	12	4.38	22	1.25
3	11.00	13	3.75	23	1.12
4	10.00	14	3.12	24	1.00
5	8.74	15	2.82	25	90
6	8.12	16	2.50	26	80
7	7.05	17	2.18	27	72
8	6.86	18	1.86	28	64
9	6.24	19	1.70	29	56
10	5.62	20	1.54	30	50

Hoop  
to  
1  
1

Width.

In.

1  
1  
1  
1  
1  
1  
1  
2  
2  
2  
2  
3  
3  
3  
4  
4  
5  
5  
6

*Hoop Iron, regular thickness on the Wire Gauge.*

to	$\frac{1}{2}$ inch	.....	22		$1\frac{1}{4}$ , $1\frac{3}{8}$ , $1\frac{1}{2}$ , $1\frac{5}{8}$ inch	.....	16	
	$\frac{3}{4}$ "	.....	20		$1\frac{3}{4}$ to $2\frac{3}{8}$	"	.....	15
	$\frac{7}{8}$ "	.....	19		$2\frac{1}{2}$ to 3	"	.....	14
	1 "	.....	18		$3\frac{1}{4}$ to $3\frac{3}{4}$	"	.....	13
	$1\frac{1}{8}$ "	.....	17		4	"	.....	12

ound.

*Weight of Iron one foot long, Flat Bars.*

Width.	Thick-ness.	Thick-ness.	Thick-ness.	Thick-ness.	Thick-ness.	Thick-ness.
In.	$\frac{1}{4}$	$\frac{3}{8}$	$\frac{1}{2}$	$\frac{5}{8}$	3	1
1	833	1.25	1.66	2.08	2.50	3.33
$1\frac{1}{8}$	937	1.40	1.87	2.34	2.81	3.75
$1\frac{1}{4}$	1.04	1.56	2.08	2.60	3.12	4.16
$1\frac{3}{8}$	1.14	1.71	2.29	2.86	3.43	4.58
$1\frac{1}{2}$	1.25	1.87	2.50	3.12	3.75	5.00
$1\frac{3}{4}$	1.33	2.03	2.70	3.33	4.06	5.41
$1\frac{7}{8}$	1.45	2.18	2.91	3.64	4.37	5.83
2	1.66	2.50	3.33	4.16	5.00	6.66
$2\frac{1}{8}$	1.87	2.81	3.75	4.68	5.62	7.50
$2\frac{1}{4}$	2.08	3.12	4.16	5.20	6.25	8.33
$2\frac{3}{8}$	2.29	3.43	4.58	5.72	6.87	9.46
3	2.50	3.75	5.00	6.25	7.50	10.00
$3\frac{1}{8}$	2.70	4.06	5.41	6.77	8.12	10.83
$3\frac{1}{4}$	2.91	4.37	5.83	7.29	8.75	11.66
$3\frac{3}{8}$	3.12	4.68	6.25	7.81	9.37	12.50
4	3.33	5.00	6.66	8.33	10.00	13.33
$4\frac{1}{8}$	3.75	5.62	7.50	9.37	11.25	15.00
5	4.17	6.25	8.33	10.41	12.50	16.66
5	4.58	6.87	9.16	11.45	13.75	18.33
$6\frac{1}{2}$	5.00	7.50	10.00	12.50	15.00	20.00

*Sheet Iron.*

No. of Wire Gauge and Weight.

No.	Weight.
21	1.40
22	1.25
23	1.12
24	1.00
25	90
26	80
27	72
28	64
29	56
30	50

Weight of Iron One Foot Long.

	Square.	Round.
1-4 inch.....	.208 lbs.	.163 lbs.
5-16 ".....	.325	.255
3-8 ".....	.468	.368
7-16 ".....	.638	.501
1-2 ".....	.833	.654
9-16 ".....	1.05	.828
5-8 ".....	1.30	1.02
3-4 ".....	1.87	1.47
7-8 ".....	2.55	2.00
1 ".....	2.33	2.61
1 1-8 ".....	4.21	3.31
1 1-4 ".....	5.20	4.09
1 3-8 ".....	6.30	4.95
1 1-2 ".....	7.50	5.89
1 5-8 ".....	8.80	6.91
1 3-4 ".....	10.20	8.01
2 ".....	13.33	10.47
2 1-4 ".....	16.87	13.25
2 1-2 ".....	20.80	16.36
2 3-4 ".....	25.20	19.79
3 ".....	30.00	23.56
3 1-4 ".....	35.20	27.65
3 1-2 ".....	40.50	32.07
3 3-4 ".....	46.87	36.81
4 ".....	53.33	41.88

Weight

Width a on the

5  
3  
4  
7  
8  
1  
11  
11  
13  
13  
13  
14  
17  
18  
2

No. 1 i  
" 4 i  
" 7 i  
" 11 i  
" 16 i  
" 22 i

Weight

Thickness

1-4 inch  
5-16 "  
3-8 "  
7-16 "  
1-2 "  
9-16 "  
5-8 "

ot Long.

*Weight of a Ten Foot length of Hoop Iron, and its regular thickness on the Wire Gauge.*

Round.	Width and Thickness on the Wire Gauge.	Weight.	Width and Thickness on the Wire Gauge.	Weight.
208 lbs.	X 21	.685	2 1/4 X 15	5.25
325	X 20	.885	2 1/2 X 15	6.50
368	X 19	1.24	2 3/4 X 14	7.15
338	X 18	1.55	3 X 14	7.80
333	X 17	2.04	3 1/4 X 13	10.10
35	X 17	2.27	3 1/2 X 13	10.80
30	X 16	2.86	3 3/4 X 13	11.60
37	X 16	3.12	4 X 12	14.60
33	X 16	3.35	4 1/2 X 11	18.75
1	X 15	4.10	5 X 10	23.42
0	X 15	4.35	6 X 10	28.10
0	X 15	4.70		

*Sizes of Birmingham Wire Gauge.*

No. 1 is	5-16 of an inch.
" 4 is	1-4 "
" 7 is	3-16 "
" 11 is	1-8 "
" 16 is	1-16 "
" 22 is	1-32 "

*Weight of a Superficial Foot of Boiler Plate.*

Thickness.	Weight.	Thickness.	Weight.
1-4 inch	10.50	11-16 inch	27.00
5-16 "	12.00	3-4 "	30.50
3-8 "	15.50	13-16 "	32.00
7-16 "	17.00	7-8 "	35.50
1-2 "	20.50	15-16 "	37.00
9-16 "	22.00	1 "	40.50
5-8 "	25.50		

- KETTLES**—Brass Battery.  
**KNITTING PINS**—Steel and Iron.  
**KNOBS**—Wood Drawer.  
     “ Mineral Shutter.  
     “ “ Drawer.  
     “ White Shutter.  
     “ Mineral Knobs for Locks.  
     “ White “ “  
**KNOCKERS**—Door, Japanned and Brass.  
**KEYS**—Rimlock.  
     “ Cabinet, assorted.  
     “ Chest, Cupboard and Till.  
     “ Padlock.  
     “ Bed, Japanned.  
     “ “ Bright.  
**KETTLE EARS.**  
**KNIVES**—Hay, L and T Handle.  
     “ Straw.  
**LEAD**—in Bars, Pigs and Sheet.  
**LEAD LADLES.**  
**LADLES**—POTASH.  
**LADLES**—Soup.  
**LUSTRE BRITISH.**  
**LAMP BLACK.**  
**LAMPS**—Coal Oil, a large assortment.  
**LANTERNS**—Police Pocket.  
     “ Square Glass Japanned.  
     “ Globe Glass, Japan Guarded.

LAMP

“

“

LOOK

LOCKS

“

“

“

“

“

“

“

“

“

“

“

“

“

“

“

“

“

LATCH

“

“

“

LEVELS

MILLS—

“

“

“

MEASUR

**LAMP—Wicks.**

- “ Glasses and Chimneys.
- “ Shades.

**LOOKING GLASSES.****LOCKS, IRON—Pad.**

- “ Trunk.
- “ Chest.
- “ Cupboard.
- “ Closet.
- “ Till.
- “ Rim, Carpenter's Imitation.
- “ “ Carpenter's Patent.
- “ Plate.
- “ Drawback.
- “ People's Locks, Mineral Knob.
- “ “ “ White Knob.
- “ Mortice.

**“ BRASS—Pad.**

- “ “ Till.
- “ “ Box.
- “ “ Desk.
- “ “ Cupboard.

**LATCHES—Japanned Door.**

- “ Brass.
- “ Night.
- “ Bow.

**LEVELS SPIRIT.**

- “ Iron Pocket.

**MILLS—Grocers, with Fly Wheels, to fasten on pillar.**

- “ Grocers, with fly wheel, to fasten on stands.
- “ Box Coffee.
- “ Wood Post (Wilson's.)

**MEASURING TAPES.**

- MEAT CHOPPERS.**  
**MATCH BOXES.**  
**MARBLES.**  
**MATHEMATICAL INSTRUMENTS.**  
**MINCING KNIVES.**  
**MOLASSES GATES.**  
**MOP STICKS.**  
**NAILS—CUT. BEST MONTREAL SCRAP IRON.**  
 “ Rose.  
 “ Horse, Griffin’s and other First Class Makes  
 Countersunk Clout.  
 “ Spikes, Pressed.  
 “ Fine Clout in 1 M. Papers.  
 “ Fine Clout Tinned, in 1 M. papers.  
 “ Patent Pressed, Flat and Sharp Points, in  
 boxes of 50 lbs each.  
 “ Tacks, Black Flemish.  
 “ Tacks, Tinned Flemish.  
 “ Cut Brads, Patent.  
 “ Cut Tacks.  
 “ Carpet Tacks, Leathered head.  
 “ Cut Gimp Tacks.  
 “ Shoe, Iron and Zinc, in 1 lb parcels.  
 “ “ “ in 14 lb parcels.  
**OIL.—Coal.**  
 “ Machinery.  
 “ Linseed.  
 “ Elephant.  
 “ Lard.  
**NUTS—For Bolts,  $\frac{3}{8}$ ,  $\frac{1}{2}$ ,  $\frac{5}{8}$ ,  $\frac{7}{8}$ , 1 $\frac{1}{4}$ , 1 $\frac{1}{2}$  inch.**  
 “ Square and Hexagon.  
**PLANE IRONS—Cast Steel, Single Cut.**  
 “ Cast Steel, Double.



Plough—Moulds.

“ Points.

“ Beams.

PAINTS & COLORS—Dry and in Oil.

- “ “ White Lead.
- “ “ Red “
- “ “ White Zinc.
- “ “ Whiting.
- “ “ Venetian Red.
- “ “ Vermillion.
- “ “ Spanish Brown.
- “ “ Yellow Ochre.
- “ “ Chrome Yellow.
- “ “ French Ochre.
- “ “ Chrome Green.
- “ “ Paris “
- “ “ Imperial “
- “ “ Brunswick “
- “ “ Bronze “
- “ “ Celestial Blue.
- “ “ Ultramarine Blue.
- “ “ Prussian “
- “ “ Raw Umber.
- “ “ Burnt “
- “ “ Raw Sienna.
- “ “ Burnt “
- “ “ Lamp Black.
- “ “ “ Refined.
- “ “ Drop “
- “ “ White Chalk.
- “ “ Red “
- “ “ Rose Pink.
- “ “ Vandyke Brown.
- “ “ Fire Proof Paint.

CRAP IRON.

First Class Makes

papers.  
Sharp Points, in

ad.

parcels.  
parcels.

ch.

PICKAXES.

POTASH KETTLES—"Cast, lip up," a superior article.

PIPE AND CART BOXES.

PUMPS.

PUMP CHAINS.

POWDER—FF,  $\frac{1}{2}$  lb and 1 lb Canisters.

" FFF,  $\frac{1}{2}$  lb and 1 lb. "

" Diamond Grain,  $\frac{1}{2}$  lb and 1 lb Canisters.

" Duck, in  $\frac{1}{2}$  lb, 1 lb and 4 lb "

" Blasting, in kegs.

" F, FF, and FFF, in kegs.

PLANES—Smoothing, double.

" Jack, "

" Trying, "

" Jointers.

" Hollows and Rounds.

" Beads, assorted, per pair.

" Plough.

" Match and Moulding, of all kinds.

PANS—Wood Handle, Dust.

PESTLES AND MORTARS.

PIANO—Stool Screws.

PLATES—Coffin.

" Men's, Women's, Youths', and Children's sizes.

" Coffin, in Sets, with Furniture.

PIPE—Lead, Composition, and Iron Gas.

PENS—Steel.

PEN—Holders.

PAPER WEIGHTS.

PRICKER PADS—Beech and Box.

PURSES.

a superior article.

PULLIES—Screw, Iron.  
 “ Upright, Iron.  
 “ Axle, Iron Face.  
 “ Axle, Brass Face.

RINGS—Japanned Manger.

RAZOR STROPS.

RULES—Box Wood, 2 feet, 4 fold.

“ “ 2 feet, 2 fold.

“ “ 3 feet, 4 fold.

“ “ Shoemakers' Size Sticks.

“ Ivory, 1 and 2 foot.

RIVETS—Coopers'.

“ Tinned.

“ Black.

“ Copper and Brass.

RAKES—Wood, Hay.

“ Iron, Garden.

ROPE AND CORDAGE—Hemp.

“ “ Manilla.

“ “ Cotton.

ROPE AND CORDAGE—Bed Cords, Hemp and Manilla.

“ “ Hambro Lines “ “

“ “ Plough “ “ “

SPADES—Short and long handle, square and round point

SHOVELS— “ “ “ “

“ Miners'.

STRAW AND HAY KNIVES.

SOLDERING IRONS.

SASH WEIGHTS.

SPELTER SOLDER.

SHOT—Assorted, B to No. 10.

STEEL—Cast, Spring and Blister.

lb Canisters.

“

inds.

Children's sizes.

- STEEL Sleigh Shoeing, and Toe Corking.  
 SAD IRONS AND TAILOR IRONS.  
 SHOE BILLS—Iron and Zinc.  
 SLATES—Hard and Soft Wood Frames.  
 SOFA SPRINGS.  
 STEEL YARDS.  
 SCALE BEAMS.  
 SCALES—Counter.  
     “    Tea.  
     “    Counter Platform.  
 SPRING BALANCES—Brass Face.  
     “    “    “    with Scoop.  
 SICKLES AND REAPING HOOKS.  
 SCYTHE HANDLES.  
     “    “    Patent Heel.  
 SCYTHES—Moore's, Blood's, and several Canadian makers  
     —the latter manufactured expressly for us.  
 SCYTHE STONES.  
 STONES—Water of Ayr, Hindoostan and Oil.  
     “    Shoemakers'.  
 SCRATCH AWLS.  
 STAPLES—Japanned, Round, Square.  
 SASH BRACKETS.  
 SHELF BRACKETS.  
 SCREW EYES.  
 SASH—Linc.  
     “    Blind Cord, Green, Blue and Scarlet.  
 SQUARES—Iron.  
     “    Steel.  
     “    Plated.  
 SPOKESHAVES.

SAWPADS—Handled.

SKATES.

SHEEP SHEARS.

SHOE HAIRS.

SIEVES.

STOVE—Polish, in Rolls and Squares.

SAWS—Cross Cut.

- “ Frame.
- “ Billet Webs.
- “ Hand.
- “ Panel.
- “ Ripping.
- “ Tenon.

SAWS—Keyhole.

- “ Meat.
- “ Mill.
- “ Circular.
- “ Pruning.

SAW FRAMES.

SPOONS—Britannia Metal, Table.

- “ “ “ Tea.
- “ “ “ Ladles.
- “ British Plate, Table.
- “ “ “ Dessert.
- “ “ “ Tea.
- “ “ “ Table Forks.
- “ “ “ Dessert Forks.
- “ Electro-Plate, Table.
- “ “ “ Dessert.
- “ “ “ Tea.
- “ “ “ Table Forks.
- “ “ “ Dessert Forks.
- “ Tinned Iron, Table.
- “ “ “ Tea.
- “ “ “ Basting.

## SPECTACLES.

## SPECTACLE CASES.

## SNUFFERS AND SNUFFER TRAYS.

## STEEL TOYS—Swivels.

“ Shoë Punches.

“ “ Pincers.

“ Tower Pincers.

## STEEL TOYS—Cutting Nippers.

“ Saw Sets.

“ Punches—Nail Brad.

“ Saddlers.’

“ Curling Irons.

“ Compasses—Carpenters.’

“ “ Coopers.’

“ Pliers—Flat Nose.

“ “ Round Nose.

“ Farriers’ Pincers.

“ Sugar Nippers.

“ Saddlers’ Knives.

“ Shoë Punch Pliers.

“ Boot Hooks.

“ Button Hooks.

“ Callipers.

“ Pliers—Side Cutting.

“ “ Fore “

“ Dividers.

“ Tuning Forks.

“ Wire Guages.

“ Meat Choppers.

## SCREWS—(Wood) Gimblet Point, Iron and Brass.

“ Bed.

“ Handrail.

“ Bench, Wood and Iron.

“ Coach and Carriage Bolts.

TIN—Block and Ingot.

“ Bar.

TIN PLATES—Charcoal.

“ Coke.

TOOL BASKETS—Bound and Unbound.

TRAPS—Iron, Rat.

“ “ Mouse.

“ “ Mink, Fox, &c., &c.

TODDY KETTLES—

TEA AND COFFEE POTS.

“ “ Block Tin and Britannia Metal.

TOAST RACKS.

TRAYS—Tea.

“ Waiters.

“ Bread Baskets.

TROWELS—Masons’.

“ Plasterers’.

“ Pointing.

“ Garden.

THIMBLES—Women’s.

“ Tailors.’

TIMBER SCRIBERS.

TAP BORDERS.

TURNSCREWS.

THERMOMETERS.

TWINE—All sizes.

THREAD—Shoe and Closing.

VICES—Blacksmiths’ and Hand.

VIOLIN STRINGS.

- WEIGHTS—Iron and Brass.
- WHITING.
- WIRE—Iron, Brass and Copper.  
 “ Annealed.  
 “ Wove..
- WASHBOARDS—Zinc.
- WASHERS—Iron.
- WRENCHES—Coach.  
 “ Malleable, assorted.
- WHIP THONGS—Horse hide and Buckskin.  
 “ Thread.
- WHIPS.
- WATCH KEYS.
- WAFFER STAMPS.
- WAGGON BOXES—Patent.
- WEIGHING MACHINES.—Platform, with and without wheels,  
 weighing from 400 lbs. to 5 tons.  
 “ “ Counter, a large assortment.
- Zinc—Sheets and Ingots.



Co.

without wheels,  
lbs. to 5 tons.  
ment.





