

**CIHM
Microfiche
Series
(Monographs)**

**ICMH
Collection de
microfiches
(monographies)**



Canadian Institute for Historical Microreproductions / Institut canadien de microreproductions historiques

© 1994

The Institute
copy available
may be bibliog
of the images
significantly c
checked below

Colours
Couverts

Covers
Couverts

Covers
Couverts

Cover t
Le titre

Colours
Cartes

Colours
Encre d

Colours
Planches

Bound
Relié a

Tight b
along i
La reli
distors

Blank
within
been o
Il se p
lors d'
mais, l
pas été

Additi
Comm

This item is
Ce docum

10X

--	--	--

Technical and Bibliographic Notes / Notes techniques et bibliographiques

Institute has attempted to obtain the best original available for filming. Features of this copy which are bibliographically unique, which may alter any details in the reproduction, or which may require a change in the usual method of filming, are listed below.

Coloured covers/
Couverture de couleur

Pages damaged/
Pages endommagées

Pages restored and/or laminated/
Pages restaurées et/ou pelliculées

Title missing/
Titre de couverture manque

Coloured maps/
Cartes géographiques en couleur

Coloured ink (i.e. other than blue or black)/
Encre de couleur (i.e. autre que bleue ou noire)

Coloured plates and/or illustrations/
Planches et/ou illustrations en couleur

Bound with other material/
Relié avec d'autres documents

Tight binding may cause shadows or distortion on interior margin/
Reliure serrée peut causer de l'ombre ou de la distorsion le long de la marge intérieure

Blank leaves added during restoration may appear within the text. Whenever possible, these have been omitted from filming/
Il se peut que certaines pages blanches ajoutées lors d'une restauration apparaissent dans le texte, mais, lorsque cela était possible, ces pages n'ont pas été filmées.

Additional comments:
Commentaires supplémentaires:

Part of pages [1]-[4] is missing.
There are some creases in the middle of pages.
Addenda sheets tipped in.

How this is filmed at the reduction ratio checked below/
Comment est filmé au taux de réduction indiqué ci-dessous.

L'Institut a microfilmé le meilleur exemplaire qu'il lui a été possible de se procurer. Les détails de cet exemplaire qui sont peut-être uniques du point de vue bibliographique, qui peuvent modifier une image reproduite, ou qui peuvent exiger une modification dans la méthode normale de filmage sont indiqués ci-dessous.

Coloured pages/
Pages de couleur

Pages damaged/
Pages endommagées

Pages restored and/or laminated/
Pages restaurées et/ou pelliculées

Pages discoloured, stained or foxed/
Pages décolorées, tachetées ou piquées

Pages detached/
Pages détachées

Showthrough/
Transparence

Quality of print varies/
Qualité inégale de l'impression

Continuous pagination/
Pagination continue

Includes index(es)/
Comprend un (des) index

Title on header taken from:
Le titre de l'en-tête provient:

Title page of issue/
Page de titre de la livraison

Caption of issue/
Titre de départ de la livraison

Masthead/
Générique (périodiques) de la livraison

14X

18X

22X

26X

30X

12X

16X

20X

24X

28X

32X

The copy filmed here has been reproduced thanks to the generosity of:

Archives of Ontario
Toronto

The images appearing here are the best quality possible considering the condition and legibility of the original copy and in keeping with the filming contract specifications.

Original copies in printed paper covers are filmed beginning with the front cover and ending on the last page with a printed or illustrated impression, or the back cover when appropriate. All other original copies are filmed beginning on the first page with a printed or illustrated impression, and ending on the last page with a printed or illustrated impression.

The last recorded frame on each microfiche shall contain the symbol \rightarrow (meaning "CONTINUED"), or the symbol ∇ (meaning "END"), whichever applies.

Maps, plates, charts, etc., may be filmed at different reduction ratios. Those too large to be entirely included in one exposure are filmed beginning in the upper left hand corner, left to right and top to bottom, as many frames as required. The following diagrams illustrate the method:



L'exemplaire filmé fut reproduit grâce à la générosité de:

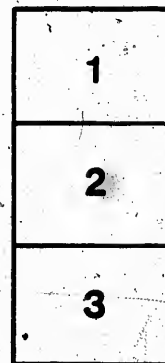
Archives of Ontario
Toronto

Les images suivantes ont été reproduites avec le plus grand soin, compte tenu de la condition et de la netteté de l'exemplaire filmé, et en conformité avec les conditions du contrat de filmage.

Les exemplaires originaux dont la couverture en papier est imprimée sont filmés en commençant par le premier plat et en terminant soit par la dernière page qui comporte une empreinte d'impression ou d'illustration, soit par le second plat, selon le cas. Tous les autres exemplaires originaux sont filmés en commençant par la première page qui comporte une empreinte d'impression ou d'illustration et en terminant par la dernière page qui comporte une telle empreinte.

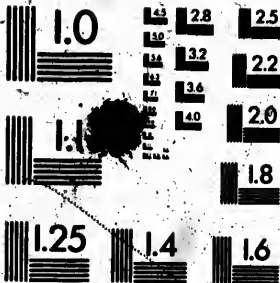
Un des symboles suivants apparaîtra sur la dernière image de chaque microfiche, selon le cas: le symbole \rightarrow signifie "A SUIVRE", le symbole ∇ signifie "FIN".

Les cartes, planches, tableaux, etc., peuvent être filmés à des taux de réduction différents. Lorsque le document est trop grand pour être reproduit en un seul cliché, il est filmé à partir de l'angle supérieur gauche, de gauche à droite, et de haut en bas, en prenant le nombre d'images nécessaire. Les diagrammes suivants illustrent la méthode.



MICROCOPY RESOLUTION TEST CHART

(ANSI and ISO TEST CHART No. 2)



APPLIED IMAGE Inc

1653 East Main Street
Rochester, New York 14609 USA
(716) 482-0300 - Phone
(716) 288-5989 - Fax

VOTERS LIST, 1884, CANTONMENT OF NEW BRITAIN

Part I. - List of persons entitled to vote in the election of members of the Legislature.

NAME	LOT	CONCESSION OF STREET	Address
1 Armstrong, James	part of 143	St. Lawrence	Cambridge
2 Abrey, John	143	St. Lawrence	Cambridge
3 Avery, John	66	St. Lawrence	Cambridge
4 Barton, Joseph	part of 69	St. Lawrence	Cambridge
5 Nuttall, John	part of 69	St. Lawrence	Cambridge
6 Brown, John	2	St. Lawrence	Cambridge
7 Boyle, William	100	St. Lawrence	Cambridge
8 Brown, Allan	100	St. Lawrence	Cambridge
9 Brennan, George	100	St. Lawrence	Cambridge
10 Nuttall, Thomas	100 and 111	St. Lawrence	Cambridge
11 Murga, Joseph	part of 1 and 3	St. Lawrence	Cambridge
12 Burchill, John	123 and 124	St. Lawrence	Cambridge
13 Bigford, John	26	St. Lawrence	Cambridge
14 Burchill, Thomas	129 and 130	St. Lawrence	Cambridge
15 Burchill, John	91	St. Lawrence	Cambridge
16 Brown, Henry	140 a other prem	St. Lawrence	Cambridge
17 Wilford, Henry	90, a other prem	St. Lawrence	Cambridge
18 Baker, Miram	23	St. Lawrence	Cambridge
19 Bell, George	23	St. Lawrence	Cambridge
20 Bates, Robert	4 & part of 5	St. Lawrence	Cambridge
21 Bates, Philander	part of 10	St. Lawrence	Cambridge
22 Brennan, James	part of 1	St. Lawrence	Cambridge
23 Brialon, Edward	8	St. Lawrence	Cambridge
24 Brialon, John	11 & part of 12	St. Lawrence	Cambridge
25 Higham, James	Old School House	St. Lawrence	Cambridge
26 Boyd, Thomas	11	St. Lawrence	Cambridge
27 Burchill, Albert E.	part 16, a 17,	St. Lawrence	Cambridge
28 Boyd, John H.	part of 8	St. Lawrence	Cambridge
29 Blase, Erasmus	part of 10	St. Lawrence	Cambridge
30 Burchill, Abraham	part of 12	St. Lawrence	Cambridge
31 Cook, Albert Isaac	101	St. Lawrence	Cambridge
32 Crabb, James	64	St. Lawrence	Cambridge
33 Clarkin, Bernard	66 and 61,	St. Lawrence	Cambridge
34 Clarkin, John	68 and 69,	St. Lawrence	Cambridge
35 Calender, Austin	91	St. Lawrence	Cambridge
36 Culbert, Thomas	part of 6	St. Lawrence	Cambridge
37 Chyrol, Mills K.	part of 26	St. Lawrence	Cambridge
38 Crozier, Melchior	80	St. Lawrence	Cambridge
39 Cranston, John	4 and 42	St. Lawrence	Cambridge
40 Cusick, Patrick	34	St. Lawrence	Cambridge
41 Cumming, John D.	part of 8	St. Lawrence	Cambridge
42 Cumming, Robert	part of 8	St. Lawrence	Cambridge
43 Campbell, R.	part of 8	St. Lawrence	Cambridge
44 Crockett, Andrew T.	part of Railway	St. Lawrence	Cambridge
45 Cusick, William	Millable Iron	St. Lawrence	Cambridge
46 Davol, Timothy	part of 12	St. Lawrence	Cambridge
47 Driscoll, William	A. & A.	St. Lawrence	Cambridge
48 Driscoll, William	3	St. Lawrence	Cambridge
49 Driscoll, William	33	St. Lawrence	Cambridge
50 Driscoll, William	51	St. Lawrence	Cambridge
51 Driscoll, William	123 and 111	St. Lawrence	Cambridge
52 Driscoll, William	122	St. Lawrence	Cambridge
53 Driscoll, William	12	St. Lawrence	Cambridge
54 Driscoll, William	part of 10	St. Lawrence	Cambridge
55 Driscoll, William	part of 10	St. Lawrence	Cambridge
56 Driscoll, William	part of 10	St. Lawrence	Cambridge
57 Driscoll, William	part of 10	St. Lawrence	Cambridge
58 Driscoll, William	part of 10	St. Lawrence	Cambridge
59 Driscoll, William	part of 10	St. Lawrence	Cambridge
60 Driscoll, William	part of 10	St. Lawrence	Cambridge
61 Driscoll, William	part of 10	St. Lawrence	Cambridge
62 Driscoll, William	part of 10	St. Lawrence	Cambridge
63 Driscoll, William	part of 10	St. Lawrence	Cambridge
64 Driscoll, William	part of 10	St. Lawrence	Cambridge
65 Driscoll, William	part of 10	St. Lawrence	Cambridge
66 Driscoll, William	part of 10	St. Lawrence	Cambridge
67 Driscoll, William	part of 10	St. Lawrence	Cambridge
68 Driscoll, William	part of 10	St. Lawrence	Cambridge
69 Driscoll, William	part of 10	St. Lawrence	Cambridge
70 Driscoll, William	part of 10	St. Lawrence	Cambridge
71 Driscoll, William	part of 10	St. Lawrence	Cambridge
72 Driscoll, William	part of 10	St. Lawrence	Cambridge
73 Driscoll, William	part of 10	St. Lawrence	Cambridge
74 Driscoll, William	part of 10	St. Lawrence	Cambridge
75 Driscoll, William	part of 10	St. Lawrence	Cambridge
76 Driscoll, William	part of 10	St. Lawrence	Cambridge
77 Driscoll, William	part of 10	St. Lawrence	Cambridge
78 Driscoll, William	part of 10	St. Lawrence	Cambridge
79 Driscoll, William	part of 10	St. Lawrence	Cambridge
80 Driscoll, William	part of 10	St. Lawrence	Cambridge
81 Driscoll, William	part of 10	St. Lawrence	Cambridge
82 Driscoll, William	part of 10	St. Lawrence	Cambridge
83 Driscoll, William	part of 10	St. Lawrence	Cambridge
84 Driscoll, William	part of 10	St. Lawrence	Cambridge
85 Driscoll, William	part of 10	St. Lawrence	Cambridge
86 Driscoll, William	part of 10	St. Lawrence	Cambridge
87 Driscoll, William	part of 10	St. Lawrence	Cambridge
88 Driscoll, William	part of 10	St. Lawrence	Cambridge
89 Driscoll, William	part of 10	St. Lawrence	Cambridge
90 Driscoll, William	part of 10	St. Lawrence	Cambridge
91 Driscoll, William	part of 10	St. Lawrence	Cambridge
92 Driscoll, William	part of 10	St. Lawrence	Cambridge
93 Driscoll, William	part of 10	St. Lawrence	Cambridge
94 Driscoll, William	part of 10	St. Lawrence	Cambridge
95 Driscoll, William	part of 10	St. Lawrence	Cambridge
96 Driscoll, William	part of 10	St. Lawrence	Cambridge
97 Driscoll, William	part of 10	St. Lawrence	Cambridge
98 Driscoll, William	part of 10	St. Lawrence	Cambridge
99 Driscoll, William	part of 10	St. Lawrence	Cambridge
100 Driscoll, William	part of 10	St. Lawrence	Cambridge

114	J Holden, Charles A.	part of 1 and 7	St. Lawrence,	O	M	F	Merrickville.
115	Harrison, Robert	part of 8	St. Lawrence,	O	M	F	do
116	Harrison, Howard	part of 8	St. Lawrence,	O	M	F	do
117	Hall, David J.	9, 2 and 3	Wellington,	O	M	F	Merrickville.
118	Hinton, William	part of 1 & 8	Concession A.	T	M	F	do
119	Hanlan, Jr. Jason	8 and 9	Park Lots,	T	M	F	do
24	J Henry, Robert Hannon	153,	St. Lawrence,	T	M	F	do
78	Hanlan, Jason	7 and 8	Wellington,	T	M	F	do
152	Harrison, Anthony T.	pt. of Wellington	Wellington,	T	M	F	do
120	J Irving, William	6 and 7	Wellington,	T	M	F	do
121	J James, John	3 and part of 39	Brock,	O	M	F	do
125	Jakes, George L.	50,	Drummond,	T	M	F	do
126	Jakes, Samuel	part of 10	Concession A.	O	M	F	do
127	Jaques, Henry W.	part of 2 and 3	Main,	O	M	F	do
128	J Knapp, Simpson	40,	Montague,	O	M	F	do
129	J Kelly, John G.	part of 8,	Brock,	T	M	F	do
130	J Kelly, Michael F.	8 and 9	Wellington,	O	M	F	do
135	Kelly John	part of 143	Colborne,	T	M	F	do
136	Kilfoil, William H.	152,	St. Lawrence,	T	M	F	do
137	J Kyle, John	102,	Elgin,	O	M	F	do
139	J Kerr, John	15 and 16,	Brock,	O	M	F	do
140	Kirk, William	part of 21,	St. John,	T	M	F	do
442	Kempfer, James M.	6,	Main,	O	M	F	do
144	Kyle, Edward	28,	West Broadway,	O	M	F	do
145	Knapp, John	29,	West Broadway,	O	M	F	do
146	Kragan, John	24,	West Broadway,	O	M	F	do
147	J Kelly, John G.	40,	Rideau,	O	M	F	do
148	Kelly, Lughlin	47,	Rideau,	O	M	F	do
150	Kyle, Patrick	40,	St. Lawrence,	O	M	F	do
155	J Lockhart, Samuel	part of 10,	Wellington,	T	M	F	do
157	J Lang, Norton K.	part of 7,	Concession A.	O	M	F	do
158	J Lison, Francis D.	part of 3,	Montague,	O	M	F	do
160	Lett, Rev. F. G.	7, 8 and 56,	Montague,	O	M	F	do
161	Lison, John	52,	Rideau,	O	M	F	do
162	Long, Matthew	13,	Wellington,	O	M	F	do
178	Lyons, John	8 and 9,	A & B,	T	M	F	do
158	J Lang, John	part of 7,	Concession	O	M	F	do
163	Meikle, John	10	Brock,	O	M	F	Smith's Falls
165	Monty, Dominic	10 & 53	Brock,	O	M	F	Merrickville.
166	J Maxwell, John	B.	Brock,	O	M	F	do
167	Mosher, David	22,	Brock,	O	M	F	do
168	J Mills, Lincoln	part of 29,	Brock,	O	M	F	do
169	J Mills, James	9,	Brock,	T	M	F	do
170	Mills, Thomas	Part of 9,	St. Lawrence,	T	M	F	do
171	Magee, Thomas	8 and 9,	Block 28,	O	M	F	do
172	Miskelly, William	5,	St. Lawrence,	O	M	F	do
175	J Mills, Alexander	92 & 93,	Elgin,	O	M	F	do
180	Montgomery, George	Part of 9,	Concession A.	O	M	F	Regina.
176	Merrick, John A.	10 & 11,	Brock,	O	M	F	Merrickville.
179	J Merrick, Walter	part of 6,	St. Lawrence,	T	M	F	do
181	J Mills, John	70 and 71,	Drummond,	O	M	F	do
182	Mulr, Rev. John	part of 7,	Concession A.	O	M	F	do
184	Merrick, Terrance	8 and 9,	Park Lots,	O	M	F	do
187	Mohoney, John H.	17, part of 18,	Block 41,	O	M	F	do
188	Merrick, Henry	Foundry,	Part of Mill-Plot,	O	M	F	Balfast.
189	Merrick, William	25,	West Broadway,	O	M	F	Merrickville.
239	J Moon, Allen	13, 14 and 15,	Main,	T	M	F	do
291	Mosher, Benjamin	20,	Brock,	O	M	F	do
190	J Magee, George B.	1, 2 and 3,	Montague,	O	M	F	do
193	Morrison, William	part of 10,	Concession B.	O	M	F	do
240	J McCahey, Wm. J.	part of A,	First and Second Range,	T	M	F	do
192	J McCahey, Edward	48 and 49,	Rideau,	O	M	F	do
193	J McCahey, Frederick M.	47,	Rideau,	O	M	F	do
194	J McKillop, Robert	43 and 45,	Rideau,	O	M	F	do
196	J McIntyre, John	3, 4 & 5,	Brock,	O	M	F	do
197	J McKillop, Ambrose	part of 4,	Brock,	O	M	F	do
198	J McDonald, Alexander	19,	St. John,	O	M	F	do
200	J McGill, Patrick	43 and 44,	St. Lawrence,	O	M	F	do
300	J McCahey, William H.	part of 84,	St. Lawrence,	T	M	F	do
203	J McCahey, Cornelius F.	part of 13,	Wellington,	T	M	F	do
204	J McCahey, William	part of 13,	Wellington,	T	M	F	do
205	J McGill, Thomas	part of 14,	St. Patrick,	T	M	F	do
206	J McDonald, Michael J.	part of 2 and 3,	Concession A.	T	M	F	do
207	J McIntyre, Henry	3 and 4,	Main,	T	M	F	do
208	J McCabe, Sgt. Patrick	part of 19,	William,	O	M	F	do
211	J McCabe, Jr. Patrick	21,	William,	O	M	F	do
212	J McGill, Bernard	32,	William,	O	M	F	do
71	J McRandal, Edward	86 & 87,	St. Lawrence,	T	M	F	do
215	J Nicholson, William	part of 8,	Concession B.	O	M	F	do
218	J O'Brien, John	part of 22,	Brock,	O	M	F	do
219	J O'Brien, Timothy	part of 30 & 31,	Brock,	O	M	F	do

220	O'Donnell, Hugh	77	Drummond,	O	M	F	Herrickville
221	O'Brien, Rev. Morgan	72	First Range,	O	M	F	do
181	O'Brien, Francis	Malvergne Iron	Foundry.	T	M	F	do
223	Peoples, Robert	31	Brook,	O	M	F	do
225	Putnam, Gordon	14	Brook,	O	M	F	do
226	Postlethwaite, Joseph	26	St. John,	O	M	F	do
227	Payen, William	part of 105	St. Lawrence,	U	M	F	do
228	Putnam, Charles W.	Part of 26	St. Lawrence,	T	O	M	F
230	Postlethwaite, Charles W.	111,	Lewis,	O	M	F	do
232	Postlethwaite, William	Part of 127,	St. Lawrence,	O	O	M	F
234	Phillips, Richard	11 & 12,	Main,	O	O	M	F
235	Postlethwaite, John O.	Part of 6,	St. Lawrence,	T	T	M	F
236	Pelton, Elisha	Part of 20	Brook,	T	T	M	F
237	Phillips, John	Part of 11	Wellington,	T	T	O	M
238	Payne, Josiah	13, 14, and 15	Main,	O	T	M	F
241	Payne, William	Part of 8,	First and Second Range,	O	T	M	F
242	Potter, Itay J. G.	Part of 2,	St. Lawrence,	T	O	M	F
243	Payen, Joseph	17,	William,	O	T	M	F
247	Pearson, William	Part of 2,	Congression B.	O	O	M	F
249	Pearson, Shanon	6 & 7,	Main,	O	O	M	F
252	Perceval, Roger O.	Foundry.	Part of Mill Plot,	O	O	M	F
253	Perceval, Thomas H.	Foundry,	Part of Mill Plot,	O	O	M	F
26	Pelton, William J.	133,	Elgin,	T	O	M	F
254	Quinn, Joseph	Part of 4 & 5	Main,	O	O	M	F
255	Quackinbush, John	Part of 56	Knat Broadway,	O	O	M	F
256	Read, Robert	Part of 24	Brook,	U	M	F	do
257	Ryan, James	Part of 104,	Lewis,	T	O	M	F
258	Rose, Charles	98,	Lewis,	O	T	M	F
259	Ros, Henry	98,	Lewis,	O	T	M	F
260	Real, Daniel	Part of 6,	St. Lawrence,	T	T	M	F
261	Riddell, Harry	Part of 6,	St. Lawrence,	T	T	M	F
262	Read, Alfred	Part of 8,	Main,	O	O	M	F
263	Roberts, Rev. William	15, Block 56,	Church,	O	O	M	F
265	Read, William O.	8,	Main,	O	O	M	F
267	Reynolds, George	Part 19, 21 & 22	Montague,	O	T	M	F
277	Rose, Ashmaud	Part of 94	East Broadway,	T	T	M	F
269	Shaller, Thomas	Part of 40	St John,	T	M	F	do
271	Smith, Richard	32, & part of 33	Brook,	T	M	F	do
273	Stevan, James	31, & 35	St. Patrick,	T	T	M	F
274	Silver, Nahin	Part of 6,	St. Lawrence,	T	T	M	F
276	Scott, William	9,	Water,	T	O	T	M
277	Sheets, Omer	Part of 20,	William,	T	O	T	M
278	Scott, David	5 & 6,	Hidean,	T	O	T	M
46	Sylvie, Francis	4,	Brook,	T	O	T	M
184	Spicer, Robert N.	Part of 15 & 18	William,	T	O	T	M
199	Smith, William P.	77,	Lewis,	O	O	M	F
279	Tero, Joseph	107 & 108	Lewis,	O	O	M	F
281	Thorp, William	161,	St. Lawrence,	O	O	M	F
282	Towle, Joseph	Part of Mill 276	St. Lawrence,	T	O	M	F
283	Trenham, William H.	26,	West Broadway,	T	O	M	F
285	Tallman, Ferdinand A.	34 & 38	William,	T	O	M	F
178	Tuck, William	Part of 8,	Congression A.	T	O	M	F
177	Thompson, Robert	Part of 8 & 9	A. and B.	T	O	M	F
213	Tassey, Peter	17 and 18	Block 41,	O	O	M	F
245	Thomas, William	Part of 12	Congression B.	O	O	M	F
286	Van Camp, Sterling F.	Part of 8 and 9	Wellington,	O	O	M	F
232	Vadder, Jerome	Part of 22	Brook,	O	O	M	F
289	White, William	13 and 14	Brook,	T	O	M	F
290	Walker, John	20,	Brook,	T	O	M	F
292	White, James	Part of 26	St. Lawrence,	T	O	M	F
293	Walkley, Edmund	2 & 3,	Brook,	T	O	M	F
296	Watchorn, Thomas	Part of 142,	St. Lawrence,	T	O	M	F
297	Wilson, Samuel	173,	St. Lawrence,	T	O	M	F
298	Wilson, Robert	135,	Colbourne,	O	O	M	F
299	Wilson, John	132,	Elgin,	O	O	M	F
300	Whitmarsh, Elizer H.	Part of 16	Main,	O	O	M	F
302	Williams, Edward	8,	East Broadway,	O	O	M	F
303	Watchorn, Robert W.	Part of Mill Plot	Woolen Mill,	O	O	M	F
304	Watchorn, George	Part of Mill Plot	Woolen Mill,	O	O	M	F
305	Watt, George	Part of 6	St. Lawrence,	O	O	M	F

PART II.—List of persons entitled to vote at Municipal Elections ONLY.

1	Aitken, Catherine	24, Part 10	Brook	Owner	Merrickville
4	Boyle, Abigail	87, Part 10	Brook	Owner	do
14	Carroll, Elizabeth	12, Part 11	Brook	Owner	do
40	Clarke, Anna	Pair of 5	St. Lawrence	Tenant	do
58	Crocker, Susanna	45, Part 10	St. Lawrence	Owner	Ottawa
76	Dowdell, Nelson	Part of 4	St. Lawrence	Owner	Merrickville
77	Duke, Caroline	Part 1 & 2	Wellington	Owner	do
82	Eagley, Eliza	20, Part 10	Brook	Owner	do
85	Earl, Catherine	Part of 6	St. Lawrence	Tenant	do
109	Gleason, Ann	3, Block 20	Main	Occupant	do
112	Hamilton, Rebecca	4, Part 10	Brook	Owner	do
115	Hansen, Rebecca	82, Part 10	Brook	Owner	do
122	Johnston, Caroline	109, Part 10	St. Lawrence	Owner	do
121	Knapp, Anna	13, Part 10	Brook	Owner	do
141	Kelly, Ann	12, Part 10	Wellington	Tenant	do
154	Lake, Rebecca	39, Part 10	St. John	Owner	do
214	Langford, Mary J.	51, Part 10	Elgin	Owner	Ottawa
156	Lennard, Charlotte	Foundry Plot	Elgin	Occupant	Merrickville
185	Merrick, Caroline	Part of 16 & 10	William	Owner	do
174	Merrick, Mary P.	Part of 8	Concession A	Owner	do
185	Milsons, Sarah	Part of 10	Montague	Tenant	do
191	Merrick, Mary	Part of 24	St. Lawrence	Owner	Athens
185	Melnyre, Susan	6, Part 10	Brook	Owner	Merrickville
206	McGill, Margaret	Part of 10	William	Owner	do
216	Nicholson, Elizabeth	Part of 24	East Broadway	Tenant	do
224	Putnam, Lucie	14, Part 10	Brook	Owner	do
229	Palmer, Ruth	12 & 13, Part 10	Lawley	Owner	Ogdenburg
250	Pearson, Oliver	6 & 7, Part 10	Main	Occupant	Merrickville
251	Pearson, Jane	6 & 7, Part 10	Main	Occupant	do
264	Reel, Mary Ann	1, Part 10	Main	Tenant	do
272	Smith, Catherine	33, Part 10	Brook	Owner	do
275	Soanlan, Susan	131, Part 10	Elgin	Owner	do
284	Tackaberry, Gary	53, Part 10	Elgin	Owner	do
286	Tood, Mary G.	Part of 2	Water	Tenant	do
291	Yanizos, Mary J.	Part of 14	First Street	Owner	do
294	Yatoborn, Agnes	Part of 10	Brook	Owner	do
298	Yokwire, Jane	Part of 80	St. John	Tenant	do
305	York, Mary	3, Part 10	Park Lot	Owner	Brookville
50	Woods, Jane	14, Part 10	St. Lawrence	Tenant	Merrickville

PART III.—Persons entitled to Vote at Elections to the Legislative Assembly only.

207	Atchison, William	M F	Merrickville	134	Johnson, Matthew H.	M F	Merrickville
21	Brennan, Thomas	M F	do	135	Kelby, Barnabus	M F	do
25	Bull, Howard	M F	do	136	Kelly, William	M F	do
27	Bull, William	M F	do	143	Kilpatrick, Alexander	M F	do
34	Crinan, Phineas	M F	do	194	Kelly, Michael	M F	do
36	Crocker, Thomas	M F	do	200	Langley, Robert	M F	do
36	Crinan, Charles	M F	do	210	McGinnis, Robert	M F	do
107	Donnell, W. K.	M F	do	211	McGinnis, David	M F	do
206	Dole, A. H.	M F	do	211	McGinnis, John	M F	do
40	Dusick, Thomas	M F	do	219	McGinnis, James	M F	do
76	Doyl, Edward V.	M F	do	227	McGinnis, James	M F	do
80	Dove, Francis	M F	do	244	McGinnis, Edward	M F	do
80	Dove, Francis	M F	do	245	McGinnis, John	M F	do
80	Dove, Francis	M F	do	246	McGinnis, James	M F	do
80	Dove, Francis	M F	do	247	McGinnis, James	M F	do
80	Dove, Francis	M F	do	248	McGinnis, James	M F	do
80	Dove, Francis	M F	do	249	McGinnis, James	M F	do
80	Dove, Francis	M F	do	250	McGinnis, James	M F	do
80	Dove, Francis	M F	do	251	McGinnis, James	M F	do
125	Johnston, John	M F	do	252	McGinnis, James	M F	do

I, John Johnston, Clerk of the Municipality of the village of Merrickville, do hereby certify that the one and three of the within List contains a correct list for the year 1894, of all persons appearing on the last revised Assessment Roll of the said Municipality to be entitled to vote at Elections to the Legislative Assembly, and that parts one and two contain a correct list of all persons appearing on the said roll to be entitled to vote at Municipal Elections in said Municipality; and I hereby call upon all Electors to examine the said list, and if any corrections or omissions are perceived therein, to take immediate proceedings to have the said errors corrected according to law.

Dated this First day of September, 1894.

JOHN JOHNSTON, Clerk of said Municipality.

Clerk's Office
Merriamville Dec 7th 1893

To His Honor the Judge of the County Court of the
United Counties of Leeds and Grenville:

The Clerk of the Municipality of
Merriamville states and reports that the several persons
mentioned in Column 1 of the schedule below, and no
others, have each given to him written notice com-
plaining of errors or omissions in the Voter's List for
the said Municipality for 1893, on the grounds men-
tioned in Column 2 of the said schedule and that
such notices were received respectively at dates
set down in Column 3 of the said schedule.

Dated at Merriamville

this 7th day of December 1893.

J. J. J. J.
Clerk of Merriamville

Complainant	Errors or Omissions complained of	Date when notice of complaint was received
David J. Hall	Alexander Witcheson should be assessed as tenant part of Stone School House	DEC 7 1893
"	Thomas Barry should be assessed as tenant part of lot 81 St John Street	" " "
"	John Barnwith should be assessed as tenant lots 15 & 16, Block 58, Queen St	" " "
"	Charles Howard Church should be M.F.	" " "
"	Simon D. Easton should be M.F.	" " "
"	Joseph Holdcroft should be assessed as tenant part of lot 143 St Lawrence Street	" " "
"	John J. Barton should be assessed as tenant part of 5 St Lawrence Street	" " "
"	Alexander Kempffer should be assessed as Occupant, part of 5, first Range Main Street	" " "

James [unclear] should be assessed as
Tenant part of 5 St Lawrence Street

Alexander Kempffer should be assessed
as Occupant, part of 5, first Range
Main Street

William Lison should be assessed as
Tenant part of 1 first Range

William Newman should be assessed
as owner of part of 27 Block 105

Edward A. Read should be assessed
as Tenant part of old Just
mill

William D. Scotch should be assessed
as Tenant of 54 Drummond St

Henry Hatford should be assessed
as owner of South Half 105 St Lawrence St.

John Hart should be assessed as
Tenant of part of 10 first Range

Edmund Erath should be Edward
P. Erath Jr.

Edmund Erath should be Edward
P. Erath Jr.

G. W. Whitmarsh should be George
A. Whitmarsh

James Gleason, non-resident failed to
give notice required by Law

Howard Harrison, non-resident failed
to give notice required by Law

^{non-resident}
Ephraim Sullivan, failed to give notice
required by Law

James Wigham, non-resident failed
to give notice required by Law

George Whitney, non-resident failed
to give notice required by Law

~~Simon Pearson~~
Simon Pearson, failed to give notice
required by Law

Simon Pearson not an occupant

Oliver Pearson not an occupant

Simon Pearson not an occupant

Olive Pearson not an occupant

Jane Pearson not an occupant

George Bell should be part of 1st
first 1st and Range

Abigail Pugh should be 17 Black 58
Black Street

Nathaniel Busch should be part of
1st first Range

Elijah D. Cummings should be 2
third Range

Albert Cummings should be 6
third Range

David J. Hall should be 9 second
Range

William Boyle should be 17 Black 58
Black Street

Third Range

Albert Cummings should be 6
Third Range

David J. Hall should be 9 second
Range

William Boyle should be 17 Block 58
Rock St

Anthony V. Harrison should be
Kane Factory

Ambrose McKibbin should be
part of 26 Corner St Lawrence + Rock

Michael J. McDonald should be
16 Main Street

Samuel Rockhart should be part of
9th First Range

Timothy Dunahoe should be 11, 13 & 13
Block 58, Rock Street

John Meikle should be 10 instead of 9

John Charles Howard Church
put on Simon D. Easton
at bondman Joseph Kolditzoff

Lot 25 & 26 Black St. Boett Street
Should be m.t. part 3
Should be m.t. part 3

St. Lawrence with
part 1 on 2
part 2 on 3
part 3 on 4

John Johnston
James Johnston
William Johnston

Should be assessed tenant part
of lot in Lawrence Street
Should be assessed tenant part
of lot in Lawrence Street

put on

William Lison

Should be assessed occupant
part of first Range Main Street
Should be assessed tenant
part of first Range

put on
abandoned

William J. Newman

Should be assessed owner
part of 27 Black St.

Edward A. Reed

Should be assessed tenant
part of old first mill

William D. South

Should be assessed tenant
part of second street

put on
part 1 on 2

Henry [redacted]

Should be assessed owner of
both halves of 103 St. Lawrence St.

John [redacted]
with [redacted]

Should be assessed tenant
part of 25 first Range

correct

Edmund Erath

Should be Edward Erath Jr.

Gov. Whitmarsh

Should be George A. Whitmarsh

James Gleason

Non-resident failed to give
notice required by Law.

off 1 on 2

Howard Garrison

Non-resident, failed to give
notice required by Law.

Strike off part 1
part 2 on part 3

Ephraim Dallman

Non-resident failed to give
notice required by Law

off 1 on 2

James Urquhart

Non-resident failed to give
notice required by Law

off 1 on 2

George Whitney

Non-resident failed to give
notice required by Law

front on
off 1 on 2

James Urquhart

notice required by Law
non-resident failed to give
notice required by Law

off 1 on 2

George Whitney

non-resident failed to give
notice required by Law

Simon Pearson
Chris Pearson
Gaut Pearson
George Bell

not an occupant
not an occupant
not an occupant
Should be assessed part of

allowed

27 & 3 first & second Range

allowed

Margaret Boyle

Should be assessed for 17
Block 58, Brock Street

allowed

Patrick Curran

Should be assessed part of
1st first Range

allowed

Elijah D. Cummins

Should be assessed for 2
third Range

allowed

Albert Cummins

Should be assessed for 6
third Range

allowed

David J. Hall

Should be assessed for 9
Second Range

allowed

William Boyle

Should be assessed for 17
Block 58, Brock Street

allowed

Anthony D. Harrison

Should be Home Factory

allowed

Ambrose McKittrick

Should be assessed part
of 96 Corner St. Lawrence & River

allowed

Michael J. McDonald

Should be assessed 16 Main Street

allowed

Samuel Lockhart

Should be assessed part of 10
first range

allowed

Timothy Donohue

Should be assessed 11, 12 & 13
Block 58, Brock Street

allowed

John Meikle

Should be assessed 10 instead of
9

CERTIFICATE OF JUDGE.

I, *James Reynolds the junior*, Judge of the County Court of the United Counties of Leeds and Grenville, pursuant to Section 17, of "THE ONTARIO VOTERS' LISTS ACT, 1889," do hereby certify that the annexed is a corrected copy of the List of Voters for the year 1892, received by me from the Clerk of the Municipality of the *Village* of *Merrickville* in the said United Counties, according to my revision and correction thereof pursuant to the provisions of the said Act.

DATED at the TOWN OF BROCKVILLE, this *27th*

day of

December

A.D. 1892

James Reynolds

JUDGE.

STATEMENT OF ALTERATIONS BY JUDGE.

(SECTION 47, AND SECTION 1.)

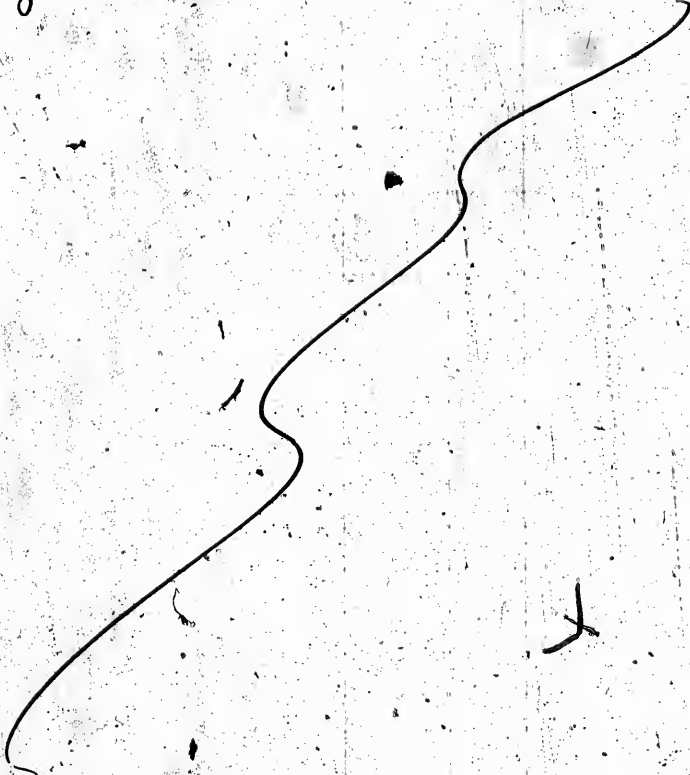
BE IT REMEMBERED that upon a final revision and correction of the List of Voters of the Municipality of the Village of Brantford for the year 1892 pursuant to the provisions of "The Ontario Voters' Lists Act, 1889," the following changes were duly made by me in the copies of the said list received by me from the Clerk of the said Municipality, viz.:

1. The following persons are added to the said list:

NAME	Polling Sub-Division	Part of List	Property or other Qualification
Ditchison, Alex.	1	1	ft 9 Stone St. Br. S. + D
Berry Thos.	1	1	25 Burch St Br. S. + D
Cornwall John	1	1	15-16 Burch Br. S. + D
Church Chas. Howard	1	3	Br. S.
Easton Simon, J.	1	3	Br. S.
Johnston John	1	1	Lot 9, 4 th R. Br. S. + D
Kempfer, Alex. Chas	1	3	Br. S.
Lisson Wm	1	1	1 st R. Br. S. + D
Brown Wm J.	1	1	ft 27, 23, 45 Br. S. + D
Thetford Henry	1	1	5 1/2 105 St. L. Br. S. + D
Gleason, Jas.	1	2	5 Burch 3 rd main, O.
Harrison Howard	1	2	ft 9. Wel. O.
Dallman Ephraim	1	2	ft 4 St John O.
Urquhart Jas	1	2	21 Burch, O.
Whitney Geo.	1	2	ft 6 St. L. O.
Gitchison Alex	1		
Berry Thos.	1		

2. The following persons are struck off the said List:

NAME	Polling Sub-Division	Part of List	Property or other Qualification
Gleason Jas	1	1	3 B. 26 O. M. J.
Harrison Howard	1	1	Pt. 9 Wel. O. M. J.
Gallman Ephraim	1	1	Pt. 4 St. J. O. M. J.
Anquart Jas	1	1	21 Brook O. M. J.
Whitney Geo.	1	1	Pt. 6 St. Row. O. M. J.
Aitchison Alex.	1	3	Kn. J.
Berry Thos.	1	3	Kn. J.



J

3. The following changes are made in the property described opposite to the names of voters otherwise correctly inserted:

NAME	Polling Sub-Division	Part of List	Property or other Qualification as Originally Described on List	Property or other Qualification as Altered
Bell, Geo.	1	1	3 Main	2 + 3 1 st + 2 nd Page
Cusick Patrick	1	1	14 Main	14 1 st Page
Boyle, Abigail	1	2	2 Broch	17 B 58 Broch
Cummings, Elijah	1	1	B. Wel.	D 3 rd Page
Cummings, Albert	1	1	C Wel.	C 3 rd Page
Stall, David J.	1	1	9 Wel.	9 2 nd Page
Boyle, Wm	1	1	2 Broch	17 B 58, B 60
Harrison, Anthony J.	1	1	pt. No. 1, Felg	Stan. Felg
McKibbin, Ambrose	1	1	pt. 4 Broch	26 or 28 + 18
McDonald, Nehil J.	1	1	pt 8 + 9 on A	16 Main
Lockhart, Saml	1	1	pt 10 Main	pt 10 1 st Page
Donohue, Dorothy	1	1	6, 7, 8, B. 58	11, 12, 13 B 4 Broch
Mickle, John	1	1	9 Broch	10 Broch

4. The following changes are made in the names of voters incorrectly named:

Name Originally on List	Polling Sub-Division	Part of List	Name as Altered	Property or other Qualification
Cratt Edward	1	3	Cratt Edward	M. J.
Whitmarsh G. W.	1	3	Whitmarsh Geo. A.	M. J.

Merrickville
1892



WITNESS my hand this

24th

day of

December

1892

[Signature]
County Judge, Co. of *[Signature]*

The following names are added to the list

Name	Lot	Street	Qualification
Witcher Alexander	Pt Stone	S.H.	M 7 J
Berry Thomas	28	Brook	M 7 J.
Farrington John	15.16	B 58 Brook	M 7. J
Johnson John	29	4 th Range	M 7. J
Lisson Wm	1	1 st Range	M 7 J
Newman Wm J.	M 27	B 45.	M 7. 0
Thetford Army	S 1/2 105	St L	M 7. 0

Part 2

Gibson James	3	Block 56 main	0
Harrison Howard	Pt G.	Wellington	0
Tellman Ephraim	Pt H.	St John	0
Wright James	21	Brook	0
Whiting George	Pt 6.	St L	0

Part 3

Church Charles Howard	—	—	M 7
Easton Simon J.	—	—	M 7
Kumpffu Alvin?	—	—	M 7

