

**CIHM  
Microfiche  
Series  
(Monographs)**

**ICMH  
Collection de  
microfiches  
(monographies)**



**Canadian Institute for Historical Microreproductions / Institut canadien de microreproductions historiques**

**© 1997**

Technical and Bibliographic Notes / Notes techniques et bibliographiques

The Institututa has attempted to obtain the best original copy available for filming. Features of this copy which may be bibliographically unique, which may alter any of the images in the reproduction, or which may significantly change the usual method of filming, are checked below.

L'Institut a microfilmé le meilleur exemplaire qu'il lui a été possible de se procurer. Les détails de cet exemplaire qui sont peut-être uniques du point de vue bibliographique, qui peuvent modifier une image reproduite, ou qui peuvent exiger une modification dans la méthode normale de filmage sont indiqués ci-dessous.

- Coloured covers/  
Couverture de couleur
- Covers damaged/  
Couverture endommagée
- Covers restored and/or laminated/  
Couverture restaurée et/ou pelliculée
- Cover title missing/  
La titre de couverture manque
- Coloured maps/  
Cartes géographiques en couleur
- Coloured ink (i.e. other than blue or black)/  
Encre de couleur (i.e. autre que bleue ou noire)
- Coloured plates and/or illustrations/  
Planches at/ou illustrations an couleur
- Bound with other material/  
Ralié avec d'autres documents
- Tight binding may cause shadows or distortion  
along interior margin/  
La reliura serrée peut causer de l'ombra ou de la  
distorsion le long de la marge intérieure
- Blank leaves added during restoration may appear  
within the text. Whenever possible, these have  
been omitted from filming/  
Il se paut que certaines pages blanches ajoutées  
lors d'une restauration apparaissent dans le texte,  
mais, lorsque cela était possible, ces pages n'ont  
pas été filmées.

- Coloured pages/  
Pages de couleur
- Pages damaged/  
Pages endommagées
- Pages restored and/or laminated/  
Pages restaurées et/ou pelliculées
- Pages discoloured, stained or foxed/  
Pages décolorées, tachetées ou piquées
- Pages detached/  
Pages détachées
- Showthrough/  
Transparence
- Quality of print varies/  
Qualité inégale de l'impression
- Continuous pagination/  
Pagination continue
- Includes index(es)/  
Comprend un (des) index
- Title on haader taken from: /  
Le titra de l'an-têta provient:
- Title page of issue/  
Page de titra de la livraison
- Caption of issua/  
Titre de départ de la livraison
- Masthaad/  
Générique (périodiques) de la livraison

- Additional comments: /  
Commentaires supplémentaires:      Pagination is unnumbered.

This item is filmed at the reduction ratio checked below/  
Ce document est filmé au taux de réduction indiqué ci-dessous.

10X	14X	18X	22X	26X	30X
<input type="checkbox"/>	<input type="checkbox"/>	<input type="checkbox"/>	<input checked="" type="checkbox"/>	<input type="checkbox"/>	<input type="checkbox"/>
12X	16X	20X	24X	28X	32X

The copy filmed here has been reproduced thanks to the generosity of:

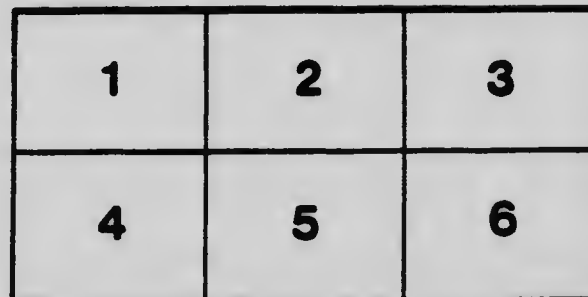
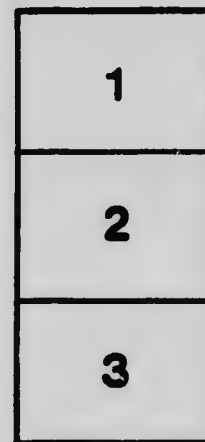
Archives of Ontario  
Toronto

The images appearing here are the best quality possible considering the condition and legibility of the original copy and in keeping with the filming contract specifications.

Original copies in printed paper covers are filmed beginning with the front cover and ending on the last page with a printed or illustrated impression, or the back cover when appropriate. All other original copies are filmed beginning on the first page with a printed or illustrated impression, and ending on the last page with a printed or illustrated impression.

The last recorded frame on each microfiche shall contain the symbol  $\rightarrow$  (meaning "CONTINUED"), or the symbol  $\nabla$  (meaning "END"), whichever applies.

Maps, plates, charts, etc., may be filmed at different reduction ratios. Those too large to be entirely included in one exposure are filmed beginning in the upper left hand corner, left to right and top to bottom, as many frames as required. The following diagrams illustrate the method:



L'exemplaire filmé fut reproduit grâce à la générosité de:

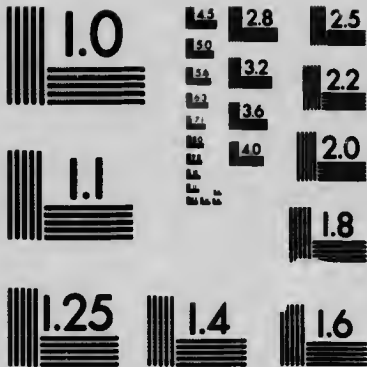
Archives publiques de l'Ontario  
Toronto

Les images suivantes ont été reproduites avec le plus grand soin, compte tenu de la condition et de la netteté de l'exemplaire filmé, et en conformité avec les conditions du contrat de filmage.

Les exemplaires originaux dont la couverture en papier est imprimée sont filmés en commençant par le premier plat et en terminant soit par la dernière page qui comporte une empreinte d'impression ou d'illustration, soit par le second plat, selon le cas. Tous les autres exemplaires originaux sont filmés en commençant par la première page qui comporte une empreinte d'impression ou d'illustration et en terminant par la dernière page qui comporte une telle empreinte.

Un des symboles suivants apparaîtra sur la dernière image de chaque microfiche, selon le cas: le symbole  $\rightarrow$  signifie "A SUIVRE", le symbole  $\nabla$  signifie "FIN".

Les cartes, planches, tableaux, etc., peuvent être filmés à des taux de réduction différents. Lorsque le document est trop grand pour être reproduit en un seul cliché, il est filmé à partir de l'angle supérieur gauche, de gauche à droite, et de haut en bas, en prenant le nombre d'images nécessaire. Les diagrammes suivants illustrent la méthode.



**MICROCOPY RESOLUTION TEST CHART**  
**NATIONAL BUREAU OF STANDARDS**  
**STANDARD REFERENCE MATERIAL 1010a**  
**(ANSI and ISO TEST CHART No. 2)**

9321



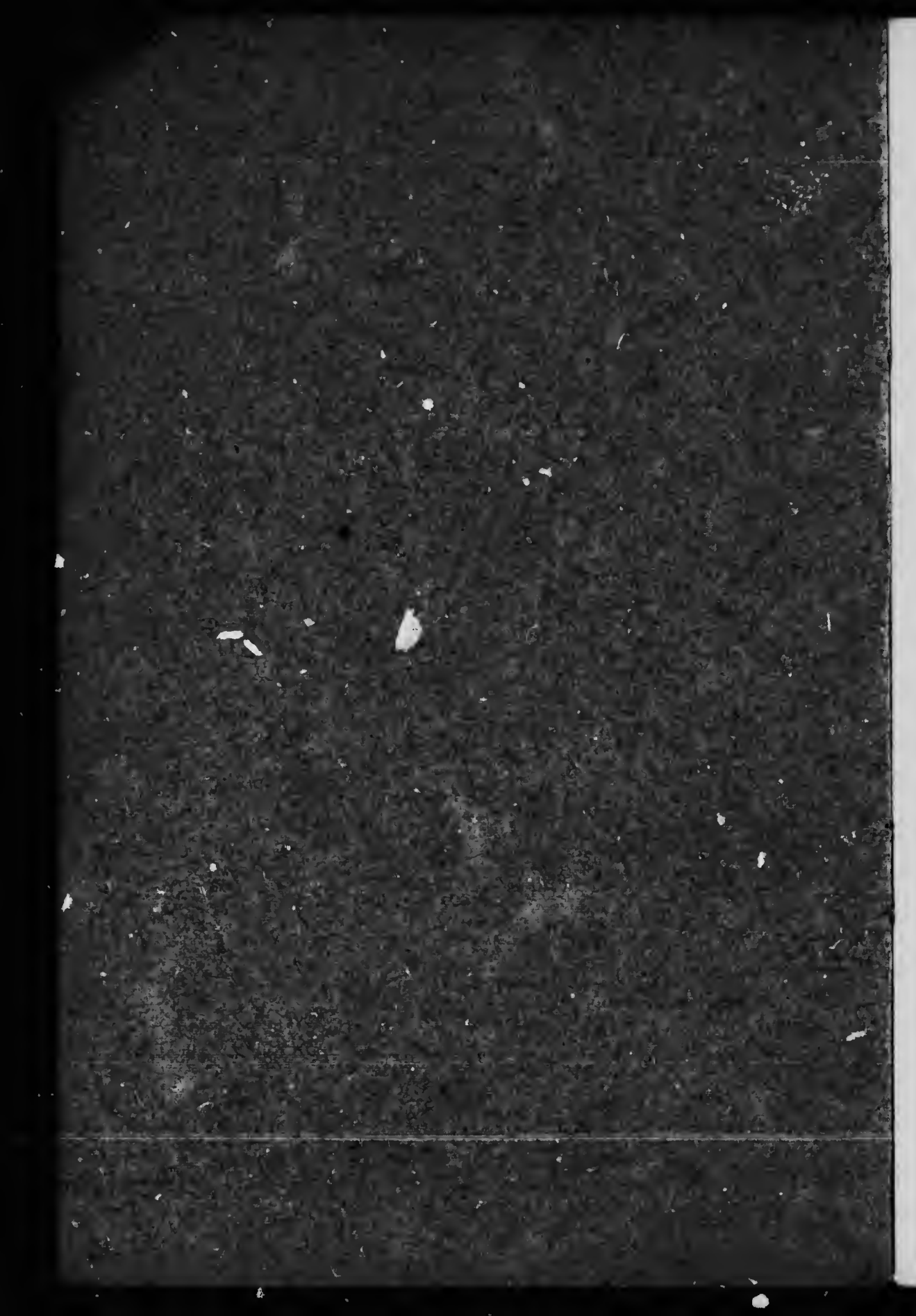
# Fort William Canada

1917  
no. 175

**SOME FACTS  
- ABOUT IT -  
THAT OUGHT  
TO INTEREST  
YOU**



**COMPLIMENTS OF  
FORT WILLIAM BOARD OF TRADE**



9321

22. ph  
1911



## FOREWORD

---

Every limited space available in a Handy Booklet of this kind would be impossible to do justice to all the salient and interesting data that could be gathered in a City and Port of Fort William's Potentialities and National importance. Suffice it to say that herein an attempt has been made to cover in a general way items of chief importance with the end in view of supplying in brief paragraphs information that the busy visitor wants to know. It is in the hope that this Booklet may answer the most prominent questions that visitors ask and prove a Handy Aid to Citizens themselves in replying to such questions that it has been compiled and published at the order of the Fort William Board of Trade.

PUBLICITY COMMITTEE, BOARD OF TRADE.



---

---

## SOME FACTS ABOUT FORT WILLIAM

---

---

# IMPORTANT FEATURES

---

Fort William's population today is 20,000. Industrial activities to re-open this Autumn will add 6,000. Ten years ago the population was 10,032.

It is the Capital of the Dominion Riding of Fort William and Rainy River Districts, extending from the Head of the Lakes to the Manitoba Boundary.

Its Chief Industrial Activities are: Grain Storage, Grain Marketing and Blending, Milling, Shipbuilding, Iron and Steel Manufacturing, Railway Box Car and Railway Car Wheel Manufacturing, Starch and Syrup Making, Iron Pipe Production, Cereal and Stock-feed Manufacturing, Broom and Spindery Making, Wood and Iron Novelty Manufacturing, Lake Fishing, Lumber Production in all its finished phases, Coal Handling, Warehousing, besides minor industrial activities, general business and mercantile pursuits.

Chief District Industries: Agriculture, Stock Raising, Lumbering, Pulp-Cutting, Gold, Copper and Iron Mining.

Has an unlimited supply of Water Power, developed and undeveloped in its immediate vicinity. The Power which now lights the city and its homes, turns the wheels in the factories and drives the street cars is derived from Kakabeka Falls, where it is developed by the Kam. Power Company.

The City is situated on a level plain on and around the Deltas formed by the forklike outlets of the Kaministiquia, McKellar and Mission Rivers. Its altitude above the sea level is 617.4 feet.

The City owns and operates its own Street Railway, and its Water, Light and Telephone Services.

Assessment today is \$38,000,000. Ten years ago it was \$6,326,270.

Number of Public and Separate Schools, 10. Public School attendance, 2,669 children.



---

---

## SOME FACTS ABOUT FORT WILLIAM

---

---

### FORT WILLIAM'S HARBORS

---

Harbor Frontage available for Dockage (exclusive of Frontage on Thunder Bay) 22.2 miles. Frontage already built up with wharves and retaining walls 7.62 miles. All land-locked and storm-proof. Total length of Harbor Frontage 26.04 miles.

Length of navigable channels in River section of Harbor 13.02 miles. At the close of the Season 1913, available depth in navigable channels varied from 20 feet to 27 feet, and in width from 175 feet to 600 feet.

Total area of present Harbor 805 acres, of which the entrance to Channels to the Kaministiquia and Mission Rivers occupy 148.8 acres. Total area saved by dredging, 353.6 acres.

Additional Harbor area available in Thunder Bay approximately 1,200 acres, giving a total area available for development in the Rivers and in Thunder Bay for this Harbor for about 2,000 acres.

As many as seventy lake boats ranging in length from 250 to 604 feet, have been accommodated in these protected Harbors at one time.

Land transportation over the Harbor channels is taken care of by a Rocker, a Bascule (or Jack-knife) and a Swing Bridge, providing rapid accommodation for vessels under way. The two first-named of these Bridges tilt upwards, the Bascule Bridge being equipped with the heaviest counter-weights of any bridge of its kind in the world.

Accidents are almost unknown in Fort William's Harbors, owing principally to the facilities provided.



#### SCENE ON FORT WILLIAM'S BUSY HARBOR

Lengthy and active as the above picture appears, it represents but a portion of Fort William's extensive harbors, which are in themselves one of the Dominion of Canada's wonderful man-made assets. Conan Doyle, the famous author, and other renowned globe trotters have not hesitated to express their surprise and admiration at the immense activity in this great grain port.

---

---

SOME FACTS ABOUT FORT WILLIAM

---

---

## GRAIN HANDLING FACILITIES

Fort William is the Point of Delivery for Grain Shipments from Western Canada to the Markets of the World. It is the site of the only Waterfront Sample Market in the Dominion and the Headquarters of the Dominion Board of Grain Commissioners.

The number of Elevators in Fort William is 20, with a total storage capacity of 28,875,000 bushels and another half million bushel unit now in course of construction.

The largest Elevator in Fort William is the Canadian Pacific "D", with a capacity of 7,500,000 bushels.

The total number of Elevators in the Twin Cities of Fort William and Port Arthur is 27, with two big new ones under construction.

The total Elevator Capacity of the two cities is today 45,930,000 bushels. With Elevators now under construction it will be 51,290,000 bushels on January 1, 1918. This is probably the greatest Elevator Capacity of any port on the North American continent.

The total receipts of grain of all kinds (with the exception of rejected mixed grain) at the Twin Ports for the Crop Year 1915-16 were as follows:—

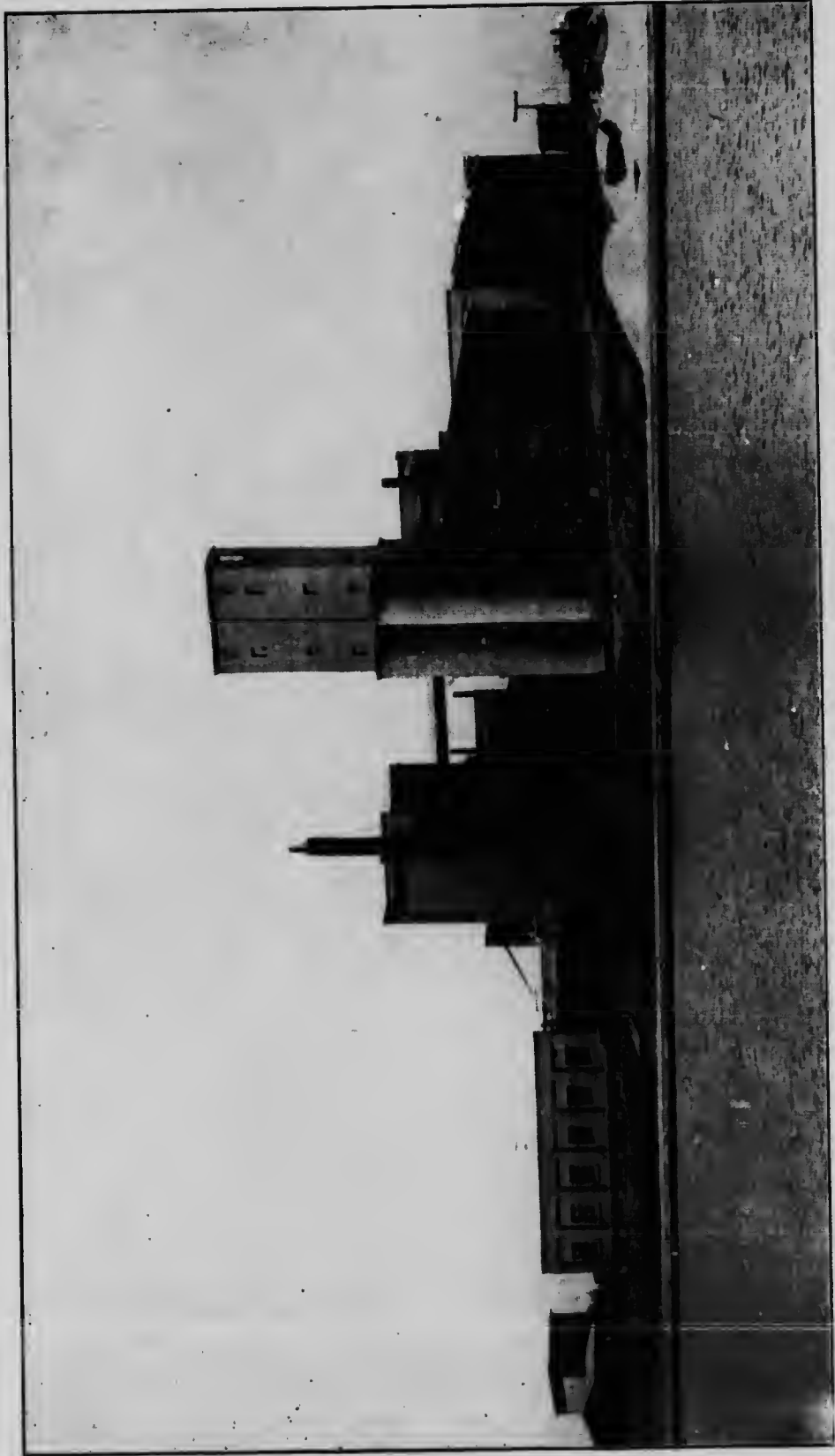
Fort William .....	263,844,355 bus.
Port Arthur .....	118,156,741 "
Total .....	382,001,096 "

The total Shipments from the Twin Ports for the same Crop Year were:—

Fort William .....	252,694,412 bus.
Port Arthur .....	116,857,534 "
Total .....	369,551,946 "

Over and above the above a total of 37,767,986 pounds of rejected mixed grains were received and 10,936,796 pounds shipped out.

The rapidity with which grain is handled here may be judged from the fact that the hatches of a grain carrying freighter holding 400,000 bushels have been trimmed ready for departure in 3½ hours.



THE CANADA STARCH WORKS, FORT WILLIAM, employing upwards of 200 men

---



---

SOME FACTS ABOUT FORT WILLIAM

---

**FORT WILLIAM ELEVATORS**

ON THE WATER FRONT

	Public Elevs. P'v'te Elevs.	
	Bushels	Bushels
Canadian Pacific "D", capacity .....	7,500,000	.....
Grand Trunk .....	5,750,000	.....
Grain Growers', "B" & "E", .....	2,500,000	.....
Eastern Terminal "A" & "C" .....	2,250,000	.....
Ogilvie Flour Mills .....	2,000,000	.....
Western Terminal .....	2,000,000	70,000
Consolidated .....	1,750,000	.....
Empire Elevator .....	1,750,000	.....
Fort William Elevator .....	1,750,000	.....
Mutual .....	.....	500,000
Dwyer .....	.....	250,000
N. M. Paterson & Co. "O" .....	.....	220,000
Black's Elevator Co., Ltd. ....	.....	150,000

INLAND

Superior .....	.....	100,000
N. M. Paterson & Co. "K" .....	.....	80,000
Roy .....	.....	55,000
Merchants' Grain Co. ....	.....	35,000
Muirhead-Bole .....	.....	35,000
Bole Grain Co. ....	.....	20,000
Totals—Fort William .....	27,250,000	1,515,000

**ALTITUDES**

Table of altitudes (above sea level) in Fort William and of points of interest in vicinity:—

Fort William City (at Union Station) .....	617.4 ft.
Lake Superior (mean water) .....	601.7 ft.
Mount McKay .....	1600 ft.
Thunder Cape (Sleeping Giant) .....	1950 ft.
The Pie (Pie Island Mountain) .....	1450 ft.
Silver Mountain .....	1730 ft.
Rabbit Mountain .....	1400 ft.
Kakabeka Falls (at the station) .....	915.4 ft.



VIEW SHOWING EAST END OF PLANT



VIEW SHOWING WEST END OF PLANT

## PLANT OF THE CANADIAN CAR AND FOUNDRY COMPANY

This enormous Car Factory, which just recently received an order for 5,000 cars for the Canadian Government Railway, is located in West Fort William. When running to full capacity, 1,500 to 2,000 workmen are employed. The pictures give a small conception of the size of this plant, which is located with convenient access to the harbor front. The upper picture on the opposite page shows the yards in the foreground, and from right to left the Steel Yard and Gas Containers, Gas Producing Engine House, Engine and Generator House, and the General Works and Machine Shops. The lower picture shows the big Foundry to the right and the Paint Shop to the left. This plant has been completed for some time, but owing to the outbreak of war preparations for general operation were not begun until this year. It is expected that the Canadian Car and Foundry plant will be in full operation in all departments by October of this year (1917). It is one of the most modern factories in Canada, being built exclusively of brick, steel and glass. Power is derived by the use of huge gas-producing engines.



---

---

## SOME FACTS ABOUT FORT WILLIAM

---

---

### RESIDENTIAL ADVANTAGES

Fort William has the purest, most palatable drinking water of any city in Ontario, brought through a tunnel by a gravity system, without the use of a single pump or clarifying agent, from Loeh Lomond, a crystal mountain lake, six hundred feet above the level of Lake Superior. The supply is inexhaustible at a uniform fire pressure of 115 pounds, and government analysis classes it as absolutely pure.

The most modern sewage and garbage systems are in vogue in Fort William, garbage being incinerated, and its board of health department efficiency is on a par with that of the larger cities.

Hay fever is unknown here, and the most aggravated cases succumb in a few days to the bracing, lung-clearing atmosphere. The nights are always cool, even following the hottest days in midsummer, making sleep a pleasant possibility even with persons previously afflicted with insomnia.

All business and most residential streets are paved. Main and belt line street cars make rapid transportation possible to any part of the city.

All public buildings are built on the modern plan. Fort William's Schools are all ventilated on approved systems and are so allocated as to be within easy access of all residential areas.

### ATHLETICS AND OUTDOOR SPORTS

Besides a Country Club, golf courses, baseball grounds, bowling greens, tennis courts, etc., Fort William has:

One of the largest and finest equipped Y. M. C. A. Gymnasiums in Canada.

The very best Speckled Trout, Lake Trout, Perch and Pike at Fishing Grounds at short distances from its borders. The largest Speckled Trout ever caught was landed by a Fort William Angler.

The most fascinating Big Game Country in all the North. Moose, Red Deer, Caribou, Brown and Black Bear abound in plenty, not to mention smaller game in general and Partridge and Arctic Hares in particular.

---

---

## SOME FACTS ABOUT FORT WILLIAM

---

---

### RAILWAYS

---

Fort William is the Converging Point for the three great Transcontinentals, the Canadian Pacific, the Canadian Northern, and the Canadian Government Railways. At a point in west Fort William is the famous "Pin-Point" where these trans-Canadian roads cross and over which passes the Exports and Imports of Half a Continent.

Some conception of the immense investment of the Transcontinentals may be gathered from the statement that the Canadian Pacific railway investments in land, trackage, elevators, coal docks, bridges, pile docks, etc., represents a figure somewhere in the neighborhood of \$20,000,000. The payrolls of the Canadian Pacific and the Canadian Government railways put into circulation an immense amount of money every month.

### MAMMOTH COAL DOCKS

---

Coal handling is a big industry here, breaking bulk for all lake and rail shipments to Canada west taking place in Fort William Harbors. The three big Coal-Handling Plants on the water front, one of which alone represents an investment of \$3,000,000, are:

The Canadian Pacific Coal Docks.

The Fort William Coal Docks.

The Murphy Coal Docks.

Besides these docks, there are the Ore Docks and Wharfage and Handling Facilities for all branches of Marine Transportation.



HARVEST SCENE ON A SLATE RIVER VALLEY FARM, NEAR FORT WILLIAM

---

---

## SOME FACTS ABOUT FORT WILLIAM

---

---

### DISTRICT AGRICULTURAL PRODUCTS

Farmers in Fort William's Agricultural District have time and again won Government and Municipal Fair Prizes for Yields and Quality. The World's Record for Potato Yields is held by a farmer in this district.

Some of the Grains and Roots that produce good Crops here are: Hay, Oats, Barley, Wheat, Alfalfa, Potatoes, Turnips, Mangolds, Carrots, Beans, Cabbage, Celery.

Stock-raising is in its infancy but promises to become one of the district's big industries in the near future.

### LUMBER AND MINERALS

The timber resources of the Fort William district have been worked for the last 25 years, but there are yet large tracts which have not yet been exploited by the lumberman, lying chiefly in the neighborhood of Lac des Mille Lacs and Savanne, where there is timber equal to any that has ever been cut in the district. Its resources in pulpwood, if scientifically developed, are practically inexhaustible. Spruce forests and stretches of poplar and other timber which is being found capable of use as pulpwood extend practically from one end of the district to the other.

There are few districts that present so varied a field to the miner and prospector. Gold discoveries were made in many districts. Large deposits of iron are also found throughout the district, there being ores of every kind, from the extension of the hematite deposits from Minnesota through the southern section of this district, to the magnetic ores of Atikokan and the low grade, but massive deposits of the Mattawan. Near Kasha-bowie copper ores similar to the ores of British Columbia are found, and native copper is also found to exist. Of the rarer metals, molybdenum is the one which has attracted most attention. The district is rich in clays, shales, marls and calcites.



KAKABEKA FALLS, THE BEAUTIFUL,  
one of Fort William's most picturesque of scenic assets

---

## FORT WILLIAM'S PEOPLE

Fort William has one of the most cosmopolitan populations of the North American Continent. Twenty-seven distinct dialects are spoken in its foreign quarter, but, thanks to an efficient system and teachers, all these races and their children are being rapidly Canadianized. The makers and builders of Fort William hail from all parts of Canada, United States and the British Isles. Democracy is Fort William's middle name. There is no room for snobbery within the borders of this busy urban center of the Great North Country, where a man is judged not by what he has been, or what he thinks he is, but by **What He Can Do!** Those who come to Fort William in the spirit of doing better by themselves and the world in general stay and prosper.

---

---

## SOME FACTS ABOUT FORT WILLIAM

---

---

### POINTS OF INTEREST

---

**Indian Village.** Street Car service carries you for a five cent fare from any part of the city to the Indian Mission beyond west Fort William—a point of rare interest for visitors. The Mission is inhabited by Objibwas, retaining many of their tribal customs.

**McKay's Mountain.** (Annikee Wauchoo) Picturesque mountain, at the foot of which Fort William City is built. 1600 feet above sea level. Base can be reached by street car. Summit can be reached by a well defined Indian trail. View from the summit on a clear day is magnificent.

**Kakabeka Falls.** Perhaps Kakabeka Falls has more visitors per year than any other beauty spot in the North. Though narrower, it is said to be more picturesque and awe-inspiring than Niagara. Can be reached by motor car or train from Fort William.

**Murphy Park.** Natural park on a plateau overlooking a little picture lake. An ideal spot to spend a Sunday, amidst picturesque and restful scenery. Can be reached by Parkline & Mountainview Cars from any point in the city.

**Silver Islet.** A Summer Resort, built on the site of what was once the richest Silver Mine in the World, many of the old landmarks being preserved. Teems with historical interest. Has mountains, picture lakes, brook, golf course and bathing beach. Can be reached by the Island boat which makes regular trips.

Besides the above there are innumerable pleasure trips possible, including winding picturesque Rivers navigable by motor boat, several City Parks, the Harbor and lake trips to innumerable Islands and delightful Bays.

---

---

**SOME FACTS ABOUT FORT WILLIAM**

---

---

**INDUSTRIAL OPPORTUNITIES  
IN FORT WILLIAM**

---

Vegetable Evaporating Plant.  
Stave, Barrel and Box Factory.  
Pyrites Chemical Works.  
Custom Smelter. Blast Furnace.  
Steel Works. Soil Pipe Plant. Drain Pipe.  
Tile Works. Brass Foundry.  
Vitrified (paving) Brick Works.  
Biscuit Factory. Sugar Refinery.  
Nail Mill. Fence Factory. Pulp Mill.  
Radiator and Furnace Foundry.  
Elevator Machinery Plant.  
Malleable Foundry. Pipe Fittings Foundry.  
Stove Works. Steel Castings Plant.  
Car, Locomotive and other Springs.  
Concrete and Stone Working Plant.  
Ship Equipment. Railway Supplies.  
Ore Docks.



# Fort William Canada

**THE GREAT  
INLAND PORT  
THROUGH IT  
CANADA'S GRAIN  
MUST PASS  
ON IT'S WAY  
TO MARKETS  
OF THE WORLD**



**COMPLIMENTS OF  
FORT WILLIAM BOARD OF TRADE**

