

Technical and Bibliographic Notes / Notes techniques et bibliographiques

The Institute has attempted to obtain the best original copy available for filming. Features of this copy which may be bibliographically unique, which may alter any of the images in the reproduction, or which may significantly change the usual method of filming, are checked below.

L'Institut a microfilmé le meilleur exemplaire qu'il lui a été possible de se procurer. Les détails de cet exemplaire qui sont peut-être uniques du point de vue bibliographique, qui peuvent modifier une image reproduite, ou qui peuvent exiger une modification dans la méthode normale de filmage sont indiqués ci-dessous.

Coloured covers/  
Couverture de couleur

Coloured pages/  
Pages de couleur

Covers damaged/  
Couverture endommagée

Pages damaged/  
Pages endommagées

Covers restored and/or laminated/  
Couverture restaurée et/ou pelliculée

Pages restored and/or laminated/  
Pages restaurées et/ou pelliculées

Cover title missing/  
Le titre de couverture manque

Pages discoloured, stained or foxed/  
Pages décolorées, tachetées ou piquées

Coloured maps/  
Cartes géographiques en couleur

Pages detached/  
Pages détachées

Coloured ink (i.e. other than blue or black)/  
Encre de couleur (i.e. autre que bleue ou noire)

Showthrough/  
Transparence

Coloured plates and/or illustrations/  
Planches et/ou illustrations en couleur

Quality of print varies/  
Qualité inégale de l'impression

Bound with other material/  
Relié avec d'autres documents

Continuous pagination/  
Pagination continue

Tight binding may cause shadows or distortion along interior margin/  
La reliure serrée peut causer de l'ombre ou de la distorsion le long de la marge intérieure

Includes index(es)/  
Comprend un (des) index

Title on header taken from:/  
Le titre de l'en-tête provient:

Blank leaves added during restoration may appear within the text. Whenever possible, these have been omitted from filming/  
Il se peut que certaines pages blanches ajoutées lors d'une restauration apparaissent dans le texte, mais, lorsque cela était possible, ces pages n'ont pas été filmées.

Title page of issue/  
Page de titre de la livraison

Caption of issue/  
Titre de départ de la livraison

Masthead/  
Générique (périodiques) de la livraison

Additional comments:/  
Commentaires supplémentaires:

This item is filmed at the reduction ratio checked below/  
Ce document est filmé au taux de réduction indiqué ci-dessous.

10X	12X	14X	16X	18X	20X	22X	24X	26X	28X	30X	32X
<input type="checkbox"/>	<input type="checkbox"/>	<input type="checkbox"/>	<input type="checkbox"/>	<input type="checkbox"/>	<input type="checkbox"/>	<input type="checkbox"/>	<input type="checkbox"/>	<input type="checkbox"/>	<input checked="" type="checkbox"/>	<input type="checkbox"/>	<input type="checkbox"/>

# CANADIAN CONTRACT RECORD

A WEEKLY JOURNAL

PUBLIC WORKS • TENDERS •  
ADVANCE INFORMATION •  
AND MUNICIPAL PROGRESS

EVERY WEDNESDAY

This paper reaches every week the Town and City Clerks, Town and City Engineers, County Clerks and County Engineers Purchasers of Municipal Debentures and leading Contractors in all lines throughout Canada.

VOL. 11. APRIL 4, 1900 No. 10

**THE CANADIAN CONTRACT RECORD,**  
PUBLISHED EVERY WEDNESDAY  
As an Intermediate Edition of the "Canadian Architect and Builder."  
Subscription price of "Canadian Architect and Builder" (including "Canadian Contract Record"), \$2 per annum, payable in advance.  
**C. H. MORTIMER PUBLISHING COMPANY**  
of Toronto, Limited.  
Publishers.  
CONFEDERATION LIFE BUILDING, TORONTO.  
Telephone 2562.  
Branch Office:  
New York Life Insurance Building, Montreal.  
Bell Telephone 2299.  
Advertising Rates on application.

## Tenders for STREET SWEEPING MACHINE

Sealed tenders, addressed to the Chairman Committee on Works, Winnipeg, Canada, for the delivery of one (1) STREET SWEEPING MACHINE, will be received at the office of the undersigned up to  
**TUESDAY, MAY 1, 1900.**

Parties tendering must send with their tender a full description of the machine tendered on, giving dimensions and weight, and materials of which their machine is constructed, with other information as will enable the committee to judge as to the merits of the various machines submitted.  
The machine is to be delivered f.o.b. cars Winnipeg, duty free, not later than the 1st June, 1900.  
Each tender must be accompanied by an accepted cheque or draft for the sum of \$50.00, which will be subject to forfeiture in case of failure on the part of the contractor to enter into a written contract if called upon to do so. If an accepted cheque is submitted it must be payable at par in Winnipeg, or be for an amount sufficient to cover exchange.  
The city reserves the right to reject any or all tenders, or to accept any one which appears advantageous to the City of Winnipeg.

**C. J. BROWN,**  
City Clerk.  
City Clerk's Office,  
Winnipeg, April 2, 1900.

## NOTICE TO CONTRACTORS

Sealed tender, addressed to Robert Hall, Esq., Chairman of the Committee on Sewers, in care of the City Clerk of Brantford, will be received till 12 o'clock, noon, on

**FRIDAY, APRIL 13TH, 1900,**

for the construction of a 9-inch sewer on Henrietta, Pearl and Sydenham Streets, in the city of Brantford. Length of sewer, 1296 feet.  
Plans, specifications and form of contract may be seen and instructions to bidders and forms of tender obtained at the office of the City Engineer.  
A marked cheque, payable to the order of the City Treasurer, for the sum of 5 per cent. of the value of the work tendered for, must accompany each and every tender, otherwise they will not be entertained.  
The lowest or any tender not necessarily accepted.  
**T. HARRY JONES,**  
City Engineer.  
City Engineer's Office, Brantford, April 2nd, 1900.

## TENDERS FOR PAVEMENTS AND SIDEWALKS

Tenders will be received, by registered post only, addressed to the Chairman of the Board of Control, City Hall, Toronto, up to noon on **WEDNESDAY, APRIL 11, 1900,** for the following works:

### BRICK PAVEMENTS:

Front street, from York street to Simcoe street.  
Niagara street, from Bathurst street to King street.

### CEDAR BLOCK PAVEMENT

Metcalfe street, from Winchester street to Amelia street.

### MACADAM ROAD:

St. Mary street, from Yonge street to west end.

### BRICK PAVEMENT ON TRACK ALLOWANCES.

Queen street, from Gwynne avenue to Roscavalles avenue.  
Bathurst street, from King street to Queen street.  
Spadina avenue, from Knox College crescent to Bloor street.

### CONCRETE SIDEWALKS:

Elgin avenue, south side, from Avenue road to Bedford road.  
Lowther avenue, north side, from Spadina road to Madison avenue.  
Huron street, west side, from Lowther avenue to Bernard avenue.  
Hazelton avenue, west side, from Yorkville avenue to Davenport road.  
Howland avenue, both sides, from Bloor street to Barton avenue.  
Huron street, east side, from Lowther avenue to Bernard avenue.

### CONCRETE ON TRACK ALLOWANCE.

Sherbourne street, from Bridge to South drive.  
Contents of envelopes containing tenders must be plainly marked on the outside.

Specifications may be seen and forms of tender obtained at the office of the City Engineer, on and after Monday, April 2nd, 1900.  
A deposit, in the form of a marked cheque, payable to the order of the City Treasurer, for the sum of 5 per cent. on the value of the work tendered for, must accompany each and every tender, otherwise they will not be entertained.  
Tenders must bear the bona fide signatures of the contractor and his sureties, or they will be ruled out as informal.  
Lowest or any tender not necessarily accepted.  
**E. A. MACDONALD (Mayor),**  
Chairman Board of Control.  
City Hall, Toronto, March 29th, 1900.



## TENDERS FOR LAYING AND JOINTING WATER PIPES

Tenders will be received, by registered post only, addressed to the Chairman of the Board of Control, up to noon on

**Wednesday, April 11th, 1900,**

for LAYING AND JOINTING WATER PIPES for the year ending 31st of December, 1900.

Contents of envelopes containing tenders must be plainly marked on the outside.  
Specifications may be seen and forms of tender obtained at the office of the City Engineer, Toronto.  
A marked cheque, payable to the order of the City Treasurer, Toronto, for 2½ per cent. of the amount tendered for, must accompany each and every tender, otherwise it will be ruled out as informal.  
The lowest or any tender not necessarily accepted.

**E. A. MACDONALD (Mayor),**  
Chairman of the Board of Control.  
Toronto, March 29th, 1900.

### DATE OF PUBLICATION.

Architects, Engineers, Municipal Authorities and others are reminded that the **CONTRACT RECORD** is printed every Tuesday afternoon, and that advertisements should reach the office of publication not later than 2 o'clock p.m. on that day to ensure insertion in the issue of the current week. Advertisements are frequently received too late for insertion, to avoid which special attention is directed to this announcement.

**P. D. Laird and H. Ford** have formed a partnership as contractors and builders at Deloraine, Man.

## Debentures for Sale

Sealed tenders, marked "Tender for Debentures," addressed to Malcolm Stalker, Esquire, Mayor, Walkerton, will be received until

**Monday, the 23rd Day of April, 1900,**

at the hour of seven p.m., for the following Town of Walkerton Debentures, viz:  
1st. Tenders for \$6,800.00 Waterworks and Sewer Debentures, interest four per cent. per annum, issued on instalment plan, payable in thirty annual payments.  
2nd. Tenders for \$7,478.22 Consolidated Debt Debentures, interest five per cent., payable half-yearly on 1st January and July each year, and principal payable on 1st January each year, issued under 53 Vict. Chap. 107.

Tenders will be received for both or either of the above issues and tenderers are requested to state a bulk amount payable on 23rd April. The said Debentures will be delivered at Walkerton to the party whose tender may be accepted within 10 days from receiving and opening tenders. The highest or any tender not necessarily accepted. All information required will be furnished on application to William Collins, Esquire, Town Treasurer.  
Dated this 2nd day of April, 1900.

**W. S. GOULD,**  
Town Clerk.

### CONTRACTS OPEN.

**MEKIWIN, MAN.**—Wm. Milne, of this place, has invited tenders for erection of a brick church.

**BRACEBRIDGE, ONT.**—The council will likely install an electric power plant and a fire alarm system.

**DALHOUSIE, N. B.**—C. V. Champion & Sons will make repairs and alterations to the Reid mill here.

**FREDERICTON, N.B.** It is probable that some steps will be taken to build a summer hotel here.

**RENFREW, ONI.**—The congregation of the Presbyterian church contemplate building an addition.

**TRURO, N.S.**—An act relating to sewerage in this town has passed the provincial legislature.

**CORUNNA, ONT.**—Mrs. Noble, of Detroit, is arranging for the building of a summer cottage here.

CANNINGTON, ONT.—The village council is about to take over and remodel the electric light plant.

ALBERTON, P.E.I.—A refrigerator for the purpose of freezing bate for the fishermen will be built here.

DIGBY, N.S.—Tenders for building a fire hall are invited by the town. C. Jamison is town clerk.

STRATHALLAN, ONT.—East Zorra council will either repair the old road machine or purchase a new one.

CHARLOTTETOWN, P. E. I.—A new laundry will be installed in the Prince Edward Island hospital.

GUELPH, ONT.—R. Simpson & Co., wholesale tea importers, will build an addition to their premises.

LISTOWEL, ONT.—It is the intention of J. C. Hay to rebuild the gas works and install an up-to-date plant.

MOOSE CREEK, ONT.—The congregation of Knox church, Roxborough, intend erecting a new church.

NANAIMO, B. C.—A movement is on foot to construct a railway from Wellington to north end of the island.

VARNEY, ONT.—John Kerr has invited tenders for erection of school house in S. S. No. 1, Egremont and Normandy.

STURGEON FALLS, ONT.—The Lloyd Syndicate, of London, England, purpose erecting a large sulphite pulp mill at once.

SUNDERLAND, ONT.—Dr. McDermott will rebuild the Brock House.—An electric light plant may be established here.

LANDSDOWNE, ONT.—The Merchants' Bank will remodel the stone building opposite the post office for use as a bank.

WALKERTON, ONT.—It is proposed to establish a binder twine factory here. L. C. Higgins, of Montreal, is the promoter.

LINDSAY, ONT.—The town council will be asked to submit a by-law to the ratepayers to provide funds for a new fire hall.

IROQUOIS, ONT.—There is talk of dividing the school section at Dundee and erecting a new building at Hamilton's corners.

INGERSOLL, ONT.—The council has decided to grant a railway franchise to the Ingersoll Radial Electric Railway Company.

PETERBORO, ONT.—The George Matthews Co. will build an addition to their pork packing establishment, 40 x 80 feet, four storeys.

ORILLIA, ONT.—It is probable that the rooms in the Rogers block vacated by the public library will be remodelled for council purposes.

TIVERTON, ONT.—Tenders will be received up to 15th inst. for a new Methodist church here. Plans at Mr. Fawcett's hardware store.

WELLAND, ONT.—The council has authorized tenders to be invited for sewer pipe.—The town still has \$14,000 of debentures for sale.

SMITH'S FALLS, ONT.—The question of raising \$10,125 for enlarging the Elgin street school will be submitted to a vote of the ratepayers.

PORTAGE LA PRAIRIE, MAN.—It is expected that work will shortly be commenced on the proposed bridge over the Assiniboine river.

LURGAN, ONT.—Tenders will be received up to April 21st for veneering with brick school section No. 1, Huron. James Brown, secretary.

BRANTFORD, ONT.—The Goold, Shapley & Muir Company purpose making additions to their building and plant, at a cost of about \$100,000.

BUCKINGHAM, QUE.—It is expected that the Dominion Government will commence the erection of proposed post office this summer.

SHERBROOKE, QUE.—Bids are invited by C. W. Cate, chairman finance committee, up to 12th inst., for \$100,000 of 40 year 3½ per cent. debentures.

MORRISTON, ONT.—Tenders will be received until Wednesday, 4th inst., for the stone and carpenter work of a barn. R. D. Morison, secretary.

BRADFORD, ONT.—The factory of Mickle, Dymont & Sons will be enlarged.—The erection of a residence is contemplated by Dr. L. H. Campbell.

MEAFORD, ONT.—Tenders are wanted by 10th inst. for erection of brick school house for Section No. 9, St. Vincent. Particulars from Wm. Storey.

CHATHAM, ONT.—J. W. Carswell, architect, wants bids by the 4th inst. for erection of three brick veneered residences and one brick veneered convent.

COLLINGWOOD, ONT.—The ratepayers voted almost unanimously in favor of granting a bonus of \$125,000 for the establishment of a blast furnace here.

CACHE BAY, ONT.—Engineers have been surveying a proposed line of railway north from here to Lake Temagami, supposed to be in the interests of the C. P. R.

DUNDAS, ONT.—Architect Brass, of Hamilton, has reported with regard to the ventilation of the school buildings. The cost of improvements range from \$250 to \$900.

NEW GLASGOW, N.S.—The New Glasgow Milling Company is applying for a new charter. The company intend erecting mills at St. John, Halifax, and this place.

MABOU, C.B.—Bids for erection of creamery, 30 x 72 feet, and engine house, 18 x 22 feet, are invited by J. H. Cameron, of this place, up to 6th inst. Plans by H. S. Pearson.

HUNTSVILLE, ONT.—Captain Thomas Llwyd intends erecting a residence.—Crump Bros. want tenders by 5th inst. for addition to Ronville summer resort at Lake of Bays.

ST. JOHN, N. B.—Several new hydrants will likely be put in by the city.—Tenders closed on Monday for the supply to the city of two steam fire engines and a ladder truck.

WOODSTOCK, ONT.—T. G. Wallace, representing the Ickes & Armstrong Syndicate, states that the work of constructing an electric railway will be commenced within six weeks.

STRATFORD, ONT.—The ratepayers will shortly vote on a by-law to guarantee the bonds of George McLagan to the extent of \$30,000, to assist him in erecting a furniture factory.

ST. CATHARINES, ONT.—The heating apparatus in the Collegiate Institute is defective, and the trustees have asked the council for \$5,000 to install a modern heating and ventilating plant.

NEW WESTMINSTER, B. C.—It is understood that Alex Ewen will shortly rebuild the old Douglas-Elliott block, and that Victoria parties will erect a brick block on the site of the old Lytton hotel.

GALETTA, ONT.—The plans for the church to be erected by the Anglican congregation, as prepared by architect Watts, of Ottawa, show a brick structure with seating capacity for over one hundred.

RAT PORTAGE, ONT.—J. K. Brydon will receive tenders up to 5th inst. for erection of stone block, corner Main and Fort streets.—The town council is considering the advisability of purchasing a stone crusher.

PORT ARTHUR, ONT.—Plans have been completed of proposed additions to the hospital of the Sisters of St. Joseph; estimated cost \$10,000.—The C. P. R. propose building here a number of cottages for their employees.

LEAMINGTON, ONT.—The Wagner-Fenton Tobacco Co will immediately commence the erection of a building, to be two storeys, 40 x 100 feet, with separate brick engine room 20 x 22 feet. Architect Maycock is preparing the plans.

KINGSTON, ONT.—D. A. Cays has sold three lots at corner of Union and Frontenac streets. The purchaser intends building thereon.—The council has appointed a committee to confer with the authorities of Queen's University regarding the furtherance of plans for new buildings.

TORONTO JUNCTION, ONT.—W. T. Stewart, electrical engineer, of Toronto, has submitted to the council his report regarding the required changes in the lighting system of the town. It is expected that, in the near future, some action towards the installation of a new plant will be taken by the council.

PARRY SOUND, ONT.—It is proposed to erect a steel bridge across the Seguin river to replace a wooden one now in use.—A new gaol, a Presbyterian church, two store buildings, and several residences, will likely be built at an early date.—A site has been purchased by the school board for a new school in the east ward.

LONDON, ONT.—A project is on foot to build an electric railway from this city to Port Stanley.—William Joanes, architect, has taken tenders on an addition to the Home for Incurables.—The directors of the Masonic Temple Company have accepted the plans of Moore & Henry, architects, for the reconstruction of the Temple, and work will shortly be commenced.—The school board will spend about \$17,500 on improvements to schools.

VANCOUVER, B. C.—Parr & Fee, architects, have taken tenders for building residence on Comox street for Wm. Hickey.—It is the intention of H. A. Bell to build a brick and stone block on Granville street.—The site is being prepared for the new sanatorium to be built on the corner of Georgia and Hornby streets.—The Stave Lake Power Company, Limited, has been incorporated, with capital of \$1,000,000. The company have acquired a waterfall on the Stave river 42 miles from this city, and propose to generate power and transmit it to Vancouver. The hydraulic engineer for the company is Charles A. Stoess, and the electrical engineer George C. Hinton. John Hendry, manager of the Hastings saw mills, is one of the directors. The estimated cost of the work is \$500,000.—About fifty houses are to be erected in the east end of the city.

HAMILTON, ONT.—Engineer Wingate has prepared plans for improvements on Wellington, Ferry, Strachan and Simcoe streets and Ferguson avenue.—The Imperial Cotton Company, of Hamilton, is applying for incorporation, to engage in the manufacture of cotton duck. W. D. Long is one of the directors.—The cash register business of the Hamilton Brass Mfg. Co. has been purchased by the National Cash Register Co., of Dayton, Ohio. This latter company may erect a large factory in this city.—William & Walter Stewart, architects, have taken out a permit for a brick dwelling on Main street, between Sanford and Sherman avenues, to cost \$1,650.—Tenders have been taken for the National Cycle and Automobile Company's factory, but it is unlikely that contracts will be awarded within a couple of weeks.—Thomas Allan has been granted a permit for four two story brick dwellings on Augustus street, to cost \$5,000.—The Lehigh Valley Automobile Co. contemplate building a factory here.

OTTAWA, ONT.—Stephen E. O'Brien, secretary, Ottawa Improvement Commission, invites bids up to April 19th for masonry abutments, piers, and iron or steel superstructure of bridges across the Rideau river. Plans by Robt. Surtees,

C.E. A movement is on foot to have erected a white marble bust of Lord Strathcona, to be placed in the library of Parliament.—The city may raise \$25,000 by debentures to provide for the cost of improvements being carried out by the Ottawa Improvement Commission.—Assistant Engineer Ker estimates the cost of 10 miles of sewer for the drainage of the Cade property at \$79,000.—The box factory on Queen street has been purchased by local capitalists, who will install \$10,000 worth of new machinery.—The building at the corner of Sparks and Elgin streets will be remodelled to meet the requirements of the Merchants' Bank of Halifax.—Louis Simpson, late of Valleyfield, Que., is endeavoring to establish a large cotton mill in this city.

WINNIPEG, MAN.—J. H. G. Russell, architect, is calling for tenders for erection of brick and stone residence on Roslyn road, Fort Rouge, for A. M. Nanton. Same architect has plans under way for alterations and improvements to the Stobart block, Main street, for A. M. Fraser.—George Browne, architect, invites tenders up to 7th inst. for erection of stone and brick building, corner Portage avenue and Smith street, for the Y. M. C. A.—Surveys are now being made preparatory to the laying of a double track for the C. P. R. between Winnipeg and Fort William.—A deputation has asked the Provincial Government to assist the Northern Pacific Railway in building a trunk line from Portage La Prairie west.—The city will likely issue debentures to raise \$27,000 to purchase water pipe and for other purposes.—The board of works has decided to call for tenders for 1,000 feet of 6-inch sewer pipe, 500 feet 9-inch, 300 feet 12-inch, 1,000 feet 15-inch, 600 feet 18-inch, and 500 junctions.—The question of building a hall for public meetings is under consideration by the council.

MONTREAL, QUE.—It has been decided that the proposed C.P.R. Telegraphs building, to be constructed at corner of Hospital and St. Francois Xavier streets, will be five storeys high.—The Liverpool & London Insurance Co. intend to erect a new office building on the site of their present structure. Plans will be prepared by Edward Maxwell, architect. It is improbable that work will be commenced on the building before the spring of next year.—James Kennedy, harbor engineer, has been instructed to prepare specifications for stone required for projected improvements on Commissioner street opposite Bonsecours market.—It is probable that a new civic hospital will be erected, at a cost of about \$50,000.—The plans of G. Bolvin and A. Gysens for extension of the Bonsecours market have been recommended for acceptance.—At a meeting of chairmen of the various civic committees, the expenditure of \$300,000 for permanent works was discussed. Improvements to the interior and exterior of the city hall, cost \$20,000, the James street sewer, cost \$70,000, and the extension of the McGill street sewer, cost \$80,000, formed the chief items which met with favor. It was reported that a new station in Hochelaga, and one to replace No. 9, were required.—The market committee will ask for \$17,600 for permanent works, as follows: \$2,000 for macadam in front of the market, \$2,000 for repairs to sheep stalls at the abattoir; \$2,600 for dwelling for clerk of St. Lawrence market, and \$11,000 to repair roof on the Bonsecours market.—The Kingsberry Footwear Co. will build a three storey factory at Maisonneuve. An eight horse power motor will be installed.—Work has been commenced on the new Grand Trunk offices on St. Paul street.

TORONTO, ONT.—The Sites and Building Committee of the Separate School board will ask for funds to erect fourteen new class-rooms, as follows: Two at Colton avenue, eight at St. Michael's, two at Parkdale, and four at Toronto Junction.

tion.—A proposal has been made to the city council to establish a comprehensive system of electric railways, embracing the country around Toronto between Brantford, Peterboro and the Georgian Bay. The scheme involves a total mileage of 354 miles, and an expenditure, for track and roadway only, of \$2,850,000.—The McPherson Estate are making arrangements to erect several more residences in Rosedale, to cost from \$6,000 to \$10,000 each. S. H. Townsend is architect for the estate, and H. C. Boulton is manager of building operations.—A deputation from this city will shortly go to Ottawa to urge upon the Minister of Militia the necessity of providing accommodation at the armouries for the cavalry and artillery.—The electric light specifications have passed the Board of Control and will shortly go to the City Council.—The Bay of Quinte Railway Company is seeking authority to work mines and to develop and supply electric power.—The council has given notice of its intention to construct the following works: Macadam roadway on North street, St. Mary to Bloor, cost \$3,313; pipe sewer on Columbus avenue, from Sorauen avenue west, cost \$829.50; brick sidewalks on King street, north side, Sumach to Sackville, cost \$601, and on Simcoe street, east side, Richmond to Queen, cost \$162; cement concrete sidewalk on King street, north side, Spadina avenue to Bathurst, cost \$1,824.—Plans have been prepared by Mr. Post, architect, of Buffalo, for a new college for the Community of St. Basil, whose head house for some years has been St. Michael's College. The building will be erected at Mimico, and will cost about \$75,000.—The Boston Wood Rim Company, of this city, are advertising for a site for a wood-working factory.—Building permits have been granted as follows: Caleb Evans, pair of three-storey and mansard brick and stone semi-detached dwellings on Markham street, west side, near Harbord, cost \$8,000; J. W. McMichael, two-storey and attic brick dwelling, No. 35 Howland avenue, cost \$2,800; G. W. Larkin, two storey brick clad dwelling, corner Hallam and Westmoreland ave., cost \$2,400.—At a meeting of persons interested in the establishment of a Public Art Museum in this city, a committee was appointed to take steps to secure the erection of a suitable building. Messrs. G. A. Reid and B. E. Walker are members of the committee.—A petition is in circulation favoring the conversion of the residence of Thomas Davies, corner Queen and River streets, into an hotel. Should the license be granted, Mr. Davies will erect a block of stores opposite his residence.

FIRES.

Barn and joiner's shop of the Sacred Heart hospital at Quebec, Que., loss \$3,000.—Portable saw mill of D. P. Lewis, of Westbrook, N.S.—Hardware establishment of George F. Beverley at St. John, N.B.; loss on building and stock \$10,000, small insurance.—Foundry of A. Wren & Co. at Forest, Ont.; loss \$5,000.—Smith block at Clinton, Ont.; loss \$4,000, insurance \$2,500.—Livery stable of T. O. Ferris at Windsor, Ont.; loss \$20,000. The building was owned by William McGregor, M. P.—James Drake's basket factory at Alvington, Ont.; building owned by James Armstrong.—Hotel at Sundridge, Ont., owned by Jos. Auld.—High school at Gananoque, Ont., damaged to extent of \$2,000.

CONTRACTS AWARDED.

WELLAND, ONT.—\$26,000 town debentures: Township of Wainfleet, purchasers, at \$25,000 cash.  
 HALIFAX, N.S.—Court house at St Johns, Nfld. S. M. Brookfield, this place successful tenderer; price \$140,000.  
 MONTREAL, QUE.—Piles for the Connor's elevator J & B. Grier and James Shearer & Company, successful tenderers  
 AVONPORT, N. S.—Robert Shaw, this place, has contract to supply 1,500,000 brick for the Dominion Iron & Steel Company, of Sydney.  
 PORT COLBORNE, ONT.—The Canadian Construction Co., of Montreal, is reported to have secured the contract for harbor improvements here.  
 VICTORIA, B. C.—Brick and stone building on Fisgard street for Porter Estate: H. S. Hooper, architect; Elford & Smith, contractors; price about \$9,000.  
 BRAMPTON, ONT.—James Fallas, jr., is about to build a new residence, for which the following contracts have been

**CENTRAL CANADA** LOAN AND SAVINGS COMPANY

Cor. King and Victoria Sts, TORONTO

Highest Market Prices paid for

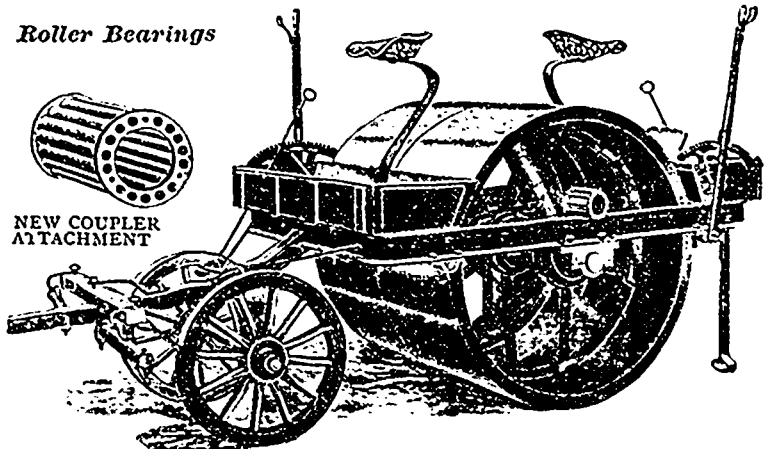
**Municipal Debentures**

F. W. BAILLIE, Secretary. E. R. WOOD, Managing Director.

**ROAD MAKING MACHINERY**

Our New Design... "CHAMPION" HORSE ROAD ROLLER  
 Furnished with either Cast Iron or Steel Drums.

Roller Bearings



NEW COUPLER ATTACHMENT

With Roller Bearings and New Patent Coupler Attachment, either 3/4, 3/2, 4 1/2 or 5 1/2 tons. All one size frame, drum, and width of tread and can be extra weighted a tons each. Address for Catalogue

**GOOD ROADS MACHINERY CO.,** John Challen, Mgr. HAMILTON, ONT

let Masonry and brickwork, J. Sewell carpentry, J. Laird.

**SHAWINIGAN, QUE.**—The Pittsburg Reduction Company is building a plant here, and has awarded to the Westinghouse Electric & Mfg. Company a contract for four generators of 1,250 h.p. each.

**LEAMINGTON, ONT.**—Proposed house of refuge. Carswell, Stevens & Moore, of Chatham, successful tenderers; hot water heating apparatus, Joseph Chambers, of London. Gurney boilers will be used.

**MOOREFIELD, ONT.**—W. E. Binning, architect, of Listowel, has let the contract for mason and carpenter work of new Methodist church to Brussels contractors, and the seating to the Valley City Seating Company, of Dundas.

**HAMILTON, ONT.**—Emerson Goodale has been awarded the contract for grading the T H & B spur line from the present road to the northeastern portion of the city. M. A. Piggott will erect the trestle over the radial railway.

**KINGSTON, ONT.**—Hot water heating of armouries: McKelvey & Birch, contractors.—Addition to Clyde terrace for Mrs. James Davis: H. P. Smith, architect; masonry, Langdon & Hamilton; carpentry, J. C. Landeryou; hot water heating, plumbing and tinsmithing, McKelvey & Birch; painting and glazing, J. McKee & Company.

**OTTAWA, ONT.**—Tenders for supplies have been awarded by the city as follows: Oils, McKinley & Northwood, \$72.50; lead pipe, Laverdure & Co., \$1,180; brass goods, Knox Bros., \$626; hydrants, valves, etc., Thomas Lawson, \$1,061.25; special castings, Thomas Lawson, 2 4-10 cents per lb.; iron pipe, Alex. Fleck, \$8,288; fire alarm supplies, Ahearn & Soper, \$580.78; hardware, McDougall & Cuzner, \$42.60.—Warehouse for James W. Woods: James Mather, architect; Felix McCullough, contractor. Building will be four storeys, brick, cost \$14,000.—New front and tower for Sacred Heart church: Joseph Bourque, contractor, cost \$27,000.

#### BUSINESS CHANGE.

The business of the St. Lawrence Foundry Company of Toronto, which was established in 1850, has been taken over by the Canada Foundry Company, Limited, a strong corporation with a capital of \$1,000,000. The company will devote its attention to the manufacture of architectural iron, waterworks supplies, etc. The directors include: W. D. Matthews, president; Frederic Nichols, vice-president; T W Horn, managing director; W. R. Brock and E. B. Osler, M.P. Toronto; Wm. Hendrie, Hamilton; Sir Wm. Van-Horne and H. S. Holt, Montreal, and W. H. Winslow, Chicago. Mr. A. Oakley is secretary of the company, Mr. L. E. Hinkley superintendent, and Mr. H. J. Hamilton chief of sales department. The office and works are situated at 262-278 Front street east.



#### PROVINCIAL DRAINAGE AID ACT.

Following is a copy of the Bill entitled "The Provincial Drainage Aid Act," which has been introduced in the Ontario Legislature by Hon. Mr. Russ.

Whereas the Legislature of the Province of Ontario has from time to time passed various Acts for the purpose of enabling municipalities to provide drainage works by local assessment for the removal of surface water from wet, marsh and low-lying lands, and discharging such waters through such drainage works by gravitation, pumping or other mechanical means into natural outlets in lakes, rivers and streams; and whereas many municipalities have taken advantage of the said Acts and by so doing have rendered the lands in such localities much more productive and valuable, but in some cases where the main channel for the conveying and discharging of the water is a natural stream, creek or water-course, either in its natural condition or as artificially improved, or is wholly artificial, or where throughout the course of the drainage work high lands exist, so that the cuttings of the work, together with the length or extent of the work, are of such a magnitude as to render the cost of the construction, reconstruction or maintenance of the drainage scheme too great a burden upon the owners of the lands assessed therefor; and whereas in consequence of the want of carrying capacity for the waters and the defective nature of the outlets reached, lands are insufficiently drained, damages are caused by overflow and litigation has been resorted to, to compel municipalities to

(Continued on page 6.)

## Notice to Contractors

WE can save you money on.....

### Granolithic or Crushed Stone

of any size, as we have the most complete plant in Canada. You will consult your own interests by getting our prices. We also make a specialty of Slate, Limestone, Granite and all kinds of Stone. Crusher at Jarvis street wharf.

THE POWELL GRANITE & MARBLE CO'Y,  
Phone 3440. Office, 482-484 Yonge St., Toronto

## ARTIFICIAL STONE PAVEMENTS

SIDEWALKS A SPECIALTY

CORPORATIONS Will do well to consider our work and prices before letting contracts

The Silica Baritic Stone Company  
of Ontario, Limited.

WALTER MILLS, General Manager. Head office: INGERSOLL, ONT.

## ORE AND STONE CRUSHERS

HOISTING MACHINERY  
RAILWAY SUPPLIES  
BOILERS AND ENGINES

Prices furnished on application

MARSH & HENTHORN,  
BELLEVILLE, ONT.

## Sicilian ROCK ASPHALT

Rock Asphalt Powder and  
Rock Asphalt Mastic, for street  
paving.

Contractors, write us for  
close prices.

GEORGE W. REED & CO.

783 and 785 Craig Street, MONTREAL

Please mention the CONTRACT RECORD  
when corresponding with advertisers.

## THE PHOENIX BRIDGE & IRON WORKS

MANUFACTURERS OF STAY BOLTS AND ALL KINDS OF RIVETS

STEEL AND IRON STRUCTURAL AND ARCHITECTURAL WORK

Beams, Channels, Angles and  
Teas always in stock.

29 to 49 McGill Street,

P.O. Box 893.

MONTREAL

Prices on Application.

## THE CADWELL SILEX STONE CO'Y

SILEX STONE WALKS } A SPECIALTY  
CURBINGS }

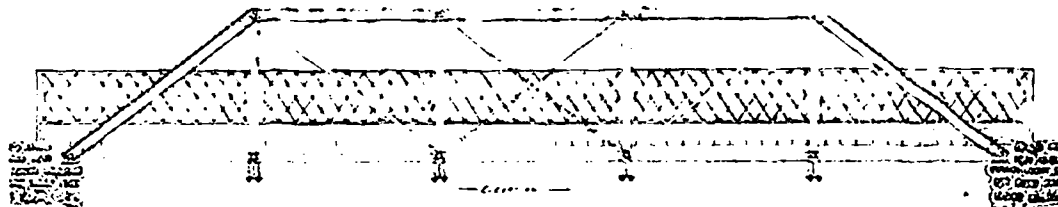
TO CORPORATIONS.—Our 10 years' experience in Building  
Walks and Grading enables us to save the expense of an en-  
gineer in small towns where one is not regularly employed

C. W. CADWELL, Manager  
WINDSOR, ONT.

## THE HAMILTON BRIDGE WORKS CO., LIMITED, HAMILTON, CANADA

Manufacturers of

### STEEL RAILWAY AND HIGHWAY BRIDGES

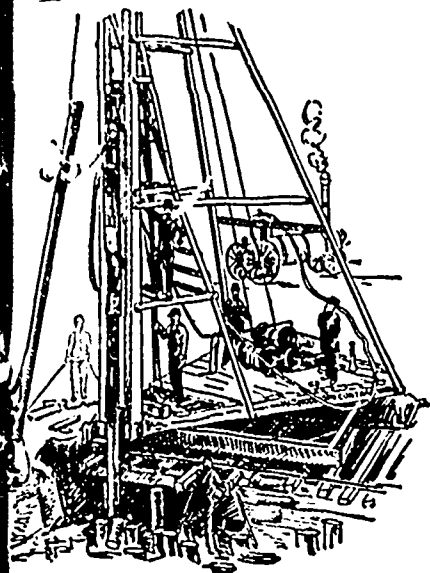


Beams, Channels, Angles and Tees always in Stock.

Steel Roofs  
and Every Description of  
Steel Lattice  
and Girder Work

Estimates Furnished  
on Application

MUNICIPAL ENGINEERS, CONTRACTORS AND MATERIALS



### PILE DRIVING

land or water by Steam Pile Drivers or Drop Hammers.

Portable Boilers  
Hoisting Engines  
Pumping Machinery  
**TO LET**

Bridge Building, Trestle Work, Wharves,  
Dams, Diving Submarine Work and  
General Contracting.

**WM. HOOD & SON**

10 Richmond Sq. - MONTREAL

### DEBENTURES BOUGHT

Municipalities saved all possible trouble  
by applying to

**G. A. STIMSON & CO.**

Investment Dealers

24 and 26 King St. W. - TORONTO

### Paving Granite

Granite Sets for Street Paving. - CURBING cut  
to any shape ordered. - Fine Rich Colors for  
Building and Monumental Purposes.

Quarries, St. Philippe d'Argenteuil, P. Q.

Address all communications to

**JOS. BRUNET - COTE DES NEIGES, MONTREAL**

Please mention the CONTRACT RECORD  
when corresponding with advertisers.



THIS Preparation is used for the following purposes,  
Prevention of Dry Rot, Fungus, Decay and the at-  
tack of White Ant and Termites in Timber, Preser-  
vation of Beams, Sills, Flooring, Wainscoting, Shingles, Wood  
Curbing, Sidewalks, Slat-walks, and Block Pavements.  
Preparation for sale or Timber treated at Factory,  
Corner Shaw Street and C. P. R. Track,  
Circulars sent of Application. Tel. 978.

## Engineering Contract Company

Main Office:  
EMPIRE BUILDING, 71 BROADWAY, NEW YORK  
HENRY F. DUCK, MANAGER FOR CANADA.

Canadian Office:  
TEMPLE BUILDING, TORONTO, ONT.

BRIDGE SUB-STRUCTURES, WATER POWER DAMS, CANAL WORK  
and CAISSON FOUNDATIONS a Specialty

### PORTLAND CEMENT

**Samson Brand**

**Magnet Brand**

MADE AT SHALLOW LAKE, ONTARIO

Our celebrated SAMSON BRAND has been before the public for many years, and has made hosts of friends  
among Contractors and Municipal Corporations and it has become one of the leading Cements on the market to-  
day, being excelled by none. This year we have decided to place the MAGNET on the market, and respectfully  
ask consumers to give it a trial. It will, we think, do its own advertising.

Correspondence invited.

**GEO. S. KILBOURN, Secretary-Treasurer.**

WORKS: Shallow Lake, Ont. - HEAD OFFICE: Owen Sound, Ont.

## Dominion Bridge Co., Ltd.

P. O. Address, MONTREAL, P. Q.  
Works at LACHINE LOCKS, P. Q.

## STEEL BRIDGES

For Railways and Highways

Piers, Trestles, Water Towers  
Tanks, Buildings, Roofs, Girders,  
Beams and Columns

Toronto Agent: **GEO. B. EVANS,**  
38 Canada Life Bldg., TORONTO, ONT.

## W. & F. P. CURRIE & CO.

MONTREAL

Importers of

SEWER PIPES,

CHIMNEY TOPS,

VENT LININGS,

FLUE COVERS,

FIRE BRICKS,

FIRE CLAY,

WHITING.



PORTLAND CEMENTS,

HIGH GRADE ENGLISH

B. S. & Co. "ANCHOR,"

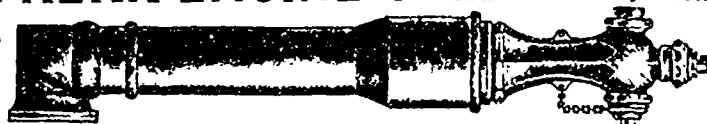
ALSO OTHER BRANDS,

PLASTER OF PARIS

BORAX,

CHINA CLAY.

## The KERR ENGINE COMPANY, Limited



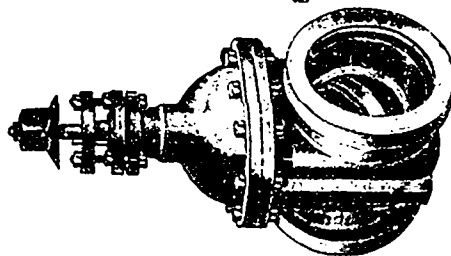
We Manufacture

**WATERWORKS PUMPS**

**HYDRANTS AND WATER GATES**

Write for Quotations.

WALKERVILLE, - ONTARIO



## THE CANADIAN SEWER PIPE CO.

MANUFACTURERS OF . . .



- FOR -  
**SEWERS,**  
CULVERTS  
AND  
WATER PIPES.  
**INVERTS**  
For Brick Sewers

Write for Discounts  
ST. JOHNS, HAMILTON, TORONTO,  
P. Q. ONT. ONT.



provide sufficient capacity for the conveyance and discharge of the waters into such an outlet as will cause no damage to adjoining lands; and whereas the sum of ten million dollars more or less has been expended in the construction and maintenance of such drainage schemes, and large sums of money, in addition to private expenditure, have been loaned by the Legislature of the Province of Ontario for the construction of tile or under drainage, and as the best results have not and cannot be realized from such expenditure without providing an effective main channel for the removal and safe discharge of all waters conveyed by such under drainage and the branches or laterals of the main channel, it is expedient that the Legislature in the public interest should grant such aid as will assist in improving and perfecting the principal outlet for such water, and whereas on account of the great expense of providing the main channel with sufficient depth, and with sufficient capacity to produce the best results from under drains, award drains and drainage works constructed by by-laws, many municipalities have been wholly unable to undertake and carry out, at the expense of the lands interested, such works as will perfect the whole drainage system within the watershed, and thus render it most effective in the drainage of the lands and in the cultivation and value thereof; and whereas numerous large tracts of submerged lands have been reclaimed by embanking and rimping and other mechanical means to the great advantage of the Province, although in some cases the results of the work undertaken for such purposes are not satisfactory because of insufficient outlet; and whereas the intention of this Act is not in any way to interfere with any of the provisions of the Municipal Drainage Act, or of any other Acts relating to the removal of surface water, but on the contrary to supplement the provisions of the said act so as to encourage and assist the construction and reconstruction of the main channels and pumping or artificial outlets in cases where the le-ying of the costs required to provide the same would be greater than the lands interested therein or affected thereby could be reasonably expected to bear.

Therefore Her Majesty, by and with the advice and consent of the Legislative Assembly of the Province of Ontario, enacts as follows:

1. This Act shall apply to that portion of the trunk channel constituting the outlet of any drainage work as defined by The Municipal Drainage Act and of any drainage works now constructed or hereafter to be constructed for effecting drainage by embanking, pumping or other mechanical means.

2. The provisions of this Act shall be applicable to the construction or reconstruction of any drainage work mentioned in the next preceding section hereof.

3. The council of the municipality

initiating the construction or reconstruction of any drainage work as above described shall be the applicant for aid to the Lieutenant-Governor of the Province of Ontario in any case where assistance is sought.

4. The application shall be by way of petition and shall set forth the engineer's report on the proposed work after adoption by the council initiating the work, the assessments upon the lands interested therein or affected thereby and the cash value of the lands so assessed and in parcels as described by the engineer in making his assessment, and such petition shall be verified by the statutory declaration of the engineer employed by such municipality to make the report, and a field plan of the proposed work shall be furnished with the petition.

5. Should the said report and field plan

show that the proposed work was being undertaken for any of the following purposes: (a) To provide or improve that portion of the trunk channel constituting the outlet for the drainage work; (b) to furnish capacity over intervening high lands to a natural or other outlet, (c) to render more effective the operating of a drainage work by embanking, pumping or other mechanical means; and in every such case the Lieutenant-Governor in-Council may cause an examination of the drainage work referred to in the petition and field plan to be made by an engineer of the Public Works Department, whose duty it shall be to report fully upon the contemplated work and all matters connected therewith, and upon his report the Lieutenant-Governor-in-Council may assume and pay such proportion of the cost of the undertaking as may seem just and reasonable and in the public interest and as may be approved by the Legislative Assembly.

This Act may be known and cited as The Provincial Drainage Aid Act.



**"BEAVER" PORTLAND CEMENT**

A HIGH GRADE PORTLAND CEMENT

Manufactured by . . . . . THE BEAVER PORTLAND CEMENT CO., LIMITED - WORKS: MARLBANK, ONT.

SOLE SALES AGENT: **COMMERCIAL WOOD & CEMENT COMPANY**  
Canada Life Building, Montreal.

Largest Works in Canada.

Write for Prices.

**BELLHOUSE, DILLON & CO.,** 30 St. Francois Xavier St., Montreal

Sole Agents for the Compagnie Generale des Asphaltes de France (Rock Asphalt).

**PORTLAND CEMENT NORTH'S CONDOR**

Paving and Fire Brick a Specialty

"DYCKERHOFF" and "WHITE CROSS" Brands

NORTH'S "CONDOR" BRAND AWARDED FIRST PRIZE AND GOLD MEDAL AT THE ANTWERP EXHIBITION

**THE GEORGIAN BAY PORTLAND CEMENT CO. LIMITED**

OWEN SOUND, ONT.

These works are furnished with the latest and best machinery. The raw materials are of first-class quality. The process of manufacture is well tried and successful, and operated by experienced experts. The product is the finest grade of PORTLAND CEMENT. For further information write

**J. W. MAITLAND, Sec.-Treas.**

**McGREGOR & McINTRYE**

**STRUCTURAL IRON WORKS**

Trolley Pole Brackets; Electric Light Arms; Prison and Jail Cells; Fire Escapes; Automatic Fire Shutters and Doors; Iron Sidewalk Doors, &c.

We Stock BAR IRON, BAR STEEL, STEEL ANGLES, CHANNELS, Etc. † 65 to 71 Pearl St., TORONTO, ONT.



**"GERMANIA" BRAND**

HIGHEST CLASS PORTLAND CEMENT

McGILL UNIVERSITY TESTS, 1898:

Fineness:—residue on 100 sieve, 4.45%.  
Tensile strength: neat: 7 days, 629 lb.  
" " " 28 " 773 lb.

—OF ALL FIRST CLASS DEALERS.—



**"BURHAM" BRAND**

THE BEST LONDON PORTLAND CEMENT

As used for the following work: Kewatin Power Co.'s dam at Lake of the Woods, Canada Paper Co.'s dam at Windsor Mills, Government Brew works, Buffalo; Dry Docks, Brooklyn and League Island, Hudson River Tunnel and a vast amount of railway work, and mileage of Street Paving throughout Canada and the States.

OF ALL FIRST CLASS DEALERS.

**MUNICIPAL DEBENTURES BOUGHT**

**AMELIUS JARVIS & CO.** (Toronto Stock Exchange) 32 King St. West, TORONTO

MUNICIPAL ENGINEERS, CONTRACTORS AND MATERIALS

**WILLIS CHIPMAN**

Hon. Grad. McGill University.  
M. Can. Soc. C.E. M. Am. Soc. C.E.  
Mem. Am. W.W. Ass'n.  
WATERWORKS, SEWERAGE WORKS, GAS  
WORKS, ELECTRIC LIGHT AND  
POWER PLANTS  
Rep'ts, Surveys, Construction, Valuations  
103 BAY STREET - TORONTO

**RODERICK J. PARKE**  
*Consulting Electrical Engineer*

MUNICIPAL ELECTRIC LIGHTING  
COMMERCIAL POWER INSTALLATIONS  
Isolated Electric Lighting and Power Plants for  
Manufactories. Estimates, Specifications, Advice  
on Tenders, Valuating.  
409-410 Temple Building, TORONTO, CANADA

**W. T. ASHBRIDGE, C.E.**

A. M. CAN. SOC. C.E.  
509 Temple Building, - TORONTO  
Special Attention given to

**MUNICIPAL IMPROVEMENTS**

Sewerage Works, Water Supply,  
Pavements, Concrete Construction, Etc.

**J. EMILE VANIER**  
**CIVIL AND HYDRAULIC ENGINEER**

(Graduate of the Polytechnic School.)  
IMPERIAL BUILDING, MONTREAL

SPECIALTIES:  
Waterworks, Sewers, both Steam and Hydraulic  
Power Plants, Foundations, Paving, etc.  
Valuations made of Waterworks Systems, Arh  
trations, etc.  
Plans and Estimates for Public Buildings

**R. E. SPEAKMAN, C.E.**

A. M. Inst. C. E., 1878.  
**CONSULTING ENGINEER**  
(LATE GALT & SPEAKMAN.)

Waterworks, Sewerage and Sewage Disposal.  
Municipal Improvements.  
Granolithic Pavements.  
Electric Light Plants.  
Drainage and Irrigation of Land.  
Coal Handling Plant and Machinery.  
Plans, Specifications and Estimates.  
Construction and Valuations.  
Canada Life Building - TORONTO

**CANADA FOUNDRY  
COMPANY, LIMITED**

Successors to { ST. LAWRENCE FOUNDRY CO.  
OF TORONTO, LIMITED.

Architectural Iron { BEAMS, COLUMNS,  
CASTINGS,  
FIRE ESCAPES.

Waterworks Supplies { PIPES,  
SPECIALS,  
HYDRANTS, VALVES.

Railway Supplies { BRAKE SHOES,  
FROGS,  
SWITCHES.

Ornamental Iron { GRILLS,  
FENCES,  
RAILINGS.

General Jobbing

OFFICE AND WORKS.  
262-278 FRONT STREET EAST,  
TORONTO, ONT.

**PORTLAND CEMENT**

For Sidewalks, Pavements, Heavy Masonry and Concrete.

MANUFACTURED BY . . .

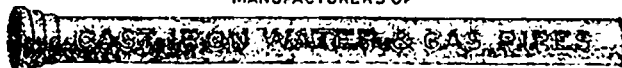
Write for Circular  
and Prices.

**The Rathbun Company**  
DESERONTO, ONT.

**Montreal Pipe Foundry Co. Ltd.**

SUCCESSORS TO  
DRUMMOND, McCALL PIPE FOUNDRY CO. LTD

MANUFACTURERS OF



SPECIAL CASTINGS  
FLANGE PIPE  
BRANCHES  
HYDRANTS  
VALVES  
VALVE BOXES

OFFICES  
CANADA LIFE BUILDING

**MONTREAL**

**LONDONDERRY PIPE FOUNDRY**

Cast Iron Water and Gas Pipes, etc.

Londonderry, Nova Scotia

ALEX. GARTSHORE, President. J. G. ALLAN, Secretary and Treasurer. JAS. THOMSON, Vice-President and General Manager

**THE GARTSHORE-THOMSON PIPE & FOUNDRY CO.  
LIMITED.**

Manufacturers of . . .

Flexible and Flange Pipe,  
Special Castings and all kinds of  
Waterworks Supplies.



3 inches to 60 inches diameter.

For Water, Gas, Culvert and Sewer

~~~~~ HAMILTON ONT. ~~~~~



# WATER WORKS PUMPING MACHINERY

We are prepared to equip Municipal or other Water-Works Plants with Pumping Machinery of the latest and most approved designs. We are the largest manufacturers of Steam and Power Pumps in Canada; they are built in all sizes and capacities, and can be implicitly relied upon wherever used. Several excellent second hand pumps in first class condition for water works service on hand at close prices.

SEND FOR CATALOGUE.

**NORTHEY MFG. CO. LIMITED**

1015 King Street, Subway,  
TORONTO, CAN.

# Portland Cements..

HIGH GRADE GERMAN BRANDS FOR GRANOLITHIC AND ARTIFICIAL STONE SIDEWALKS.

**Sewer Pipes, Best English Cements. Best Belgian Cements. Culvert Pipes, &c. W. McNALLY & CO., Montreal**

## JOSSON CEMENT ..Manufactured at NIEL ON RUPELL

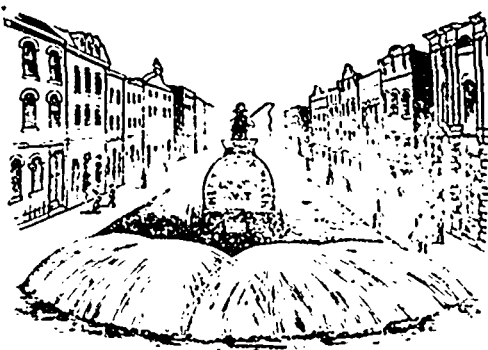
Is the Highest Grade Artificial Portland Cement and the Best for High Class Work. Has been used largely for Government and Municipal Works.

TO BE HAD FROM ALL CANADIAN DEALERS

**C. I. de Sola, Manager in Canada :: 180 St. James Street, MONTREAL**

Try an advertisement in THE CONTRACT RECORD.

# STUDEBAKER SPRINKLER (PATENT IMPROVED)



Does not Clog or get out of Order.

Greatest Width of Spray.

Can be Graded from Driver's Seat to any Volume.

We also make an. . . .

**Improved Vertical Spray**

. . . . for Pavements.

Write for Prices and Catalogue to

**Geo. Heaman, Mfr.**  
LONDON, ONT.

## Prices of Building Materials.

**PRESSED BRICK, Per M.**

TORONTO PRESSED BRICK AND TERRA COTTA WORKS.  
F.O.B. P.O.B.  
Milton, Ont. Montreal.

|                                                     |         |         |
|-----------------------------------------------------|---------|---------|
| Red No. 1.....                                      | \$12 50 | \$18 00 |
| " 2 .....                                           | 11 00   | 16 10   |
| " 3.....                                            | 8 00    | 3 70    |
| Buff No. 1.....                                     | 14 57   | 20 00   |
| " 2.....                                            | 13 00   | 18 50   |
| Brown.....                                          | 20 00   | 25 50   |
| Roman Red.....                                      | 22 00   | 30 50   |
| " Buff.....                                         | 28 00   | 33 57   |
| " Brown.....                                        | 35 00   | 40 50   |
| Hard Building.....                                  | 6 00    | 11 50   |
| " Sewers.....                                       | 6 00    | 11 50   |
| Roofing Tiles, \$20 00 per 1,000, \$23.00 Montreal. |         |         |

**DON VALLEY PRESSED BRICK WORKS.**

F.O.B. P.O.B.  
Don Valley. Montreal.

|                              |              |              |
|------------------------------|--------------|--------------|
| Red A.....                   | 18 00        | 24 00        |
| Red B.....                   | 16 00        | 20 00        |
| Red C.....                   | 13 70        | 17 00        |
| Troyan and Co Italian.....   | 21 00        | 28 00        |
| Pompeian.....                | 22 00        | 29 00        |
| Athenian and Egyptian.....   | 25 00        | 31 00        |
| Tyrian.....                  | 35 00        | 41 00        |
| Sicilian.....                | 40 00        | 45 00        |
| Roman.....                   | 35 00        | 40 00        |
| Carthaginian.....            | 40 45        | 45 00        |
| Ornamental.....              | 30 00 100 00 | 30 00 100 00 |
| Common insides.....          | 6 50         |              |
| Hard sewers.....             | 7 50         |              |
| Vitrified pavers, 18x18..... | 16 00        | 22 00        |
| " 12x12.....                 | 1 00         | 15 00        |

**COMMON BRICK, Per M.**

F.O.B. P.O.B.  
Toronto. Montreal.

|                     |           |           |
|---------------------|-----------|-----------|
| Common Walling..... | 7 00 8 00 | 7 50 8 00 |
| Good Facing.....    | 8 00 9 00 | 8 50      |
| Sewer.....          | 8 00 9 00 | 8 50 9 00 |

**STONE.**

|                                                                                                                                                                                                                                                                                                   |                          |                |
|---------------------------------------------------------------------------------------------------------------------------------------------------------------------------------------------------------------------------------------------------------------------------------------------------|--------------------------|----------------|
| Common Rubble, per ton, delivered.....                                                                                                                                                                                                                                                            | 10 0                     | 11 00          |
| Large flat Rubble, per ton, delivered.....                                                                                                                                                                                                                                                        | 14 00                    | 18 00          |
| Foundation Blocks, per cu. ft.....                                                                                                                                                                                                                                                                | 8 00                     | 30             |
| Granite (Stanstead) Ashlar, 6 in. to 12 in., rise 0 in., per ft. in. to 12 in., rise 0 in., per ft. Amherst Red Sandstone, Amherst, N.S., per cu. ft. Kent Free stone Quarries, Moncton, N.B., per cu. ft. River John, N.B., brown Freestone, per cu. ft. Port Phillip, N.S. Brown Sandstone..... | 25<br>1 00<br>1 00<br>95 | 25<br>75<br>95 |

|                                                                                  |       |       |
|----------------------------------------------------------------------------------|-------|-------|
| " Scoriot " Paving Blocks, 8" x 3 1/2" x 5".....                                 | 55    |       |
| " Scoriot " Paving Blocks, 8" x 3 1/2" x 4".....                                 | 45 00 |       |
| Mastillon.....                                                                   | 30 00 |       |
| Quebec and Vermont rough granite for building purposes, per c. ft. f.o.b. quarry | 40    | 1 00  |
| For ornamental work, cu. ft.                                                     | 40    |       |
| Granite paving blocks, 8 in. x 12 in. x 6 in. x 4 1/2 in. per M.                 |       | 50 00 |
| Granite curbing stone, 6 in. x 20 in. per lineal foot.....                       |       | 70    |

**CREDIT VALLEY STONE.**

|                                                  |              |      |
|--------------------------------------------------|--------------|------|
| Rubble, per car of 15 tons, ..                   |              | 7 00 |
| Brown Coursing, up to 10 in., per sup. yard..... | 1 50 to 1 75 |      |
| Brown Dimension, per cub. ft.                    |              | 1 00 |
| Grey Coursing, per sup. yard                     |              | 45   |
| Grey Dimension, per cub. ft.                     |              |      |

**LONGFORD STONE.**

|                             |      |  |
|-----------------------------|------|--|
| Rubble, per 30 M. car.....  | 5 00 |  |
| Ashlar, per cub. vd.....    | 2 00 |  |
| Dimension, per cub. ft..... | 18   |  |

**SLATE.**

|                                     |       |           |
|-------------------------------------|-------|-----------|
| Roofing (per square).               |       |           |
| " red.....                          | 17 50 | 20 00     |
| " purple.....                       | 8 50  | 10 00     |
| "ading green.....                   | 8 50  | 7 00 8 00 |
| " olack.....                        | 7 50  | 6 50      |
| Terra Cotta Tile per sq.....        | 20 00 | 25 00     |
| Ornamental Black Slate Roofing..... | 8 80  | 6 80      |

**CEMENT, LIME, etc.**

|                                      |           |            |
|--------------------------------------|-----------|------------|
| Portland Cements.....                |           |            |
| German per bbl.....                  | 2 90 3 10 | 2 55 2 65  |
| London.....                          | 2 95 3 00 | 2 25 2 45  |
| Newcas l.....                        | 3 00 3 00 | 1 95 2 10  |
| " Jossion " Brand Portland.....      | 3 05 3 25 | 2 70 2 80  |
| " Dyckerhoff.....                    | 3 05 3 25 | 2 75 2 90  |
| North's "Condor.....                 | 2 95 3 10 | 2 65 2 80  |
| English, artificial, per bbl.....    | 2 85 3 00 | 2 35 2 45  |
| Belgian, natural, per bbl.....       | 2 50 2 75 | 2 00 2 20  |
| Canadian, artificial, ".....         | 2 85 3 00 | 2 60 2 70  |
| Roman.....                           | 2 70 2 75 | 2 20 2 25  |
| Parian.....                          | 5 25 5 25 | 5 75 5 75  |
| Keene Superfine "Whites", 11 c0..... | 12 00     | 0 10 10 00 |
| Keene's Coarse "Whites", 8 c0.....   | 8 50      | 8 10 9 00  |
| "Karlstadt" (German).....            | 3 05 3 25 | 2 75 2 90  |
| "Germania" (German).....             | 3 05 3 25 | 2 75 2 90  |
| "Rooster" (Belgian).....             | 2 15 2 20 | 2 15 2 20  |
| "Keystone" (Belgian).....            | 1 95 2 05 | 1 95 2 05  |
| "Anvil" (Belgian).....               | 1 95 2 05 | 1 95 2 05  |
| "Burham" (English).....              | 2 95 3 00 | 2 25 2 45  |
| Hydraulic Cements.....               |           |            |
| Thorold, per bbl.....                | 1 50      | 1 65       |
| Queenston, ".....                    | 1 50      | 1 50 1 60  |
| Napanee, ".....                      | 1 50      | 1 50       |
| Hull, ".....                         | 1 50      | 1 50       |
| Ontario, ".....                      | 1 25      |            |

|                                    |                         |                    |
|------------------------------------|-------------------------|--------------------|
| Fire Bricks, Newcastle, per M..... | 30 00 35 00 16 00 21 00 | Toronto. Montreal. |
| Scotch.....                        | 30 00 35 00 19 00 21 00 |                    |
| Lime, 100 lbs., Grey.....          | 30                      |                    |
| " " White.....                     | 35                      | 30                 |
| Plaster, Calcined, N. B.....       | 2 00                    | 1 50               |
| " " N. S.....                      | 2 00                    | 1 50               |
| Hair, Plasterers', per bag.....    | 80 1 00                 | 0 60               |

**HARDWARE.**

The following are the quotations to builders for nails at Toronto and Montreal:

|                                  |      |      |
|----------------------------------|------|------|
| Cut nails, 5d & 6d, per keg..... | 2 85 | 2 85 |
| Steel " " ".....                 | 2 90 | 2 90 |

**CUT NAILS, FENCE AND CUT SPIKES.**

|                                |      |      |
|--------------------------------|------|------|
| 40d, hot cut, per 100 lbs..... | 2 35 | 2 85 |
| 10 to 12d, hot cut.....        | 2 95 | 2 95 |
| 8d, 6d, " ".....               | 3 00 | 3 00 |
| 6d, 7d, " ".....               | 3 15 | 3 15 |
| 4d to 5d, " ".....             | 3 25 | 3 25 |
| 3d, " ".....                   | 3 50 | 3 50 |
| 2d, " ".....                   | 3 85 | 3 85 |

Cut spikes, 10 cents per keg advance.

Steel Nails, 1cc. per keg extra.

Wire nails, 3-50 base price.

**Iron Pipe:**

|                                    |       |       |
|------------------------------------|-------|-------|
| Iron pipe, 1/2 inch, per foot..... | 6c.   | 6c    |
| " " 3/4 " ".....                   | 7     | 7     |
| " " 1 " ".....                     | 8 1/2 | 8 1/2 |
| " " 1 1/4 " ".....                 | 12    | 12    |
| " " 1 1/2 " ".....                 | 17    | 17    |
| " " 1 3/4 " ".....                 | 24    | 24    |
| " " 2 " ".....                     | 30    | 30    |
| " " 2 1/2 " ".....                 | 43    | 43    |

**Lead Pipe:**

|                         |       |                   |
|-------------------------|-------|-------------------|
| Lead pipe, per lb.....  | 7c.   | 25 per cent. dis. |
| Waste pipe, per lb..... | 7 1/2 |                   |

**Galvanized Iron:**

|                                                |         |         |
|------------------------------------------------|---------|---------|
| Adam's—Mar's Best and Queen's Head and Opolot: |         |         |
| 16 to 24 gauge, per lb.....                    | 4 1/2c. | 4 1/2c. |
| 26 gauge, ".....                               | 4 1/2   | 4 1/2   |
| 28 ".....                                      | 5       | 5 1/2   |
| Gordon Crown—                                  |         |         |
| 16 to 24 gauge, per lb.....                    | 4 1/2   | 4 1/2   |
| 26 gauge, ".....                               | 4 1/2   | 4 1/2   |
| 28 ".....                                      | 5       | 5 1/2   |

Note.—Cheaper grades about 1/2c. per lb. less.

**Structural Iron:**

|                                 |      |      |
|---------------------------------|------|------|
| Steel Beams, per 100 lbs.....   | 2 75 | 2 75 |
| " channels, ".....              | 2 85 | 2 85 |
| " angles, ".....                | 2 50 | 2 50 |
| " tees, ".....                  | 2 80 | 2 80 |
| " plates, ".....                | 2 55 | 2 55 |
| Sheared steel bridge plate..... |      | 2 75 |