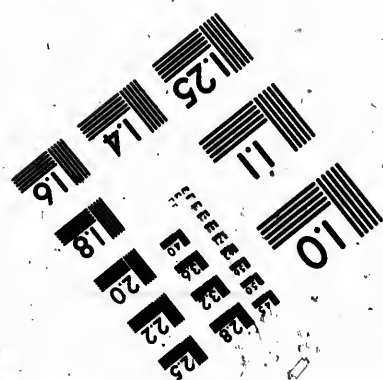
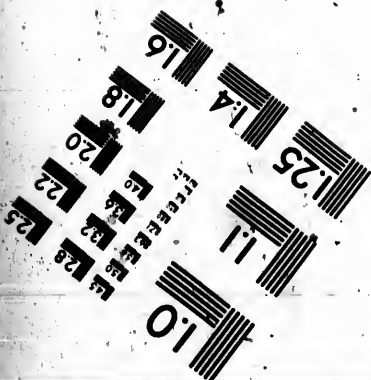
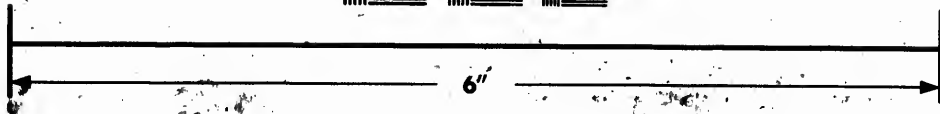
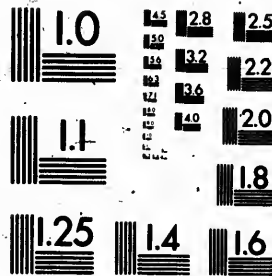


**IMAGE EVALUATION
TEST TARGET (MT-3)**



**Photographic
Sciences
Corporation**

23 WEST MAIN STREET
WEBSTER, N.Y. 14580
(716) 872-4503

1.8
2.0
2.2
2.5
2.8
3.2
3.6
4.0

**CIHM
Microfiche
Series
(Monographs)**

**ICMH
Collection de
microfiches
(monographies)**



Canadian Institute for Historical Microreproductions / Institut canadien de microreproductions historiques

10

© 1991

Technical and Bibliographic Notes / Notes techniques et bibliographiques

The Institute has attempted to obtain the best original copy available for filming. Features of this copy which may be bibliographically unique, which may alter any of the images in the reproduction, or which may significantly change the usual method of filming, are checked below.

L'Institut a microfilmé le meilleur exemplaire qu'il lui a été possible de se procurer. Les détails de cet exemplaire qui sont peut-être uniques du point de vue bibliographique, qui peuvent modifier une image reproduite, ou qui peuvent exiger une modification dans la méthode normale de filmage sont indiqués ci-dessous.

- Coloured covers/
Couverture de couleur
- Covers damaged/
Couverture endommagée
- Covers restored and/or laminated/
Couverture restaurée et/ou pelliculée
- Cover title missing/
Le titre de couverture manque
- Coloured maps/
Cartes géographiques en couleur
- Coloured ink (i.e. other than blue or black)/
Encre de couleur (i.e. autre que bleue ou noire)
- Coloured plates and/or illustrations/
Planches et/ou illustrations en couleur
- Bound with other material/
Relié avec d'autres documents
- Tight binding may cause shadows or distortion along interior margin/
La reliure serrée peut causer de l'ombre ou de la distorsion le long de la marge intérieure
- Blank leaves added during restoration may appear within the text. Whenever possible, these have been omitted from filming/
Il se peut que certaines pages blanches ajoutées lors d'une restauration apparaissent dans le texte, mais, lorsque cela était possible, ces pages n'ont pas été filmées.

- Coloured pages/
Pages de couleur
- Pages damaged/
Pages endommagées
- Pages restored and/or laminated/
Pages restaurées et/ou pelliculées
- Pages discoloured, stained or foxed/
Pages décolorées, tachetées ou piquées
- Pages detached/
Pages détachées
- Showthrough/
Transparence
- Quality of print varies/
Qualité inégale de l'impression
- Continuous pagination/
Pagination continue
- Includes index(es)/
Comprend un (des) index

Title on header taken from:
Le titre de l'en-tête provient:

- Title page of issue/
Page de titre de la livraison
- Caption of issue/
Titre de départ de la livraison
- Masthead/
Générique (périodiques) de la livraison

Additional comments:
Commentaires supplémentaires:

There are some creases in the middle of pages.

This item is filmed at the reduction ratio checked below/
Ce document est filmé au taux de réduction indiqué ci-dessous.

10X	12X	14X	16X	18X	20X	22X	24X	26X	28X	30X	32X
										✓	

The copy filmed here has been reproduced thanks to the generosity of:

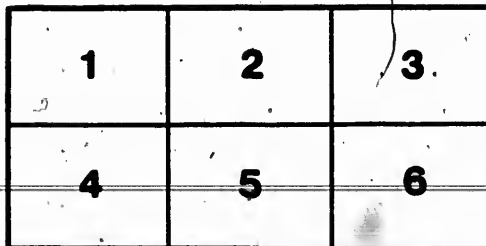
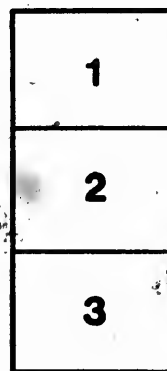
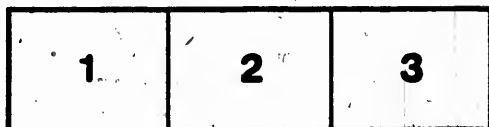
Manuscript Division,
National Archives of Canada

The images appearing here are the best quality possible considering the condition and legibility of the original copy and in keeping with the filming contract specifications.

Original copies in printed paper covers are filmed beginning with the front cover and ending on the last page with a printed or illustrated impression, or the back cover when appropriate. All other original copies are filmed beginning on the first page with a printed or illustrated impression, and ending on the last page with a printed or illustrated impression.

The last recorded frame on each microfiche shall contain the symbol \rightarrow (meaning "CONTINUED"), or the symbol ∇ (meaning "END"), whichever applies.

Maps, plates, charts, etc., may be filmed at different reduction ratios. Those too large to be entirely included in one exposure are filmed beginning in the upper left hand corner, left to right and top to bottom, as many frames as required. The following diagrams illustrate the method:



L'exemplaire filmé fut reproduit grâce à la générosité de:

Division des manuscrits,
Archives nationales du Canada

Les images suivantes ont été reproduites avec le plus grand soin, compte tenu de la condition et de la netteté de l'exemplaire filmé, et en conformité avec les conditions du contrat de filmage.

Les exemplaires originaux dont la couverture en papier est imprimée sont filmés en commençant par le premier plat et en terminant soit par la dernière page qui comporte une empreinte d'impression ou d'illustration, soit par le second plat, selon le cas. Tous les autres exemplaires originaux sont filmés en commençant par la première page qui comporte une empreinte d'impression ou d'illustration et en terminant par la dernière page qui comporte une telle empreinte.

Un des symboles suivants apparaîtra sur la dernière image de chaque microfiche, selon le cas: le symbole \rightarrow signifie "A SUIVRE", le symbole ∇ signifie "FIN".

Les cartes, planches, tableaux, etc., peuvent être filmés à des taux de réduction différents. Lorsque le document est trop grand pour être reproduit en un seul cliché, il est filmé à partir de l'angle supérieur gauche, de gauche à droite, et de haut en bas, en prenant le nombre d'images nécessaire. Les diagrammes suivants illustrent la méthode.

BRITISH PROVINCES IN NORTH AMERICA.

Liberal Encouragement by his Majesty's Government to Settlers inclined to proceed from Great Britain and Ireland, and Provision by Vessels, &c. for their Passage to Quebec with their Families.

IT is the intention of His Majesty's Government to encourage SETTLERS, to proceed from Great Britain and Ireland to the BRITISH PROVINCES in NORTH AMERICA, and for this purpose a certain number of Vessels will be appropriated for the Conveyance of such Persons as may be properly recommended, together with their Wives and Children, to Quebec, to which port only the Conveyance of Settlers free of expense, with other advantages, will be limited during the year. Lands will be Granted to them either in Upper or in Lower Canada, in which Extent is comprehended a choice of Climate and of Soil adapted for every Branch of Cultivation.

The encouragement and advantages intended to be afforded to Settlers will be, as follows:

A passage and provisions during the voyage will be furnished by Government, and on their arrival in the Colony, a grant of one hundred acres of Land will be secured to each family, of which they will be put immediately in possession, and all their male children actually residing in the Province will be entitled, on attaining the age of 21 years, to a similar grant of one hundred acres each.

For the first six or eight months, as it may be found necessary after their arrival, (in order to enable the settlers to establish themselves upon their respective grants, and to clear and to cultivate a portion of the land) they will be allowed rations from the public stores, and in case from unforeseen events it should be found requisite, further aid in this respect may be afforded according to the circumstances of the case, by issuing rations for a limited period, at a price under prime cost.

Axes and other necessary implements will also be furnished to them, under certain regulations, at a fixed price, not exceeding half the prime cost.

Should any number of families proceeding from the same part of the United Kingdom, or possessing any joint stock or funds, be desirous of settling in the same neighbourhood in Canada, care will be taken to allot them Lands as nearly as possible contiguous to each other; and a sufficient portion of Land will be appropriated in the midst of such settlers for a Church, and for the maintenance of a Clergyman and a Schoolmaster; and in case a sufficient number of settlers so united should be accompanied from the United Kingdom by a person of either of the above functions, who possesses their confidence, and can be well recommended; and who shall be approved of by Government, a salary will be provided of one hundred pounds per annum to such Minister, and fifty pounds per annum to the Schoolmaster, for such period as shall afterwards be specified.

Persons who may be allowed to proceed to Canada as SETTLERS FROM SCOTLAND, must embark in the month of April, from such Port or Ports in the Clyde as shall be noticed in a future Advertisement, where vessels will be ready to receive those for whom the necessary accommodation will be provided.

In order to prevent persons from making an unwarranted and improper use of the liberality of Government, it will be required that every person embarking for Quebec, should at the time of embarkation deposit in the hands of the Government Agent the following sum:—

Every male person above sixteen years of age, sixteen pounds sterling;—every woman, being the wife of any person so embarking, two guineas;—children under sixteen years of age will be conveyed free of expense;—and whatever sums may be so paid by them will be repaid to them or their representatives in Canada at the end of two years from the date of their embarkation, upon its being ascertained that they are settled on the grant of Land allotted to them.

John Campbell, Esq. Writer to his Majesty's Signet, Abercromby Place, Edinburgh, is appointed by Government, Commissioner and General Agent in Scotland for this Business, to whom communications may be made.

As the time for embarkation of Settlers is limited, such as are at a distance, and who wish to embrace the present opportunity of settling in British America, will do well to send by post their Proposals and Certificates without any delay. Those testimonials must certify the general good character of Applicants—their professions—former pursuits—whether married or widowers—the number of their children, distinguishing male and female—and the ages of all. These must be obtained either from Justices of the Peace, Clergymen, or Elders of the Parish, or other respectable persons.

It is recommended that the utmost care be taken by those who grant certificates that they are satisfied from personal knowledge of the facts contained in the representation of the circumstances.

Edinburgh, 22d Feb. 1815. }
ABERCROMBY PLACE. }

Printed by Andrew Duncan, Argyle Street, Glasgow.

