

**CIHM
Microfiche
Series
(Monographs)**

**ICMH
Collection de
microfiches
(monographies)**



Canadian Institute for Historical Microreproductions / Institut canadien de microreproductions historiques

© 1997

Technical end Bibliographic Notes / Notes techniques et bibliographiques

The Institute has attempted to obtain the best original copy available for filming. Features of this copy which may be bibliographically unique, which may alter any of the images in the reproduction, or which may significantly change the usual method of filming, are checked below.

L'Institut a microfilmé le meilleur exemplaire qu'il lui a été possible de se procurer. Les détails de cet exemplaire qui sont peut-être uniques du point de vue bibliographique, qui peuvent modifier une image reproduite, ou qui peuvent exiger une modification dans la méthode normale de filmage sont indiqués ci-dessous.

Coloured covers/
Couverture de couleur

Covers damaged/
Couverture endommagée

Covers restored and/or laminated/
Couverture restaurée et/ou pelliculée

Cover title missing/
Le titre de couverture manque

Coloured maps/
Cartes géographiques en couleur

Coloured ink (i.e. other than blue or black)/
Encre de couleur (i.e. autre que bleue ou noire)

Coloured plates and/or illustrations/
Planches et/ou illustrations en couleur

Bound with other material/
Relié avec d'autres documents

Tight binding may cause shadows or distortion along interior margin/
Le reliure serrée peut causer de l'ombre ou de la distorsion le long de la marge intérieure

Blank leaves added during restoration may appear within the text. Whenever possible, these have been omitted from filming/
Il se peut que certaines pages blanches ajoutées lors d'une restauration apparaissent dans le texte, mais, lorsque cela était possible, ces pages n'ont pas été filmées.

Additional comments:
Commentaires supplémentaires:

Coloured pages/
Pages de couleur

Pages damaged/
Pages endommagées

Pages restored and/or laminated/
Pages restaurées et/ou pelliculées

Pages discoloured, stained or foxed/
Pages décolorées, tachetées ou piquées

Pages detached/
Pages détachées

Showthrough/
Transparence

Quality of print varies/
Qualité inégale de l'impression

Continuous pagination/
Pagination continue

Includes index(es)/
Comprend un (des) index

Title on header taken from:
Le titre de l'en-tête provient:

Title page of issue/
Page de titre de la livraison

Caption of issue/
Titre de départ de la livraison

Masthead/
Générique (périodiques) de la livraison

This item is filmed at the reduction ratio checked below/
Ce document est filmé au taux de réduction indiqué ci-dessous.

10X	14X	18X	22X	26X	30X
<input type="checkbox"/>	<input type="checkbox"/>	<input type="checkbox"/>	<input type="checkbox"/>	<input checked="" type="checkbox"/>	<input type="checkbox"/>
12X	16X	20X	24X	28X	32X

The copy filmed here has been reproduced thanks to the generosity of:

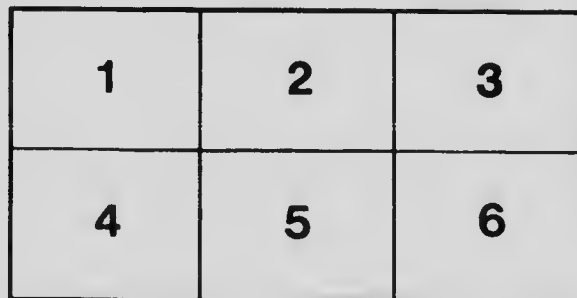
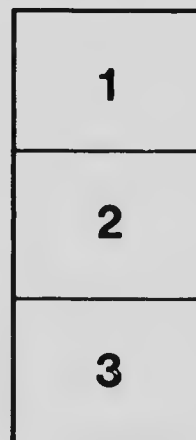
Thomas Fisher Rare Book Library,
University of Toronto Library

The images appearing here are the best quality possible considering the condition and legibility of the original copy and in keeping with the filming contract specifications.

Original copies in printed paper covers are filmed beginning with the front cover and ending on the last page with a printed or illustrated impression, or the back cover when appropriate. All other original copies are filmed beginning on the first page with a printed or illustrated impression, and ending on the last page with a printed or illustrated impression.

The last recorded frame on each microfiche shall contain the symbol \rightarrow (meaning "CONTINUED"), or the symbol ∇ (meaning "END"), whichever applies.

Maps, plates, charts, etc., may be filmed at different reduction ratios. Those too large to be entirely included in one exposure are filmed beginning in the upper left hand corner, left to right and top to bottom, as many frames as required. The following diagrams illustrate the method:



L'exemplaire filmé fut reproduit grâce à la générosité de:

Thomas Fisher Rare Book Library,
University of Toronto Library

Les images suivantes ont été reproduites avec le plus grand soin, compte tenu de la condition et de la netteté de l'exemplaire filmé, et en conformité avec les conditions du contrat de filmage.

Les exemplaires originaux dont la couverture en papier est imprimée sont filmés en commençant par le premier plat et en terminant soit par la dernière page qui comporte une empreinte d'impression ou d'illustration, soit par le second plat, selon le cas. Tous les autres exemplaires originaux sont filmés en commençant par la première page qui comporte une empreinte d'impression ou d'illustration et en terminant par la dernière page qui comporte une telle empreinte.

Un des symboles suivants apparaîtra sur la dernière image de chaque microfiche, selon le cas: le symbole \rightarrow signifie "A SUIVRE", le symbole ∇ signifie "FIN".

Les cartes, planches, tableaux, etc., peuvent être filmés à des taux de réduction différents. Lorsque le document est trop grand pour être reproduit en un seul cliché, il est filmé à partir de l'angle supérieur gauche, de gauche à droite, et de haut en bas, en prenant le nombre d'images nécessaire. Les diagrammes suivants illustrent la méthode.

J1-2

CHECK LIST

OF THE

Vertebrates of Ontario and Catalogue of
Specimens in the Biological Section
of the Provincial Museum

BIRDS



DEPARTMENT OF EDUCATION
TORONTO

RB97447

CHECK LIST

OF THE

Vertebrates of Ontario and Catalogue of Specimens in the Biological Section of the Provincial Museum

BIRDS

DEPARTMENT OF EDUCATION
TORONTO



TORONTO

Printed and Published by L. K. CAMERON, Printer to the King's Most Excellent Majesty

1905



WARWICK BROS & RUTTER, Limited, Printers
TORONTO

1a B

HONORABLE R. A. PYNE, M.D.,
Minister of Education :

SIR,—The following check list and catalogue of biological specimens now in the Provincial Museum has been prepared under your authority and direction by Mr C. W. Nash, Lecturer on Biology for the Ontario Department of Agriculture.

There is reason to believe that the presentation of these lists will greatly facilitate the study of animal life on the part of our people, and especially of the young, whether they are pursuing systematic studies in natural history, or merely from a desire to acquire casual information relating to the subject.

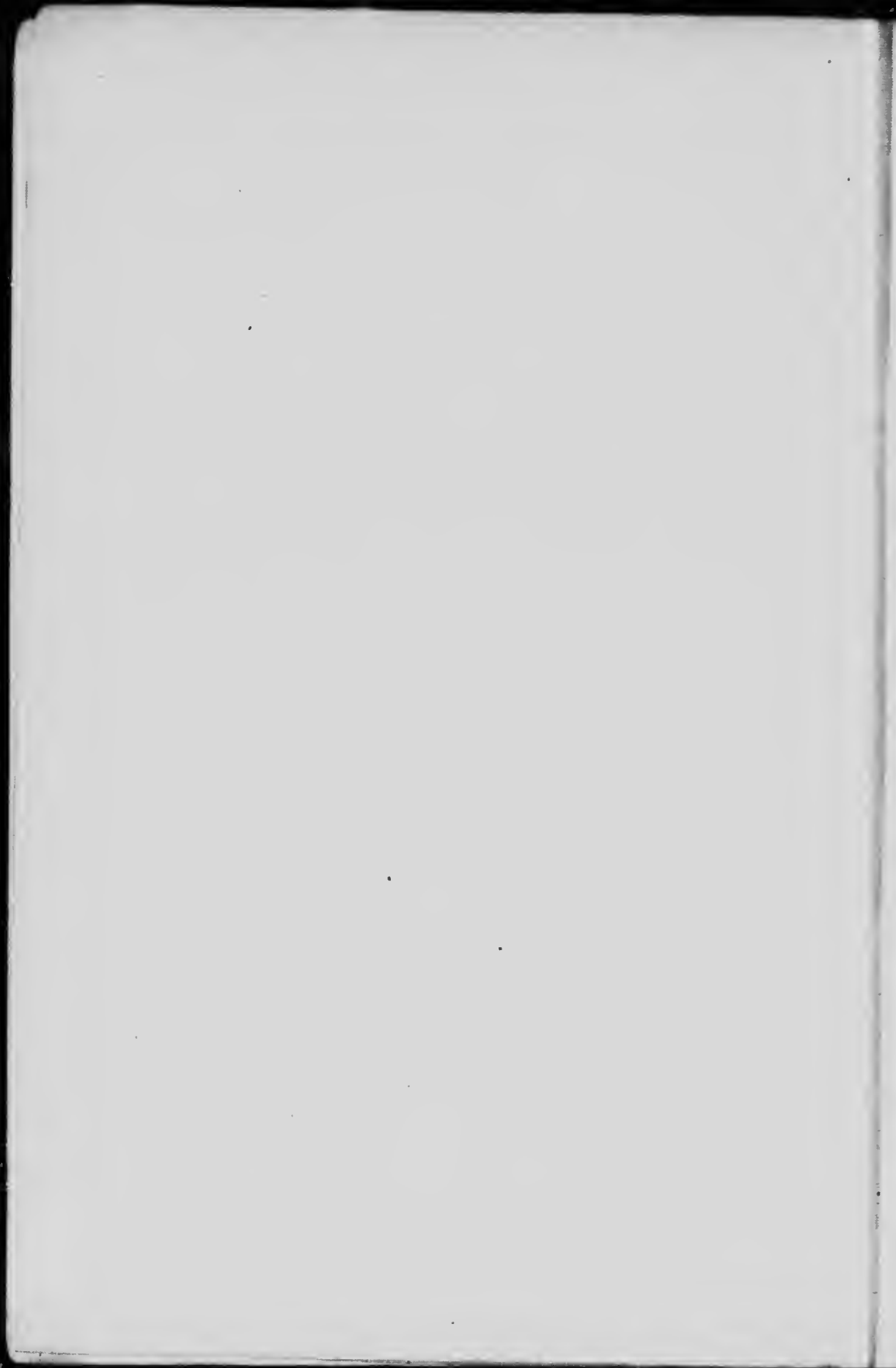
The economic importance of knowledge concerning all forms of life is especially valuable in this Province, where so much depends on the science of agriculture.

I have the honor to be, Sir,

Yours respectfully,

DAVID BOYLE.

Superintendent.



PREFACE.

In the following Check List I have endeavoured to include all the birds which have been positively known to occur in the Province of Ontario.

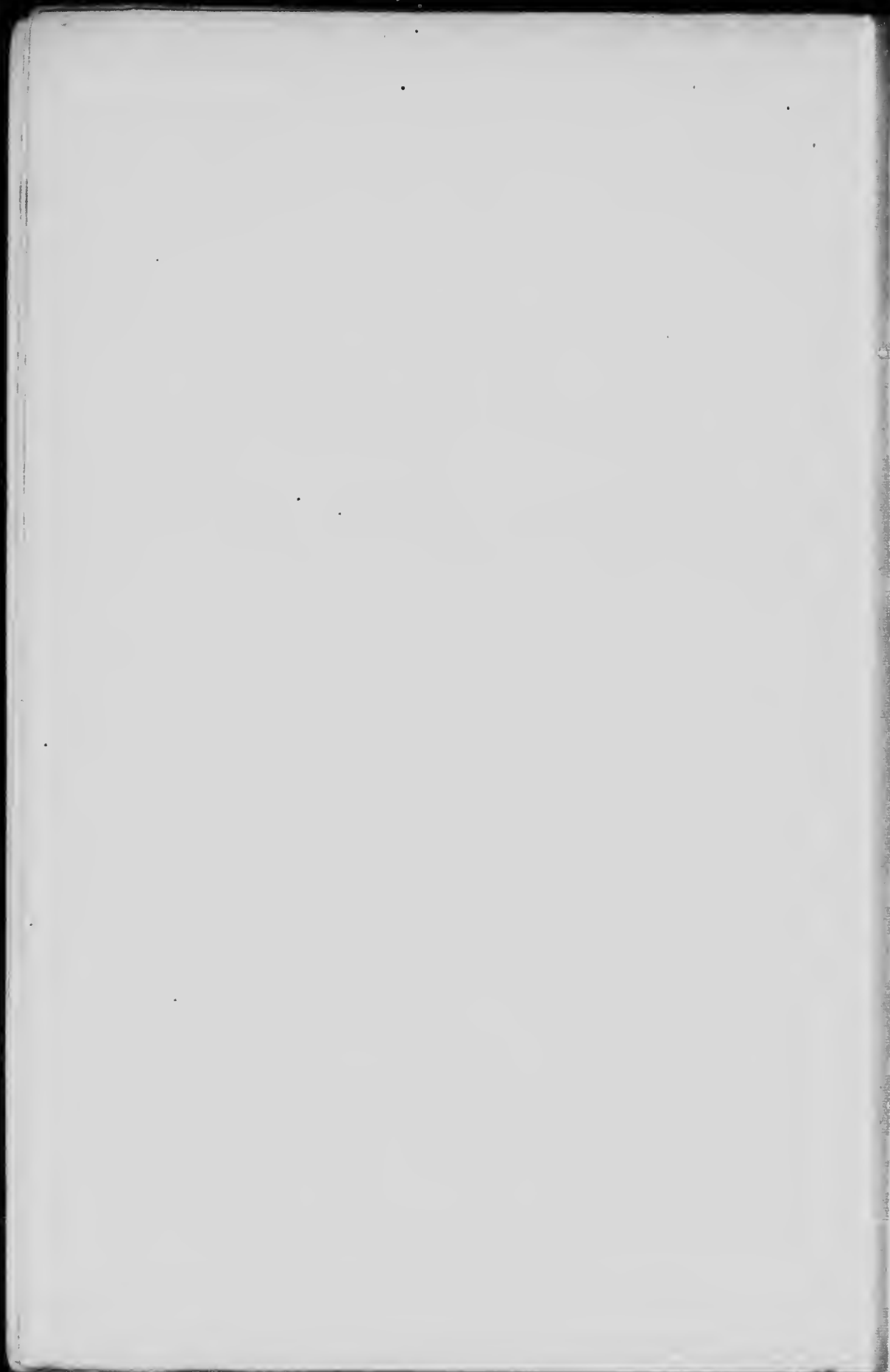
In cases where I have no personal knowledge of the record I have given the authority for it.

The nomenclature adopted is that of the Check List of the American Ornithologists' Union, and the number in the margin opposite the specific name corresponds with the number on the label of each specimen of that species, in the Biological Section of the Provincial Museum.

Species marked (*) are wanting to complete the collection.

C. W. NASH.

TORONTO, Ontario, November 15th, 1905.



CHECK LIST
OF THE
BIRDS OF ONTARIO.

AVES (The Birds).

A bird may be defined as an air-breathing vertebrate with a covering of feathers; warm blood; a complete double circulation; the two anterior limbs (wings) adapted for flying or swimming, the two posterior limbs (legs) adapted for walking or swimming; respiration never effected by gills or branchiæ, but after leaving the egg by lungs, which are connected with air cavities in various parts of the body. Reproduction by eggs which are hatched externally, either by incubation, or exposure to the heat of the sun; the shell calcareous, hard and brittle.

Order PYGOPODES. (Diving Birds.)

Feet palmate or lobate; tibia feathered, included in the skin nearly to the heel joint, hence the legs set far back so that the birds are scarcely able to walk at all on land; hind toe small and elevated or wanting; bill horny, not lamellate or serrate; no gular pouch; wings very short; tail very short or rudimentary. All are water birds, expert divers, feeding chiefly on fishes.

FAMILY PODICIPIDÆ (GREBES).

Head with crests or ruffs in the breeding season except in *Podilymbus*. Under plumage dense, lustrous, mostly white. Wings very short; tail rudimentary, without distinct quills. Feet lobate, toes flattened, provided with flat claws resembling human nails, tarsus scutellate, compressed. All are aquatic.

GENUS COLYMBUS.

(2) Holbæll's Grebe.
(*Colymbus holbælli*.)

A regular, but never a common, spring and autumn visitor to the waters of southern Ontario. Probably breeds in the northern part of the Province.

(3) Horned Grebe.*(Colymbus auritus.)*

Abundant on the great lakes and all large bodies of water throughout the Province in spring and autumn; breeding in the large marshes. A few remain on Lake Ontario through the winter.

GENUS *PODILYMBUS*.**(6) Pied-billed Grebe. (Hell Diver.)***(Podilymbus podiceps.)*

A common summer resident in marshes all over the Province, breeding throughout its range. Arrives early in April, departs about the middle of October.

FAMILY *GAVIIDÆ*. (THE LOONS.)

Bill long, strong, tapering, acute, wholly hard; nostrils linear. Head densely and evenly feathered, without ruffs or naked spaces; eye large. Feet palmate; tarsus reticulate, strongly compressed; wings strong. Tail short but well developed. Birds of large size, with strong powers of flight and pre-eminent in swimming and diving, but scarcely able to walk. Their notes are curiously loud and wild, according well with their usual surroundings. They feed on fishes.

GENUS *GAVIA*.**(7) Loon.***(Gavia imber.)*

Common on all large bodies of water in spring and autumn, breeding about the lakes and marshes of the interior. Some few remain on the great lakes all through the winter, but the bulk go south during the coldest part of the season.

(*) (9) Black-throated Loon.*(Gavia arctica.)*

A very rare winter visitor.

(11) Red-throated Loon.*(Gavia lumme.)*

A common spring and autumn visitor to our waters, breeding in the far north and retiring southward as its haunts freeze up.

FAMILY *ALCIDÆ*. (THE AUKS, MURRES, ETC.)

Feet palmate, three-toed; tarsus reticulate or partly scutellate; claws ordinary; tail perfect of few feathers; legs set far back. All our species fly well and swim on, or under water with equal ease. They feed on fishes.

GENUS FRATERCULA.

- (13) **Puffin.**
(*Fratercula arctica.*)

Common in the Arctic regions and the islands of the North Atlantic. A bird of the ocean. One specimen has been recorded, taken on the Ottawa River.

GENUS CEPPHUS.

- (27) **Black Guillemot.**
(*Cepphus grylle.*)

Like the last, a bird of the ocean, which occasionally has wandered up to Lake Ontario. Mr. John Maughan, jr., has a specimen taken near Toronto, and Mr. McIlwraith mentions one taken on Burlington Bay many years ago.

GENUS URIA.

- (31) **Brunnich's Murre.**
(*Uria lomvia.*)

Common on the Atlantic coast and an occasional winter visitor to Lake Ontario.

During the winter of 1893 a large number of these birds appeared on Lake Ontario, and each season since that time, a few have been seen there.

GENUS ALCA.

- (32) **Razor-billed Auk.**
(*Alca torda.*)

Another ocean bird which has found its way up Lake Ontario occasionally in late autumn or early winter.

GENUS ALLE.

- (34) **Dovekie.** (Little Auk.)
(*Alle alle.*)

Common on some parts of the North Atlantic coast. One specimen taken by Mr. John Maughan on Lake Ontario.

Order LONGIPENNES. (Long-winged Swimmers.)

Feet palmate; tibia feathered; legs inserted near the centre of equilibrium, so that the birds stand with the axis of the body nearly hori-

zontal; hind toe small and elevated (wanting in *Rissa*). Bill usually long, horny, not serrate, nor lamellate; no gular pouch. Wings very long and pointed; tail well developed. Water birds, of great powers of flight; feeding on fishes and floating garbage.

FAMILY STERCORARIIDÆ. (THE JÆGERS.)

Gull-like birds with the bill hooked and cere; tail square with the middle pair of feathers long-exserted; tibia naked below; tarsus scutellate in front, granular behind. Voracious birds, which frequently live by tormenting the Gulls and Terns and compelling them to disgorge their food. Plumage dark above.

GENUS STERCORARIUS.

(*) (36) **Pomarine Jaeger.**

(*Stercorarius pomarinus*.)

An occasional visitor to the great lakes.

(37) **Parasitic Jaeger.**

(*Stercorarius parasiticus*.)

An occasional spring and autumn visitor to the great lakes.

FAMILY LARIDÆ. (THE GULLS.)

Long-winged swimmers. Bill long, horny, not serrate nor lamellate; no gular pouch. Feet palmate; tibia feathered; legs near centre of equilibrium; hind toe elevated, small (wanting in *Rissa*). Wings very long and pointed. Tail well developed. General colour usually white, with a darker mantle of a slaty bluish tint and commonly some black markings. Sexes alike in colour, but the plumage varying very much with age and season. Possessed of wonderful power of flight. Food, fishes and floating garbage. The birds are the scavengers of the waters.

GENUS PAGOPHILA.

(*) (39) **Ivory Gull.**

(*Pagophila alba*.)

A regular but not a common winter visitor to Lake Ontario. It probably occurs on the northern lakes also, but as yet I have not heard of it.

GENUS RISSA.

(40) **Kittiwake Gull.**

(*Rissa tridactyla*.)

A regular, but not common, winter visitor to the great lakes.

GENUS LARUS.

(42) **Glaucous Gull.**

(Larus glaucus.)

A regular, but not common, visitor to the great lakes.

(43) **Iceland Gull.**

(Larus leucopterus.)

Mr. Kay reports having taken one at Port Sydney, Muskoka, April 6th, 1898, and Mr. J. H. Ames has one taken at Toronto.

(47) **Great Black-backed Gull.**

(Larus marinus.)

A regular, but not abundant, winter visitor to the great lakes, more frequently observed than either of the preceding species, perhaps because it is more readily distinguishable when flying.

(51) **American Herring Gull.**

(Larus argentatus.)

A very common resident, frequenting the great lakes at all seasons, but most abundant in winter. It breeds regularly on many of the lakes and marshes of the interior. It formerly bred on the islands and in the marshes of Lake Ontario and some may yet do so, in secluded places.

(54) **Ring-billed Gull.**

(Larus delawarensis.)

A very common resident; like the last, most abundant in winter. Breeds in the lakes and marshes of the interior.

(*) (58) **Laughing Gull.**

(Larus atricilla.)

An accidental visitor in summer

(59) **Franklin's Gull.**

(Larus franklinii.)

A rare summer visitor, occasionally straggling here from the prairie sloughs where they are abundant. Breeds in nearly all the large marshes of Manitoba.

(60) **Bonaparte's Gull.**

(Larus philadelphia.)

A common spring and autumn visitor to the great lakes, arriving in April and departing at the end of November. It is possible that some breed in the northern part of the Province, but its principal breeding grounds are north and west of Ontario.

SUBFAMILY STERNINÆ. (THE TERNS.)

GENUS STERNA.

- (64) **Caspian Tern.**
(*Sterna caspia.*)
A regular but not common spring and autumn visitor to the great lakes.
- (*) (67) **Cabot's Tern.**
(*Sterna sandvicensis acufluvida.*)
The capture of a specimen of this Tern in the spring of 1882, at Lucknow, is recorded by Mr. McIlwraith.
- (69) **Forster's Tern.**
(*Sterna fosteri.*)
A rather uncommon summer visitor, breeds in the larger marshes throughout its range.
- (70) **Common Tern.**
(*Sterna hirundo.*)
A regular summer visitor, breeding at several places near the lakes. Not uncommon in spring and autumn.
- (74) **Least Tern.**
(*Sterna antillarum.*)
An accidental visitor. Breeds on the Atlantic coast. Mr. John Maughan has a specimen, taken at Toronto in 1897.

GENUS HYDROCHELIDON.

- (77) **Black Tern.**
(*Hydrochelidon nigra surinamensis.*)
This Tern is common in some of the large marshes throughout the Province during the summer, but it is not generally distributed. Breeds where it occurs.

FAMILY PROCELLARIIDÆ. (THE PETRELS.)

GENUS ÆSTRELATA.

- (*) (98) **Black-capped Petrel.**
(*Æstrelata hastata.*)
One found dead on the shore of the Island at Toronto.

Order STEGANOPOLÆS. (The Totipalmate Swimmers.)

Swimming birds with all four toes fully webbed; hind toe lengthened, scarcely elevated; tibia feathered; bill horny, not lamellate; nostrils very small or abortive; a prominent gular pouch; tarsus reticulate. All our species are large aquatic birds, feeding on fish, of which they consume great quantities.

FAMILY SULIDÆ. (THE GANNETS.)

Bill long, cleft to beyond eyes, very stout at base, the tip not hooked; the edges irregularly serrate; a nasal groove but the nostril abortive; gular sac small, naked; wings long, pointed; tail long and stiff, with pointed feathers; feet stout. Body heavy, the tissues under the skin with air chambers.

GENUS SULA.**(117) Gannet.**
(*Sula bassana*.)

An accidental visitor from the Atlantic coast, which has been met with on Lake Ontario three or four times.

FAMILY PHALACROCORACIDÆ. (THE CORMORANTS.)

Bill slender, compressed, strongly hooked, the cutting edges uneven; gular pouch small; wings short; tail large, of very stiff feathers, often used to partially support the body; legs set far back; a nasal groove with abortive nostrils.

GENUS PHALACROCORAX.**(119) Cormorant.**
(*Phalacrocorax carbo*.)

An uncommon spring and autumn visitor to the larger bodies of water. Breeds along the North Atlantic coast.

(120) Double-crested Cormorant.
(*Phalacrocorax dilophus*.)

A regular but not a common spring and autumn visitor to our lakes; probably breeds about the waters of the northern part of the Province, as it does commonly in Manitoba and Assiniboia.

FAMILY PELECANIDÆ. (THE PELICANS.)

Bill very long, straight grooved throughout, with a claw-like hook at the end; the broad space between the branches of the lower mandible occupied by a large membraneous sac; nostrils abortive; wings very long; tail very short; feet short and stout.

GENUS PELECANUS.

*) (125) **American White Pelican.**
(*Pelecanus erythrorhynchos.*)

An accidental visitor to the great lakes. They breed commonly in Northern Manitoba and the Western Provinces.

Order ANSERES. (The Lamellirostral Swimmers.)

Swimming birds with feet four-toed, palmate, hind toe small, elevated. Bill lamellate; no gular pouch. Legs short.

This order contains nearly all the water-fowl which are valued in domestication, or as game birds.

FAMILY ANATIDÆ. (DUCKS, GEESE AND SWANS.)

Bill laminate, *i.e.* furnished along each cutting edge with a regular series of tooth-like processes, which correspond to certain lacinate processes of the fleshy tongue, which ends in a horny tip; bill large, thick, high at base, depressed towards the end, membraneous except at the obtuse tip, which is occupied by a horny nail. Body heavy, flattened beneath. Head high, compressed, with sloping forehead; eyes small. Tail short, except in the full plumaged males of *Dafila* and *Harelda*, both of which have the central tail feathers much prolonged. Legs and feet short, the anterior toes full webbed. Tibia feathered. All are good swimmers and, with us, more or less migratory.

SUBFAMILY MERGINÆ. (THE MERGANSERS.)

GENUS MERGANSER.

(129) **American Merganser.** (*Goosander.*)
(*Merganser americanus.*)

A common resident, breeding in the northern part of the Province and spending the winter on the open water of the lakes and rapid rivers near our southern boundary.

These birds are very destructive to our fisheries.

(130) Red-breasted Merganser.*(Merganser serrator.)*

A common resident, more abundant than the last and equally destructive to fish. Breeds in the interior of the Province and winters wherever there is open water.

GENUS LOPHODYTES.

(131) Hooded Merganser.*(Lophodytes cucullatus.)*

A tolerably common summer resident, breeding throughout the interior of the Province and retiring southward as ice forms.

SUBFAMILY ANATINÆ. (THE RIVER DUCKS.)



Mallard.

GENUS ANAS.

(132) Mallard.*(Anas boschas.)*

Common summer resident of the western part of the Province, less abundant in the east, retires southward as the shallow waters it frequents become frozen over. Breeds throughout its range.

(133) Black Duck.*(Anas obscura.)*

A very common summer resident, breeding in all suitable places throughout the Province. It is more abundant in the east than in the west, and is only a rare visitor in Manitoba.

(133a) **Red-legged Black Duck.**

(Anas obscura rubripes.)

Frequently met with in late autumn. Its breeding range is not positively known, but probably includes the Hudson Bay region.

GENUS CHAULELASMUS.

(135) **Gadwall.**

(Chaulelasmus streperus.)

A very rare summer resident. Breeds commonly in Manitoba and adjoining Provinces westward.

GENUS MARECA.

(137) **Baldpate.**

(Mareca americana.)

A fairly common migrant, probably breeds regularly in the interior. I have occasionally found it as a summer resident in the marshes of Lakes Erie and Ontario. It breeds commonly in the Western Provinces. Arrives in April and leaves with the first sharp frost.

GENUS NETTION.

(139) **Green-winged Teal.**

(Nettion carolinensis.)

Common in the spring and autumn migrations, breeding in the north from Labrador to the Pacific coast. Arrives as soon as the marshes are open and leaves about the end of October.

GENUS QUERQUEDULA.

(140) **Blue-winged Teal.**

(Querquedula discors.)

Common summer resident, breeding in all suitable places throughout the Province. Arrives in April and leaves about the end of September.

GENUS SPATULA.

(142) **Shoveller.**

(Spatula clypeata.)

A regular but uncommon summer resident, breeds throughout its range. Very abundant on the prairie sloughs of Manitoba.

GENUS DAFILA.

(143) **Pintail.**

(Dafila acuta.)

A common spring and autumn visitor to southern Ontario, occasionally breeding in the marshes about Lake Erie and probably regu-

larly breeding in the interior of the Province. It is a common summer resident of Manitoba.

Arrives as soon as the marshes open and leaves when they freeze up.

GENUS AIX.

(144) **Wood Duck.**

(*Aix sponsa.*)

Formerly an abundant summer resident, breeding everywhere throughout the Province; it is still common, but its numbers are fast decreasing.

Arrives as soon as the ice is out of the marshes, departs about the end of September.

SUBFAMILY FULIGULINÆ. (THE SEA DUCKS.)

GENUS AYTHYA.

(146) **Redhead.**

(*Aythya americana.*)

A common spring and autumn migrant. They breed from the great lakes northward and abundantly in Manitoba and the Prairie Provinces.

The bulk of them retire southward when their haunts are frozen over. In some seasons a considerable number spend the winter on Lake Ontario.

(147) **Canvas-back Duck.**

(*Aythya vallisneria.*)

A regular, but not generally a common spring and autumn migrant in Ontario. It breeds commonly in the marshes of the North-West Provinces.

(148) **American Scaup Duck.** (Blue-bill.)

(*Aythya marila.*)

The great majority of these birds are spring and autumn visitors to southern Ontario, but they do not go very far north to breed, and a great many spend the winter along the shores of Lake Ontario.

(149) **Lesser Scaup Duck.** (Little Blue-bill.)

(*Aythya affinis.*)

Like the last, the great bulk of these ducks are transient visitors in spring and autumn, but some breed in all the large marshes throughout the Province, even along our southern boundary where protected. Formerly they bred regularly in the marsh near Hamilton, and also in that near Toronto.

CHECK LIST OF THE

(150) **Ring-necked Duck.**

(*Aythya collaris*.)

Less abundant than the last, with which it is generally confused. It probably breeds throughout its range, for I have often seen it here in summer, though I never found its nest. In eastern Manitoba it breeds regularly.

GENUS CLANGULA.

(151) **American Golden-eye.** (Whistler.)

(*Clangula clangula americana*.)

Common winter visitor and probably breeds in the northern part of the Province, as it regularly does so in all the wooded parts of southern Manitoba.

The bulk arrive in southern Ontario about the end of October and remain until the ice breaks up in the spring.

(*) (152) **Barrow's Golden-eye.**

(*Clangula islandica*.)

An occasional visitor in winter.

GENUS CHARITONETTA.

(153) **Buffle-head.**

(*Charitonetta albeola*.)

Common spring and autumn visitor throughout the Province, breeding at some points in southern Ontario, and probably doing so regularly in the more northern portions.

They arrive as soon as the ice goes out in spring and remain in the autumn until their haunts are frozen over.

GENUS HARELDA.

(154) **Long-tailed Duck.** (Coween.)

(*Harelda hyemalis*.)

A very abundant winter resident on the lakes, arriving about the beginning of November and departing at the end of April. Breeds along the Arctic coast.

GENUS HISTRIONICUS.

(155) **Harlequin Duck.**

(*Histrionicus histrionicus*.)

A very rare visitor.

GENUS SOMATERIA.

(160) **American Eider.**

(Somateria dresseri.)

An occasional winter visitor. All the specimens of this duck taken here were in immature plumage, so far as I have been able to learn. Breeds on the North Atlantic coast.

(162) **King Eider.**

(Somateria spectabilis.)

Occurring more frequently than the last, but still only an occasional winter visitor. Breeds on the North Atlantic coast. Adult specimens of this duck in full plumage have several times been taken on our lakes in late autumn and early spring.

GENUS OIDEMIA.

(163) **Black Scoter.** (American Scoter.)

(Oidemia americana.)

A regular winter visitor on the great lakes, sometimes moving southward for a short time if the weather is very severe. Breeds in the Arctic regions.

(165) **White-winged Scoter.**

(Oidemia degiandi.)

A common winter resident, frequenting the great lakes. Breeds about the northern lakes from Labrador to British Columbia.

(166) **Surf Scoter.**

(Oidemia perspicillata.)

A regular visitor to our lakes in spring and autumn, probably some remain through the winter, though I have never observed it here in the coldest part of the season.

GENUS ERISMATURA.

(167) **Ruddy Duck.**

(Erismatura jamaicensis.)

Common in spring and autumn. Breeds from our southern boundary northward.

SUBFAMILY ANSERINÆ. (THE GEESE.)

GENUS CHEN.

(*) (169a) **Greater Snow Goose.** (Wavey.)

(Chen hyperborea nivalis.)

A rare visitor to the western part of this Province. Breeds in the barren grounds along the Arctic coast.

- (*) (169.1) **Blue Goose.**
(*Chen caerulescens.*)

An accidental visitor, which has been met with two or three times in this Province.

GENUS ANSER.

- (*) (171) **White-fronted Goose.**
(*Anser albifrons gambeli.*)

Of very rare occurrence. Breeds in extreme North-West.



Canada Goose.

GENUS BRANTA.

- (172) **Canada Goose.**
(*Branta canadensis.*)

A regular spring and autumn visitor to our marshes, but not nearly so abundant now as formerly. Mr. John Maughan informs me that even recently Geese have nested in the preserved marshes of Lake St. Clair and some probably breed in the unfrequented marshes of the northern part of the Province. They breed commonly in the Prairie Provinces.

- (*) (172a) **Hutchinson's Goose.**
(*Branta canadensis hutchinsii.*)

An occasional spring and autumn visitor. Breeds chiefly on the shore of the Arctic Sea.

(173) Brant.*(Branta bernicola.)*

A rare visitor. Breeds on the shores of the Arctic Sea.

SUBFAMILY CYGNINÆ. (THE SWANS.)

GENUS OLOR.

(* (180) Whistling Swan.*(Olor columbianus.)*

Of somewhat irregular occurrence; generally a few are seen in the spring. Breeds on the shores of the Arctic Sea.

(* (181) Trumpeter Swan.*(Olor buccinator.)*

Like the last, rarely seen now. Breeds on the barren grounds and in the marshes of the far north.

Order HERODIONES. (Hérons, Ibises, etc.)

Wading birds with compressed bodies, long legs and long neck; tibia naked below, feet not palmate; toes long and slender, cleft or slightly webbed, the hind toe long and usually not elevated, provided with a large claw. Wings broad, rounded, tail short. Head contracted to the stout base of the bill, which is long and usually hard and acute, with sharp cutting edges; nostrils small. They feed upon fish, frogs, mice, and such young birds as may fall in their way.

FAMILY IBIDIDÆ.

Bill very long and slender, compressed, cylindric, curved throughout, the upper mandible with a deep groove reaching nearly or quite to the tip; legs rather long, the toes slightly webbed at base. Head more or less naked; wings broad; tail short; tarsus scutellate in front.

GENUS PLEGADIS.

(* (186) Glossy Ibis.*(Plegadis autumnalis.)*

An accidental visitor. Mr. McIlwraith records the capture of two near Hamilton in 1857. I have not heard of any others.

FAMILY ARDEIDÆ. (THE HERONS, ETC.)

Bill straight, longer than the head, compressed, acute with sharp cutting edges; upper mandible grooved; nostrils linear; lores naked, the

bill appearing to run directly to the eyes, rest of head feathered; parts of the body with "powder-down tracts"—strips of short, dusty, or greasy down-like feathers—usually three pairs of these strips, *i.e.*, on the back above the hips, on the belly under the hips and on the breast; usually long plumes from the back of head in the breeding season. Wings broad. Tail very short. Tibiæ largely naked below; toes long and slender, hind toe on a level with the rest, its claw longer than middle claw; middle claw pectinate. Wading birds, feeding on fishes, frogs and any animal small enough for them to swallow.

SUBFAMILY BOTOURINÆ. (BITTERNS.)

GENUS BOTAURUS.

(190) American Bittern.
(*Botaurus lentiginosus*.)

A common summer resident, breeding throughout its range in the Province.

Arrives about the middle of April, departs about the middle of October.

GENUS ARDETTA.

(191) Least Bittern.
(*Ardetta exilis*.)

An abundant summer resident of the larger marshes of southern Ontario, breeding throughout its range.

Arrives about the middle of May and leaves early in September.

(191.1) Cory's Least Bittern.
(*Ardetta neoxena*.)

This species seems now to be a regular though very rare summer visitor to the marsh near Toronto. During the last few years over a dozen specimens have been taken there. I have not heard of its capture in any other part of the Province.

SUBFAMILY ARDEINÆ. (HERONS.)

GENUS ARDEA.

(194) Great Blue Heron.
(*Ardea herodias*.)

A common summer resident, breeding in communities in the interior of the Province.

Arrives early in April, departs about the middle of September.

GENUS HERODIAS.

(*) (196) **American Egret.**
(*Herodias egretta.*)

A wanderer from the south. About half a dozen specimens have been taken at various points in the Province.

GENUS EGRETТА.

(*) (197) **Snowy Heron.**
(*Egretta candidissima.*)

An accidental visitor to our southern border.

GENUS BUTORIDES.

(201) **Green Heron.**
(*Butorides virescens.*)

A regular though never a common summer resident of Ontario. It appears to be generally distributed, but is more frequently found breeding in the swamps near Lake Erie than elsewhere.

GENUS NYCTICORAX.

(202) **Black-crowned Night Heron.**
(*Nycticorax nycticorax nævius.*)

A regular and in places a common summer resident. They breed in the interior of the Province in communities.

As they are quite nocturnal in their habits, they are not often observed even where they are common.

GENUS NYCTANASSA.

(203) **Yellow-crowned Night Heron.**
(*Nyctanassa violacea.*)

One taken at Toronto by Mr. John Maughan.

Order PALUDICOLÆ. (Cranes, Rails, etc.)

Wading birds. The head rather compressed than globose. Bill hard and not sensitive, not adapted for probing in the mud. The hind toe little elevated. Omnivorous feeders.

FAMILY GRUIDÆ. (THE CRANES.)

Very large birds, with the legs and neck extremely long. Wings large, rather short. Tail short. Head more or less naked, with scattered hairlike feathers. Plumage compact without downy tracts. Bill as long as

longer than head, straight and slender; tibia extensively naked; tarsus scutellate; toes rather short, hind toe highly elevated.

GENUS GRUS.

(* (204) **Whooping Crane.**
(*Grus americana.*)

A bird of the West which has once straggled into this Province. Mr. McIlwraith records the capture of a specimen in the County of Addington in September, 1871.

(206) **Sandhill Crane.**
(*Grus mexicana.*)

An accidental visitor from the western prairies, which has been met with five or six times, in our Province. It is probable that some, if not all, of the specimens taken here should be referred to *G. canadensis*.

FAMILY RALLIDÆ. (THE RAILS, COOTS, ETC.)

Birds of medium or small size, with compressed bodies and large muscular legs. Wings short, rounded and concave; tail very short. Hind toe rather short, a little elevated; front toes very long. Bill not sensitive at tip. All the species skulk in swamps and marshes, usually keeping well under cover. They feed upon insects and such seeds as are produced in their haunts.

SUBFAMILY RALLINÆ. (THE RAILS.)

GENUS RALLUS.

(208) **King Rail.**
(*Rallus elegans.*)

A regular summer resident of the marshes of the western end of Lake Erie. I have not heard of its occurrence elsewhere.

(212) **Virginia Rail.**
(*Rallus virginianus.*)

An abundant summer resident of the marshes of Ontario, breeding throughout its range.

Arrives about the middle of April and leaves early in October.

GENUS PORZANA.

(214) **Carolina Rail.**
(*Porzana carolina.*)

Very abundant summer resident of the marshes all over the Province, breeding throughout its range.

Arrives about the middle of April, departs about the end of October.

(215) Yellow Rail.*(Porzana noveboracensis.)*

A regular, but not a common, summer resident of our marshes. I have found it in all large marshes from the St. Clair River, east to Toronto.

(*) (216) Black Rail.*(Porzana jamaicensis.)*

Very rare, probably a summer resident where it occurs. Dr. Cottle of Woodstock recorded the capture of a specimen at Ingersoll in 1850. In August, 1874, I took four at the upper end of the Dundas marsh and saw others. These birds are very secretive and it requires good dogs to flush them from the rank vegetation in which they skulk.

SUBFAMILY GALLINULINÆ. (GALLINULES.)

GENUS IONORNIS.

(218) Purple Gallinule.*(Ionornis martinica.)*

Of accidental occurrence here. One was taken in the marsh on the Rouge River east of Toronto in 1892.

GENUS GALLINULA.

(219) Florida Gallinule.*(Gallinule galeata.)*

A common summer resident of the marshes of southern Ontario, breeding throughout its range.

Arrives about the middle of April, departs towards the end of October.

SUBFAMILY FULICINÆ. (THE COOTS.)

GENUS FULICA.

(221) American Coot.*(Fulica americana.)*

Common summer resident; breeding sparingly in our southern marshes and more abundantly northward.

Order LIMICOLÆ. (The Shore Birds.)

Tibia more or less naked below, legs long, hind toe free and elevated, sometimes wanting. Head globose, abruptly sloping to the base of the bill; completely feathered (except in the case of *Pavoncella*); gape short; bill weak, flexible, more or less soft skinned and sensitive at tip in most cases, adapted for probing in the mud; nostrils slit-like, surrounded by soft skin.

The Limicolæ are all birds of small or medium size, frequenting sandy shores and the mud flats of marshes; the Woodcock alone being found in the woods.

FAMILY PHALAROPODIDÆ.

Small sandpiper-like birds, with the toes lobed, as in the Coots and Grebes, but the lobes narrower. Body depressed, the lower plumage thick as in the ducks, and capable of resisting water; wings long, tail short; tarsus much compressed.

GENUS CRYMOPHILUS.

(222) **Red Phalarope.**

(*Crymophilus fulcarius.*)

An irregular spring and autumn visitor of rare occurrence.

GENUS PHALAROPUS.

(223) **Northern Phalarope.**

(*Phalaropus lobatus.*)

An irregular spring and autumn visitor of rare occurrence.

GENUS STEGANOPUS.

(224) **Wilson's Phalarope.**

(*Steganopus tricolor.*)

An irregular spring and autumn visitor, but rather more frequently met with than either of the preceding Phalaropes.

FAMILY RECURVIROSTRIDÆ.

Birds with excessively long legs and the bill very slender, long, acute, and in our species curved upward.

GENUS RECURVIROSTRA.

(*) (225) **Avocet.**

(*Recurvirostra americana.*)

An accidental visitor from the prairies of the North-West, where it is common.

FAMILY SCOLOPACIDÆ. (SNIPES, SANDPIPERS, ETC.)

Bill elongated, usually longer than head, if short not Plover-like, being soft-skinned throughout; nasal grooves in the form of narrow

channels, ranging from half to nearly the whole length of the bill; sides of lower mandible usually also grooved; nostrils narrow exposed slits; head feathered. Wings usually thin and pointed; tail short and soft. Tibia rarely entirely feathered; hind toe present (except in *Calidris*); front toes cleft or slightly webbed. Birds of small or medium size. Sexes alike or female slightly larger. Seasonal changes in plumage often strongly marked. Eggs usually four, placed with the small ends together in a slight nest or depression in the ground.



Woodcock.

GENUS PHILOHELA.

- (228) **Woodcock.** (American Woodcock.)
(*Philohela minor*.)

Formerly an abundant summer resident of our swampy woods, but now becoming scarce. Breeds throughout its range.

Arrives about the end of March and departs in November, usually remaining until the first severe frost.

GENUS GALLINAGO.

- (230) **Wilson's Snipe.**
(*Gallinago delicata*.)

Abundant in spring and autumn, the majority going north to breed. Some, however, raise their young in all the larger marshes throughout the Province, from our southern border northward.

The first arrivals in spring generally appear before the end of March and in the autumn the last stragglers remain until the marshes freeze up.

CHECK LIST OF THE

GENUS MACRORHAMPHUS.

(231) **Dowitcher.**

(Macrorhamphus griseus.)

Formerly this bird was not uncommon on the shore of Lake Ontario during the migrations, but now it is a rather rare spring and autumn visitor.

GENUS MICROPALAMA.

(*) (233) **Stilt Sandpiper.**

(Micropalama himantopus.)

A rare visitor. I have never met with this species in its spring migration northward, but have several times taken it, on its return in July and August.

GENUS TRINGA.

(234) **Knot.**

(Tringa canutus.)

In the neighbourhood of Toronto and Hamilton I have found this species abundant from the twenty-fifth of May to the end of the first week in June. In the autumn it is seldom seen. Two or three times I have taken specimens in immature plumage in August, but that is all. Breeds in the Arctic regions.

GENUS ARQUATELLA.

(235) **Purple Sandpiper.**

(Arquatella maritima.)

A very rare visitor from the northern sea coast, usually occurring late in autumn. Breeds on the shores of the Arctic Ocean.

GENUS ACTODROMAS.

(239) **Pectoral Sandpiper.**

(Actodromas maculata.)

A common visitor to our marshes and sandbars. Not observed by me in the spring.

Arrives in July and departs about the end of October.

(240) **White-rumped Sandpiper.**

(Actodromas fuscicollis.)

Rather an uncommon species. Possibly breeding, as I have found them here, from the middle of June to the middle of October.

(241) **Baird's Sandpiper.**
(*Actodromas bairdii.*)

A regular and not uncommon visitor in the neighbourhood of Toronto and at Dundas. Not seen in spring.

Arrives in July, departs early in October.

(242) **Least Sandpiper.** (Stint.)
(*Actodromas minutilla.*)

Common spring and autumn visitor, arriving about the twentieth of May, departing early in September.

The bulk of these birds go north to breed, but I think some nest throughout their range in this Province, for some few pairs are always to be found on our sandy beaches all through the summer.

GENUS PELIDNA.

(243a) **Red-backed Sandpiper.** (Black-heart Plover.)
(*Pelidna alpina sakhalina.*)

A very abundant visitor in the spring, arriving about the twentieth of May and departing northward about the end of the first week in June.

In the autumn they are much less abundant, the bulk of them going south by another route. The first arrive early in October and by the end of the first week in November the last has gone.

GENUS EREUNETES.

(246) **Semi-palmated Sandpiper.** (Stint.)
(*Ereunetes pusillus.*)

Very abundant from about the twentieth of May to the end of the first week in June and from the middle of July until the end of the first week in September.

The bulk of them go further north to breed, but I have always found some pairs here during the summer.

GENUS CALIDRIS.

(248) **Sanderling.**
(*Calidris arenaria.*)

Very abundant in spring and autumn along the lake shores. Arrive about the tenth of May, depart in October. They spend the summer on their breeding grounds in the far north.

GENUS LIMOSA.

- (*) (249) **Marbled Godwit.**
(*Limosa fedoa.*)

A very rare visitor. Breeds in the North-West.

- (*) (251) **Hudsonian Godwit.**
(*Limosa hæmastica.*)

Rather more frequently seen than the last. Breeds on the barren grounds.

GENUS TOTANUS.

- (254) **Greater Yellow-legs.**
(*Totanus melanoleucus.*)

Common in spring from early in April, until the first week in May. In the autumn sometimes abundant; arriving towards the end of July and remaining until the end of October. Breeds in the far north.

- (255) **Yellow-legs.**
(*Totanus flavipes.*)

Not common in spring; abundant in autumn. Its movements in the spring correspond with those of the last species. In the autumn migration, it arrives early in July and leaves before the middle of September. Breeds in the barren grounds.

GENUS HELODROMAS.

- (256) **Solitary Sandpiper.**
(*Helodromas solitarius.*)

Generally distributed throughout the Province, but nowhere abundant.

In their spring migration these birds do not seem to visit southern Ontario, for only once have I seen it at that season, viz., May 6th, 1900. In July, after breeding, it may be found along the margins of our streams or upon muddy flats in the marshes. It departs about the end of September.

Dr. C. K. Clarke, of Kingston, has reported finding a nest of this Sandpiper near that town, and no doubt it breeds in the interior of the Province, as it is said to be a regular summer resident of Muskoka and Parry Sound.

GENUS SYMPHEMIA.

- (258) **Willet.**
(*Symphemia semipalmata.*)

A rare visitor. Breeds in the North-West.

GENUS PAVONCELLA.

(*) (260) **Ruff.**

(Pavoncella pugnax.)

A specimen of this European bird in some way wandered to Toronto and was taken there in 1882. There are a few other records of its occurrence in America, but it can only be regarded as a straggler on this continent.

GENUS BARTRAMIA.

(261) **Bartramian Sandpiper.** (Upland Plover.)

(Bartramia longicauda.)

This is a bird of the prairie and is of rare and local occurrence here. I have found it breeding in the Counties of Brant and Norfolk, and Dr. K. Clarke reports it as regularly nesting near Kingston.

GENUS TRYNGITES.

(262) **Buff-breasted Sandpiper.**

(Tryngites subruficollis.)

A rather rare and irregular visitor to Ontario during the autumn migration. I have usually found it in August.

Mr. McL'wraith, on the authority of Dr. Macallum, records the discovery of a nest and eggs of this species near Dunnville.

GENUS ACTITIS.

(263) **Spotted Sandpiper.**

(Actitis macularia.)

An abundant summer resident, breeding throughout the Province.

Arrives about the first of May, departs about the middle of September.

GENUS NUMENIUS.

(*) (264) **Long-billed Curlew.**

(Numenius longirostris.)

A very rare visitor usually in the spring. Breeds in Assiniboia, Alberta and westward.

(265) **Hudsonian Curlew.**

(Numenius hudsonicus.)

An irregular visitor, sometimes occurring in large numbers in spring; in the autumn it is rarely seen. Breeds on the barren grounds west of Hudson's Bay.

- (*) (266) **Eskimo Curlew.**
(*Numenius borealis.*)

A very rare visitor. Breeds on the barren grounds.

FAMILY CHARADRIIDÆ. (THE PLOVERS.)

Head rather large, nearly globose; bill of moderate length, shaped somewhat like a pigeon's bill, with a constriction behind the horny terminal portion; nasal fossæ lined with soft skin, through which the slit-like nostrils open. Wings long and pointed, usually reaching beyond the tip of the short tail. Toes, three in all our species (except *Squatarola*, in which the hind toe is present, but very small); tarsus reticulate; tibia naked below. Sexes similar, but seasonal changes of plumage great. Birds of this family frequent the open fields, sandy shores, or mud flats.

GENUS SQUATAROLA.

- (270) **Black-bellied Plover.**
(*Squatarola squatarola.*)

Common spring and autumn visitor, passing through in the spring migration between the twentieth of May and the end of the first week in June. They return from the north in August and remain until about the middle of October. Breeds in the Arctic regions.

GENUS CHARADRIUS.

- (271) **Golden Plover.** (American Golden Plover.)
(*Charadrius dominicus.*)

I have never found the Golden Plover in Ontario in the spring. Dr. C. K. Clarke informs me that it sometimes occurs near Kingston at that season.

In the autumn it is generally fairly abundant in most parts of the country, visiting the newly ploughed fields, the muddy flats of marshes and the sand bars of the lakes.

It arrives from the north towards the end of August and departs about the middle of October. Breeds on the barren grounds west of Hudson's Bay.

GENUS OXYECHUS.

- (273) **Killdeer.**
(*Oxyechus vociferus.*)

A common summer resident, generally distributed over the Province, breeding throughout its range.

Arrives about the end of March, departs early in October.

GENUS ÆGIALITIS.

(274) Semipalmated Plover. (Ring Plover.)
(*Ægialitis semipalmata.*)

Common in spring from about the middle of May to the end of the first week in June, when it goes north to breed. In July they return and are again abundant until the end of September, sometimes remaining even later. It has occasionally been found nesting in this Province.

(277) Piping Plover.
(*Ægialitis meloda.*)

A regular but not a common summer resident.

They arrive early in May and probably leave as soon as the young can fly, for I have never found them in the autumn.

A somewhat doubtful variety of this species, *Æ. n. circumcineta*, has been taken in Toronto occasionally.

(* (278) Snowy Plover.
(*Ægialitis nivosa.*)

Only two specimens have been taken in the Province to my knowledge. One mentioned by Mr. McIlwraith and the other now in the possession of Mr. J. H. Ames, of Toronto.

FAMILY APHRIZIDÆ. (THE TURNSTONES.)

Toes four, not webbed, the hinder short, well developed; tarsus scutellate in front; legs rather long; wings long and pointed; tail short; bill rather short.

GENUS ARENARIA.

(283) Turnstone. (Redshank)
(*Arenaria interpres.*)

Very abundant at some points along the lake shores in spring; particularly so in some seasons on the sandbar near Toronto and on Burlington Beach near Hamilton.

Arrives about the twenty-fifth of May and remains until the middle of June. In the autumn they are never common. A few in immature plumage return this way about the first of August and remain until the middle of September. Breeds on the Arctic coast from Hudson's Bay westward.

Order GALLINÆ. (The Gallinaceous Birds.)

Bill short, stout, convex, horny, not constricted, nostrils scaled or feathered; cutting edge of upper mandible overlapping the lower. Head often partly or wholly naked, sometimes with fleshy processes. Legs

stout, hind toe elevated, smaller than the other toes. Tarsus broadly scutellate, sometimes feathered, occasionally spurred in the males; claws blunt, not much curved. Wings short, strong, concave. Terrestrial in habit

A large order, including the chief game birds of the world, as well as most kinds of domesticated poultry.

FAMILY TETRAONIDÆ. (GROUSE, PARTRIDGES, ETC.)

Hind toe small, short; tarsus without spurs; head nearly or quite feathered.

SUBFAMILY PERDICINÆ. (PARTRIDGES.,



Quail.

GENUS COLINUS.

(-89) **Quail.** (Bob White.)
(*Colinus virginianus.*)

A common resident in the south-western counties of Ontario, sometimes ranging east to the County of Ontario. A valuable game bird and one of the farmer's best friends.

3a B.

Few birds are of greater utility than this. Its whole life is spent among the crops we cultivate, and its food consists during the summer months almost entirely of the insects which are injurious to plants. During the winter it consumes great quantities of weed seeds, a large portion of which are gathered from fence corners and other neglected parts of the farm lands. It is from these places that the cultivated fields are regularly seeded down with weeds every season, and the Quail is an important factor in keeping them in check.

SUBFAMILY TETRAONINÆ. (THE GROUSE.)

GENUS CANACHITES.

- (298) **Canada Grouse.** (Spruce Partridge.)
(*Canachites canadensis.*)

Common resident in the northern districts. It formerly ranged much further south than it does at present, but its tameness has led to its extermination in the settled parts of the country.

GENUS BONASA.

- (300) **Ruffed Grouse.** (Partridge.)
(*Bonasa umbellus.*)

A common resident in woodlands throughout the Province.

Three sub-species have been separated from the typical form, all of which are found here with endless intermediate variations.

GENUS LAGOPUS.

- (301) **Willow Ptarmigan.**
(*Lagopus lagopus.*)

A regular winter visitor to the northern parts of the Province, sometimes coming as far south as Sault Ste. Marie, Lake Superior.

Mr. J. H. Ames, of Toronto, has one, which was taken near Whitby on Lake Ontario.

GENUS TYMPANUCHUS.

- (305) **Pinnated Grouse.** (Prairie Hen, Prairie Chicken.)
(*Tympanuchus americanus.*)

Formerly a resident of the open country along our south-western border, but now extinct there.

GENUS PEDICÆTES.

- (308) **Sharp-tailed Grouse.** (Prairie Chicken.)
(*Pedicætes phasianellus.*)

A scarce resident of the north-western part of the Province. During the last few years several of these birds have strayed into Parry Sound

and Muskoka. It is possible that as these districts are cleared and become more prairie like, the Sharp-tail may find them adapted to its requirements and become more abundant there.

FAMILY PHASIANIDÆ. (THE PHEASANTS, TURKEYS, ETC.)

The chief family of the Gallinæ, differing as a whole from the Tetraonidæ in having the tarsus in the male armed with a spur. In many species the head is naked, in others the tail is long and vaulted or otherwise peculiar.



Wild Turkey.

SUBFAMILY MELEAGRINÆ.

GENUS MELEAGRIS.

(*) (310a) **Wild Turkey.**
(*Meleagris gallopavo silvestris.*)

Formerly common in all the south-western counties, ranging east into Wentworth. There may still be a few left in that district, but I have not heard of any for several years.

Resident wherever found.

Order COLUMBÆ. (The Pigeons.)

Bill straight, compressed, the horny tip separated by a constriction from the soft part. Nostrils opening beneath a soft, humid membrane or cere, at base of bill. Frontal feathers sweeping in a strongly convex outline across base of upper mandible. Hind toe on a level with the others. Tail in our species long, wedge shaped, the feathers pointed.

FAMILY COLUMBIDÆ. (PIGEONS.)

Wings long, pointed; plumage compact, the feathers loosely inserted.



Passenger Pigeon.

GENUS ECTOPISTES.**(315) Passenger Pigeon.**
(*Ectopistes migratorius.*)

Formerly a very abundant summer resident, occurring in flocks of countless thousands, but now very scarce.

Dr. C. K. Clarke informs me that he found a small colony breeding in eastern Ontario in 1898.

GENUS ZENAIDURA.**(316) Mourning Dove.**
(*Zenaidura macroura.*)

A common summer resident, but somewhat locally distributed. Breeding throughout its range.

The great majority of these birds are migrants, arriving here in April and leaving in October, but during the last few years small flocks have been seen in several localities, all through the winter.

Order RAPTORES. (The Birds of Prey.)

Carnivorous birds, often of large size and great strength. Bill strong, cere^d base, hooked at the end. Claws very strong, except in the Vultures. Tibia, and often the tarsus, feathered. Hind toe developed, elevated or not.

Some of them feed upon carrion, others upon reptiles or fishes, but the most of them upon small mammals, birds and insects.

This order includes a large number of very useful birds, while a few of them may be considered injurious by reason of their raids upon domestic fowls.

FAMILY CATHARTIDÆ. (AMERICAN VULTURES.)

Head and part of neck bare. Eyes lateral; ears small. Bill lengthened, comparatively weak and but little hooked; nostrils perforate. Wings very long and strong, giving a strength and grace of flight which is not excelled by any other birds. Hind toe short and elevated; front toes long, somewhat webbed, with rather weak and straightish claws. Large, slovenly looking birds, without the strength and spirit of the Hawks and Owls. They are voracious consumers of carrion and animal refuse of all kinds, and hence are valued as scavengers in the warm countries where they most abound.

GENUS CATHARTES.

(*) (325) Turkey Vulture. (*Cathartes aura*.)

A great wanderer, which is of occasional occurrence in Ontario, specimens having been taken at various places from the eastern boundary to the west, where it was formerly not uncommon.

FAMILY FALCONIDÆ. (FALCONS, HAWKS, EAGLES, ETC.)

Head fully feathered; no ear tufts. Eyes lateral; eyelids provided with lashes; usually a projecting bony eyebrow; no complete facial disk. Toes always naked; tarsus naked also except in *Aquila* and *Archibuteo*. Hind toe not elevated. Bill stout, strongly hooked, its base not hidden by feathers. Claws very strong and sharp, the hind claw not shorter than the others.

SUBFAMILY ACCIPITRINÆ. (KITES, HAWKS, EAGLES, ETC.)

GENUS ELANOIDES.

(327) **Swallow-tailed Kite.**
(*Elanoides forficatus.*)

Mr. McIlwraith records the occurrence of this species in western Ontario and also at Ottawa, and it is quite likely to be seen here again, as it is a great wanderer.



Marsh Hawk.

GENUS CIRCUS

(331) **Marsh Hawk.**
(*Circus hudsonius.*)

Very common summer resident, breeding in secluded marshy places throughout the Province. Arrives early in April, departs about the end of October. One of our most useful Hawks, feeding principally upon the destructive meadow mouse. This Hawk may readily be distinguished from all others by its low skimming flight, as it works over the meadows in search of its favorite food, and also by the white patch at the base of its tail, which is very conspicuous. A heavy penalty should be inflicted on persons who destroy these birds.

GENUS ACCIPITER.

(332) Sharp-shinned Hawk.
(*Accipiter velox.*)

Common summer resident, breeding throughout its range. Arrives early in April. The bulk depart about the middle of September, but stragglers often remain until the end of October.

This bird is very destructive to young poultry and the small insectivorous birds.

(333) Cooper's Hawk.
(*Accipiter cooperi.*)

A summer resident, but not nearly so abundant as the last. Breeds in the interior of the Province.

A very destructive hawk.

(334) Goshawk.
(*Accipiter atricapillus.*)

(A winter visitor to southern Ontario. Resident and breeding in the interior.

This hawk is capable of killing fullgrown fowls and does so at every opportunity.

GENUS BUTEO.

(337) Red-tailed Hawk.
(*Buteo borealis.*)

A common summer resident, breeding in the interior. Arrives early in March, departs at the beginning of November. A few have been seen in winter.

A dark form of this hawk now given sub-specific rank as the Western Red-tailed Hawk, *B. b. calurus*, has been occasionally taken in Ontario.

This is one of the most useful species, feeding largely upon meadow mice, grasshoppers, and frogs.

(339) Red-shouldered Hawk.
(*Buteo lineatus.*)

Common summer resident. Less frequently seen than the last, or perhaps more local in its distribution. Breeds in the interior. Arrives a little later than the Red-tail and leaves towards the end of October. I have seen specimens in winter, but not often.

A very useful hawk, feeding chiefly on mice, reptiles and grasshoppers.

(*) (342) **Swainson's Hawk.**
(*Buteo swainsoni*.)

A rare visitor from the western prairies, where it is abundant.

(343) **Broad-winged Hawk.**
(*Buteo platypterus*.)

A common summer resident, breeds throughout its range. A useful species.



American Rough-legged Hawk.

GENUS ARCHIBUTEO.

(347) **American Rough-legged Hawk.**
(*Archibuteo lagopus sancti-johannis*.)

A common visitor in spring and autumn, probably a summer resident in the northern portion of the Province.

They arrive early in April and the bulk have departed by the end of November.

One of our most beneficial birds, its food consisting almost entirely of mice and grasshoppers.

I have found as many as eight meadow mice in the stomach and crop of one of these birds.

GENUS AQUILA.

- (*) (349) **Golden Eagle.**
(*Aquila chrysaetos.*)

An irregular visitor to southern Ontario, probably resident in the unsettled north country.

GENUS HALIÆTUS.

- (352) **Bald Eagle.**
(*Haliæetus leucocephalus alascanus.*)

A resident species which until a few years ago regularly bred in certain localities along the shores of our lakes, but which has now retired to the quiet of the interior to raise its young, visiting southern Ontario in winter.

SUBFAMILY FALCONINÆ. (FALCONS.)

GENUS FALCO.

- (353) **White Gyrfalcon.**
(*Falco islandus.*)

An accidental visitor.

- (354) **Gray Gyrfalcon.**
(*Falco rusticolus.*)

As rare as the last.

- (356) **Duck Hawk.**
(*Falco peregrinus anatum.*)

A regular, but not a common, autumn visitor to southern Ontario. Rarely seen in spring. Has been found breeding in eastern Ontario and also in Muskoka.

- (357) **Pigeon Hawk.**
(*Falco columbarius.*)

Not often seen in the spring, but common in autumn. I have occasionally seen it in winter. The great majority go south about the end of September.

It breeds in the unsettled districts of the interior from Muskoka northward.

- (360) **Sparrow Hawk.**
(*Falco sparverius.*)

A common summer resident, breeds throughout its range. Arrives early in April, departs about the end of September.

A very useful bird, feeding on mice and insects chiefly. Two or three times when I have taken these Hawks in early summer, I have found their stomachs filled with cutworms and at the same time noticed that

their feet were covered with mud. Just how they obtain these underground larvæ I have not been able to ascertain, but it would seem that they either scratch them out or are able in some way to locate the spot at which they are hidden and can then capture them by thrusting their claws into the moist soil.

GENUS POLYBORUS.

(362) **Audubon's Caracara.**
(*Polyborus cheriway.*)

Mr. G. E. Atkinson has recorded finding a dead specimen washed up on the north shore of Lake Superior on the 18th of July, 1892.

SUBFAMILY PANDIONINÆ. (OSPREYS.)

GENUS PANDION.

(364) **American Osprey.** (Fish Hawk.)
(*Pandion haliaëtus carolinensis.*)

A common summer resident, breeding in suitable places through the Province. Its nesting places now are in the unsettled parts of the interior, where the lakes are still surrounded by trees sufficiently large to meet the bird's requirements.

Arrives in April, departs at the end of September.

SUBORDER STRIGES. (OWLS.)

FAMILY STRIGIDÆ. (THE BARN OWLS.)

A small family comprising those owls which have long faces, the facial disk being complete and subtriangular. The middle and inner toes are about equal in length and the middle claw is pectinate below.

GENUS STRIX.

(*) (365) **American Barn Owl.**
(*Strix pratincola.*)

A rare visitor from the south. Five or six specimens of this bird have been met with in southern Ontario.

FAMILY BUBONIDÆ. (THE HORNED OWLS, ETC.)

Head very large, shortened lengthwise, and greatly expanded laterally, the eyes directed forwards and partly surrounded by a more or less complete circular disk of radiating feathers of peculiar texture; loreal feather antrorse, long and dense; feathers on the sides of forehead often elongated into earlike tufts. Plumage very soft and lax, rendering the flight almost noiseless; its colours blended and mottled so as to baffle description. External ear very large, often provided with a movable

flap. Outer toe reversible; claws very sharp, long, and strong; inner toe shorter than middle; middle claw not pectinate. All our species are nocturnal except *Nyctea* and *Surnia*.

GENUS ASIO.

(366) **American Long-eared Owl.**
(*Asio wilsonianus*.)

A fairly common summer resident, breeding throughout its range in the Province, wherever there are woods. More frequently seen in the autumn than at any other season.

Feeds almost entirely upon meadow mice and large insects. I have examined a great many of these birds and so far have never found anything else in their stomachs; never even the trace of a feather.



Short-eared Owl.

(367) **Short-eared Owl.** (Marsh Owl.)
(*Asio accipitrinus*.)

This Owl is sometimes very common in the autumn, about the low meadows and marshes. In such places I have found them also during the winter at times. Its movements seem to depend altogether upon the food supply. When meadow mice are abundant and available the owls will remain and feed upon them, but if the snow becomes deep so that

the mice are entirely protected by it, then the owls go south. This bird is peculiarly adapted to act as a check upon the undue increase of field mice. It lives and breeds entirely in the places most frequented by them, and so long as these destructive creatures can be obtained, the Owl will feed upon them; apparently preferring them to any other food. When the supply of mice fails, however, these Owls will feed upon such small birds as may be found in their haunts, and will at times kill more than they can devour.

Dr. C. K. Clarke informs me that it has been found nesting in the marsh near Kingston, and as I have seen it during the summer months in other marshes, no doubt it breeds sparingly in southern Ontario and more abundantly in suitable places in the northern part of the Province.

If these Owls were less persecuted than they are, they would certainly breed here whenever their favourite food was abundant, as they do in Great Britain, and we should then hear less about the damage done to grain and fruit trees by meadow mice.

GENUS SYRNIUM.

(368) **Barred Owl.**

(Syrnium varium.)

This bird is generally distributed through the Province, as far north as Lake Superior and the Ottawa River, but is not common anywhere; there are certain places at which it appears regularly every autumn, while in other localities it is rarely, if ever, seen. Nests have been found all through its range.

It is not sufficiently abundant to be of importance from an agricultural point of view. Those I have taken here always contained mice, but to the south of us, where the poultry are allowed to roost on trees, it is accused of killing half-grown chickens.

GENUS SCOTIAPTEX.

(370) **Great Grey Owl.** (Cinereus Owl.)

(Scotiaptex nebulosa.)

An irregular winter visitor, occasionally occurring in considerable numbers and a few are found here nearly every season. Breeds in the Arctic regions.

GENUS CRYPTOGLAUX.

(*) (371) **Richardson's Owl.**

(Cryptoglaux tengmalmi richardsoni.)

A winter visitor from the far north, seldom seen in southern Ontario.

(372) **Saw-whet Owl.**

(Cryptoglaux acadica.)

Although this little Owl is a resident of Ontario, it is peculiar in its distribution. It is most frequently seen in winter and will in some sea-

sons be quite common in a locality for a time and may not again be seen there for several years. Like all other birds of prey, it is attracted to places where food is abundant. It breeds sparingly in southern Ontario and probably commonly in the undisturbed woods of the interior.

Its food consists almost entirely of mice; when these are scarce, an occasional insect or small bird is taken.



Screech Owl.

GENUS MEGASCOPS.

(373) **Screech Owl.**
(*Megascops asio.*)

A common resident in southern Ontario, breeding throughout its range.

A particularly useful bird and one which, if left unmolested, will become almost domesticated. It will take up its abode in and about the barns and outbuildings and soon becomes comparatively tame. It is the most indefatigable mouser we have, for not only does it kill mice to supply its immediate wants, but also for the pleasure of hunting them. Besides this, it also does useful work in keeping the common House Sparrow within proper limits.

GENUS BUBO.

(375) **Great Horned Owl.**
(*Bubo virginianus*.)

A common resident, breeding throughout its range. The strongest and most courageous of our birds. Its prey. Commonly considered to be injurious to the farmer, because it occasionally kills poultry. No doubt it will do this in winter, when its natural food is difficult to get; but the farmer who leaves his fowls to roost out and unprotected on cold nights cannot find them very profitable and certainly deserves to lose them. As against this, should be set off the value of the bird's services in keeping in check the rats, mice, crows and other injurious creatures; even skunks often fall victims to the Horned Owl's strength and rapacity.

GENUS NYCTEA.

(376) **Snowy Owl.**
(*Nyctea nyctea*.)

A winter visitor, occurring in varying numbers almost every season. This is a diurnal species, hunting its prey much after the fashion of the falcons.

Breeds in the Arctic regions.

GENUS SURNIA.

(377) **Hawk Owl.** (American Hawk Owl.)
(*Surnia ulula caparech*.)

A regular winter visitor in northern Ontario, not often seen in the southern portions of the Province.

It is diurnal, and when hunting adopts much the same methods as our Sparrow Hawk. In northern Manitoba, where it is rather common in winter, I frequently saw it hovering over the snow-covered plains just as our little Hawk does over the fields in summer.

Breeds in the far north.

Order COCCYGES. (Cuckoos and Kingfishers.)

This order is not very largely represented in Canada. The families comprised in it have but little in common so far as outward appearance is concerned, but the characteristics of each are well marked.

SUBORDER CUCULI. (CUCKOOS.)

FAMILY CUCULIDÆ. (CUCKOOS.)

Bill gently curved, lengthened, without rectal bristles or nasal tufts. Tongue not extensible. Tarsus long, nearly naked. Toes not webbed, cleft to base; two in front, two behind. Tail long in our species.

Arboreal birds of great economic value, feeding almost entirely on insects. They devour great numbers of tent caterpillars and the various hairy larvæ, which are rejected by most birds.

SUBFAMILY COCCYZINÆ. (AMERICAN CUCKOOS.)

GENUS COCCYZUS.

(387) **Yellow-billed Cuckoo.**

(Coccyzus americanus.)

A regular, but not a common, summer resident; breeding throughout its range.

(388) **Black-billed Cuckoo.**

(Coccyzus erythrophthalmus.)

A common summer resident, breeding throughout its range.

Arrives about the twentieth of May, departs about the end of September.

SUBORDER ALCYONES. (KINGFISHERS.)

FAMILY ALCEDINIDÆ. (KINGFISHERS.)

Head large; bill long, straight and strong; gape deep, edges not serrate. Wings long; tail short. Tarsus very short. Toes three in front, one behind, the outer and middle toes united half their length, with a continuous sole beneath.

We have but one species.

GENUS CERYLE.

(390) **Belted Kingfisher.**

(Ceryle alcyon.)

A common summer resident, breeding throughout its range.

Arrives about the beginning of April, departs early in October. I have several times found these birds spending the winter on rapid streams in southern Ontario, and once near Bala in Muskoka.

Order PICI. (Woodpeckers, etc.)

Feet zygodactyle, i.e., having the toes in pairs—two forward and two behind (except in Picoides, in which the hind toe is wanting). Tail feathers pointed and with strong shafts; used as a prop to assist the birds in supporting themselves against the trunks of trees.

FAMILY PICIDÆ. (WOODPECKERS.)

Bill stout, usually straight, with the tip distinctly truncate (except in Colaptes), adapted for hammering or boring into wood. Tongue long, flattish, barbed, capable of great protrusion, adapted for securing insects (except in Sphyrapicus.) Hyoid process peculiar, the horns generally very long, curving up around the skull behind and over forward again to the ear, or beyond. Claws compressed, sharp and strong.

All are chiefly insectivorous, the majority of them obtaining their food by boring into the trunks of trees and extracting the larvæ which feed upon the cambium.

These birds are of great economic value to the farmer, fruit-grower and forester, and should be strictly protected by everyone having the slightest interest in trees.

GENUS DRYOBATES.

(393) **Hairy Woodpecker.**
(*Dryobates villosus.*)

A common resident, breeding throughout the Province. The variety *D. v. leucomelas*, is the form chiefly found in southern Ontario.



Downy Woodpecker.

(394) **Downy Woodpecker.**
(*Dryobates pubescens.*)

A common resident, breeding throughout the Province. Our form is chiefly *D. p. medianus*.

GENUS PICOIDES.

(400) **Arctic Three-toed Woodpecker.**
(*Picoides arcticus.*)

Common resident in the northern part of the Province, rare winter visitor in the southern part.

Breeds in the northern part of its range.

(*) (401) **American Three-toed Woodpecker.**
(*Picoides americanus.*)

Resident in the northern part of Ontario, but much less abundant than the last. Occasionally wanders into southern Ontario during the winter.

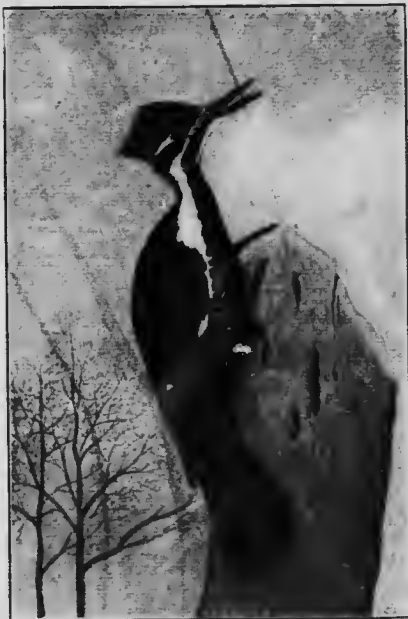
GENUS SPHYRAPICUS.

(402) **Yellow-bellied Woodpecker.** (Sapsucker.)
(*Sphyrapicus varius.*)

A common summer resident, breeding throughout its range in the Province.

Arrives about the middle of April, departs about the middle of September.

It is this species only which bores holes in the bark of trees for the purpose of obtaining the sap.



Pileated Woodpecker.

GENUS CEOPHLÆUS.

(405) **Pileated Woodpecker.** (Cock of the Woods.)
(*Ceophlæus pileatus.*)

Resident, but restricted to that part of the country still covered with heavy timber. Breeds throughout its range in the Province.

Our form is *C. p. abieticola.*

†a B.

GENUS MELANERPES.

(406) **Red-headed Woodpecker.**
(*Melanerpes erythrocephalus.*)

A summer resident, still common, but much less abundant than it was a few years ago. Breeds throughout its range.

Arrives early in May, departs early in September.

GENUS CENTURUS.

(*) (409) **Red-bellied Woodpecker.**
(*Centurus carolinus.*)

Rare summer resident in the south-western counties; occurring regularly as far east as the County of Wentworth. Breeds throughout its range in the Province.

GENUS COLAPTES.

(412) **Flicker.** (Golden-winged Woodpecker, High-holer.)
(*Colaptes auratus.*)

Common summer resident. Breeds throughout the Province.

Arrives about the middle of April, departs early in October.

A form is *C. a. luteus.*

Though classed amongst the Woodpeckers, by reason of certain similarities of structure, it does less wood-pecking than any other of its family, its beak not being so well fitted for that operation as the beaks of the others. It is chiefly a ground feeder, ants forming a large portion of its food. For the purpose of enabling it to capture these insects in their underground burrows, its tongue is peculiarly specialized.

Order MACROCHIRES. (Goatsuckers, Swifts and Humming Birds.)

Wings very long and pointed. Tarsus short; feet small and weak, with three toes in front, one behind. The hind toe usually somewhat elevated.

FAMILY CAPRIMULGIDÆ.

Mouth highly specialized, the gape enormously wide, beak short. In *Antrostomus* the rectal bristles are long and coarse, very distinct. Plumage soft in texture, much marbled and mottled with black, brown, grey and yellowish white, the combination forming a splendid example of protective coloration. The middle claw pectinate. Largely nocturnal. Entirely insectivorous, obtaining their food while on the wing.

GENUS ANTROSTOMUS.

(417) Whip-poor-will.
(*Antrostomus vociferus.*)

A common resident in the woods. Breeds throughout its range in the Province.

Arrives early in May, departs early in October.



Whip-poor-will.

GENUS CHORDEILES.

(420) Night Hawk.
(*Chordeiles virginianus.*)

An abundant summer resident. Breeds throughout its range in the Province.

Arrives about the middle of May, departs early in September.

SUBORDER CYPSELI. (SWIFTS.)

FAMILY MICROPODIDÆ. (SWIFTS.)

SUBFAMILY CHÆTURINÆ. (SPINE-TAILED SWIFTS.)

Bill weak and small, gape large, deeply cleft. Wings very long, thin and pointed; secondaries very short. Feet small, weak, toes completely cleft; middle claw not pectinate; no rectal bristles. In our species tail rounded, its feathers with the shaft spinous, projecting beyond the plumage; the salivary glands are highly developed and their secretion is used as a glue in the construction of the nest.

GENUS CHÆTURA.

(423) **Chimney Swift.** (Chimney Swallow.)
(*Chætura pelagica.*)

An abundant summer resident. Breeds throughout its range in the Province. Formerly nested in hollow trees, but has abandoned them and now takes up its residence in chimneys and barns.

Arrives early in May, departs at the end of August or early in September.

SUBORDER TROCHILI. (HUMMING BIRDS.)

FAMILY TROCHILIDÆ. (HUMMING BIRDS.)

Bill long, pointed, awl-shaped. Tongue capable of great protrusion. Wings long and pointed; secondaries short. Feet very small, with long, sharp claws. Smallest of all our birds. Feeds largely upon small insects and the nectar from flowers. It usually obtains its food while hovering about the blossoms of plants.



Ruby-throated Humming Bird.

GENUS TROCHILUS.

(428) **Ruby-throated Humming Bird.**
(*Trochilus colubris.*)

A common summer resident. Breeds throughout its range in the Province. Arrives about the middle of May, departs about the middle of September.

Order PASSERES. (Perching Birds.)

Toes always four; feet fitted for perching; the hind toe always on a level with the rest; its claw at least as long as that of the middle toe; none of the toes versatile and none webbed; wing coverts few, chiefly in two series.

SUBORDER CLAMATORES. (SONGLESS PERCHING BIRDS.)**FAMILY TYRANNIDÆ. (TYRANT FLYCATCHERS.)**

Bill typically broad, triangular, depressed, abruptly hooked and notched at tip, with long rectal bristles; commissure nearly straight; nostrils small, usually partly concealed. Tarsus with its back and sides as well as the front covered with scutella, so that there is no undivided ridge behind, as in most other Passeres.

All our species are insectivorous, capturing their food by darting upon it from some elevated perch. The whole family are decidedly beneficial to agriculture. Some of them have very pleasant notes, but none of them are songsters.

GENUS TYRANNUS.**(444) Kingbird.**
(*Tyrannus tyrannus.*)

An abundant summer resident; breeds throughout its range in the Province.

Arrives about the tenth of May, departs about the end of August.

GENUS MYIARCHUS.**(452) Crested Flycatcher.**
(*Myiarchus crinitus.*)

Common summer resident, breeding in woods and orchards throughout its range in the Province.

Arrives about the middle of May, departs about the end of August.

GENUS SAYORNIS.**(456) Phœbe.**
(*Sayornis phœbe.*)

An abundant summer resident, breeding about farm buildings and bridges throughout its range in the Province.

Arrives early in April, departs early in October.

A most useful bird and one that will return year after year to its nesting place on the farm, if not molested.

GENUS NUTTALLORNIS.

(459) **Olive-sided Flycatcher.**
(*Nuttallornis borealis.*)

A regular but uncommon visitor to southern Ontario. I have found one or two each spring for several years, but have not seen it at any other season. It is said to be common and breed in the Muskoka and Parry Sound Districts.

GENUS CONTOPUS.

(461) **Wood Pewee.**
(*Contopus virens.*)

Common summer resident, breeding in woods throughout its range in the Province.

Arrives about the middle of May, departs about the middle of September.

GENUS EMPIDONAX.

(463) **Yellow-bellied Flycatcher.**
(*Empidonax flaviventris.*)

A rather uncommon visitor. I have seen a few each spring, but never later than June.

It breeds regularly in the wooded parts of the interior.

(466) **Traill's Flycatcher.**
(*Empidonax trailli.*)

The eastern form, *E. t. alorum*, is a regular visitor, generally distributed, but never common. It frequents low grounds where alders and willows flourish. Breeds in the interior.

(467) **Least Flycatcher.**
(*Empidonax minimus.*)

Common summer resident, breeding in orchards, shrubberies and woodlands throughout its range in the Province.

Arrives about the middle of May, departs at the end of August.

SUBORDER OSCINES. (SONG BIRDS.)

FAMILY ALAUDIDÆ. (THE LARKS.)

Tarsus obtuse and scutellate behind as well as in front. Bill short; nostrils concealed by tufts of antrorse feathers; hind claw very long and nearly straight; inner secondaries lengthened and flowing. Our species have a little tuft of lengthened black feathers over each ear and the tail not forked.

GENUS OTOCORIS.

- (*) (474) **Horned Lark.** (Shore Lark.)
(*Otocoris alpestris*.)

This form of the Shore Lark is a winter visitor and is rarely seen now.

Twenty-five years ago it was common here in severe weather, frequently with the Snow Buntings. I have never found it breeding in the Province. Its summer home is in the far north.

- (474b) **Prairie Horned Lark.**
(*Otocoris alpestris praticola*.)

This sub-species is now a common summer resident, breeding in open fields wherever it occurs in the Province.

It appears to have extended its range from the prairies as the timber has been cleared off and the land brought under cultivation.

Arrives about the tenth of February, departs late in November. In the south-western counties it is resident, large numbers remaining there all through the winter.

FAMILY CORVIDÆ. (THE CROWS AND JAYS.)

Bill long and strong, usually notched, its commissure not angulated; nostrils usually concealed by tufts of bristly feathers, which are branched to their tips. Tarsus sharp behind, its sides undivided and separated from the scutella in front by a groove, which is either naked or filled in with small scales. Voice usually harsh and unmusical.

GENUS CYANOCITTA.

- (477) **Blue Jay.**
(*Cyanocitta cristata*.)

A common resident, breeding throughout its range in the Province.

GENUS PERISOREUS.

- (484) **Canada Jay.**
(*Perisoreus canadensis*.)

A common resident in the northern part of the Province. Breeds in the northern part of its range.

SUBFAMILY CORVINÆ. (CROWS.)

GENUS CORVUS.

- (486a) **Northern Raven.**
(*Corvus corax principalis*.)

Tolerably common in the interior of the Province. Probably breeds in the remote forests towards James Bay.

- (488) **Common Crow.**
(*Corvus brachyrhynchos*.)

Abundant resident in southern Ontario, summer resident in the northerly portions of the Province. Breeds throughout its range.

FAMILY ICTERIDÆ. (THE AMERICAN ORIOLES AND BLACKBIRDS.)

Bill with the commissure angulated, usually lengthened, rarely shorter than head, straight or gently curved, without notch or rictal bristles; culmen usually extending upon the forehead, dividing the frontal feathers. Legs stout, adapted for walking in all our species, except those in *Icterus*.

Dolichonyx and *Molothrus* are somewhat Finch-like, having the bill shorter than head.

GENUS DOLICHONYX.

(494) **Bobolink.**

(*Dolichonyx oryzivorus*.)

Abundant summer resident. Breeds in the hay meadows throughout its range, which does not extend north of the cultivated country.

Arrives about the tenth of May, departs about the end of August.



Cowbird.

GENUS MOLOTHRUS.

(495) **Cowbird.**

(*Molothrus ater*.)

An abundant summer resident, deposits its eggs in the nests of other small birds. Breeds throughout its range.

Arrives about the first of April and departs early in October.
This is the most injurious bird we have, as each egg deposited by it means the destruction of a whole brood of one of our beneficial species.

GENUS XANTHOCEPHALUS.

- (497) **Yellow-headed Blackbird.**
(*Xanthocephalus xanthocephalus.*)

A very rare summer visitor from the western prairies.

GENUS AGELAIUS.

- (498) **Red-winged Blackbird.**
(*Agelaius phœniceus.*)

A very abundant summer resident, breeding in marshes or clover fields throughout its range.

Arrives about the middle of March, departs about the middle of October.



Meadowlark.

GENUS STURNELLA.

- (501) **Meadowlark.**
(*Sturnella magna.*)

A common summer resident in southern Ontario, gradually extending its range northward as the land is cleared.

Breeds on the ground in meadows throughout its range.

Arrives towards the end of March, departs late in October or early in November.

In mild seasons these birds stay very late, and I have on several occasions found small parties of them spending the winter here.

This species is of great value to the farmer, as it lives almost entirely in the cultivated fields and with us feeds upon the insects most injurious to the crops. The western form, *S. m. neglecta*, has been taken by Mr. White at Ottawa.

GENUS ICTERUS.

(*) (506) **Orchard Oriole.**
(*Icterus spurius*.)

A regular, but not common, summer resident in the south-western counties, breeding in orchards and shrubberies. I found it every season in Haldimand and Norfolk and of late years a few pairs have regularly bred near Toronto.

(507) **Baltimore Oriole.**
(*Icterus galbula*.)

A common summer resident, breeding throughout its range in the Province.

Arrives early in May, departs about the end of August.

GENUS EUPHAGUS.

(509) **Rusty Blackbird.**
(*Euphagus carolinus*.)

A common migrant through Ontario, it arrives in spring about the middle of April and passes northward without much delay; about the end of September they return and soon become abundant in the marshes, where they remain until the end of October.

Probably breeds in the northern part of the Province.

GENUS QUISCALUS.

(511b) **Bronzed Grackle.**
(*Quiscalus quiscula æneus*.)

A common summer resident, breeding in colonies throughout its range in the Province.

Arrives about the middle of March, departs early in October.

FAMILY FRINGILLIDÆ. (FINCHES, SPARROWS, ETC.)

Bill cone shaped; the commissure angulated. Nostrils high up, exposed, or, in some northern species, partly covered by a ruff of small feathers. Tarsus scutellate in front with an undivided ridge behind.

All the Finches are granivorous, feeding largely on seeds when adult. None of them, however, reject insects whenever they can be ob-

tained, and the young while in the nest are fed entirely upon insects which are carried to them by their parents. In there is any exception to this rule it will be in the genera *Astragalinus* and *Spinus*.

GENUS *HESPERIPHONA*.

(514) **Evening Grosbeak.**

(*Hesperiphona vespertina*.)

An accidental visitor from the west, sometimes occurring in winter.

GENUS *PINICOLA*.

(515) **Pine Grosbeak.**

(*Pinicola enucleator leucura*.)

An irregular winter visitor to southern Ontario; in some seasons quite common, in others entirely absent.

Probably breeds in the extreme north of the Province.

GENUS *CARPODACUS*.

(517) **Purple Finch.**

(*Carpodacus purpureus*.)

Common resident; breeds throughout its range in the Province. Most frequently noticed in early spring when the flocks move out of their winter quarters and visit the budding hardwood trees.

GENUS *PASSER*.

House Sparrow.

(*Passer domesticus*.)

An importation from Europe, now an abundant resident, breeding wherever it occurs.

GENUS *LOXIA*.

(521) **American Crossbill.**

(*Loxia curvirostra minor*.)

A regular and sometimes an abundant winter visitor.

As I have found representatives of this species in southern Ontario in nearly every month of the year, I think they breed throughout the Province, wherever there are pine forests still standing.

(522) **White-winged Crossbill.**

(*Loxia leucoptera*.)

An irregular winter visitor to southern Ontario, more abundant. Of regular occurrence in the northern part of the Province, where it is said to be resident.

GENUS ACANTHIS.

(*) (527) **Greenland Redpoll.**

(*Acanthis hornemanni*)

Probably occurs as a winter visitor but I have no record of other than that given by Mr. M. Ilwath.

(*) (527a) **Hoary Redpoll.**

(*Acanthis hornemanni philipsi*.)

A somewhat irregular winter visitor, occurring in varying numbers at any time between September and May.

(528) **Common Redpoll.**

(*Acanthis linaria*.)

Generally common in winter, but sometimes entirely absent. Breeds in the far north; commonly near Hudson's Bay.

(*) (528a) **Holboell's Redpoll.**

(*Acanthis linaria holboellii*.)

Occurs in winter sparingly with the other Redpolls.

(*) (528b) **Greater Redpoll.**

(*Acanthis linaria rostrata*.)

Occurs in winter sparingly with the other Redpolls.

GENUS STRAGALINUS.

(529) **American Goldfinch.**

(*Astragalinus tristis*.)

A common resident in northern Ontario, more abundant in summer than in winter, a large number going south at the approach of cold weather.

GENUS SPINUS.

Pine Siskin. (Pine Finch.)

(*Spinus pinus*.)

Regular and sometimes an abundant winter visitor. Remains during the summer and breeds here. Nests found in many localities.

GENUS PASSERINA.

(534) **Snow Bunting.** (Snowbird.)

(*Passerina nivalis*.)

A common winter visitor. Arrives about the end of October, departs about the middle of March. Breeds in the Arctic regions.

GENUS CALCARIUS.

(536) **Longspur.**

(Calcarius lapponicus.)

An irregular winter visitor most frequently found in late autumn and early spring.

Breeds in the Arctic regions.

GENUS POECETES.

(540) **Vesper Sparrow.** (Baywing.)

(Poecetes gramineus.)

An abundant summer resident. Breeds throughout its range in the Province.

Arrives about the middle of April, departs early in October.

GENUS PASSERCULUS.

(542a) **Savanna Sparrow.**

(Passerculus sandwichensis savanna.)

A common summer resident, breeding throughout its range in the Province.

Arrives about the middle of April, departs early in October.

GENUS COTURNICULUS.

(*) (546) **Grasshopper Sparrow.**

(Coturniculus savannarum passerinus.)

A regular, but not a common summer visitor to south-western Ontario which has, on two occasions, been taken as far east as Toronto.

GENUS AMMODRAMUS.

(*) (547) **Henslow's Sparrow.**

(Ammodramus henslowii.)

This bird has been recorded by Mr. W. E. Saunders as a summer resident of south-western Ontario, and by Mr. Fleming as occurring and apparently breeding near Lake Joseph, Muskoka.

(*) (548) **Leconte's Sparrow.**

(Ammodramus leconteii.)

An accidental visitor from the western prairies.

Mr. J. H. Ames has a specimen which was taken at Toronto.

(549.1) **Nelson's Sparrow.**

(Ammodramus nelsoni.)

A regular, but not a common, visitor in autumn to the neighbourhood of Toronto. Rare in spring.

(*) (549.1a) **Acadian Sharp-tailed Finch.**

(Ammodramus nelsoni subvirgatus.)

An accidental visitor to the eastern part of the Province.

GENUS CHONDESTES.

(*) (552) Lark Sparrow.
(*Chondestes grammacus.*)

A regular, but not a common, summer resident of some localities in southern Ontario. I find a few pairs near Toronto every season.

Breeds where it occurs.

GENUS ZONOTRICHIA.

(554) White-crowned Sparrow
(*Zonotrichia leucophrys.*)

A common migrant, arriving about the tenth of May and soon passing northward, returning towards the end of September and departing southward late in October.

Breeds in the far north.



White-throated Sparrow.

(558) White-throated Sparrow. (Peabody.)
(*Zonotrichia albicollis.*)

Very abundant during the migrations and a regular, though not a common, summer resident in southern Ontario, where a few pairs always remain to breed.

Arrives about the end of April, departs southward early in October.

GENUS SPIZELLA.

(559) **Tree Sparrow.**

(Spizella monticola.)

A common winter visitor. Arrives early in October, departs late in April.

Breeds from our northern limit northwards.

(560) **Chipping Sparrow.** (Hairbird.)

(Spizella socialis.)

An abundant summer resident. Breeds throughout its range in the Province.

Arrives about the middle of April, departs in September.

(*) (561) **Clay-coloured Sparrow.**

(Spizella pallida.)

One specimen recorded by Mr. Saunders as having been taken by him near London. I found it abundant on the scrubby prairie of Manitoba, which is its proper habitat.

(563) **Field Sparrow.**

(Spizella pusilla.)

A common summer resident in suitable places in southern Ontario. Breeds throughout its range.

Arrives about the middle of April, departs early in October.

GENUS JUNCO.

(567) **Junco.**

(Junco hyemalis.)

A common resident. Breeds throughout its range in the Province, but is most abundant in the spring and late autumn migrations.

GENUS MELOSPIZA.

(581) **Song Sparrow.**

(Melospiza cinerea melodia.)

An abundant summer resident; breeds throughout its range in the Province.

Arrives about the middle of March, departs late in October.

Some few always remain through the winter in sheltered places along our southern border, but as at that season they are very quiet, they are not often observed.

(583) **Lincoln's Sparrow.**

(Melospiza lincolni.)

A regular, but never a common visitor; perhaps breeds here, but so far I have never found it between May and September. It frequently accompanies the White-crowned Sparrows.

(584) Swamp Sparrow.*(Melospiza georgiana.)*

A very abundant summer resident in marshes; breeds throughout its range in the Province.

Arrives about the middle of April, departs early in November.

GENUS PASSERELLA.

(585) Fox Sparrow.*(Passerella iliaca.)*

A very rapid migrant. Large numbers pass through southern Ontario about the middle of April, seldom resting here for more than a day or two. In the autumn a few are always to be found, but they are not common at that season. Breeds in the far north.

This is one of the most beautiful songsters that visit us.

GENUS PIPILO.

(587) Towhee.*(Pipilo erythrophthalmus.)*

An abundant summer resident in the woods of southern Ontario and one which is extending its range as the land is brought under cultivation. Breeds wherever it occurs.

Arrives about the end of April, departs early in October.

GENUS CARDINALIS.

(593) Cardinal.*(Cardinalis cardinalis.)*

A rare summer resident of the south-western counties. Stragglers have been taken at various places as far east as Toronto.

GENUS ZAMELODIA.

(595) Rose-breasted Grosbeak.*(Zamelodia ludoviciana.)*

A tolerably common summer resident. Breeds in the woods throughout its range in the Province.

Arrives about the middle of May, departs towards the end of August.

This is one of the few birds that will eat the Colorado Potato-beetle.

GENUS CYANOSPIZA.

(589) Indigo Bunting.*(Cyanospiza cyanea.)*

A common summer resident; breeding throughout its range in the Province.

Arrives early in May, departs about the end of August.

GENUS SPIZA.

- (*) (604) **Dickcissel.**
(*Spiza americana.*)

Mr. Saunders has recorded the occurrence of this bird in south-western Ontario as a summer resident, and I have heard of it at other points along our southern boundary.

FAMILY TANAGRIDÆ. (THE TANAGERS.)

Bill in our species stout, finch-like, considerably longer than broad, and more or less evidently toothed near the middle of upper mandible. Tarsus scutellate; legs short, claws long. Colours brilliant in the males.

GENUS PIRANGA.

- (608) **Scarlet Tanager.**
(*Piranga erythromelas.*)

Tolerably common summer resident; breeding throughout its range in the Province.

Arrives early in May; departs towards the end of August.

- (*) (610) **Summer Tanager.**
(*Piranga rubra.*)

A very rare visitor to the south-western part of the Province. Stragglers have been taken at various places as far east as Toronto.

FAMILY HIRUNDINIDÆ. (THE SWALLOWS.)

Bill short, broad, triangular, depressed, the gape wide and about twice as long as the culmen, reaching to about opposite the eyes, similar in its form to that of the Swifts and the Goatsuckers, with which birds, however, the Swallows have no affinity. Rictus without bristles; wings very long and pointed, secondaries very short. Tail more or less forked. Feet weak; tarsus scutellate. Plumage compact, and more or less lustrous.

All are remarkably strong on the wing, and while with us entirely insectivorous.

The economic importance of these birds is very great; without them the smaller winged insects would multiply to such an extent as to become an unbearable nuisance to men and animals; for it is, I believe, to these birds chiefly that we are indebted for our freedom, in the cleared and cultivated parts of the country, from the swarms of midges, black flies, and gnats of various kinds that so abound in the woods.

These birds seem to have a great predilection for the society of men, partly because the clearing he makes in a forest country opens up to them the necessary space for feeding grounds and partly because the

buildings he erects afford them convenient nesting-places, of which the House Sparrow unfortunately is dispossessing them.

GENUS PROGNE.

(611) **Purple Martin.**
(*Progne subis.*)

A common summer resident; breeding throughout its range in the Province.

Arrives about the fifteenth of April, departs early in September.

This is one of the birds which appears to be rapidly decreasing in southern Ontario and increasing northward and in Manitoba as the land is settled.

GENUS PETROCHELIDON.

(612) **Cliff Swallow.**
(*Petrochelidon lunifrons.*)

A regular summer resident, somewhat irregularly distributed, being abundant at some points and absent from others.

Breeds in colonies under the eaves of barns, etc., throughout its range in the Province.

Arrives early in May, departs in August.

GENUS HIRUNDO.

(613) **Barn Swallow.**
(*Hirundo erythrogaster.*)

A common summer resident, breeding in barns and outhouses throughout its range in the Province.

Arrives about the end of April, departs early in September.

GENUS IRIDOPROCNE.

(614) **White-breasted Swallow.** (Tree Swallow.)
(*Iridoprocne bicolor.*)

A common summer resident, breeding in holes in the side of buildings, nest boxes, etc., throughout its range in the Province.

Arrives quite early in April, departs about the end of September.

GENUS RIPARIA.

(616) **Bank Swallow.** (Sand Martin.)
(*Riparia riparia.*)

An abundant summer resident, breeding in colonies in holes in sand-banks, throughout its range in the Province.

Arrives about the beginning of May, departs about the middle of September.

GENUS STELGIDOPTERYX.

- (*) (617) **Rough-winged Swallow.**
(*Stelgidopteryx serripennis.*)

A rare summer resident of our southern border, where it has been found as far east as Toronto.

FAMILY AMPELIDÆ. (THE WAXWINGS.)

Bill stout, triangular, depressed, decidedly notched and hooked, with the gape very wide. Tarsus short, with the lateral plates more or less subdivided.

Our species are both crested birds with soft plumage of a beautiful cinnamon drab colour; sometimes the ends of the secondaries and of the tail feathers, also, are tipped with horny appendages, looking like red sealing wax. These appendages are no indication of age or sex.

They feed on insects and soft fruits.

SUBFAMILY AMPHELINÆ. (WAXWINGS.)

GENUS AMPELIS.

- (618) **Bohemian Waxwing.**
(*Ampelis garrulus.*)

An irregular winter visitor, never abundant. Breeds in the north-west.

- (619) **Cedar Waxwing.** (Cherry Bird.)
(*Ampelis cedrorum.*)

A resident species, common and generally distributed in summer; irregular in winter, its movements at that season probably depending upon the food supply.

Breeds throughout its range in the Province.

FAMILY LANIIDÆ. (THE SHRIKES.)

Bill hawklike, very strong, the upper mandible toothed and abruptly hooked at the tip; both mandibles distinctly notched. Wings short, rounded. Tail long. Tarsus scutellate on the outside as well as in front.

Their habits corresponding with the form of the bill, are similar to those of birds of prey. They have a remarkable habit of impaling small animals on thorns and leaving them there.

GENUS LANIUS.

(621) Northern Shrike.
(*Lanius borealis*.)

A regular, but not abundant, winter visitor. The bulk of them breed in the north, but nests have been found at various places in southern Ontario.

Arrives in October, departs in April.



Migrant Shrike.

(622e) Migrant Shrike.
(*Lanius ludovicianus migrans*.)

A regular but not abundant summer resident. Breeds throughout its range in the Province.

Arrives early in April, departs about the end of August.

FAMILY VIREONIDÆ. (VIREOS.)

Bill shorter than head, stout, compressed, decidedly notched and hooked. Rictus with bristles. Nostrils exposed, overhung by a scale, reached by the bristly frontal feathers. Tarsus scutellate; toes joined at base for the whole length of basal joint of middle one, which is united with the basal joint of the inner and the two basal joints of the outer. All are insectivorous.

GENUS VIREO.

(624) Red-eyed Vireo.
(*Vireo olivaceus*.)

A common summer resident in woods and orchards. Breeds throughout its range in the Province.

Arrives early in May; departs towards the end of September.

(626) Philadelphia Vireo.*(Vireo philadelphicus.)*

Tolerably common summer resident; breeds throughout its range in the Province.

Arrives about the middle of May, departs at the end of September.

(627) Warbling Vireo.*(Vireo gilvus.)*

Common summer resident; breeds throughout its range in the Province.

Arrives about the middle of May; departs in September.

This species seems to prefer shrubberies and shade trees in city streets to the seclusion of the woods.

(628) Yellow-throated Vireo.*(Vireo flavifrons.)*

An uncommon summer visitor which probably breeds with us, though I have no actual record of the discovery of its nest here.

Arrives about the beginning of May, departs early in September.

(629) Blue-headed Vireo. (Solitary Vireo.)*(Vireo solitarius.)*

A regular migrant in spring and autumn. Probably breeds in the interior.

Arrives early in May, departs at the end of September.

(*) (631) White-eyed Vireo.*(Vireo noveboracensis.)*

Mr. W. L. Kells has recorded the capture of one specimen near Listowel, in the middle of October, 1890, and Mr. Hobson has taken another near Woodstock. I have heard of no others.

FAMILY MNIOTILTIDÆ. (WOOD WARBLERS.)

Bill usually rather slender, notched or not; the commissure not angulated at base as in *Fringillidæ*, nor toothed in the middle; the end not notched and abruptly hooked, as in *Vireonidæ*; the gape not broad and reaching to the eyes, as in *Hirundinidæ*. The Warblers are all small birds, usually of brilliant colouration, but the sexes are unlike and the variations due to age and season are great, so that the identification of immature birds is sometimes troublesome.

All are insectivorous and of great value to the horticulturist, as they glean their insect food chiefly from the foliage and twigs of trees.

GENUS MNIOFILTA.

(636) **Black and White Warbler.**
(*Mniotilta varia*.)

A very common summer resident, breeding throughout its range in the Province.

Arrives about the first of May, departs early in September.

GENUS PROTONOTARIA.

(*) (637) **Prothonotary Warbler.**
(*Protonotaria citrea*.)

Mr. McIlwraith has recorded the capture of one specimen near Hamilton in May, 1888, which is all I have heard of.

GENUS HELMINTHOPHILA.

(*) (642) **Golden-winged Warbler.**
(*Helminthophila chrysoptera*.)

A rare summer visitor recorded from several places in the southern and western counties and Mr. Kells reports having found it breeding near Listowel.

(645) **Nashville Warbler.**
(*Helminthophila rubricapilla*.)

A common migrant. Breeds sparingly in southern Ontario and no doubt regularly in the interior.

Arrives early in May, departs early in October.

(*) (646) **Orange-crowned Warbler.**
(*Helminthophila celata*.)

A rare summer visitor.

(647) **Tennessee Warbler.**
(*Helminthophila peregrina*.)

A regular, but not a very common, visitor in spring. I have not found it at any other season.

Arrives about the middle of May.

GENUS COMSOTILYPIS.

(648) **Parula Warbler.**
(*Comsotilypis americana usneæ*.)

A common spring and summer migrant. Probably breeds in the interior.

Arrives about the fifteenth of May, departs towards the end of September.

GENUS DENDROICA.

(650) Cape May Warbler.
(*Dendroica tigrina*.)

A rare summer visitor; most frequently seen in the spring. About three years ago I met with rather a large flock of them in the autumn migration, the only time I have seen them at that season. Probably breeds in the interior, as nests have been found in New Brunswick and in Maine.



Yellow Warbler.

(652) Yellow Warbler
(*Dendroica aestiva*.)

A very abundant summer resident. Breeds throughout its range in the Province.

Arrives early in May, departs about the end of August.

(654) Black-throated Blue Warbler.
(*Dendroica caerulescens*.)

Common in the migrations in southern Ontario, breeding sparingly in the south and more commonly in the interior.

Arrives early in May; departs at the end of September.

(655) **Myrtle Warbler.** (Yellow-rumped Warbler.)
(*Dendroica coronata.*)

An abundant migrant in the south. Breeds in the interior.
Arrives towards the end of April; departs about the end of the first week in October.

(657) **Magnolia Warbler.**
(*Dendroica maculosa.*)

An abundant migrant. Breeds from central Ontario northward.
Arrives early in May; departs about the end of September.

(* (658) **Cerulean Warbler.**
(*Dendroica cerulea.*)

A regular, but rare, summer resident, most frequently seen in the south-western counties. Breeds throughout its range in the Province.

(659) **Chestnut-sided Warbler.**
(*Dendroica pennsylvanica.*)

A common summer resident. Breeds throughout its range in the Province.

Arrives early in May; departs early in September.

(660) **Bay-breasted Warbler.**
(*Dendroica castanea.*)

A regular, but never a common, migrant in spring. Breeds in the interior.

I have but seldom met with this species in the autumn.

Arrives early in May; departs at the end of September.

(661) **Black-poll Warbler.**
(*Dendroica striata.*)

A regular, but not generally a common, migrant in spring and autumn. Breeds in the north, probably from our boundary to the tree limit.

Arrives about the twentieth of May; departs at the end of September

(662) **Blackburnian Warbler.**
(*Dendroica blackburniæ.*)

A tolerably common spring and autumn migrant in southern Ontario. Probably breeds in the interior, as it has often been observed during the summer months in central Ontario.

Arrives early in May; departs at the end of September.

(667) **Black-throated Green Warbler.**
(*Dendroica virens.*)

A common summer resident, breeding throughout its range in the Province.

Arrives early in May; departs early in October.

(*) (670) **Kirtland's Warbler.**
(*Dendroica kirtlandi*.)

On the 16th of May, 1900, Mr. J. H. Samuel took a bird of this species near Toronto, the only one I have heard of so far. It may yet be found breeding in the interior of the Province, as it does so regularly in Michigan. It is, however, a very rare species everywhere.

(671) **Pine Warbler.**
(*Dendroica vigorsii*.)

An irregular summer resident, sometimes common and in other seasons scarce.

Breeds throughout its range in the Province.

Arrives towards the end of April; departs in September.

(672) **Palm Warbler.**
(*Dendroica palmarum*.)

A tolerably common migrant in spring and autumn. Probably breeds in the northern part of the Province.

Arrives early in May; departs about the first of October.

Our form may be referable to *D. p. hypochrysea*. Specimens taken by me vary very much in the brilliancy of the yellow coloring.

(*) (673) **Prairie Warbler.**
(*Dendroica discolor*.)

A very rare visitor, two specimens of which were taken near Toronto in May, 1900, one each by Messrs. Samuel and Ames. Since then it has been found in south-western Ontario by Mr. Klugh.

GENUS SEIURUS.

(674) **Oven Bird.** (Golden-crowned Thrush.)
(*Seiurus aurocapillus*.)

An abundant summer resident in woods. Breeds throughout its range in the Province.

Arrives early in May; departs about the first of September.

(675) **Water Thrush.**
(*Seiurus noveboracensis*.)

A common summer resident. Breeds in the interior of the Province. Arrives early in May; departs early in September.

(676) **Louisiana Water Thrush.**
(*Seiurus motacilla*.)

A rare summer visitor along our southern border as far east as Toronto.

GENUS GEOTHLYPIS.

(*) (677) **Kentucky Warbler.**
(*Geothlypis formosa.*)

An accidental visitor. One specimen taken by Mr. Robert Elliott near Bryanston, Middlesex, in May, 1898.

(678) **Connecticut Warbler.**
(*Geothlypis agilis.*)

A rare summer resident. Mr. W. L. Kells records having found nests near Listowel, and I have seen and watched the birds here in summer, but failed to discover their nesting place.

Arrives about the twentieth of May; departs at the end of August.

(679) **Mourning Warbler.**
(*Geothlypis philadelphia.*)

A rather rare summer resident. Breeds throughout its range in the Province.

Arrives about the twentieth of May; departs at the end of August.

(681) **Maryland Warbler.**
(*Geothlypis trichas.*)

A common summer resident. Breeds throughout its range in the Province.

Arrives about the tenth of May; departs at the end of September.

Our form may be referable to *G. t. brachydactyla.*

GENUS ICTERIA.

(*) (683) **Yellow-breasted Chat.**
(*Icteria virens.*)

A very rare summer resident of the south-western part of the Province.

GENUS WILSONIA.

(*) (684) **Hooded Warbler.**
(*Wilsonia mitrata.*)

A very rare summer visitor to our southern border.

(685) **Wilson's Warbler.**
(*Wilsonia pusilla.*)

A regular migrant in spring and autumn, sometimes occurring in considerable numbers. Breeds in the interior.

Arrives about the twentieth of May; departs early in September.

(686) **Canadian Warbler.**
(*Wilsonia canadensis*.)

Common summer resident, breeds throughout its range in the Province.

Arrives early in May, departs at the end of August.

GENUS SETOPHAGA.

(687) **American Redstart.**
(*Setophaga ruticilla*.)

A common summer resident, breeding throughout its range in the Province.

Arrives about the tenth of May; departs early in September.

FAMILY MOTACILLIDÆ. (PIPITS, ETC.)

Bill shorter than the head, very slender, straight, acute, notched at tip. Feet large, fitted for walking; hind claw long, little curved, as in the larks; inner toe cleft; basal joint of outer toe united with middle one; tarsus as in Oscines generally, ending in a sharp undivided ridge behind. Rictal bristles not conspicuous; nostrils exposed.

GENUS ANTHUS.

(697) **American Pipit.**
(*Anthus pennsylvanicus*.)

An abundant migrant, more frequently seen in autumn than in spring.

Breeds in the Arctic regions.

Arrives about the tenth of May and passes on northward very quickly. Early in September they return and remain until about the end of the first week in November.

FAMILY TROGLODYTIDÆ. (WRENS, THRASHERS, ETC.)

Bill usually more or less slender, with or without a notch near the tip. Nostrils not covered by bristles. Tarsus scutellate, the plates usually distinct.

All are chiefly insectivorous, the Catbird being the only one which feeds upon cultivated fruit.

FAMILY MIMIDÆ. (THRASHERS, ETC.)

GENUS MIMUS.

(*) (703) **Mocking-bird.**
(*Mimus polyglottos*.)

I include this species on the authority of Mr. McIlwraith, who has recorded the occurrence of two specimens in southern Ontario.

GENUS GALEOSOPTES.

(704) **Catbird.**

(Galeoscoptes carolinensis.)

A very common summer resident; breeds throughout its range in the Province.

Arrives at the end of April, departs early in October.

GENUS TOXOSTOMA.

(705) **Brown Thrasher.** (Brown Thrush.)

(Toxostoma rufum.)

A common summer resident; breeds throughout its range in the Province.

Arrives at the end of April; departs early in October.

SUBFAMILY TROGLODYTINÆ. (WRENS.)

GENUS THRYOTHORUS.

(*) (718) **Carolina Wren.**

(Thryothorus ludovicianus.)

Mr. McIlwraith has recorded the capture of a specimen at Mount Forest, and recently Mr. Klugh found a pair breeding here.

GENUS THRYOMANES.

(*) (719) **Bewick's Wren.**

(Thryomanes bewickii.)

Mr. W. E. Saunders records having taken one specimen on the thirteenth December, 1898, near Appin, Ontario.

GENUS TROGLODYTES.

(721) **House Wren.**

(Troglodytes ædon.)

A common summer resident, nesting about houses and farm buildings throughout its range in the Province.

Arrives about the first of May; departs early in October.

GENUS OLBIORCHILUS.

(722) **Winter Wren.**

(Olbiorchilus hiemalis.)

A summer resident. Breeds throughout its range in the Province; commonly in the interior and northward.

GENUS CISTOTHORUS.

(*) (724) **Short-billed Marsh Wren.**
(*Cistothorus stellaris*.)

A regular summer resident of the south-western part of the Province, but never abundant. Very rare elsewhere. I have taken two at Toronto and have since found a pair breeding there.

Breeds wherever found.

GENUS TELMATODYTES.

(725) **Long-billed Marsh Wren.**
(*Telmatodytes palustris*.)

A very abundant summer resident in marshes. Breeds throughout its range in the Province.

Arrives at the beginning of May; departs about the middle of October.

FAMILY CERTHIIDÆ. (CREEPERS.)

Bill slender, decurved as long as head, without notch or bristles. Tarsus scutellate. Claws all very long, curved and compressed. Tail feathers pointed, with stiffened shafts, somewhat like the tail of a Woodpecker and similarly used for support.

Our only representative is a curious small bird which creeps about the trunks and larger branches of trees searching for insects hidden in the crevices of the bark.

GENUS CERTHIA.

(: 26) **Brown Creeper.**
(*Certhia familiaris americana*.)

A common resident, most abundant in southern Ontario during the migrations.

Breeds occasionally in the southern portion of the Province and regularly in the interior and northward.

FAMILY PARIDÆ. (TITS.)

Bill not notched nor decurved; loreal feathers bristly; nostrils concealed by dense tufts. Tarsus scutellate; plumage more or less lax, subject to few variations.

All are insectivorous, gleaning their food from the trunks and twigs of trees. They are invaluable guardians of the orchard and forest.

FAMILY SITTIDÆ. (NUTHATCHES.)

GENUS SITTA.

(727) **White-breasted Nuthatch.**
(*Sitta carolinensis.*)

A common resident. Breeds throughout its range in the Province, wherever there is heavy timber.

(728) **Red-breasted Nuthatch.**
(*Sitta canadensis.*)

A resident species, but most frequently observed during the migrations. In winter it is fairly common.

I once found a pair evidently breeding near Toronto, and it regularly breeds in the interior and northward.

SUBFAMILY PARINÆ. (TITMICE.)

GENUS PARUS.

(735) **Chickadee.**
(*Parus atricapillus.*)

A very common resident and one of the most useful birds of the orchard.

Breeds throughout its range in the Province.

(*) (740) **Hudsonian Chickadee.**
(*Parus hudsonicus.*)

In southern Ontario this is only a very rare straggler from the north. As might be expected, it is more frequently seen in the Ottawa district than elsewhere.

Mr. Kay reports having seen a pair near Port Sydney, Muskoka, in November, 1892.

FAMILY SYLVIIDÆ. (KINGLETS, GNATCATCHERS, ETC.)

Bill slender, depressed at base, notched and decurved at tip. Rictus with bristles; nostrils oval. Tarsus usually booted, scutellate in *Poliop-tilla*. Basal joint of middle toe attached its whole length externally, half way internally.

SUBFAMILY REGULINÆ. (KINGLETS.)

GENUS REGULUS.

(748) **Golden-crowned Kinglet.**
(*Regulus satrapa.*)

An abundant migrant and common winter resident.

Probably breeds in our northern forests, as it does in Massachusetts

(749) **Ruby-crowned Kinglet.**
(*Regulus calendula.*)

Common during the spring and autumn migrations.

Probably breeds in the interior, as it is known to do so in Nova Scotia.

I have never found this species here in winter.

SUBFAMILY POLIOPTILINÆ. (GNATCATCHERS.)

GENUS POLIOPTILA.

(751) **Blue-gray Gnatcatcher.**
(*Polioptila cærulea.*)

A rare summer resident of the south-western counties, which occasionally strays as far east as Toronto.

Breeds where it occurs.

FAMILY TURDIDÆ. (THRUSHES, BLUEBIRDS, ETC.)

Bill generally rather long, not conical, usually with a slight notch near the tip; nostrils oval, not concealed, but nearly or quite reached by the bristly frontal feathers; rictus with bristles, which are well developed in most of our species; tarsus always booted, *i.e.*, enveloped in a continuous plate, formed by the fusion of all the scutella; except two or three of the lowest. Toes deeply cleft, the inner one free, the outer united to the middle one, not more than half the length of the first basal joint.

Their food consists of insects and small fruit, chiefly wild berries growing in the woods.

SUBFAMILY TURDINÆ. (THRUSHES.)

GENUS HYLOCICHLA.

(755) **Wood Thrush.**
(*Hylocichla mustelina.*)

Fairly well distributed throughout southern Ontario, but nowhere abundant.

Breeds wherever it occurs.

Arrives early in May, departs about the middle of September.

(756) **Wilson's Thrush.**
(*Hylocichla fuscescens.*)

An abundant summer resident in woodlands, breeds throughout its range in the Province.

Arrives early in May; departs at the end of August.

Mr. W. E. Saunders records the capture of a specimen of *H. f. salicola* at Ottawa in September, 1898.

(757) **Gray-cheeked Thrush.**
(*Hylocichla aliciae*.)

A common migrant in spring and autumn, breeds far north.
Arrives about the middle of May, departs early in October.

Mr. Saunders states that a specimen of *H. a. bicknelli* was taken by Mr. Robert Elliott near Bryanston, Ont., September 19th, 1898.

(758a) **Olive-backed Thrush.**
(*Hylocichla ustulata swainsonii*.)

A common migrant in spring and autumn. Breeds far north.

Arrives about the middle of April and soon goes on, returning in September and departing early in October.

(759b) **Hermit Thrush.**
(*Hylocichla guttata pallasii*.)

A common migrant in spring and autumn in southern Ontario, and a summer resident, breeding in the woods of the interior.



Robin.

GENUS MERULA.

(761) **American Robin.**
(*Merula migratoria*.)

An abundant summer resident, breeding throughout its range in the Province.

6 B.

Arrives early in March, the bulk usually depart early in November, but some small flocks remain where food is plentiful until severe frost comes, and a few always remain in sheltered gardens all the winter.

GENUS SAXICOLA.

(*) (765) **Wheatear.**
(*Saxicola œnanthe.*)

A specimen of the subspecies, *S. œ. leucorhoæ*, was taken by Mr. Tavernier at Beaumaris, Muskoka, in September, 1896, having wandered out of its range.

GENUS SIALIA.

(766) **Bluebird.**
(*Sialia sialis.*)

A common summer resident, breeding throughout its range in the Province.

Arrives about the middle of March, departs towards the end of October.

