

Technical and Bibliographic Notes/Notes techniques et bibliographiques

The Institute has attempted to obtain the best original copy available for filming. Features of this copy which may be bibliographically unique, which may alter any of the images in the reproduction, or which may significantly change the usual method of filming, are checked below.

L'Institut a microfilmé le meilleur exemplaire qu'il lui a été possible de se procurer. Les détails de cet exemplaire qui sont peut-être uniques du point de vue bibliographique, qui peuvent modifier une image reproduite, ou qui peuvent exiger une modification dans la méthode normale de filmage sont indiqués ci-dessous.

- Coloured covers/
Couverture de couleur
- Covers damaged/
Couverture endommagée
- Covers restored and/or laminated/
Couverture restaurée et/ou pelliculée
- Cover title missing/
Le titre de couverture manque
- Coloured maps/
Cartes géographiques en couleur
- Coloured ink (i.e. other than blue or black)/
Encre de couleur (i.e. autre que bleue ou noire)
- Coloured plates and/or illustrations/
Planches et/ou illustrations en couleur
- Bound with other material/
Relié avec d'autres documents
- Tight binding may cause shadows or distortion along interior margin/
La reliure serrée peut causer de l'ombre ou de la distortion le long de la marge intérieure
- Blank leaves added during restoration may appear within the text. Whenever possible, these have been omitted from filming/
Il se peut que certaines pages blanches ajoutées lors d'une restauration apparaissent dans le texte, mais, lorsque cela était possible, ces pages n'ont pas été filmées.
- Additional comments:/
Commentaires supplémentaires

- Coloured pages/
Pages de couleur
- Pages damaged/
Pages endommagées
- Pages restored and/or laminated/
Pages restaurées et/ou pelliculées
- Pages discoloured, stained or foxed/
Pages décolorées, tachetées ou piquées
- Pages detached/
Pages détachées
- Showthrough/
Transparence
- Quality of print varies/
Qualité inégale de l'impression
- Includes supplementary material/
Comprend du matériel supplémentaire
- Only edition available/
Seule édition disponible
- Pages wholly or partially obscured by errata slips, tissues, etc., have been refilmed to ensure the best possible image/
Les pages totalement ou partiellement obscurcies par un feuillet d'errata, une pelure, etc., ont été filmées à nouveau de façon à obtenir la meilleure image possible

This item is filmed at the reduction ratio checked below/
Ce document est filmé au taux de réduction indiqué ci-dessous.

10X	14X	18X	22X	26X	30X
<input type="checkbox"/>	<input type="checkbox"/>	<input type="checkbox"/>	<input checked="" type="checkbox"/>	<input type="checkbox"/>	<input type="checkbox"/>
12X	16X	20X	24X	28X	32X

2

3

4

5

6

7

8

Indian Names

AND

HISTORY

OF THE

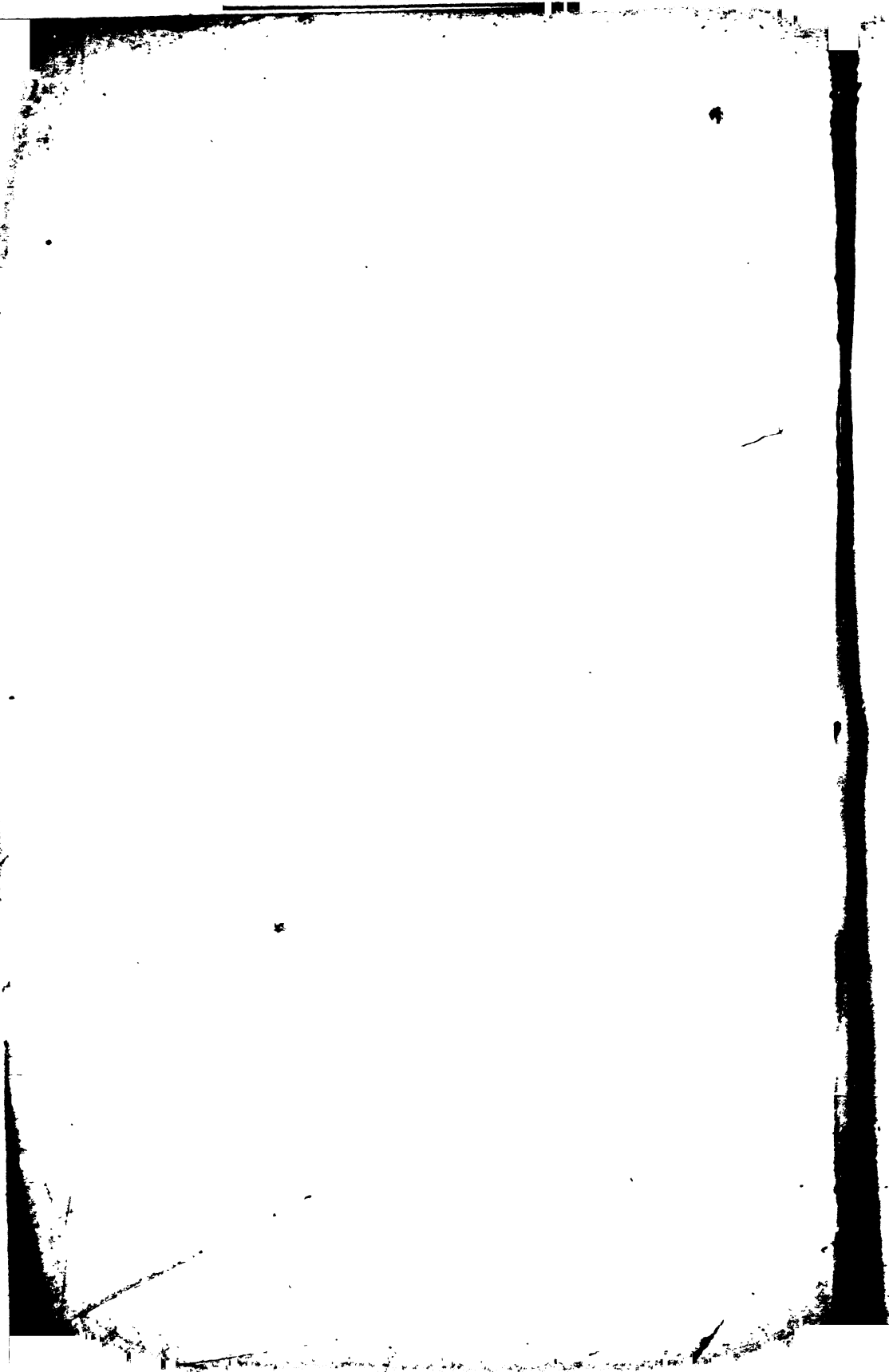
Sault Ste. Marie

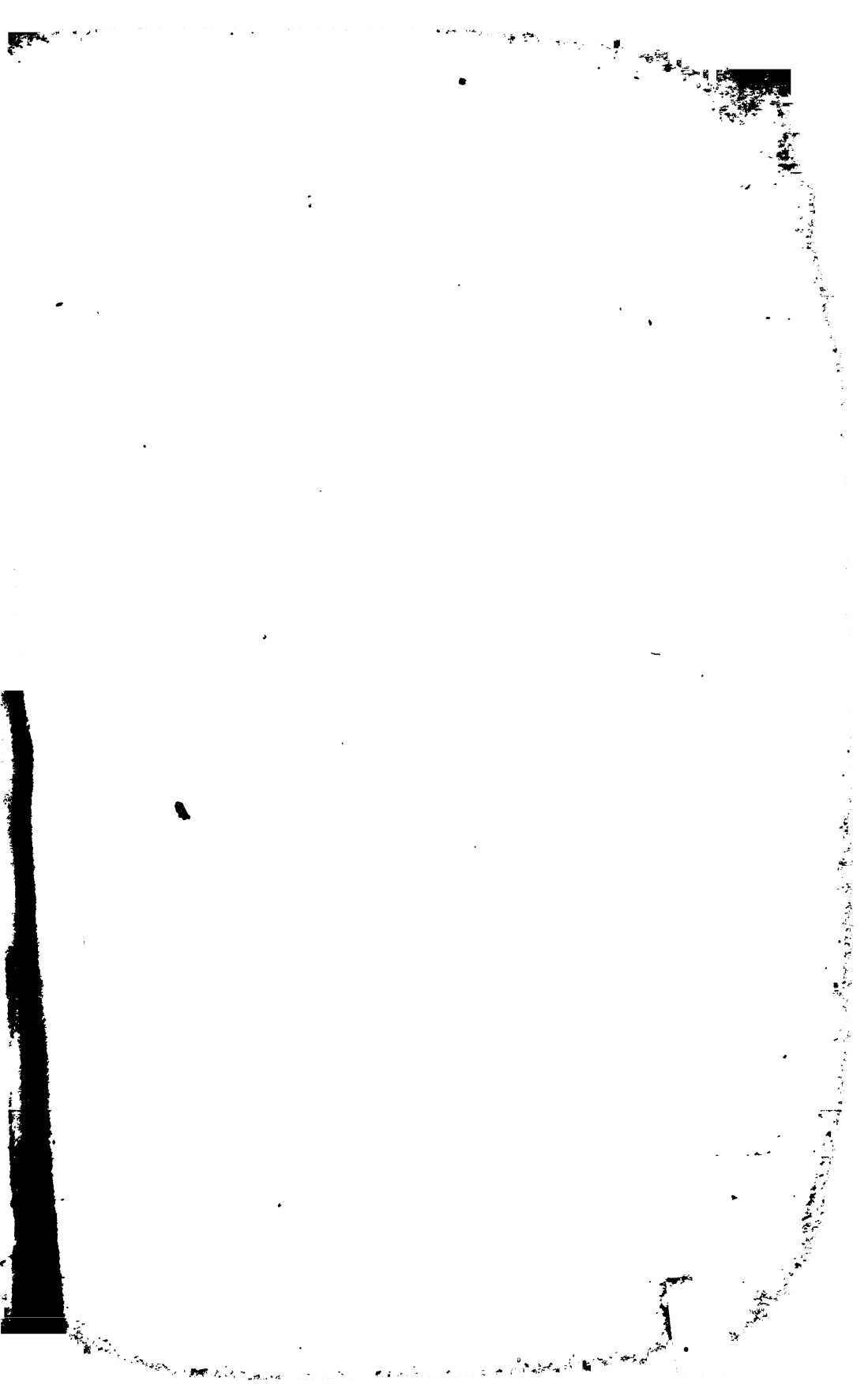
CANAL.

BY

DWIGHT H. KELTON,

CAPTAIN U. S. ARMY.







LOCK OF 1881 — LOWER GATES OPEN



LOCK OF 1881 — LOWER GATES CLOSED.

Indian Names

AND

HISTORY

OF THE

Sault Ste. Marie Canal

BY

DWIGHT H. KELTON, A. M.,
CAPTAIN U. S. ARMY.

AUTHOR OF ANNALS OF FORT MACKINAC. INDIAN NAMES OF PLACES NEAR THE
GREAT LAKES

CORRESPONDING MEMBER OF THE WISCONSIN STATE HISTORICAL SOCIETY.
CORRESPONDING MEMBER OF THE CHICAGO HISTORICAL SOCIETY,
MEMBER OF THE AMERICAN HISTORICAL ASSOCIATION,
MEMBER OF THE AMERICAN FOLK-LORE SOCIETY.

DETROIT, MICH.

1889.

Entered according to Act of Congress, in the year 1880, by

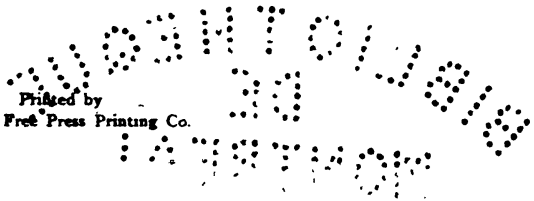
DWIGHT H. KELTON,

in the office of the Librarian of Congress, at Washington.

187645

ALL RIGHTS RESERVED.

Printed by
Detroit Free Press Printing Co.



SAULT STE. MARIE, MICHIGAN.

Latitude 46° 30' 10" North.

Longitude 84° 22' West of Greenwich.

HISTORICAL SKETCH.

Father Dablon named the mission established by him at the foot of the rapids in 1668, *Sainte Marie du Sault*, "Saint Mary's of the Rapids." *Saut*, is the modern spelling; "*Soo*," the popular pronunciation.

From the word *Saut*, "falls," or "rapids," the Ojibwa tribe obtained its French name, *Sauteux*. At first, those only whose home was at the "*Soo*" were called by that name; but by degrees it passed to all Indians of the same speech. The spelling "*Sauteur*," though very common, is wrong; this word is pronounced differently and denotes "a springer," or "a jumper."

The Indian name of the town or rapids is *Bawiting*, from *bawitig*, "rapids." This is an abbreviation of *bawitigoweya*, "the river is beaten into spray." (Some Indians pronounce it *bagwiting*, "where the river is shallow.")

The Ojibwa band residing at the *Saut* were called *Bawitigowiniwag*, or *Bawiting-dázh-ininiwag*, "Men of the Rapids."

The Indians have no general name for St. Mary's River; but have for the lakes into which it expands. The mouth of the river is called *Giwidoomaning*, "where they sail around a point."

Pawtucket, *Powatan*, *Pawcatuck*, *Pawtuzet* (Ojibwa *Bawitigosing*, "at the little falls"), and many other similar names in different dialects, are of the same root as *bawitig*, and denote a fall or rapids. The root is *baw*, "to scatter by striking."

Lake Superior is 602 feet above the level of the sea.

The only water-way between Lake Superior and the lower lakes is the Saint Mary's River, which flows from Lake Superior at its eastern extremity, and empties into Lake Huron 37 miles east of Mackinac Island. The channel between the two lakes is about 75 miles long, and was, before improvement, obstructed in many places, but especially at the Rapids of Saint Mary, 15 miles from the head of the river. In their natural state these rapids formed a barrier to transportation by water, and made a portage necessary.

The fall of the river from Lake Superior to the rapids of St. Mary is one tenth of a foot; in the half-mile stretch of these rapids the fall is 18 feet; and from the foot of the rapids to the Lake Huron level, which is reached at Mud Lake, 35 miles below, the fall is 2.3 feet.

In 1837, the governor of the newly admitted State of Michigan called the attention of the State legislature to the advisability of constructing a canal around the rapids at Sault Ste. Marie, and three years later the subject was brought up in the United States Senate. In spite of violent opposition a survey was ordered, which was made by officers of the Topographical Engineers, U. S. Army. In 1852, a grant of 750,000 acres of public land was made to the State of Michigan, from the proceeds of which the canal was to be built.

The grant was attended with the conditions that the canal be at least 100 feet wide and 12 feet deep; the locks at least 250 feet long and 60 feet wide; that work be begun within three years and finished within ten; that tolls be limited to the amount necessary to keep the canal in repair, after the expenses of construction had been paid; that Government vessels be free of tolls; and that the donated land should not be sold until the location had been established and filed.

The State accepted the conditions and the grant, and handed the latter over to a private company, which undertook to build the canal for the proceeds of the land.

OLD CANAL AND LOCKS.

(1855.)

Ground was broken for the work on June 4, 1853. The certificate of its completion was signed by the commissioners on May 21, 1855. The first boat, the steamer Illinois, Captain Jack Wilson, was locked through on June 18, 1855.

The canal was 5,400 feet long, 100 feet wide, and 12 feet deep at an average stage of water. The banks had a slope of 1 vertical to 2 horizontal, and were revetted with stone except in rock cuttings.


The locks were at the eastern or lower end, and were two in number, placed one in immediate prolongation of the other. Each lock was rectangular in plan, 350 feet long by 70 feet wide and 24 feet 8 inches deep, with a depth of $11\frac{1}{2}$ feet of water over the miter-sills, and a lift of 9 feet. The capacity of each lock was 281,750 cubic feet.

The walls were of cut limestone from Marblehead, Ohio, and Malden, Ontario, backed with stone from Drummond's Island, Saint Mary's River.

Water was admitted to the locks through openings in the leaves of the upper gates, by means of butterfly valves. The valves were worked with a rack and pinion. Seven minutes were required to fill the upper lock-chamber, and fourteen to fill the lower. The volume of water in the upper lock when filled to the level of the canal above, amounted to 3,757,000 gallons. The water was let out of the locks by means of valves in the lower lock-gates. Fourteen minutes were required to empty each lock-chamber. Five minutes were required to open or close the lock-gates. The gates were operated by means of a boom, worked by a hand-capstan.

The dimensions of the locks permitted the passage at one time of a tug and three vessels of the size then usual.

There was a guard-gate of the ordinary mitering pattern 2,100 feet above the upper lock-gates.



The original survey was made by Capt. Augustus Canfield, Topographical Engineers, U. S. A.

The entire cost of the canal was \$999,802.46.

The last boat, the steam tug Annie Clark, Captain Edward Martin, was locked through Nov. 2, 1886.

CANAL IMPROVEMENTS AND NEW LOCK.

(1881.)

The first contract for the improvement of the canal, which resulted in its enlargement and the building of the lock of 1881, was dated October 20, 1870; the first stone of the lock (the largest ship canal lock in the world) was laid July 25, 1876, and the first boat, the steamer City of Cleveland (now City of Alpena), Captain Albert Stewart, locked through on September 1, 1881.

The length of the canal is 7,000 feet. Its width is variable. The least width is 108 feet, at the movable dam. The depth of water is 16 feet. Vessels are protected against injury from the rocky sides of the canal by a revetment of pier work, the general height of which is 4 feet above mean water level. The material is pine timber 1 foot square. There are 12,000 linear feet of wooden piers, and 3,100 linear feet of masonry connected with the canal.

LOCK.

The chamber of the lock is 515 feet long between the gates, 80 feet wide, narrowed to 60 feet at the gates; the depth is 39½ feet. Its capacity is 1,500,000 cubic feet. The depth of the water on the miter-sills is 17 feet; the lift of the lock is 18 feet. The volume of water in the lock chamber when filled to the level of the canal above, amounts to 9,888,000 gallons. The

sills are placed 1 foot below canal bottom, so as to be protected from injury by vessels. A guard gate is placed at each end of the chamber, making the length of the walls 717 feet.

The walls are of limestone. The cut stone was obtained from Marblehead, Ohio, and Kelley's Island, Lake Erie.

There are 34,207 cubic yards of masonry, in the construction of which 35,000 barrels of cement were used, every barrel of which was tested before it was taken on the wall.

The face stone, the miter and breast walls, and portions of the wall adjacent to springs of water, are laid in English Portland cement; the remainder of the wall is laid in American cement. The cements were mixed with sand in the proportion of 1 to 1.

The foundation is on rock throughout, a Potsdam sandstone of different degrees of hardness. A floor of timber and concrete extends across the bottom of the lock and 5 feet under each wall; the rest of the foundation of the wall is concrete $\frac{1}{2}$ to 2 feet thick on the rock. All the timbers used in the foundation are of pine 1 foot square. They are laid in concrete and fastened to the rock with bolts 3 feet long, which are fox wedged and cemented in the rock.

The miter-sills are oak timbers 12 by 18 inches, and fastened in place by bolts 10 feet long, fox-wedged and concreted in the rock, and also by timber braces bolted to the rock.

The estimated capacity of the lock is 96 vessels in twenty-four hours. At the close of the season of 1887, the greatest number of vessels ever through the canal in one day, was on June 14, 1887, when 84 vessels were locked through.

The original plans and specifications for this lock were prepared under direction of Gen. Orlando M. Poe, U. S. A. Later, they were somewhat modified under direction of Gen. Godfrey Weitzel, U. S. A. Mr. Alfred Noble, was the Assistant Engineer in local charge of the work from beginning to end.

The total cost of the canal enlargement was \$2,150,000.

GATES.

Two minutes are required to open or close the lock-gates.

There are four gates, designated as upper and lower lock-gates and upper and lower guard-gates. The frame work is of white oak and sheathing of Norway pine. The weight of one leaf of the upper lock-gate is 40 tons and of one leaf of the lower lock-gate 76 tons.

The guard-gates are only used when repairs are being made to the lock. They are opened and closed by means of temporary block and tackle operated by a power capstan. Both leaves of the upper guard-gate are provided with valves, with which to fill the lock after it has been pumped out. The valves are worked with a hand wrench from the top of the leaf. The lock can be filled through these valves in about one hour.

FILLING.

Eleven minutes are required to fill the lock.

The water is let into the locks from two culverts under the floor. These culverts are each 8 feet square, and extend from the well above the upper lock-gate to the well above the lower lock-gate. The water is admitted into the culverts through a well which is covered with a grating.

The covering of the culverts is the floor of the lock. The water passes into the lock chamber through 58 apertures in the lock floor. Each aperture has an area of 3 square feet; the 58 apertures 174 square feet. This area is increased to 190 square feet by the man-holes left in the bulkhead at the lower end of the culverts.

The filling valves through which the water enters the culverts are two in number, and are located in the well just above the upper lock-gate. Each valve, when shut, closes the entrance to one of the culverts. Each valve is 10 feet wide and 8 feet deep. The valves are made with horizontal cast-iron axles, and frames, to which a covering of boiler iron is bolted.

EMPTYING.

Eight minutes are required to empty the lock.

The water in passing out of the lock goes down through a well which is covered with a grating, thence through two short culverts and up through a well below the lower lock-gates.

The emptying valves, through which the water escapes from the lock, are two in number and are located in the well just above the lower lock-gate. Their construction is similar to that of the filling valves, just described. Each culvert is complete in itself. If an accident should occur to one culvert, or to its valves or engines, the other culvert could still be used.

MACHINERY.

The power is obtained from two 30 inch turbines. The computed effective energy of the two wheels combined is 50 horsepower. Water is brought to them through a supply pipe from the canal above the lock. Both are connected by spur gearing to the main shaft. The power for operating the different parts of the machinery is taken from this main shaft by means of pulleys and belts in the usual manner. Two pumps force water into an accumulator loaded so as to give a pressure of about 120 pounds to the square inch. Water is taken from the accumulator to the engines which open and close the gates and valves. Heavy West Virginia mineral oil is used in the cylinders whenever the temperature is so low that water would be likely to freeze. There are four gate engines, one for each leaf of the upper and lower lock-gates, and four valve engines, one for each of the filling and emptying valves.

The machine house is of stone. There is a cellar, ground floor, and upper floor. The main shaft, accumulator, pumps, &c. are on the upper floor; the pen-stock, dynamo, cool-room, etc. are located on the ground floor. The accumulator passes from the cellar up through the upper floor.

The turbine iron supply pipe lies on the south side of the

lock. The inlet is 45 feet above the upper guard-gates and 7 feet below the surface of the water, and is covered with an iron grating. It has a cut-off valve 9 feet from the inlet. Its interior diameter is 36 inches.

The pump for emptying the lock is in the cellar of the machine house. It is a centrifugal, run by a belt from the main shaft. It is about 8 feet below the surface of the water. When the water is to be pumped out of the lock, the guard-gates above and below it are closed. Seventeen hours are required to empty the lock with the pump.

The dynamo for the electric lights, used in lighting the locks, is a ten-arc-light machine of the "Brush" patent. It is run by a belt from the main shaft. The force required is eight horse-power.

The power capstan is on the lock wall near the machine house. It is run by belts from the main shaft. The capstan is used for warping vessels into and out of the lock. A system of lines and snatch-blocks extends around the lock, so that vessels can be warped in from either end and to either side.

The movable dam is about 3,000 feet from the lock, and is designed to check the flow of water so that the upper guard-gates can be closed in case the lock-gates are accidentally carried away. It consists of an ordinary swing-bridge, one end of which can be swung across the canal. A series of wickets are suspended side by side from a horizontal truss hung beneath the bridge, and abutting, at either end (when the bridge is closed), against heavy buffers securely anchored to the masonry. One end of each wicket can be let down until it rests against a sill in the bottom of the canal. When the wickets are all down they form a vertical bulkhead or dam. The wickets are 23 in number; each wicket is supported in an iron frame.

The bottom of the canal under the movable dam is covered with a floor. The dead weight on the truss due to the wickets and frames is 1,600 pounds per running foot. This is counterpoised by brick work at the opposite end of the truss. The lateral pressure of the water against the wickets, is 3,400 pounds per running foot.

lar
Cc
rec
ma
pc
pas

ole
fe
fe
th
ch
2a
ve

v
U

e
c
f
r
t

The canal, upon which the General Government had spent large sums, was still in the possession of the State of Michigan. Congress on June 14, 1880, authorized the Secretary of War to receive the canal from the State of Michigan. The transfer was made June 6, 1881. Since that time the canal has been in the possession of the General Government, and all vessels have been passed through free of toll.

The chamber of the lock now building on the site of the two old locks of 1855, will be 800 feet long between the gates, 100 feet wide and 43½ feet deep. Its capacity will be 3,440,000 cubic feet. The depth of water on the miter-sills will be 21 feet, and the lift of the lock 18 feet. The volume of water in the lock chamber when filled to the level of the canal above, will be 23,338,000 gallons. The estimated capacity of the lock is four vessels, each 350 feet long and 46 feet wide, at one lockage.

The canal will be deepened to a navigable depth of 20 feet.

The estimated cost of the lock and enlarged canal is \$4,740,000. Work was begun in the Spring of 1887. Gen. Orlando M. Poe, U. S. Army, is the Engineer in charge of the improvements.

There are now engaged in the commerce of the lakes nearly 2,000 American vessels. They represent an investment of \$50,000,000 capital. Some of these vessels are of sufficient capacity to carry at a single trip the grain that would load five freight trains of thirty cars each, with over 600 bushels per car. The entire wheat crop of a 4,000 acre Dakota wheat-farm went through the canal on one of these great carriers.

Statement of the Commerce through Saint Mary's Falls

Year	Sailing vessels	Steamers	Unregistered Craft	Total Passages	Total Lockages	TONNAGE		Passengers	Coal	Flour	Wheat
						Registered	Actual Freight				
1855	(a)	(a)	(b)	(a)	(c)	106,296	(c)	4,270	1,414	10,289	(e)
1856	(a)	(a)	(b)	(a)	(c)	101,458	(c)	4,674	3,968	17,686	(e)
1857	(a)	(a)	(b)	(a)	(c)	180,820	(c)	6,650	5,278	16,560	(e)
1858	(a)	(a)	(b)	(a)	(c)	219,819	(c)	9,230	4,118	13,782	(e)
1859	(a)	(a)	(b)	(a)	(c)	352,642	(c)		8,984	39,459	(e)
1860	(a)	(a)	(b)	(a)	(c)	403,657	(c)			50,250	(e)
1861	(a)	(a)	(b)	(a)	(c)	276,639	(c)	8,816	11,507	22,743	(e)
1862	(a)	(a)	(b)	(a)	(c)	359,612	(c)	8,468	11,346	17,291	(e)
1863	(a)	(a)	(b)	(a)	(c)	507,434	(c)	18,231	7,806	31,973	(e)
1864	1,045	366	(b)	1,411	(c)	571,438	(c)	16,985	11,282	33,937	(e)
1865	602	395	(b)	997	(c)	409,062	(c)	19,777		34,985	(e)
1866	555	453	(b)	1,008	(c)	458,530	(c)	14,067	19,915	33,603	(e)
1867	839	466	(b)	1,305	(c)	556,899	(c)	15,390	22,927	28,345	(e)
1868	817	338	(b)	1,155	(c)	432,563	(c)	10,590	25,814	27,372	(e)
1869	939	399	(b)	1,338	(c)	524,885	(c)	17,657	27,850	32,007	(e)
1870	1,397	431	(b)	1,828	(c)	690,826	(c)	17,153	15,952	33,548	49,782
1871	1,064	573	(b)	1,637	(c)	752,101	(c)	15,859	46,798	26,060	1,376,782
1872	1,212	792	(b)	2,004	(c)	914,735	(c)	25,530	80,815	136,411	567,122
1873	1,549	968	(b)	2,517	(c)	1,204,446	(c)	30,966	96,780	172,692	2,119,962
1874	833	901	(b)	1,734	(c)	1,070,857	(c)	22,958	61,123	179,855	1,190,062
1875	569	1,464	(b)	2,033	(c)	1,259,534	(c)	19,685	101,260	309,991	1,213,782
1876	684	1,733	(b)	2,417	(c)	1,541,676	(c)	30,286	124,734	315,224	1,971,562
1877	1,401	1,050	(b)	2,451	(c)	1,439,216	(c)	21,800	91,575	355,117	1,349,782
1878	1,091	1,476	(b)	2,567	(c)	1,667,136	(c)	20,394	91,856	344,599	1,872,962
1879	1,403	1,618	100	3,121	(c)	1,677,071	(c)	18,979	110,704	451,000	2,603,062
1880	1,718	1,735	50	3,503	(c)	1,734,890	(c)	25,766	170,501	523,860	2,105,962
1881	1,706	2,117	181	4,004	2,130	2,092,757	1,567,741	24,671	295,647	605,453	3,456,962
1882	1,663	2,730	372	4,774	2,572	2,468,068	2,029,521	29,256	430,184	344,044	3,728,862
1883	1,458	2,620	237	4,315	2,351	2,042,259	2,267,105	39,130	714,444	657,031	5,900,662
1884	1,709	3,600	371	5,680	3,074	2,997,837	2,874,557	54,214	706,379	1,248,243	11,985,762
1885	1,689	3,354	337	5,380	2,863	3,035,977	3,256,629	36,147	894,991	1,440,093	15,274,262
1886	2,534	4,584	306	7,424	3,593	4,219,397	4,527,759	27,098	1,009,999	1,759,365	18,991,662
1887	2,562	5,968	825	9,355	4,165	4,837,598	5,494,649	32,668	1,352,987	1,572,735	23,096,562

(a) No record kept until 1864.
 (b) No record kept until 1879.
 (c) No record kept until June, 1881.

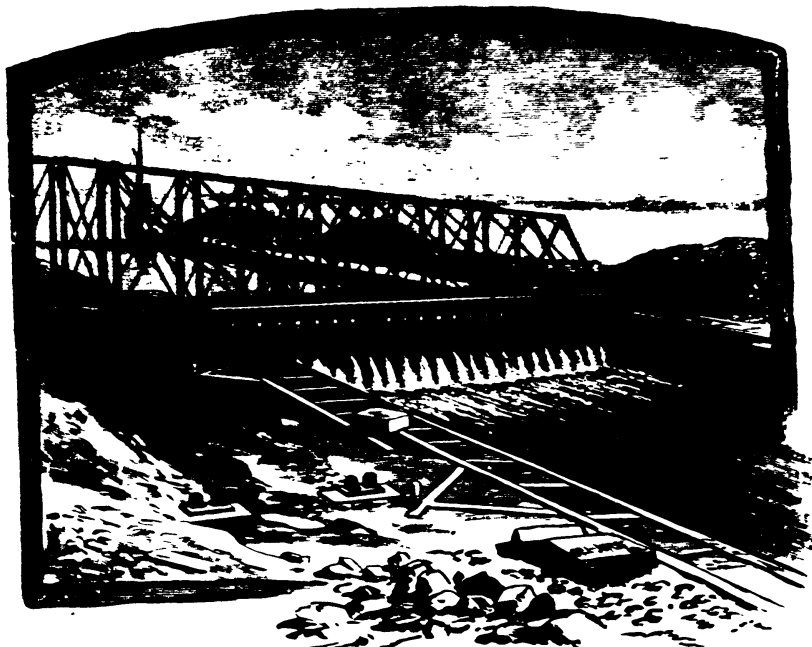
Canal for each calendar year from its opening in 1855.

Year	Grain—other than Wheat	Manufactured and Pig Iron	Salt	Copper	Iron Ore	Lumber. B M.	Silver Ore and Bullion	Building Stone	Date of Opening	Date of Closing
1855	1,040	587	3,196	1,447	126,000	(d)	(e)	June 18	Nov 23
1856	33,906	781	464	5,737	11,597	395,000	(d)	(e)	May 4	Nov. 23
1857	22,300	1,325	1,500	5,760	26,184	572,000	(d)	(e)	May 9	Nov. 30
1858	10,500	2,597	950	6,744	31,085	186,000	(d)	(e)	Apr. 18	Nov. 30
1859	71,738	5,504	2,737	7,247	65,799	(d)	(e)	May. 3	Nov. 26
1860	133,437	9,000	120,000	(d)	(e)	May 11	Nov. 26
1861	76,880	4,194	3,014	7,645	44,896	394,000	(d)	(e)	May 3	Nov. 14
1862	59,062	6,438	2,477	6,861	113,014	196,000	(d)	(e)	Apr. 27	Nov. 27
1863	78,480	6,681	1,506	1,044	181,567	1,411,000	(d)	(e)	Apr. 28	Nov. 24
1864	143,560	7,643	1,776	5,381	213,753	2,001,000	(d)	(e)	May 2	Dec. 4
1865	7,346	3,175	9,935	147,459	822,000	(d)	(e)	May 1	Dec. 3
1866	229,996	13,235	4,454	9,550	152,102	144,000	(d)	(e)	May 5	Dec. 3
1867	249,031	20,602	5,316	10,565	222,861	390,000	(d)	(e)	May 4	Dec. 3
1868	285,123	22,785	4,684	12,222	191,939	1,119,000	(d)	(e)	May 2	Dec. 3
1869	323,501	23,851	5,910	18,662	239,368	1,260,000	(d)	(e)	May 4	Nov. 29
1870	304,077	42,959	11,089	11,301	409,850	722,000	92	2,917	Apr. 29	Dec. 1
1871	308,893	54,984	36,199	14,562	327,461	1,072,000	464	5,228	May 8	Nov. 29
1872	445,774	86,194	42,690	14,591	383,105	1,744,000	306	5,213	May 11	Nov. 26
1873	309,645	44,920	29,335	15,927	504,121	1,162,000	590	2,218	May 5	Nov. 18
1874	149,999	31,741	42,231	15,346	427,658	638,000	443	401	May 12	Dec. 2
1875	250,080	54,381	43,989	18,396	493,408	5,391,000	847	2,978	May 12	Dec. 2
1876	407,772	64,091	46,666	25,756	609,752	17,761,000	935	2,102	May 8	Nov. 26
1877	343,542	39,971	63,188	16,767	563,082	4,143,000	987	2,506	May 2	Nov. 30
1878	264,674	14,892	63,520	22,529	555,750	24,119,000	650	2,754	Apr. 8	Dec. 3
1879	951,426	39,218	92,245	22,309	540,075	35,598,000	324	2,228	May 2	Dec. 3
1880	2,547,106	46,791	77,916	21,753	677,073	44,539,000	66	2,283	Apr. 28	Nov. 15
1881	367,638	87,830	63,897	29,488	748,131	58,877,000	1,400	May 7	Dec. 5
1882	473,129	92,870	176,612	25,409	967,060	82,783,000	22	5,428	Apr. 21	Dec. 3
1883	776,552	109,910	70,898	31,024	791,732	87,131,000	814	2,405	May 2	Dec. 11
1884	517,103	72,428	144,804	36,062	1,136,071	122,359,000	9,731	6,047	Apr. 23	Dec. 10
1885	482,961	60,842	136,355	31,927	1,235,132	127,984,000	3,669	8,189	May 6	Dec. 2
1886	715,373	115,208	138,677	38,627	2,087,809	138,688,000	2,009	9,449	Apr. 25	Dec. 4
1887	775,186	74,919	304,908	34,886	2,497,713	163,236,000	350	13,401	May 1	Dec. 3

(d) None shipped from Lake Superior until 1867.
 (e) None shipped from Lake Superior until 1870.

Statement of the Commerce through Saint Mary's Falls Canal for each calendar year from its opening in 1855.—Continued.

Year	Sailing vessels	Steamers	Unregistered Craft.	Total Passages.	Total Lockages.	TONNAGE.		Passengers.	Coal.	Flour.	Wheat.	Grain—other than Wheat	Manufactured and Pig Iron	Salt.	Copper	Iron Ore	Lumber B M	Silver Ore and Bullion	Building Stone.	Date of Opening.	Date of Closing.
						Registered.	Actual Freight.														
1862	1,665	2,739	372	4,774	2,572	2,468,098	2,029,521	29,256	430,184	344,044	8,728,482	473,129	92,870	176,612	25,409	987,060	82,783,000	22	5,428	Apr. 21	Dec. 3
1863	1,458	2,630	237	4,315	2,351	2,042,250	2,267,105	39,180	714,444	687,081	5,900,653	776,552	109,910	70,998	31,024	791,732	87,131,000	814	2,405	May 2	Dec. 11
1864	1,709	3,809	371	5,690	3,074	2,997,837	2,874,567	54,214	706,379	1,248,243	11,985,784	517,103	72,428	144,804	36,062	1,136,071	122,389,000	9,731	6,047	Apr. 23	Dec. 10
1865	1,689	3,354	337	5,380	2,863	3,035,937	3,256,628	36,147	894,991	1,440,093	15,274,235	422,981	60,842	136,355	31,927	1,235,132	127,984,000	3,669	8,190	May 6	Dec. 2
1866	1,689	3,354	337	5,380	2,863	3,035,937	3,256,628	36,147	894,991	1,440,093	15,274,235	422,981	60,842	136,355	31,927	1,235,132	127,984,000	3,669	8,190	May 6	Dec. 2
1866	2,534	4,584	306	7,494	3,598	4,219,397	4,527,759	27,098	1,009,999	1,759,365	18,991,436	715,373	115,208	158,677	38,627	2,087,809	138,688,000	2,009	9,149	Apr. 25	Dec. 4
1866	2,534	4,584	306	7,494	3,598	4,219,397	4,527,759	27,098	1,009,999	1,759,365	18,991,436	715,373	115,208	158,677	38,627	2,087,809	138,688,000	2,009	9,149	Apr. 25	Dec. 4
1867	2,562	5,968	825	9,355	4,165	4,997,598	5,494,649	32,668	1,352,987	1,572,735	23,096,537	775,166	74,919	204,908	34,886	2,497,713	165,226,000	350	13,401	May 1	Dec. 2
1867	2,562	5,968	825	9,355	4,165	4,997,598	5,494,649	32,668	1,352,987	1,572,735	23,096,537	775,166	74,919	204,908	34,886	2,497,713	165,226,000	350	13,401	May 1	Dec. 2
1868	2,008	5,306	420	7,808	3,845	5,130,659	6,411,423	25,558	2,105,041	2,190,725	18,594,338	2,022,308	63,703	210,433	28,960	2,570,517	240,872,000	3,385	33,541	May 7	Dec. 4



MOVABLE DAM.—CLOSED.



FORT BRADY.—FROM THE RIVER.

INDIAN NAMES.

"Ye say, they all have passed away.
That noble race and brave,
That their light canocs have vanished
From off the crested wave;
That 'mid the forests where they roamed
There rings no hunter's shout;
But their name is on your waters,
Ye may not wash them out."

The particular locality to which the Indian name properly belongs (although the same geographical name may be found elsewhere) is in parenthesis following the geographical name.

In very rare instances only, have the Indians ever adopted the European name given to a place.

Unless otherwise noted, the Indian words are in the Ojibwa (Chippewa) tongue, one of the best preserved and most widely known among the dialects of the great Algonkin family of languages.

The orthography of Bishop Baraga has not been followed in every particular;—the following changes have been made:—*ch, j, zh, ús, és, ís, ós*, are used in place of *tch, dj, j ans, ens, ins, ons*, respectively;—between vowels, *y* is used in place of *i*.

For the pronunciation of vowels, consonants,—the formation and terminology of words,—the use of short dashes, *et cetera, et cetera*, in the Chippewa and other Algie dialects,—see Vol. I, of Kelton's "Indian Names of Places Near the Great Lakes."

In addition to the usual abbreviations of the names of states and territories, the following are used:

Co.	County.
L. H.	Lake Huron.
L. S.	Lake Superior.
L. M.	Lake Michigan.
S. of M.	Straits of Mackinac.
U. P. Mich.	Upper Peninsula of Michigan.
L. P. Mich.	Lower Peninsula of Michigan.

"Ye say, their cone-like cabins,
 That clustered o'er the vale,
 Have fled away like withered leaves
 Before the autumn gale:
 But their memory liveth on your hills
 Their baptism on your shore,
 Your everlasting rivers speak
 Their dialect of yore "

Agamenticus. *Akominitigós*, "little snake island." Delaware *achgook*, *ako-*, "a snake;" *minitigós*, "a small island." Explained by the Ojibwa dialect, *achgook* would seem to be "the clinging one;" from *akwako-*, "sticking to something."

Alder Point. (Portage Lake, Houghton Co., Mich.) *Nedópikan*, "the point where there is an alder forest." *Ne-*, "a point;" *wadop*, "alder-tree;" *aki*, "land;" *wadopiki*, "an alder forest;" *-an*, the substantive ending; in the locative case, *Nedopikang*.

America. *Miniss*, "island;" or *Kichiminiss*, "big island." The Indians generally say *mandan miniss*, "this island." There seems to be a dim recollection, if not an old tradition, among many tribes, that their remote ancestry reached this country by water.

Au Train River. (U. P. Mich.) French *La Rivière au Train*, "the river of bustle and noise," or "the troublesome river." So called on account of the excitement and trouble connected with its navigation, and with the transportation of canoes and freight over the portage, in passing by this and White Fish River, from Lake Superior to Lake Michigan, and *vice versa*.

The Ojibwa name is *Madábing*, "where they descend to the shore." Cree *mattapio*, "he changes position," "he removes."

Bad River. (L. P., Mich.) *Machisibi*, "bad river."

Bark Point. (Bayfield Co., Wis.) *Newigwássikang*, "at the point where birch-trees grow." *Ne-*, "a point;" *wigwass*, "birch;" *wigwassika*, "there are birch-trees there;" *-ng*, a locative affix.

Wigwass, also means "birch-bark;" hence, the term might be rendered "at the point where birch-bark is found."

Basswood Island. (One of the Apostle Islands, L. S.) *Wigóbiminiss*, "bass-wood island."

Bayfield Village. (Bayfield Co., Wis.) *Oshkiodéna*, "new town." So called on account of having been settled later than the neighboring village of *La Pointe*.

Bear Island. (One of the Apostle Islands, L. S.) *Makominiss*, "bear island." *Makwà*, "a bear."

Beer. *Zhingobabo*, "spruce-water." The first kind of beer the Indians on the Upper Lakes became acquainted with, was the Canadian spruce-beer.

Brakeman. *Magwakwaigèwinini*, "a man (*inini*) who is pressing (*magwaige*) a bar (*-ak*)."

An example of incapsulation.

Burnt Wood River. (Wis., L. S.) French *Bois Brûlé* River; Ojibwa, *Wissdkodésibi*, "burnt-wood river."

Canada. *Monyà*, a corruption of "Montreal." An Indian synecdoche, — the part for the whole.

Canadian. *Monyàwinini*, "Canada-man." The same word also means, "greenhorn;" *i. e.*, one fresh from Canada, and still unacquainted with Indian life, ways, *etc.* The Crees use *Wemistikozhi*, "Frenchman," in the same sense.

Carp River. (Marquette Co., Mich.) *Kichinamébinisibi*, "big carp-river." *Namebin*, "a sucker," (a species of the carp). Carp River, was also the first name of the village (now city) of Marquette.

There are many small rivers of a like name, in the vicinity of the Great Lakes.

Chillicothe. *Kichinikathe*, "big wild goose." The name of one of the divisions of the Shawnee tribe. The *th*, which is found in some Indian words, as written by persons of English speech, has generally an intermediate sound between *s* and soft *th*, or *zh*. Ojibwa *nika*, "a wild goose."

Chinaman. *Wesawazhed*, "yellow-skinned." It is the participle of *osawazhe*, "he has a yellow skin." *Osawa*, "yellow;" *azhe*, "his skin is thus."

Chocolate. *Miskwabo*, "red liquid."

Cloche Island. (Ontario, L. H.) French *Isle à la Cloche*, "bell island." The Ojibwa name is *Assin Madwéweg*, "sounding stone," or "where the stone sounds."

It is said that by striking certain places on the rocky shore with a stone, a metallic sound is produced.

Coffee. *Makatémashkikivabo*, "black medicine-water." Where coffee has become a beverage of ordinary use, the Ojibwa call it *kapi*, or, if they can, *kafi*. (They pronounced the name of the late President Garfield, — *Gapi*.)

Conductor. (R. R.) *Nádasinaiganiwinini*, "ticket (*musinaigan*) gathering (*nad-*) man (*inini*)." .

Des Moines River. (Iowa.) French *La Rivière des Moines*, "River of the *Moingwena*." The Indians of this name formed one of the divisions of the Illinois tribe. *Mowingwe*, "dirty face." *Mo*, "dirt" (excrements); *-ingwe*, "he has such a face."

The ending *-na*, is peculiar to the Illinois dialect.

Detour. (Chippewa Co., Mich.) French, "turning point." The Ojibwa name for the locality is *Giwideoónan*, "a channel where they turn, sailing." *Giwidecao*, "he goes around a point by water;" *-onan*, "a boat channel."

Drummond Island. (St. Mary's River, Michigan.) *Pótiganíssing*, "mortar-shaped." From the obsolete *potigan*, (now *bodagan*), "a mortar," "a pot;" and *-issin*, "it lies thus." The term refers to a large bay on the north-western side of the island.

Eagle River. (Keweenaw Co., Mich.) *Migisiwisibi*. *Migisi*, "eagle;" *sibi*, "river." The ancient form *migisiw*, is used in compounds, and *i* is inserted for the sake of euphony.

Entry. (The mouth of Portage River, Keweenaw Co., Mich.) *Ságing*, "at the mouth." This is a common name, and the locative case of *sagi*, "the mouth of a river;" from the root *sag*, "coming forth." (See *Saugatuck*.)

European. *Kichiagaming wénjibád*, "one who comes from the great other side."

Fence River. (Marquette Co., Mich.) *Michikanisibi*, "fence river," or "fish weir river." *Michikan*, "an enclosure."

The name of Lake Michigan has been erroneously derived from this word.

Fond du Lac. (Minn.) French, "head of the lake." The Ojibwa name is *Nagájiwanang*, "where the current is stopped." *Naga-*, "stopping;" *-ijiwan*, "the water flows;" *-ang*, a locative affix.

The current of the St. Louis River is arrested below the rapids near *Fond du Lac*. the lake water backing up thus far, especially when strong north-easters are blowing.

Naugatuck, (Conn.) has the same meaning. The Ottawa equivalent would be *nagitag*; Menomineé *nagita*.

German. *Animá*; *Déchiman*; also *Meyagwed*. *Anima*, from the French *Allemand*. *Déchiman*, from Dutchman. *Meyagwed*, "one who speaks a strange language;" *i. e.* different from French or English, with which the Indians became acquainted at an earlier period.

Grand River. (L. P., Mich.) *Kichisibi*, "big river."

Grand Traverse Bay. (L. M.) *Kichiwikwed*, "big bay;" generally used in the locative case, *Kichiwikwédong*.

Grassy Point. (St. Mary's River, Mich.) *Newissagakókang*, "ash point." *Ne-*, "turning;" "point;" *wissagak*, "an ash-tree;" (*wissag-*, "strong flavored," "bitter;" *-ak*, "tree;") *-oka*, "they abound there;" *-ng*, participial ending.

Gratiot Lake. (Keweenaw Co., Mich.) *Kechigamiwashkókag*, "where rushes abound." *Kichigamiwashk*, "a rush;" etymologically "great lake grass;" *-oka*, "there is much of it." The change of *i* into *e* in the first syllable, and the final *g*, form the participle of *Kichigamiwashkoka*, "rushes abound there."

Green Bay. (Wis., L. M.) *Bojirikwed*, "deep bay;" from *boj-* (*boj-*, *poch-*, *boj-*), "penetrating," "entering deeply;" and *wikwed*, "a bay."

Gull Island. (Mich., L. M.) *Nudawáning*, "where they gather eggs." *Nud-*, "to fetch," "to gather;" *wawan*, "an egg;" *-ing*, a locative affix. The island is a great hatching place for gulls.

Gull Island. (One of the Apostle Islands, L. S.) *Gayashkominiss*, "gull island." *Gayashk*, "a gull;" originally "a scraper."

Harbor Island. (St. Mary's River, Mich.) *Bebézhigógázhíóshkázhminiss*, "horse-hoof island." Thus the Indians translate Horseshoe Island, the popular English name of the island. Formerly, they called it *Bebézhigógázhimíniss*, "Horse Island," because the early settlers on the neighboring Canadian shore used it as a summer pasture for their horses. This circumstance being unknown to later comers (the Mormons on Drummond's Island), they changed the name to "Horseshoe Island," being under the impression that the term "Horse Island" referred to the configuration of its harbor.

Harbor Springs. (Emmet Co., Mich.) *Wikwédósing*, "at the little bay;" Ottawa *Wikwedóing*, "at the bay;" from *wikwed*, "a bay." Earlier names of the village, which was settled by the Ottawas about 1827, were *New L'Arbre Croche* and *Little Traverse*.

We-que-ton-sing, a summer resort a short distance from Harbor Springs, is the anglicized form of *Wikwedósing*.

Hardwood Island. (One of the Apostle Islands, L. S.) *Gamánanósika*, "where dogwood abounds." *Manan-* or in the diminutive form *mananós*, "a cornell-cherry (dog,

wood) tree." The prefix *ga-* and the ending *-ika*, are explained elsewhere.

Irishman. *Sinandè*; *Minissing-wénjibad*; *Zhashawanibissii*; also *Zhaganash*. *Sinande*, from the French *les Irlandais*. *Minissing-wénjibad*, "one who comes from an island;" in consequence of mistaking *Ireland* for *island*. *Zhashawanibissi*, "a swallow;" by another misunderstanding, taking the French *Irlandais* for *hirondelle*, "a swallow." *Zhaganash*, "Englishman;" on account of the Irish speaking the English language.

Ishpeming. (Marquette Co., Mich.) An Indian name given by the whites to a village (now city) a few miles above Negaunee. *Ishpiming*, means "above," or "on high."

Kahoka. A division of the *Illinois* tribe were commonly called *Kahokia* (French *Kaoukia*). The Indian spelling is *Gawakia*, "the lean ones." Ojibwa *gawakadoso*, "he is extremely lean."

Kaskaskia. (A division of the Illinois tribe.) From *gaskashkiwe*, "his voice has the sound of blades of (dry) grass (or husks) being rubbed together;" "his voice is husky." *Gask*, "rubbing sound;" *-ashk*, "grass;" *-we*, "he speaks thus."

Kenosha. *Ginózhe*, or *kinózhe* (pronounced *ke-no-zha*), "a pike (fish)." *Ginózhesibi*, "pike river."

Keweenaw. (U. P., Mich.) From the Indian *Kakiwéonan*, "a short way by water across a point of land." *Kak*, "straight;" "straight through;" *kakiwe*, "he crosses a point;" *-onan*, *inaonan*, "a canoe channel."

The form *Kionconan*, which occurs in some texts, (*e. g.* in *Perrol's Memoirs*.) is owing to a mistake of the copyists, who wrote *n* for *u*, and *c* for *e*, in the French rendering of the name, which is *Kioueonan*.

The term refers to the route by Portage River and Lake, across the Keweenaw peninsula.

Killarney. (Ontario, L. P.) *Zhibáonan*, locative *Zhibáonaning*, "where they pass through a channel." *Zhiba*, "passing through;" *-onan*, "a boat channel."

An island opposite the village forms a channel, just wide enough for steamers to pass through, between the main shore and the island. (See *Cheboygan River*.)

Lake Michigamme. (Marquette Co., Mich.) *Mishigami*, "the branching lake;" so called from its form. It may also be translated "great lake."

Lake Nipissing. (Ontario, Canada.) *Kichinibishing*, the locative case of *Kichinibish*, "big lake." *Nibi*, (in the Ottawa dialect, *nibish*,) properly means "water," but is also used for "a body of water," "a small lake."

In the Pottawatomie dialect, *m'bish*, is an "inland lake."

Lake Superior. *Ojibwëkichigami*, "the great water of the Ojibwa." The Indians living on or near Lake Superior, call it simply *Kichigami*, "great water." *Kichi-* "great;" *-gami*, "water," "a body of water."

This lake was the pond of the *Giant Beaver* hunted by *Menabosko*, who broke its dams, thereby causing the *Saut Ste. Marie* and *Neebish* rapids. Another consequence was the subsidence of the water, the ancient beach being still plainly visible on many points of the shore, some ten feet above the present level of the lake. (This is Indian geology!) (See *Ashland Bay*.)

Lake of the Woods. (Minnesota and Manitoba.) *Papikwawangasagarigan*, "sand-hill lake." *Pikwawanga* (from *piko-*, "knob shaped," and *-awanga*, "there is sand on the shore"), "there is a sand-hill on the shore;" *papikwawanga*, "there are many sand-hills on the shore."

L'Anse. (Baraga Co., Mich.) The French translation of the Ojibwa *Wikwed*, "the bay," or "the head of the bay." It is generally used in the locative case, *Wikwëdong*; from *wik-*, (*wig-*, *wag-*, *wak-*) "round," "bent."

Laughing Fish Point. (Schoolcraft Co., Mich.) *Atikameg-büpid*, "laughing-whitefish."

The origin of this singular name is unknown.

Little Munusco River. (Chippewa Co., Mich.) *Anakanashkosibi*, "rush river." *Anakan*, "a floor mat;" *-ashk*, "grass," "a shaft;" hence *anakanashk*, "a rush (used for making mats)."

Little Traverse Bay. (L. M.) *Wikwëdós*, "little bay." (See *Harbor Springs*.)

Marquette. (U. P. Mich.) *Kichinamëbinisibing*, "at the big carp-river." (See *Carp River*.)

Michigan Island. (One of the Apostle Islands, L. S.) *Pagidäbiminiss*, "fishing island." *Pagid-*, "letting go," "abandoning;" *-ab*, "thread," "line;" *pagidabi*, "he sets a fish-line (with several hooks)."

Michipicoten. (Island, L. S.) A corruption of the Ojibwa name, *Mishipikwadina*, which means "there is high land in the form of a large knob," or "there is a big bluff."

This term is composed of three formatives, *mishi*, "large;" *piko*, or *pikwa*, "a ball," or "a knob;" and *dina*, "there is high land." The name was transferred to the island from a bluff on the opposite shore.

(Compare *Katahdin*, properly *Kitadin*, "big mountain." *Kit*, is the equivalent of the Ojibwa *kichi*, in the New England dialects.) (See *Pe-quod-e-nonge*.)

Mississippi. *Mishisibi*, (pronounced *me-she-se-be*), "the great river." *Mishi*, "great;" *sibi*, "river."

Moccasin. *Mäkisin*, "a shoe." From *magosid*, "foot compress." (*Mago*, "compressing;" *sid*, "foot.") Thus *minjikawan*, "mitten," "glove," literally means, "fitting the hand."

Mohegan. (The name of a New England tribe.) *Maingan*, "a wolf;" Cree *mahigan*. From *maro*, "weeping;" originally, "crying," "howling." The Delawares call the wolf *metemmen*, "old woman;" Menominee *metamoch*; Ojibwa *mindimoye*.

Montreal. (Canada.) See *Canada*.

Mugwump. Massachusetts *magwamp*, "a chief," "a superior." Thus Eliot translated the biblical term "duke" (*Gen.* xxxvi.) Ojibwa *magawiwed*, the participle of *magwiwe*, "he is stronger than another," "he surpasses;" from *mago*, "compressing," "squeezing."

Munising. (Alger County, Mich.) An Indian name given by the whites to a town on the shore opposite Grand Island, L. S. The term was intended for *minissing*, the locative case of *miniss*, "island." (See *Grand Island*.)

Muskegon River. (Wis.) *Mashkigosibi*, "swamp river." *Mashkig*, "swamp," is shortened from *mashkiki*, "grassy ground."

Namekagon Lake. (Bayfield Co., Wis.) *Namèkagan*, "sturgeon lake;" properly "a place where sturgeons abound."

Nawanikek Island, or Burnt Island. (Chippewa Co., Mich.) *Naónikeg Miniss*, "four fathom island." *Naónikeg* is the participle of *nónike*, "it is four fathoms long (wide, deep, etc.);" from *nio*, "four," and *-nik*, "arm."

There is a channel of four fathoms width between this and a neighboring island.

Nebagamain Lake. (Douglas Co., Wis.) *Nibègomowini-ságaigan*, "a lake where they float in the night (waiting for game)." (See *Fire-steel River*.)

Neché. *Niji*, "my companion," "my equal," used in the vocative only, in familiar conversation between males. An abbreviation of *nijikiwesi*, "my fellow male;" from *ni*, *n*, "my;" *wid*, *wij*, referring to companionship; and *-kiwe*, *-kiwis*, "male," "man." *Niji*, stands for our "Sir," or, as the case may be, "my boy," "boy," "man," "friend," "stranger," *et cetera*. *Nidjee*, or *Neché*, is colloquially used by the whites for "Indian." (The corresponding term among females is *nindangwe*, "my woman," "my girl," which means also "my sister-in-law." *Nikaniss*, "my brother," is a less familiar address of similar import.)

Neebish Island. (St. Mary's River, Mich.) *Anibishiminiss*, "leaf island." Hence also the name of the *Neebish Rapids*.

Negaunee. (Marquette Co., Mich.) The result of an attempt to translate the word "*Pioneer*," into Ojibwa. *Pioneer Furnace*, was the original name of the settlement. *Nigani*, means, "he walks foremost," "he leads;" from *nigan*, "ahead," "before." *Naganid*, "one who walks ahead," would have been nearer the mark.

Neshota River. (Wis.) *Nizhódésibi*, "twin river."

Oak Island. (One of the Apostle Islands, L. S.) *Mitigóminika*, "there is an abundance of acorns there." *Mitig*, "a tree;" *min*, "something round." "a small globular object," "a berry," "a grain;" hence, *mitigomin*, "an acorn;" (a grain growing on trees; just as in Anglo-Saxon *aecern*, "acorn," is formed from *aec*, or *ac*, "an oak;" and *cern*, or *corn*, "grain;") *-ika*, "there is much of it."

Odanah. *Odéna*, "a village." This word is derived from *-ode*, "family," from which we also have *Totem*.

Ogontz River. (Delta Co., Mich.) *Ogáásibi*, "little pickerel river." *Ogás*, is the diminutive form of *ogá*, "a pickerel."

Ontonagon River. (Mich.) *Nandonaganisibi*, or *Nindonaganisibi*, (pronounced *N'donaganisibi*.) "fishing river." *Nandone*, "seeking," "searching," "hunting;" hence, *nandonagan*, "a fishing place;" the same as the Ottawa *nandonagan*.

The Indians, who are as expert as any other people in getting up a story to suit a name, relate the following, which we quote from *Baraga's Dictionary*: "A squaw once went to this river to fetch water with an Indian earthen dish, but unfortunately the dish escaped from her hand and went to

the bottom of the river, whereupon the poor squaw began to lament: *Nia, nind onagan, nind onagan*, "Ah, my dish! my dish!" Such is the Indian tradition; but more likely, the word is the same as the Ottawa *nandnoagan*, "a fishing place;" from the verbal *nando*, "to go in search of." *Nandonige*, "he is searching."

Oshkosh. From *Oshkázh*, the name of a Menominee chief. The meaning of the word is a "nail," "hoof," or "claw." In compounds, it becomes *gázh*, as *pizhikiwigázh*, "an ox claw;" *bebejigogázhi*, "a horse;" literally "an animal with but one nail (hoof) at each foot."

Outer Island. (One of the Apostle Islands, L. S.) *Kichíeshkwewindeg* (*miniss*), "great outlying island." *Kichi*, "large;" *ishkwoe*, "last;" *agwinde*, "it lies in the water;" *ishkwewinde*, "it is the last island;" *eshkwewindeg*, is the participle. The addition of *miniss*, "island," is optional.

Pecksville. (St. Joseph's Island, St. Mary's River, Mich.) *Gashkéowang*, "where they peel off something (of an animate being)."

According to a widespread belief, the scrapings of a dragon's (Manitou-Serpent's) horns are a most effective "medicine;" but to obtain them from the living Manitou, great cunning and courage are required. This feat was performed at the place in question, at the mouth of a little stream.

Perhaps the configuration of the neighboring shore-line, resembling (on the map) a horn-snake's head, gave rise to the legend. However this may be, the scrapings, it is said, were sold at a high price to the neighboring Hurons.

The name Pecksville appears on older maps. The neighborhood has been abandoned by the settlers, and is now called *Gashkaywonk*, from the Indian name.

Pemmican. Cree *pimikkan*, "prepared fat;" from *pimikkeo*, "he prepares fat (*pimiy*; Ojibwa *bimide*);" i. e., for use on a journey, in the well known way of mixing it with powdered sun-dried meat, and compressing the mixture into bags.

Pictured Rocks. (Schoolcraft Co., Mich.) *Ishkwé-yázhívikong*, "at the last cliff." *Ishkwoe*, "the end of anything," "last;" *azhívik*, "rock," "cliff;" *-ong*, locative affix.

In traveling east, along the south shore of Lake Superior, after passing the Pictured Rocks, no more steep rocks are encountered for a considerable distance.

Pigeon Island. (One of the Apostle Islands, L. S.) *Omimiminiss*, "wild pigeon island." *Omimi*, "a wild pigeon." (*Wabmimi*, "a white pigeon," i. e. "a domestic pigeon.")

Piscataway. In the Maryland dialect *Paskátowe*, "the river branches;" the equivalent of the Ojibwa *bake-tigweya*; from *bake*, "aside," "another way;" and *-tigweya*, "the river runs thus." Cree *paskestikweyaw*.

Pistake Lake. (Ill.) *Peshétiko-Ságaigan*, "wild goose river lake." (See *Fox River, Ill.*)

Pocahontas. *Pagwanédass* "Hole-in-the-Legging," "perforated-legging." *Pagwane*, "hollow;" *-dass*, (as an independent word, *midass*), "legging," "stocking."

Portage Lake. (Keweenaw Co., Mich.) *Onigami-Ságaigan*, "portage lake." *Onigam*, (Cree *onikap*), "a portage;" *ságaigan*, "an inland lake." *Onige*, "he makes a portage;" Cree *onikerw*, "he carries on his shoulders;" *Ságaigan*, (Cree *sakahigan*), is a compound of *sag*, "coming forth," (referring to the outlet of inland lakes,) and the obsolete *-aigan*, which appears in the Delaware *kitahikan*, "the ocean;" literally "big lake."

NOTE.—The portage was between this lake and Lake Superior, where there is now a canal.

Rabbit Island. (One of the Apostle Islands, L. S.) *Wabósomíniss*, "rabbit island." *Wabos*, "a rabbit;" originally "the white one," or perhaps, "the white rover."

Raspberry Island. (One of the Apostle Islands, L. S.) *Miskwiminika*, "raspberries are plentiful there." *Miskwimin*, "raspberry;" literally "blood-berry."

Redcliff. (Bayfield Co., Wis.) *Passábikang*, "at the cleft rock." *Pass*, "splitting;" *-abik*, "stone," "rock;" *passabika*, "the stone is cleft," or "there is a steep rock."

The term refers to a cleft in a ledge of rock, which is between *Chicago Bay* and *Redcliff*.

Red River of the North. *Miskwágamisibi*, "red water river." *Misko*, "red;" *-agam*, "water."

Round Island. (St. Mary's River, Mich.) *Kokóshimíniss*, "hog island." *Kokosh*, "a pig;" from the French *cochon*.

This small island was formerly shunned by the Indians, and the more superstitious still fear to use it for a camping ground; for, as they say, a *manitou* in the form of a large pig, once appeared there to a traveling party, and forbade them on their peril to camp on *his* island.

St. Joseph's Island. (St. Mary's River, Ontario.) *Pekwádináshing*, "where there is a bad bluff." *Pikwádina*,

"there is a bluff;" *-shin*, a vituperative inanimate verbal ending; by changing *i* to *e*, and affixing *g*, the participle is formed.

A ridge of land with a steep bluff traverses the island.

St. Louis River. (Minn.) *Kichigámisibi*, "big lake river." It was the highway to Lake Superior for canoe travelers from the western wilds;—the river leading to the big lake.

Sand Island. (One of the Apostle Islands, L. S.) *Gagashkitáwanga*, "where the sand forms an obstruction," or "where there is a sand-bar." *Ga-*, a participle prefix, obsolete in the Ojibwa dialect, but still used in others. *Gashk-*, "tying," "closing up;" *mitawanga*, "there is nothing but sand on the shore."

Sailor's Encampment. (Chippewa Co., Mich.) *Ashigánikan*, "the place where bass-fish (*ashigan*) is found."

Scotchman. *Ecosse*, from the French *Ecosseis*. Also *Ipitótowè*, "one who lays great stress on his words."

Sebewa. *Sibiwé*, (also *sibiwés*, and *sibiwíshé*.) "a rivulet," "a brook."

Sebewaing. *Sibiweng*, "at the creek." *Sibiwé*, or *sibiwíshé*, is the diminutive of *sibi*, "river."

Seven Stars. (The constellation *Pleiades*.) *Makozhigwan*, "bear's carcass."

Shabominikan Bay. (La Pointe Island, L. S.) *Zhabóminikan*, "gooseberry-place." *Zhabomin*, "gooseberry;" *zhabominika*, "gooseberries abound there." *Zhabo-*, "passing through;" *min*, "a berry;" hence *zhabomin*, "a berry that causes diarrhoea," "cathartic berry."

Sinsinawa. *Sinsinawè*, or *Zhinzhínawè*, commonly *Zhinawè*, "rattlesnake." *Zhinawè*, "it makes a rattling sound." Another name for the rattlesnake, is *zhishigwè*, from *zhishigwan*, a gourd, bottle, or bladder, used as a "rattle."

Spanish River. *Eshpayósibi*, "river of the Spaniard." *Eshpayo*, "a Spaniard;" from the French *Espagnol*.

Spirit Island. (One of the Apostle Islands, L. S.) *Manitómínissés*, "little island of the Manitou."

This island contains about one acre.

Steamboat Island. (One of the Apostle Islands, L. S.) *Ishkoténábikwánimíniss*, "fire-ship island." *Ishkote*, "fire;" *nabikwan*, "ship;" *miniss*, "island." (*Nabikwan*, is corrupted from *nabagoon*, "a flat vessel;" *nabago*, "flat;" *-on*, "canoe," "boat," "vessel.")

Stockbridge Indian. (A remnant of Mohegans, near Green Bay, Wis.) *Wabanáki*, "Eastlander."

Sturgeon Bay. (Door Co., Wis.) *Namèwikwed*, or *Namewikwedós*, "sturgeon bay," or "little sturgeon bay." *Name*, "a sturgeon;" *wikwed*, "a bay." Generally used in the locative case, *Namewikwedong*, or *Namewikwedósing*.

Sturgeon River. (Menominee Co., Mich.) *Namèsibi*, "sturgeon river." *Namè*, "a sturgeon." In the eastern Algic dialects, *namä*, or *namäs*, (according to the Moravian [German] spelling, *namae*, *namaes*,) means a "fish."

Sugar Island. (St. Mary's River, Mich.) *Sisibákwa-tòminiss*, "sugar-tree island." *Sisibakwat*, "sugar;" from *sib*, or *sisib*, "flowing," "dropping;" and *-akwa*, referring to a tree.

This island is also called *Ishkónigan*, "a reserve" (Indian Reserve); from *ishkonige*, "he keeps back."

Superior. (Douglas Co., Wis.) *Wayekwákichigáming*, "at the end of the big lake." *Wayekwa*, means "at the end of —;" *kichigami*, "a large body of water."

Tawas. (Iosco Co., Mich.) From *Otáwás*, "Little Ottawa;" the name of an Ojibwa chief, who once lived in that neighborhood.

Tea. *Anibishábo*, "leaf-water." "leaf-fluid." Tea, in leaves, is simply called *anibish*, "leaf." *Kichianibish*, "big leaf," means "cabbage."

The Ojibwa are acquainted with several different kinds of herbs and leaves that serve as substitutes for our tea.

Three Lakes. (Baraga Co., Mich.) *Ayanikègámag*, "connected lakes," or "where there is a chain of lakes." It is a participle of *anikegagama*, "there is a succession (*anike*-, *anikeg*-) of lakes (*-agama*)." (See *Alleghany*.)

Toboggan. A corruption of the Old Algonkin *otabágan*, "a sleigh." The Ojibwa form is *odában*, from *odabi*, "he drags." *Titibisse-odaban*, or *titibidaban*, "a sledge on wheels," "a wagon;" though, commonly, they use *odaban* for both sleighs and wagons. *Ish-kotè-odában*, "fire-wagon," "locomotive."

Torch Lake. (Houghton Co., Mich.) *Wasswéwining*, "where they spear fish by torch-light." *Wasswa*, "he is spearing (*akowa*) fish by the light (*wasseyá*) of a torch;" *wasswéwin*, "the act of spearing fish by torch-light."

Traverse Island. (Keweenaw Bay, Mich.) *Nimínáganiminiss*, "crossing island." *Niminagan*, "a crossing place;" *miniss*, "island."

Triangle. (A small constellation situated between *Aries* and *Andromeda*.) *Makóshigwan*, "bear's head." *Makwa*, "bear;" *-shigwan*, "head."

Two Hearted River. (Chippewa Co., Mich.) An erroneous translation of *Nizhódésibi*, "twin river." *Nizhódé*, "a twin." *Nizh*, "two;" *-óde*, "family," "origin," "descent."

Two rivers emptying at or near the same place, are apt to be thus called: *e. g.*, the *Neshota River*, in Wisconsin.

Two Hearted River would be, *Nizhódésibi*. *Nizh*, "two;" *-dè*, "heart." The difference in the pronunciation of the two words is very slight.

Vermilion River. (Ill.) *Osanamanisibi*, "vermilion river." (See *Lake Vermilion*.)

Wabansa. (A noted Pottawatomie chief.) *Wabanánissi*, contracted into *Wabaníssi*, "White Eagle." *Wab*, "white;" *anani*, *ananissi*, "eagle." The latter term is obsolete in Ojibwa, but appears in the compound *migisananissi* (originally *migasananissi*), "eagle fighter;" in the Cree *asponasio*, "eagle;" and in the Delaware *woaplanne* (*wabalané*), a "bald eagle;" etymologically "white eagle."

Wabansa was present at the massacre of the Fort Dearborn garrison August 15, 1812, and signed both (1821-1836) of the Indian Treaties made at Chicago. The sculptured face on the so-called "*Wabansa stone*" (in the yard at 104 Pine St., Chicago), is said to be his portrait.

Wacheo. *Wajiw*, the final *w* having almost the sound of *oo*. This term is common to the Ojibwa, Ottawa, Pottawatomie, Cree and other Algonkin dialects, and means "a mountain," or "a hill."

Mount Wachusett owes its name to the same root, which in a mutilated form, is also contained in *Massachusetts*.

Wapakoneta. (Menominee.) *Wapikanita*, "clay river." (See *Auglaize River*.)

Waugoshance. (Island, L. M.) *Wagoshés*, "little fox;" from *wagosh*, "fox;" with the diminutive ending *és*.

Waukesha. *Wakoshé*, the Miami form of the Ojibwa *wagosh*, "a fox."

Whiskey. (*Rum, etc.*) *Ishkotéwábo*, "fire-water."

This word, unfortunately but too well known to whites in Indian neighborhoods, is generally pronounced by them *shkótéwábo*. The principal accent is on the *e*; but this vowel is short, while *a* is long,—hence the mistake.

White Fish Point. (Chippewa Co., Mich.) *Nēmīkong*, "beaver point." *Ne-*, "a point;" *amik*, "a beaver;" *-ong*, locative affix.

Nemikag, "point of breakers," may have been the original name. (See *Ashland Bay*.)

White River. (Ashland Co., Wis.) *Batōtigwéyag*, "at the double river," or "where the water runs along-side." *Bito-*, "double," "lining;" *-tigweya*, "the water runs." The change of *i* to *a* and the addition of *g*, form the participle.

White River runs for some distance parallel with *Bad River*, before emptying into it.

Willimantic River. (Conn.) *Wánamanítikot*, the New England equivalent of the Ojibwa *onamanitigong*, "at the vermilion (red clay) river." *On-*, "good," "beautiful;" *-aman*, *-man*, "ore," "earth;" hence *onaman*, "red clay," "vermilion;" *-itig*, "running water."

The name, spelled in old documents *Waramanticut*, also *Wallamanticuck*, has the same meaning.

(Compare the Abnaki *ouramann* as given in Rasles' dictionary; the Delaware *walamen*, "painting;" and also *Walamunk*, "at the place of paint.")

Wilson's Island. (One of the Apostle Islands, L. S.) *Ežhawégondeg* (*miniss*), "transverse island." *Azhawé*, "transversely," "crosswise;" *agwinde*, "it lies in the water." The change of the initial *a* into *e*, and the addition of *g*, form the participle.

Wine. *Zhóminābo*, "grape-water." *Zhómin*, (from *osawamin*, "yellow berry,") "a grape;" *-abo*, "water," "fluid;" e. g., *ozhibíiganabo*, "writing fluid," "ink;" *mashkikiwabo*, "medicine water," "liquid medicine." (*Mashkiki*, from the formative *-ashk*, "a blade," had originally the meaning "herb." The Cree *maskikiy* is still used in this sense.)

Yuba. *Ayābe*, "Male-Beast;" the name of a noted Ojibwa warrior. *Ayā*, "any living thing;" *-abe*, "male." The compound *ayabe*, however, is restricted to the males of *mammalia*. *Ayabe* is sometimes called *Kichiayabe*, "Big-Male-Beast," in order to distinguish him from *Ayabés*, "Little-Male-Beast." The former is spoken of as a man of immense strength, while the latter is said to have excelled in woodcraft; being able—the Ojibwa assert—to reach in a bee line, the most distant points—by night.

WHY NOT SAVE MONEY.

Why will you pay the highest retail price for your papers and magazines when you can get them at the lowest Club Rates,—and get them direct from the publishers, the same as if you had ordered direct from them.

We do not handle any of the periodicals,—**we consolidate all orders and forward them daily**,—we do a wholesale commission business in a business-like way,—we require cash with your order,—we charge you more than we pay, as we are not supplying you with reading matter for the purpose of getting your trade in other lines,—we propose to save you money and at the same time make money for ourselves,—we mean business every time and we are “minute men” in all our dealings.

Write your address and that of your friends upon a postal card, and send it to us, and our Club List will be mailed to you **Free**.

KELTON & CO.,

Publishers' Agents,

QUINCY, MICHIGAN.

REFERENCES:—

Postmaster, - - Quincy, Michigan.
First National Bank, - - " "
Detroit Free Press, - - Detroit, Michigan.
Secretary Y. M. C. A., - - " "
J. W. Davis & Co, Mackinac Island, Mich.



THE CHICAGO AND NORTH-WESTERN RAILWAY,

WITH over 7000 miles of steel track in Illinois, Iowa, Wisconsin, Michigan, Minnesota, Nebraska, Dakota and Wyoming, penetrates the agricultural, mining and commercial centers of the entire West and North-West.

The management is ever alert to meet requirements of travel, in the use of every meritorious device which can contribute to the perfection of its service and promote the comfort and safety of its patrons.

FAST VESTIBULED TRAINS, equipped with modern day coaches, sumptuous dining cars, and new Wagner and Pullman sleeping cars of the most luxurious pattern, run direct between Chicago, St. Paul and Minneapolis, Council Bluffs and Omaha, connecting with through trains to Portland, San Francisco, Los Angeles, and all Colorado, Utah, Oregon, Washington Territory, California and Pacific Coast Points.



FOR COLORADO POINTS it provides **THROUGH VESTIBULED TRAIN SERVICE BETWEEN CHICAGO AND DENVER**, and is the only line reaching the rich mining regions of the **BLACK HILLS OF DAKOTA**.

SOUTH DAKOTA.

Double daily train service from Chicago to all important points in South Dakota, renders

THE NORTH-WESTERN THE FAVORITE ROUTE
For Home-Seekers and Settlers.

For full information apply to any ticket agent, or the General Passenger Agent of the **CHICAGO & NORTH-WESTERN RAILWAY**, Chicago, Ills.

J. M. WHITMAN,
General Manager.

H. C. WICKER,
Traffic Manager.

E. P. WILSON,
General Passenger Agent.

Read this to Your Wife and Babies

AND THEN

Make a Note of it Yourself,

that all periodicals ordered through our agency are sent to you direct from the publishers.

KELTON & CO.,

Publishers' Agents,

QUINCY, MICHIGAN.

N. B.—We are NOT located in Illinois, but we are in Branch Co., Michigan,—82 miles west of Toledo, Ohio,—6 miles east of Coldwater, Mich,—and on the Lake Shore & Michigan Southern R. R.

St. Ignace Republican

P. D. BISSELL, Editor,

St. Ignace, Mackinac Co., Mich.

PUBLISHED EVERY SATURDAY.

\$2.00 A YEAR.

MICHIGAN CENTRAL

— THE —
DIRECT ROUTE
TO

MACKINAC 
 ISLAND.

Through Cars from Detroit, connecting at Bay City with through cars from Chicago and Jackson.



TO
"AN ISLAND,
GREEN
AND
GRASSY,
YONDER IN THE
BIG-SEA-WATER."

E. C. BROWN,
General Superintendent,
DETROIT, MICH.

O. W. RUGGLES,
Gen'l Pass'r and Ticket Ag't,
CHICAGO, ILL.

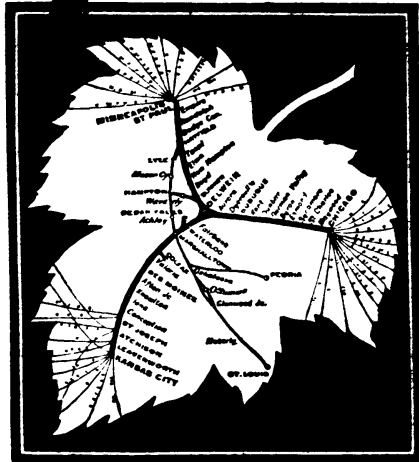


ARCH ROCK, MACKINAC ISLAND

CHICAGO, ST. PAUL & KANSAS CITY

RAILWAY,

CONNECTING THE CITIES OF
CHICAGO, DUBUQUE, WATERLOO,
WAVERLY, MARSHALLTOWN,
DES MOINES, ST. JOSEPH,
KANSAS CITY, ST. PAUL & MINNEAPOLIS.



ROUTE OF FAST LIMITED EXPRESS,

Time, 14 Hours,

TO AND FROM

CHICAGO, ST. PAUL AND MINNEAPOLIS.

NEW EQUIPMENT! PUNCTUAL SERVICE!

JNO. M. EGAN,

General Manager.

W. R. BUSENBARK,

Gen'l Pass. Agent, CHICAGO

PLEASE SPREAD THE NEWS

THAT

KELTON & CO.,

Publishers' Agents,

QUINCY, - - MICHIGAN,

HAVE THE LARGEST NEWSPAPER SUBSCRIPTION AGENCY IN THE
WORLD, AND

DON'T YOU FORGET IT.



Is conceded by even its competitors to be the

BEST

all-around Typewriter manufactured.

It has received more Awards and Medals for superiority than any other.

—THE—
MICHIGAN AGENCY

will be pleased to forward
Circulars of the Machine
and Supplies.

26 Congress St. West,
DETROIT.





OWNING AND OPERATING THE ONLY LINES
OF STEEL AND IRON SIDEWHEEL
STEAMERS ON THE GREAT
LAKES.

FROM
CLEVELAND AND DETROIT
TO
MACKINAC ISLAND
AND
THE HUNTING AND FISHING RESORTS OF NORTHERN MICHIGAN.

Lake Tours! Palace Steamers! Low Rates! Quick Time!

STEAMERS

City of Alpena, City of Mackinac

Four Trips per Week Between

DETROIT, MACKINAC, ST. IGNACE, CHEBOYGAN, ALPENA, OSCODA,
SAND BEACH, SANILAC, PORT HURON AND ST. CLAIR.

LEAVE DETROIT MONDAYS AND SATURDAYS - 10 P. M. WEDNESDAYS AND FRIDAYS - 9 A. M.
ARRIVE MACKINAC WEDNESDAYS AND MONDAYS 7 A. M. THURSDAYS AND SATURDAYS 5 30 P. M.

Close Connections with Steamers for

Chicago, Milwaukee, Traverse City, Charlevoix, Petoskey, Harbor Springs,
Sault Ste. Marie, Marquette, Portage, Duluth, and with Duluth,
South Shore & Atlantic R. R. for Marquette, the
Copper Regions and Duluth.

STEAMERS

City of Cleveland, City of Detroit (new)

Every Week Day Between

CLEVELAND AND DETROIT

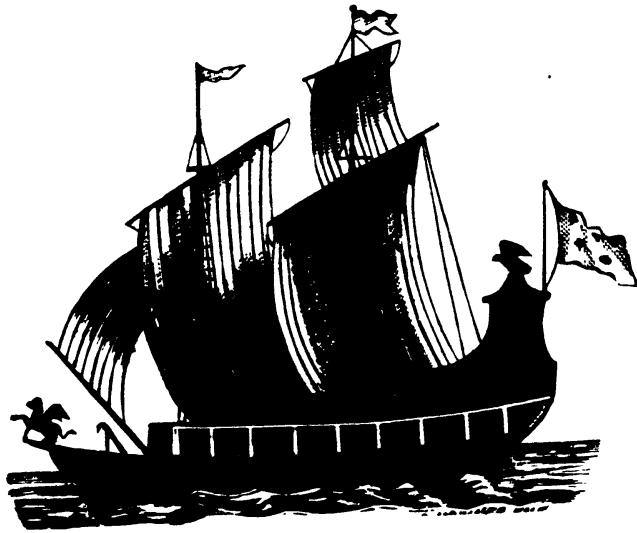
LEAVE CLEVELAND - - - 9.30 P. M. | ARRIVE DETROIT - - - 5.00 A. M.
LEAVE DETROIT - - - 10.15 P. M. | ARRIVE CLEVELAND - - - 5.00 A. M.

Special Sunday Night Trips June, July, August and September.

For Illustrated Book, Rates or Tickets, apply to your Ticket Agent or address

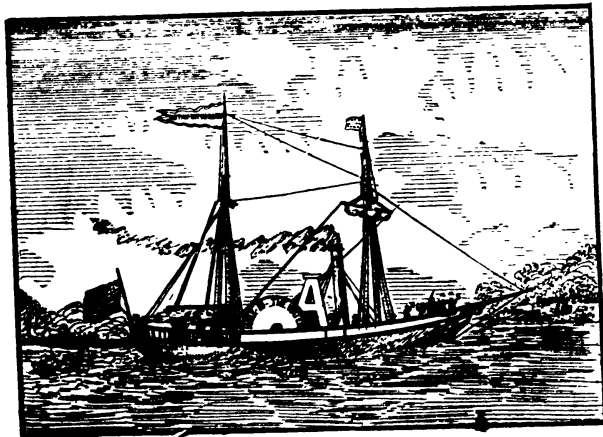
THE DETROIT AND CLEVELAND STEAM NAV. CO.

E. B. WHITCOMB, G. P. A., Detroit, Mich.



THE "GRIFFON."

The First Vessel on the Upper Lakes.
Built by LaSalle, 1679.



"WALK-IN-THE-WATER."

First Steamboat on the Upper Lakes. Built in 1818.
At Mackinac in 1819.

The Handsomest Trains ^{IN} _{THE} World!

THE PULLMAN VESTIBULE TRAINS

NOW RUNNING BETWEEN

CHICAGO

AND

KANSAS CITY

OVER THE NEW

“Santa Fe Route.”

Chicago, Santa Fe & California R'y

Office, 212 Clark Street, corner Adams Street,

CHICAGO,

J. J. BYRNE, - Ass't Gen'l Passenger Agent.

How Can You Beat It

WE TAKE ORDERS FOR ALL THE

LEADING PERIODICALS

—OF—

Europe and America

—AT THEIR—

CLUB RATE PRICES.

We do not handle the periodicals,—we do not furnish sample copies,—we do a regular commission business,—we require cash with each order,—we send a receipt for all remittances,—give us a trial order and see what is what.

KELTON & CO.,

Publishers' Agents,

QUINCY, MICHIGAN.

THE NEW MACKINAC

(Built upon the site of the "Mackinac House," which was burned in January, 1887.)

MACKINAC ISLAND, - - MICH.

100 GOOD ROOMS.

Terms, \$2.00 and \$2.50 Per Day.

This house is well arranged for the comfort of tourists, and is conveniently located on the Lake front, and forty feet from the only passenger wharf on the Island. The furniture, carpets, etc., are all NEW. The house is equipped with electric bells, and modern conveniences.

SAVE HACK HIRE TO AND FROM YOUR HOTEL.

FRED. R. EMERICK, Proprietor and Manager.

This hotel was built for the special comfort of summer boarders.

On arrival, each guest will be asked how he likes the situation, and if he says the hotel ought to have been placed upon Fort Holmes or on Round Island, the location of the hotel will be immediately changed.

Corner front rooms, up one flight, for every guest. Baths, gas, electricity, hot and cold water, laundry, telegraph, restaurant, fire alarm, bar-room, billiard table, sewing machine, piano, and all modern conveniences in every room. Meals every minute, and consequently no second table. French and German dictionaries furnished every guest, to make up such a bill of fare as he may desire.

Waiters of any nationality or color desired. Every waiter furnished with a fan, button-hole boquet, full dress suit, ball tablet, and his hair parted in the middle.

Every guest will have the best seat in the dining hall and the best waiter in the house.

Our clerk was specially educated for "The New Mackinac," he wears the original Koh-i-nor diamond, and is prepared to please everybody. He is always ready to sing any song, play any musical instrument, match worsted, take a hand at draw-poker, play billiards, "see a friend," loan his eye-glasses, sharpen your pencil, get the cinder out of your eye, take you out rowing, lead the german, amuse the children, make a fourth at whist, or flirt with any young lady, and will not mind being cut dead when Pa comes down. He will attend to the telephone and answer all questions in Choctaw, Chinese, Chippewa, Volapuk, or any other of the Court languages of Europe.

The proprietor will always be happy to hear that some other hotel is "the best in the country." Special attention given to parties who give information as to "how these things are done in Boston."

We Lead the Procession

A S

OUR LOCATION is in a pleasant village where the expenses of labor and living are not half as great as in a city; we are on the great *Fast Mail Route* between New York and Chicago; (on the Lake Shore & Michigan Southern R. R., 82 miles west of Toledo; 162 miles east of Chicago;) we have four mails a day each way and considering the slowness of the delivery of mails in a city (several hours, while here, *we get them within ten minutes after trains arrive*), we can copy and forward orders quicker than if in a city, except it be for the few papers published in the city we might be located in, and the difference in even these could not exceed six hours.

WE FORWARD ORDERS DAILY.

We do not supply sample copies.

Every order receives immediate attention.

Our prices include postage in the U. S. and Canada.

The P. O. at Quincy, Michigan is a Money-Order office.

Please do not crowd your order sheets,—but devote *one line* to each periodical.

Hereafter our Annual Club List will be ready to mail by December first of each year.

SUBSCRIPTIONS CAN BEGIN AT ANY TIME and back numbers can usually be included at same rates.

You waste time in writing given names of subscribers, as publishers put only initials on their papers.

When ordering the *renewal* of a subscription it is *not* necessary to give the date; simply write "*renewal*."

Our terms are for advance paying subscribers. Those who owe on past account must settle with the Publishers.

We file *orders* away by **DATES**, and if you have occasion to refer to or ask about one, always give **DATE** of it or *we cannot find it*.

RECEIPTS ARE SENT BY POSTAL CARD for all remittances except those in registered letters, which we receipt for on the registry card.

ONLY FULL YEAR subscriptions are taken at our club prices; if shorter time is desired, send ten cents in addition to the proportionate price.

Our prices are subject to such changes as publishers may make. If they increase, we notify you and await your instructions; if they decrease, we return the surplus you may have sent.

We cannot give special rates on large orders,—we have but one price in all cases; we only charge a fair and reasonable compensation to cover necessary expenses and allow a very moderate profit to us.

Our responsibility ceases as soon as your paper begins to come with the correct credit on the address label. If publishers fail or suspend, the subscriber loses; just as he would if he had subscribed direct with them.

When your paper begins to come you will know that the publisher has received your name and money; if any copies are lost by mail, or if you want to change your address after that, you should write to them and not to us.

All periodicals are sent to you postpaid *direct from the publishers*, thus insuring promptness and regularity, as *we forward your name and money to them at once*. If, by any accident, you do not receive your first paper within a reasonable time, **WRITE TO US**, telling [1] *name of paper*, [2] **DATE** of your order, [3] *name and address of the subscriber*, which will enable us to write necessary particulars to publishers to rectify the delay.

SEND YOUR MONEY by Bank Draft, payable in *Chicago, Detroit, Toledo, or New York*; by Express Order; by Money-Order payable in *Quincy, Michigan*; or by Registered Letter.

Make all orders payable to **KELTON & CO.** Small amounts of currency sent in ordinary letters are seldom lost, but we cannot become responsible for money so sent. One and two cent postage stamps will be accepted for amounts less than one dollar.

KELTON & CO.,

Publishers' Agents,

QUINCY,

MICHIGAN.

Our Club List Mailed FREE to any Address.



MAIN STREET, MACKINAC.

DELTA TRANSPORTATION CO'S

Petoskey, Cheboygan, Mackinac and Sault Ste. Marie

DAILY LINE OF STEAMERS.

TOURISTS' FAVORITE ROUTE.

"Soo" Division	TO The "Soo."	"SOO" DIV'N.	TO Cheboygan.	Inland Division
Through the Beautiful and Picturesque St. Mary's River.	6 00 A.M.	Lv. Cheboygan...Ar.	5 30 P.M.	Through a chain of beautiful Lakes and Rivers, abounding in a great variety of novel attractions.
	7 30 "	" Mackinaw City....	4 00 "	
	9 00 "	" Mackinac Island....	2 30 "	
	5 30 P.M.	Ar. S't Ste. Marie.Lv.	6 00 A.M.	
Beginning July 1st and continuing to Sept. 1st, Sunday trips will be made on this division.				
Str. "SOO" CITY.	TO Petoskey.	INLAND DIV'N.	TO Mack. I'd.	Steamer BOWEN.
BYRON ARMSTRONG, Capt. FRANK J. CARLIS, Clerk	7 30 A.M.	Lv. Mackinac Isl'd. Ar.	6 30 P.M.	
Str. MINNIE M.	9 45 "	Ar. Cheboygan. } Lv.	4 30 "	A. H. FIELD, Captain
J. B. MONDOR, Capt. FRANK M. HUBBARD, Clerk	10 30 "	Lv. Cheboygan. } Ar.	4 00 "	Steamer JULIET.
	12 30 P.M.	Ar. Topinabee. } Lv.	1 30 "	
	1 30 "	Lv. Topinabee. } Ar.	12 30 "	
	5 15 "	" Oden.....	9 30 "	
	6 00 P.M.	Ar. Petoskey. } Lv.	9 00 A.M.	
The boats of this division run DAILY, connecting at Oden with special train to and from Petoskey.				

SEND FOR A COPY OF

"WHERE TO GO and HOW TO GET THERE."

E. A. PLUM, Gen'l P. and F. Ag't, W. R. OWEN, Manager,

CHEBOYGAN, MICH.

33 Metropolitan B'k, CHICAGO, ILLS.

**CHICAGO
NORTH WESTERN
RAILWAY**

**TRAIN
SERVICE**

THOROUGHLY
ORGANIZED.
FULLY
EQUIPPED.

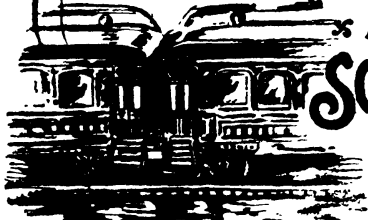
Between
CHICAGO

ST. PAUL & MINNEAPOLIS,
COUNCIL BLUFFS & OMAHA
DENVER & THE BLACK HILLS.

& ALL POINTS IN
SOUTH DAKOTA

COLORADO,
CALIFORNIA,

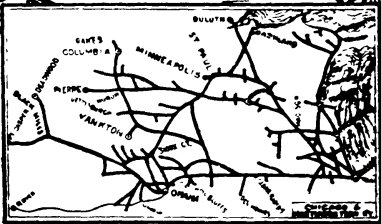
OREGON & WASHINGTON.



It is the pleasure of
Ticket Agents, at all
Coupon Stations, on all connecting
lines, to furnish information and
Through Tickets over this great
Highway.

**CHICAGO OFFICES
206 & 208, CLARK ST.**

J. M. WHITMAN, H. C. WICKER, E. P. WILSON.
Gen'l Mgr. Trsf. Mng'r Gen'l Pass. Agt.



From Vol. I of Kelton's "Indian Names of Places Near the Great Lakes."

Chicago. (Ill.) *Zhikagong*, the locative case of *zhikago*. "a skunk," also used as a personal name.

Early French writers mention a chief named *Chicagou*, who lived near the site of the present city. According to tradition, *Chicagou* was drowned in the river.

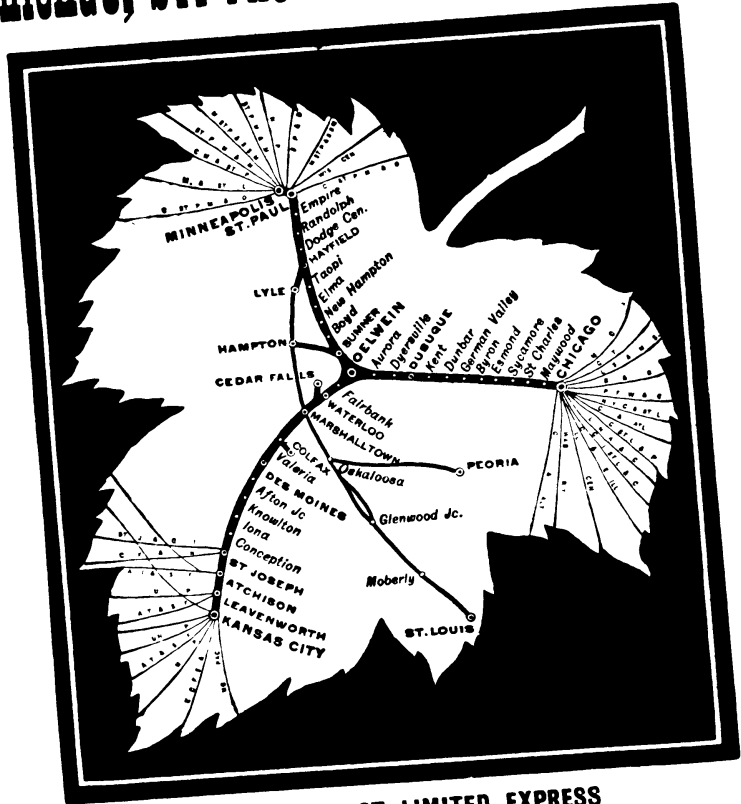
Whatever may have been the occasion for applying that name to the locality, there can be no question about the etymology of the word. Algonic proper names are very commonly derived from the name of animals by the addition of *o*. Thus *Zhikago*, is *zhikag* used as a man's name; and *zhikag*, or *zhigag*, is the *Mephitis Americana*, or "skunk." The English term "skunk," itself is a corruption of the *Abenaki* form of the word, which is, *sikango*.

Some have sought to lend dignity to the term, by tracing in its first syllable, the second syllable of *kichi*, "great." This is plainly inconsistent with the Indian pronunciation of the name.

The origin of the word, however undignified, is plain: *zhig*, is the Latin *mingere*; and *kag*, or *gag*, though now restricted to the porcupine species, was originally any horrid little beast; hence *zhi-kag*, is equal to *bestiola foeda mingens*.

Others have had recourse to *zhigagawash* "wild garlic;" but this does not help matters, for the ugly root *zhig*, is still there, followed by *-aguwash*, "a plant;" hence *planta urinam redolens*.

CHICAGO, ST. PAUL & KANSAS CITY R'Y.



ROUTE OF FAST LIMITED EXPRESS

TO AND FROM

CHICAGO, ST. PAUL AND MINNEAPOLIS.

Time, 14 Hours.

HOW CAN YOU BEAT IT?

JNO. M. EGAN,

General Manager.

W. R. BUSENBARK,

Gen'l Pass. Agent, CHICAGO

COLD FACTS

that we order enough periodicals each year to supply

1,000,000 READERS,

so please

DON'T BE A SLAVE

to **old** customs, but save money, labor, strength and time by ordering your periodicals of

KELTON & CO.,

Publishers' Agents,

QUINCY, MICHIGAN.

N. B.—If any reader thinks we do not advertise enough, please drop us a postal and say so, and we will mail you one of our Club Lists **FREE**.

DON'T BE A FOSSIL.



ROBERTSON'S FOLLY, MACKINAC ISLAND.

BEAUTIFULLY LEFT

ARE ALL

Those Who Subscribe Direct

WHEN THEY

Can Get the Same Periodicals

AT

CLUB RATE PRICES

FROM

KELTON & CO.,

Publishers' Agents,

QUINCY,

MICHIGAN.

N. B.—When ordering from us please make each letter complete in itself, as with from two hundred to one thousand letters a day, we cannot remember what you may have written at any previous time, and also please enclose the exact amount of your order, as we have no time to keep a set of individual accounts, neither can we afford to do so with our low margin of five per cent. commission. We have neither time nor inclination to "rush the growler," but we have time and a disposition to rush our business so as to make each day take care of its own work, and with our system of checking and counter checking, mistakes seldom occur in our large establishment.

LADIES

SAVE TIME. SAVE MONEY.

CLUB RATES FOR ALL.

All periodicals are sent to you direct from the publishers.

	Publisher's Price.	Our Price.		Publisher's Price.	Our Price.
Arkansas Traveler.....	w	\$2 00	\$1 50	Judge	w \$4 00 \$3 25
Art Amateur.....	m	4 00	3 50	Life	w 5 00 4 00
Arthur's Home Magazine	m	2 00	1 60	Lippincott's Magazine.....	m 3 00 2 10
Atlantic Monthly.....	m	4 00	3 35	Magazine of Amer'c'n Hist'ry..	m 5 00 4 25
Babyhood.....	m	1 50	1 15	Magazine of West'n History..	m 4 00 3 25
Ballou's Monthly.....	m	1 50	1 25	Nation	w 3 00 2 85
Brainard's Musical World.....	m	1 50	1 10	New York Graphic	w 2 50 1 70
Carpentry and Building	m	1 00	80	New York Ledger	w 3 00 2 50
Century Magazine.....	m	4 00	3 60	New York Weekly.....	w 3 00 2 50
Cincinnati Graphic News	w	4 00	3 25	North American Review.....	m 5 00 4 25
Cosmopolitan.....	m	2 00	1 50	Our Little Men and Women..	m 1 00 90
Country Gentleman.....	w	2 50	2 00	Our Little Ones and Nursery..	m 1 50 1 30
Demorest's Monthly.....	m	2 00	1 65	Outing.....	m 3 00 2 50
Fireside Companion	w	3 00	2 50	Overland Monthly.....	m 4 00 3 25
Forum.....	m	5 00	4 20	Pansy, Juvenile.....	m 1 00 90
Frank Leslie's Ill. Newspaper..	w	4 00	3 40	Peck's Sun.....	w 2 00 1 75
Frank Leslie's Pop'lar M'thly..	m	3 00	2 55	Peterson's Magazine	m 2 00 1 45
Frank Leslie's Sunday Mag	m	2 50	2 15	Popular Science Monthly.....	m 5 00 4 25
Godey's Lady's Book.....	m	2 00	1 65	Puck (English or German) ..	w 5 00 4 00
Golden Argosy.....	w	3 00	2 50	Public Opinion.....	w 3 00 2 50
Golden Days	w	3 00	2 50	Rural New Yorker.....	w 2 00 1 65
Harper's Bazar.....	w	4 00	3 30	Science	w 3 50 3 00
Harper's Monthly	m	4 00	3 10	Scientific American.....	w 3 30 2 75
Harper's Weekly.....	w	4 00	3 30	Scribner's Magazine	m 3 00 2 60
Harper's Young People	w	2 00	1 65	St. Nicholas.....	m 3 00 2 65
Irish American.....	w	2 50	2 15	Texas Siftings	w 4 00 3 50
Irish World.....	w	2 50	2 15	Waverly Magazine.....	w 4 00 3 65

The above rates are for full year only. Subscriptions can begin at any time. We send a receipt for all remittances.

KELTON & CO.,

Publishers' Agents,

(NOT Illinois.)

QUINCY, MICHIGAN.

8.

ur
ice.

25
4 00
2 10
4 25
3 25
2 85
1 70
2 50
2 50
4 25
90
1 30
2 50
3 25
90
1 75
1 45
4 25
4 00
0 2 50
0 1 65
0 3 00
0 2 75
00 2 60
00 2 65
00 3 50
00 3 65

ns can

8.

HIGAN.

BOOKS

BY

DWIGHT H. KELTON,

CAPTAIN U.S. ARMY.

Indian Names and History of the Sault Ste. Marie Canal;

PAPER 25 CENTS.

Annals of Fort Mackinac;

PAPER 25 CENTS.

Indian Names of Places Near the Great Lakes;

VOL. 1, CLOTH, \$1.00

VOL. 2, PAPER, .50

The above sent by mail on receipt of price.

KELTON & CO.,

PUBLISHERS' AGENTS,

QUINCY, MICHIGAN

